

Data Path : Z:\VOASRV\HPCHEM1\MSVOA X\DATA\VX071619\
 Data File : VX010917.D
 Acq On : 16 Jul 2019 19:25
 Operator : JC/SP
 Sample : K3791-17
 Misc : 5.0mL/MSVOA X/WATER
 ALS Vial : 20 Sample Multiplier: 1

Instrument :
 MSVOA_X
 Client Sampled :
 FL-0611

Quant Time: Jul 17 05:04:53 2019
 Quant Method : Z:\VOASRV\HPCHEM1\MSVOA_X\METHOD\82X071619W.M
 Quant Title : SW846 8260
 QLast Update : Wed Jul 17 04:37:55 2019
 Response via : Initial Calibration

Internal Standards	R.T.	QIon	Response	Conc	Units	Dev(Min)
1) Pentafluorobenzene	5.67	168	233117	50.00	ug/l	0.00
34) 1,4-Difluorobenzene	6.86	114	363446	50.00	ug/l	0.00
63) Chlorobenzene-d5	10.11	117	347249	50.00	ug/l	0.00
72) 1,4-Dichlorobenzene-d4	12.08	152	186880	50.00	ug/l	0.00

System Monitoring Compounds

33) 1,2-Dichloroethane-d4	6.06	65	121137	48.85	ug/l	0.00
Spiked Amount	50.000		Recovery	=	97.70%	
35) Dibromofluoromethane	5.50	113	112499	48.77	ug/l	0.00
Spiked Amount	50.000		Recovery	=	97.54%	
50) Toluene-d8	8.71	98	446955	51.66	ug/l	0.00
Spiked Amount	50.000		Recovery	=	103.32%	
62) 4-Bromofluorobenzene	11.13	95	180374	56.72	ug/l	0.00
Spiked Amount	50.000		Recovery	=	113.44%	

Target Compounds

						Qvalue
2) Dichlorodifluoromethane	1.20	85	155	0.608	ug/l #	43
5) Bromomethane	1.66	94	591	0.480	ug/l	98
6) Chloroethane	1.69	64	321	0.231	ug/l #	55
11) Tert butyl alcohol	3.03	59	1123	1.944	ug/l #	73
13) Acrolein	2.26	56	610	1.828	ug/l #	1
14) Allyl chloride	2.85	41	41321	13.700	ug/l #	64
15) Acrylonitrile	3.17	53	9987	8.557	ug/l #	39
16) Acetone	2.45	43	2422	2.162	ug/l	88
18) Methyl Acetate	2.84	43	101798	39.913	ug/l #	48
25) 2-Butanone	4.40	43	98920	61.522	ug/l #	46
26) 2,2-Dichloropropane	4.41	77	11344	3.740	ug/l #	50
29) Tetrahydrofuran	5.12	42	248	0.243	ug/l #	38
31) Cyclohexane	5.59	56	1994002	592.170	ug/l	99
36) 1,1-Dichloropropene	5.66	75	15481	5.186	ug/l #	48
38) Carbon Tetrachloride	5.66	117	21009	6.753	ug/l #	17
39) Methylcyclohexane	7.46	83	1133630	292.817	ug/l	99
40) Benzene	6.15	78	23374	2.556	ug/l	96
43) Isopropyl Acetate	6.46	43	13168	2.620	ug/l #	58
45) 1,2-Dichloropropane	7.46	63	10983	4.719	ug/l #	1
47) Bromodichloromethane	7.86	83	1150	0.388	ug/l #	62
48) Methyl methacrylate	7.73	41	42712	17.443	ug/l #	52
49) 1,4-Dioxane	7.77	88	63	0.920	ug/l #	28
51) 4-Methyl-2-Pentanone	8.66	43	4553	1.397	ug/l #	50
52) Toluene	8.79	92	1001064	166.635	ug/l	100
55) 1,1,2-Trichloroethane	9.16	97	29349	11.865	ug/l #	18
56) Ethyl methacrylate	9.16	69	6222	1.720	ug/l #	1
59) 2-Hexanone	9.51	43	691	0.273	ug/l	80
60) Dibromochloromethane	9.66	129	22	2.535	ug/l #	11
67) Ethyl Benzene	10.26	91	10685246	880.177	ug/l	92
68) m/p-Xylenes	10.38	106	14819690	3182.408	ug/l #	55
69) o-Xylene	10.70	106	2237048	492.226	ug/l	99
70) Styrene	10.70	104	112396	14.836	ug/l #	1
73) Isopropylbenzene	11.02	105	1044530	82.719	ug/l	100
74) N-amyl acetate	10.94	43	1037	0.215	ug/l #	48

Data Path : Z:\VOASRV\HPCHEM1\MSVOA X\DATA\VX071619\
 Data File : VX010917.D
 Acq On : 16 Jul 2019 19:25
 Operator : JC/SP
 Sample : K3791-17
 Misc : 5.0mL/MSVOA X/WATER
 ALS Vial : 20 Sample Multiplier: 1

Instrument :
 MSVOA_X
 ClientSampleId :
 FL-0611

Quant Time: Jul 17 05:04:53 2019
 Quant Method : Z:\VOASRV\HPCHEM1\MSVOA_X\METHOD\82X071619W.M
 Quant Title : SW846 8260
 QLast Update : Wed Jul 17 04:37:55 2019
 Response via : Initial Calibration

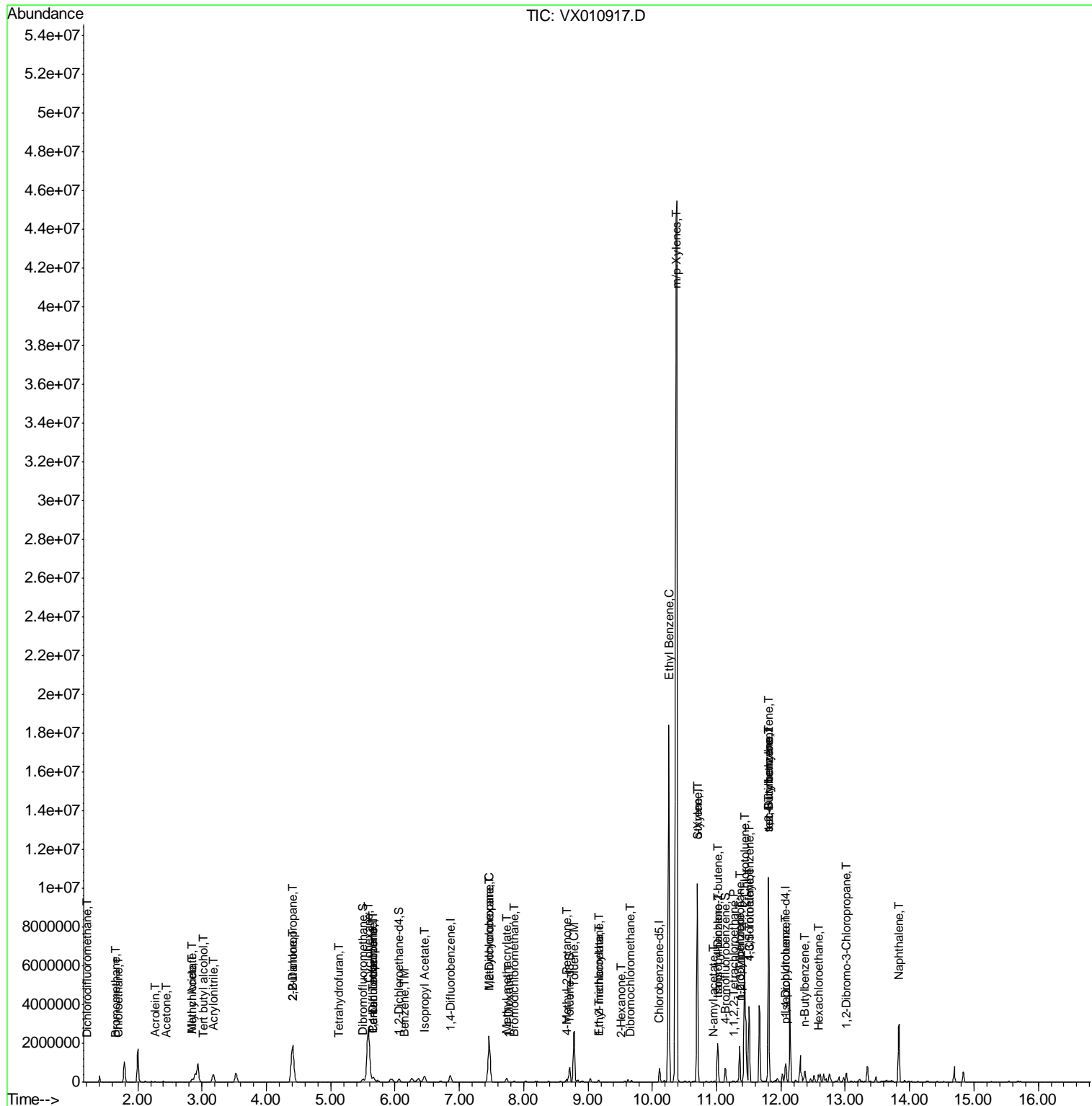
Internal Standards	R.T.	QIon	Response	Conc	Units	Dev(Min)
75) 1,1,2,2-Tetrachloroethane	11.27	83	1882	0.455	ug/l #	58
76) 1,2,3-Trichloropropane	11.36	75	7124	2.112	ug/l #	1
78) n-propylbenzene	11.36	91	1137771	81.547	ug/l	99
79) 2-Chlorotoluene	11.43	91	580185	69.222	ug/l #	39
80) 1,3,5-Trimethylbenzene	11.51	105	1663580	157.663	ug/l	99
81) trans-1,4-Dichloro-2-buten	11.02	75	12902	12.901	ug/l #	65
82) 4-Chlorotoluene	11.51	91	176356	18.078	ug/l #	43
83) tert-Butylbenzene	11.81	119	606362	58.505	ug/l #	57
84) 1,2,4-Trimethylbenzene	11.81	105	4769319	448.460	ug/l	98
85) sec-Butylbenzene	11.81	105	4769319	392.725	ug/l #	55
86) p-Isopropyltoluene	12.06	119	102095	9.093	ug/l	99
89) n-Butylbenzene	12.37	91	76680	7.983	ug/l #	17
90) Hexachloroethane	12.58	117	16430	9.278	ug/l #	6
92) 1,2-Dibromo-3-Chloropropan	13.02	75	1803	2.087	ug/l #	1
95) Naphthalene	13.83	128	1905246	158.920	ug/l	100

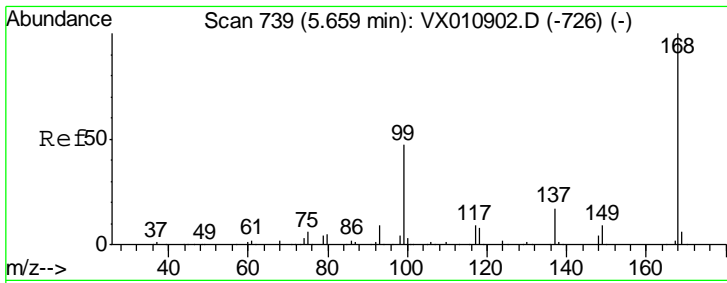
(#) = qualifier out of range (m) = manual integration (+) = signals summed

Data Path : Z:\VOASRV\HPCHEM1\MSVOA X\DATA\VX071619\
 Data File : VX010917.D
 Acq On : 16 Jul 2019 19:25
 Operator : JC/SP
 Sample : K3791-17
 Misc : 5.0mL/MSVOA X/WATER
 ALS Vial : 20 Sample Multiplier: 1

Instrument :
 MSVOA_X
 Client Sampled :
 FL-0611

Quant Time: Jul 17 05:04:53 2019
 Quant Method : Z:\VOASRV\HPCHEM1\MSVOA_X\METHOD\82X071619W.M
 Quant Title : SW846 8260
 QLast Update : Wed Jul 17 04:37:55 2019
 Response via : Initial Calibration

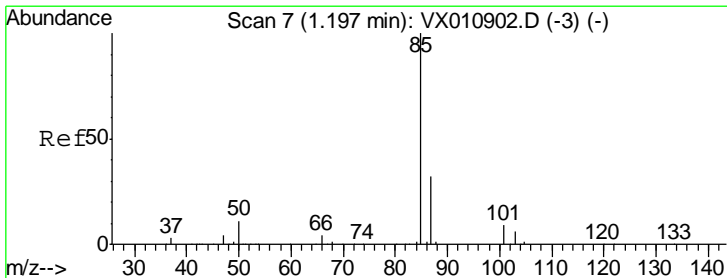
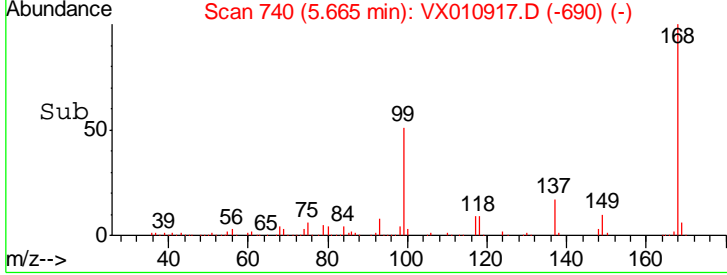
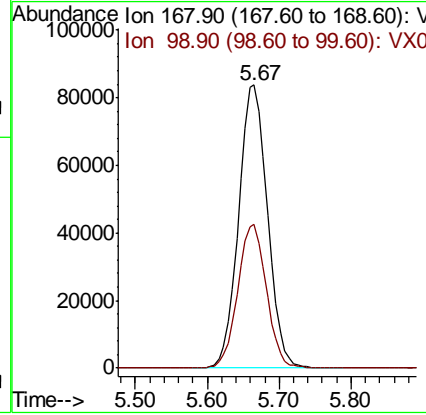
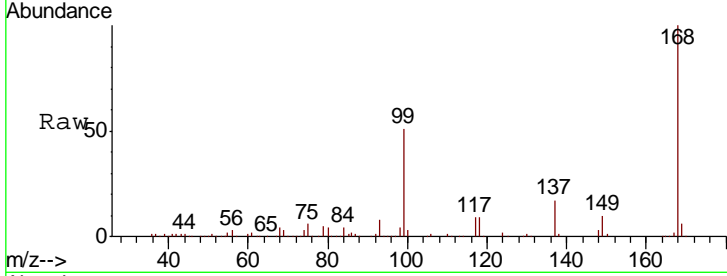




#1
 Pentafluorobenzene
 Concen: 50.000 ug/l
 RT: 5.67 min Scan# 740
 Delta R.T. 0.01 min
 Lab File: VX010917.D
 Acq: 16 Jul 2019 19:25

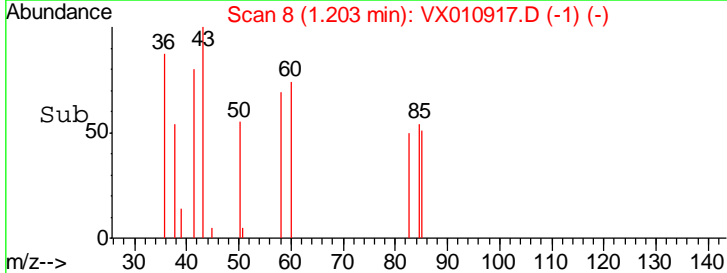
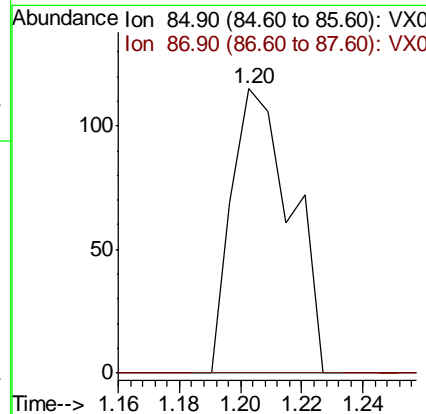
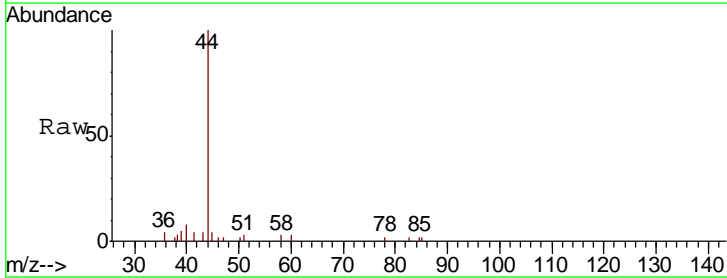
Instrument :
 MSVOA_X
 ClientSampled :
 FL-0611

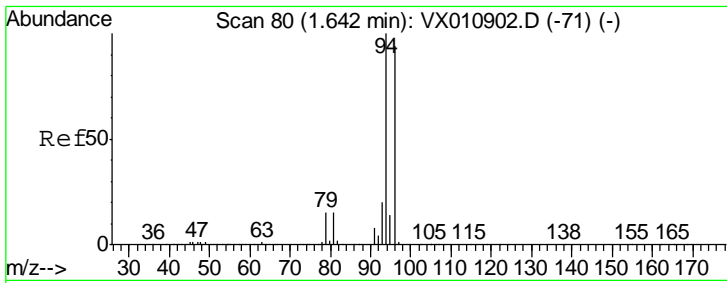
Tgt Ion: 168 Resp: 233117
 Ion Ratio Lower Upper
 168 100
 99 50.9 37.6 56.4



#2
 Dichlorodifluoromethane
 Concen: 0.608 ug/l
 RT: 1.20 min Scan# 8
 Delta R.T. 0.01 min
 Lab File: VX010917.D
 Acq: 16 Jul 2019 19:25

Tgt Ion: 85 Resp: 155
 Ion Ratio Lower Upper
 85 100
 87 0.0 15.9 47.7#

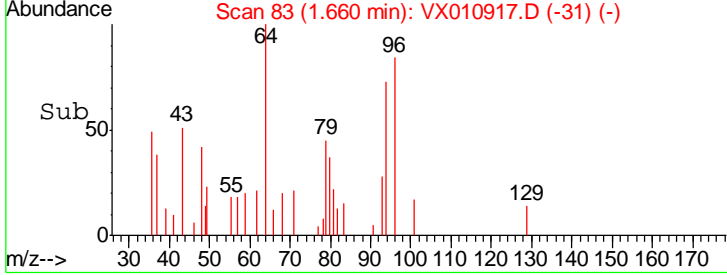
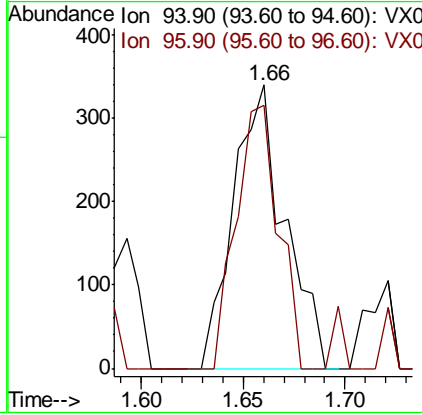
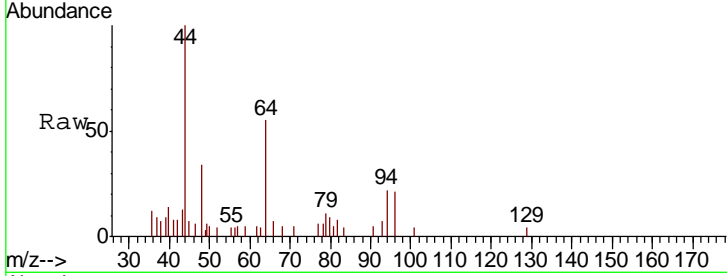




#5
 Bromomethane
 Concen: 0.480 ug/l
 RT: 1.66 min Scan# 83
 Delta R.T. 0.02 min
 Lab File: VX010917.D
 Acq: 16 Jul 2019 19:25

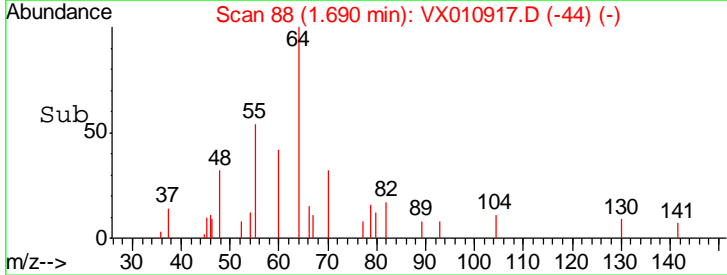
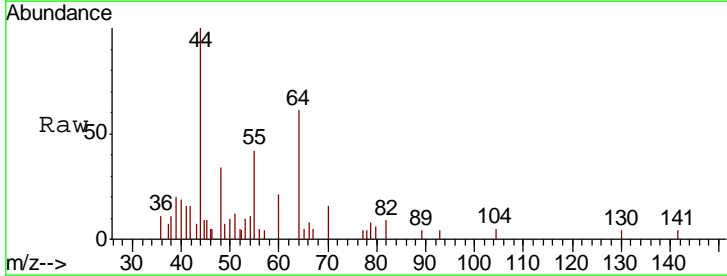
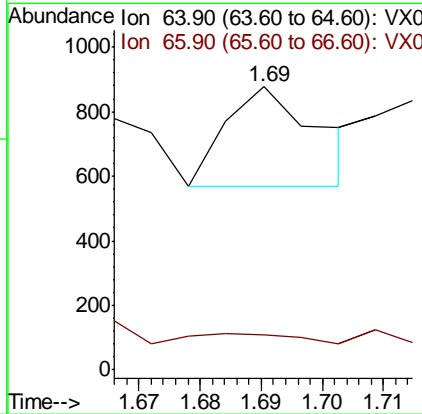
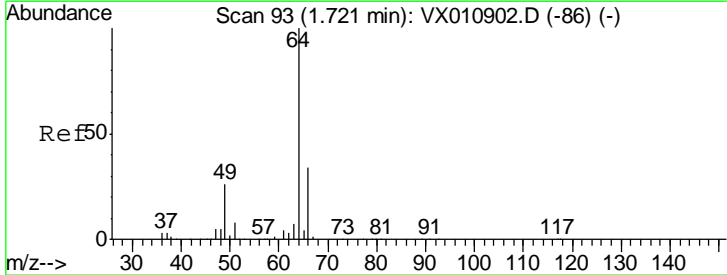
Instrument :
 MSVOA_X
ClientSampled :
 FL-0611

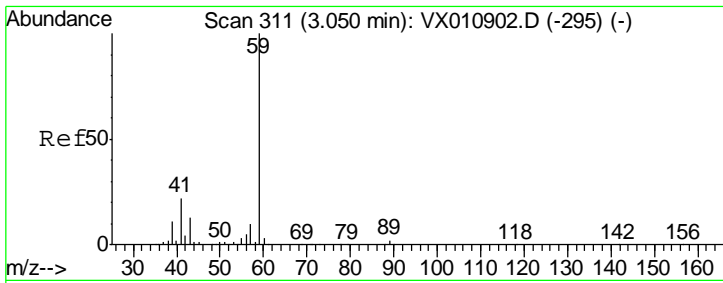
Tgt Ion	Resp	Lower	Upper
94	100		
96	92.9	75.6	113.4



#6
 Chloroethane
 Concen: 0.231 ug/l
 RT: 1.69 min Scan# 88
 Delta R.T. -0.03 min
 Lab File: VX010917.D
 Acq: 16 Jul 2019 19:25

Tgt Ion	Resp	Lower	Upper
64	100		
66	8.1	27.0	40.6#

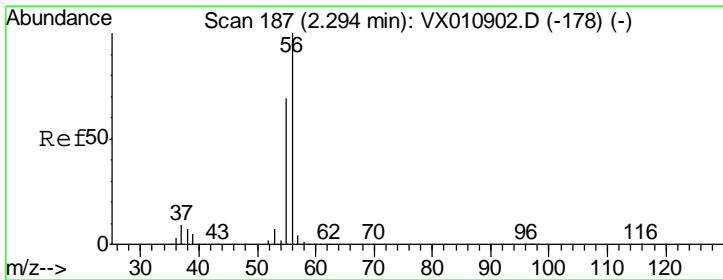
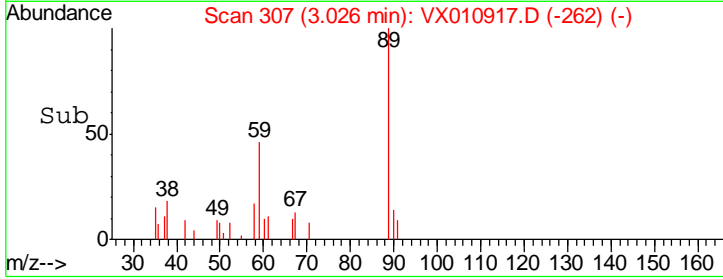
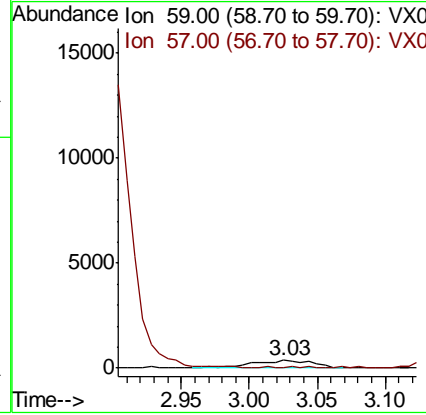
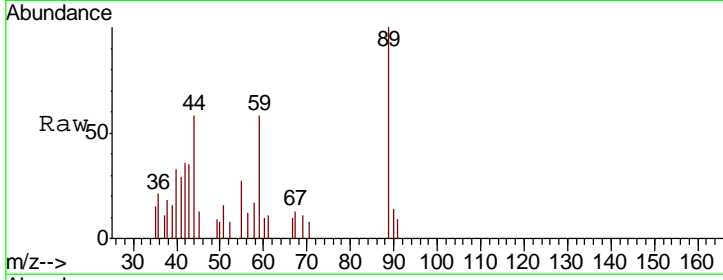




#11
 Tert butyl alcohol
 Concen: 1.944 ug/l
 RT: 3.03 min Scan# 307
 Delta R.T. -0.02 min
 Lab File: VX010917.D
 Acq: 16 Jul 2019 19:25

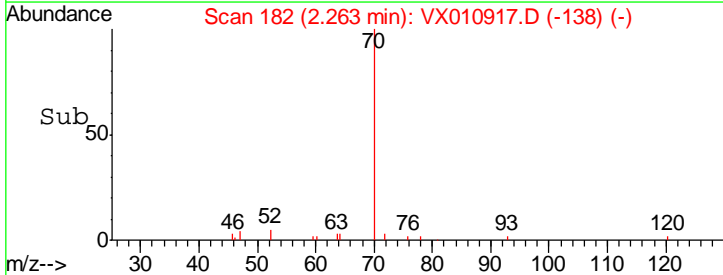
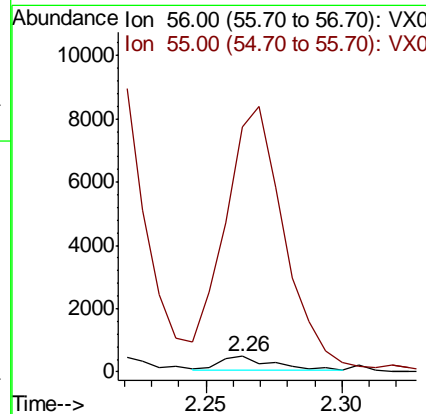
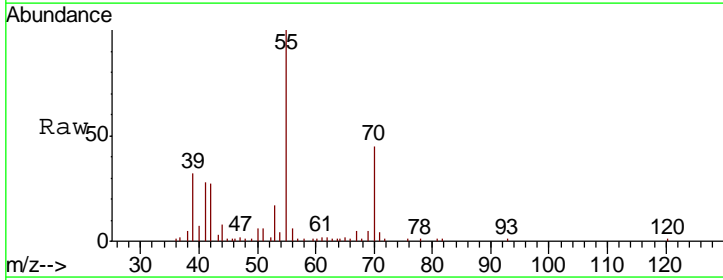
Instrument :
 MSVOA_X
 ClientSampled :
 FL-0611

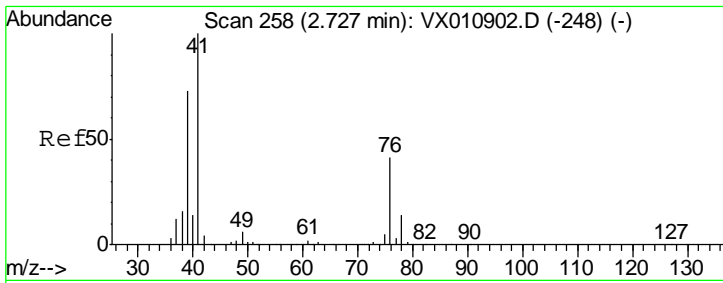
Tgt Ion: 59 Resp: 1123
 Ion Ratio Lower Upper
 59 100
 57 0.0 7.9 11.9#



#13
 Acrolein
 Concen: 1.828 ug/l
 RT: 2.26 min Scan# 182
 Delta R.T. -0.03 min
 Lab File: VX010917.D
 Acq: 16 Jul 2019 19:25

Tgt Ion: 56 Resp: 610
 Ion Ratio Lower Upper
 56 100
 55 2019.2 55.9 83.9#

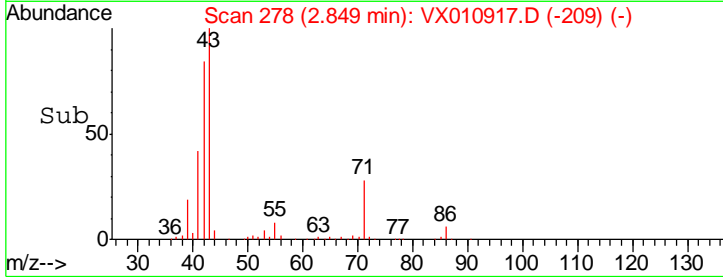
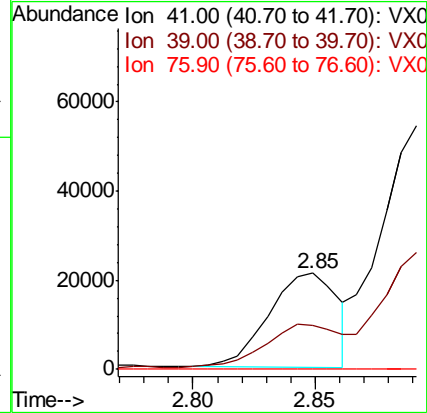
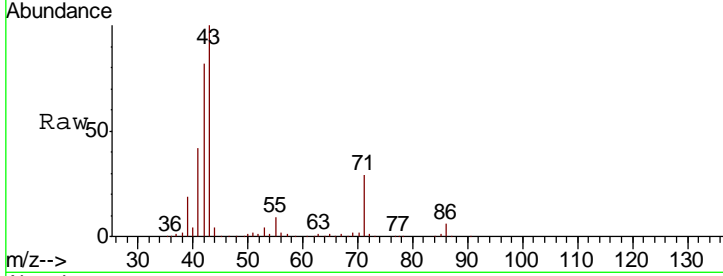




#14
 Allyl chloride
 Concen: 13.700 ug/l
 RT: 2.85 min Scan# 278
 Delta R.T. 0.12 min
 Lab File: VX010917.D
 Acq: 16 Jul 2019 19:25

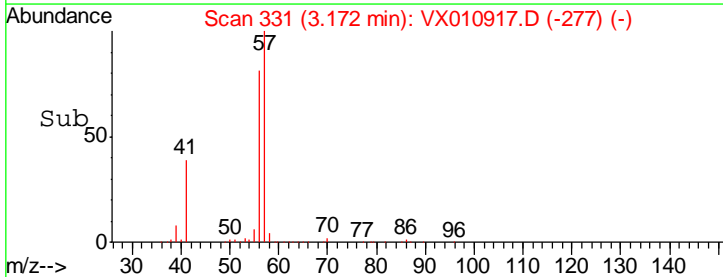
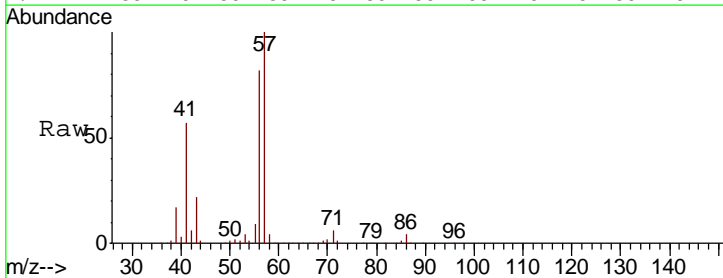
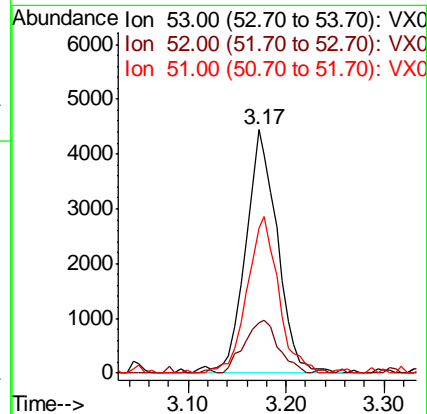
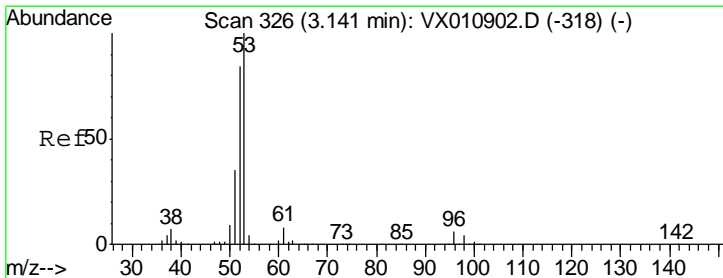
Instrument :
 MSVOA_X
 ClientSampled :
 FL-0611

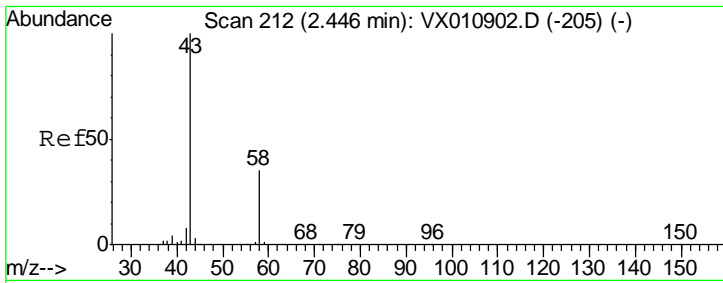
Tgt Ion	Resp	Lower	Upper
41	100		
39	49.3	53.6	80.4#
76	0.0	29.7	44.5#



#15
 Acrylonitrile
 Concen: 8.557 ug/l
 RT: 3.17 min Scan# 331
 Delta R.T. 0.03 min
 Lab File: VX010917.D
 Acq: 16 Jul 2019 19:25

Tgt Ion	Resp	Lower	Upper
53	100		
52	23.2	66.5	99.7#
51	63.7	28.2	42.4#

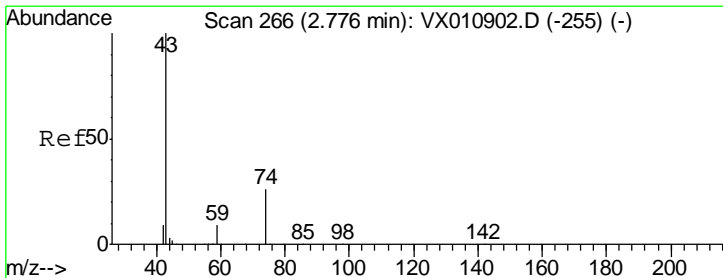
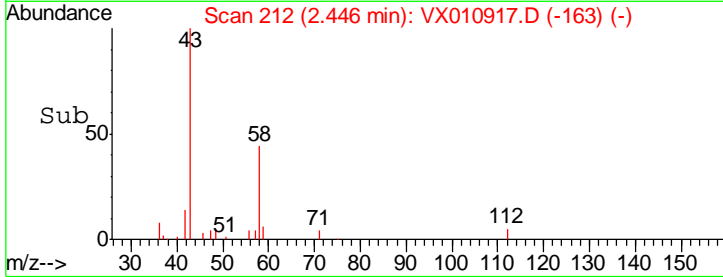
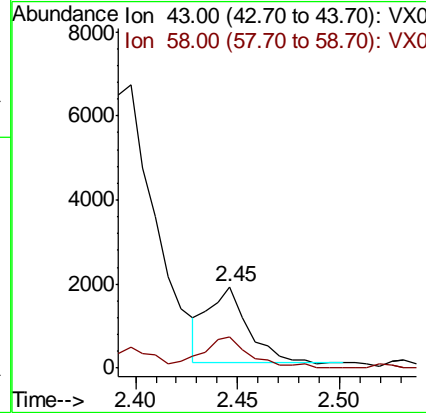
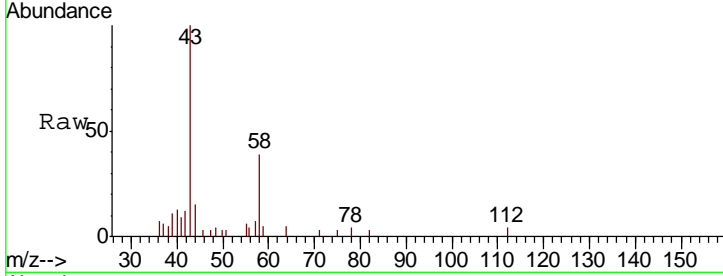




#16
 Acetone
 Concen: 2.162 ug/l
 RT: 2.45 min Scan# 212
 Delta R.T. 0.00 min
 Lab File: VX010917.D
 Acq: 16 Jul 2019 19:25

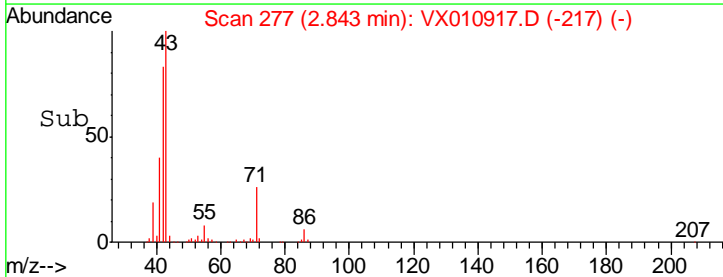
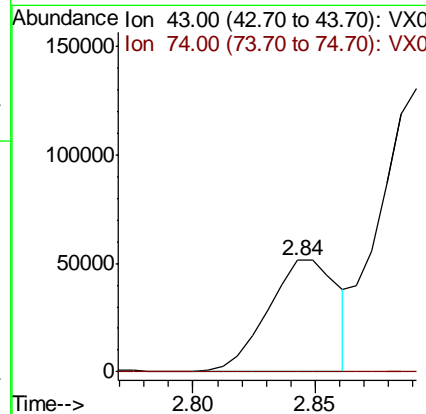
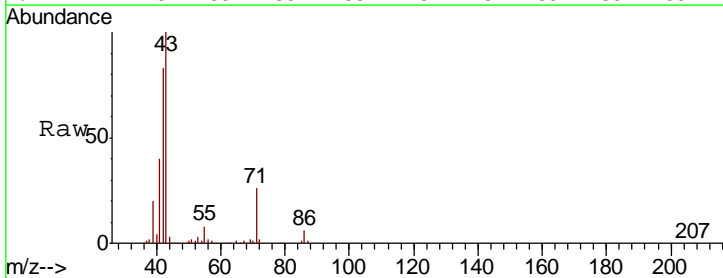
Instrument :
 MSVOA_X
ClientSampled :
 FL-0611

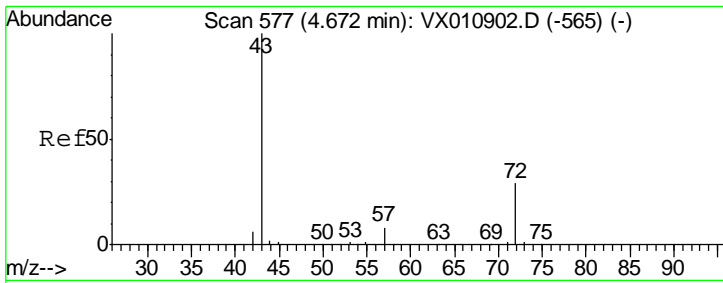
Tgt Ion	Resp	Lower	Upper
43	100		
58	41.4	27.7	41.5



#18
 Methyl Acetate
 Concen: 39.913 ug/l
 RT: 2.84 min Scan# 277
 Delta R.T. 0.07 min
 Lab File: VX010917.D
 Acq: 16 Jul 2019 19:25

Tgt Ion	Resp	Lower	Upper
43	100		
74	0.1	21.5	32.3#

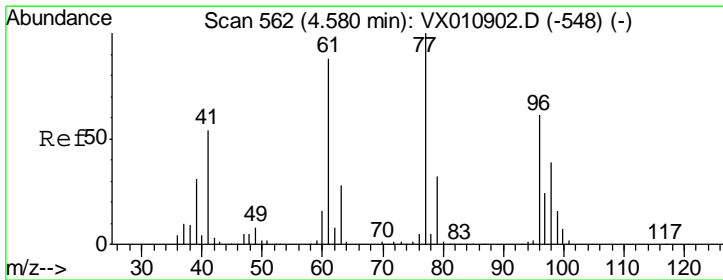
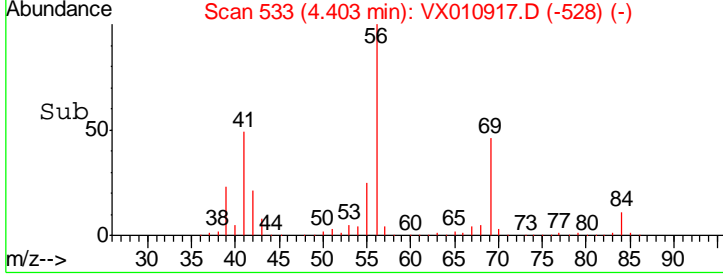
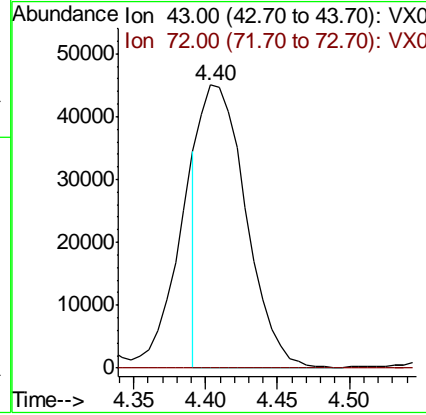
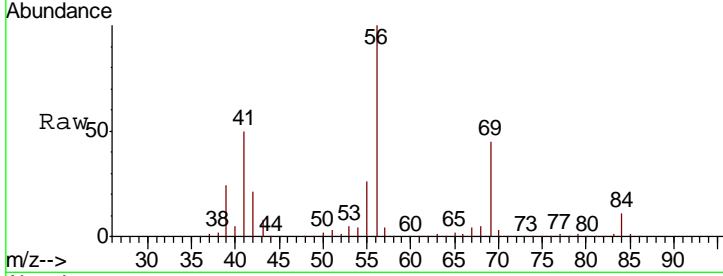




#25
 2-Butanone
 Concen: 61.522 ug/l
 RT: 4.40 min Scan# 533
 Delta R.T. -0.27 min
 Lab File: VX010917.D
 Acq: 16 Jul 2019 19:25

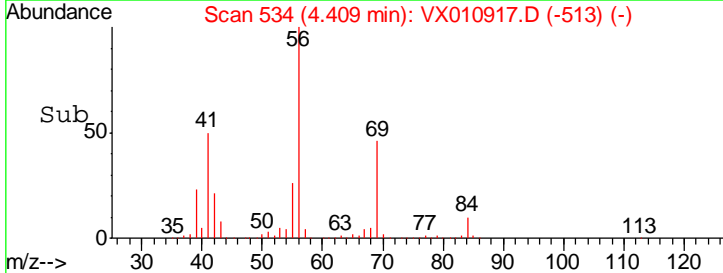
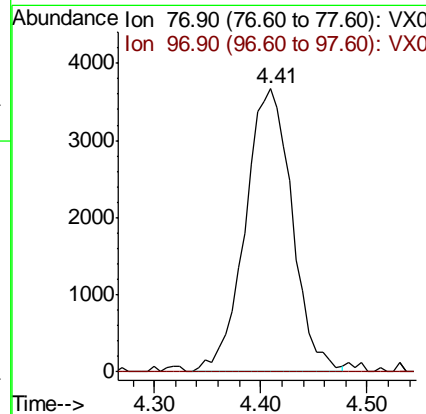
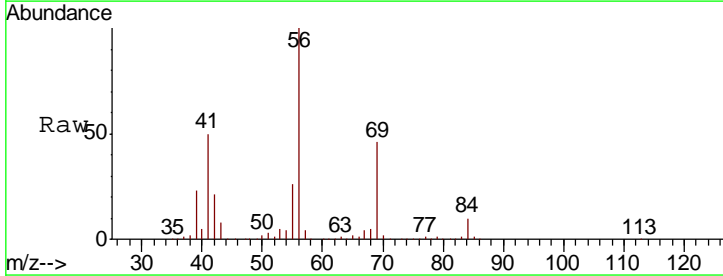
Instrument :
 MSVOA_X
 ClientSampled :
 FL-0611

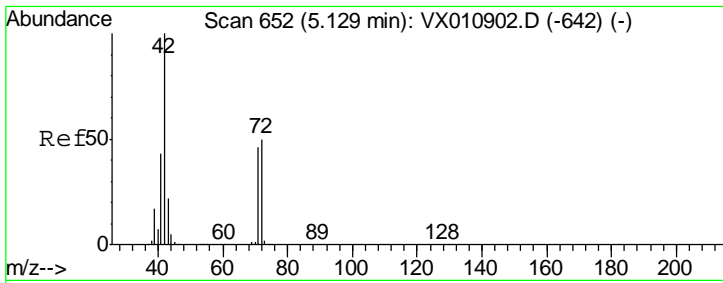
Tgt Ion	Resp	Lower	Upper
43	100		
72	0.0	23.0	34.6#



#26
 2,2-Dichloropropane
 Concen: 3.740 ug/l
 RT: 4.41 min Scan# 534
 Delta R.T. -0.17 min
 Lab File: VX010917.D
 Acq: 16 Jul 2019 19:25

Tgt Ion	Resp	Lower	Upper
77	100		
97	0.0	12.6	37.6#

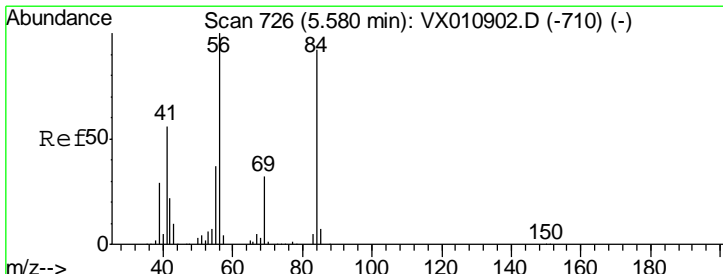
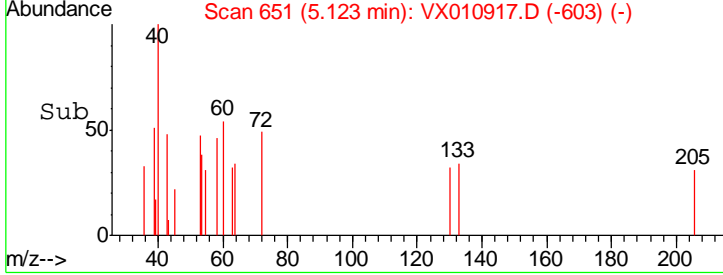
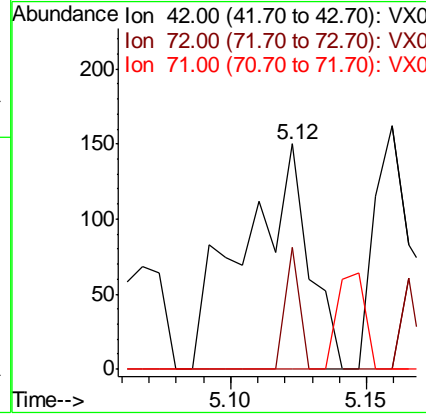
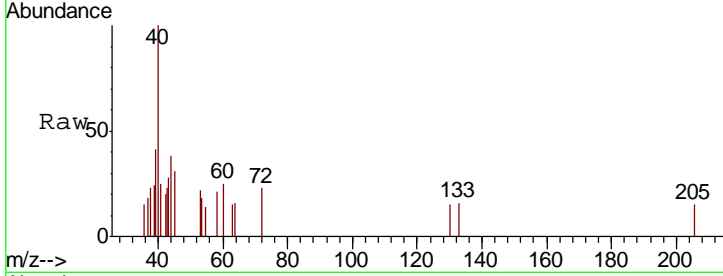




#29
 Tetrahydrofuran
 Concen: 0.243 ug/l
 RT: 5.12 min Scan# 651
 Delta R.T. -0.01 min
 Lab File: VX010917.D
 Acq: 16 Jul 2019 19:25

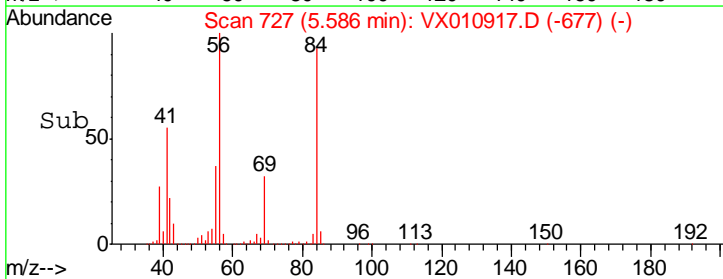
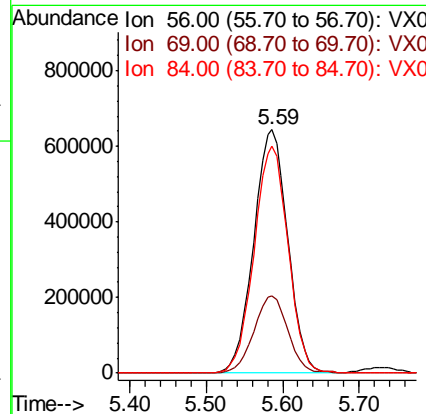
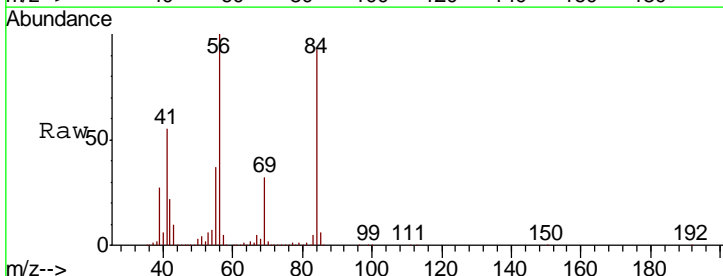
Instrument :
 MSVOA_X
 ClientSampled :
 FL-0611

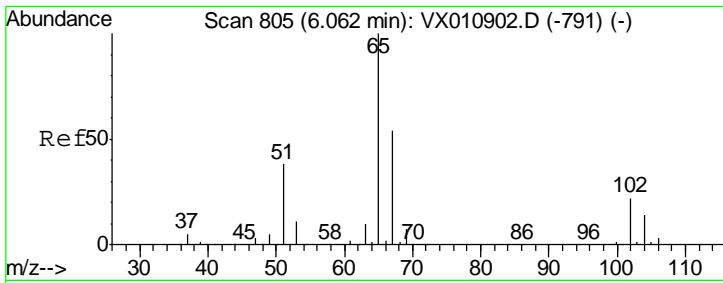
Tgt Ion	Resp	Lower	Upper
42	100		
72	12.1	39.8	59.8#
71	0.0	37.0	55.4#



#31
 Cyclohexane
 Concen: 592.170 ug/l
 RT: 5.59 min Scan# 727
 Delta R.T. 0.01 min
 Lab File: VX010917.D
 Acq: 16 Jul 2019 19:25

Tgt Ion	Resp	Lower	Upper
56	100		
69	31.7	25.8	38.8
84	93.2	73.8	110.6

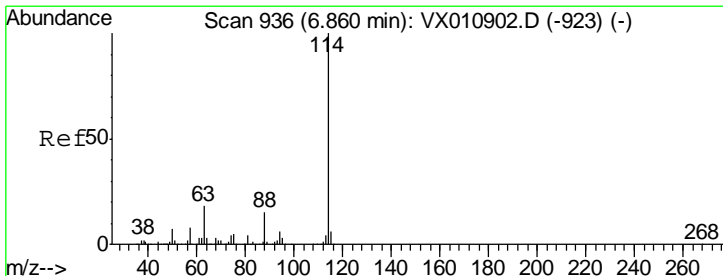
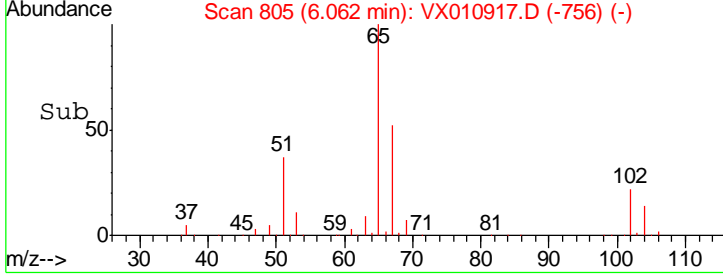
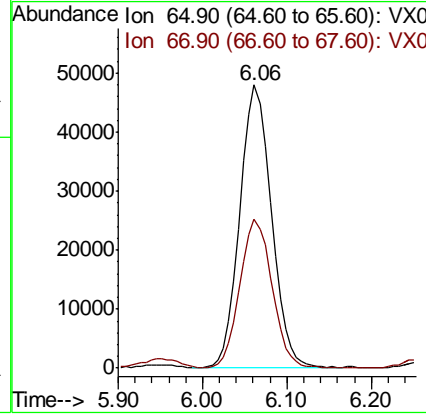
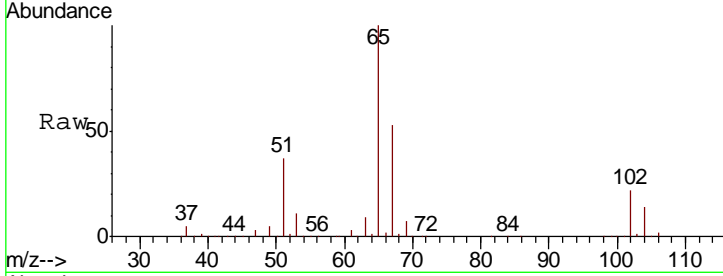




#33
 1,2-Dichloroethane-d4
 Concen: 48.845 ug/l
 RT: 6.06 min Scan# 805
 Delta R.T. -0.00 min
 Lab File: VX010917.D
 Acq: 16 Jul 2019 19:25

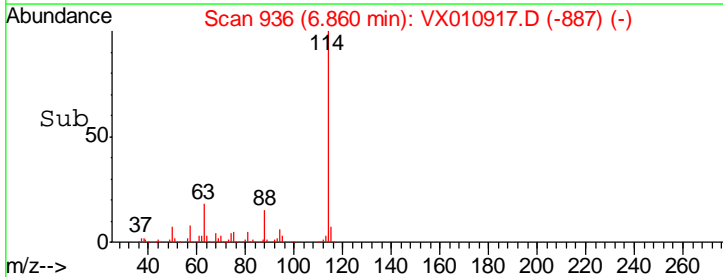
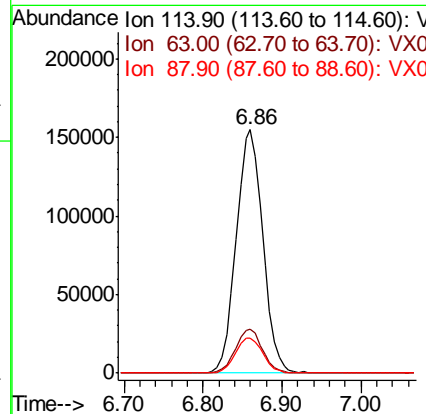
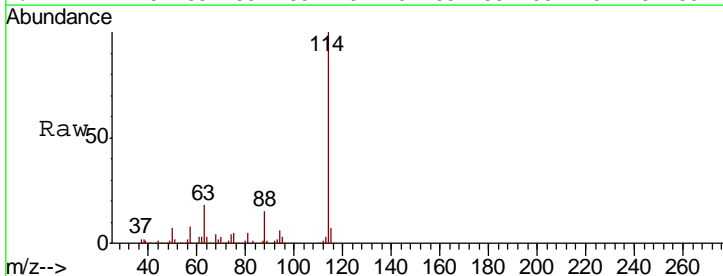
Instrument :
 MSVOA_X
 ClientSampled :
 FL-0611

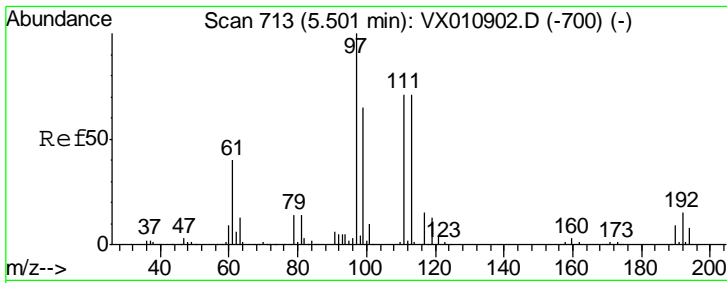
Tgt Ion	Resp	Lower	Upper
65	121137		
67	53.6	0.0	107.8



#34
 1,4-Difluorobenzene
 Concen: 50.000 ug/l
 RT: 6.86 min Scan# 936
 Delta R.T. -0.00 min
 Lab File: VX010917.D
 Acq: 16 Jul 2019 19:25

Tgt Ion	Resp	Lower	Upper
114	363446		
63	18.1	0.0	35.6
88	14.6	0.0	29.8

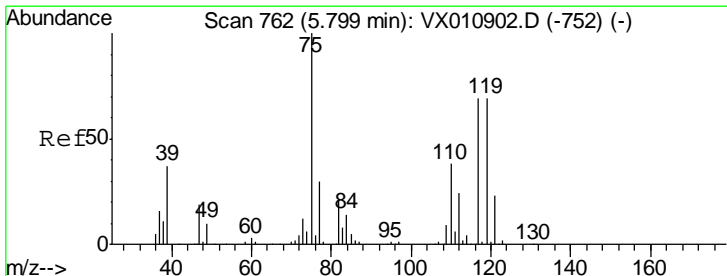
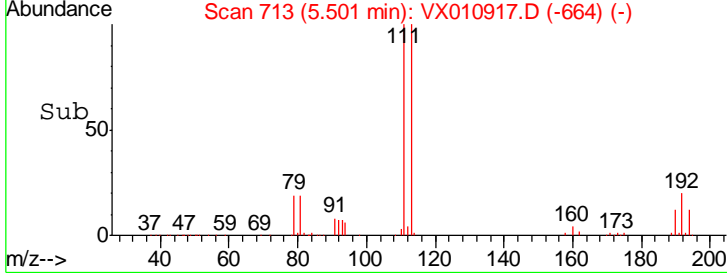
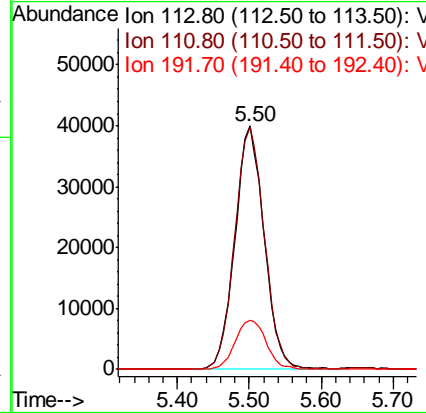
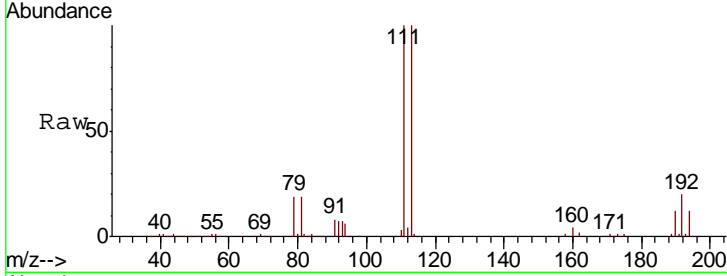




#35
 Dibromofluoromethane
 Concen: 48.767 ug/l
 RT: 5.50 min Scan# 713
 Delta R.T. -0.00 min
 Lab File: VX010917.D
 Acq: 16 Jul 2019 19:25

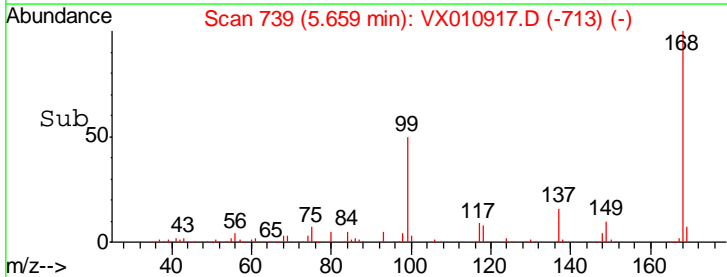
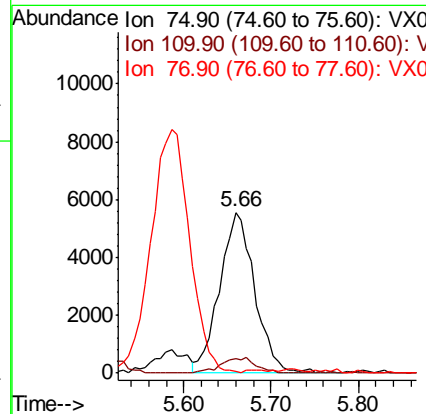
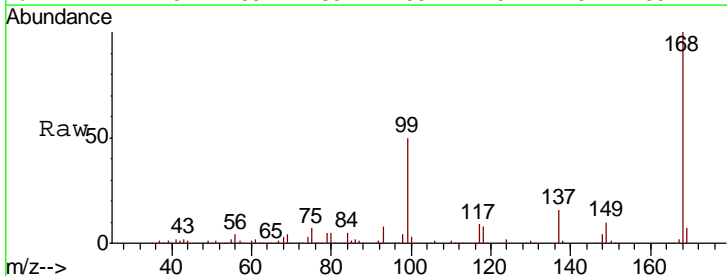
Instrument :
 MSVOA_X
 ClientSampled :
 FL-0611

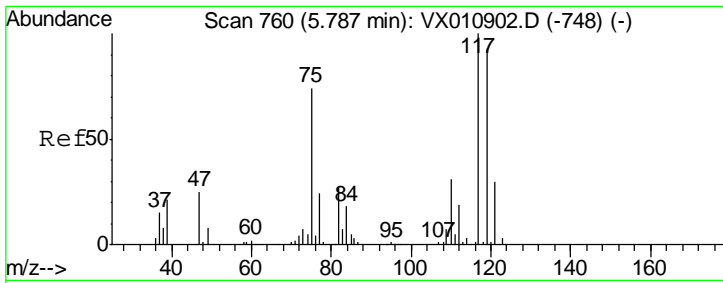
Tgt Ion	Resp	Lower	Upper
113	112499		
113	100		
111	101.0	82.3	123.5
192	21.3	17.4	26.2



#36
 1,1-Dichloropropene
 Concen: 5.186 ug/l
 RT: 5.66 min Scan# 739
 Delta R.T. -0.14 min
 Lab File: VX010917.D
 Acq: 16 Jul 2019 19:25

Tgt Ion	Resp	Lower	Upper
75	15481		
75	100		
110	9.6	19.9	59.7#
77	0.0	25.0	37.4#

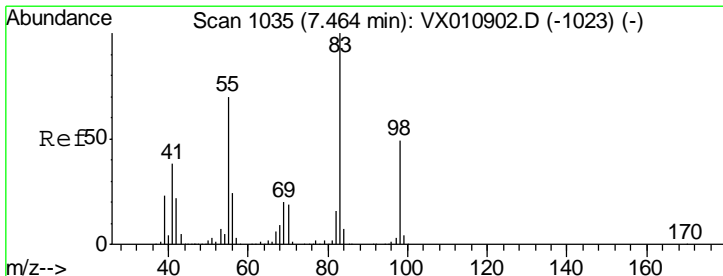
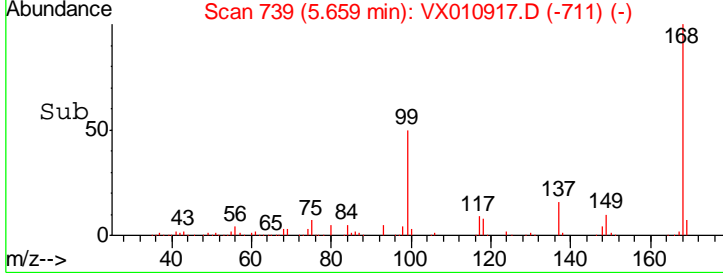
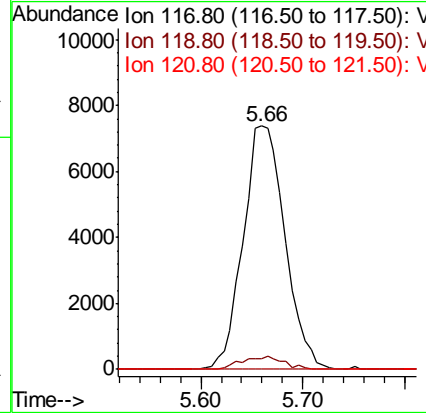
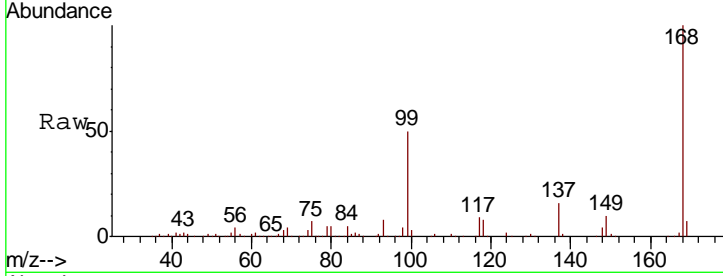




#38
 Carbon Tetrachloride
 Concen: 6.753 ug/l
 RT: 5.66 min Scan# 739
 Delta R.T. -0.13 min
 Lab File: VX010917.D
 Acq: 16 Jul 2019 19:25

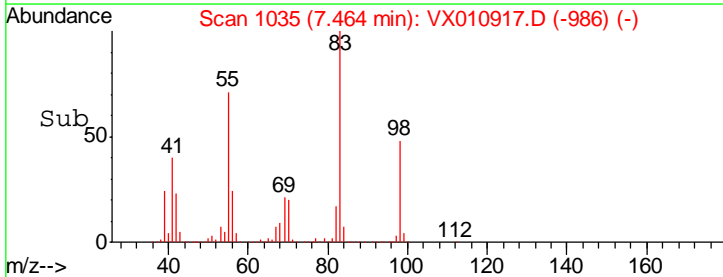
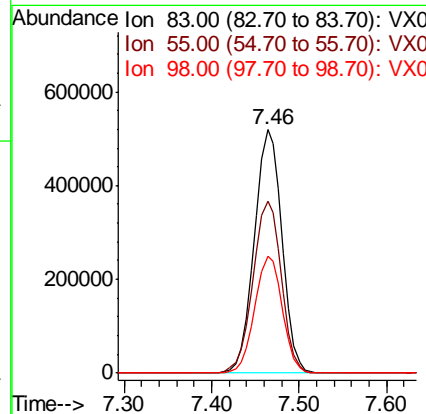
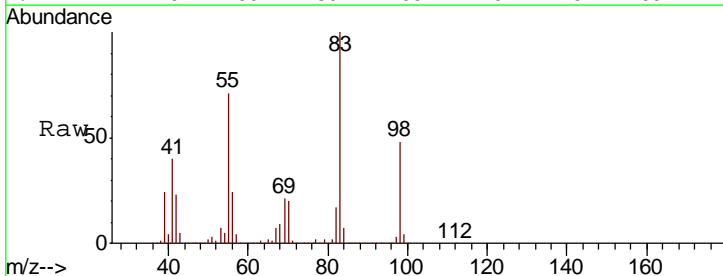
Instrument :
 MSVOA_X
 ClientSampled :
 FL-0611

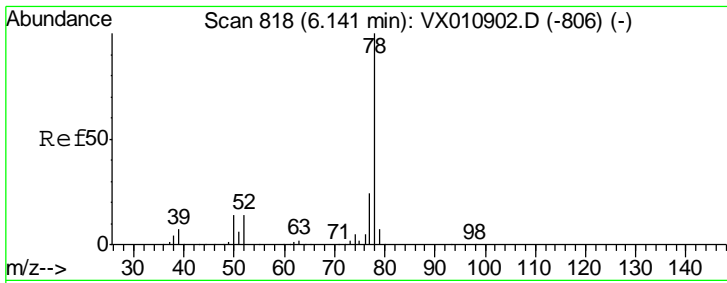
Tgt Ion	Resp	Lower	Upper
117	21009		
119	4.4	74.2	111.2#
121	0.0	24.2	36.2#



#39
 Methylcyclohexane
 Concen: 292.817 ug/l
 RT: 7.46 min Scan# 1035
 Delta R.T. -0.00 min
 Lab File: VX010917.D
 Acq: 16 Jul 2019 19:25

Tgt Ion	Resp	Lower	Upper
83	1133630		
55	70.6	56.2	84.4
98	48.1	39.0	58.4

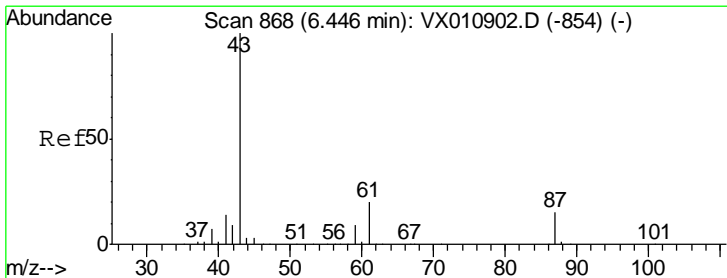
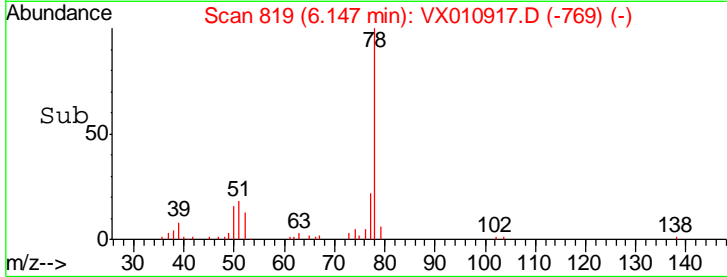
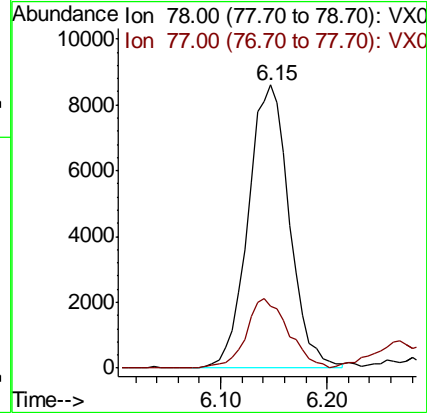
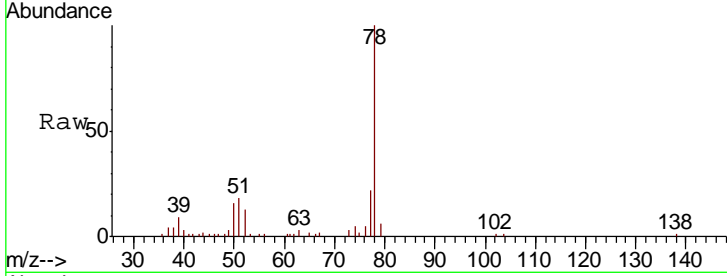




#40
Benzene
Concen: 2.556 ug/l
RT: 6.15 min Scan# 819
Delta R.T. 0.01 min
Lab File: VX010917.D
Acq: 16 Jul 2019 19:25

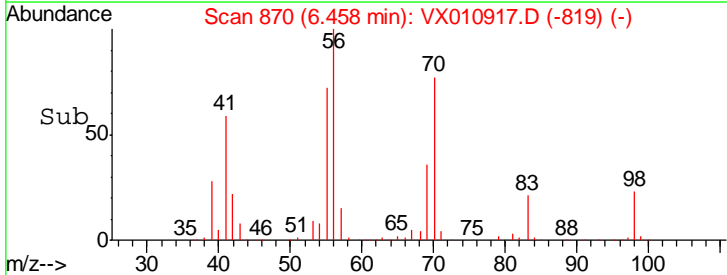
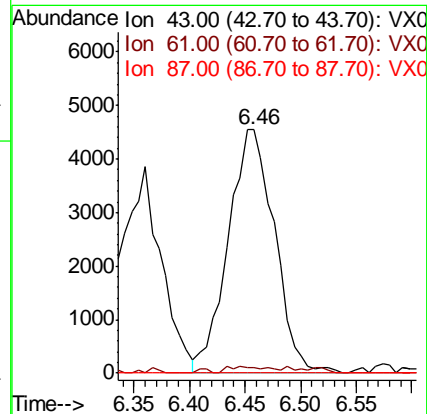
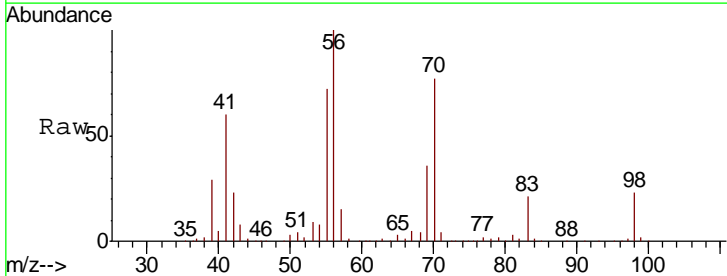
Instrument :
MSVOA_X
ClientSampled :
FL-0611

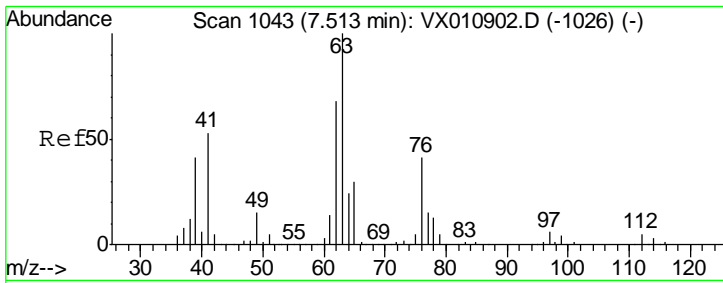
Tgt Ion: 78 Resp: 23374
Ion Ratio Lower Upper
78 100
77 22.0 19.0 28.6



#43
Isopropyl Acetate
Concen: 2.620 ug/l
RT: 6.46 min Scan# 870
Delta R.T. 0.01 min
Lab File: VX010917.D
Acq: 16 Jul 2019 19:25

Tgt Ion: 43 Resp: 13168
Ion Ratio Lower Upper
43 100
61 0.0 17.1 25.7#
87 0.0 12.0 18.0#

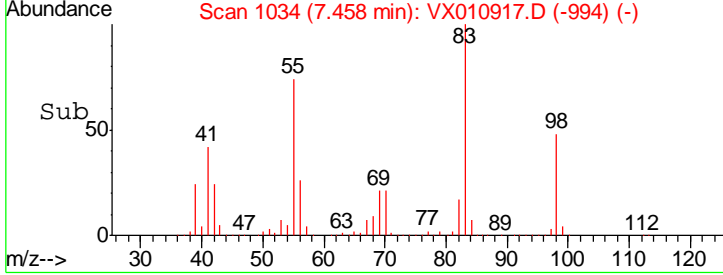
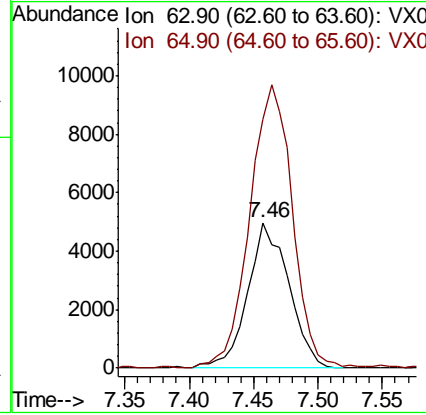
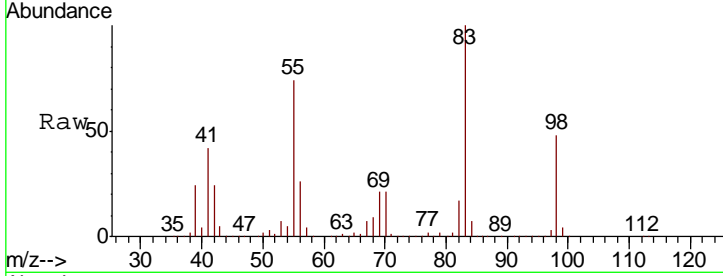




#45
 1,2-Dichloropropane
 Concen: 4.719 ug/l
 RT: 7.46 min Scan# 1034
 Delta R.T. -0.05 min
 Lab File: VX010917.D
 Acq: 16 Jul 2019 19:25

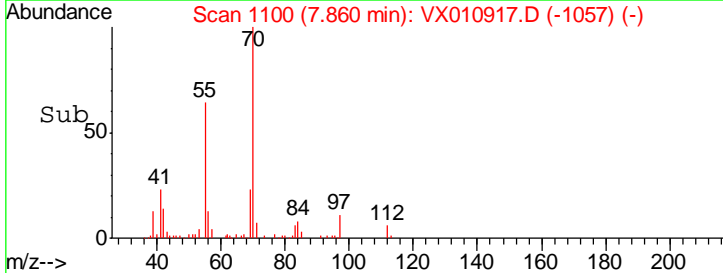
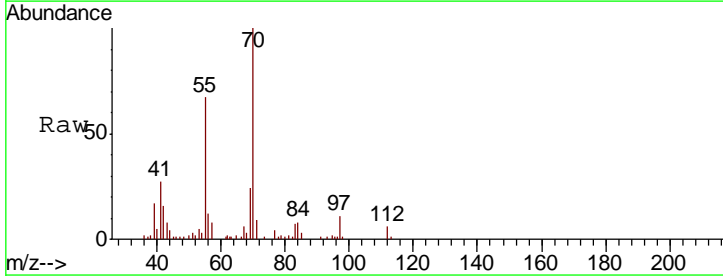
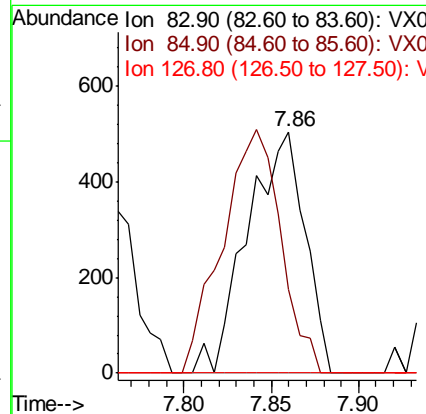
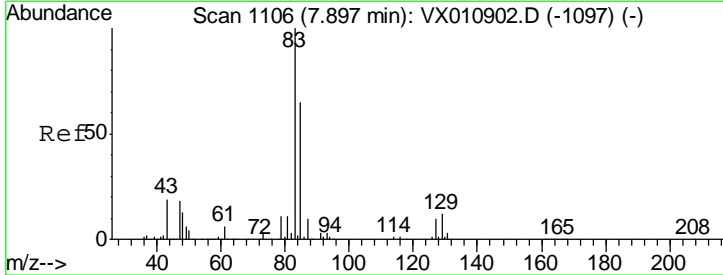
Instrument : MSVOA_X
 ClientSampled : FL-0611

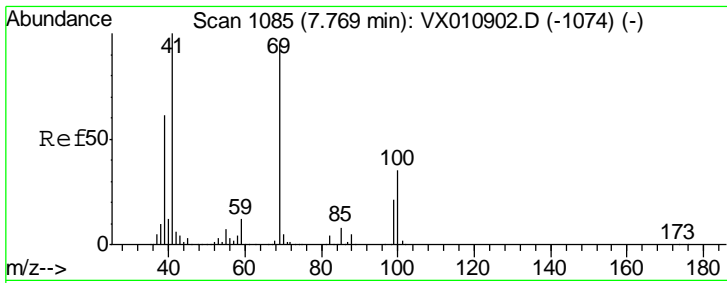
Tgt Ion: 63 Resp: 10983
 Ion Ratio Lower Upper
 63 100
 65 171.3 24.4 36.6#



#47
 Bromodichloromethane
 Concen: 0.388 ug/l
 RT: 7.86 min Scan# 1100
 Delta R.T. -0.04 min
 Lab File: VX010917.D
 Acq: 16 Jul 2019 19:25

Tgt Ion: 83 Resp: 1150
 Ion Ratio Lower Upper
 83 100
 85 34.5 52.5 78.7#
 127 0.0 7.8 11.8#

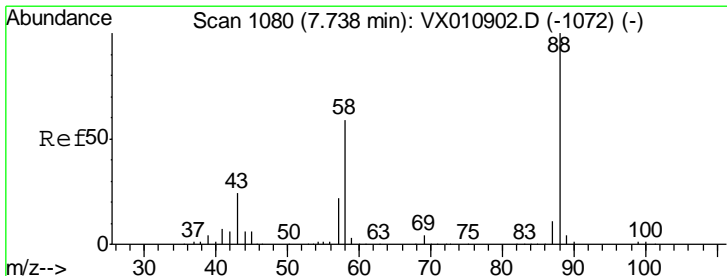
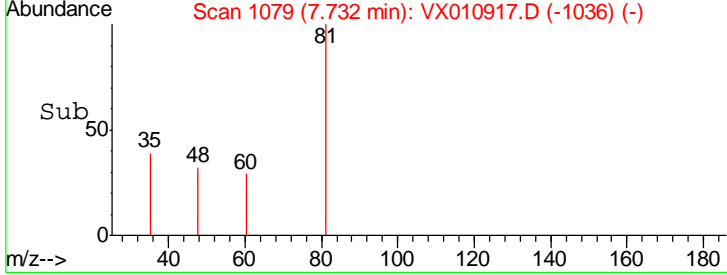
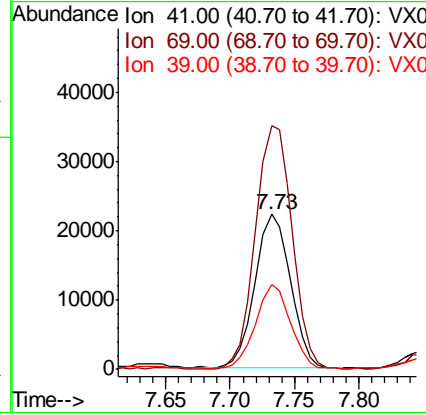
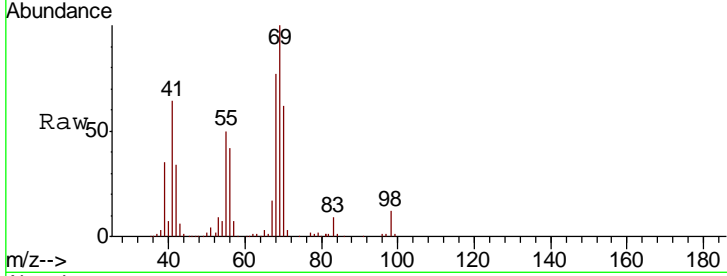




#48
 Methyl methacrylate
 Concen: 17.443 ug/l
 RT: 7.73 min Scan# 1079
 Delta R.T. -0.04 min
 Lab File: VX010917.D
 Acq: 16 Jul 2019 19:25

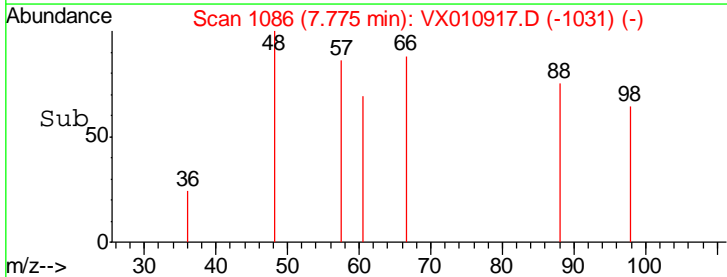
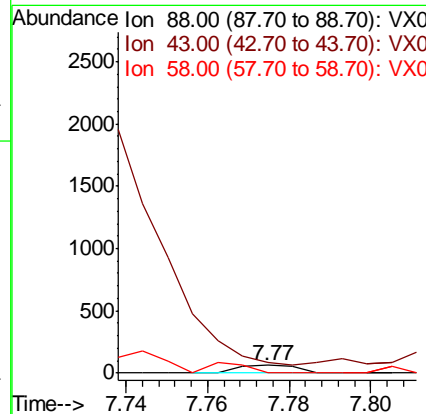
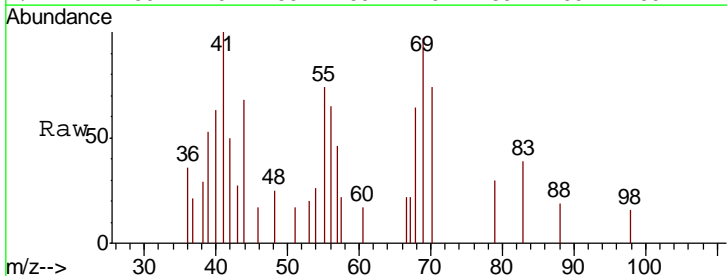
Instrument :
 MSVOA_X
 ClientSampled :
 FL-0611

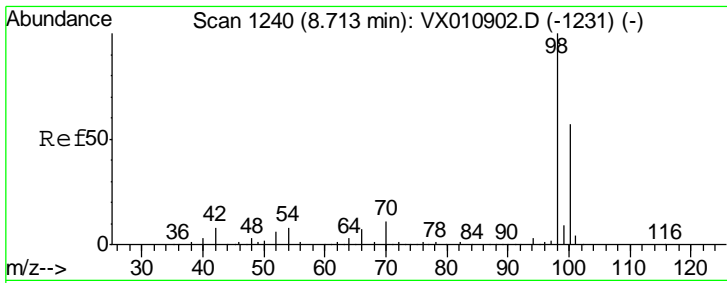
Tgt Ion	Resp	Lower	Upper
41	42712		
69	162.7	74.4	111.6#
39	52.6	48.9	73.3



#49
 1,4-Dioxane
 Concen: 0.920 ug/l
 RT: 7.77 min Scan# 1086
 Delta R.T. 0.04 min
 Lab File: VX010917.D
 Acq: 16 Jul 2019 19:25

Tgt Ion	Resp	Lower	Upper
88	63		
88	100		
43	0.0	22.9	34.3#
58	0.0	49.8	74.8#

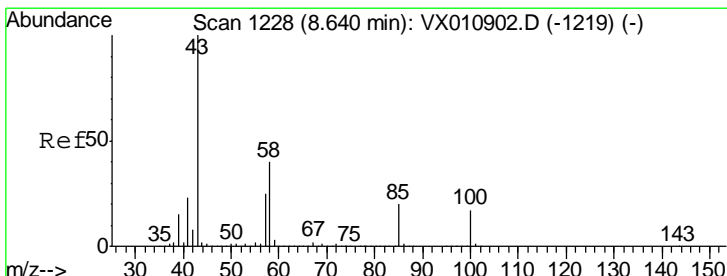
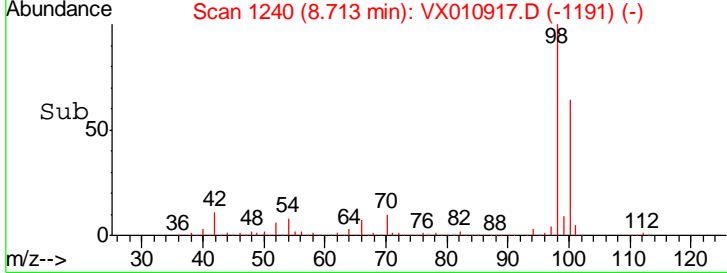
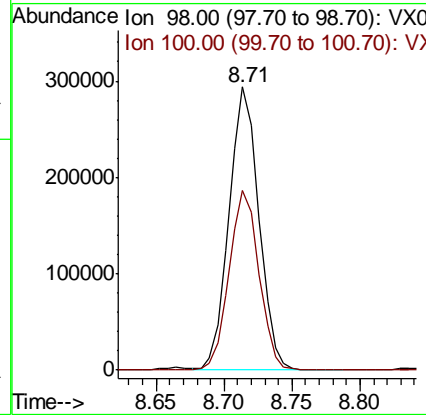
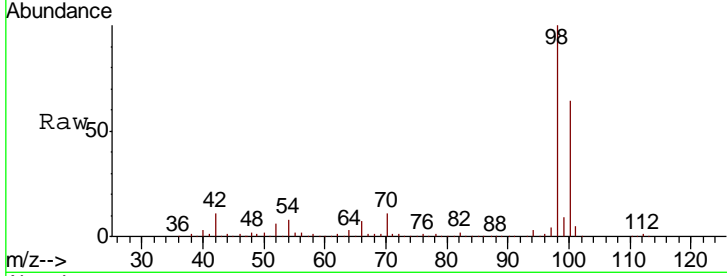




#50
 Toluene-d8
 Concen: 51.658 ug/l
 RT: 8.71 min Scan# 1240
 Delta R.T. 0.00 min
 Lab File: VX010917.D
 Acq: 16 Jul 2019 19:25

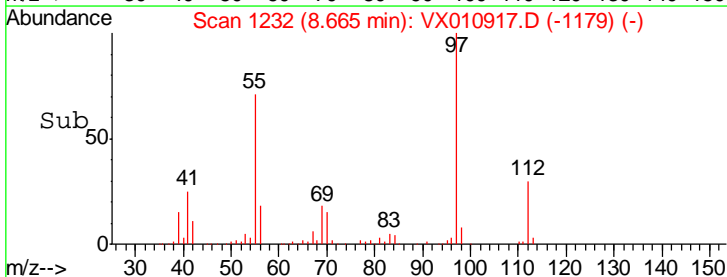
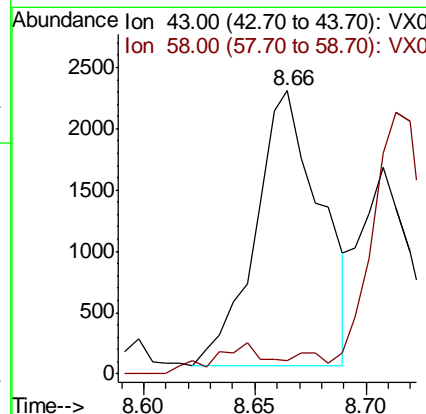
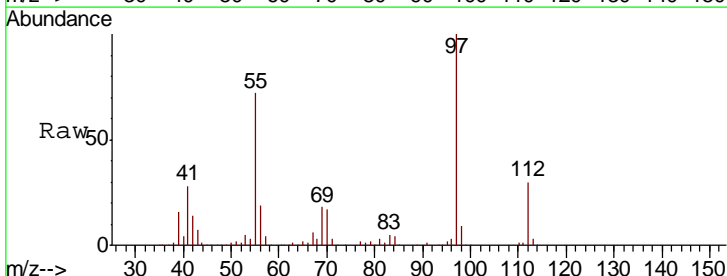
Instrument :
 MSVOA_X
 ClientSampled :
 FL-0611

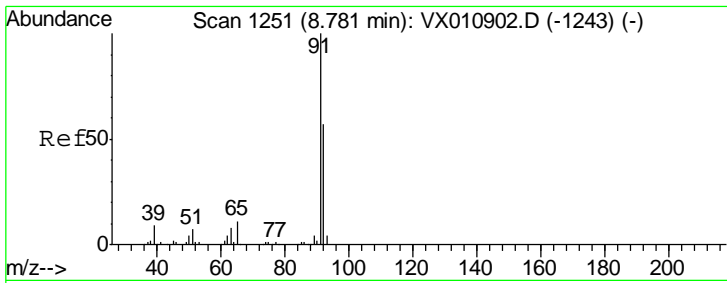
Tgt Ion: 98 Resp: 446955
 Ion Ratio Lower Upper
 98 100
 100 63.5 50.6 75.8



#51
 4-Methyl-2-Pentanone
 Concen: 1.397 ug/l
 RT: 8.66 min Scan# 1232
 Delta R.T. 0.02 min
 Lab File: VX010917.D
 Acq: 16 Jul 2019 19:25

Tgt Ion: 43 Resp: 4553
 Ion Ratio Lower Upper
 43 100
 58 9.5 32.2 48.4#

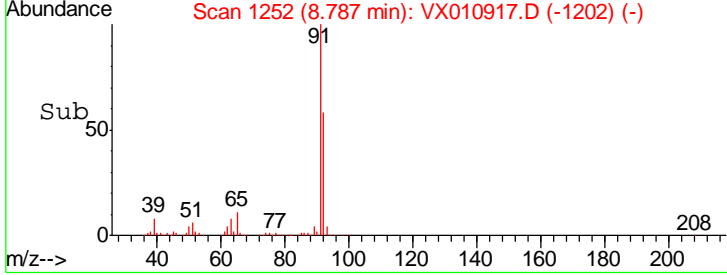
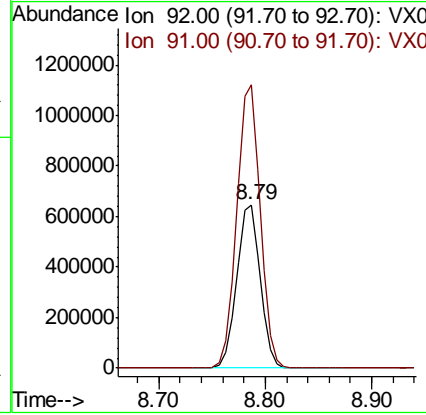
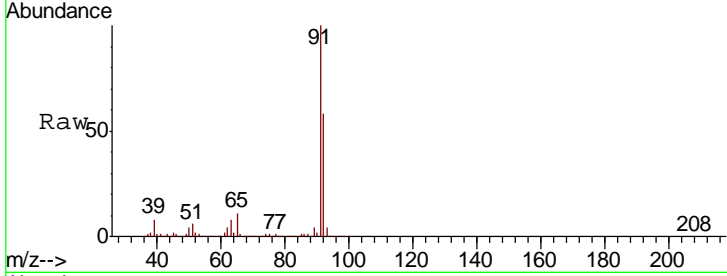




#52
 Toluene
 Concen: 166.635 ug/l
 RT: 8.79 min Scan# 1252
 Delta R.T. 0.01 min
 Lab File: VX010917.D
 Acq: 16 Jul 2019 19:25

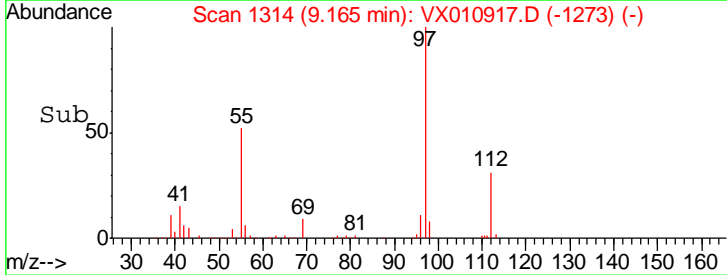
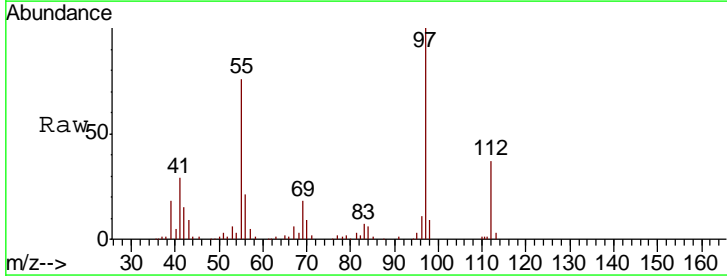
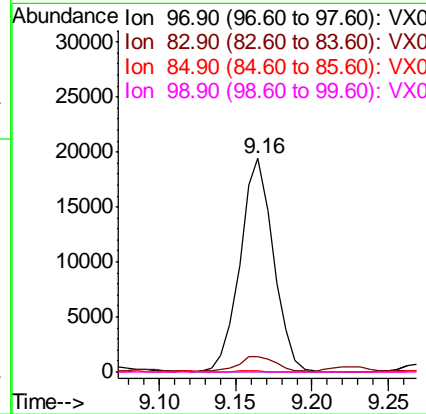
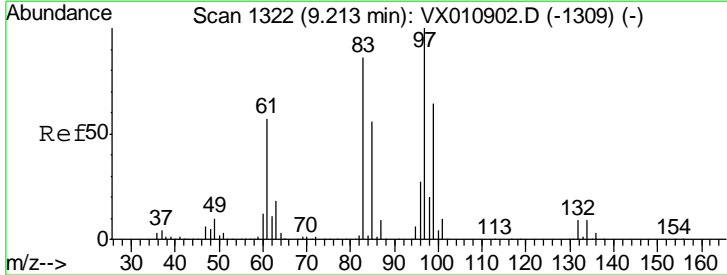
Instrument : MSVOA_X
 ClientSampled : FL-0611

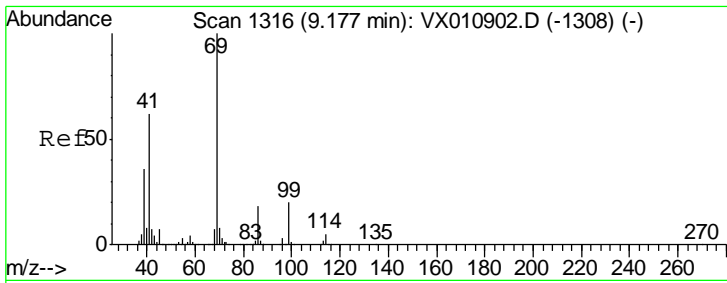
Tgt Ion	Resp	Lower	Upper
92	100		
91	174.0	139.4	209.0



#55
 1,1,2-Trichloroethane
 Concen: 11.865 ug/l
 RT: 9.16 min Scan# 1314
 Delta R.T. -0.05 min
 Lab File: VX010917.D
 Acq: 16 Jul 2019 19:25

Tgt Ion	Resp	Lower	Upper
97	100		
83	7.2	69.2	103.8#
85	0.7	44.6	66.8#
99	0.0	51.2	76.8#

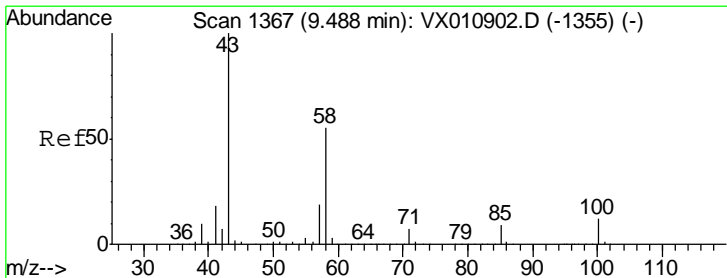
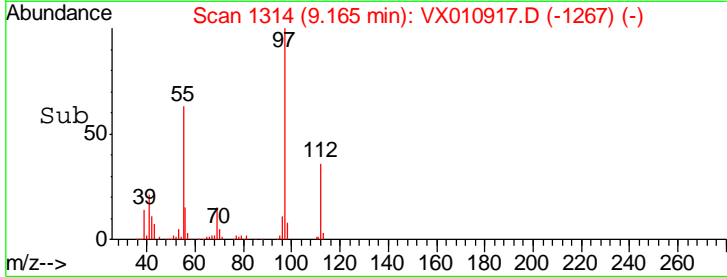
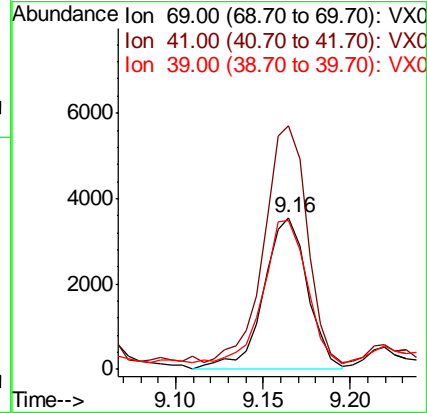
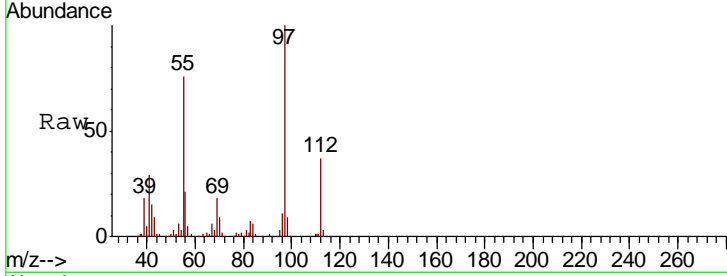




#56
Ethyl methacrylate
Concen: 1.720 ug/l
RT: 9.16 min Scan# 1314
Delta R.T. -0.01 min
Lab File: VX010917.D
Acq: 16 Jul 2019 19:25

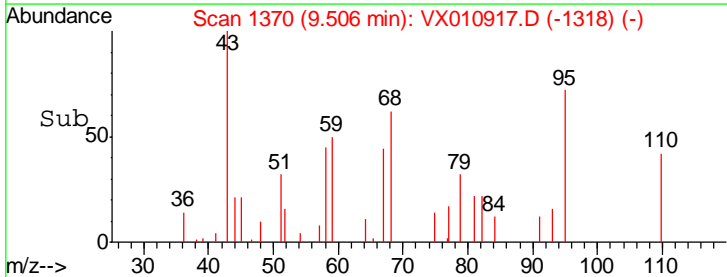
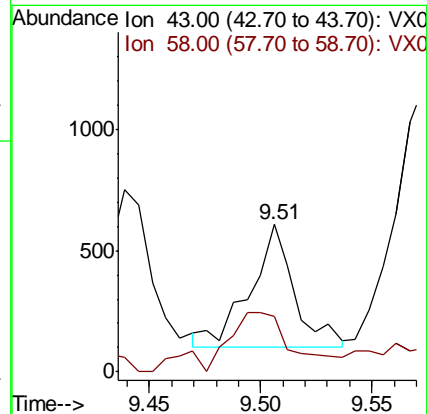
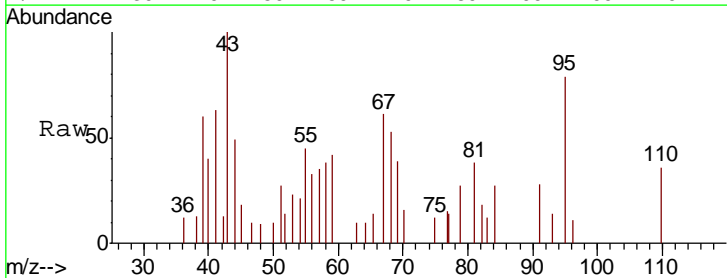
Instrument :
MSVOA_X
ClientSampled :
FL-0611

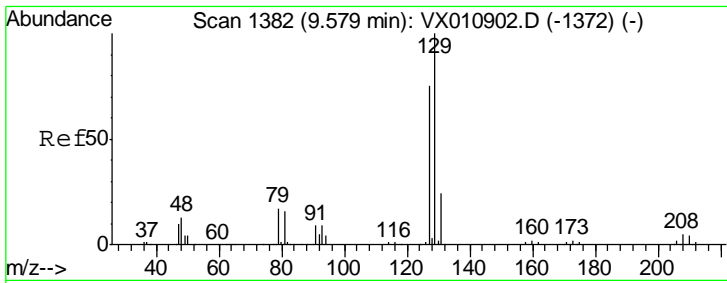
Tgt Ion	Resp	Lower	Upper
69	100		
41	153.5	49.7	74.5#
39	93.5	29.6	44.4#



#59
2-Hexanone
Concen: 0.273 ug/l
RT: 9.51 min Scan# 1370
Delta R.T. 0.02 min
Lab File: VX010917.D
Acq: 16 Jul 2019 19:25

Tgt Ion	Resp	Lower	Upper
43	100		
58	70.5	28.0	83.9

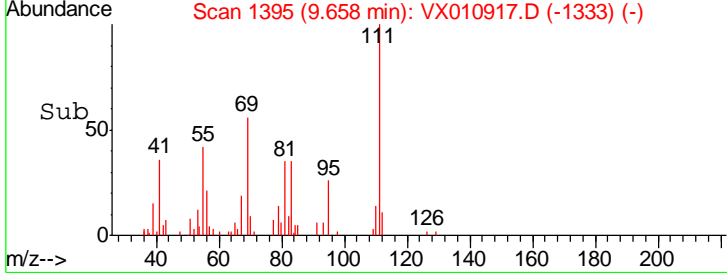
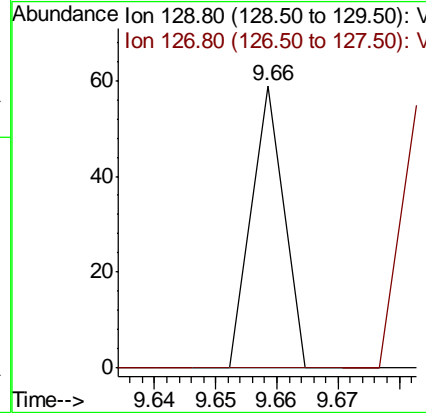
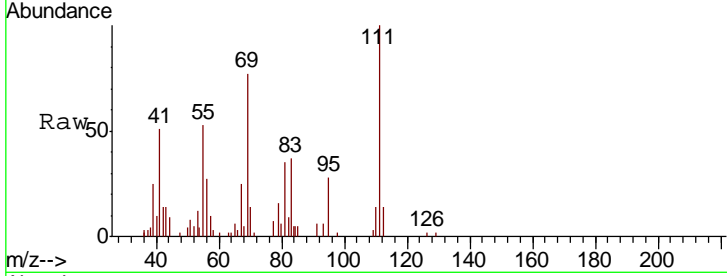




#60
 Dibromochloromethane
 Concen: 2.535 ug/l
 RT: 9.66 min Scan# 1395
 Delta R.T. 0.08 min
 Lab File: VX010917.D
 Acq: 16 Jul 2019 19:25

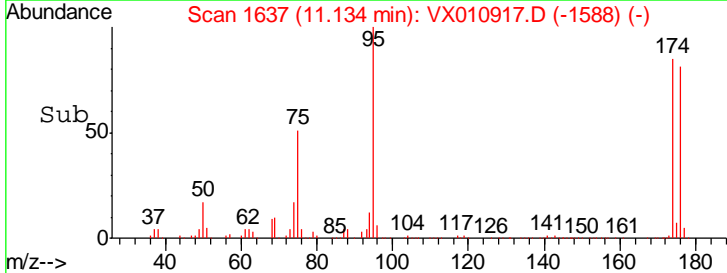
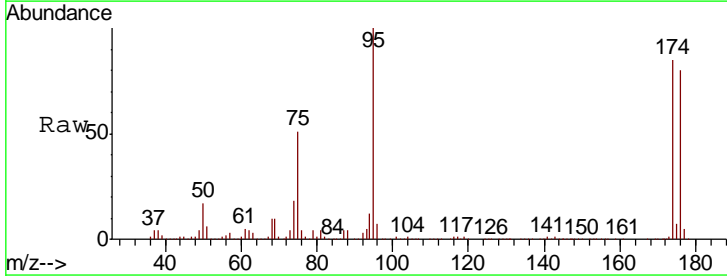
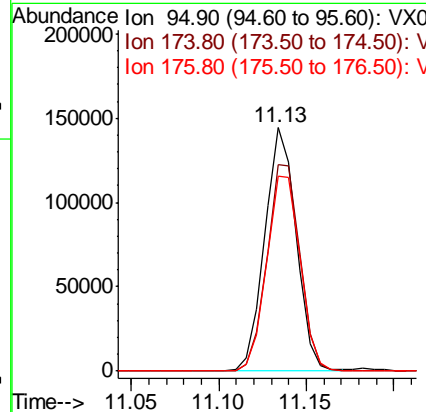
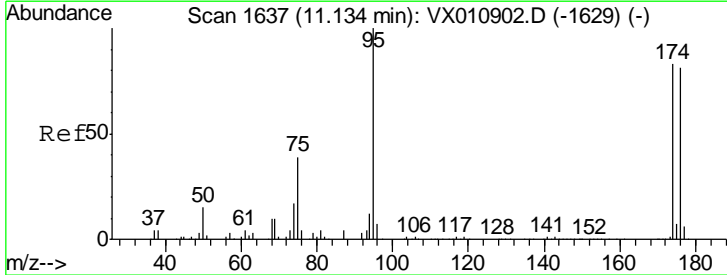
Instrument :
 MSVOA_X
ClientSampled :
 FL-0611

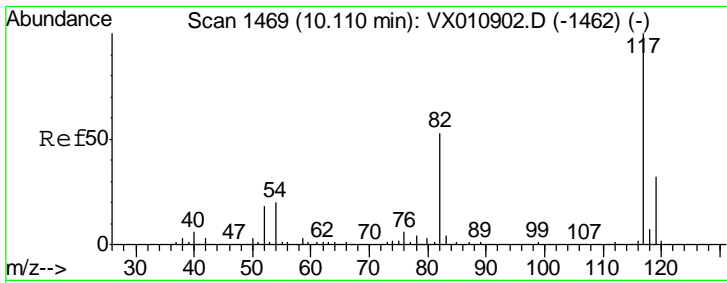
Tgt Ion	Resp	Lower	Upper
129	100		
127	0.0	38.6	115.8#



#62
 4-Bromofluorobenzene
 Concen: 56.716 ug/l
 RT: 11.13 min Scan# 1637
 Delta R.T. 0.00 min
 Lab File: VX010917.D
 Acq: 16 Jul 2019 19:25

Tgt Ion	Resp	Lower	Upper
95	100		
174	89.5	0.0	180.6
176	85.8	0.0	173.8

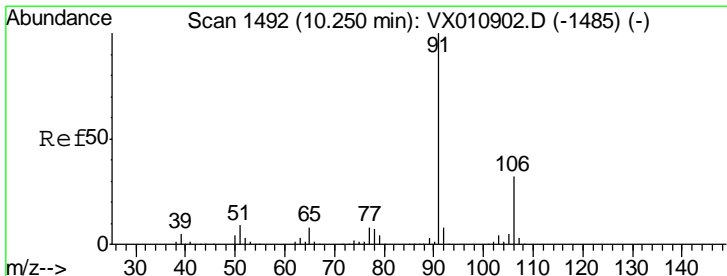
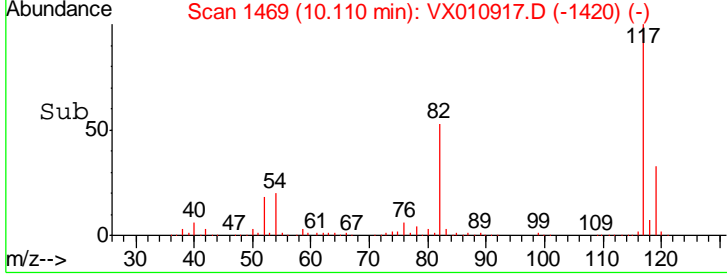
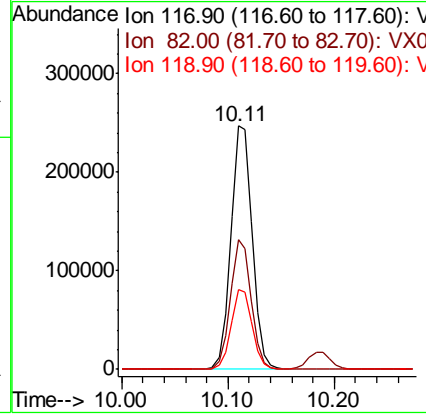
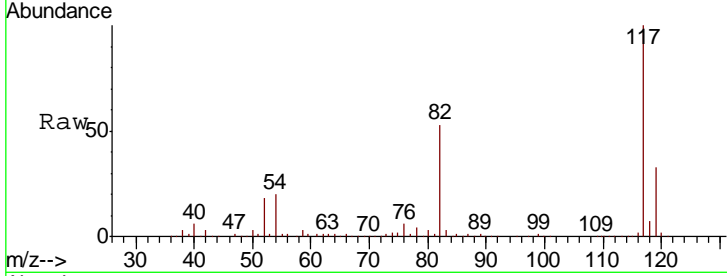




#63
 Chlorobenzene-d5
 Concen: 50.000 ug/l
 RT: 10.11 min Scan# 1469
 Delta R.T. -0.00 min
 Lab File: VX010917.D
 Acq: 16 Jul 2019 19:25

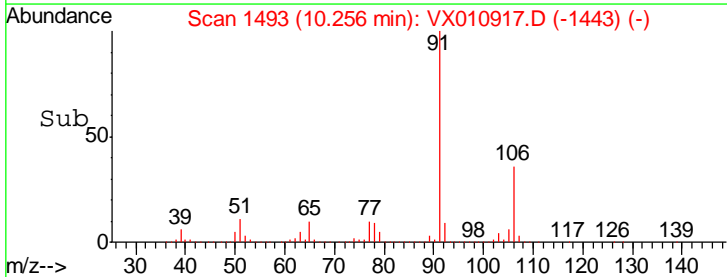
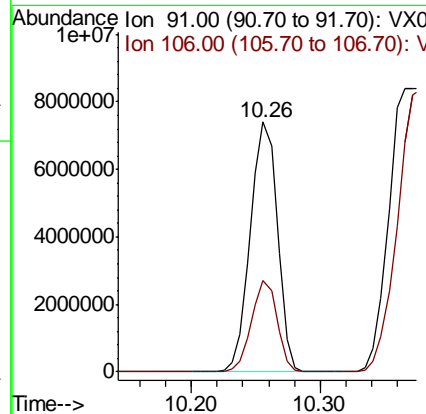
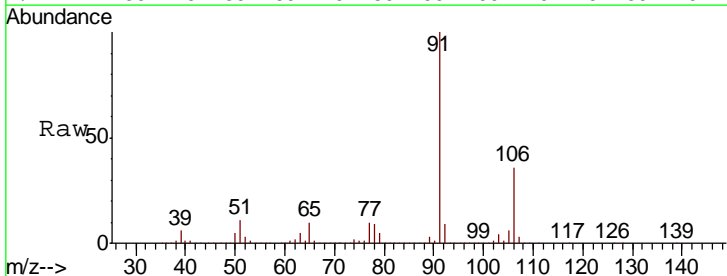
Instrument : MSVOA_X
 ClientSampled : FL-0611

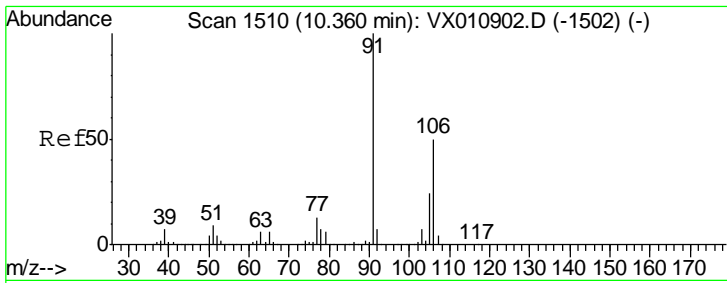
Tgt Ion	Resp	Lower	Upper
117	347249		
82	53.2	42.6	63.8
119	32.9	25.9	38.9



#67
 Ethyl Benzene
 Concen: 880.177 ug/l
 RT: 10.26 min Scan# 1493
 Delta R.T. 0.01 min
 Lab File: VX010917.D
 Acq: 16 Jul 2019 19:25

Tgt Ion	Resp	Lower	Upper
91	10685246		
106	36.4	25.4	38.2

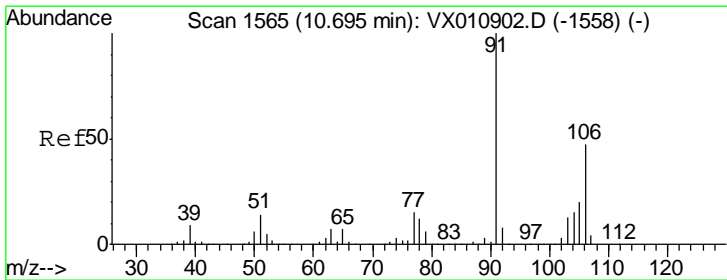
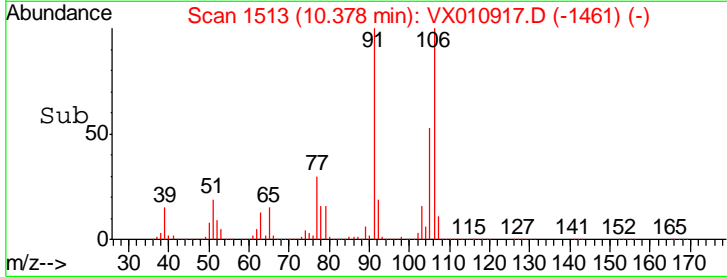
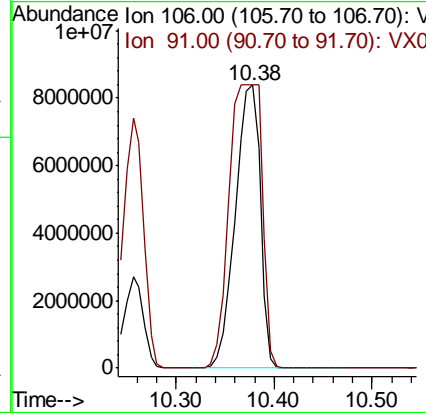
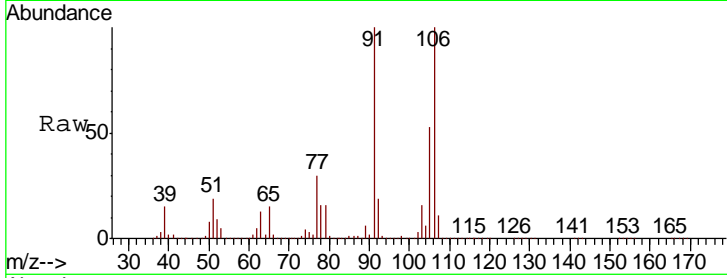




#68
 m/p-Xylenes
 Concen: 3182.408 ug/l
 RT: 10.38 min Scan# 1513
 Delta R.T. 0.02 min
 Lab File: VX010917.D
 Acq: 16 Jul 2019 19:25

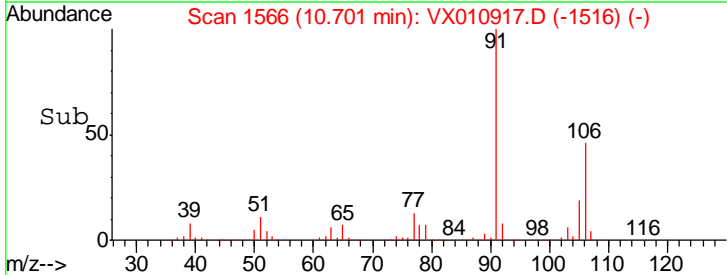
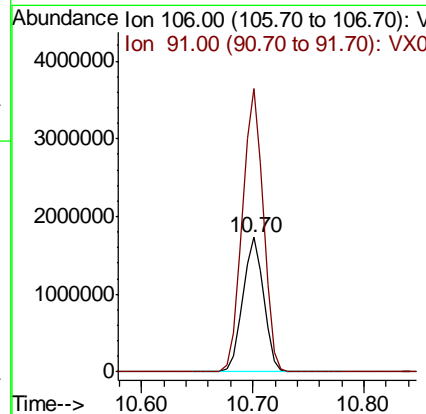
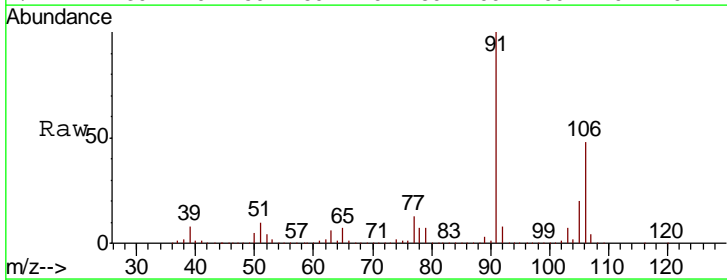
Instrument :
 MSVOA_X
 ClientSampled :
 FL-0611

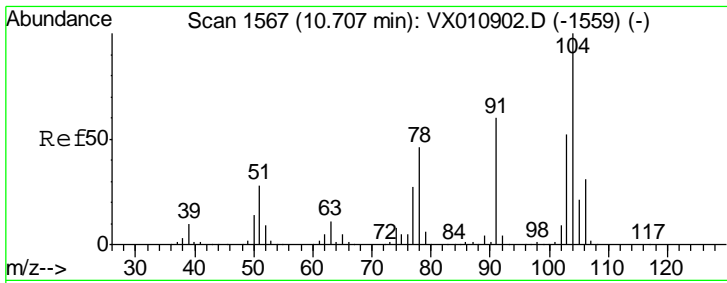
Tgt Ion:106 Resp:14819690
 Ion Ratio Lower Upper
 106 100
 91 132.4 160.1 240.1#



#69
 o-Xylene
 Concen: 492.226 ug/l
 RT: 10.70 min Scan# 1566
 Delta R.T. 0.01 min
 Lab File: VX010917.D
 Acq: 16 Jul 2019 19:25

Tgt Ion:106 Resp: 2237048
 Ion Ratio Lower Upper
 106 100
 91 211.3 105.1 315.3

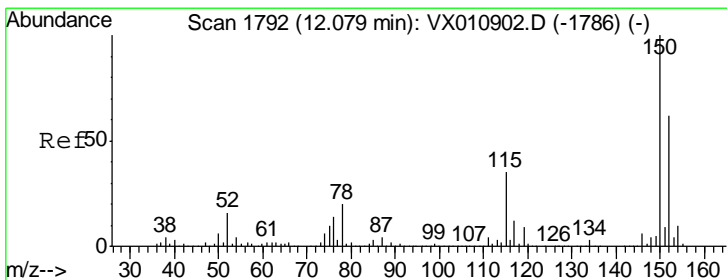
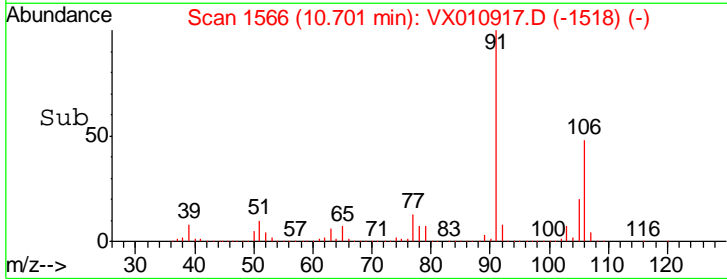
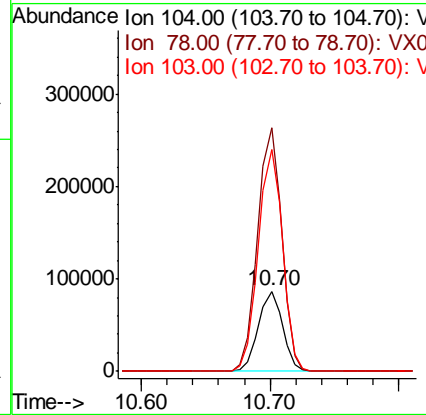
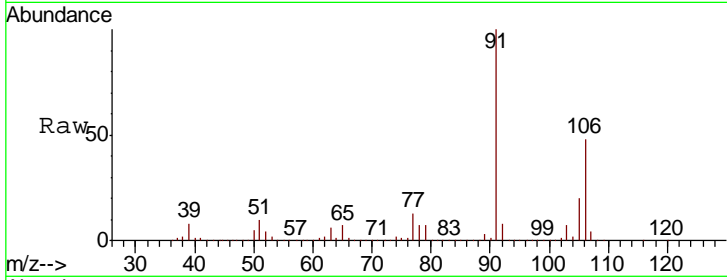




#70
 Styrene
 Concen: 14.836 ug/l
 RT: 10.70 min Scan# 1566
 Delta R.T. -0.01 min
 Lab File: VX010917.D
 Acq: 16 Jul 2019 19:25

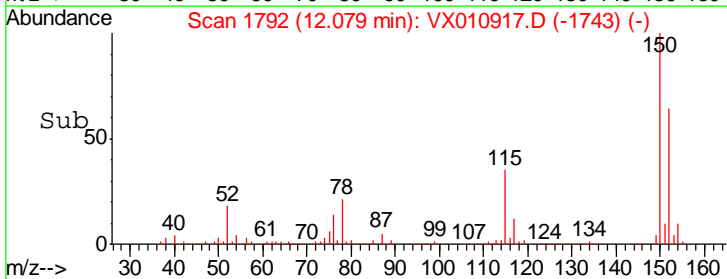
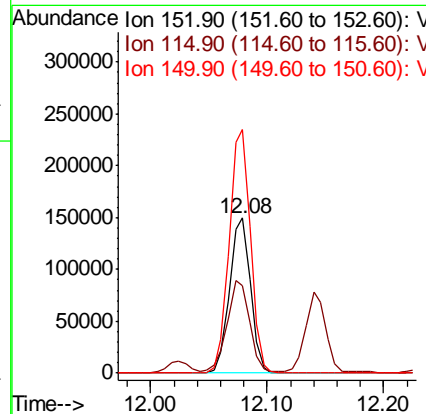
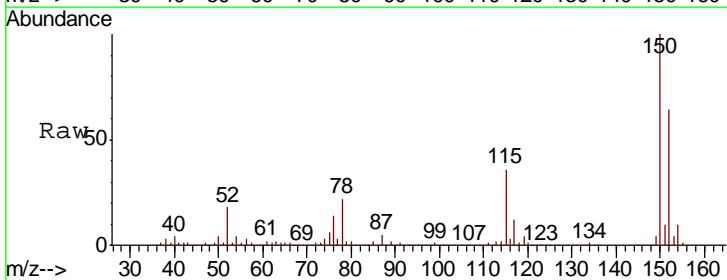
Instrument :
 MSVOA_X
 ClientSampled :
 FL-0611

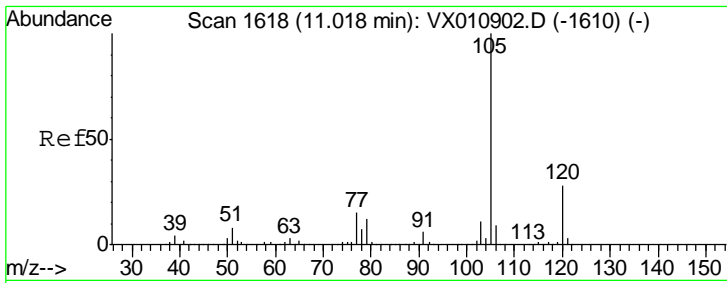
Tgt Ion	Resp	Lower	Upper
104	112396		
78	301.4	38.8	58.2#
103	276.4	44.2	66.4#



#72
 1,4-Dichlorobenzene-d4
 Concen: 50.000 ug/l
 RT: 12.08 min Scan# 1792
 Delta R.T. 0.00 min
 Lab File: VX010917.D
 Acq: 16 Jul 2019 19:25

Tgt Ion	Resp	Lower	Upper
152	186880		
115	63.2	39.7	119.1
150	157.8	0.0	345.6



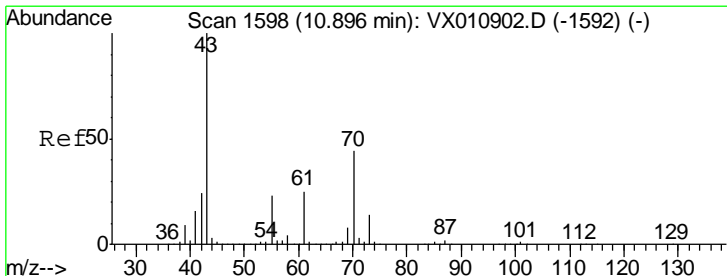
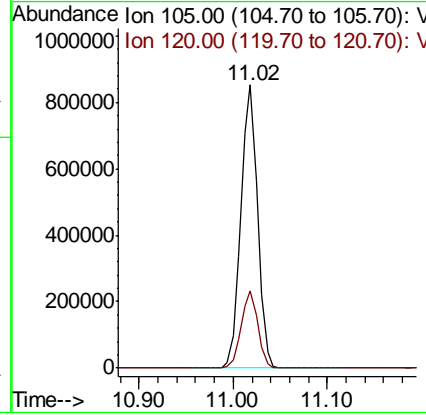
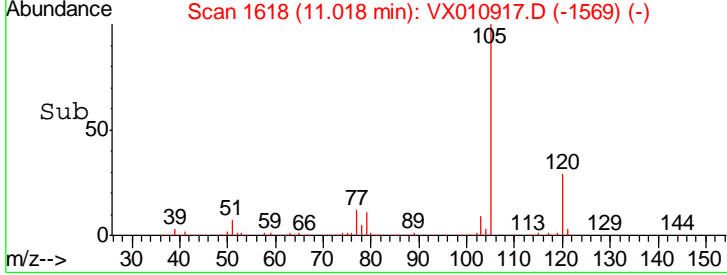
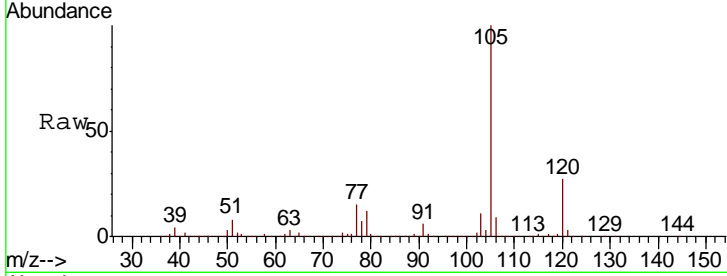


#73
 Isopropylbenzene
 Concen: 82.719 ug/l
 RT: 11.02 min Scan# 1618
 Delta R.T. 0.00 min
 Lab File: VX010917.D
 Acq: 16 Jul 2019 19:25

Instrument : MSVOA_X
 ClientSampled : FL-0611

Tgt Ion: 105 Resp: 1044530

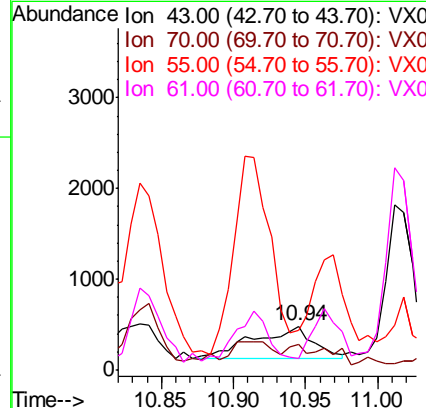
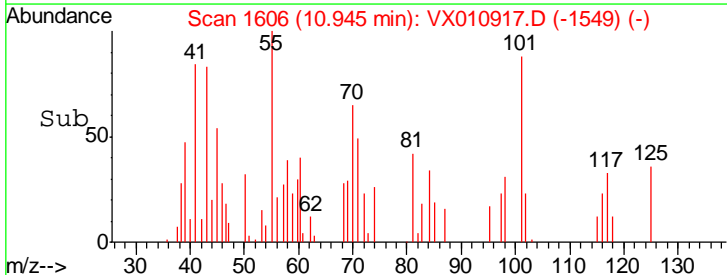
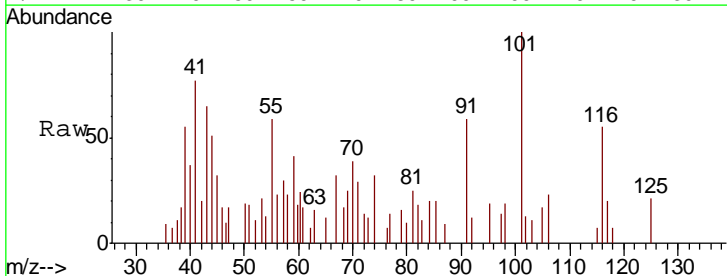
Ion	Ratio	Lower	Upper
105	100		
120	27.2	13.7	41.1

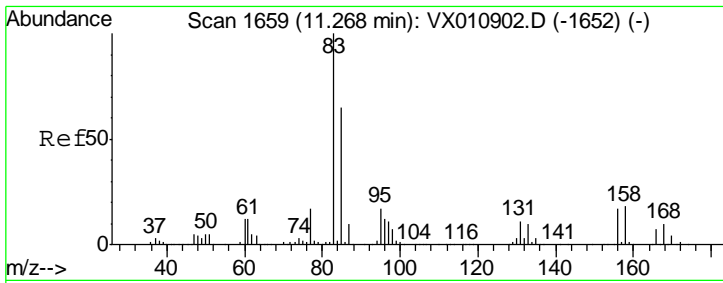


#74
 N-amyl acetate
 Concen: 0.215 ug/l
 RT: 10.94 min Scan# 1606
 Delta R.T. 0.05 min
 Lab File: VX010917.D
 Acq: 16 Jul 2019 19:25

Tgt Ion: 43 Resp: 1037

Ion	Ratio	Lower	Upper
43	100		
70	8.0	34.7	52.1#
55	0.0	19.1	28.7#
61	0.0	19.9	29.9#

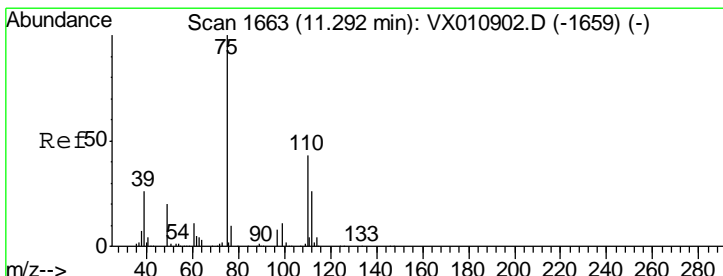
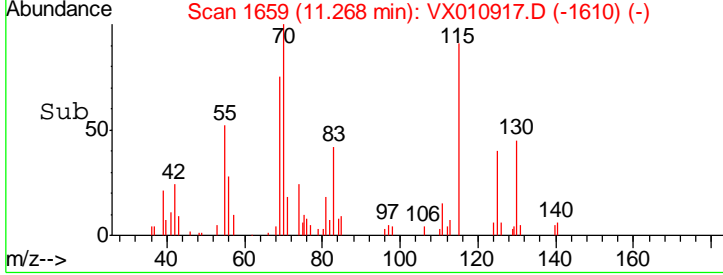
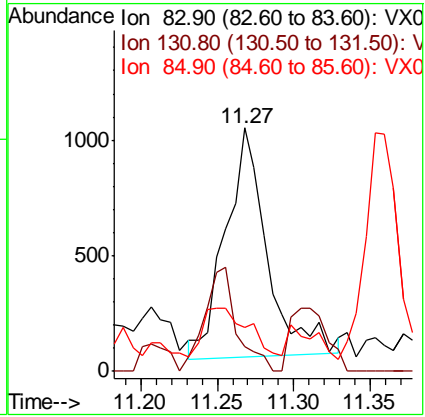
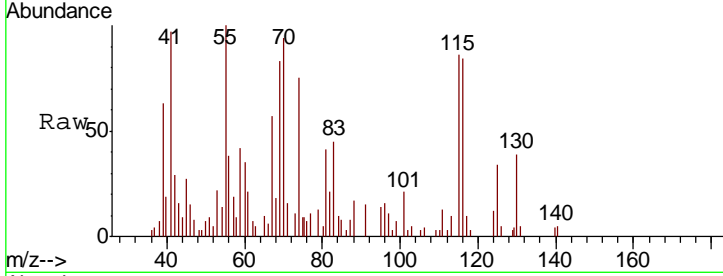




#75
 1,1,2,2-Tetrachloroethane
 Concen: 0.455 ug/l
 RT: 11.27 min Scan# 1659
 Delta R.T. 0.00 min
 Lab File: VX010917.D
 Acq: 16 Jul 2019 19:25

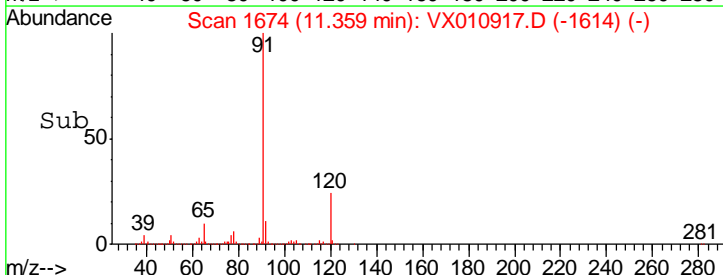
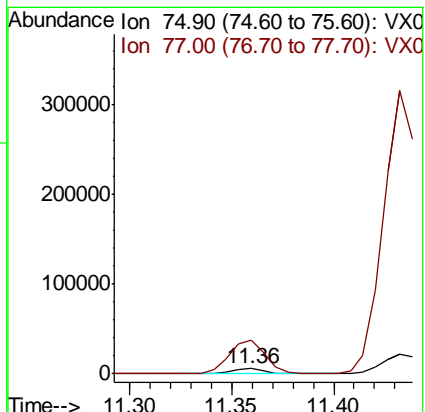
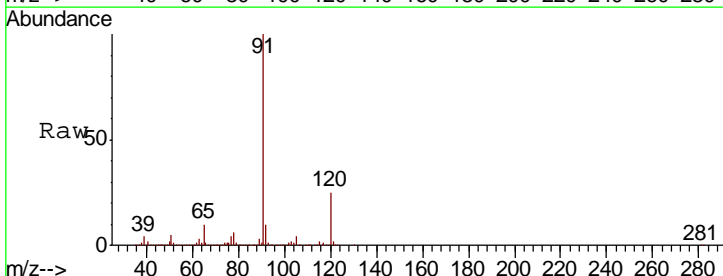
Instrument : MSVOA_X
 ClientSampled : FL-0611

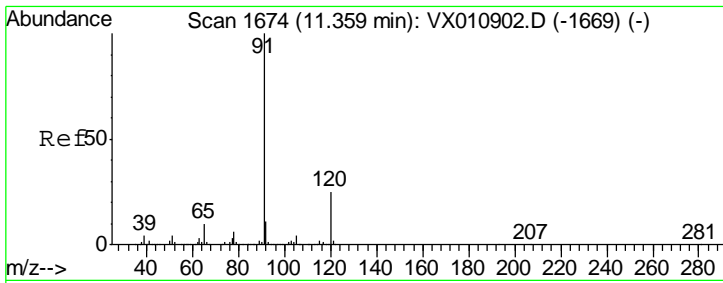
Tgt Ion	Resp	Lower	Upper
83	100		
131	34.9	5.5	16.4#
85	34.6	32.3	96.9



#76
 1,2,3-Trichloropropane
 Concen: 2.112 ug/l
 RT: 11.36 min Scan# 1674
 Delta R.T. 0.07 min
 Lab File: VX010917.D
 Acq: 16 Jul 2019 19:25

Tgt Ion	Resp	Lower	Upper
75	100		
77	636.8	21.3	64.0#



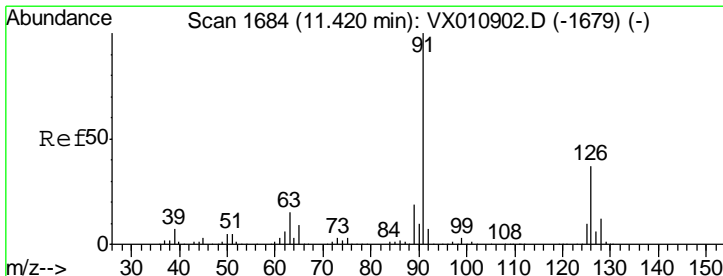
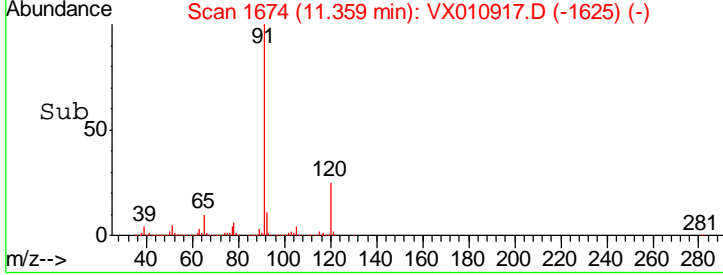
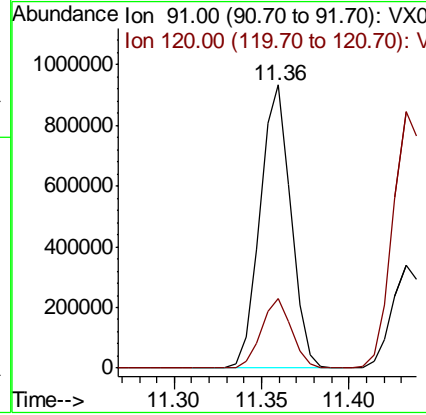
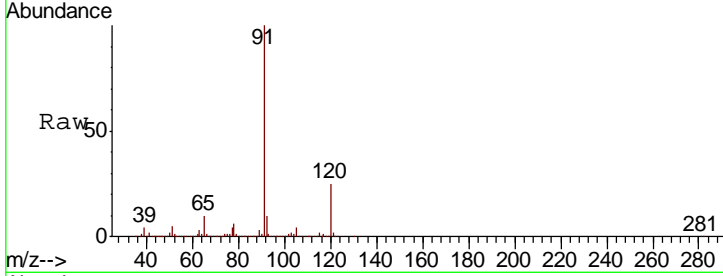


#78
 n-propylbenzene
 Concen: 81.547 ug/l
 RT: 11.36 min Scan# 1674
 Delta R.T. 0.00 min
 Lab File: VX010917.D
 Acq: 16 Jul 2019 19:25

Instrument : MSVOA_X
 ClientSampled : FL-0611

Tgt Ion: 91 Resp: 1137771

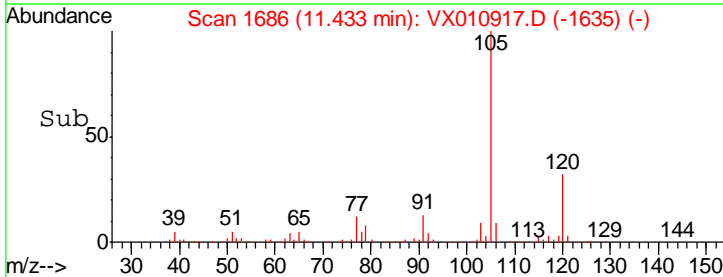
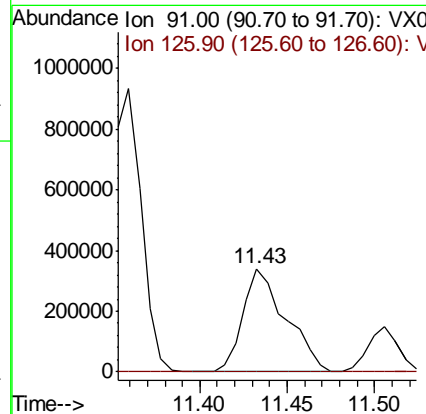
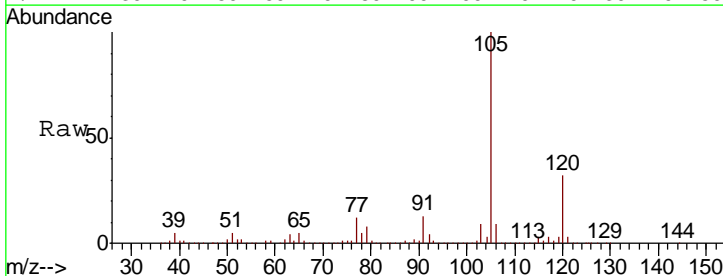
Ion	Ratio	Lower	Upper
91	100		
120	24.1	12.3	36.8

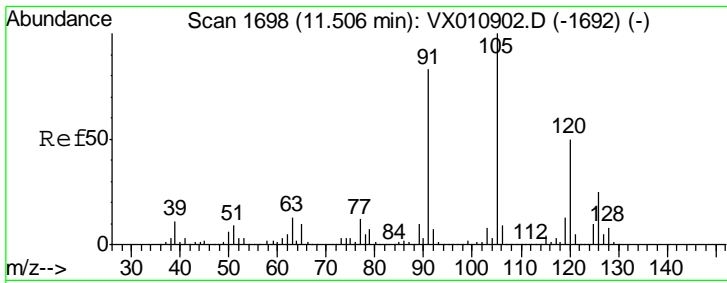


#79
 2-Chlorotoluene
 Concen: 69.222 ug/l
 RT: 11.43 min Scan# 1686
 Delta R.T. 0.01 min
 Lab File: VX010917.D
 Acq: 16 Jul 2019 19:25

Tgt Ion: 91 Resp: 580185

Ion	Ratio	Lower	Upper
91	100		
126	0.2	18.0	54.0#

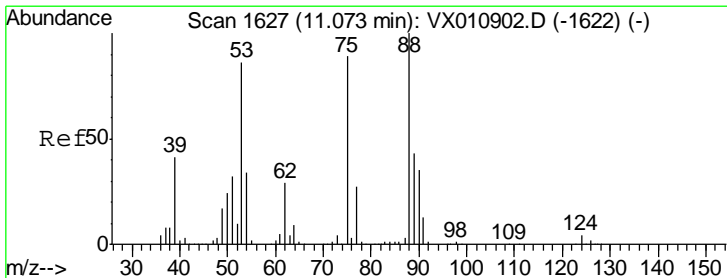
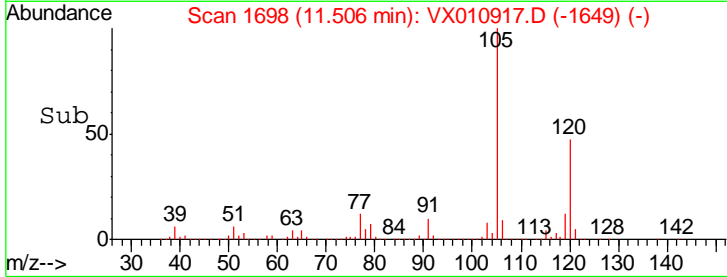
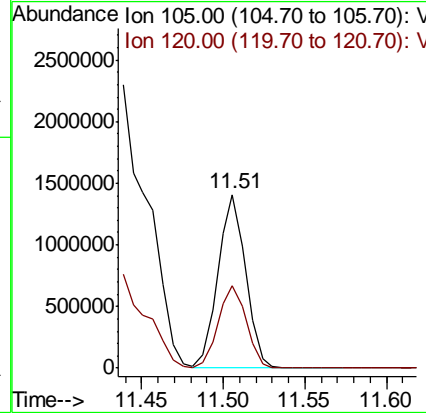
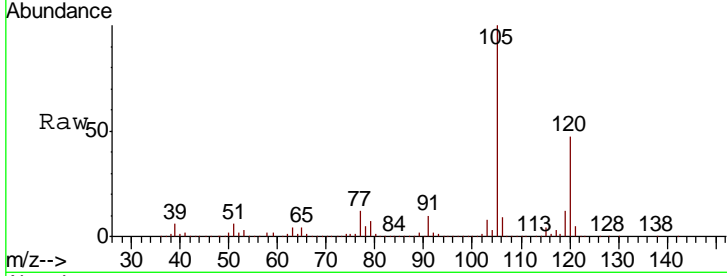




#80
 1,3,5-Trimethylbenzene
 Concen: 157.663 ug/l
 RT: 11.51 min Scan# 1698
 Delta R.T. 0.00 min
 Lab File: VX010917.D
 Acq: 16 Jul 2019 19:25

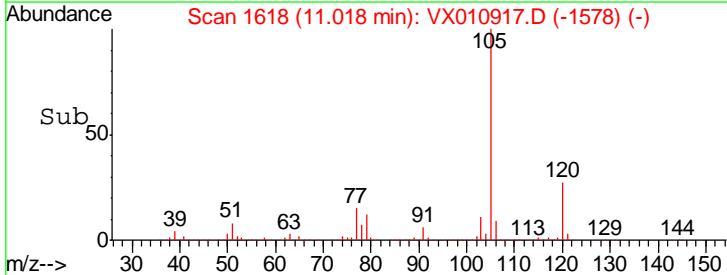
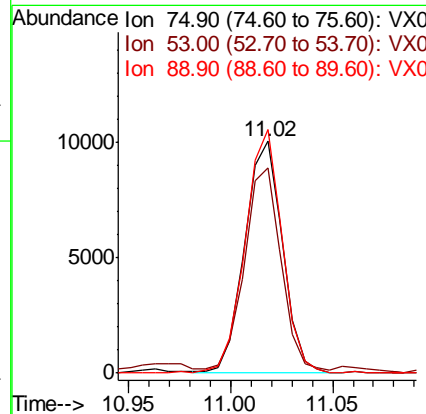
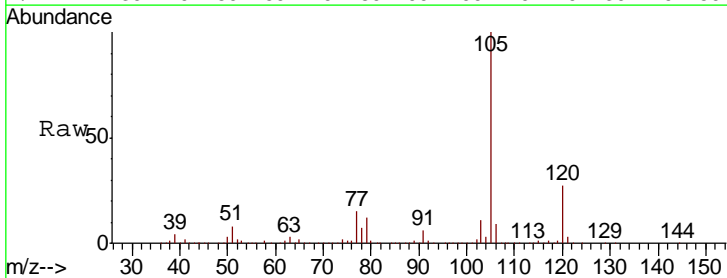
Instrument :
 MSVOA_X
 ClientSampled :
 FL-0611

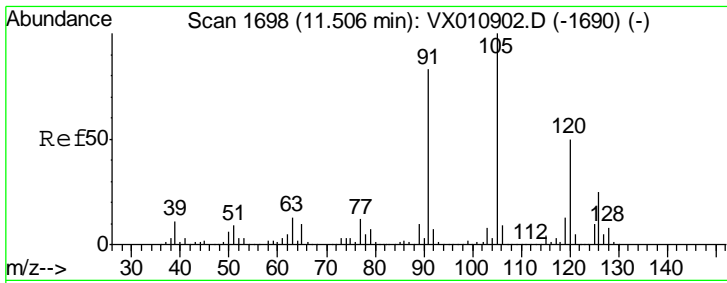
Tgt Ion: 105 Resp: 1663580
 Ion Ratio Lower Upper
 105 100
 120 48.5 24.6 73.8



#81
 trans-1,4-Dichloro-2-butene
 Concen: 12.901 ug/l
 RT: 11.02 min Scan# 1618
 Delta R.T. -0.05 min
 Lab File: VX010917.D
 Acq: 16 Jul 2019 19:25

Tgt Ion: 75 Resp: 12902
 Ion Ratio Lower Upper
 75 100
 53 83.1 76.7 115.1
 89 102.2 38.5 57.7#

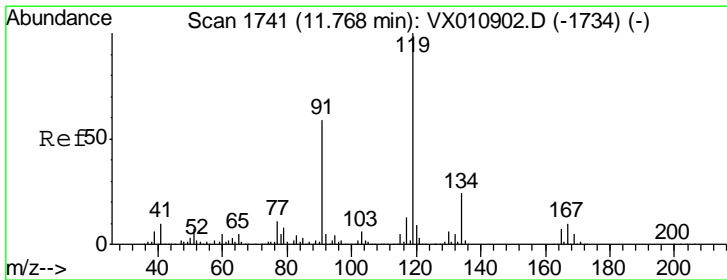
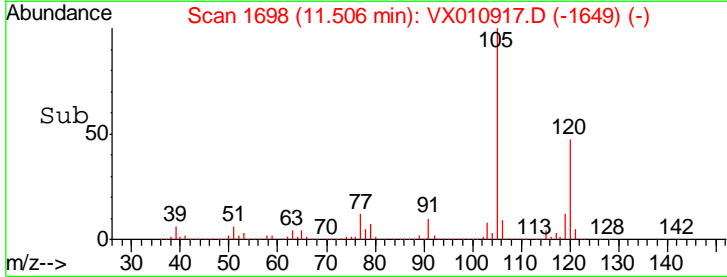
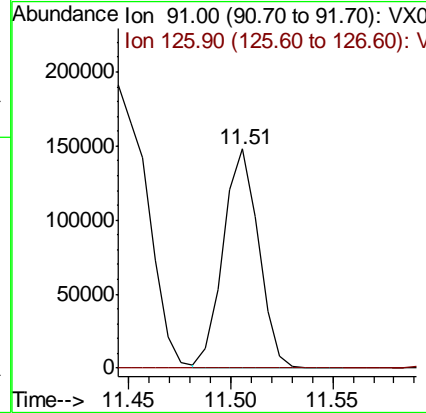
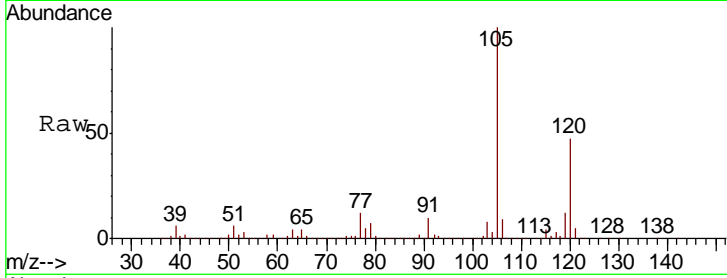




#82
 4-Chlorotoluene
 Concen: 18.078 ug/l
 RT: 11.51 min Scan# 1698
 Delta R.T. 0.00 min
 Lab File: VX010917.D
 Acq: 16 Jul 2019 19:25

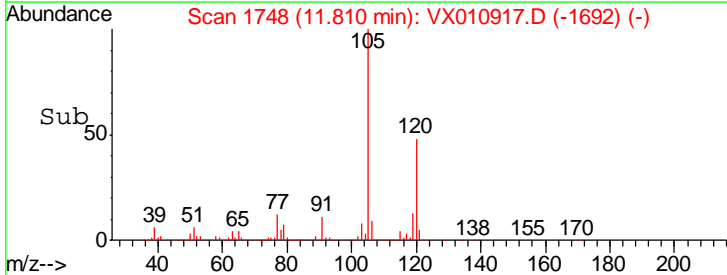
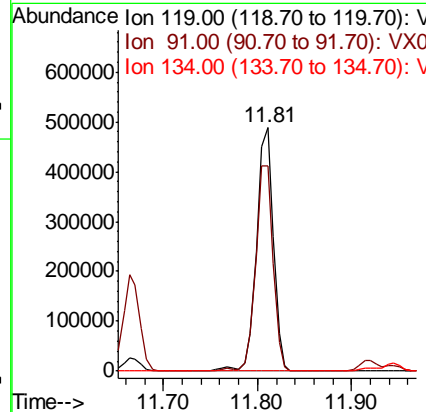
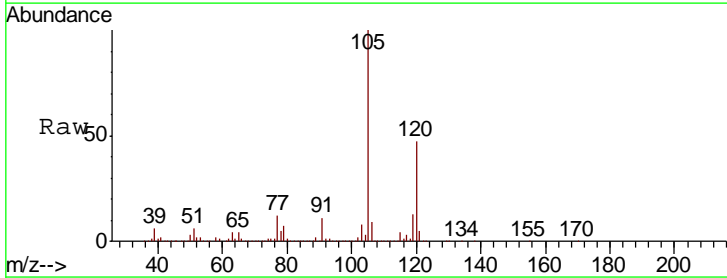
Instrument :
 MSVOA_X
 ClientSampled :
 FL-0611

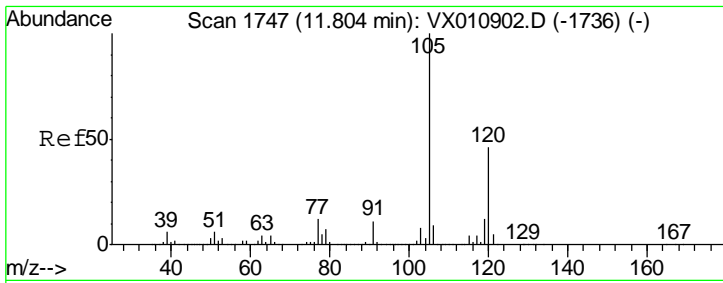
Tgt Ion: 91 Resp: 176356
 Ion Ratio Lower Upper
 91 100
 126 0.1 15.9 47.7#



#83
 tert-Butylbenzene
 Concen: 58.505 ug/l
 RT: 11.81 min Scan# 1748
 Delta R.T. 0.04 min
 Lab File: VX010917.D
 Acq: 16 Jul 2019 19:25

Tgt Ion: 119 Resp: 606362
 Ion Ratio Lower Upper
 119 100
 91 87.2 28.6 85.8#
 134 0.0 11.6 34.8#

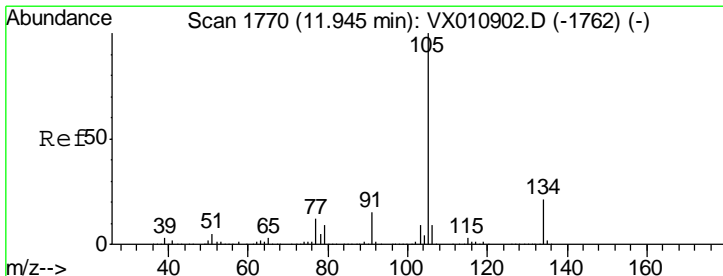
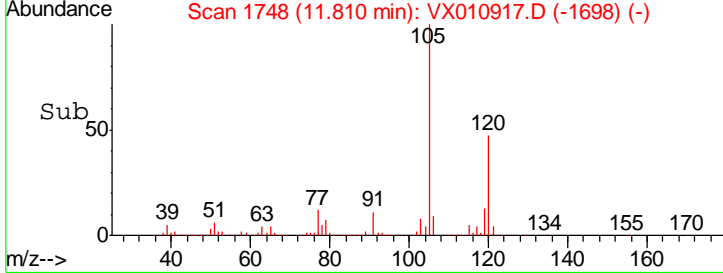
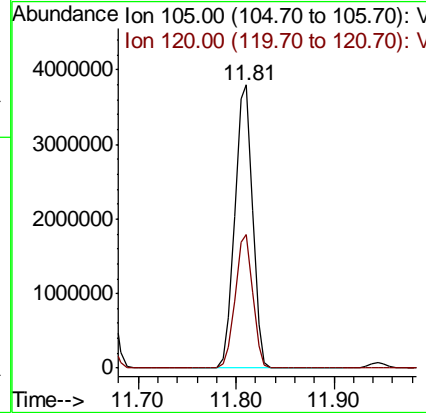
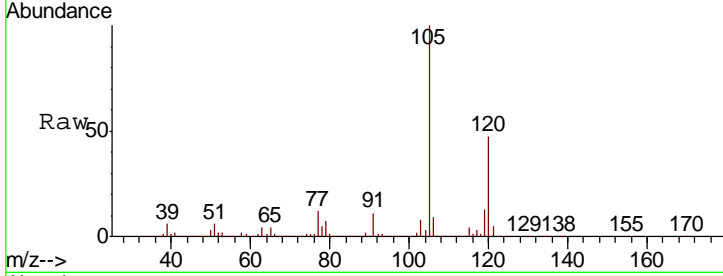




#84
 1,2,4-Trimethylbenzene
 Concen: 448.460 ug/l
 RT: 11.81 min Scan# 1748
 Delta R.T. 0.01 min
 Lab File: VX010917.D
 Acq: 16 Jul 2019 19:25

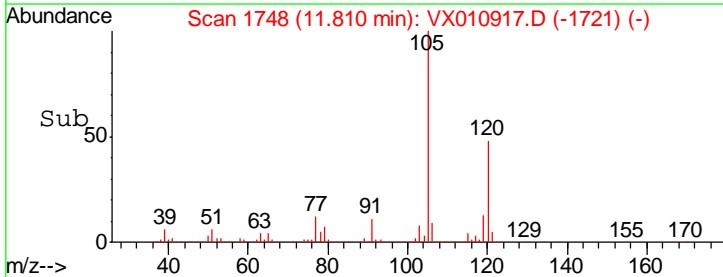
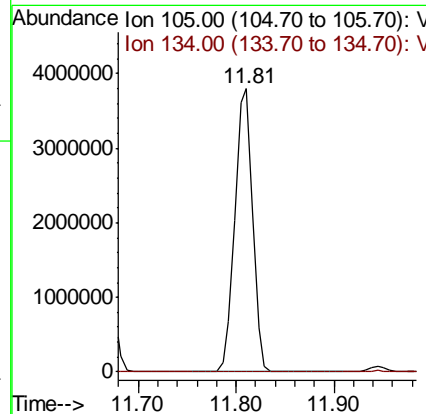
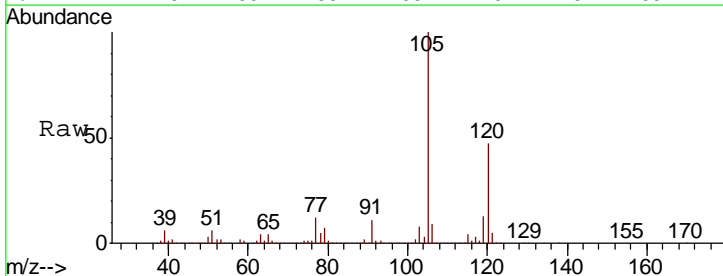
Instrument :
 MSVOA_X
 ClientSampled :
 FL-0611

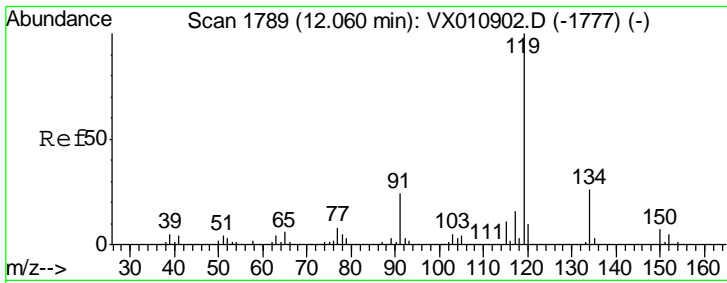
Tgt Ion:105 Resp: 4769319
 Ion Ratio Lower Upper
 105 100
 120 46.7 22.9 68.5



#85
 sec-Butylbenzene
 Concen: 392.725 ug/l
 RT: 11.81 min Scan# 1748
 Delta R.T. -0.13 min
 Lab File: VX010917.D
 Acq: 16 Jul 2019 19:25

Tgt Ion:105 Resp: 4769319
 Ion Ratio Lower Upper
 105 100
 134 0.0 10.4 31.4#

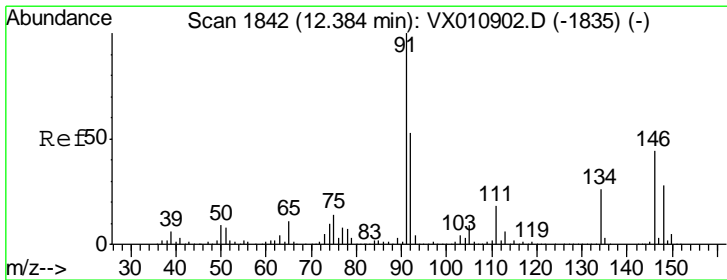
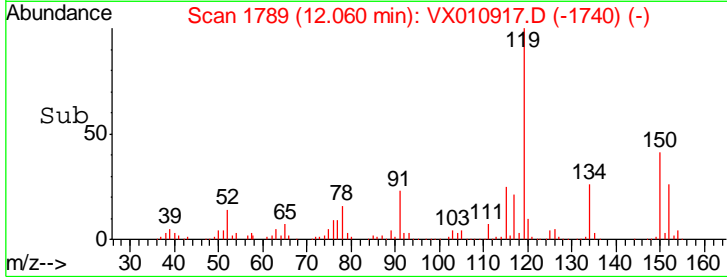
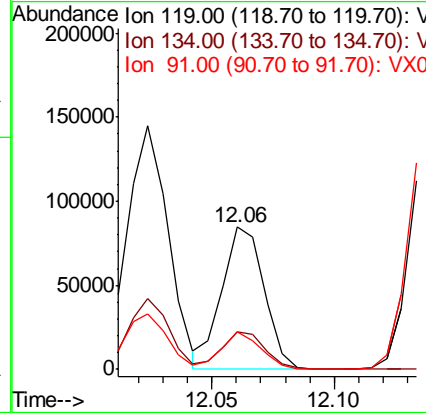
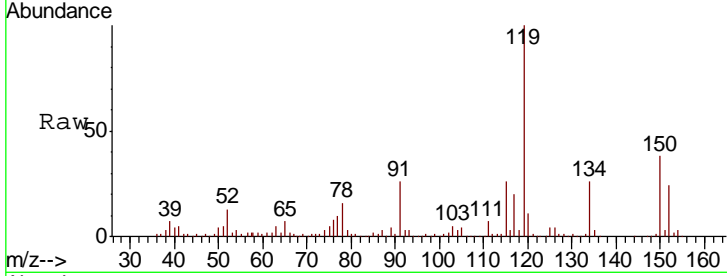




#86
 p-Isopropyltoluene
 Concen: 9.093 ug/l
 RT: 12.06 min Scan# 1789
 Delta R.T. -0.00 min
 Lab File: VX010917.D
 Acq: 16 Jul 2019 19:25

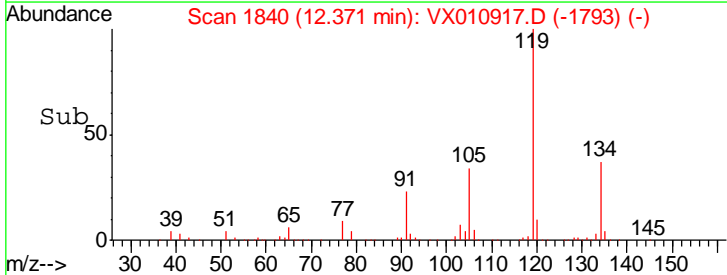
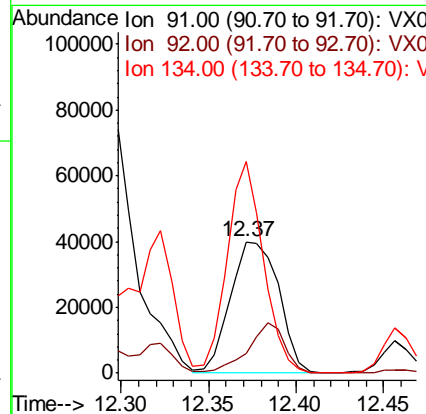
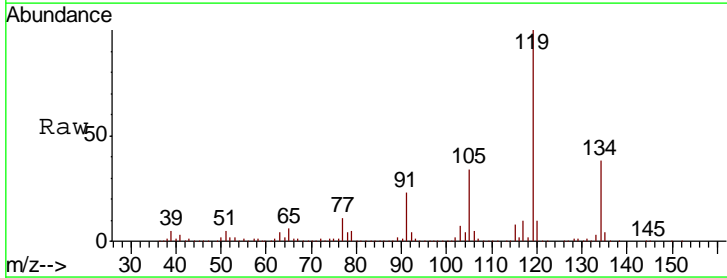
Instrument :
 MSVOA_X
 ClientSampled :
 FL-0611

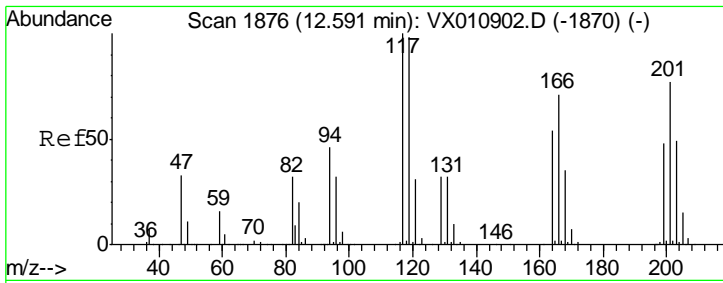
Tgt Ion	Resp	Lower	Upper
119	102095		
134	26.9	13.4	40.1
91	24.3	11.8	35.4



#89
 n-Butylbenzene
 Concen: 7.983 ug/l
 RT: 12.37 min Scan# 1840
 Delta R.T. -0.01 min
 Lab File: VX010917.D
 Acq: 16 Jul 2019 19:25

Tgt Ion	Resp	Lower	Upper
91	76680		
92	28.5	26.2	78.5
134	120.4	13.8	41.3#

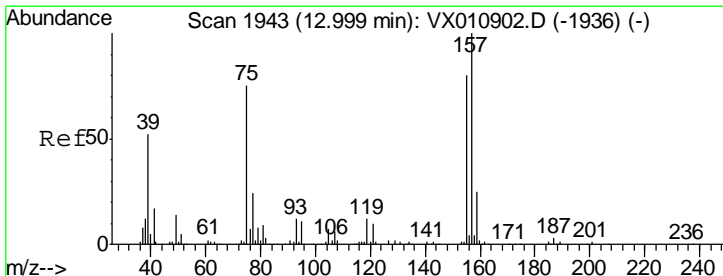
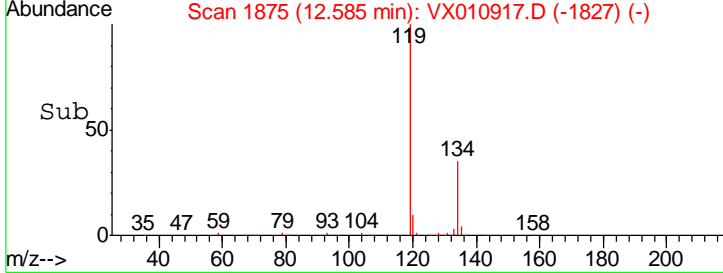
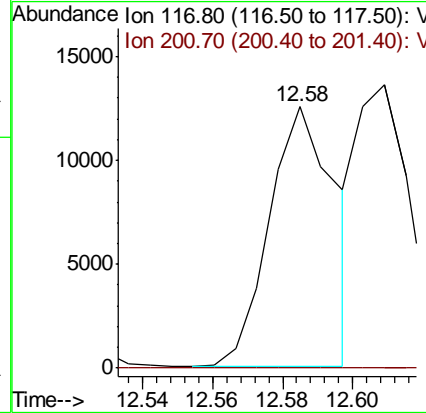
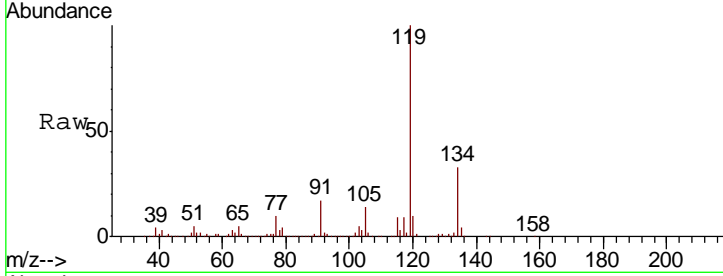




#90
 Hexachloroethane
 Concen: 9.278 ug/l
 RT: 12.58 min Scan# 1875
 Delta R.T. -0.01 min
 Lab File: VX010917.D
 Acq: 16 Jul 2019 19:25

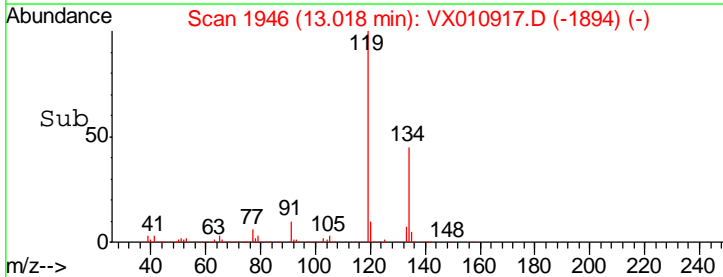
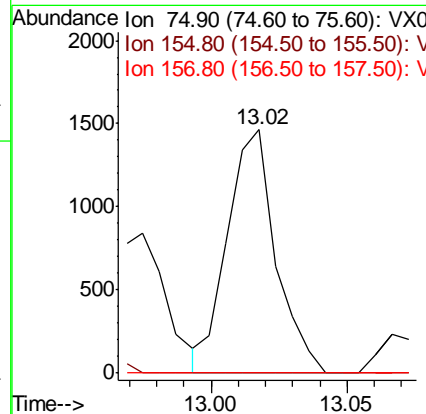
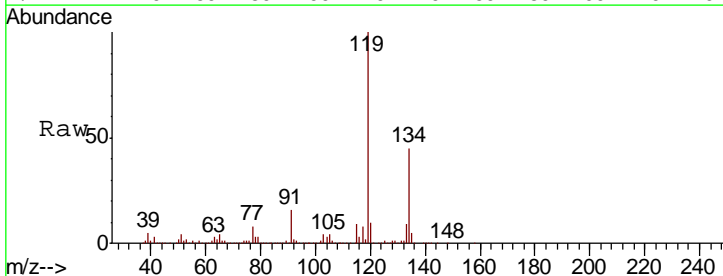
Instrument : MSVOA_X
 ClientSampled : FL-0611

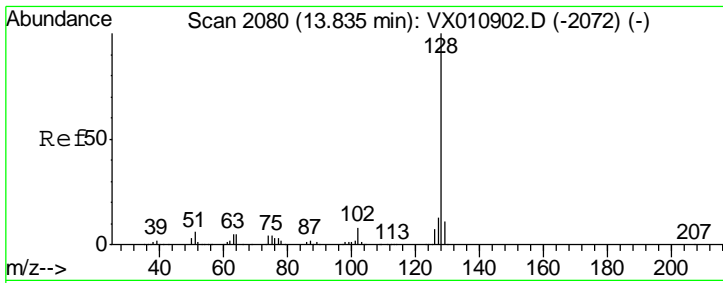
Tgt Ion	Resp	Lower	Upper
117	16430		
117	100		
201	0.0	43.3	129.8#



#92
 1,2-Dibromo-3-Chloropropane
 Concen: 2.087 ug/l
 RT: 13.02 min Scan# 1946
 Delta R.T. 0.02 min
 Lab File: VX010917.D
 Acq: 16 Jul 2019 19:25

Tgt Ion	Resp	Lower	Upper
75	1803		
75	100		
155	0.0	48.7	146.1#
157	0.0	62.5	187.6#





#95
 Naphthalene
 Concen: 158.920 ug/l
 RT: 13.83 min Scan# 2080
 Delta R.T. 0.00 min
 Lab File: VX010917.D
 Acq: 16 Jul 2019 19:25

Instrument : MSVOA_X
 ClientSampled : FL-0611

Tot Ion:128 Resp: 1905246

Ion	Ratio	Lower	Upper
128	100		
127	13.1	10.4	15.6
129	11.0	8.9	13.3

