

Data Path : Z:\VOASRV\HPCHEM1\MSVOA X\DATA\VX071819\
 Data File : VX010957.D
 Acq On : 18 Jul 2019 14:36
 Operator : JC/SP
 Sample : K3857-01
 Misc : 5.0mL/MSVOA X/WATER
 ALS Vial : 12 Sample Multiplier: 1

Instrument :
 MSVOA_X
 ClientSampleId :
 36916

Quant Time: Jul 19 02:09:55 2019
 Quant Method : Z:\VOASRV\HPCHEM1\MSVOA_X\METHOD\82X071619W.M
 Quant Title : SW846 8260
 QLast Update : Wed Jul 17 06:57:45 2019
 Response via : Initial Calibration

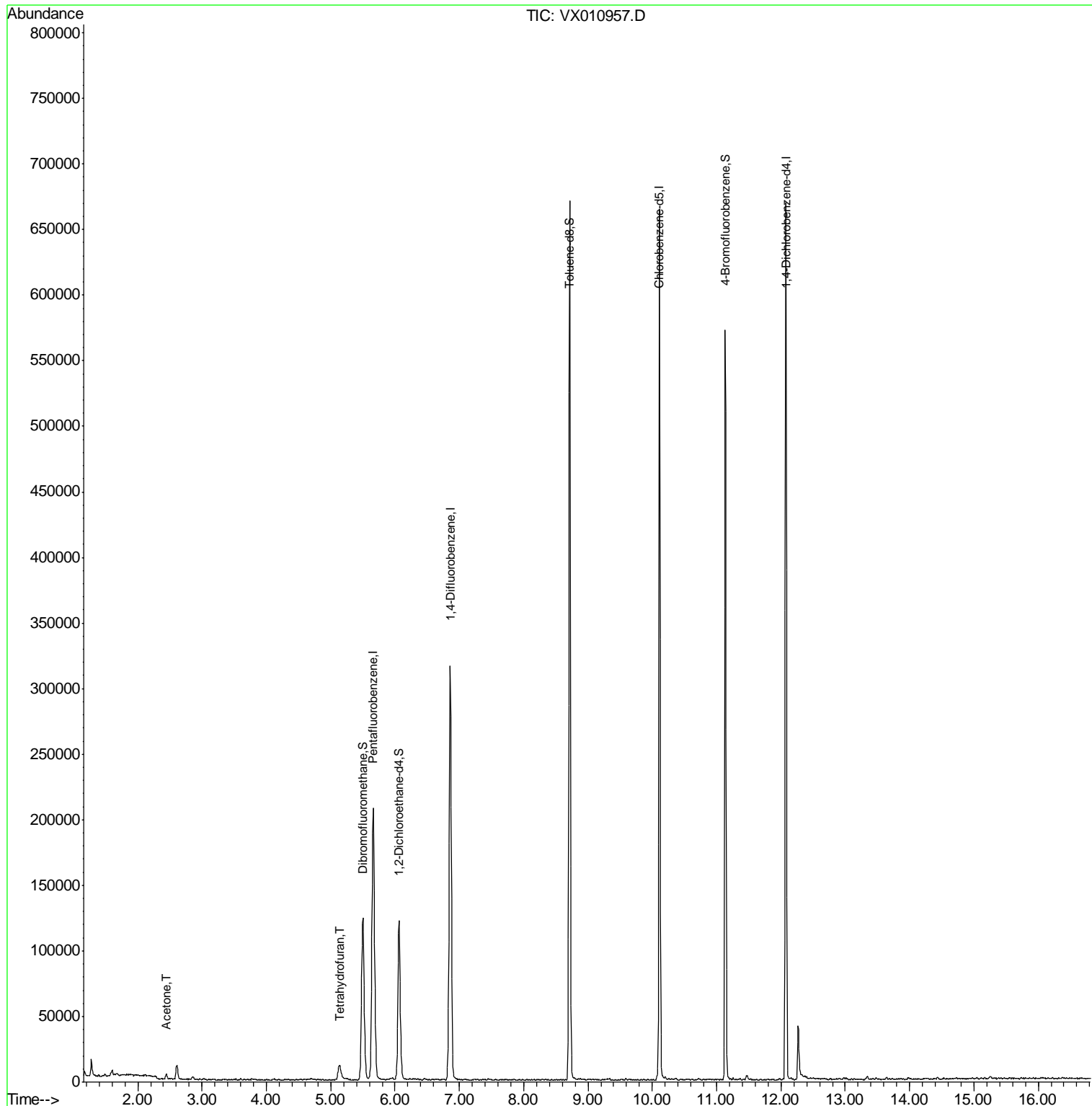
Internal Standards	R.T.	QIon	Response	Conc	Units	Dev(Min)
1) Pentafluorobenzene	5.67	168	210876	50.00	ug/l	0.00
34) 1,4-Difluorobenzene	6.86	114	336667	50.00	ug/l	0.00
63) Chlorobenzene-d5	10.11	117	311530	50.00	ug/l	0.00
72) 1,4-Dichlorobenzene-d4	12.08	152	147200	50.00	ug/l	0.00
System Monitoring Compounds						
33) 1,2-Dichloroethane-d4	6.06	65	112378	50.09	ug/l	0.00
Spiked Amount	50.000		Recovery	=	100.18%	
35) Dibromofluoromethane	5.50	113	102430	47.93	ug/l	0.00
Spiked Amount	50.000		Recovery	=	95.86%	
50) Toluene-d8	8.71	98	402237	50.19	ug/l	0.00
Spiked Amount	50.000		Recovery	=	100.38%	
62) 4-Bromofluorobenzene	11.13	95	140216	47.60	ug/l	0.00
Spiked Amount	50.000		Recovery	=	95.20%	
Target Compounds						
16) Acetone	2.45	43	4633	4.573	ug/l	93
29) Tetrahydrofuran	5.13	42	12155	13.193	ug/l	95

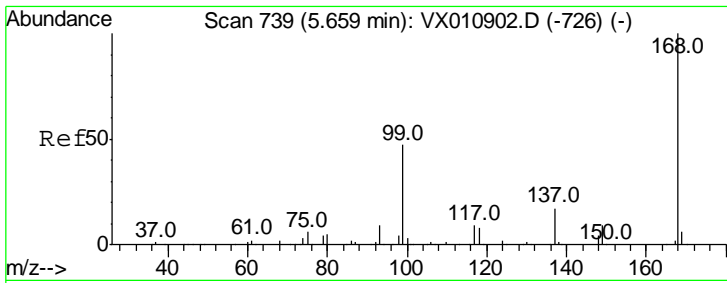
(#) = qualifier out of range (m) = manual integration (+) = signals summed

Data Path : Z:\VOASRV\HPCHEM1\MSVOA X\DATA\VX071819\
 Data File : VX010957.D
 Acq On : 18 Jul 2019 14:36
 Operator : JC/SP
 Sample : K3857-01
 Misc : 5.0mL/MSVOA X/WATER
 ALS Vial : 12 Sample Multiplier: 1

Instrument :
 MSVOA_X
 Client Sampled :
 36916

Quant Time: Jul 19 02:09:55 2019
 Quant Method : Z:\VOASRV\HPCHEM1\MSVOA_X\METHOD\82X071619W.M
 Quant Title : SW846 8260
 QLast Update : Wed Jul 17 06:57:45 2019
 Response via : Initial Calibration

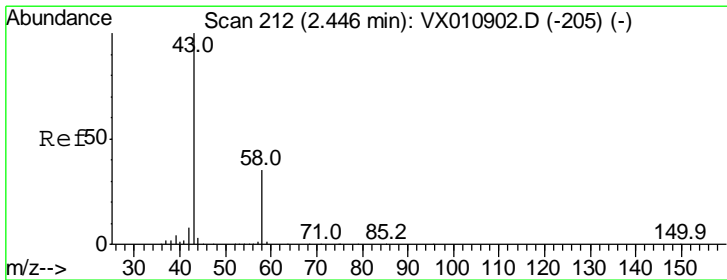
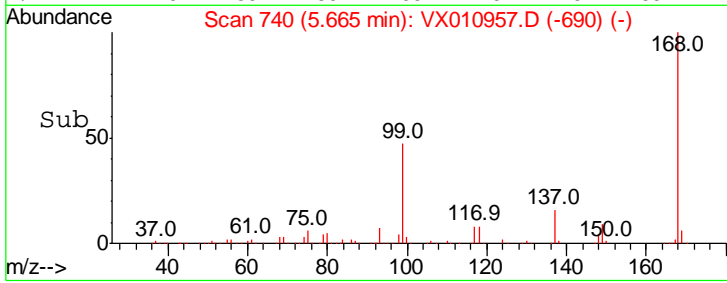
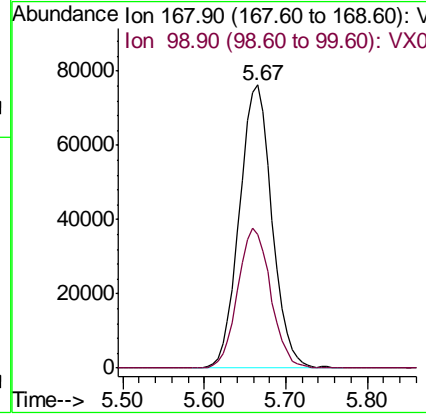
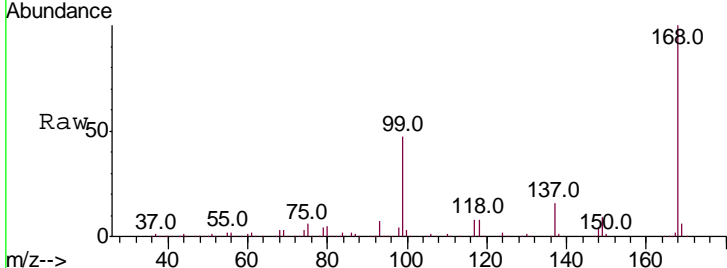




#1
 Pentafluorobenzene
 Concen: 50.000 ug/l
 RT: 5.67 min Scan# 740
 Delta R.T. 0.01 min
 Lab File: VX010957.D
 Acq: 18 Jul 2019 14:36

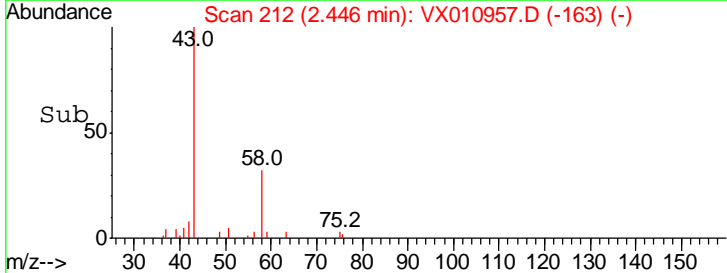
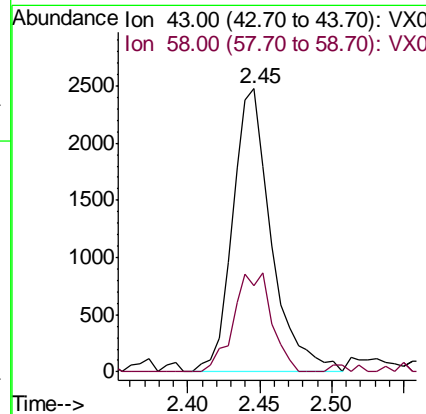
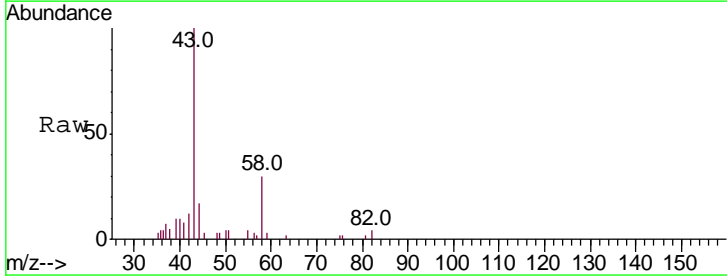
Instrument :
 MSVOA_X
 ClientSampleID :
 36916

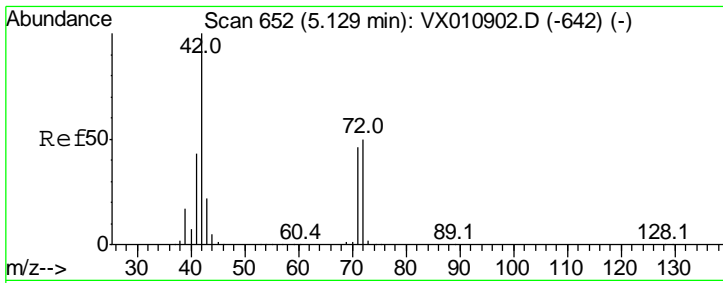
Tgt Ion: 168 Resp: 210876
 Ion Ratio Lower Upper
 168 100
 99 47.2 37.6 56.4



#16
 Acetone
 Concen: 4.573 ug/l
 RT: 2.45 min Scan# 212
 Delta R.T. -0.00 min
 Lab File: VX010957.D
 Acq: 18 Jul 2019 14:36

Tgt Ion: 43 Resp: 4633
 Ion Ratio Lower Upper
 43 100
 58 30.4 27.7 41.5

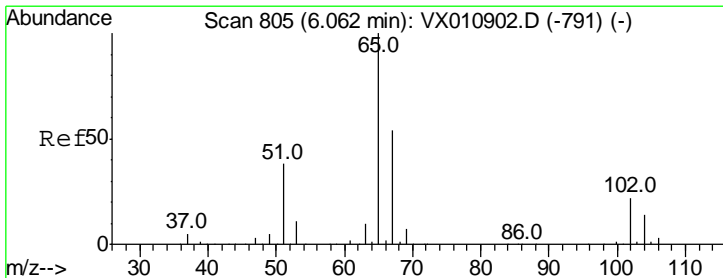
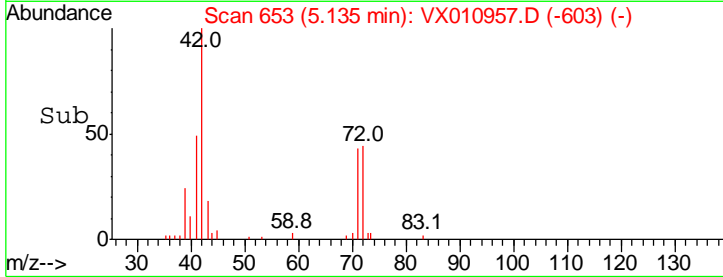
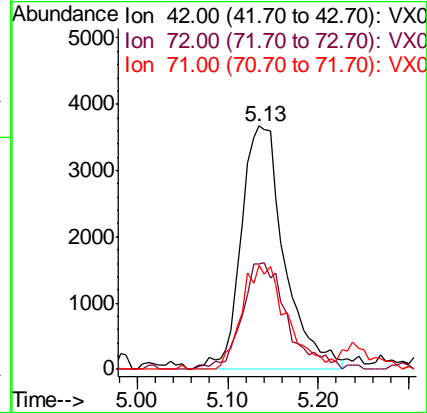
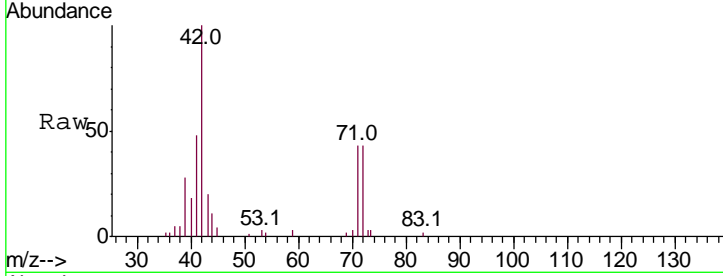




#29
 Tetrahydrofuran
 Concen: 13.193 ug/l
 RT: 5.13 min Scan# 653
 Delta R.T. 0.01 min
 Lab File: VX010957.D
 Acq: 18 Jul 2019 14:36

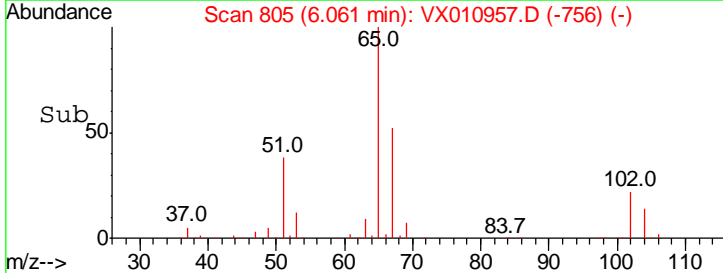
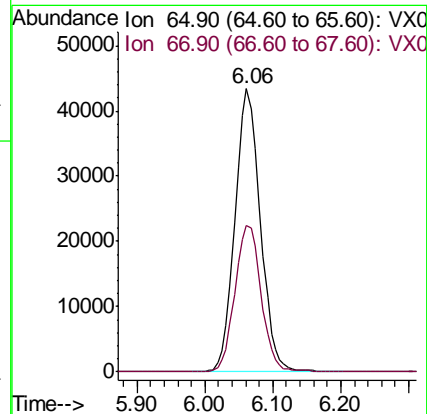
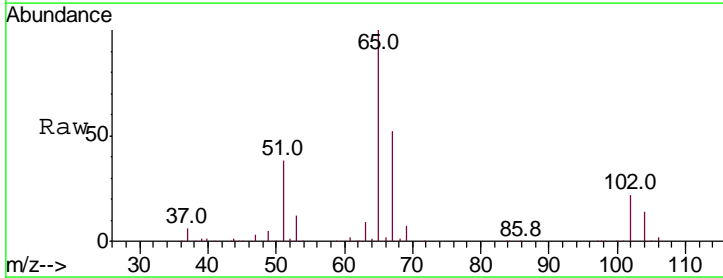
Instrument :
 MSVOA_X
 ClientSampled :
 36916

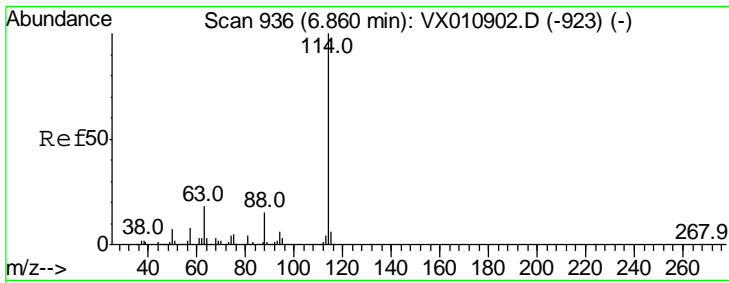
Tgt Ion	Resp	Lower	Upper
42	12155		
Ion Ratio			
42	100		
72	45.5	39.8	59.8
71	44.0	37.0	55.4



#33
 1,2-Dichloroethane-d4
 Concen: 50.093 ug/l
 RT: 6.06 min Scan# 805
 Delta R.T. -0.00 min
 Lab File: VX010957.D
 Acq: 18 Jul 2019 14:36

Tgt Ion	Resp	Lower	Upper
65	112378		
Ion Ratio			
65	100		
67	53.6	0.0	107.8

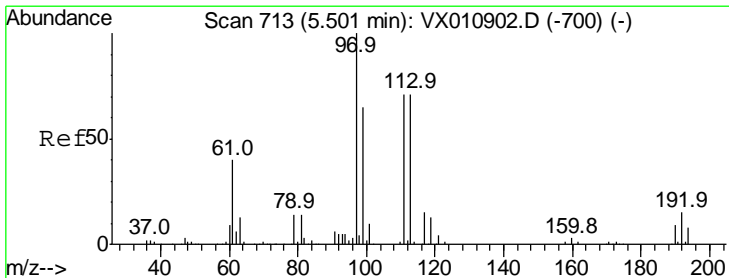
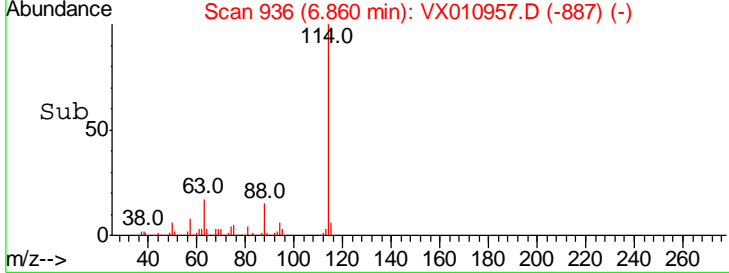
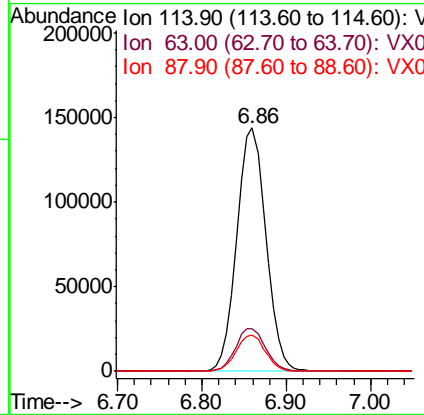
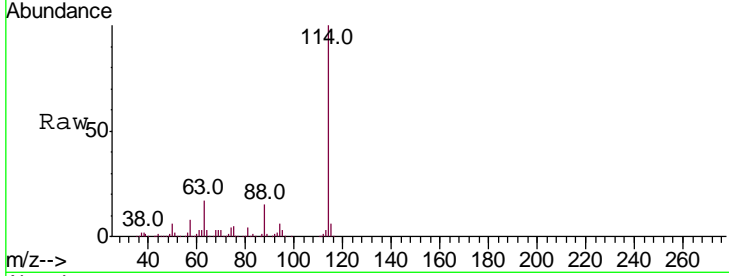




#34
 1,4-Difluorobenzene
 Concen: 50.000 ug/l
 RT: 6.86 min Scan# 936
 Delta R.T. -0.00 min
 Lab File: VX010957.D
 Acq: 18 Jul 2019 14:36

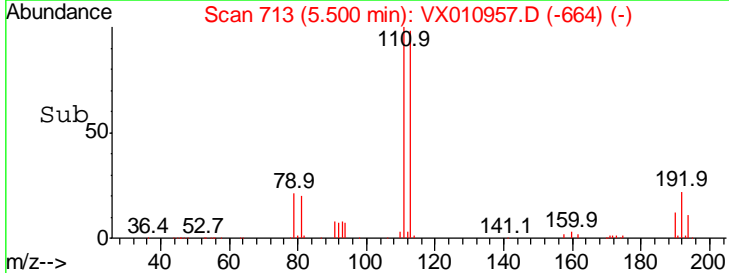
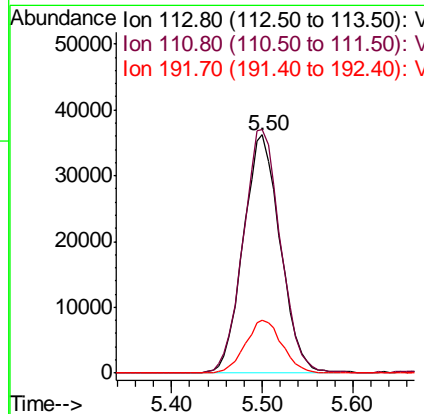
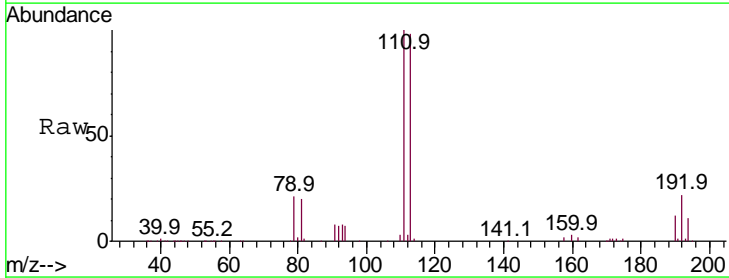
Instrument :
 MSVOA_X
 ClientSampled :
 36916

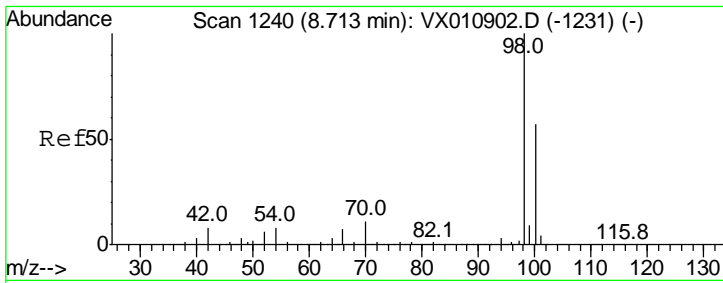
Tgt Ion	Resp	Lower	Upper
114	100		
63	17.2	0.0	35.6
88	14.8	0.0	29.8



#35
 Dibromofluoromethane
 Concen: 47.934 ug/l
 RT: 5.50 min Scan# 713
 Delta R.T. -0.00 min
 Lab File: VX010957.D
 Acq: 18 Jul 2019 14:36

Tgt Ion	Resp	Lower	Upper
113	100		
111	103.2	82.3	123.5
192	22.1	17.4	26.2

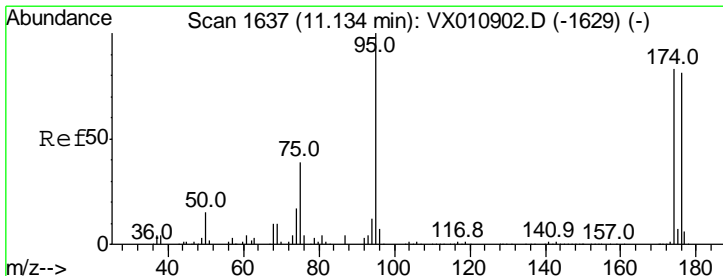
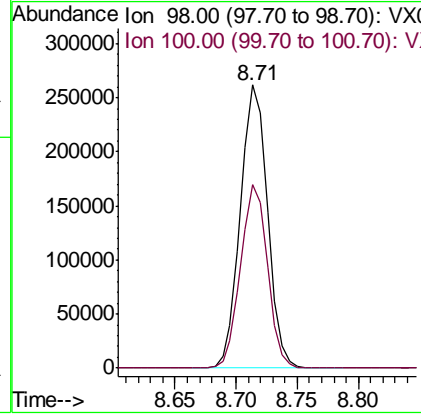
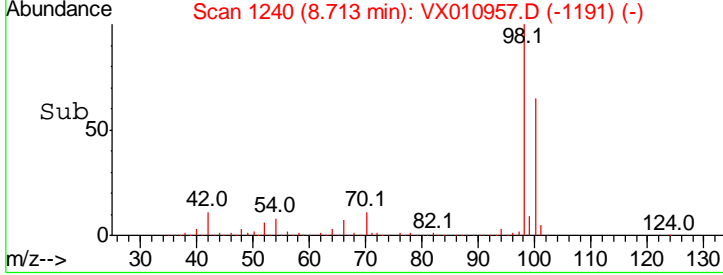
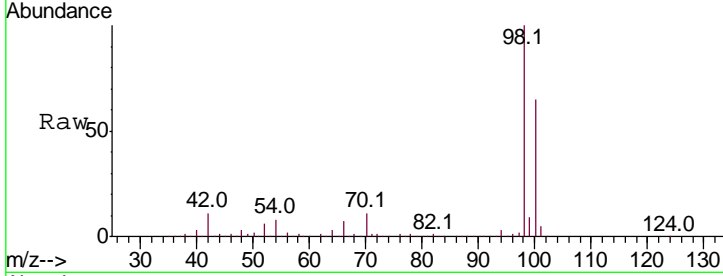




#50
 Toluene-d8
 Concen: 50.187 ug/l
 RT: 8.71 min Scan# 1240
 Delta R.T. -0.00 min
 Lab File: VX010957.D
 Acq: 18 Jul 2019 14:36

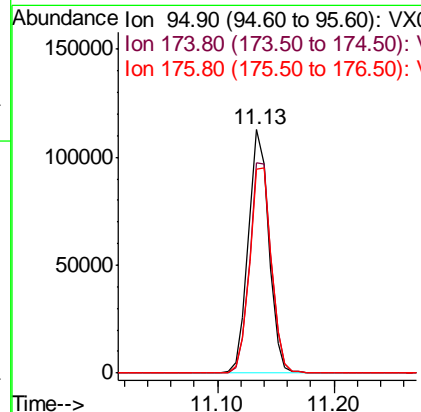
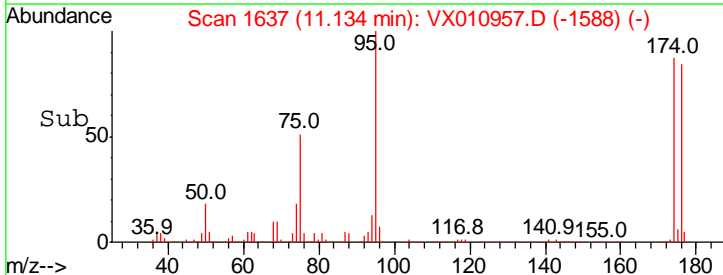
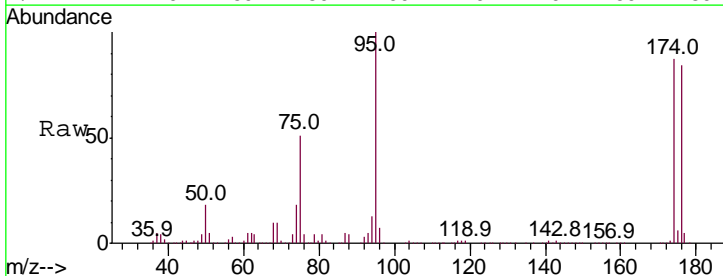
Instrument : MSVOA_X
 ClientSampled : 36916

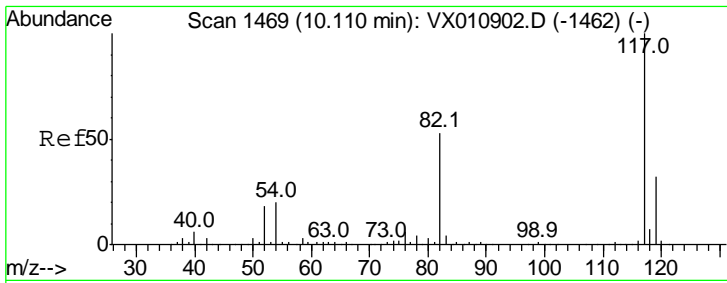
Tgt Ion	Resp	Lower	Upper
98	402237		
98	100		
100	64.3	50.6	75.8



#62
 4-Bromofluorobenzene
 Concen: 47.596 ug/l
 RT: 11.13 min Scan# 1637
 Delta R.T. -0.00 min
 Lab File: VX010957.D
 Acq: 18 Jul 2019 14:36

Tgt Ion	Resp	Lower	Upper
95	140216		
95	100		
174	90.8	0.0	180.6
176	89.4	0.0	173.8

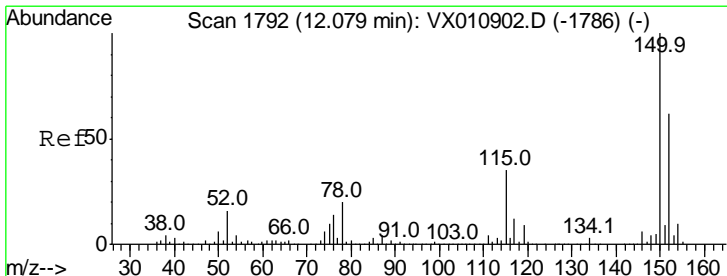
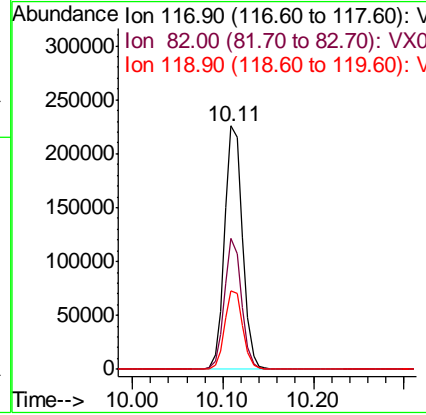
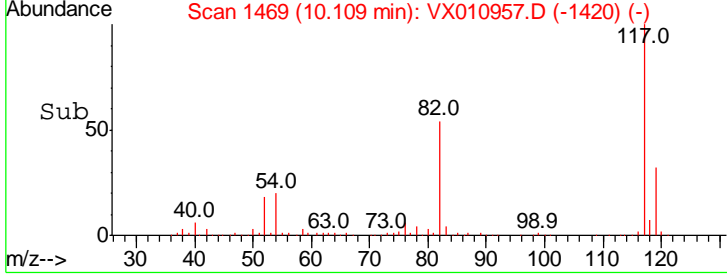
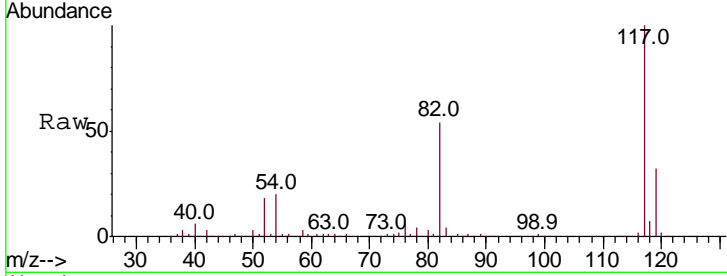




#63
 Chlorobenzene-d5
 Concen: 50.000 ug/l
 RT: 10.11 min Scan# 1469
 Delta R.T. -0.00 min
 Lab File: VX010957.D
 Acq: 18 Jul 2019 14:36

Instrument : MSVOA_X
 ClientSampled : 36916

Tgt Ion	Resp	Lower	Upper
117	311530		
82	53.7	42.6	63.8
119	32.0	25.9	38.9



#72
 1,4-Dichlorobenzene-d4
 Concen: 50.000 ug/l
 RT: 12.08 min Scan# 1792
 Delta R.T. -0.00 min
 Lab File: VX010957.D
 Acq: 18 Jul 2019 14:36

Tgt Ion	Resp	Lower	Upper
152	147200		
115	55.3	39.7	119.1
150	156.1	0.0	345.6

