

Data Path : Z:\VOASRV\HPCHEM1\MSVOA X\DATA\VX071819\
 Data File : VX010966.D
 Acq On : 18 Jul 2019 18:05
 Operator : JC/SP
 Sample : K3884-06
 Misc : 5.0mL/MSVOA X/WATER
 ALS Vial : 21 Sample Multiplier: 1

Instrument :
 MSVOA_X
 ClientSampleId :
 FL-0608

Manual Integrations
 APPROVED

MMDadoda
 7/22/2019 12:23:15 PM

Quant Time: Jul 19 04:30:46 2019
 Quant Method : Z:\VOASRV\HPCHEM1\MSVOA_X\METHOD\82X071619W.M
 Quant Title : SW846 8260
 QLast Update : Wed Jul 17 06:57:45 2019
 Response via : Initial Calibration

Internal Standards	R.T.	QIon	Response	Conc	Units	Dev(Min)
1) Pentafluorobenzene	5.67	168	230341	50.00	ug/l	0.00
34) 1,4-Difluorobenzene	6.86	114	361626	50.00	ug/l	0.00
63) Chlorobenzene-d5	10.11	117	341176	50.00	ug/l	0.00
72) 1,4-Dichlorobenzene-d4	12.08	152	185726	50.00	ug/l	0.00

System Monitoring Compounds

33) 1,2-Dichloroethane-d4	6.06	65	127094	51.86	ug/l	0.00
Spiked Amount	50.000		Recovery	=	103.72%	
35) Dibromofluoromethane	5.50	113	110761	48.26	ug/l	0.00
Spiked Amount	50.000		Recovery	=	96.52%	
50) Toluene-d8	8.71	98	444296	51.61	ug/l	0.00
Spiked Amount	50.000		Recovery	=	103.22%	
62) 4-Bromofluorobenzene	11.13	95	173834	54.93	ug/l	0.00
Spiked Amount	50.000		Recovery	=	109.86%	

Target Compounds

	R.T.	QIon	Response	Conc	Units	Qvalue
31) Cyclohexane	5.59	56	1688273	507.419	ug/l	98
39) Methylcyclohexane	7.46	83	905074	234.958	ug/l	97
67) Ethyl Benzene	10.26	91	7226588	605.872	ug/l	95
68) m/p-Xylenes	10.37	106	6289495	1374.659	ug/l	90
69) o-Xylene	10.70	106	2072905	464.227	ug/l	100
73) Isopropylbenzene	11.02	105	553602	44.114	ug/l	100
78) n-propylbenzene	11.36	91	837608	60.407	ug/l	99
80) 1,3,5-Trimethylbenzene	11.51	105	1416585	135.088	ug/l	100
83) tert-Butylbenzene	11.77	119	38564	3.744	ug/l	90
84) 1,2,4-Trimethylbenzene	11.81	105	4365174	413.009	ug/l	99
85) sec-Butylbenzene	11.94	105	55656m	4.611	ug/l	
86) p-Isopropyltoluene	12.06	119	63663	5.706	ug/l	97
89) n-Butylbenzene	12.38	91	109146	11.434	ug/l #	30
95) Naphthalene	13.83	128	2533982	212.677	ug/l	100

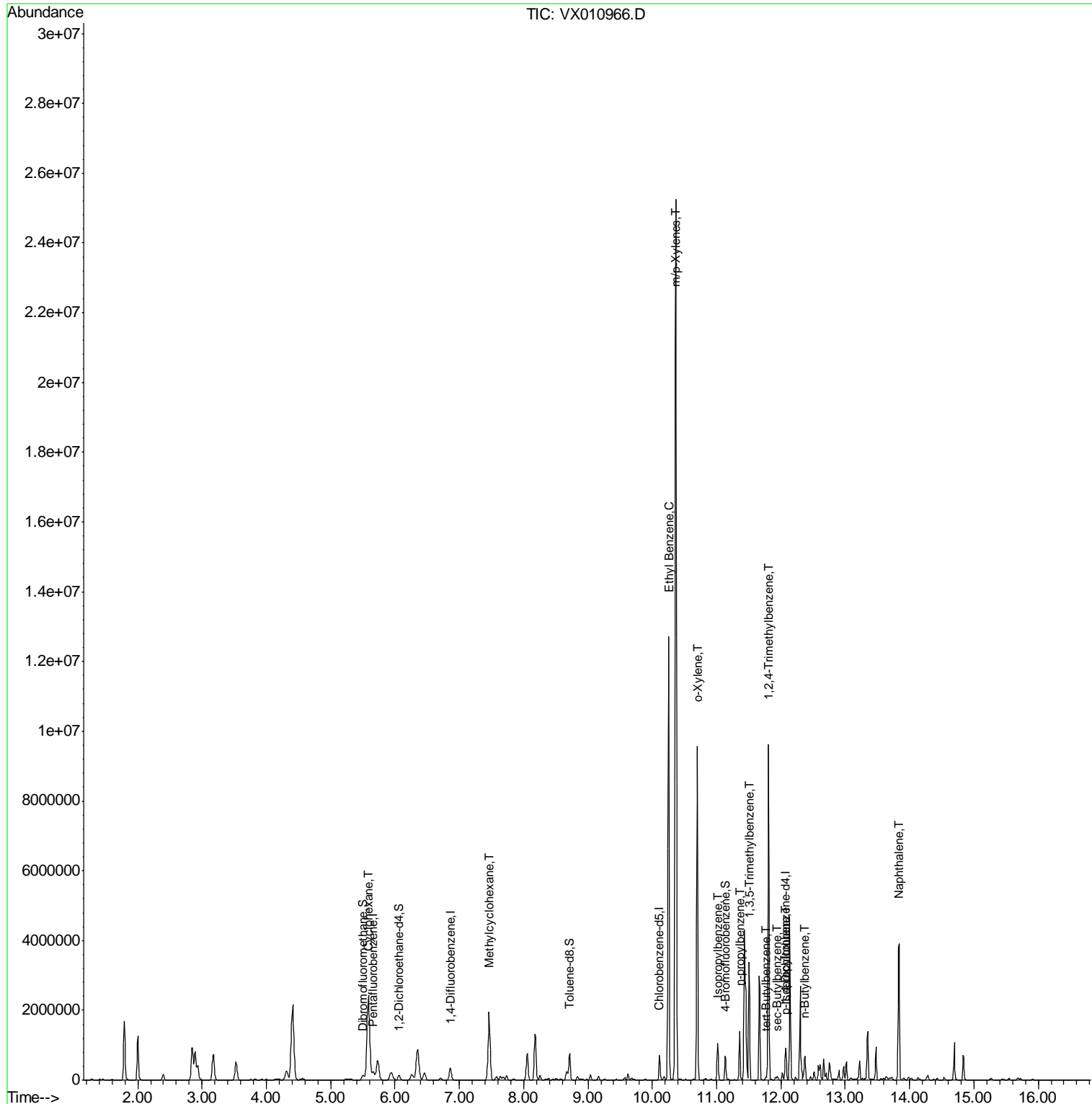
(#) = qualifier out of range (m) = manual integration (+) = signals summed

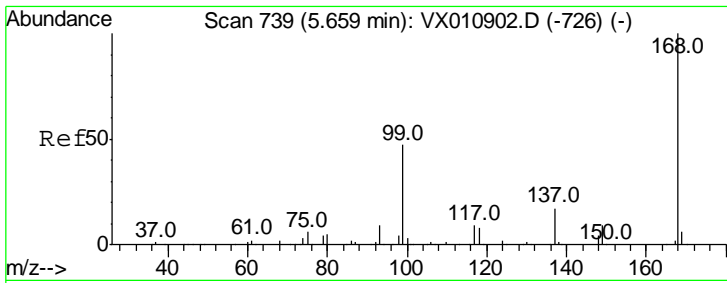
Data Path : Z:\VOASRV\HPCHEM1\MSVOA X\DATA\VX071819\
 Data File : VX010966.D
 Acq On : 18 Jul 2019 18:05
 Operator : JC/SP
 Sample : K3884-06
 Misc : 5.0mL/MSVOA X/WATER
 ALS Vial : 21 Sample Multiplier: 1

Instrument :
 MSVOA_X
Client Sampled :
 FL-0608

Manual Integrations
APPROVED
 MMDadoda
 7/22/2019 12:23:15 PM

Quant Time: Jul 19 04:30:46 2019
 Quant Method : Z:\VOASRV\HPCHEM1\MSVOA_X\METHOD\82X071619W.M
 Quant Title : SW846 8260
 QLast Update : Wed Jul 17 06:57:45 2019
 Response via : Initial Calibration





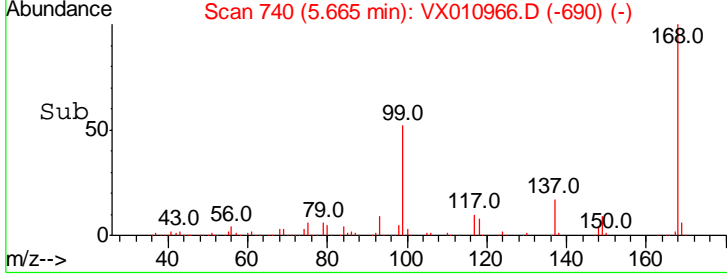
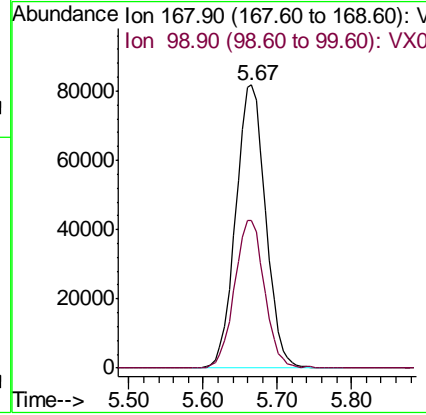
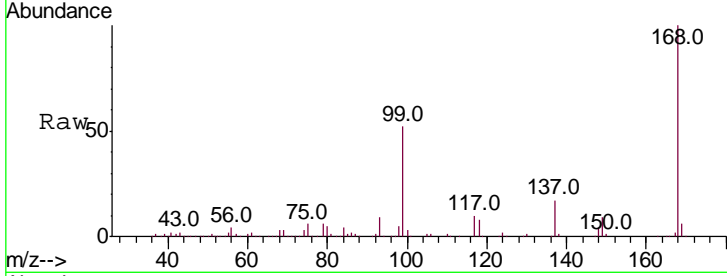
#1
 Pentafluorobenzene
 Concen: 50.000 ug/l
 RT: 5.67 min Scan# 740
 Delta R.T. 0.01 min
 Lab File: VX010966.D
 Acq: 18 Jul 2019 18:05

Instrument : MSVOA_X
 Client Sampled : FL-0608

Tgt Ion: 168 Resp: 230341
 Ion Ratio Lower Upper
 168 100
 99 52.3 37.6 56.4

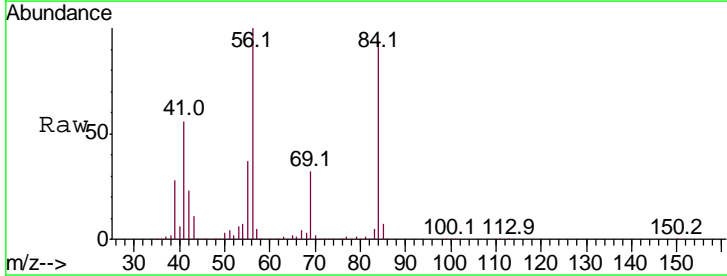
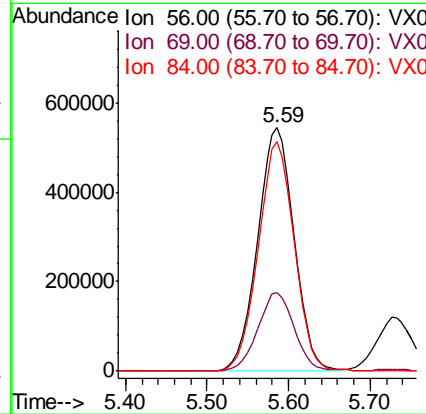
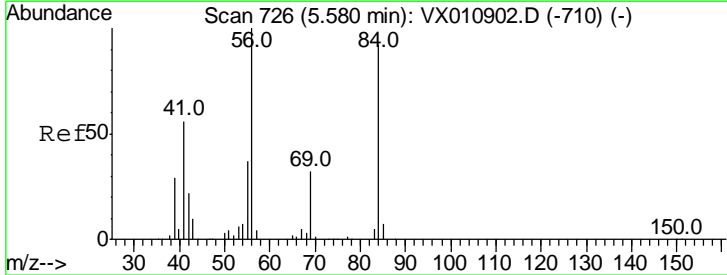
Manual Integrations
 APPROVED

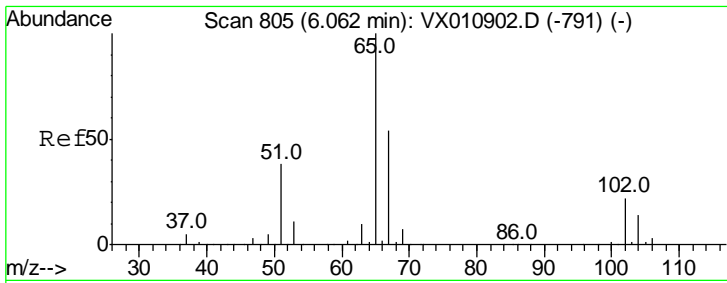
MMDadoda
 7/22/2019 12:23:15 PM



#31
 Cyclohexane
 Concen: 507.419 ug/l
 RT: 5.59 min Scan# 727
 Delta R.T. 0.01 min
 Lab File: VX010966.D
 Acq: 18 Jul 2019 18:05

Tgt Ion: 56 Resp: 1688273
 Ion Ratio Lower Upper
 56 100
 69 32.1 25.8 38.8
 84 94.3 73.8 110.6





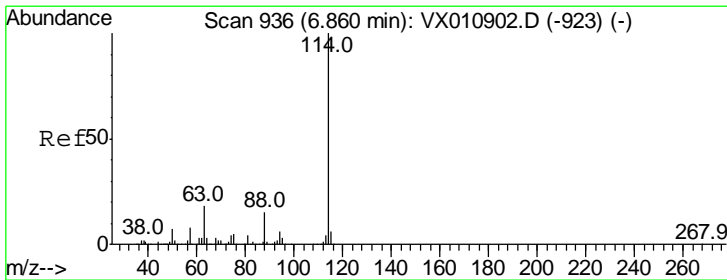
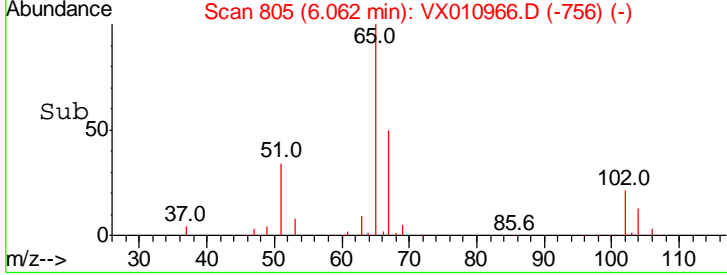
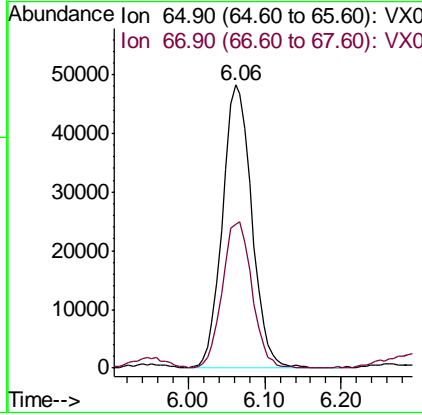
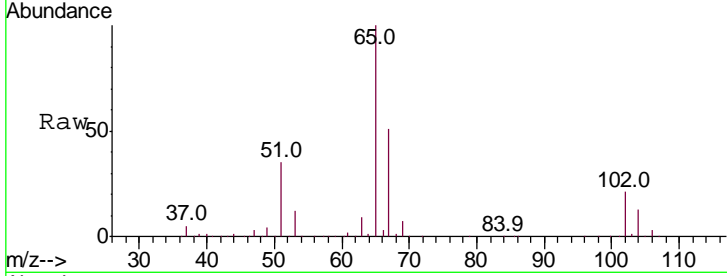
#33
 1,2-Dichloroethane-d4
 Concen: 51.865 ug/l
 RT: 6.06 min Scan# 805
 Delta R.T. 0.00 min
 Lab File: VX010966.D
 Acq: 18 Jul 2019 18:05

Instrument :
 MSVOA_X
 ClientSampled :
 FL-0608

Tgt Ion	Resp	Lower	Upper
65	127094		
65	100		
67	52.3	0.0	107.8

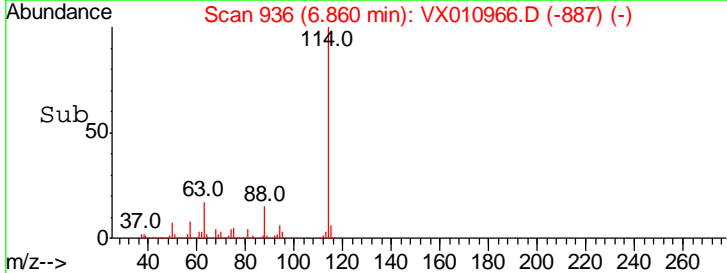
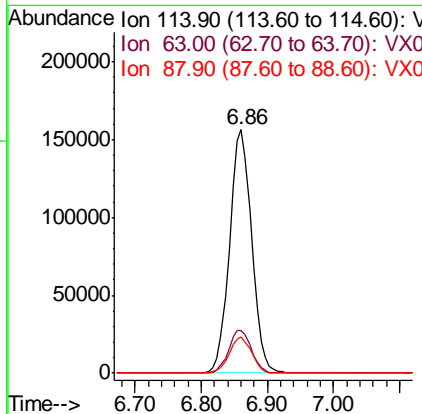
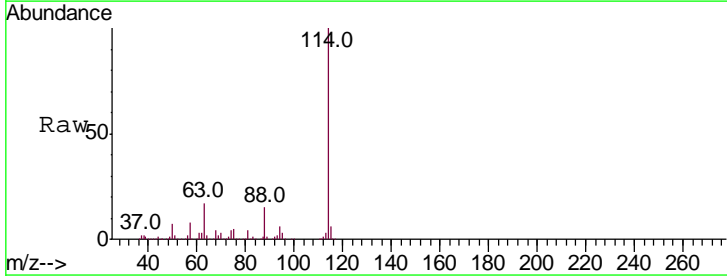
Manual Integrations
 APPROVED

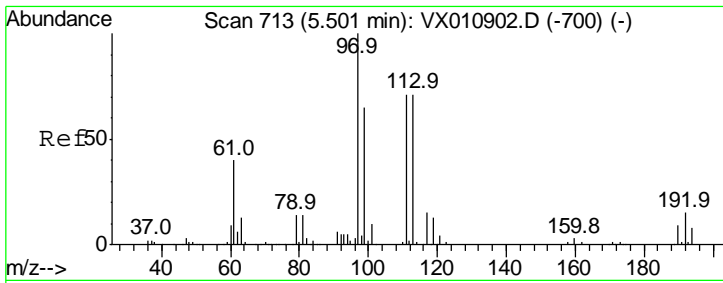
MMDadoda
 7/22/2019 12:23:15 PM



#34
 1,4-Difluorobenzene
 Concen: 50.000 ug/l
 RT: 6.86 min Scan# 936
 Delta R.T. 0.00 min
 Lab File: VX010966.D
 Acq: 18 Jul 2019 18:05

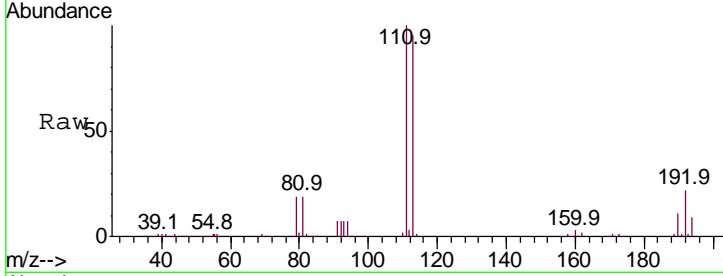
Tgt Ion	Resp	Lower	Upper
114	361626		
114	100		
63	17.4	0.0	35.6
88	14.8	0.0	29.8





#35
 Dibromofluoromethane
 Concen: 48.255 ug/l
 RT: 5.50 min Scan# 713
 Delta R.T. 0.00 min
 Lab File: VX010966.D
 Acq: 18 Jul 2019 18:05

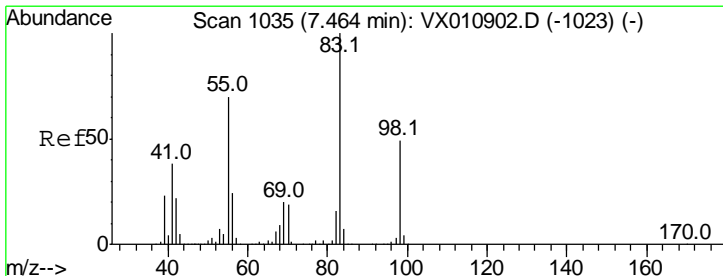
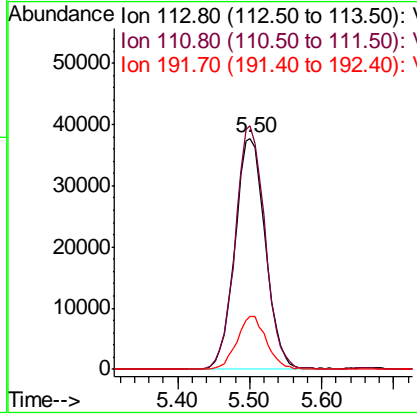
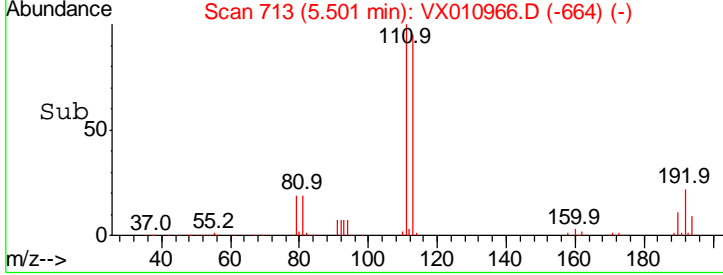
Instrument :
 MSVOA_X
ClientSampled :
 FL-0608



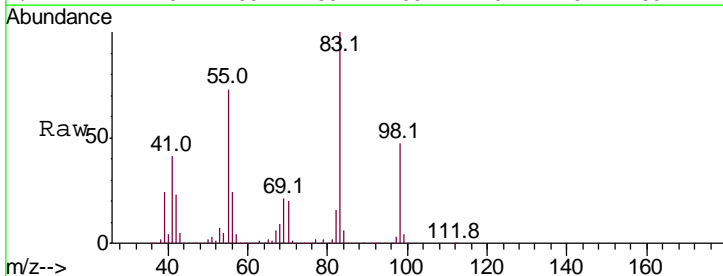
Tgt Ion: 113 Resp: 110761

Ion	Ratio	Lower	Upper
113	100		
111	103.2	82.3	123.5
192	22.2	17.4	26.2

Manual Integrations
APPROVED
 MMDadoda
 7/22/2019 12:23:15 PM

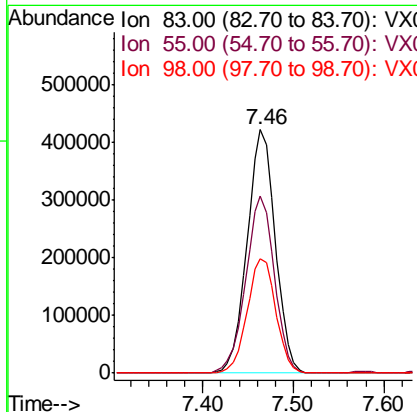
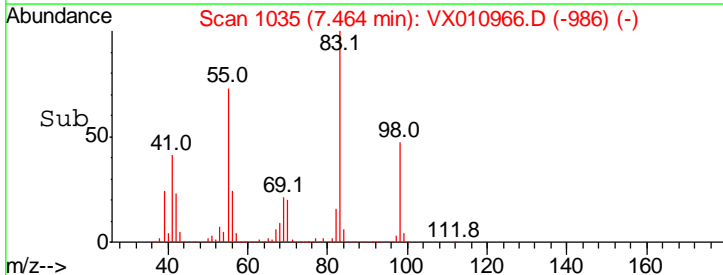


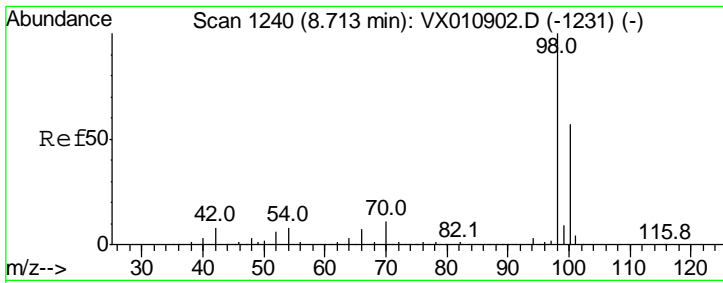
#39
 Methylcyclohexane
 Concen: 234.958 ug/l
 RT: 7.46 min Scan# 1035
 Delta R.T. 0.00 min
 Lab File: VX010966.D
 Acq: 18 Jul 2019 18:05



Tgt Ion: 83 Resp: 905074

Ion	Ratio	Lower	Upper
83	100		
55	72.7	56.2	84.4
98	47.2	39.0	58.4



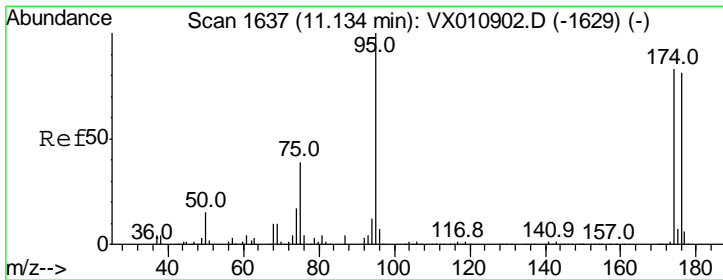
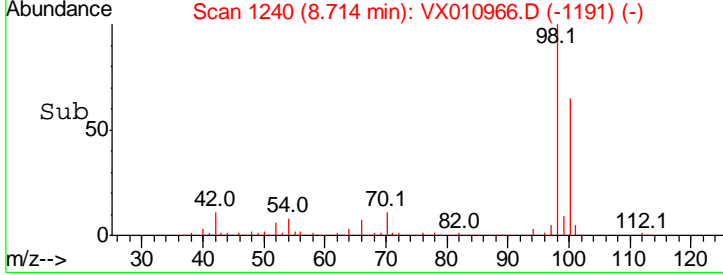
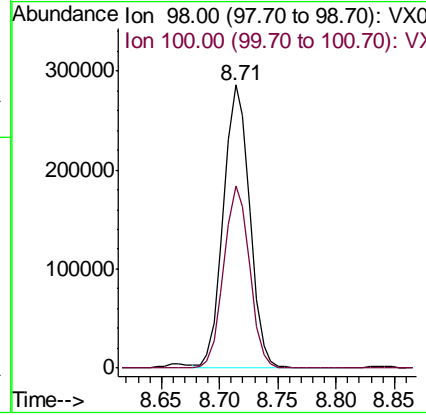
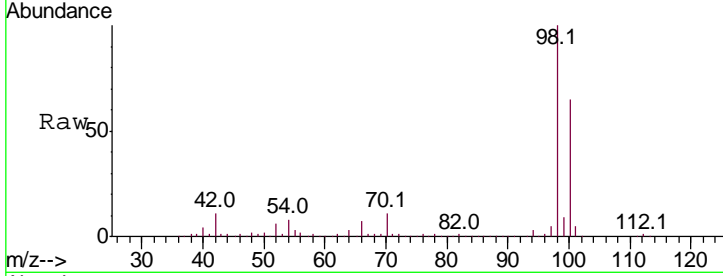


#50
 Toluene-d8
 Concen: 51.609 ug/l
 RT: 8.71 min Scan# 1240
 Delta R.T. 0.00 min
 Lab File: VX010966.D
 Acq: 18 Jul 2019 18:05

Instrument :
 MSVOA_X
 ClientSampled :
 FL-0608

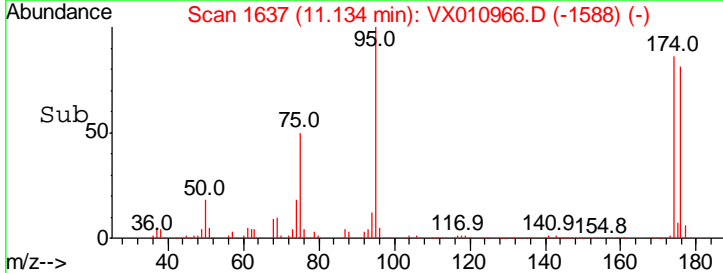
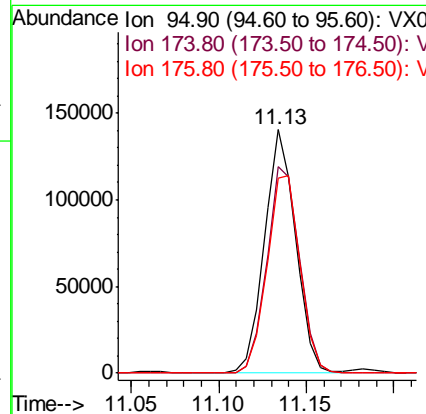
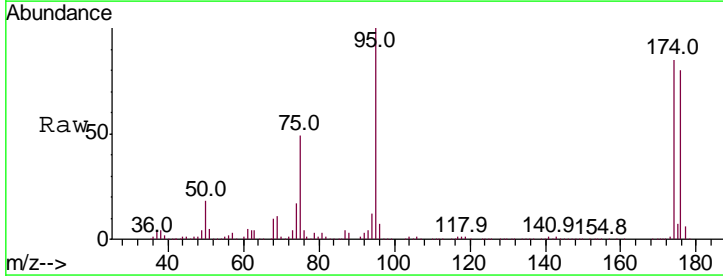
Tgt Ion: 98 Resp: 444296
 Ion Ratio Lower Upper
 98 100
 100 63.8 50.6 75.8

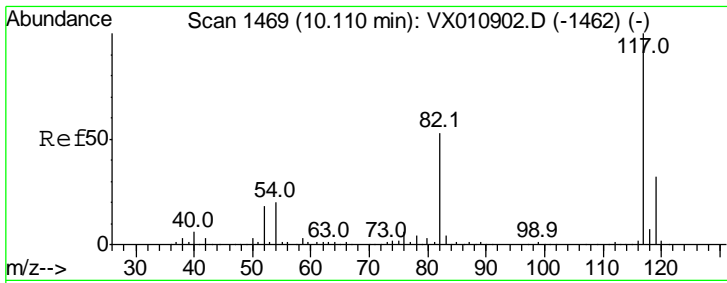
Manual Integrations
APPROVED
 MMDadoda
 7/22/2019 12:23:15 PM



#62
 4-Bromofluorobenzene
 Concen: 54.935 ug/l
 RT: 11.13 min Scan# 1637
 Delta R.T. 0.00 min
 Lab File: VX010966.D
 Acq: 18 Jul 2019 18:05

Tgt Ion: 95 Resp: 173834
 Ion Ratio Lower Upper
 95 100
 174 89.1 0.0 180.6
 176 86.3 0.0 173.8



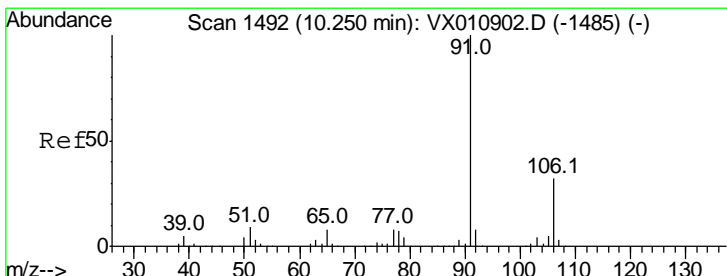
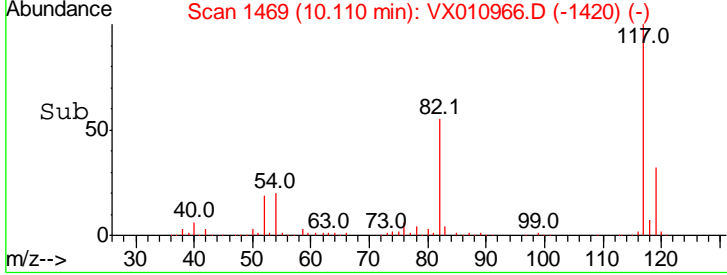
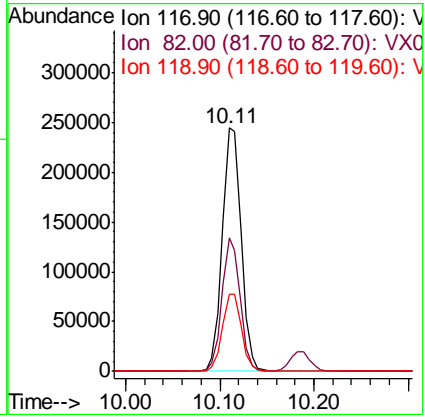
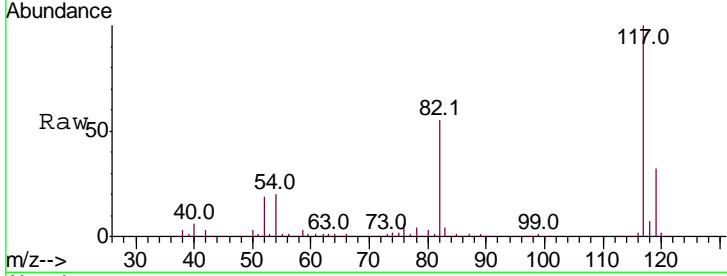


#63
 Chlorobenzene-d5
 Concen: 50.000 ug/l
 RT: 10.11 min Scan# 1469
 Delta R.T. 0.00 min
 Lab File: VX010966.D
 Acq: 18 Jul 2019 18:05

Instrument : MSVOA_X
 Client Sampled : FL-0608

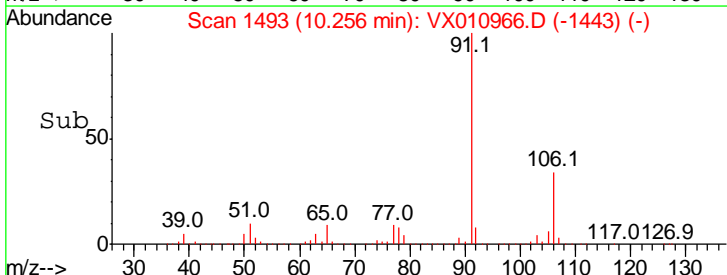
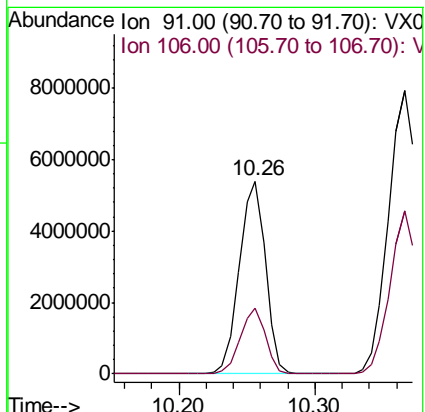
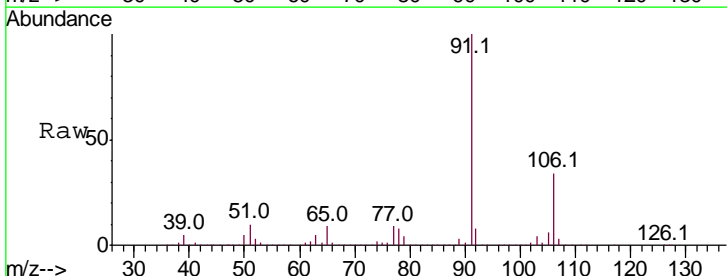
Tgt Ion	Resp	Lower	Upper
117	100		
82	54.9	42.6	63.8
119	31.8	25.9	38.9

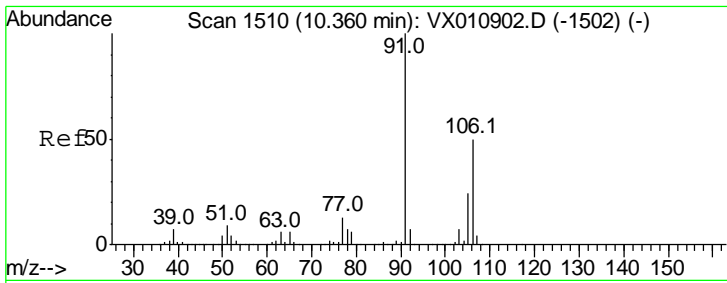
Manual Integrations
APPROVED
 MMDadoda
 7/22/2019 12:23:15 PM



#67
 Ethyl Benzene
 Concen: 605.872 ug/l
 RT: 10.26 min Scan# 1493
 Delta R.T. 0.01 min
 Lab File: VX010966.D
 Acq: 18 Jul 2019 18:05

Tgt Ion	Resp	Lower	Upper
91	100		
106	34.3	25.4	38.2



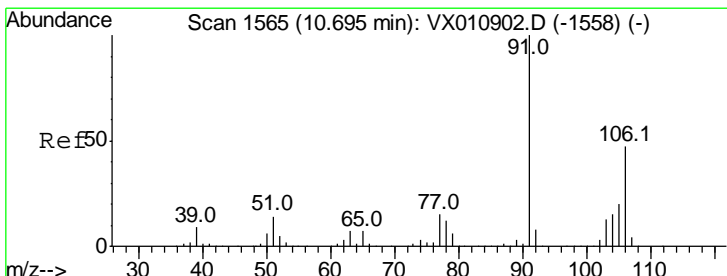
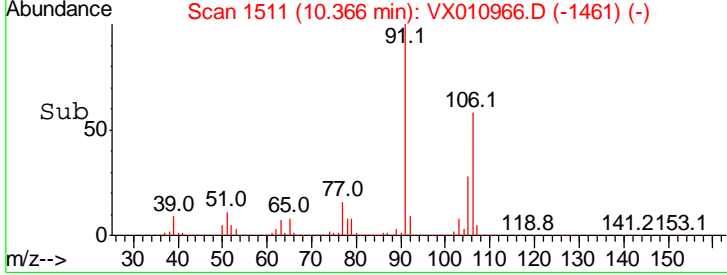
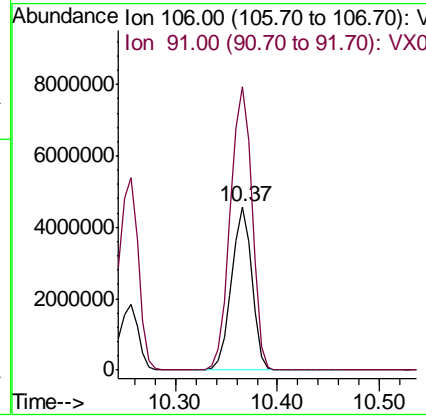
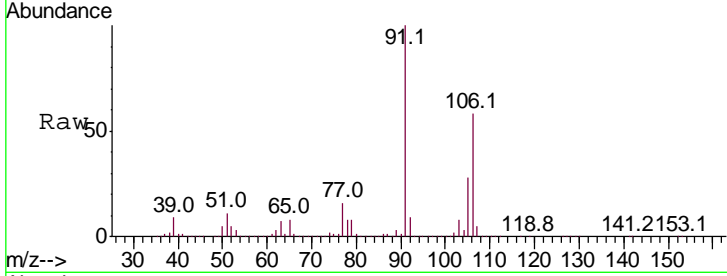


#68
 m/p-Xylenes
 Concen: 1374.659 ug/l
 RT: 10.37 min Scan# 1511
 Delta R.T. 0.01 min
 Lab File: VX010966.D
 Acq: 18 Jul 2019 18:05

Instrument : MSVOA_X
 ClientSampled : FL-0608

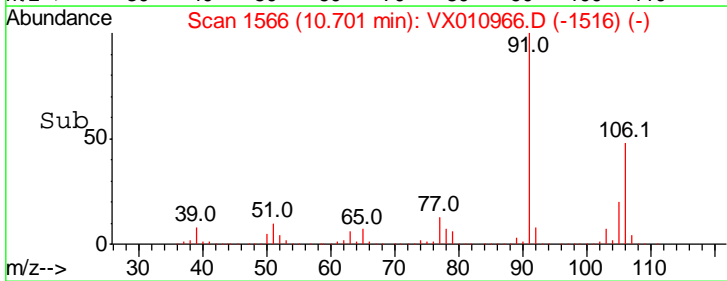
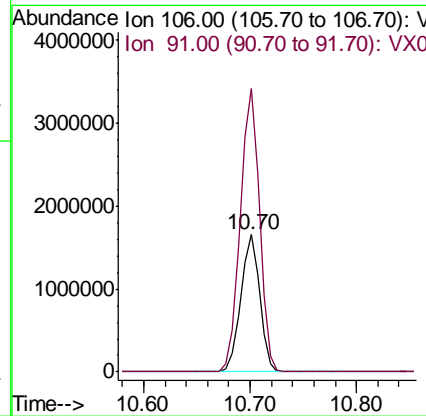
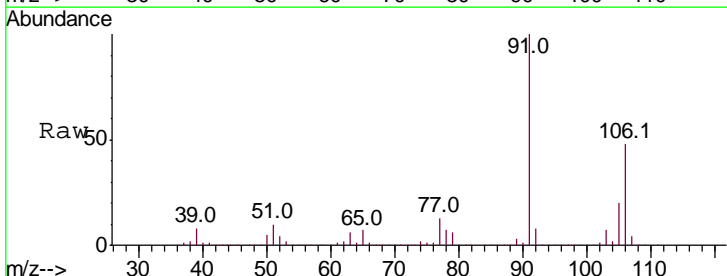
Tgt Ion	Resp	Lower	Upper
106	100		
91	185.6	160.1	240.1

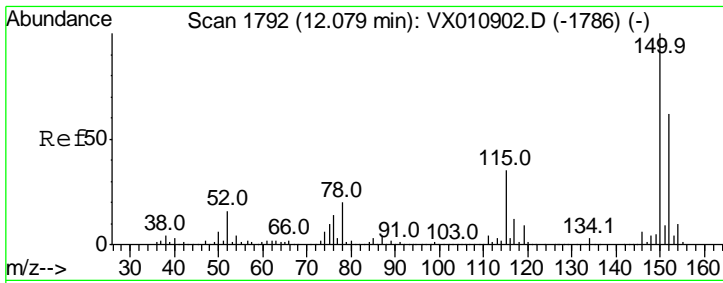
Manual Integrations
APPROVED
 MMDadoda
 7/22/2019 12:23:15 PM



#69
 o-Xylene
 Concen: 464.227 ug/l
 RT: 10.70 min Scan# 1566
 Delta R.T. 0.01 min
 Lab File: VX010966.D
 Acq: 18 Jul 2019 18:05

Tgt Ion	Resp	Lower	Upper
106	100		
91	210.4	105.1	315.3



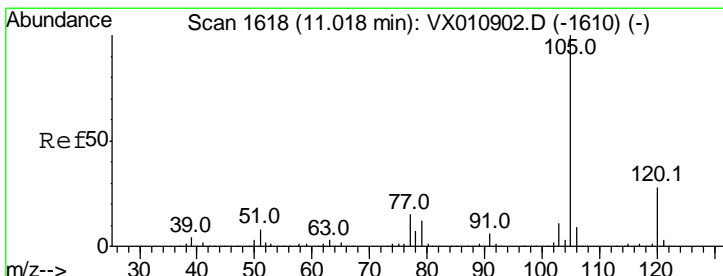
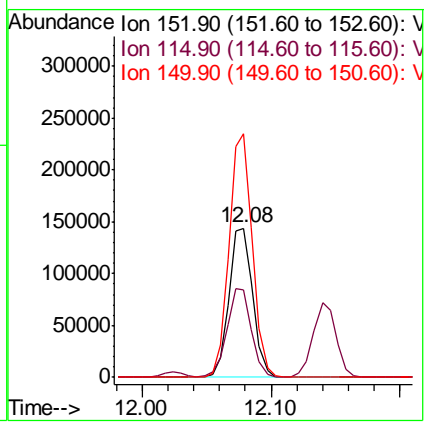
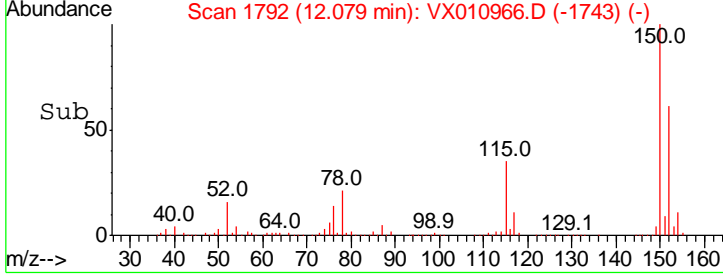
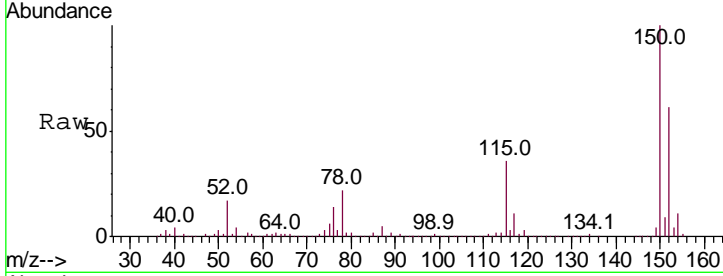


#72
 1,4-Dichlorobenzene-d4
 Concen: 50.000 ug/l
 RT: 12.08 min Scan# 1792
 Delta R.T. 0.00 min
 Lab File: VX010966.D
 Acq: 18 Jul 2019 18:05

Instrument : MSVOA_X
 ClientSampled : FL-0608

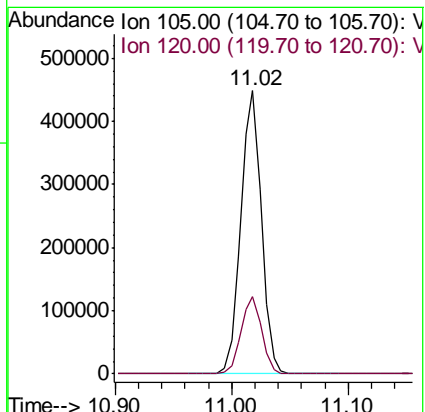
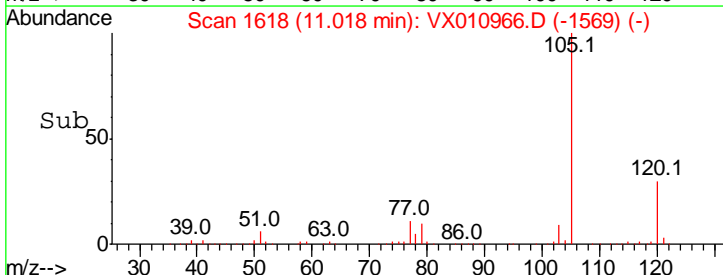
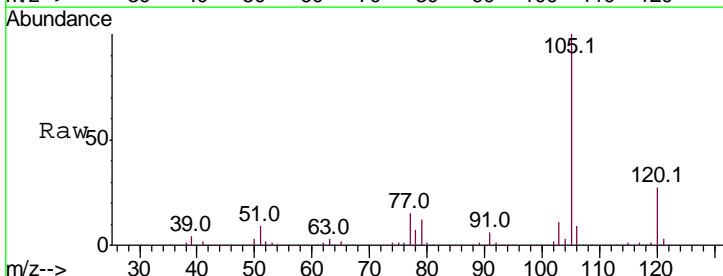
Tgt Ion	Resp	Lower	Upper
152	185726		
152	100		
115	59.9	39.7	119.1
150	159.5	0.0	345.6

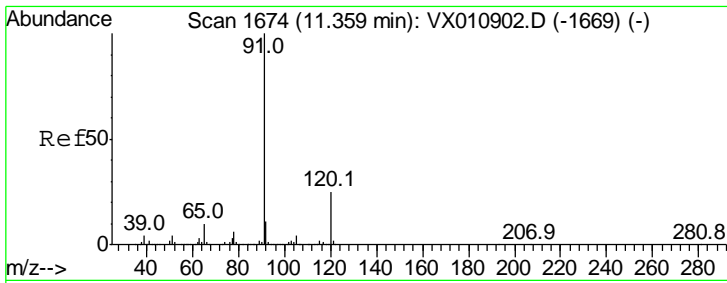
Manual Integrations
APPROVED
 MMDadoda
 7/22/2019 12:23:15 PM



#73
 Isopropylbenzene
 Concen: 44.114 ug/l
 RT: 11.02 min Scan# 1618
 Delta R.T. 0.00 min
 Lab File: VX010966.D
 Acq: 18 Jul 2019 18:05

Tgt Ion	Resp	Lower	Upper
105	553602		
105	100		
120	27.4	13.7	41.1



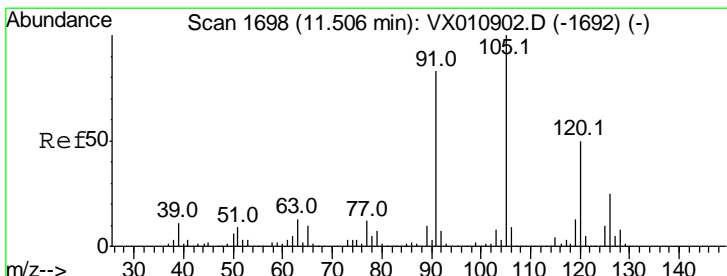
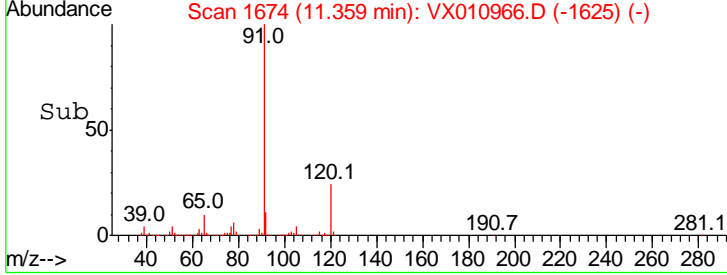
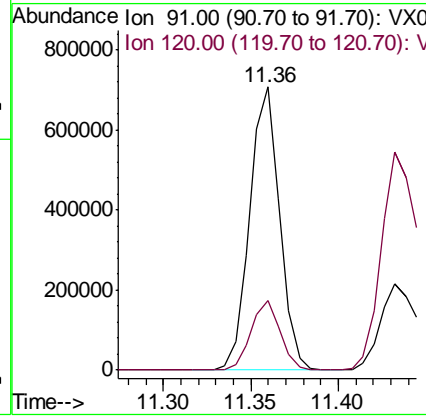
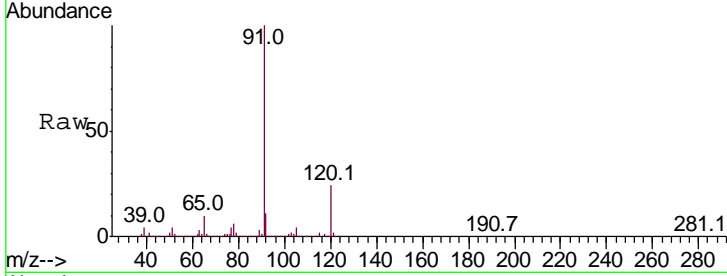


#78
 n-propylbenzene
 Concen: 60.407 ug/l
 RT: 11.36 min Scan# 1674
 Delta R.T. 0.00 min
 Lab File: VX010966.D
 Acq: 18 Jul 2019 18:05

Instrument : MSVOA_X
 ClientSampled : FL-0608

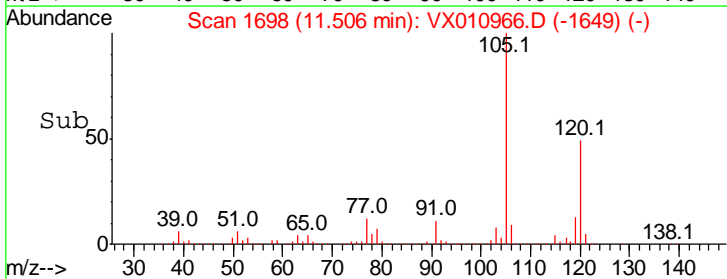
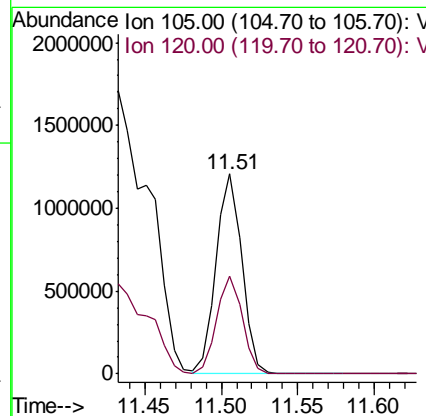
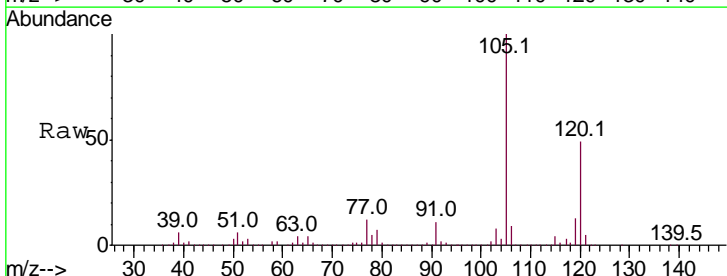
Tgt Ion	Resp	Lower	Upper
91	100		
120	24.1	12.3	36.8

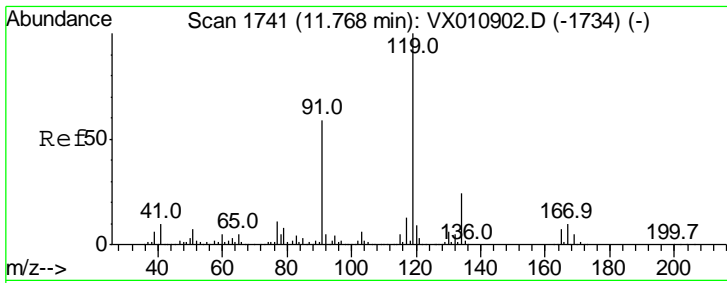
Manual Integrations
APPROVED
 MMDadoda
 7/22/2019 12:23:15 PM



#80
 1,3,5-Trimethylbenzene
 Concen: 135.088 ug/l
 RT: 11.51 min Scan# 1698
 Delta R.T. 0.00 min
 Lab File: VX010966.D
 Acq: 18 Jul 2019 18:05

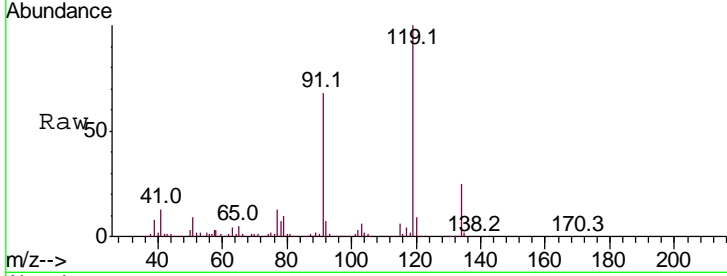
Tgt Ion	Resp	Lower	Upper
105	100		
120	49.0	24.6	73.8





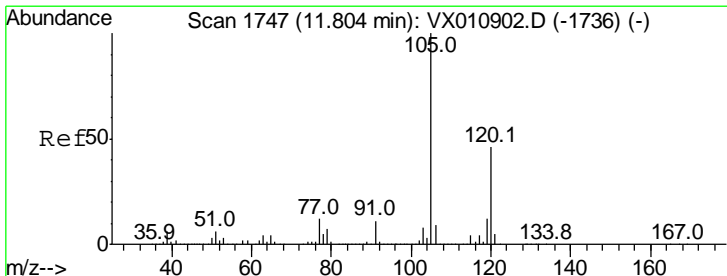
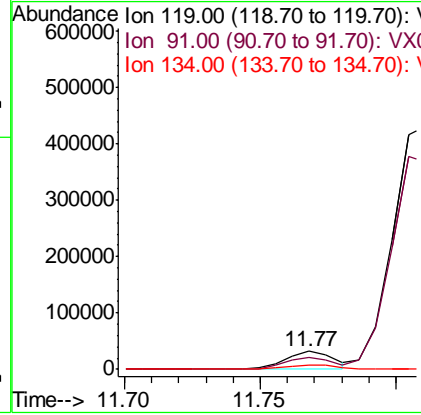
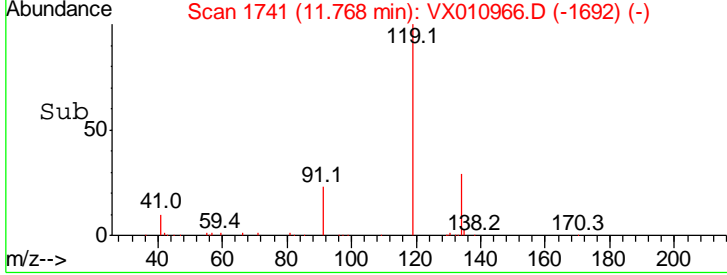
#83
 tert-Butylbenzene
 Concen: 3.744 ug/l
 RT: 11.77 min Scan# 1741
 Delta R.T. 0.00 min
 Lab File: VX010966.D
 Acq: 18 Jul 2019 18:05

Instrument : MSVOA_X
 ClientSampled : FL-0608

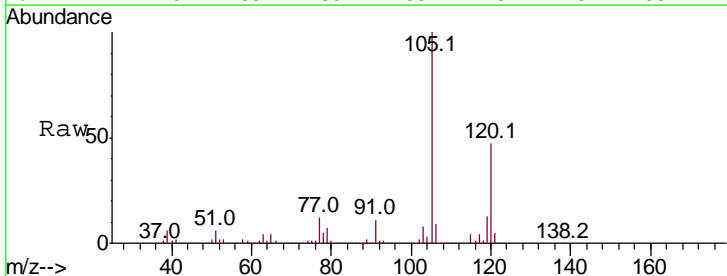


Tgt Ion	Resp	Lower	Upper
119	100		
91	66.3	28.6	85.8
134	24.9	11.6	34.8

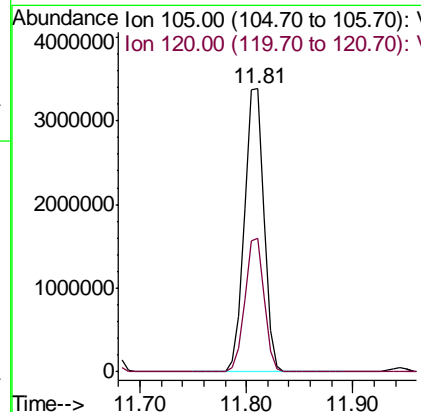
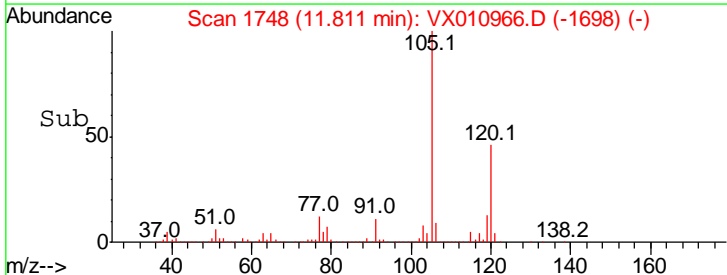
Manual Integrations
APPROVED
 MMDadoda
 7/22/2019 12:23:15 PM

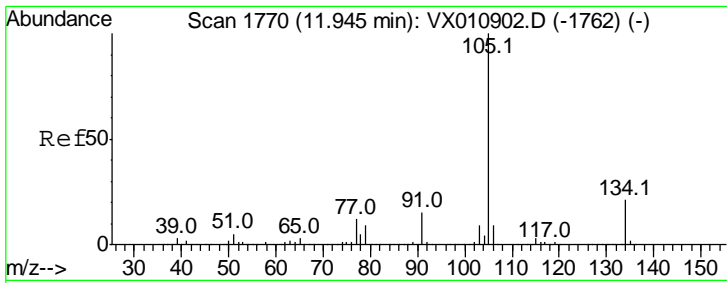


#84
 1,2,4-Trimethylbenzene
 Concen: 413.009 ug/l
 RT: 11.81 min Scan# 1748
 Delta R.T. 0.01 min
 Lab File: VX010966.D
 Acq: 18 Jul 2019 18:05



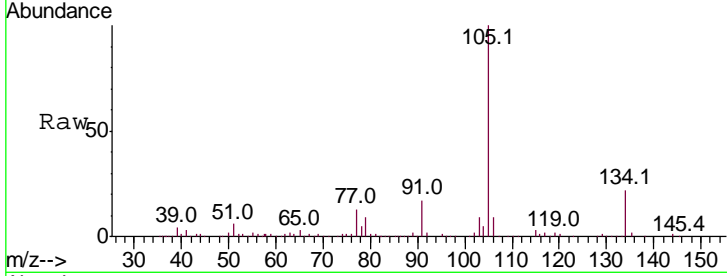
Tgt Ion	Resp	Lower	Upper
105	100		
120	46.5	22.9	68.5





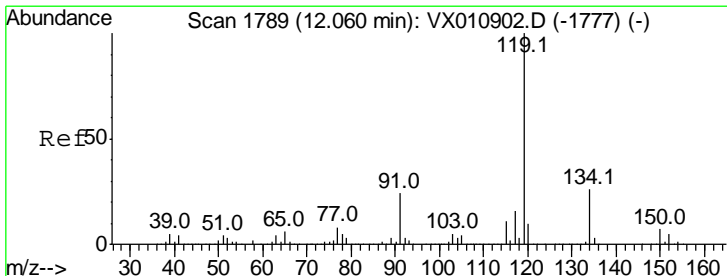
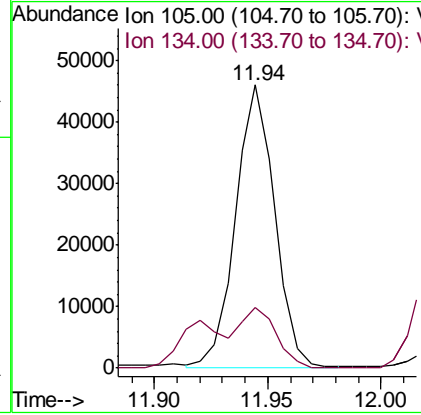
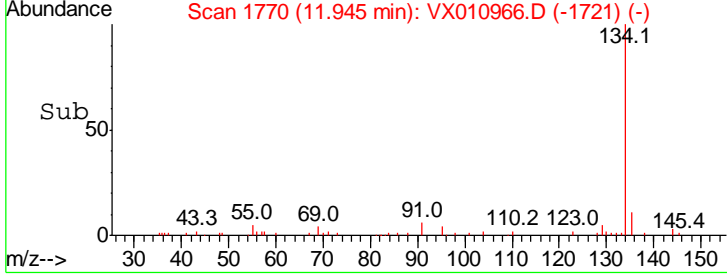
#85
 sec-Butylbenzene
 Concen: 4.611 ug/l m
 RT: 11.94 min Scan# 1770
 Delta R.T. 0.00 min
 Lab File: VX010966.D
 Acq: 18 Jul 2019 18:05

Instrument : MSVOA_X
 ClientSampled : FL-0608

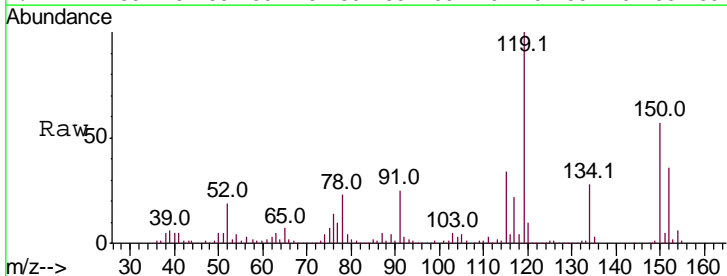


Tgt Ion: 105 Resp: 55656
 Ion Ratio Lower Upper
 105 100
 134 0.0 10.4 31.4#

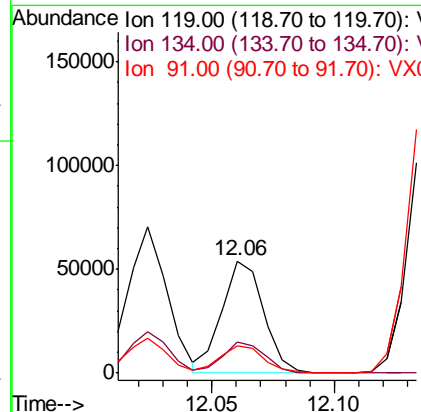
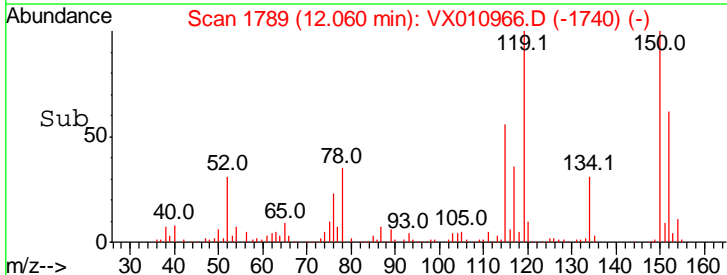
Manual Integrations APPROVED
 MMDadoda
 7/22/2019 12:23:15 PM

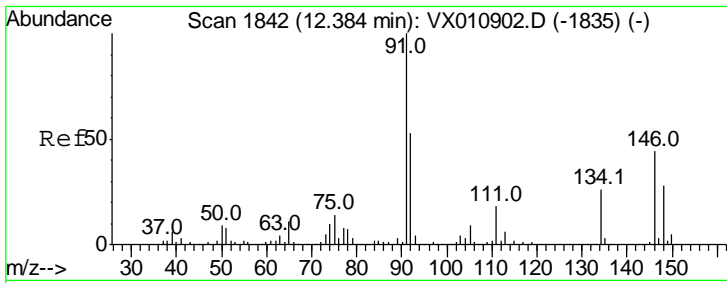


#86
 p-Isopropyltoluene
 Concen: 5.706 ug/l
 RT: 12.06 min Scan# 1789
 Delta R.T. 0.00 min
 Lab File: VX010966.D
 Acq: 18 Jul 2019 18:05



Tgt Ion: 119 Resp: 63663
 Ion Ratio Lower Upper
 119 100
 134 28.0 13.4 40.1
 91 25.0 11.8 35.4





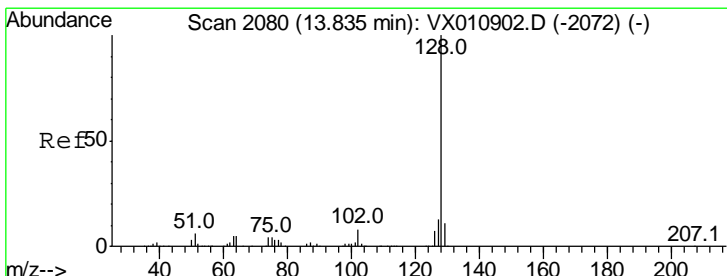
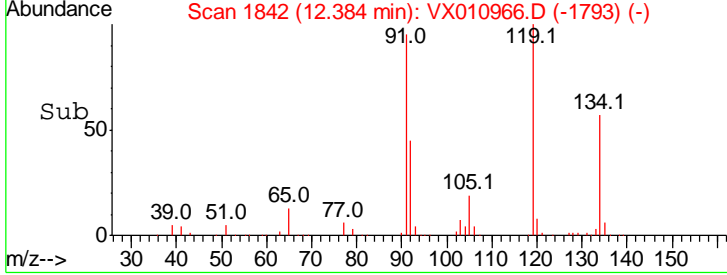
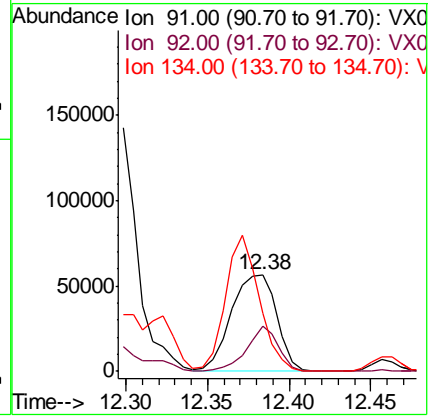
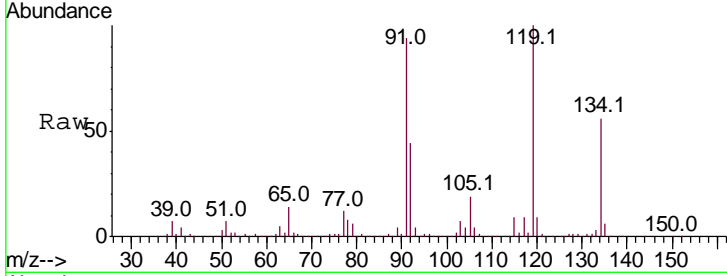
#89
 n-Butylbenzene
 Concen: 11.434 ug/l
 RT: 12.38 min Scan# 1842
 Delta R.T. 0.00 min
 Lab File: VX010966.D
 Acq: 18 Jul 2019 18:05

Instrument : MSVOA_X
 ClientSampled : FL-0608

Tgt Ion	Resp	Lower	Upper
91	109146		
91	100		
92	32.7	26.2	78.5
134	105.3	13.8	41.3#

Manual Integrations
 APPROVED

MMDadoda
 7/22/2019 12:23:15 PM



#95
 Naphthalene
 Concen: 212.677 ug/l
 RT: 13.83 min Scan# 2080
 Delta R.T. 0.00 min
 Lab File: VX010966.D
 Acq: 18 Jul 2019 18:05

Tgt Ion	Resp	Lower	Upper
128	2533982		
128	100		
127	13.2	10.4	15.6
129	11.1	8.9	13.3

