

Data Path : Z:\voasrv\HPCHEM1\MSVOA\_X\Data\VX071922\  
 Data File : VX030113.D  
 Acq On : 19 Jul 2022 12:54  
 Operator : JC/MD  
 Sample : VSTD100  
 Misc : 5.0mL/MSVOA\_X/WATER  
 ALS Vial : 6 Sample Multiplier: 1

Instrument :  
 MSVOA\_X  
 ClientSampleId :  
 VSTD100675

Quant Time: Jul 20 07:33:56 2022  
 Quant Method : Z:\voasrv\HPCHEM1\MSVOA\_X\Method\SFAMXML071922WMA.M  
 Quant Title : VOC Analysis  
 QLast Update : Wed Jul 20 07:31:59 2022  
 Response via : Initial Calibration

Compound	R.T.	QIon	Response	Conc	Units	Dev(Min)	
Internal Standards							
1) 1,4-Difluorobenzene	6.769	114	280865	50.000	ug/L	0.00	
28) Chlorobenzene-d5	10.055	117	261662	50.000	ug/L	0.00	
58) 1,4-Dichlorobenzene-d4	12.024	152	141164	50.000	ug/L	0.00	
System Monitoring Compounds							
4) Vinyl Chloride-d3	1.367	65	218761	99.856	ug/L	0.00	
7) Chloroethane-d5	1.660	69	162272	107.037	ug/L	0.00	
11) 1,1-Dichloroethene-d2	2.306	63	432483	102.060	ug/L	0.00	
21) 2-Butanone-d5	4.464	46	445078	206.543	ug/L	0.00	
24) Chloroform-d	5.062	84	454679	102.225	ug/L	0.00	
26) 1,2-Dichloroethane-d4	5.964	65	279764	100.542	ug/L	0.00	
32) Benzene-d6	5.976	84	969042	100.611	ug/L	0.00	
36) 1,2-Dichloropropane-d6	7.311	67	313023	101.345	ug/L	0.00	
41) Toluene-d8	8.653	98	890728	101.356	ug/L	0.00	
43) trans-1,3-Dichloroprop...	8.951	79	141385	107.788	ug/L	0.00	
47) 2-Hexanone-d5	9.384	63	332757	214.838	ug/L	0.00	
56) 1,1,2,2-Tetrachloroeth...	11.195	84	423639	102.786	ug/L	0.00	
66) 1,2-Dichlorobenzene-d4	12.323	152	330349	100.953	ug/L	0.00	
Target Compounds							
							Qvalue
2) Dichlorodifluoromethane	1.166	85	236867	100.710	ug/L		99
3) Chloromethane	1.288	50	215959	102.727	ug/L		98
5) Vinyl chloride	1.374	62	224541	102.468	ug/L		95
6) Bromomethane	1.605	94	100906	102.082	ug/L		98
8) Chloroethane	1.684	64	123895	102.457	ug/L		98
9) Trichlorofluoromethane	1.886	101	295213	104.068	ug/L		100
10) 1,1,2-Trichloro-1,2,2-...	2.325	101	205925	102.684	ug/L		100
12) 1,1-Dichloroethene	2.318	96	200624	103.763	ug/L		83
13) Acetone	2.386	43	242349	202.062	ug/L		98
14) Carbon disulfide	2.514	76	564522	103.746	ug/L		98
15) Methyl Acetate	2.709	43	283382	103.740	ug/L		100
16) Methylene chloride	2.788	84	232432	99.585	ug/L		97
17) trans-1,2-Dichloroethene	3.093	96	215042	104.516	ug/L		97
18) Methyl tert-butyl Ether	3.117	73	668133	105.408	ug/L		99
19) 1,1-Dichloroethane	3.611	63	393687	104.679	ug/L		98
20) cis-1,2-Dichloroethene	4.495	96	250041	104.666	ug/L		98
22) 2-Butanone	4.562	43	429926	209.650	ug/L		99
23) Bromochloromethane	4.909	128	120765	101.582	ug/L		97
25) Chloroform	5.098	83	405770	103.945	ug/L		97
27) 1,2-Dichloroethane	6.092	62	308218	105.125	ug/L		99
29) Cyclohexane	5.476	56	374367	104.304	ug/L		99
30) 1,1,1-Trichloroethane	5.391	97	331155	102.863	ug/L		99
31) Carbon tetrachloride	5.684	117	277844	104.771	ug/L		100
33) Benzene	6.043	78	941001	103.283	ug/L		100
34) Trichloroethene	7.129	95	251654	103.126	ug/L		96
35) Methylcyclohexane	7.385	83	390660	106.414	ug/L		100
37) 1,2-Dichloropropane	7.433	63	246450	104.548	ug/L		99
38) Bromodichloromethane	7.824	83	306257	104.973	ug/L		99
39) cis-1,3-Dichloropropene	8.372	75	362284	106.285	ug/L		99
40) 4-Methyl-2-pentanone	8.580	43	829951	213.971	ug/L		100
42) Toluene	8.720	91	1004450	106.178	ug/L		100
44) trans-1,3-Dichloropropene	8.982	75	349031	109.341	ug/L		98

Data Path : Z:\voasrv\HPCHEM1\MSVOA\_X\Data\VX071922\  
 Data File : VX030113.D  
 Acq On : 19 Jul 2022 12:54  
 Operator : JC/MD  
 Sample : VSTD100  
 Misc : 5.0mL/MSVOA\_X/WATER  
 ALS Vial : 6 Sample Multiplier: 1

Instrument :  
 MSVOA\_X  
 ClientSampleId :  
 VSTD100675

Quant Time: Jul 20 07:33:56 2022  
 Quant Method : Z:\voasrv\HPCHEM1\MSVOA\_X\Method\SFAMXML071922WMA.M  
 Quant Title : VOC Analysis  
 QLast Update : Wed Jul 20 07:31:59 2022  
 Response via : Initial Calibration

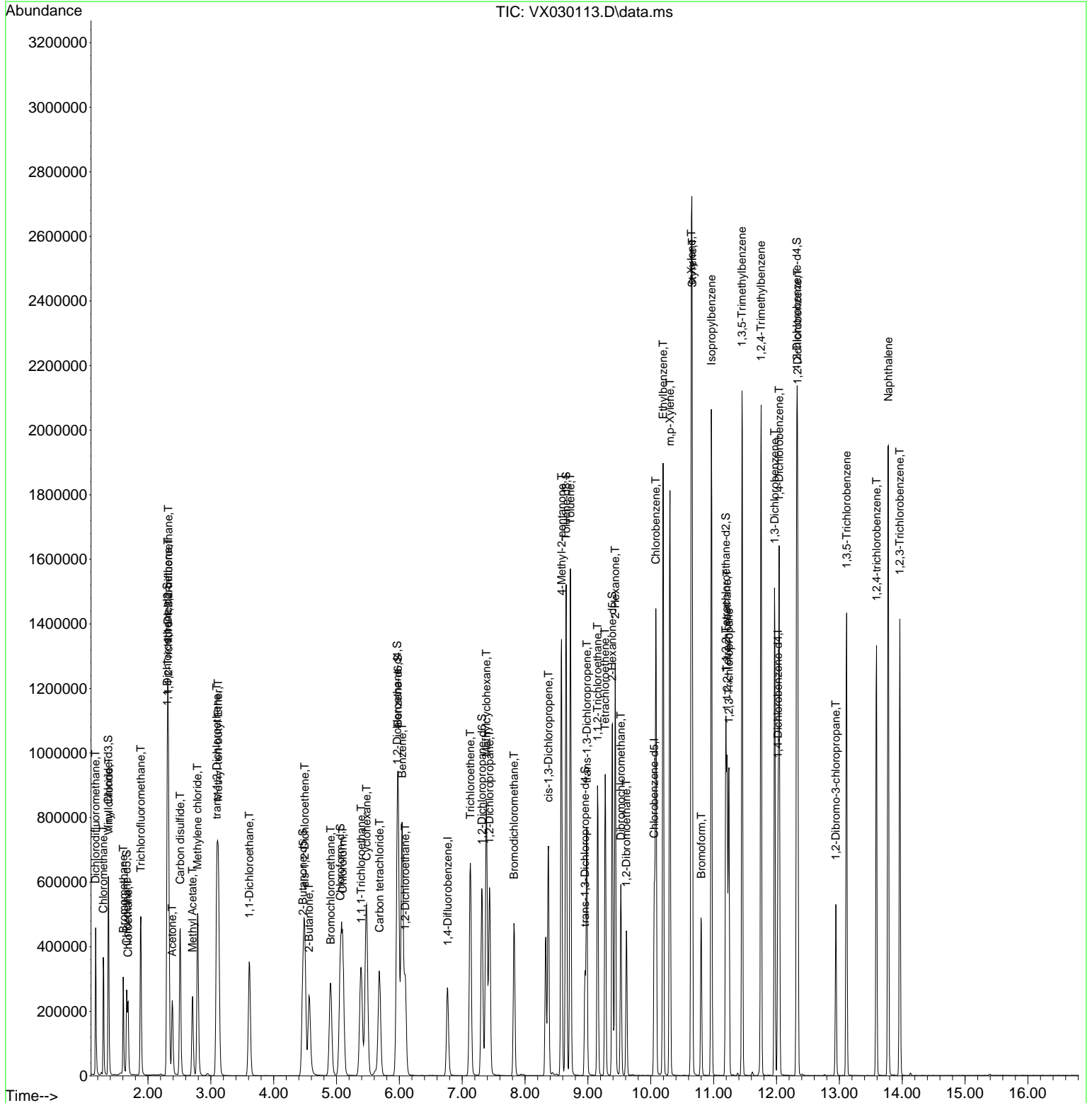
Compound	R.T.	QIon	Response	Conc	Units	Dev(Min)
45) 1,1,2-Trichloroethane	9.153	97	237099	103.903	ug/L	98
46) Tetrachloroethene	9.275	164	169028	99.984	ug/L	94
48) 2-Hexanone	9.433	43	665702	213.722	ug/L	99
49) Dibromochloromethane	9.524	129	247824	108.538	ug/L	100
50) 1,2-Dibromoethane	9.610	107	252462	104.186	ug/L	98
51) Chlorobenzene	10.079	112	620980	104.472	ug/L	97
52) Ethylbenzene	10.195	91	1083062	107.413	ug/L	100
53) m,p-Xylene	10.305	106	418986	106.598	ug/L	97
54) o-Xylene	10.646	106	412845	108.165	ug/L	99
55) Styrene	10.658	104	722693	109.911	ug/L	100
57) 1,1,2,2-Tetrachloroethane	11.213	83	372277	103.379	ug/L	99
59) Bromoform	10.805	173	174705	105.959	ug/L	98
60) Isopropylbenzene	10.963	105	1067920	103.215	ug/L	99
61) 1,2,3-Trichloropropane	11.244	75	313388	100.080	ug/L	100
62) 1,3,5-Trimethylbenzene	11.451	105	908447	106.256	ug/L	99
63) 1,2,4-Trimethylbenzene	11.756	105	907385	106.444	ug/L	99
64) 1,3-Dichlorobenzene	11.969	146	471322	103.563	ug/L	99
65) 1,4-Dichlorobenzene	12.042	146	473149	103.412	ug/L	98
67) 1,2-Dichlorobenzene	12.335	146	476696	102.963	ug/L	99
68) 1,2-Dibromo-3-chloropr...	12.945	75	101880	108.336	ug/L	98
69) 1,3,5-Trichlorobenzene	13.115	180	322814	105.051	ug/L	100
70) 1,2,4-trichlorobenzene	13.591	180	291639	108.127	ug/L	99
71) Naphthalene	13.780	128	1217805	110.364	ug/L	100
72) 1,2,3-Trichlorobenzene	13.963	180	301978	105.381	ug/L	100

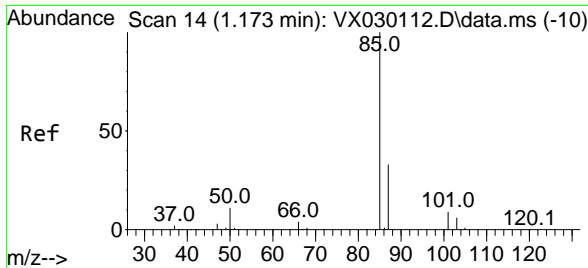
(#) = qualifier out of range (m) = manual integration (+) = signals summed

Data Path : Z:\voasrv\HPCHEM1\MSVOA\_X\Data\VX071922\  
 Data File : VX030113.D  
 Acq On : 19 Jul 2022 12:54  
 Operator : JC/MD  
 Sample : VSTD100  
 Misc : 5.0mL/MSVOA\_X/WATER  
 ALS Vial : 6 Sample Multiplier: 1

Instrument :  
 MSVOA\_X  
 Client Sample Id :  
 VSTD100675

Quant Time: Jul 20 07:33:56 2022  
 Quant Method : Z:\voasrv\HPCHEM1\MSVOA\_X\Method\SFAMXLM071922WMA.M  
 Quant Title : VOC Analysis  
 QLast Update : Wed Jul 20 07:31:59 2022  
 Response via : Initial Calibration

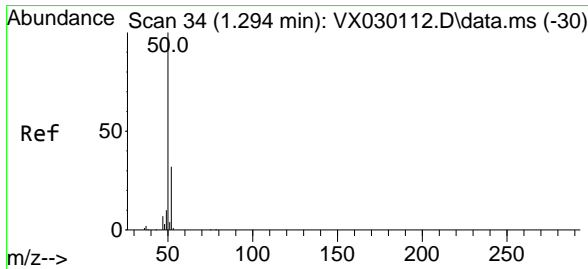
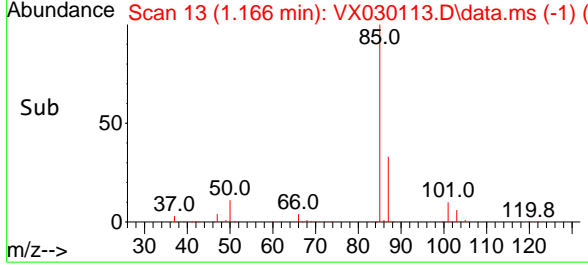
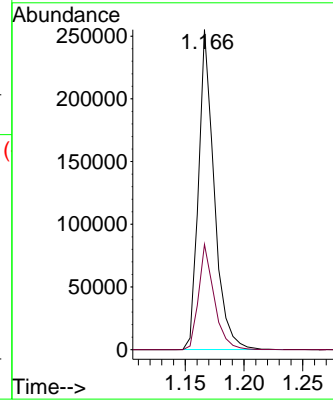
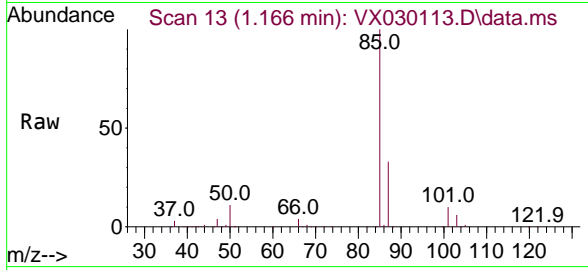




#2  
 Dichlorodifluoromethane  
 Concen: 100.710 ug/L  
 RT: 1.166 min Scan# 11  
 Delta R.T. -0.006 min  
 Lab File: VX030113.D  
 Acq: 19 Jul 2022 12:54

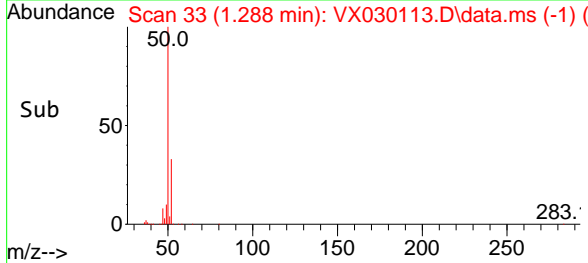
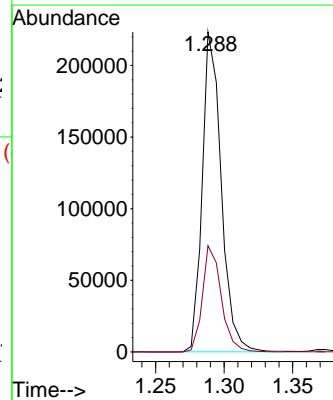
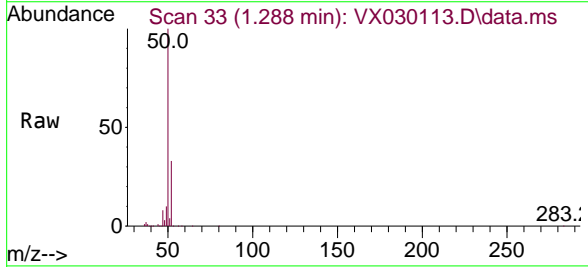
Instrument : MSVOA\_X  
 ClientSampleId : VSTD100675

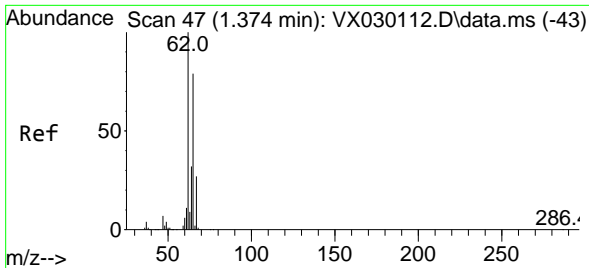
Tgt Ion: 85 Resp: 236867  
 Ion Ratio Lower Upper  
 85 100  
 87 32.9 25.7 38.5



#3  
 Chloromethane  
 Concen: 102.727 ug/L  
 RT: 1.288 min Scan# 33  
 Delta R.T. -0.006 min  
 Lab File: VX030113.D  
 Acq: 19 Jul 2022 12:54

Tgt Ion: 50 Resp: 215959  
 Ion Ratio Lower Upper  
 50 100  
 52 33.2 22.6 42.0

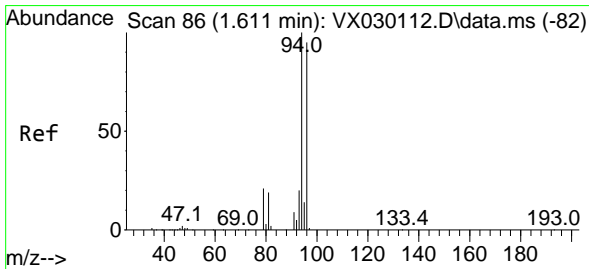
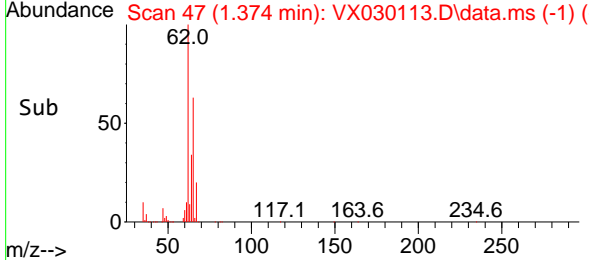
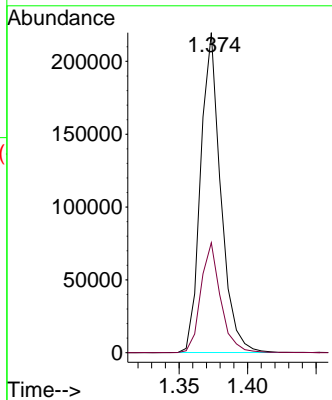
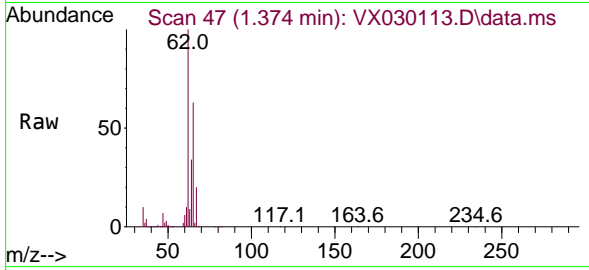




#5  
 Vinyl chloride  
 Concen: 102.468 ug/L  
 RT: 1.374 min Scan# 41  
 Delta R.T. -0.000 min  
 Lab File: VX030113.D  
 Acq: 19 Jul 2022 12:54

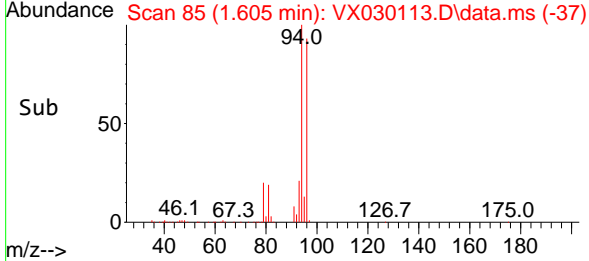
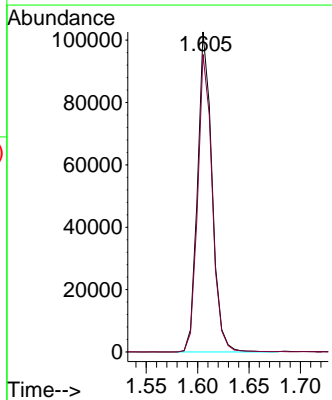
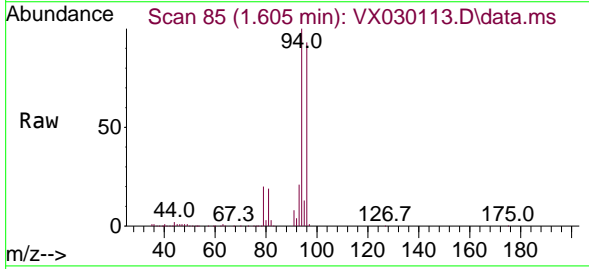
Instrument : MSVOA\_X  
 ClientSampleId : VSTD100675

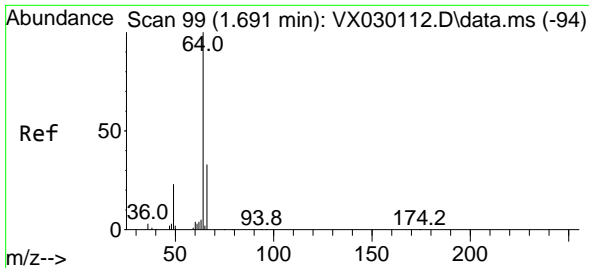
Tgt Ion: 62 Resp: 224541  
 Ion Ratio Lower Upper  
 62 100  
 64 34.3 22.1 41.1



#6  
 Bromomethane  
 Concen: 102.082 ug/L  
 RT: 1.605 min Scan# 85  
 Delta R.T. -0.006 min  
 Lab File: VX030113.D  
 Acq: 19 Jul 2022 12:54

Tgt Ion: 94 Resp: 100906  
 Ion Ratio Lower Upper  
 94 100  
 96 93.0 66.5 123.5

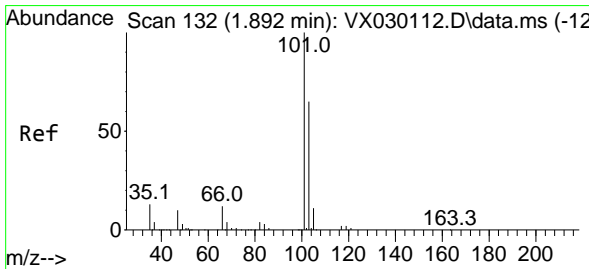
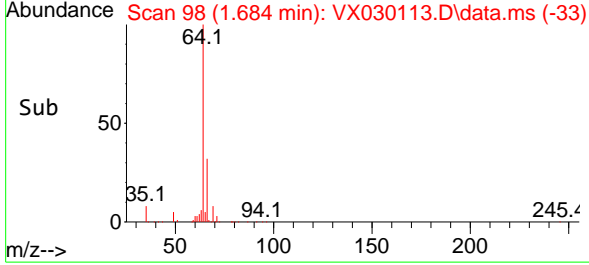
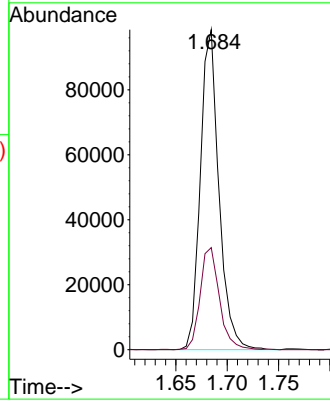
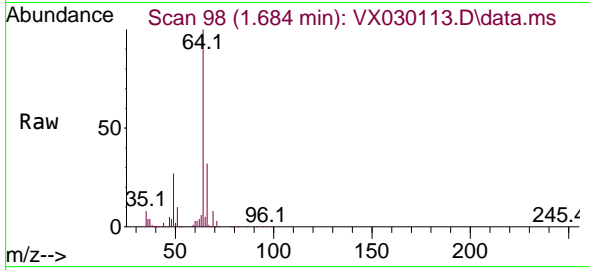




#8  
 Chloroethane  
 Concen: 102.457 ug/L  
 RT: 1.684 min Scan# 91  
 Delta R.T. -0.006 min  
 Lab File: VX030113.D  
 Acq: 19 Jul 2022 12:54

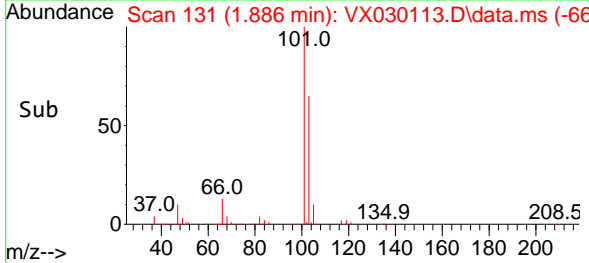
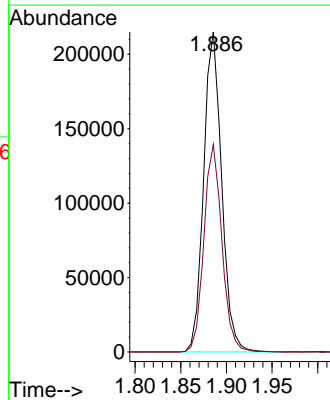
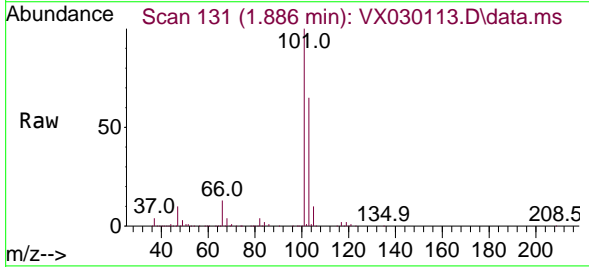
Instrument : MSVOA\_X  
 ClientSampleId : VSTD100675

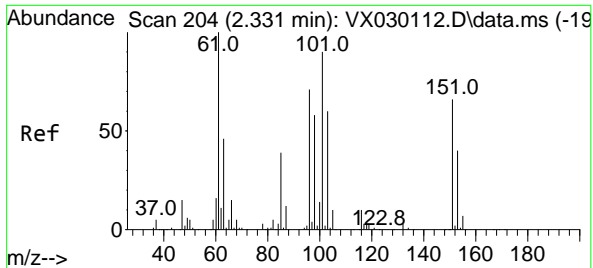
Tgt Ion: 64 Resp: 123895  
 Ion Ratio Lower Upper  
 64 100  
 66 31.9 23.0 42.6



#9  
 Trichlorofluoromethane  
 Concen: 104.068 ug/L  
 RT: 1.886 min Scan# 131  
 Delta R.T. -0.006 min  
 Lab File: VX030113.D  
 Acq: 19 Jul 2022 12:54

Tgt Ion: 101 Resp: 295213  
 Ion Ratio Lower Upper  
 101 100  
 103 64.8 51.8 77.6



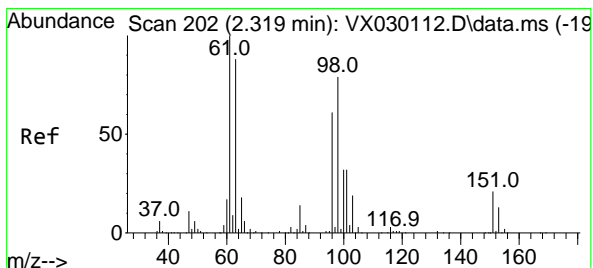
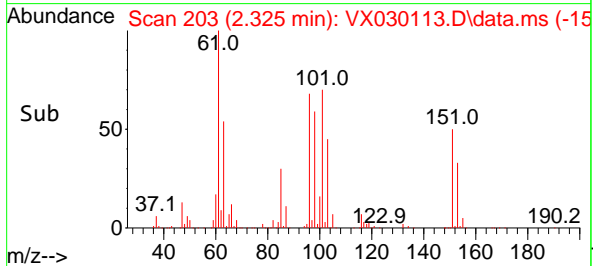
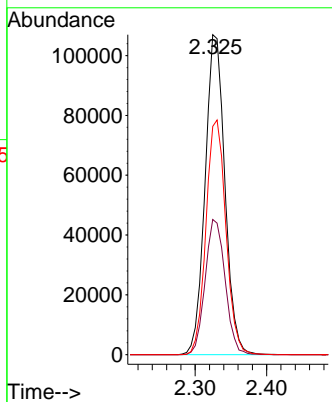
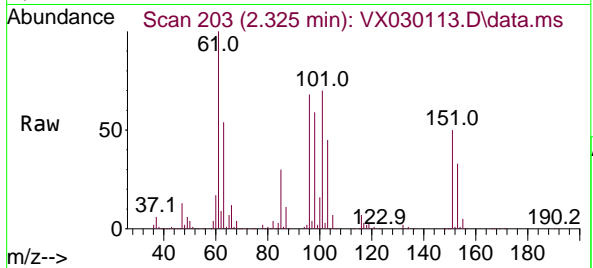


#10  
 1,1,2-Trichloro-1,2,2-trifluoroethane  
 Concen: 102.684 ug/L  
 RT: 2.325 min Scan# 203  
 Delta R.T. -0.006 min  
 Lab File: VX030113.D  
 Acq: 19 Jul 2022 12:54

Instrument : MSVOA\_X  
 Client Sample Id : VSTD100675

Tgt Ion:101 Resp: 205925

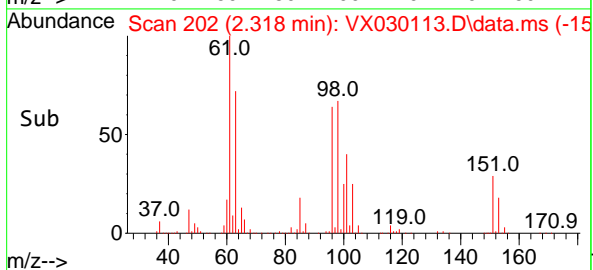
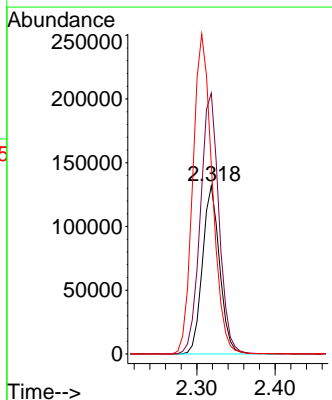
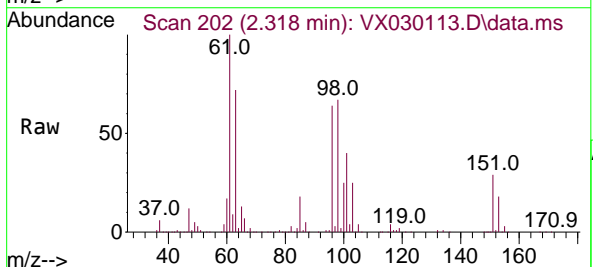
Ion	Ratio	Lower	Upper
101	100		
85	42.6	34.1	51.1
151	73.8	59.4	89.2

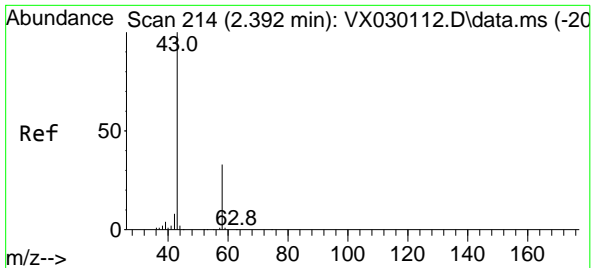


#12  
 1,1-Dichloroethene  
 Concen: 103.763 ug/L  
 RT: 2.318 min Scan# 202  
 Delta R.T. -0.000 min  
 Lab File: VX030113.D  
 Acq: 19 Jul 2022 12:54

Tgt Ion: 96 Resp: 200624

Ion	Ratio	Lower	Upper
96	100		
61	155.1	115.1	213.7
63	112.2	104.1	193.3

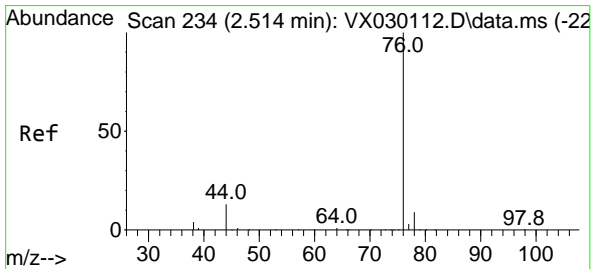
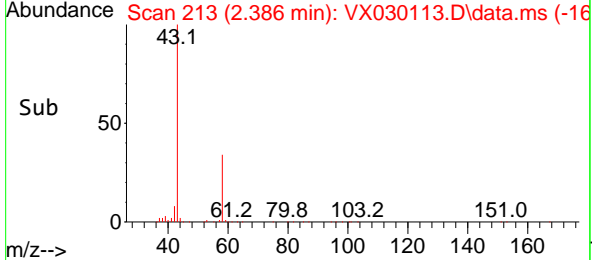
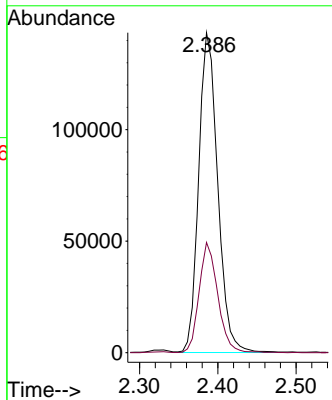
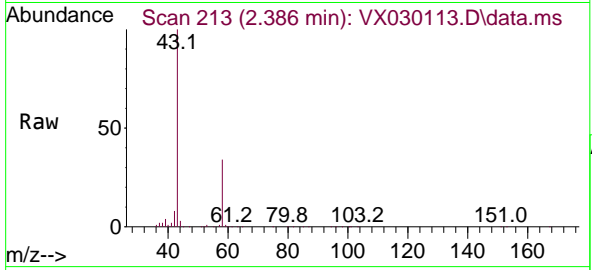




#13  
 Acetone  
 Concen: 202.062 ug/L  
 RT: 2.386 min Scan# 213  
 Delta R.T. -0.006 min  
 Lab File: VX030113.D  
 Acq: 19 Jul 2022 12:54

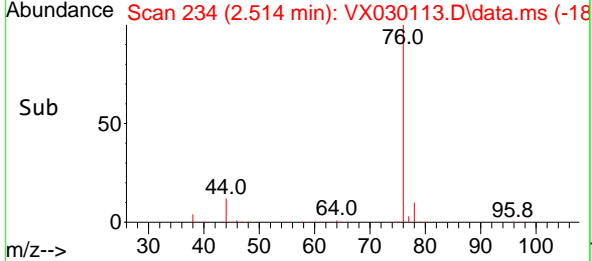
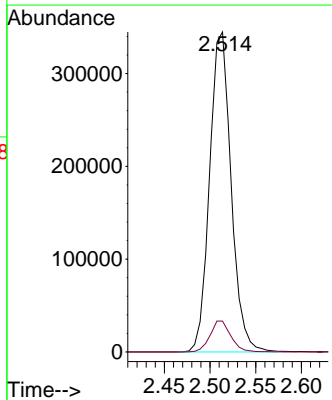
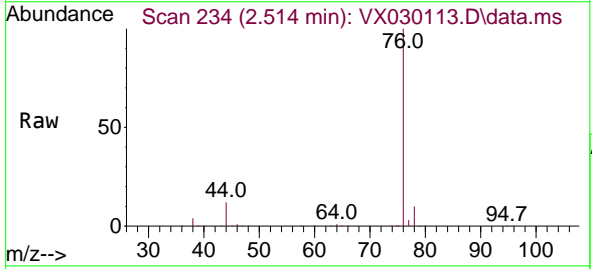
Instrument : MSVOA\_X  
 ClientSampleId : VSTD100675

Tgt Ion: 43 Resp: 242349  
 Ion Ratio Lower Upper  
 43 100  
 58 33.7 0.0 65.6

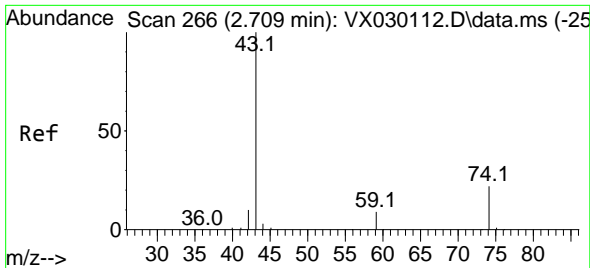


#14  
 Carbon disulfide  
 Concen: 103.746 ug/L  
 RT: 2.514 min Scan# 234  
 Delta R.T. -0.000 min  
 Lab File: VX030113.D  
 Acq: 19 Jul 2022 12:54

Tgt Ion: 76 Resp: 564522  
 Ion Ratio Lower Upper  
 76 100  
 78 9.7 7.3 10.9

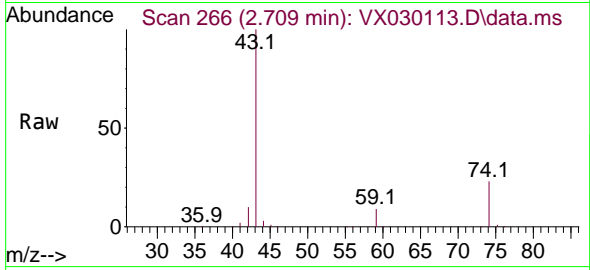




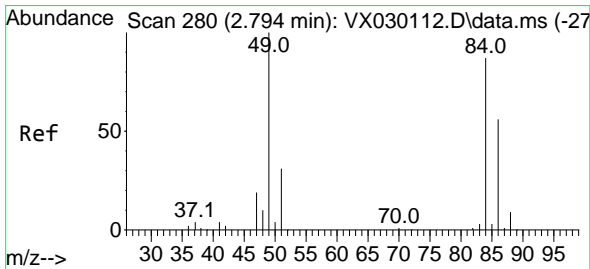
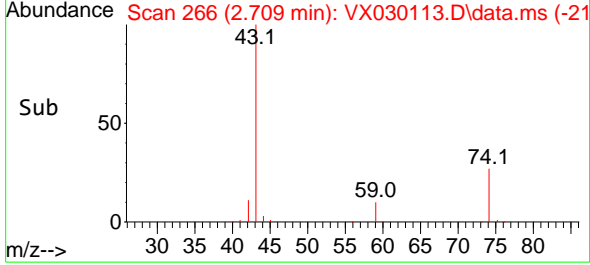
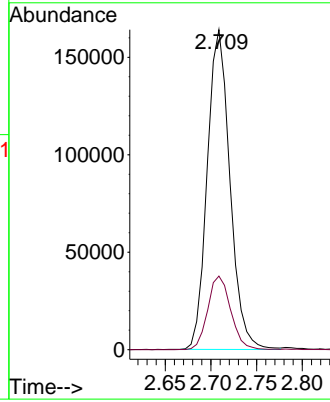


#15  
 Methyl Acetate  
 Concen: 103.740 ug/L  
 RT: 2.709 min Scan# 210  
 Delta R.T. -0.000 min  
 Lab File: VX030113.D  
 Acq: 19 Jul 2022 12:54

Instrument :  
 MSVOA\_X  
 ClientSampleId :  
 VSTD100675

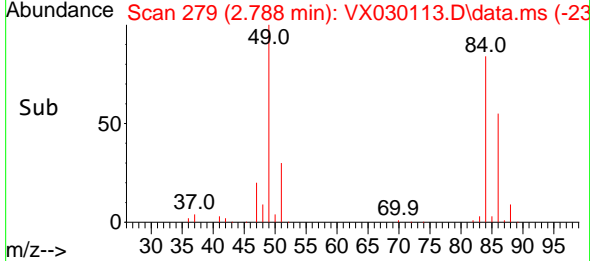
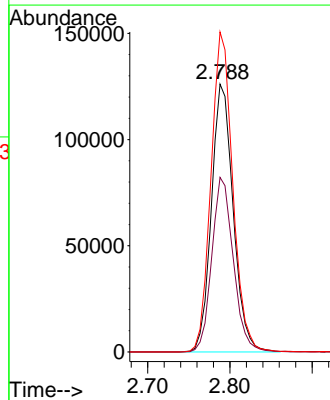
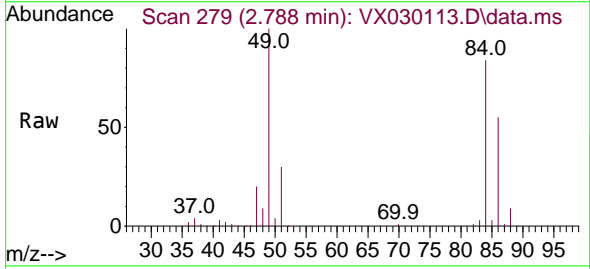


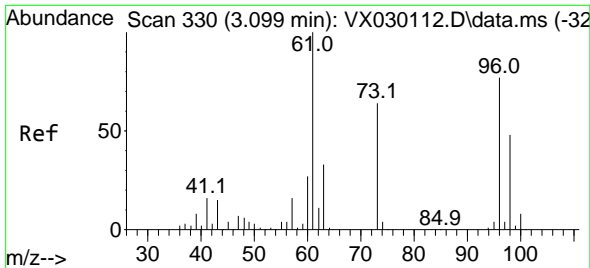
Tgt Ion: 43 Resp: 283382  
 Ion Ratio Lower Upper  
 43 100  
 74 23.2 18.7 28.1



#16  
 Methylene chloride  
 Concen: 99.585 ug/L  
 RT: 2.788 min Scan# 279  
 Delta R.T. -0.006 min  
 Lab File: VX030113.D  
 Acq: 19 Jul 2022 12:54

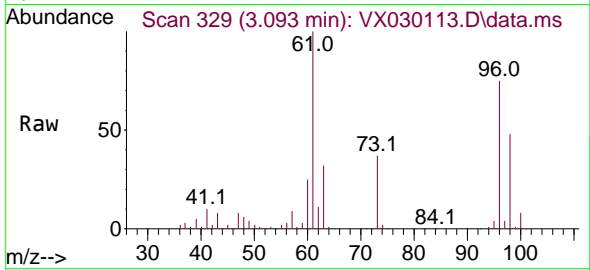
Tgt Ion: 84 Resp: 232432  
 Ion Ratio Lower Upper  
 84 100  
 86 65.2 44.8 83.2  
 49 119.5 80.6 149.6



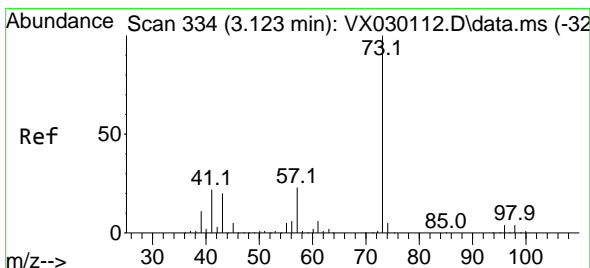
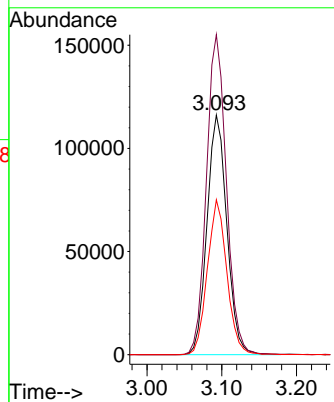
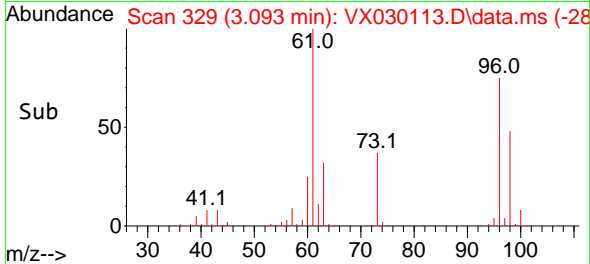


#17  
 trans-1,2-Dichloroethene  
 Concen: 104.516 ug/L  
 RT: 3.093 min Scan# 311  
 Delta R.T. -0.006 min  
 Lab File: VX030113.D  
 Acq: 19 Jul 2022 12:54

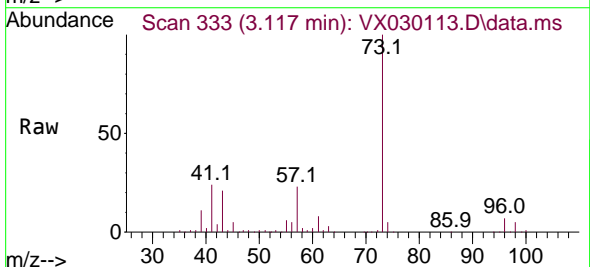
Instrument :  
 MSVOA\_X  
 ClientSampleId :  
 VSTD100675



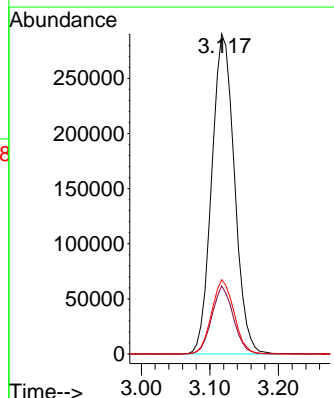
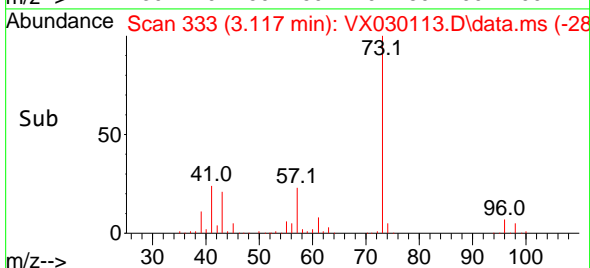
Tgt Ion: 96 Resp: 215042  
 Ion Ratio Lower Upper  
 96 100  
 61 133.5 90.4 168.0  
 98 64.6 43.8 81.4

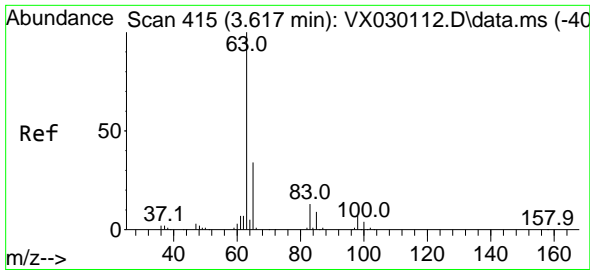


#18  
 Methyl tert-butyl Ether  
 Concen: 105.408 ug/L  
 RT: 3.117 min Scan# 333  
 Delta R.T. -0.006 min  
 Lab File: VX030113.D  
 Acq: 19 Jul 2022 12:54



Tgt Ion: 73 Resp: 668133  
 Ion Ratio Lower Upper  
 73 100  
 43 20.1 16.2 24.4  
 57 22.8 17.7 26.5

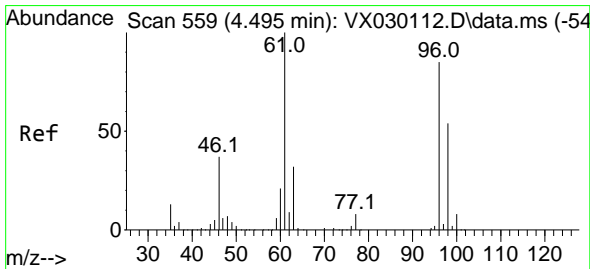
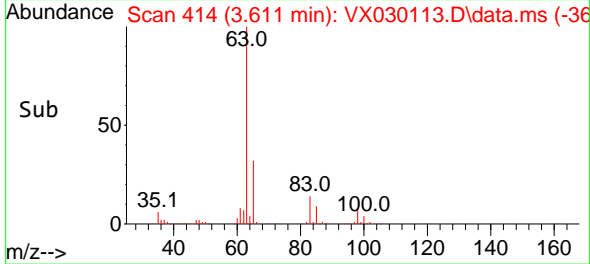
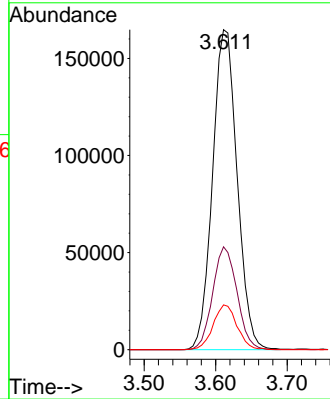
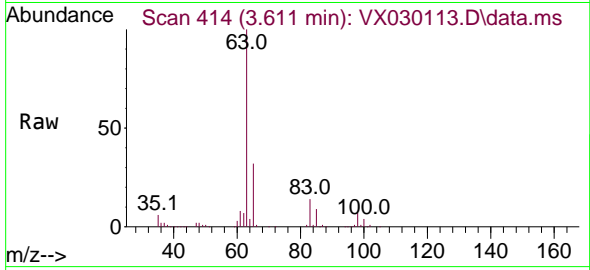




#19  
 1,1-Dichloroethane  
 Concen: 104.679 ug/L  
 RT: 3.611 min Scan# 415  
 Delta R.T. -0.006 min  
 Lab File: VX030113.D  
 Acq: 19 Jul 2022 12:54

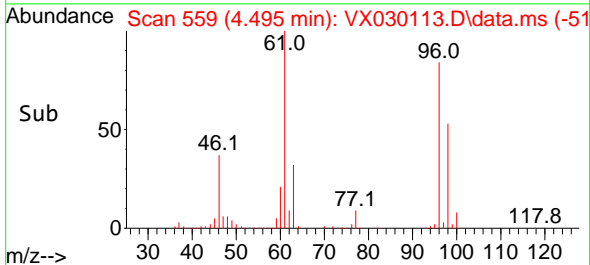
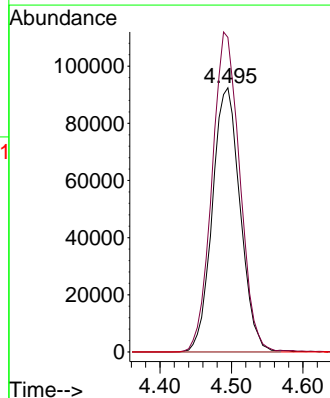
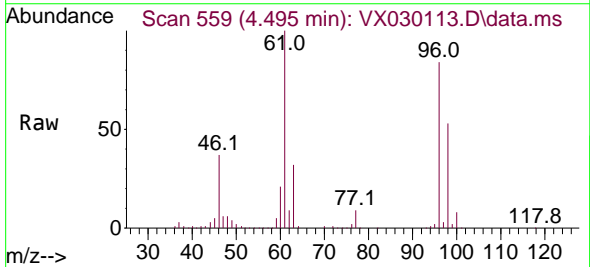
Instrument :  
 MSVOA\_X  
 ClientSampleId :  
 VSTD100675

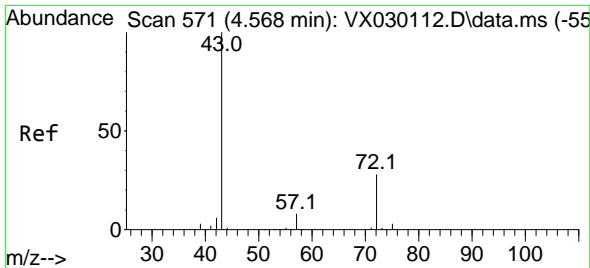
Tgt Ion: 63 Resp: 393687  
 Ion Ratio Lower Upper  
 63 100  
 65 32.2 23.4 43.6  
 83 14.0 9.3 17.3



#20  
 cis-1,2-Dichloroethene  
 Concen: 104.666 ug/L  
 RT: 4.495 min Scan# 559  
 Delta R.T. -0.000 min  
 Lab File: VX030113.D  
 Acq: 19 Jul 2022 12:54

Tgt Ion: 96 Resp: 250041  
 Ion Ratio Lower Upper  
 96 100  
 61 119.1 82.1 152.5  
 68 0.0 0.0 0.0

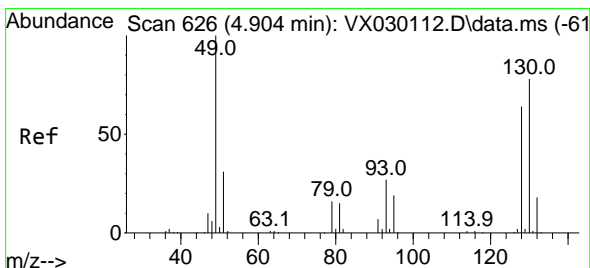
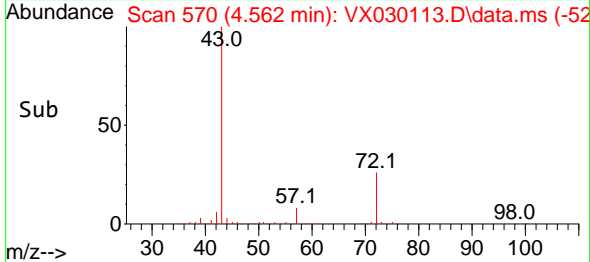
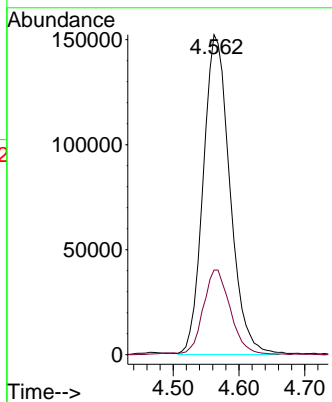
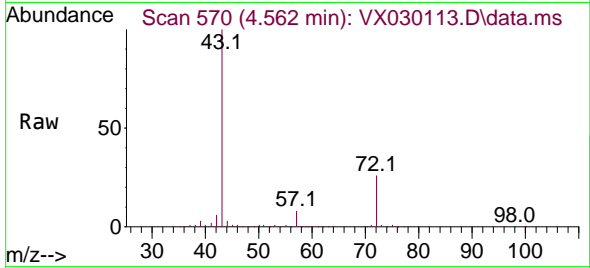




#22  
 2-Butanone  
 Concen: 209.650 ug/L  
 RT: 4.562 min Scan# 51  
 Delta R.T. -0.006 min  
 Lab File: VX030113.D  
 Acq: 19 Jul 2022 12:54

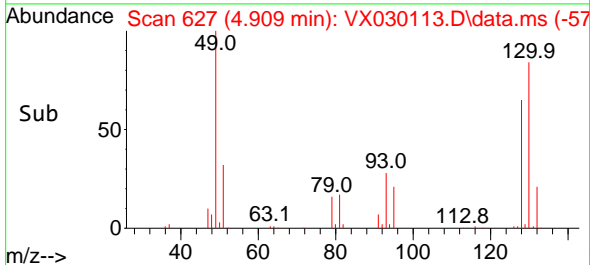
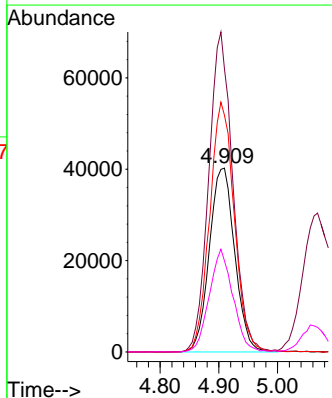
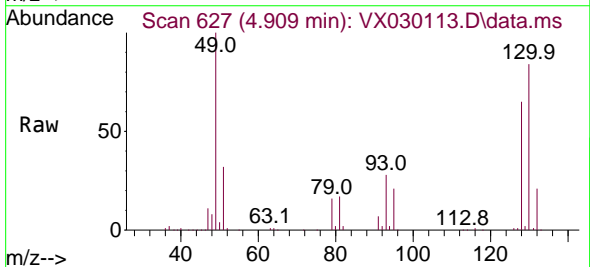
Instrument :  
 MSVOA\_X  
 ClientSampleId :  
 VSTD100675

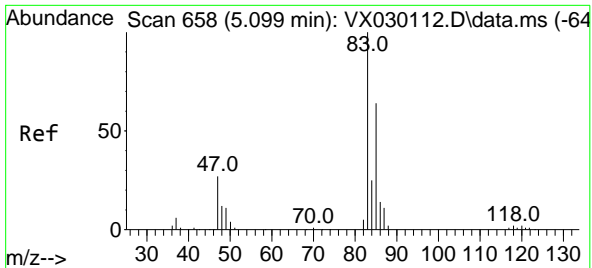
Tgt Ion: 43 Resp: 429926  
 Ion Ratio Lower Upper  
 43 100  
 72 26.9 13.1 39.3



#23  
 Bromochloromethane  
 Concen: 101.582 ug/L  
 RT: 4.909 min Scan# 627  
 Delta R.T. 0.006 min  
 Lab File: VX030113.D  
 Acq: 19 Jul 2022 12:54

Tgt Ion:128 Resp: 120765  
 Ion Ratio Lower Upper  
 128 100  
 49 154.1 110.0 204.4  
 130 128.9 86.0 159.6  
 51 49.6 38.6 58.0

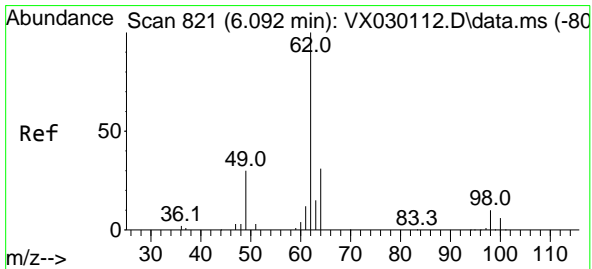
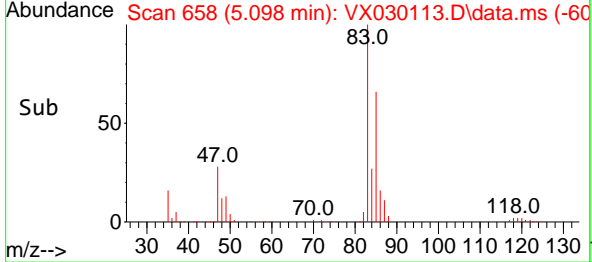
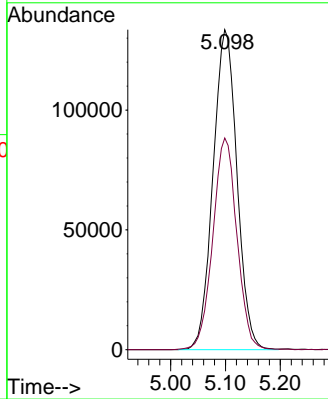
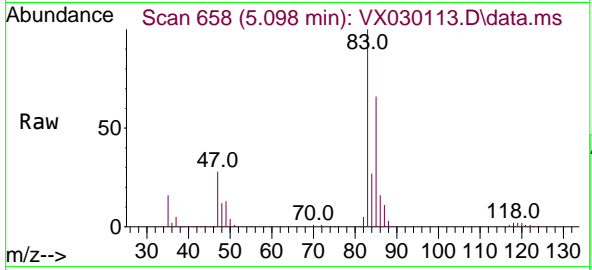




#25  
 Chloroform  
 Concen: 103.945 ug/L  
 RT: 5.098 min Scan# 611  
 Delta R.T. -0.000 min  
 Lab File: VX030113.D  
 Acq: 19 Jul 2022 12:54

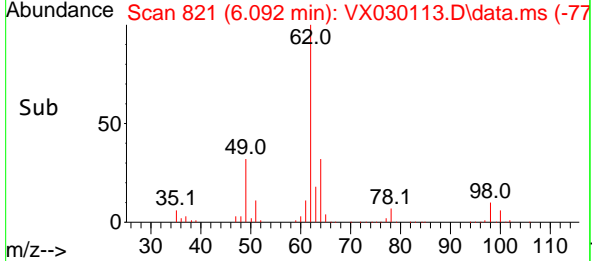
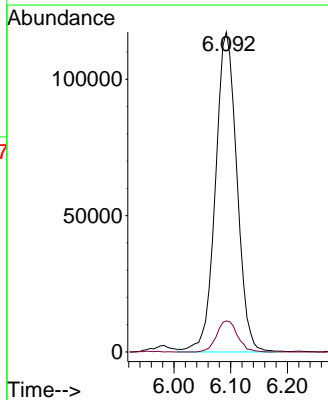
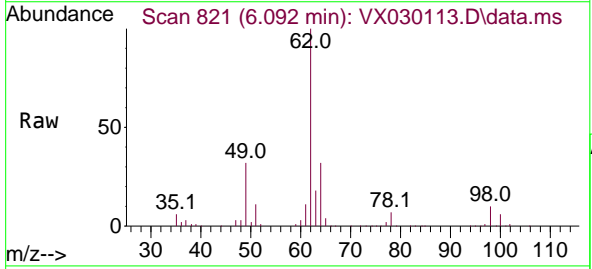
Instrument : MSVOA\_X  
 ClientSampleId : VSTD100675

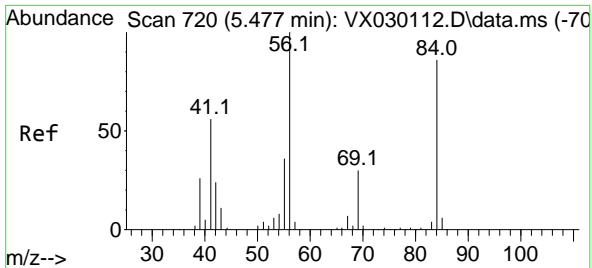
Tgt Ion	Resp	Lower	Upper
83	100		
85	66.2	44.7	82.9



#27  
 1,2-Dichloroethane  
 Concen: 105.125 ug/L  
 RT: 6.092 min Scan# 821  
 Delta R.T. -0.000 min  
 Lab File: VX030113.D  
 Acq: 19 Jul 2022 12:54

Tgt Ion	Resp	Lower	Upper
62	100		
98	9.7	8.0	12.0



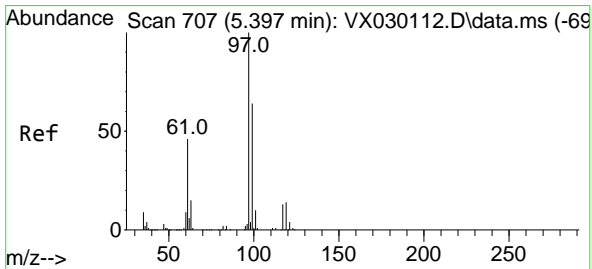
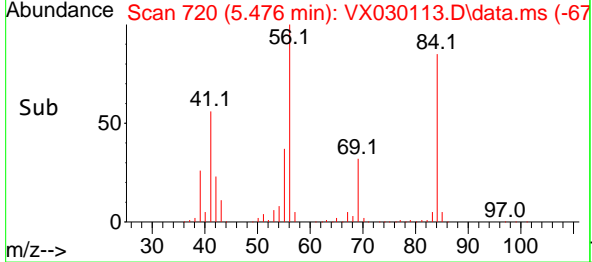
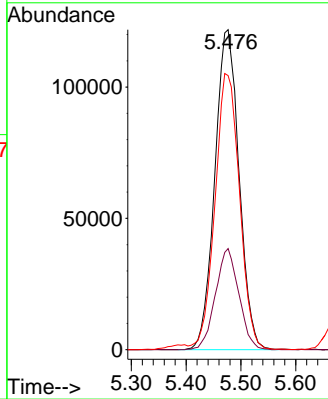
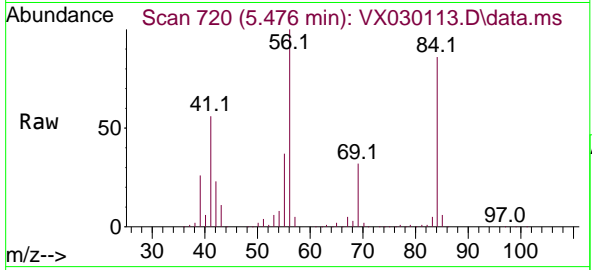


#29  
 Cyclohexane  
 Concen: 104.304 ug/L  
 RT: 5.476 min Scan# 710  
 Delta R.T. -0.000 min  
 Lab File: VX030113.D  
 Acq: 19 Jul 2022 12:54

Instrument : MSVOA\_X  
 ClientSampleId : VSTD100675

Tgt Ion: 56 Resp: 374367

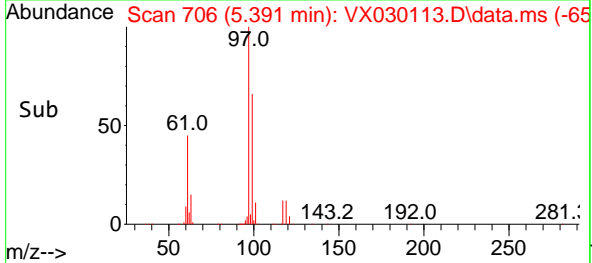
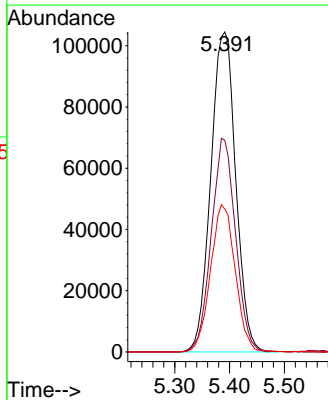
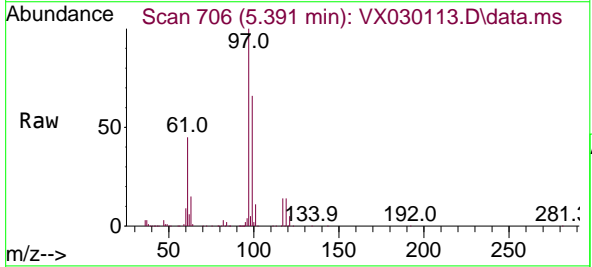
Ion	Ratio	Lower	Upper
56	100		
69	30.5	24.2	36.2
84	87.4	70.4	105.6

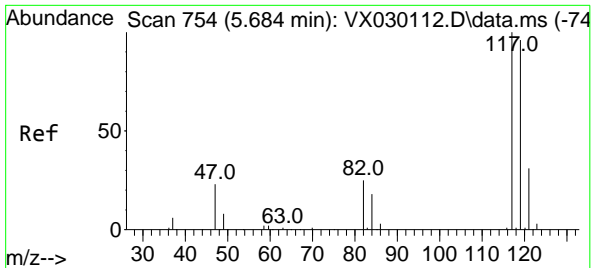


#30  
 1,1,1-Trichloroethane  
 Concen: 102.863 ug/L  
 RT: 5.391 min Scan# 706  
 Delta R.T. -0.006 min  
 Lab File: VX030113.D  
 Acq: 19 Jul 2022 12:54

Tgt Ion: 97 Resp: 331155

Ion	Ratio	Lower	Upper
97	100		
99	64.6	51.2	76.8
61	45.6	36.8	55.2

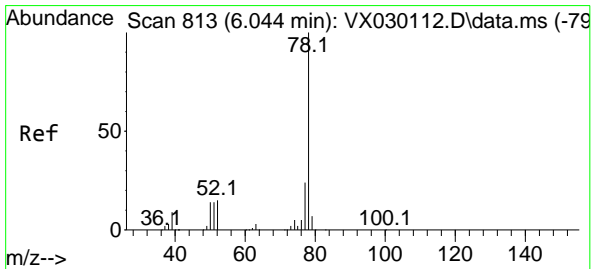
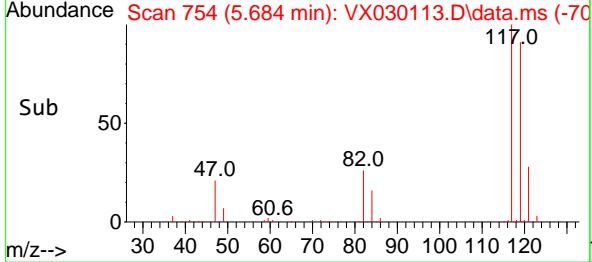
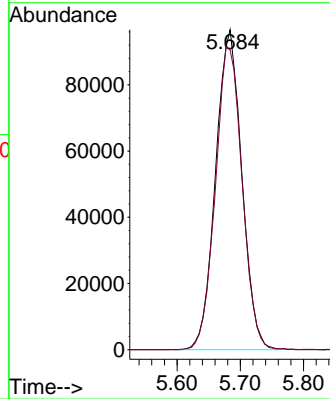
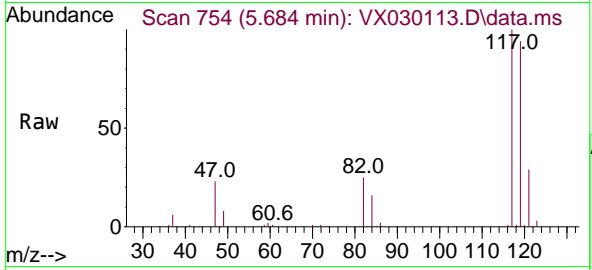




#31  
 Carbon tetrachloride  
 Concen: 104.771 ug/L  
 RT: 5.684 min Scan# 754  
 Delta R.T. -0.000 min  
 Lab File: VX030113.D  
 Acq: 19 Jul 2022 12:54

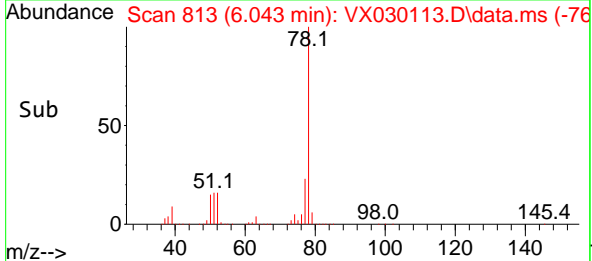
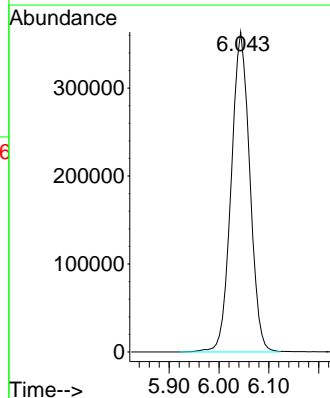
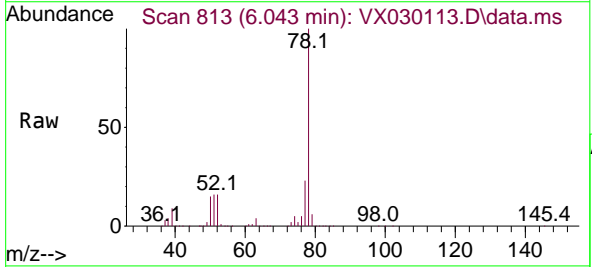
Instrument : MSVOA\_X  
 ClientSampleId : VSTD100675

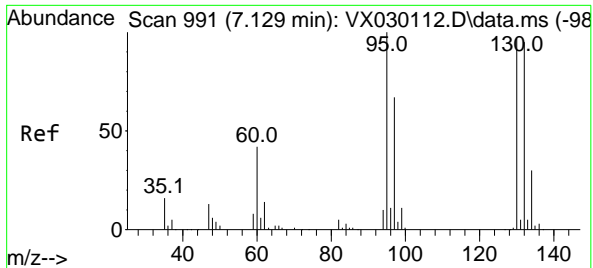
Tgt Ion:117 Resp: 277844  
 Ion Ratio Lower Upper  
 117 100  
 119 96.3 77.4 116.2



#33  
 Benzene  
 Concen: 103.283 ug/L  
 RT: 6.043 min Scan# 813  
 Delta R.T. -0.000 min  
 Lab File: VX030113.D  
 Acq: 19 Jul 2022 12:54

Tgt Ion: 78 Resp: 941001



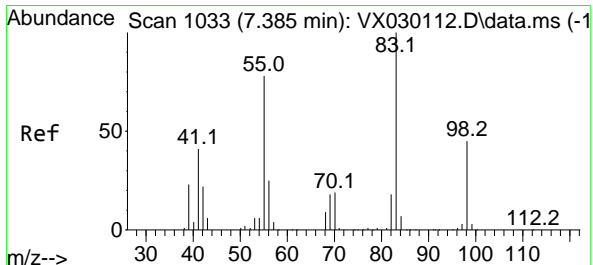
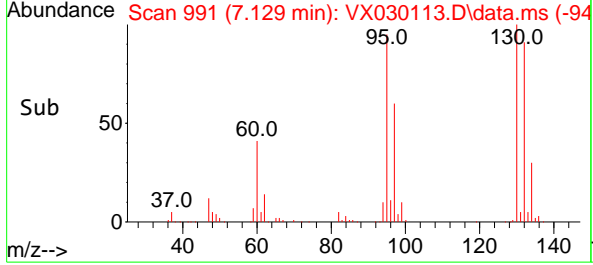
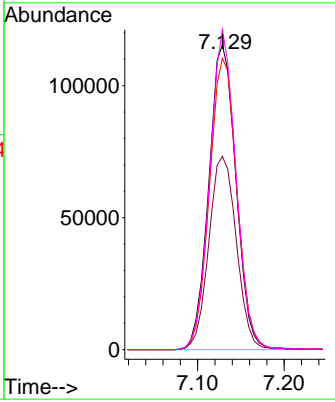
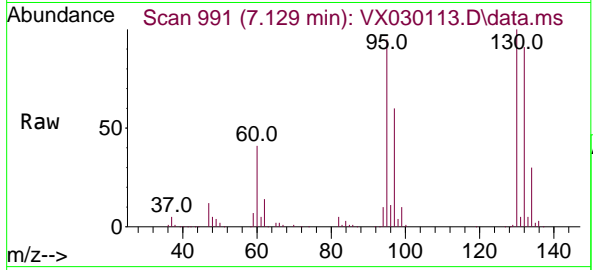


#34  
 Trichloroethene  
 Concen: 103.126 ug/L  
 RT: 7.129 min Scan# 991  
 Delta R.T. -0.000 min  
 Lab File: VX030113.D  
 Acq: 19 Jul 2022 12:54

Instrument : MSVOA\_X  
 ClientSampleId : VSTD100675

Tgt Ion: 95 Resp: 251654

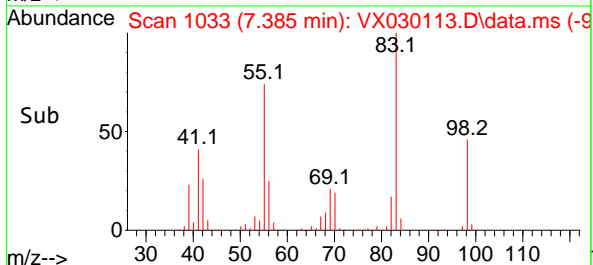
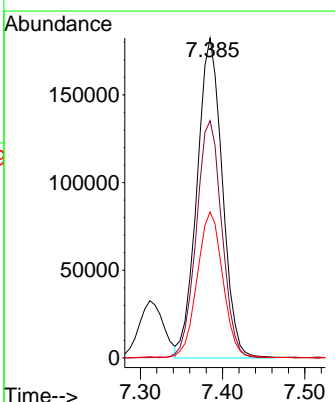
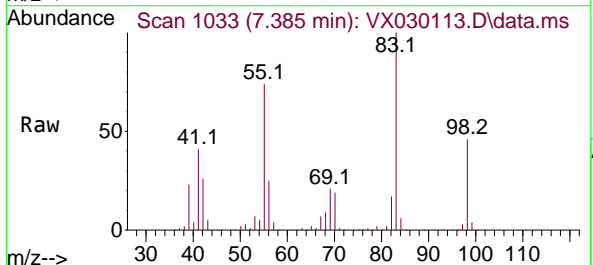
Ion	Ratio	Lower	Upper
95	100		
97	63.4	46.6	86.6
132	95.7	66.4	123.2
130	105.0	67.8	126.0



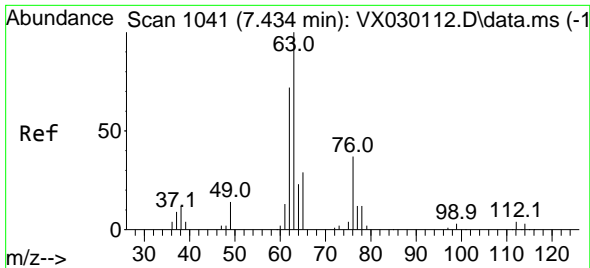
#35  
 Methylcyclohexane  
 Concen: 106.414 ug/L  
 RT: 7.385 min Scan# 1033  
 Delta R.T. -0.000 min  
 Lab File: VX030113.D  
 Acq: 19 Jul 2022 12:54

Tgt Ion: 83 Resp: 390660

Ion	Ratio	Lower	Upper
83	100		
55	74.8	59.7	89.5
98	46.4	37.0	55.6



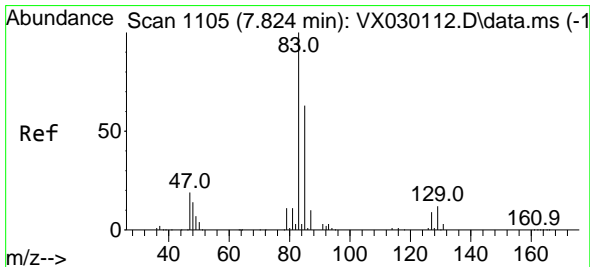
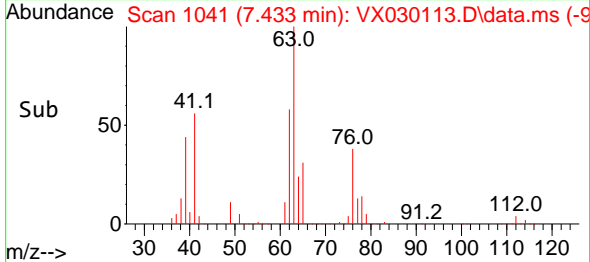
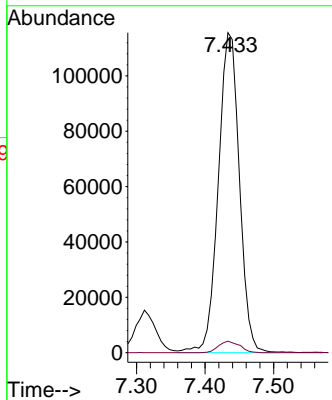
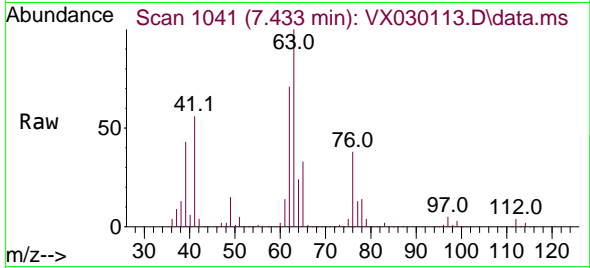




#37  
 1,2-Dichloropropane  
 Concen: 104.548 ug/L  
 RT: 7.433 min Scan# 1041  
 Delta R.T. -0.000 min  
 Lab File: VX030113.D  
 Acq: 19 Jul 2022 12:54

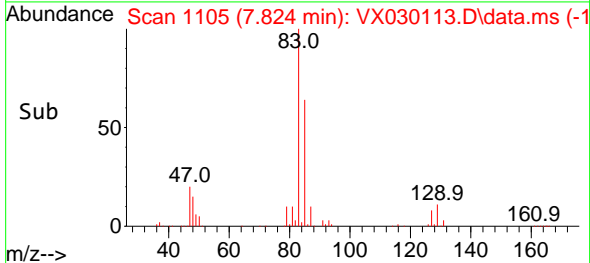
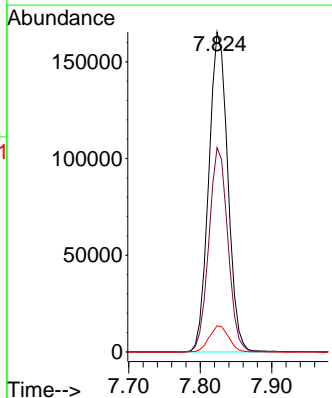
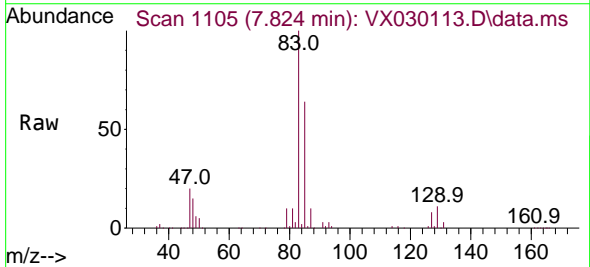
Instrument : MSVOA\_X  
 ClientSampleId : VSTD100675

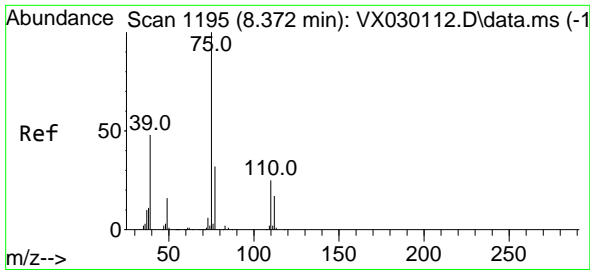
Tgt Ion: 63 Resp: 246450  
 Ion Ratio Lower Upper  
 63 100  
 112 3.6 3.1 4.7



#38  
 Bromodichloromethane  
 Concen: 104.973 ug/L  
 RT: 7.824 min Scan# 1105  
 Delta R.T. -0.000 min  
 Lab File: VX030113.D  
 Acq: 19 Jul 2022 12:54

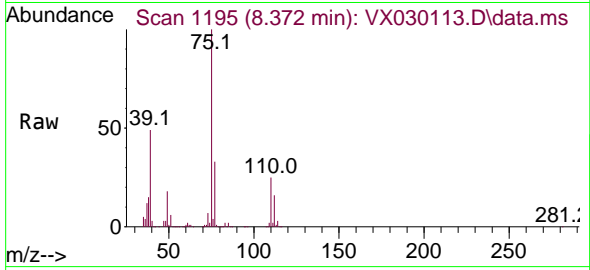
Tgt Ion: 83 Resp: 306257  
 Ion Ratio Lower Upper  
 83 100  
 85 63.8 44.0 81.8  
 127 8.2 7.0 10.6



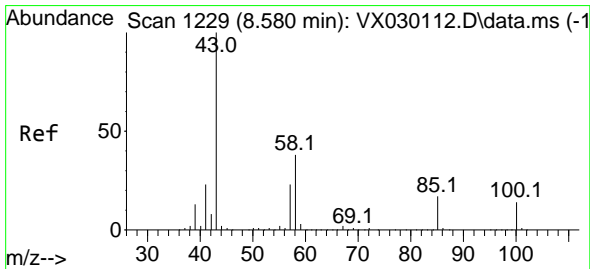
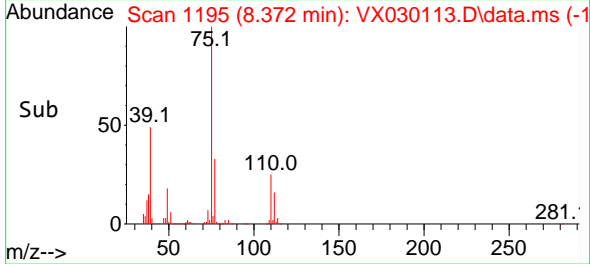
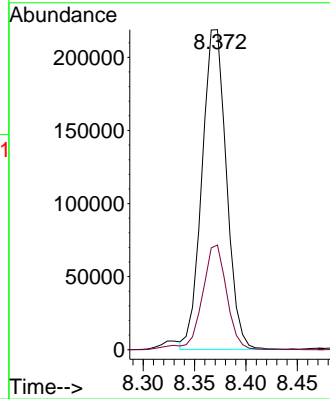


#39  
 cis-1,3-Dichloropropene  
 Concen: 106.285 ug/L  
 RT: 8.372 min Scan# 1195  
 Delta R.T. -0.000 min  
 Lab File: VX030113.D  
 Acq: 19 Jul 2022 12:54

Instrument : MSVOA\_X  
 ClientSampleId : VSTD100675

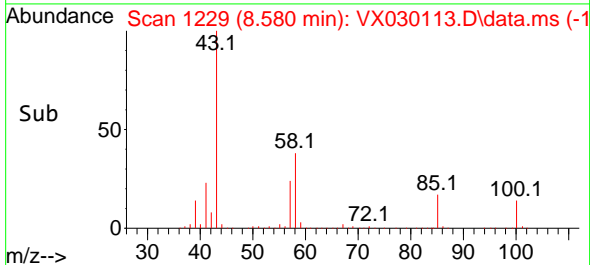
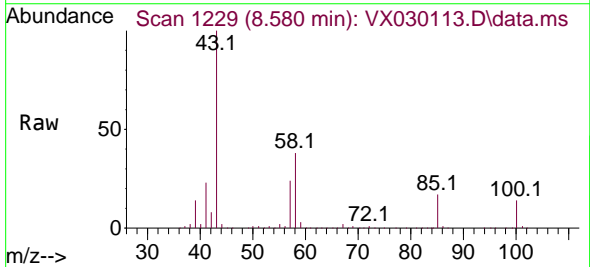
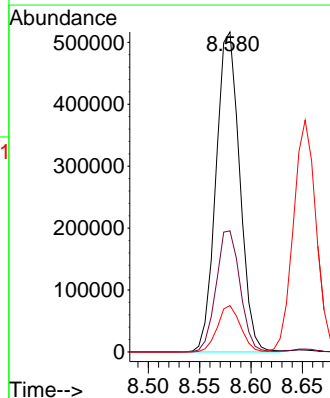


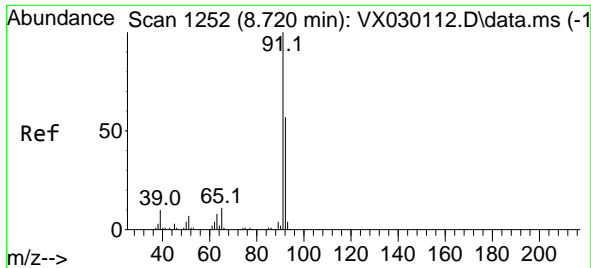
Tgt Ion: 75 Resp: 362284  
 Ion Ratio Lower Upper  
 75 100  
 77 32.7 22.3 41.5



#40  
 4-Methyl-2-pentanone  
 Concen: 213.971 ug/L  
 RT: 8.580 min Scan# 1229  
 Delta R.T. -0.000 min  
 Lab File: VX030113.D  
 Acq: 19 Jul 2022 12:54

Tgt Ion: 43 Resp: 829951  
 Ion Ratio Lower Upper  
 43 100  
 58 38.3 30.9 46.3  
 100 14.2 11.5 17.3

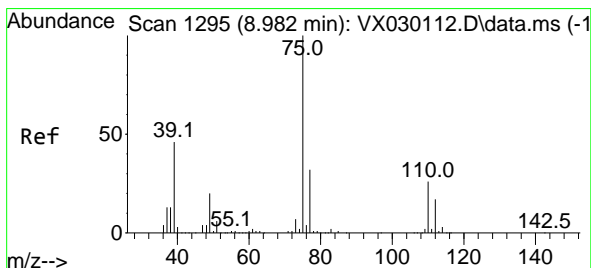
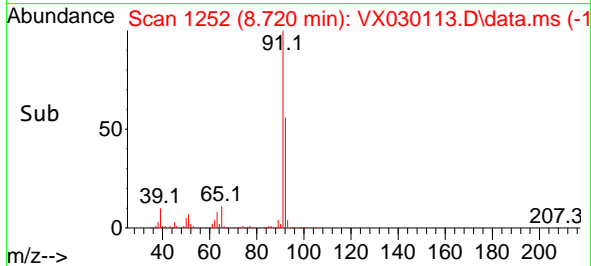
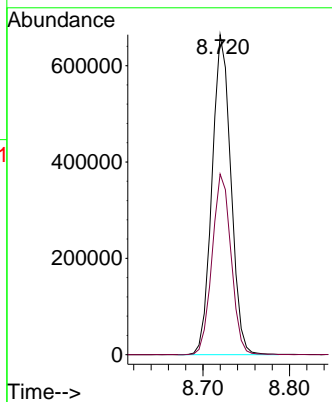
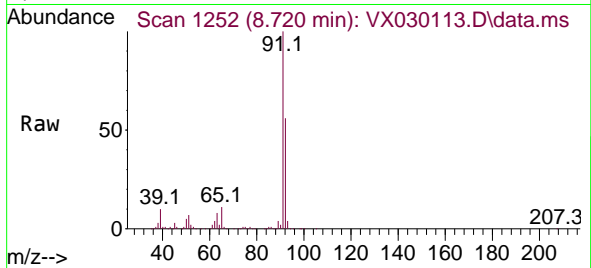




#42  
 Toluene  
 Concen: 106.178 ug/L  
 RT: 8.720 min Scan# 1252  
 Delta R.T. -0.000 min  
 Lab File: VX030113.D  
 Acq: 19 Jul 2022 12:54

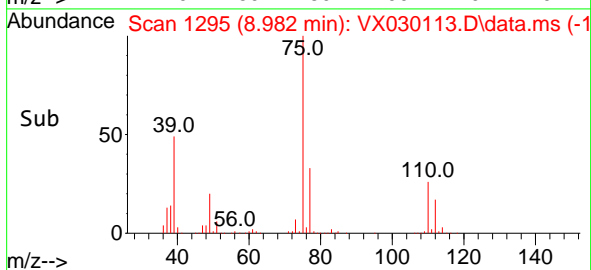
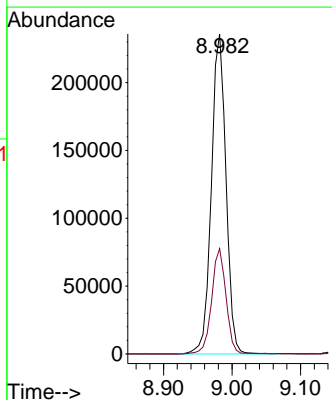
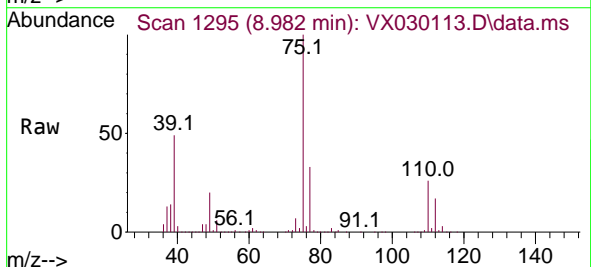
Instrument : MSVOA\_X  
 ClientSampleId : VSTD100675

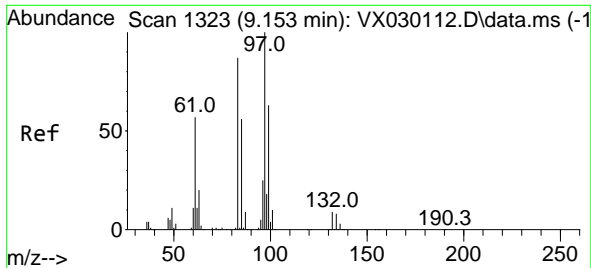
Tgt Ion: 91 Resp: 1004450  
 Ion Ratio Lower Upper  
 91 100  
 92 56.5 39.6 73.6



#44  
 trans-1,3-Dichloropropene  
 Concen: 109.341 ug/L  
 RT: 8.982 min Scan# 1295  
 Delta R.T. -0.000 min  
 Lab File: VX030113.D  
 Acq: 19 Jul 2022 12:54

Tgt Ion: 75 Resp: 349031  
 Ion Ratio Lower Upper  
 75 100  
 77 32.9 22.2 41.2





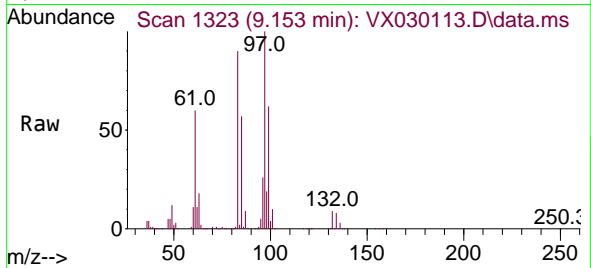
#45  
 1,1,2-Trichloroethane  
 Concen: 103.903 ug/L  
 RT: 9.153 min Scan# 1323  
 Delta R.T. -0.000 min  
 Lab File: VX030113.D  
 Acq: 19 Jul 2022 12:54

Instrument :

MSVOA\_X

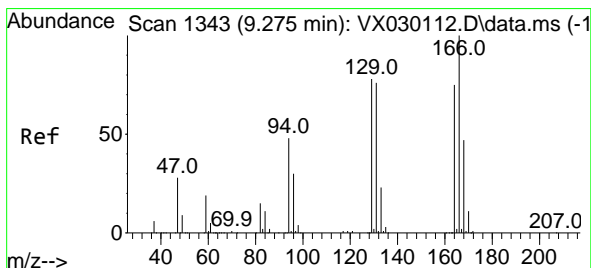
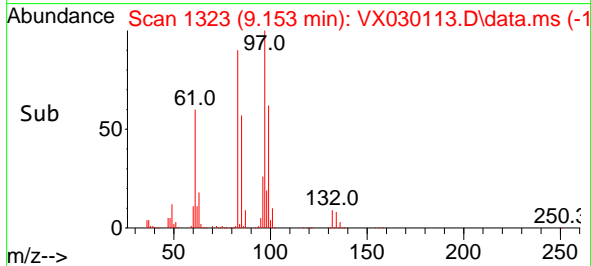
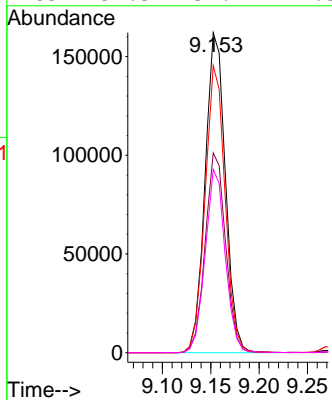
ClientSampleId :

VSTD100675

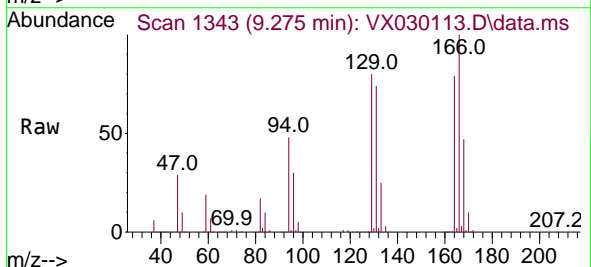


Tgt Ion: 97 Resp: 237099

Ion	Ratio	Lower	Upper
97	100		
99	62.4	43.8	81.4
83	89.7	61.2	113.8
85	57.3	39.1	72.5

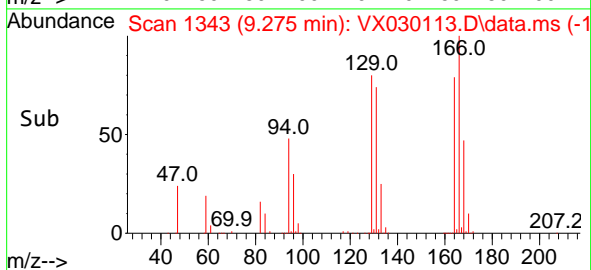
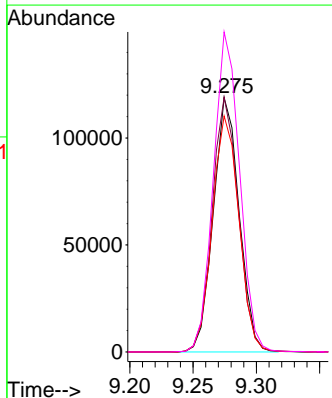


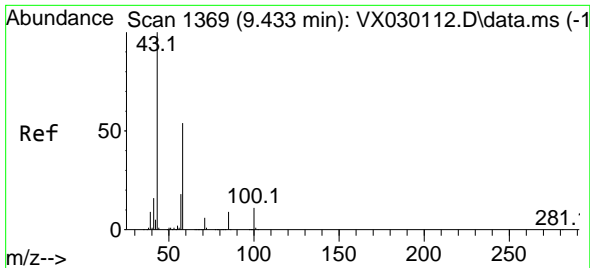
#46  
 Tetrachloroethene  
 Concen: 99.984 ug/L  
 RT: 9.275 min Scan# 1343  
 Delta R.T. -0.000 min  
 Lab File: VX030113.D  
 Acq: 19 Jul 2022 12:54



Tgt Ion: 164 Resp: 169028

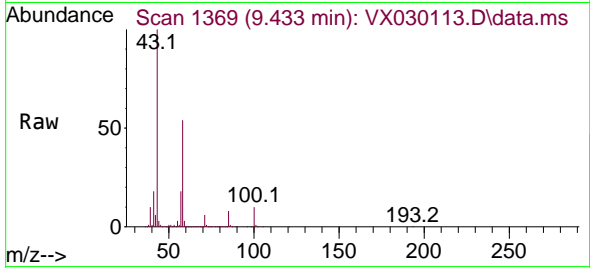
Ion	Ratio	Lower	Upper
164	100		
129	100.1	73.0	135.6
131	92.8	70.7	131.3
166	125.8	93.2	173.0





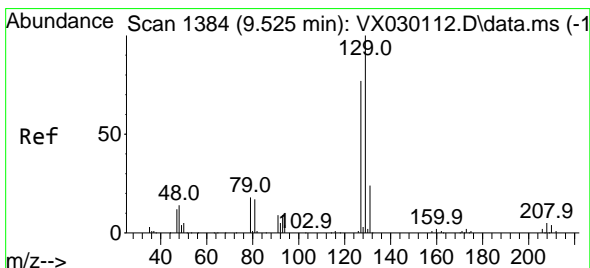
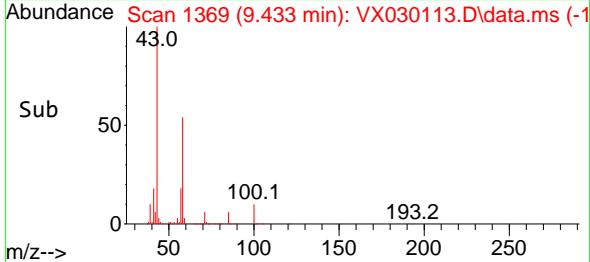
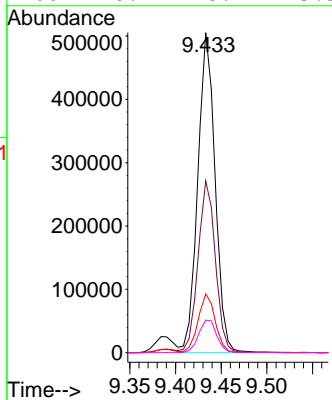
#48  
 2-Hexanone  
 Concen: 213.722 ug/L  
 RT: 9.433 min Scan# 1369  
 Delta R.T. -0.000 min  
 Lab File: VX030113.D  
 Acq: 19 Jul 2022 12:54

Instrument : MSVOA\_X  
 ClientSampleId : VSTD100675



Tgt Ion: 43 Resp: 665702

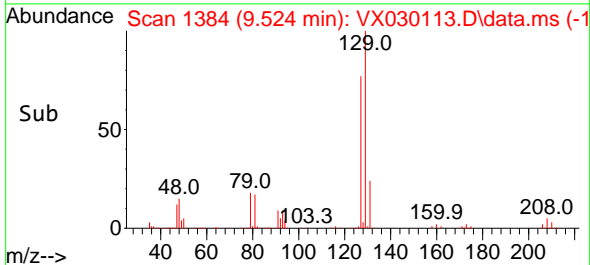
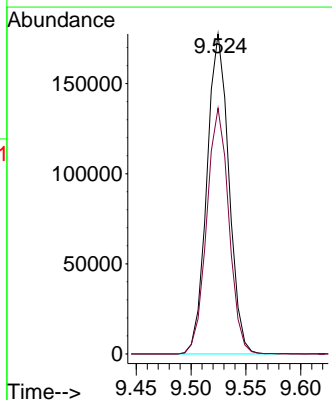
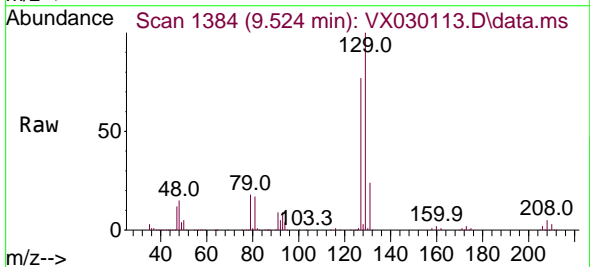
Ion	Ratio	Lower	Upper
43	100		
58	53.1	43.4	65.2
57	18.3	14.3	21.5
100	10.7	8.9	13.3

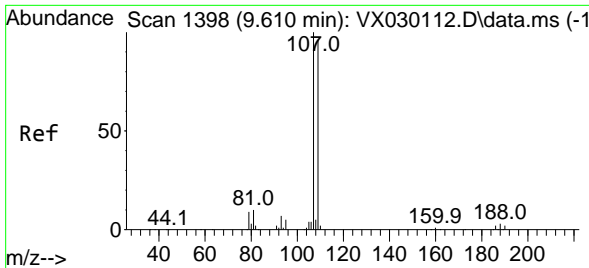


#49  
 Dibromochloromethane  
 Concen: 108.538 ug/L  
 RT: 9.524 min Scan# 1384  
 Delta R.T. -0.000 min  
 Lab File: VX030113.D  
 Acq: 19 Jul 2022 12:54

Tgt Ion: 129 Resp: 247824

Ion	Ratio	Lower	Upper
129	100		
127	76.8	53.6	99.6



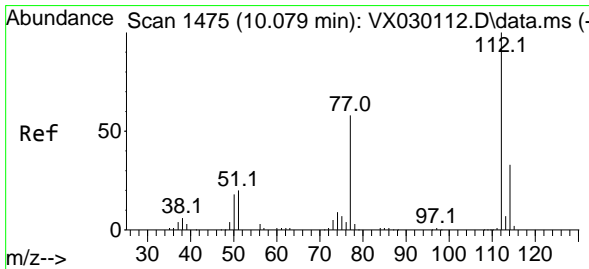
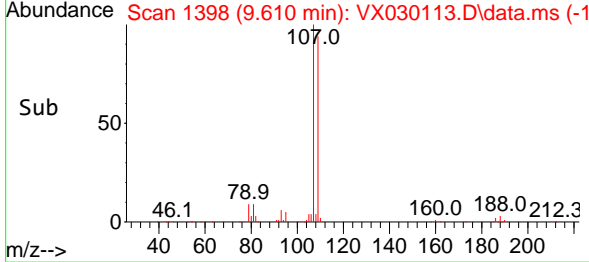
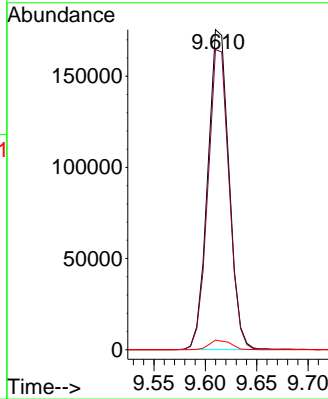
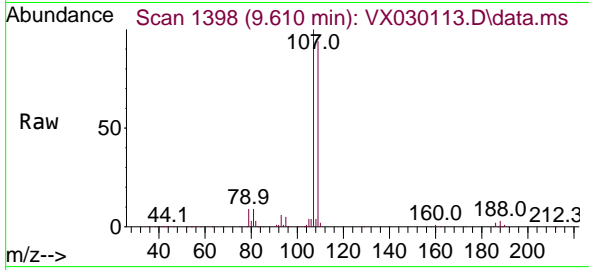


#50  
 1,2-Dibromoethane  
 Concen: 104.186 ug/L  
 RT: 9.610 min Scan# 11  
 Delta R.T. -0.000 min  
 Lab File: VX030113.D  
 Acq: 19 Jul 2022 12:54

Instrument :  
 MSVOA\_X  
 ClientSampleId :  
 VSTD100675

Tgt Ion:107 Resp: 252462

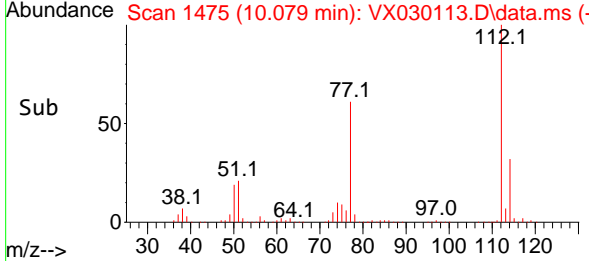
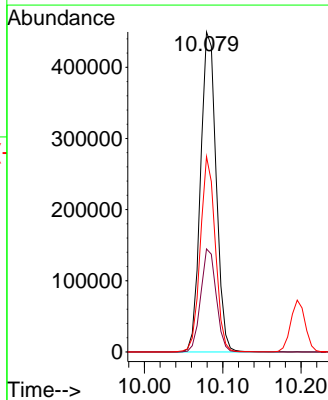
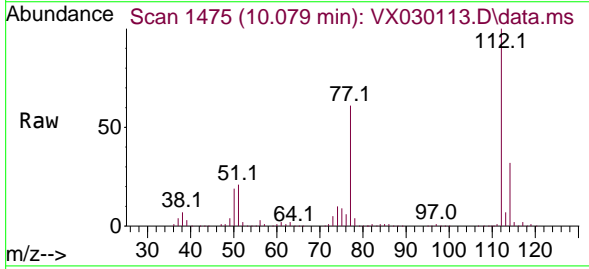
Ion	Ratio	Lower	Upper
107	100		
109	93.7	66.9	124.3
188	3.0	2.4	3.6

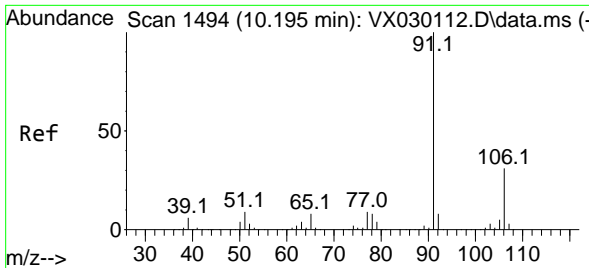


#51  
 Chlorobenzene  
 Concen: 104.472 ug/L  
 RT: 10.079 min Scan# 1475  
 Delta R.T. -0.000 min  
 Lab File: VX030113.D  
 Acq: 19 Jul 2022 12:54

Tgt Ion:112 Resp: 620980

Ion	Ratio	Lower	Upper
112	100		
114	32.2	23.4	43.4
77	61.0	46.7	70.1

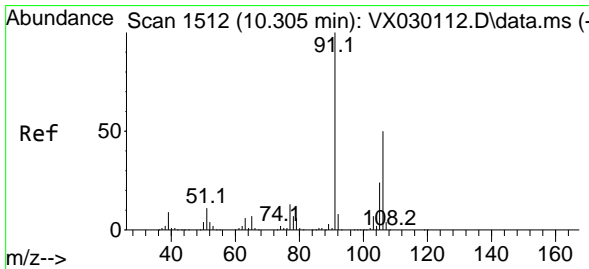
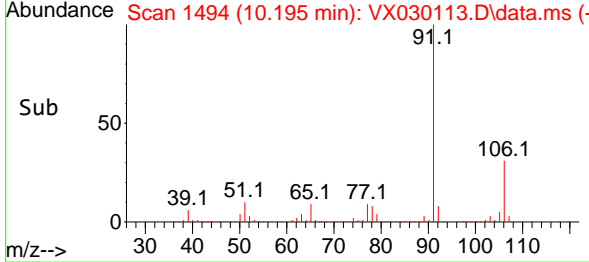
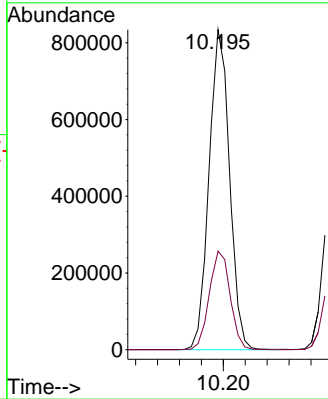
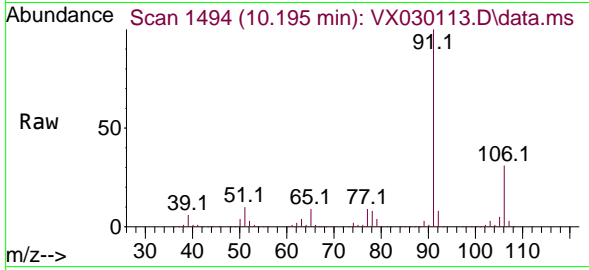




#52  
 Ethylbenzene  
 Concen: 107.413 ug/L  
 RT: 10.195 min Scan# 1494  
 Delta R.T. -0.000 min  
 Lab File: VX030113.D  
 Acq: 19 Jul 2022 12:54

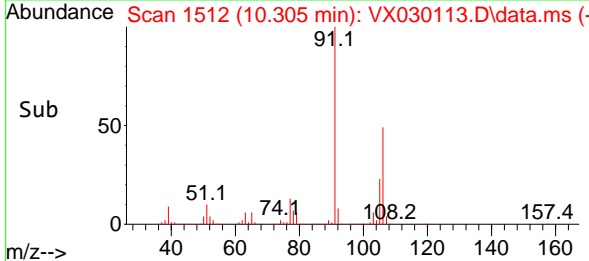
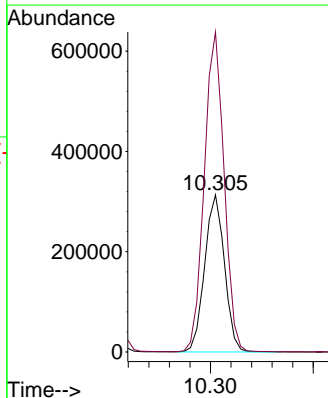
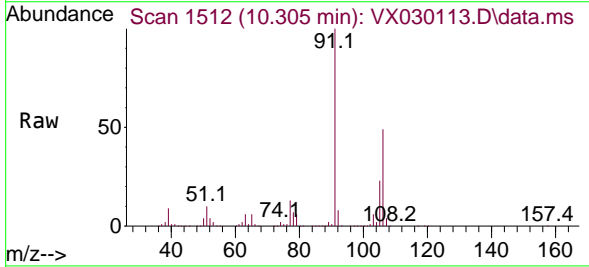
Instrument : MSVOA\_X  
 ClientSampleId : VSTD100675

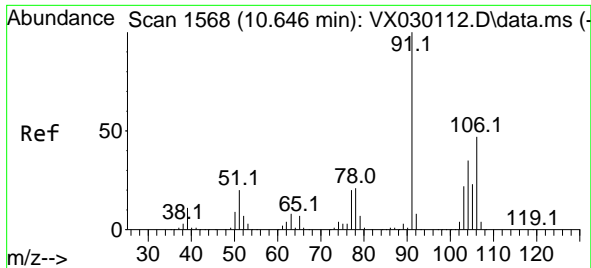
Tgt Ion: 91 Resp: 1083062  
 Ion Ratio Lower Upper  
 91 100  
 106 30.8 21.7 40.3



#53  
 m,p-Xylene  
 Concen: 106.598 ug/L  
 RT: 10.305 min Scan# 1512  
 Delta R.T. -0.000 min  
 Lab File: VX030113.D  
 Acq: 19 Jul 2022 12:54

Tgt Ion: 106 Resp: 418986  
 Ion Ratio Lower Upper  
 106 100  
 91 203.6 139.7 259.5

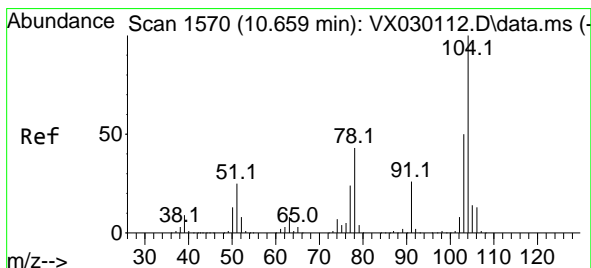
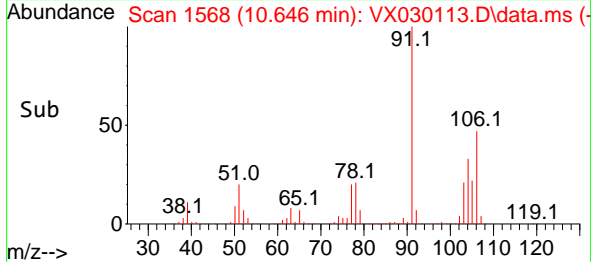
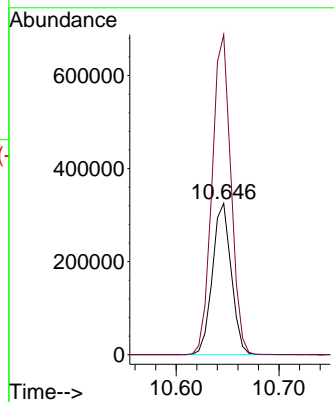
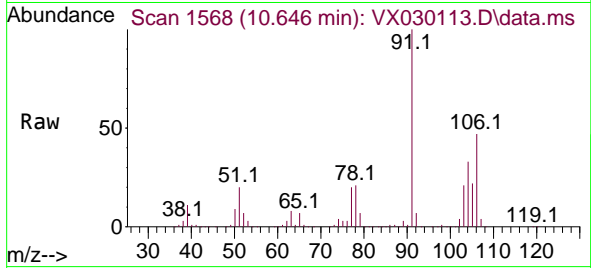




#54  
 o-Xylene  
 Concen: 108.165 ug/L  
 RT: 10.646 min Scan# 1568  
 Delta R.T. -0.000 min  
 Lab File: VX030113.D  
 Acq: 19 Jul 2022 12:54

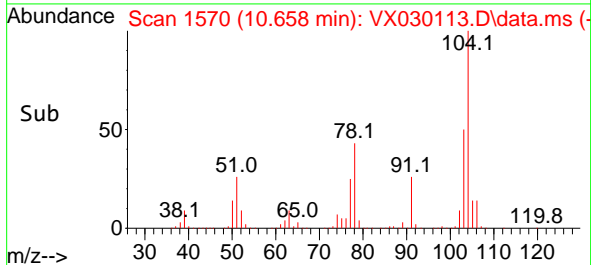
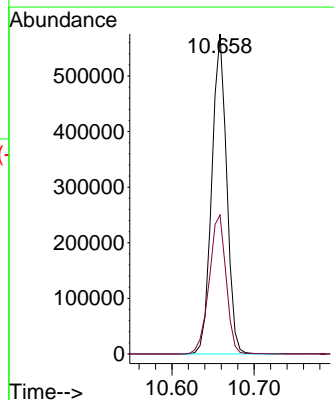
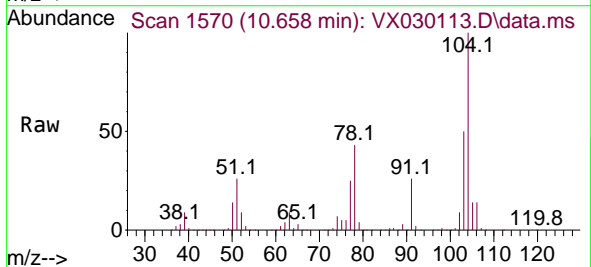
Instrument : MSVOA\_X  
 ClientSampleId : VSTD100675

Tgt Ion:106 Resp: 412845  
 Ion Ratio Lower Upper  
 106 100  
 91 211.4 149.4 277.4

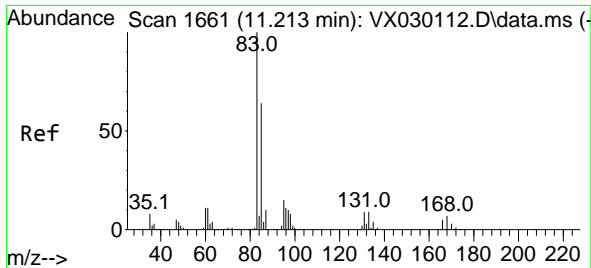


#55  
 Styrene  
 Concen: 109.911 ug/L  
 RT: 10.658 min Scan# 1570  
 Delta R.T. -0.000 min  
 Lab File: VX030113.D  
 Acq: 19 Jul 2022 12:54

Tgt Ion:104 Resp: 722693  
 Ion Ratio Lower Upper  
 104 100  
 78 43.4 30.3 56.3





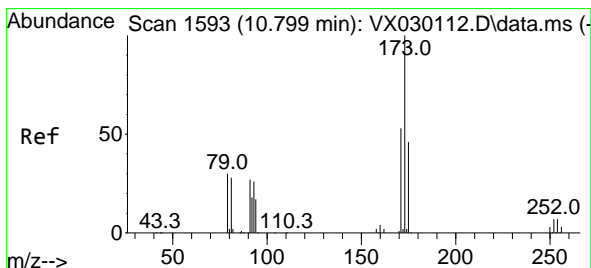
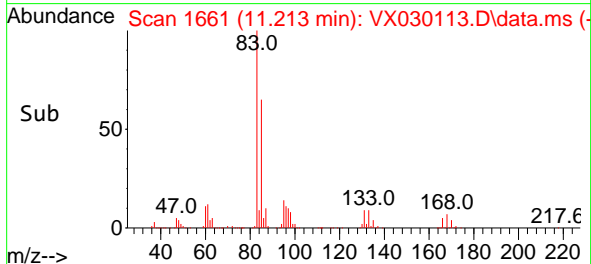
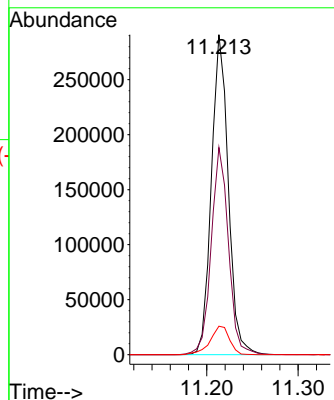
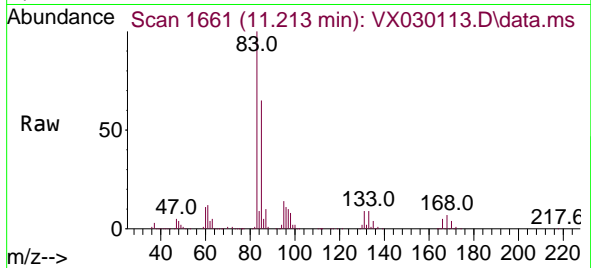


#57  
 1,1,2-Tetrachloroethane  
 Concen: 103.379 ug/L  
 RT: 11.213 min Scan# 1661  
 Delta R.T. -0.000 min  
 Lab File: VX030113.D  
 Acq: 19 Jul 2022 12:54

Instrument : MSVOA\_X  
 ClientSampleId : VSTD100675

Tgt Ion: 83 Resp: 372277

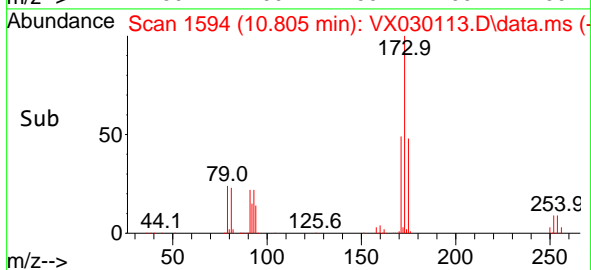
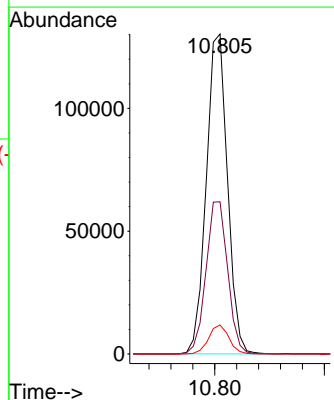
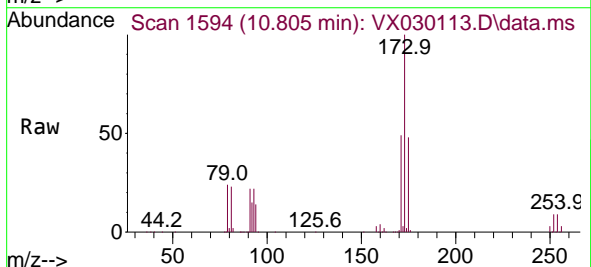
Ion	Ratio	Lower	Upper
83	100		
85	64.7	44.7	83.1
131	8.9	7.2	10.8

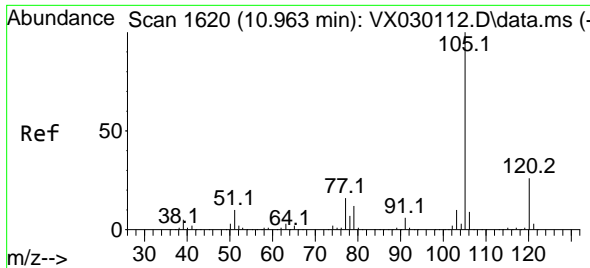


#59  
 Bromoform  
 Concen: 105.959 ug/L  
 RT: 10.805 min Scan# 1594  
 Delta R.T. 0.006 min  
 Lab File: VX030113.D  
 Acq: 19 Jul 2022 12:54

Tgt Ion: 173 Resp: 174705

Ion	Ratio	Lower	Upper
173	100		
175	48.8	37.8	56.6
254	8.7	6.4	9.6



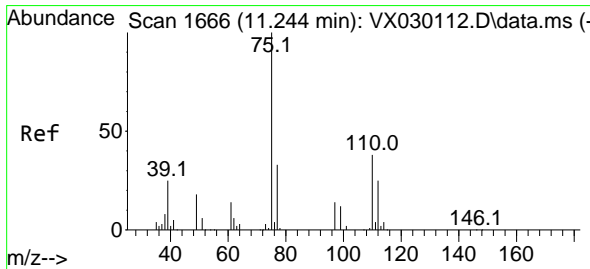
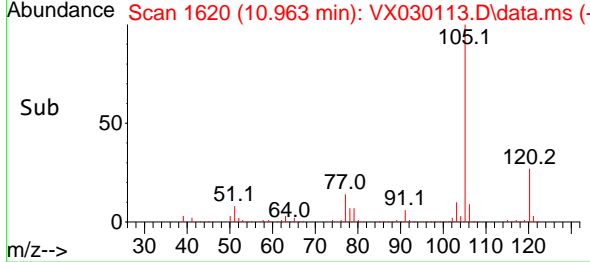
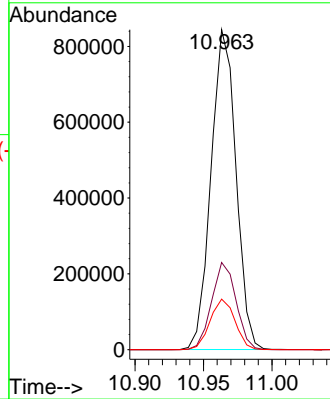
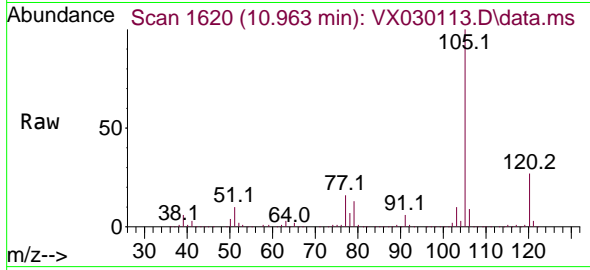


#60  
 Isopropylbenzene  
 Concen: 103.215 ug/L  
 RT: 10.963 min Scan# 1620  
 Delta R.T. -0.000 min  
 Lab File: VX030113.D  
 Acq: 19 Jul 2022 12:54

Instrument : MSVOA\_X  
 ClientSampleId : VSTD100675

Tgt Ion:105 Resp: 1067920

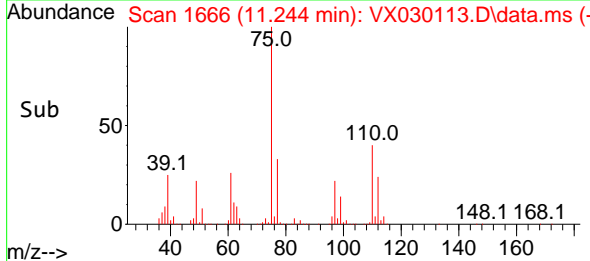
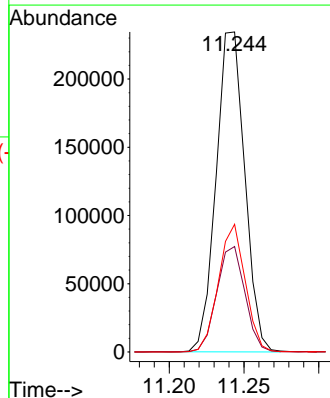
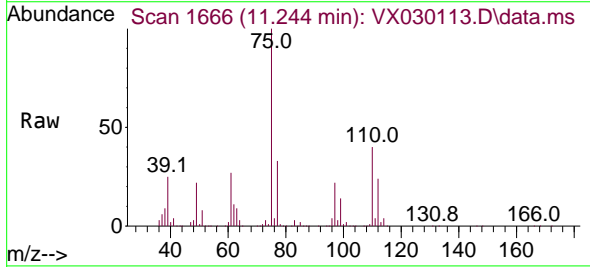
Ion	Ratio	Lower	Upper
105	100		
120	26.7	21.1	31.7
77	15.8	12.4	18.6

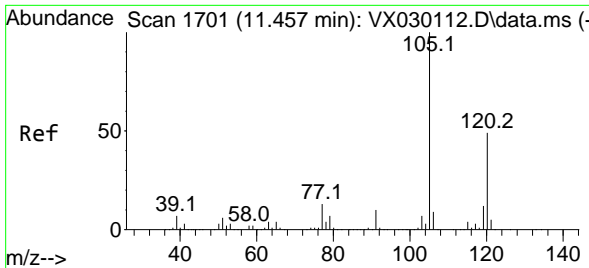


#61  
 1,2,3-Trichloropropane  
 Concen: 100.080 ug/L  
 RT: 11.244 min Scan# 1666  
 Delta R.T. -0.000 min  
 Lab File: VX030113.D  
 Acq: 19 Jul 2022 12:54

Tgt Ion: 75 Resp: 313388

Ion	Ratio	Lower	Upper
75	100		
77	32.3	25.8	38.8
110	37.3	30.2	45.2

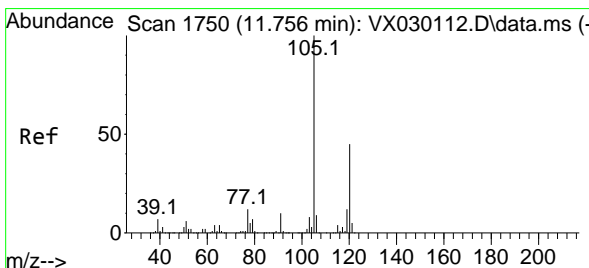
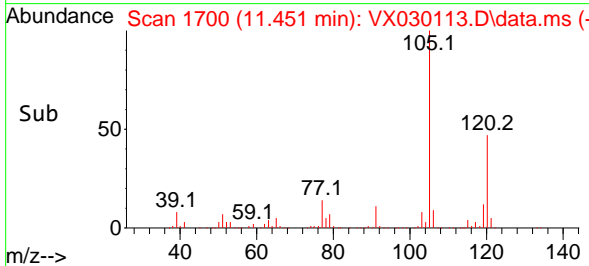
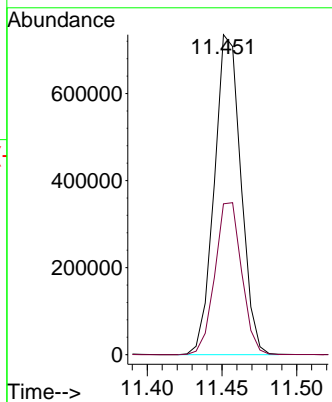
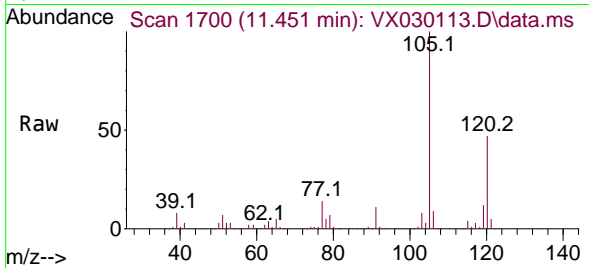




#62  
 1,3,5-Trimethylbenzene  
 Concen: 106.256 ug/L  
 RT: 11.451 min Scan# 1700  
 Delta R.T. -0.006 min  
 Lab File: VX030113.D  
 Acq: 19 Jul 2022 12:54

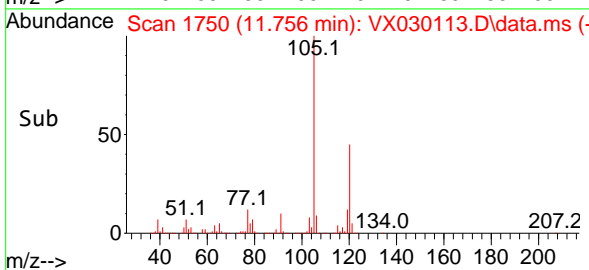
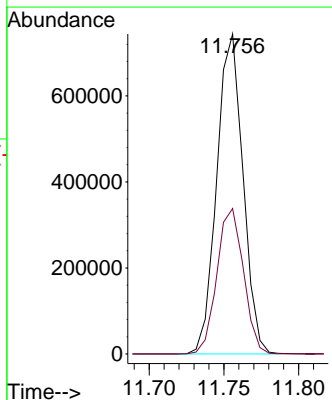
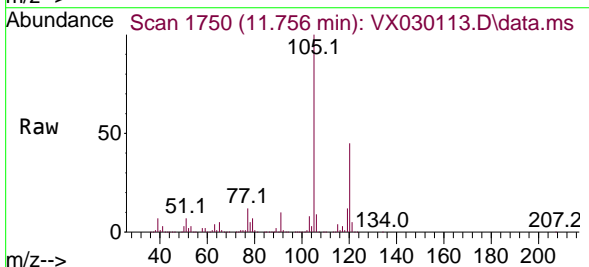
Instrument : MSVOA\_X  
 ClientSampleId : VSTD100675

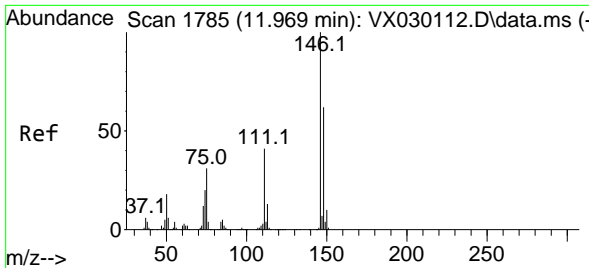
Tgt Ion:105 Resp: 908447  
 Ion Ratio Lower Upper  
 105 100  
 120 47.9 38.8 58.2



#63  
 1,2,4-Trimethylbenzene  
 Concen: 106.444 ug/L  
 RT: 11.756 min Scan# 1750  
 Delta R.T. -0.000 min  
 Lab File: VX030113.D  
 Acq: 19 Jul 2022 12:54

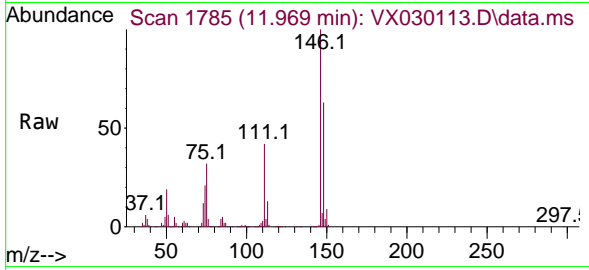
Tgt Ion:105 Resp: 907385  
 Ion Ratio Lower Upper  
 105 100  
 120 46.0 36.2 54.4



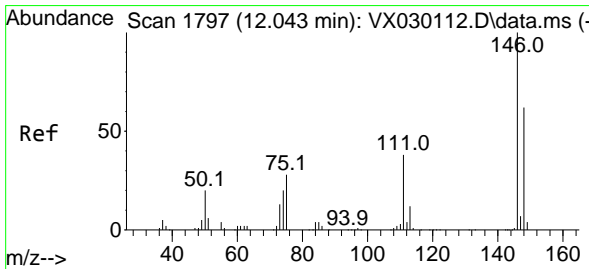
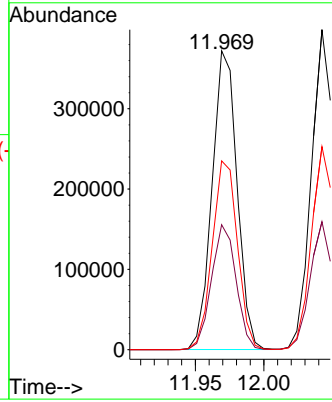
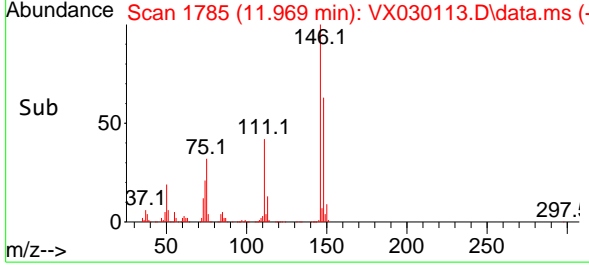


#64  
 1,3-Dichlorobenzene  
 Concen: 103.563 ug/L  
 RT: 11.969 min Scan# 1785  
 Delta R.T. -0.000 min  
 Lab File: VX030113.D  
 Acq: 19 Jul 2022 12:54

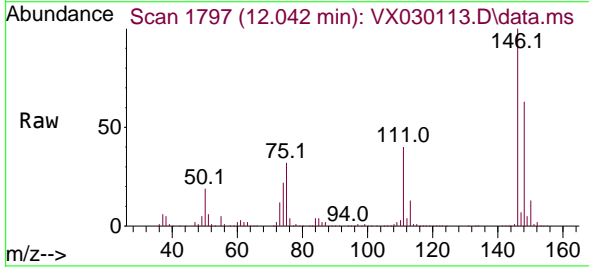
Instrument : MSVOA\_X  
 ClientSampleId : VSTD100675



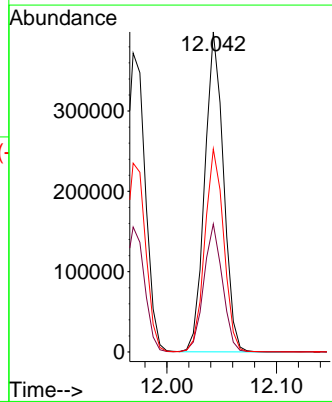
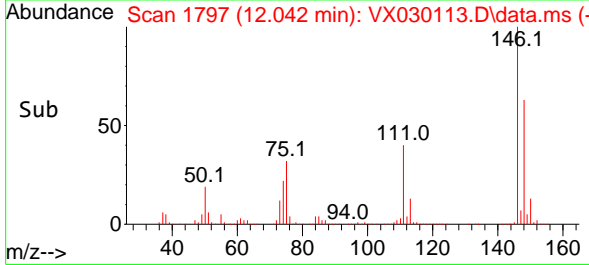
Tgt Ion:146 Resp: 471322  
 Ion Ratio Lower Upper  
 146 100  
 111 41.8 28.4 52.8  
 148 63.2 43.6 81.0

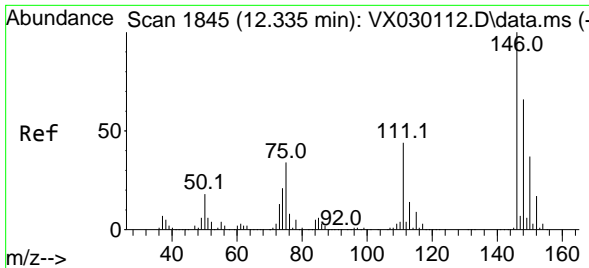


#65  
 1,4-Dichlorobenzene  
 Concen: 103.412 ug/L  
 RT: 12.042 min Scan# 1797  
 Delta R.T. -0.000 min  
 Lab File: VX030113.D  
 Acq: 19 Jul 2022 12:54



Tgt Ion:146 Resp: 473149  
 Ion Ratio Lower Upper  
 146 100  
 111 40.0 27.0 50.2  
 148 63.5 43.8 81.3



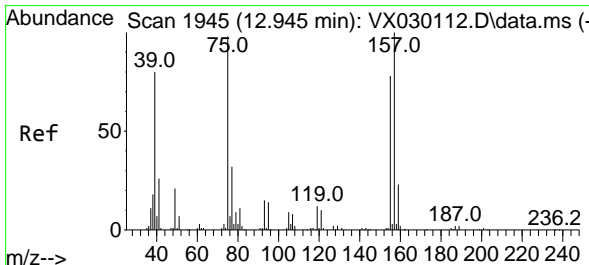
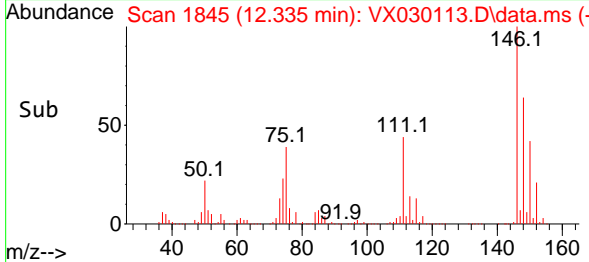
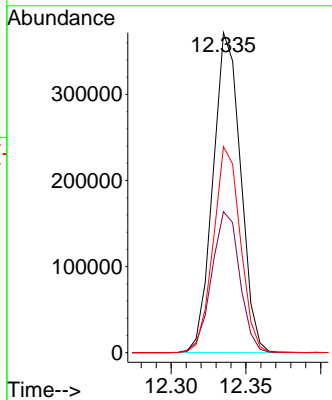
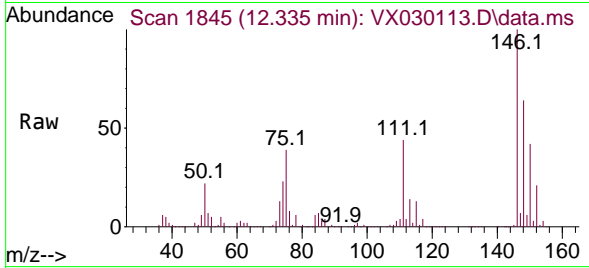


#67  
 1,2-Dichlorobenzene  
 Concen: 102.963 ug/L  
 RT: 12.335 min Scan# 1845  
 Delta R.T. -0.000 min  
 Lab File: VX030113.D  
 Acq: 19 Jul 2022 12:54

Instrument : MSVOA\_X  
 ClientSampleId : VSTD100675

Tgt Ion:146 Resp: 476696

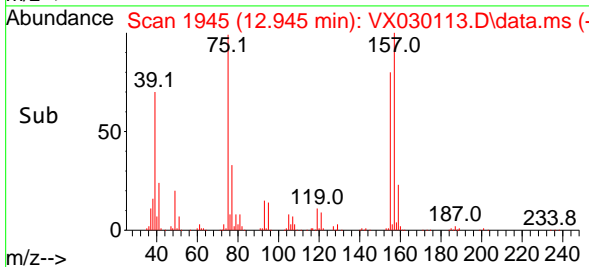
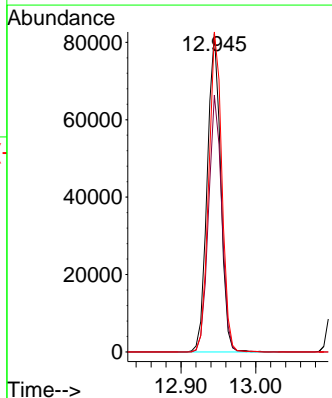
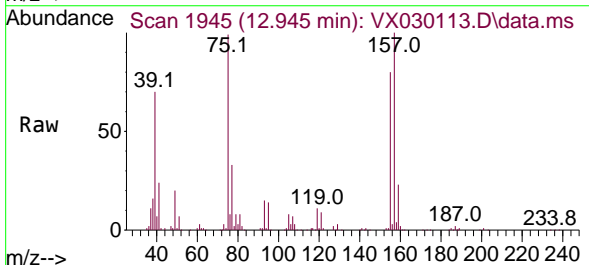
Ion	Ratio	Lower	Upper
146	100		
111	44.1	35.4	53.0
148	64.4	52.5	78.7

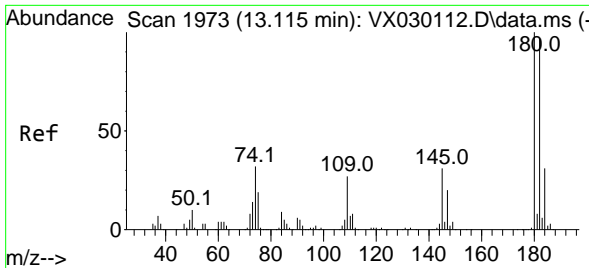


#68  
 1,2-Dibromo-3-chloropropane  
 Concen: 108.336 ug/L  
 RT: 12.945 min Scan# 1945  
 Delta R.T. -0.000 min  
 Lab File: VX030113.D  
 Acq: 19 Jul 2022 12:54

Tgt Ion: 75 Resp: 101880

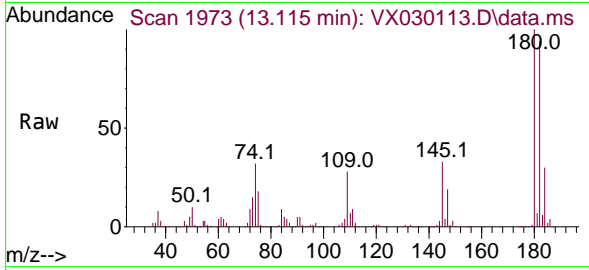
Ion	Ratio	Lower	Upper
75	100		
155	80.7	63.6	95.4
157	100.5	81.8	122.8





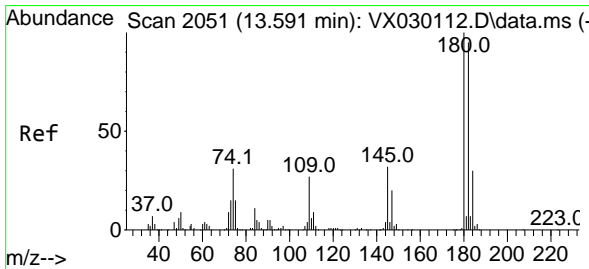
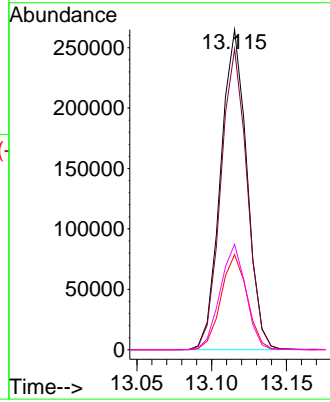
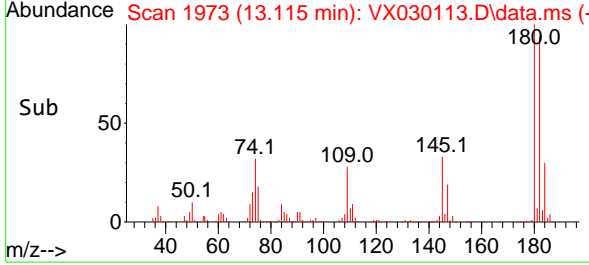
#69  
 1,3,5-Trichlorobenzene  
 Concen: 105.051 ug/L  
 RT: 13.115 min Scan# 1973  
 Delta R.T. -0.000 min  
 Lab File: VX030113.D  
 Acq: 19 Jul 2022 12:54

Instrument : MSVOA\_X  
 Client Sample Id : VSTD100675

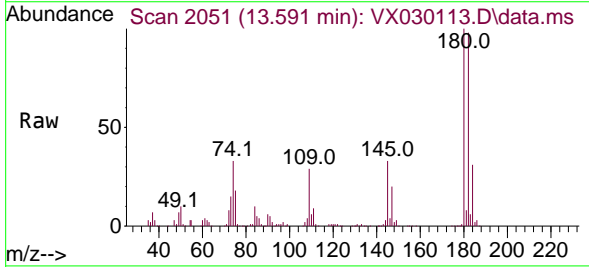


Tgt Ion:180 Resp: 322814

Ion	Ratio	Lower	Upper
180	100		
182	93.9	75.1	112.7
184	29.7	23.8	35.6
145	32.2	25.1	37.7

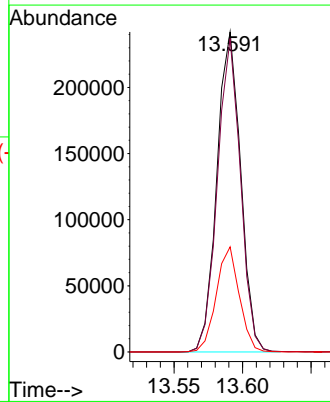
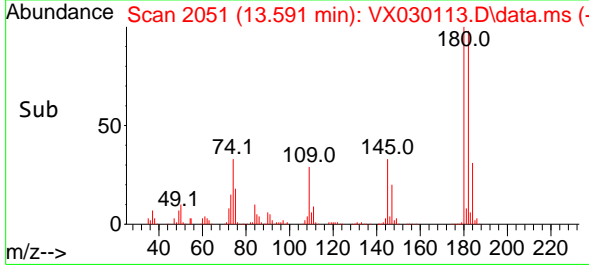


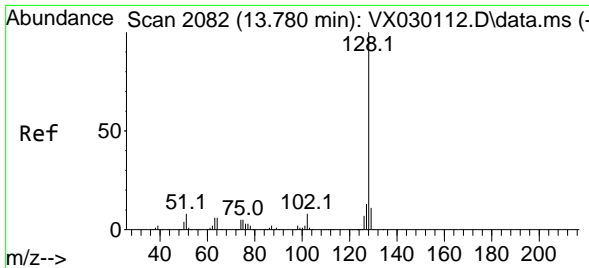
#70  
 1,2,4-trichlorobenzene  
 Concen: 108.127 ug/L  
 RT: 13.591 min Scan# 2051  
 Delta R.T. -0.000 min  
 Lab File: VX030113.D  
 Acq: 19 Jul 2022 12:54



Tgt Ion:180 Resp: 291639

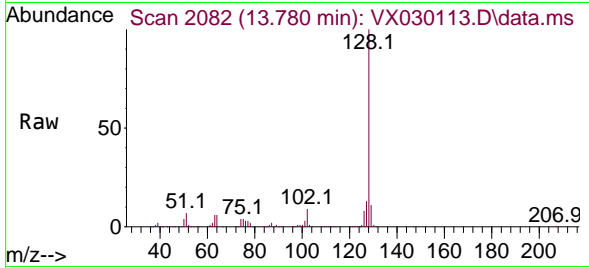
Ion	Ratio	Lower	Upper
180	100		
182	94.8	75.2	112.8
145	31.9	26.2	39.2





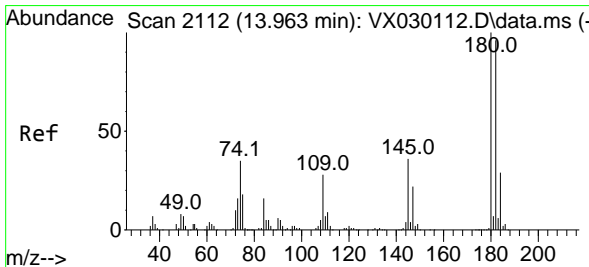
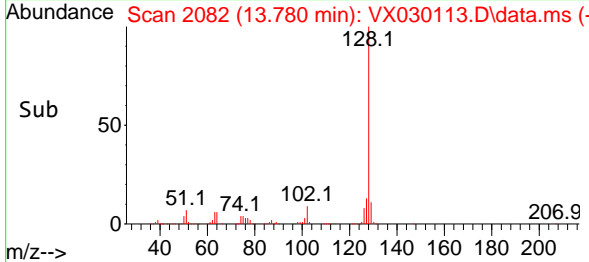
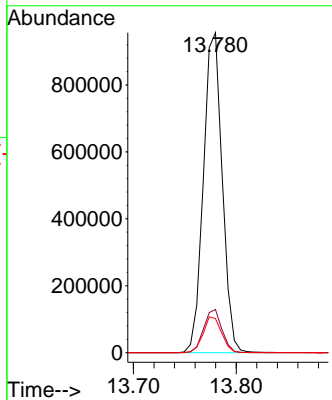
#71  
 Naphthalene  
 Concen: 110.364 ug/L  
 RT: 13.780 min Scan# 2082  
 Delta R.T. -0.000 min  
 Lab File: VX030113.D  
 Acq: 19 Jul 2022 12:54

Instrument : MSVOA\_X  
 ClientSampleId : VSTD100675



Tgt Ion:128 Resp: 1217805

Ion	Ratio	Lower	Upper
128	100		
127	13.1	10.3	15.5
129	11.0	8.7	13.1



#72  
 1,2,3-Trichlorobenzene  
 Concen: 105.381 ug/L  
 RT: 13.963 min Scan# 2112  
 Delta R.T. -0.000 min  
 Lab File: VX030113.D  
 Acq: 19 Jul 2022 12:54

Tgt Ion:180 Resp: 301978

Ion	Ratio	Lower	Upper
180	100		
182	94.5	75.9	113.9
145	35.0	28.0	42.0

