

Data Path : Z:\VOASRV\HPCHEM1\MSVOA X\DATA\VX072019\  
 Data File : VX011000.D  
 Acq On : 19 Jul 2019 14:18  
 Operator : JC/SP  
 Sample : K3917-04  
 Misc : 5.0mL/MSVOA X/WATER  
 ALS Vial : 11 Sample Multiplier: 1

Instrument :  
 MSVOA\_X  
 ClientSampleId :  
 STORAGE-BLANK-SAMPLE-MANA

Quant Time: Jul 20 01:00:58 2019  
 Quant Method : Z:\VOASRV\HPCHEM1\MSVOA\_X\METHOD\82X071619W.M  
 Quant Title : SW846 8260  
 QLast Update : Wed Jul 17 06:57:45 2019  
 Response via : Initial Calibration

Internal Standards	R.T.	QIon	Response	Conc	Units	Dev(Min)
1) Pentafluorobenzene	5.66	168	217153	50.00	ug/l	0.00
34) 1,4-Difluorobenzene	6.86	114	343759	50.00	ug/l	0.00
63) Chlorobenzene-d5	10.11	117	322145	50.00	ug/l	0.00
72) 1,4-Dichlorobenzene-d4	12.08	152	149421	50.00	ug/l	0.00

## System Monitoring Compounds

33) 1,2-Dichloroethane-d4	6.06	65	116545	50.45	ug/l	0.00
Spiked Amount				50.000		
			Recovery	=	100.90%	
35) Dibromofluoromethane	5.50	113	106451	48.79	ug/l	0.00
Spiked Amount				50.000		
			Recovery	=	97.58%	
50) Toluene-d8	8.71	98	413031	50.47	ug/l	0.00
Spiked Amount				50.000		
			Recovery	=	100.94%	
62) 4-Bromofluorobenzene	11.13	95	147042	48.88	ug/l	0.00
Spiked Amount				50.000		
			Recovery	=	97.76%	

## Target Compounds

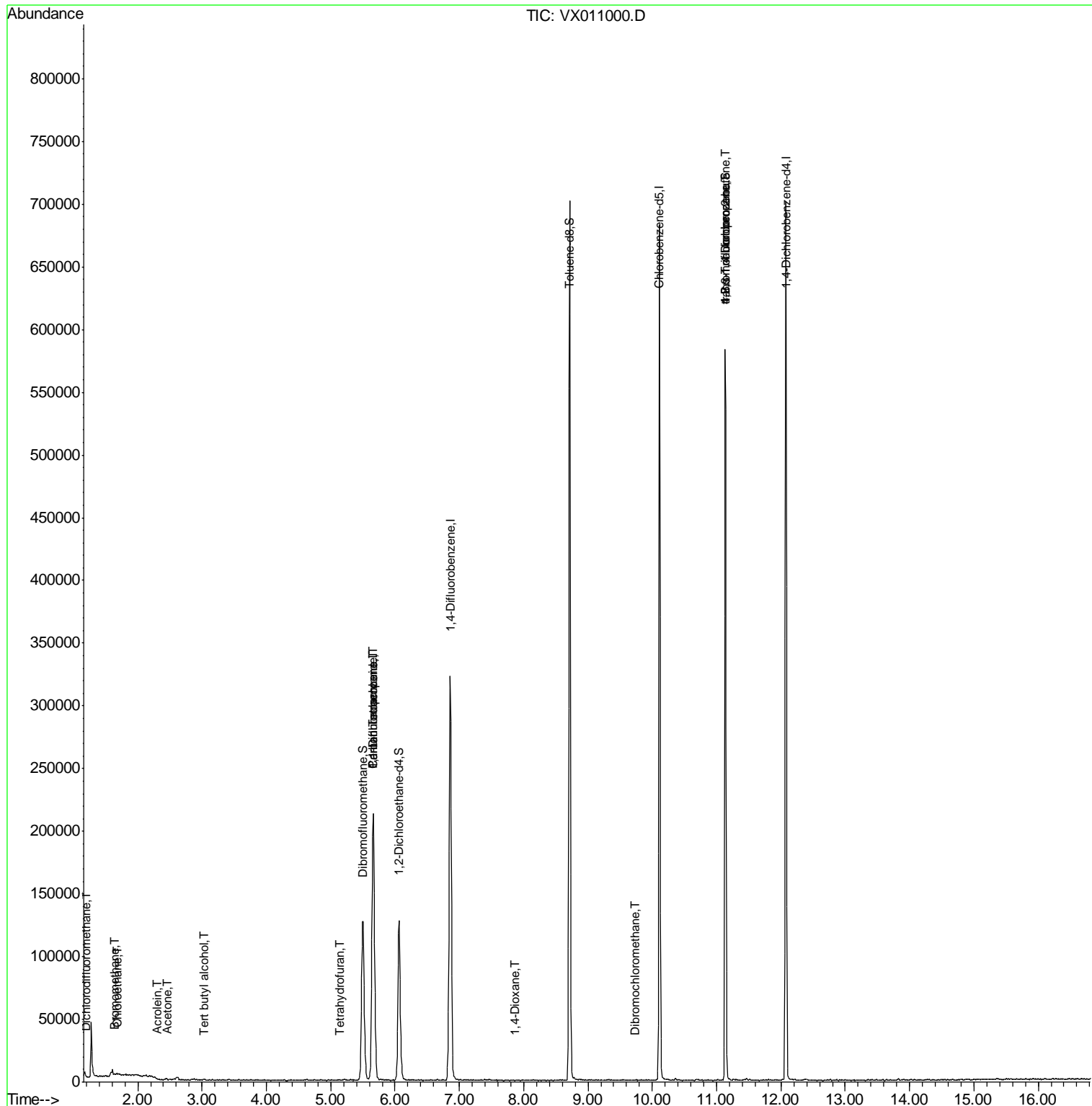
					Qvalue	
2) Dichlorodifluoromethane	1.20	85	35	0.561	ug/l #	43
5) Bromomethane	1.65	94	664	0.578	ug/l	87
6) Chloroethane	1.68	64	567	0.438	ug/l #	80
11) Tert butyl alcohol	3.04	59	653	1.214	ug/l #	91
13) Acrolein	2.30	56	137	0.441	ug/l #	15
16) Acetone	2.45	43	895	0.858	ug/l	94
29) Tetrahydrofuran	5.13	42	239	0.252	ug/l #	35
36) 1,1-Dichloropropene	5.66	75	14700	5.206	ug/l #	49
38) Carbon Tetrachloride	5.66	117	20460	6.954	ug/l #	16
49) 1,4-Dioxane	7.87	88	20	0.309	ug/l #	32
60) Dibromochloromethane	9.73	129	42	2.543	ug/l #	11
76) 1,2,3-Trichloropropane	11.13	75	72785	26.994	ug/l #	35
81) trans-1,4-Dichloro-2-buten	11.13	75	72785	66.926	ug/l #	11

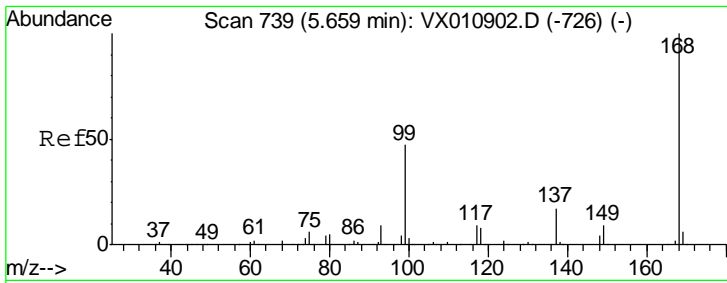
(#) = qualifier out of range (m) = manual integration (+) = signals summed

Data Path : Z:\VOASRV\HPCHEM1\MSVOA X\DATA\VX072019\  
 Data File : VX011000.D  
 Acq On : 19 Jul 2019 14:18  
 Operator : JC/SP  
 Sample : K3917-04  
 Misc : 5.0mL/MSVOA X/WATER  
 ALS Vial : 11 Sample Multiplier: 1

Instrument :  
 MSVOA\_X  
 Client Sample ID :  
 STORAGE-BLANK-SAMPLE-MANA

Quant Time: Jul 20 01:00:58 2019  
 Quant Method : Z:\VOASRV\HPCHEM1\MSVOA\_X\METHOD\82X071619W.M  
 Quant Title : SW846 8260  
 QLast Update : Wed Jul 17 06:57:45 2019  
 Response via : Initial Calibration

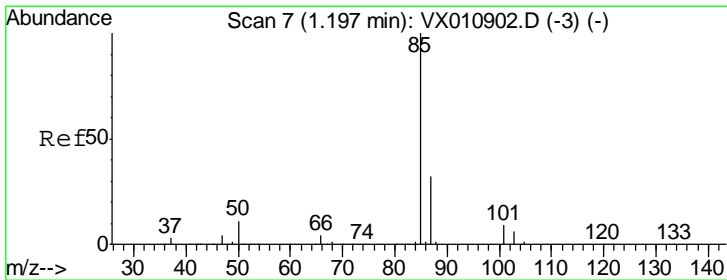
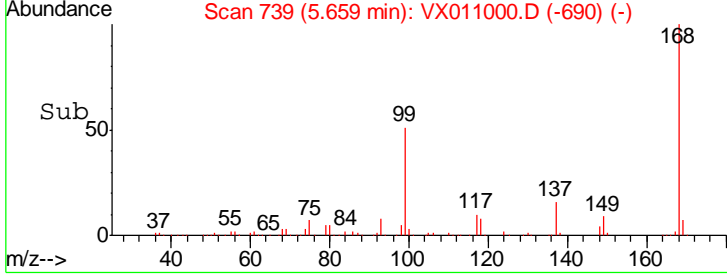
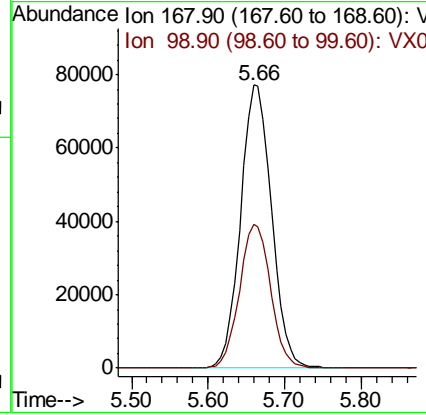
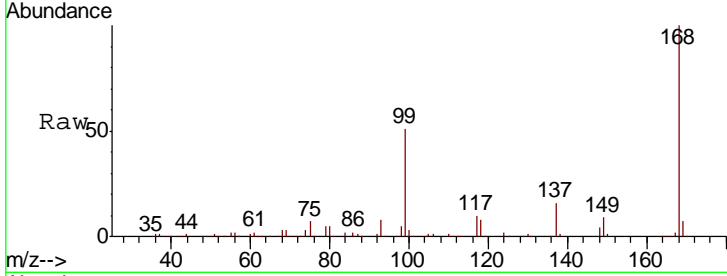




#1  
 Pentafluorobenzene  
 Concen: 50.000 ug/l  
 RT: 5.66 min Scan# 739  
 Delta R.T. 0.00 min  
 Lab File: VX011000.D  
 Acq: 19 Jul 2019 14:18

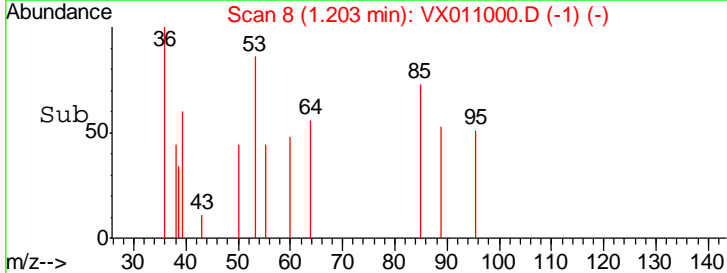
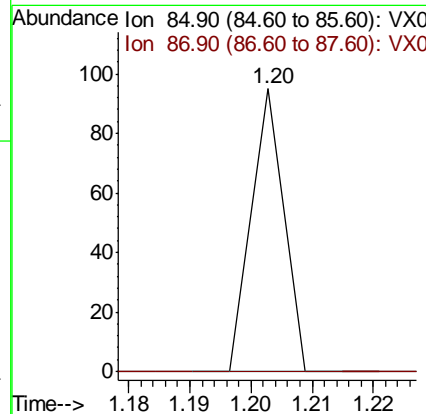
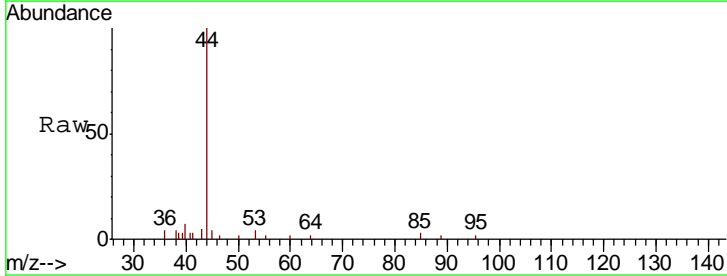
Instrument : MSVOA\_X  
 ClientSampleId : STORAGE-BLANK-SAMPLE-MANA

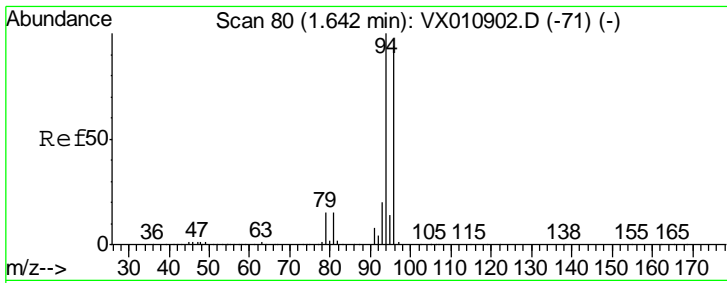
Tgt Ion: 168 Resp: 217153  
 Ion Ratio Lower Upper  
 168 100  
 99 50.6 37.6 56.4



#2  
 Dichlorodifluoromethane  
 Concen: 0.561 ug/l  
 RT: 1.20 min Scan# 8  
 Delta R.T. 0.01 min  
 Lab File: VX011000.D  
 Acq: 19 Jul 2019 14:18

Tgt Ion: 85 Resp: 35  
 Ion Ratio Lower Upper  
 85 100  
 87 0.0 15.9 47.7#

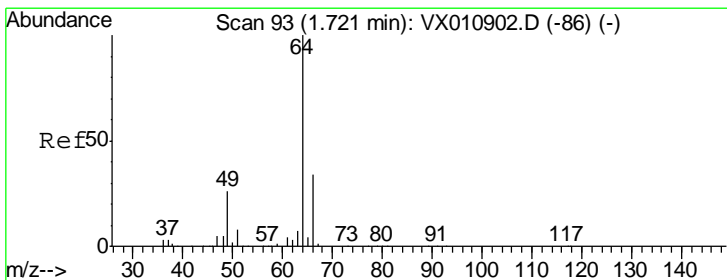
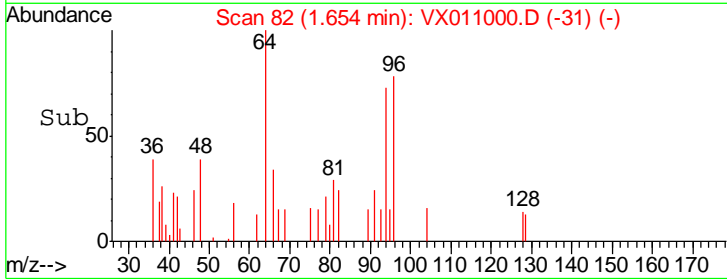
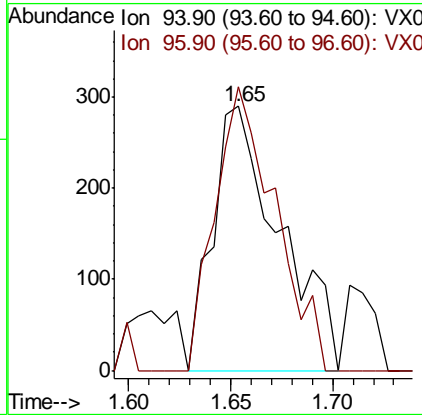
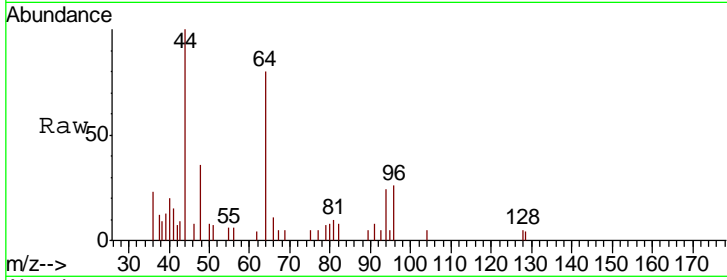




#5  
 Bromomethane  
 Concen: 0.578 ug/l  
 RT: 1.65 min Scan# 82  
 Delta R.T. 0.01 min  
 Lab File: VX011000.D  
 Acq: 19 Jul 2019 14:18

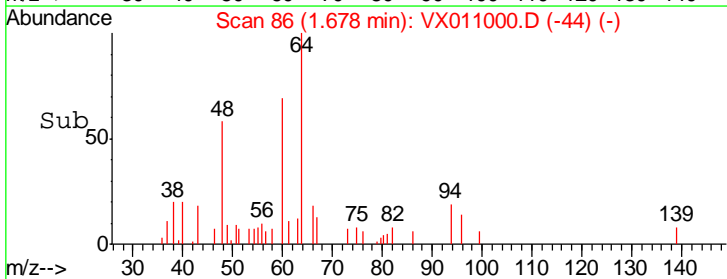
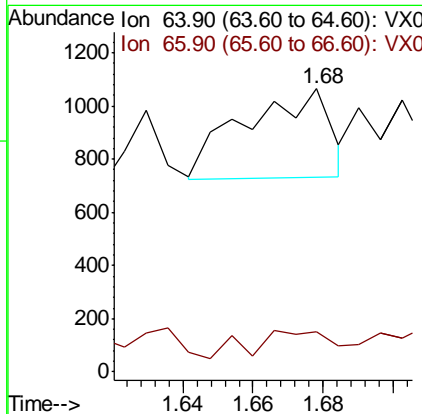
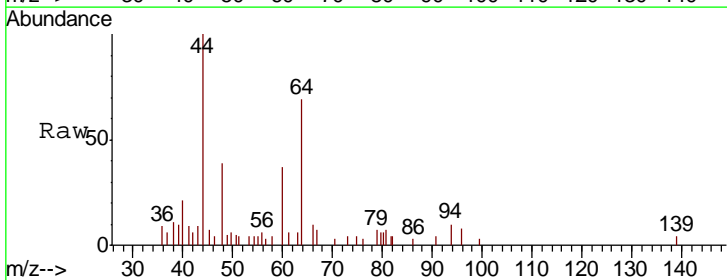
**Instrument :**  
 MSVOA\_X  
**ClientSampled :**  
 STORAGE-BLANK-SAMPLE-MANA

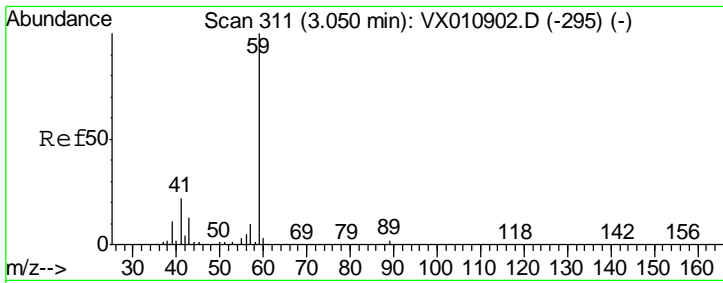
Tgt Ion	Resp	Lower	Upper
94	100		
96	107.2	75.6	113.4



#6  
 Chloroethane  
 Concen: 0.438 ug/l  
 RT: 1.68 min Scan# 86  
 Delta R.T. -0.04 min  
 Lab File: VX011000.D  
 Acq: 19 Jul 2019 14:18

Tgt Ion	Resp	Lower	Upper
64	100		
66	22.3	27.0	40.6#

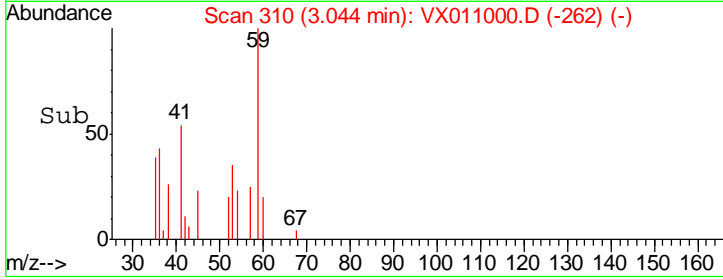
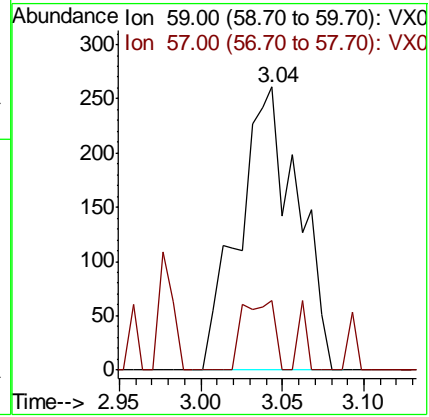
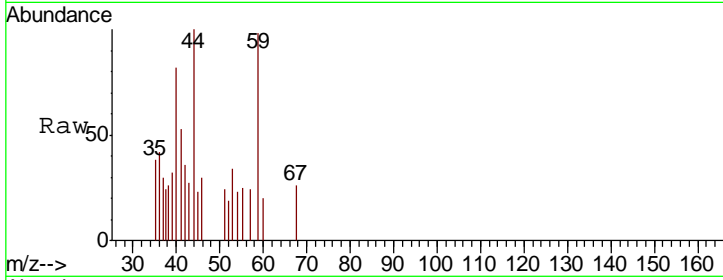




#11  
 Tert butyl alcohol  
 Concen: 1.214 ug/l  
 RT: 3.04 min Scan# 310  
 Delta R.T. -0.01 min  
 Lab File: VX011000.D  
 Acq: 19 Jul 2019 14:18

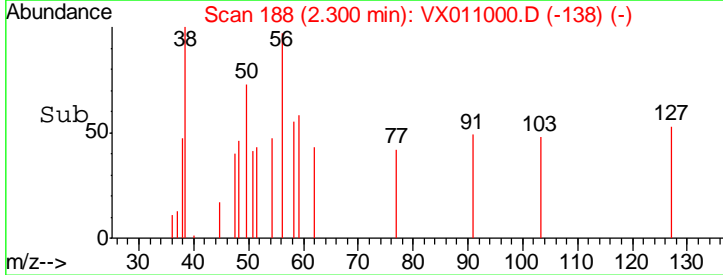
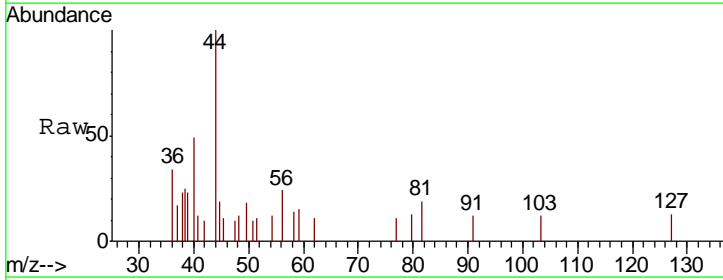
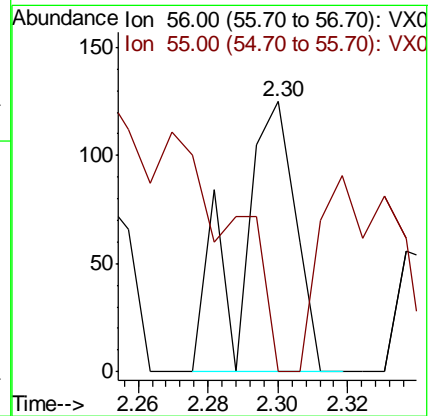
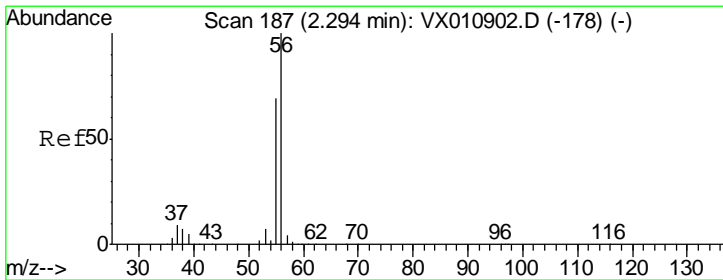
**Instrument :**  
 MSVOA\_X  
**ClientSampled :**  
 STORAGE-BLANK-SAMPLE-MANA

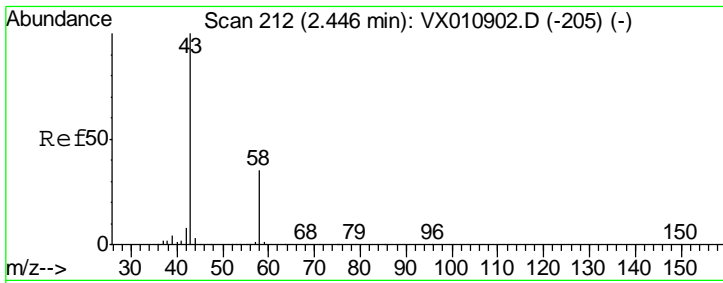
Tgt Ion: 59 Resp: 653  
 Ion Ratio Lower Upper  
 59 100  
 57 13.3 7.9 11.9#



#13  
 Acrolein  
 Concen: 0.441 ug/l  
 RT: 2.30 min Scan# 188  
 Delta R.T. 0.01 min  
 Lab File: VX011000.D  
 Acq: 19 Jul 2019 14:18

Tgt Ion: 56 Resp: 137  
 Ion Ratio Lower Upper  
 56 100  
 55 0.0 55.9 83.9#

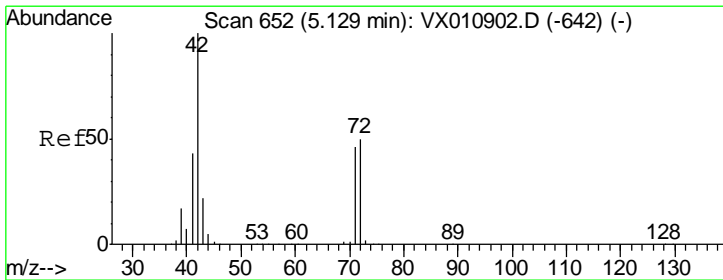
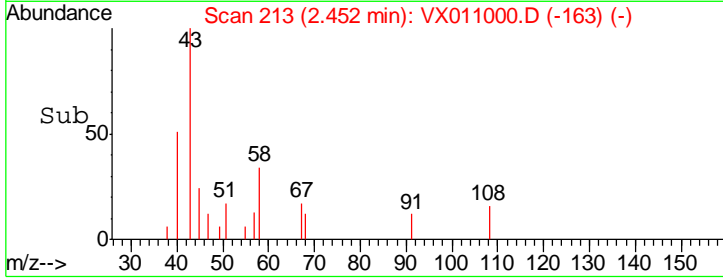
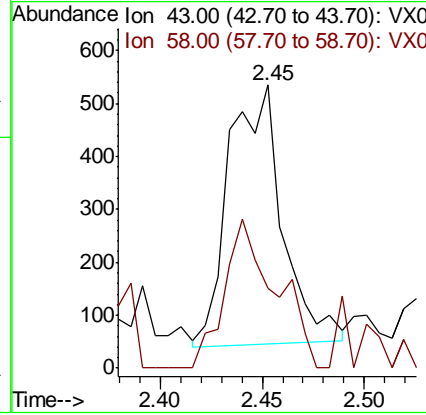
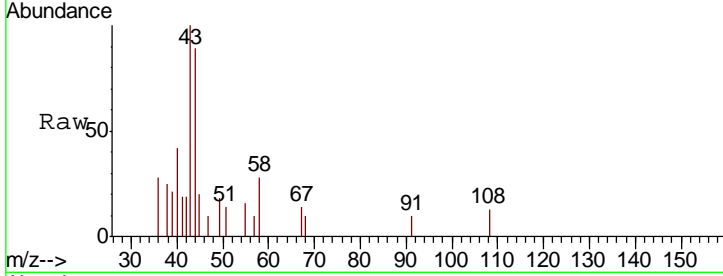




#16  
 Acetone  
 Concen: 0.858 ug/l  
 RT: 2.45 min Scan# 213  
 Delta R.T. 0.01 min  
 Lab File: VX011000.D  
 Acq: 19 Jul 2019 14:18

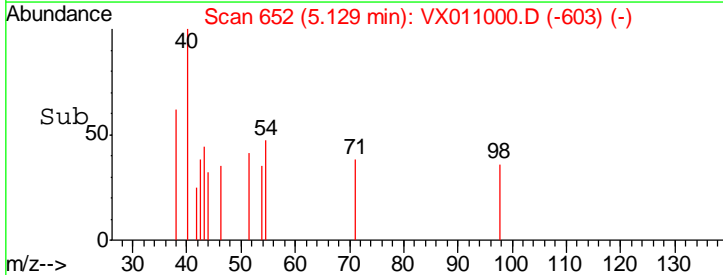
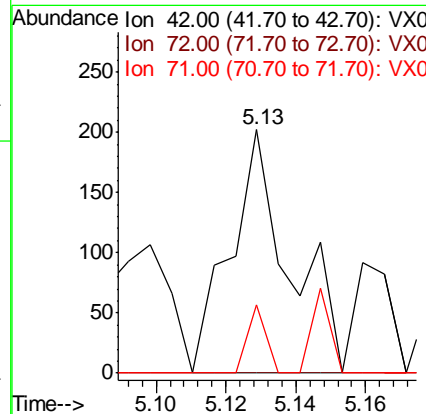
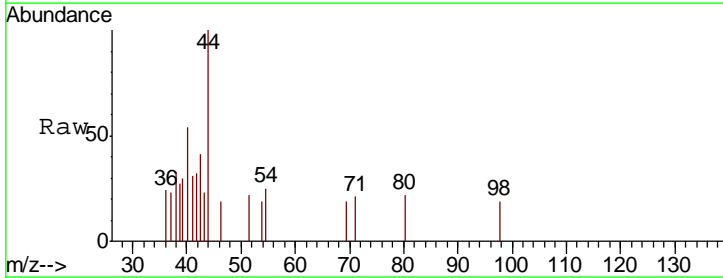
**Instrument :**  
 MSVOA\_X  
**ClientSampled :**  
 STORAGE-BLANK-SAMPLE-MANA

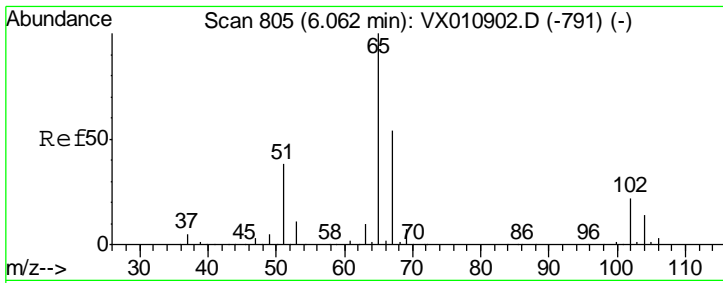
Tgt Ion	Resp	Lower	Upper
43	100		
58	31.1	27.7	41.5



#29  
 Tetrahydrofuran  
 Concen: 0.252 ug/l  
 RT: 5.13 min Scan# 652  
 Delta R.T. 0.00 min  
 Lab File: VX011000.D  
 Acq: 19 Jul 2019 14:18

Tgt Ion	Resp	Lower	Upper
42	100		
72	0.0	39.8	59.8#
71	8.8	37.0	55.4#

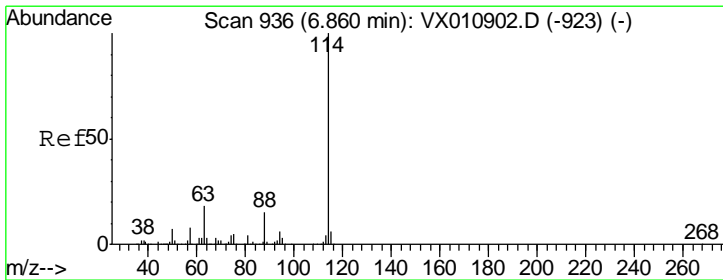
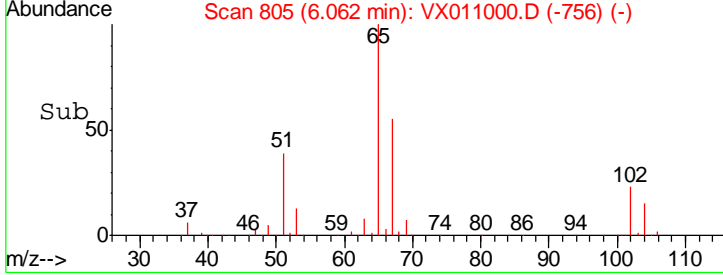
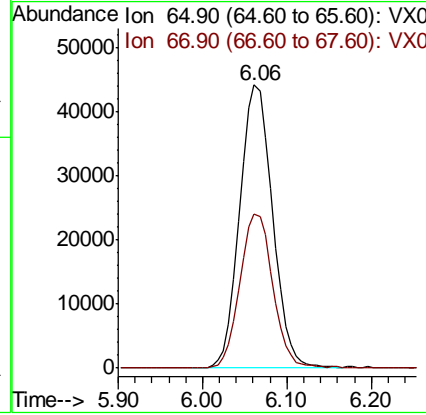
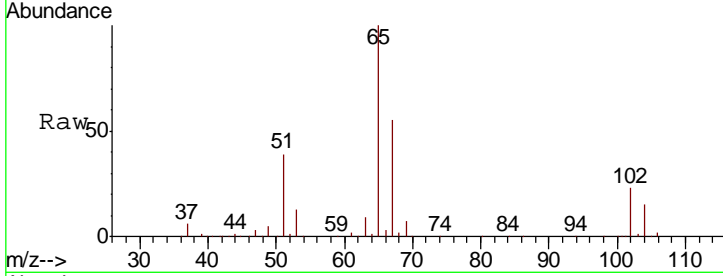




#33  
 1,2-Dichloroethane-d4  
 Concen: 50.449 ug/l  
 RT: 6.06 min Scan# 805  
 Delta R.T. 0.00 min  
 Lab File: VX011000.D  
 Acq: 19 Jul 2019 14:18

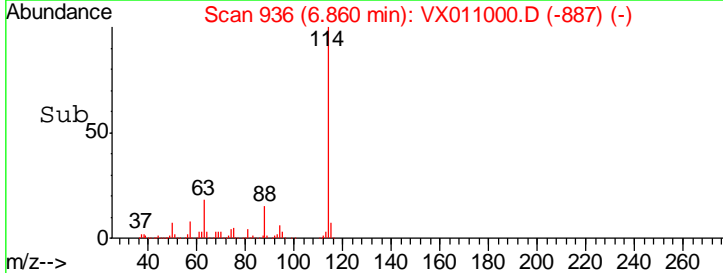
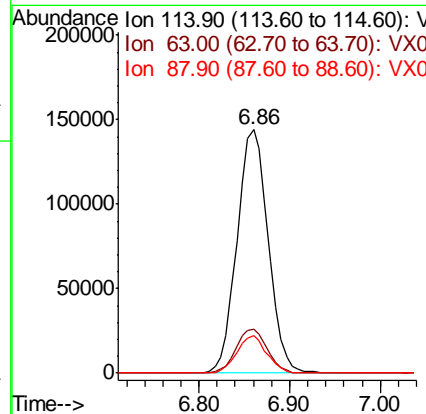
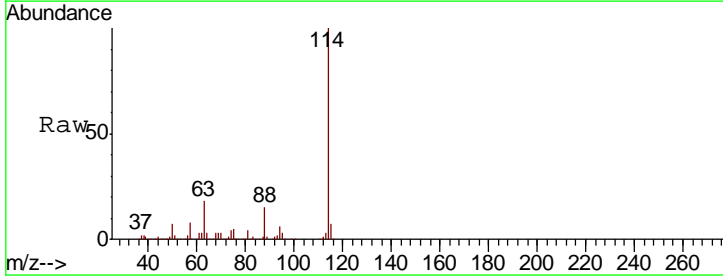
Instrument :  
 MSVOA\_X  
 ClientSampleId :  
 STORAGE-BLANK-SAMPLE-MANA

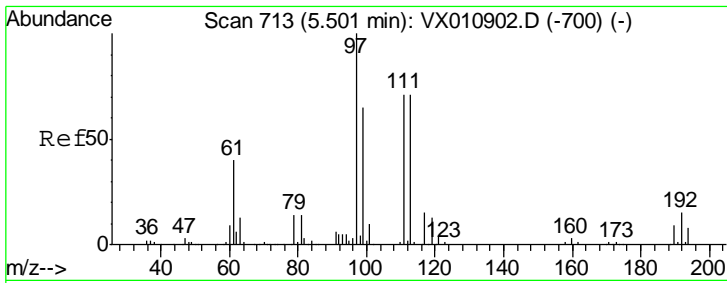
Tgt Ion	Resp	Lower	Upper
65	116545		
67	54.3	0.0	107.8



#34  
 1,4-Difluorobenzene  
 Concen: 50.000 ug/l  
 RT: 6.86 min Scan# 936  
 Delta R.T. 0.00 min  
 Lab File: VX011000.D  
 Acq: 19 Jul 2019 14:18

Tgt Ion	Resp	Lower	Upper
114	343759		
63	18.3	0.0	35.6
88	15.5	0.0	29.8

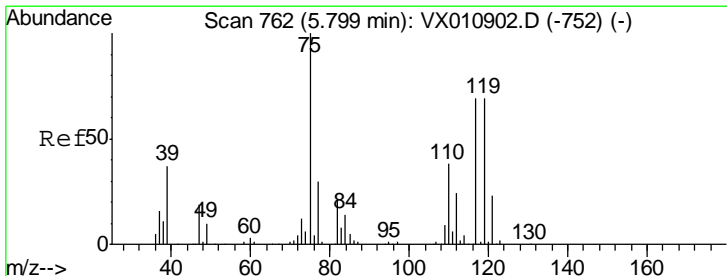
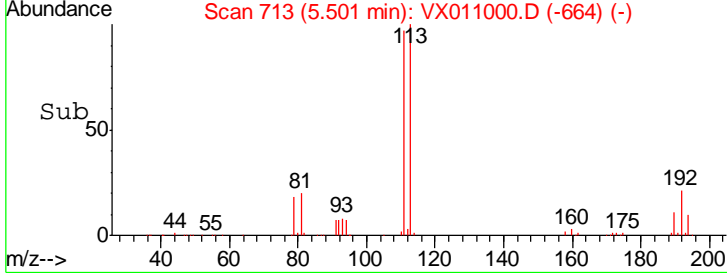
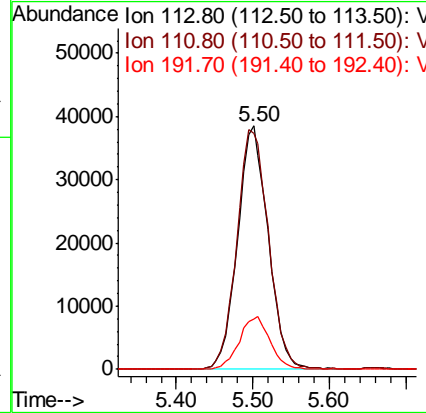
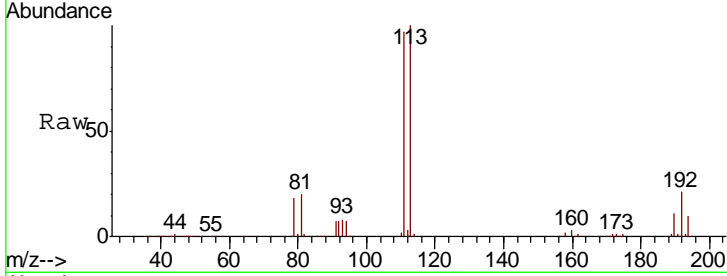




#35  
 Dibromofluoromethane  
 Concen: 48.788 ug/l  
 RT: 5.50 min Scan# 713  
 Delta R.T. 0.00 min  
 Lab File: VX011000.D  
 Acq: 19 Jul 2019 14:18

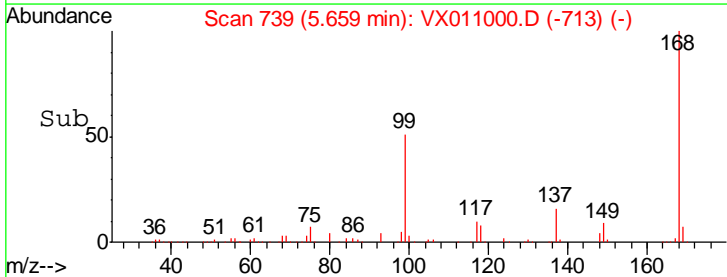
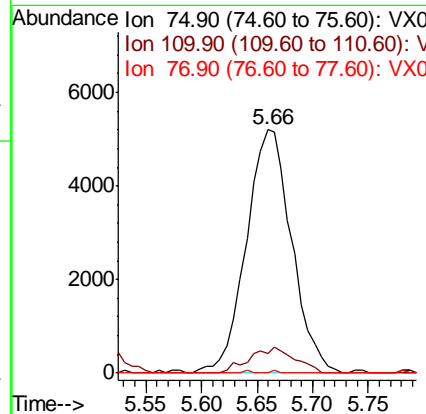
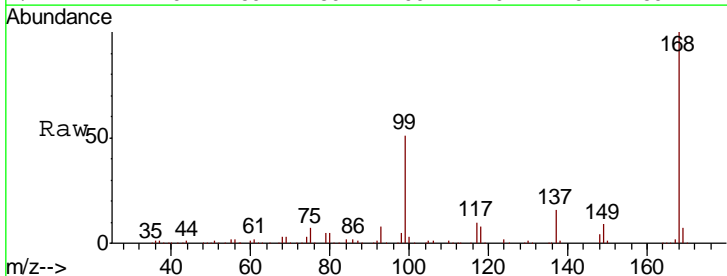
**Instrument :**  
 MSVOA\_X  
**ClientSampleId :**  
 STORAGE-BLANK-SAMPLE-MANA

Tgt Ion	Resp	Lower	Upper
113	106451		
111	102.5	82.3	123.5
192	21.9	17.4	26.2

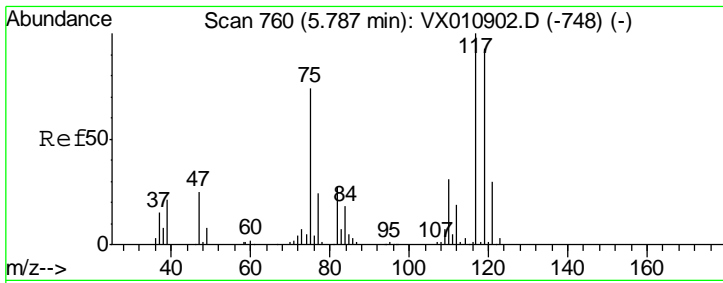


#36  
 1,1-Dichloropropene  
 Concen: 5.206 ug/l  
 RT: 5.66 min Scan# 739  
 Delta R.T. -0.14 min  
 Lab File: VX011000.D  
 Acq: 19 Jul 2019 14:18

Tgt Ion	Resp	Lower	Upper
75	14700		
110	10.7	19.9	59.7#
77	0.1	25.0	37.4#



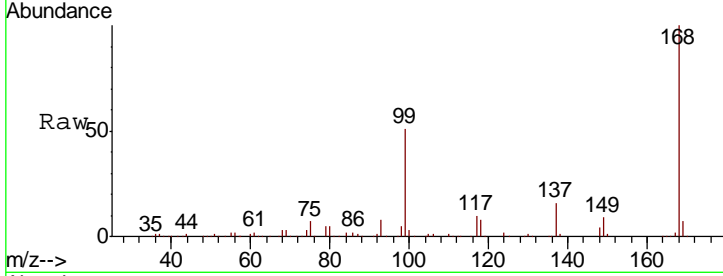




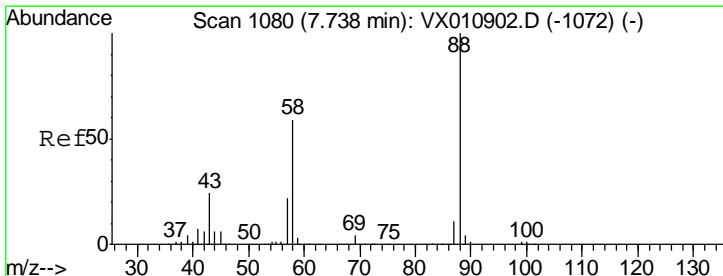
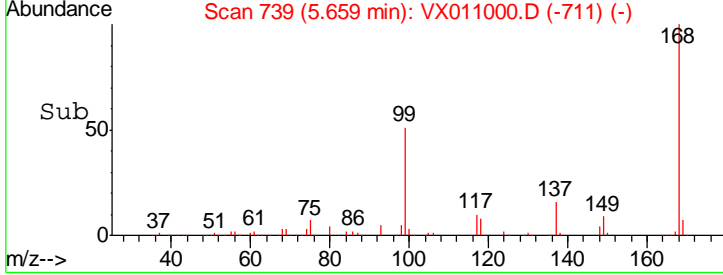
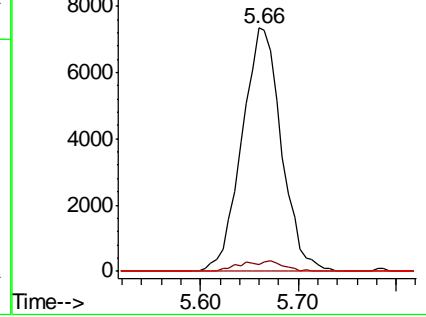
#38  
 Carbon Tetrachloride  
 Concen: 6.954 ug/l  
 RT: 5.66 min Scan# 739  
 Delta R.T. -0.13 min  
 Lab File: VX011000.D  
 Acq: 19 Jul 2019 14:18

**Instrument :**  
 MSVOA\_X  
**ClientSampled :**  
 STORAGE-BLANK-SAMPLE-MANA

Tgt Ion	Resp	Lower	Upper
117	100		
119	3.0	74.2	111.2#
121	0.0	24.2	36.2#

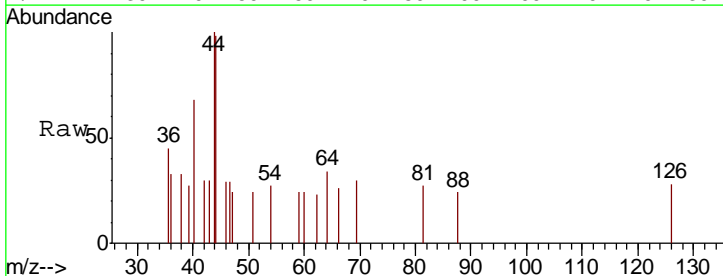


Abundance Ion 116.80 (116.50 to 117.50): V  
 Ion 118.80 (118.50 to 119.50): V  
 Ion 120.80 (120.50 to 121.50): V

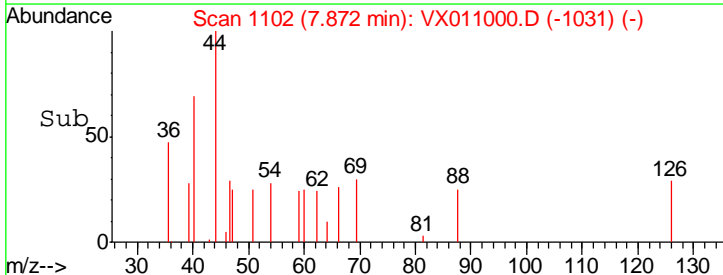
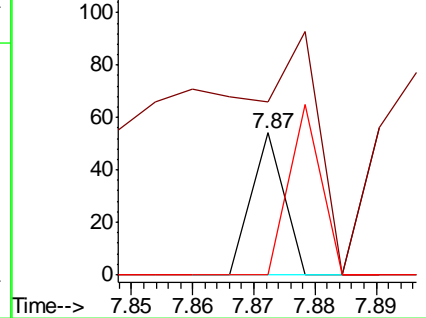


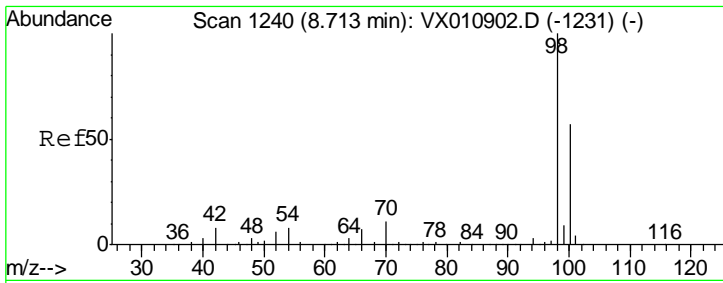
#49  
 1,4-Dioxane  
 Concen: 0.309 ug/l  
 RT: 7.87 min Scan# 1102  
 Delta R.T. 0.13 min  
 Lab File: VX011000.D  
 Acq: 19 Jul 2019 14:18

Tgt Ion	Resp	Lower	Upper
88	100		
43	0.0	22.9	34.3#
58	120.0	49.8	74.8#



Abundance Ion 88.00 (87.70 to 88.70): VX0  
 Ion 43.00 (42.70 to 43.70): VX0  
 Ion 58.00 (57.70 to 58.70): VX0

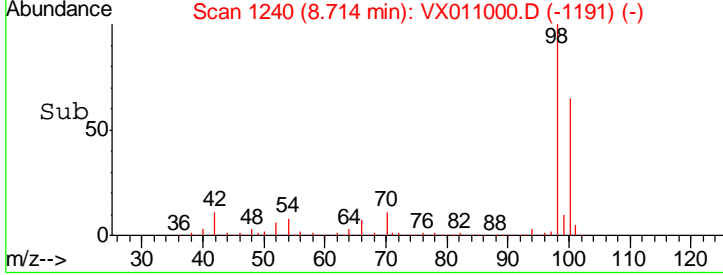
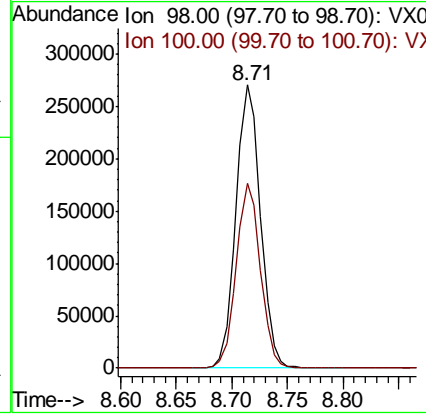
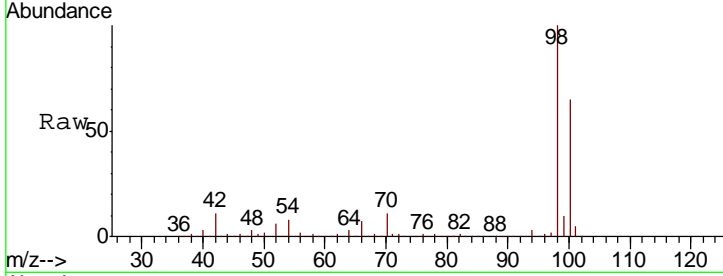




#50  
 Toluene-d8  
 Concen: 50.471 ug/l  
 RT: 8.71 min Scan# 1240  
 Delta R.T. 0.00 min  
 Lab File: VX011000.D  
 Acq: 19 Jul 2019 14:18

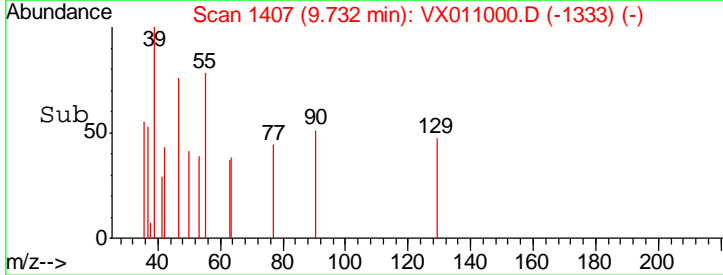
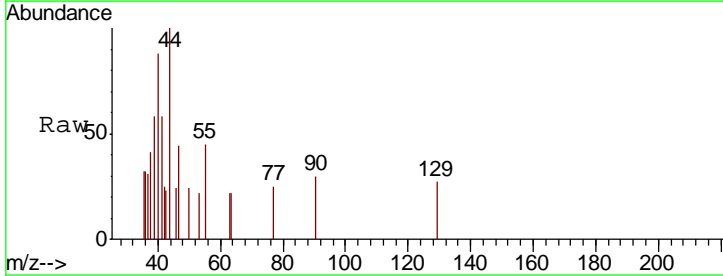
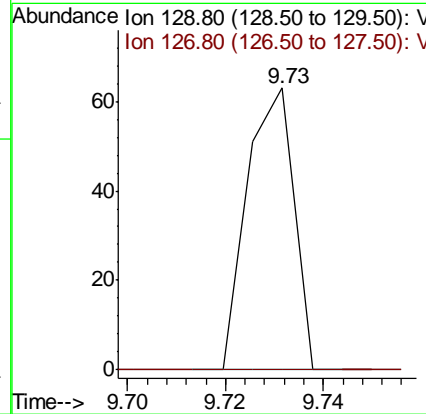
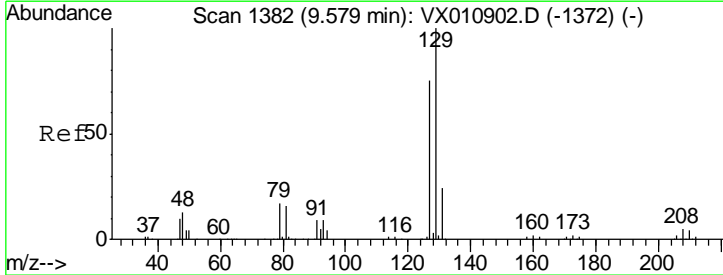
**Instrument :**  
 MSVOA\_X  
**ClientSampled :**  
 STORAGE-BLANK-SAMPLE-MANA

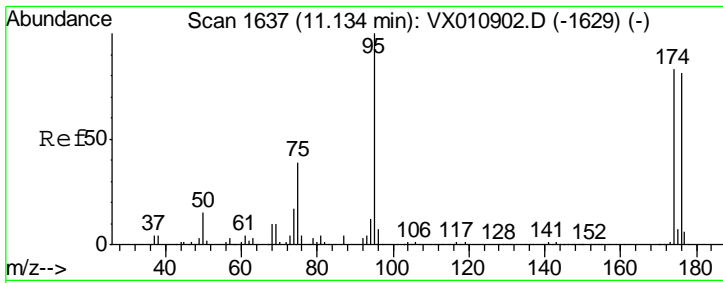
Tgt Ion: 98 Resp: 413031  
 Ion Ratio Lower Upper  
 98 100  
 100 64.1 50.6 75.8



#60  
 Dibromochloromethane  
 Concen: 2.543 ug/l  
 RT: 9.73 min Scan# 1407  
 Delta R.T. 0.15 min  
 Lab File: VX011000.D  
 Acq: 19 Jul 2019 14:18

Tgt Ion: 129 Resp: 42  
 Ion Ratio Lower Upper  
 129 100  
 127 0.0 38.6 115.8#



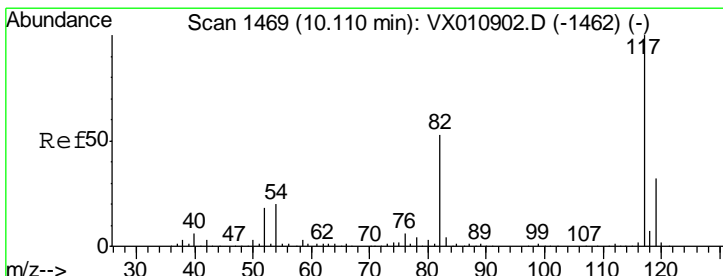
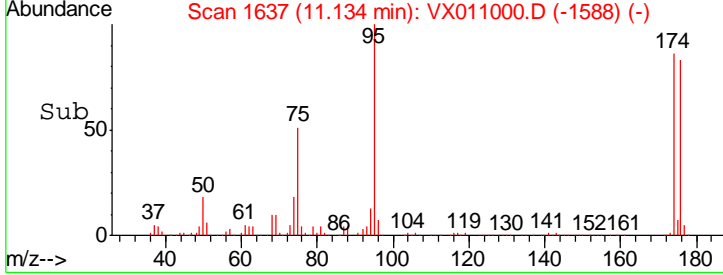
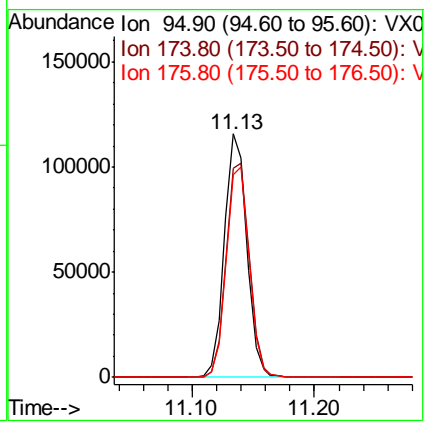
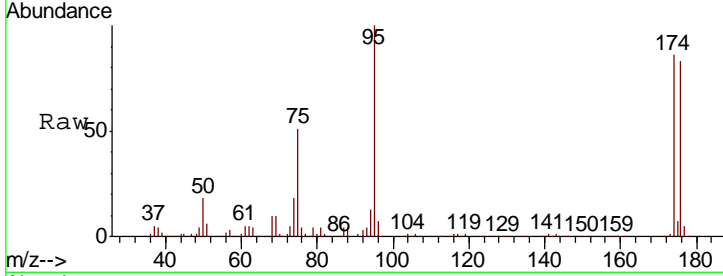


#62  
 4-Bromofluorobenzene  
 Concen: 48.883 ug/l  
 RT: 11.13 min Scan# 1637  
 Delta R.T. 0.00 min  
 Lab File: VX011000.D  
 Acq: 19 Jul 2019 14:18

Instrument :  
 MSVOA\_X  
 ClientSampleId :  
 STORAGE-BLANK-SAMPLE-MANA

Tot Ion: 95 Resp: 147042

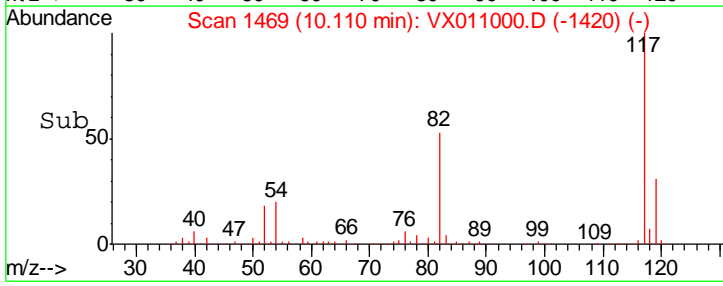
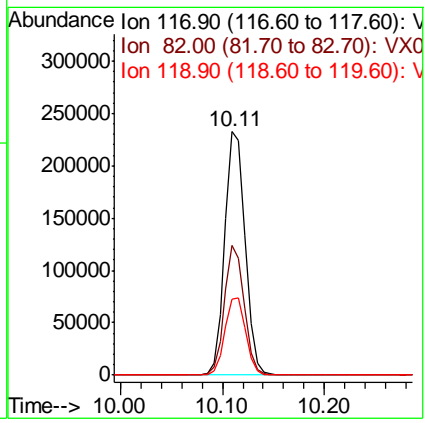
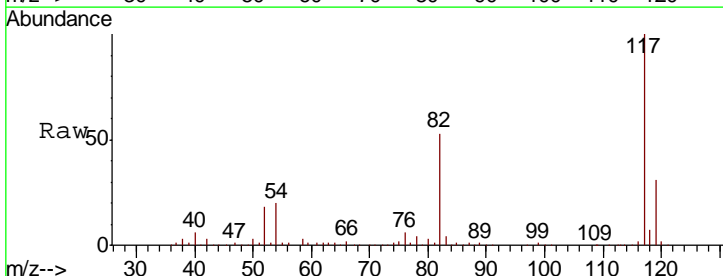
Ion	Ratio	Lower	Upper
95	100		
174	90.8	0.0	180.6
176	87.9	0.0	173.8

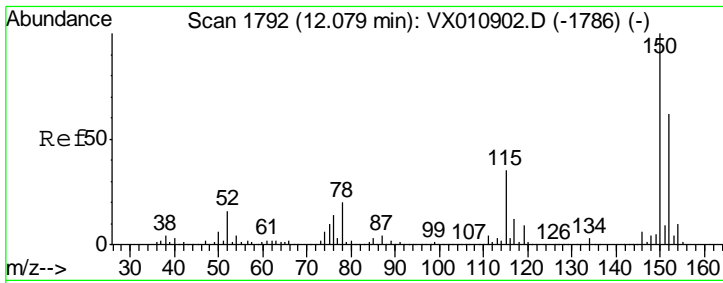


#63  
 Chlorobenzene-d5  
 Concen: 50.000 ug/l  
 RT: 10.11 min Scan# 1469  
 Delta R.T. 0.00 min  
 Lab File: VX011000.D  
 Acq: 19 Jul 2019 14:18

Tgt Ion: 117 Resp: 322145

Ion	Ratio	Lower	Upper
117	100		
82	53.1	42.6	63.8
119	31.4	25.9	38.9

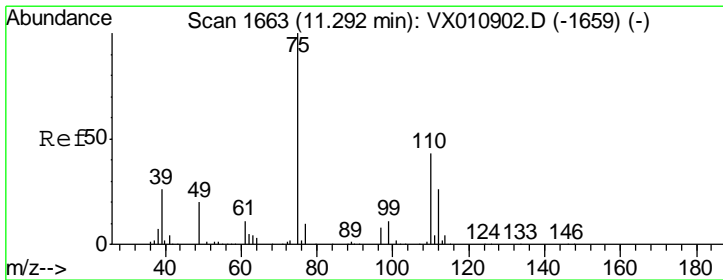
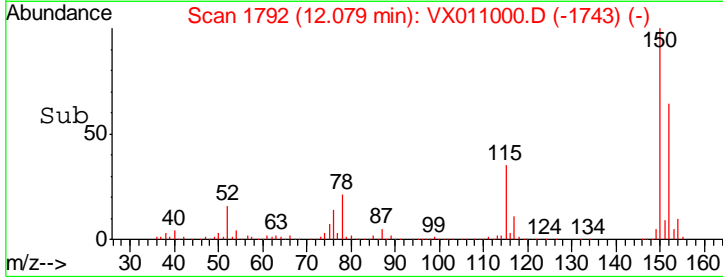
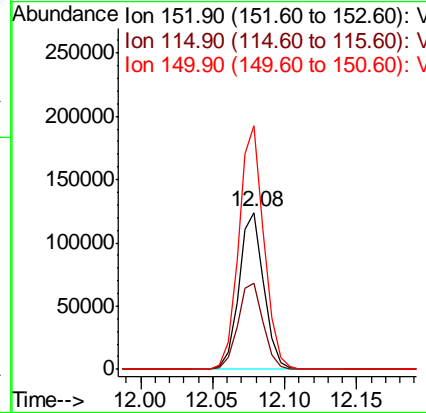
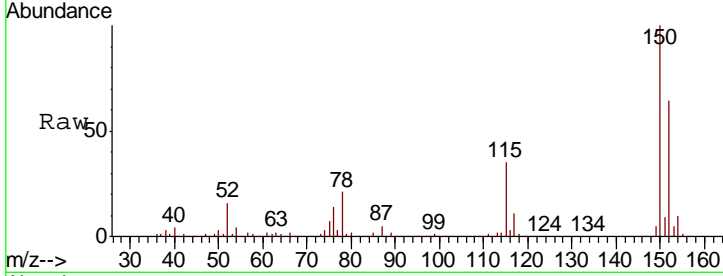




#72  
 1,4-Dichlorobenzene-d4  
 Concen: 50.000 ug/l  
 RT: 12.08 min Scan# 1792  
 Delta R.T. 0.00 min  
 Lab File: VX011000.D  
 Acq: 19 Jul 2019 14:18

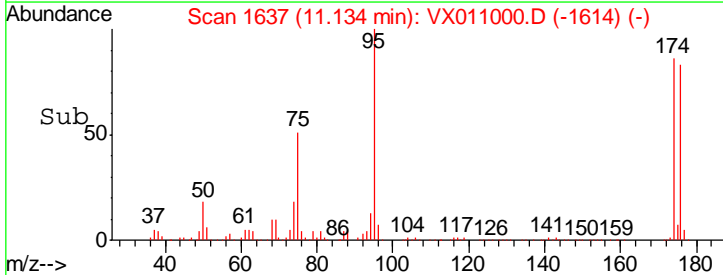
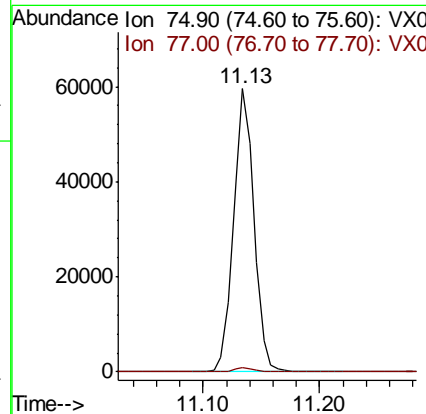
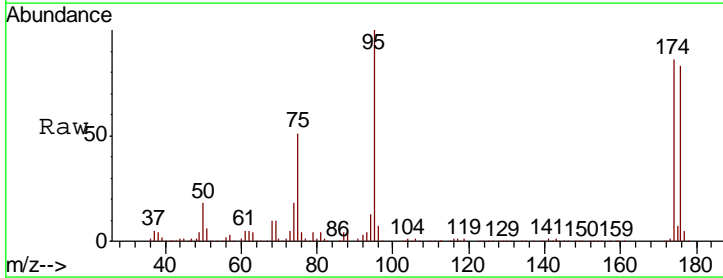
Instrument : MSVOA\_X  
 ClientSampleId : STORAGE-BLANK-SAMPLE-MANA

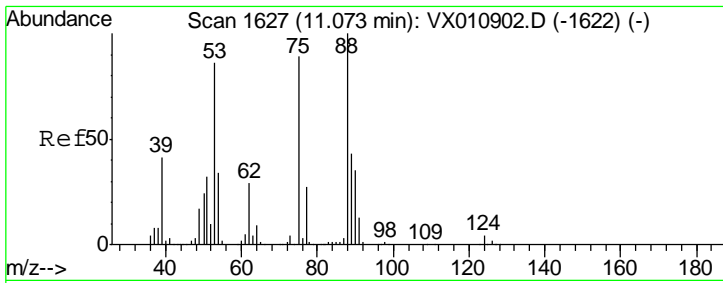
Tgt Ion	Resp	Lower	Upper
152	100		
115	56.1	39.7	119.1
150	156.5	0.0	345.6



#76  
 1,2,3-Trichloropropane  
 Concen: 26.994 ug/l  
 RT: 11.13 min Scan# 1637  
 Delta R.T. -0.16 min  
 Lab File: VX011000.D  
 Acq: 19 Jul 2019 14:18

Tgt Ion	Resp	Lower	Upper
75	100		
77	1.4	21.3	64.0

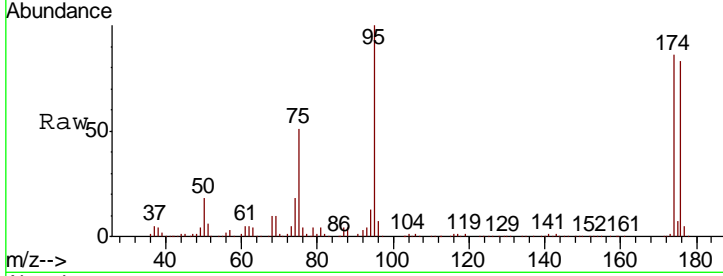




#81  
 trans-1,4-Dichloro-2-butene  
 Concen: 66.926 ug/l  
 RT: 11.13 min Scan# 1637  
 Delta R.T. 0.06 min  
 Lab File: VX011000.D  
 Acq: 19 Jul 2019 14:18

Instrument : MSVOA\_X  
 ClientSampleId : STORAGE-BLANK-SAMPLE-MANA

Tot Ion	Resp	Lower	Upper
75	72785		
53	0.0	76.7	115.1#
89	0.0	38.5	57.7#



Abundance Ion 74.90 (74.60 to 75.60): VX0  
 Ion 53.00 (52.70 to 53.70): VX0  
 Ion 88.90 (88.60 to 89.60): VX0

