

Data Path : Z:\VOASRV\HPCHEM1\MSVOA X\DATA\VX072019\
 Data File : VX011010.D
 Acq On : 19 Jul 2019 18:11
 Operator : JC/SP
 Sample : K3884-10DL 5X
 Misc : 5.0mL/MSVOA X/WATER
 ALS Vial : 21 Sample Multiplier: 1

Instrument :
 MSVOA_X
ClientSampled :
 FL-0630DL

Manual Integrations
APPROVED
 MMDadoda
 7/22/2019 5:23:41 PM

Quant Time: Jul 22 13:35:11 2019
 Quant Method : Z:\VOASRV\HPCHEM1\MSVOA_X\METHOD\82X071619W.M
 Quant Title : SW846 8260
 QLast Update : Wed Jul 17 06:57:45 2019
 Response via : Initial Calibration

Internal Standards	R.T.	QIon	Response	Conc	Units	Dev(Min)
1) Pentafluorobenzene	5.66	168	235655	50.00	ug/l	0.00
34) 1,4-Difluorobenzene	6.86	114	367904	50.00	ug/l	0.00
63) Chlorobenzene-d5	10.11	117	348559	50.00	ug/l	0.00
72) 1,4-Dichlorobenzene-d4	12.08	152	173011	50.00	ug/l	0.00

System Monitoring Compounds

33) 1,2-Dichloroethane-d4	6.06	65	128499	51.26	ug/l	0.00
Spiked Amount				50.000		
			Recovery	=	102.52%	
35) Dibromofluoromethane	5.50	113	114928	49.22	ug/l	0.00
Spiked Amount				50.000		
			Recovery	=	98.44%	
50) Toluene-d8	8.71	98	447128	51.05	ug/l	0.00
Spiked Amount				50.000		
			Recovery	=	102.10%	
62) 4-Bromofluorobenzene	11.13	95	165314	51.35	ug/l	0.00
Spiked Amount				50.000		
			Recovery	=	102.70%	

Target Compounds

						Qvalue
31) Cyclohexane	5.58	56	169512	49.799	ug/l	95
39) Methylcyclohexane	7.46	83	104321	26.620	ug/l	97
67) Ethyl Benzene	10.25	91	261955	21.497	ug/l	99
68) m/p-Xylenes	10.36	106	167878	35.915	ug/l	99
69) o-Xylene	10.69	106	4321	0.947	ug/l	98
73) Isopropylbenzene	11.02	105	30817	2.636	ug/l	98
78) n-propylbenzene	11.36	91	40145	3.108	ug/l	99
80) 1,3,5-Trimethylbenzene	11.51	105	77746	7.959	ug/l	99
84) 1,2,4-Trimethylbenzene	11.80	105	601061	61.049	ug/l	100
85) sec-Butylbenzene	11.94	105	10091m	0.898	ug/l	
86) p-Isopropyltoluene	12.06	119	12225	1.176	ug/l	96
89) n-Butylbenzene	12.38	91	12479	1.403	ug/l #	20
95) Naphthalene	13.83	128	186092	16.767	ug/l	100

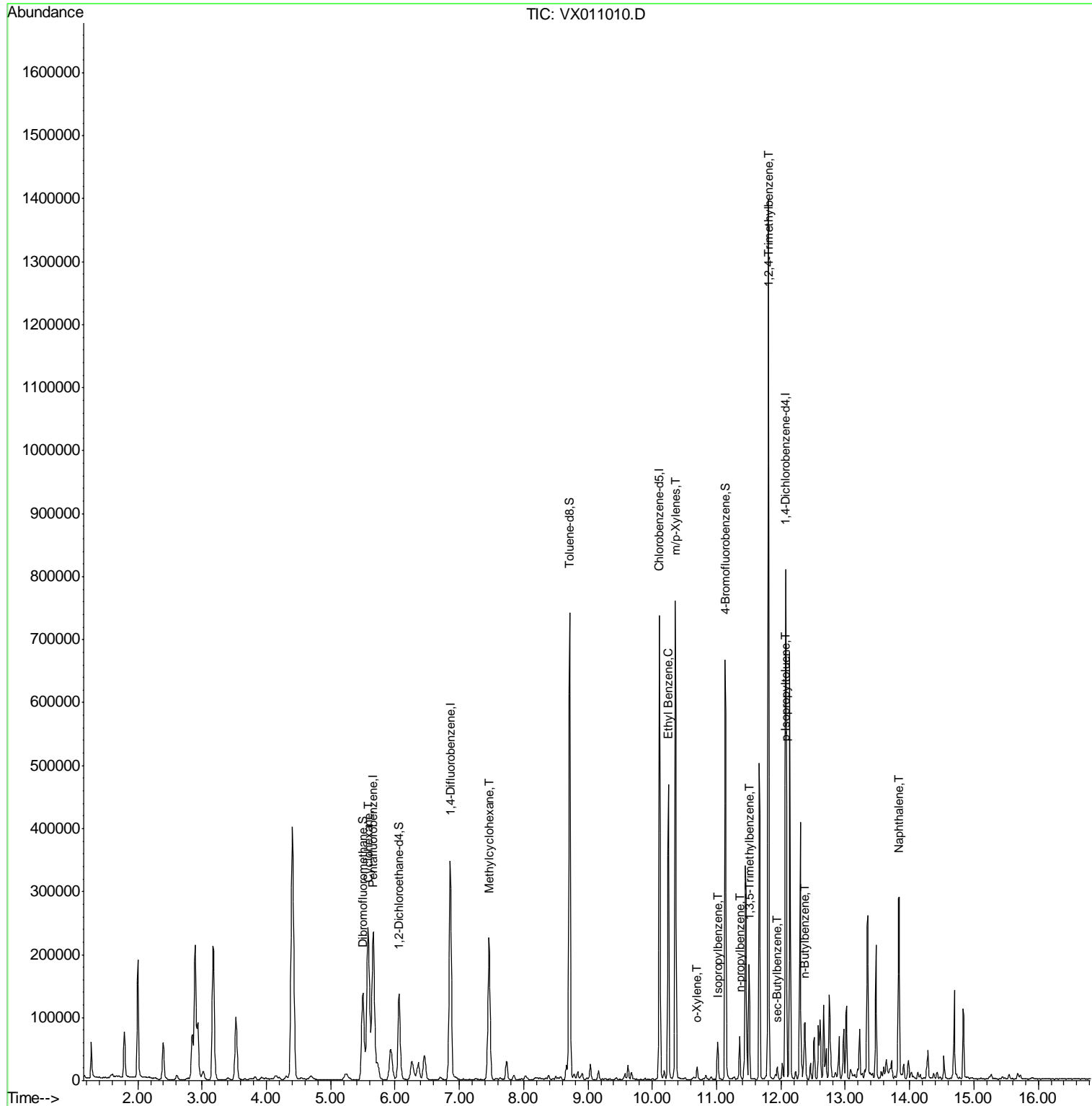
(#) = qualifier out of range (m) = manual integration (+) = signals summed

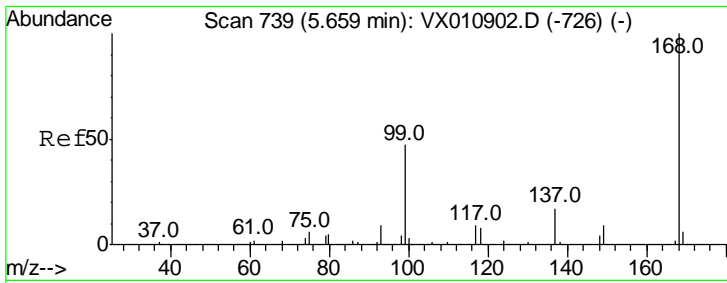
Data Path : Z:\VOASRV\HPCHEM1\MSVOA X\DATA\VX072019\
 Data File : VX011010.D
 Acq On : 19 Jul 2019 18:11
 Operator : JC/SP
 Sample : K3884-10DL 5X
 Misc : 5.0mL/MSVOA X/WATER
 ALS Vial : 21 Sample Multiplier: 1

Instrument :
 MSVOA_X
Client Sampled :
 FL-0630DL

Manual Integrations
APPROVED
 MMDadoda
 7/22/2019 5:23:41 PM

Quant Time: Jul 22 13:35:11 2019
 Quant Method : Z:\VOASRV\HPCHEM1\MSVOA_X\METHOD\82X071619W.M
 Quant Title : SW846 8260
 QLast Update : Wed Jul 17 06:57:45 2019
 Response via : Initial Calibration





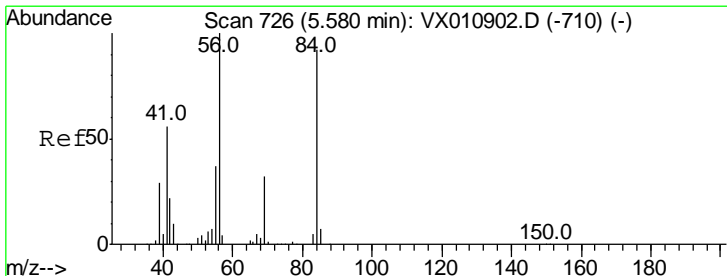
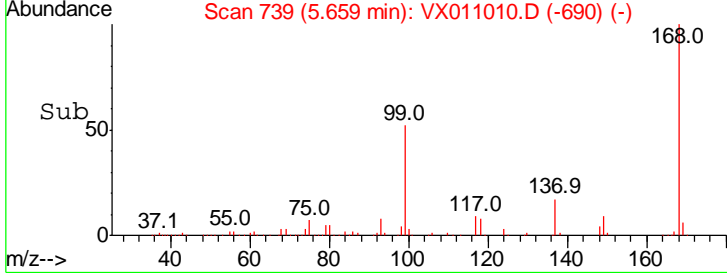
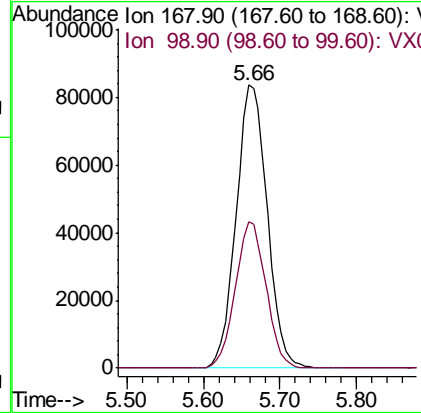
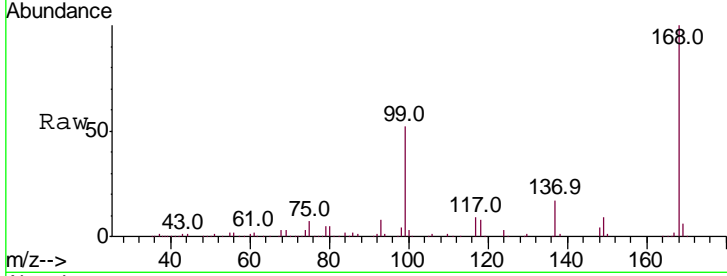
#1
 Pentafluorobenzene
 Concen: 50.000 ug/l
 RT: 5.66 min Scan# 739
 Delta R.T. -0.00 min
 Lab File: VX011010.D
 Acq: 19 Jul 2019 18:11

Instrument :
 MSVOA_X
 ClientSampled :
 FL-0630DL

Tgt Ion	Resp	Lower	Upper
168	100		
99	51.5	37.6	56.4

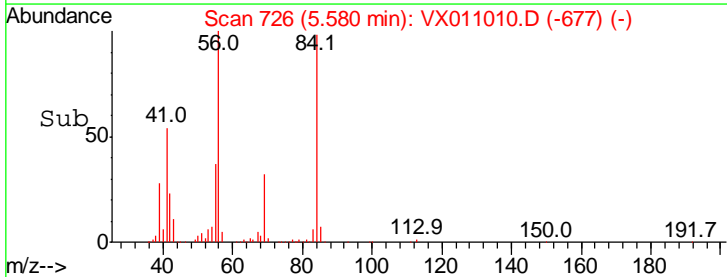
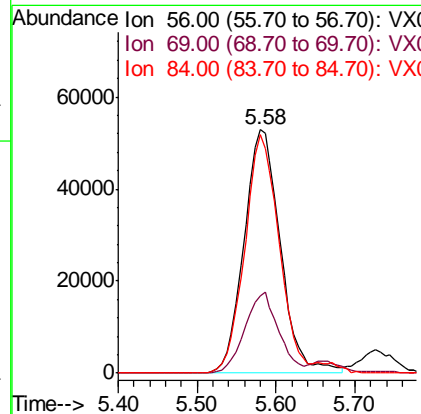
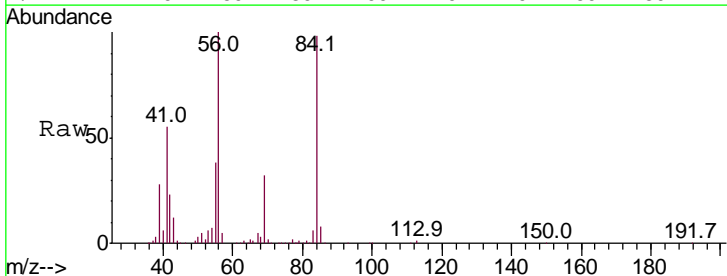
Manual Integrations
 APPROVED

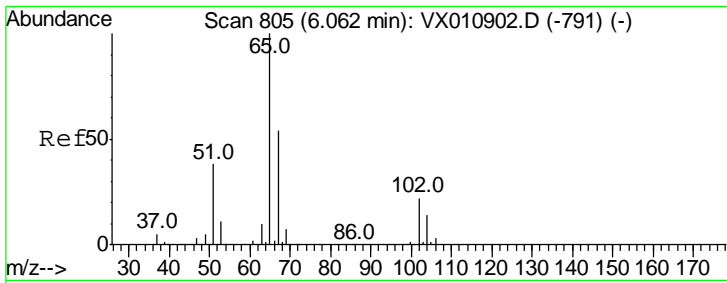
MMDadoda
 7/22/2019 5:23:41 PM



#31
 Cyclohexane
 Concen: 49.799 ug/l
 RT: 5.58 min Scan# 726
 Delta R.T. -0.00 min
 Lab File: VX011010.D
 Acq: 19 Jul 2019 18:11

Tgt Ion	Resp	Lower	Upper
56	100		
69	31.4	25.8	38.8
84	98.0	73.8	110.6



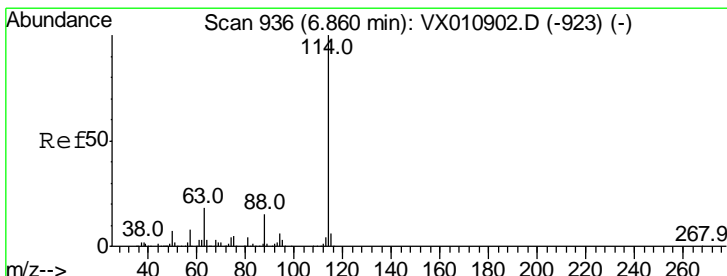
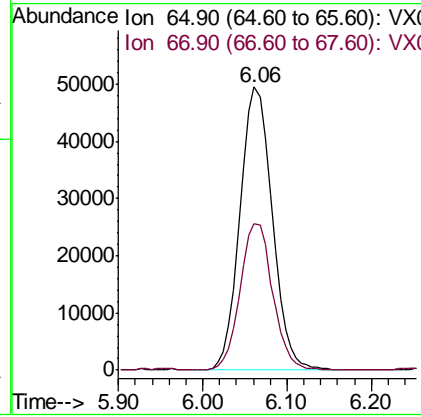
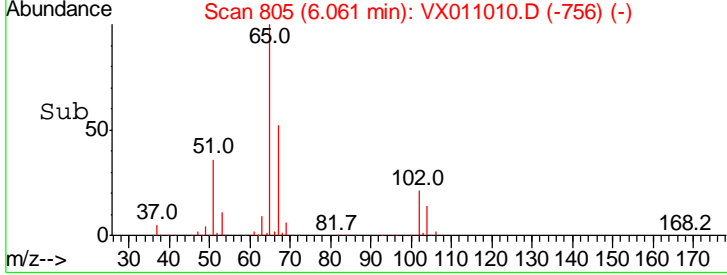
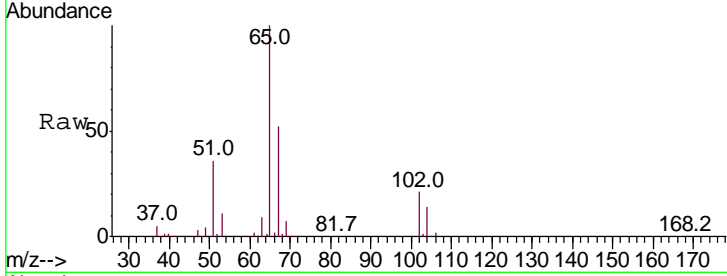


#33
 1,2-Dichloroethane-d4
 Concen: 51.256 ug/l
 RT: 6.06 min Scan# 805
 Delta R.T. -0.00 min
 Lab File: VX011010.D
 Acq: 19 Jul 2019 18:11

Instrument :
 MSVOA_X
ClientSampled :
 FL-0630DL

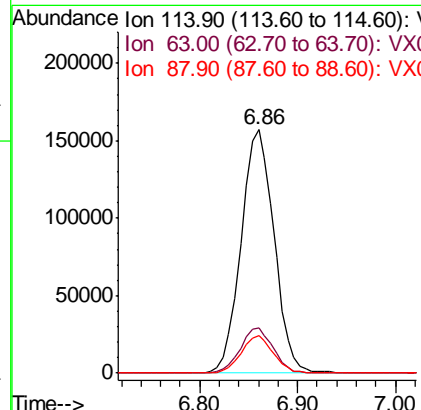
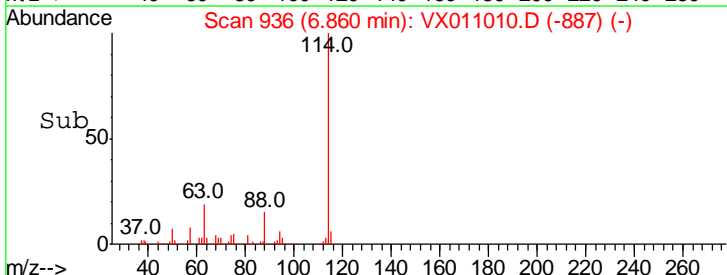
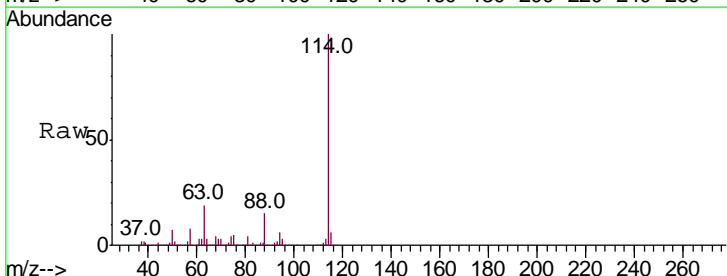
Tgt Ion	Resp	Lower	Upper
65	100		
67	52.2	0.0	107.8

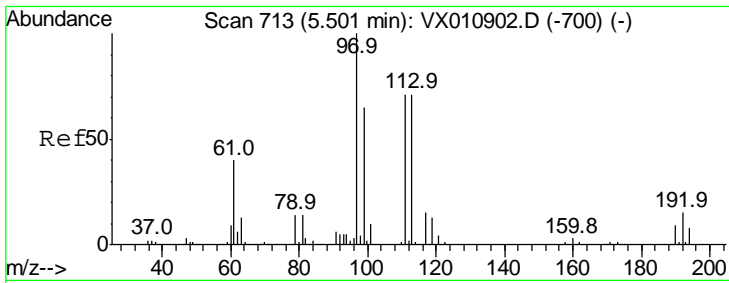
Manual Integrations
APPROVED
 MMDadoda
 7/22/2019 5:23:41 PM



#34
 1,4-Difluorobenzene
 Concen: 50.000 ug/l
 RT: 6.86 min Scan# 936
 Delta R.T. -0.00 min
 Lab File: VX011010.D
 Acq: 19 Jul 2019 18:11

Tgt Ion	Resp	Lower	Upper
114	100		
63	18.5	0.0	35.6
88	15.2	0.0	29.8





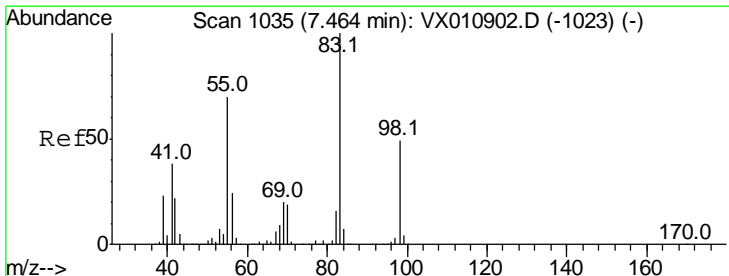
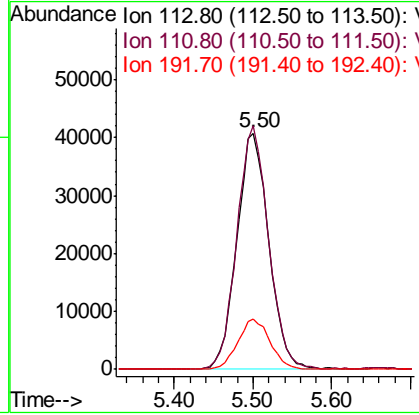
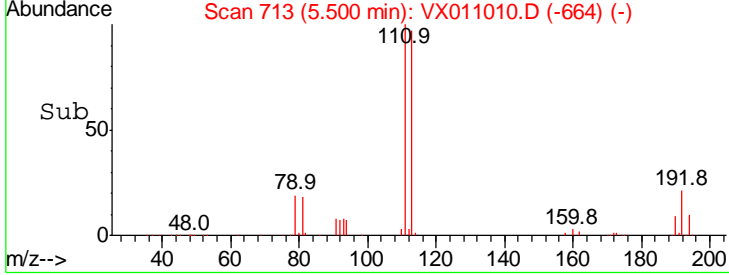
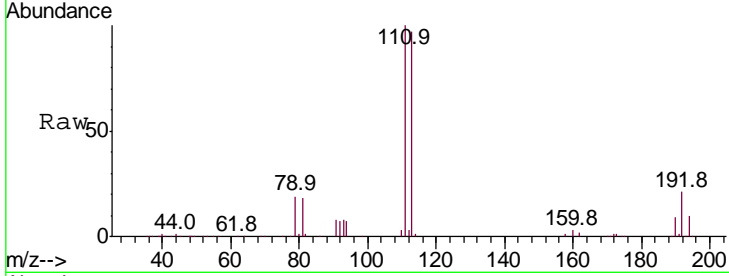
#35
 Dibromofluoromethane
 Concen: 49.216 ug/l
 RT: 5.50 min Scan# 713
 Delta R.T. -0.00 min
 Lab File: VX011010.D
 Acq: 19 Jul 2019 18:11

Instrument : MSVOA_X
 Client Sampled : FL-0630DL

Tgt Ion	Resp	Lower	Upper
113	114928		
113	100		
111	102.0	82.3	123.5
192	21.6	17.4	26.2

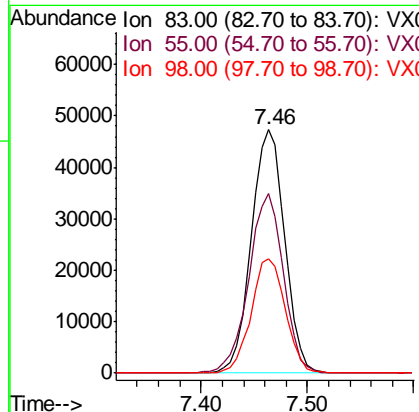
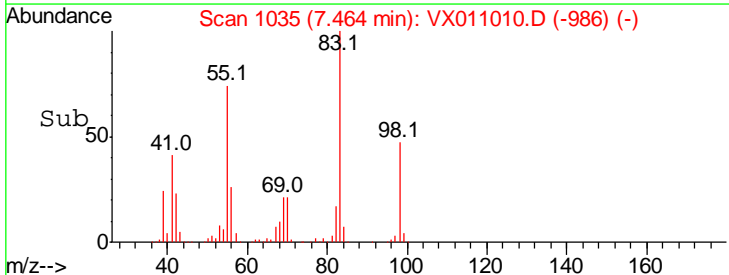
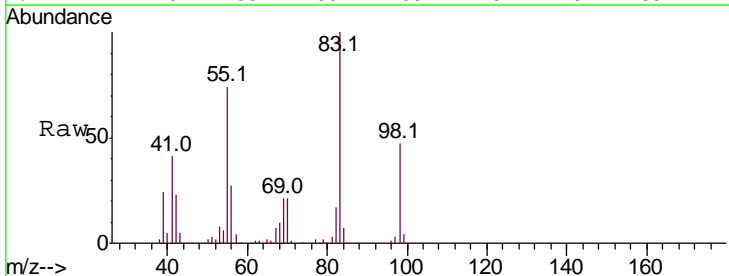
Manual Integrations
 APPROVED

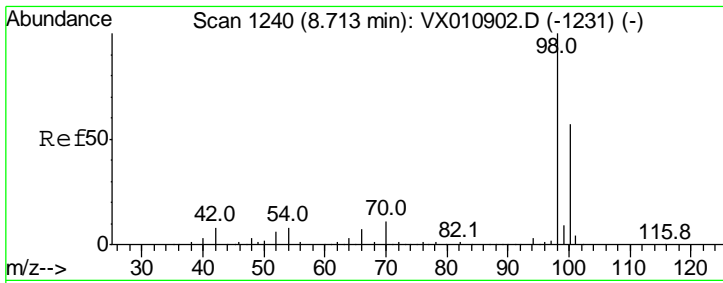
MMDadoda
 7/22/2019 5:23:41 PM



#39
 Methylcyclohexane
 Concen: 26.620 ug/l
 RT: 7.46 min Scan# 1035
 Delta R.T. -0.00 min
 Lab File: VX011010.D
 Acq: 19 Jul 2019 18:11

Tgt Ion	Resp	Lower	Upper
83	104321		
83	100		
55	73.7	56.2	84.4
98	47.2	39.0	58.4





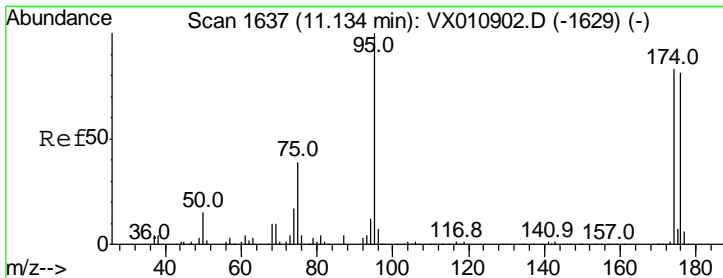
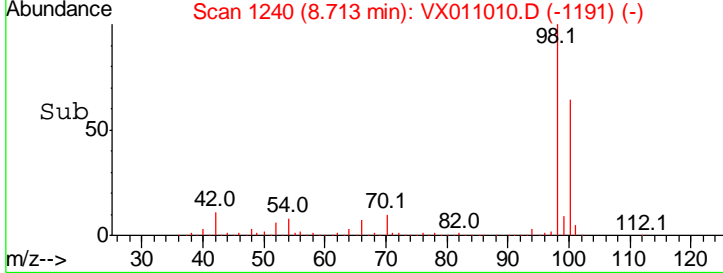
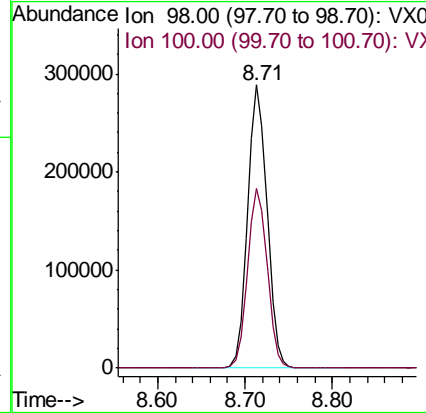
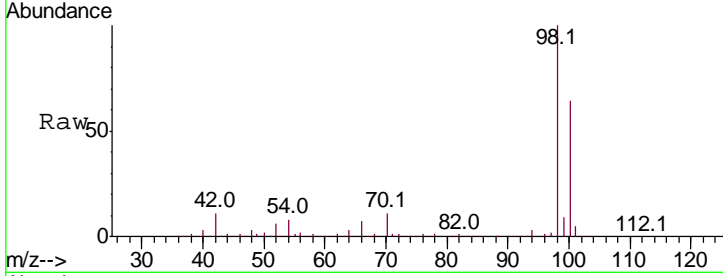
#50
 Toluene-d8
 Concen: 51.052 ug/l
 RT: 8.71 min Scan# 1240
 Delta R.T. -0.00 min
 Lab File: VX011010.D
 Acq: 19 Jul 2019 18:11

Instrument :
 MSVOA_X
Client Sampled :
 FL-0630DL

Tgt Ion: 98 Resp: 447128

Ion	Ratio	Lower	Upper
98	100		
100	64.0	50.6	75.8

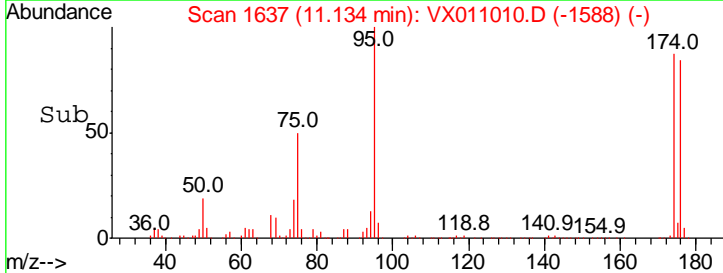
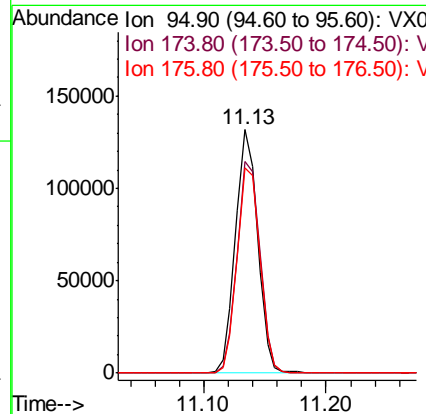
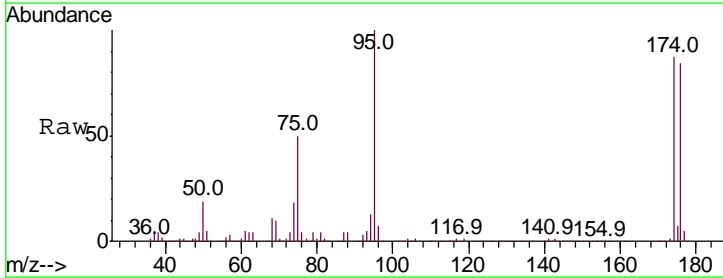
Manual Integrations
APPROVED
 MMDadoda
 7/22/2019 5:23:41 PM

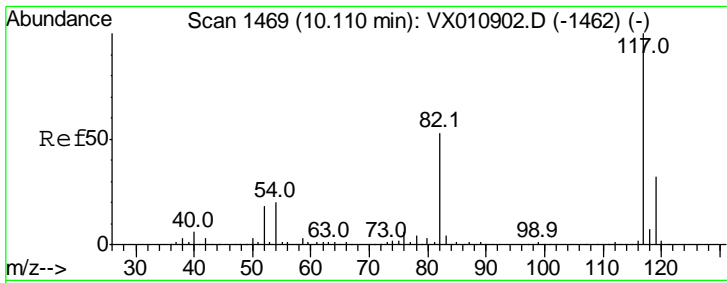


#62
 4-Bromofluorobenzene
 Concen: 51.351 ug/l
 RT: 11.13 min Scan# 1637
 Delta R.T. -0.00 min
 Lab File: VX011010.D
 Acq: 19 Jul 2019 18:11

Tgt Ion: 95 Resp: 165314

Ion	Ratio	Lower	Upper
95	100		
174	89.7	0.0	180.6
176	87.1	0.0	173.8





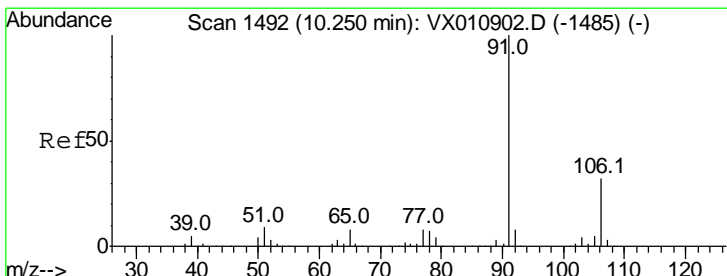
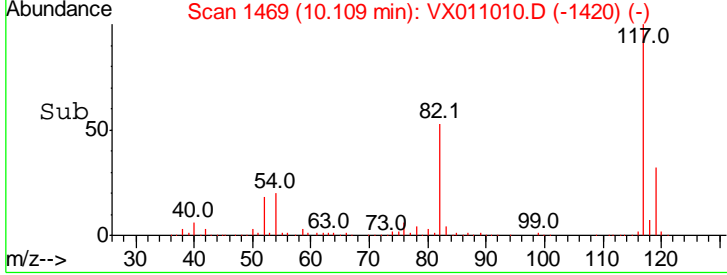
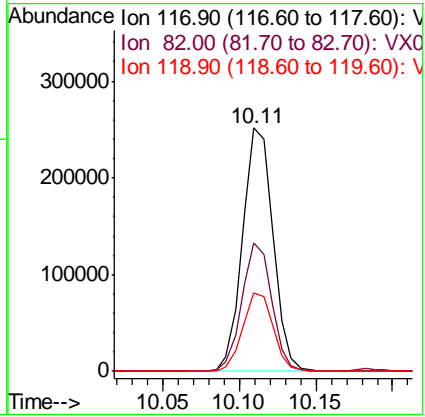
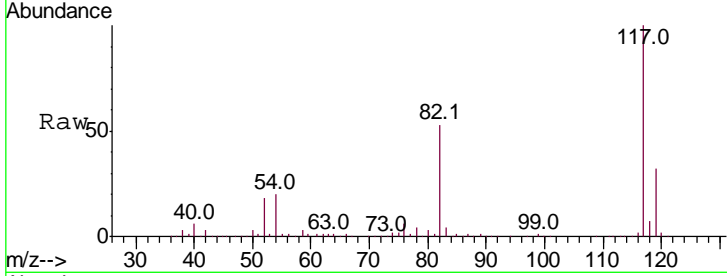
#63
 Chlorobenzene-d5
 Concen: 50.000 ug/l
 RT: 10.11 min Scan# 1469
 Delta R.T. -0.00 min
 Lab File: VX011010.D
 Acq: 19 Jul 2019 18:11

Instrument : MSVOA_X
 Client Sampled : FL-0630DL

Tgt Ion	Resp	Lower	Upper
117	100		
82	52.8	42.6	63.8
119	32.2	25.9	38.9

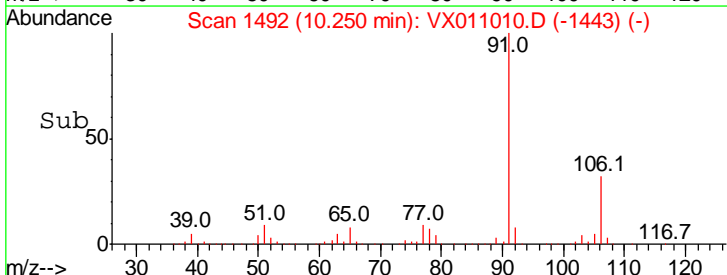
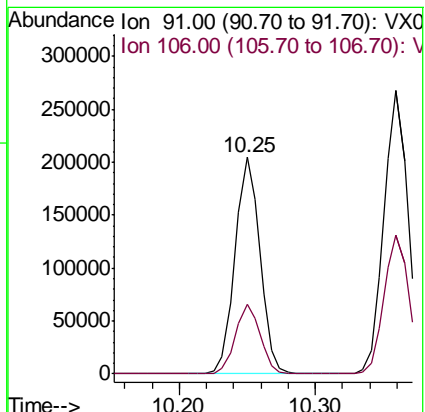
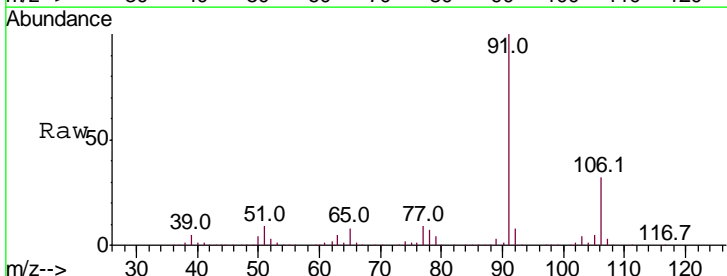
Manual Integrations
 APPROVED

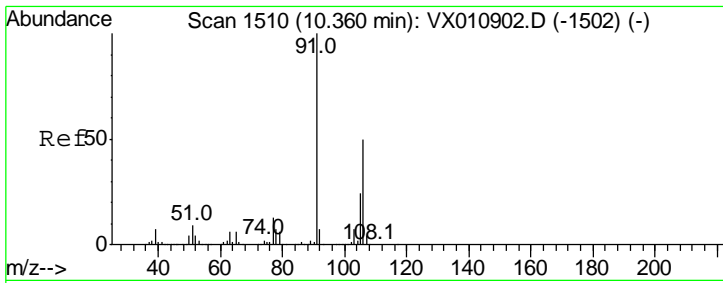
MMDadoda
 7/22/2019 5:23:41 PM



#67
 Ethyl Benzene
 Concen: 21.497 ug/l
 RT: 10.25 min Scan# 1492
 Delta R.T. -0.00 min
 Lab File: VX011010.D
 Acq: 19 Jul 2019 18:11

Tgt Ion	Resp	Lower	Upper
91	100		
106	32.4	25.4	38.2



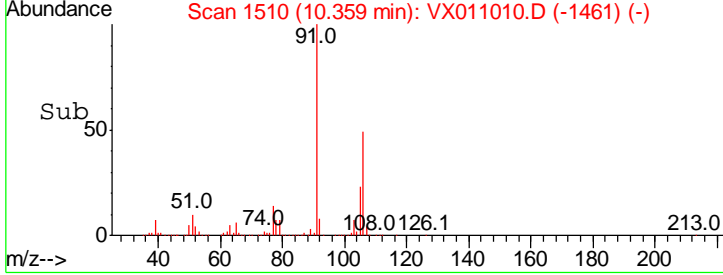
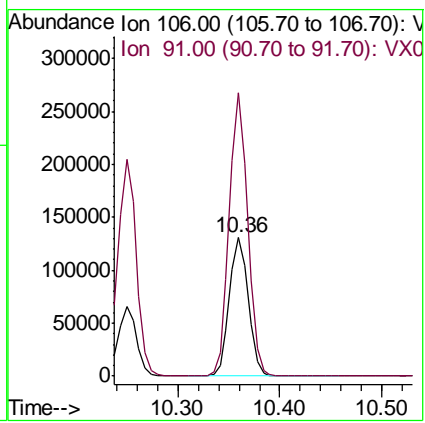
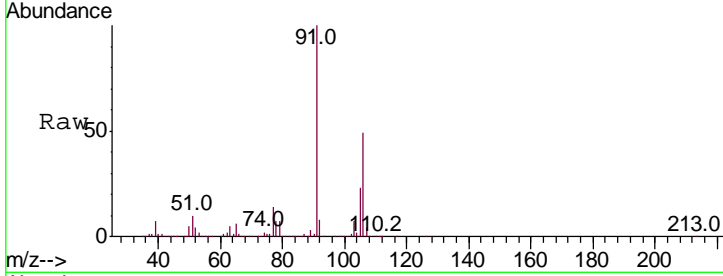


#68
 m/p-Xylenes
 Concen: 35.915 ug/l
 RT: 10.36 min Scan# 1510
 Delta R.T. -0.00 min
 Lab File: VX011010.D
 Acq: 19 Jul 2019 18:11

Instrument : MSVOA_X
 Client Sampled : FL-0630DL

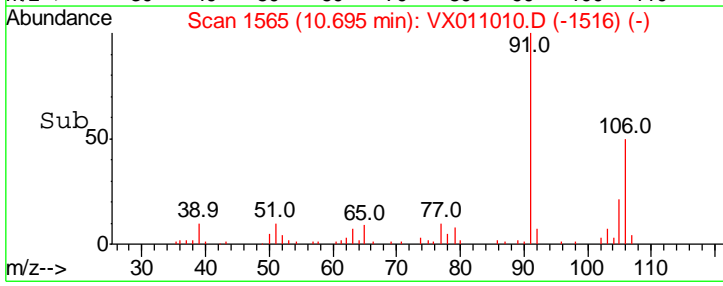
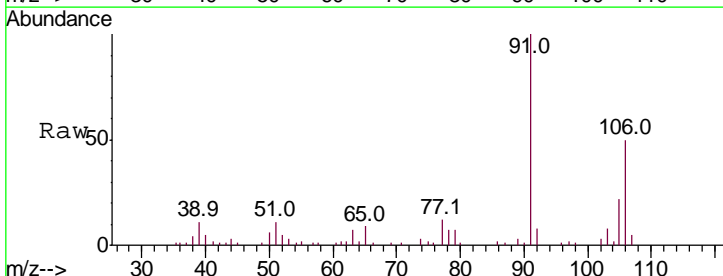
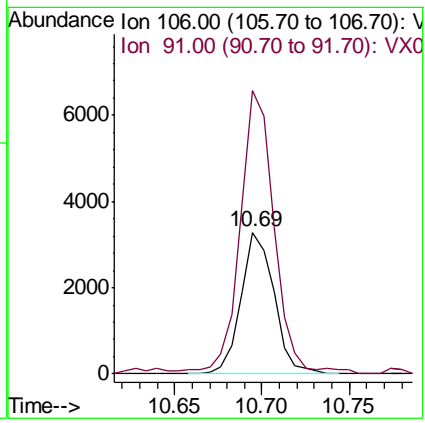
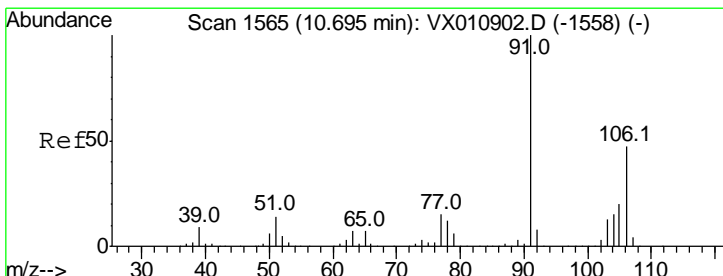
Tgt Ion	Resp	Lower	Upper
106	167878		
106	100		
91	199.1	160.1	240.1

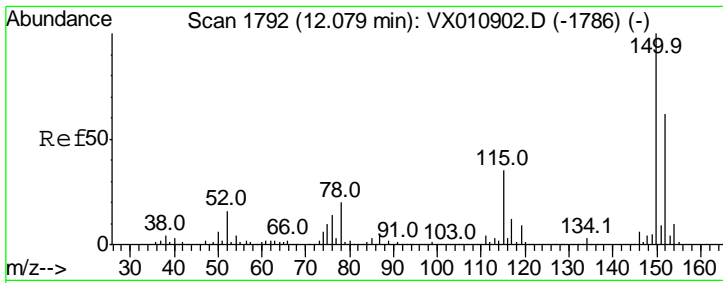
Manual Integrations APPROVED
 MMDadoda
 7/22/2019 5:23:41 PM



#69
 o-Xylene
 Concen: 0.947 ug/l
 RT: 10.69 min Scan# 1565
 Delta R.T. -0.00 min
 Lab File: VX011010.D
 Acq: 19 Jul 2019 18:11

Tgt Ion	Resp	Lower	Upper
106	4321		
106	100		
91	207.3	105.1	315.3



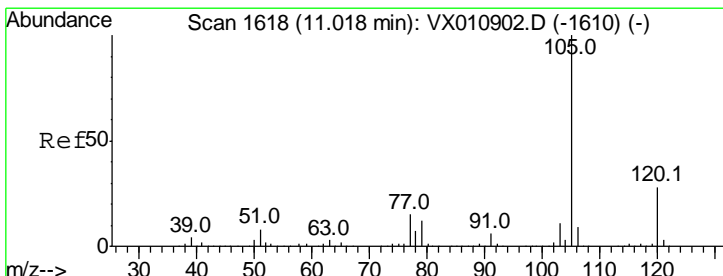
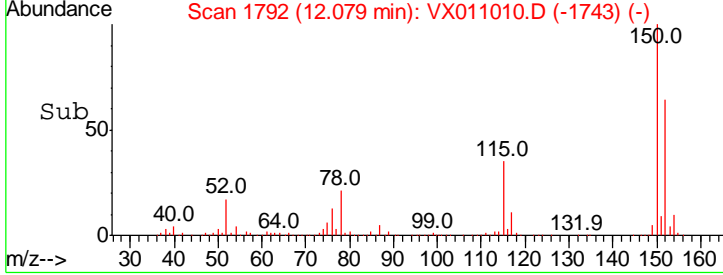
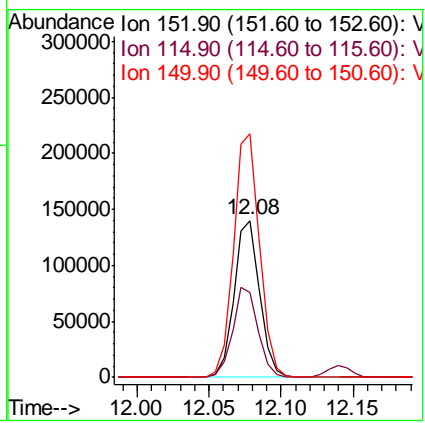
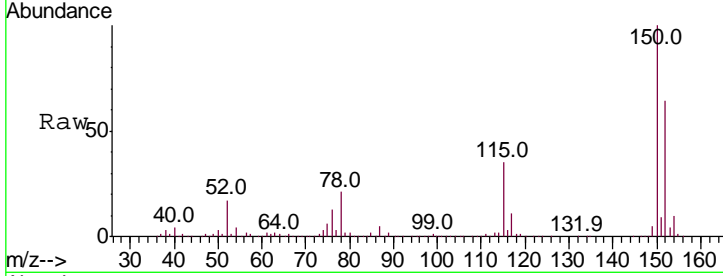


#72
 1,4-Dichlorobenzene-d4
 Concen: 50.000 ug/l
 RT: 12.08 min Scan# 1792
 Delta R.T. -0.00 min
 Lab File: VX011010.D
 Acq: 19 Jul 2019 18:11

Instrument : MSVOA_X
 Client Sampled : FL-0630DL

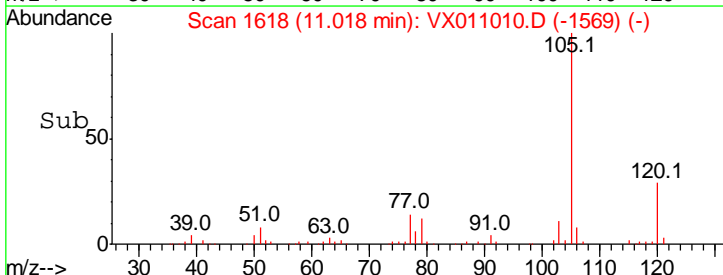
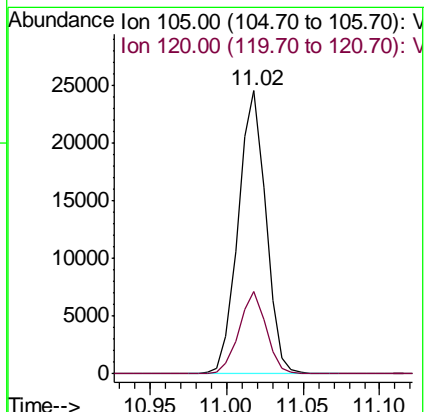
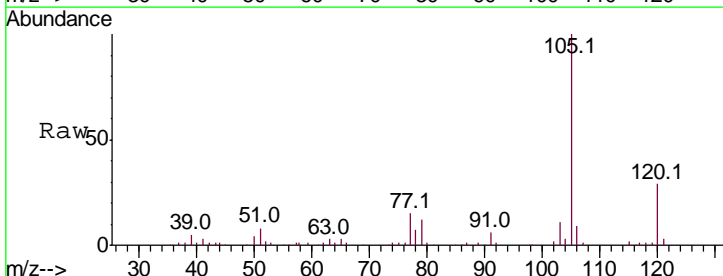
Tgt Ion	Resp	Lower	Upper
152	173011		
152	100		
115	56.9	39.7	119.1
150	158.0	0.0	345.6

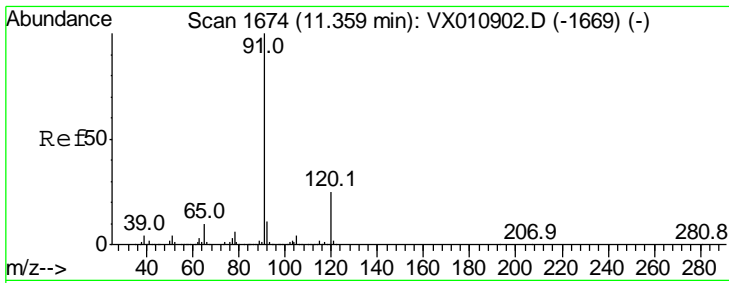
Manual Integrations
APPROVED
 MMDadoda
 7/22/2019 5:23:41 PM



#73
 Isopropylbenzene
 Concen: 2.636 ug/l
 RT: 11.02 min Scan# 1618
 Delta R.T. -0.00 min
 Lab File: VX011010.D
 Acq: 19 Jul 2019 18:11

Tgt Ion	Resp	Lower	Upper
105	30817		
105	100		
120	28.4	13.7	41.1



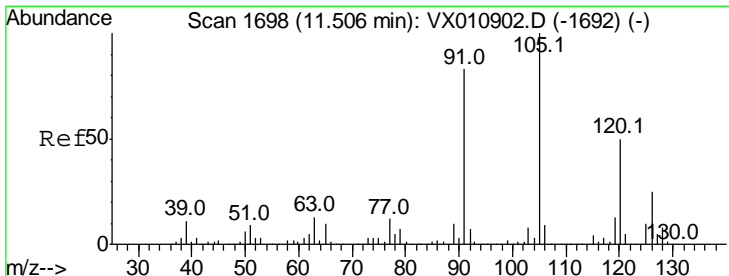
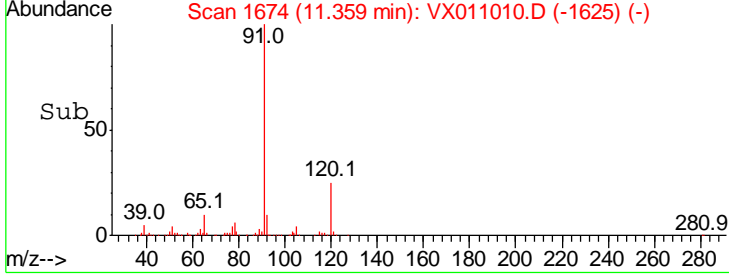
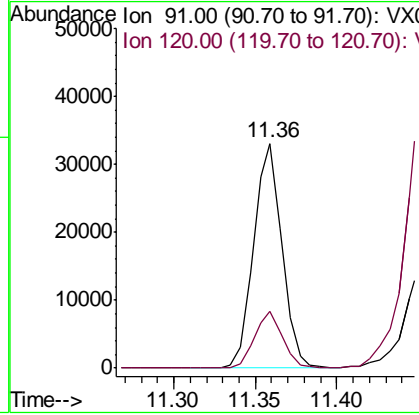
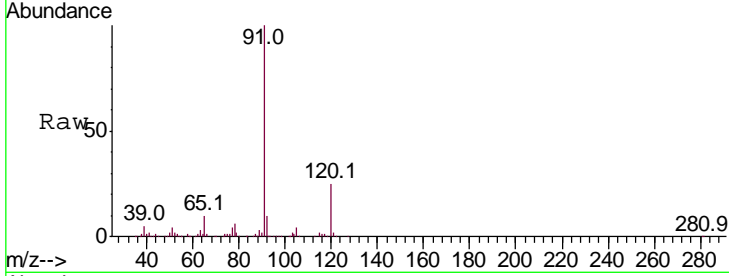


#78
 n-propylbenzene
 Concen: 3.108 ug/l
 RT: 11.36 min Scan# 1674
 Delta R.T. -0.00 min
 Lab File: VX011010.D
 Acq: 19 Jul 2019 18:11

Instrument : MSVOA_X
 Client Sampled : FL-0630DL

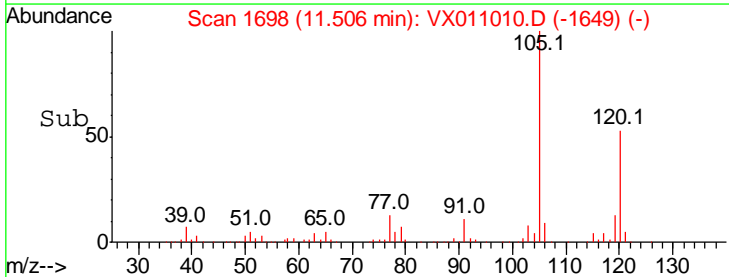
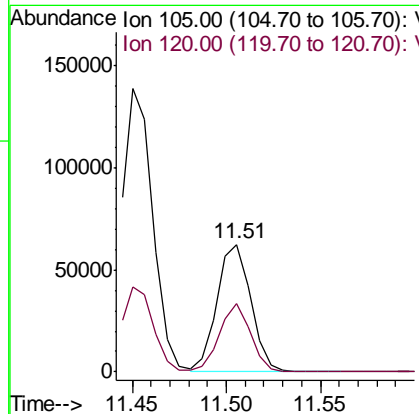
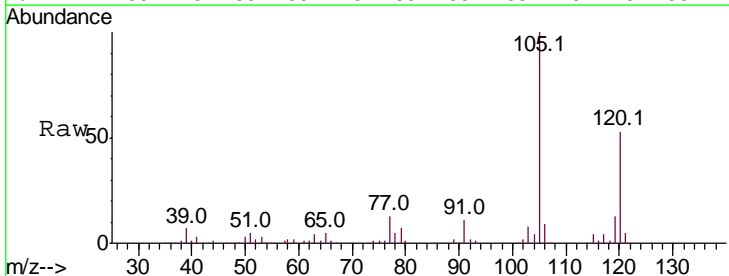
Tgt Ion	Resp	Lower	Upper
91	40145		
120	25.2	12.3	36.8

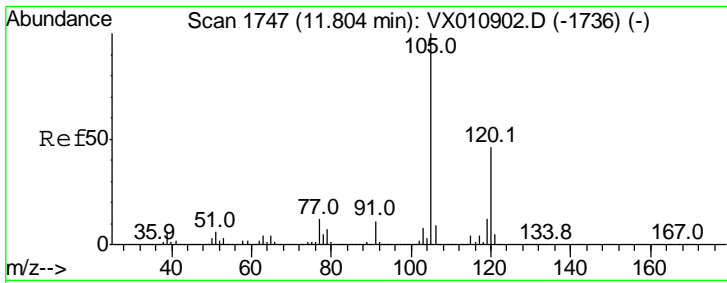
Manual Integrations
APPROVED
 MMDadoda
 7/22/2019 5:23:41 PM



#80
 1,3,5-Trimethylbenzene
 Concen: 7.959 ug/l
 RT: 11.51 min Scan# 1698
 Delta R.T. -0.00 min
 Lab File: VX011010.D
 Acq: 19 Jul 2019 18:11

Tgt Ion	Resp	Lower	Upper
105	77746		
120	50.0	24.6	73.8



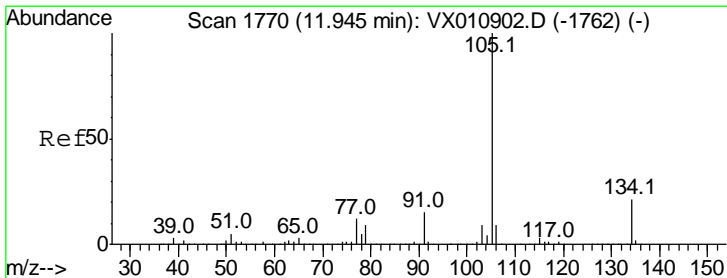
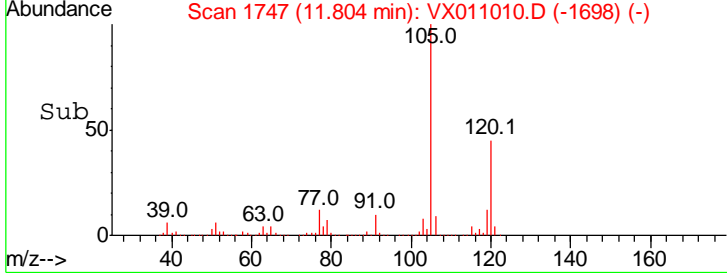
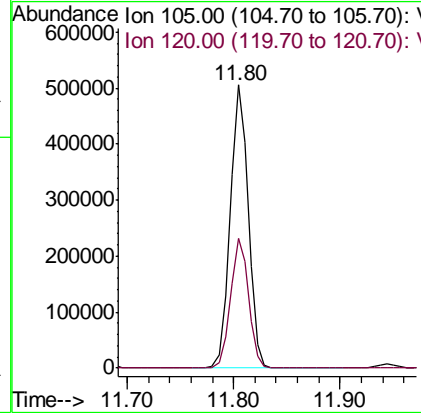
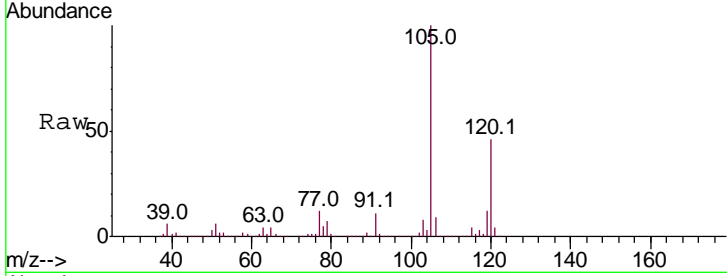


#84
 1,2,4-Trimethylbenzene
 Concen: 61.049 ug/l
 RT: 11.80 min Scan# 1747
 Delta R.T. -0.00 min
 Lab File: VX011010.D
 Acq: 19 Jul 2019 18:11

Instrument : MSVOA_X
 ClientSampled : FL-0630DL

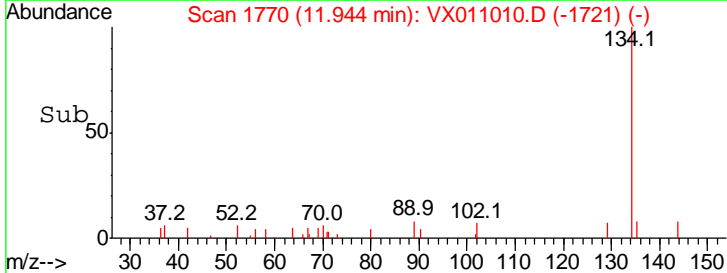
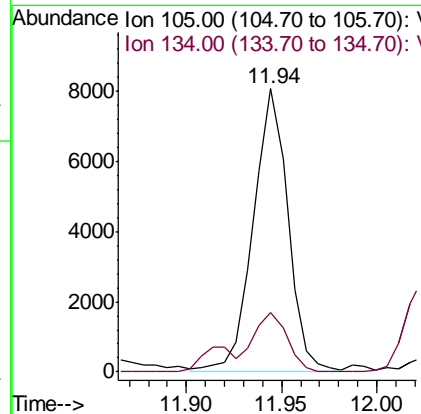
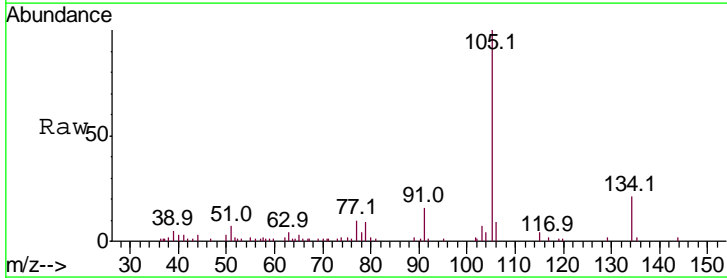
Tgt Ion	Resp	Lower	Upper
105	100		
120	45.7	22.9	68.5

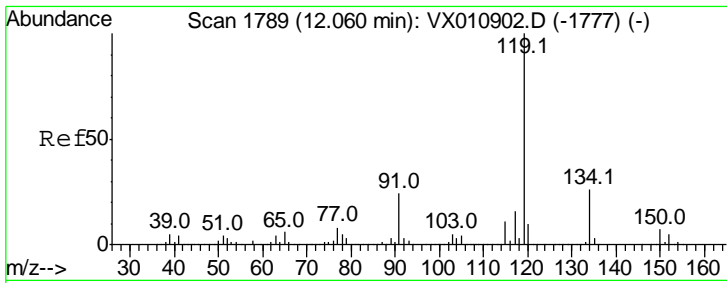
Manual Integrations APPROVED
 MMDadoda
 7/22/2019 5:23:41 PM



#85
 sec-Butylbenzene
 Concen: 0.898 ug/l m
 RT: 11.94 min Scan# 1770
 Delta R.T. -0.00 min
 Lab File: VX011010.D
 Acq: 19 Jul 2019 18:11

Tgt Ion	Resp	Lower	Upper
105	100		
134	0.0	10.4	31.4#





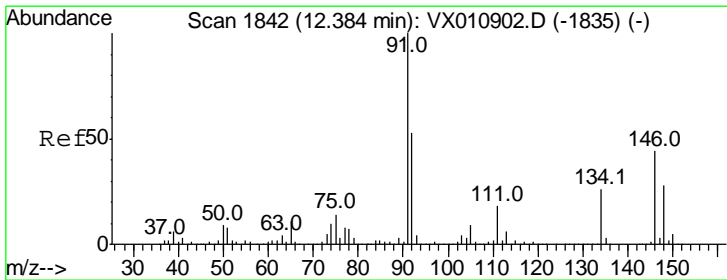
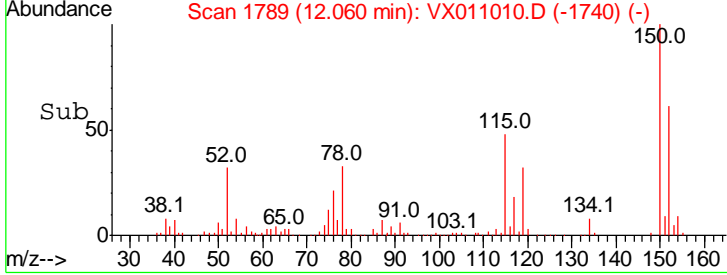
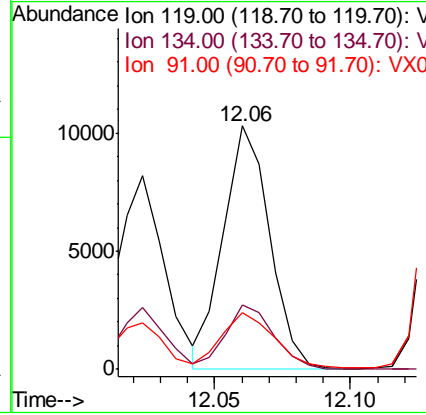
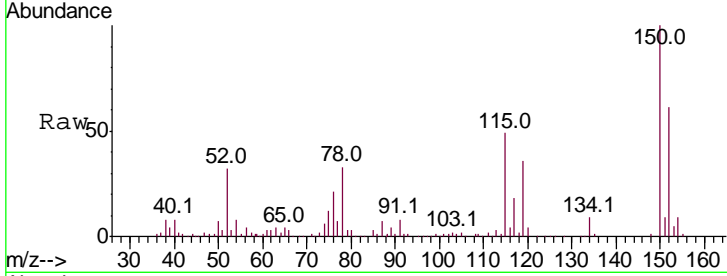
#86
 p-Isopropyltoluene
 Concen: 1.176 ug/l
 RT: 12.06 min Scan# 1789
 Delta R.T. -0.00 min
 Lab File: VX011010.D
 Acq: 19 Jul 2019 18:11

Instrument : MSVOA_X
 ClientSampled : FL-0630DL

Tgt Ion	Resp	Lower	Upper
119	100		
134	27.8	13.4	40.1
91	26.4	11.8	35.4

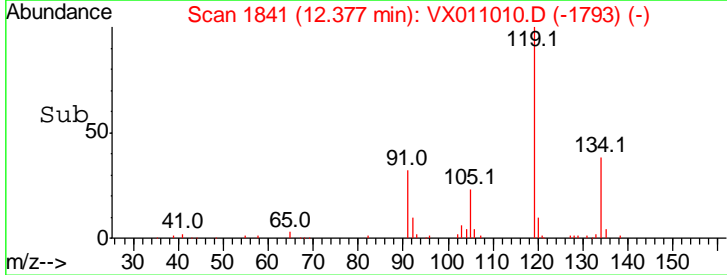
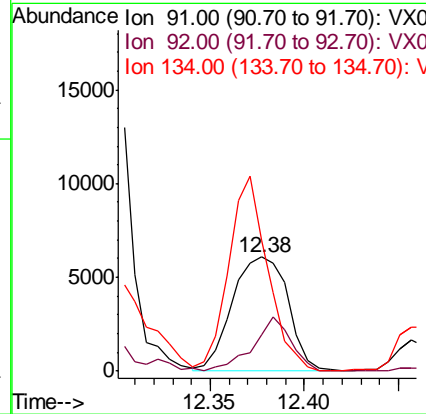
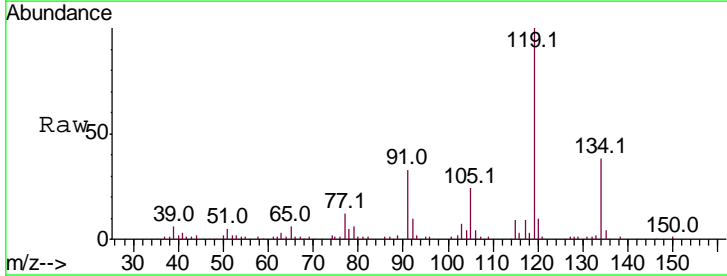
Manual Integrations
 APPROVED

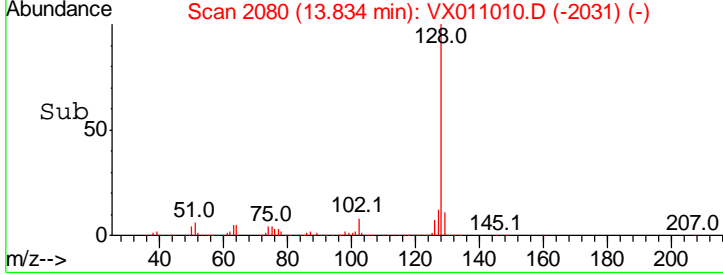
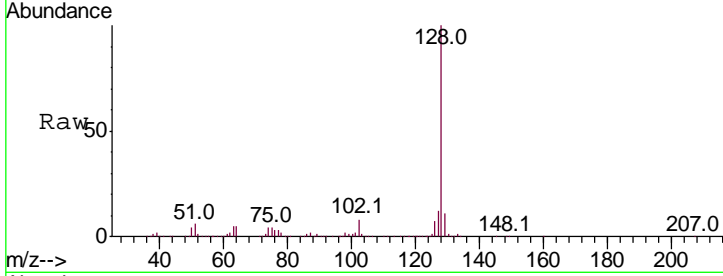
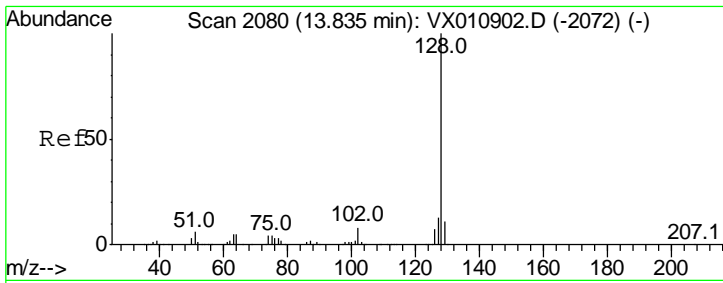
MMDadoda
 7/22/2019 5:23:41 PM



#89
 n-Butylbenzene
 Concen: 1.403 ug/l
 RT: 12.38 min Scan# 1841
 Delta R.T. -0.01 min
 Lab File: VX011010.D
 Acq: 19 Jul 2019 18:11

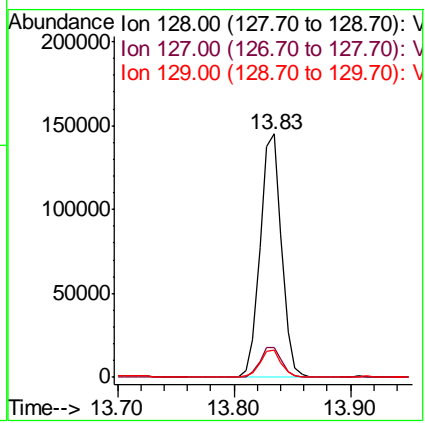
Tgt Ion	Resp	Lower	Upper
91	100		
92	32.0	26.2	78.5
134	119.8	13.8	41.3#





#95
 Naphthalene
 Concen: 16.767 ug/l
 RT: 13.83 min Scan# 2080
 Delta R.T. -0.00 min
 Lab File: VX011010.D
 Acq: 19 Jul 2019 18:11

Tot Ion	Ratio	Lower	Upper
128	100		
127	12.8	10.4	15.6
129	11.1	8.9	13.3



Instrument : MSVOA_X
 Client Sampled : FL-0630DL

Manual Integrations
APPROVED
 MMDadoda
 7/22/2019 5:23:41 PM