

Data Path : Z:\voasrv\HPCHEM1\MSVOA_X\Data\VX072024\
 Data File : VX042412.D
 Acq On : 19 Jul 2024 19:15
 Operator : JC/MD
 Sample : P3238-15ME
 Misc : 4.93g/5.0mL/100uL/5.0mL/MSVOA_X/MEOH
 ALS Vial : 10 Sample Multiplier: 1

Instrument :
 MSVOA_X
ClientSampleId :
 A4BZ5ME

Quant Time: Jul 20 01:57:24 2024
 Quant Method : Z:\voasrv\HPCHEM1\MSVOA_X\Method\SFAMXML070324WMA.M
 Quant Title : VOC Analysis
 QLast Update : Sat Jul 20 01:45:50 2024
 Response via : Initial Calibration

Manual Integrations
APPROVED
 Reviewed By :John Carlone 07/22/2024
 Supervised By :Mahesh Dadoda 07/24/2024

Compound	R.T.	QIon	Response	Conc	Units	Dev(Min)
Internal Standards						
1) 1,4-Difluorobenzene	6.757	114	245614	50.000	ug/L	0.00
28) Chlorobenzene-d5	10.055	117	221765	50.000	ug/L	0.00
58) 1,4-Dichlorobenzene-d4	12.024	152	108709	50.000	ug/L	0.00
System Monitoring Compounds						
4) Vinyl Chloride-d3	1.368	65	54589	38.184	ug/L	0.00
Spiked Amount	50.000	Range 60 - 135	Recovery =	76.360%		
7) Chloroethane-d5	1.648	69	28429m	31.583	ug/L	0.00
Spiked Amount	50.000	Range 70 - 130	Recovery =	63.160%#		
11) 1,1-Dichloroethene-d2	2.282	65	24894	39.787	ug/L	-0.01
Spiked Amount	50.000	Range 60 - 125	Recovery =	79.580%		
21) 2-Butanone-d5	4.489	46	85859	83.338	ug/L	0.03
Spiked Amount	100.000	Range 40 - 130	Recovery =	83.340%		
24) Chloroform-d	5.056	84	113476	39.477	ug/L	0.00
Spiked Amount	50.000	Range 70 - 125	Recovery =	78.960%		
26) 1,2-Dichloroethane-d4	5.952	65	72689	42.843	ug/L	0.00
Spiked Amount	50.000	Range 70 - 125	Recovery =	85.680%		
32) Benzene-d6	5.964	84	252291	44.013	ug/L	0.00
Spiked Amount	50.000	Range 70 - 125	Recovery =	88.020%		
36) 1,2-Dichloropropane-d6	7.306	67	75567	43.806	ug/L	0.00
Spiked Amount	50.000	Range 70 - 120	Recovery =	87.620%		
41) Toluene-d8	8.647	98	226194	42.345	ug/L	0.00
Spiked Amount	50.000	Range 80 - 120	Recovery =	84.680%		
43) trans-1,3-Dichloroprop...	8.952	79	27684	37.133	ug/L	0.00
Spiked Amount	50.000	Range 60 - 125	Recovery =	74.260%		
47) 2-Hexanone-d5	9.391	63	65892	84.151	ug/L	0.00
Spiked Amount	100.000	Range 45 - 130	Recovery =	84.150%		
56) 1,1,2,2-Tetrachloroeth...	11.195	84	104893	41.130	ug/L	0.00
Spiked Amount	50.000	Range 65 - 120	Recovery =	82.260%		
66) 1,2-Dichlorobenzene-d4	12.323	152	92127	43.632	ug/L	0.00
Spiked Amount	50.000	Range 80 - 120	Recovery =	87.260%		
Target Compounds						
15) Methyl Acetate	2.715	43	13825	7.742	ug/L	96

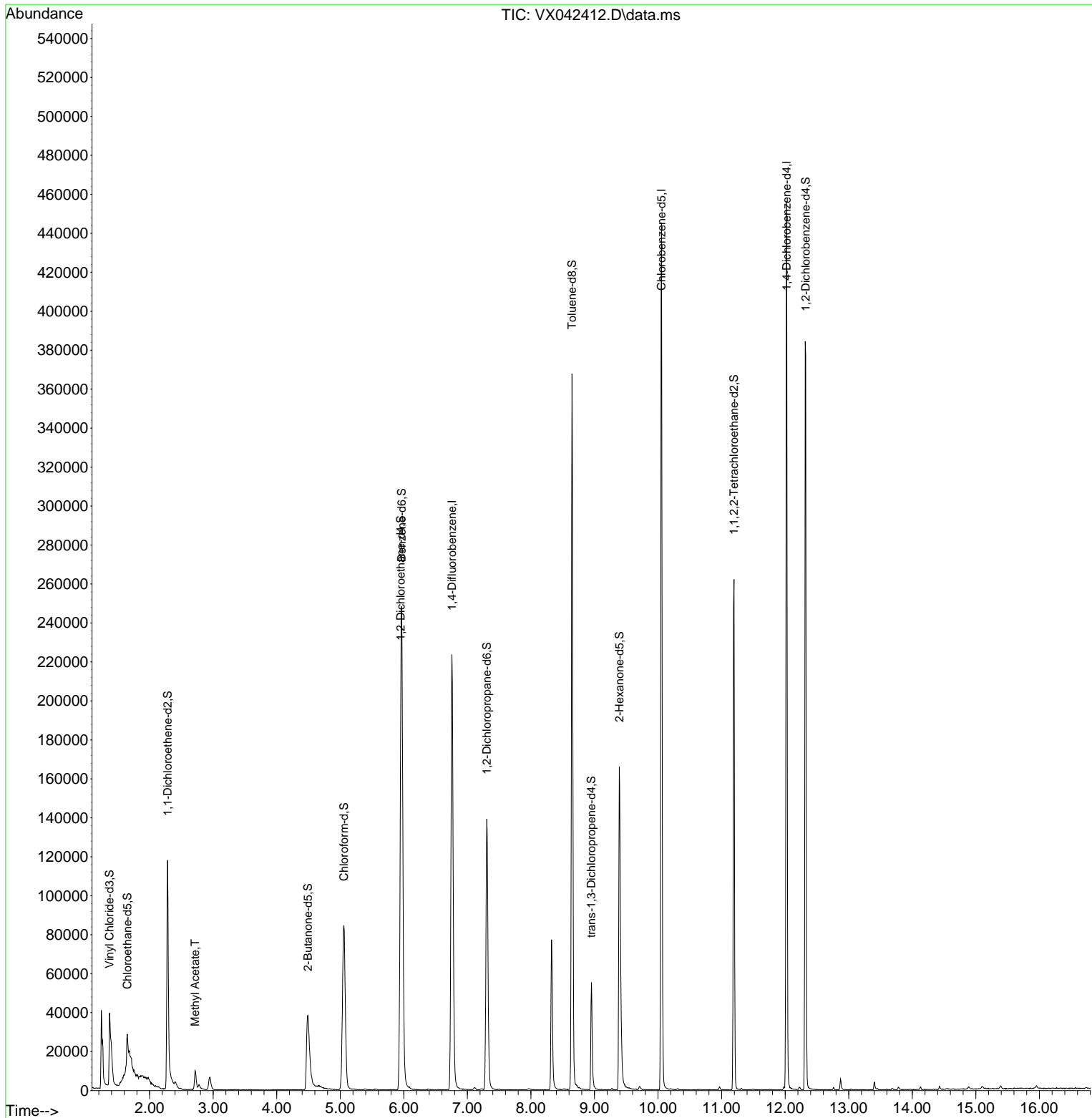
(#) = qualifier out of range (m) = manual integration (+) = signals summed

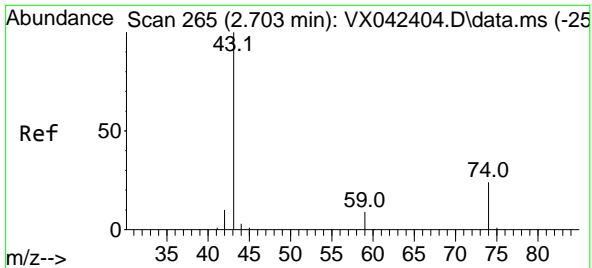
Data Path : Z:\voasrv\HPCHEM1\MSVOA_X\Data\VX072024\
 Data File : VX042412.D
 Acq On : 19 Jul 2024 19:15
 Operator : JC/MD
 Sample : P3238-15ME
 Misc : 4.93g/5.0mL/100uL/5.0mL/MSVOA_X/MEOH
 ALS Vial : 10 Sample Multiplier: 1

Instrument :
 MSVOA_X
ClientSampleId :
 A4BZ5ME

Quant Time: Jul 20 01:57:24 2024
 Quant Method : Z:\voasrv\HPCHEM1\MSVOA_X\Method\SFAMXLM070324WMA.M
 Quant Title : VOC Analysis
 QLast Update : Sat Jul 20 01:45:50 2024
 Response via : Initial Calibration

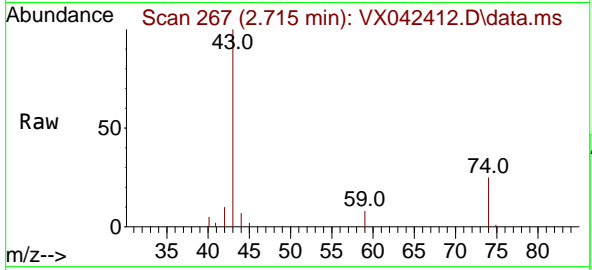
Manual Integrations
APPROVED
 Reviewed By :John Carlone 07/22/2024
 Supervised By :Mahesh Dadoda 07/24/2024





#15
 Methyl Acetate
 Concen: 7.742 ug/L
 RT: 2.715 min Scan# 20
 Delta R.T. 0.012 min
 Lab File: VX042412.D
 Acq: 19 Jul 2024 19:15

Instrument : MSVOA_X
 ClientSampleId : A4BZ5ME



Tgt Ion: 43 Resp: 1382
 Ion Ratio Lower Upper
 43 100
 74 23.1 20.1 30.1

Manual Integrations
APPROVED
 Reviewed By :John Carlone 07/22/2024
 Supervised By :Mahesh Dadoda 07/24/2024

