

Data Path : Z:\VOASRV\HPCHEM1\MSVOA\_X\DATA\VX072118\  
 Data File : VX003557.D  
 Acq On : 21 Jul 2018 16:14  
 Operator : JC/SP  
 Sample : J4014-10DL 20X  
 Misc : 5.0mL/MSVOA\_X/WATER  
 ALS Vial : 14 Sample Multiplier: 1

**Instrument :**  
 MSVOA\_X  
**ClientSampleId :**  
 RE105D2-071318DL

Quant Time: Jul 27 03:25:32 2018  
 Quant Method : Z:\VOASRV\HPCHEM1\MSVOA\_X\METHOD\82X071918W.M  
 Quant Title : SW846 8260  
 QLast Update : Thu Jul 19 17:09:44 2018  
 Response via : Initial Calibration

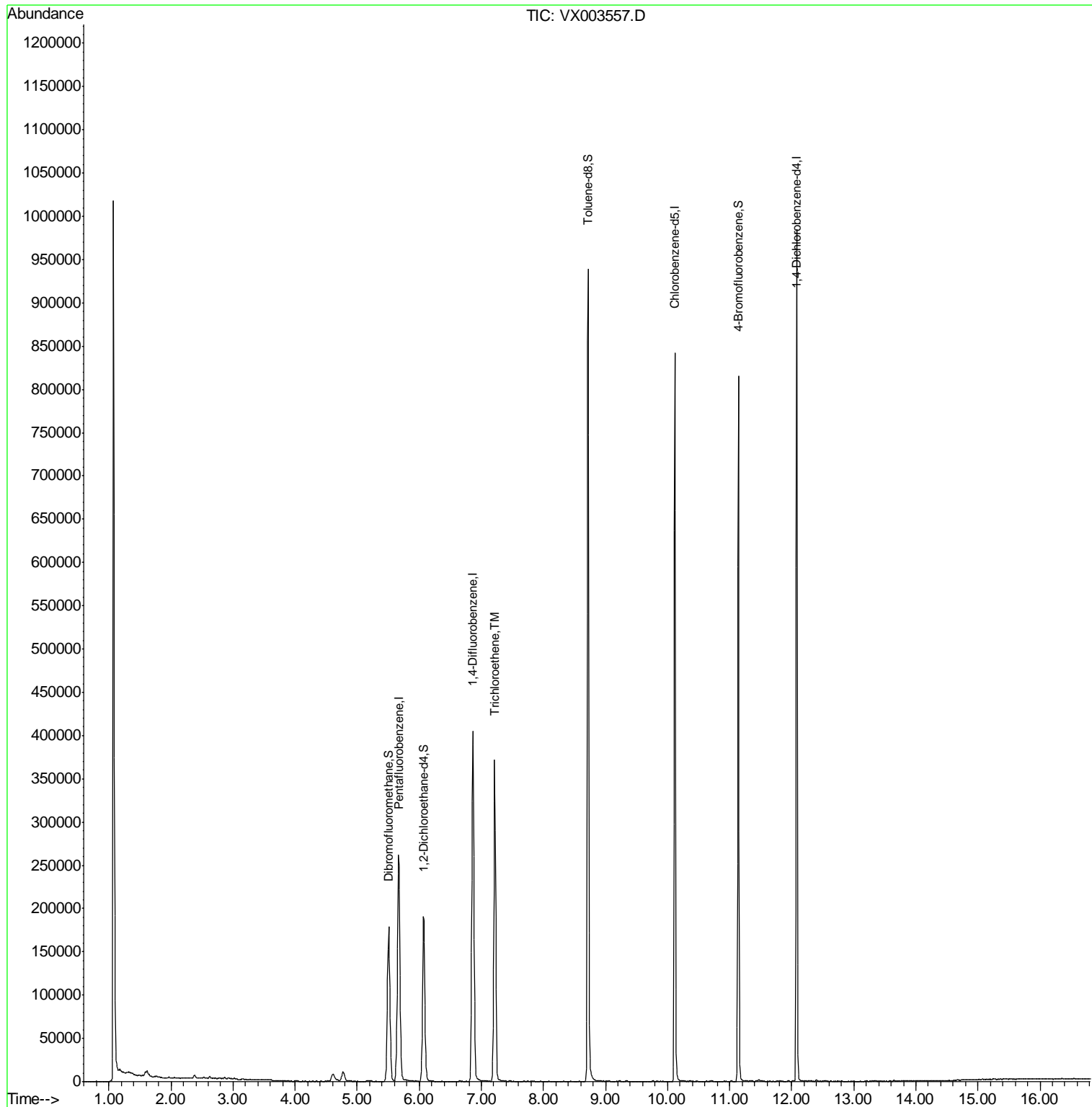
Internal Standards	R.T.	QIon	Response	Conc	Units	Dev(Min)
1) Pentafluorobenzene	5.67	168	281090	50.00	ug/l	0.00
34) 1,4-Difluorobenzene	6.86	114	426677	50.00	ug/l	0.00
63) Chlorobenzene-d5	10.12	117	395508	50.00	ug/l	0.00
72) 1,4-Dichlorobenzene-d4	12.08	152	218527	50.00	ug/l	0.00
System Monitoring Compounds						
33) 1,2-Dichloroethane-d4	6.07	65	177577	53.37	ug/l	0.00
Spiked Amount	50.000		Recovery	=	106.74%	
35) Dibromofluoromethane	5.51	113	156421	48.13	ug/l	0.00
Spiked Amount	50.000		Recovery	=	96.26%	
50) Toluene-d8	8.72	98	595218	48.73	ug/l	0.00
Spiked Amount	50.000		Recovery	=	97.46%	
62) 4-Bromofluorobenzene	11.14	95	204241	45.82	ug/l	0.00
Spiked Amount	50.000		Recovery	=	91.64%	
Target Compounds						
44) Trichloroethene	7.21	130	156782	37.798	ug/l	Qvalue 100

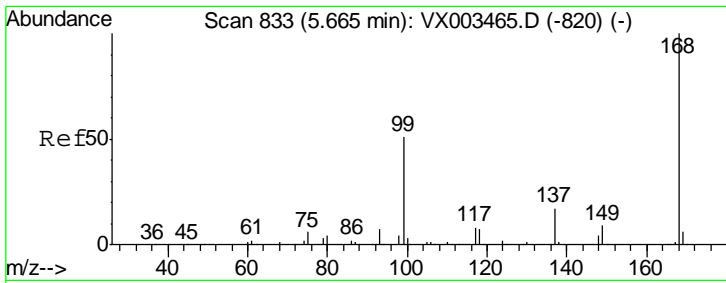
(#) = qualifier out of range (m) = manual integration (+) = signals summed

Data Path : Z:\VOASRV\HPCHEM1\MSVOA\_X\DATA\VX072118\  
 Data File : VX003557.D  
 Acq On : 21 Jul 2018 16:14  
 Operator : JC/SP  
 Sample : J4014-10DL 20X  
 Misc : 5.0mL/MSVOA\_X/WATER  
 ALS Vial : 14 Sample Multiplier: 1

Instrument :  
 MSVOA\_X  
 ClientSampled :  
 RE105D2-071318DL

Quant Time: Jul 27 03:25:32 2018  
 Quant Method : Z:\VOASRV\HPCHEM1\MSVOA\_X\METHOD\82X071918W.M  
 Quant Title : SW846 8260  
 QLast Update : Thu Jul 19 17:09:44 2018  
 Response via : Initial Calibration

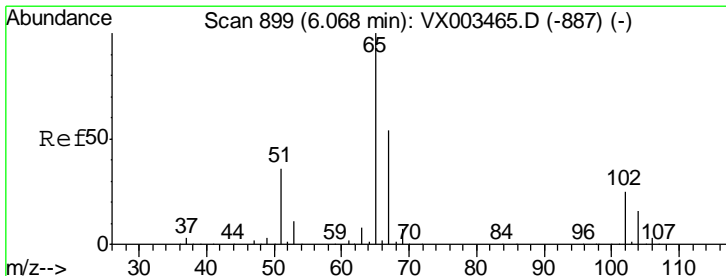
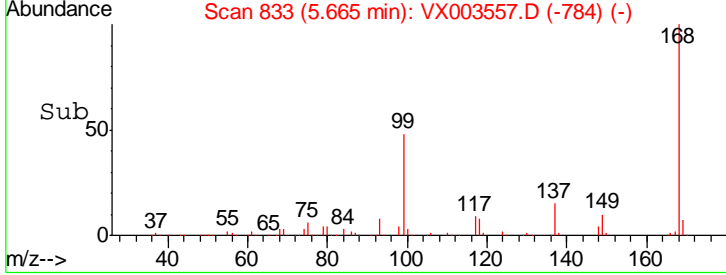
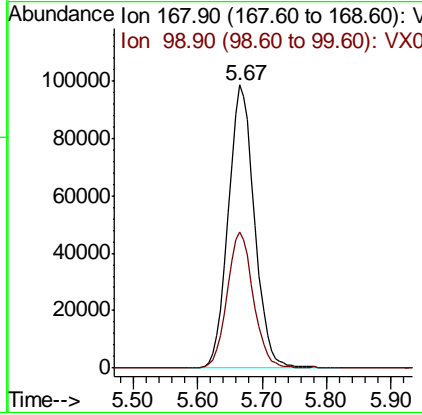
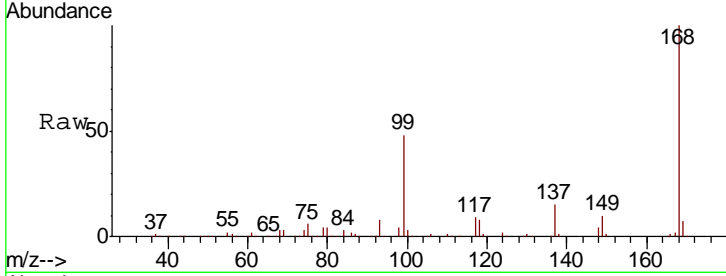




#1  
 Pentafluorobenzene  
 Concen: 50.000 ug/l  
 RT: 5.67 min Scan# 833  
 Delta R.T. -0.00 min  
 Lab File: VX003557.D  
 Acq: 21 Jul 2018 16:14

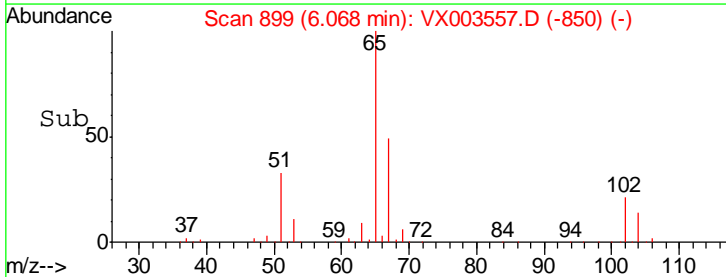
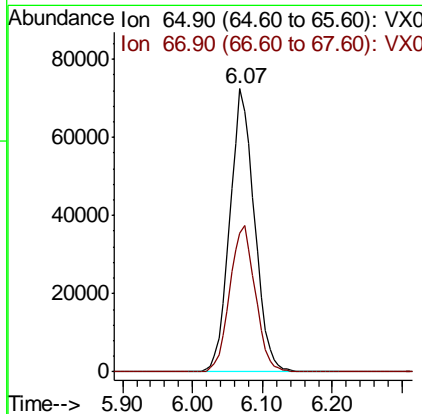
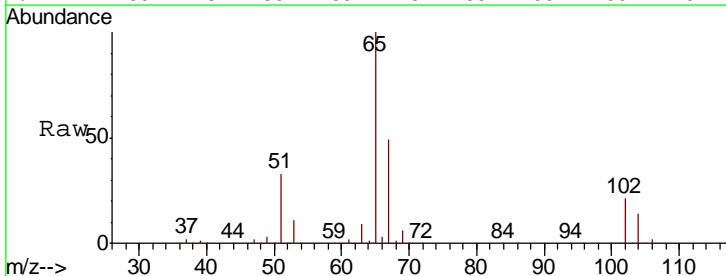
Instrument : MSVOA\_X  
 ClientSampleID : RE105D2-071318DL

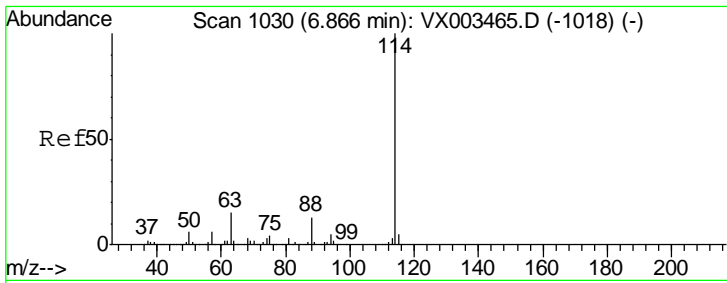
Tgt Ion: 168 Resp: 281090  
 Ion Ratio Lower Upper  
 168 100  
 99 48.3 39.3 58.9



#33  
 1,2-Dichloroethane-d4  
 Concen: 53.369 ug/l  
 RT: 6.07 min Scan# 899  
 Delta R.T. 0.00 min  
 Lab File: VX003557.D  
 Acq: 21 Jul 2018 16:14

Tgt Ion: 65 Resp: 177577  
 Ion Ratio Lower Upper  
 65 100  
 67 53.3 0.0 102.6

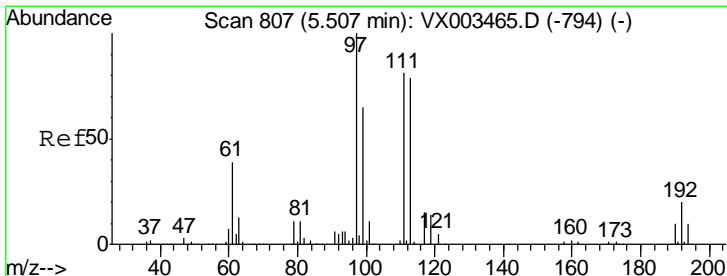
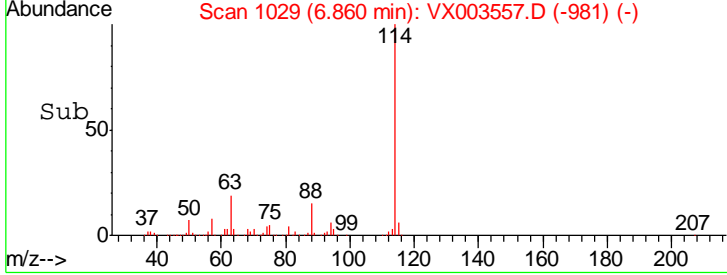
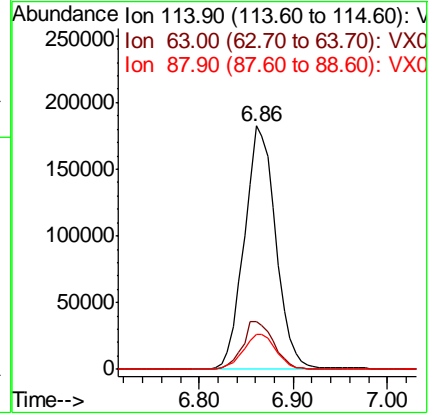
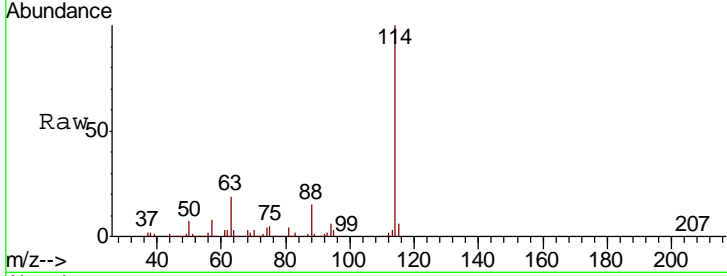




#34  
 1,4-Difluorobenzene  
 Concen: 50.000 ug/l  
 RT: 6.86 min Scan# 1029  
 Delta R.T. -0.01 min  
 Lab File: VX003557.D  
 Acq: 21 Jul 2018 16:14

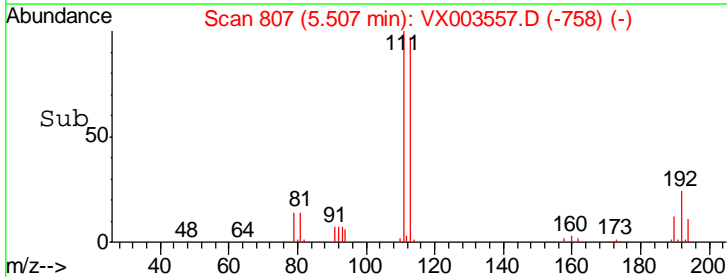
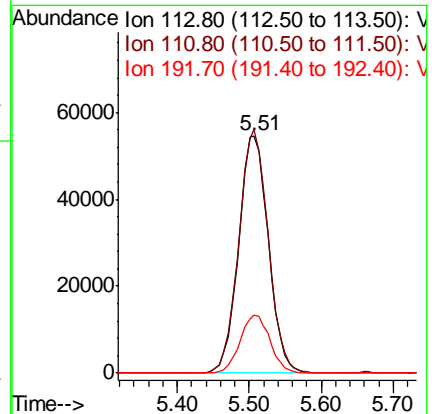
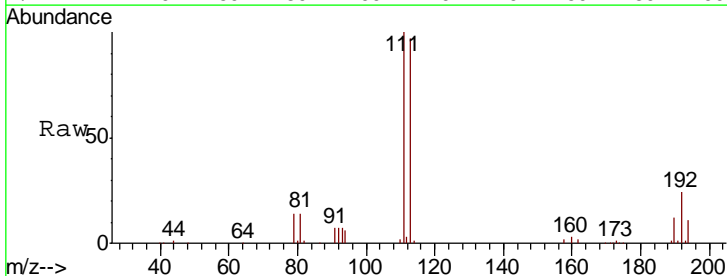
Instrument :  
 MSVOA\_X  
 ClientSampleID :  
 RE105D2-071318DL

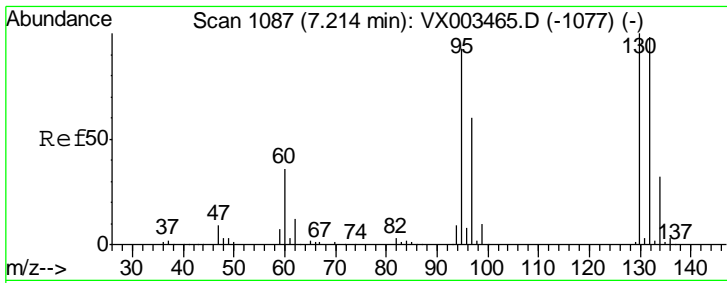
Tgt Ion	Resp	Lower	Upper
114	426677		
63	19.4	0.0	41.4
88	14.5	0.0	30.0



#35  
 Dibromofluoromethane  
 Concen: 48.131 ug/l  
 RT: 5.51 min Scan# 807  
 Delta R.T. -0.00 min  
 Lab File: VX003557.D  
 Acq: 21 Jul 2018 16:14

Tgt Ion	Resp	Lower	Upper
113	156421		
111	101.4	81.4	122.0
192	24.5	19.1	28.7

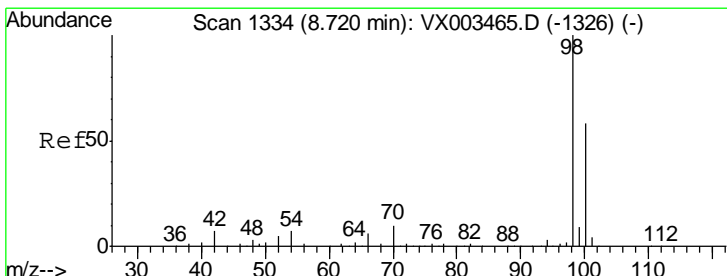
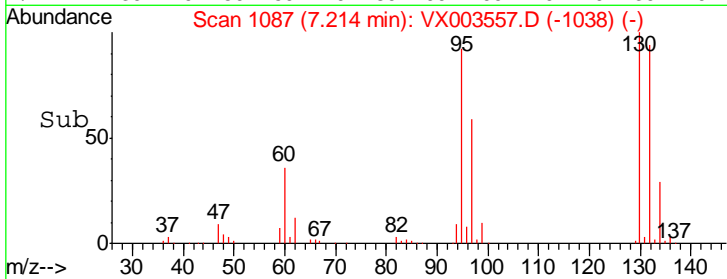
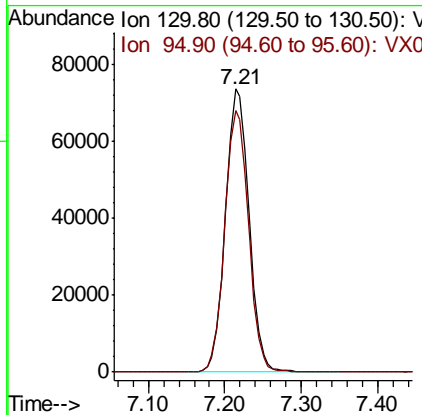
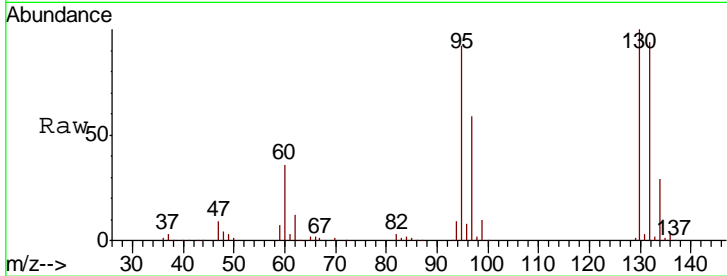




#44  
 Trichloroethene  
 Concen: 37.798 ug/l  
 RT: 7.21 min Scan# 1087  
 Delta R.T. -0.00 min  
 Lab File: VX003557.D  
 Acq: 21 Jul 2018 16:14

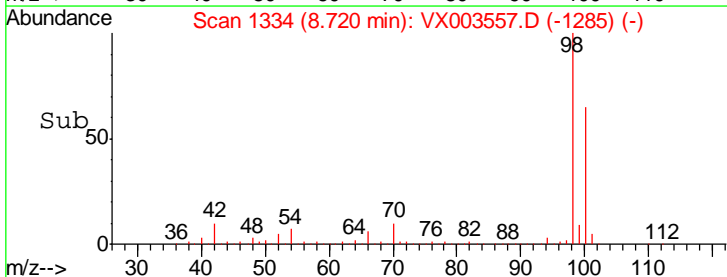
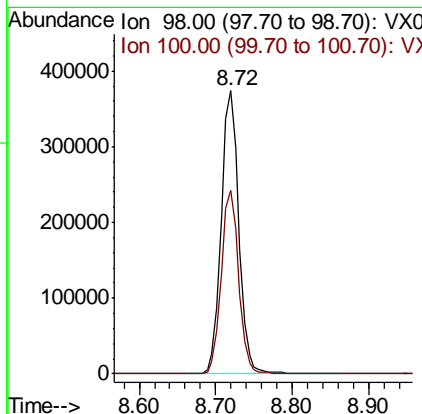
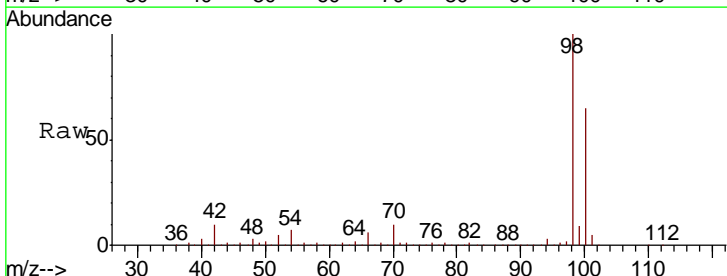
Instrument : MSVOA\_X  
 ClientSampleID : RE105D2-071318DL

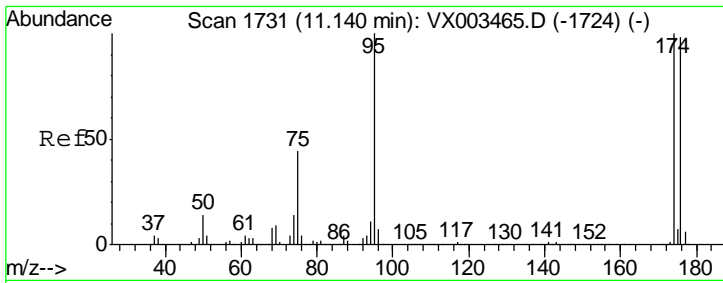
Tgt Ion: 130 Resp: 156782  
 Ion Ratio Lower Upper  
 130 100  
 95 92.3 0.0 185.4



#50  
 Toluene-d8  
 Concen: 48.728 ug/l  
 RT: 8.72 min Scan# 1334  
 Delta R.T. 0.00 min  
 Lab File: VX003557.D  
 Acq: 21 Jul 2018 16:14

Tgt Ion: 98 Resp: 595218  
 Ion Ratio Lower Upper  
 98 100  
 100 64.2 50.9 76.3

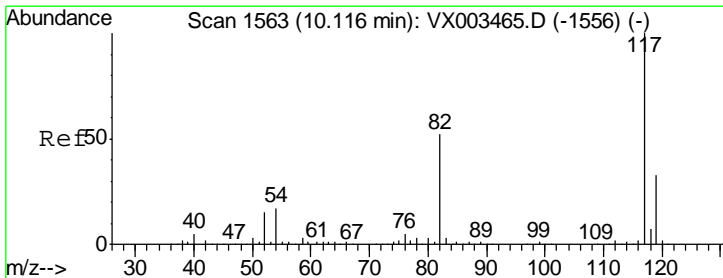
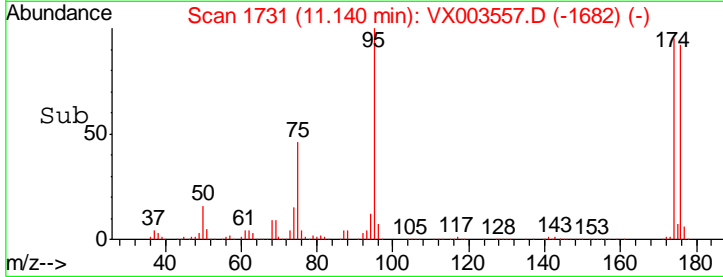
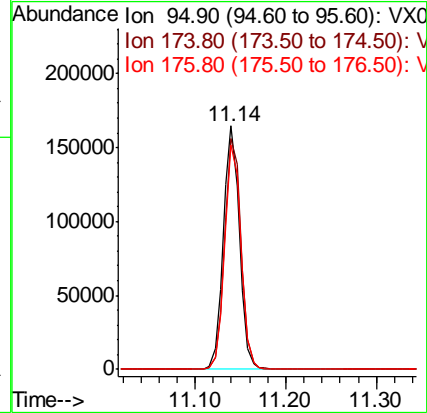
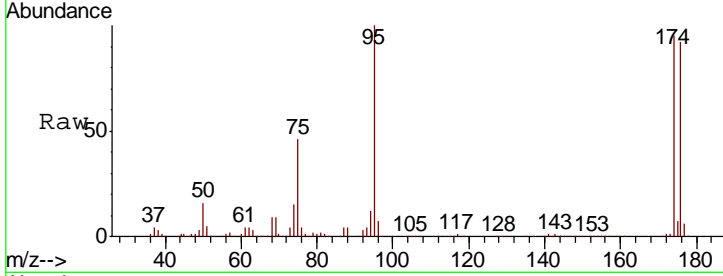




#62  
 4-Bromofluorobenzene  
 Concen: 45.817 ug/l  
 RT: 11.14 min Scan# 1731  
 Delta R.T. 0.00 min  
 Lab File: VX003557.D  
 Acq: 21 Jul 2018 16:14

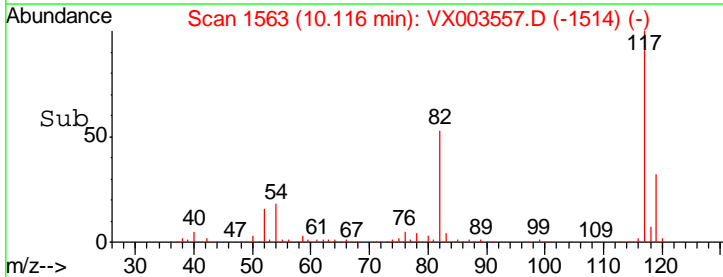
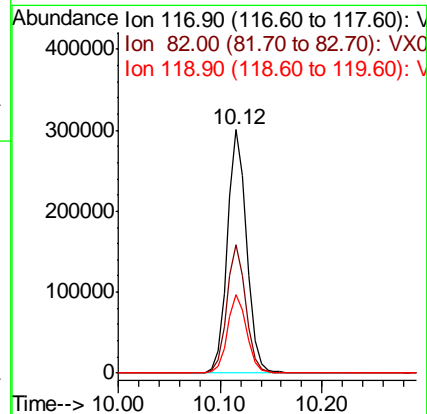
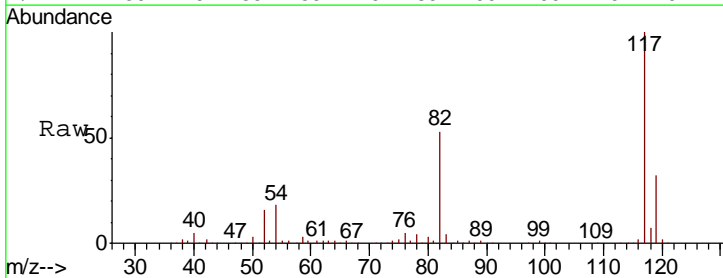
Instrument : MSVOA\_X  
 ClientSampleID : RE105D2-071318DL

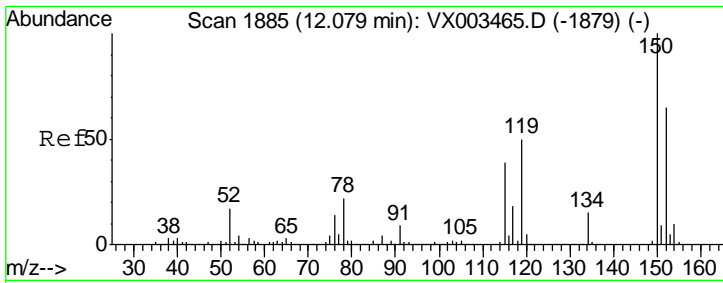
Tgt Ion	Resp	Lower	Upper
95	204241		
174	97.3	0.0	187.4
176	93.4	0.0	181.0



#63  
 Chlorobenzene-d5  
 Concen: 50.000 ug/l  
 RT: 10.12 min Scan# 1563  
 Delta R.T. -0.00 min  
 Lab File: VX003557.D  
 Acq: 21 Jul 2018 16:14

Tgt Ion	Resp	Lower	Upper
117	395508		
82	52.6	45.0	67.4
119	32.5	25.8	38.6





#72  
 1,4-Dichlorobenzene-d4  
 Concen: 50.000 ug/l  
 RT: 12.08 min Scan# 1885  
 Delta R.T. -0.00 min  
 Lab File: VX003557.D  
 Acq: 21 Jul 2018 16:14

Instrument : MSVOA\_X  
 ClientSampleID : RE105D2-071318DL

Tgt Ion	Resp	Lower	Upper
152	100		
115	54.0	40.1	120.2
150	155.5	0.0	347.2

