

Data Path : Z:\VOASRV\HPCHEM1\MSVOA X\DATA\VX072118\  
 Data File : VX003565.D  
 Acq On : 21 Jul 2018 19:46  
 Operator : JC/SP  
 Sample : J3965-06  
 Misc : 5.0mL/MSVOA X/WATER  
 ALS Vial : 22 Sample Multiplier: 1

Instrument :  
 MSVOA\_X  
 ClientSampleId :  
 LF1-0030

Integration Parameters: RTEINT.P  
 Integrator: RTE  
 Smoothing : ON Filtering: 5  
 Sampling : 1 Min Area: 3 % of largest Peak  
 Start Thrs: 0.2 Max Peaks: 100  
 Stop Thrs : 0 Peak Location: TOP

If leading or trailing edge < 100 prefer < Baseline drop else tangent >  
 Peak separation: 5

Method : Z:\VOASRV\HPCHEM1\MSVOA\_X\METHOD\82X071918W.M  
 Title : SW846 8260

Signal : TIC

peak #	R.T. min	first scan	max scan	last scan	PK TY	peak height	corr. area	corr. % max.	% of total
1	1.075	76	80	93	rBV	3073456	3489586	100.00%	31.460%
2	2.446	299	305	314	rBV	182826	307006	8.80%	2.768%
3	5.507	795	807	822	rBV2	176656	502808	14.41%	4.533%
4	5.665	822	833	849	rVV	245148	698097	20.01%	6.294%
5	6.074	889	900	924	rBV	182797	488670	14.00%	4.406%
6	6.866	1019	1030	1045	rBV2	385114	924513	26.49%	8.335%
7	8.720	1326	1334	1356	rBV	922976	1462216	41.90%	13.183%
8	10.116	1557	1563	1583	rBV	812965	1076991	30.86%	9.710%
9	11.140	1724	1731	1742	rBV	787806	972857	27.88%	8.771%
10	12.079	1880	1885	1893	rBV	930380	1169278	33.51%	10.542%

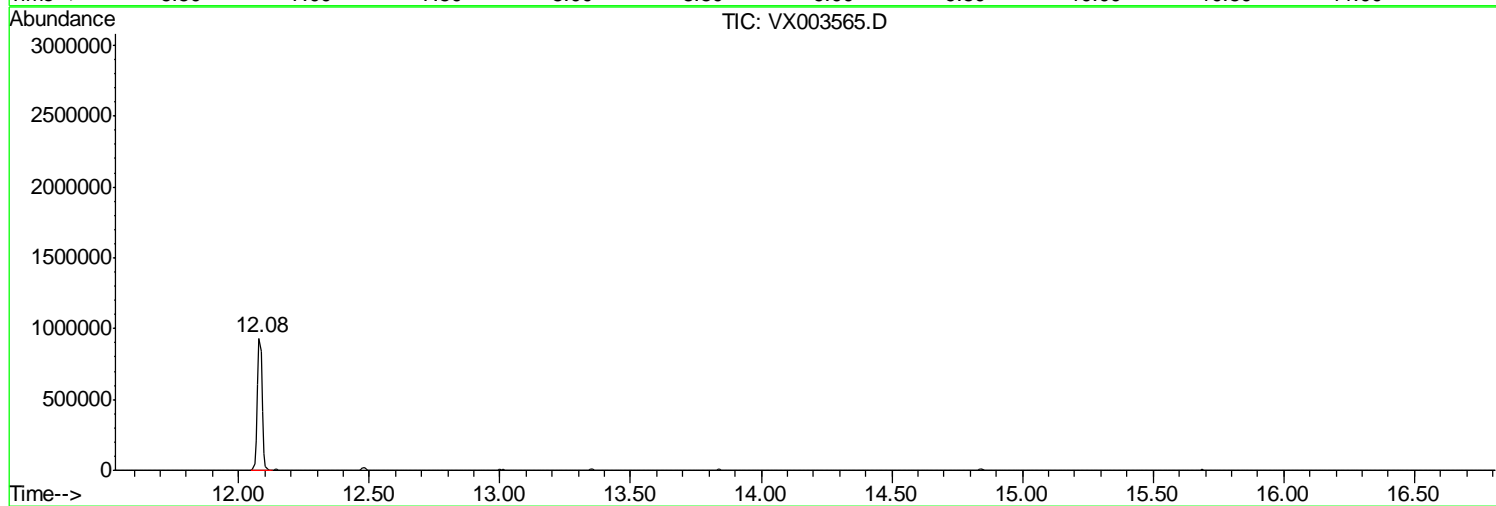
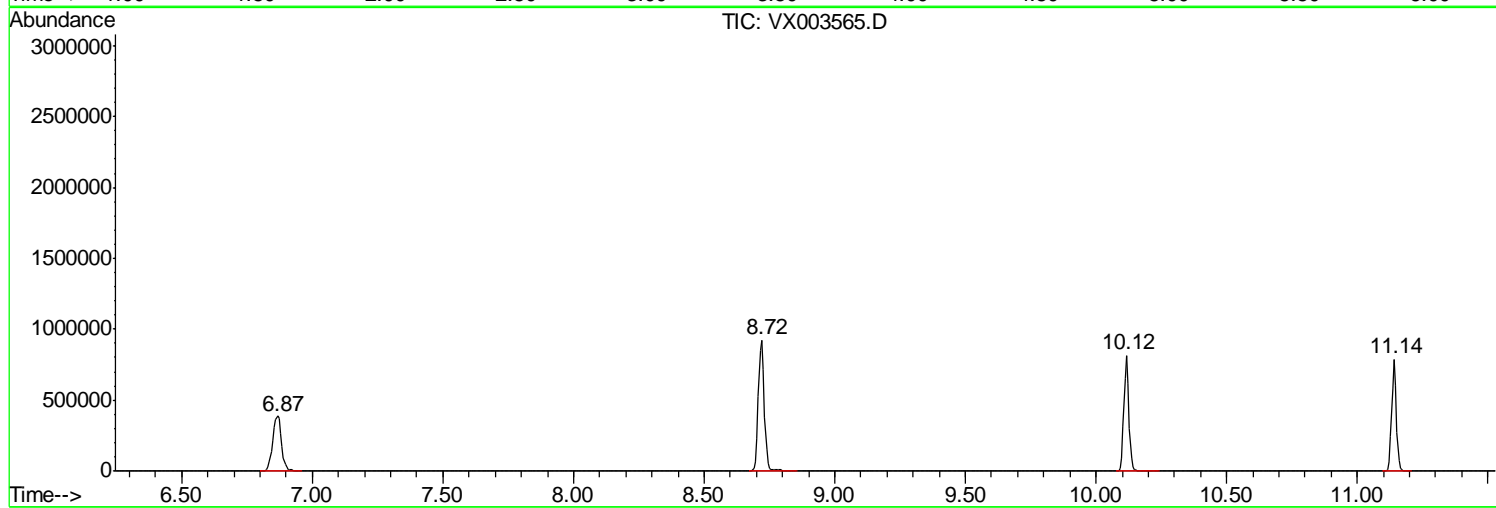
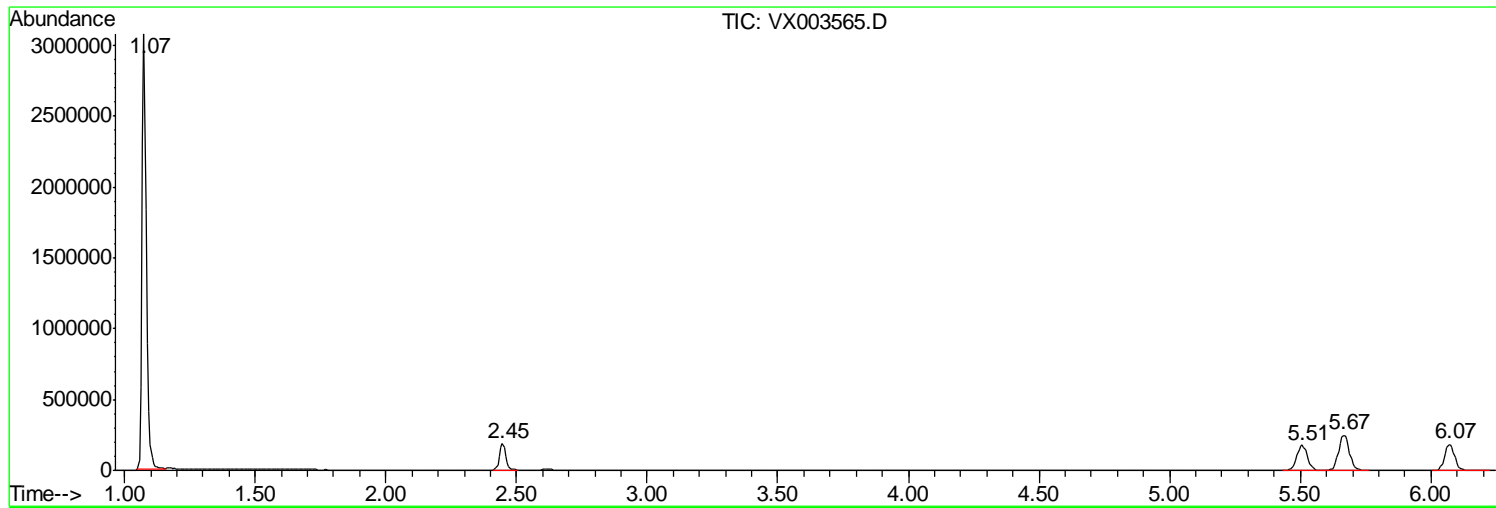
Sum of corrected areas: 11092022

Data Path : Z:\VOASRV\HPCHEM1\MSVOA X\DATA\VX072118\  
Data File : VX003565.D  
Acq On : 21 Jul 2018 19:46  
Operator : JC/SP  
Sample : J3965-06  
Misc : 5.0mL/MSVOA X/WATER  
ALS Vial : 22 Sample Multiplier: 1

Instrument :  
MSVOA\_X  
ClientSampleId :  
LF1-0030

Quant Method : Z:\VOASRV\HPCHEM1\MSVOA\_X\METHOD\82X071918W.M  
Quant Title : SW846 8260

TIC Library : C:\DATABASE\NIST11.L  
TIC Integration Parameters: LSCINT.P



Data Path : Z:\VOASRV\HPCHEM1\MSVOA\_X\DATA\VX072118\  
Data File : VX003565.D  
Acq On : 21 Jul 2018 19:46  
Operator : JC/SP  
Sample : J3965-06  
Misc : 5.0mL/MSVOA\_X/WATER  
ALS Vial : 22 Sample Multiplier: 1

Instrument :  
MSVOA\_X  
ClientSampleId :  
LF1-0030

Quant Method : Z:\VOASRV\HPCHEM1\MSVOA\_X\METHOD\82X071918W.M  
Quant Title : SW846 8260

TIC Library : C:\DATABASE\NIST11.L  
TIC Integration Parameters: LSCINT.P

No Library Search Compounds Detected

\*\*\*\*\*

Data Path : Z:\VOASRV\HPCHEM1\MSVOA\_X\DATA\VX072118\  
Data File : VX003565.D  
Acq On : 21 Jul 2018 19:46  
Operator : JC/SP  
Sample : J3965-06  
Misc : 5.0mL/MSVOA\_X/WATER  
ALS Vial : 22 Sample Multiplier: 1

Instrument :  
MSVOA\_X  
ClientSampleId :  
LF1-0030

Quant Method : Z:\VOASRV\HPCHEM1\MSVOA\_X\METHOD\82X071918W.M  
Quant Title : SW846 8260

TIC Library : C:\DATABASE\NIST11.L  
TIC Integration Parameters: LSCINT.P

TIC Top Hit name	RT	EstConc	Units	Response	--Internal Standard--			
					#	RT	Resp	Conc

---