

Data Path : Z:\VOASRV\HPCHEM1\MSVOA X\DATA\VX072220\
 Data File : VX017470.D
 Acq On : 22 Jul 2020 17:06
 Operator : JC/SP
 Sample : L3395-11
 Misc : 25.0mL/MSVOA X/WATER
 ALS Vial : 9 Sample Multiplier: 1

Instrument :
 MSVOA_X
 ClientSampleId :
 GAY19

Quant Time: Jul 23 03:02:12 2020
 Quant Method : Z:\VOASRV\HPCHEM1\MSVOA_X\METHOD\SOMXTR072120WMA.M
 Quant Title : TRACE VOA SOM01.0
 QLast Update : Thu Jul 23 02:59:48 2020
 Response via : Initial Calibration

Internal Standards	R.T.	QIon	Response	Conc	Units	Dev(Min)
1) 1,4-Difluorobenzene	6.84	114	461305	5.00	ug/L	0.00
28) Chlorobenzene-d5	10.10	117	418285	5.00	ug/L	0.00
61) 1,4-Dichlorobenzene-d4	12.07	152	207089	5.00	ug/L	0.00

System Monitoring Compounds

4) Vinyl Chloride-d3	1.38	65	121600	3.38	ug/L	0.00
Spiked Amount	5.000	Range	40 - 130	Recovery	=	67.60%
7) Chloroethane-d5	1.68	69	132820	5.36	ug/L	0.00
Spiked Amount	5.000	Range	65 - 130	Recovery	=	107.20%
11) 1,1-Dichloroethene-d2	2.34	63	187206	2.72	ug/L	0.00
Spiked Amount	5.000	Range	60 - 125	Recovery	=	54.40%#
20) 2-Butanone-d5	4.53	46	331130	49.40	ug/L	0.00
Spiked Amount	50.000	Range	40 - 130	Recovery	=	98.80%
24) Chloroform-d	5.15	84	257512	4.30	ug/L	0.00
Spiked Amount	5.000	Range	70 - 125	Recovery	=	86.00%
26) 1,2-Dichloroethane-d4	6.04	65	151218	4.41	ug/L	0.01
Spiked Amount	5.000	Range	70 - 130	Recovery	=	88.20%
32) Benzene-d6	6.06	84	509087	4.96	ug/L	0.02
Spiked Amount	5.000	Range	70 - 125	Recovery	=	99.20%
36) 1,2-Dichloropropane-d6	7.37	67	145219	4.81	ug/L	0.00
Spiked Amount	5.000	Range	60 - 140	Recovery	=	96.20%
41) Toluene-d8	8.70	98	511015	5.16	ug/L	0.00
Spiked Amount	5.000	Range	70 - 130	Recovery	=	103.20%
45) trans-1,3-Dichloropropene-	8.98	79	189559	14.31	ug/L	-0.02
Spiked Amount	5.000	Range	55 - 130	Recovery	=	286.20%#
48) 2-Hexanone-d5	9.43	63	296016	63.05	ug/L	0.00
Spiked Amount	50.000	Range	45 - 130	Recovery	=	126.10%
59) 1,1,2,2-Tetrachloroethane-	11.24	84	132932	5.64	ug/L	0.01
Spiked Amount	5.000	Range	65 - 120	Recovery	=	112.80%
65) 1,2-Dichlorobenzene-d4	12.37	152	174492	4.98	ug/L	0.00
Spiked Amount	5.000	Range	80 - 120	Recovery	=	99.60%

Target Compounds

Target Compounds	R.T.	QIon	Response	Conc	Units	Ovalue
3) Chloromethane	1.28	50	42161	0.894	ug/L #	68
5) Vinyl chloride	1.39	62	19974	0.444	ug/L	90
13) Acetone	2.37	43	2126790	393.243	ug/L	54
14) Carbon disulfide	2.55	76	41367	0.374	ug/L #	95
15) Methyl Acetate	2.75	43	1530999	97.246	ug/L #	55
16) Methylene chloride	2.76	84	822603	18.342	ug/L #	4
17) Methyl tert-butyl Ether	3.17	73	126586	1.628	ug/L #	1
18) trans-1,2-Dichloroethene	3.14	96	4452	0.128	ug/L #	1
19) 1,1-Dichloroethane	3.65	63	151878	2.482	ug/L #	1
21) 2-Butanone	4.64	43	182808	21.219	ug/L	97
22) cis-1,2-Dichloroethene	4.57	96	171559	4.996	ug/L #	99
25) Chloroform	5.27	83	1809741	28.163	ug/L #	21
27) 1,2-Dichloroethane	6.14	62	996120	24.100	ug/L #	75
29) 1,1,1-Trichloroethane	5.45	97	6691	0.119	ug/L #	1
30) Cyclohexane	5.57	56	18658696	410.887	ug/L	92
34) Trichloroethene	7.24	95	480955	14.471	ug/L #	17
35) Methylcyclohexane	7.45	83	9386987	208.739	ug/L	89

Data Path : Z:\VOASRV\HPCHEM1\MSVOA X\DATA\VX072220\
 Data File : VX017470.D
 Acq On : 22 Jul 2020 17:06
 Operator : JC/SP
 Sample : L3395-11
 Misc : 25.0mL/MSVOA X/WATER
 ALS Vial : 9 Sample Multiplier: 1

Instrument :
 MSVOA_X
 ClientSampleId :
 GAY19

Quant Time: Jul 23 03:02:12 2020
 Quant Method : Z:\VOASRV\HPCHEM1\MSVOA_X\METHOD\SOMXTR072120WMA.M
 Quant Title : TRACE VOA SOM01.0
 QLast Update : Thu Jul 23 02:59:48 2020
 Response via : Initial Calibration

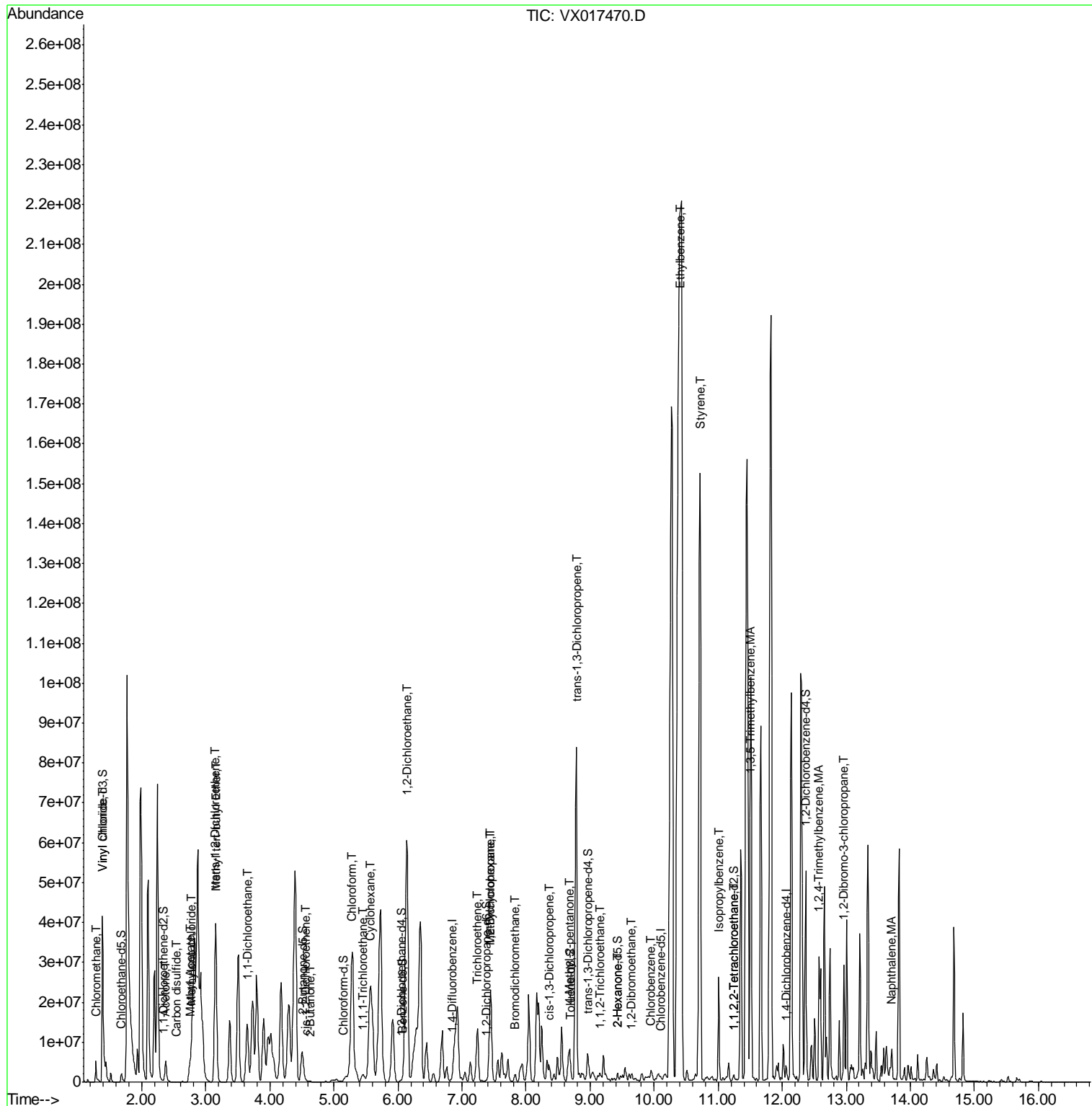
Internal Standards	R.T.	QIon	Response	Conc	Units	Dev(Min)
37) 1,2-Dichloropropane	7.45	63	153748	4.964	ug/L #	90
38) Bromodichloromethane	7.83	83	86582	2.087	ug/L #	31
39) cis-1,3-Dichloropropene	8.37	75	9072	0.203	ug/L #	1
40) 4-Methyl-2-pentanone	8.67	43	947306	52.304	ug/L #	72
43) 1,3,5-Trimethylbenzene	11.49	105	2305671	20.035	ug/L #	1
44) 1,2,4-Trimethylbenzene	12.57	105	2810209	24.663	ug/L	88
46) trans-1,3-Dichloropropene	8.79	75	757543	19.661	ug/L #	1
47) 1,1,2-Trichloroethane	9.15	97	703049	33.175	ug/L #	20
50) 2-Hexanone	9.43	43	383683	29.022	ug/L #	39
52) 1,2-Dibromoethane	9.64	107	7016	0.334	ug/L #	1
53) Chlorobenzene	9.95	112	29609	0.352	ug/L #	74
54) Ethylbenzene	10.40	91	3070043	22.919	ug/L #	68
57) Styrene	10.72	104	3627190	41.979	ug/L #	1
58) Isopropylbenzene	11.01	105	12488416	93.141	ug/L	92
60) 1,1,2,2-Tetrachloroethane	11.24	83	33575	1.331	ug/L #	51
67) 1,2-Dibromo-3-chloropropan	12.96	75	101493	18.674	ug/L #	6
70) Naphthalene	13.71	128	481198	6.684	ug/L #	1

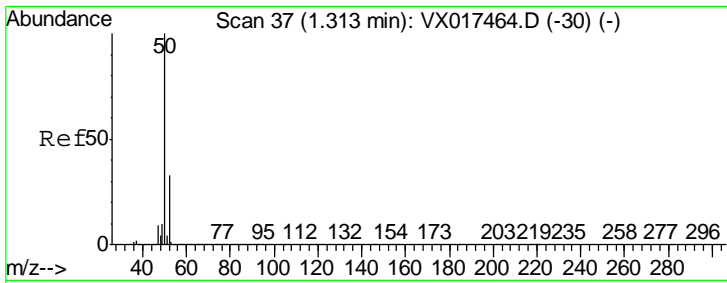
(#) = qualifier out of range (m) = manual integration (+) = signals summed

Data Path : Z:\VOASRV\HPCHEM1\MSVOA X\DATA\VX072220\
 Data File : VX017470.D
 Acq On : 22 Jul 2020 17:06
 Operator : JC/SP
 Sample : L3395-11
 Misc : 25.0mL/MSVOA X/WATER
 ALS Vial : 9 Sample Multiplier: 1

Instrument :
 MSVOA_X
 Client Sampled :
 GAY19

Quant Time: Jul 23 03:02:12 2020
 Quant Method : Z:\VOASRV\HPCHEM1\MSVOA_X\METHOD\SOMXTR072120WMA.M
 Quant Title : TRACE VOA SOM01.0
 QLast Update : Thu Jul 23 02:59:48 2020
 Response via : Initial Calibration

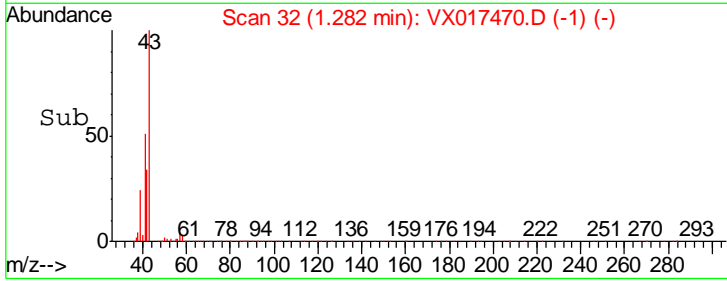
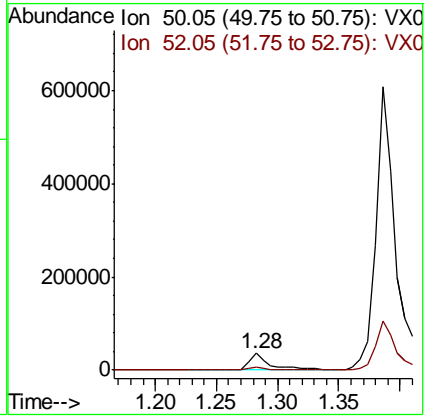
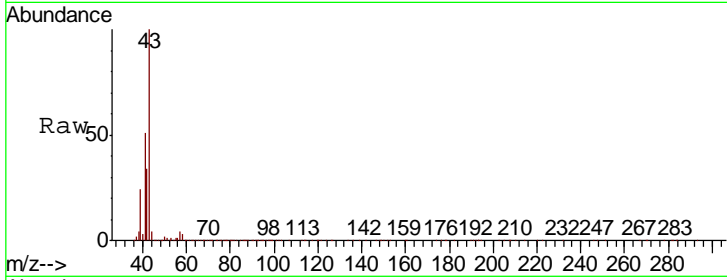




#3
 Chloromethane
 Concen: 0.894 ug/L
 RT: 1.28 min Scan# 32
 Delta R.T. -0.03 min
 Lab File: VX017470.D
 Acq: 22 Jul 2020 17:06

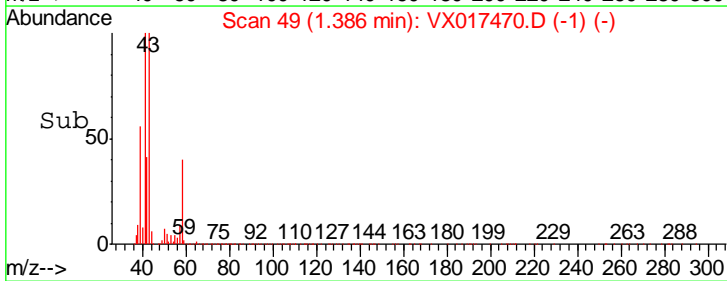
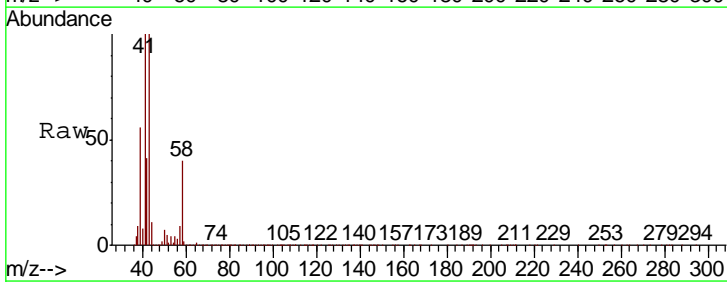
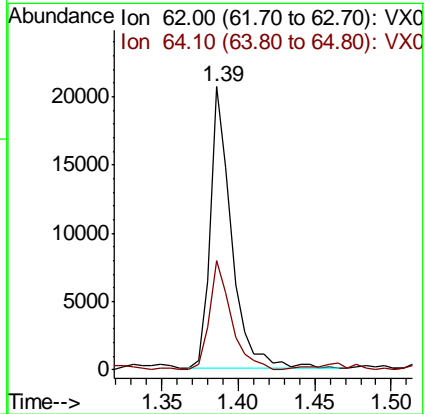
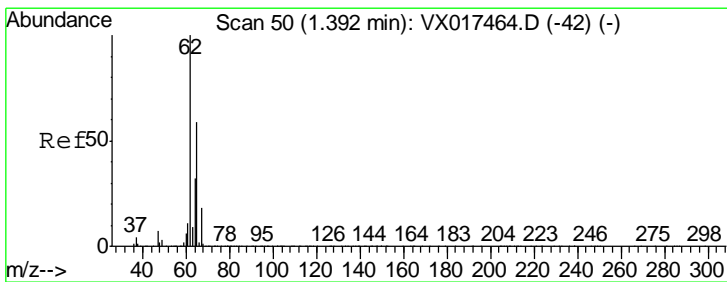
Instrument :
 MSVOA_X
ClientSampled :
 GAY19

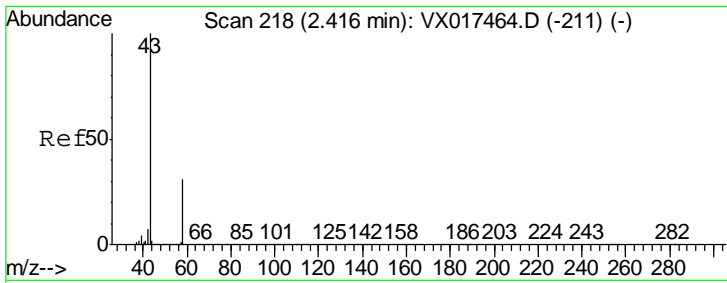
Tgt Ion	Resp	Lower	Upper
50	42161		
52	15.3	23.2	43.2#



#5
 Vinyl chloride
 Concen: 0.444 ug/L
 RT: 1.39 min Scan# 49
 Delta R.T. -0.01 min
 Lab File: VX017470.D
 Acq: 22 Jul 2020 17:06

Tgt Ion	Resp	Lower	Upper
62	19974		
64	38.7	23.2	43.2

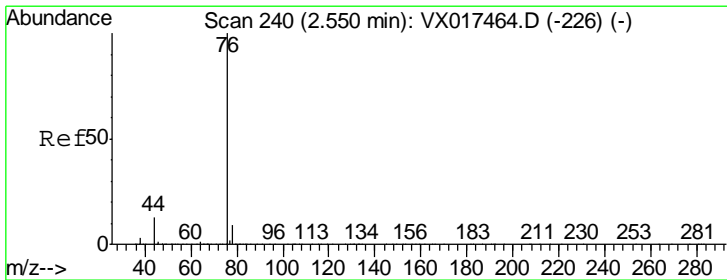
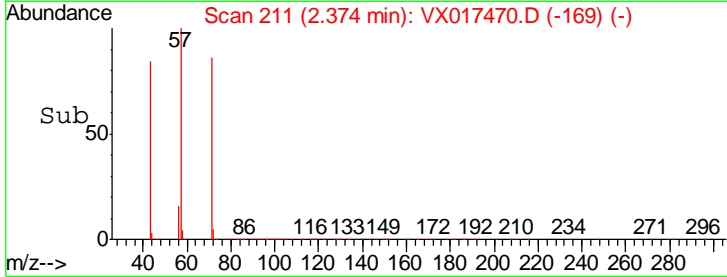
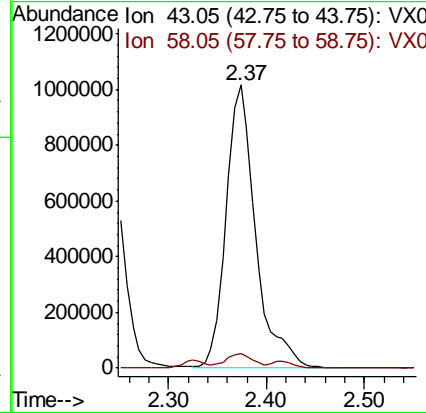
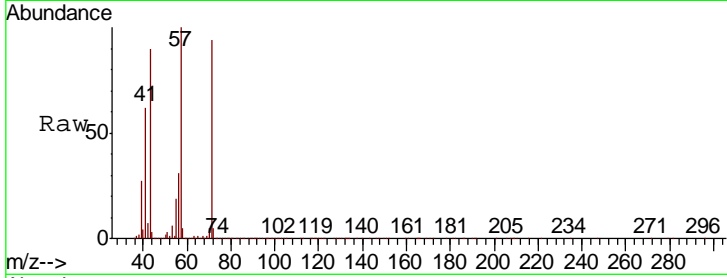




#13
 Acetone
 Concen: 393.243 ug/L
 RT: 2.37 min Scan# 211
 Delta R.T. -0.04 min
 Lab File: VX017470.D
 Acq: 22 Jul 2020 17:06

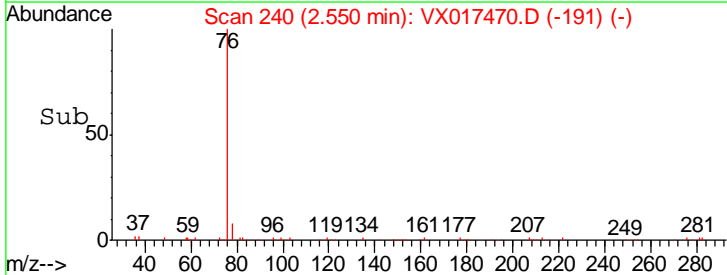
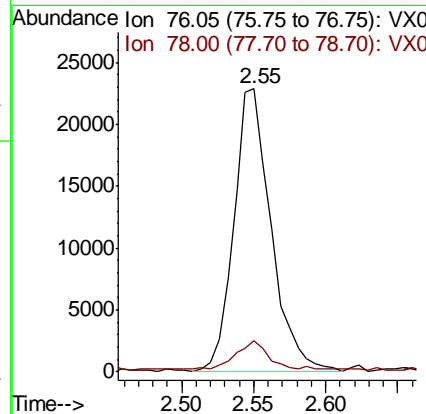
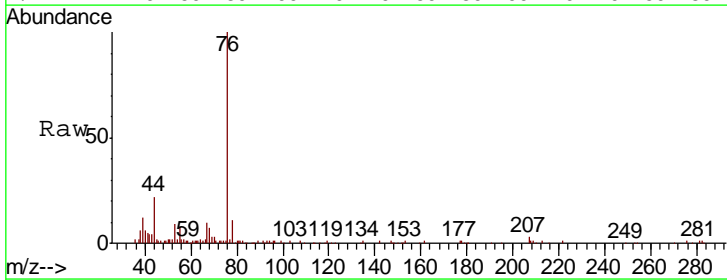
Instrument :
 MSVOA_X
 ClientSampled :
 GAY19

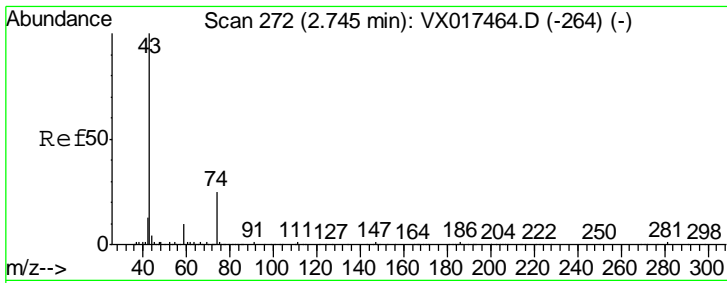
Tgt Ion: 43 Resp: 2126790
 Ion Ratio Lower Upper
 43 100
 58 4.8 0.0 58.6



#14
 Carbon disulfide
 Concen: 0.374 ug/L
 RT: 2.55 min Scan# 240
 Delta R.T. 0.00 min
 Lab File: VX017470.D
 Acq: 22 Jul 2020 17:06

Tgt Ion: 76 Resp: 41367
 Ion Ratio Lower Upper
 76 100
 78 11.1 7.3 10.9#

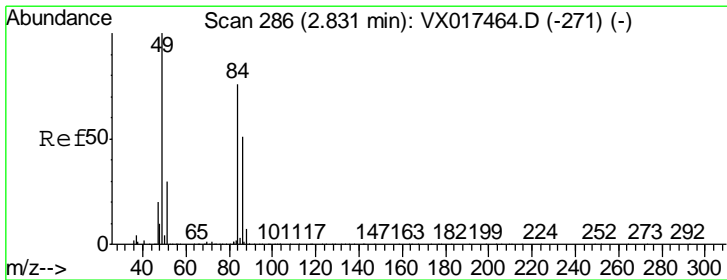
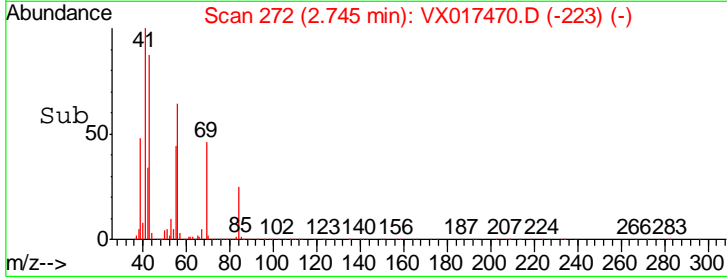
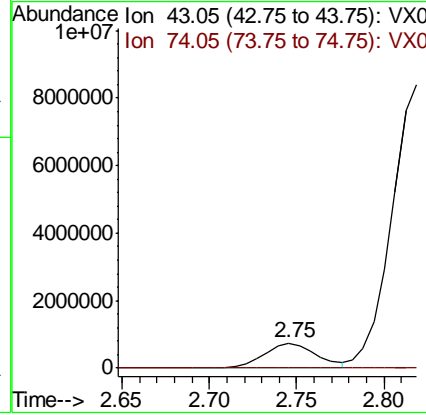
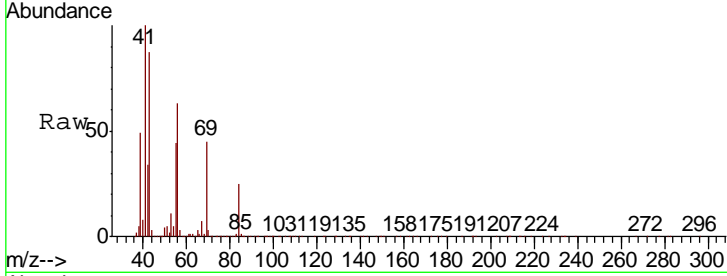




#15
Methyl Acetate
Concen: 97.246 ug/L
RT: 2.75 min Scan# 272
Delta R.T. 0.00 min
Lab File: VX017470.D
Acq: 22 Jul 2020 17:06

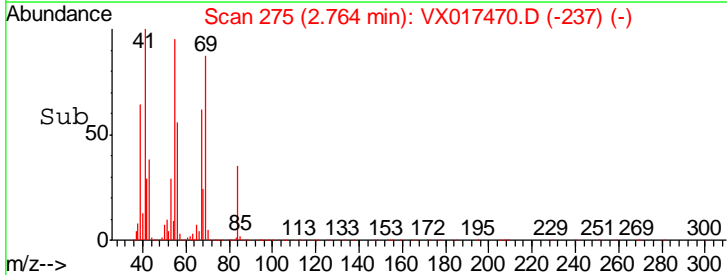
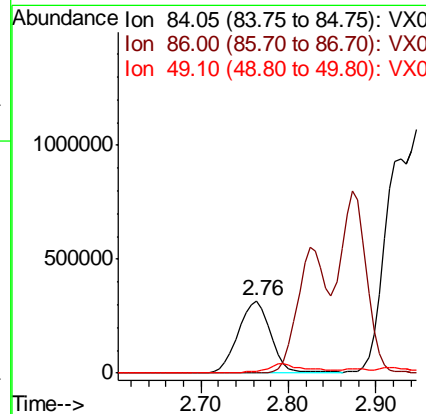
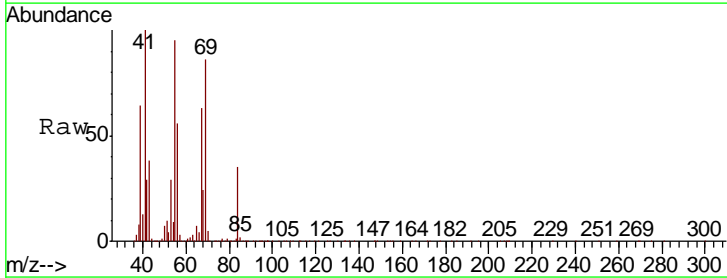
Instrument :
MSVOA_X
ClientSampled :
GAY19

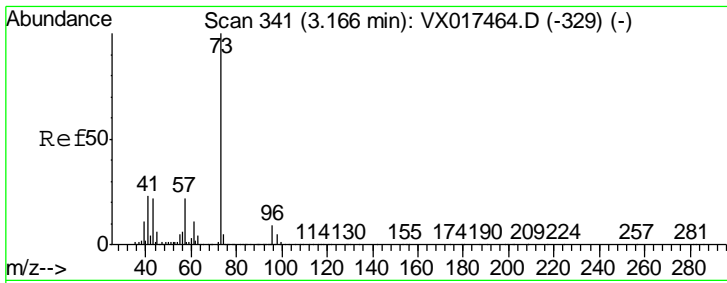
Tgt Ion: 43 Resp: 1530999
Ion Ratio Lower Upper
43 100
74 0.5 17.6 26.4#



#16
Methylene chloride
Concen: 18.342 ug/L
RT: 2.76 min Scan# 275
Delta R.T. -0.07 min
Lab File: VX017470.D
Acq: 22 Jul 2020 17:06

Tgt Ion: 84 Resp: 822603
Ion Ratio Lower Upper
84 100
86 0.5 44.8 83.2#
49 2.9 81.0 150.4#

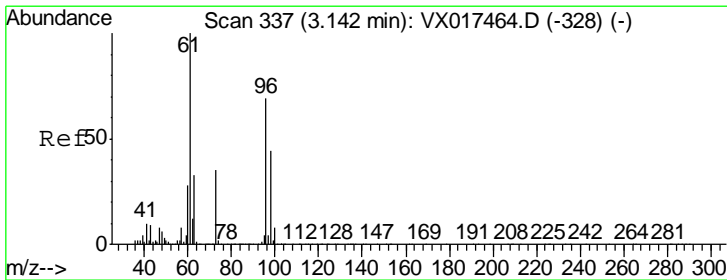
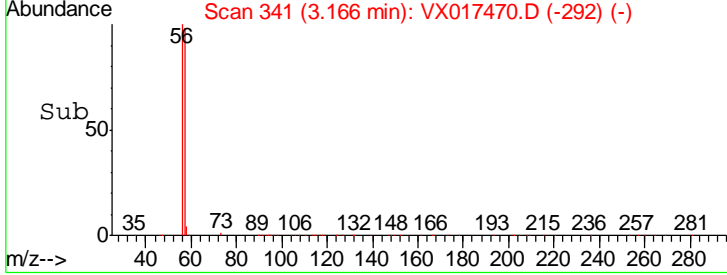
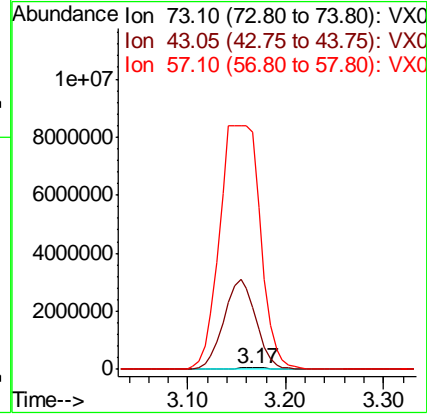
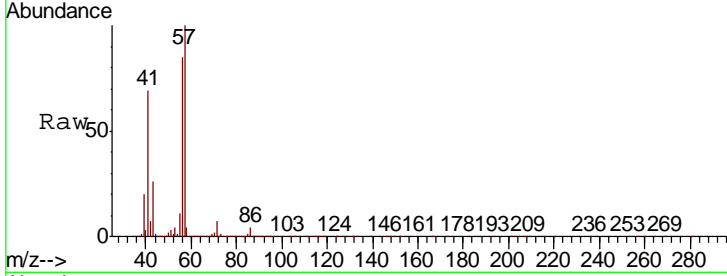




#17
Methyl tert-butyl Ether
Concen: 1.628 ug/L
RT: 3.17 min Scan# 341
Delta R.T. 0.00 min
Lab File: VX017470.D
Acq: 22 Jul 2020 17:06

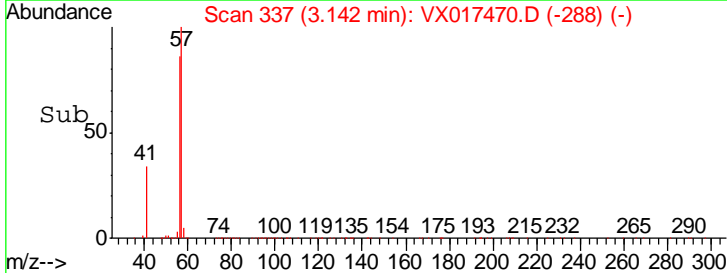
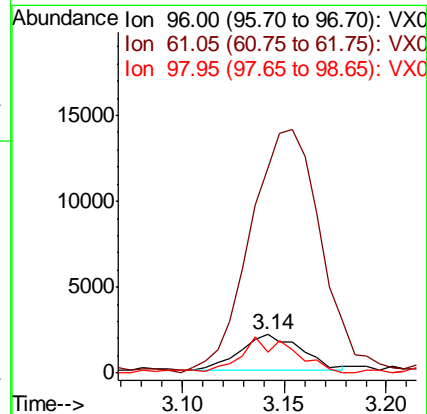
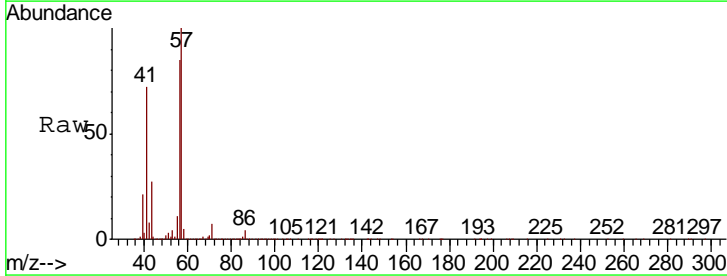
Instrument :
MSVOA_X
ClientSampled :
GAY19

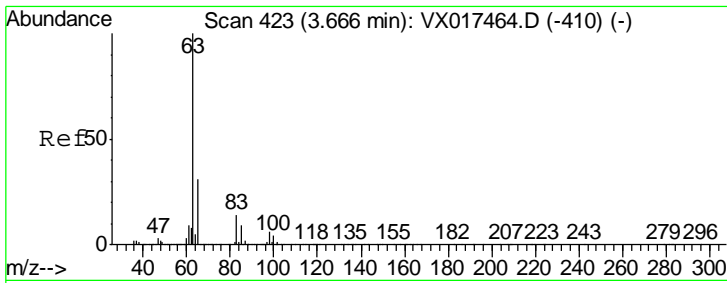
Tgt Ion	Resp	Lower	Upper
73	126586		
43	5574.4	17.8	26.6#
57	19113.2	17.8	26.8#



#18
trans-1,2-Dichloroethene
Concen: 0.128 ug/L
RT: 3.14 min Scan# 337
Delta R.T. 0.00 min
Lab File: VX017470.D
Acq: 22 Jul 2020 17:06

Tgt Ion	Resp	Lower	Upper
96	4452		
61	535.7	99.8	185.4#
98	55.2	46.4	86.2

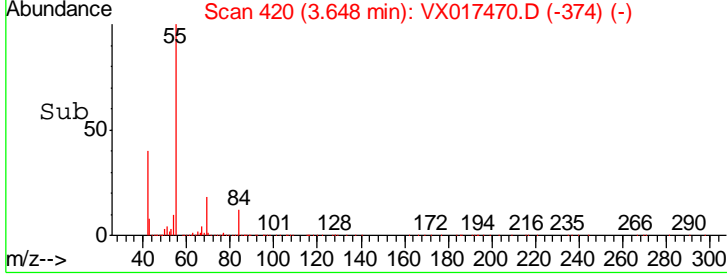
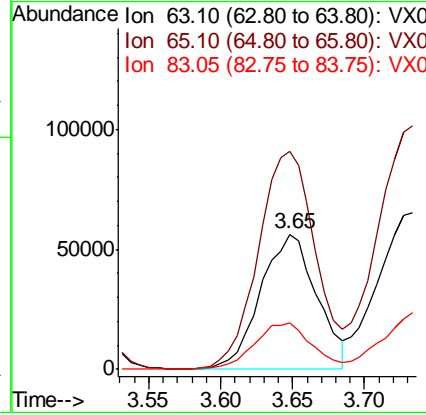
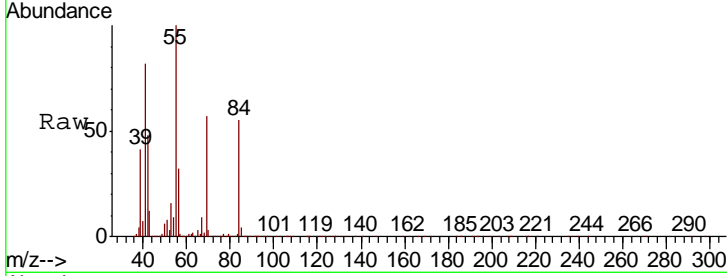




#19
 1,1-Dichloroethane
 Concen: 2.482 ug/L
 RT: 3.65 min Scan# 420
 Delta R.T. -0.02 min
 Lab File: VX017470.D
 Acq: 22 Jul 2020 17:06

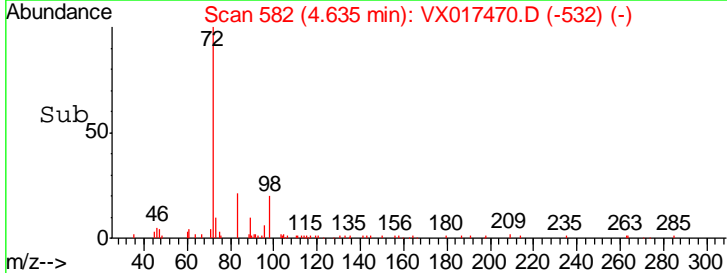
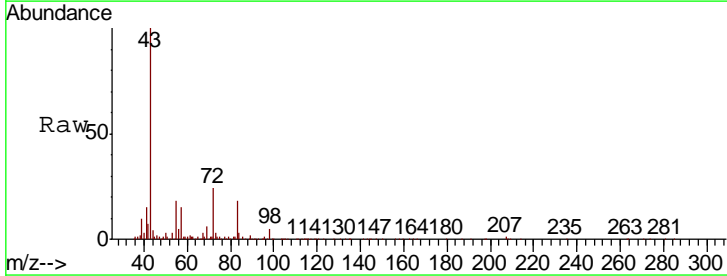
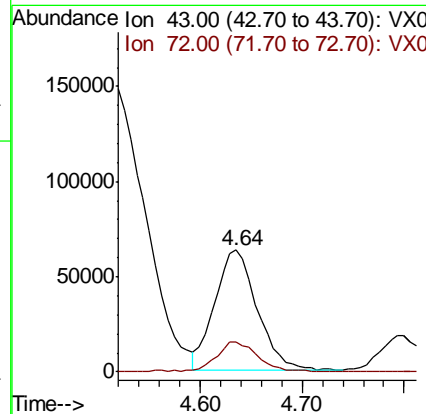
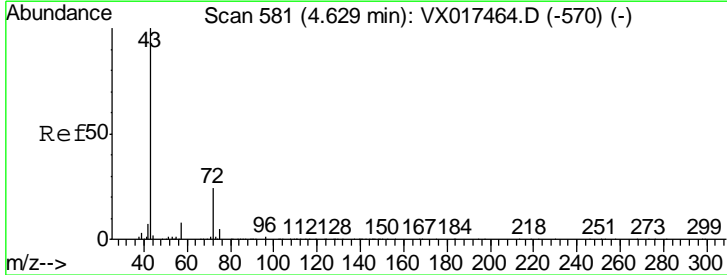
Instrument :
 MSVOA_X
ClientSampled :
 GAY19

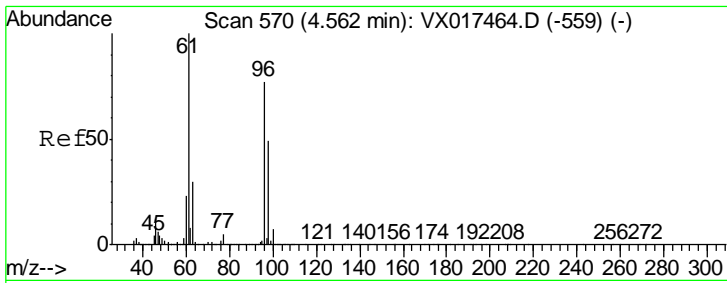
Tgt Ion	Resp	Lower	Upper
63	151878		
65	161.1	23.2	43.2#
83	33.9	9.4	17.4#



#21
 2-Butanone
 Concen: 21.219 ug/L
 RT: 4.64 min Scan# 582
 Delta R.T. 0.01 min
 Lab File: VX017470.D
 Acq: 22 Jul 2020 17:06

Tgt Ion	Resp	Lower	Upper
43	182808		
72	22.8	12.1	36.3

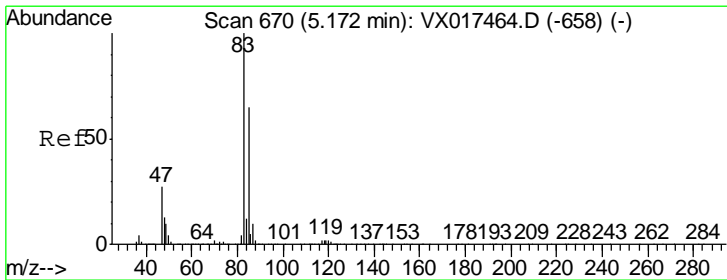
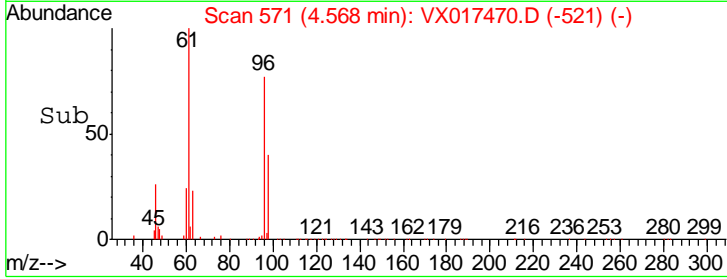
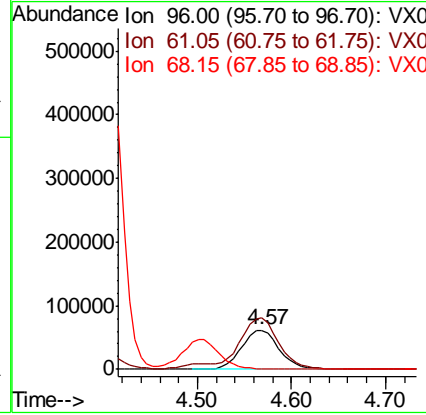
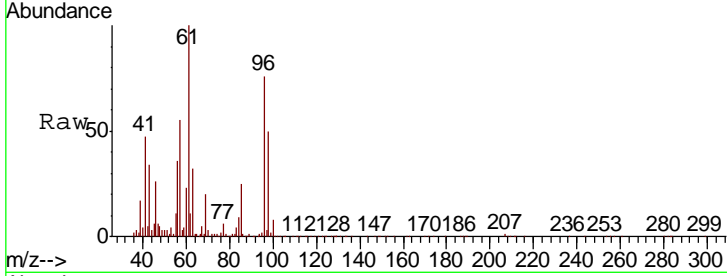




#22
 cis-1,2-Dichloroethene
 Concen: 4.996 ug/L
 RT: 4.57 min Scan# 571
 Delta R.T. 0.01 min
 Lab File: VX017470.D
 Acq: 22 Jul 2020 17:06

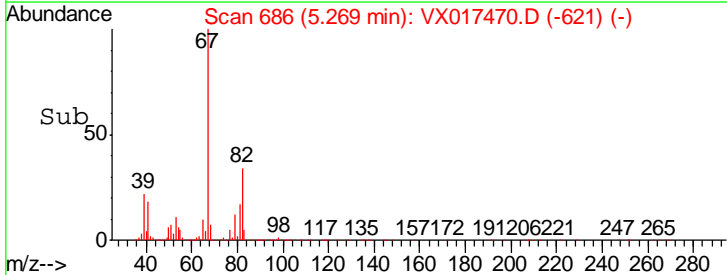
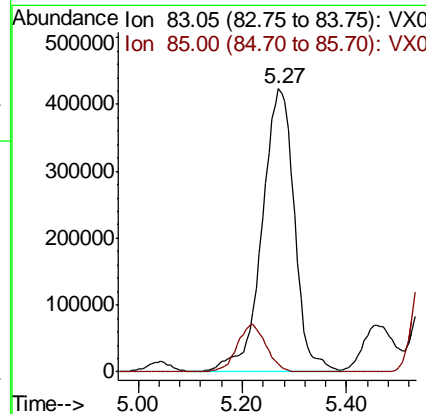
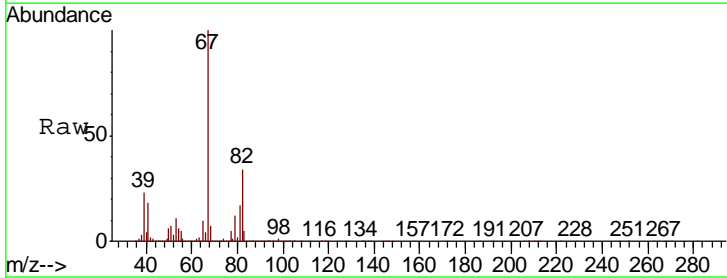
Instrument :
 MSVOA_X
ClientSampled :
 GAY19

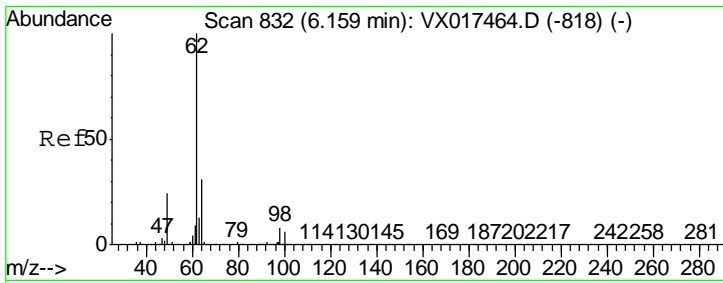
Tgt Ion	Resp	Lower	Upper
96	171559		
61	131.5	91.6	170.2
68	1.8	0.0	0.0#



#25
 Chloroform
 Concen: 28.163 ug/L
 RT: 5.27 min Scan# 686
 Delta R.T. 0.10 min
 Lab File: VX017470.D
 Acq: 22 Jul 2020 17:06

Tgt Ion	Resp	Lower	Upper
83	1809741		
85	2.8	46.2	85.8#

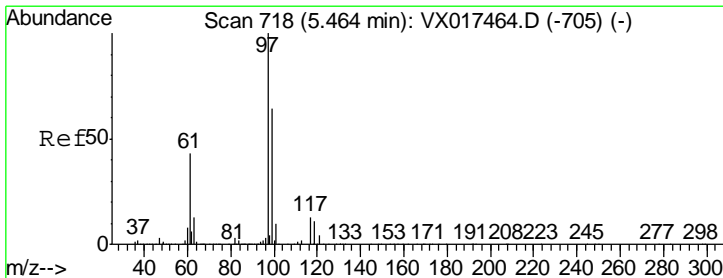
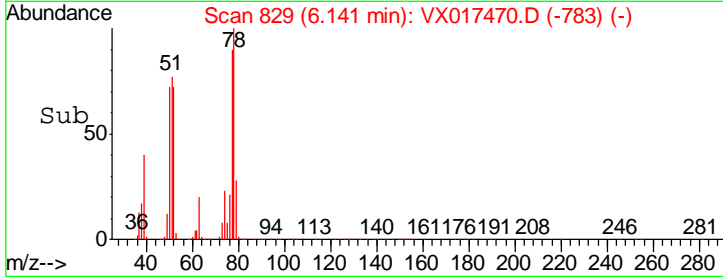
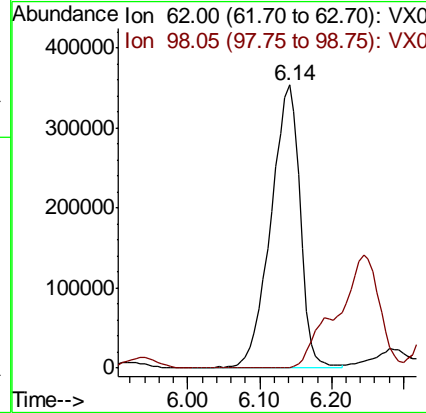
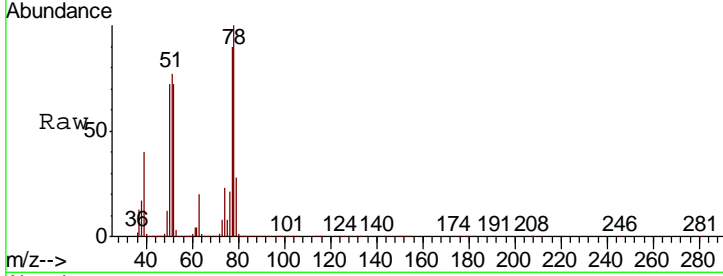




#27
 1,2-Dichloroethane
 Concen: 24.100 ug/L
 RT: 6.14 min Scan# 829
 Delta R.T. -0.02 min
 Lab File: VX017470.D
 Acq: 22 Jul 2020 17:06

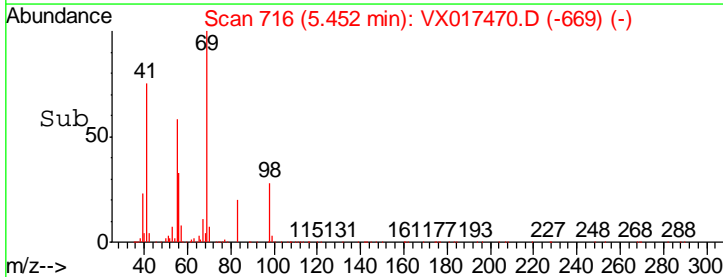
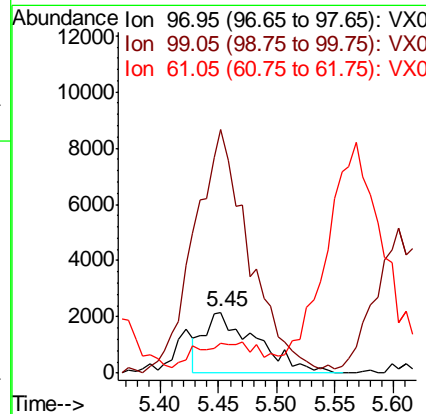
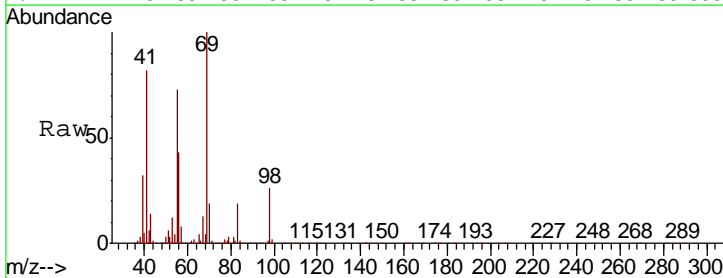
Instrument :
 MSVOA_X
 ClientSampled :
 GAY19

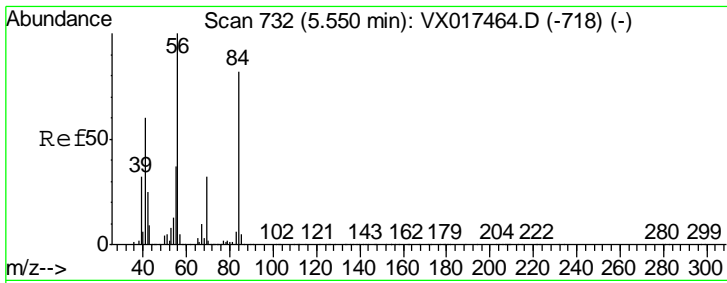
Tgt Ion	Resp	Lower	Upper
62	100		
98	0.2	7.7	11.5#



#29
 1,1,1-Trichloroethane
 Concen: 0.119 ug/L
 RT: 5.45 min Scan# 716
 Delta R.T. -0.01 min
 Lab File: VX017470.D
 Acq: 22 Jul 2020 17:06

Tgt Ion	Resp	Lower	Upper
97	100		
99	429.4	53.0	79.4#
61	0.0	35.2	52.8#



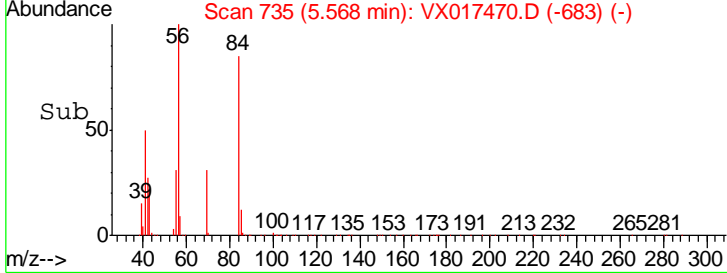
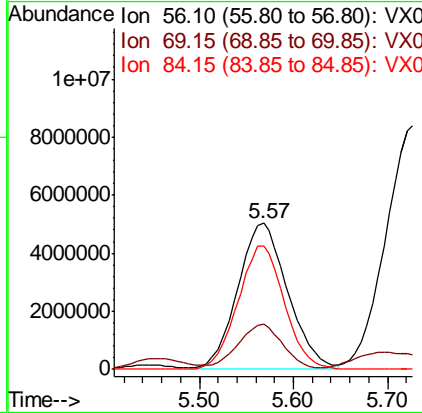
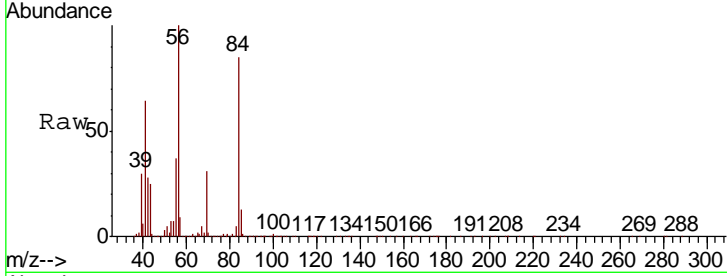


#30
 Cyclohexane
 Concen: 410.887 ug/L
 RT: 5.57 min Scan# 735
 Delta R.T. 0.02 min
 Lab File: VX017470.D
 Acq: 22 Jul 2020 17:06

Instrument :
 MSVOA_X
ClientSampled :
 GAY19

Tgt Ion: 56 Resp: 18658696

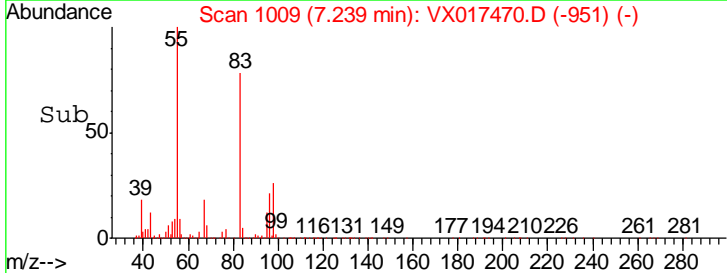
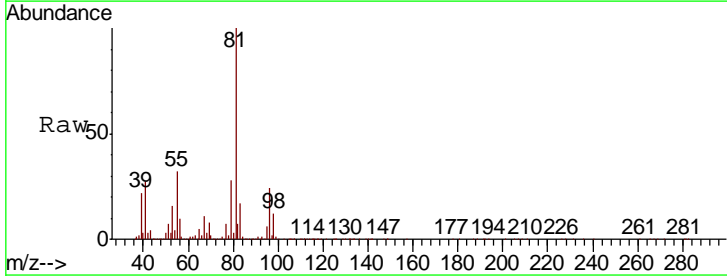
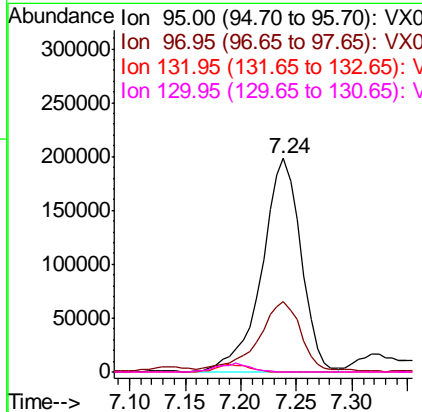
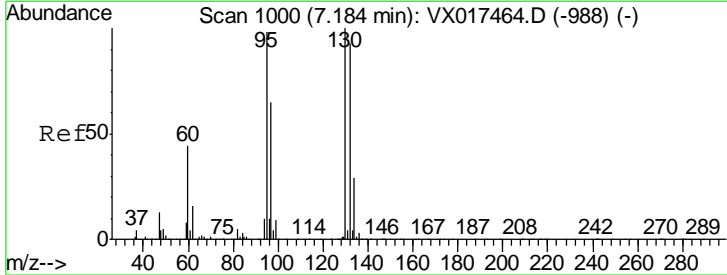
Ion	Ratio	Lower	Upper
56	100		
69	27.7	25.4	38.2
84	78.9	69.3	103.9

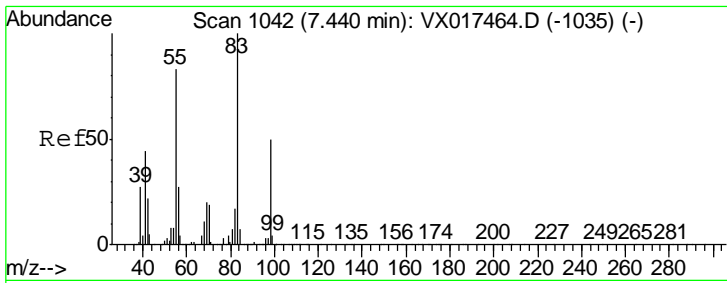


#34
 Trichloroethene
 Concen: 14.471 ug/L
 RT: 7.24 min Scan# 1009
 Delta R.T. 0.05 min
 Lab File: VX017470.D
 Acq: 22 Jul 2020 17:06

Tgt Ion: 95 Resp: 480955

Ion	Ratio	Lower	Upper
95	100		
97	33.2	45.9	85.3#
132	0.0	65.5	121.7#
130	0.0	66.5	123.5#

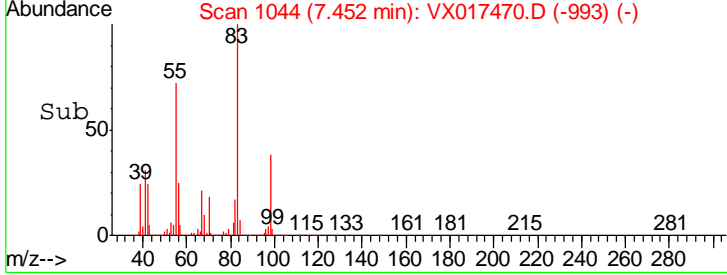
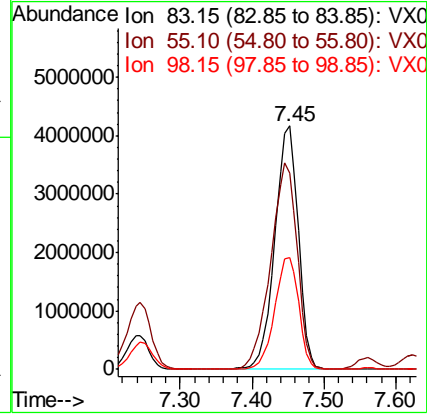
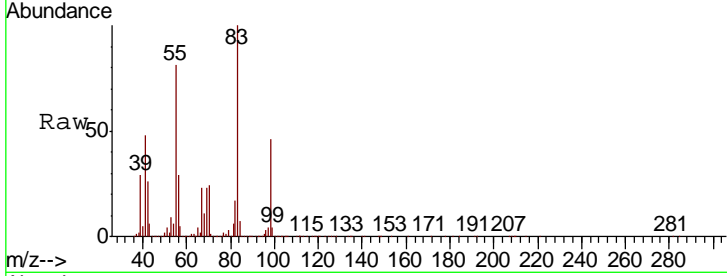




#35
 Methylcyclohexane
 Concen: 208.739 ug/L
 RT: 7.45 min Scan# 1044
 Delta R.T. 0.01 min
 Lab File: VX017470.D
 Acq: 22 Jul 2020 17:06

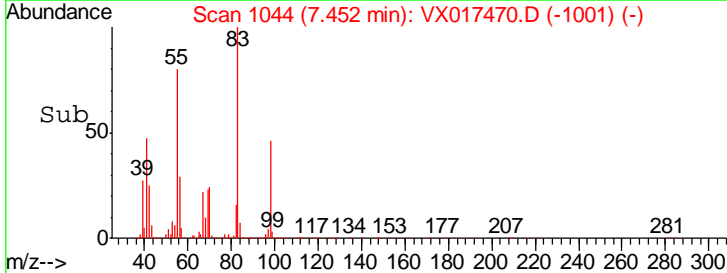
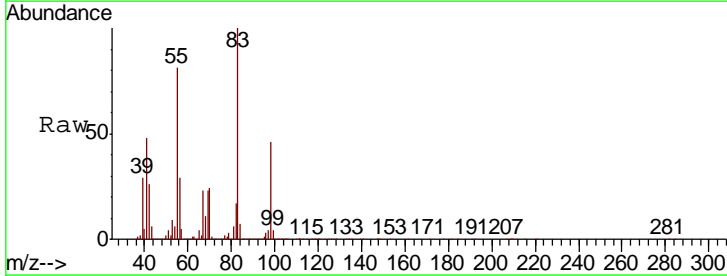
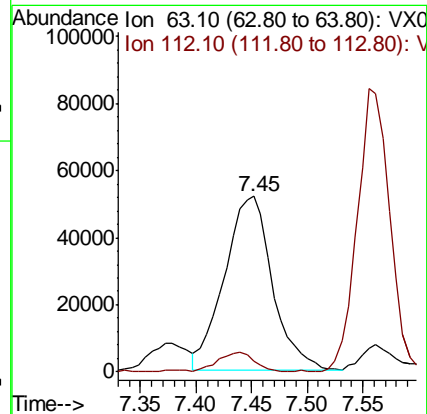
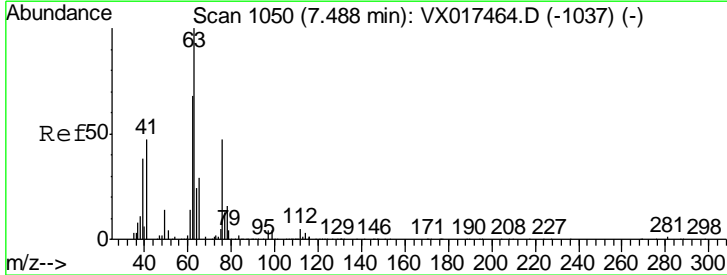
Instrument : MSVOA_X
 ClientSampled : GAY19

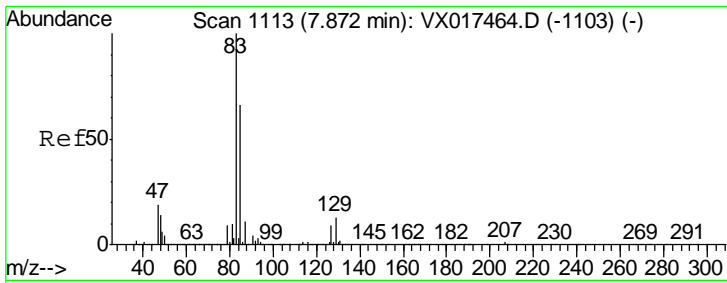
Tgt Ion	Resp	Lower	Upper
83	100		
55	95.8	65.4	98.2
98	47.0	39.8	59.8



#37
 1,2-Dichloropropane
 Concen: 4.964 ug/L
 RT: 7.45 min Scan# 1044
 Delta R.T. -0.04 min
 Lab File: VX017470.D
 Acq: 22 Jul 2020 17:06

Tgt Ion	Resp	Lower	Upper
63	100		
112	8.0	3.8	5.8#

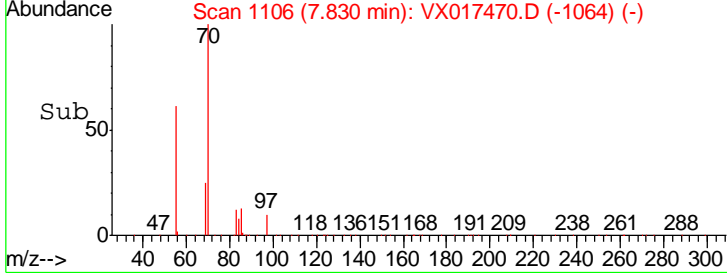
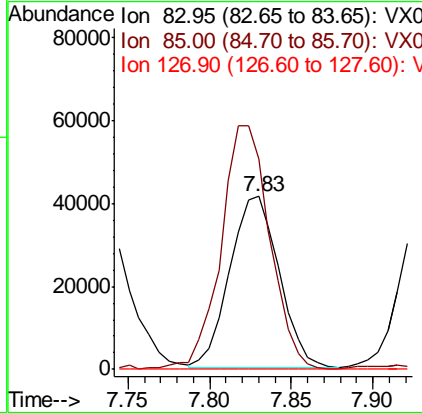
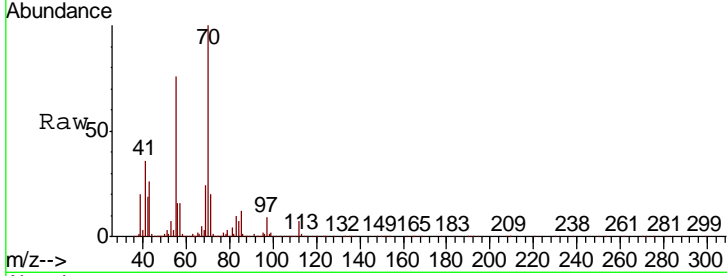




#38
 Bromodichloromethane
 Concen: 2.087 ug/L
 RT: 7.83 min Scan# 1106
 Delta R.T. -0.04 min
 Lab File: VX017470.D
 Acq: 22 Jul 2020 17:06

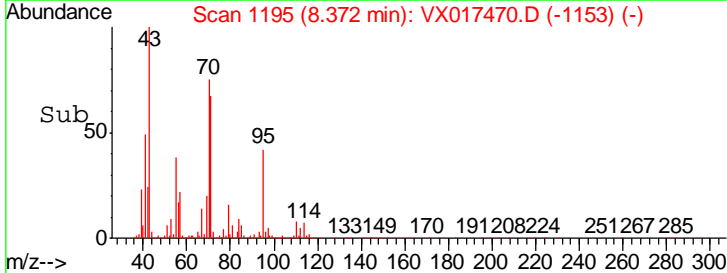
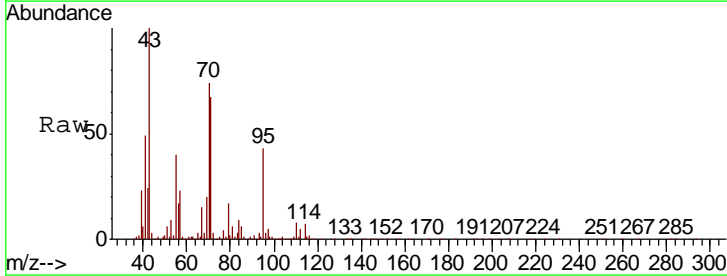
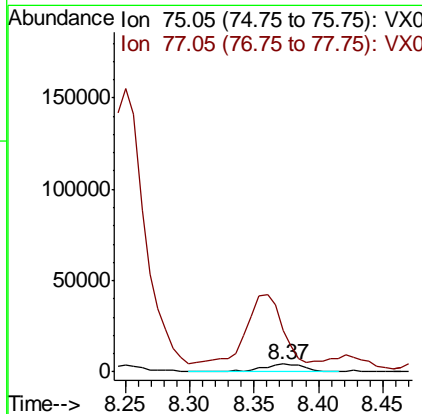
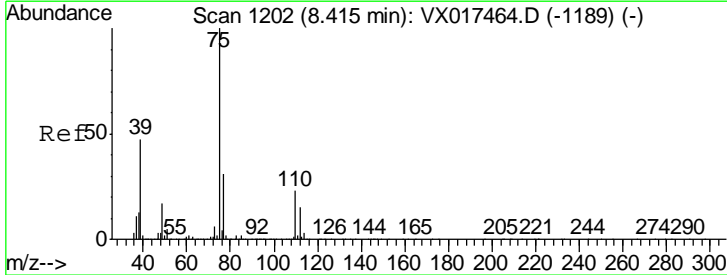
Instrument : MSVOA_X
 ClientSampled : GAY19

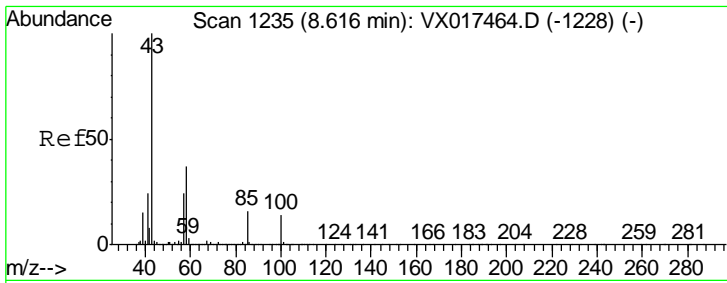
Tgt Ion	Resp	Lower	Upper
83	100		
85	122.0	44.7	83.1#
127	0.0	6.3	9.5#



#39
 cis-1,3-Dichloropropene
 Concen: 0.203 ug/L
 RT: 8.37 min Scan# 1195
 Delta R.T. -0.04 min
 Lab File: VX017470.D
 Acq: 22 Jul 2020 17:06

Tgt Ion	Resp	Lower	Upper
75	100		
77	536.6	23.1	42.9#

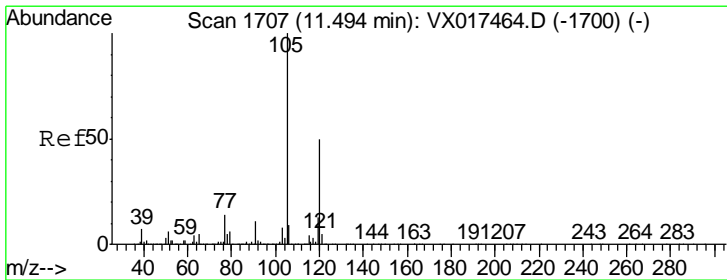
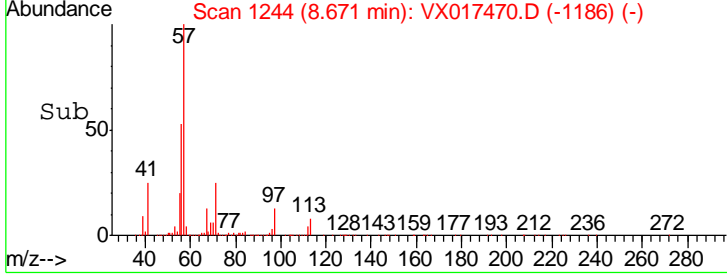
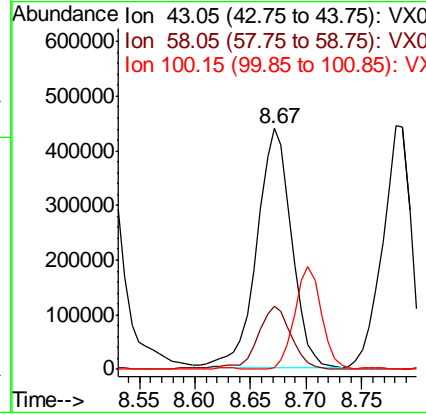
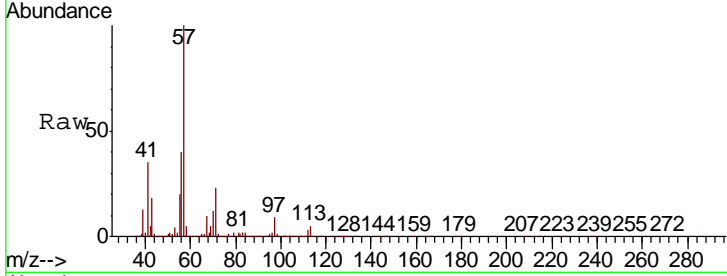




#40
 4-Methyl-2-pentanone
 Concen: 52.304 ug/L
 RT: 8.67 min Scan# 1244
 Delta R.T. 0.05 min
 Lab File: VX017470.D
 Acq: 22 Jul 2020 17:06

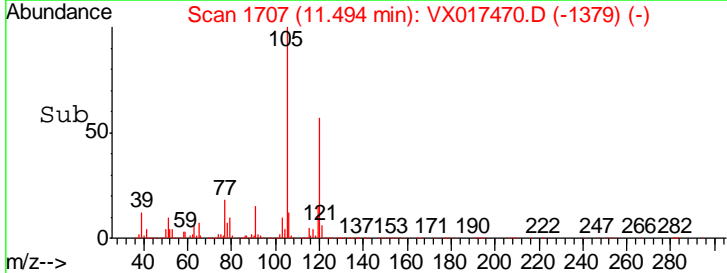
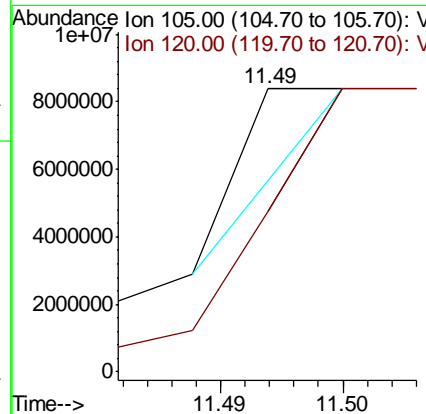
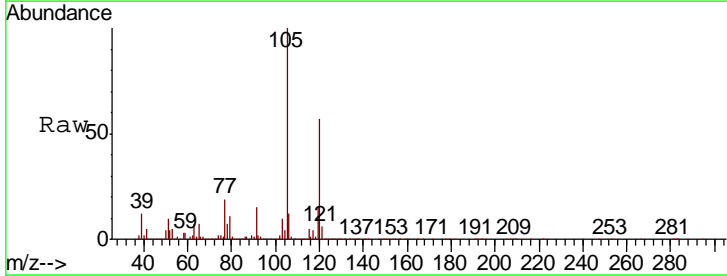
Instrument : MSVOA_X
 ClientSampled : GAY19

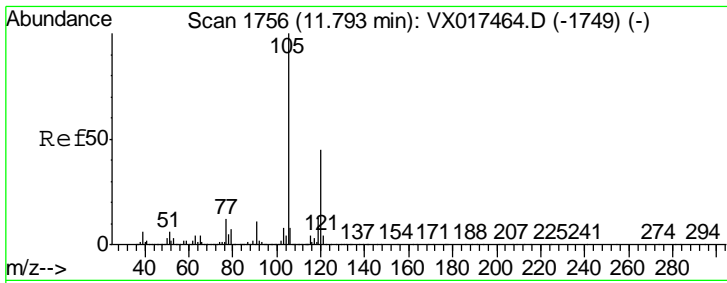
Tgt Ion	Resp	Lower	Upper
43	100		
58	26.5	30.1	45.1#
100	33.1	6.5	9.7#



#43
 1,3,5-Trimethylbenzene
 Concen: 20.035 ug/L
 RT: 11.49 min Scan# 1707
 Delta R.T. 0.00 min
 Lab File: VX017470.D
 Acq: 22 Jul 2020 17:06

Tgt Ion	Resp	Lower	Upper
105	100		
120	701.6	38.2	57.2#

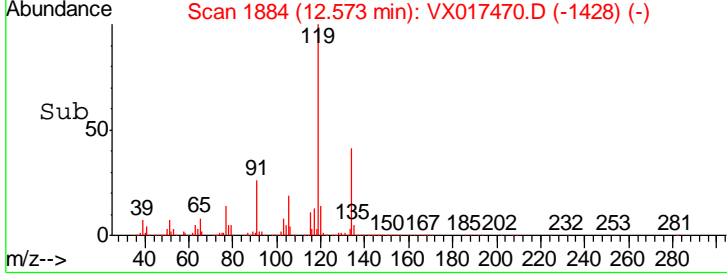
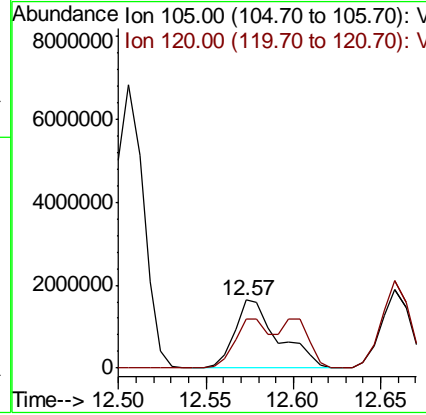
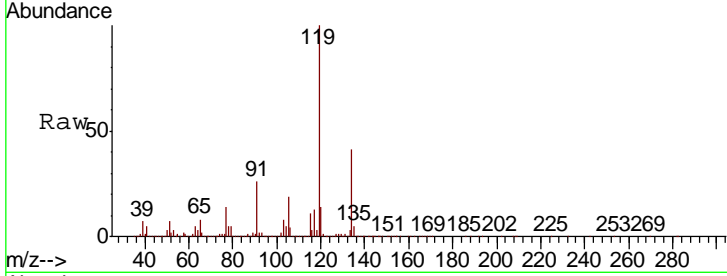




#44
 1,2,4-Trimethylbenzene
 Concen: 24.663 ug/L
 RT: 12.57 min Scan# 1884
 Delta R.T. 0.78 min
 Lab File: VX017470.D
 Acq: 22 Jul 2020 17:06

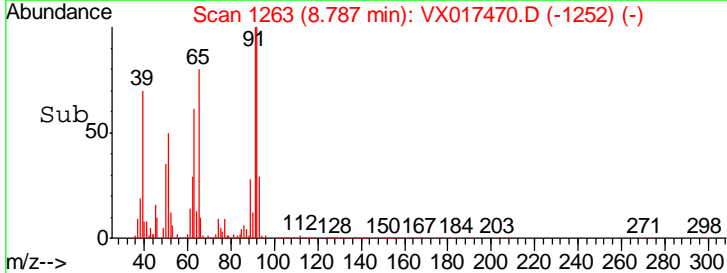
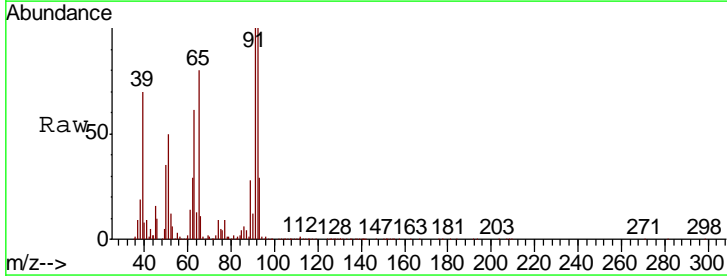
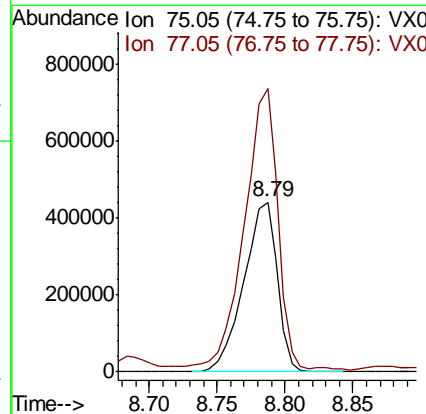
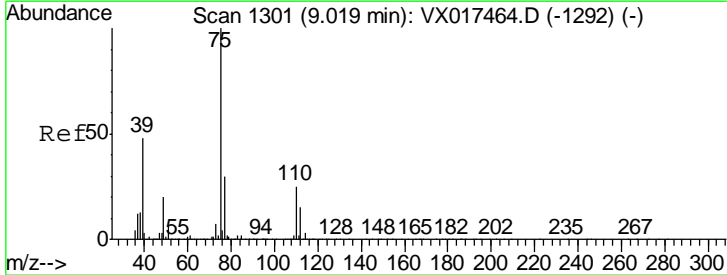
Instrument :
 MSVOA_X
 ClientSampled :
 GAY19

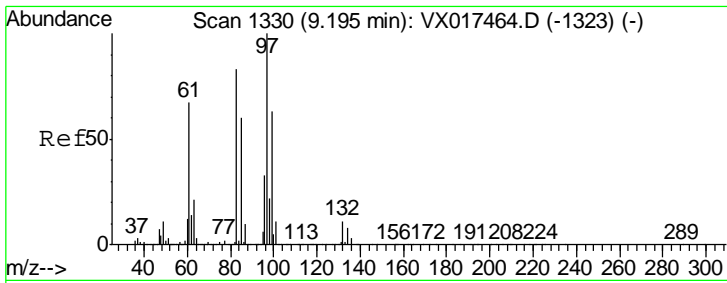
Tgt Ion: 105 Resp: 2810209
 Ion Ratio Lower Upper
 105 100
 120 53.5 36.5 54.7



#46
 trans-1,3-Dichloropropene
 Concen: 19.661 ug/L
 RT: 8.79 min Scan# 1263
 Delta R.T. -0.23 min
 Lab File: VX017470.D
 Acq: 22 Jul 2020 17:06

Tgt Ion: 75 Resp: 757543
 Ion Ratio Lower Upper
 75 100
 77 166.5 21.4 39.8#

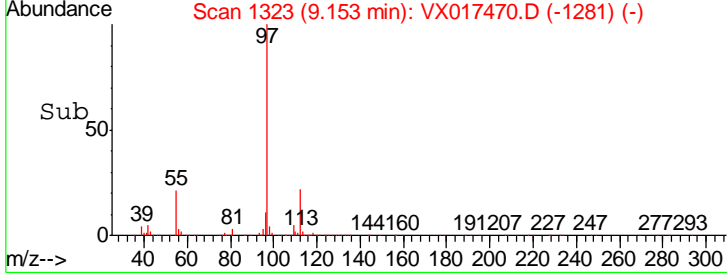
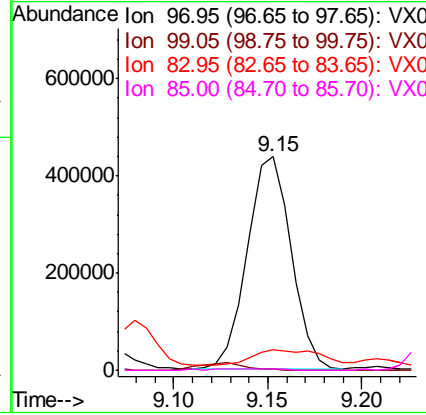
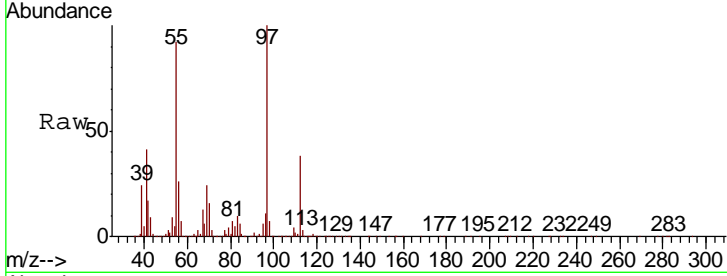




#47
 1,1,2-Trichloroethane
 Concen: 33.175 ug/L
 RT: 9.15 min Scan# 1323
 Delta R.T. -0.04 min
 Lab File: VX017470.D
 Acq: 22 Jul 2020 17:06

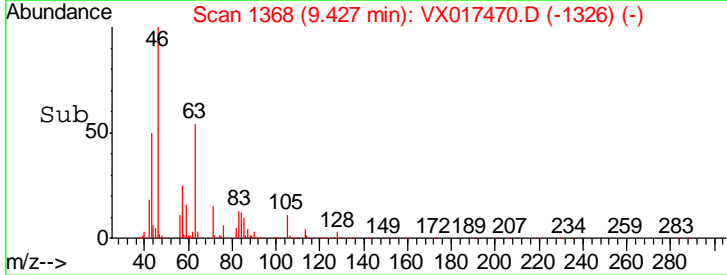
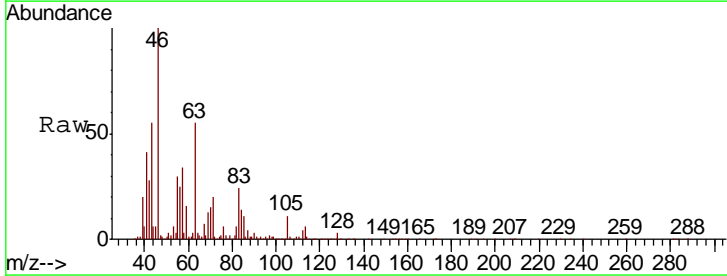
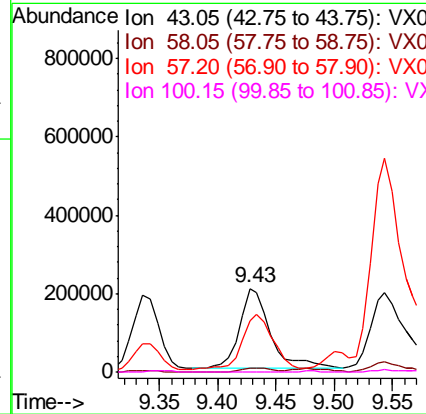
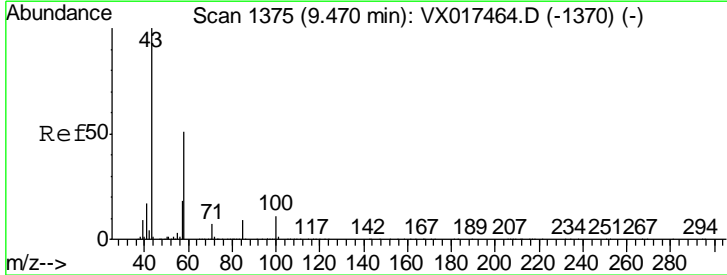
Instrument :
 MSVOA_X
ClientSampled :
 GAY19

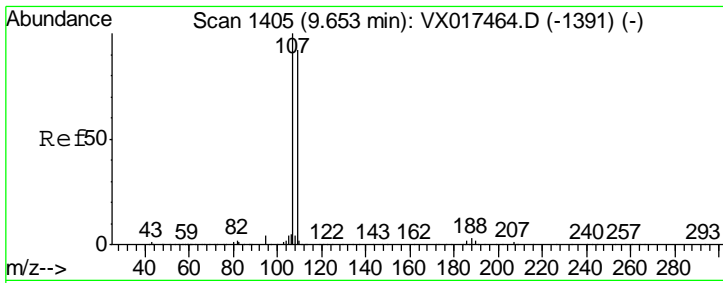
Tgt Ion	Resp	Lower	Upper
97	100		
99	0.5	40.2	74.6#
83	9.5	61.6	114.4#
85	0.5	37.5	69.6#



#50
 2-Hexanone
 Concen: 29.022 ug/L
 RT: 9.43 min Scan# 1368
 Delta R.T. -0.04 min
 Lab File: VX017470.D
 Acq: 22 Jul 2020 17:06

Tgt Ion	Resp	Lower	Upper
43	100		
58	5.0	41.4	62.0#
57	70.0	26.9	40.3#
100	0.0	16.0	24.0#

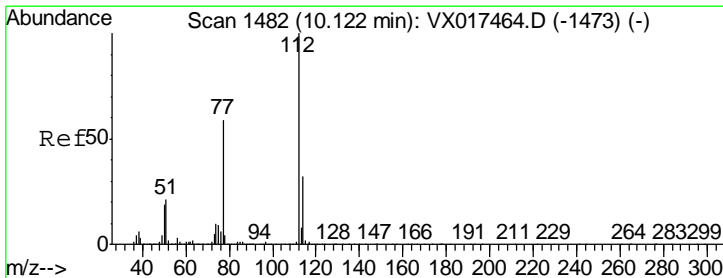
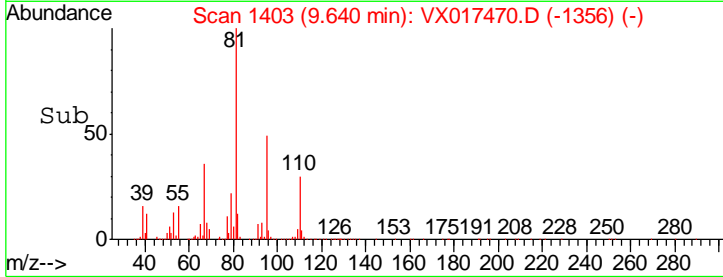
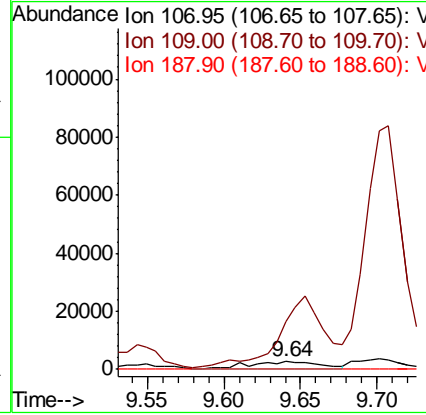
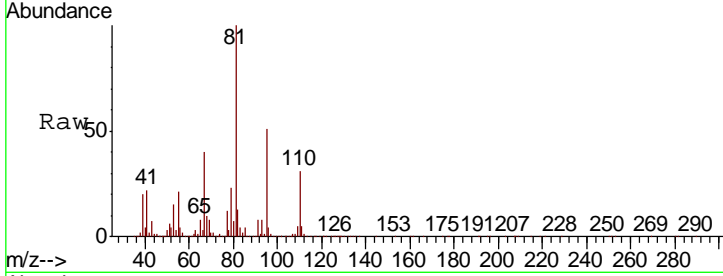




#52
 1,2-Dibromoethane
 Concen: 0.334 ug/L
 RT: 9.64 min Scan# 1403
 Delta R.T. -0.01 min
 Lab File: VX017470.D
 Acq: 22 Jul 2020 17:06

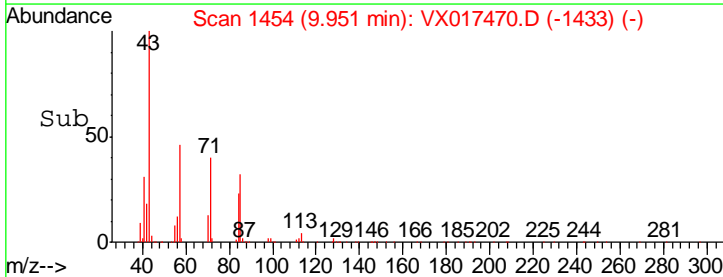
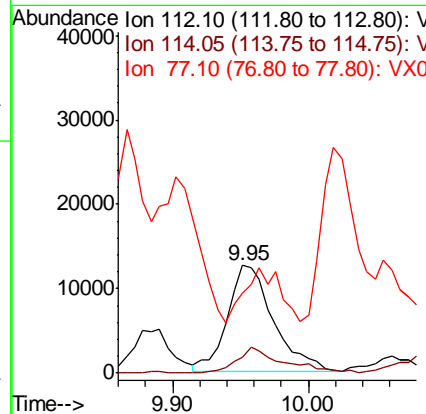
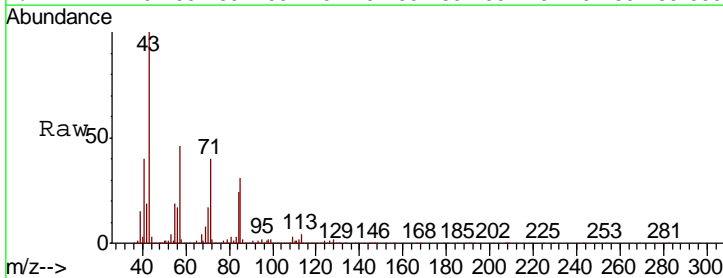
Instrument :
 MSVOA_X
 ClientSampled :
 GAY19

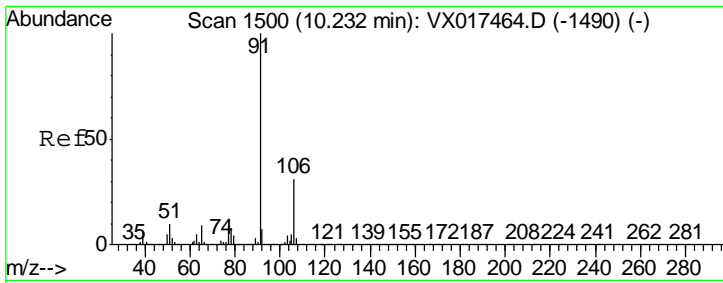
Tgt Ion	Resp	Lower	Upper
107	7016		
109	630.6	63.9	118.7#
188	0.0	3.0	4.4#



#53
 Chlorobenzene
 Concen: 0.352 ug/L
 RT: 9.95 min Scan# 1454
 Delta R.T. -0.17 min
 Lab File: VX017470.D
 Acq: 22 Jul 2020 17:06

Tgt Ion	Resp	Lower	Upper
112	29609		
114	14.5	23.1	42.9#
77	73.8	46.2	69.2#

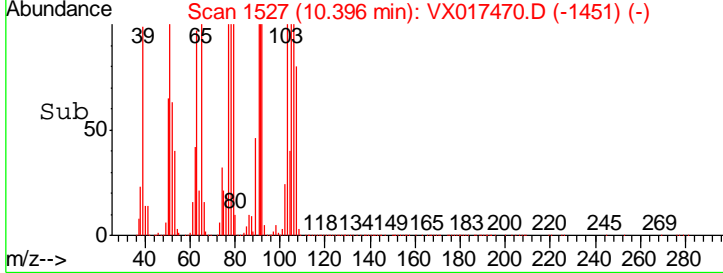
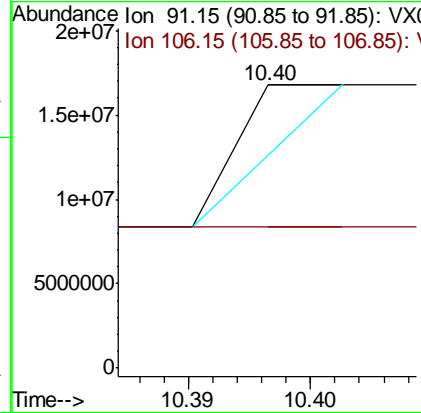
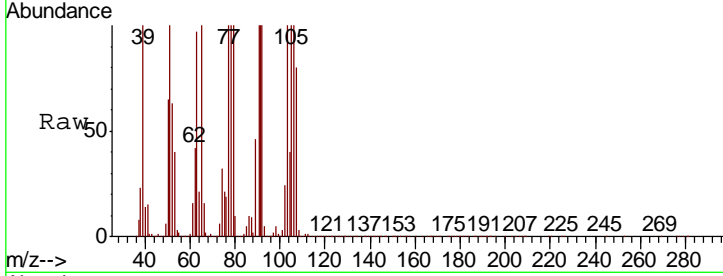




#54
 Ethylbenzene
 Concen: 22.919 ug/L
 RT: 10.40 min Scan# 1527
 Delta R.T. 0.16 min
 Lab File: VX017470.D
 Acq: 22 Jul 2020 17:06

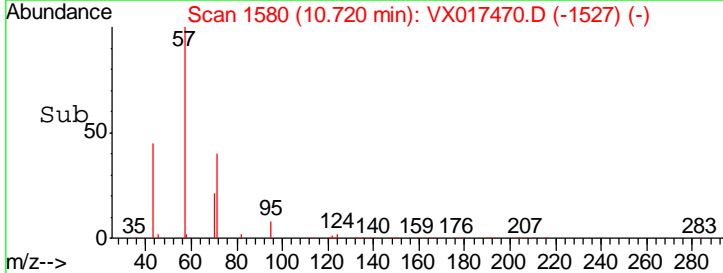
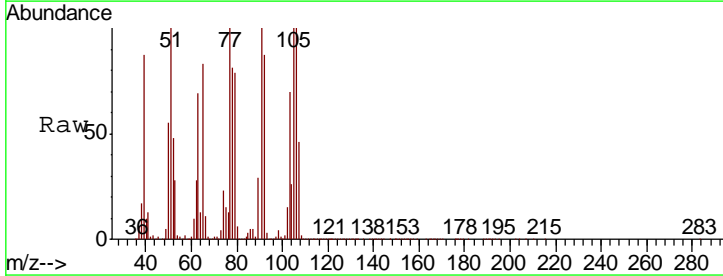
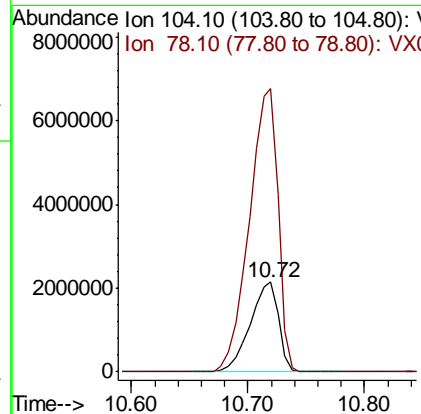
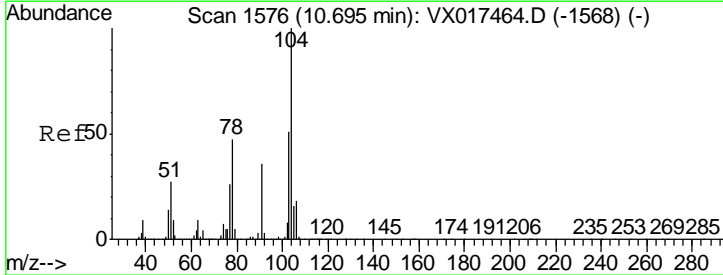
Instrument : MSVOA_X
 ClientSampled : GAY19

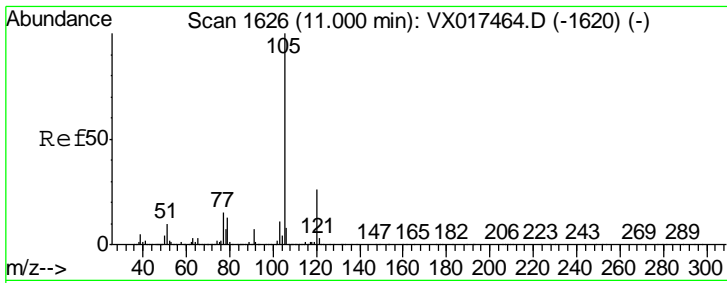
Tgt Ion	Resp	Lower	Upper
91	100		
106	50.0	22.5	41.7#



#57
 Styrene
 Concen: 41.979 ug/L
 RT: 10.72 min Scan# 1580
 Delta R.T. 0.02 min
 Lab File: VX017470.D
 Acq: 22 Jul 2020 17:06

Tgt Ion	Resp	Lower	Upper
104	100		
78	315.3	32.6	60.6#

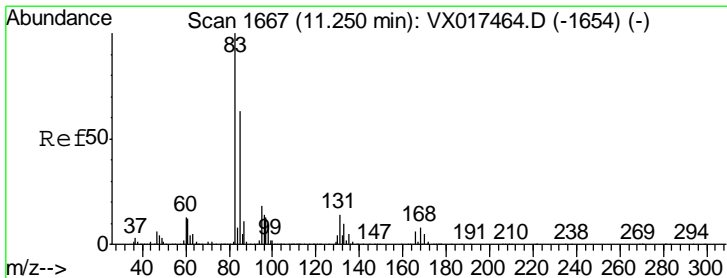
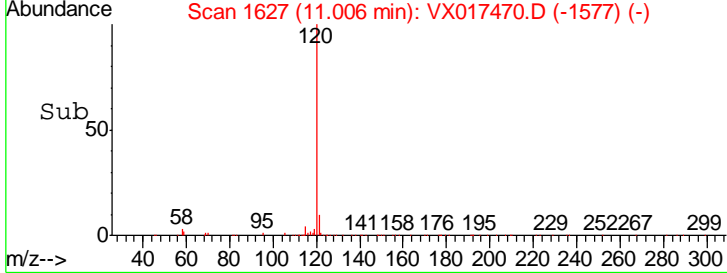
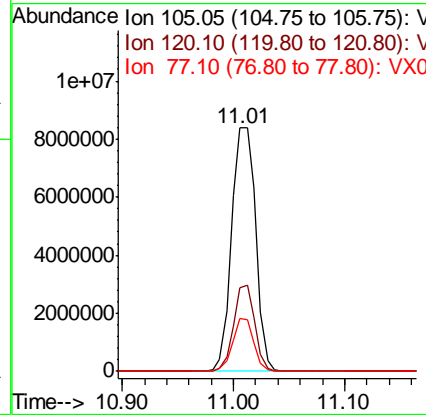
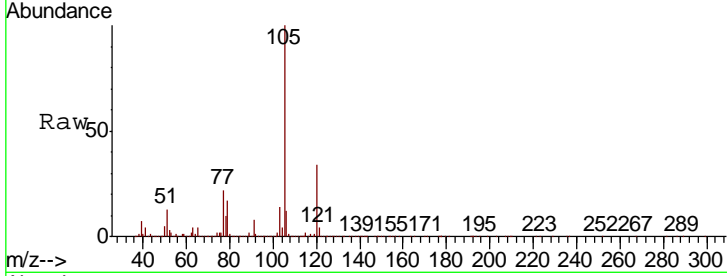




#58
 Isopropylbenzene
 Concen: 93.141 ug/L
 RT: 11.01 min Scan# 1627
 Delta R.T. 0.01 min
 Lab File: VX017470.D
 Acq: 22 Jul 2020 17:06

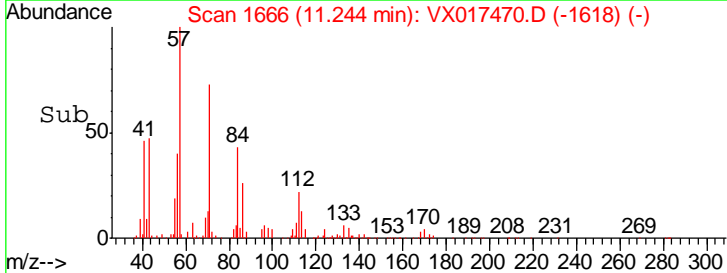
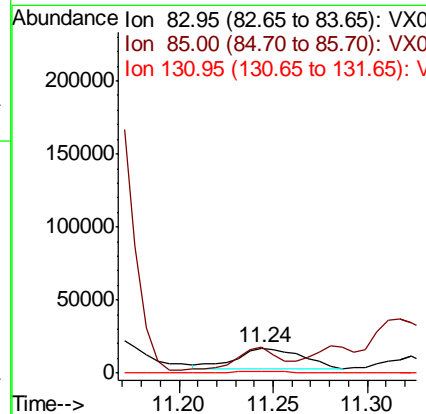
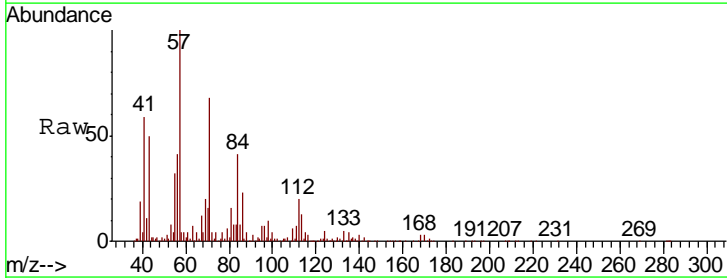
Instrument :
 MSVOA_X
 ClientSampled :
 GAY19

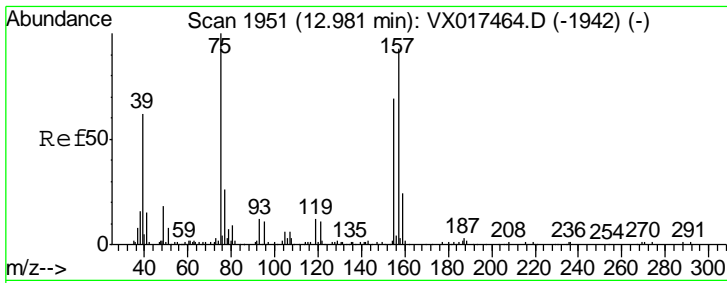
Tgt Ion	Resp	Lower	Upper
105	12488416		
105	100		
120	31.2	21.4	32.2
77	18.9	13.0	19.6



#60
 1,1,2,2-Tetrachloroethane
 Concen: 1.331 ug/L
 RT: 11.24 min Scan# 1666
 Delta R.T. -0.01 min
 Lab File: VX017470.D
 Acq: 22 Jul 2020 17:06

Tgt Ion	Resp	Lower	Upper
83	33575		
83	100		
85	102.0	42.1	78.1#
131	7.4	7.7	11.5#

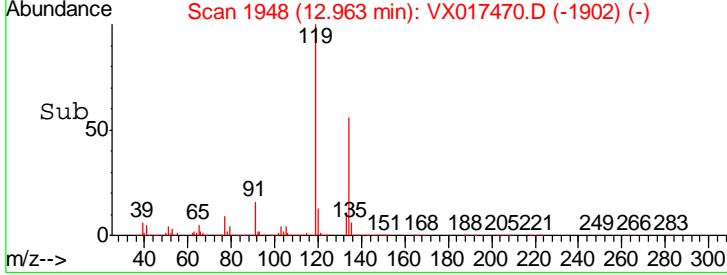
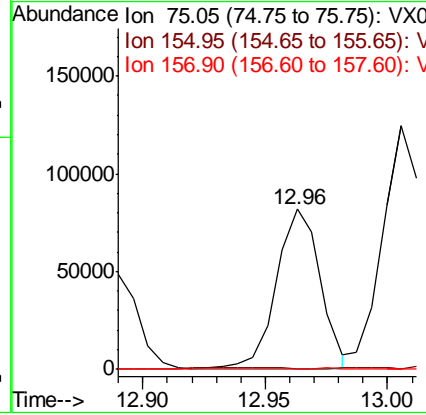
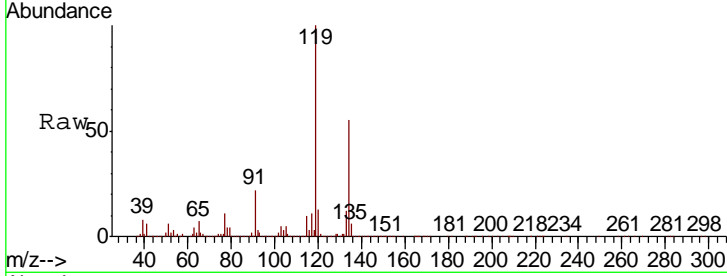




#67
 1,2-Dibromo-3-chloropropane
 Concen: 18.674 ug/L
 RT: 12.96 min Scan# 1948
 Delta R.T. -0.02 min
 Lab File: VX017470.D
 Acq: 22 Jul 2020 17:06

Instrument : MSVOA_X
 ClientSampled : GAY19

Tgt Ion	Resp	Lower	Upper
75	101493		
155	0.2	59.6	89.4#
157	0.0	78.7	118.1#



#70
 Naphthalene
 Concen: 6.684 ug/L
 RT: 13.71 min Scan# 2070
 Delta R.T. -0.11 min
 Lab File: VX017470.D
 Acq: 22 Jul 2020 17:06

Tgt Ion	Resp	Lower	Upper
128	481198		
129	108.2	8.7	13.1#
127	38.9	10.2	15.4#

