

Data Path : Z:\VOASRV\HPCHEM1\MSVOA X\DATA\VX072220\
 Data File : VX017478.D
 Acq On : 22 Jul 2020 20:20
 Operator : JC/SP
 Sample : L3395-10MSD
 Misc : 25.0mL/MSVOA X/WATER
 ALS Vial : 17 Sample Multiplier: 1

Instrument :
 MSVOA_X
 ClientSampleId :
 GAY18MSD

Quant Time: Jul 23 03:04:16 2020
 Quant Method : Z:\VOASRV\HPCHEM1\MSVOA_X\METHOD\SOMXTR072120WMA.M
 Quant Title : TRACE VOA SOM01.0
 QLast Update : Thu Jul 23 02:59:48 2020
 Response via : Initial Calibration

Internal Standards	R.T.	QIon	Response	Conc	Units	Dev(Min)
1) 1,4-Difluorobenzene	6.83	114	470778	5.00	ug/L	0.00
28) Chlorobenzene-d5	10.10	117	455425	5.00	ug/L	0.00
61) 1,4-Dichlorobenzene-d4	12.06	152	214194	5.00	ug/L	0.00

System Monitoring Compounds

4) Vinyl Chloride-d3	1.39	65	144950	3.95	ug/L	0.00
Spiked Amount	5.000	Range	40 - 130	Recovery	=	79.00%
7) Chloroethane-d5	1.69	69	113337	4.48	ug/L	0.00
Spiked Amount	5.000	Range	65 - 130	Recovery	=	89.60%
11) 1,1-Dichloroethene-d2	2.34	63	306556	4.37	ug/L	0.00
Spiked Amount	5.000	Range	60 - 125	Recovery	=	87.40%
20) 2-Butanone-d5	4.53	46	353082	51.62	ug/L	0.00
Spiked Amount	50.000	Range	40 - 130	Recovery	=	103.24%
24) Chloroform-d	5.14	84	271887	4.45	ug/L	0.00
Spiked Amount	5.000	Range	70 - 125	Recovery	=	89.00%
26) 1,2-Dichloroethane-d4	6.03	65	147167	4.20	ug/L	0.00
Spiked Amount	5.000	Range	70 - 130	Recovery	=	84.00%
32) Benzene-d6	6.04	84	531179	4.75	ug/L	0.00
Spiked Amount	5.000	Range	70 - 125	Recovery	=	95.00%
36) 1,2-Dichloropropane-d6	7.37	67	166302	5.06	ug/L	0.00
Spiked Amount	5.000	Range	60 - 140	Recovery	=	101.20%
41) Toluene-d8	8.70	98	500093	4.64	ug/L	0.00
Spiked Amount	5.000	Range	70 - 130	Recovery	=	92.80%
45) trans-1,3-Dichloropropene-	8.99	79	67470	4.68	ug/L	0.00
Spiked Amount	5.000	Range	55 - 130	Recovery	=	93.60%
48) 2-Hexanone-d5	9.43	63	271976	53.20	ug/L	0.00
Spiked Amount	50.000	Range	45 - 130	Recovery	=	106.40%
59) 1,1,2,2-Tetrachloroethane-	11.23	84	115679	4.51	ug/L	0.00
Spiked Amount	5.000	Range	65 - 120	Recovery	=	90.20%
65) 1,2-Dichlorobenzene-d4	12.36	152	183904	5.07	ug/L	0.00
Spiked Amount	5.000	Range	80 - 120	Recovery	=	101.40%

Target Compounds

Target Compounds	R.T.	QIon	Response	Conc	Units	Ovalue
12) 1,1-Dichloroethene	2.36	96	149341	4.484	ug/L	95
13) Acetone	2.42	43	24131	4.372	ug/L	93
14) Carbon disulfide	2.55	76	83751	0.741	ug/L	100
15) Methyl Acetate	2.75	43	2361	0.147	ug/L #	31
18) trans-1,2-Dichloroethene	3.14	96	6619	0.187	ug/L	71
21) 2-Butanone	4.79	43	512485	58.289	ug/L #	51
22) cis-1,2-Dichloroethene	4.57	96	18871	0.538	ug/L #	90
27) 1,2-Dichloroethane	6.04	62	4153	0.098	ug/L	96
30) Cyclohexane	5.54	56	7689	0.156	ug/L #	91
33) Benzene	6.12	78	698941	5.211	ug/L	100
34) Trichloroethene	7.19	95	177814	4.914	ug/L	94
35) Methylcyclohexane	7.44	83	7567	0.155	ug/L	98
42) Toluene	8.76	91	880183	6.545	ug/L	99
43) 1,3,5-Trimethylbenzene	11.49	105	16710	0.133	ug/L	93
44) 1,2,4-Trimethylbenzene	11.79	105	61201	0.493	ug/L	99
53) Chlorobenzene	10.12	112	450166	4.919	ug/L	99
54) Ethylbenzene	10.24	91	86607	0.594	ug/L	96

Data Path : Z:\VOASRV\HPCHEM1\MSVOA X\DATA\VX072220\
Data File : VX017478.D
Acq On : 22 Jul 2020 20:20
Operator : JC/SP
Sample : L3395-10MSD
Misc : 25.0mL/MSVOA X/WATER
ALS Vial : 17 Sample Multiplier: 1

Instrument :
MSVOA_X
ClientSampleId :
GAY18MSD

Quant Time: Jul 23 03:04:16 2020
Quant Method : Z:\VOASRV\HPCHEM1\MSVOA_X\METHOD\SOMXTR072120WMA.M
Quant Title : TRACE VOA SOM01.0
QLast Update : Thu Jul 23 02:59:48 2020
Response via : Initial Calibration

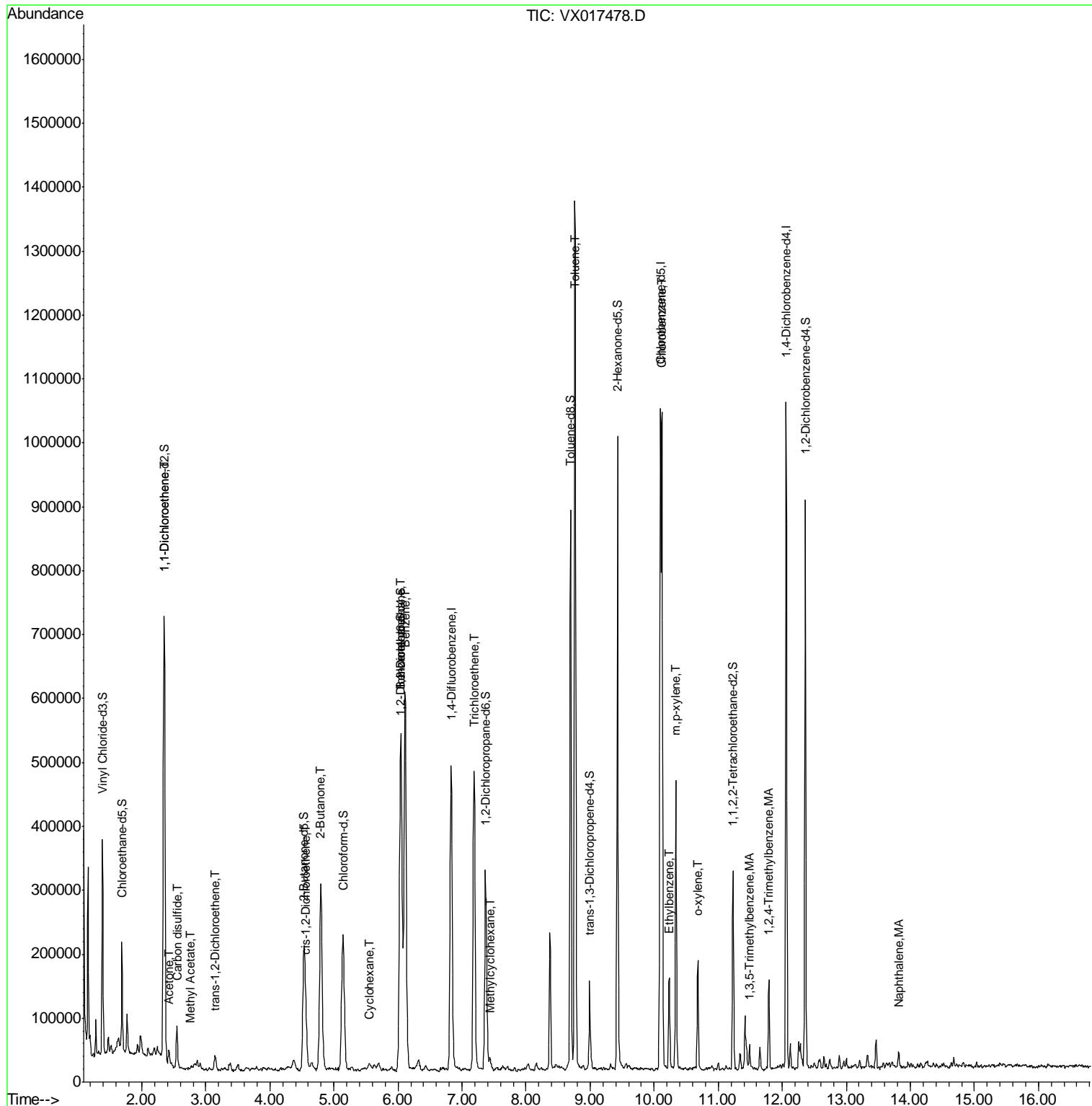
Internal Standards	R.T.	QIon	Response	Conc	Units	Dev(Min)
55) m,p-xylene	10.34	106	100189	1.721	ug/L	98
56) o-xylene	10.68	106	34842	0.617	ug/L	89
70) Naphthalene	13.82	128	14130	0.190	ug/L #	79

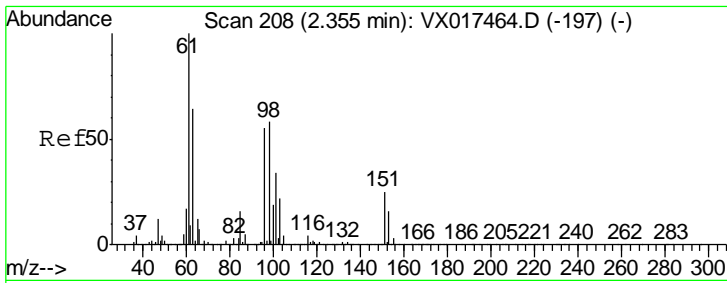
(#) = qualifier out of range (m) = manual integration (+) = signals summed

Data Path : Z:\VOASRV\HPCHEM1\MSVOA X\DATA\VX072220\
 Data File : VX017478.D
 Acq On : 22 Jul 2020 20:20
 Operator : JC/SP
 Sample : L3395-10MSD
 Misc : 25.0mL/MSVOA X/WATER
 ALS Vial : 17 Sample Multiplier: 1

Instrument :
 MSVOA_X
 Client Sampled :
 GAY18MSD

Quant Time: Jul 23 03:04:16 2020
 Quant Method : Z:\VOASRV\HPCHEM1\MSVOA_X\METHOD\SOMXTR072120WMA.M
 Quant Title : TRACE VOA SOM01.0
 QLast Update : Thu Jul 23 02:59:48 2020
 Response via : Initial Calibration

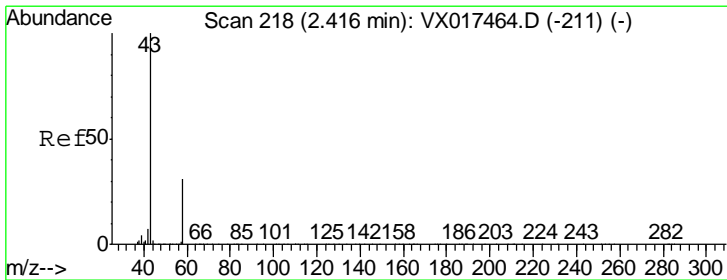
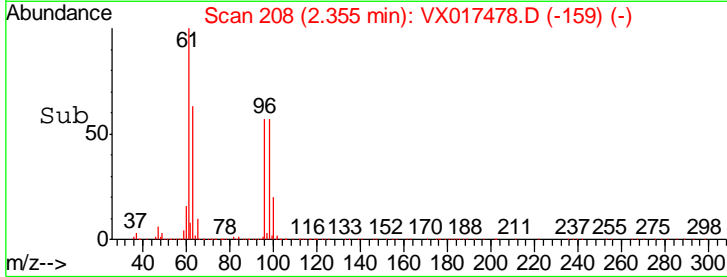
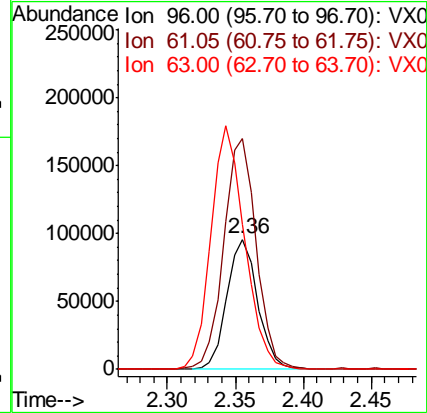
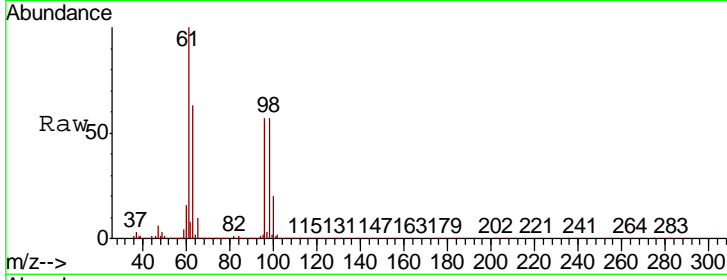




#12
 1,1-Dichloroethene
 Concen: 4.484 ug/L
 RT: 2.36 min Scan# 208
 Delta R.T. 0.00 min
 Lab File: VX017478.D
 Acq: 22 Jul 2020 20:20

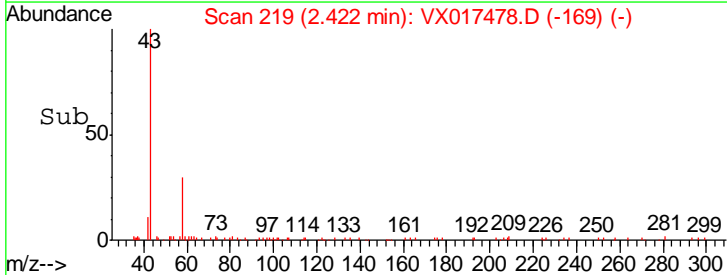
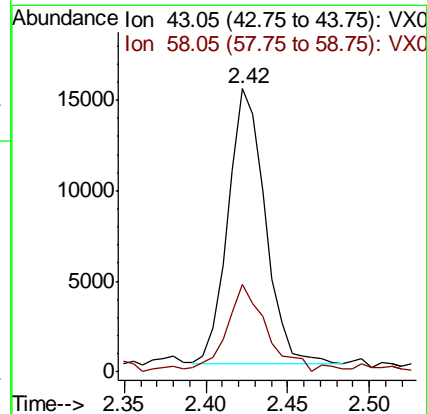
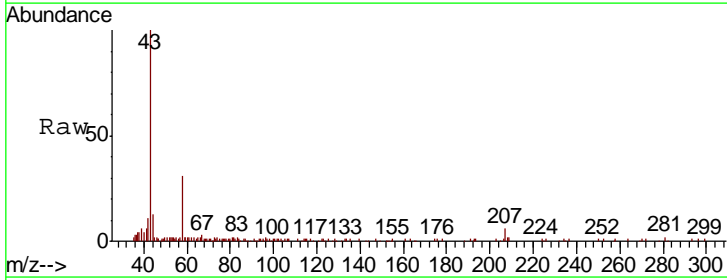
Instrument :
 MSVOA_X
 ClientSampled :
 GAY18MSD

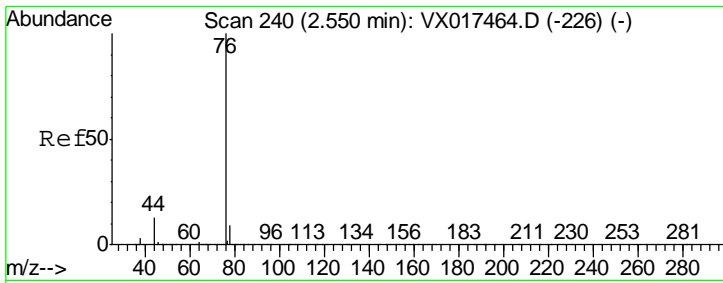
Tgt Ion	Resp	Lower	Upper
96	149341		
61	176.8	126.5	234.9
63	111.6	85.6	159.0



#13
 Acetone
 Concen: 4.372 ug/L
 RT: 2.42 min Scan# 219
 Delta R.T. 0.01 min
 Lab File: VX017478.D
 Acq: 22 Jul 2020 20:20

Tgt Ion	Resp	Lower	Upper
43	24131		
58	33.2	0.0	58.6

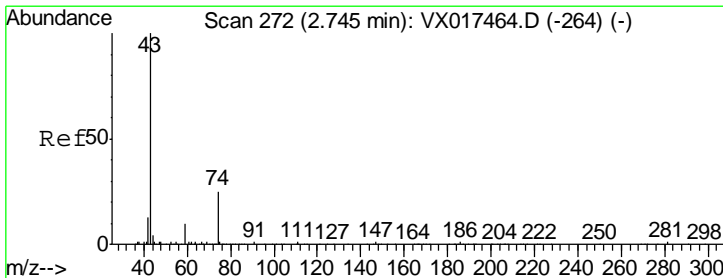
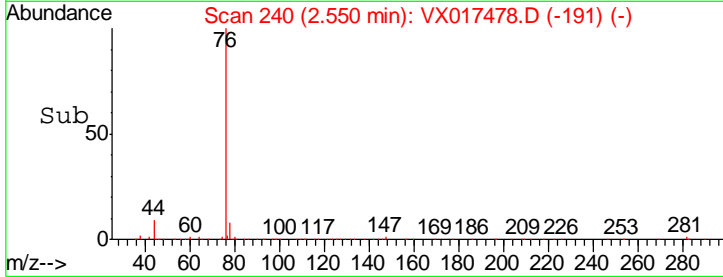
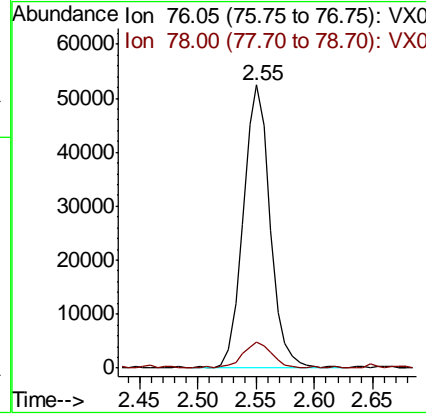
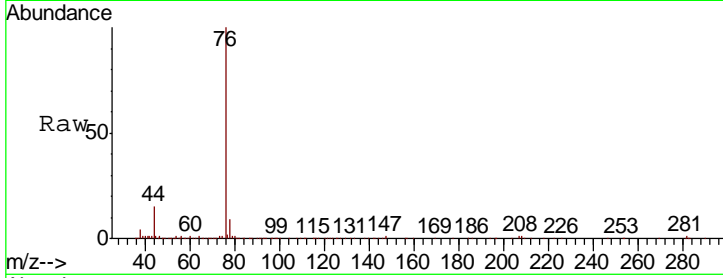




#14
 Carbon disulfide
 Concen: 0.741 ug/L
 RT: 2.55 min Scan# 240
 Delta R.T. 0.00 min
 Lab File: VX017478.D
 Acq: 22 Jul 2020 20:20

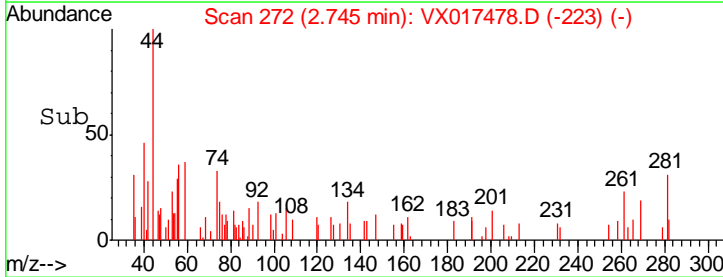
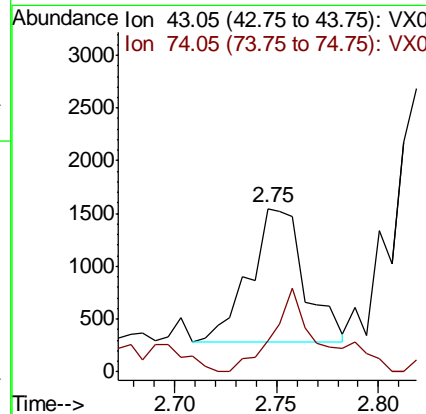
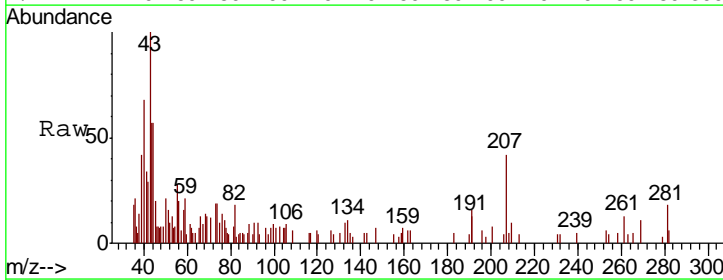
Instrument :
 MSVOA_X
 ClientSampled :
 GAY18MSD

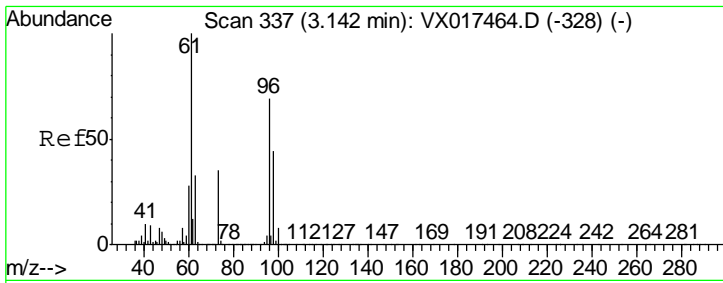
Tgt Ion	Resp	Lower	Upper
76	100		
78	9.1	7.3	10.9



#15
 Methyl Acetate
 Concen: 0.147 ug/L
 RT: 2.75 min Scan# 272
 Delta R.T. 0.00 min
 Lab File: VX017478.D
 Acq: 22 Jul 2020 20:20

Tgt Ion	Resp	Lower	Upper
43	100		
74	54.7	17.6	26.4#

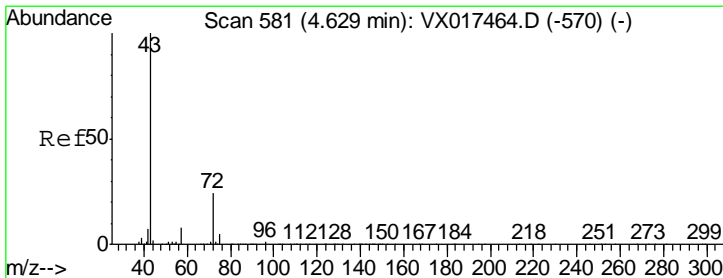
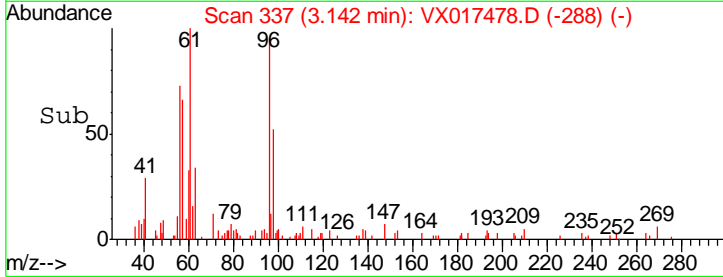
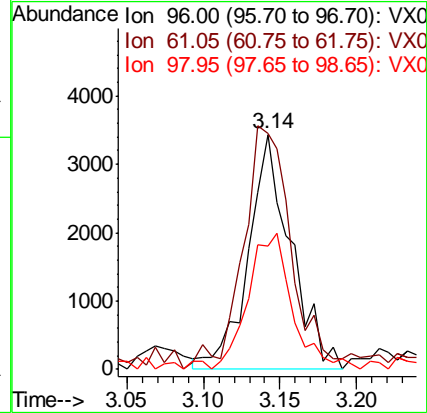
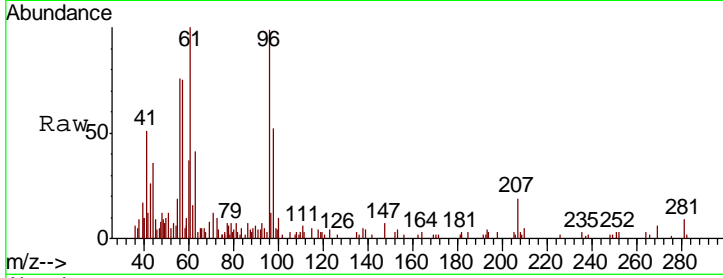




#18
 trans-1,2-Dichloroethene
 Concen: 0.187 ug/L
 RT: 3.14 min Scan# 337
 Delta R.T. 0.00 min
 Lab File: VX017478.D
 Acq: 22 Jul 2020 20:20

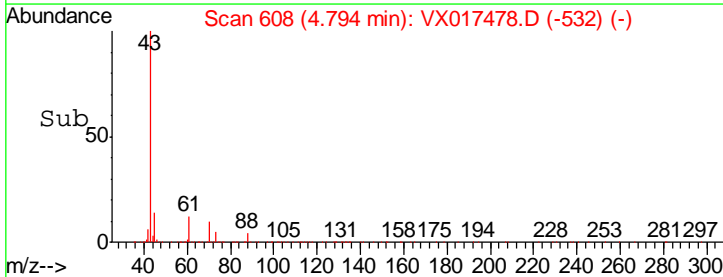
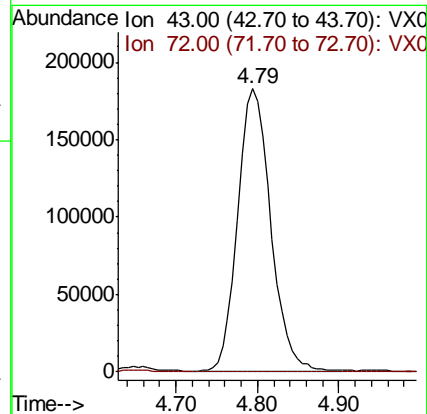
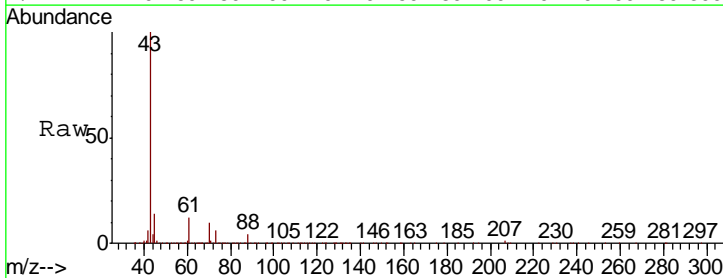
Instrument :
 MSVOA_X
 ClientSampled :
 GAY18MSD

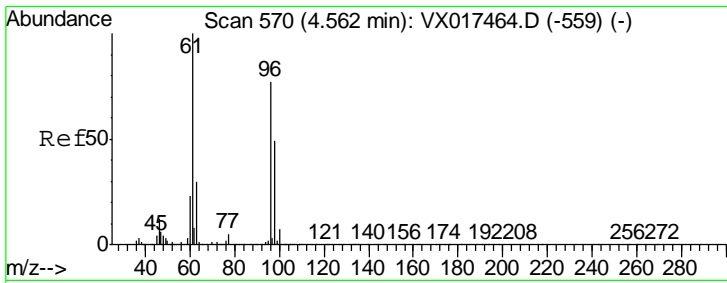
Tgt Ion	Resp	Lower	Upper
96	6619		
Ion Ratio			
96	100		
61	100.7	99.8	185.4
98	52.8	46.4	86.2



#21
 2-Butanone
 Concen: 58.289 ug/L
 RT: 4.79 min Scan# 608
 Delta R.T. 0.16 min
 Lab File: VX017478.D
 Acq: 22 Jul 2020 20:20

Tgt Ion	Resp	Lower	Upper
43	512485		
Ion Ratio			
43	100		
72	0.0	12.1	36.3#

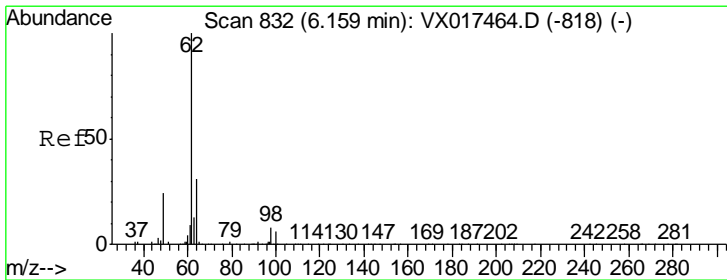
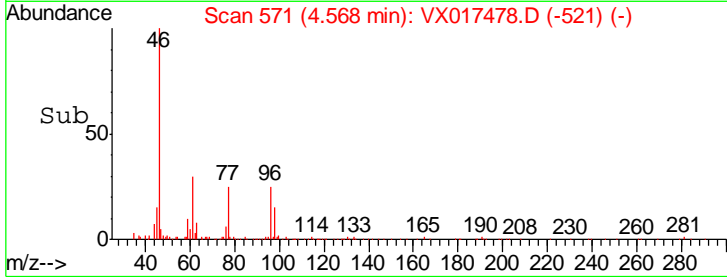
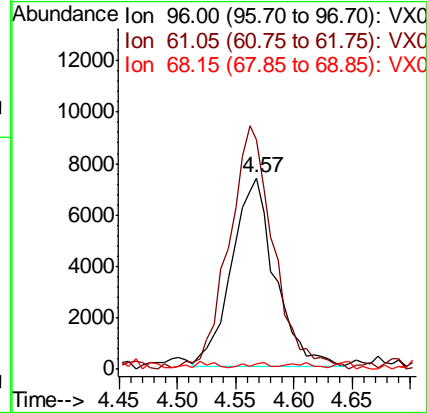
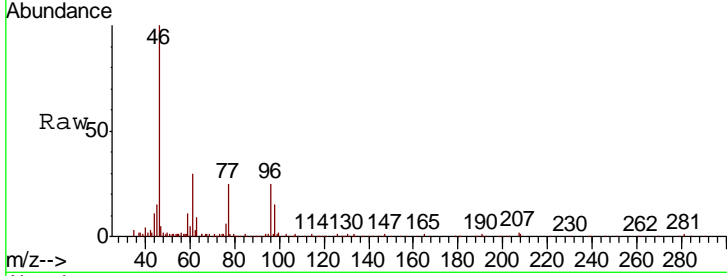




#22
 cis-1,2-Dichloroethene
 Concen: 0.538 ug/L
 RT: 4.57 min Scan# 571
 Delta R.T. 0.01 min
 Lab File: VX017478.D
 Acq: 22 Jul 2020 20:20

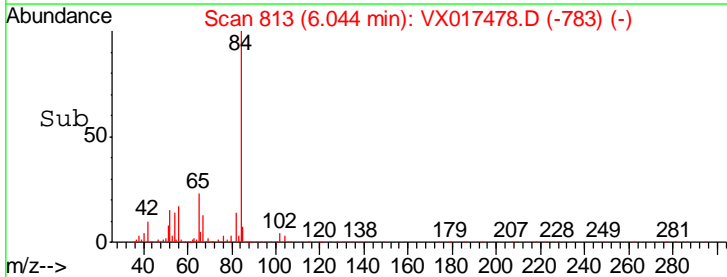
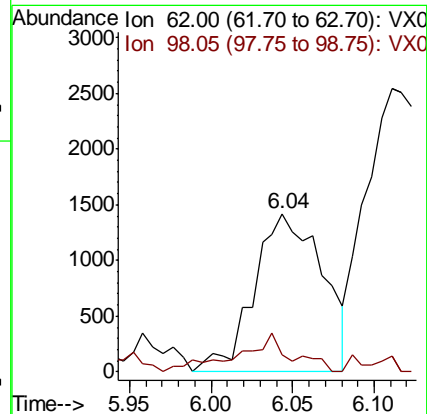
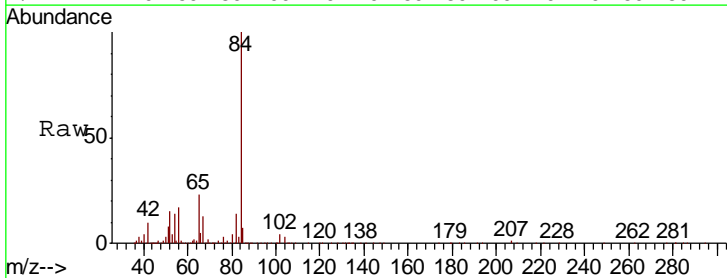
Instrument :
 MSVOA_X
 ClientSampleID :
 GAY18MSD

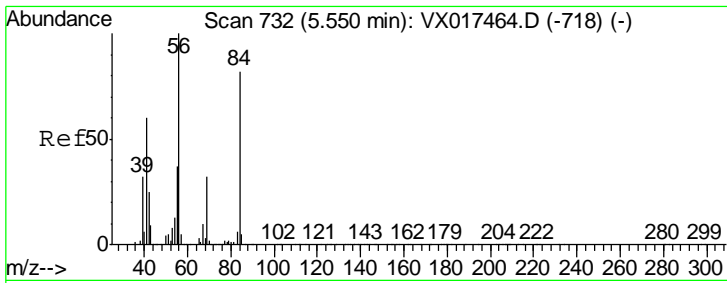
Tgt Ion	Resp	Lower	Upper
96	18871		
61	119.7	91.6	170.2
68	2.6	0.0	0.0#



#27
 1,2-Dichloroethane
 Concen: 0.098 ug/L
 RT: 6.04 min Scan# 813
 Delta R.T. -0.12 min
 Lab File: VX017478.D
 Acq: 22 Jul 2020 20:20

Tgt Ion	Resp	Lower	Upper
62	4153		
98	11.1	7.7	11.5

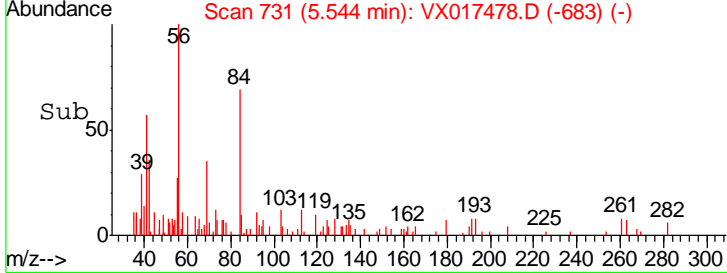
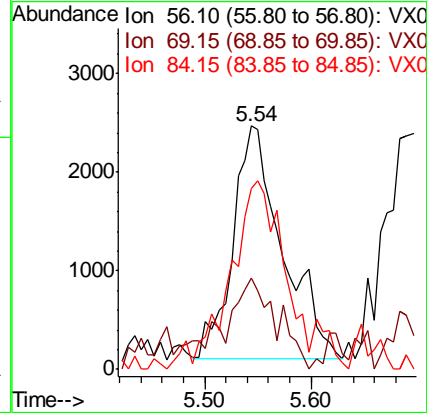
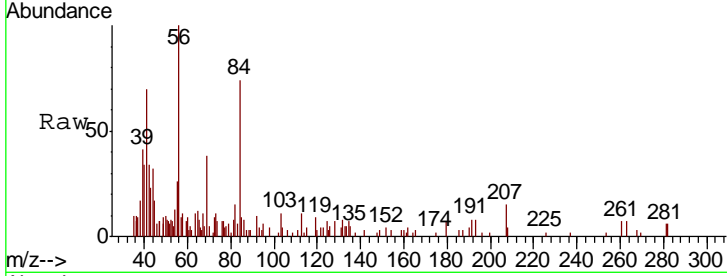




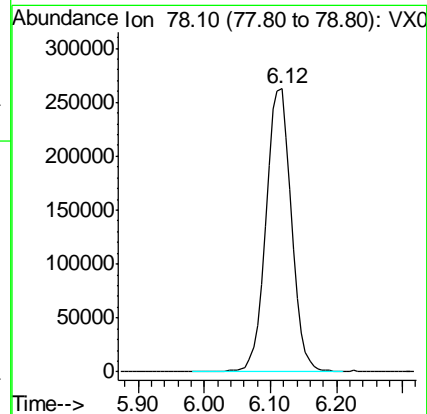
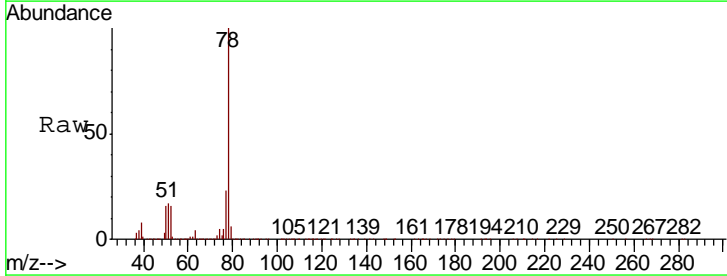
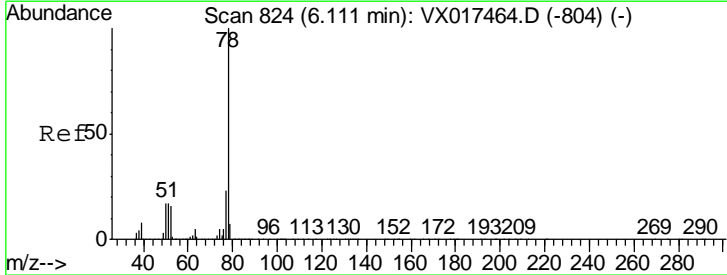
#30
 Cyclohexane
 Concen: 0.156 ug/L
 RT: 5.54 min Scan# 731
 Delta R.T. -0.01 min
 Lab File: VX017478.D
 Acq: 22 Jul 2020 20:20

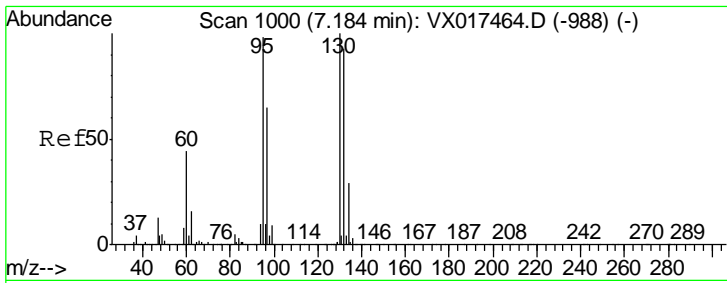
Instrument :
 MSVOA_X
 ClientSampled :
 GAY18MSD

Tgt Ion	Resp	Lower	Upper
56	100		
69	43.2	25.4	38.2#
84	82.0	69.3	103.9



#33
 Benzene
 Concen: 5.211 ug/L
 RT: 6.12 min Scan# 825
 Delta R.T. 0.01 min
 Lab File: VX017478.D
 Acq: 22 Jul 2020 20:20

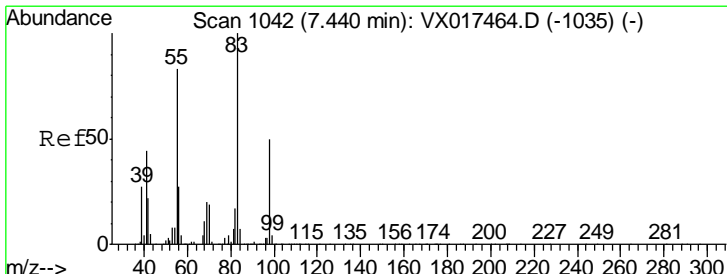
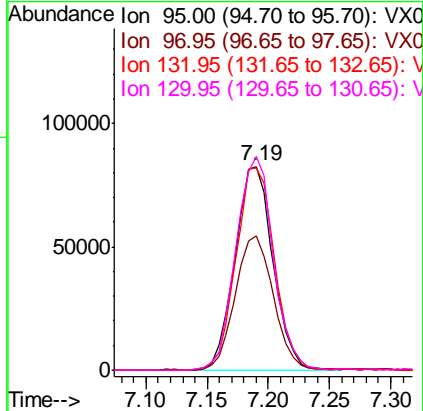
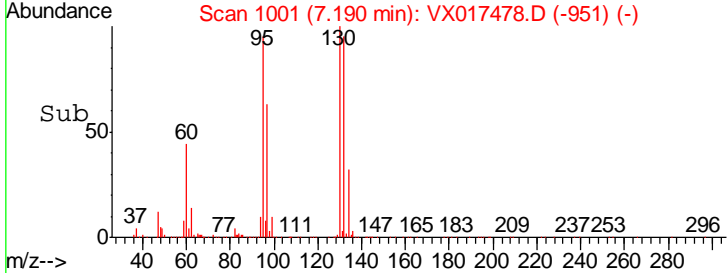
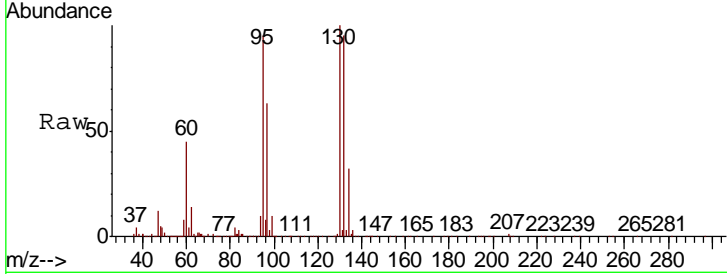




#34
 Trichloroethene
 Concen: 4.914 ug/L
 RT: 7.19 min Scan# 1001
 Delta R.T. 0.01 min
 Lab File: VX017478.D
 Acq: 22 Jul 2020 20:20

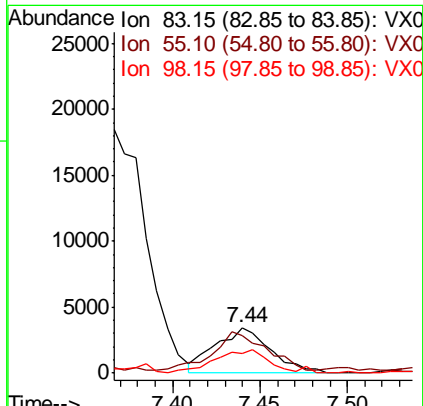
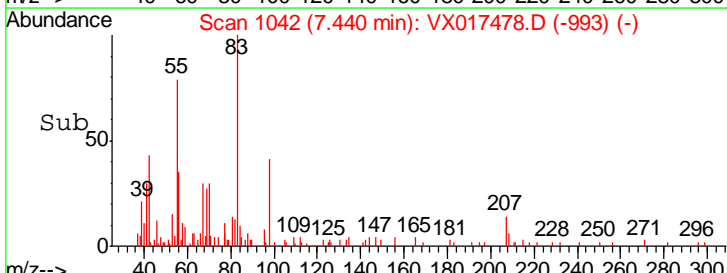
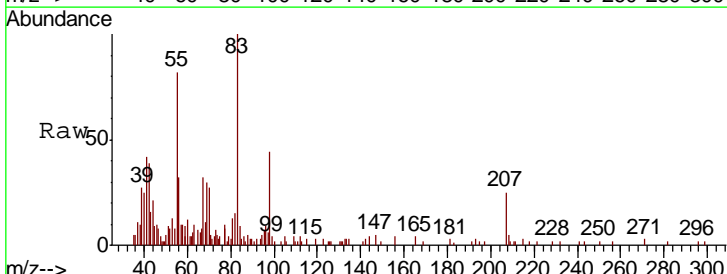
Instrument :
 MSVOA_X
ClientSampled :
 GAY18MSD

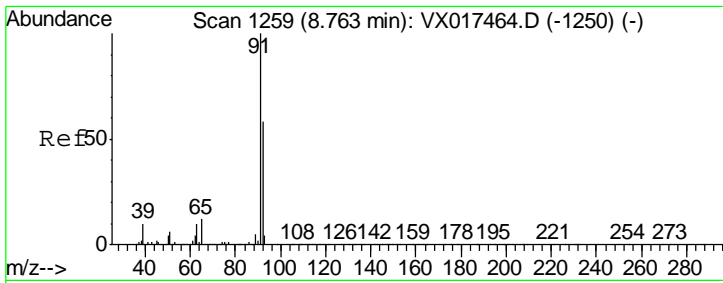
Tgt Ion	Resp	Lower	Upper
95	177814		
97	65.9	45.9	85.3
132	99.2	65.5	121.7
130	104.9	66.5	123.5



#35
 Methylcyclohexane
 Concen: 0.155 ug/L
 RT: 7.44 min Scan# 1042
 Delta R.T. 0.00 min
 Lab File: VX017478.D
 Acq: 22 Jul 2020 20:20

Tgt Ion	Resp	Lower	Upper
83	7567		
55	83.5	65.4	98.2
98	51.9	39.8	59.8

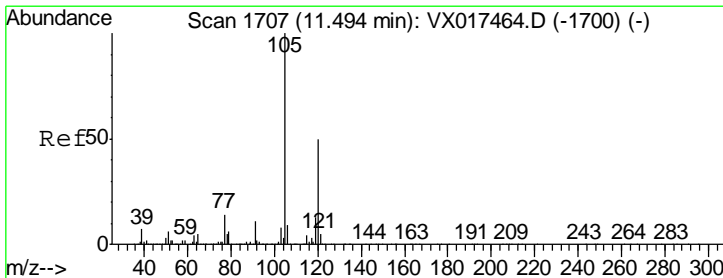
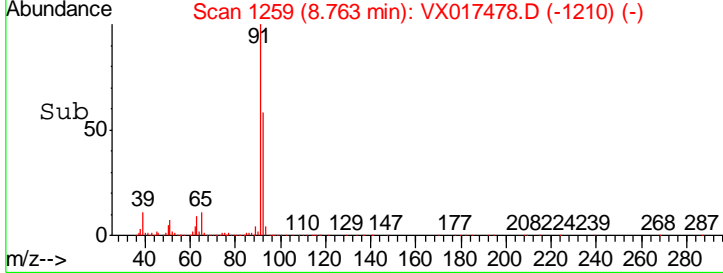
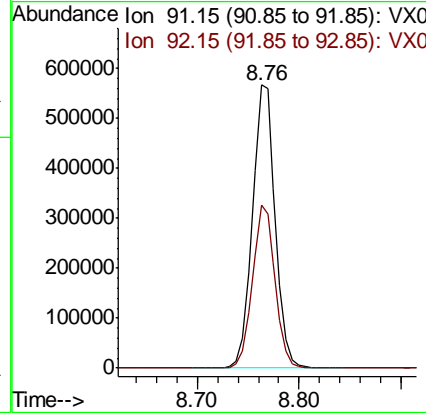
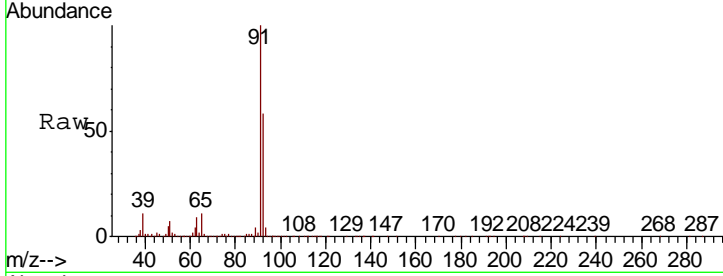




#42
 Toluene
 Concen: 6.545 ug/L
 RT: 8.76 min Scan# 1259
 Delta R.T. 0.00 min
 Lab File: VX017478.D
 Acq: 22 Jul 2020 20:20

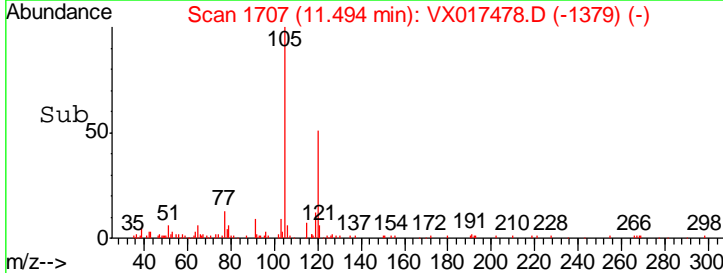
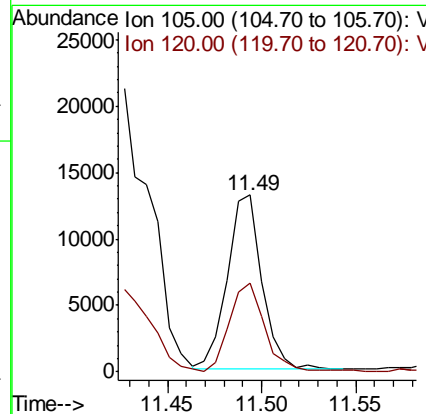
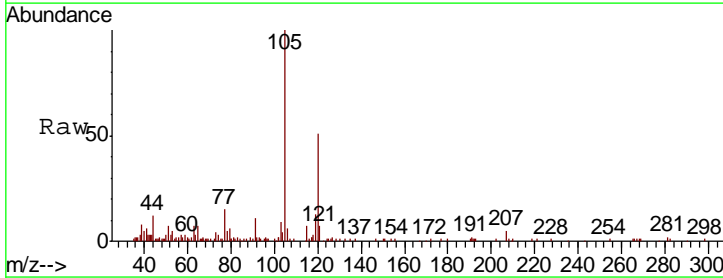
Instrument : MSVOA_X
 ClientSampled : GAY18MSD

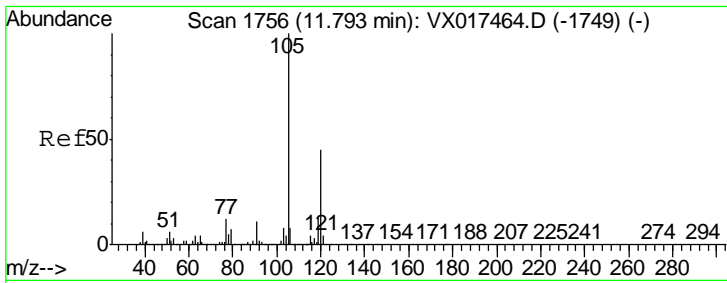
Tgt Ion	Resp	Lower	Upper
91	880183		
92	57.8	39.9	74.1



#43
 1,3,5-Trimethylbenzene
 Concen: 0.133 ug/L
 RT: 11.49 min Scan# 1707
 Delta R.T. 0.00 min
 Lab File: VX017478.D
 Acq: 22 Jul 2020 20:20

Tgt Ion	Resp	Lower	Upper
105	16710		
120	52.7	38.2	57.2

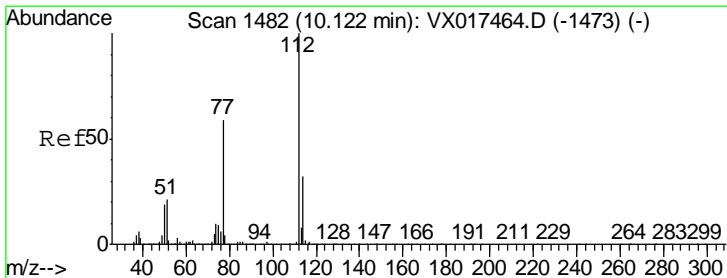
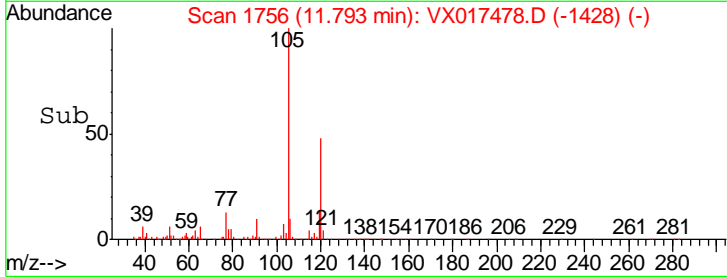
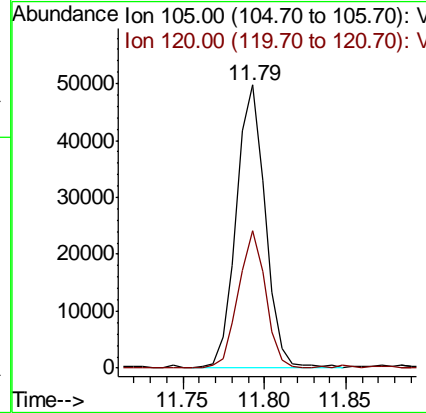
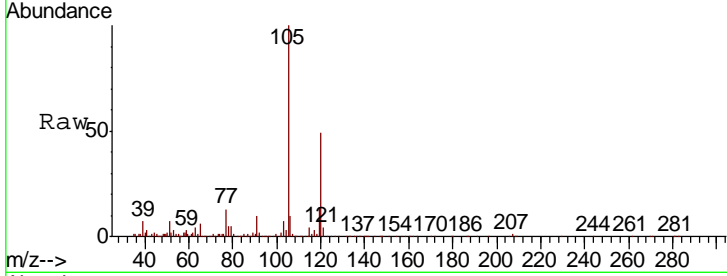




#44
 1,2,4-Trimethylbenzene
 Concen: 0.493 ug/L
 RT: 11.79 min Scan# 1756
 Delta R.T. 0.00 min
 Lab File: VX017478.D
 Acq: 22 Jul 2020 20:20

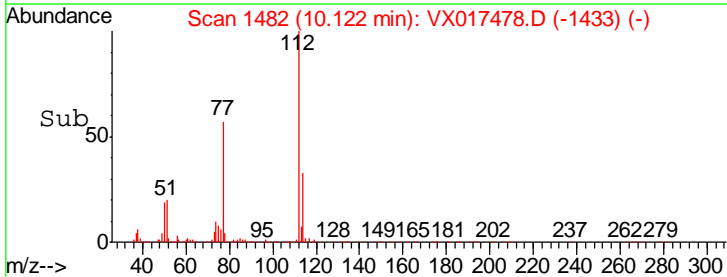
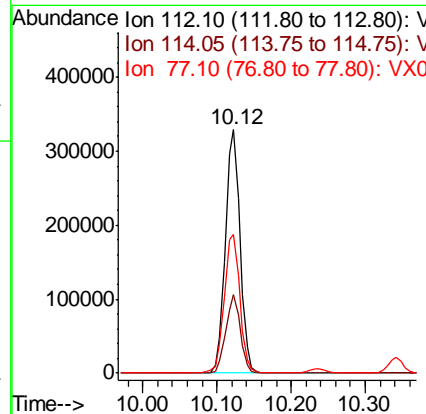
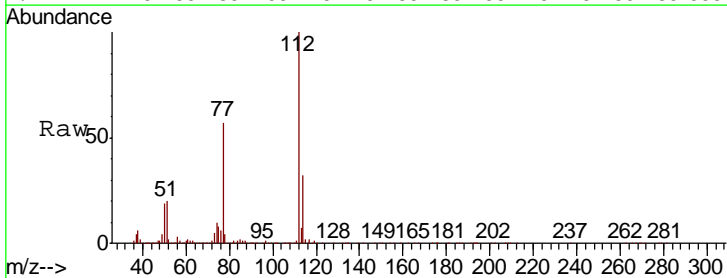
Instrument :
 MSVOA_X
 ClientSampled :
 GAY18MSD

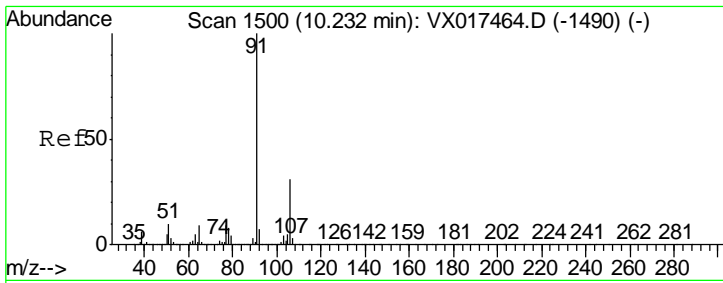
Tgt Ion	Resp	Lower	Upper
105	61201		
120	46.2	36.5	54.7



#53
 Chlorobenzene
 Concen: 4.919 ug/L
 RT: 10.12 min Scan# 1482
 Delta R.T. 0.00 min
 Lab File: VX017478.D
 Acq: 22 Jul 2020 20:20

Tgt Ion	Resp	Lower	Upper
112	450166		
114	32.5	23.1	42.9
77	57.0	46.2	69.2

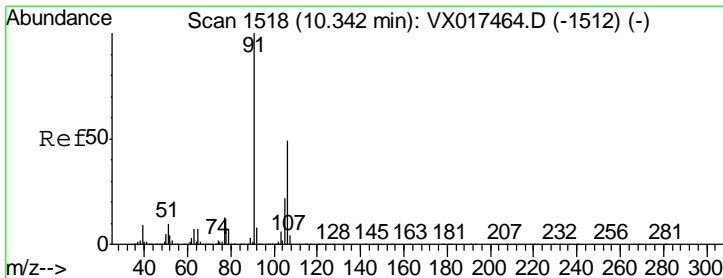
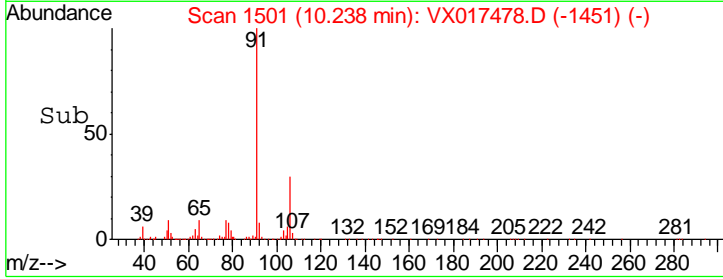
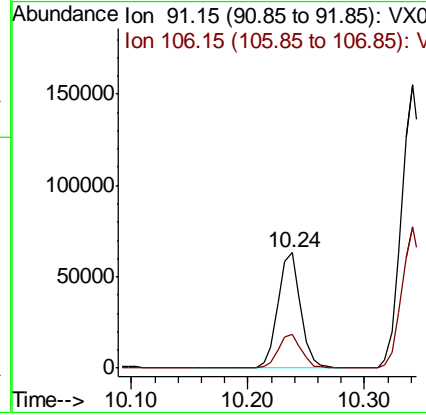
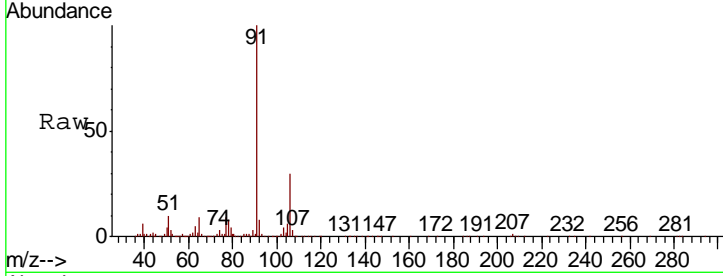




#54
 Ethylbenzene
 Concen: 0.594 ug/L
 RT: 10.24 min Scan# 1501
 Delta R.T. 0.01 min
 Lab File: VX017478.D
 Acq: 22 Jul 2020 20:20

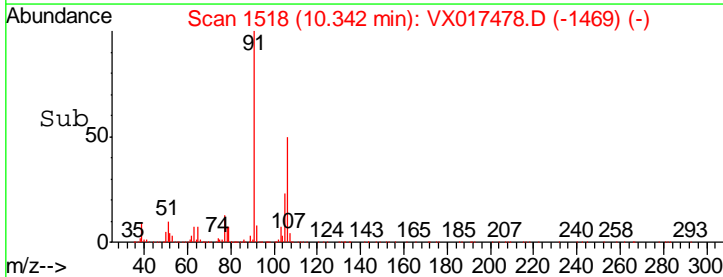
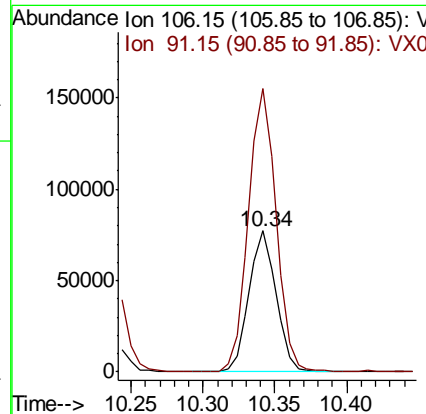
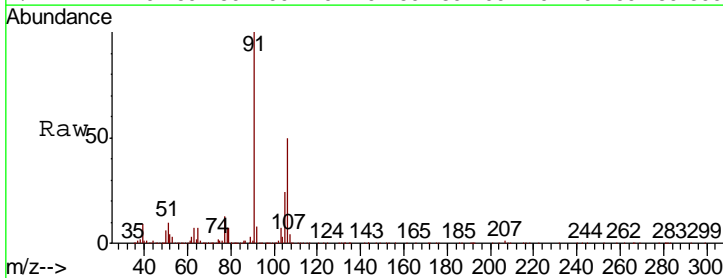
Instrument : MSVOA_X
 ClientSampled : GAY18MSD

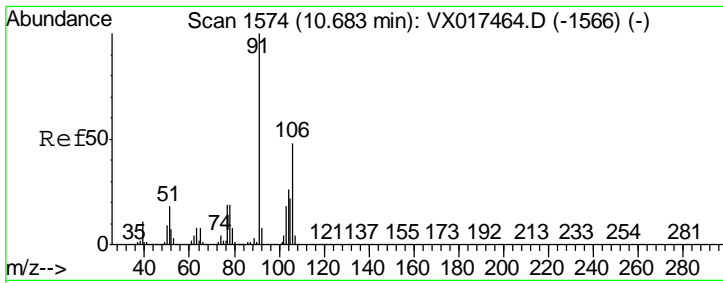
Tgt Ion	Resp	Lower	Upper
91	100		
106	29.8	22.5	41.7



#55
 m,p-xylene
 Concen: 1.721 ug/L
 RT: 10.34 min Scan# 1518
 Delta R.T. 0.00 min
 Lab File: VX017478.D
 Acq: 22 Jul 2020 20:20

Tgt Ion	Resp	Lower	Upper
106	100		
91	201.2	142.7	264.9

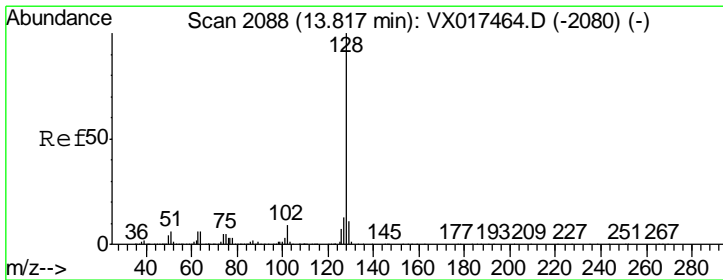
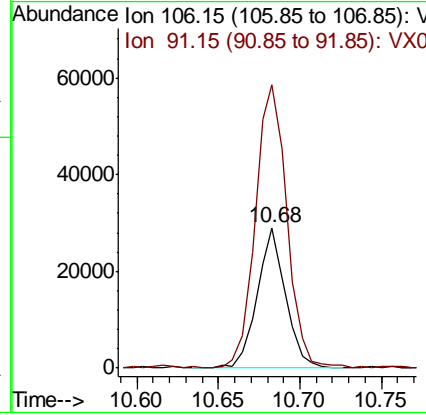
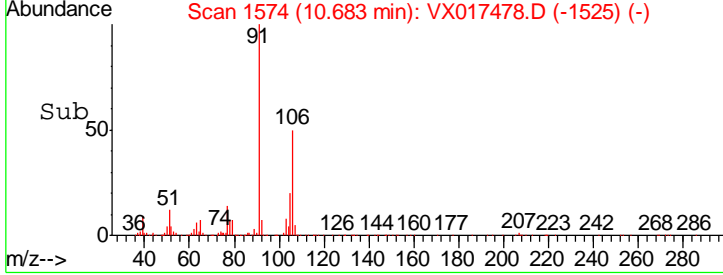
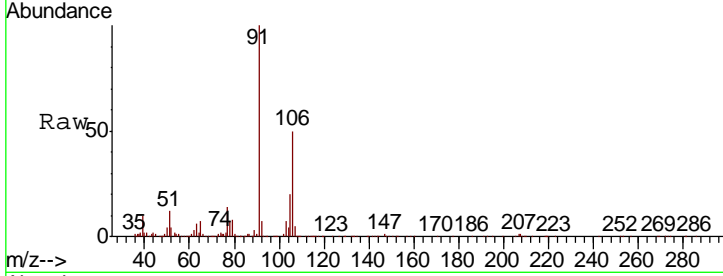




#56
 o-xylene
 Concen: 0.617 ug/L
 RT: 10.68 min Scan# 1574
 Delta R.T. 0.00 min
 Lab File: VX017478.D
 Acq: 22 Jul 2020 20:20

Instrument : MSVOA_X
 ClientSampled : GAY18MSD

Tgt Ion	Resp	Lower	Upper
106	34842		
106	100		
91	201.8	153.4	284.8



#70
 Naphthalene
 Concen: 0.190 ug/L
 RT: 13.82 min Scan# 2088
 Delta R.T. 0.00 min
 Lab File: VX017478.D
 Acq: 22 Jul 2020 20:20

Tgt Ion	Resp	Lower	Upper
128	14130		
128	100		
129	17.9	8.7	13.1#
127	22.2	10.2	15.4#

