

Data Path : Z:\VOASRV\HPCHEM1\MSVOA X\DATA\VX072220\
 Data File : VX017468.D
 Acq On : 22 Jul 2020 16:17
 Operator : JC/SP
 Sample : L3395-19
 Misc : 25.0mL/MSVOA X/WATER
 ALS Vial : 7 Sample Multiplier: 1

Instrument :
 MSVOA_X
 ClientSampled :
 GAY27

Integration Parameters: rteint.p
 Integrator: RTE
 Smoothing : ON Filtering: 5
 Sampling : 1 Min Area: 3 % of largest Peak
 Start Thrs: 0.1 Max Peaks: 100
 Stop Thrs : 0 Peak Location: TOP

If leading or trailing edge < 100 prefer < Baseline drop else tangent >
 Peak separation: 5

Method : Z:\VOASRV\HPCHEM1\MSVOA_X\METHOD\SOMXTR072120WMA.M
 Title : TRACE VOA SOM01.0

Signal : TIC

peak #	R.T. min	first scan	max scan	last scan	PK TY	peak height	corr. area	corr. % max.	% of total
1	1.191	13	17	25	rVB4	9469	17263	1.51%	0.169%
2	1.386	45	49	61	rBV	186444	186497	16.33%	1.831%
3	1.593	72	83	88	rBV	22077	51818	4.54%	0.509%
4	1.691	94	99	111	rVB	132888	173936	15.23%	1.708%
5	2.343	200	206	213	rVB	293655	480019	42.02%	4.713%
6	2.416	216	218	223	rVB	14663	14418	1.26%	0.142%
7	4.532	555	565	579	rBV2	137431	399014	34.93%	3.918%
8	4.788	600	607	622	rVB3	30288	92724	8.12%	0.910%
9	5.141	653	665	677	rBV2	164058	504037	44.13%	4.949%
10	5.635	740	746	752	rVB2	8820	22634	1.98%	0.222%
11	6.044	800	813	826	rBV3	387956	1142280	100.00%	11.215%
12	6.830	930	942	953	rBV2	358865	862812	75.53%	8.471%
13	7.172	992	998	1005	rBV2	7876	22026	1.93%	0.216%
14	7.367	1022	1030	1041	rBV	239149	521718	45.67%	5.122%
15	8.373	1186	1195	1202	rBV	152091	263494	23.07%	2.587%
16	8.696	1241	1248	1255	rBV	609599	955715	83.67%	9.383%
17	8.769	1257	1260	1264	rVB3	11702	17018	1.49%	0.167%
18	8.994	1292	1297	1304	rBV2	106856	151989	13.31%	1.492%
19	9.427	1362	1368	1381	rBV	658017	951604	83.31%	9.343%
20	10.098	1471	1478	1486	rBV	757195	1102454	96.51%	10.824%
21	10.342	1513	1518	1521	rVB3	15374	22711	1.99%	0.223%
22	11.073	1634	1638	1644	rBV7	9378	18323	1.60%	0.180%
23	11.232	1657	1664	1673	rBV	226398	293344	25.68%	2.880%
24	11.969	1780	1785	1788	rBV7	11162	12711	1.11%	0.125%
25	12.061	1794	1800	1807	rBV	799740	959251	83.98%	9.418%
26	12.360	1843	1849	1855	rBV	668334	820860	71.86%	8.059%
27	12.896	1932	1937	1941	rBV	36499	46017	4.03%	0.452%
28	13.213	1987	1989	1999	rVB	13363	28392	2.49%	0.279%
29	13.725	2065	2073	2077	rBV4	36989	50040	4.38%	0.491%

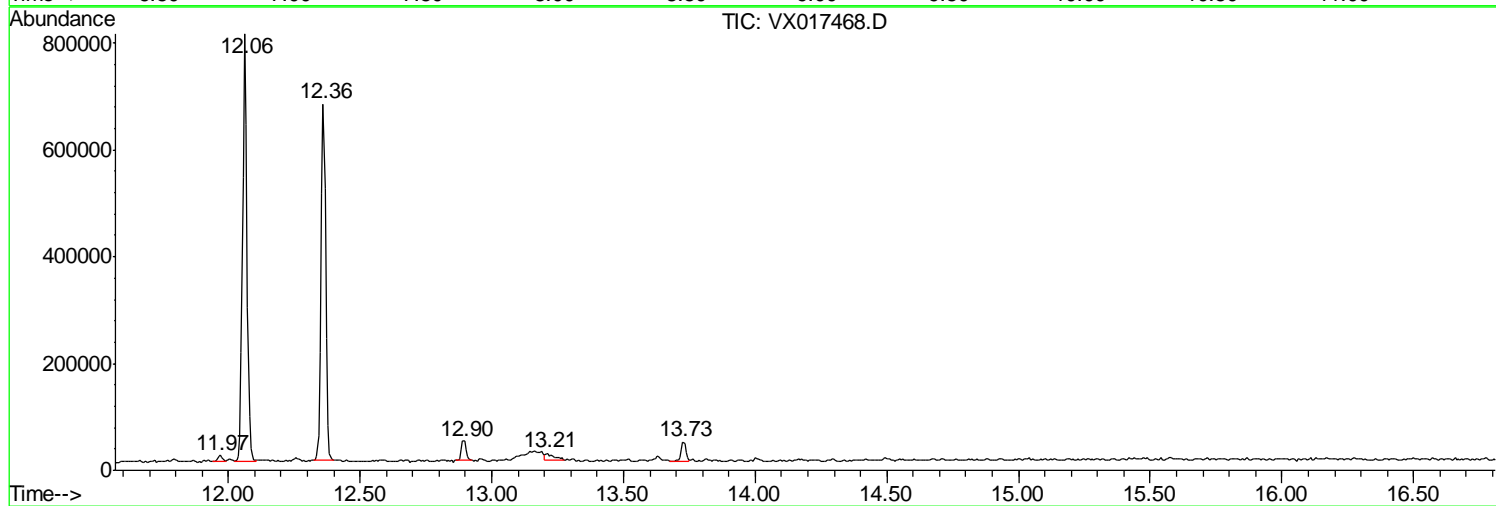
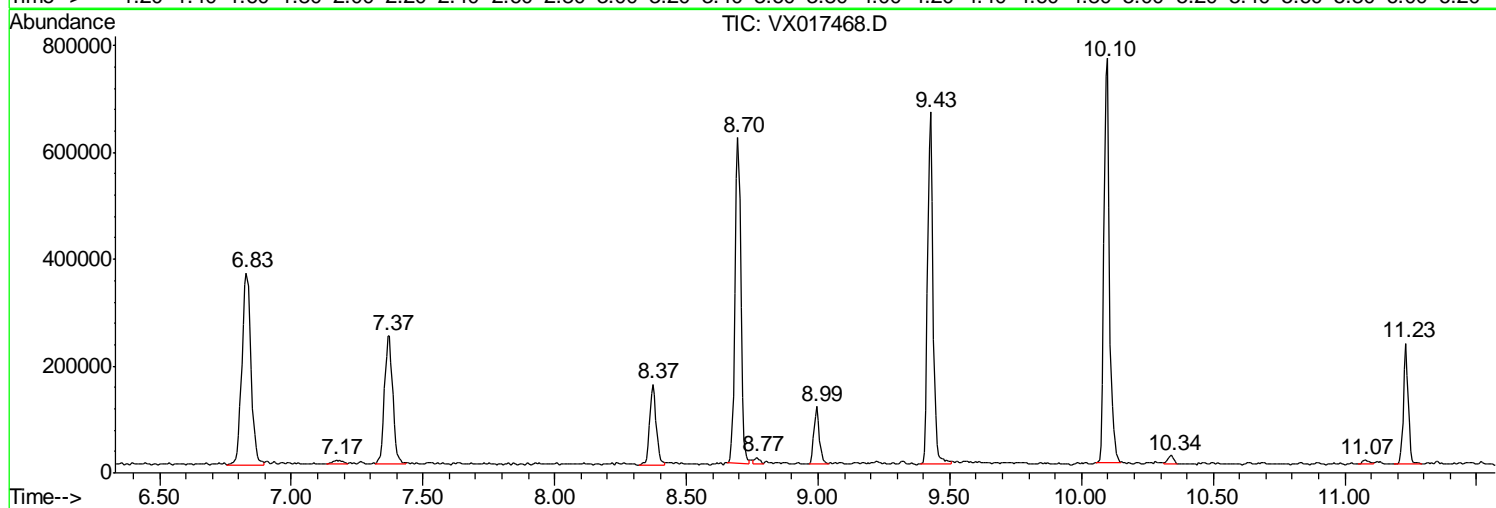
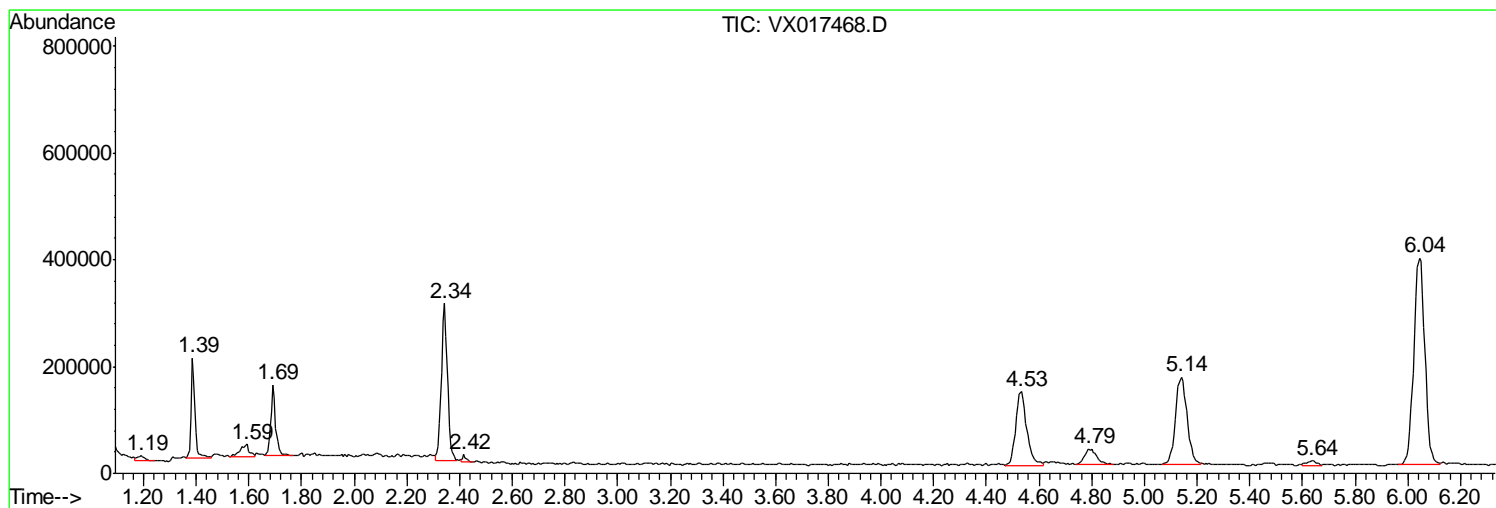
Sum of corrected areas: 10185119

Data Path : Z:\VOASRV\HPCHEM1\MSVOA X\DATA\VX072220\
Data File : VX017468.D
Acq On : 22 Jul 2020 16:17
Operator : JC/SP
Sample : L3395-19
Misc : 25.0mL/MSVOA X/WATER
ALS Vial : 7 Sample Multiplier: 1

Instrument :
MSVOA_X
ClientSampled :
GAY27

Quant Method : Z:\VOASRV\HPCHEM1\MSVOA_X\METHOD\SOMXTR072120WMA.M
Quant Title : TRACE VOA SOM01.0

TIC Library : C:\DATABASE\NIST11.L
TIC Integration Parameters: LSCINT.P



Data Path : Z:\VOASRV\HPCHEM1\MSVOA X\DATA\VX072220\
 Data File : VX017468.D
 Acq On : 22 Jul 2020 16:17
 Operator : JC/SP
 Sample : L3395-19
 Misc : 25.0mL/MSVOA X/WATER
 ALS Vial : 7 Sample Multiplier: 1

Instrument :
 MSVOA_X
 ClientSampled :
 GAY27

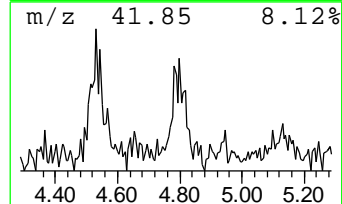
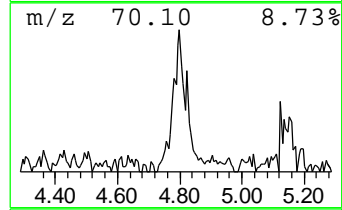
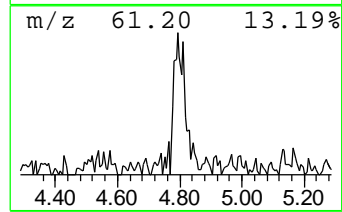
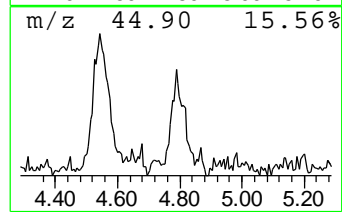
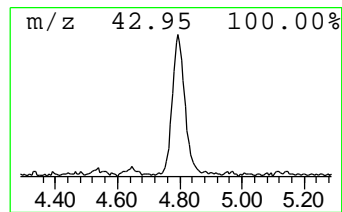
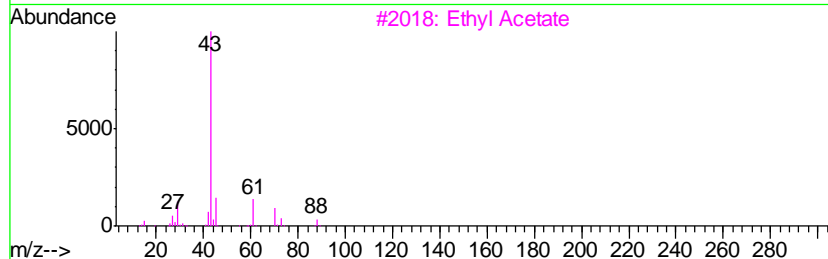
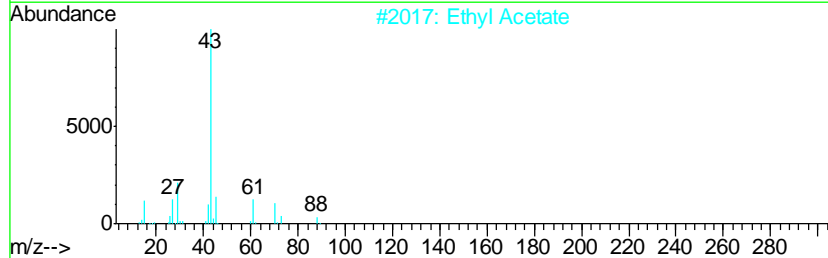
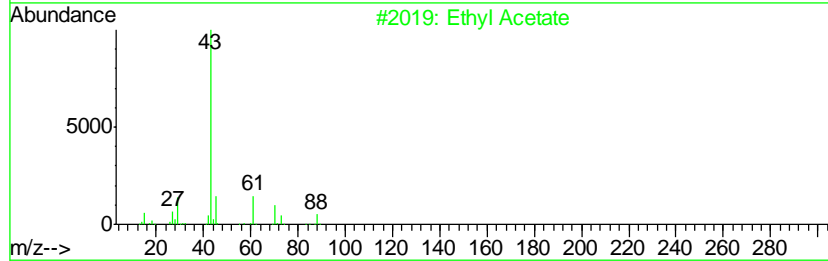
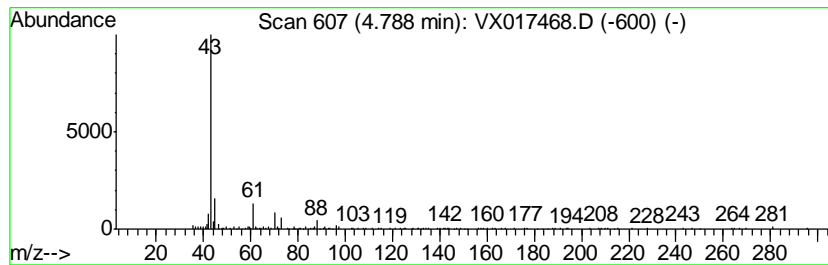
Quant Method : Z:\VOASRV\HPCHEM1\MSVOA_X\METHOD\SOMXTR072120WMA.M
 Quant Title : TRACE VOA SOM01.0

TIC Library : C:\DATABASE\NIST11.L
 TIC Integration Parameters: LSCINT.P

 Peak Number 1 Ethyl Acetate Concentration Rank 2

R.T.	EstConc	Area	Relative to ISTD	R.T.
4.79	0.54 ug/L	92724	1,4-Difluorobenzene	6.83

Hit#	of	Tentative ID	MW	MolForm	CAS#	Qual
1	5	Ethyl Acetate	88	C4H8O2	000141-78-6	72
2		Ethyl Acetate	88	C4H8O2	000141-78-6	72
3		Ethyl Acetate	88	C4H8O2	000141-78-6	72
4		CH3C(O)CH2CH2OH	88	C4H8O2	000590-90-9	50
5		Ethyl Acetate	88	C4H8O2	000141-78-6	45



Data Path : Z:\VOASRV\HPCHEM1\MSVOA_X\DATA\VX072220\
Data File : VX017468.D
Acq On : 22 Jul 2020 16:17
Operator : JC/SP
Sample : L3395-19
Misc : 25.0mL/MSVOA_X/WATER
ALS Vial : 7 Sample Multiplier: 1

Instrument :
MSVOA_X
ClientSampleId :
GAY27

Quant Method : Z:\VOASRV\HPCHEM1\MSVOA_X\METHOD\SOMXTR072120WMA.M
Quant Title : TRACE VOA SOM01.0

TIC Library : C:\DATABASE\NIST11.L
TIC Integration Parameters: LSCINT.P

TIC Top Hit name	RT	EstConc	Units	Response	--Internal Standard--			
					#	RT	Resp	Conc
Ethyl Acetate	4.79	0.5	ug/L	92724	1	6.83	862812	5.0