

Data Path : Z:\voasrv\HPCHEM1\MSVOA_X\Data\VX072221\
 Data File : VX023381.D
 Acq On : 22 Jul 2021 18:12
 Operator : JC/MD
 Sample : PB137853ZHE#02
 Misc : 5.0mL/MSVOA_X/WATER
 ALS Vial : 17 Sample Multiplier: 1

Instrument :
 MSVOA_X
 ClientSampleId :
 PB137853ZHE#02

Quant Time: Jul 23 06:08:48 2021
 Quant Method : Z:\voasrv\HPCHEM1\MSVOA_X\Method\82X072221W.M
 Quant Title : SW846 8260
 QLast Update : Fri Jul 23 06:05:38 2021
 Response via : Initial Calibration

Compound	R.T.	QIon	Response	Conc	Units	Dev(Min)

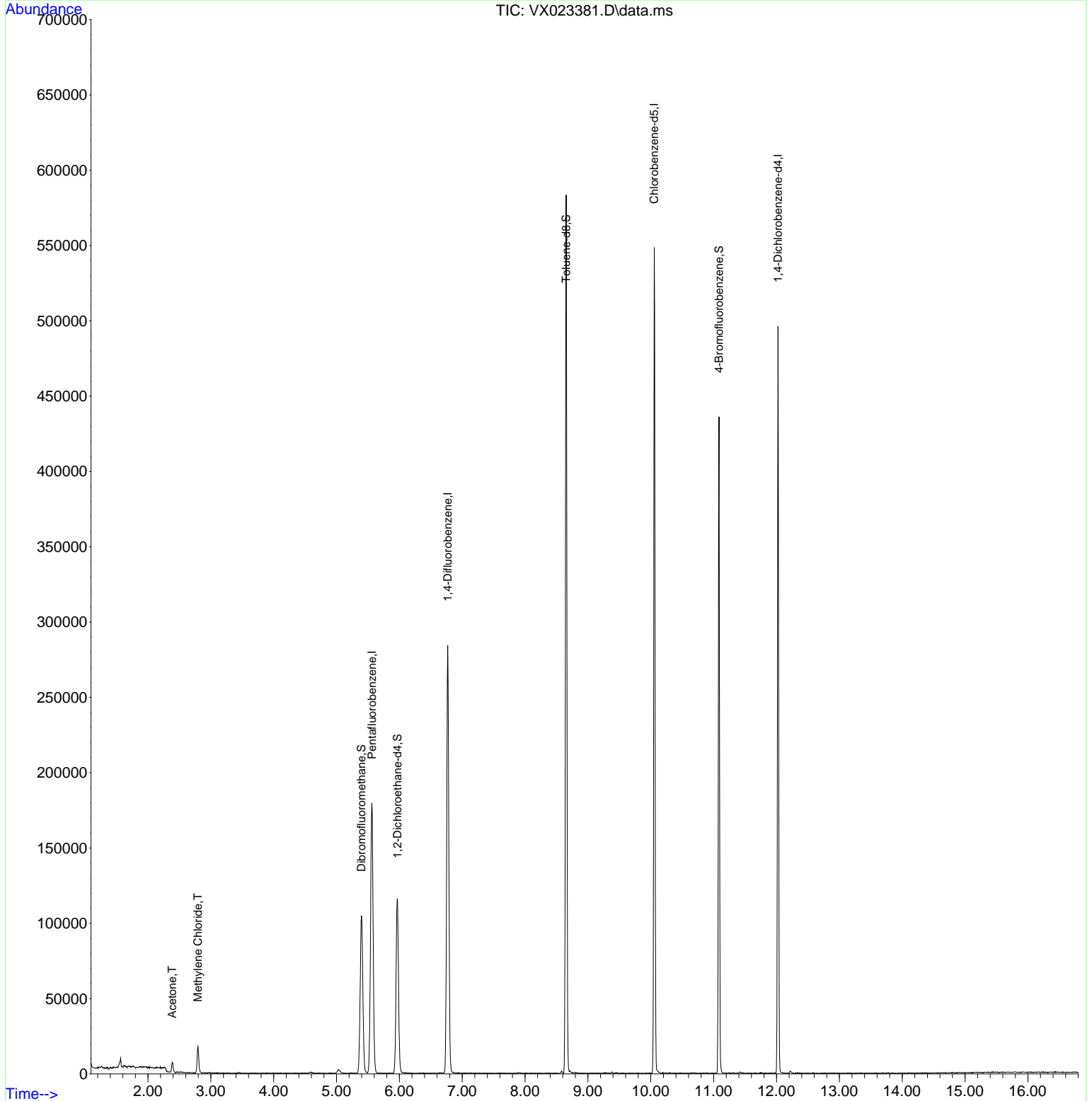
Internal Standards						
1) Pentafluorobenzene	5.562	168	173556	50.000	ug/l	0.00
34) 1,4-Difluorobenzene	6.769	114	288863	50.000	ug/l	0.00
63) Chlorobenzene-d5	10.055	117	249099	50.000	ug/l	0.00
72) 1,4-Dichlorobenzene-d4	12.024	152	102885	50.000	ug/l	0.00
System Monitoring Compounds						
33) 1,2-Dichloroethane-d4	5.971	65	110203	50.903	ug/l	0.00
Spiked Amount	50.000	Range 78 - 117	Recovery	=	101.800%	
35) Dibromofluoromethane	5.397	113	91905	50.886	ug/l	0.00
Spiked Amount	50.000	Range 75 - 124	Recovery	=	101.780%	
50) Toluene-d8	8.653	98	339110	51.104	ug/l	0.00
Spiked Amount	50.000	Range 92 - 112	Recovery	=	102.200%	
62) 4-Bromofluorobenzene	11.085	95	107787	47.770	ug/l	0.00
Spiked Amount	50.000	Range 83 - 123	Recovery	=	95.540%	
Target Compounds						
						Qvalue
16) Acetone	2.386	43	7283	6.858	ug/l	97
20) Methylene Chloride	2.794	84	7655	3.706	ug/l	94

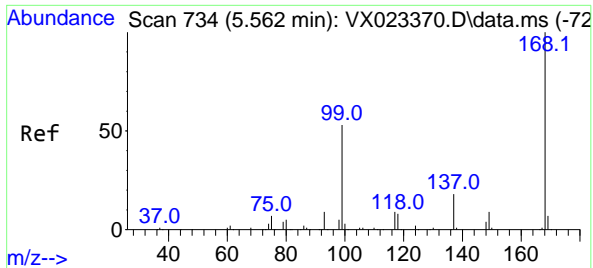
(#) = qualifier out of range (m) = manual integration (+) = signals summed

Data Path : Z:\voasrv\HPCHEM1\MSVOA_X\Data\VX072221\
 Data File : VX023381.D
 Acq On : 22 Jul 2021 18:12
 Operator : JC/MD
 Sample : PB137853ZHE#02
 Misc : 5.0mL/MSVOA_X/WATER
 ALS Vial : 17 Sample Multiplier: 1

Instrument :
 MSVOA_X
 ClientSampleId :
 PB137853ZHE#02

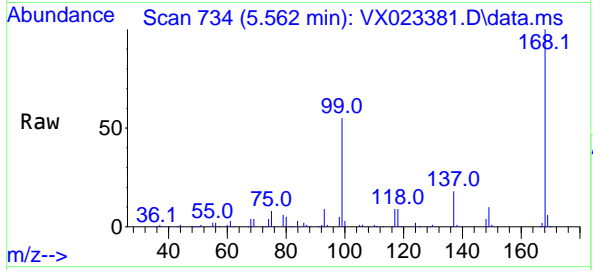
Quant Time: Jul 23 06:08:48 2021
 Quant Method : Z:\voasrv\HPCHEM1\MSVOA_X\Method\82X072221W.M
 Quant Title : SW846 8260
 QLast Update : Fri Jul 23 06:05:38 2021
 Response via : Initial Calibration



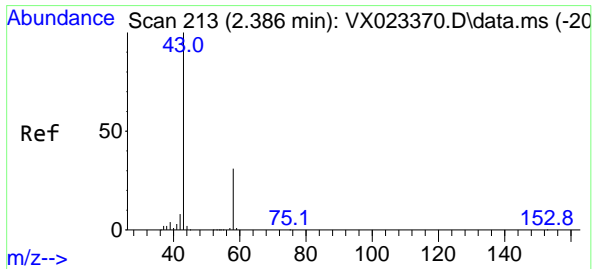
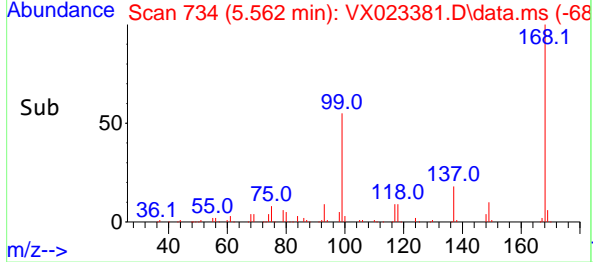
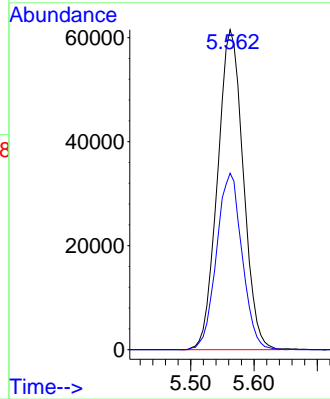


#1
 Pentafluorobenzene
 Concen: 50.000 ug/l
 RT: 5.562 min Scan# 734
 Delta R.T. 0.000 min
 Lab File: VX023381.D
 Acq: 22 Jul 2021 18:12

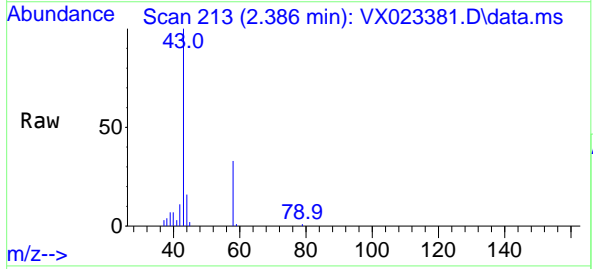
Instrument :
 MSVOA_X
 ClientSampleId :
 PB137853ZHE#02



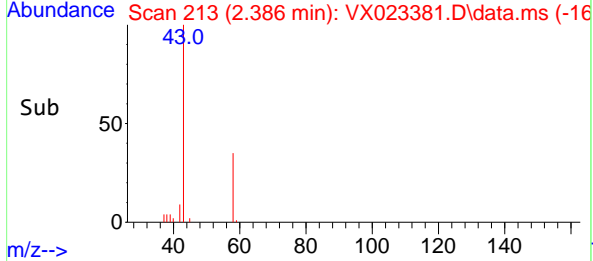
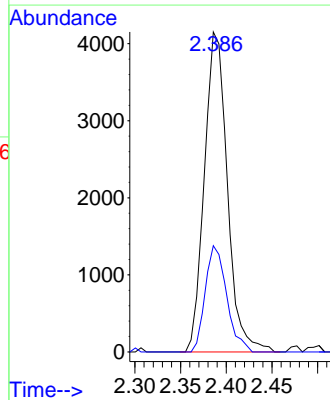
Tgt Ion:168 Resp: 173556
 Ion Ratio Lower Upper
 168 100
 99 55.2 45.8 68.6

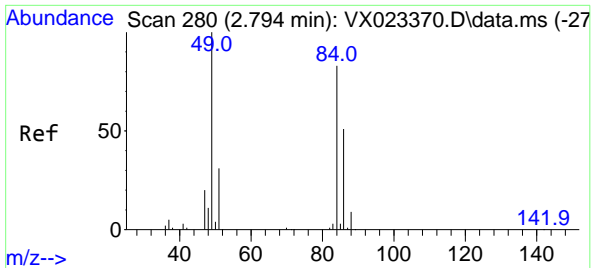


#16
 Acetone
 Concen: 6.858 ug/l
 RT: 2.386 min Scan# 213
 Delta R.T. -0.000 min
 Lab File: VX023381.D
 Acq: 22 Jul 2021 18:12



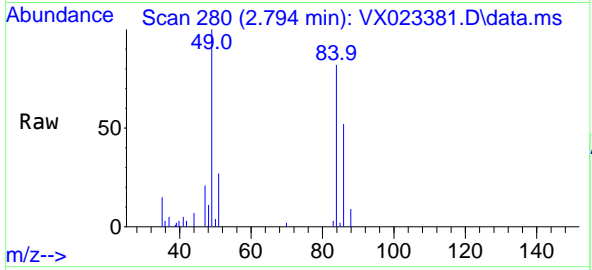
Tgt Ion: 43 Resp: 7283
 Ion Ratio Lower Upper
 43 100
 58 33.2 27.8 41.8





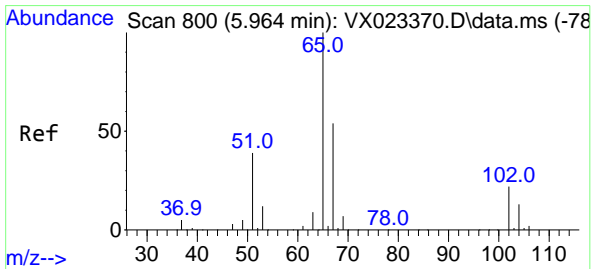
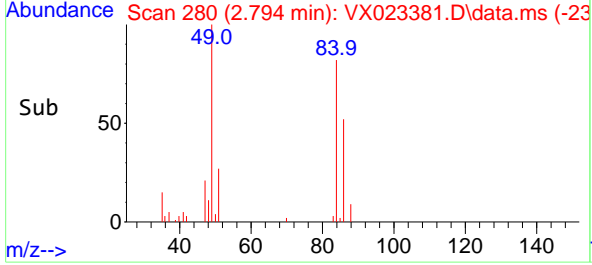
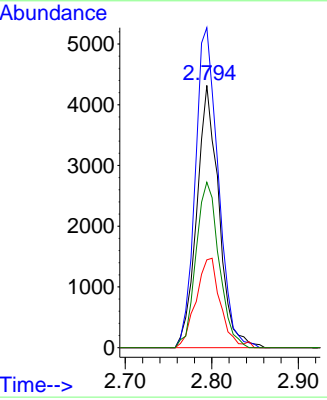
#20
 Methylene Chloride
 Concen: 3.706 ug/l
 RT: 2.794 min Scan# 280
 Delta R.T. 0.000 min
 Lab File: VX023381.D
 Acq: 22 Jul 2021 18:12

Instrument : MSVOA_X
 ClientSampleId : PB137853ZHE#02

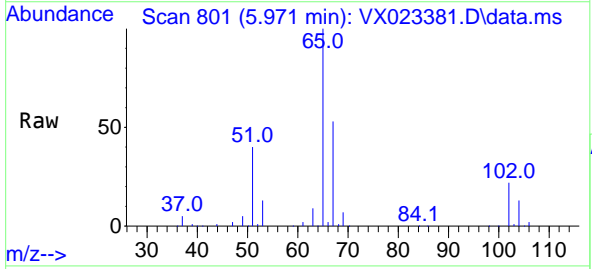


Tgt Ion: 84 Resp: 7655

Ion	Ratio	Lower	Upper
84	100		
49	122.0	88.6	132.8
51	33.5	27.0	40.6
86	63.1	50.3	75.5

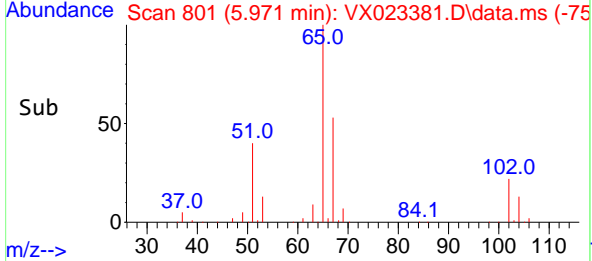
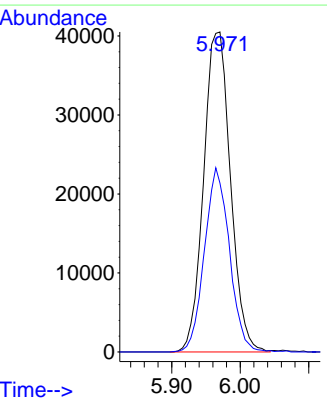


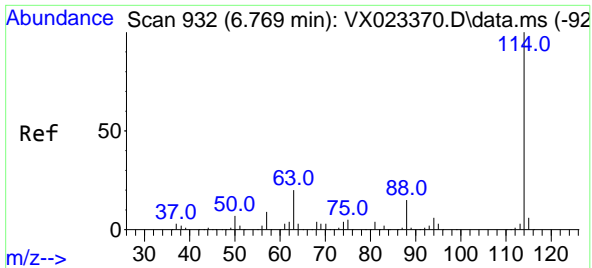
#33
 1,2-Dichloroethane-d4
 Concen: 50.903 ug/l
 RT: 5.971 min Scan# 801
 Delta R.T. 0.006 min
 Lab File: VX023381.D
 Acq: 22 Jul 2021 18:12



Tgt Ion: 65 Resp: 110203

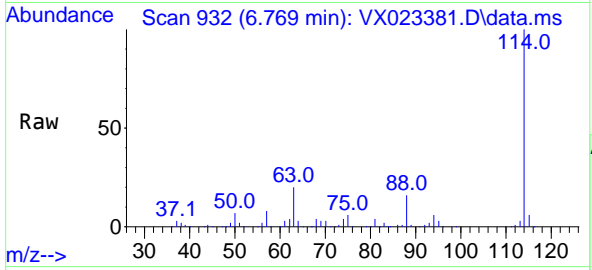
Ion	Ratio	Lower	Upper
65	100		
67	53.7	0.0	105.4





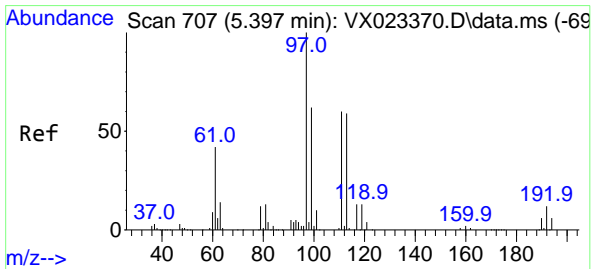
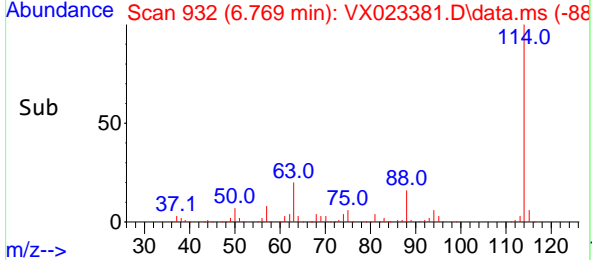
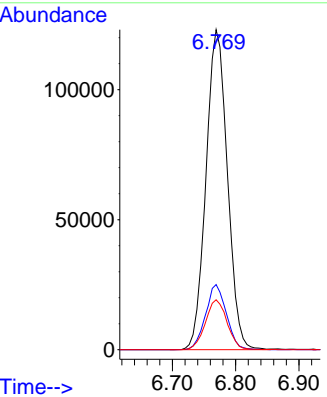
#34
 1,4-Difluorobenzene
 Concen: 50.000 ug/l
 RT: 6.769 min Scan# 932
 Delta R.T. 0.000 min
 Lab File: VX023381.D
 Acq: 22 Jul 2021 18:12

Instrument : MSVOA_X
 ClientSampleId : PB137853ZHE#02

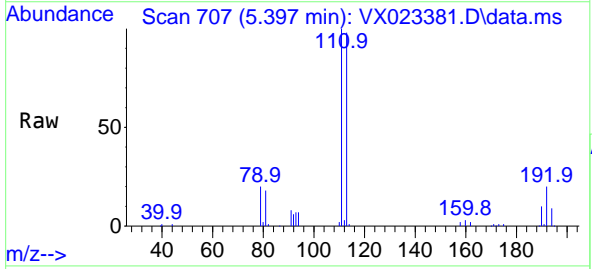


Tgt Ion:114 Resp: 288863

Ion	Ratio	Lower	Upper
114	100		
63	20.3	0.0	40.8
88	15.6	0.0	32.8

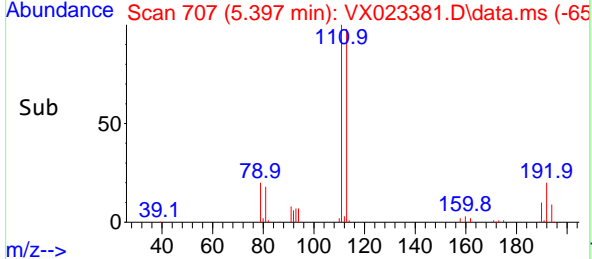
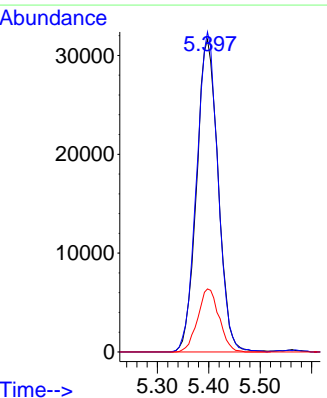


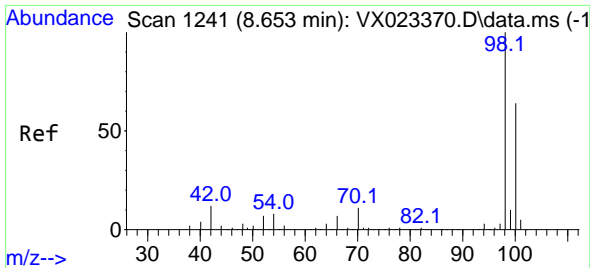
#35
 Dibromofluoromethane
 Concen: 50.886 ug/l
 RT: 5.397 min Scan# 707
 Delta R.T. 0.000 min
 Lab File: VX023381.D
 Acq: 22 Jul 2021 18:12



Tgt Ion:113 Resp: 91905

Ion	Ratio	Lower	Upper
113	100		
111	101.5	81.9	122.9
192	20.1	16.7	25.1

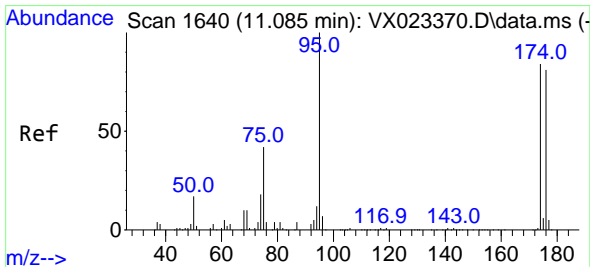
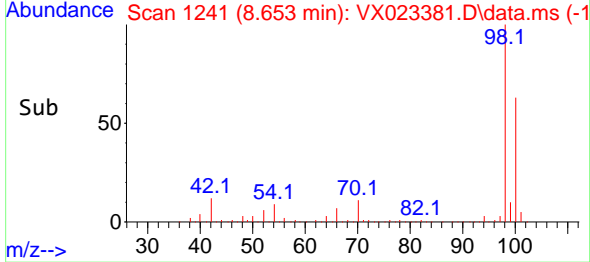
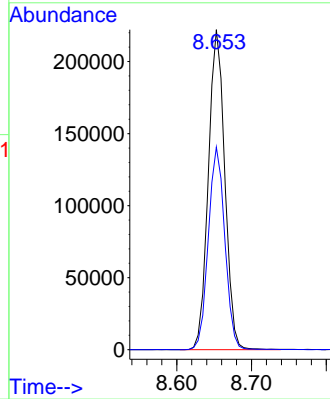
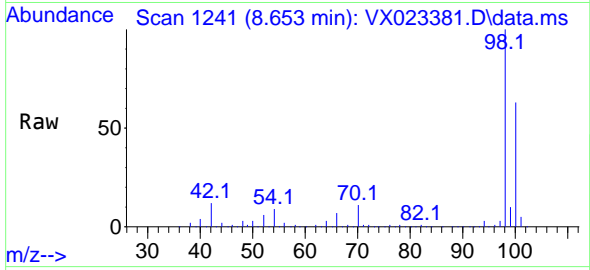




#50
 Toluene-d8
 Concen: 51.104 ug/l
 RT: 8.653 min Scan# 1241
 Delta R.T. -0.000 min
 Lab File: VX023381.D
 Acq: 22 Jul 2021 18:12

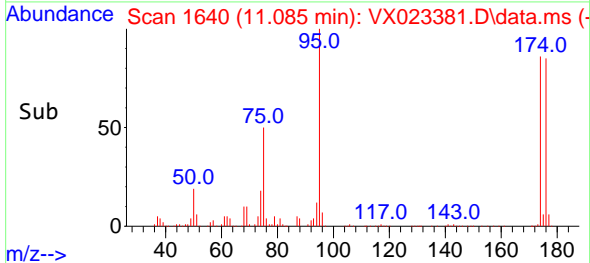
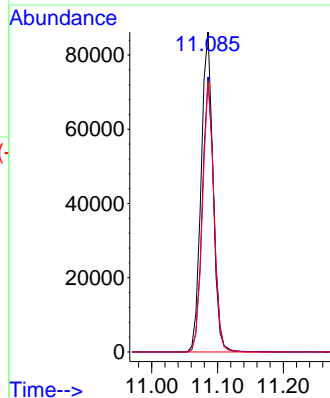
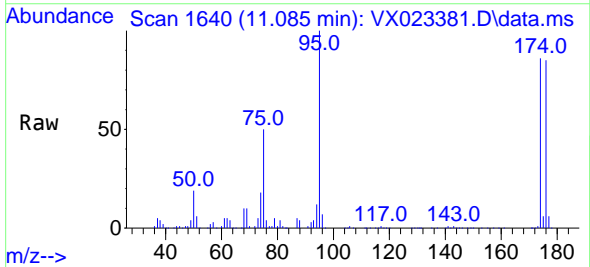
Instrument :
 MSVOA_X
 ClientSampled :
 PB137853ZHE#02

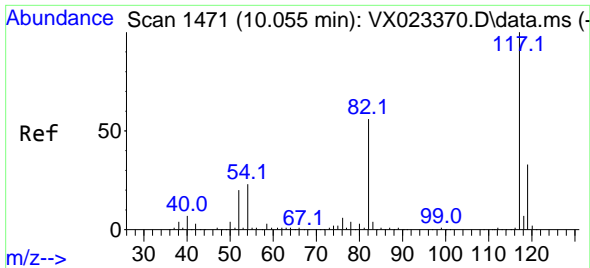
Tgt Ion: 98 Resp: 339110
 Ion Ratio Lower Upper
 98 100
 100 63.5 51.9 77.9



#62
 4-Bromofluorobenzene
 Concen: 47.770 ug/l
 RT: 11.085 min Scan# 1640
 Delta R.T. 0.000 min
 Lab File: VX023381.D
 Acq: 22 Jul 2021 18:12

Tgt Ion: 95 Resp: 107787
 Ion Ratio Lower Upper
 95 100
 174 83.5 0.0 154.6
 176 81.4 0.0 155.8



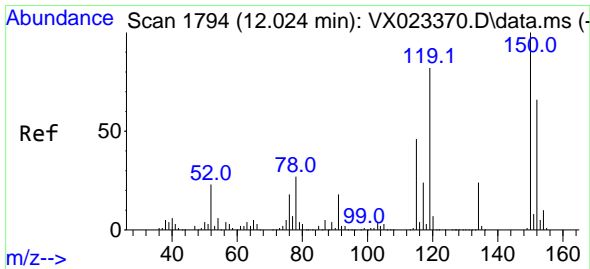
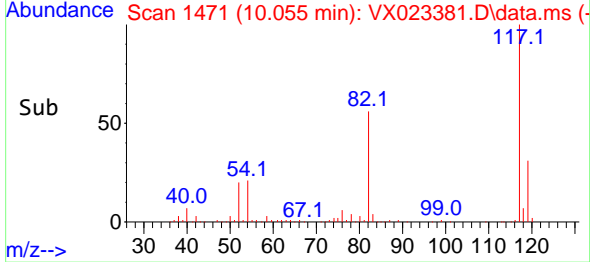
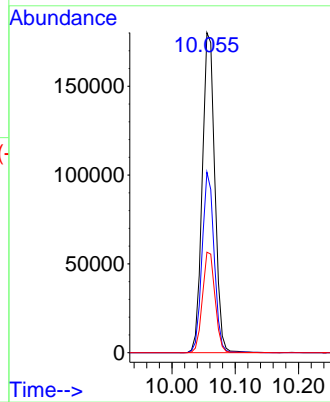
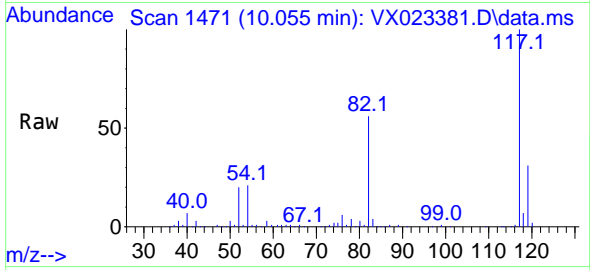


#63
 Chlorobenzene-d5
 Concen: 50.000 ug/l
 RT: 10.055 min Scan# 1471
 Delta R.T. 0.000 min
 Lab File: VX023381.D
 Acq: 22 Jul 2021 18:12

Instrument :
 MSVOA_X
 ClientSampled :
 PB137853ZHE#02

Tgt Ion:117 Resp: 249099

Ion	Ratio	Lower	Upper
117	100		
82	56.4	47.4	71.2
119	31.4	26.6	39.8



#72
 1,4-Dichlorobenzene-d4
 Concen: 50.000 ug/l
 RT: 12.024 min Scan# 1794
 Delta R.T. 0.000 min
 Lab File: VX023381.D
 Acq: 22 Jul 2021 18:12

Tgt Ion:152 Resp: 102885

Ion	Ratio	Lower	Upper
152	100		
115	57.5	41.1	123.3
150	155.6	0.0	349.0

