

Data Path : Z:\VOASRV\HPCHEM1\MSVOA X\DATA\VX072320\
 Data File : VX017512.D
 Acq On : 23 Jul 2020 23:58
 Operator : JC/SP
 Sample : PB130403ZHE#02
 Misc : 5.0mL/MSVOA X/WATER
 ALS Vial : 37 Sample Multiplier: 1

Instrument :
 MSVOA_X
 ClientSampleId :
 PB130403ZHE#02

Quant Time: Jul 24 06:04:34 2020
 Quant Method : Z:\VOASRV\HPCHEM1\MSVOA_X\METHOD\82X072320W.M
 Quant Title : SW846 8260
 QLast Update : Fri Jul 24 05:48:09 2020
 Response via : Initial Calibration

Internal Standards	R.T.	QIon	Response	Conc	Units	Dev(Min)
1) Pentafluorobenzene	5.63	168	468666	50.00	ug/l	0.00
34) 1,4-Difluorobenzene	6.84	114	787384	50.00	ug/l	0.00
63) Chlorobenzene-d5	10.10	117	870999	50.00	ug/l	0.00
72) 1,4-Dichlorobenzene-d4	12.06	152	483946	50.00	ug/l	0.00

System Monitoring Compounds

33) 1,2-Dichloroethane-d4	6.03	65	331784	55.11	ug/l	0.00
Spiked Amount	50.000		Recovery	=	110.22%	
35) Dibromofluoromethane	5.47	113	259957	49.36	ug/l	0.00
Spiked Amount	50.000		Recovery	=	98.72%	
50) Toluene-d8	8.70	98	1051222	55.34	ug/l	0.00
Spiked Amount	50.000		Recovery	=	110.68%	
62) 4-Bromofluorobenzene	11.12	95	464990	61.16	ug/l	0.00
Spiked Amount	50.000		Recovery	=	122.32%	

Target Compounds

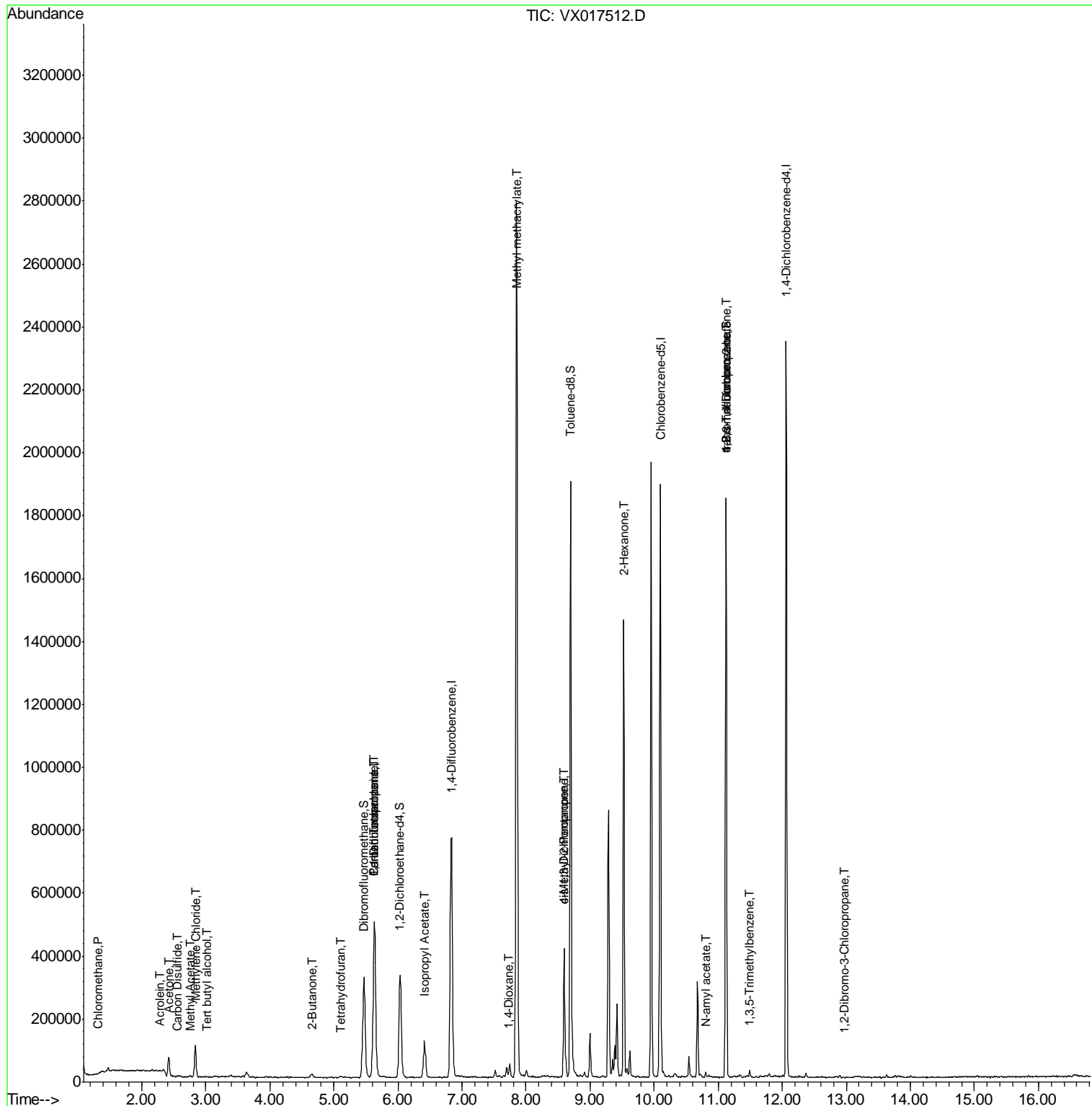
					Qvalue
2) Dichlorodifluoromethane	1.19	85	442	Below Cal	72
3) Chloromethane	1.31	50	1277	0.586 ug/l	89
5) Bromomethane	1.60	94	386	Below Cal	# 34
6) Chloroethane	1.70	64	448	Below Cal	# 40
8) Diethyl Ether	2.18	74	2196	Below Cal	92
11) Tert butyl alcohol	3.01	59	2799	2.206 ug/l	97
13) Acrolein	2.28	56	642	4.800 ug/l	91
16) Acetone	2.42	43	65284	24.638 ug/l	96
17) Carbon Disulfide	2.55	76	3199	0.217 ug/l	# 81
18) Methyl Acetate	2.75	43	7167	1.148 ug/l	# 83
20) Methylene Chloride	2.83	84	48247	8.605 ug/l	97
25) 2-Butanone	4.65	43	13493	3.585 ug/l	95
29) Tetrahydrofuran	5.10	42	3186	1.366 ug/l	# 74
36) 1,1-Dichloropropene	5.64	75	35262	4.669 ug/l	# 51
38) Carbon Tetrachloride	5.63	117	47634	5.194 ug/l	# 18
43) Isopropyl Acetate	6.42	43	156198	11.457 ug/l	98
48) Methyl methacrylate	7.85	41	249469	36.916 ug/l	# 45
49) 1,4-Dioxane	7.72	88	76	0.587 ug/l	# 22
51) 4-Methyl-2-Pentanone	8.59	43	160670	19.752 ug/l	# 47
54) cis-1,3-Dichloropropene	8.59	75	64358	6.604 ug/l	# 59
59) 2-Hexanone	9.52	43	168022	27.436 ug/l	# 52
74) N-amyl acetate	10.80	43	8534	0.579 ug/l	# 54
76) 1,2,3-Trichloropropane	11.12	75	235793	23.686 ug/l	# 35
80) 1,3,5-Trimethylbenzene	11.49	105	8928	0.315 ug/l	98
81) trans-1,4-Dichloro-2-buten	11.12	75	235793	59.683 ug/l	# 11
92) 1,2-Dibromo-3-Chloropropan	12.98	75	421	2.713 ug/l	# 9

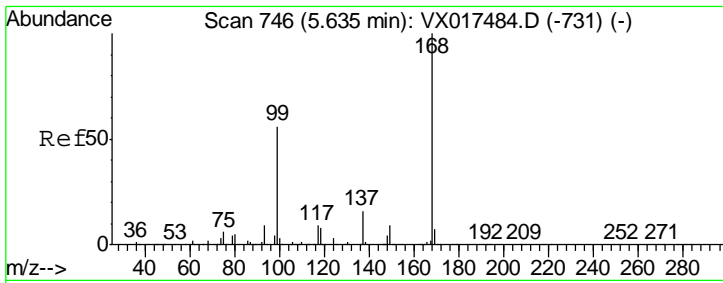
(#) = qualifier out of range (m) = manual integration (+) = signals summed

Data Path : Z:\VOASRV\HPCHEM1\MSVOA X\DATA\VX072320\
 Data File : VX017512.D
 Acq On : 23 Jul 2020 23:58
 Operator : JC/SP
 Sample : PB130403ZHE#02
 Misc : 5.0mL/MSVOA X/WATER
 ALS Vial : 37 Sample Multiplier: 1

Instrument :
 MSVOA_X
 ClientSampleId :
 PB130403ZHE#02

Quant Time: Jul 24 06:04:34 2020
 Quant Method : Z:\VOASRV\HPCHEM1\MSVOA_X\METHOD\82X072320W.M
 Quant Title : SW846 8260
 QLast Update : Fri Jul 24 05:48:09 2020
 Response via : Initial Calibration

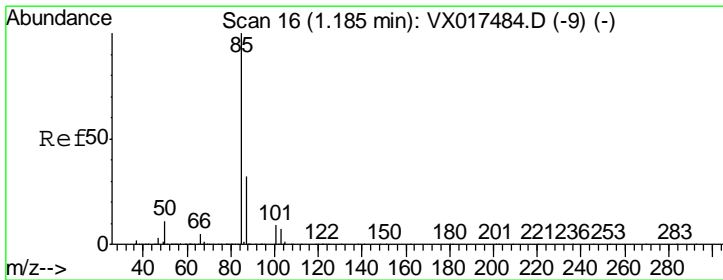
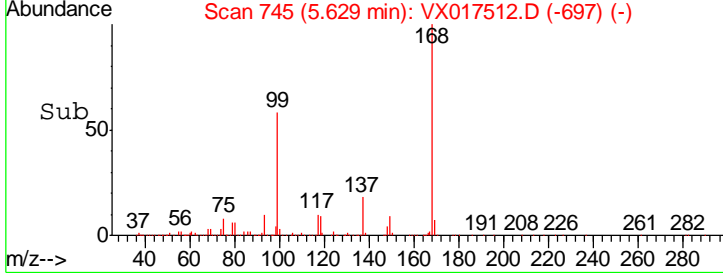
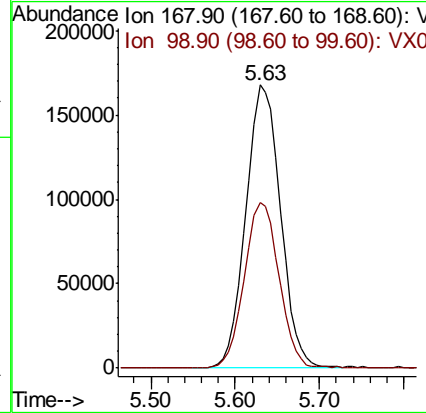
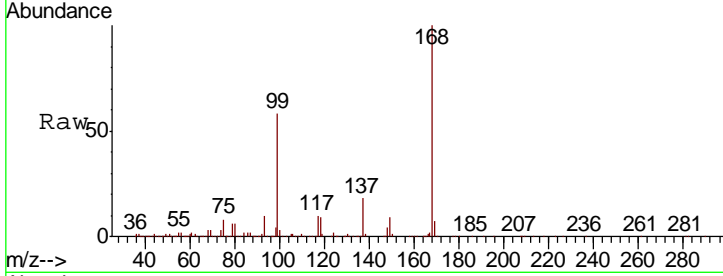




#1
 Pentafluorobenzene
 Concen: 50.000 ug/l
 RT: 5.63 min Scan# 745
 Delta R.T. -0.01 min
 Lab File: VX017512.D
 Acq: 23 Jul 2020 23:58

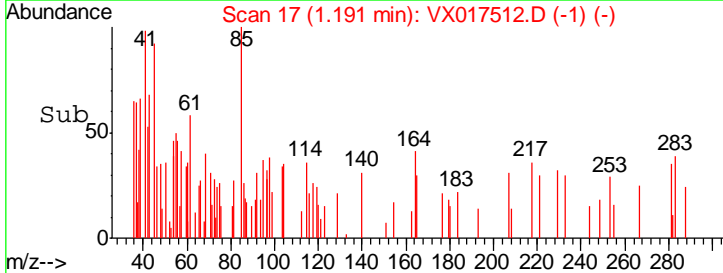
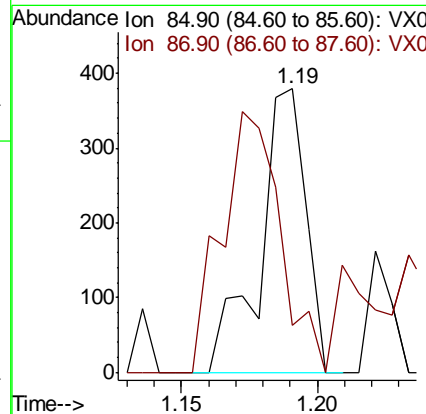
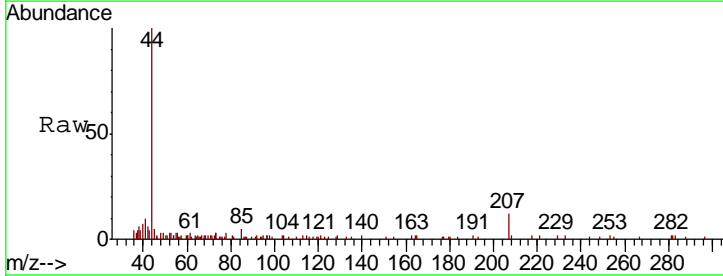
Instrument : MSVOA_X
 ClientSampleId : PB130403ZHE#02

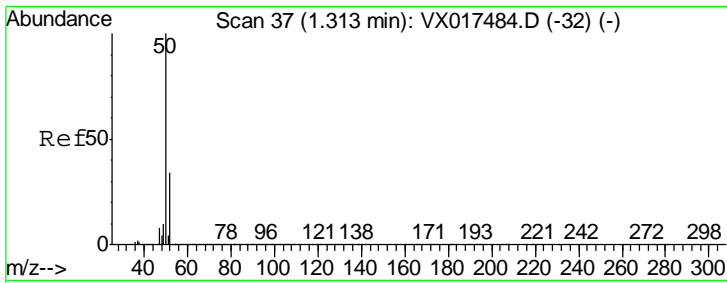
Tgt Ion	Resp	Lower	Upper
168	100		
99	58.3	43.4	65.2



#2
 Dichlorodifluoromethane
 Concen: Below Cal
 RT: 1.19 min Scan# 17
 Delta R.T. 0.01 min
 Lab File: VX017512.D
 Acq: 23 Jul 2020 23:58

Tgt Ion	Resp	Lower	Upper
85	100		
87	16.6	16.1	48.3

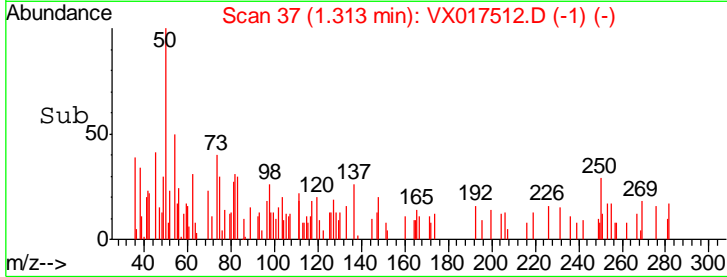
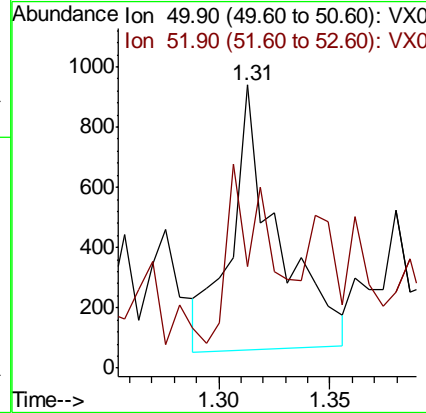
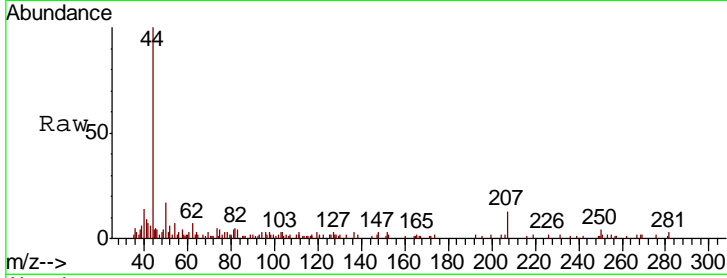




#3
 Chloromethane
 Concen: 0.586 ug/l
 RT: 1.31 min Scan# 37
 Delta R.T. 0.00 min
 Lab File: VX017512.D
 Acq: 23 Jul 2020 23:58

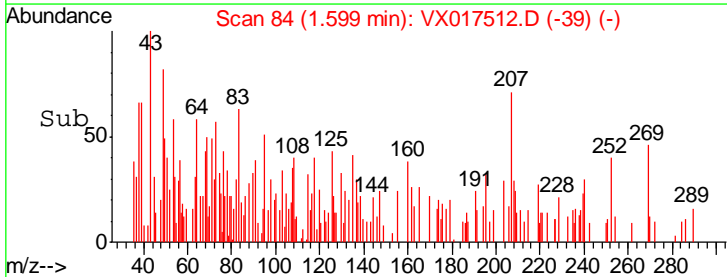
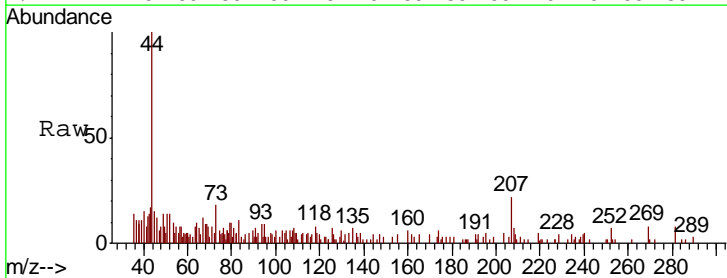
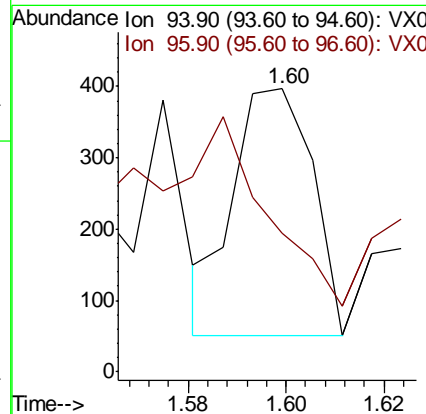
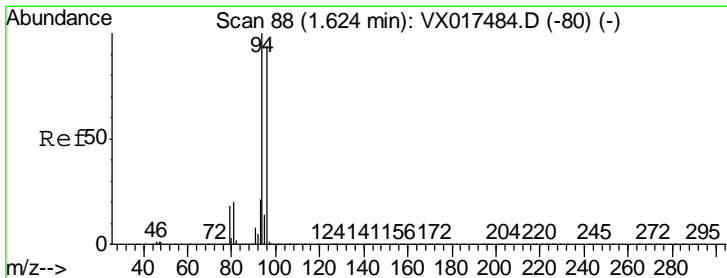
Instrument : MSVOA_X
 ClientSampled : PB130403ZHE#02

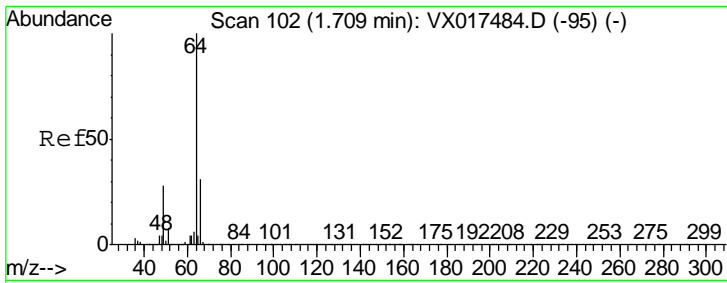
Tgt Ion	Resp	Lower	Upper
50	1277		
52	26.3	25.9	38.9



#5
 Bromomethane
 Concen: Below Cal
 RT: 1.60 min Scan# 84
 Delta R.T. -0.02 min
 Lab File: VX017512.D
 Acq: 23 Jul 2020 23:58

Tgt Ion	Resp	Lower	Upper
94	386		
96	29.8	74.1	111.1#

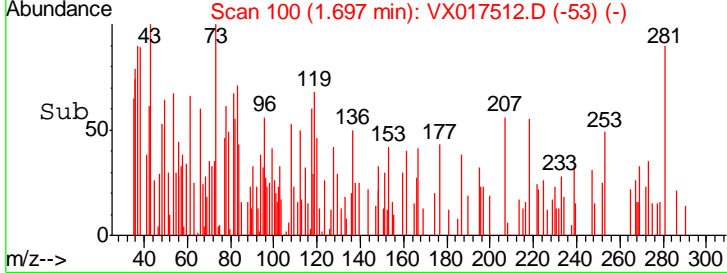
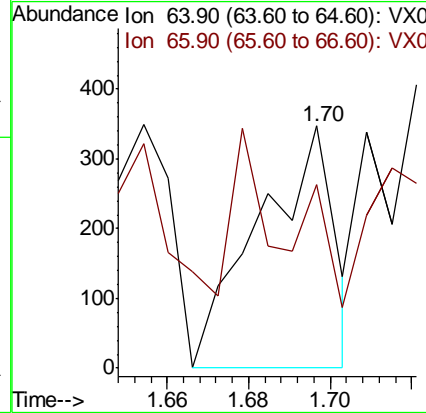
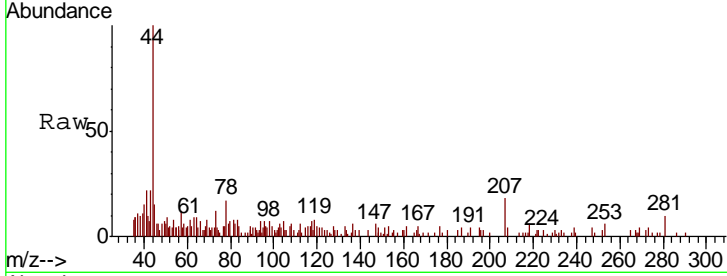




#6
 Chloroethane
 Concen: Below Cal
 RT: 1.70 min Scan# 100
 Delta R.T. -0.01 min
 Lab File: VX017512.D
 Acq: 23 Jul 2020 23:58

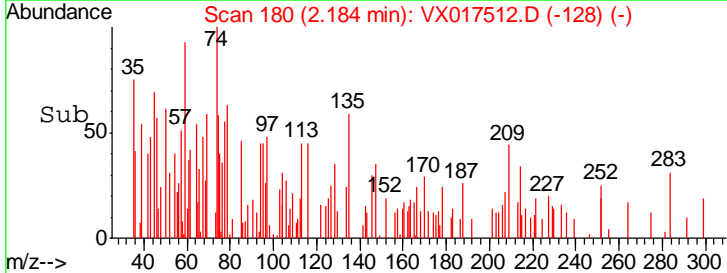
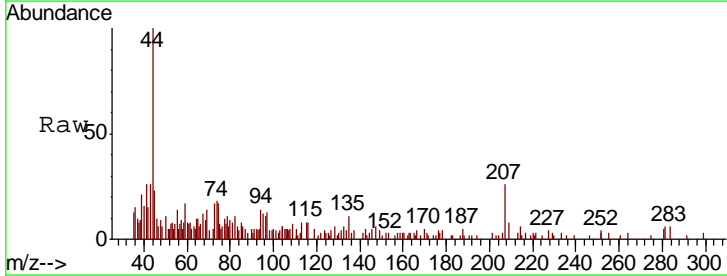
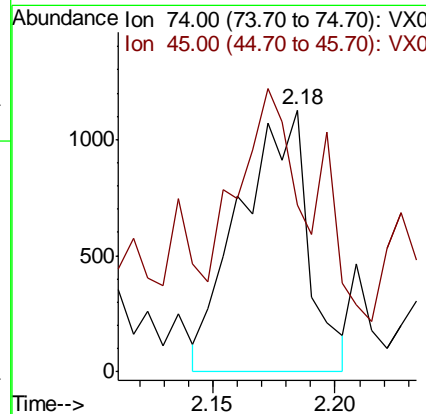
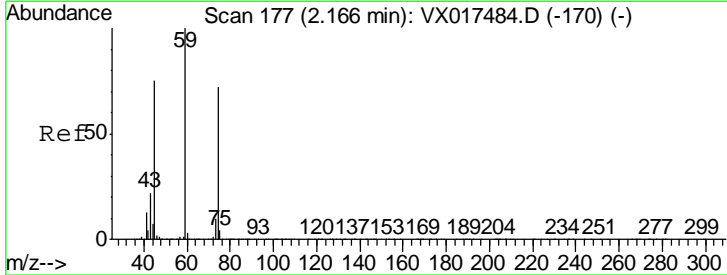
Instrument : MSVOA_X
 ClientSampled : PB130403ZHE#02

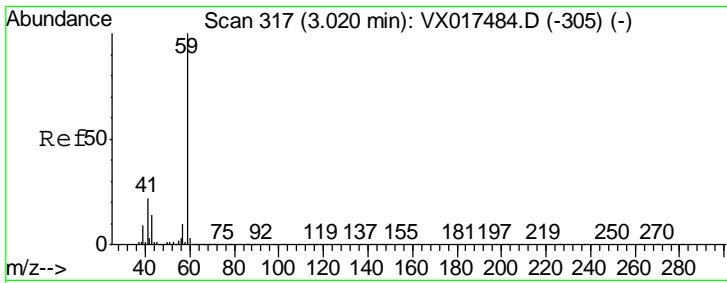
Tgt Ion	Resp	Lower	Upper
64	100		
66	64.4	24.9	37.3#



#8
 Diethyl Ether
 Concen: Below Cal
 RT: 2.18 min Scan# 180
 Delta R.T. 0.02 min
 Lab File: VX017512.D
 Acq: 23 Jul 2020 23:58

Tgt Ion	Resp	Lower	Upper
74	100		
45	93.5	50.8	152.5

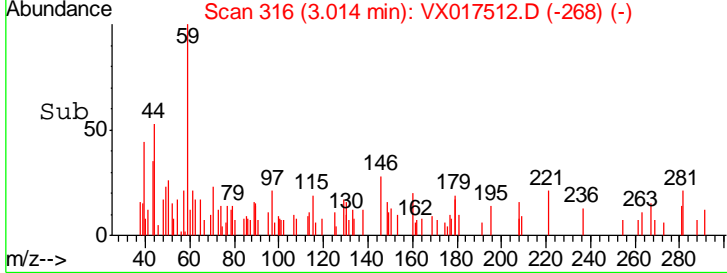
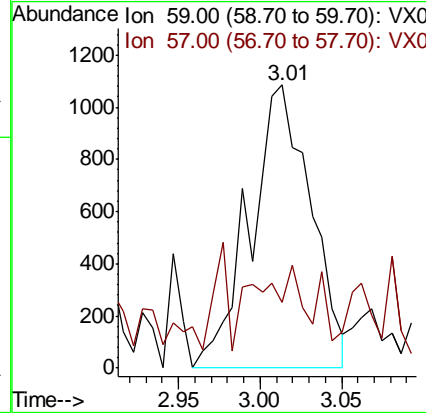
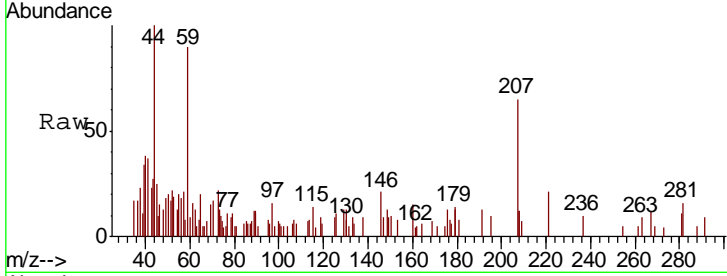




#11
 Tert butyl alcohol
 Concen: 2.206 ug/l
 RT: 3.01 min Scan# 316
 Delta R.T. -0.01 min
 Lab File: VX017512.D
 Acq: 23 Jul 2020 23:58

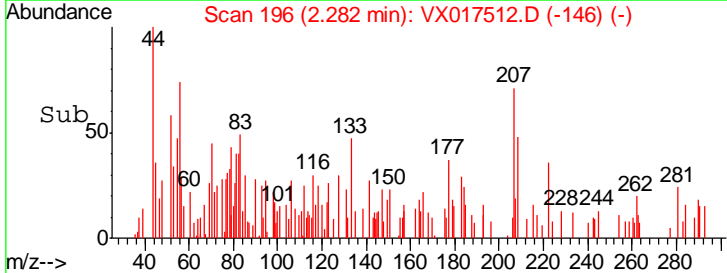
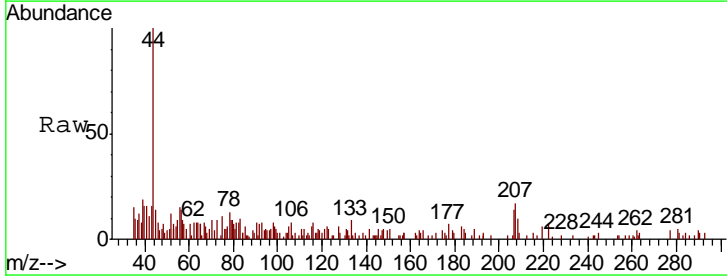
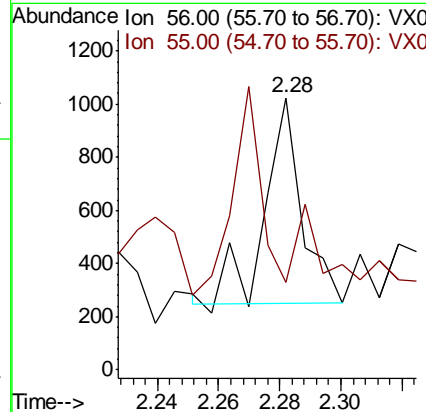
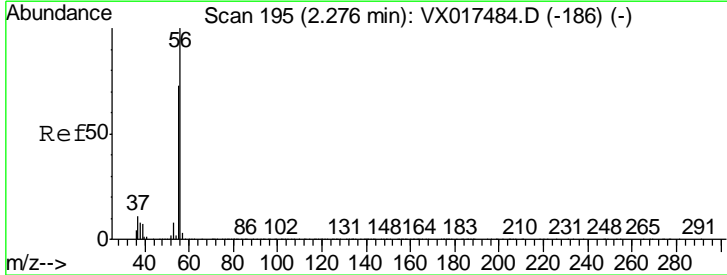
Instrument : MSVOA_X
 ClientSampled : PB130403ZHE#02

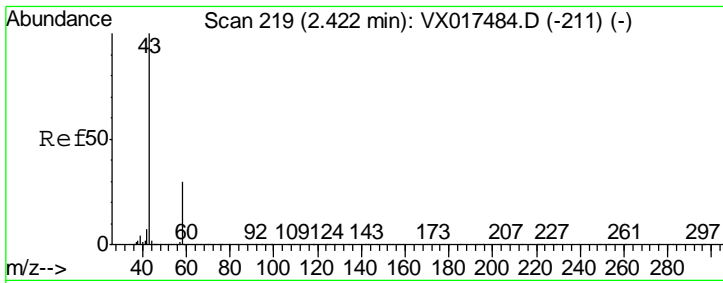
Tgt Ion: 59 Resp: 2799
 Ion Ratio Lower Upper
 59 100
 57 9.5 8.6 12.8



#13
 Acrolein
 Concen: 4.800 ug/l
 RT: 2.28 min Scan# 196
 Delta R.T. 0.01 min
 Lab File: VX017512.D
 Acq: 23 Jul 2020 23:58

Tgt Ion: 56 Resp: 642
 Ion Ratio Lower Upper
 56 100
 55 79.4 57.4 86.2

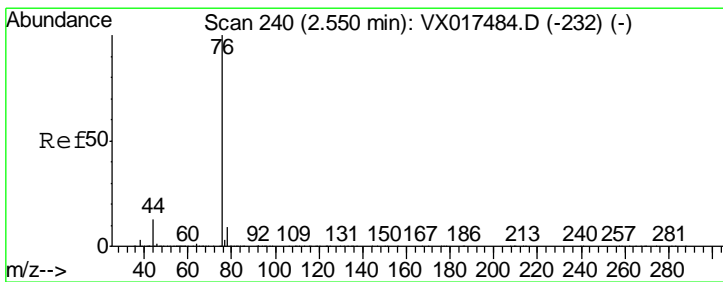
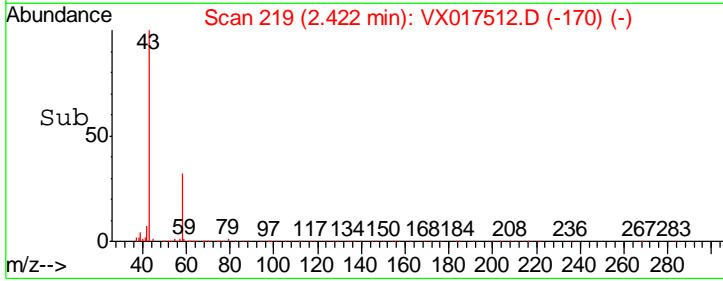
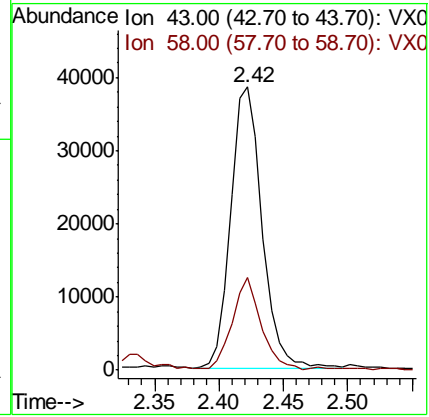
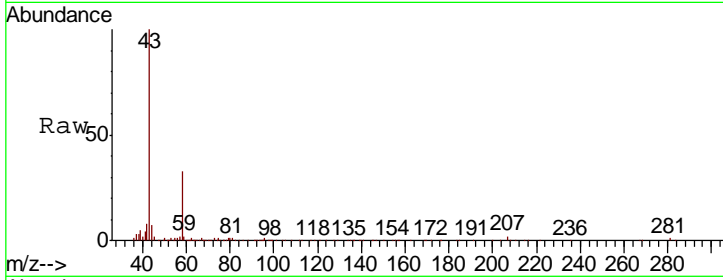




#16
 Acetone
 Concen: 24.638 ug/l
 RT: 2.42 min Scan# 219
 Delta R.T. -0.00 min
 Lab File: VX017512.D
 Acq: 23 Jul 2020 23:58

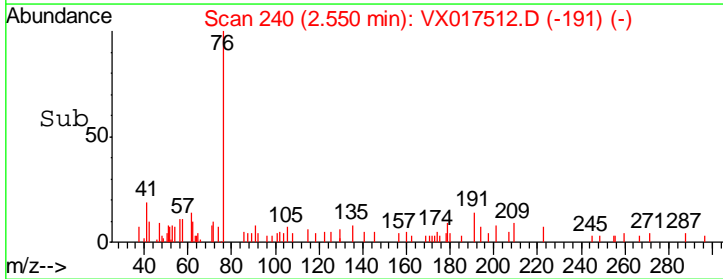
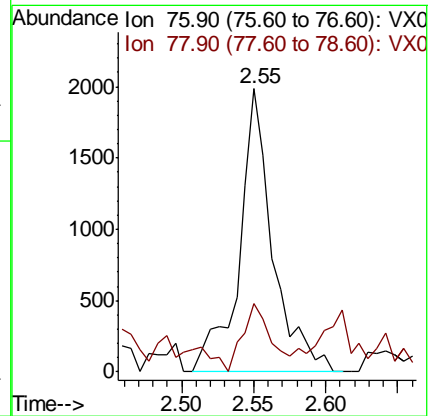
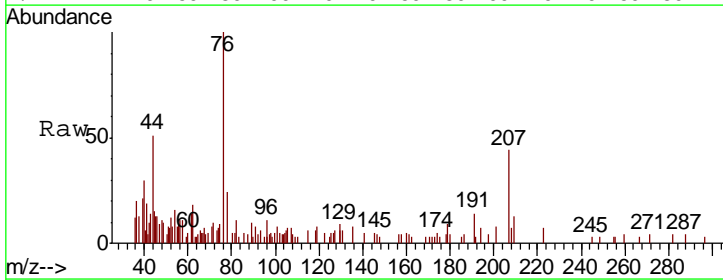
Instrument : MSVOA_X
 ClientSampled : PB130403ZHE#02

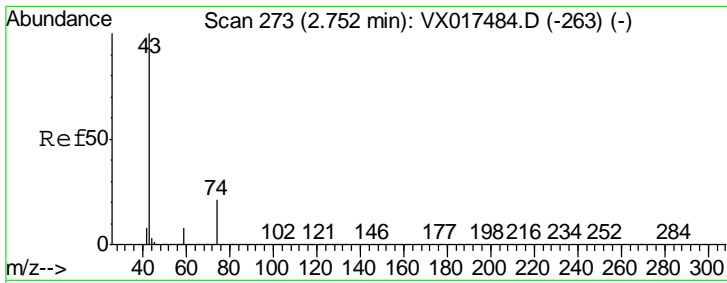
Tgt Ion	Resp	Lower	Upper
43	100		
58	32.3	24.2	36.4



#17
 Carbon Disulfide
 Concen: 0.217 ug/l
 RT: 2.55 min Scan# 240
 Delta R.T. -0.00 min
 Lab File: VX017512.D
 Acq: 23 Jul 2020 23:58

Tgt Ion	Resp	Lower	Upper
76	100		
78	16.4	7.5	11.3#

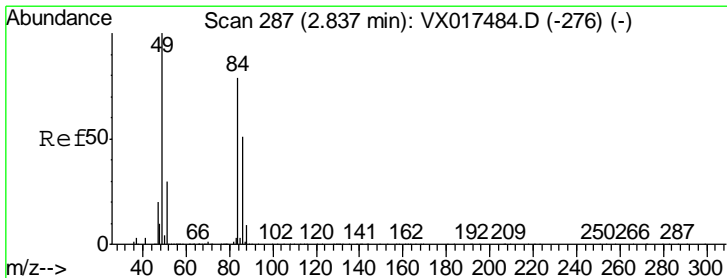
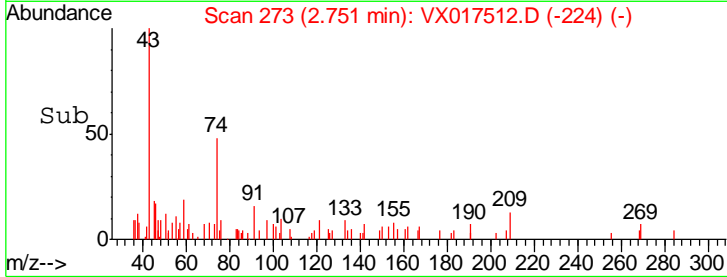
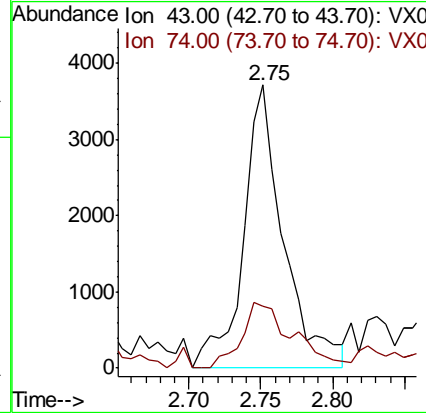
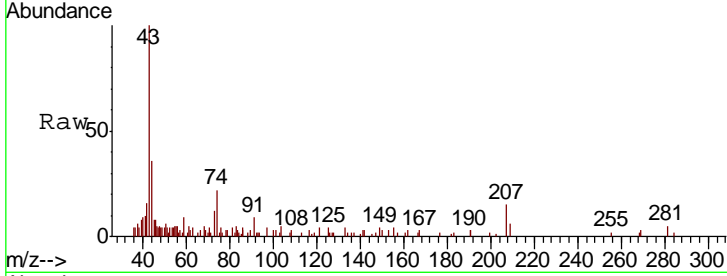




#18
Methyl Acetate
Concen: 1.148 ug/l
RT: 2.75 min Scan# 273
Delta R.T. -0.00 min
Lab File: VX017512.D
Acq: 23 Jul 2020 23:58

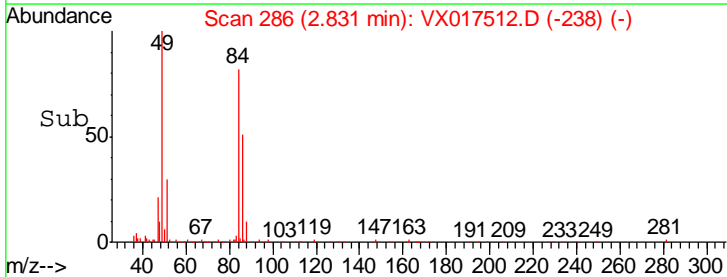
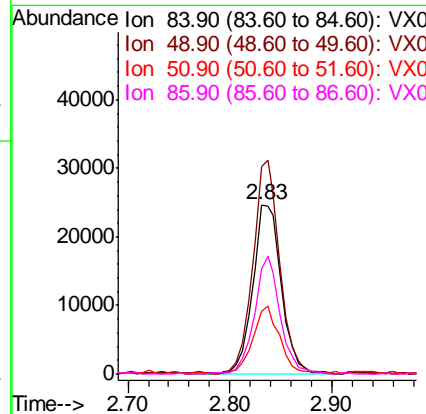
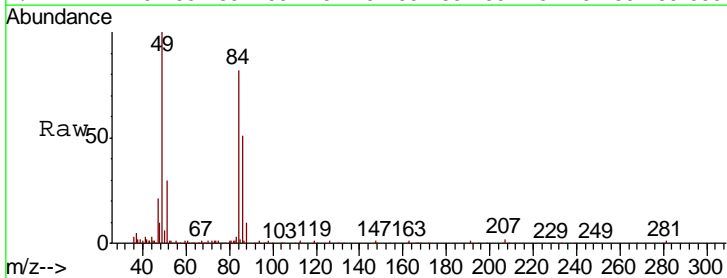
Instrument :
MSVOA_X
ClientSampleId :
PB130403ZHE#02

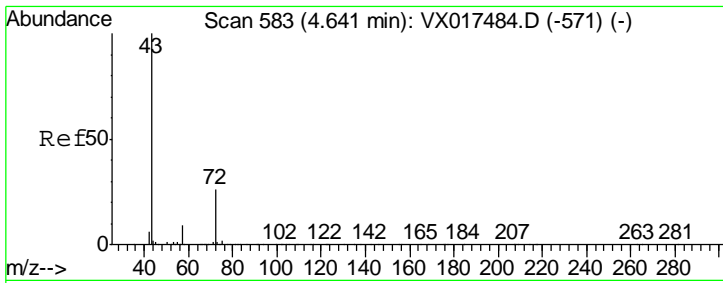
Tgt Ion	Resp	Lower	Upper
43	100		
74	29.9	17.5	26.3#



#20
Methylene Chloride
Concen: 8.605 ug/l
RT: 2.83 min Scan# 286
Delta R.T. -0.01 min
Lab File: VX017512.D
Acq: 23 Jul 2020 23:58

Tgt Ion	Resp	Lower	Upper
84	100		
49	121.9	100.3	150.5
51	37.0	30.5	45.7
86	61.7	51.1	76.7

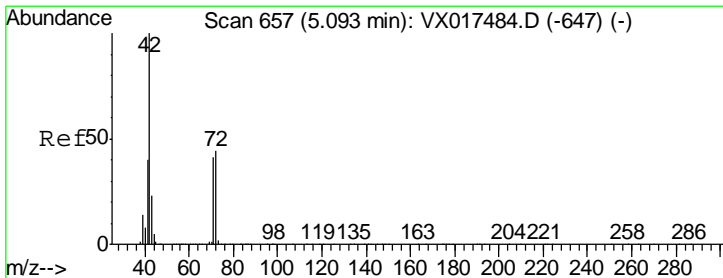
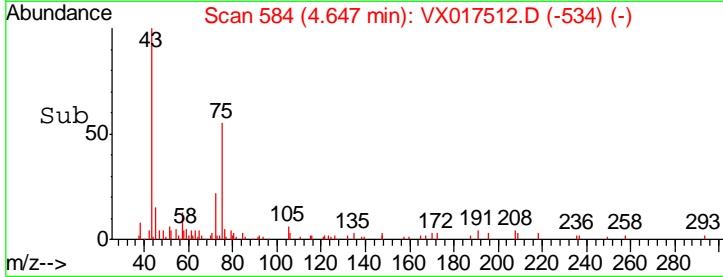
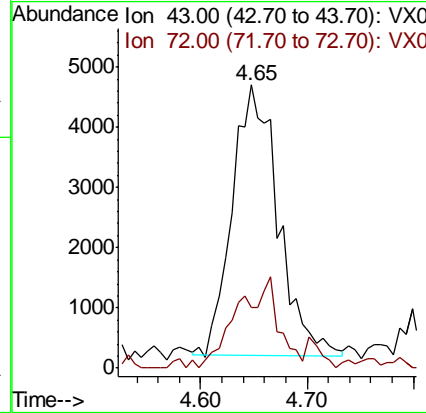
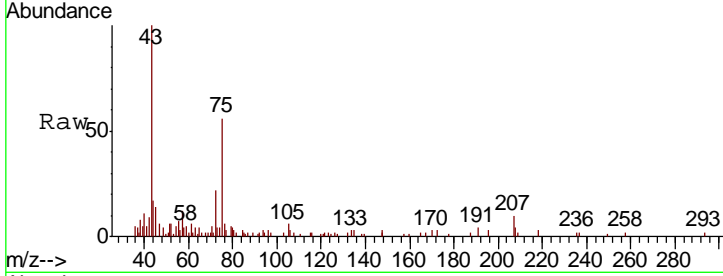




#25
 2-Butanone
 Concen: 3.585 ug/l
 RT: 4.65 min Scan# 584
 Delta R.T. 0.01 min
 Lab File: VX017512.D
 Acq: 23 Jul 2020 23:58

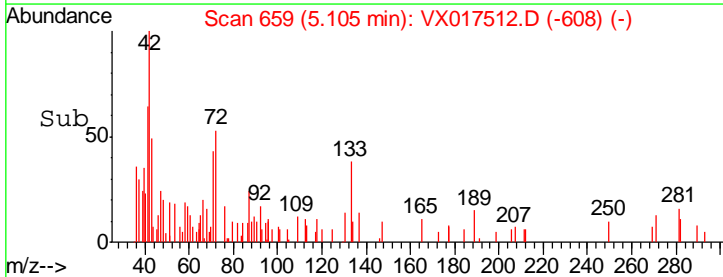
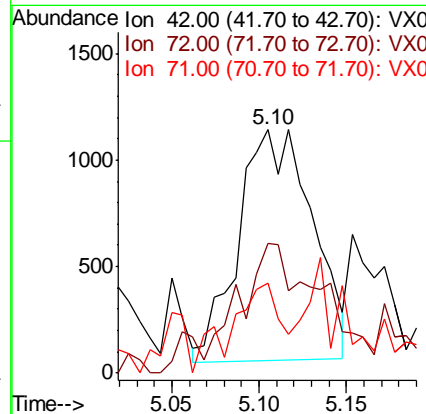
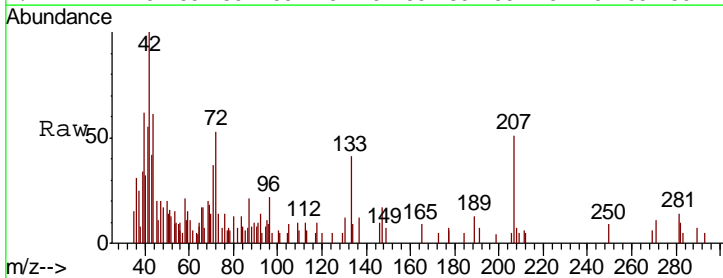
Instrument :
 MSVOA_X
 ClientSampled :
 PB130403ZHE#02

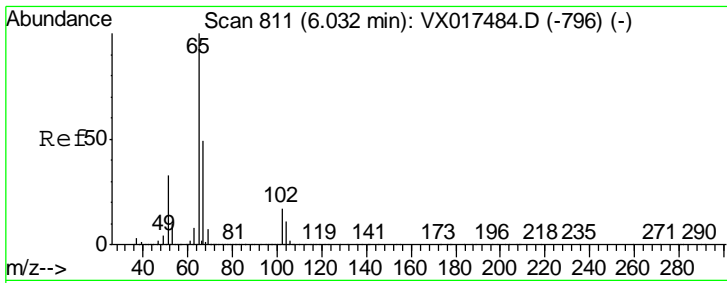
Tgt Ion	Resp	Lower	Upper
43	13493		
72	21.0	19.0	28.4



#29
 Tetrahydrofuran
 Concen: 1.366 ug/l
 RT: 5.10 min Scan# 659
 Delta R.T. 0.01 min
 Lab File: VX017512.D
 Acq: 23 Jul 2020 23:58

Tgt Ion	Resp	Lower	Upper
42	3186		
72	62.3	35.5	53.3#
71	26.5	33.0	49.4#

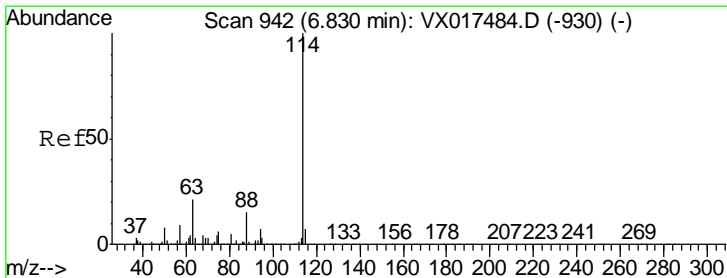
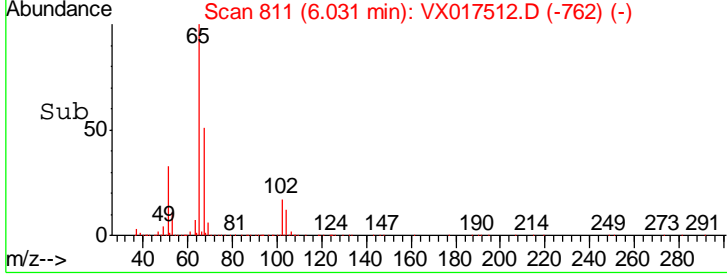
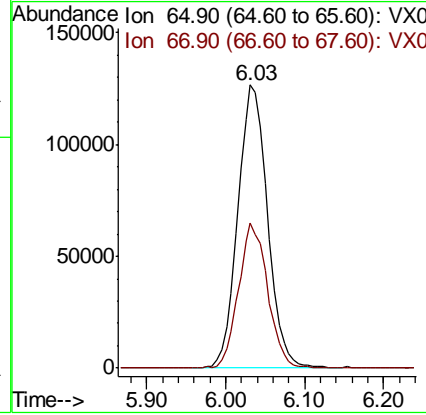
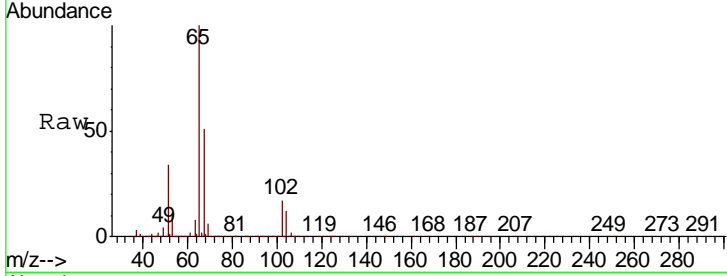




#33
 1,2-Dichloroethane-d4
 Concen: 55.112 ug/l
 RT: 6.03 min Scan# 811
 Delta R.T. -0.00 min
 Lab File: VX017512.D
 Acq: 23 Jul 2020 23:58

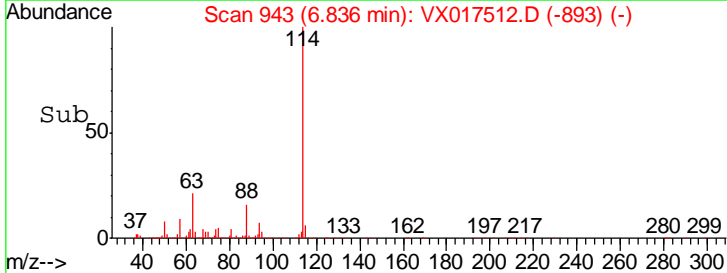
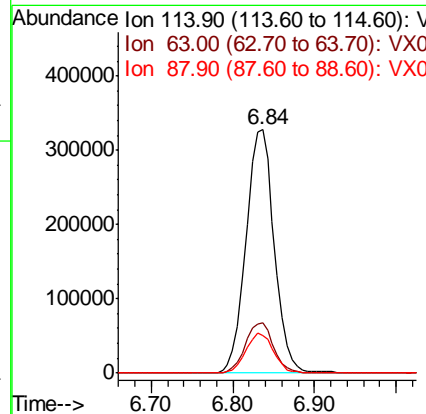
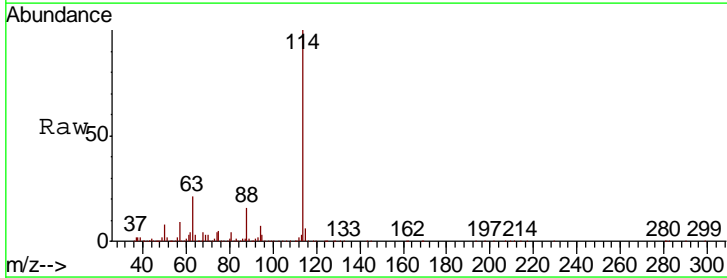
Instrument : MSVOA_X
 ClientSampleId : PB130403ZHE#02

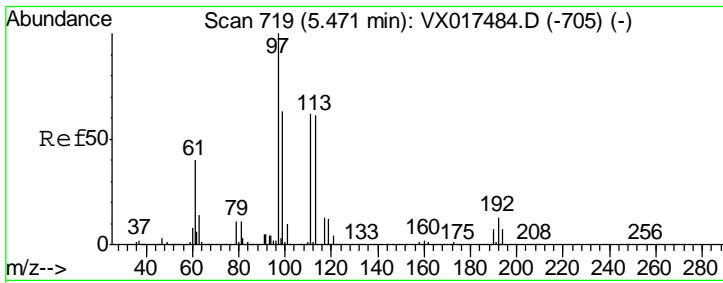
Tgt Ion	Resp	Lower	Upper
65	331784		
67	50.4	0.0	102.8



#34
 1,4-Difluorobenzene
 Concen: 50.000 ug/l
 RT: 6.84 min Scan# 943
 Delta R.T. 0.01 min
 Lab File: VX017512.D
 Acq: 23 Jul 2020 23:58

Tgt Ion	Resp	Lower	Upper
114	787384		
63	20.8	0.0	40.6
88	15.6	0.0	33.4

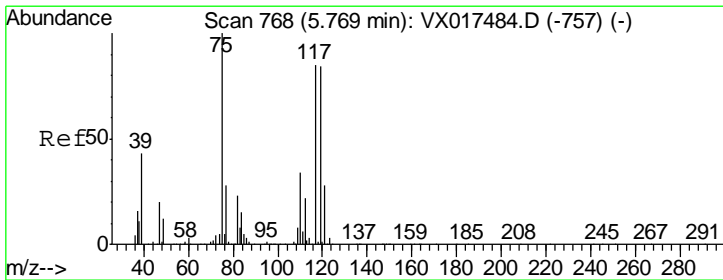
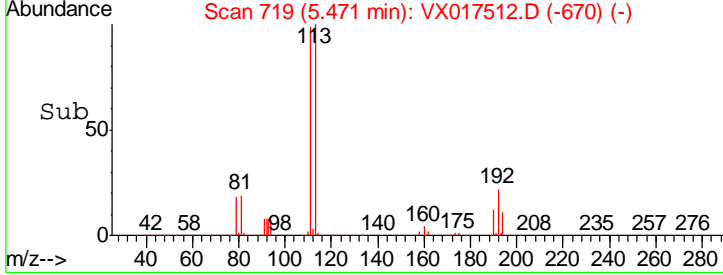
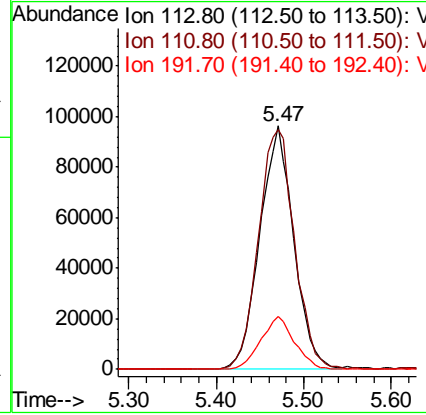
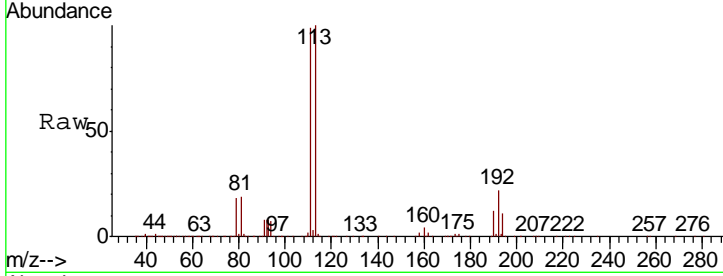




#35
 Dibromofluoromethane
 Concen: 49.365 ug/l
 RT: 5.47 min Scan# 719
 Delta R.T. -0.00 min
 Lab File: VX017512.D
 Acq: 23 Jul 2020 23:58

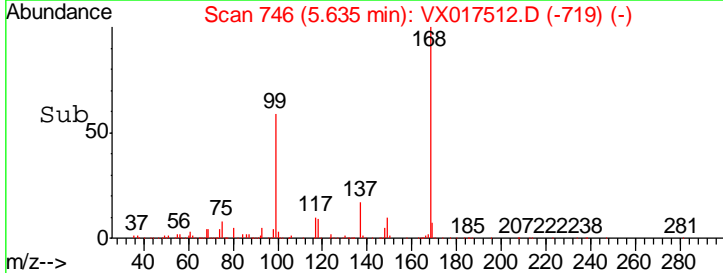
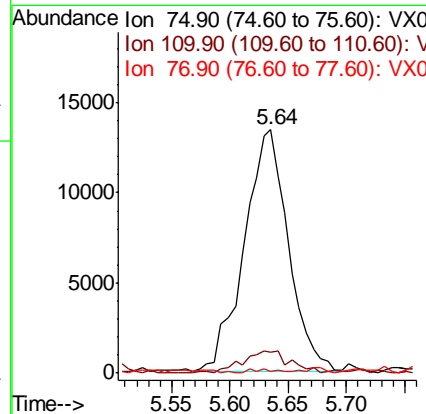
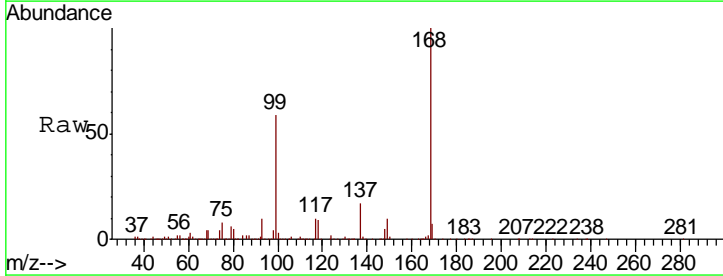
Instrument :
 MSVOA_X
 ClientSampleId :
 PB130403ZHE#02

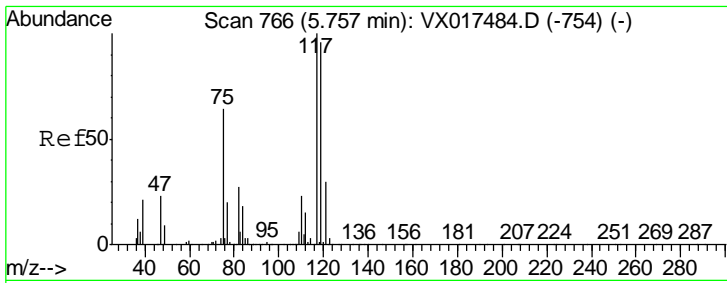
Tgt Ion	Resp	Lower	Upper
113	259957		
111	104.8	80.7	121.1
192	21.7	16.9	25.3



#36
 1,1-Dichloropropene
 Concen: 4.669 ug/l
 RT: 5.64 min Scan# 746
 Delta R.T. -0.13 min
 Lab File: VX017512.D
 Acq: 23 Jul 2020 23:58

Tgt Ion	Resp	Lower	Upper
75	35262		
110	10.1	18.1	54.3#
77	1.0	24.6	37.0#

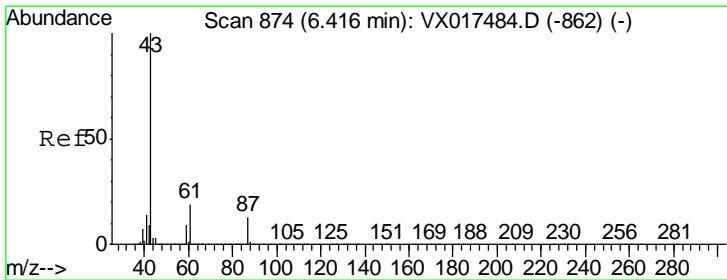
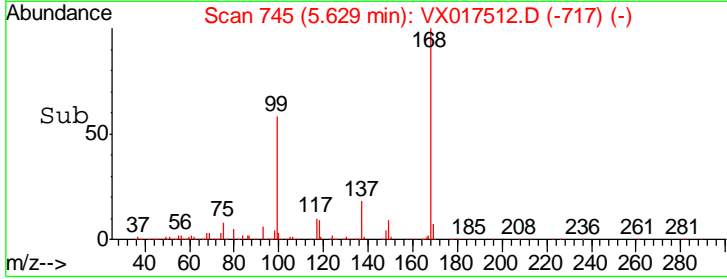
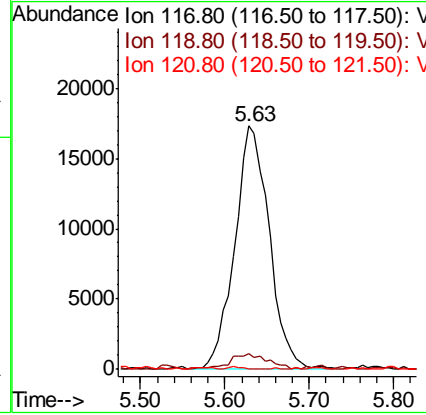
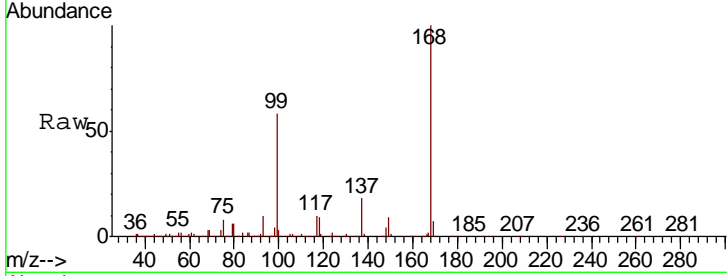




#38
 Carbon Tetrachloride
 Concen: 5.194 ug/l
 RT: 5.63 min Scan# 745
 Delta R.T. -0.13 min
 Lab File: VX017512.D
 Acq: 23 Jul 2020 23:58

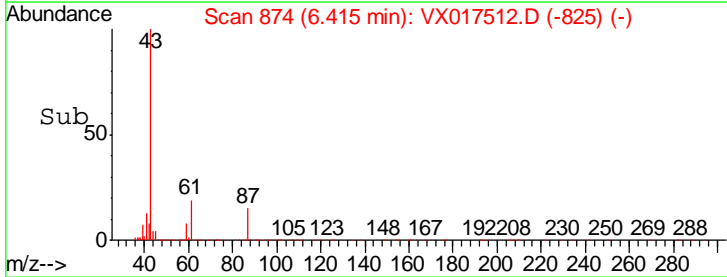
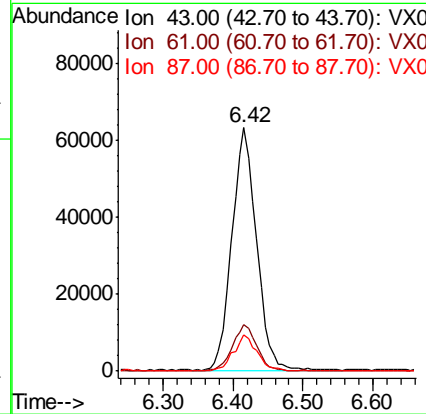
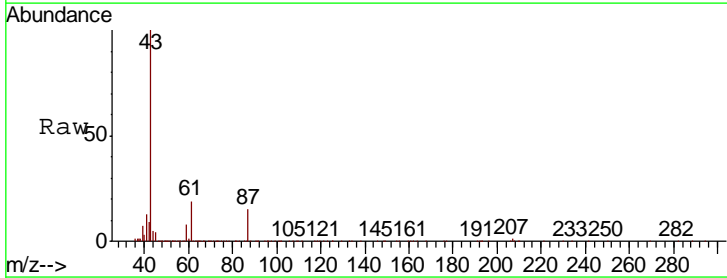
Instrument : MSVOA_X
 ClientSampleId : PB130403ZHE#02

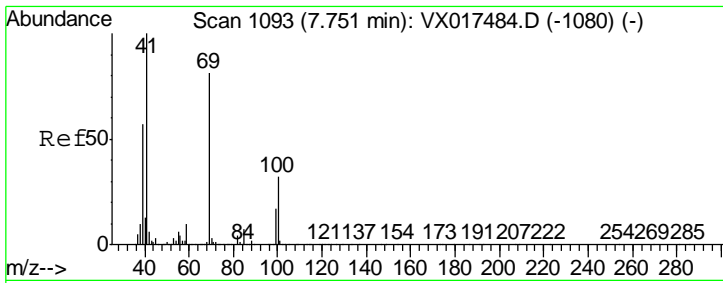
Tgt Ion	Resp	Lower	Upper
117	47634		
119	6.4	75.4	113.0#
121	0.0	24.3	36.5#



#43
 Isopropyl Acetate
 Concen: 11.457 ug/l
 RT: 6.42 min Scan# 874
 Delta R.T. -0.00 min
 Lab File: VX017512.D
 Acq: 23 Jul 2020 23:58

Tgt Ion	Resp	Lower	Upper
43	156198		
61	18.9	15.5	23.3
87	14.1	10.5	15.7

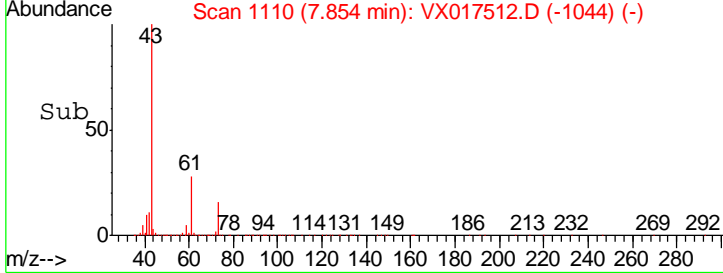
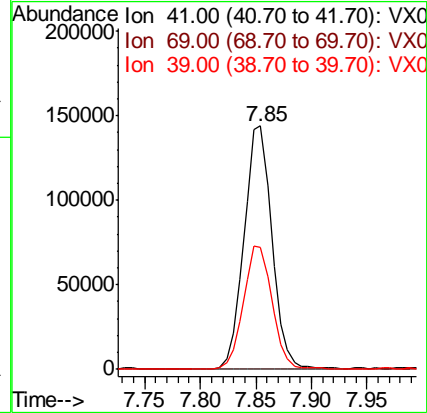
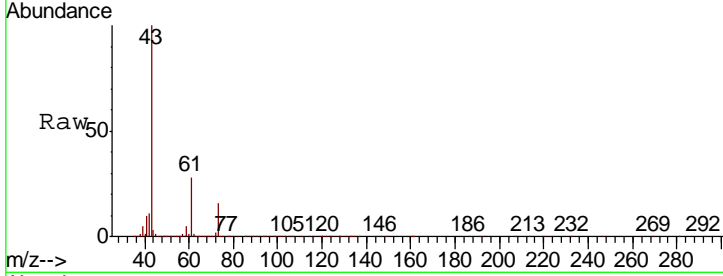




#48
 Methyl methacrylate
 Concen: 36.916 ug/l
 RT: 7.85 min Scan# 1110
 Delta R.T. 0.10 min
 Lab File: VX017512.D
 Acq: 23 Jul 2020 23:58

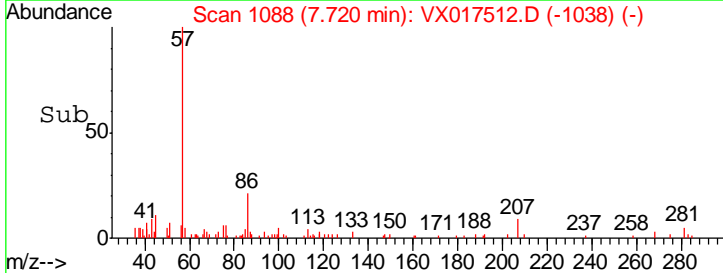
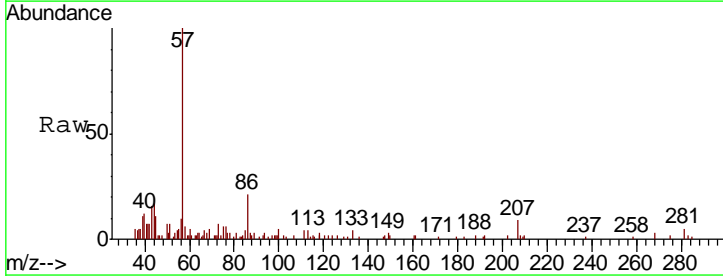
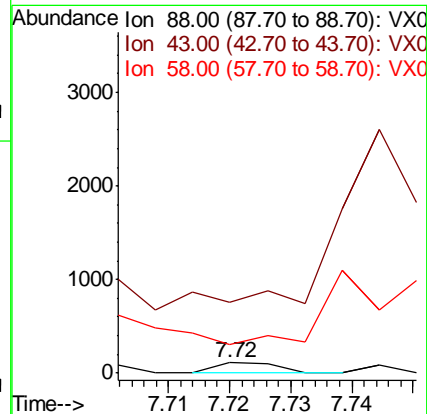
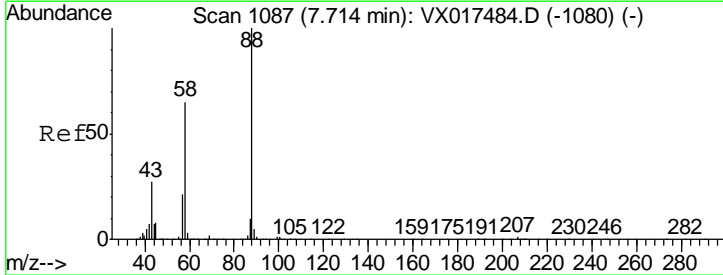
Instrument :
 MSVOA_X
ClientSampled :
 PB130403ZHE#02

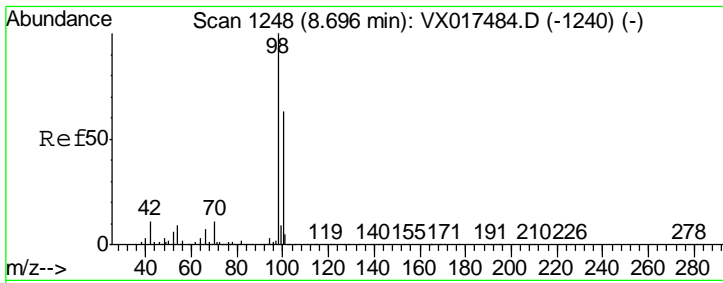
Tgt Ion	Resp	Lower	Upper
41	100		
69	0.3	63.1	94.7#
39	52.3	45.1	67.7



#49
 1,4-Dioxane
 Concen: 0.587 ug/l
 RT: 7.72 min Scan# 1088
 Delta R.T. 0.01 min
 Lab File: VX017512.D
 Acq: 23 Jul 2020 23:58

Tgt Ion	Resp	Lower	Upper
88	100		
43	0.0	27.8	41.6#
58	0.0	58.3	87.5#

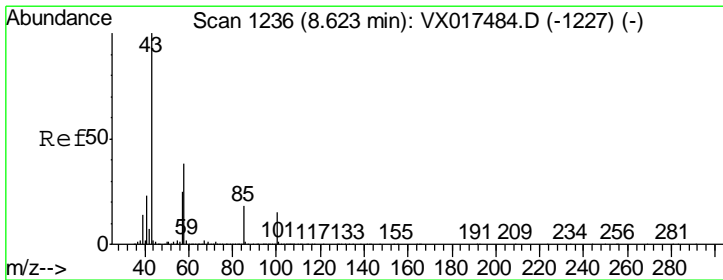
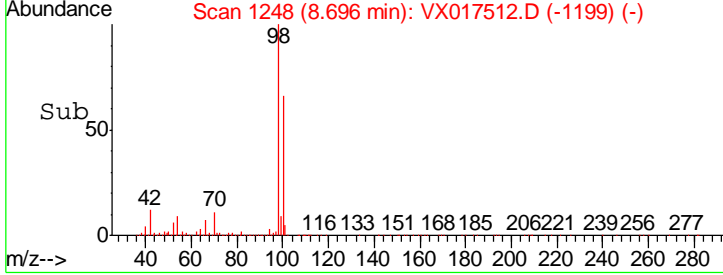
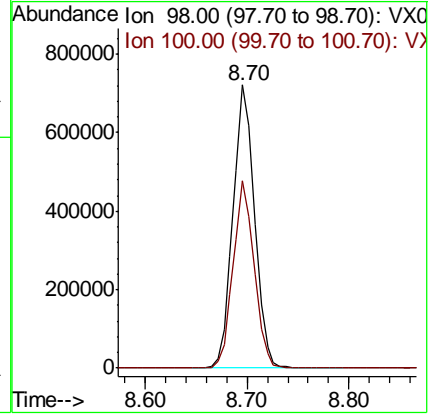
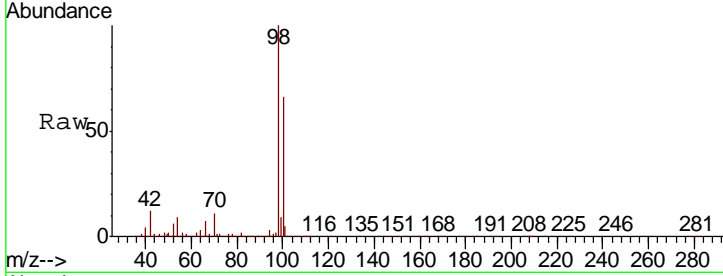




#50
 Toluene-d8
 Concen: 55.336 ug/l
 RT: 8.70 min Scan# 1248
 Delta R.T. -0.00 min
 Lab File: VX017512.D
 Acq: 23 Jul 2020 23:58

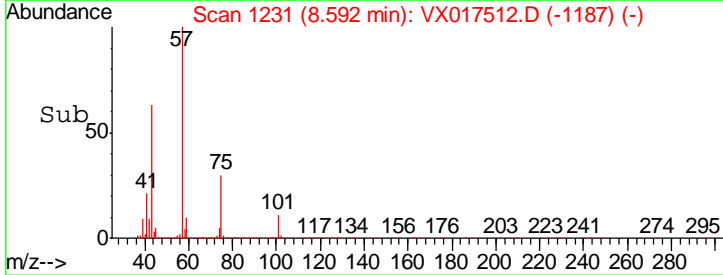
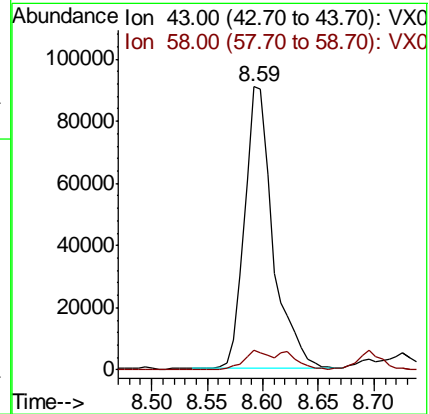
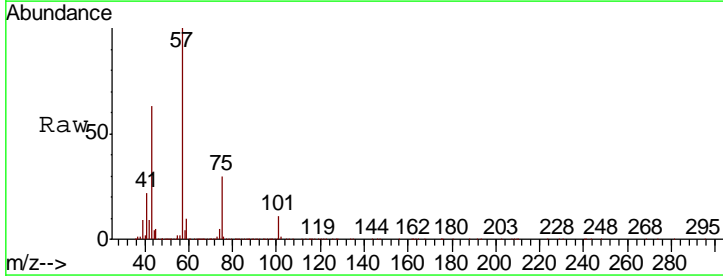
Instrument : MSVOA_X
 ClientSampled : PB130403ZHE#02

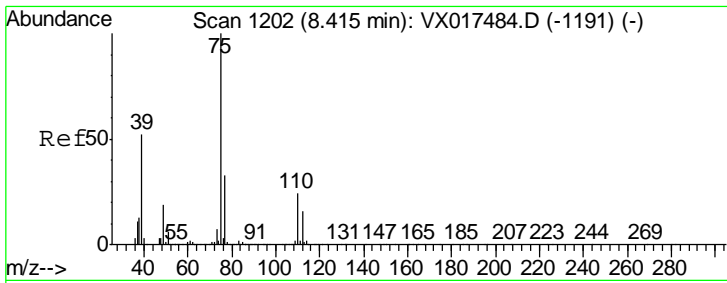
Tgt Ion	Resp	Lower	Upper
98	1051222		
100	64.5	52.3	78.5



#51
 4-Methyl-2-Pentanone
 Concen: 19.752 ug/l
 RT: 8.59 min Scan# 1231
 Delta R.T. -0.03 min
 Lab File: VX017512.D
 Acq: 23 Jul 2020 23:58

Tgt Ion	Resp	Lower	Upper
43	160670		
58	6.6	31.0	46.4#

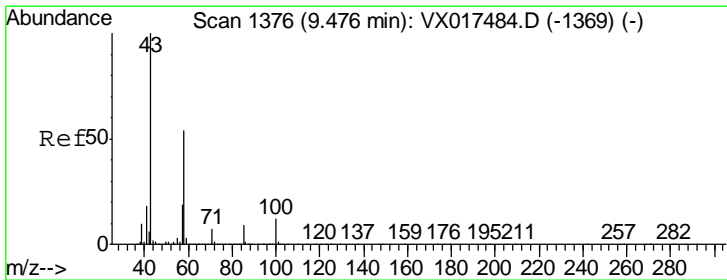
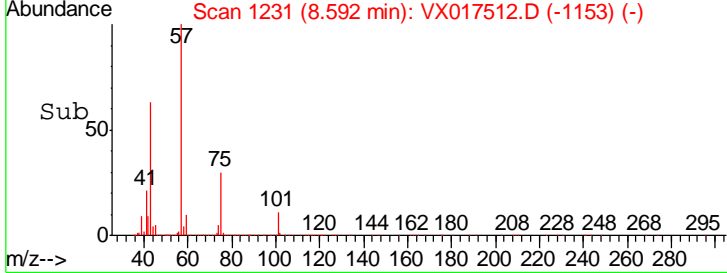
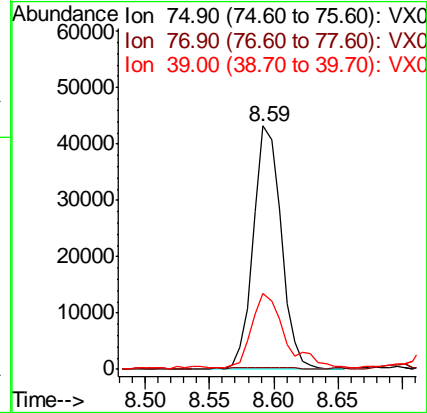
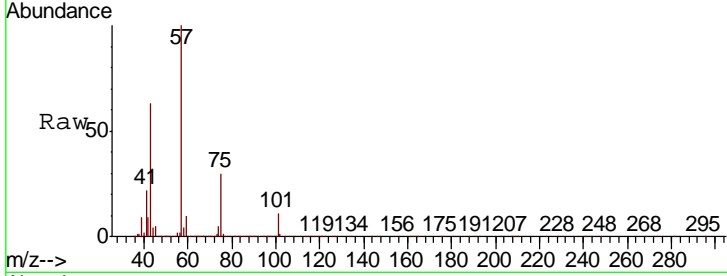




#54
 cis-1,3-Dichloropropene
 Concen: 6.604 ug/l
 RT: 8.59 min Scan# 1231
 Delta R.T. 0.18 min
 Lab File: VX017512.D
 Acq: 23 Jul 2020 23:58

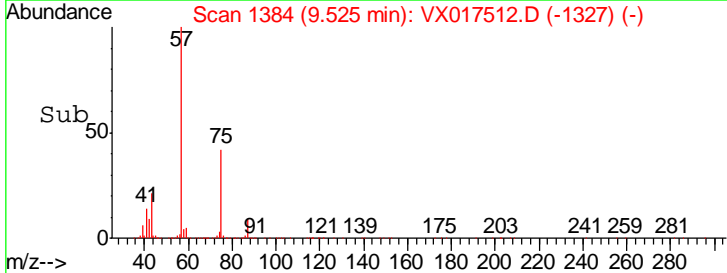
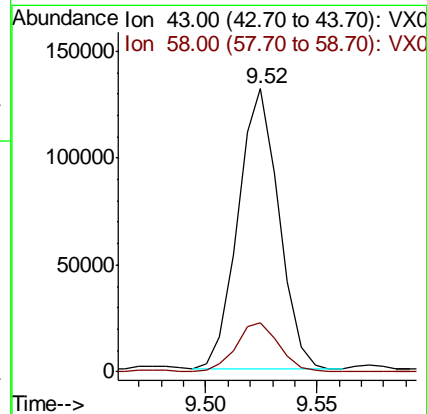
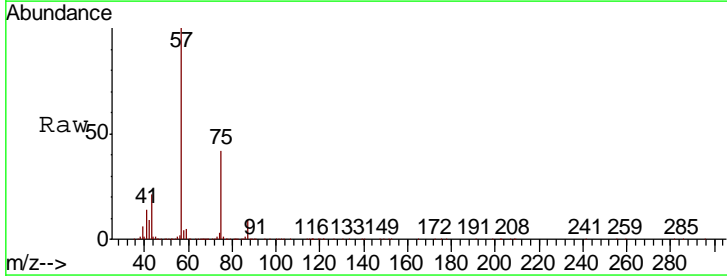
Instrument : MSVOA_X
 ClientSampleId : PB130403ZHE#02

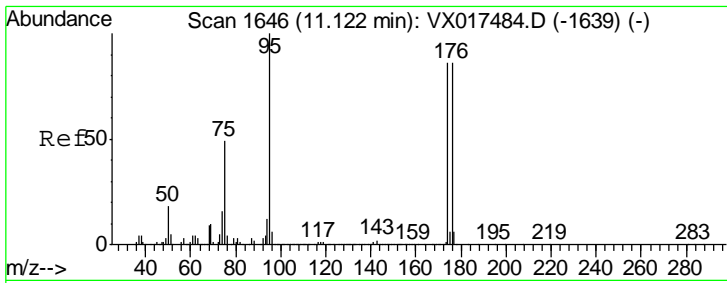
Tgt Ion	Resp	Lower	Upper
75	64358		
77	0.4	25.5	38.3#
39	30.0	41.8	62.8#



#59
 2-Hexanone
 Concen: 27.436 ug/l
 RT: 9.52 min Scan# 1384
 Delta R.T. 0.05 min
 Lab File: VX017512.D
 Acq: 23 Jul 2020 23:58

Tgt Ion	Resp	Lower	Upper
43	168022		
58	18.8	26.6	79.8#

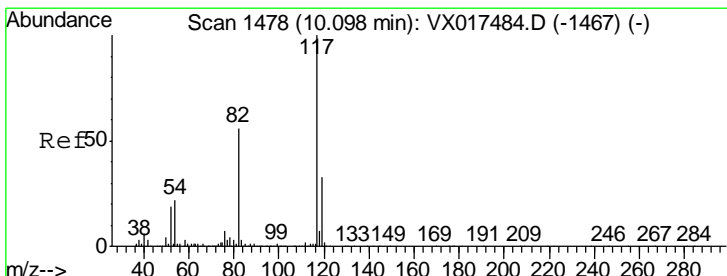
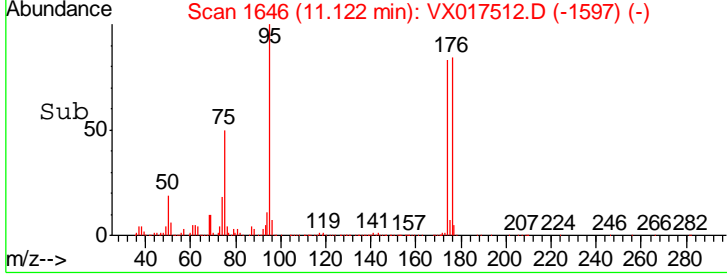
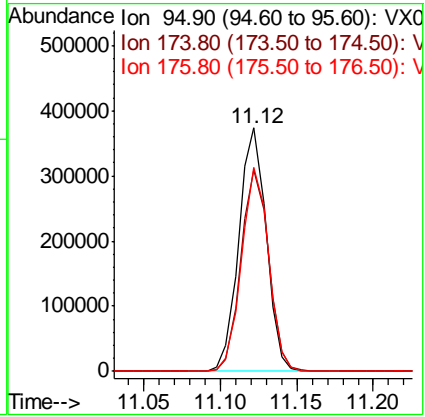
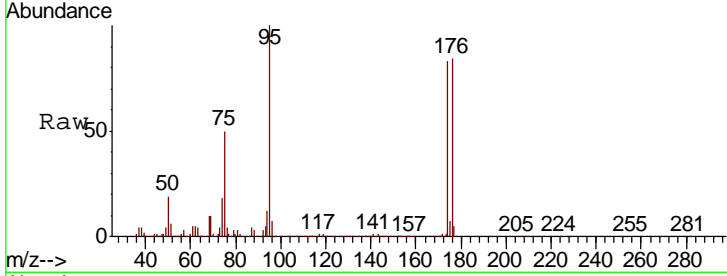




#62
 4-Bromofluorobenzene
 Concen: 61.161 ug/l
 RT: 11.12 min Scan# 1646
 Delta R.T. -0.00 min
 Lab File: VX017512.D
 Acq: 23 Jul 2020 23:58

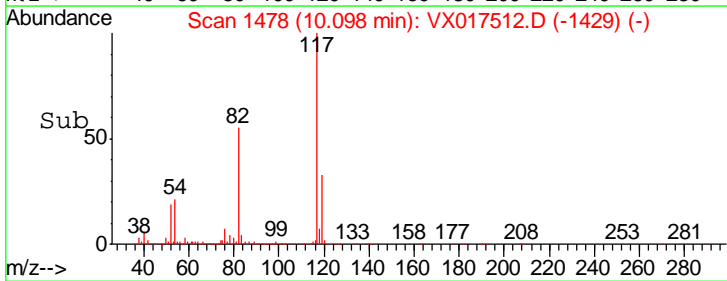
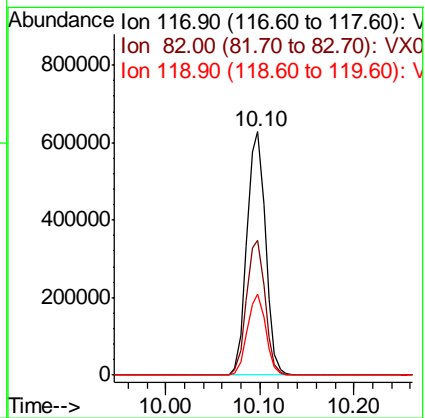
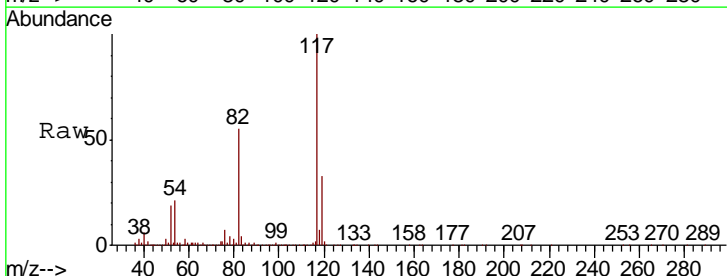
Instrument : MSVOA_X
 ClientSampled : PB130403ZHE#02

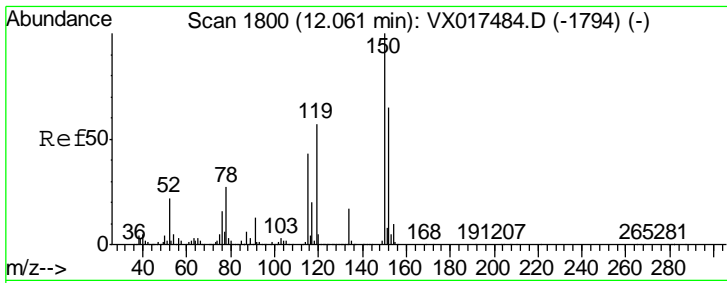
Tgt Ion	Resp	Lower	Upper
95	100		
174	83.9	0.0	169.0
176	82.7	0.0	161.0



#63
 Chlorobenzene-d5
 Concen: 50.000 ug/l
 RT: 10.10 min Scan# 1478
 Delta R.T. -0.00 min
 Lab File: VX017512.D
 Acq: 23 Jul 2020 23:58

Tgt Ion	Resp	Lower	Upper
117	100		
82	55.3	44.0	66.0
119	33.2	25.4	38.0

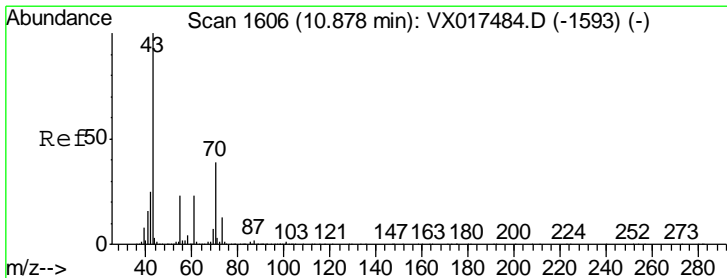
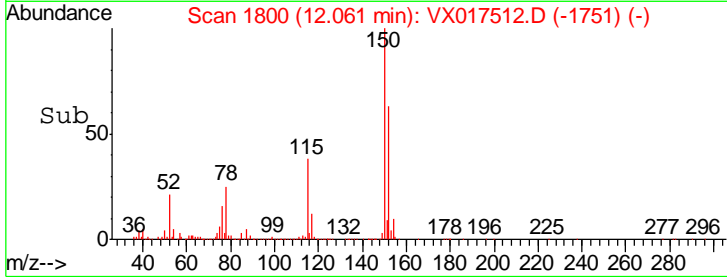
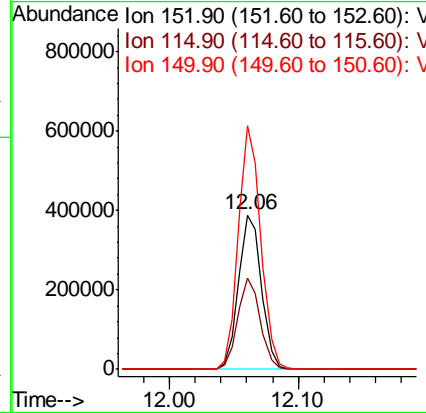
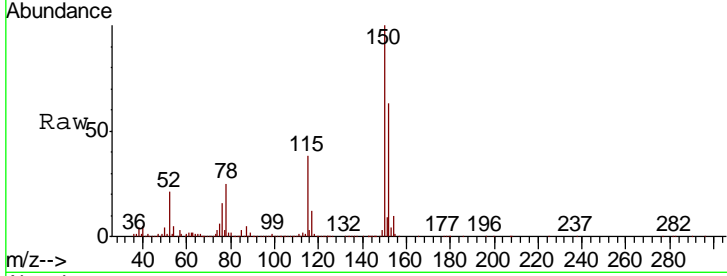




#72
 1,4-Dichlorobenzene-d4
 Concen: 50.000 ug/l
 RT: 12.06 min Scan# 1800
 Delta R.T. -0.00 min
 Lab File: VX017512.D
 Acq: 23 Jul 2020 23:58

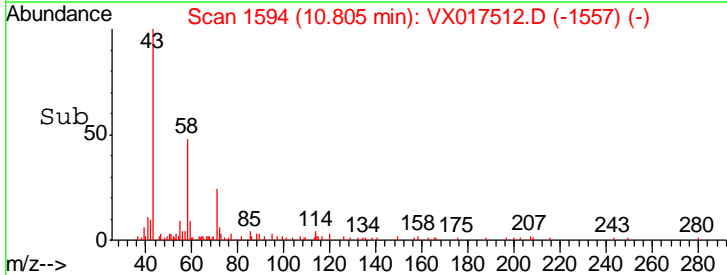
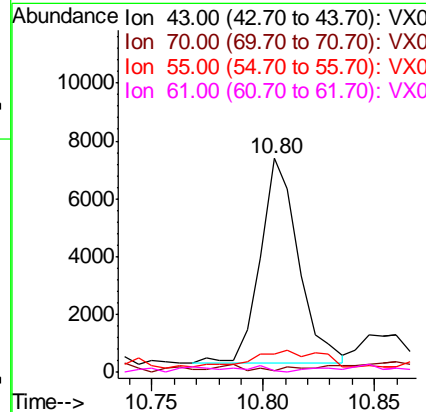
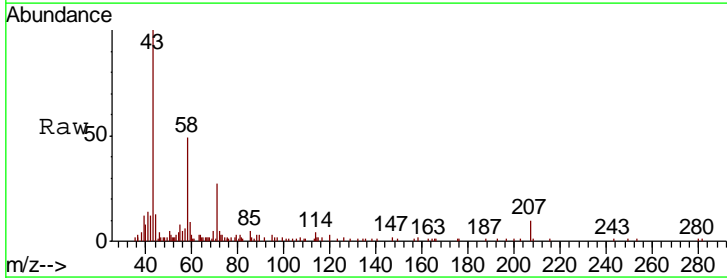
Instrument :
 MSVOA_X
 ClientSampleId :
 PB130403ZHE#02

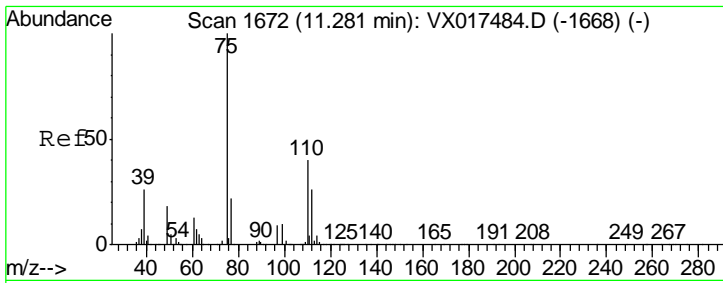
Tgt Ion	Resp	Lower	Upper
152	100		
115	58.2	65.5	196.6#
150	154.2	0.0	412.6



#74
 N-amyl acetate
 Concen: 0.579 ug/l
 RT: 10.80 min Scan# 1594
 Delta R.T. -0.07 min
 Lab File: VX017512.D
 Acq: 23 Jul 2020 23:58

Tgt Ion	Resp	Lower	Upper
43	100		
70	0.0	32.3	48.5#
55	17.2	18.4	27.6#
61	0.0	18.6	28.0#

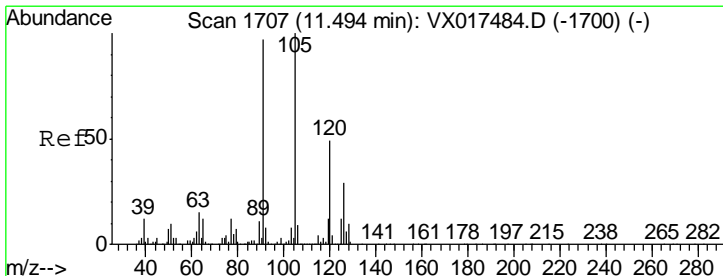
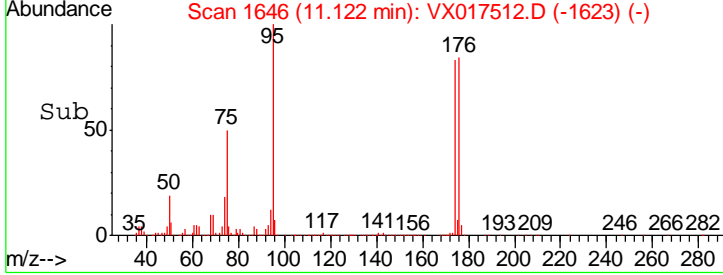
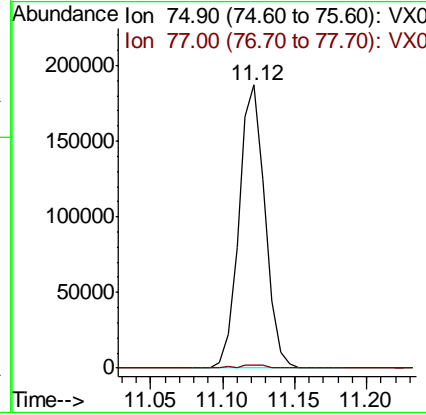
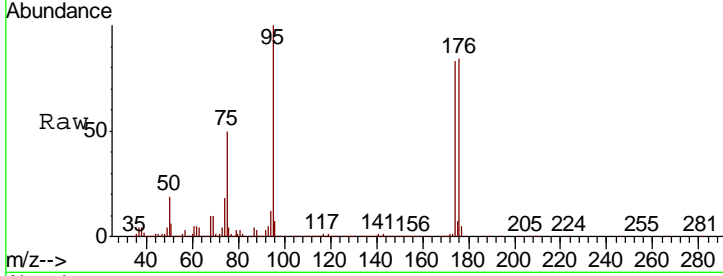




#76
 1,2,3-Trichloropropane
 Concen: 23.686 ug/l
 RT: 11.12 min Scan# 1646
 Delta R.T. -0.16 min
 Lab File: VX017512.D
 Acq: 23 Jul 2020 23:58

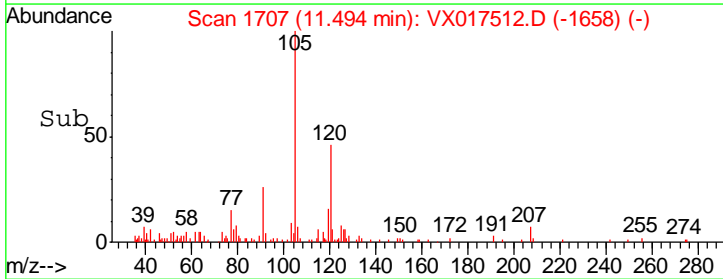
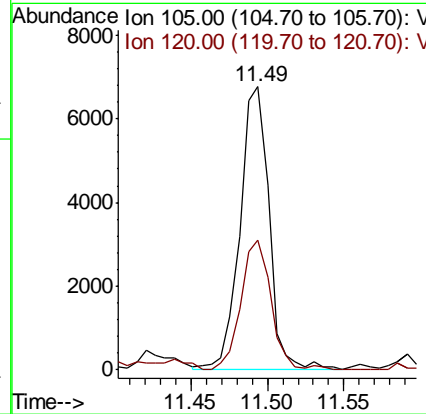
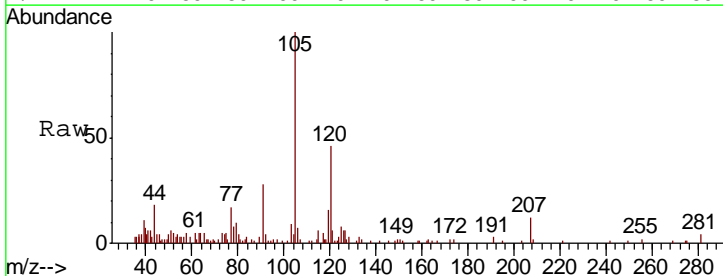
Instrument : MSVOA_X
 ClientSampled : PB130403ZHE#02

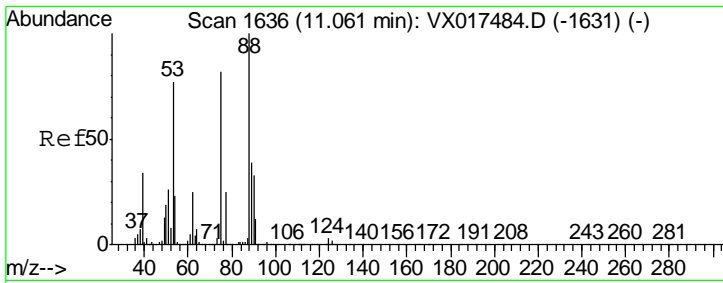
Tgt Ion: 75 Resp: 235793
 Ion Ratio Lower Upper
 75 100
 77 1.4 21.8 65.3#



#80
 1,3,5-Trimethylbenzene
 Concen: 0.315 ug/l
 RT: 11.49 min Scan# 1707
 Delta R.T. -0.00 min
 Lab File: VX017512.D
 Acq: 23 Jul 2020 23:58

Tgt Ion: 105 Resp: 8928
 Ion Ratio Lower Upper
 105 100
 120 46.8 24.1 72.3

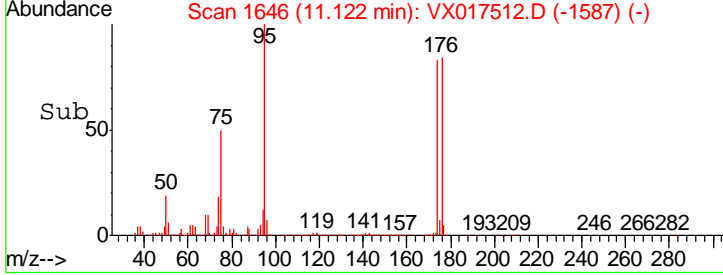
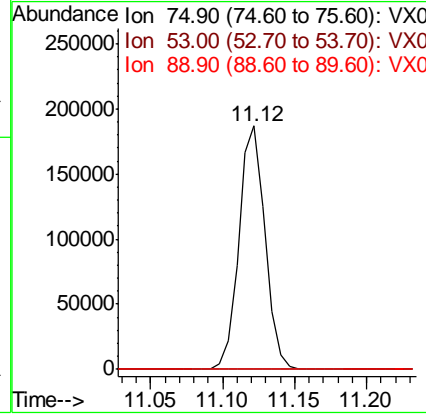
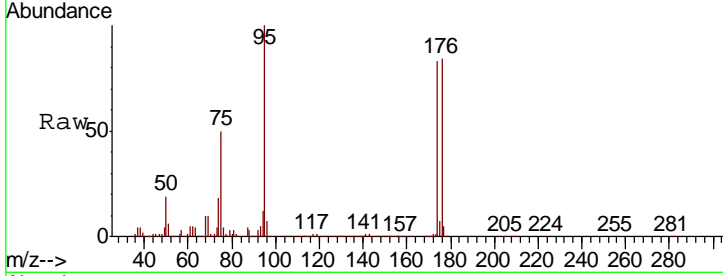




#81
 trans-1,4-Dichloro-2-butene
 Concen: 59.683 ug/l
 RT: 11.12 min Scan# 1646
 Delta R.T. 0.06 min
 Lab File: VX017512.D
 Acq: 23 Jul 2020 23:58

Instrument : MSVOA_X
 ClientSampleID : PB130403ZHE#02

Tgt Ion	Resp	Lower	Upper
75	100		
53	0.1	75.9	113.9#
89	0.0	37.8	56.6#



#92
 1,2-Dibromo-3-Chloropropane
 Concen: 2.713 ug/l
 RT: 12.98 min Scan# 1951
 Delta R.T. 0.00 min
 Lab File: VX017512.D
 Acq: 23 Jul 2020 23:58

Tgt Ion	Resp	Lower	Upper
75	100		
155	15.9	42.3	126.8#
157	0.0	54.3	162.9#

