

Data Path : Z:\VOASRV\HPCHEM1\MSVOA X\DATA\VX072420\
 Data File : VX017598.D
 Acq On : 25 Jul 2020 16:00
 Operator : JC/SP
 Sample : L3383-07
 Misc : 5.0mL/MSVOA X/WATER
 ALS Vial : 72 Sample Multiplier: 1

Instrument :
 MSVOA_X
 ClientSampleId :

Quant Time: Jul 27 01:15:10 2020
 Quant Method : Z:\VOASRV\HPCHEM1\MSVOA_X\METHOD\82X072320W.M
 Quant Title : SW846 8260
 QLast Update : Fri Jul 24 05:48:09 2020
 Response via : Initial Calibration

Internal Standards	R.T.	QIon	Response	Conc	Units	Dev(Min)
1) Pentafluorobenzene	5.63	168	412966	50.00	ug/l	0.00
34) 1,4-Difluorobenzene	6.83	114	694828	50.00	ug/l	0.00
63) Chlorobenzene-d5	10.10	117	723846	50.00	ug/l	0.00
72) 1,4-Dichlorobenzene-d4	12.06	152	389481	50.00	ug/l	0.00

System Monitoring Compounds

33) 1,2-Dichloroethane-d4	6.03	65	293082	55.25	ug/l	0.00
Spiked Amount	50.000		Recovery	=	110.50%	
35) Dibromofluoromethane	5.46	113	239860	51.62	ug/l	0.00
Spiked Amount	50.000		Recovery	=	103.24%	
50) Toluene-d8	8.70	98	884295	52.75	ug/l	0.00
Spiked Amount	50.000		Recovery	=	105.50%	
62) 4-Bromofluorobenzene	11.12	95	377877	56.32	ug/l	0.00
Spiked Amount	50.000		Recovery	=	112.64%	

Target Compounds

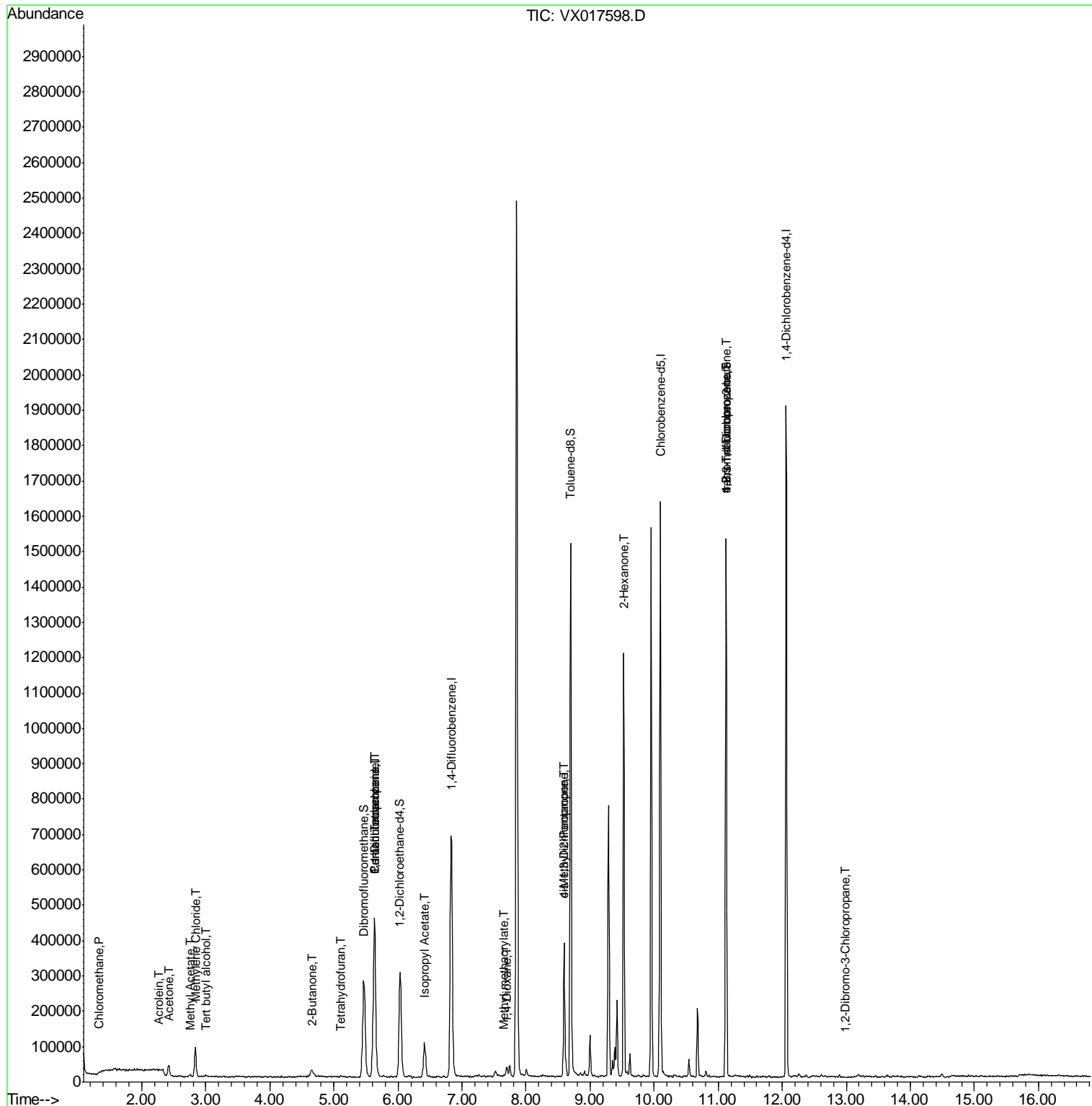
					Qvalue
2) Dichlorodifluoromethane	1.19	85	467	Below Cal	79
3) Chloromethane	1.32	50	629	0.489 ug/l	99
5) Bromomethane	1.64	94	330	Below Cal	# 76
6) Chloroethane	1.71	64	533	Below Cal	# 72
8) Diethyl Ether	2.07	74	671	Below Cal	61
11) Tert butyl alcohol	3.00	59	2265	2.026 ug/l	# 80
13) Acrolein	2.27	56	1173	5.500 ug/l	# 31
16) Acetone	2.42	43	31897	13.662 ug/l	90
18) Methyl Acetate	2.75	43	7059	1.284 ug/l	# 83
20) Methylene Chloride	2.84	84	38937	7.770 ug/l	100
25) 2-Butanone	4.65	43	8324	2.510 ug/l	91
29) Tetrahydrofuran	5.10	42	2553	1.243 ug/l	94
36) 1,1-Dichloropropene	5.63	75	31755	4.765 ug/l	# 54
38) Carbon Tetrachloride	5.63	117	42632	5.268 ug/l	# 17
43) Isopropyl Acetate	6.42	43	131638	10.942 ug/l	98
48) Methyl methacrylate	7.65	41	7928	1.329 ug/l	# 16
49) 1,4-Dioxane	7.69	88	172	1.504 ug/l	# 1
51) 4-Methyl-2-Pentanone	8.60	43	137530	19.160 ug/l	# 47
54) cis-1,3-Dichloropropene	8.60	75	60138	6.993 ug/l	# 62
59) 2-Hexanone	9.52	43	136154	25.194 ug/l	# 52
76) 1,2,3-Trichloropropane	11.12	75	193969	24.210 ug/l	# 34
81) trans-1,4-Dichloro-2-buten	11.12	75	193969	61.005 ug/l	# 11
92) 1,2-Dibromo-3-Chloropropan	12.98	75	97	2.616 ug/l	# 38

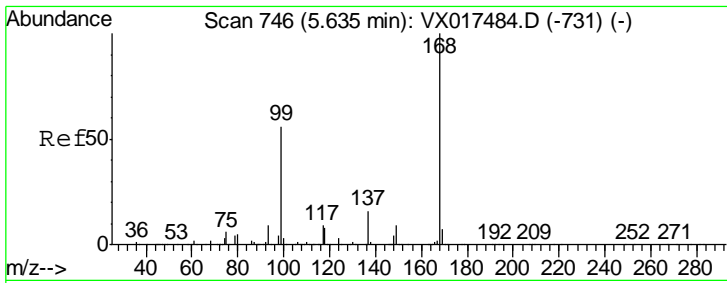
(#) = qualifier out of range (m) = manual integration (+) = signals summed

Data Path : Z:\VOASRV\HPCHEM1\MSVOA X\DATA\VX072420\
 Data File : VX017598.D
 Acq On : 25 Jul 2020 16:00
 Operator : JC/SP
 Sample : L3383-07
 Misc : 5.0mL/MSVOA X/WATER
 ALS Vial : 72 Sample Multiplier: 1

Instrument :
 MSVOA_X
 ClientSampled :

Quant Time: Jul 27 01:15:10 2020
 Quant Method : Z:\VOASRV\HPCHEM1\MSVOA_X\METHOD\82X072320W.M
 Quant Title : SW846 8260
 QLast Update : Fri Jul 24 05:48:09 2020
 Response via : Initial Calibration

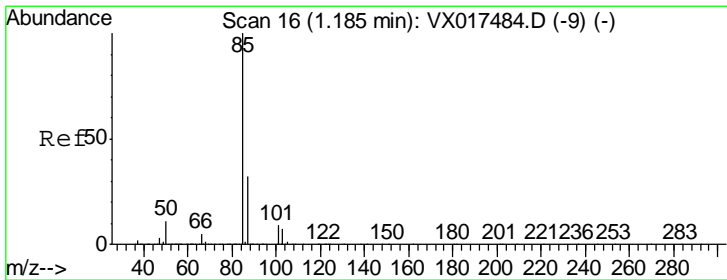
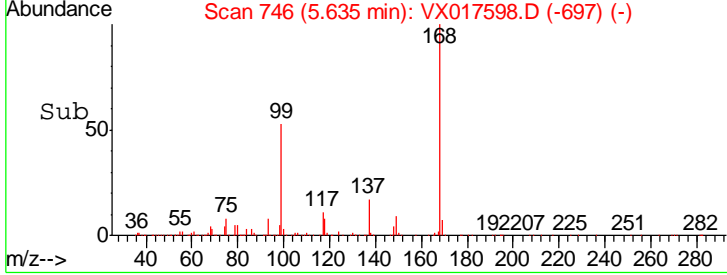
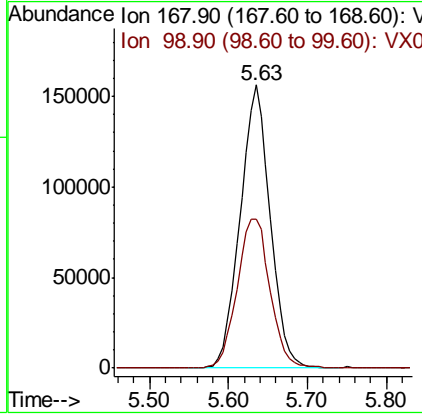
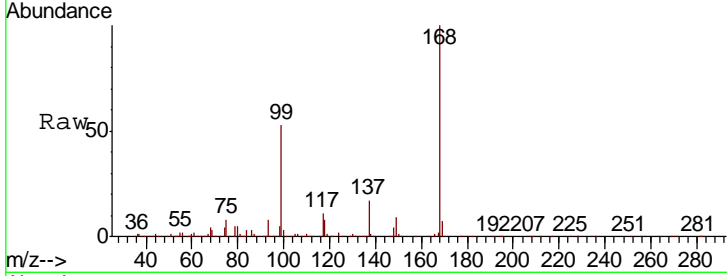




#1
 Pentafluorobenzene
 Concen: 50.000 ug/l
 RT: 5.63 min Scan# 746
 Delta R.T. -0.00 min
 Lab File: VX017598.D
 Acq: 25 Jul 2020 16:00

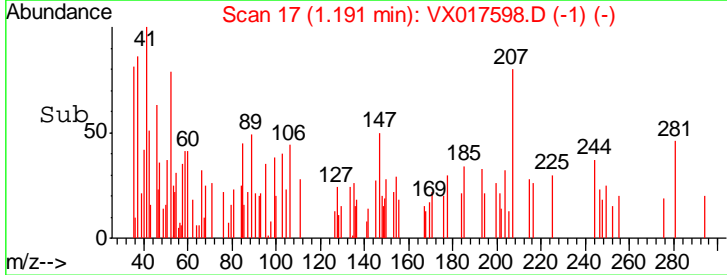
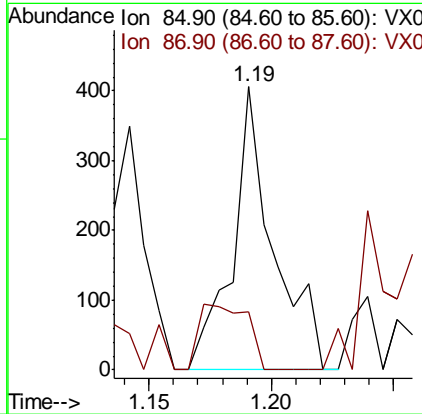
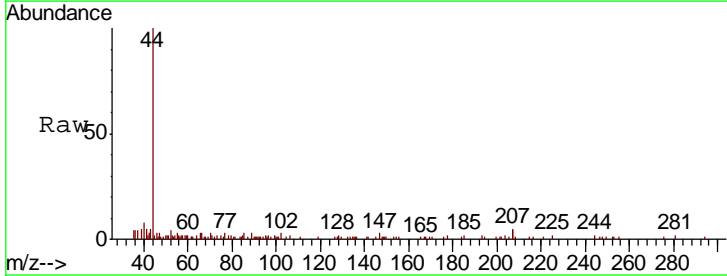
Instrument :
 MSVOA_X
 ClientSampled :

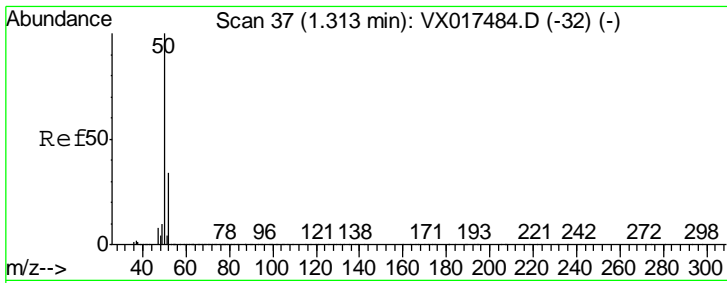
Tgt Ion	Resp	Lower	Upper
168	412966		
99	52.5	43.4	65.2



#2
 Dichlorodifluoromethane
 Concen: Below Cal
 RT: 1.19 min Scan# 17
 Delta R.T. 0.01 min
 Lab File: VX017598.D
 Acq: 25 Jul 2020 16:00

Tgt Ion	Resp	Lower	Upper
85	467		
87	20.7	16.1	48.3

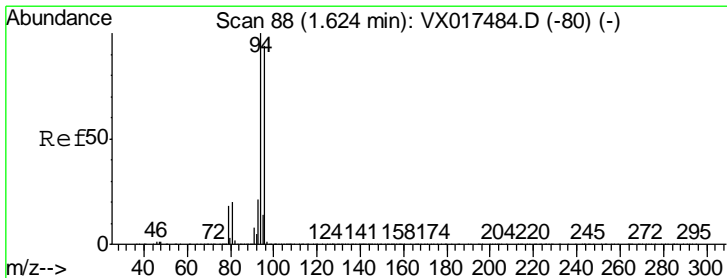
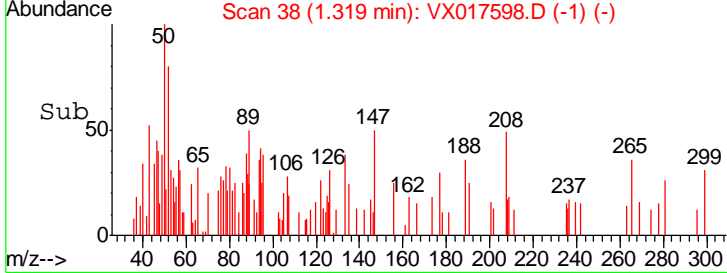
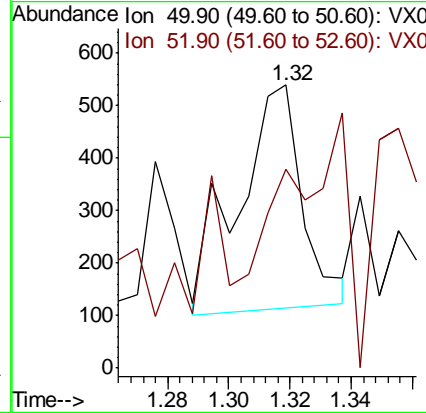
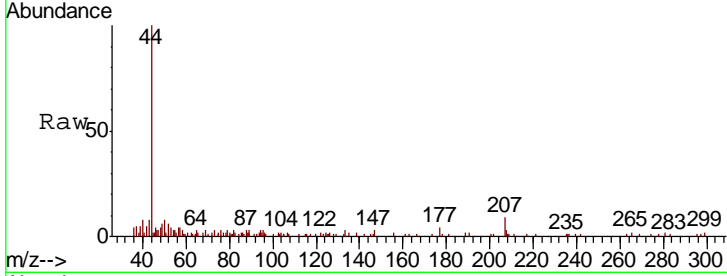




#3
 Chloromethane
 Concen: 0.489 ug/l
 RT: 1.32 min Scan# 38
 Delta R.T. 0.01 min
 Lab File: VX017598.D
 Acq: 25 Jul 2020 16:00

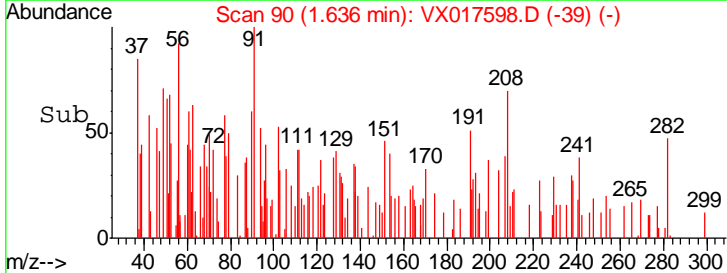
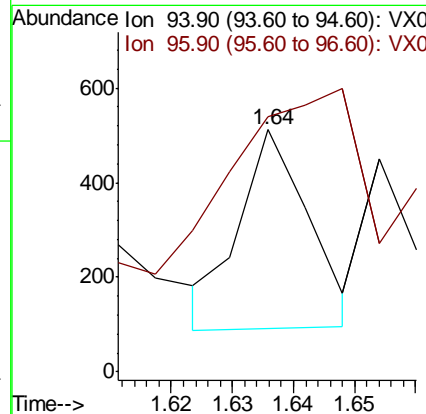
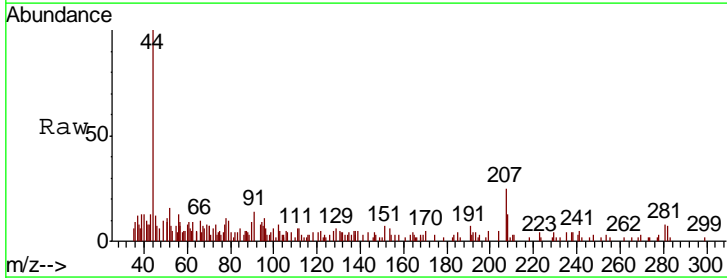
Instrument : MSVOA_X
 ClientSampled :

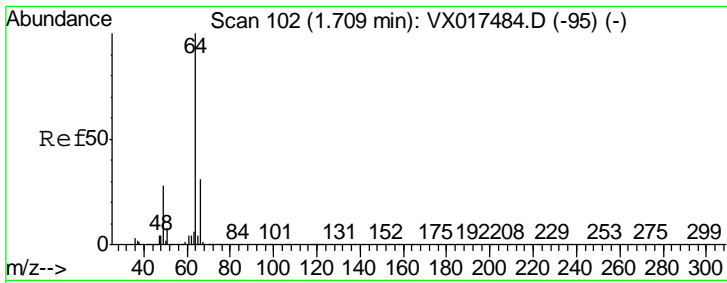
Tgt Ion: 50 Resp: 629
 Ion Ratio Lower Upper
 50 100
 52 32.7 25.9 38.9



#5
 Bromomethane
 Concen: Below Cal
 RT: 1.64 min Scan# 90
 Delta R.T. 0.01 min
 Lab File: VX017598.D
 Acq: 25 Jul 2020 16:00

Tgt Ion: 94 Resp: 330
 Ion Ratio Lower Upper
 94 100
 96 69.5 74.1 111.1#

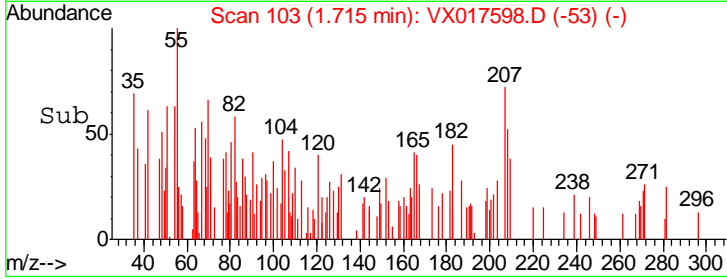
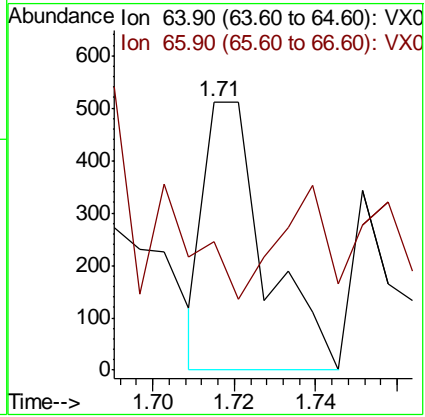
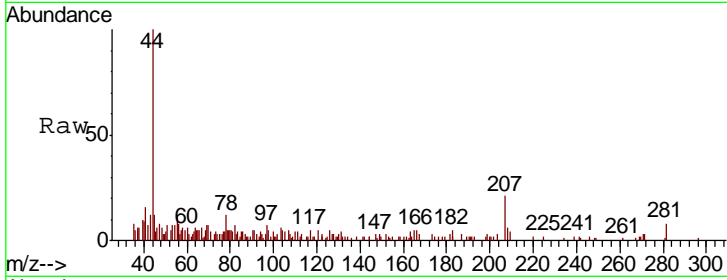




#6
 Chloroethane
 Concen: Below Cal
 RT: 1.71 min Scan# 103
 Delta R.T. 0.01 min
 Lab File: VX017598.D
 Acq: 25 Jul 2020 16:00

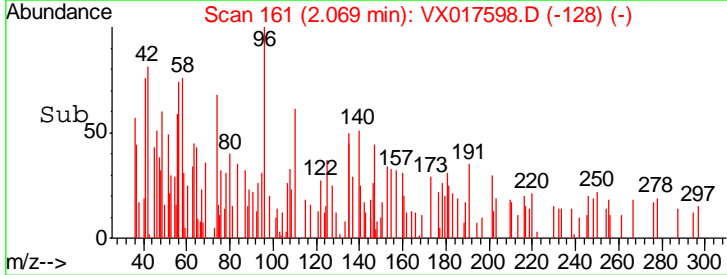
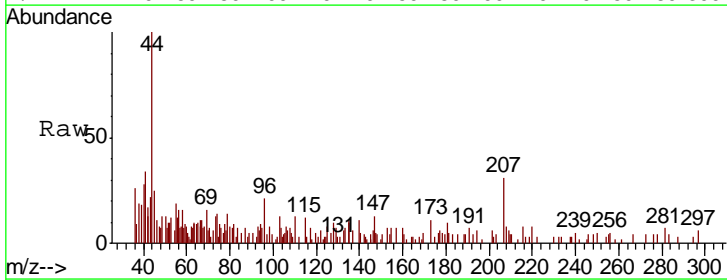
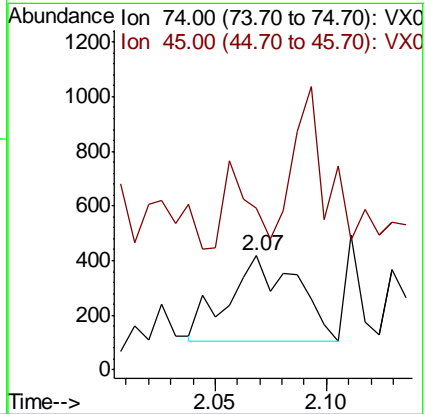
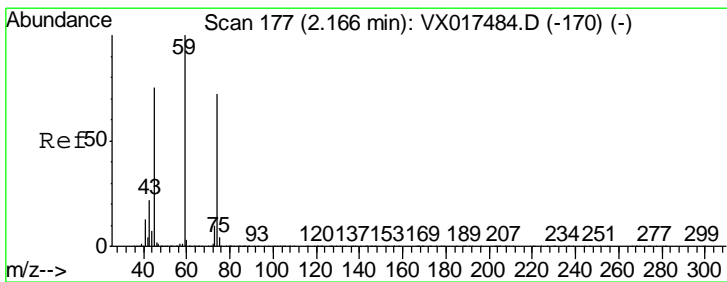
Instrument : MSVOA_X
 Client Sampled :

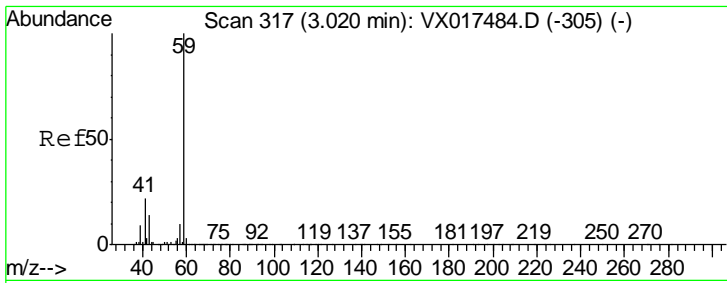
Tgt Ion	Resp	Lower	Upper
64	100		
66	15.8	24.9	37.3#



#8
 Diethyl Ether
 Concen: Below Cal
 RT: 2.07 min Scan# 161
 Delta R.T. -0.10 min
 Lab File: VX017598.D
 Acq: 25 Jul 2020 16:00

Tgt Ion	Resp	Lower	Upper
74	100		
45	62.3	50.8	152.5

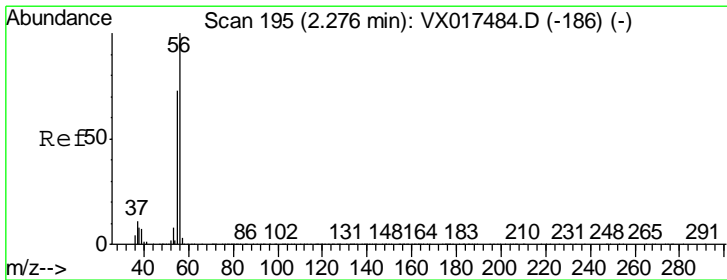
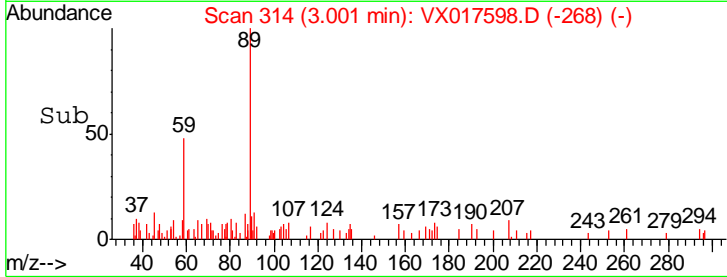
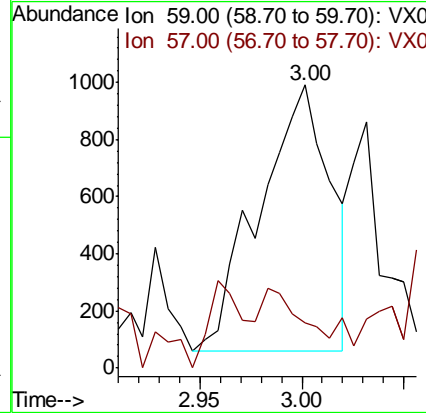
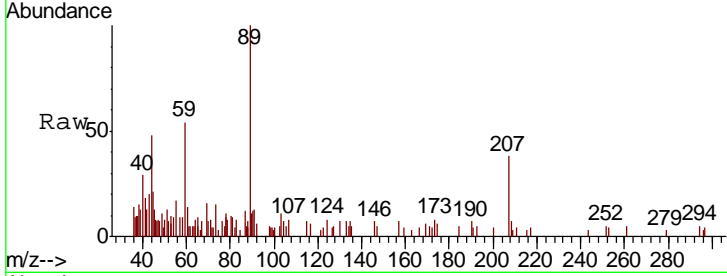




#11
 Tert butyl alcohol
 Concen: 2.026 ug/l
 RT: 3.00 min Scan# 314
 Delta R.T. -0.02 min
 Lab File: VX017598.D
 Acq: 25 Jul 2020 16:00

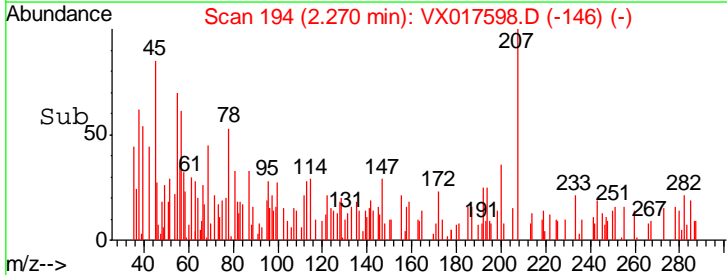
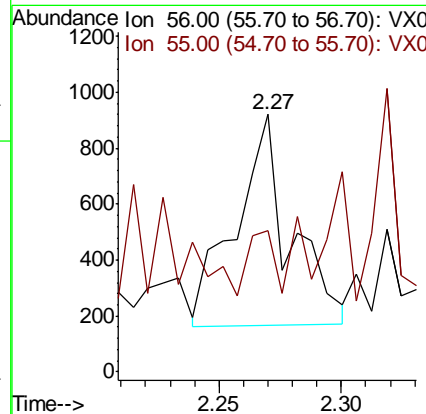
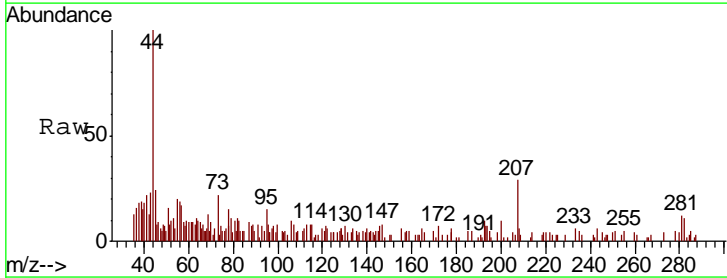
Instrument :
 MSVOA_X
 ClientSampled :

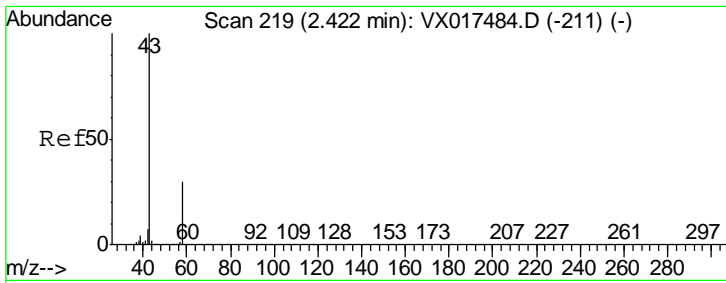
Tgt Ion: 59 Resp: 2265
 Ion Ratio Lower Upper
 59 100
 57 18.3 8.6 12.8#



#13
 Acrolein
 Concen: 5.500 ug/l
 RT: 2.27 min Scan# 194
 Delta R.T. -0.01 min
 Lab File: VX017598.D
 Acq: 25 Jul 2020 16:00

Tgt Ion: 56 Resp: 1173
 Ion Ratio Lower Upper
 56 100
 55 14.7 57.4 86.2#

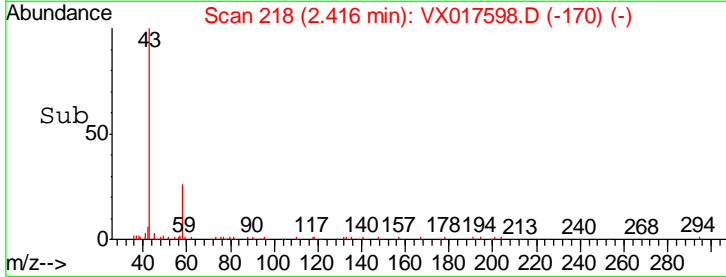
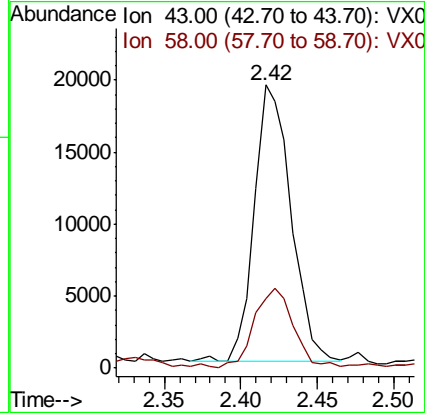
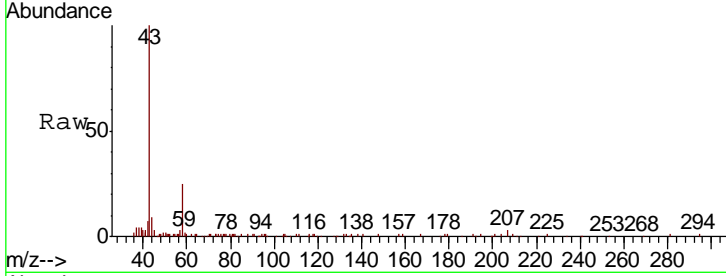




#16
 Acetone
 Concen: 13.662 ug/l
 RT: 2.42 min Scan# 218
 Delta R.T. -0.01 min
 Lab File: VX017598.D
 Acq: 25 Jul 2020 16:00

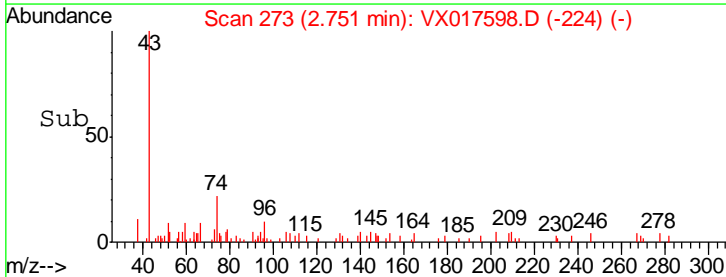
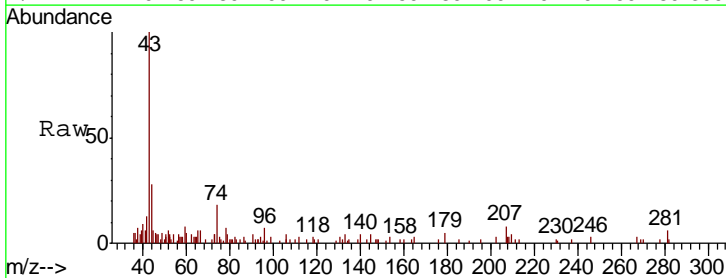
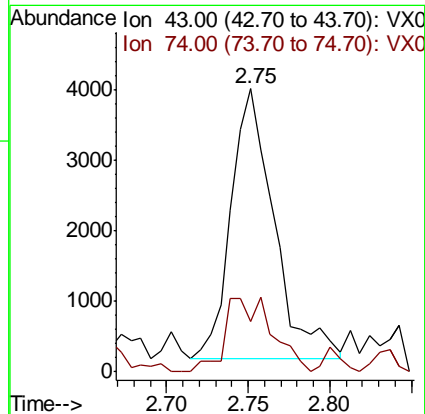
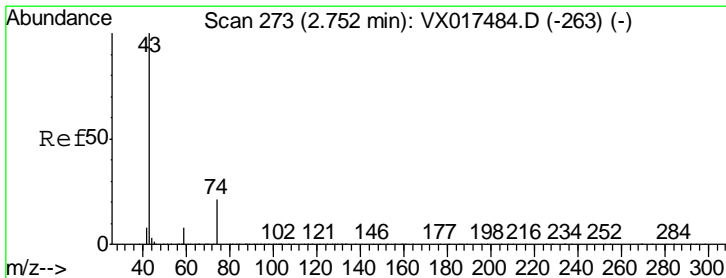
Instrument :
 MSVOA_X
 ClientSampled :

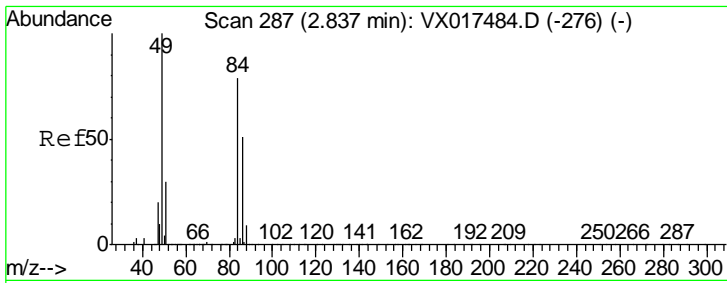
Tgt Ion	Resp	Lower	Upper
43	31897		
58	24.9	24.2	36.4



#18
 Methyl Acetate
 Concen: 1.284 ug/l
 RT: 2.75 min Scan# 273
 Delta R.T. -0.00 min
 Lab File: VX017598.D
 Acq: 25 Jul 2020 16:00

Tgt Ion	Resp	Lower	Upper
43	7059		
74	30.1	17.5	26.3#

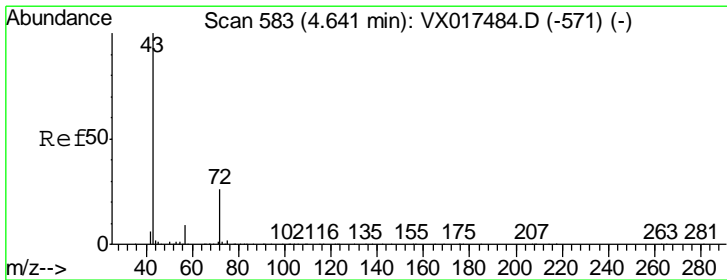
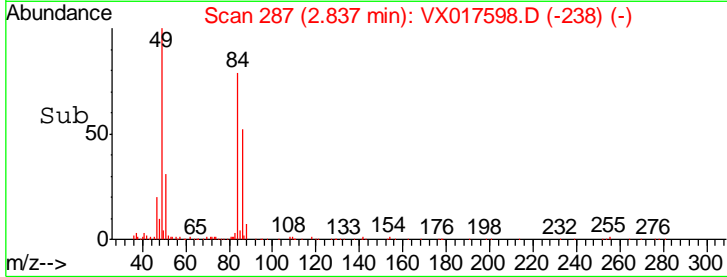
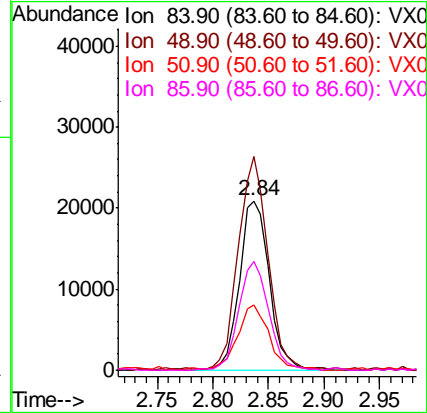
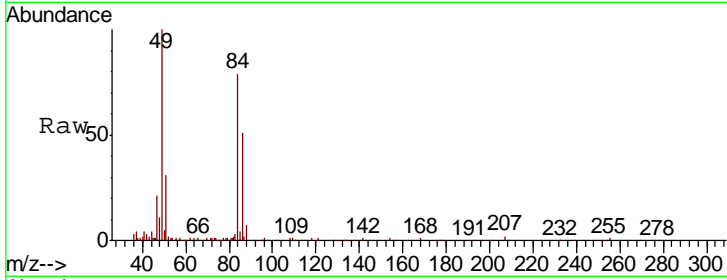




#20
 Methylene Chloride
 Concen: 7.770 ug/l
 RT: 2.84 min Scan# 287
 Delta R.T. 0.00 min
 Lab File: VX017598.D
 Acq: 25 Jul 2020 16:00

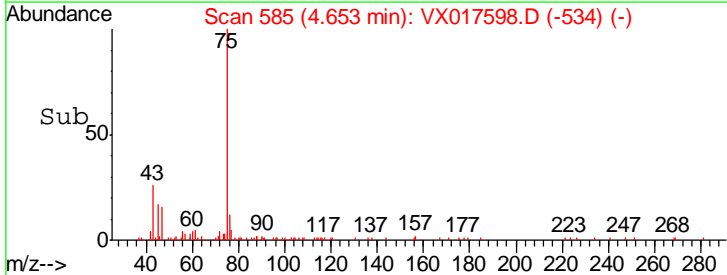
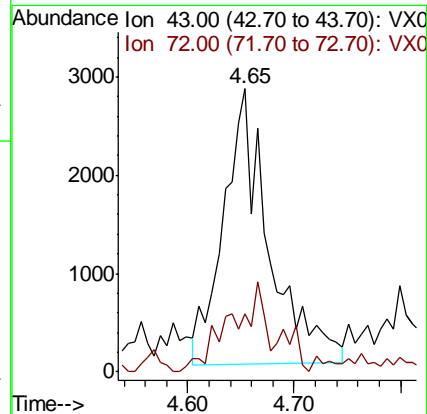
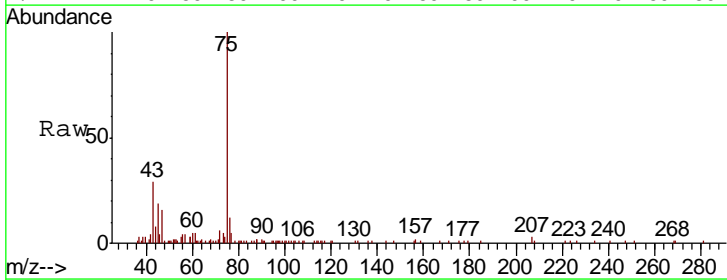
Instrument :
 MSVOA_X
 ClientSampled :

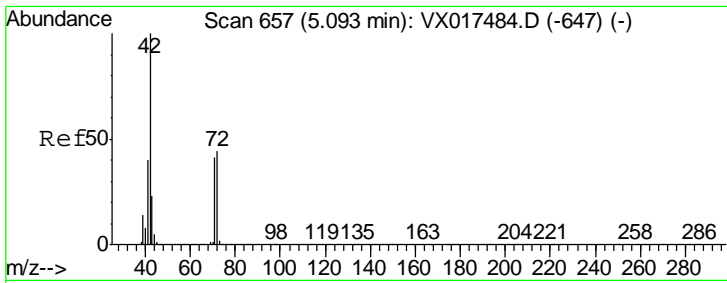
Tgt Ion	Resp	Lower	Upper
84	38937		
49	125.6	100.3	150.5
51	38.8	30.5	45.7
86	64.3	51.1	76.7



#25
 2-Butanone
 Concen: 2.510 ug/l
 RT: 4.65 min Scan# 585
 Delta R.T. 0.01 min
 Lab File: VX017598.D
 Acq: 25 Jul 2020 16:00

Tgt Ion	Resp	Lower	Upper
43	8324		
72	19.4	19.0	28.4

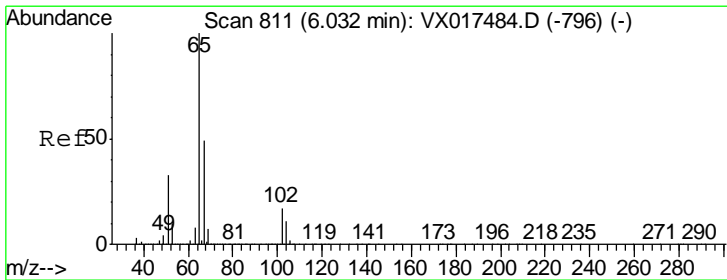
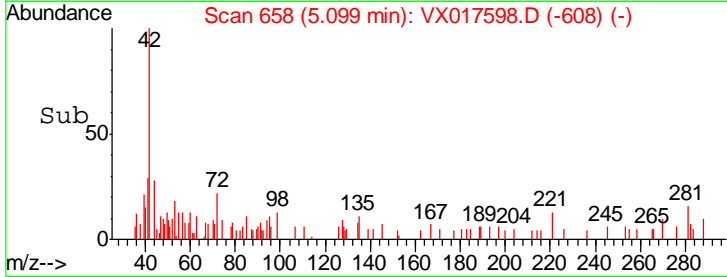
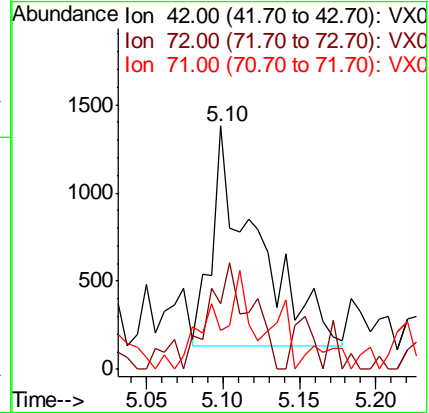
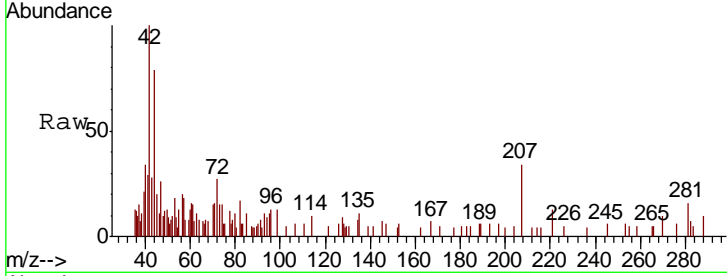




#29
 Tetrahydrofuran
 Concen: 1.243 ug/l
 RT: 5.10 min Scan# 658
 Delta R.T. 0.01 min
 Lab File: VX017598.D
 Acq: 25 Jul 2020 16:00

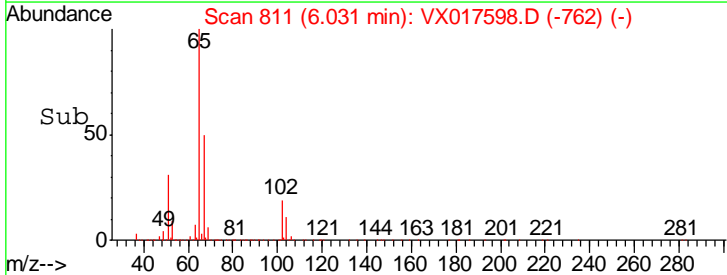
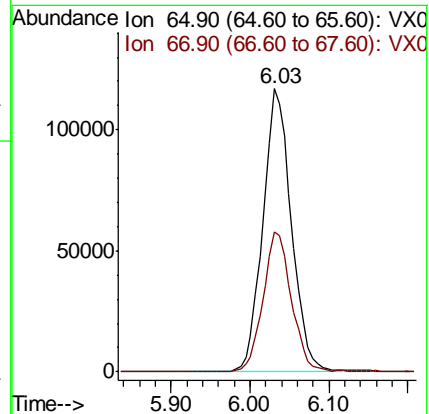
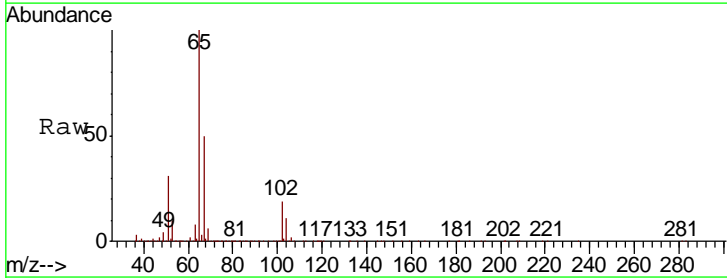
Instrument : MSVOA_X
 ClientSampled :

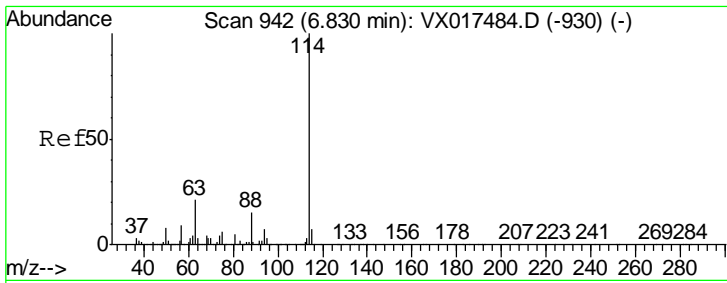
Tgt Ion	Resp	Lower	Upper
42	100		
72	43.8	35.5	53.3
71	34.7	33.0	49.4



#33
 1,2-Dichloroethane-d4
 Concen: 55.249 ug/l
 RT: 6.03 min Scan# 811
 Delta R.T. -0.00 min
 Lab File: VX017598.D
 Acq: 25 Jul 2020 16:00

Tgt Ion	Resp	Lower	Upper
65	100		
67	48.8	0.0	102.8

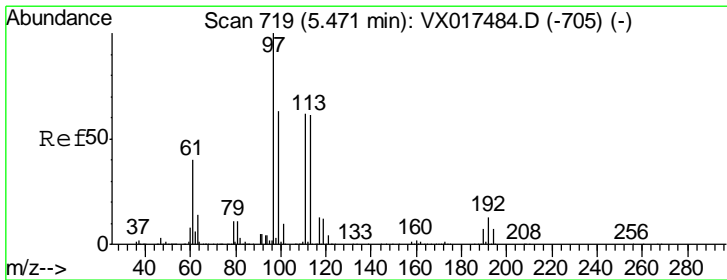
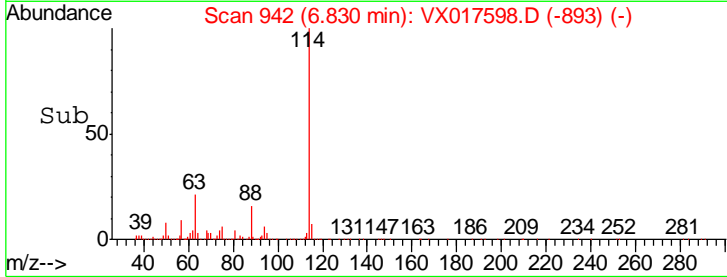
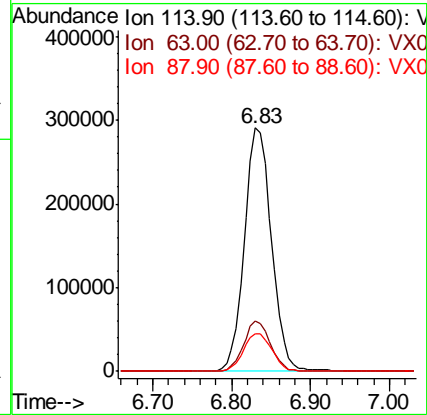
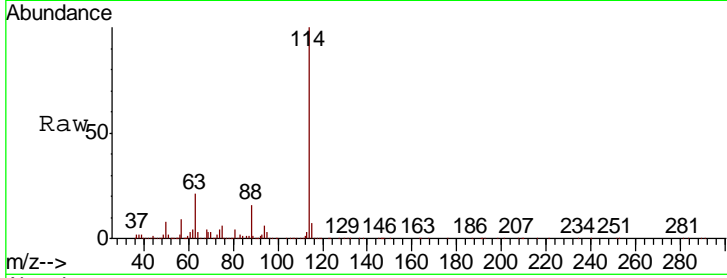




#34
 1,4-Difluorobenzene
 Concen: 50.000 ug/l
 RT: 6.83 min Scan# 942
 Delta R.T. -0.00 min
 Lab File: VX017598.D
 Acq: 25 Jul 2020 16:00

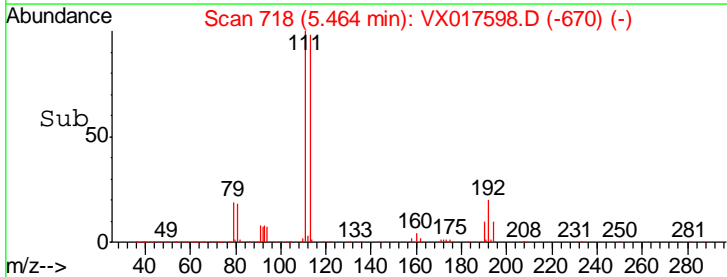
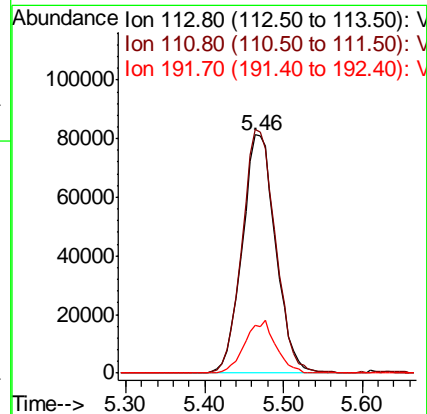
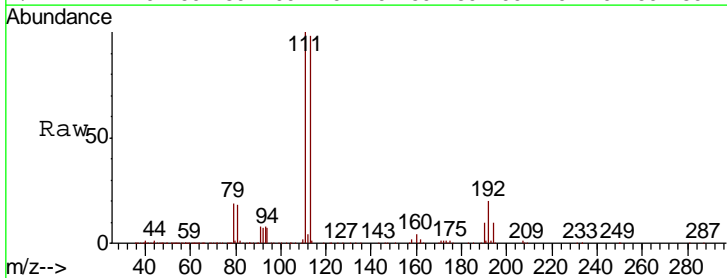
Instrument :
 MSVOA_X
 ClientSampled :

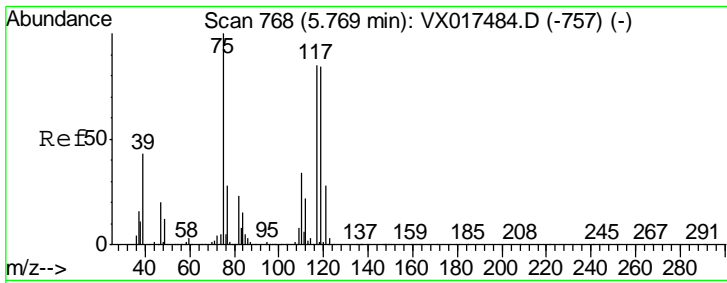
Tgt Ion	Resp	Lower	Upper
114	100		
63	20.5	0.0	40.6
88	15.5	0.0	33.4



#35
 Dibromofluoromethane
 Concen: 51.616 ug/l
 RT: 5.46 min Scan# 718
 Delta R.T. -0.01 min
 Lab File: VX017598.D
 Acq: 25 Jul 2020 16:00

Tgt Ion	Resp	Lower	Upper
113	100		
111	101.7	80.7	121.1
192	20.7	16.9	25.3

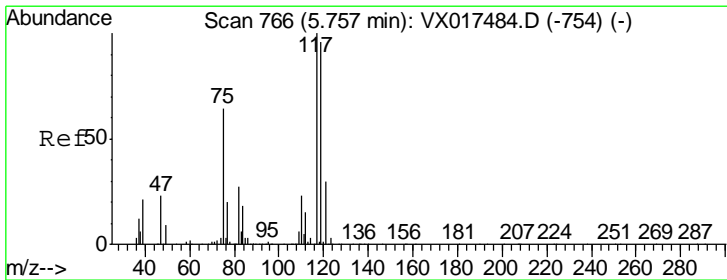
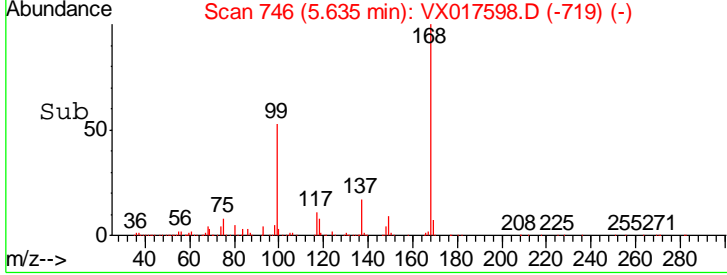
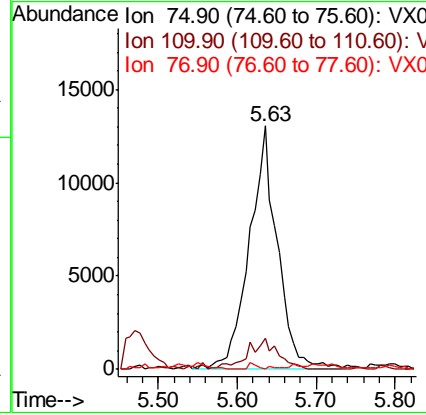
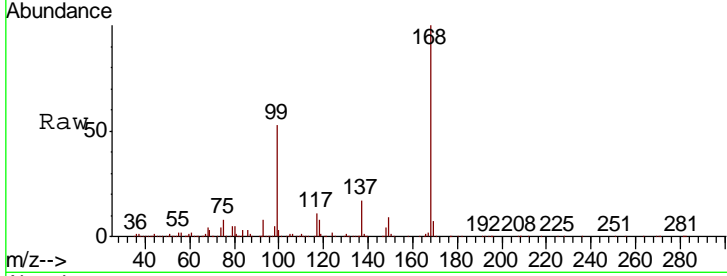




#36
 1,1-Dichloropropene
 Concen: 4.765 ug/l
 RT: 5.63 min Scan# 746
 Delta R.T. -0.13 min
 Lab File: VX017598.D
 Acq: 25 Jul 2020 16:00

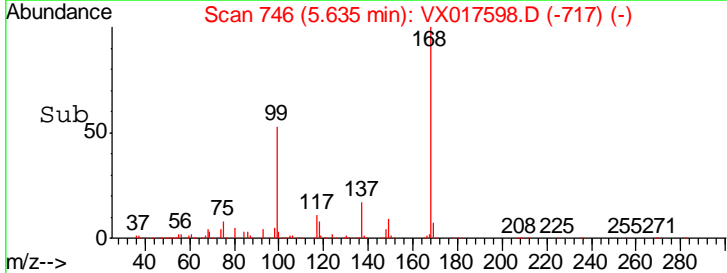
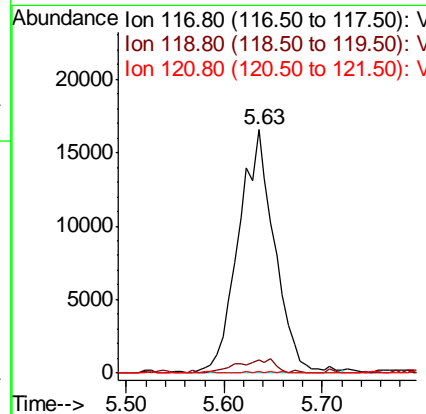
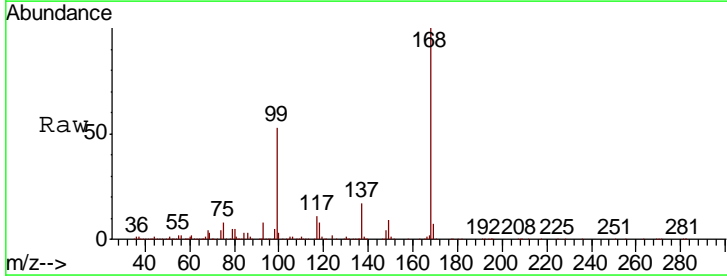
Instrument :
 MSVOA_X
 ClientSampled :

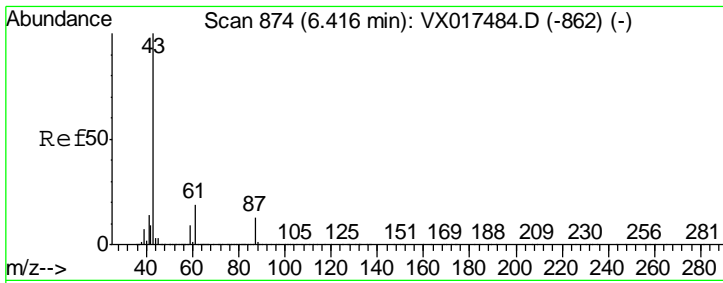
Tgt Ion	Resp	Lower	Upper
75	100		
110	13.9	18.1	54.3#
77	0.8	24.6	37.0#



#38
 Carbon Tetrachloride
 Concen: 5.268 ug/l
 RT: 5.63 min Scan# 746
 Delta R.T. -0.12 min
 Lab File: VX017598.D
 Acq: 25 Jul 2020 16:00

Tgt Ion	Resp	Lower	Upper
117	100		
119	5.6	75.4	113.0#
121	0.5	24.3	36.5#

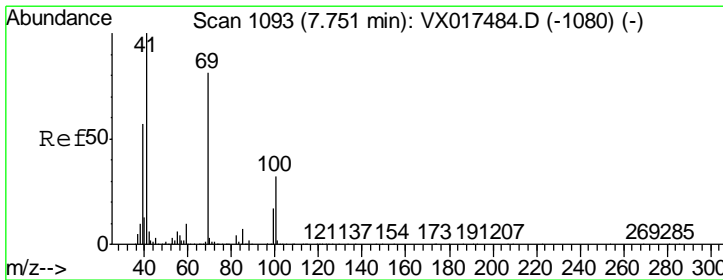
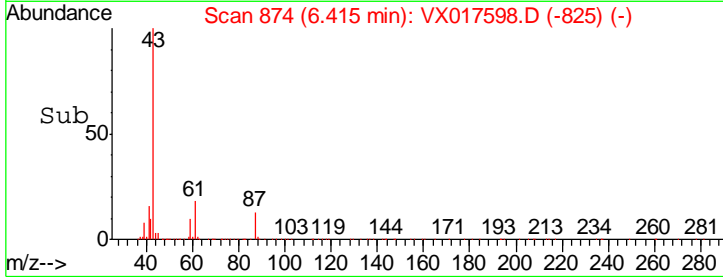
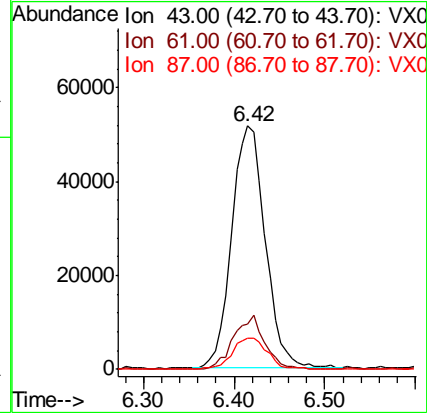
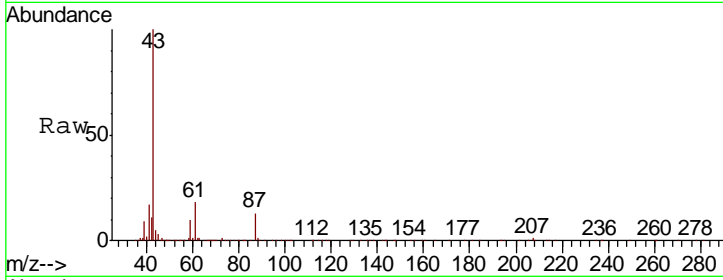




#43
 Isopropyl Acetate
 Concen: 10.942 ug/l
 RT: 6.42 min Scan# 874
 Delta R.T. -0.00 min
 Lab File: VX017598.D
 Acq: 25 Jul 2020 16:00

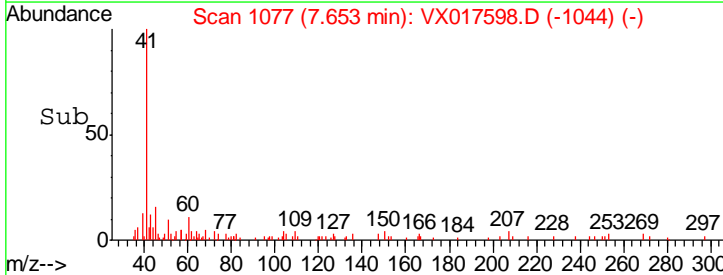
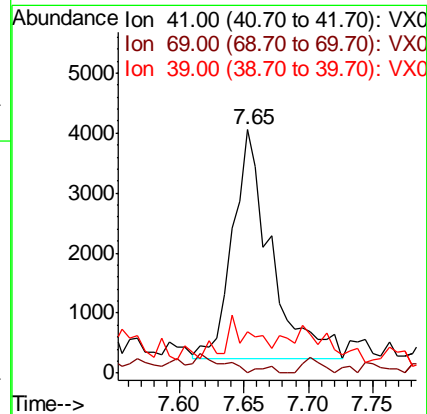
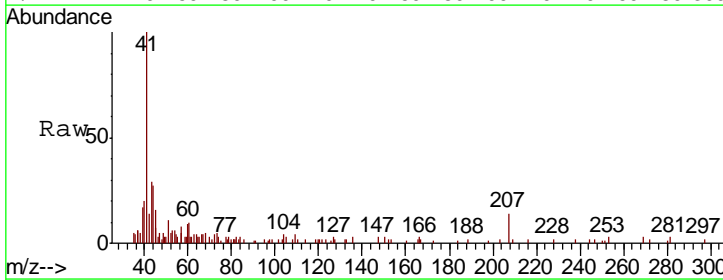
Instrument :
 MSVOA_X
 ClientSampled :

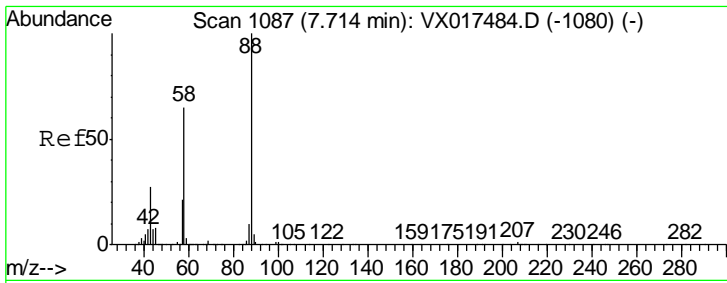
Tgt Ion	Resp	Lower	Upper
43	131638		
61	20.7	15.5	23.3
87	13.9	10.5	15.7



#48
 Methyl methacrylate
 Concen: 1.329 ug/l
 RT: 7.65 min Scan# 1077
 Delta R.T. -0.10 min
 Lab File: VX017598.D
 Acq: 25 Jul 2020 16:00

Tgt Ion	Resp	Lower	Upper
41	7928		
69	1.2	63.1	94.7#
39	0.0	45.1	67.7#

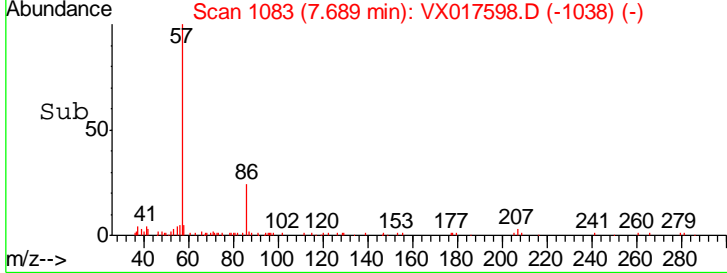
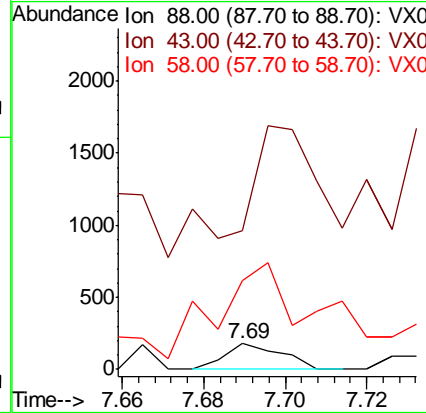
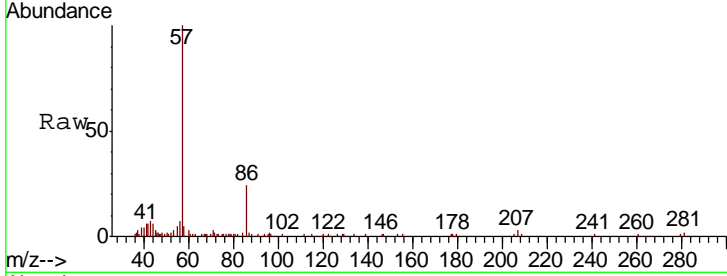




#49
 1,4-Dioxane
 Concen: 1.504 ug/l
 RT: 7.69 min Scan# 1083
 Delta R.T. -0.02 min
 Lab File: VX017598.D
 Acq: 25 Jul 2020 16:00

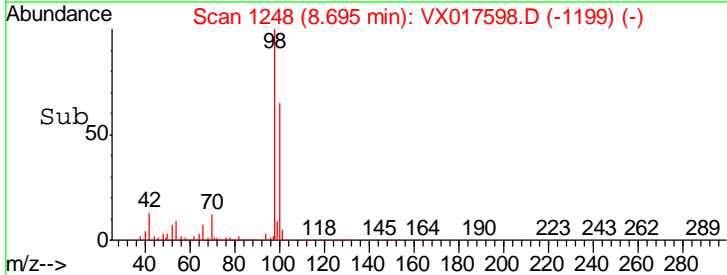
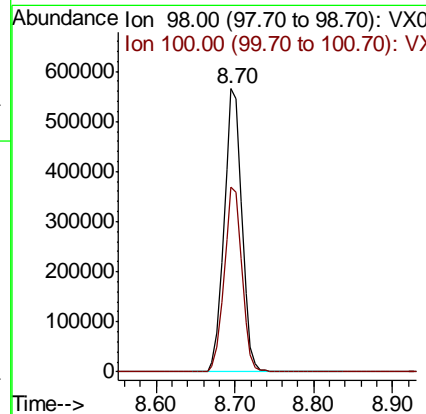
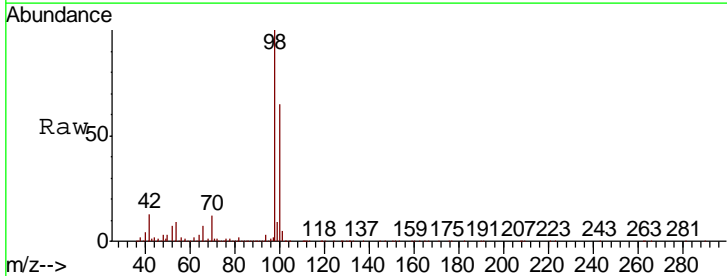
Instrument :
 MSVOA_X
 ClientSampled :

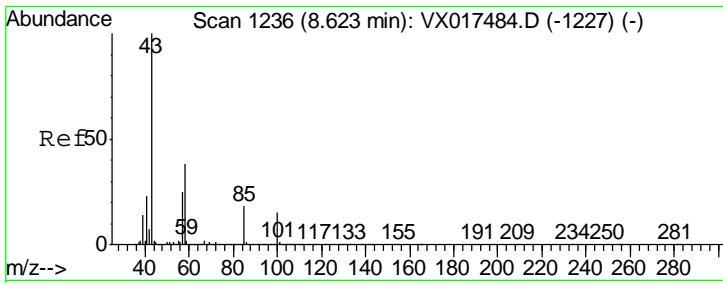
Tgt Ion	Resp	Lower	Upper
88	172		
43	0.0	27.8	41.6#
58	676.7	58.3	87.5#



#50
 Toluene-d8
 Concen: 52.749 ug/l
 RT: 8.70 min Scan# 1248
 Delta R.T. -0.00 min
 Lab File: VX017598.D
 Acq: 25 Jul 2020 16:00

Tgt Ion	Resp	Lower	Upper
98	884295		
100	65.0	52.3	78.5

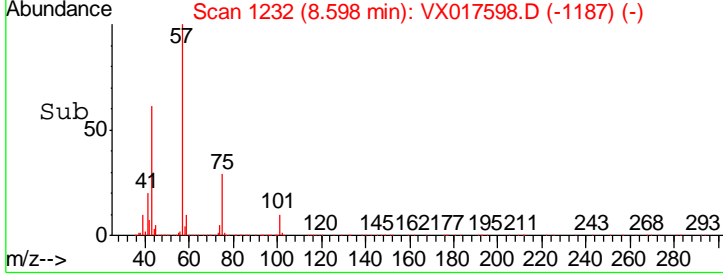
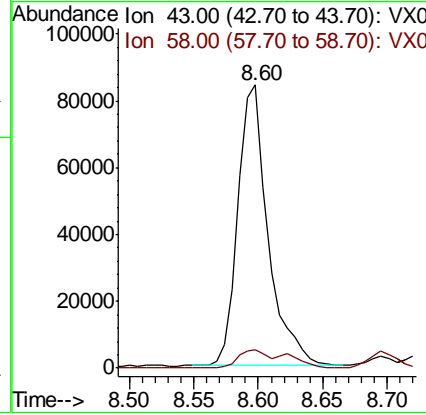
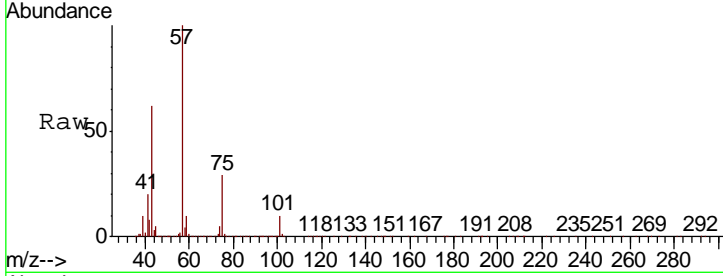




#51
 4-Methyl-2-Pentanone
 Concen: 19.160 ug/l
 RT: 8.60 min Scan# 1232
 Delta R.T. -0.02 min
 Lab File: VX017598.D
 Acq: 25 Jul 2020 16:00

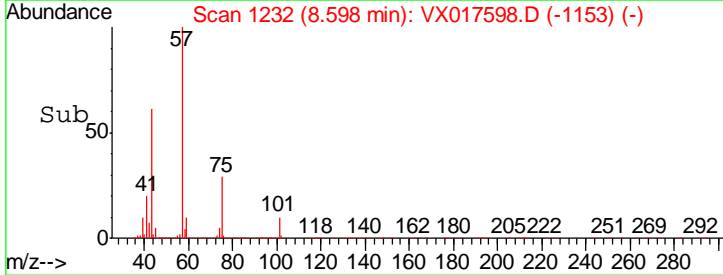
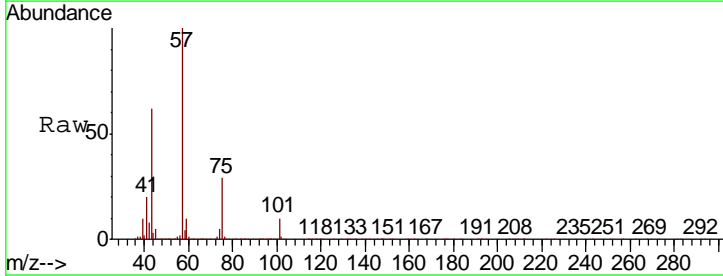
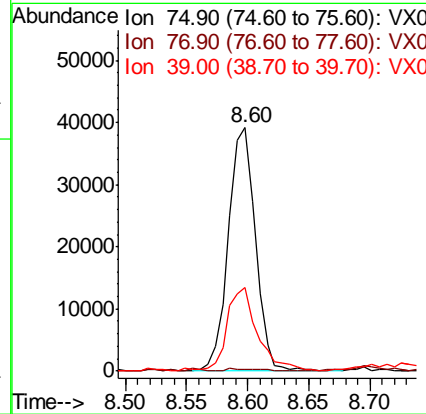
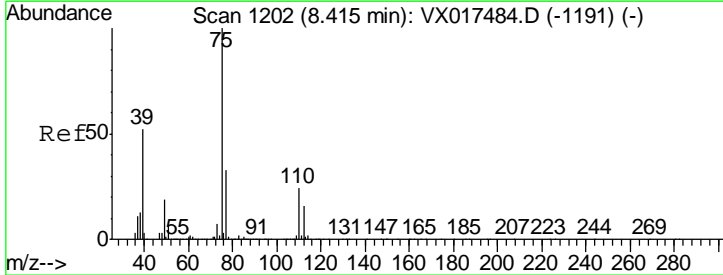
Instrument :
 MSVOA_X
 ClientSampled :

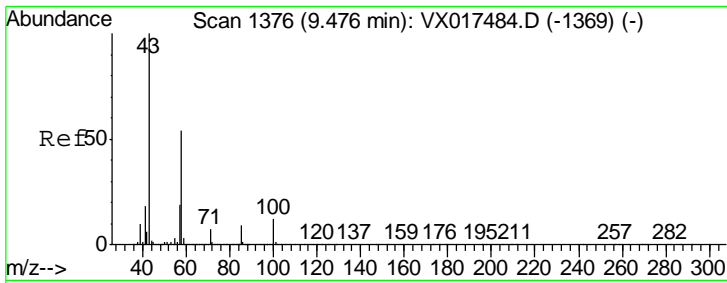
Tgt Ion	Resp	Lower	Upper
43	137530		
58	6.5	31.0	46.4#



#54
 cis-1,3-Dichloropropene
 Concen: 6.993 ug/l
 RT: 8.60 min Scan# 1232
 Delta R.T. 0.18 min
 Lab File: VX017598.D
 Acq: 25 Jul 2020 16:00

Tgt Ion	Resp	Lower	Upper
75	60138		
77	0.2	25.5	38.3#
39	33.9	41.8	62.8#

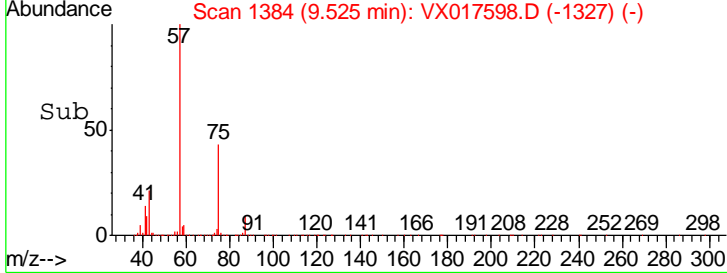
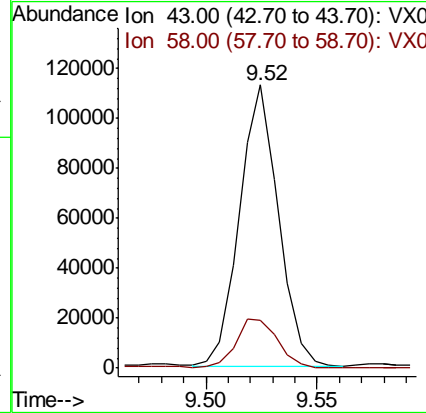
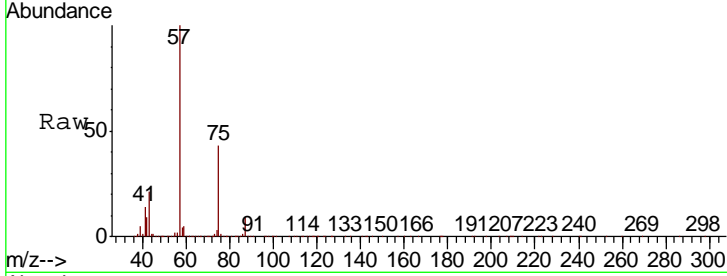




#59
 2-Hexanone
 Concen: 25.194 ug/l
 RT: 9.52 min Scan# 1384
 Delta R.T. 0.05 min
 Lab File: VX017598.D
 Acq: 25 Jul 2020 16:00

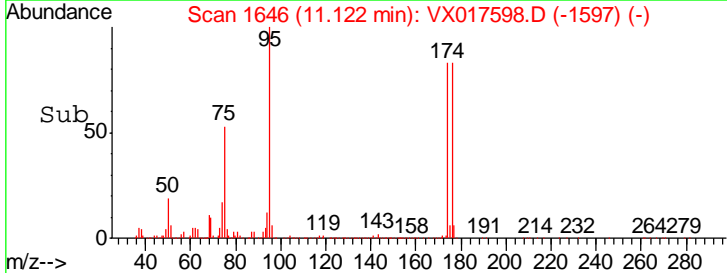
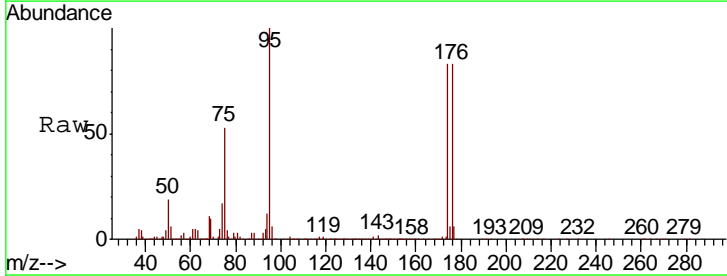
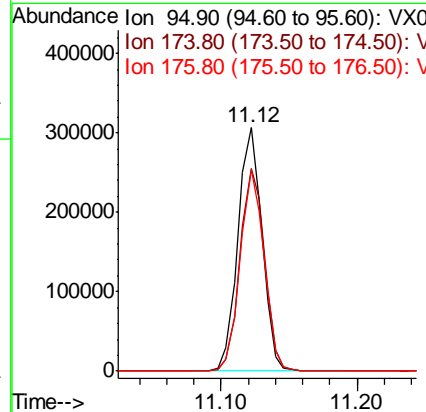
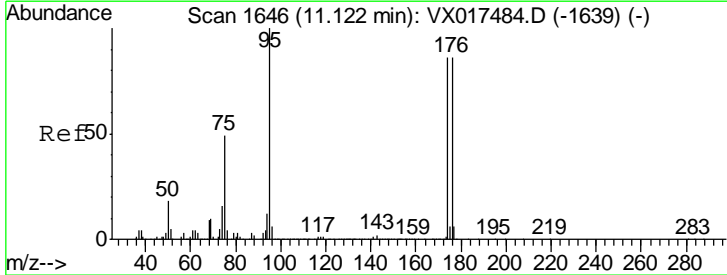
Instrument :
 MSVOA_X
 ClientSampled :

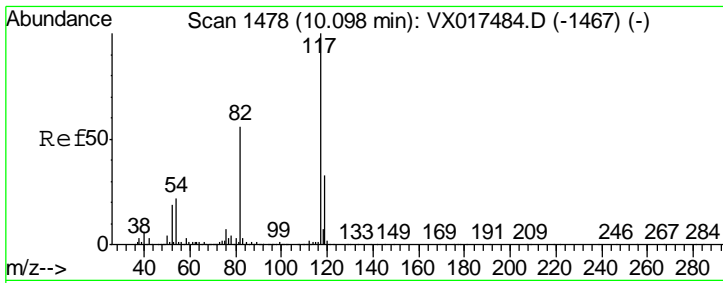
Tgt Ion: 43 Resp: 136154
 Ion Ratio Lower Upper
 43 100
 58 18.8 26.6 79.8#



#62
 4-Bromofluorobenzene
 Concen: 56.324 ug/l
 RT: 11.12 min Scan# 1646
 Delta R.T. -0.00 min
 Lab File: VX017598.D
 Acq: 25 Jul 2020 16:00

Tgt Ion: 95 Resp: 377877
 Ion Ratio Lower Upper
 95 100
 174 85.2 0.0 169.0
 176 82.1 0.0 161.0

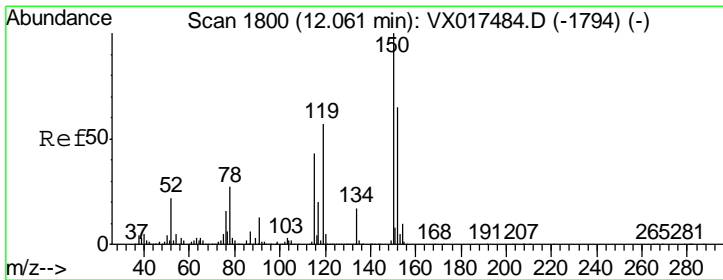
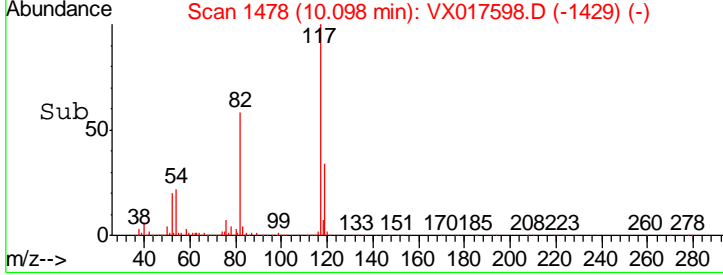
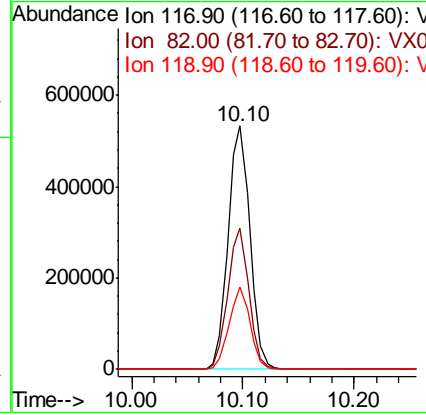
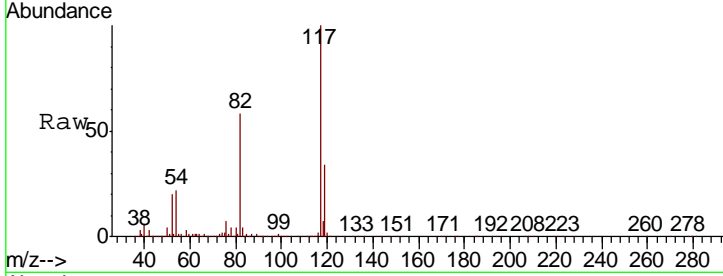




#63
 Chlorobenzene-d5
 Concen: 50.000 ug/l
 RT: 10.10 min Scan# 1478
 Delta R.T. -0.00 min
 Lab File: VX017598.D
 Acq: 25 Jul 2020 16:00

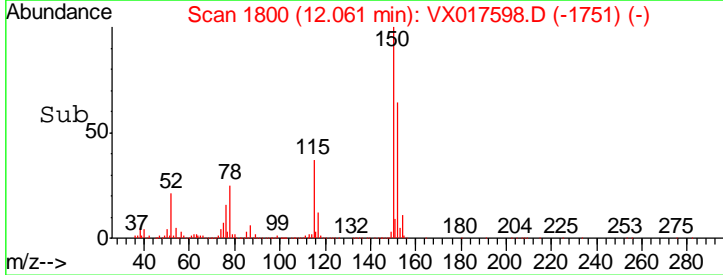
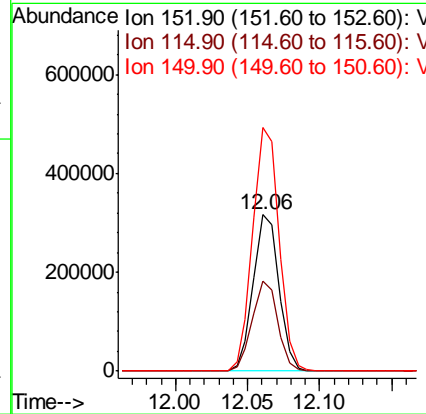
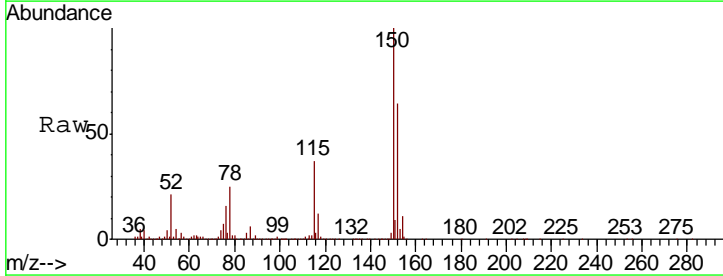
Instrument :
 MSVOA_X
 ClientSampled :

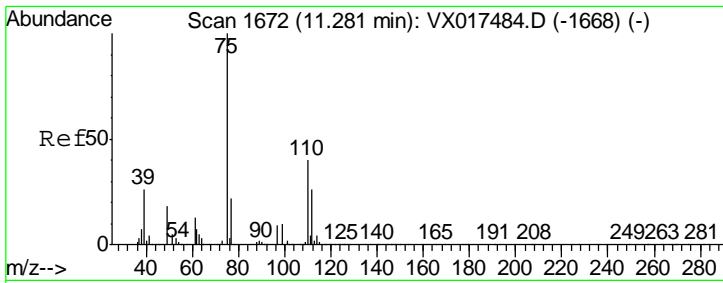
Tgt Ion	Resp	Lower	Upper
117	100		
82	58.1	44.0	66.0
119	34.0	25.4	38.0



#72
 1,4-Dichlorobenzene-d4
 Concen: 50.000 ug/l
 RT: 12.06 min Scan# 1800
 Delta R.T. -0.00 min
 Lab File: VX017598.D
 Acq: 25 Jul 2020 16:00

Tgt Ion	Resp	Lower	Upper
152	100		
115	57.2	65.5	196.6#
150	159.7	0.0	412.6

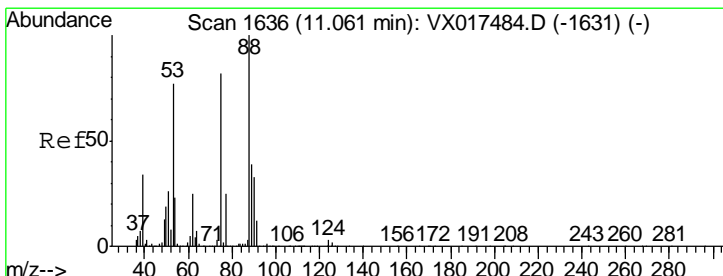
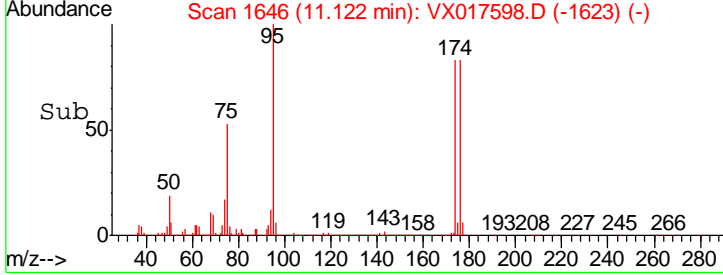
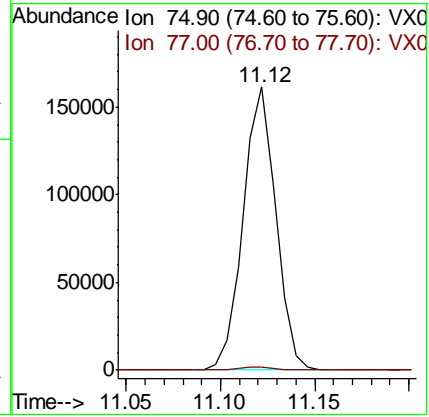
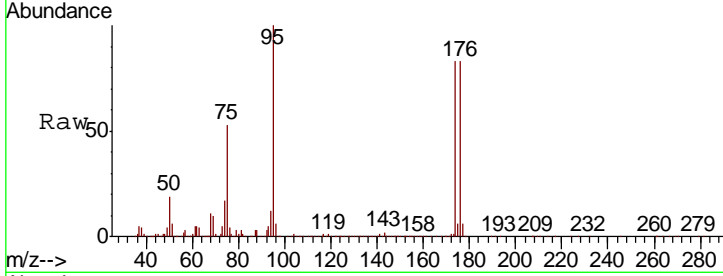




#76
 1,2,3-Trichloropropane
 Concen: 24.210 ug/l
 RT: 11.12 min Scan# 1646
 Delta R.T. -0.16 min
 Lab File: VX017598.D
 Acq: 25 Jul 2020 16:00

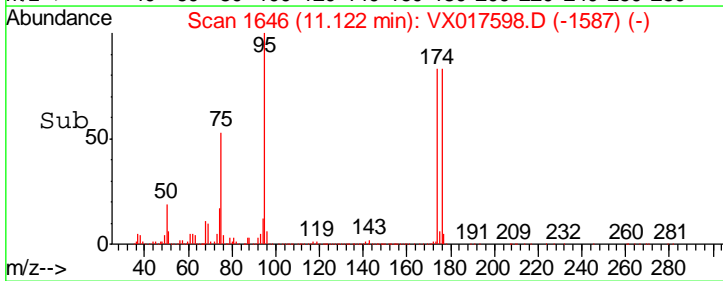
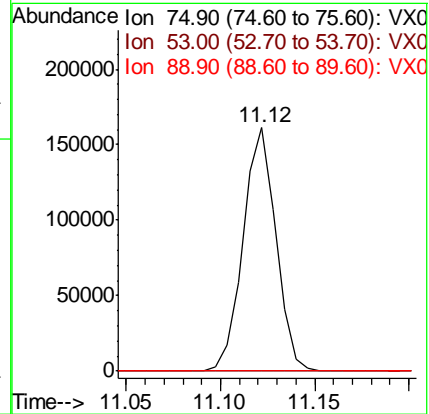
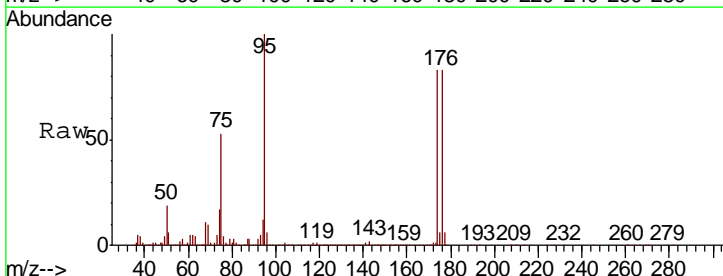
Instrument : MSVOA_X
 ClientSampled :

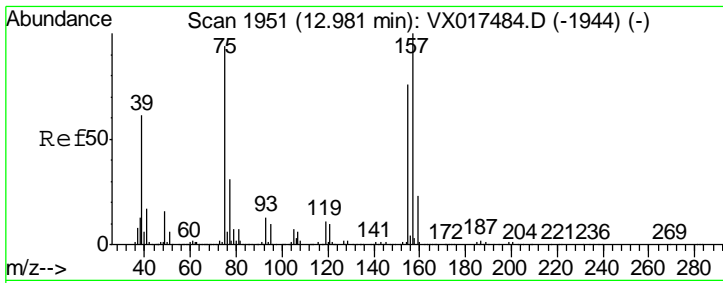
Tgt Ion	Resp	Lower	Upper
75	100		
77	1.1	21.8	65.3#



#81
 trans-1,4-Dichloro-2-butene
 Concen: 61.005 ug/l
 RT: 11.12 min Scan# 1646
 Delta R.T. 0.06 min
 Lab File: VX017598.D
 Acq: 25 Jul 2020 16:00

Tgt Ion	Resp	Lower	Upper
75	100		
53	0.1	75.9	113.9#
89	0.1	37.8	56.6#





#92
 1,2-Dibromo-3-Chloropropane
 Concen: 2.616 ug/l
 RT: 12.98 min Scan# 1951
 Delta R.T. 0.00 min
 Lab File: VX017598.D
 Acq: 25 Jul 2020 16:00

Instrument :
 MSVOA_X
 ClientSampled :

Tot Ion	75	Resp	97
Ion Ratio	Lower	Upper	
75	100		
155	20.6	42.3	126.8#
157	50.5	54.3	162.9#

