

Data Path : Z:\voasrv\HPCHEM1\MSVOA\_X\Data\VX072522\  
 Data File : VX030193.D  
 Acq On : 25 Jul 2022 15:07  
 Operator : JC/MD  
 Sample : IBLK  
 Misc : 5.0mL/MSVOA\_X/WATER  
 ALS Vial : 11 Sample Multiplier: 1

Instrument :  
 MSVOA\_X  
 ClientSampleId :  
 IBLK

Quant Time: Jul 25 17:07:56 2022  
 Quant Method : Z:\voasrv\HPCHEM1\MSVOA\_X\Method\82X072522W.M  
 Quant Title : SW846 8260  
 QLast Update : Mon Jul 25 16:49:17 2022  
 Response via : Initial Calibration

Compound	R.T.	QIon	Response	Conc	Units	Dev(Min)
-----						
Internal Standards						
1) Pentafluorobenzene	5.562	168	199511	50.000	ug/l	0.00
34) 1,4-Difluorobenzene	6.769	114	357902	50.000	ug/l	0.00
63) Chlorobenzene-d5	10.055	117	311323	50.000	ug/l	0.00
72) 1,4-Dichlorobenzene-d4	12.024	152	130606	50.000	ug/l	0.00
System Monitoring Compounds						
33) 1,2-Dichloroethane-d4	5.958	65	131639	32.827	ug/l	0.00
Spiked Amount	50.000	Range	74 - 125	Recovery	=	65.660%#
35) Dibromofluoromethane	5.391	113	108030	31.575	ug/l	0.00
Spiked Amount	50.000	Range	75 - 124	Recovery	=	63.160%#
50) Toluene-d8	8.653	98	415378	31.350	ug/l	0.00
Spiked Amount	50.000	Range	86 - 113	Recovery	=	62.700%#
62) 4-Bromofluorobenzene	11.085	95	139406	28.350	ug/l	0.00
Spiked Amount	50.000	Range	83 - 123	Recovery	=	56.700%#
Target Compounds						
						Qvalue
2) Dichlorodifluoromethane	1.167	85	718	0.219	ug/l	100
5) Bromomethane	1.618	94	928	Below Cal		98
9) 1,1,2-Trichlorotrifluo...	2.337	101	882	0.277	ug/l	89
10) Methyl Iodide	2.453	142	1049	1.852	ug/l #	86
11) Tert butyl alcohol	2.953	59	1776	1.816	ug/l #	74
12) 1,1-Dichloroethene	2.313	96	737	0.236	ug/l #	67
13) Acrolein	2.233	56	264	1.098	ug/l	86
14) Allyl chloride	2.654	41	1390	0.216	ug/l #	67
15) Acrylonitrile	3.075	53	1562	0.646	ug/l #	75
16) Acetone	2.386	43	1622	0.790	ug/l	98
17) Carbon Disulfide	2.514	76	7621	0.906	ug/l	98
20) Methylene Chloride	2.794	84	2360	Below Cal	#	84
21) trans-1,2-Dichloroethene	3.099	96	1465	0.426	ug/l #	72
23) Vinyl Acetate	3.733	43	2553	0.242	ug/l	96
25) 2-Butanone	4.574	43	1564	0.453	ug/l #	84
38) Carbon Tetrachloride	5.556	117	20432	4.445	ug/l #	17
44) Trichloroethene	7.123	130	1502	0.355	ug/l	69
49) 1,4-Dioxane	7.671	88	64	0.551	ug/l #	25
58) 2-Chloroethyl Vinyl ether	8.251	63	883	0.280	ug/l #	52
59) 2-Hexanone	9.433	43	1144	0.209	ug/l	88
64) Tetrachloroethene	9.275	164	1284	0.383	ug/l #	60
65) Chlorobenzene	10.086	112	1700	0.201	ug/l #	85
67) Ethyl Benzene	10.201	91	2455	Below Cal	#	75
68) m/p-Xylenes	10.305	106	1881	0.328	ug/l	87
73) Isopropylbenzene	10.970	105	2113	0.207	ug/l	97
76) 1,2,3-Trichloropropane	11.085	75	71292	20.708	ug/l #	38
77) Bromobenzene	11.201	156	749	0.313	ug/l	83
78) n-propylbenzene	11.311	91	3909	0.321	ug/l	93
79) 2-Chlorotoluene	11.366	91	2138	0.278	ug/l	87
80) 1,3,5-Trimethylbenzene	11.457	105	2083	0.244	ug/l	88
81) trans-1,4-Dichloro-2-b...	11.085	75	71292	62.123	ug/l #	13
82) 4-Chlorotoluene	11.457	91	3613	0.430	ug/l	95
83) tert-Butylbenzene	11.719	119	1705	0.215	ug/l	71
84) 1,2,4-Trimethylbenzene	11.756	105	2224	0.261	ug/l	89
85) sec-Butylbenzene	11.896	105	3111	0.287	ug/l	99
86) p-Isopropyltoluene	12.012	119	2660	0.307	ug/l #	84

Data Path : Z:\voasrv\HPCHEM1\MSVOA\_X\Data\VX072522\  
 Data File : VX030193.D  
 Acq On : 25 Jul 2022 15:07  
 Operator : JC/MD  
 Sample : IBLK  
 Misc : 5.0mL/MSVOA\_X/WATER  
 ALS Vial : 11 Sample Multiplier: 1

Instrument :  
 MSVOA\_X  
 ClientSampleId :  
 IBLK

Quant Time: Jul 25 17:07:56 2022  
 Quant Method : Z:\voasrv\HPCHEM1\MSVOA\_X\Method\82X072522W.M  
 Quant Title : SW846 8260  
 QLast Update : Mon Jul 25 16:49:17 2022  
 Response via : Initial Calibration

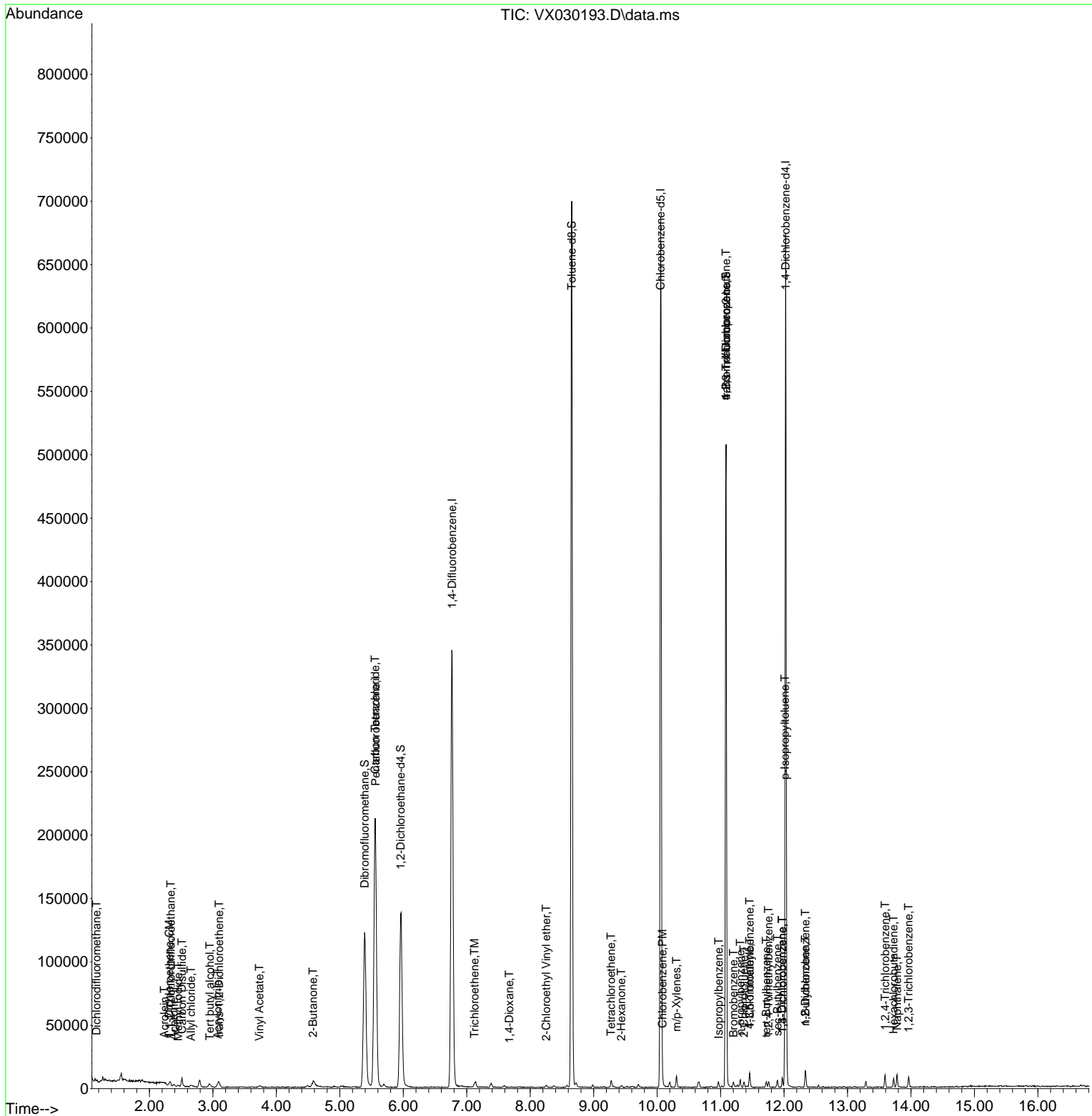
Compound	R.T.	QIon	Response	Conc	Units	Dev(Min)
87) 1,3-Dichlorobenzene	11.969	146	2343	0.503	ug/l	98
88) 1,4-Dichlorobenzene	11.969	146	2343	0.495	ug/l	97
89) n-Butylbenzene	12.335	91	3662	0.454	ug/l	94
91) 1,2-Dichlorobenzene	12.335	146	1822	0.399	ug/l	92
93) 1,2,4-Trichlorobenzene	13.591	180	2096	0.791	ug/l	78
94) Hexachlorobutadiene	13.725	225	927	0.871	ug/l	92
95) Naphthalene	13.780	128	6823	0.659	ug/l	99
96) 1,2,3-Trichlorobenzene	13.963	180	1847	0.680	ug/l	83

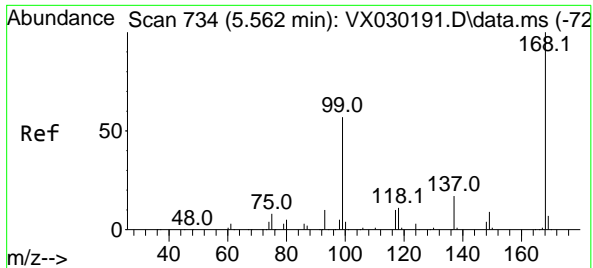
(#) = qualifier out of range (m) = manual integration (+) = signals summed

Data Path : Z:\voasrv\HPCHEM1\MSVOA\_X\Data\VX072522\  
 Data File : VX030193.D  
 Acq On : 25 Jul 2022 15:07  
 Operator : JC/MD  
 Sample : IBLK  
 Misc : 5.0mL/MSVOA\_X/WATER  
 ALS Vial : 11 Sample Multiplier: 1

Instrument :  
 MSVOA\_X  
 ClientSampleId :  
 IBLK

Quant Time: Jul 25 17:07:56 2022  
 Quant Method : Z:\voasrv\HPCHEM1\MSVOA\_X\Method\82X072522W.M  
 Quant Title : SW846 8260  
 QLast Update : Mon Jul 25 16:49:17 2022  
 Response via : Initial Calibration

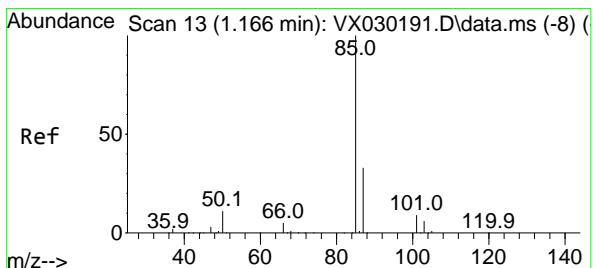
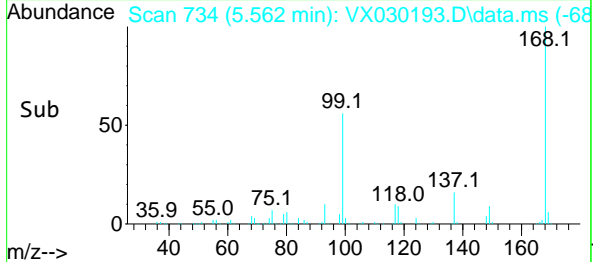
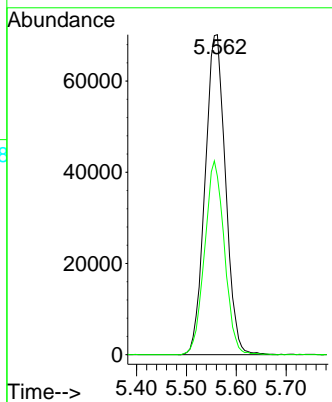
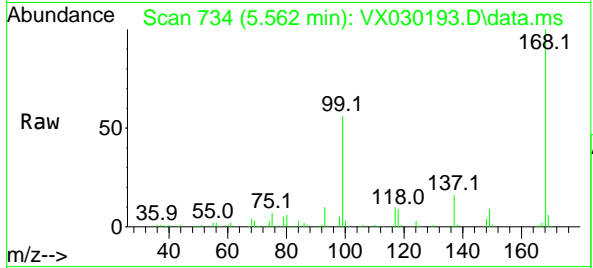




#1  
 Pentafluorobenzene  
 Concen: 50.000 ug/l  
 RT: 5.562 min Scan# 71  
 Delta R.T. 0.000 min  
 Lab File: VX030193.D  
 Acq: 25 Jul 2022 15:07

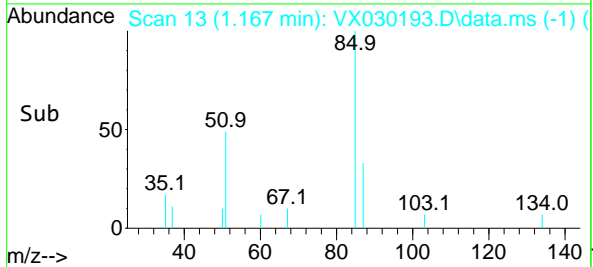
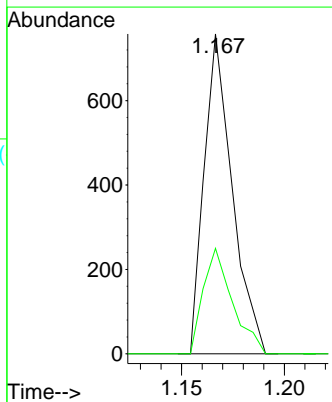
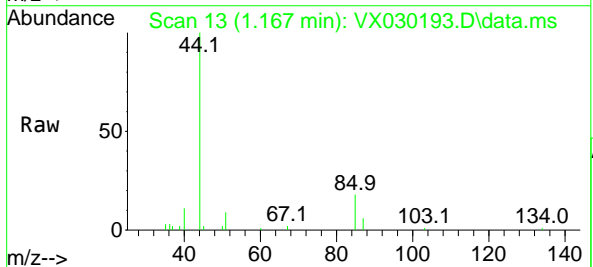
Instrument : MSVOA\_X  
 ClientSampleId : IBLK

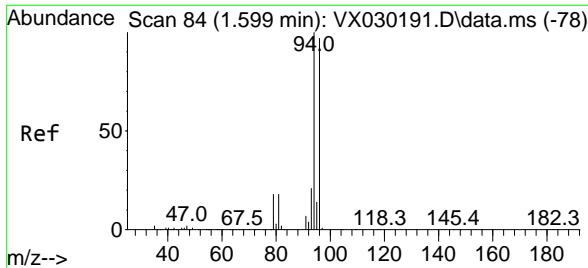
Tgt Ion:168 Resp: 199511  
 Ion Ratio Lower Upper  
 168 100  
 99 55.7 44.0 66.0



#2  
 Dichlorodifluoromethane  
 Concen: 0.219 ug/l  
 RT: 1.167 min Scan# 13  
 Delta R.T. 0.001 min  
 Lab File: VX030193.D  
 Acq: 25 Jul 2022 15:07

Tgt Ion: 85 Resp: 718  
 Ion Ratio Lower Upper  
 85 100  
 87 33.0 16.5 49.5

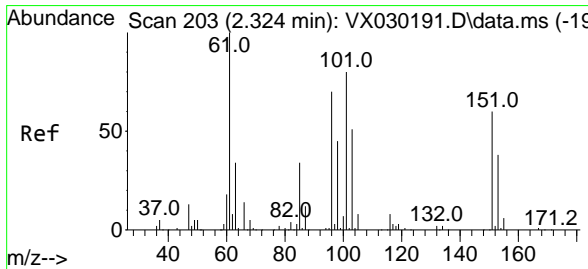
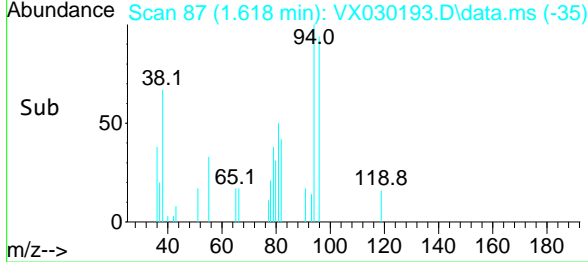
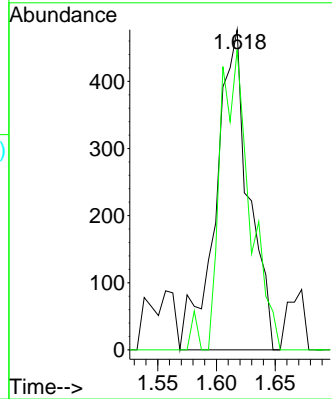
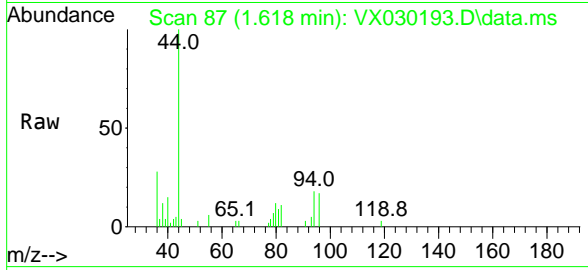




#5  
 Bromomethane  
 Concen: Below Cal  
 RT: 1.618 min Scan# 81  
 Delta R.T. 0.019 min  
 Lab File: VX030193.D  
 Acq: 25 Jul 2022 15:07

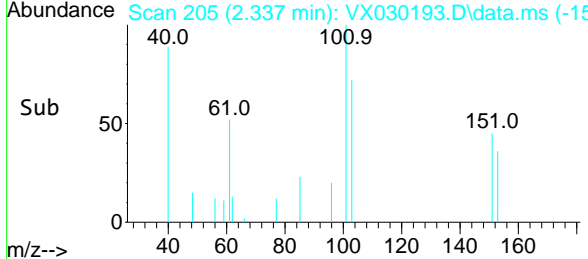
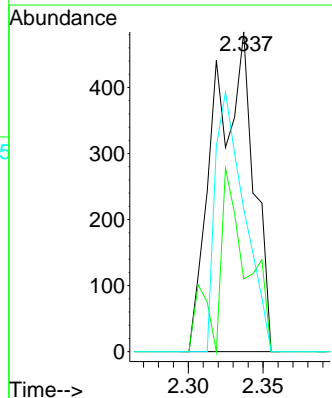
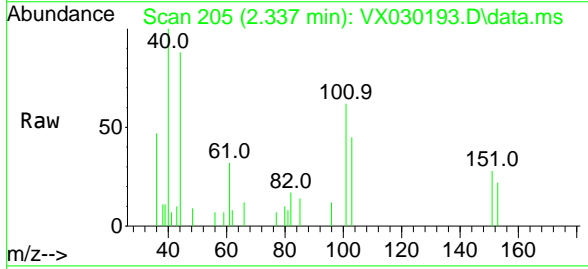
Instrument : MSVOA\_X  
 ClientSampleId : IBLK

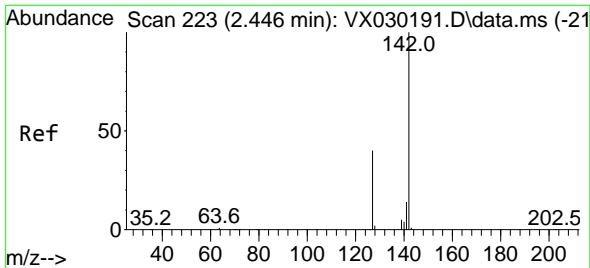
Tgt Ion: 94 Resp: 928  
 Ion Ratio Lower Upper  
 94 100  
 96 93.7 76.9 115.3



#9  
 1,1,2-Trichlorotrifluoroethane  
 Concen: 0.277 ug/l  
 RT: 2.337 min Scan# 205  
 Delta R.T. 0.013 min  
 Lab File: VX030193.D  
 Acq: 25 Jul 2022 15:07

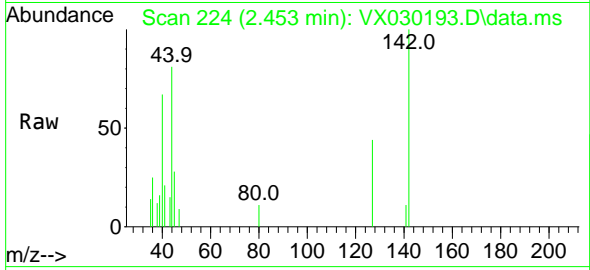
Tgt Ion: 101 Resp: 882  
 Ion Ratio Lower Upper  
 101 100  
 85 42.7 34.0 51.0  
 151 60.2 59.4 89.0



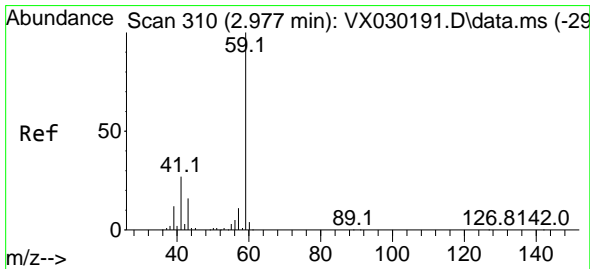
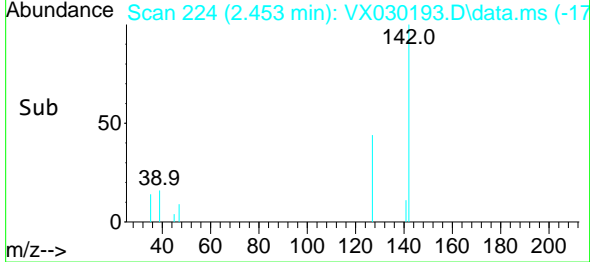
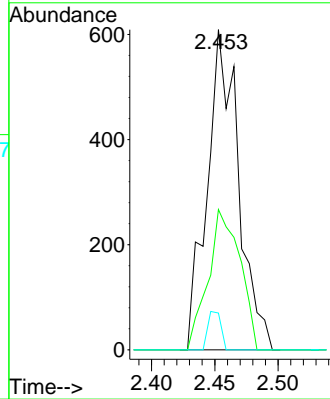


#10  
Methyl Iodide  
Concen: 1.852 ug/l  
RT: 2.453 min Scan# 21  
Delta R.T. 0.007 min  
Lab File: VX030193.D  
Acq: 25 Jul 2022 15:07

Instrument : MSVOA\_X  
ClientSampleId : IBLK

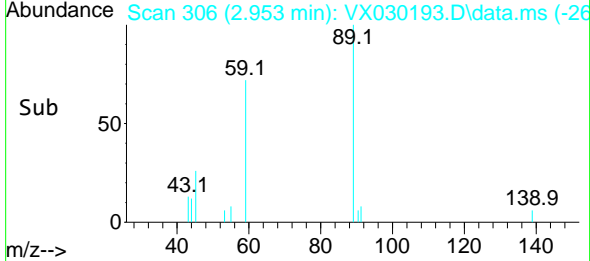
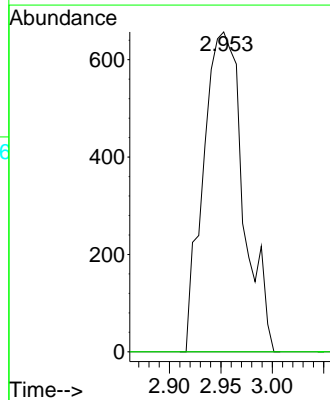
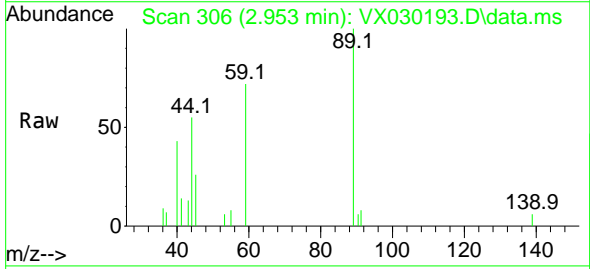


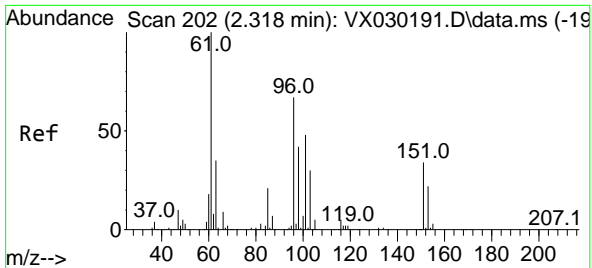
Tgt Ion:142 Resp: 1049  
Ion Ratio Lower Upper  
142 100  
127 44.5 30.2 45.2  
141 5.0 11.3 16.9#



#11  
Tert butyl alcohol  
Concen: 1.816 ug/l  
RT: 2.953 min Scan# 306  
Delta R.T. -0.024 min  
Lab File: VX030193.D  
Acq: 25 Jul 2022 15:07

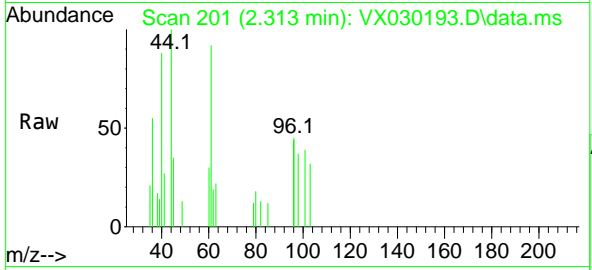
Tgt Ion: 59 Resp: 1776  
Ion Ratio Lower Upper  
59 100  
57 0.0 7.4 11.2#





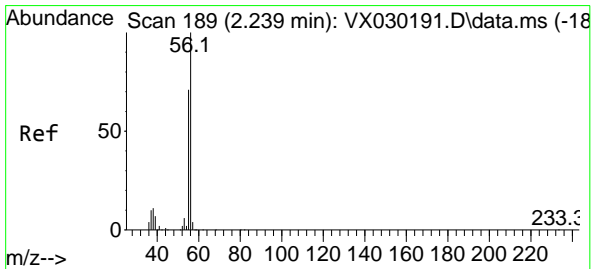
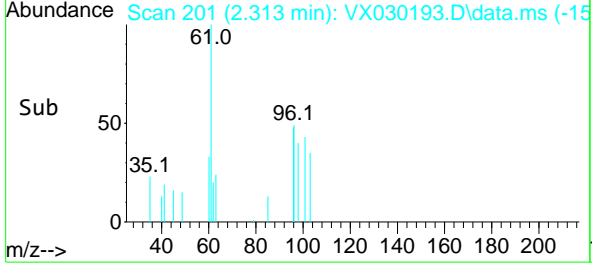
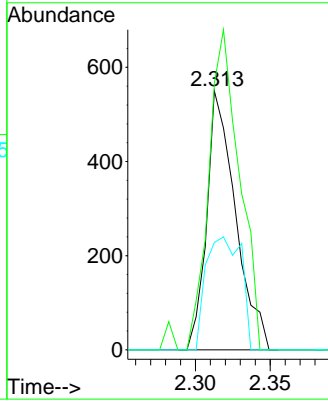
#12  
 1,1-Dichloroethene  
 Concen: 0.236 ug/l  
 RT: 2.313 min Scan# 201  
 Delta R.T. -0.005 min  
 Lab File: VX030193.D  
 Acq: 25 Jul 2022 15:07

Instrument : MSVOA\_X  
 ClientSampleId : IBLK



Tgt Ion: 96 Resp: 737

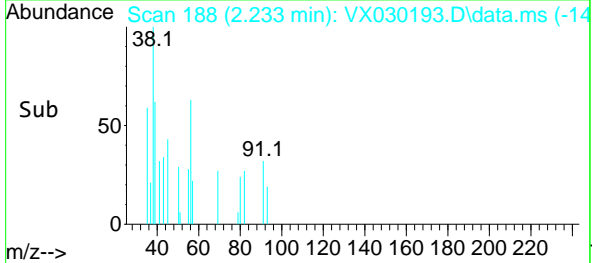
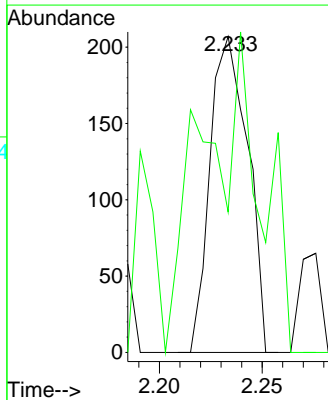
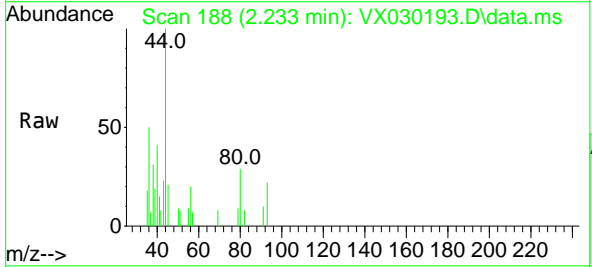
Ion	Ratio	Lower	Upper
96	100		
61	102.9	117.4	176.0#
98	41.5	52.2	78.4#

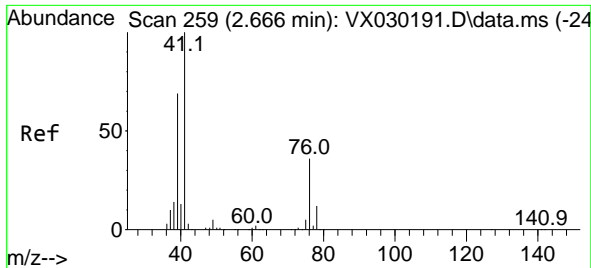


#13  
 Acrolein  
 Concen: 1.098 ug/l  
 RT: 2.233 min Scan# 188  
 Delta R.T. -0.006 min  
 Lab File: VX030193.D  
 Acq: 25 Jul 2022 15:07

Tgt Ion: 56 Resp: 264

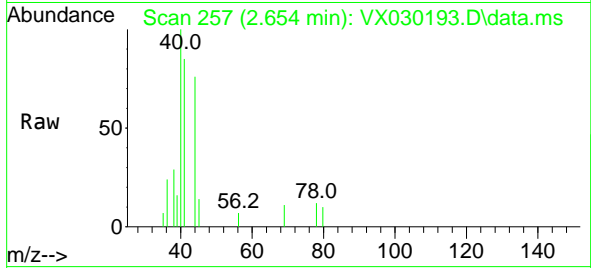
Ion	Ratio	Lower	Upper
56	100		
55	82.2	56.6	84.8





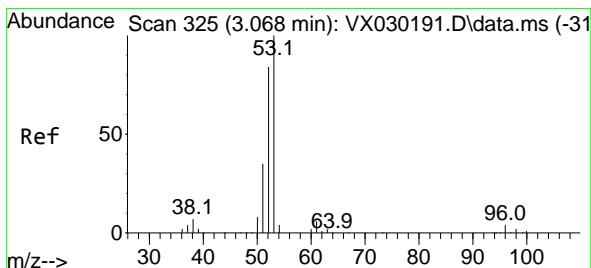
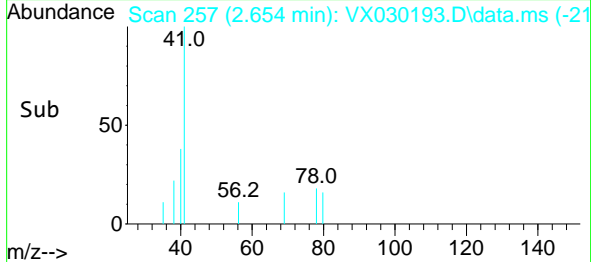
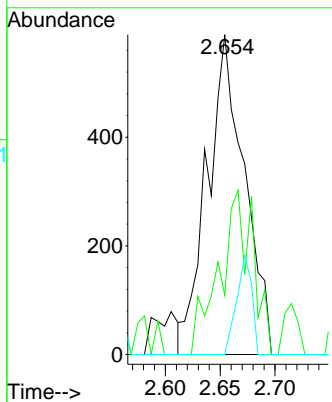
#14  
 Allyl chloride  
 Concen: 0.216 ug/l  
 RT: 2.654 min Scan# 21  
 Delta R.T. -0.012 min  
 Lab File: VX030193.D  
 Acq: 25 Jul 2022 15:07

Instrument :  
 MSVOA\_X  
 ClientSampleId :  
 IBLK



Tgt Ion: 41 Resp: 1390

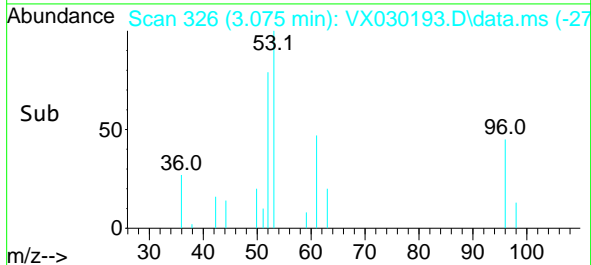
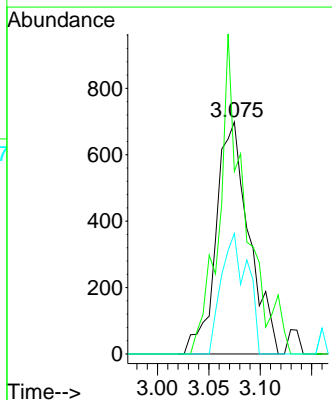
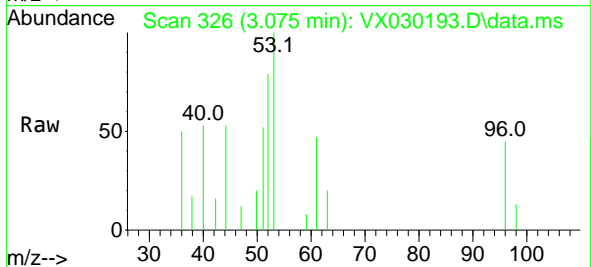
Ion	Ratio	Lower	Upper
41	100		
39	46.4	48.9	73.3#
76	0.0	26.9	40.3#



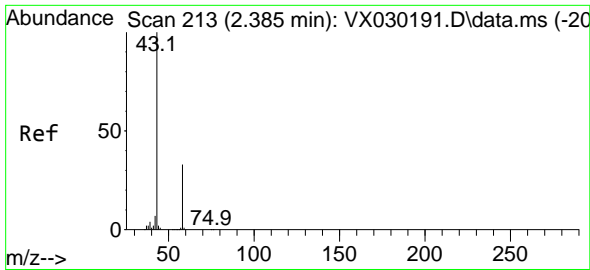
#15  
 Acrylonitrile  
 Concen: 0.646 ug/l  
 RT: 3.075 min Scan# 326  
 Delta R.T. 0.007 min  
 Lab File: VX030193.D  
 Acq: 25 Jul 2022 15:07

Tgt Ion: 53 Resp: 1562

Ion	Ratio	Lower	Upper
53	100		
52	109.5	65.4	98.0#
51	41.1	27.7	41.5

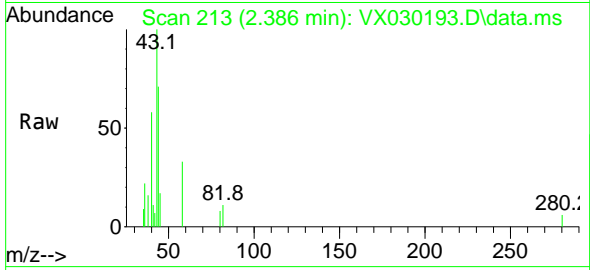




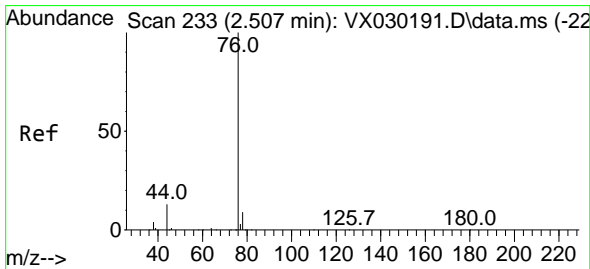
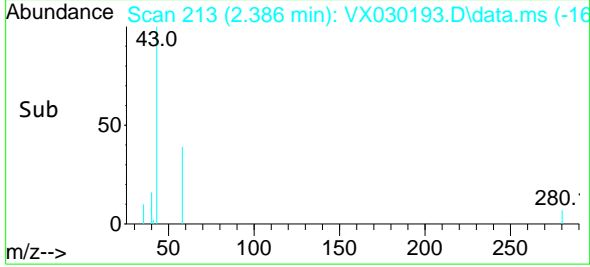
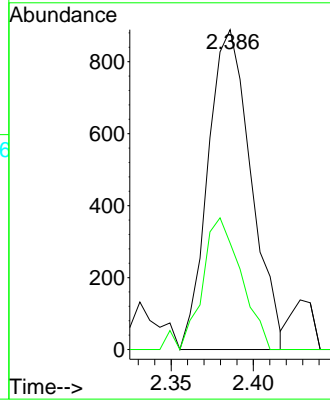


#16  
 Acetone  
 Concen: 0.790 ug/l  
 RT: 2.386 min Scan# 213  
 Delta R.T. 0.001 min  
 Lab File: VX030193.D  
 Acq: 25 Jul 2022 15:07

Instrument :  
 MSVOA\_X  
 ClientSampleId :  
 IBLK

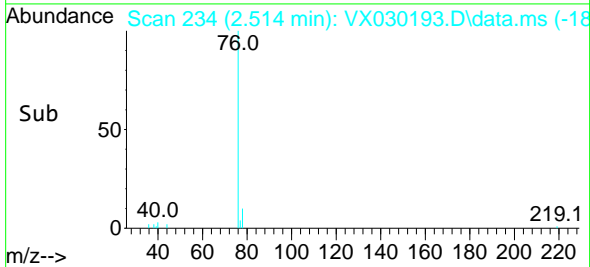
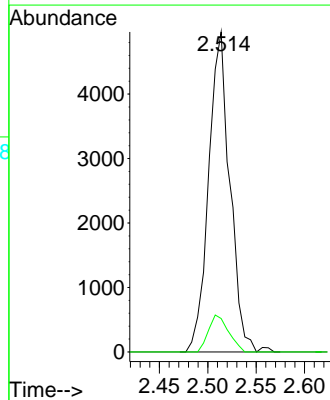
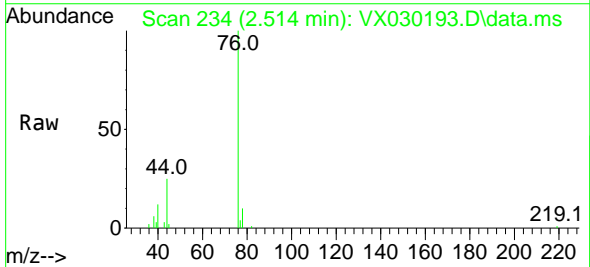


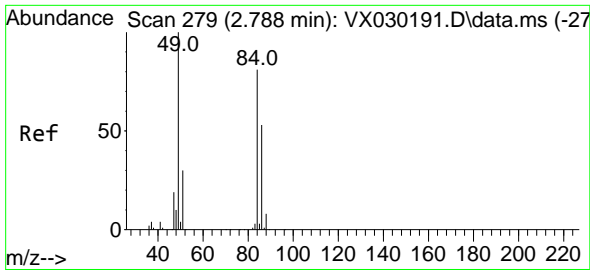
Tgt Ion: 43 Resp: 1622  
 Ion Ratio Lower Upper  
 43 100  
 58 33.3 27.7 41.5



#17  
 Carbon Disulfide  
 Concen: 0.906 ug/l  
 RT: 2.514 min Scan# 234  
 Delta R.T. 0.007 min  
 Lab File: VX030193.D  
 Acq: 25 Jul 2022 15:07

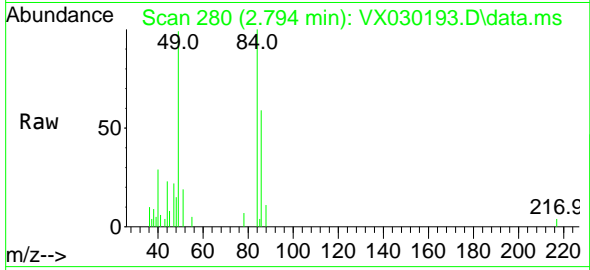
Tgt Ion: 76 Resp: 7621  
 Ion Ratio Lower Upper  
 76 100  
 78 10.4 7.8 11.6



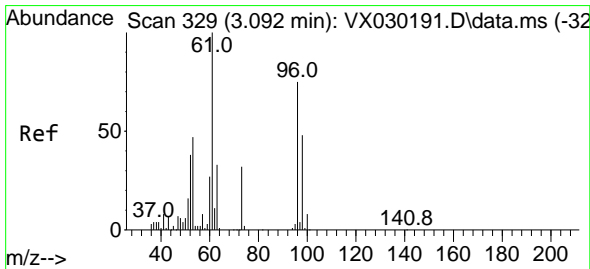
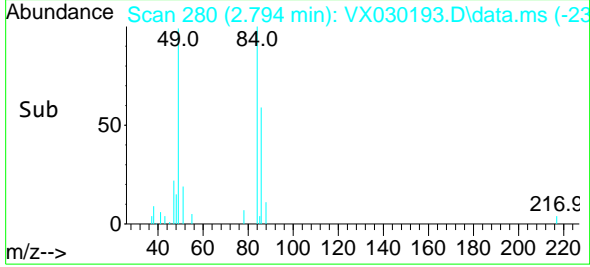
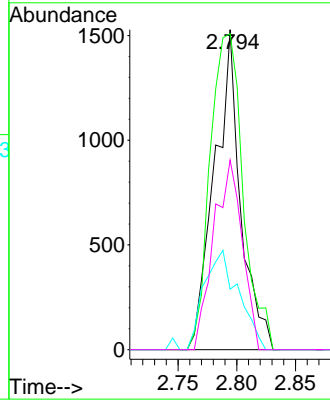


#20  
Methylene Chloride  
Concen: Below Cal  
RT: 2.794 min Scan# 21  
Delta R.T. 0.006 min  
Lab File: VX030193.D  
Acq: 25 Jul 2022 15:07

Instrument :  
MSVOA\_X  
ClientSampleId :  
IBLK

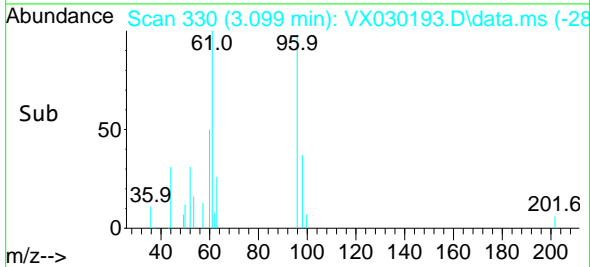
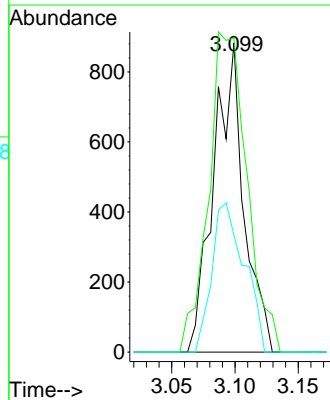
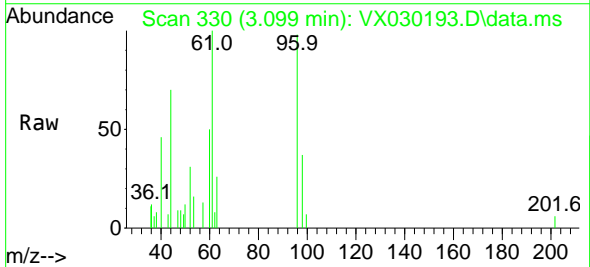


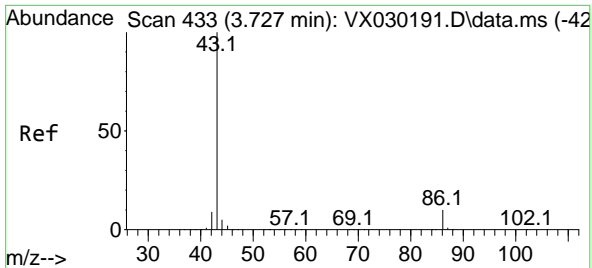
Tgt Ion: 84 Resp: 2360  
Ion Ratio Lower Upper  
84 100  
49 98.8 93.8 140.6  
51 18.9 29.4 44.0#  
86 59.2 51.0 76.4



#21  
trans-1,2-Dichloroethene  
Concen: 0.426 ug/l  
RT: 3.099 min Scan# 330  
Delta R.T. 0.007 min  
Lab File: VX030193.D  
Acq: 25 Jul 2022 15:07

Tgt Ion: 96 Resp: 1465  
Ion Ratio Lower Upper  
96 100  
61 101.6 105.6 158.4#  
98 37.8 50.1 75.1#

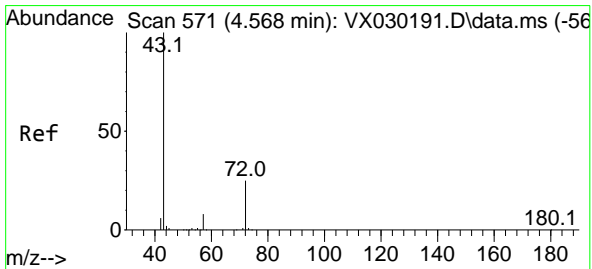
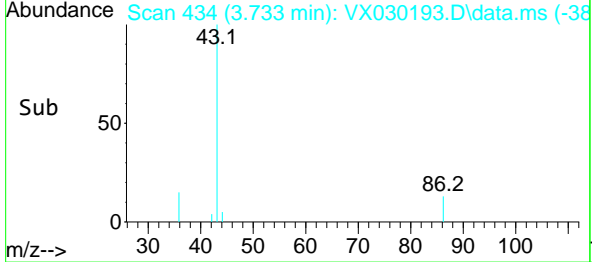
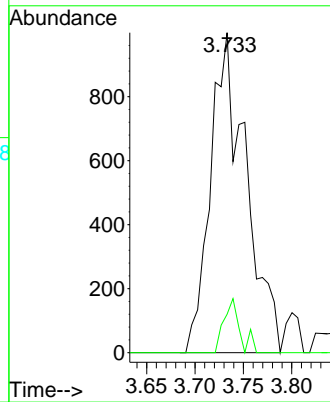
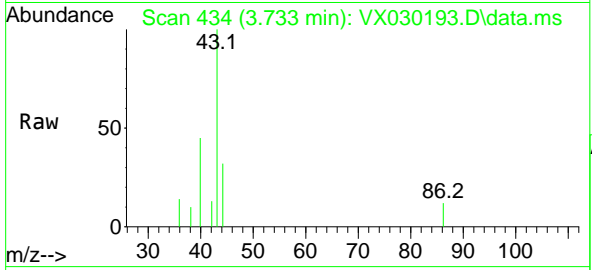




#23  
 Vinyl Acetate  
 Concen: 0.242 ug/l  
 RT: 3.733 min Scan# 41  
 Delta R.T. 0.006 min  
 Lab File: VX030193.D  
 Acq: 25 Jul 2022 15:07

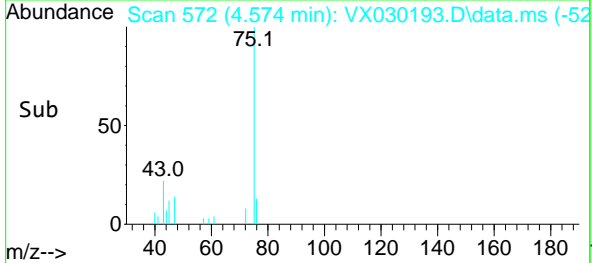
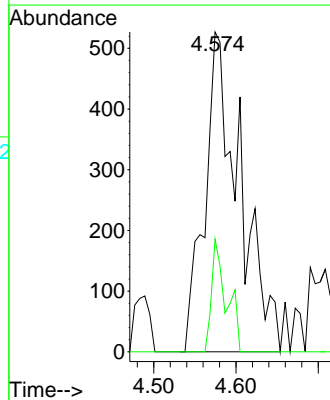
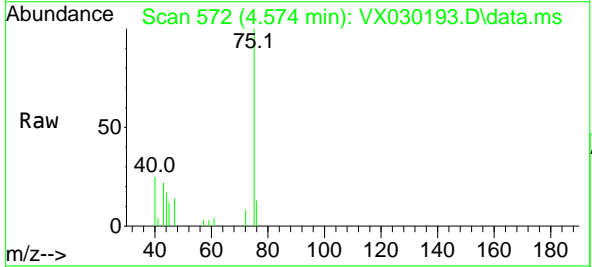
Instrument : MSVOA\_X  
 ClientSampleId : IBLK

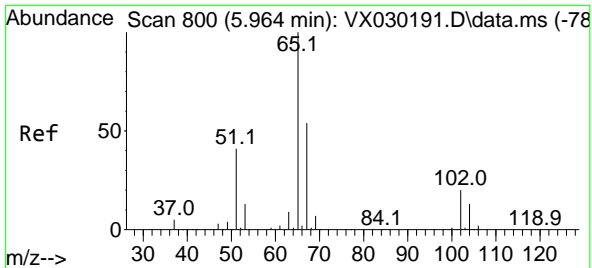
Tgt Ion: 43 Resp: 2553  
 Ion Ratio Lower Upper  
 43 100  
 86 12.0 8.5 12.7



#25  
 2-Butanone  
 Concen: 0.453 ug/l  
 RT: 4.574 min Scan# 572  
 Delta R.T. 0.006 min  
 Lab File: VX030193.D  
 Acq: 25 Jul 2022 15:07

Tgt Ion: 43 Resp: 1564  
 Ion Ratio Lower Upper  
 43 100  
 72 35.3 21.7 32.5#

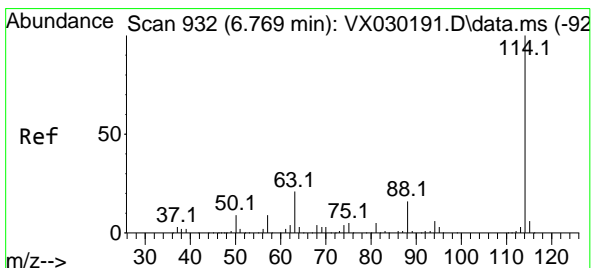
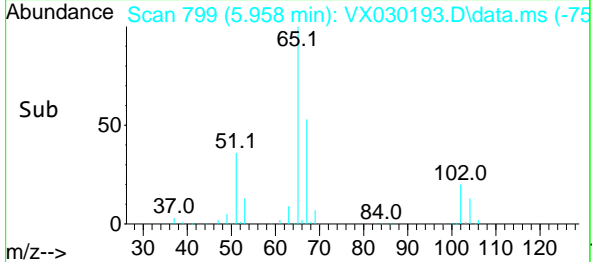
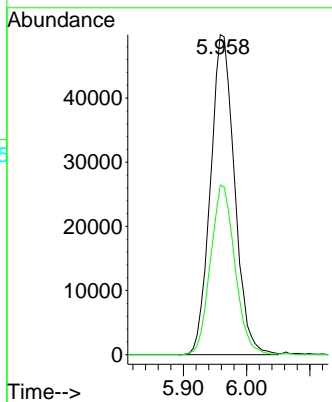
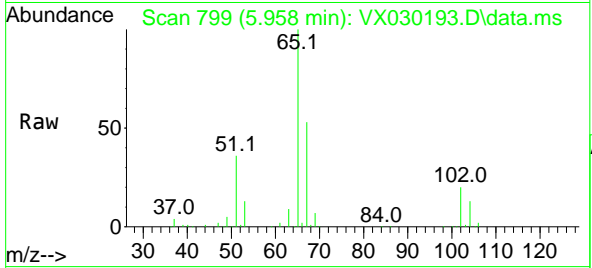




#33  
 1,2-Dichloroethane-d4  
 Concen: 32.827 ug/l  
 RT: 5.958 min Scan# 799  
 Delta R.T. -0.006 min  
 Lab File: VX030193.D  
 Acq: 25 Jul 2022 15:07

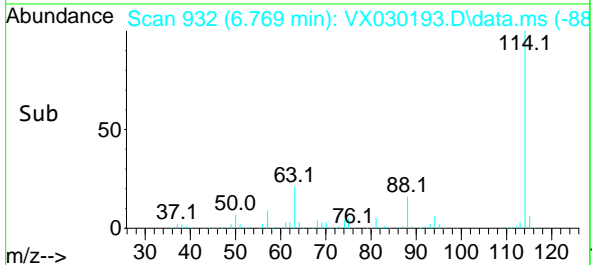
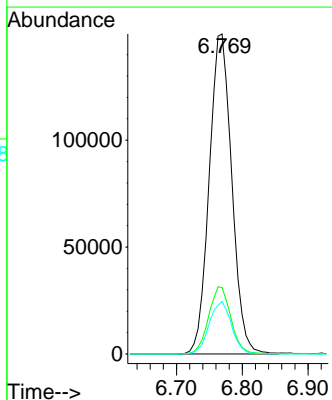
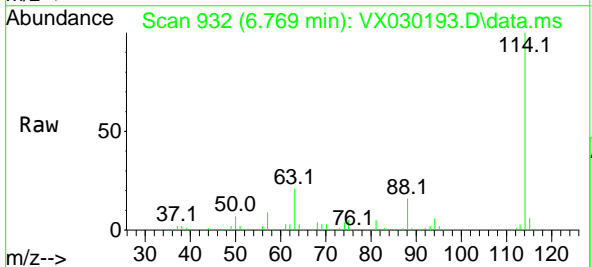
Instrument :  
 MSVOA\_X  
 ClientSampleId :  
 IBLK

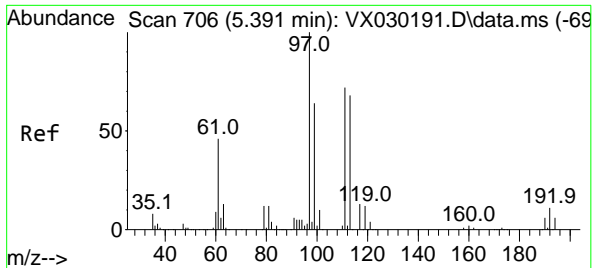
Tgt Ion: 65 Resp: 131639  
 Ion Ratio Lower Upper  
 65 100  
 67 53.7 0.0 109.6



#34  
 1,4-Difluorobenzene  
 Concen: 50.000 ug/l  
 RT: 6.769 min Scan# 932  
 Delta R.T. 0.000 min  
 Lab File: VX030193.D  
 Acq: 25 Jul 2022 15:07

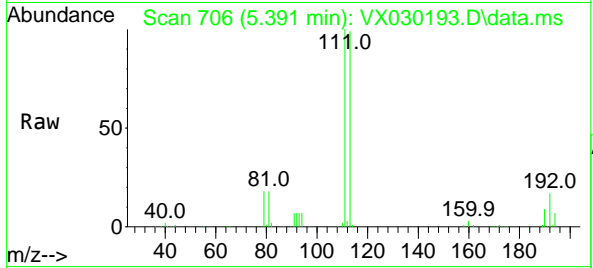
Tgt Ion:114 Resp: 357902  
 Ion Ratio Lower Upper  
 114 100  
 63 20.8 0.0 38.4  
 88 16.4 0.0 31.8





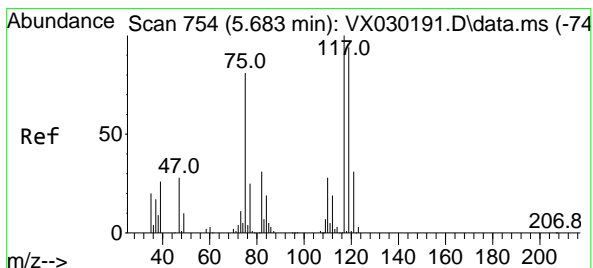
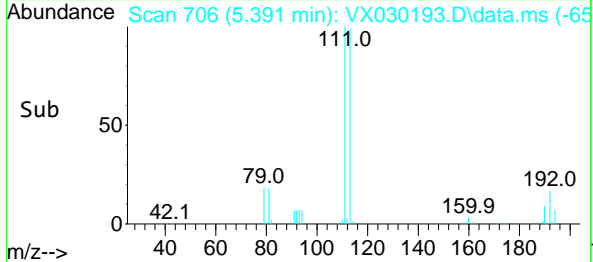
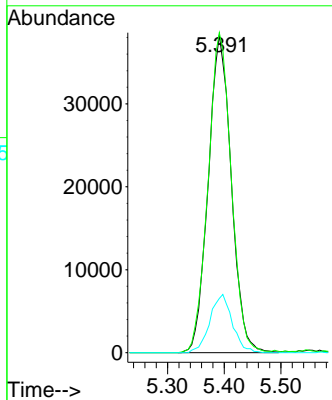
#35  
 Dibromofluoromethane  
 Concen: 31.575 ug/l  
 RT: 5.391 min Scan# 706  
 Delta R.T. 0.000 min  
 Lab File: VX030193.D  
 Acq: 25 Jul 2022 15:07

Instrument : MSVOA\_X  
 ClientSampleId : IBLK



Tgt Ion:113 Resp: 108030

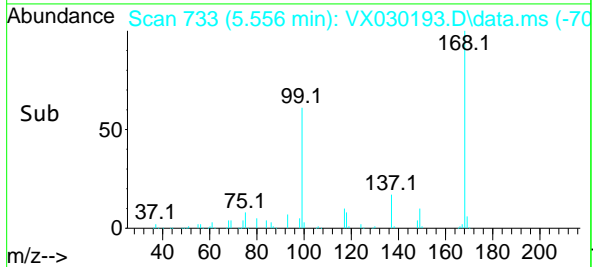
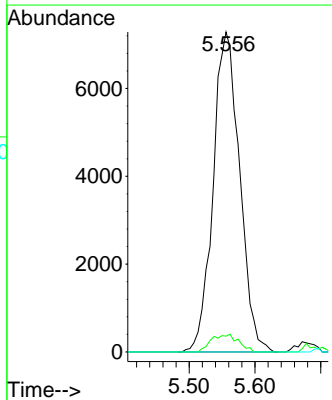
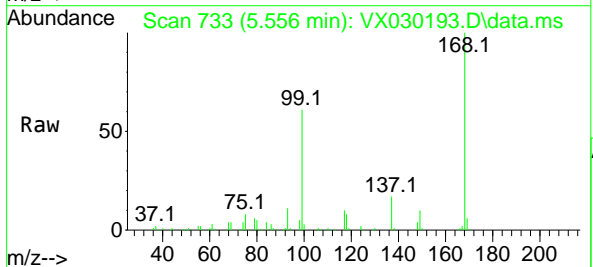
Ion	Ratio	Lower	Upper
113	100		
111	101.4	83.2	124.8
192	17.8	14.8	22.2

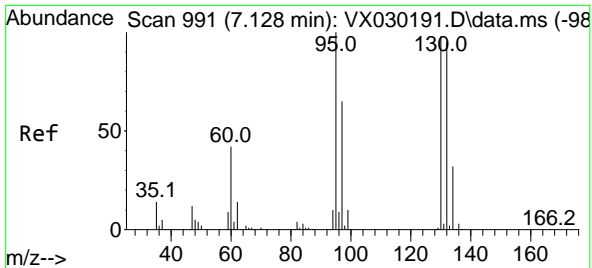


#38  
 Carbon Tetrachloride  
 Concen: 4.445 ug/l  
 RT: 5.556 min Scan# 733  
 Delta R.T. -0.127 min  
 Lab File: VX030193.D  
 Acq: 25 Jul 2022 15:07

Tgt Ion:117 Resp: 20432

Ion	Ratio	Lower	Upper
117	100		
119	5.0	74.1	111.1#
121	0.0	25.8	38.8#

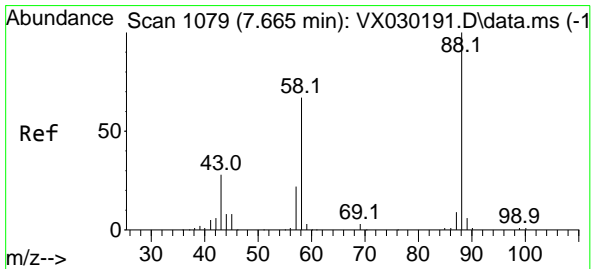
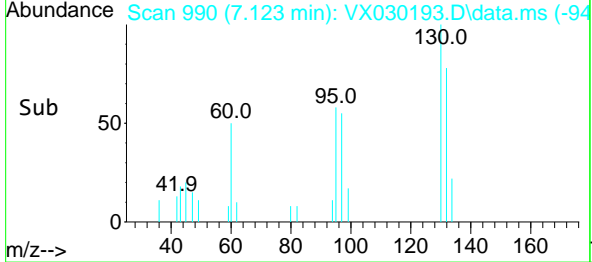
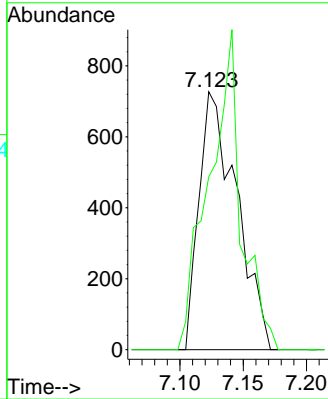
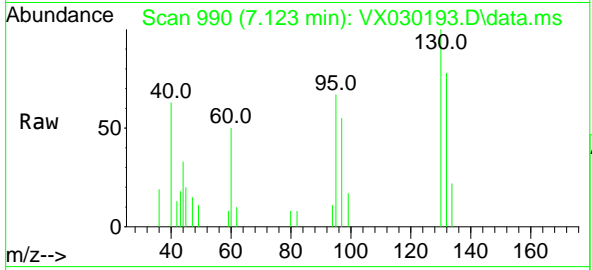




#44  
 Trichloroethene  
 Concen: 0.355 ug/l  
 RT: 7.123 min Scan# 94  
 Delta R.T. -0.005 min  
 Lab File: VX030193.D  
 Acq: 25 Jul 2022 15:07

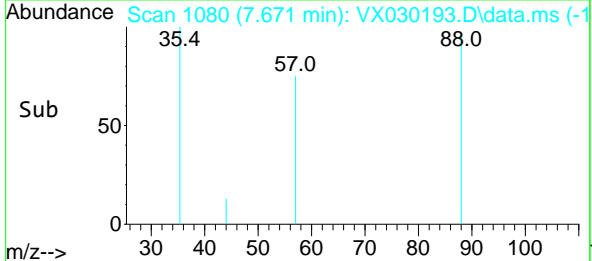
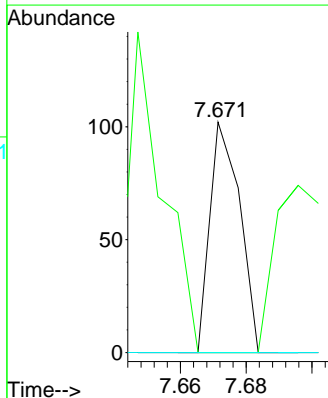
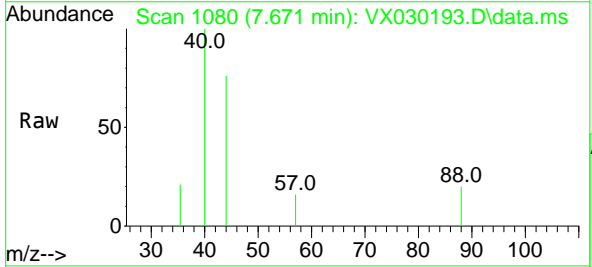
Instrument : MSVOA\_X  
 ClientSampleId : IBLK

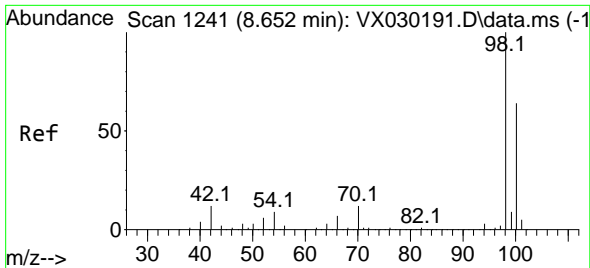
Tgt Ion:130 Resp: 1502  
 Ion Ratio Lower Upper  
 130 100  
 95 67.0 0.0 194.8



#49  
 1,4-Dioxane  
 Concen: 0.551 ug/l  
 RT: 7.671 min Scan# 1080  
 Delta R.T. 0.006 min  
 Lab File: VX030193.D  
 Acq: 25 Jul 2022 15:07

Tgt Ion: 88 Resp: 64  
 Ion Ratio Lower Upper  
 88 100  
 43 0.0 23.8 35.8#  
 58 0.0 53.8 80.6#

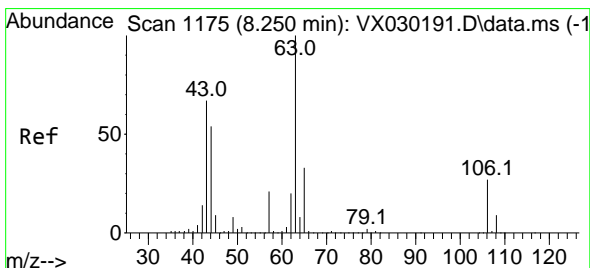
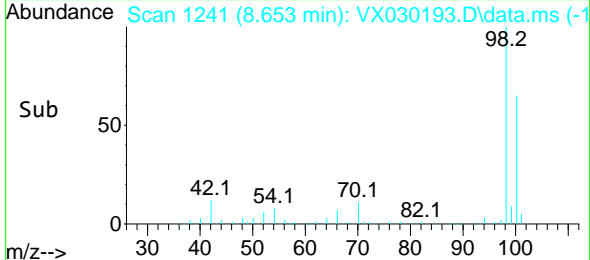
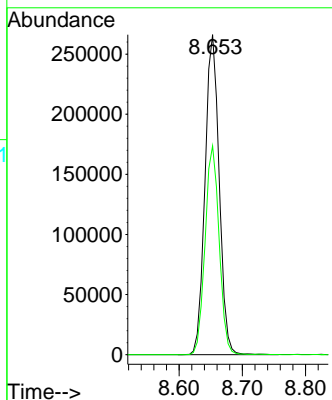
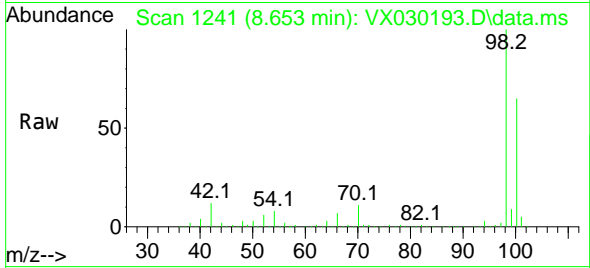




#50  
 Toluene-d8  
 Concen: 31.350 ug/l  
 RT: 8.653 min Scan# 1175  
 Delta R.T. 0.001 min  
 Lab File: VX030193.D  
 Acq: 25 Jul 2022 15:07

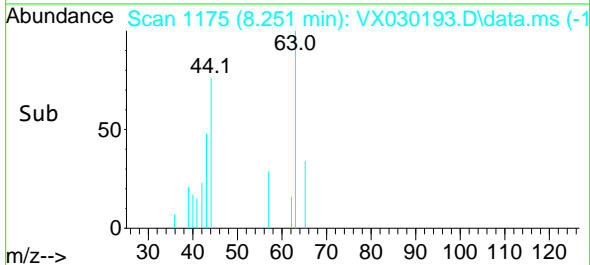
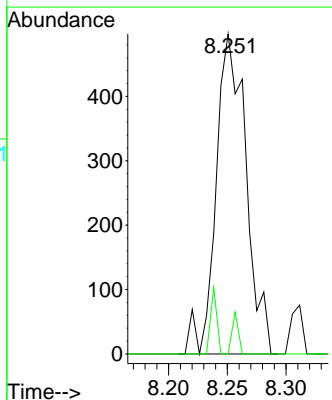
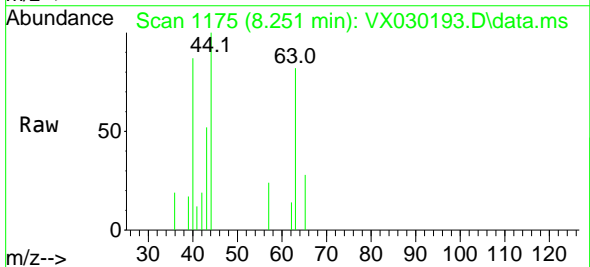
Instrument :  
 MSVOA\_X  
 ClientSampleId :  
 IBLK

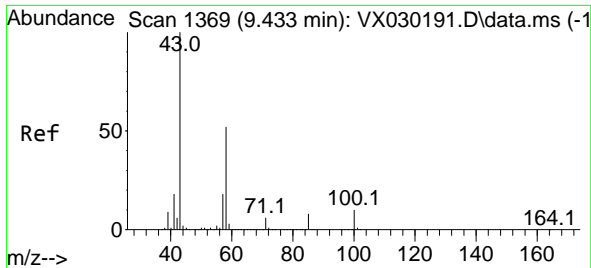
Tgt Ion: 98 Resp: 415378  
 Ion Ratio Lower Upper  
 98 100  
 100 64.7 52.3 78.5



#58  
 2-Chloroethyl Vinyl ether  
 Concen: 0.280 ug/l  
 RT: 8.251 min Scan# 1175  
 Delta R.T. 0.001 min  
 Lab File: VX030193.D  
 Acq: 25 Jul 2022 15:07

Tgt Ion: 63 Resp: 883  
 Ion Ratio Lower Upper  
 63 100  
 106 2.7 22.2 33.2#

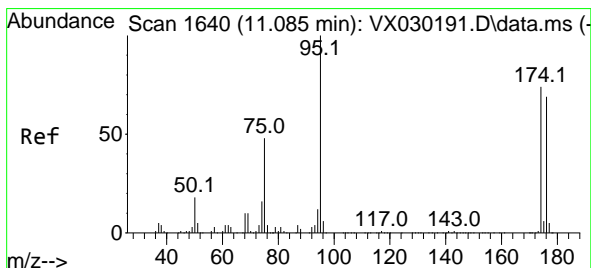
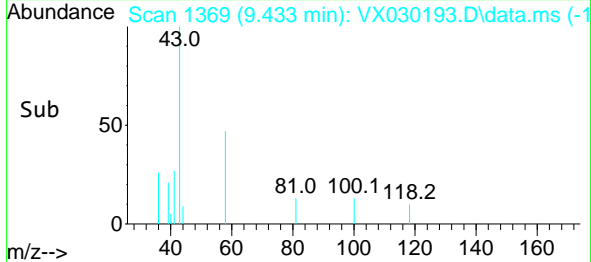
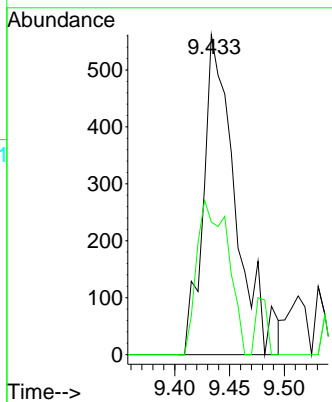
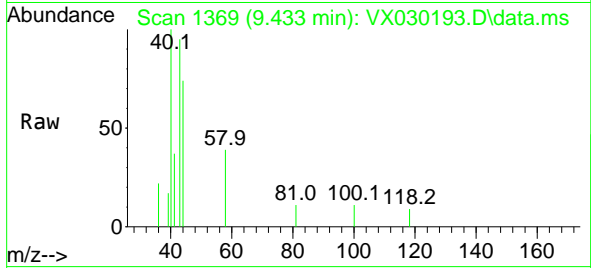




#59  
 2-Hexanone  
 Concen: 0.209 ug/l  
 RT: 9.433 min Scan# 11  
 Delta R.T. 0.000 min  
 Lab File: VX030193.D  
 Acq: 25 Jul 2022 15:07

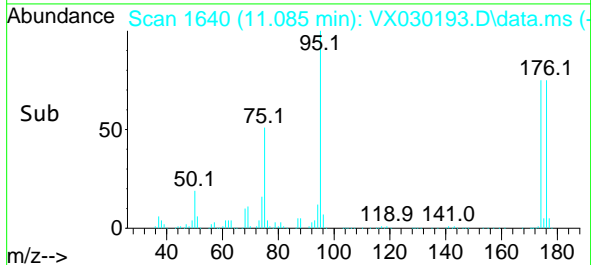
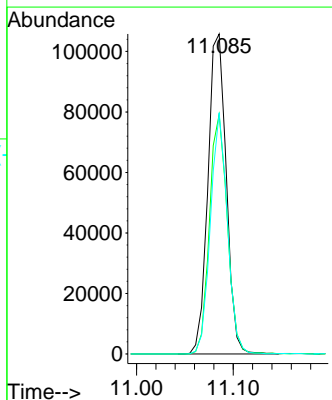
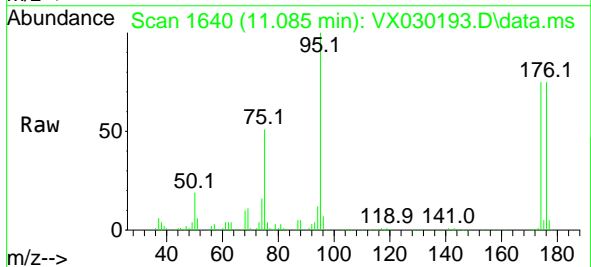
Instrument : MSVOA\_X  
 ClientSampleId : IBLK

Tgt Ion: 43 Resp: 1144  
 Ion Ratio Lower Upper  
 43 100  
 58 46.9 27.6 82.8

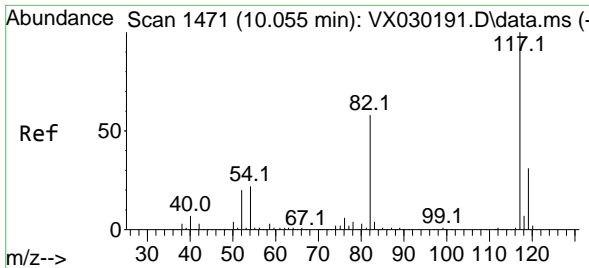


#62  
 4-Bromofluorobenzene  
 Concen: 28.350 ug/l  
 RT: 11.085 min Scan# 1640  
 Delta R.T. 0.000 min  
 Lab File: VX030193.D  
 Acq: 25 Jul 2022 15:07

Tgt Ion: 95 Resp: 139406  
 Ion Ratio Lower Upper  
 95 100  
 174 72.8 0.0 149.0  
 176 69.6 0.0 146.0





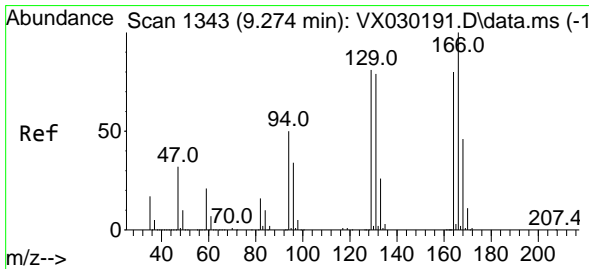
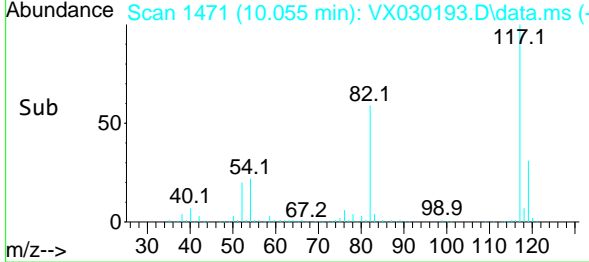
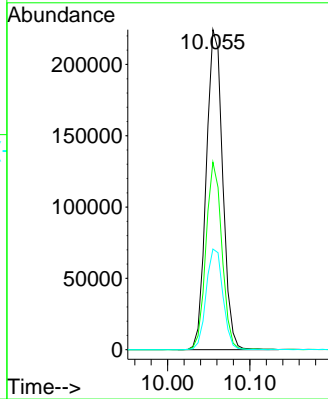
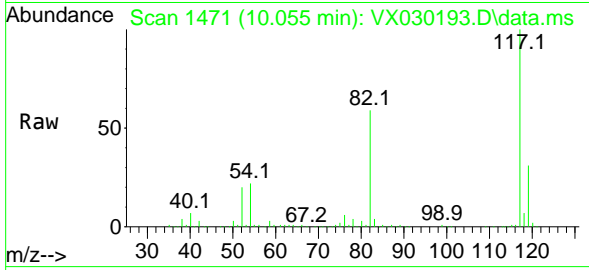


#63  
 Chlorobenzene-d5  
 Concen: 50.000 ug/l  
 RT: 10.055 min Scan# 1471  
 Delta R.T. 0.000 min  
 Lab File: VX030193.D  
 Acq: 25 Jul 2022 15:07

Instrument : MSVOA\_X  
 ClientSampleId : IBLK

Tgt Ion:117 Resp: 311323

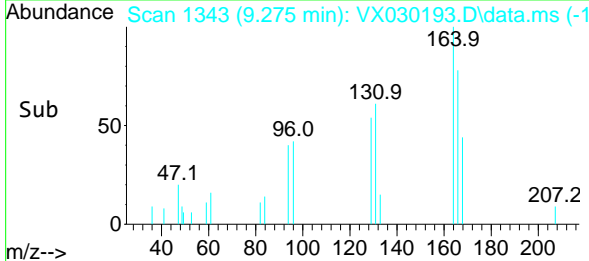
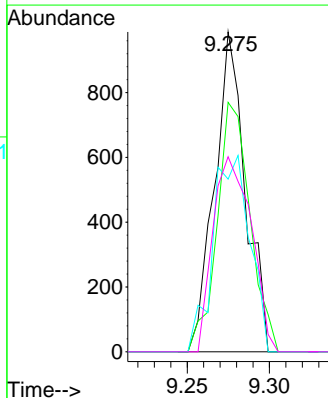
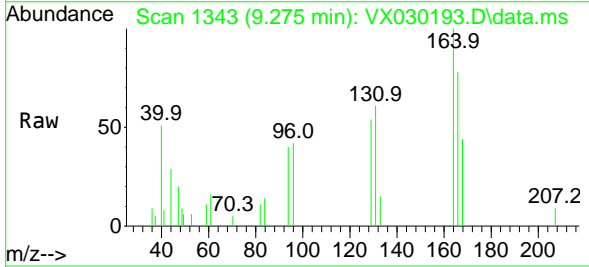
Ion	Ratio	Lower	Upper
117	100		
82	58.6	42.7	64.1
119	31.5	25.4	38.2

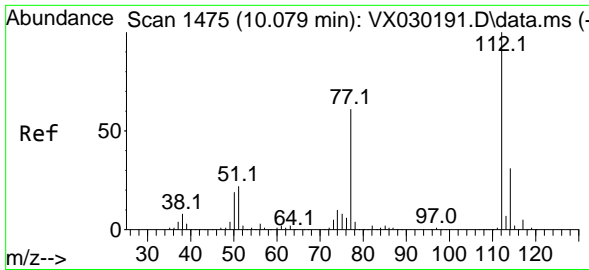


#64  
 Tetrachloroethene  
 Concen: 0.383 ug/l  
 RT: 9.275 min Scan# 1343  
 Delta R.T. 0.001 min  
 Lab File: VX030193.D  
 Acq: 25 Jul 2022 15:07

Tgt Ion:164 Resp: 1284

Ion	Ratio	Lower	Upper
164	100		
166	78.0	98.2	147.4#
129	54.0	80.8	121.2#
131	61.0	75.5	113.3#

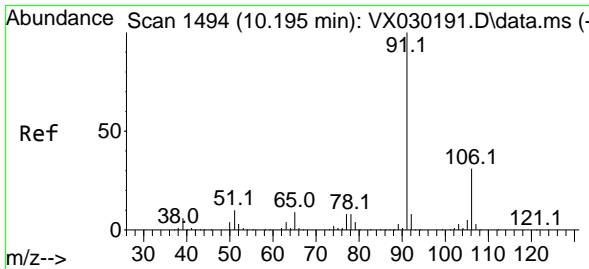
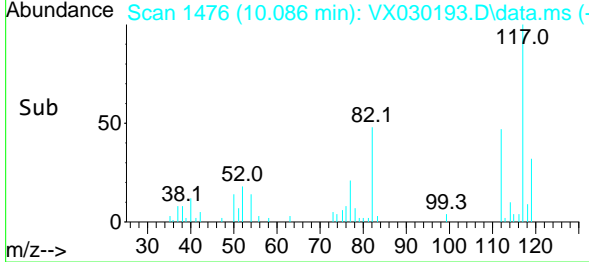
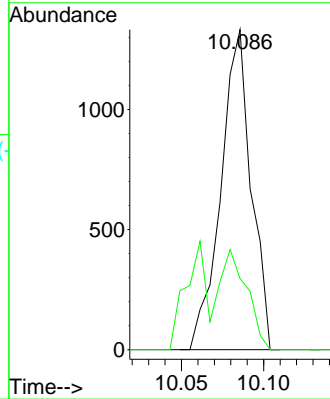
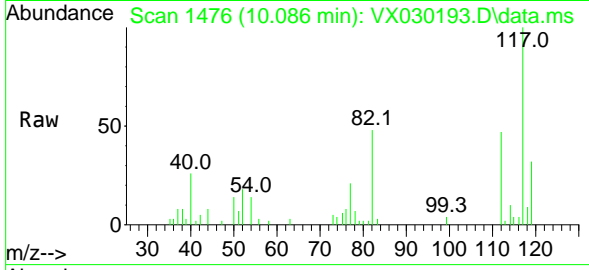




#65  
 Chlorobenzene  
 Concen: 0.201 ug/l  
 RT: 10.086 min Scan# 1476  
 Delta R.T. 0.007 min  
 Lab File: VX030193.D  
 Acq: 25 Jul 2022 15:07

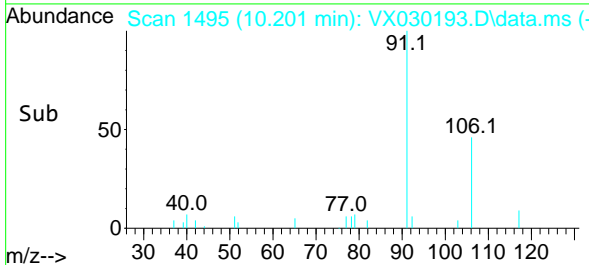
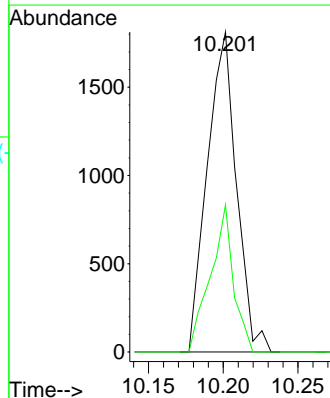
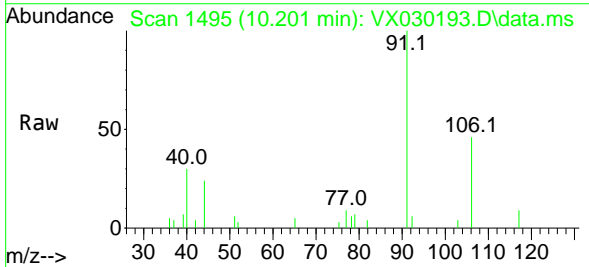
Instrument :  
 MSVOA\_X  
 ClientSampleId :  
 IBLK

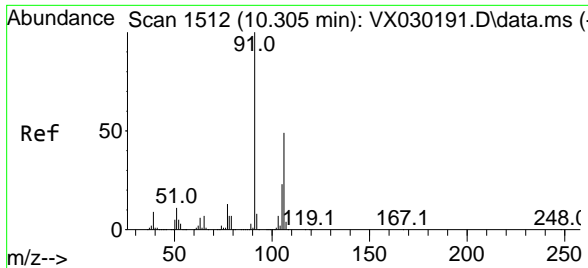
Tgt Ion:112 Resp: 1700  
 Ion Ratio Lower Upper  
 112 100  
 114 22.2 24.6 36.8#



#67  
 Ethyl Benzene  
 Concen: Below Cal  
 RT: 10.201 min Scan# 1495  
 Delta R.T. 0.006 min  
 Lab File: VX030193.D  
 Acq: 25 Jul 2022 15:07

Tgt Ion: 91 Resp: 2455  
 Ion Ratio Lower Upper  
 91 100  
 106 45.9 25.5 38.3#

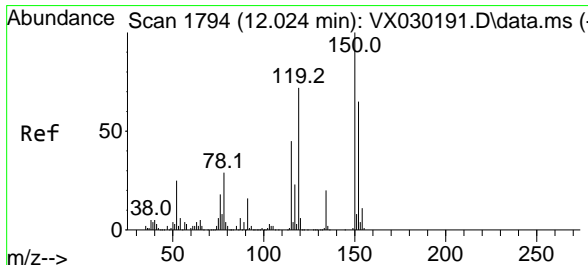
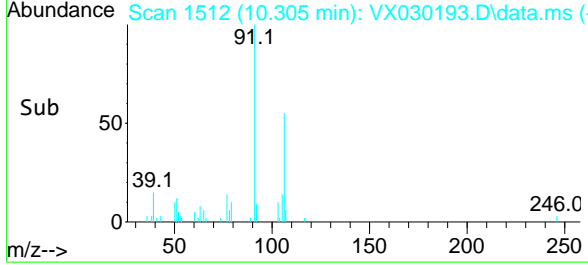
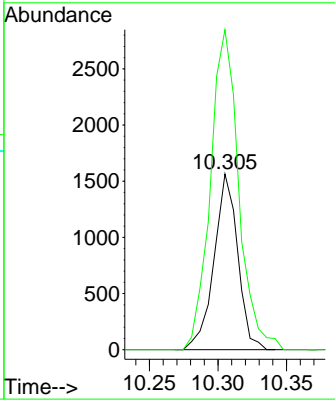
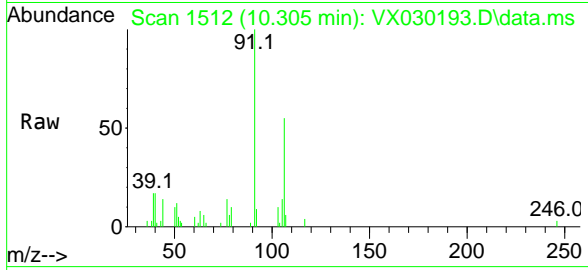




#68  
 m/p-Xylenes  
 Concen: 0.328 ug/l  
 RT: 10.305 min Scan# 1512  
 Delta R.T. 0.000 min  
 Lab File: VX030193.D  
 Acq: 25 Jul 2022 15:07

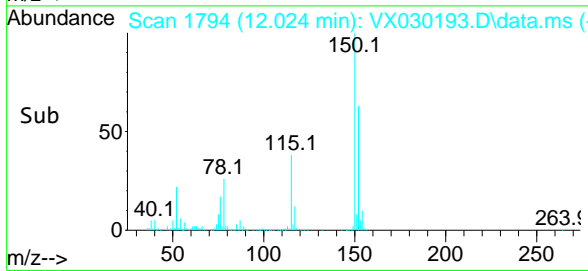
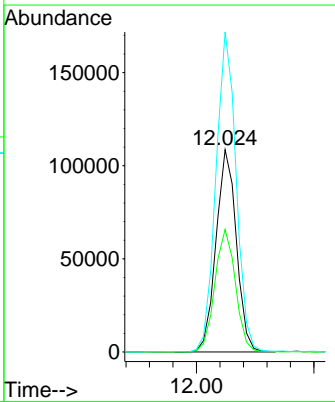
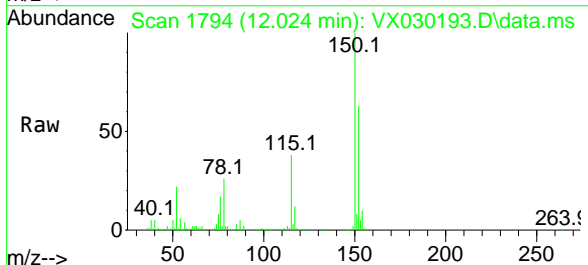
Instrument : MSVOA\_X  
 ClientSampleId : IBLK

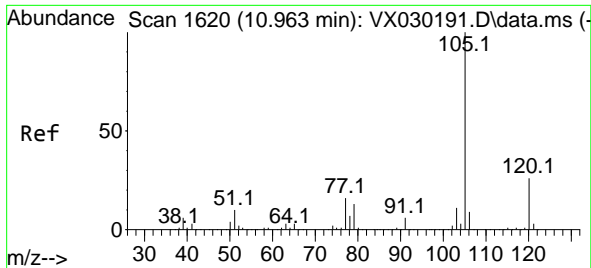
Tgt Ion:106 Resp: 1881  
 Ion Ratio Lower Upper  
 106 100  
 91 217.7 158.2 237.4



#72  
 1,4-Dichlorobenzene-d4  
 Concen: 50.000 ug/l  
 RT: 12.024 min Scan# 1794  
 Delta R.T. 0.000 min  
 Lab File: VX030193.D  
 Acq: 25 Jul 2022 15:07

Tgt Ion:152 Resp: 130606  
 Ion Ratio Lower Upper  
 152 100  
 115 61.4 40.5 121.5  
 150 158.0 0.0 347.0

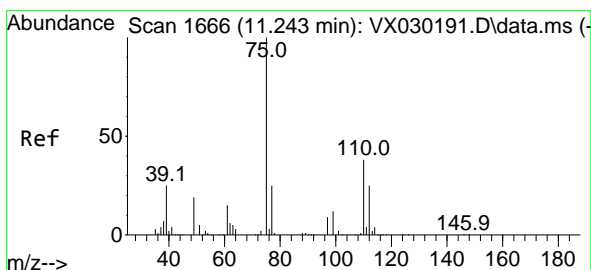
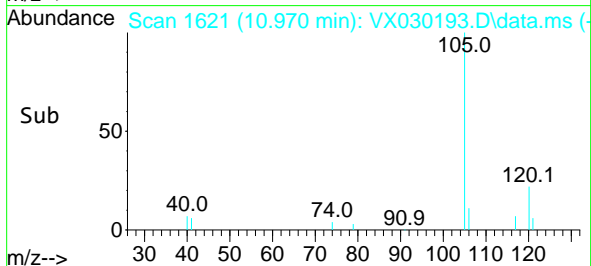
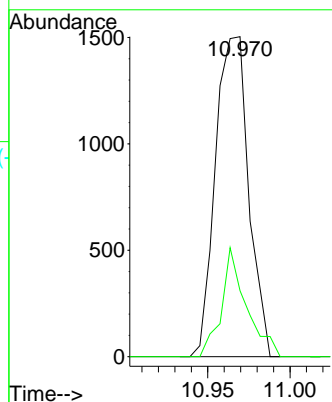
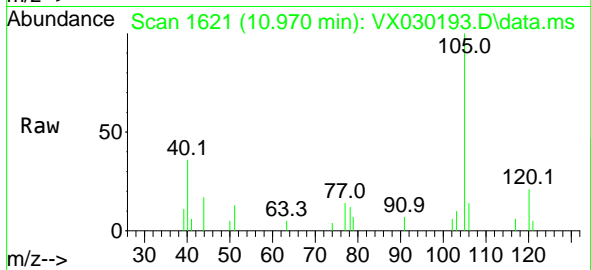




#73  
 Isopropylbenzene  
 Concen: 0.207 ug/l  
 RT: 10.970 min Scan# 1640  
 Delta R.T. 0.007 min  
 Lab File: VX030193.D  
 Acq: 25 Jul 2022 15:07

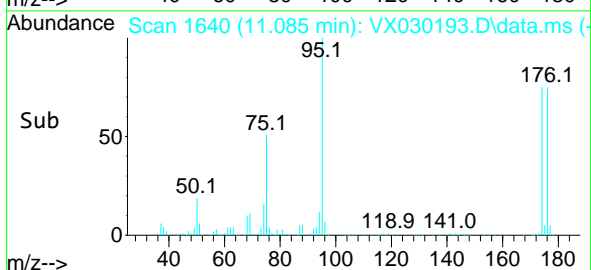
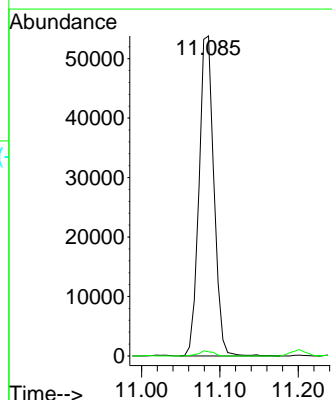
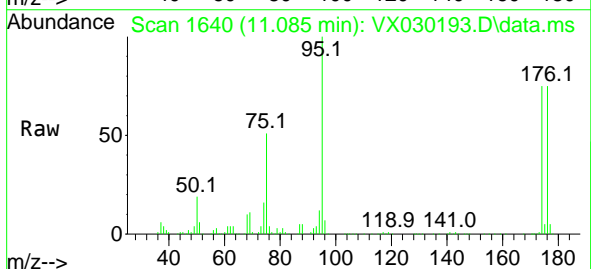
Instrument : MSVOA\_X  
 ClientSampleId : IBLK

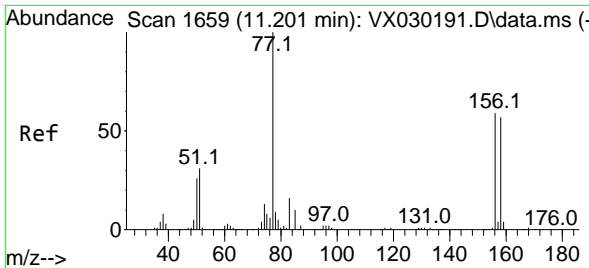
Tgt Ion: 105 Resp: 2113  
 Ion Ratio Lower Upper  
 105 100  
 120 25.4 13.5 40.4



#76  
 1,2,3-Trichloropropane  
 Concen: 20.708 ug/l  
 RT: 11.085 min Scan# 1640  
 Delta R.T. -0.158 min  
 Lab File: VX030193.D  
 Acq: 25 Jul 2022 15:07

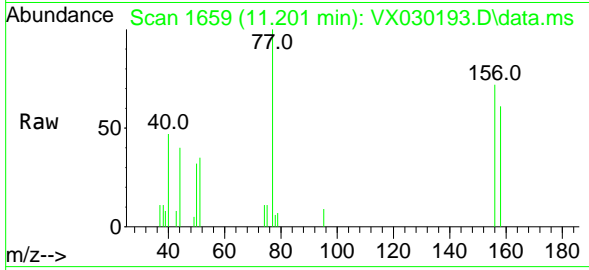
Tgt Ion: 75 Resp: 71292  
 Ion Ratio Lower Upper  
 75 100  
 77 1.6 19.8 59.3#



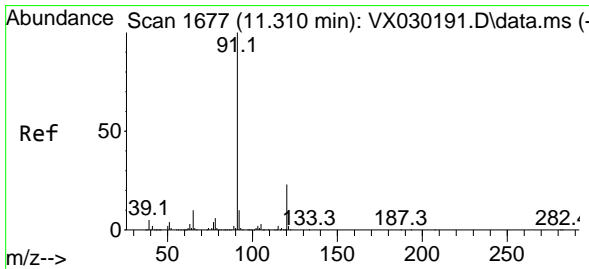
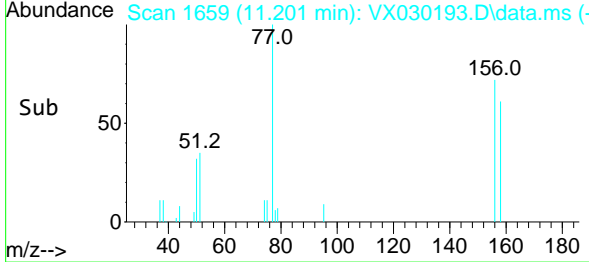
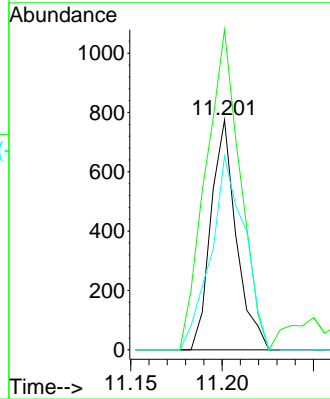


#77  
 Bromobenzene  
 Concen: 0.313 ug/l  
 RT: 11.201 min Scan# 1659  
 Delta R.T. 0.000 min  
 Lab File: VX030193.D  
 Acq: 25 Jul 2022 15:07

Instrument : MSVOA\_X  
 ClientSampleId : IBLK

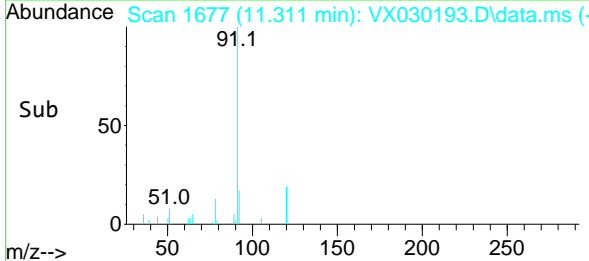
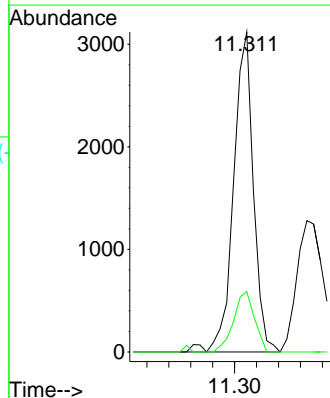
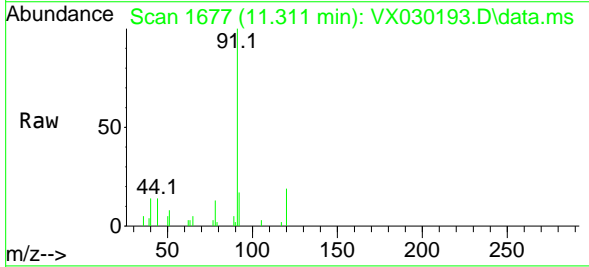


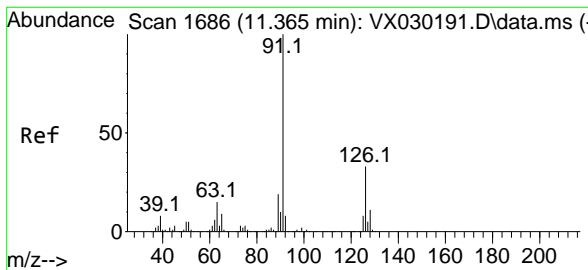
Tgt Ion:156	Resp:	749
Ion Ratio	Lower	Upper
156	100	
77	188.1	82.7 247.9
158	112.7	47.5 142.5



#78  
 n-propylbenzene  
 Concen: 0.321 ug/l  
 RT: 11.311 min Scan# 1677  
 Delta R.T. 0.001 min  
 Lab File: VX030193.D  
 Acq: 25 Jul 2022 15:07

Tgt Ion: 91	Resp:	3909
Ion Ratio	Lower	Upper
91	100	
120	19.9	11.6 34.8

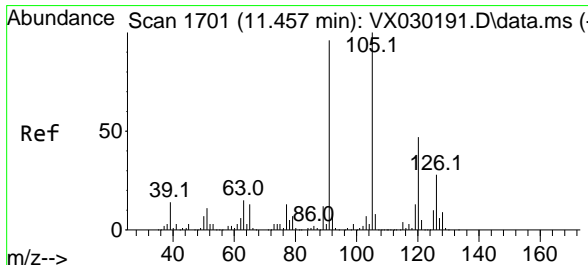
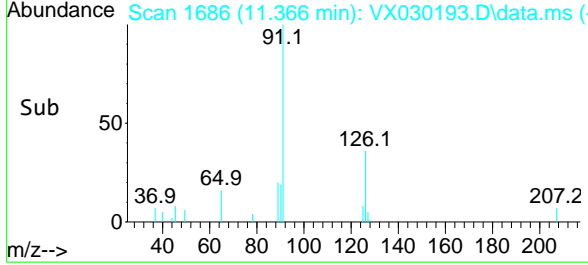
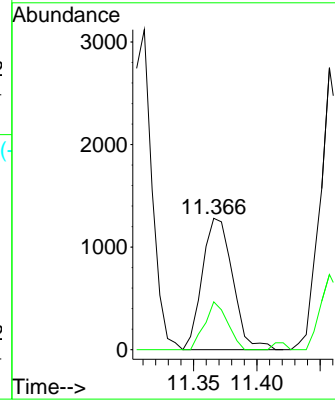
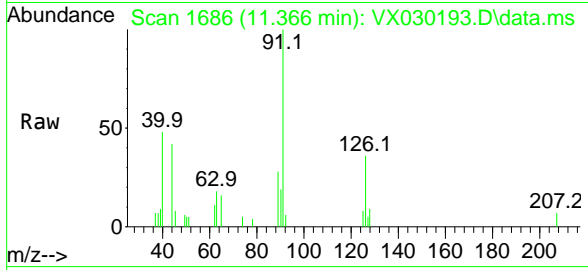




#79  
 2-Chlorotoluene  
 Concen: 0.278 ug/l  
 RT: 11.366 min Scan# 1  
 Delta R.T. 0.001 min  
 Lab File: VX030193.D  
 Acq: 25 Jul 2022 15:07

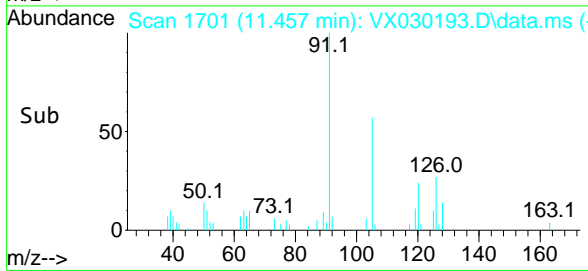
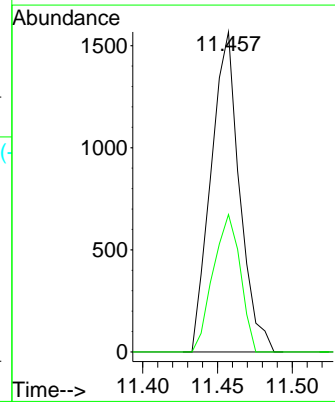
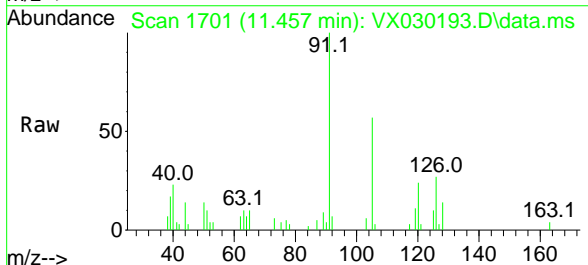
Instrument : MSVOA\_X  
 ClientSampleId : IBLK

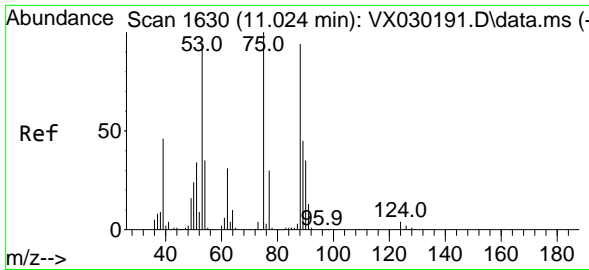
Tgt Ion: 91 Resp: 2138  
 Ion Ratio Lower Upper  
 91 100  
 126 27.2 17.4 52.3



#80  
 1,3,5-Trimethylbenzene  
 Concen: 0.244 ug/l  
 RT: 11.457 min Scan# 1701  
 Delta R.T. 0.000 min  
 Lab File: VX030193.D  
 Acq: 25 Jul 2022 15:07

Tgt Ion: 105 Resp: 2083  
 Ion Ratio Lower Upper  
 105 100  
 120 40.7 24.4 73.2

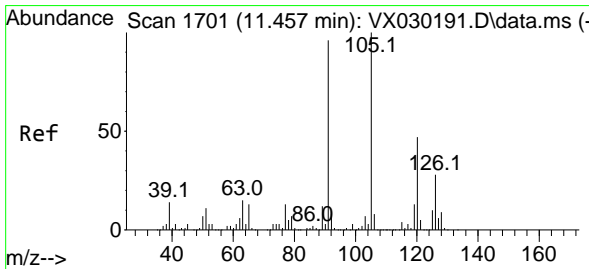
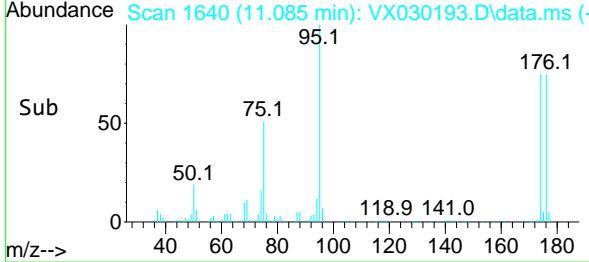
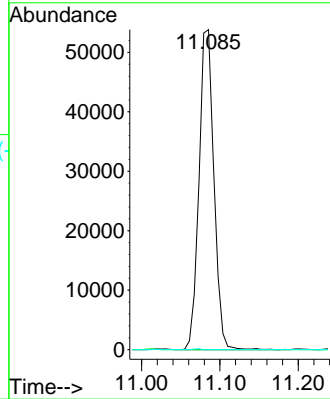
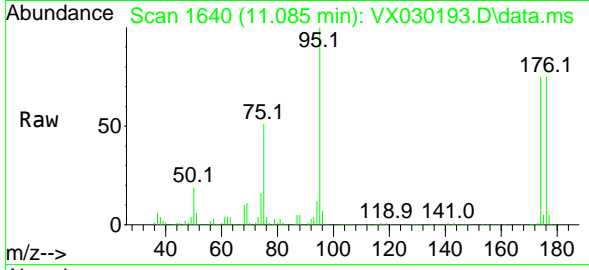




#81  
 trans-1,4-Dichloro-2-butene  
 Concen: 62.123 ug/l  
 RT: 11.085 min Scan# 1  
 Delta R.T. 0.061 min  
 Lab File: VX030193.D  
 Acq: 25 Jul 2022 15:07

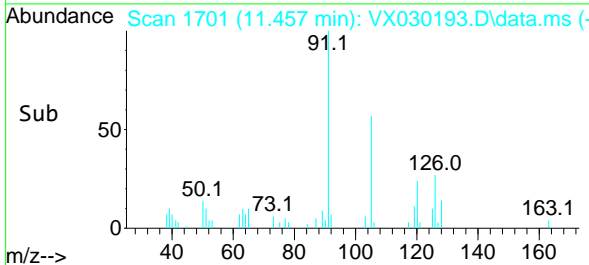
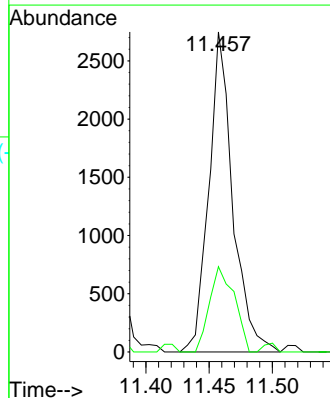
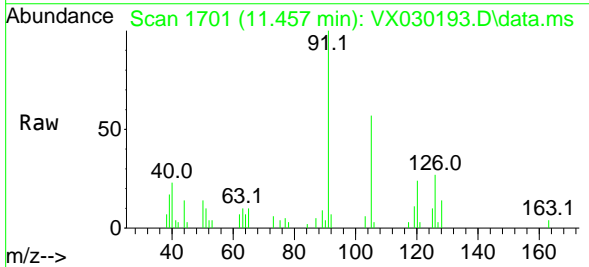
Instrument :  
 MSVOA\_X  
 ClientSampleId :  
 IBLK

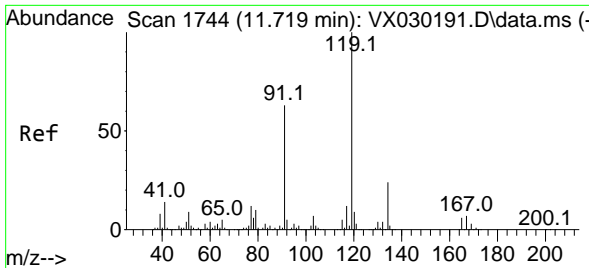
Tgt Ion: 75 Resp: 71292  
 Ion Ratio Lower Upper  
 75 100  
 53 0.0 74.2 111.4#  
 89 0.1 34.8 52.2#



#82  
 4-Chlorotoluene  
 Concen: 0.430 ug/l  
 RT: 11.457 min Scan# 1701  
 Delta R.T. 0.000 min  
 Lab File: VX030193.D  
 Acq: 25 Jul 2022 15:07

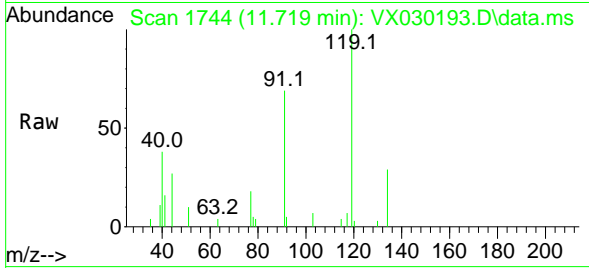
Tgt Ion: 91 Resp: 3613  
 Ion Ratio Lower Upper  
 91 100  
 126 27.7 15.3 45.9





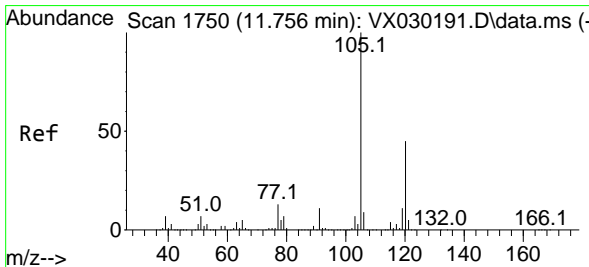
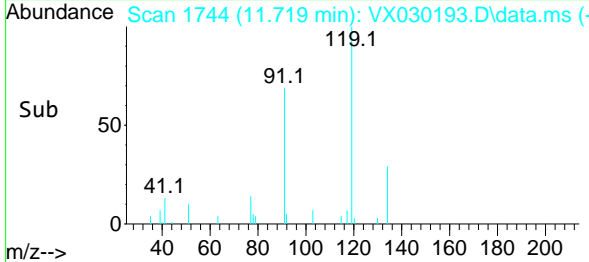
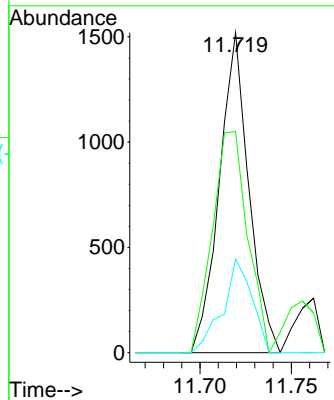
#83  
 tert-Butylbenzene  
 Concen: 0.215 ug/l  
 RT: 11.719 min Scan# 1744  
 Delta R.T. 0.000 min  
 Lab File: VX030193.D  
 Acq: 25 Jul 2022 15:07

Instrument : MSVOA\_X  
 ClientSampleId : IBLK

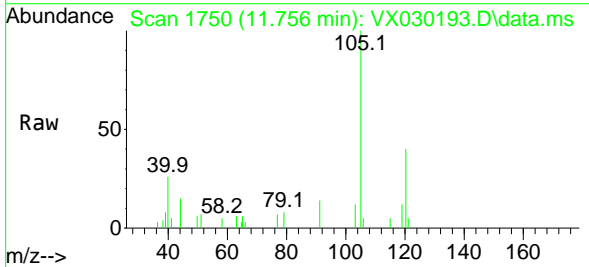


Tgt Ion:119 Resp: 1705

Ion	Ratio	Lower	Upper
119	100		
91	82.6	28.3	84.9
134	29.0	11.2	33.5

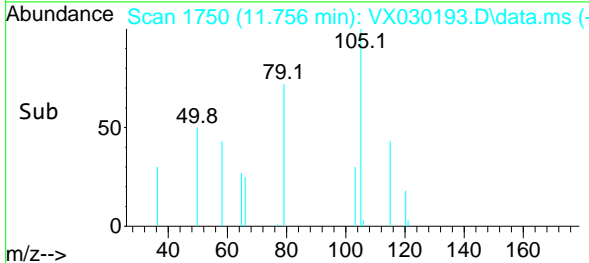
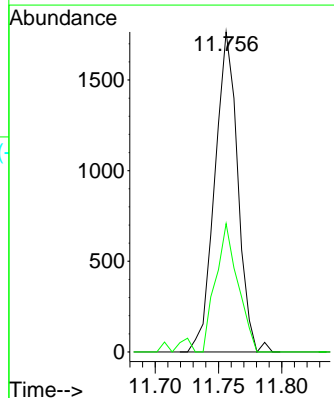


#84  
 1,2,4-Trimethylbenzene  
 Concen: 0.261 ug/l  
 RT: 11.756 min Scan# 1750  
 Delta R.T. 0.000 min  
 Lab File: VX030193.D  
 Acq: 25 Jul 2022 15:07

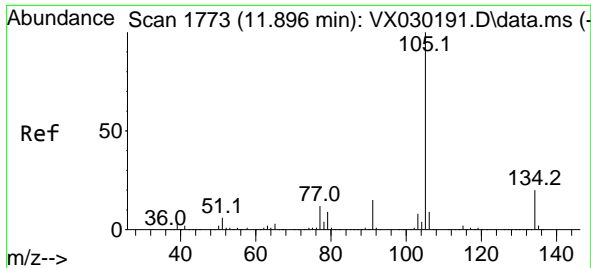


Tgt Ion:105 Resp: 2224

Ion	Ratio	Lower	Upper
105	100		
120	38.8	22.9	68.8



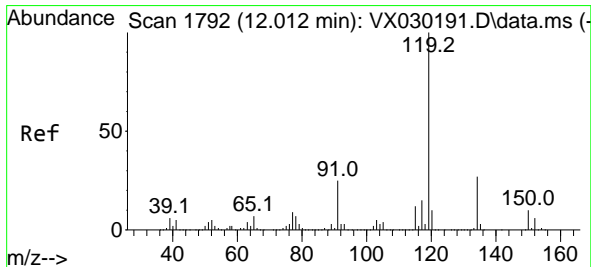
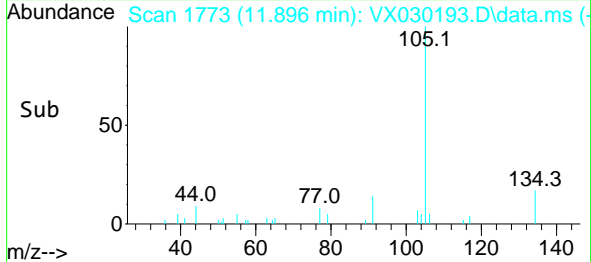
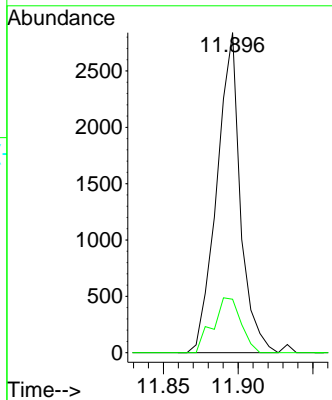
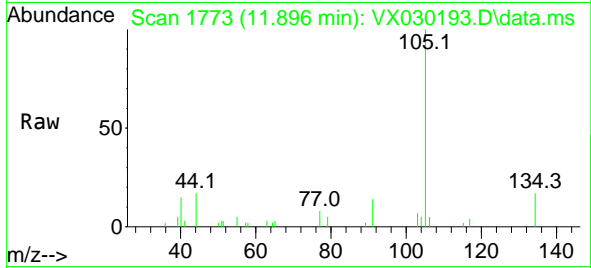




#85  
 sec-Butylbenzene  
 Concen: 0.287 ug/l  
 RT: 11.896 min Scan# 1773  
 Delta R.T. 0.000 min  
 Lab File: VX030193.D  
 Acq: 25 Jul 2022 15:07

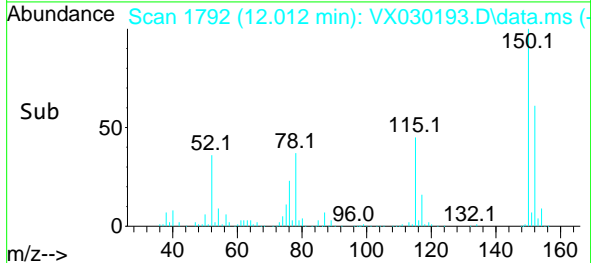
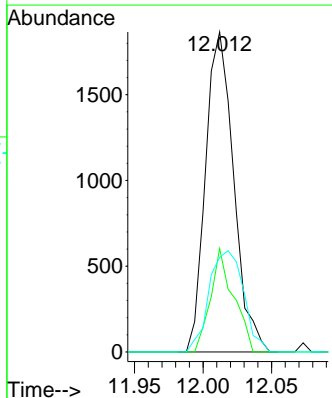
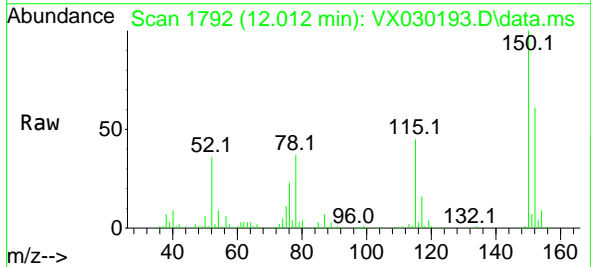
Instrument : MSVOA\_X  
 ClientSampleId : IBLK

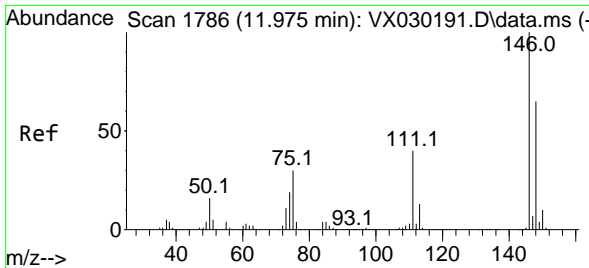
Tgt Ion	Resp	Ion Ratio	Lower	Upper
105	3111	100		
134	20.3	10.0	10.0	30.0



#86  
 p-Isopropyltoluene  
 Concen: 0.307 ug/l  
 RT: 12.012 min Scan# 1792  
 Delta R.T. 0.000 min  
 Lab File: VX030193.D  
 Acq: 25 Jul 2022 15:07

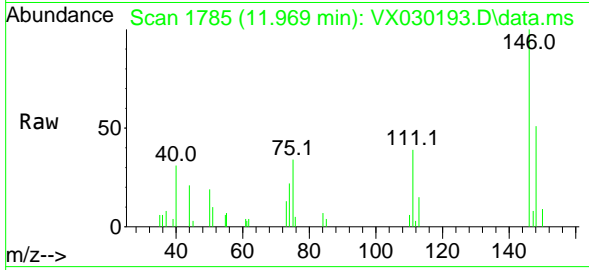
Tgt Ion	Resp	Ion Ratio	Lower	Upper
119	2660	100		
134	26.4	13.9	13.9	41.6
91	38.8	11.8	11.8	35.3



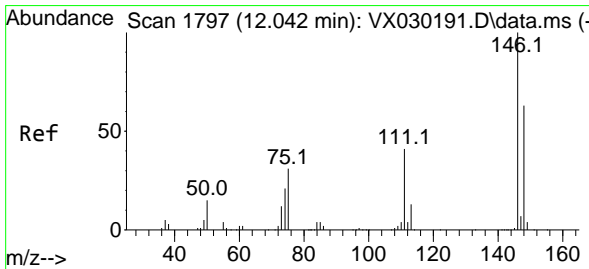
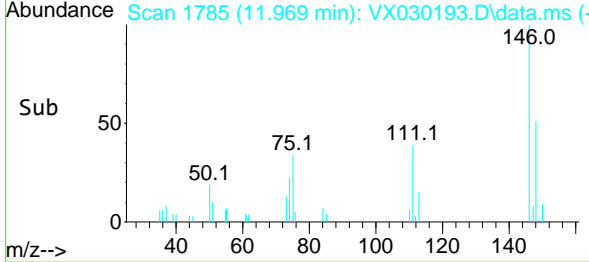
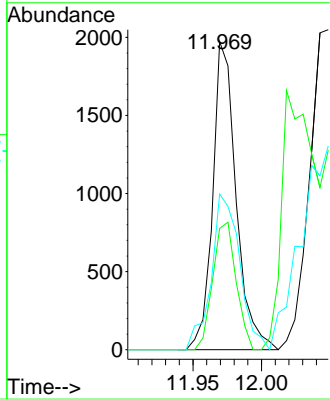


#87  
 1,3-Dichlorobenzene  
 Concen: 0.503 ug/l  
 RT: 11.969 min Scan# 1785  
 Delta R.T. -0.006 min  
 Lab File: VX030193.D  
 Acq: 25 Jul 2022 15:07

Instrument :  
 MSVOA\_X  
 ClientSampleId :  
 IBLK

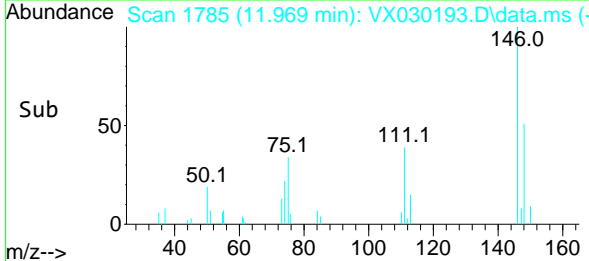
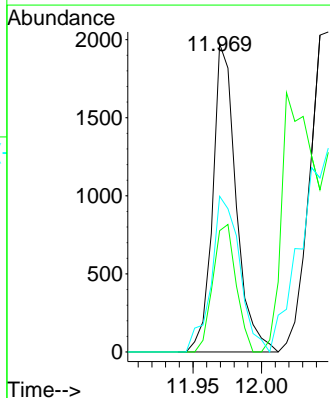
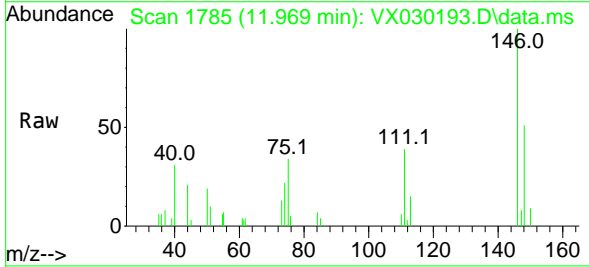


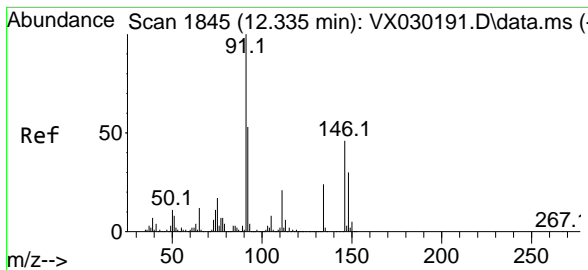
Tgt Ion:146 Resp: 2343  
 Ion Ratio Lower Upper  
 146 100  
 111 41.2 20.3 60.8  
 148 61.4 31.8 95.3



#88  
 1,4-Dichlorobenzene  
 Concen: 0.495 ug/l  
 RT: 11.969 min Scan# 1785  
 Delta R.T. -0.073 min  
 Lab File: VX030193.D  
 Acq: 25 Jul 2022 15:07

Tgt Ion:146 Resp: 2343  
 Ion Ratio Lower Upper  
 146 100  
 111 41.2 20.3 60.9  
 148 61.4 32.3 96.8

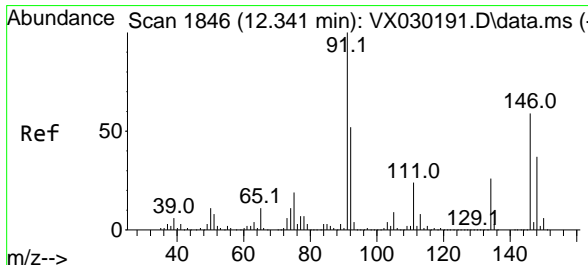
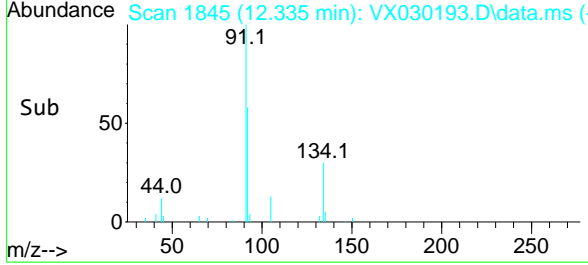
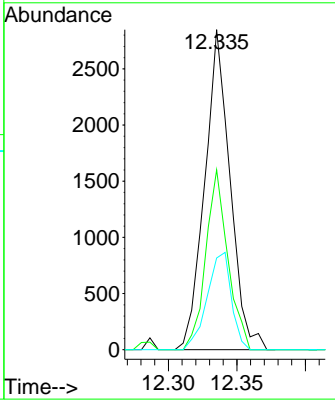
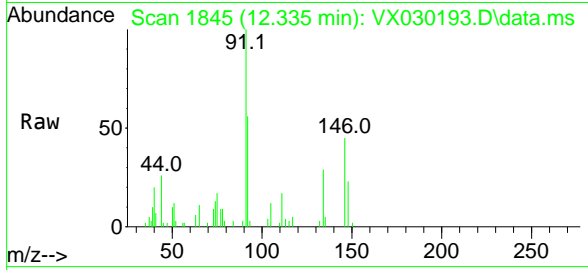




#89  
 n-Butylbenzene  
 Concen: 0.454 ug/l  
 RT: 12.335 min Scan# 1845  
 Delta R.T. 0.000 min  
 Lab File: VX030193.D  
 Acq: 25 Jul 2022 15:07

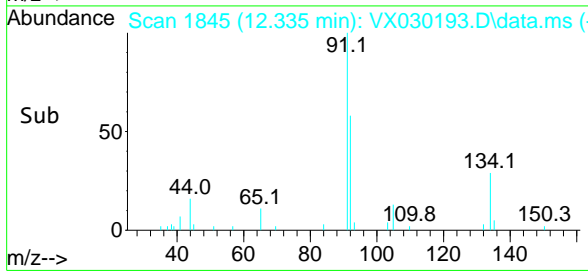
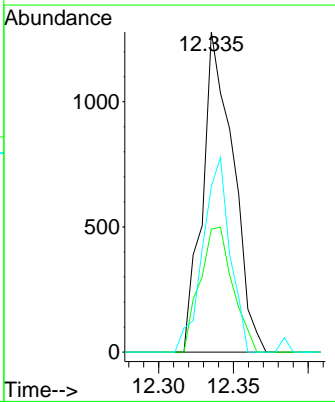
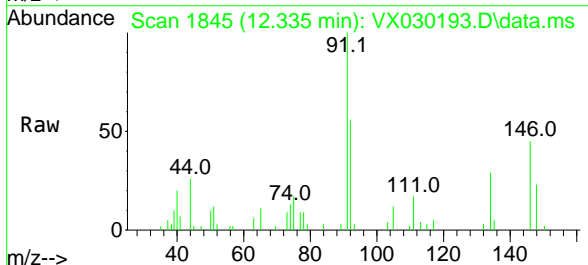
Instrument : MSVOA\_X  
 ClientSampleId : IBLK

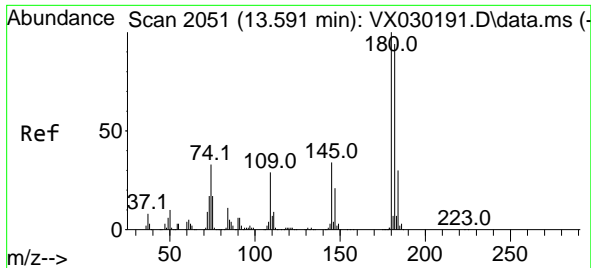
Tgt Ion	Resp	Lower	Upper
91	100		
92	48.9	26.2	78.5
134	29.0	12.6	37.8



#91  
 1,2-Dichlorobenzene  
 Concen: 0.399 ug/l  
 RT: 12.335 min Scan# 1845  
 Delta R.T. -0.006 min  
 Lab File: VX030193.D  
 Acq: 25 Jul 2022 15:07

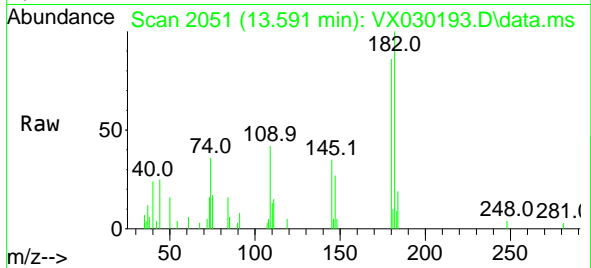
Tgt Ion	Resp	Lower	Upper
146	100		
111	41.7	20.7	62.1
148	53.8	32.0	96.2



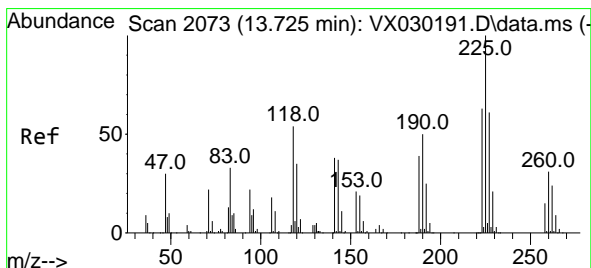
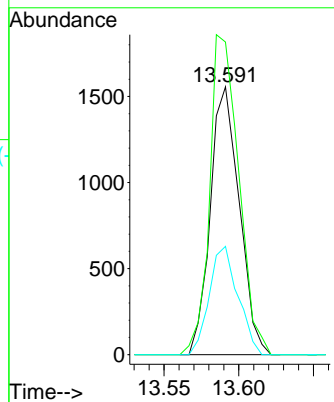
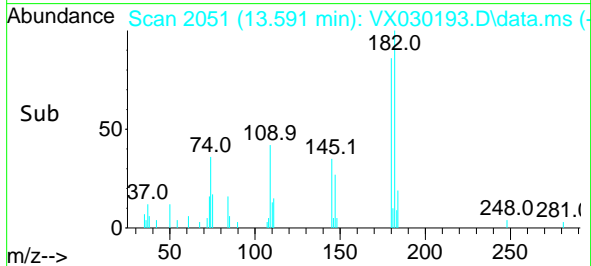


#93  
 1,2,4-Trichlorobenzene  
 Concen: 0.791 ug/l  
 RT: 13.591 min Scan# 2051  
 Delta R.T. 0.000 min  
 Lab File: VX030193.D  
 Acq: 25 Jul 2022 15:07

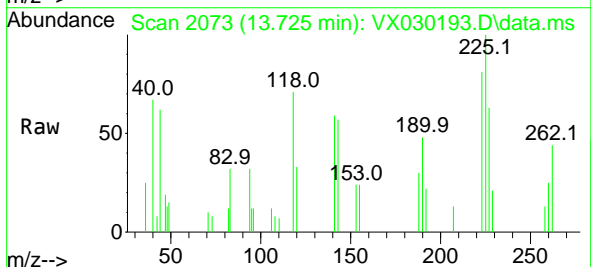
Instrument : MSVOA\_X  
 ClientSampleId : IBLK



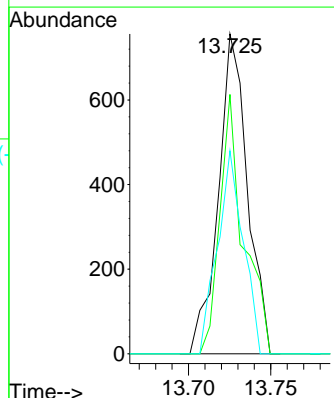
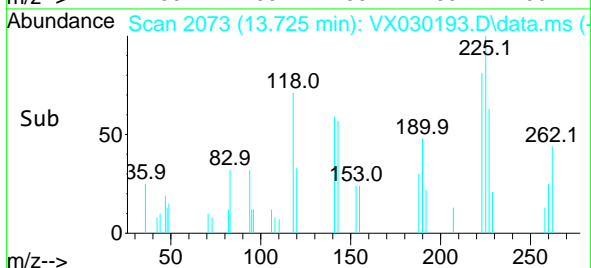
Tgt Ion:180 Resp: 2096  
 Ion Ratio Lower Upper  
 180 100  
 182 120.0 48.2 144.6  
 145 40.0 15.9 47.6

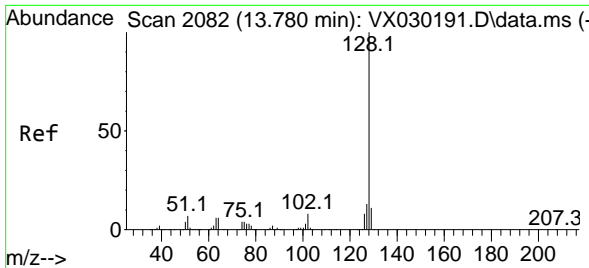


#94  
 Hexachlorobutadiene  
 Concen: 0.871 ug/l  
 RT: 13.725 min Scan# 2073  
 Delta R.T. 0.000 min  
 Lab File: VX030193.D  
 Acq: 25 Jul 2022 15:07



Tgt Ion:225 Resp: 927  
 Ion Ratio Lower Upper  
 225 100  
 223 66.1 30.6 91.6  
 227 56.0 31.9 95.9

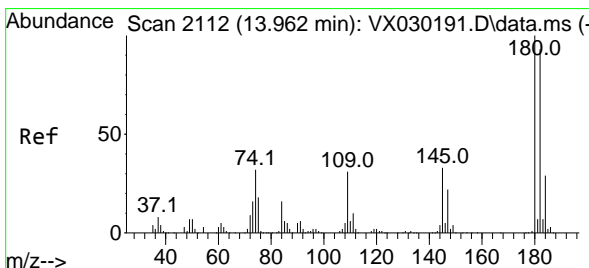
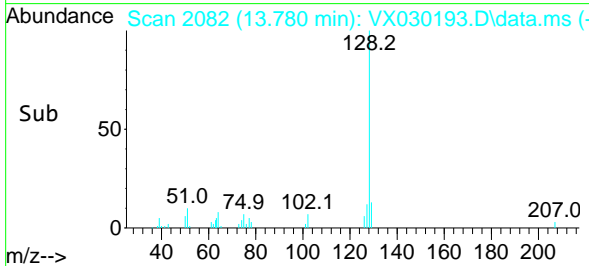
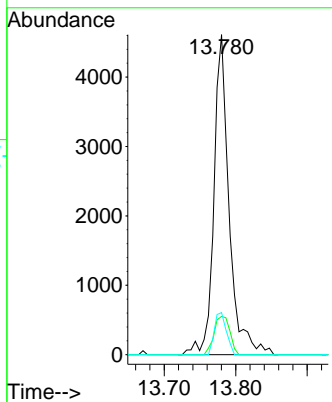
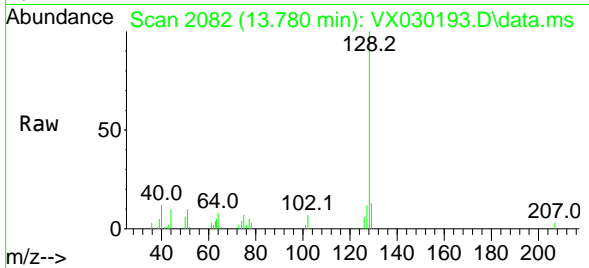




#95  
 Naphthalene  
 Concen: 0.659 ug/l  
 RT: 13.780 min Scan# 2082  
 Delta R.T. 0.000 min  
 Lab File: VX030193.D  
 Acq: 25 Jul 2022 15:07

Instrument : MSVOA\_X  
 ClientSampleId : IBLK

Tgt Ion	Resp	Lower	Upper
128	6823		
127	12.4	10.2	15.2
129	10.4	8.6	13.0



#96  
 1,2,3-Trichlorobenzene  
 Concen: 0.680 ug/l  
 RT: 13.963 min Scan# 2112  
 Delta R.T. 0.001 min  
 Lab File: VX030193.D  
 Acq: 25 Jul 2022 15:07

Tgt Ion	Resp	Lower	Upper
180	1847		
182	112.6	47.0	141.0
145	39.5	17.0	50.9

