

Data Path : Z:\voasrv\HPCHEM1\MSVOA_X\Data\VX072523\
 Data File : VX036656.D
 Acq On : 25 Jul 2023 16:26
 Operator : JC/MD
 Sample : 03750-07 1000X
 Misc : 5.0mL/MSVOA_X/WATER
 ALS Vial : 16 Sample Multiplier: 1

Instrument :
 MSVOA_X
 ClientSampleId :
 LEA-11S

Quant Time: Jul 26 06:27:02 2023
 Quant Method : Z:\voasrv\HPCHEM1\MSVOA_X\Method\82X072123W.M
 Quant Title : SW846 8260
 QLast Update : Fri Jul 21 12:14:12 2023
 Response via : Initial Calibration

Compound	R.T.	QIon	Response	Conc	Units	Dev(Min)

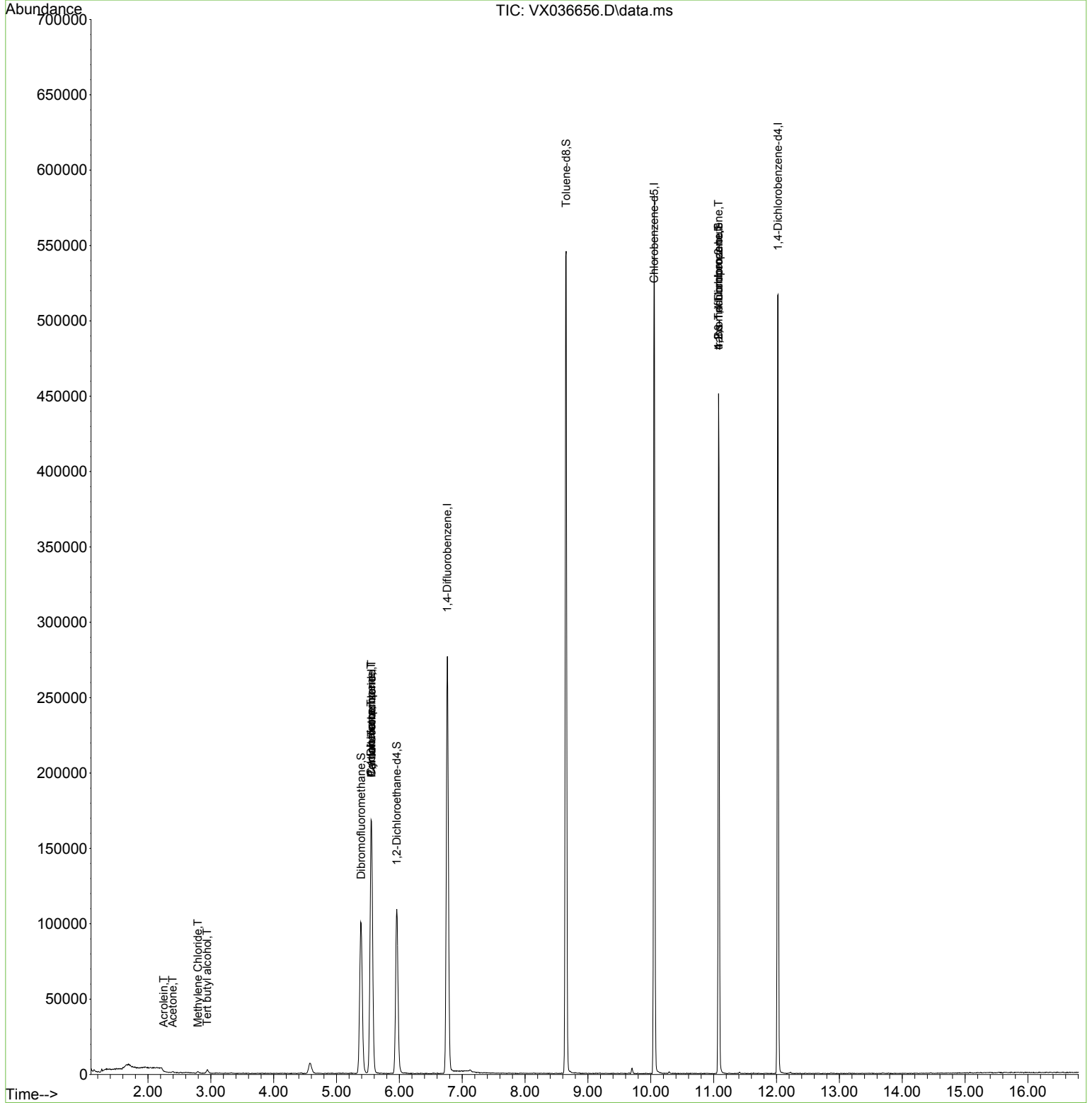
Internal Standards						
1) Pentafluorobenzene	5.555	168	156539	50.000	ug/l	0.00
34) 1,4-Difluorobenzene	6.763	114	279125	50.000	ug/l	0.00
63) Chlorobenzene-d5	10.055	117	253698	50.000	ug/l	0.00
72) 1,4-Dichlorobenzene-d4	12.024	152	108292	50.000	ug/l	0.00
System Monitoring Compounds						
33) 1,2-Dichloroethane-d4	5.958	65	104999	45.332	ug/l	0.00
Spiked Amount	50.000	Range 78 - 117	Recovery =	90.660%		
35) Dibromofluoromethane	5.391	113	88599	46.180	ug/l	0.00
Spiked Amount	50.000	Range 75 - 124	Recovery =	92.360%		
50) Toluene-d8	8.652	98	332380	48.853	ug/l	0.00
Spiked Amount	50.000	Range 92 - 112	Recovery =	97.700%		
62) 4-Bromofluorobenzene	11.079	95	122069	47.555	ug/l	0.00
Spiked Amount	50.000	Range 83 - 123	Recovery =	95.120%		
Target Compounds						
					Qvalue	
11) Tert butyl alcohol	2.940	59	1317	2.402	ug/l #	82
13) Acrolein	2.251	56	207	0.661	ug/l #	14
16) Acetone	2.391	43	868	0.903	ug/l	90
20) Methylene Chloride	2.794	84	498	0.233	ug/l	86
31) Cyclohexane	5.549	56	3712	1.157	ug/l #	1
36) 1,1-Dichloropropene	5.549	75	12769	4.465	ug/l #	50
38) Carbon Tetrachloride	5.555	117	16732	5.504	ug/l #	14
76) 1,2,3-Trichloropropane	11.079	75	63134	24.786	ug/l #	39
81) trans-1,4-Dichloro-2-b...	11.079	75	63134	56.179	ug/l #	5

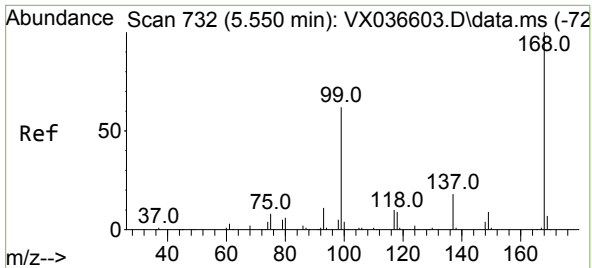
(#) = qualifier out of range (m) = manual integration (+) = signals summed

Data Path : Z:\voasrv\HPCHEM1\MSVOA_X\Data\VX072523\
 Data File : VX036656.D
 Acq On : 25 Jul 2023 16:26
 Operator : JC/MD
 Sample : 03750-07 1000X
 Misc : 5.0mL/MSVOA_X/WATER
 ALS Vial : 16 Sample Multiplier: 1

Instrument :
 MSVOA_X
 ClientSampleId :
 LEA-11S

Quant Time: Jul 26 06:27:02 2023
 Quant Method : Z:\voasrv\HPCHEM1\MSVOA_X\Method\82X072123W.M
 Quant Title : SW846 8260
 QLast Update : Fri Jul 21 12:14:12 2023
 Response via : Initial Calibration

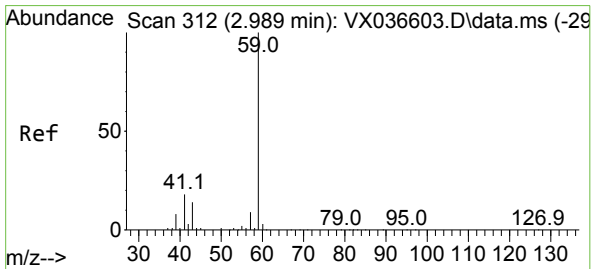
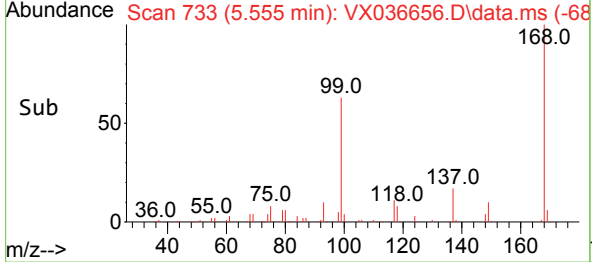
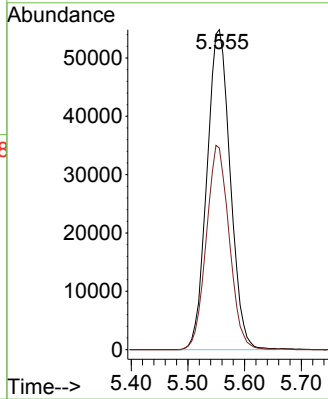
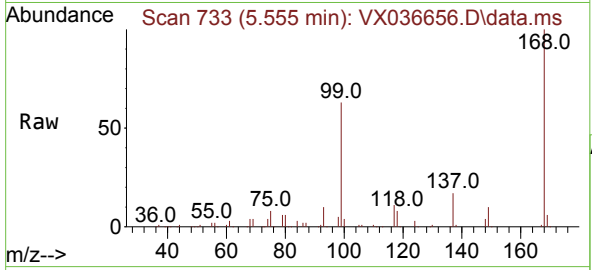




#1
 Pentafluorobenzene
 Concen: 50.000 ug/l
 RT: 5.555 min Scan# 71
 Delta R.T. 0.005 min
 Lab File: VX036656.D
 Acq: 25 Jul 2023 16:26

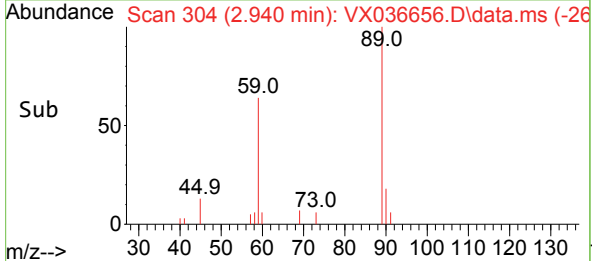
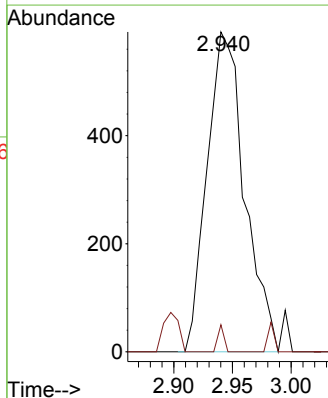
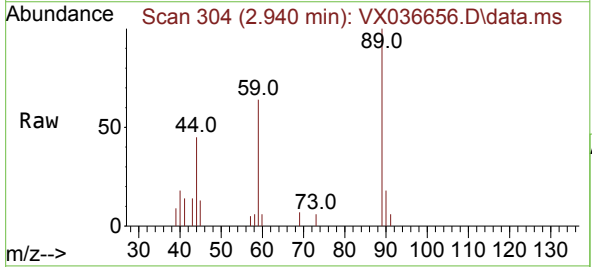
Instrument :
 MSVOA_X
 ClientSampleId :
 LEA-11S

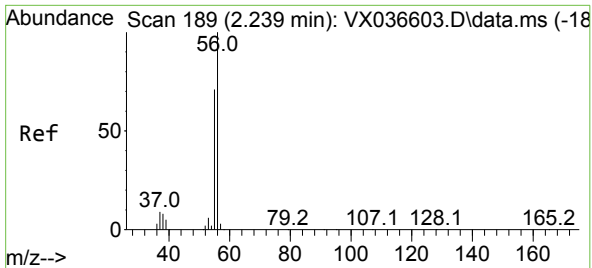
Tgt Ion:168 Resp: 156539
 Ion Ratio Lower Upper
 168 100
 99 63.1 56.6 85.0



#11
 Tert butyl alcohol
 Concen: 2.402 ug/l
 RT: 2.940 min Scan# 304
 Delta R.T. -0.049 min
 Lab File: VX036656.D
 Acq: 25 Jul 2023 16:26

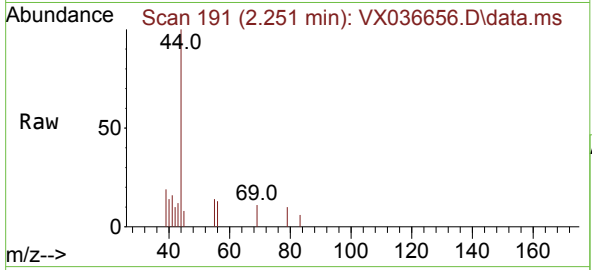
Tgt Ion: 59 Resp: 1317
 Ion Ratio Lower Upper
 59 100
 57 1.4 6.0 9.0#



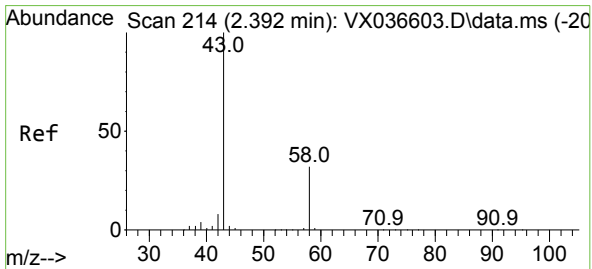
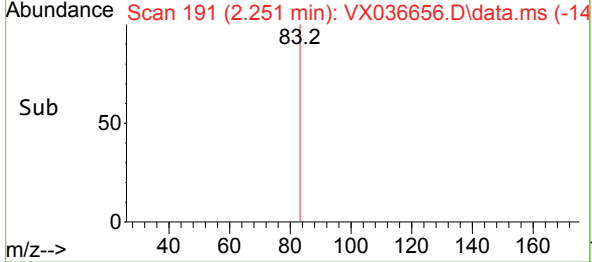
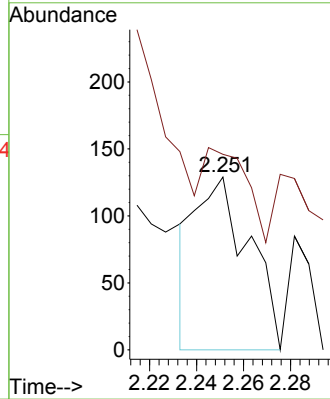


#13
 Acrolein
 Concen: 0.661 ug/l
 RT: 2.251 min Scan# 191
 Delta R.T. 0.012 min
 Lab File: VX036656.D
 Acq: 25 Jul 2023 16:26

Instrument : MSVOA_X
 ClientSampleId : LEA-11S

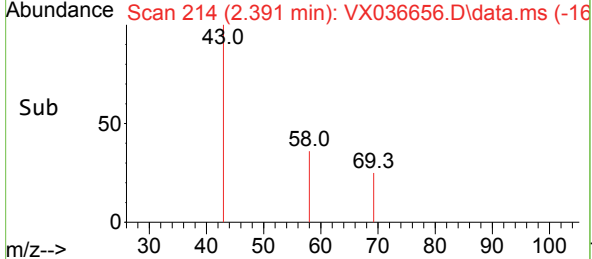
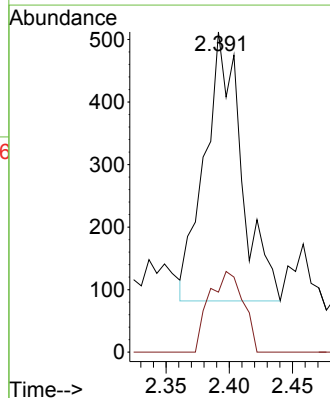
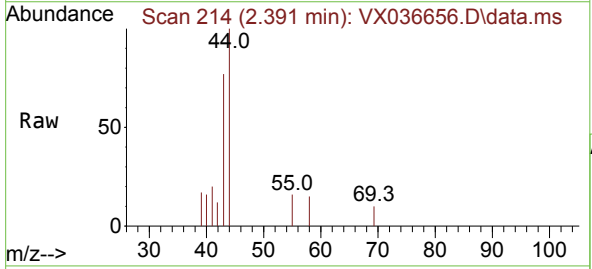


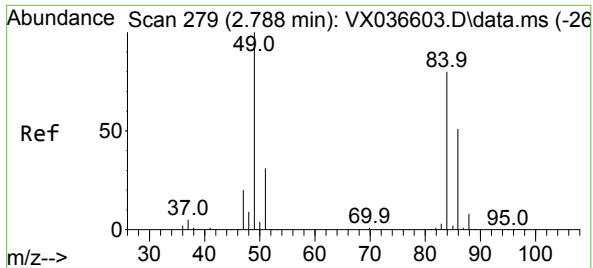
Tgt Ion: 56 Resp: 207
 Ion Ratio Lower Upper
 56 100
 55 0.0 57.1 85.7#



#16
 Acetone
 Concen: 0.903 ug/l
 RT: 2.391 min Scan# 214
 Delta R.T. -0.000 min
 Lab File: VX036656.D
 Acq: 25 Jul 2023 16:26

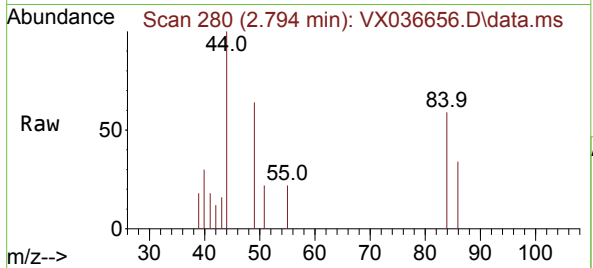
Tgt Ion: 43 Resp: 868
 Ion Ratio Lower Upper
 43 100
 58 22.3 21.9 32.9



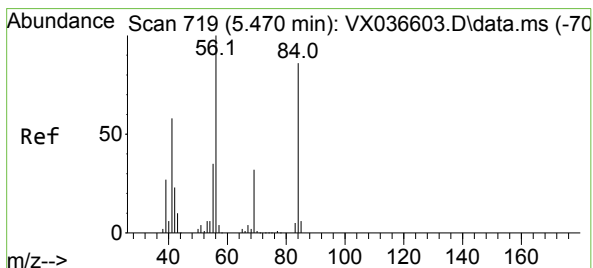
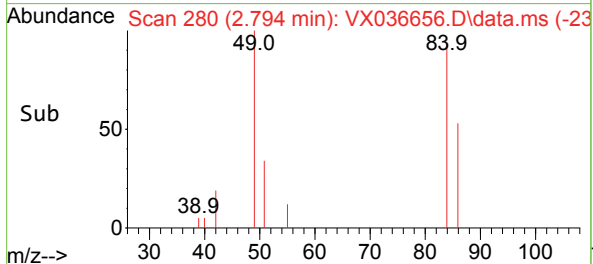
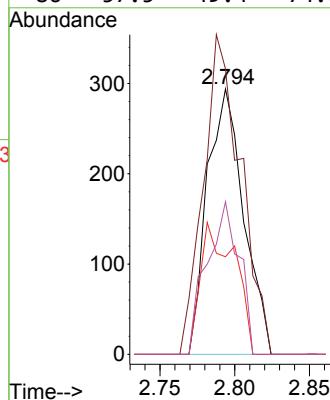


#20
 Methylene Chloride
 Concen: 0.233 ug/l
 RT: 2.794 min Scan# 21
 Delta R.T. 0.006 min
 Lab File: VX036656.D
 Acq: 25 Jul 2023 16:26

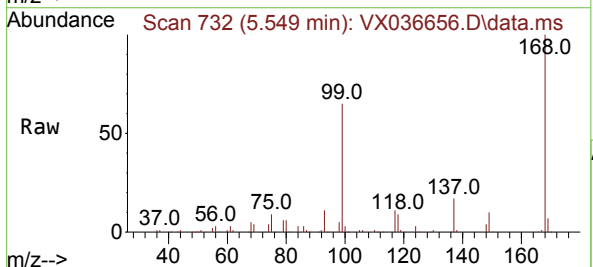
Instrument :
 MSVOA_X
 ClientSampleId :
 LEA-11S



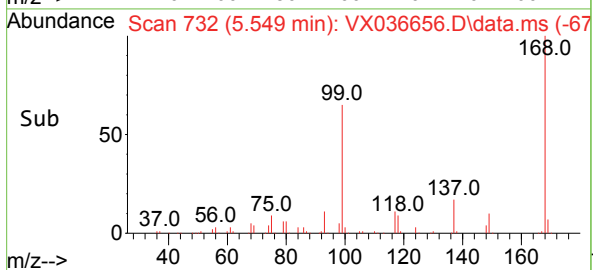
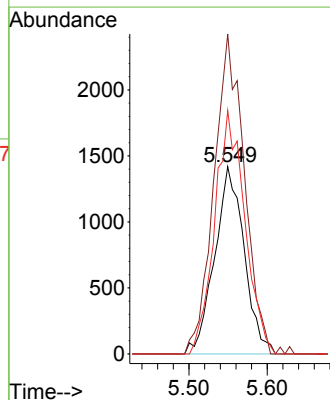
Tgt Ion: 84 Resp: 498
 Ion Ratio Lower Upper
 84 100
 49 107.5 103.6 155.4
 51 36.7 33.8 50.6
 86 57.5 49.4 74.0

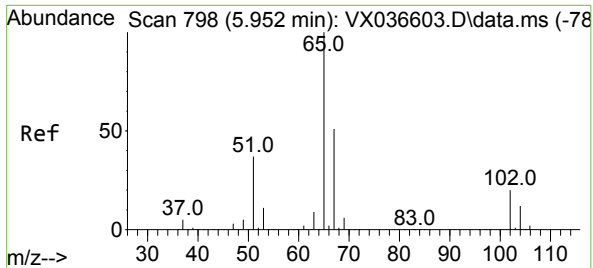


#31
 Cyclohexane
 Concen: 1.157 ug/l
 RT: 5.549 min Scan# 732
 Delta R.T. 0.079 min
 Lab File: VX036656.D
 Acq: 25 Jul 2023 16:26



Tgt Ion: 56 Resp: 3712
 Ion Ratio Lower Upper
 56 100
 69 170.8 23.4 35.2#
 84 129.9 65.9 98.9#

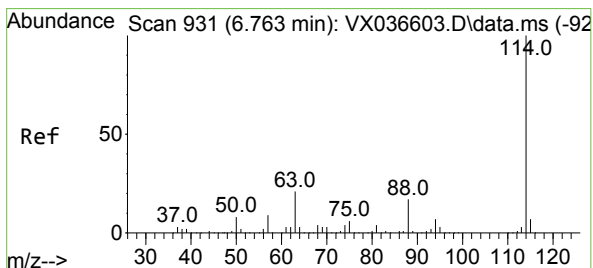
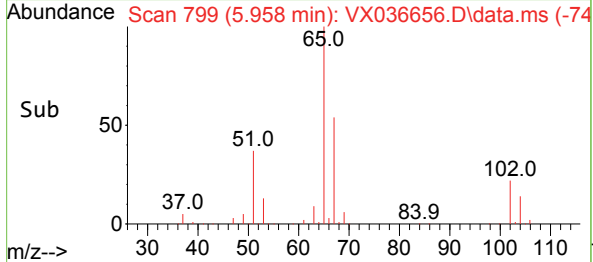
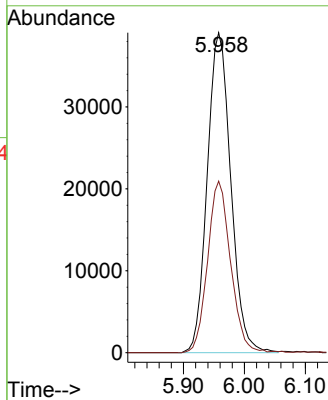
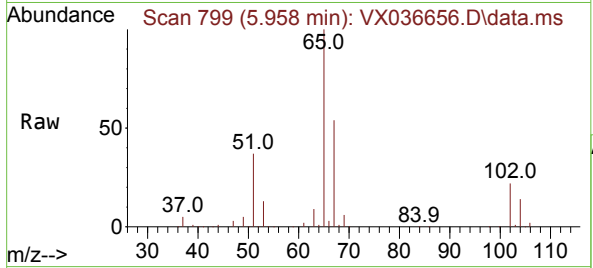




#33
 1,2-Dichloroethane-d4
 Concen: 45.332 ug/l
 RT: 5.958 min Scan# 798
 Delta R.T. 0.006 min
 Lab File: VX036656.D
 Acq: 25 Jul 2023 16:26

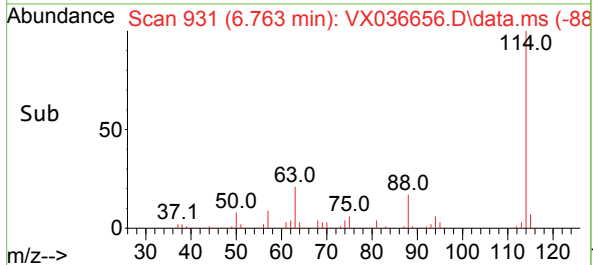
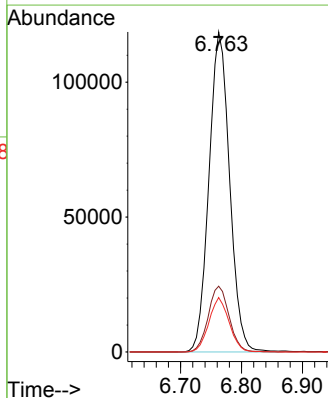
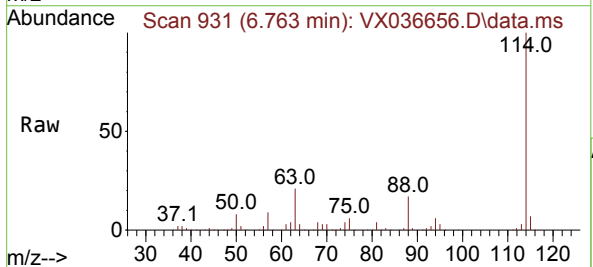
Instrument : MSVOA_X
 ClientSampleId : LEA-11S

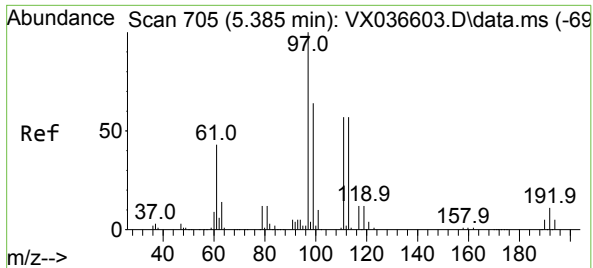
Tgt Ion: 65 Resp: 104999
 Ion Ratio Lower Upper
 65 100
 67 52.3 0.0 100.2



#34
 1,4-Difluorobenzene
 Concen: 50.000 ug/l
 RT: 6.763 min Scan# 931
 Delta R.T. -0.000 min
 Lab File: VX036656.D
 Acq: 25 Jul 2023 16:26

Tgt Ion:114 Resp: 279125
 Ion Ratio Lower Upper
 114 100
 63 20.6 0.0 45.0
 88 17.0 0.0 36.6

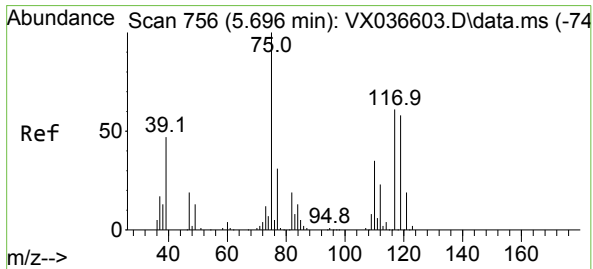
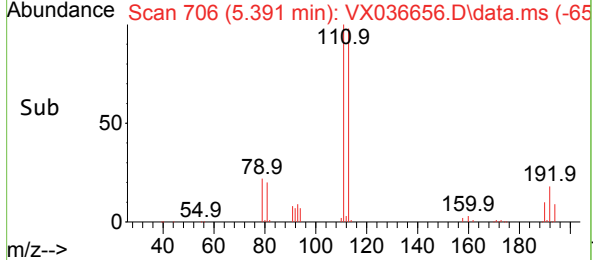
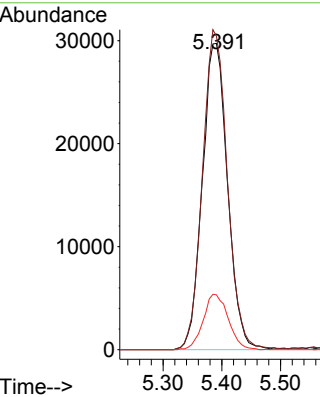
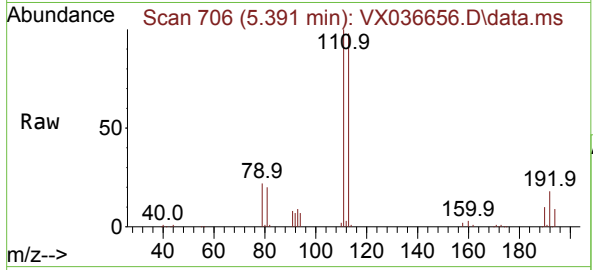




#35
 Dibromofluoromethane
 Concen: 46.180 ug/l
 RT: 5.391 min Scan# 706
 Delta R.T. 0.006 min
 Lab File: VX036656.D
 Acq: 25 Jul 2023 16:26

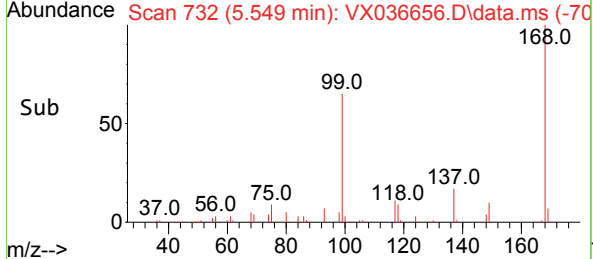
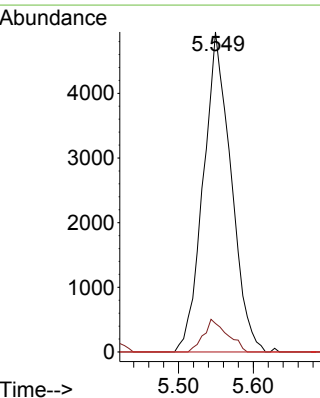
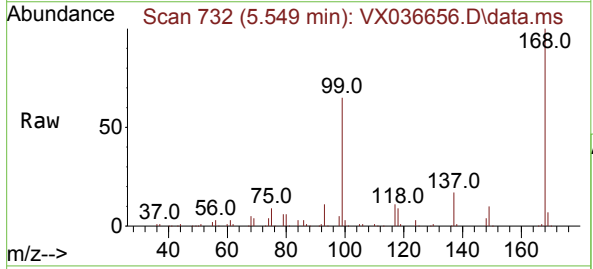
Instrument : MSVOA_X
 ClientSampleId : LEA-11S

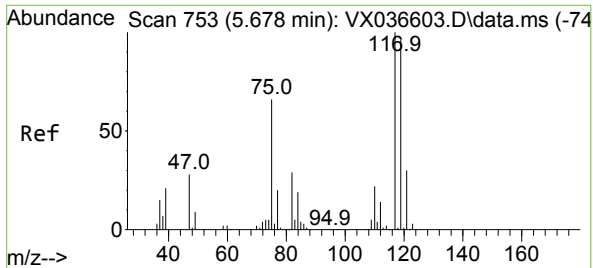
Tgt Ion	Resp	Lower	Upper
113	88599		
113	100		
111	103.3	82.9	124.3
192	18.0	13.3	19.9



#36
 1,1-Dichloropropene
 Concen: 4.465 ug/l
 RT: 5.549 min Scan# 732
 Delta R.T. -0.147 min
 Lab File: VX036656.D
 Acq: 25 Jul 2023 16:26

Tgt Ion	Resp	Lower	Upper
75	12769		
75	100		
110	8.7	17.0	50.9#
77	0.0	24.7	37.1#

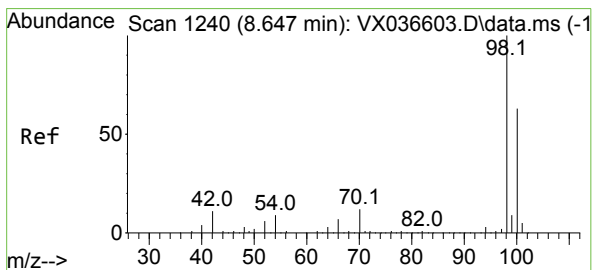
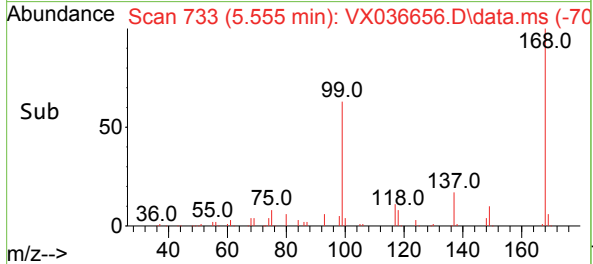
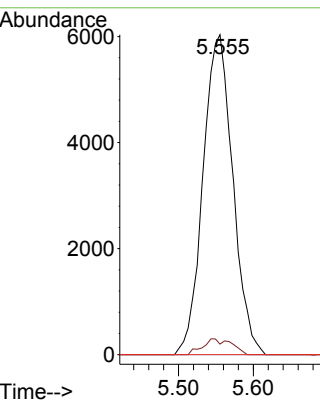
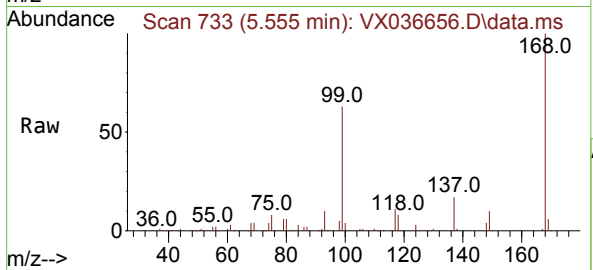




#38
 Carbon Tetrachloride
 Concen: 5.504 ug/l
 RT: 5.555 min Scan# 71
 Delta R.T. -0.122 min
 Lab File: VX036656.D
 Acq: 25 Jul 2023 16:26

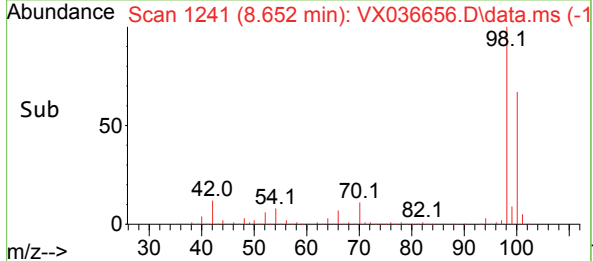
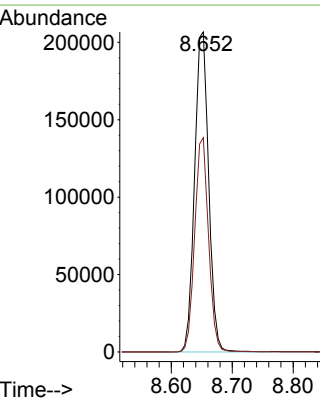
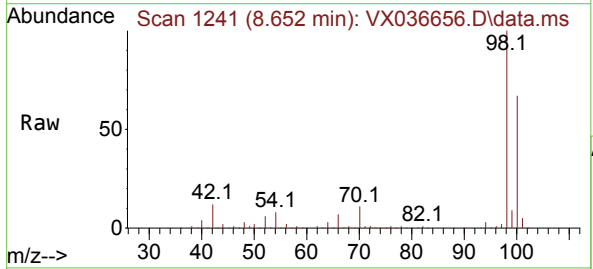
Instrument : MSVOA_X
 ClientSampleId : LEA-11S

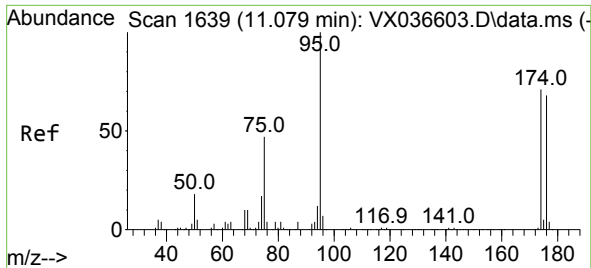
Tgt Ion:117 Resp: 16732
 Ion Ratio Lower Upper
 117 100
 119 3.3 78.2 117.2#
 121 0.0 24.4 36.6#



#50
 Toluene-d8
 Concen: 48.853 ug/l
 RT: 8.652 min Scan# 1241
 Delta R.T. 0.006 min
 Lab File: VX036656.D
 Acq: 25 Jul 2023 16:26

Tgt Ion: 98 Resp: 332380
 Ion Ratio Lower Upper
 98 100
 100 65.8 53.1 79.7



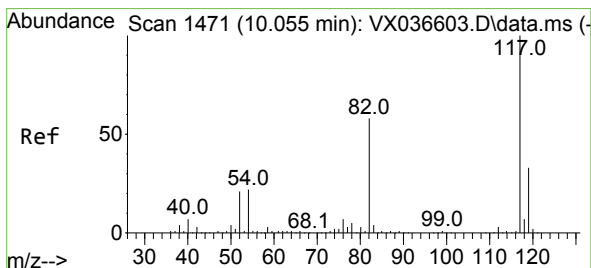
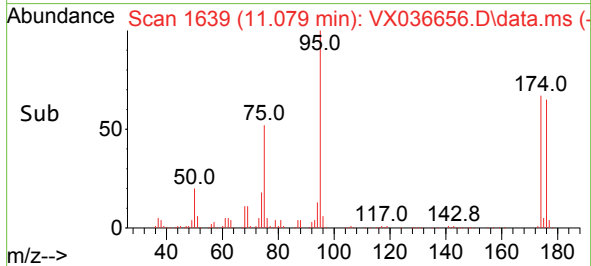
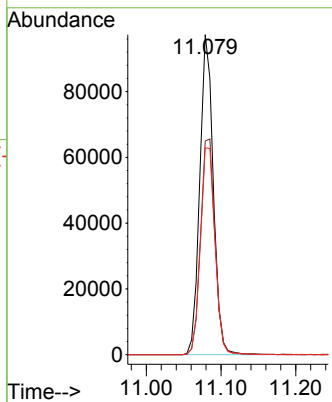
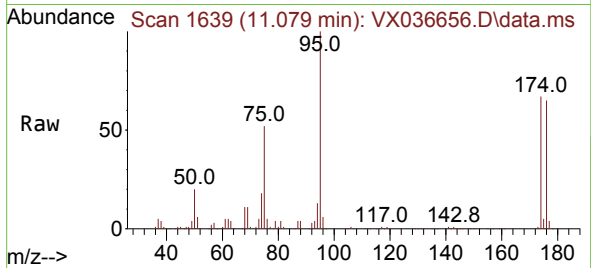


#62
 4-Bromofluorobenzene
 Concen: 47.555 ug/l
 RT: 11.079 min Scan# 1639
 Delta R.T. -0.000 min
 Lab File: VX036656.D
 Acq: 25 Jul 2023 16:26

Instrument : MSVOA_X
 ClientSampleId : LEA-11S

Tgt Ion: 95 Resp: 122069

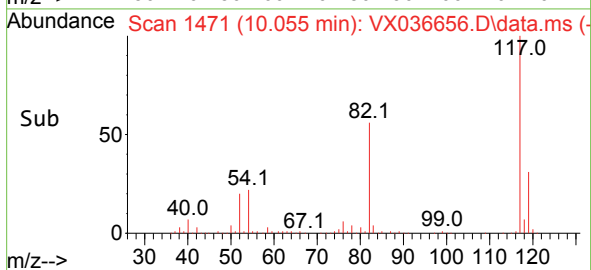
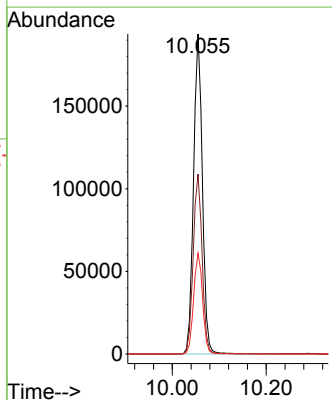
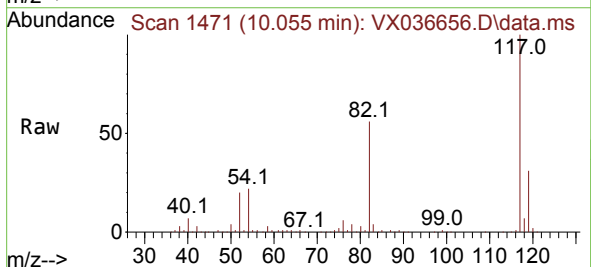
Ion	Ratio	Lower	Upper
95	100		
174	72.4	0.0	135.6
176	69.4	0.0	131.0

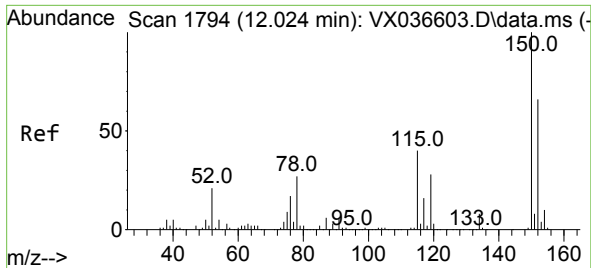


#63
 Chlorobenzene-d5
 Concen: 50.000 ug/l
 RT: 10.055 min Scan# 1471
 Delta R.T. -0.000 min
 Lab File: VX036656.D
 Acq: 25 Jul 2023 16:26

Tgt Ion: 117 Resp: 253698

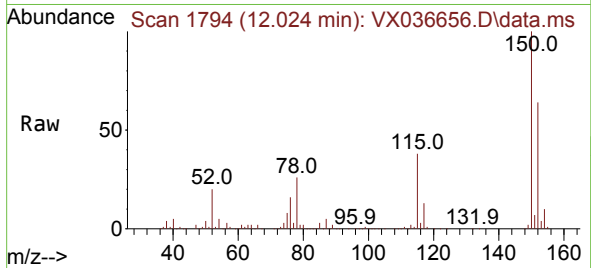
Ion	Ratio	Lower	Upper
117	100		
82	56.2	46.2	69.4
119	31.5	25.5	38.3



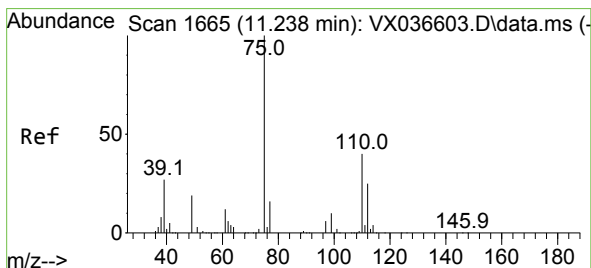
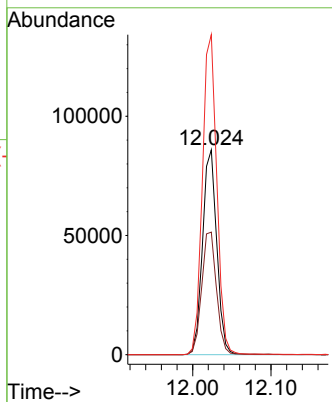
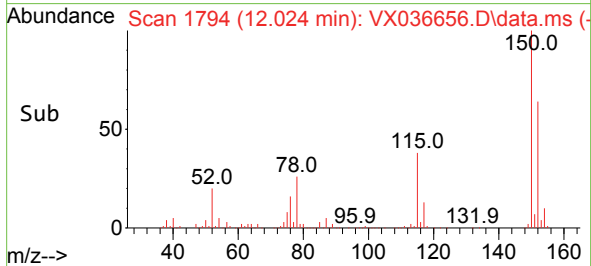


#72
 1,4-Dichlorobenzene-d4
 Concen: 50.000 ug/l
 RT: 12.024 min Scan# 11
 Delta R.T. -0.000 min
 Lab File: VX036656.D
 Acq: 25 Jul 2023 16:26

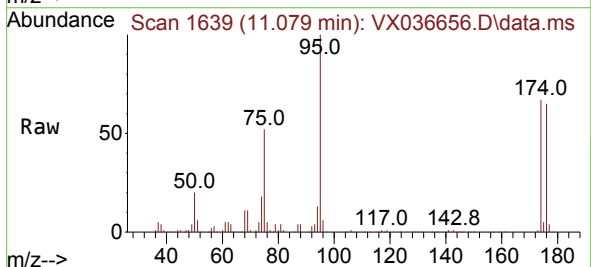
Instrument :
 MSVOA_X
 ClientSampleId :
 LEA-11S



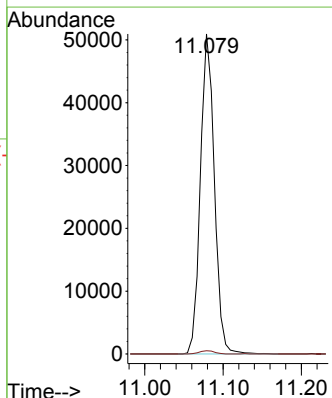
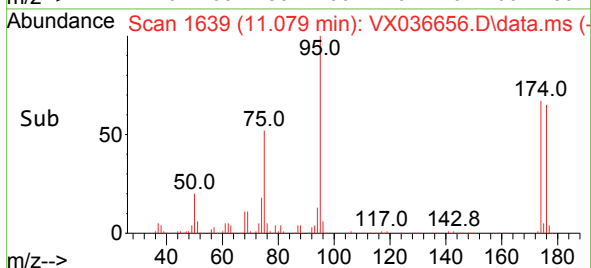
Tgt Ion:152 Resp: 108292
 Ion Ratio Lower Upper
 152 100
 115 62.3 43.3 129.9
 150 158.2 0.0 345.0

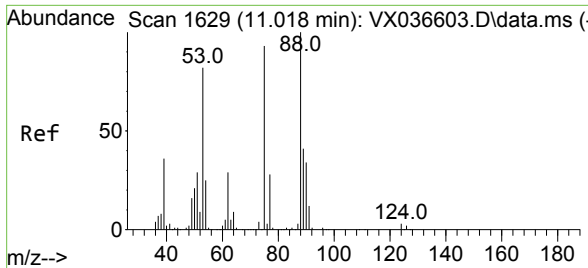


#76
 1,2,3-Trichloropropane
 Concen: 24.786 ug/l
 RT: 11.079 min Scan# 1639
 Delta R.T. -0.159 min
 Lab File: VX036656.D
 Acq: 25 Jul 2023 16:26



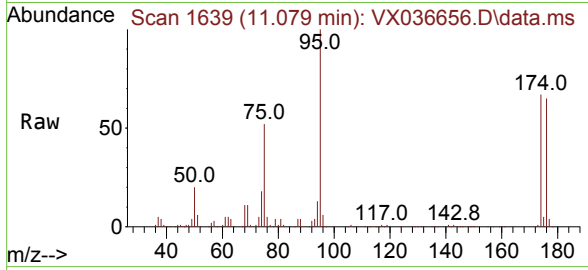
Tgt Ion: 75 Resp: 63134
 Ion Ratio Lower Upper
 75 100
 77 1.1 19.1 57.5#





#81
 trans-1,4-Dichloro-2-butene
 Concen: 56.179 ug/l
 RT: 11.079 min Scan# 10
 Delta R.T. 0.061 min
 Lab File: VX036656.D
 Acq: 25 Jul 2023 16:26

Instrument :
 MSVOA_X
 ClientSampleId :
 LEA-11S



Tgt Ion: 75 Resp: 63134

Ion	Ratio	Lower	Upper
75	100		
53	0.0	90.5	135.7#
89	0.0	36.9	55.3#

