

Data Path : Z:\VOASRV\HPCHEM1\MSVOA X\DATA\VX072618\  
 Data File : VX003707.D  
 Acq On : 27 Jul 2018 09:06  
 Operator : JC/SP  
 Sample : J4073-16  
 Misc : 5.0mL/MSVOA X/WATER  
 ALS Vial : 42 Sample Multiplier: 1

Instrument :  
 MSVOA\_X  
 ClientSampleId :  
 RE108D1-071718RE

Integration Parameters: RTEINT.P  
 Integrator: RTE  
 Smoothing : ON Filtering: 5  
 Sampling : 1 Min Area: 3 % of largest Peak  
 Start Thrs: 0.2 Max Peaks: 100  
 Stop Thrs : 0 Peak Location: TOP

If leading or trailing edge < 100 prefer < Baseline drop else tangent >  
 Peak separation: 5

Method : Z:\VOASRV\HPCHEM1\MSVOA\_X\METHOD\82X072418W.M  
 Title : SW846 8260

Signal : TIC

peak #	R.T. min	first scan	max scan	last scan	PK TY	peak height	corr. area	corr. % max.	% of total
1	1.075	72	80	94	rBV	186960	228801	37.16%	6.873%
2	2.623	328	334	343	rVB	12056	22622	3.67%	0.680%
3	4.769	677	686	698	rVB	2048	7048	1.14%	0.212%
4	5.507	796	807	822	rBV	67866	189476	30.78%	5.692%
5	5.665	822	833	849	rVB	87518	240753	39.10%	7.232%
6	6.074	888	900	911	rBV	80494	201178	32.68%	6.043%
7	6.866	1019	1030	1042	rBV	133216	313413	50.91%	9.415%
8	7.220	1078	1088	1100	rBV	67277	143512	23.31%	4.311%
9	8.720	1327	1334	1343	rBV	397692	615660	100.00%	18.494%
10	9.335	1427	1435	1441	rBV	22566	47731	7.75%	1.434%
11	10.116	1557	1563	1571	rBV	303369	397626	64.59%	11.944%
12	11.140	1725	1731	1746	rBV	353345	429021	69.68%	12.887%
13	11.372	1763	1769	1777	rBV	23718	51280	8.33%	1.540%
14	12.079	1880	1885	1893	rBV	354369	432427	70.24%	12.990%
15	12.823	2001	2007	2012	rBV	5702	8456	1.37%	0.254%

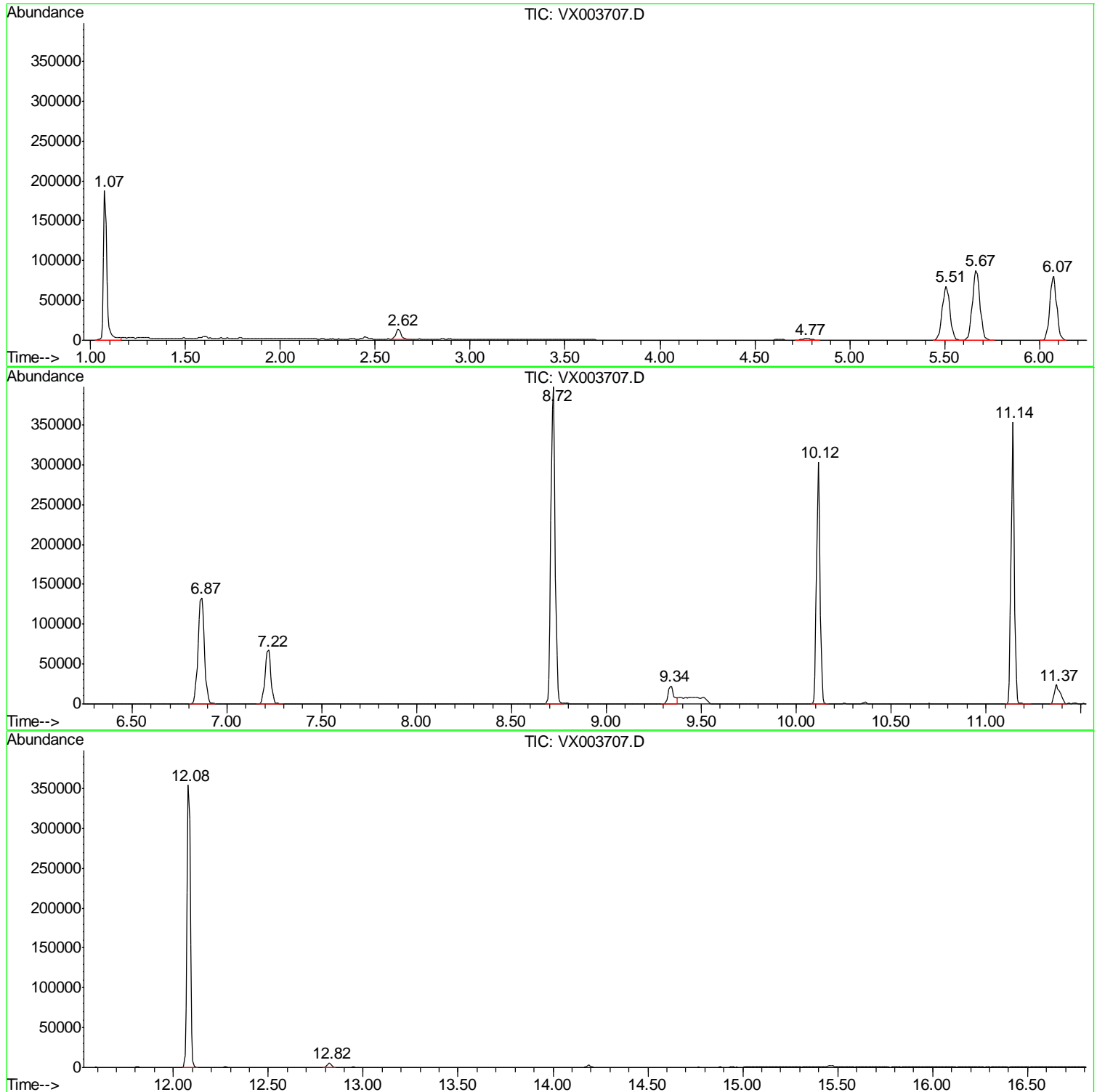
Sum of corrected areas: 3329004

Data Path : Z:\VOASRV\HPCHEM1\MSVOA X\DATA\VX072618\  
Data File : VX003707.D  
Acq On : 27 Jul 2018 09:06  
Operator : JC/SP  
Sample : J4073-16  
Misc : 5.0mL/MSVOA X/WATER  
ALS Vial : 42 Sample Multiplier: 1

Instrument :  
MSVOA\_X  
ClientSampled :  
RE108D1-071718RE

Quant Method : Z:\VOASRV\HPCHEM1\MSVOA\_X\METHOD\82X072418W.M  
Quant Title : SW846 8260

TIC Library : C:\DATABASE\NIST11.L  
TIC Integration Parameters: LSCINT.P



Data Path : Z:\VOASRV\HPCHEM1\MSVOA X\DATA\VX072618\  
 Data File : VX003707.D  
 Acq On : 27 Jul 2018 09:06  
 Operator : JC/SP  
 Sample : J4073-16  
 Misc : 5.0mL/MSVOA X/WATER  
 ALS Vial : 42 Sample Multiplier: 1

Instrument :  
 MSVOA\_X  
 ClientSampleID :  
 RE108D1-071718RE

Quant Method : Z:\VOASRV\HPCHEM1\MSVOA\_X\METHOD\82X072418W.M  
 Quant Title : SW846 8260

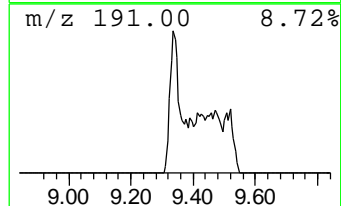
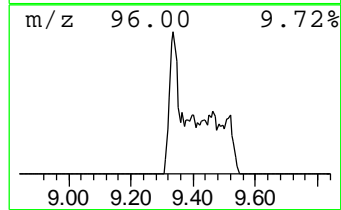
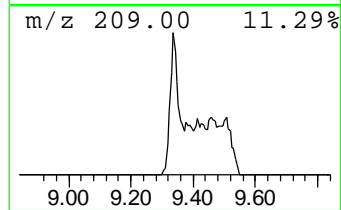
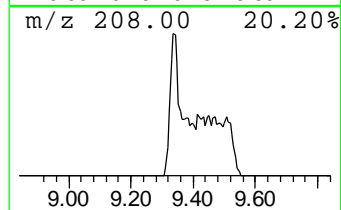
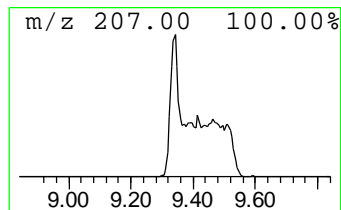
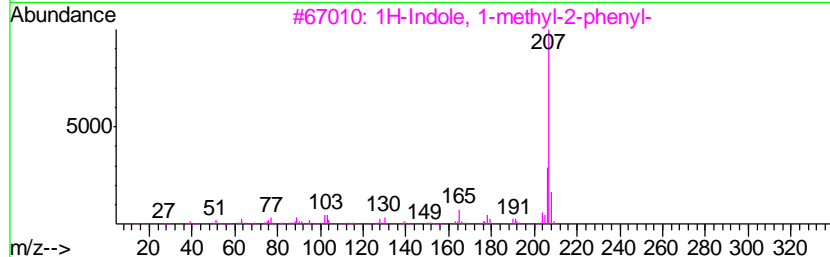
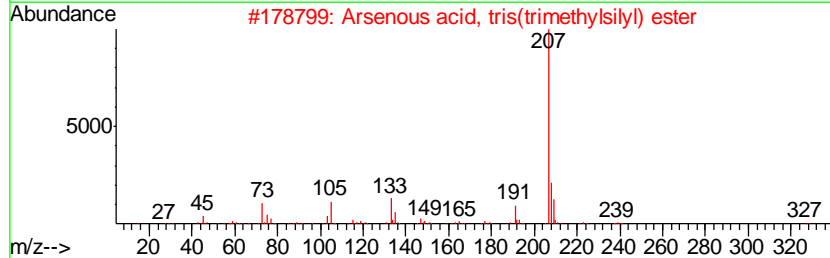
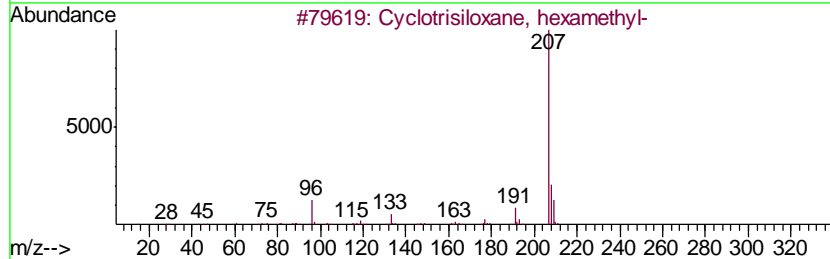
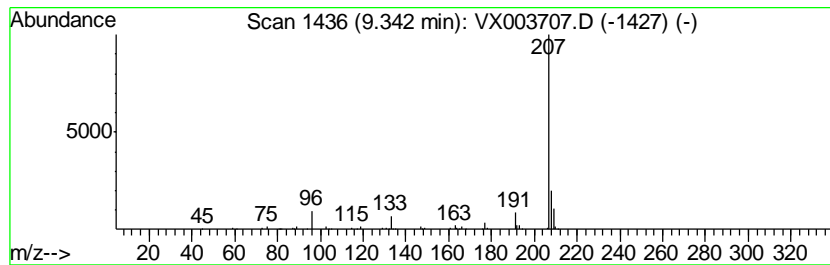
TIC Library : C:\DATABASE\NIST11.L  
 TIC Integration Parameters: LSCINT.P

\*\*\*\*\*  
 Peak Number 2 Cyclotrisiloxane, hexamethyl- Concentration Rank 2

R.T.	EstConc	Area	Relative to ISTD	R.T.
9.34	6.00 ug/l	47731	Chlorobenzene-d5	10.12

Hit#	of	Tentative ID	MW	MolForm	CAS#	Qual
1	5	Cyclotrisiloxane, hexamethyl-	222	C6H18O3Si3	000541-05-9	91
2		Arsenous acid, tris(trimethylsil...	342	C9H27AsO3Si3	055429-29-3	78
3		1H-Indole, 1-methyl-2-phenyl-	207	C15H13N	003558-24-5	59
4		Benzo[h]quinoline, 2,4-dimethyl-	207	C15H13N	000605-67-4	39
5		Cyclopentene-1-carboxylic acid, ...	332	C23H24O2	1000159-40-6	38



Data Path : Z:\VOASRV\HPCHEM1\MSVOA X\DATA\VX072618\  
 Data File : VX003707.D  
 Acq On : 27 Jul 2018 09:06  
 Operator : JC/SP  
 Sample : J4073-16  
 Misc : 5.0mL/MSVOA X/WATER  
 ALS Vial : 42 Sample Multiplier: 1

Instrument :  
 MSVOA\_X  
 ClientSampleID :  
 RE108D1-071718RE

Quant Method : Z:\VOASRV\HPCHEM1\MSVOA\_X\METHOD\82X072418W.M  
 Quant Title : SW846 8260

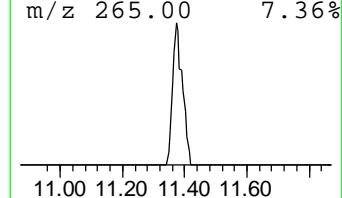
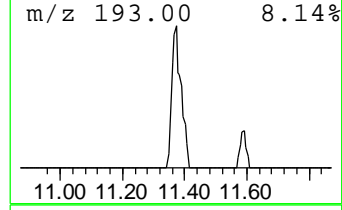
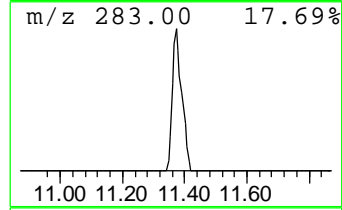
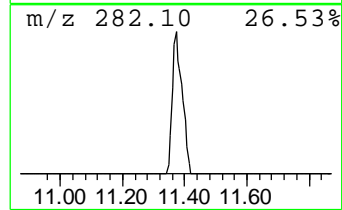
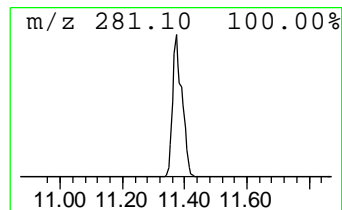
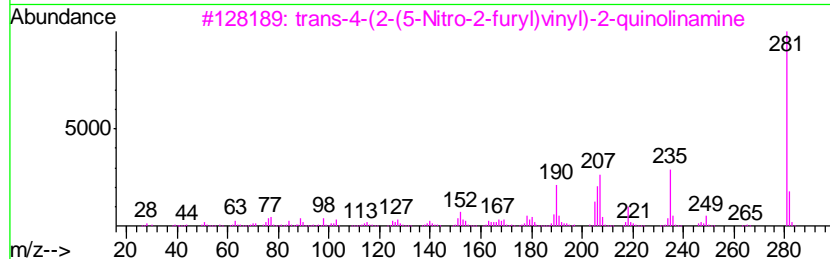
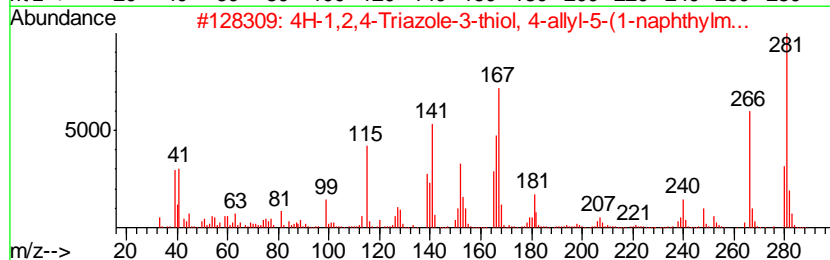
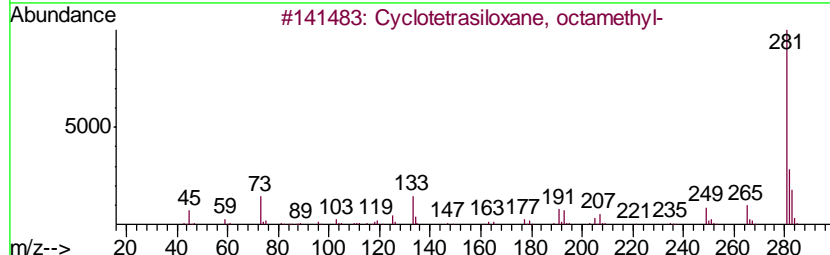
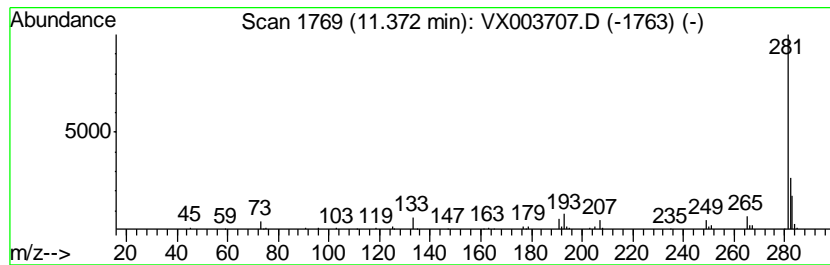
TIC Library : C:\DATABASE\NIST11.L  
 TIC Integration Parameters: LSCINT.P

\*\*\*\*\*  
 Peak Number 3 Cyclotetrasiloxane, octamet... Concentration Rank 3

R.T.	EstConc	Area	Relative to ISTD	R.T.
11.37	5.93 ug/l	51280	1,4-Dichlorobenzene-d4	12.08

Hit#	of	Tentative ID	MW	MolForm	CAS#	Qual
1	5	Cyclotetrasiloxane, octamethyl-	296	C8H24O4Si4	000556-67-2	91
2		4H-1,2,4-Triazole-3-thiol, 4-allyl-5-(1-naphthylmethyl)-	281	C16H15N3S	031803-13-1	64
3		trans-4-(2-(5-Nitro-2-furyl)vinyl)-2-quinolinamine	281	C15H11N3O3	000847-10-9	59
4		5H-Naphtho[2,3-c]carbazole, 5-methyl-	281	C21H15N	100025-44-3	50
5		7H-Dibenzo[b,g]carbazole, 7-methyl-	281	C21H15N	003557-49-1	50



Data Path : Z:\VOASRV\HPCHEM1\MSVOA\_X\DATA\VX072618\  
Data File : VX003707.D  
Acq On : 27 Jul 2018 09:06  
Operator : JC/SP  
Sample : J4073-16  
Misc : 5.0mL/MSVOA\_X/WATER  
ALS Vial : 42 Sample Multiplier: 1

Instrument :  
MSVOA\_X  
ClientSampleId :  
RE108D1-071718RE

Quant Method : Z:\VOASRV\HPCHEM1\MSVOA\_X\METHOD\82X072418W.M  
Quant Title : SW846 8260

TIC Library : C:\DATABASE\NIST11.L  
TIC Integration Parameters: LSCINT.P

TIC Top Hit name	RT	EstConc	Units	Response	--Internal Standard--			
					#	RT	Resp	Conc
Cyclotrisiloxane,...	9.34	6.0	ug/l	47731	3	10.12	397626	50.0
Cyclotetrasiloxan...	11.37	5.9	ug/l	51280	4	12.08	432427	50.0