

Data Path : Z:\voasrv\HPCHEM1\MSVOA\_X\Data\VX072824\  
 Data File : VX042654.D  
 Acq On : 27 Jul 2024 21:55  
 Operator : JC/MD  
 Sample : P3388-04 50X  
 Misc : 5.0mL/MSVOA\_X/WATER  
 ALS Vial : 14 Sample Multiplier: 1

Instrument :  
 MSVOA\_X  
 ClientSampleId :

Quant Time: Jul 29 04:24:19 2024  
 Quant Method : Z:\voasrv\HPCHEM1\MSVOA\_X\Method\SFAMXMLM072624WMA.M  
 Quant Title : VOC Analysis  
 QLast Update : Mon Jul 29 03:03:42 2024  
 Response via : Initial Calibration

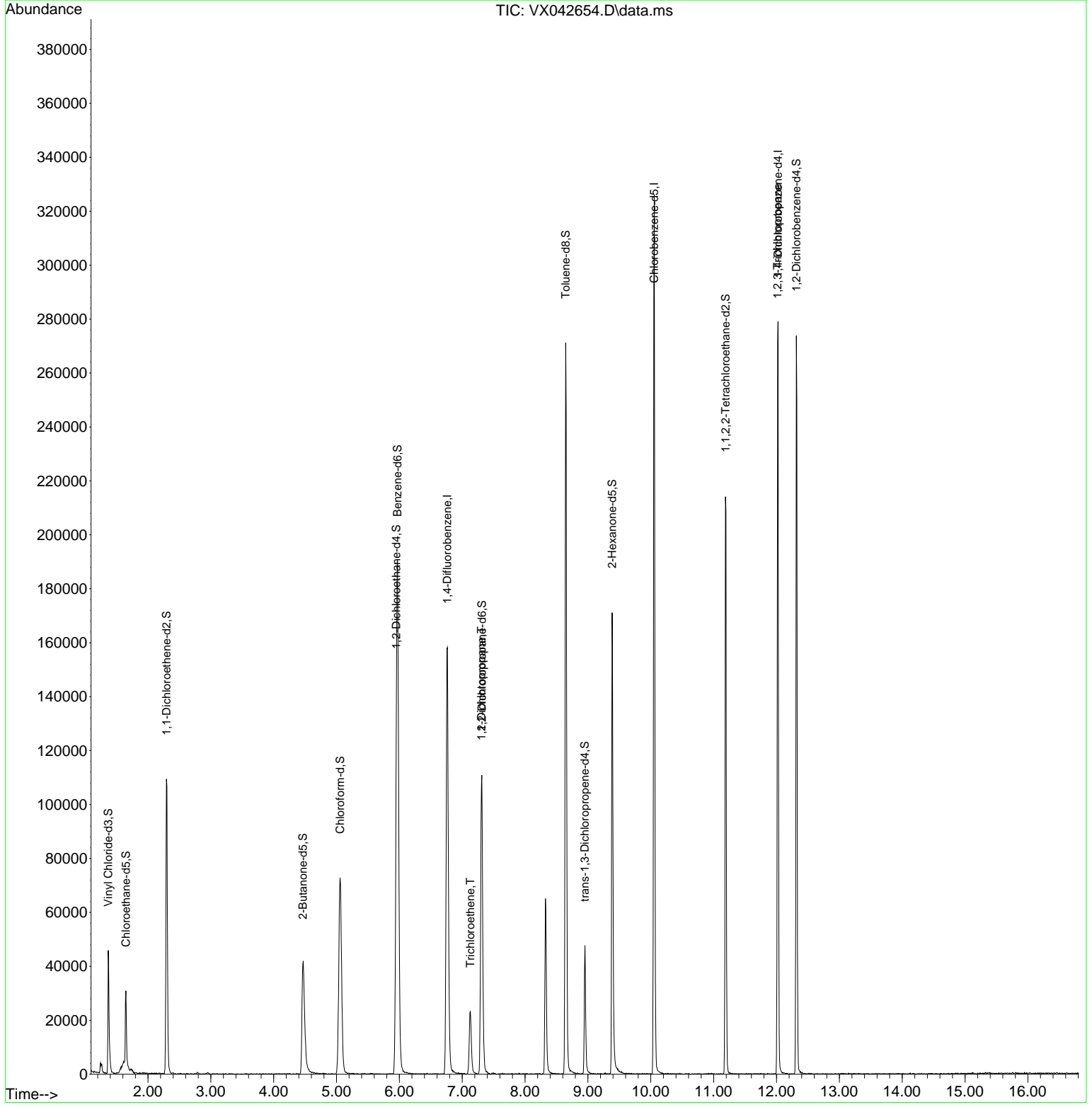
Compound	R. T.	QI on	Response	Conc	Units	Dev(Min)
<b>Internal Standards</b>						
1) 1,4-Difluorobenzene	6.763	114	164734	50.000	ug/L	0.00
28) Chlorobenzene-d5	10.055	117	151740	50.000	ug/L	0.00
58) 1,4-Dichlorobenzene-d4	12.024	152	58620	50.000	ug/L	0.00
<b>System Monitoring Compounds</b>						
4) Vinyl Chloride-d3	1.368	65	36629	36.599	ug/L	0.00
Spike Amount	50.000	Range	60 - 135	Recovery	=	73.200%
7) Chloroethane-d5	1.648	69	16946	41.090	ug/L	0.00
Spike Amount	50.000	Range	70 - 130	Recovery	=	82.180%
11) 1,1-Dichloroethane-d2	2.294	65	19825	40.204	ug/L	0.00
Spike Amount	50.000	Range	60 - 125	Recovery	=	80.400%
21) 2-Butanone-d5	4.465	46	70590	95.165	ug/L	0.00
Spike Amount	100.000	Range	40 - 130	Recovery	=	95.160%
24) Chloroform-d	5.056	84	96215	43.922	ug/L	0.00
Spike Amount	50.000	Range	70 - 125	Recovery	=	87.840%
26) 1,2-Dichloroethane-d4	5.952	65	64850	45.887	ug/L	0.00
Spike Amount	50.000	Range	70 - 125	Recovery	=	91.780%
32) Benzene-d6	5.970	84	188107	44.667	ug/L	0.00
Spike Amount	50.000	Range	70 - 125	Recovery	=	89.340%
36) 1,2-Dichloropropane-d6	7.312	67	57132	45.839	ug/L	0.00
Spike Amount	50.000	Range	70 - 120	Recovery	=	91.680%
41) Toluene-d8	8.647	98	162756	43.104	ug/L	0.00
Spike Amount	50.000	Range	80 - 120	Recovery	=	86.200%
43) trans-1,3-Dichloropropene	8.952	79	23719	40.666	ug/L	0.00
Spike Amount	50.000	Range	60 - 125	Recovery	=	81.340%
47) 2-Hexanone-d5	9.384	63	52088	93.473	ug/L	0.00
Spike Amount	100.000	Range	45 - 130	Recovery	=	93.470%
56) 1,1,2,2-Tetrachloroethane	11.189	84	82584	46.019	ug/L	0.00
Spike Amount	50.000	Range	65 - 120	Recovery	=	92.040%
66) 1,2-Dichlorobenzene-d4	12.317	152	56114	50.651	ug/L	0.00
Spike Amount	50.000	Range	80 - 120	Recovery	=	101.300%
<b>Target Compounds</b>						
34) Trichloroethene	7.129	95	8843	7.128	ug/L	88
37) 1,2-Dichloropropane	7.306	63	6604	5.472	ug/L #	86
61) 1,2,3-Trichloropropane	12.018	75	6998	5.160	ug/L #	64

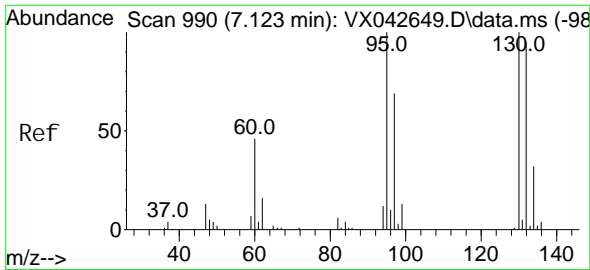
(#) = qualifier out of range (m) = manual integration (+) = signals summed

Data Path : Z:\voasrv\HPCHEM1\MSVOA\_X\Data\VX072824\  
 Data File : VX042654.D  
 Acq On : 27 Jul 2024 21:55  
 Operator : JC/MD  
 Sample : P3388-04 50X  
 Misc : 5.0mL/MSVOA\_X/WATER  
 ALS Vial : 14 Sample Multiplier: 1

**Instrument :**  
 MSVOA\_X  
**ClientSampleId :**

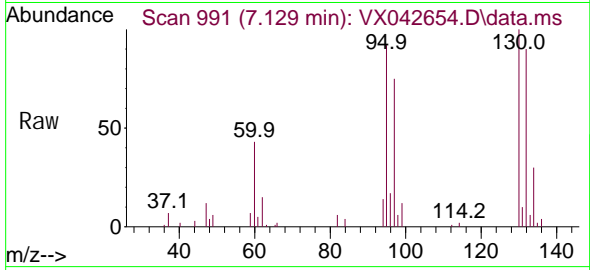
Quant Time: Jul 29 04:24:19 2024  
 Quant Method : Z:\voasrv\HPCHEM1\MSVOA\_X\Method\SFAMXLM072624WMA.M  
 Quant Title : VOC Analysis  
 QLast Update : Mon Jul 29 03:03:42 2024  
 Response via : Initial Calibration



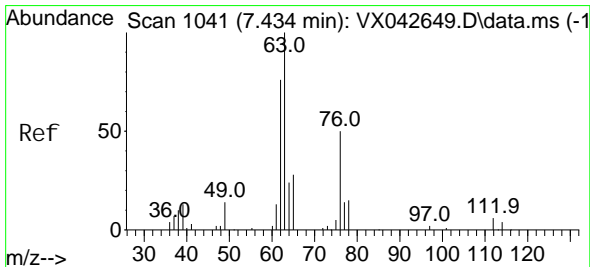
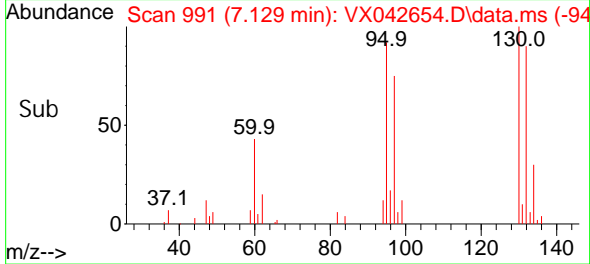
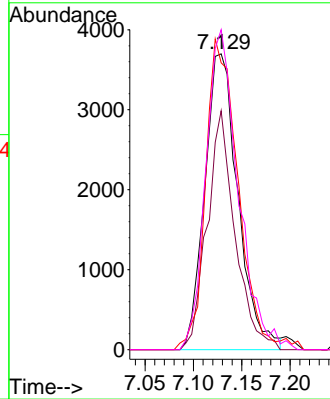


#34  
 Trichloroethene  
 Concen: 7.128 ug/L  
 RT: 7.129 min Scan# 91  
 Delta R.T. 0.006 min  
 Lab File: VX042654.D  
 Acq: 27 Jul 2024 21:55

Instrument :  
 MSVOA\_X  
 ClientSampleId :

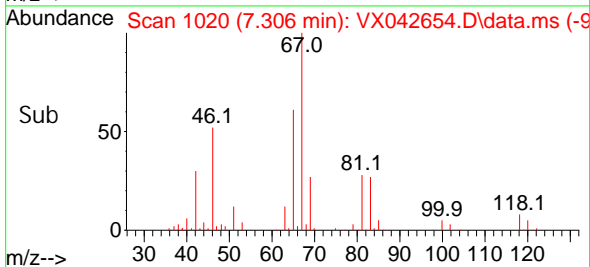
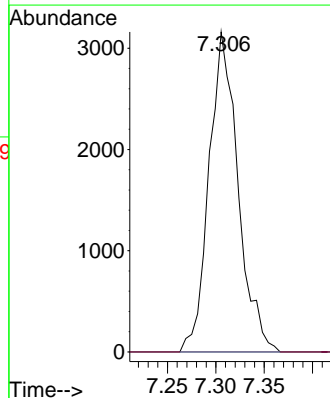
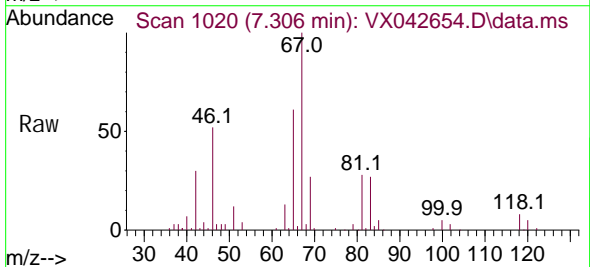


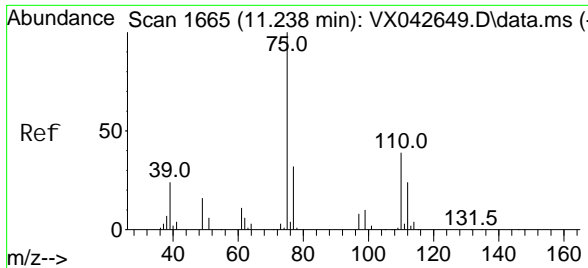
Tgt Ion: 95 Resp: 8843  
 Ion Ratio Lower Upper  
 95 100  
 97 80.7 46.3 86.1  
 132 97.0 64.3 119.5  
 130 108.2 67.0 124.4



#37  
 1,2-Dichloropropane  
 Concen: 5.472 ug/L  
 RT: 7.306 min Scan# 1020  
 Delta R.T. -0.128 min  
 Lab File: VX042654.D  
 Acq: 27 Jul 2024 21:55

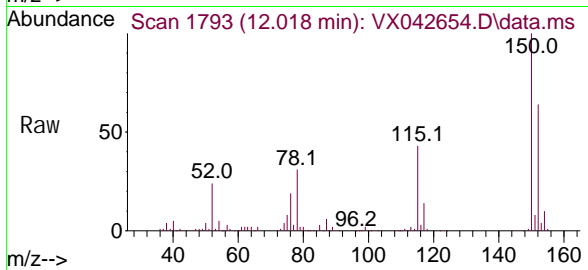
Tgt Ion: 63 Resp: 6604  
 Ion Ratio Lower Upper  
 63 100  
 112 0.0 3.7 5.5#





#61  
 1, 2, 3-Tri chl oropropane  
 Concen: 5.160 ug/L  
 RT: 12.018 min Scan# 1  
 Del ta R.T. 0.780 min  
 Lab File: VX042654.D  
 Acq: 27 Jul 2024 21:55

Instrument :  
 MSVOA\_X  
 ClientSampleId :



Tgt Ion: 75 Resp: 6998

Ion	Ratio	Lower	Upper
75	100		
77	36.6	26.2	39.4
110	3.7	33.0	49.4#

