

Data Path : Z:\voasrv\HPCHEM1\MSVOA_X\Data\VX072824\
 Data File : VX042650.D
 Acq On : 27 Jul 2024 20:22
 Operator : JC/MD
 Sample : VX0728MBL03
 Misc : 5.00g/5mL/100uL/5.00mL/MSVOA_X/MEOH
 ALS Vial : 10 Sample Multiplier: 1

Instrument :
 MSVOA_X
 ClientSampleId :
 VBLK703

Integration Parameters: LSCINT.P

Integrator: RTE
 Smoothing : OFF
 Sampling : 1
 Start Thrs : 0.2
 Stop Thrs : 0

Filtering: 5
 Min Area: 0 % of largest Peak
 Max Peaks: 100
 Peak Location: TOP

If leading or trailing edge < 100 prefer < Baseline drop else tangent >
 Peak separation: 5

Method : Z:\voasrv\HPCHEM1\MSVOA_X\Method\SFAMXML072624WMA.M
 Title : VOC Analysis

Signal : TIC: VX042650.D\data.ms

peak #	R.T. min	first scan	max scan	last scan	PK TY	peak height	corr. area	corr. % max.	% of total
1	1.246	23	26	27	rBV	3605	3532	0.68%	0.092%
2	1.368	43	46	58	rBV	41693	52363	10.06%	1.367%
3	1.648	89	92	98	rVB	28343	34672	6.66%	0.905%
4	2.294	192	198	210	rBV	96621	152275	29.26%	3.974%
5	2.764	271	275	276	rBV	221	225	0.04%	0.006%
6	2.819	282	284	285	rVV2	313	151	0.03%	0.004%
7	2.941	297	304	315	rVB2	1875	4608	0.89%	0.120%
8	3.014	315	316	320	rBB	128	150	0.03%	0.004%
9	3.050	320	322	323	rBV	156	116	0.02%	0.003%
10	3.087	324	328	334	rVV3	743	1476	0.28%	0.039%
11	3.197	345	346	348	rBV3	211	160	0.03%	0.004%
12	3.300	359	363	365	rBB	208	235	0.05%	0.006%
13	3.337	366	369	371	rBB	138	143	0.03%	0.004%
14	3.361	371	373	374	rBV	193	195	0.04%	0.005%
15	3.410	379	381	383	rVB	155	114	0.02%	0.003%
16	3.440	384	386	389	rBB	102	114	0.02%	0.003%
17	3.538	399	402	406	rBB	155	240	0.05%	0.006%
18	3.715	429	431	434	rBB	208	163	0.03%	0.004%
19	3.751	435	437	438	rBV	206	116	0.02%	0.003%
20	3.873	454	457	460	rBB	259	233	0.04%	0.006%
21	3.904	460	462	464	rBB	166	151	0.03%	0.004%
22	3.934	465	467	470	rBV	219	282	0.05%	0.007%
23	4.404	542	544	545	rBV	264	176	0.03%	0.005%
24	4.465	547	554	571	rVV	38377	116846	22.45%	3.049%
25	4.782	604	606	607	rVB	218	133	0.03%	0.003%
26	4.800	607	609	610	rBV	173	128	0.02%	0.003%
27	4.910	626	627	631	rBV2	154	175	0.03%	0.005%
28	5.056	642	651	666	rVB2	67954	210739	40.50%	5.500%
29	5.391	703	706	707	rBV	411	389	0.07%	0.010%
30	5.452	713	716	717	rBV	228	150	0.03%	0.004%
31	5.970	790	801	819	rBV2	173411	520377	100.00%	13.581%
32	6.208	836	840	841	rBV	254	292	0.06%	0.008%
33	6.391	868	870	873	rBV	222	222	0.04%	0.006%
34	6.501	886	888	890	rBV	151	150	0.03%	0.004%
35	6.592	901	903	905	rVB	214	153	0.03%	0.004%
36	6.641	908	911	914	rBV2	245	351	0.07%	0.009%

Data Path : Z:\voasrv\HPCHEM1\MSVOA_X\Data\VX072824\
 Data File : VX042650.D
 Acq On : 27 Jul 2024 20:22
 Operator : JC/MD
 Sample : VX0728MBL03
 Misc : 5.00g/5mL/100uL/5.00mL/MSVOA_X/MEOH
 ALS Vial : 10 Sample Multiplier: 1

Instrument :
 MSVOA_X
 ClientSampleId :
 VBLK703

Integration Parameters: LSCINT.P

Integrator: RTE
 Smoothing : OFF
 Sampling : 1
 Start Thrs: 0.2
 Stop Thrs : 0

Filtering: 5
 Min Area: 0 % of largest Peak
 Max Peaks: 100
 Peak Location: TOP

If leading or trailing edge < 100 prefer < Baseline drop else tangent >
 Peak separation: 5

Method : Z:\voasrv\HPCHEM1\MSVOA_X\Method\SFAMXML072624WMA.M
 Title : VOC Analysis

37	6.665	914	915	917	rVB	247	132	0.03%	0.003%
38	6.690	917	919	922	rBV	210	268	0.05%	0.007%
39	6.757	922	930	950	rBV	137338	333687	64.12%	8.709%
40	7.031	973	975	977	rBV	135	145	0.03%	0.004%
41	7.306	1013	1020	1036	rBV	106872	238372	45.81%	6.221%
42	7.519	1052	1055	1056	rBV	205	186	0.04%	0.005%
43	7.598	1066	1068	1072	rVB	366	352	0.07%	0.009%
44	7.653	1075	1077	1081	rVV2	219	353	0.07%	0.009%
45	7.690	1081	1083	1085	rVV	214	257	0.05%	0.007%
46	7.732	1088	1090	1091	rVB	207	131	0.03%	0.003%
47	7.763	1091	1095	1099	rBB2	228	487	0.09%	0.013%
48	7.806	1099	1102	1104	rBV	183	295	0.06%	0.008%
49	7.854	1108	1110	1112	rBV	360	312	0.06%	0.008%
50	7.921	1118	1121	1123	rVB	295	303	0.06%	0.008%
51	7.946	1123	1125	1127	rBV	225	240	0.05%	0.006%
52	8.049	1139	1142	1146	rBV2	252	318	0.06%	0.008%
53	8.080	1146	1147	1150	rVB	223	185	0.04%	0.005%
54	8.104	1150	1151	1152	rBV	274	168	0.03%	0.004%
55	8.281	1178	1180	1182	rBV2	253	184	0.04%	0.005%
56	8.324	1182	1187	1203	rVV	61864	108486	20.85%	2.831%
57	8.543	1221	1223	1228	rVB2	436	491	0.09%	0.013%
58	8.647	1234	1240	1254	rBV	238671	384393	73.87%	10.032%
59	8.952	1284	1290	1300	rBV	46576	72503	13.93%	1.892%
60	9.214	1331	1333	1336	rVB	202	236	0.05%	0.006%
61	9.275	1338	1343	1348	rBV2	1448	1930	0.37%	0.050%
62	9.385	1356	1361	1377	rBV	166798	261770	50.30%	6.832%
63	9.787	1426	1427	1431	rBV	211	291	0.06%	0.008%
64	9.842	1434	1436	1439	rVV	227	210	0.04%	0.005%
65	9.939	1449	1452	1454	rBV2	298	355	0.07%	0.009%
66	10.055	1465	1471	1486	rBV	285416	387426	74.45%	10.111%
67	10.201	1493	1495	1501	rVB3	1054	1177	0.23%	0.031%
68	10.317	1510	1514	1519	rVB2	614	1160	0.22%	0.030%
69	10.646	1564	1568	1572	rBV3	908	1460	0.28%	0.038%
70	10.714	1578	1579	1582	rBV	176	163	0.03%	0.004%
71	10.829	1597	1598	1600	rBV	211	169	0.03%	0.004%
72	10.963	1615	1620	1622	rBV2	928	1019	0.20%	0.027%
73	11.110	1643	1644	1647	rBV	161	151	0.03%	0.004%
74	11.189	1652	1657	1665	rVV	209175	278569	53.53%	7.270%
75	11.457	1698	1701	1705	rVB	875	1196	0.23%	0.031%
76	11.506	1706	1709	1710	rBV	228	198	0.04%	0.005%

Data Path : Z:\voasrv\HPCHEM1\MSVOA_X\Data\VX072824\
 Data File : VX042650.D
 Acq On : 27 Jul 2024 20:22
 Operator : JC/MD
 Sample : VX0728MBL03
 Misc : 5.00g/5mL/100uL/5.00mL/MSVOA_X/MEOH
 ALS Vial : 10 Sample Multiplier: 1

Instrument :
 MSVOA_X
 ClientSampleId :
 VBLK703

Integration Parameters: LSCINT.P

Integrator: RTE
 Smoothing : OFF Filtering: 5
 Sampling : 1 Min Area: 0 % of largest Peak
 Start Thrs: 0.2 Max Peaks: 100
 Stop Thrs : 0 Peak Location: TOP

If leading or trailing edge < 100 prefer < Baseline drop else tangent >
 Peak separation: 5

Method : Z:\voasrv\HPCHEM1\MSVOA_X\Method\SFAMXML072624WMA.M
 Title : VOC Analysis

77	11.756	1747	1750	1755	rVB2	1130	1191	0.23%	0.031%
78	11.933	1776	1779	1782	rVB	237	252	0.05%	0.007%
79	11.969	1782	1785	1789	rBV2	1221	1767	0.34%	0.046%
80	12.024	1789	1794	1803	rBV	234623	309073	59.39%	8.066%
81	12.225	1825	1827	1830	rVB	183	146	0.03%	0.004%
82	12.250	1830	1831	1833	rBV	254	177	0.03%	0.005%
83	12.317	1837	1842	1854	rBV	246742	319860	61.47%	8.348%
84	12.561	1876	1882	1883	rBV2	270	435	0.08%	0.011%
85	12.744	1910	1912	1913	rBV	248	205	0.04%	0.005%
86	12.908	1934	1939	1941	rBV	279	378	0.07%	0.010%
87	13.116	1970	1973	1978	rBV3	1590	1839	0.35%	0.048%
88	13.591	2048	2051	2057	rVB3	2283	2787	0.54%	0.073%
89	13.658	2061	2062	2065	rBV	222	264	0.05%	0.007%
90	13.780	2078	2082	2086	rBV	4288	5747	1.10%	0.150%
91	13.872	2094	2097	2100	rBV2	240	310	0.06%	0.008%
92	13.963	2109	2112	2118	rVB2	2515	3472	0.67%	0.091%
93	14.030	2121	2123	2124	rVB2	286	178	0.03%	0.005%
94	14.054	2124	2127	2130	rBV	492	525	0.10%	0.014%
95	14.426	2186	2188	2190	rBV	371	273	0.05%	0.007%
96	14.475	2194	2196	2199	rBV	220	236	0.05%	0.006%
97	14.518	2199	2203	2204	rBV	211	281	0.05%	0.007%
98	14.640	2222	2223	2225	rVB	236	132	0.03%	0.003%
99	14.743	2238	2240	2241	rBV	256	226	0.04%	0.006%
100	15.085	2294	2296	2297	rBV	347	245	0.05%	0.006%

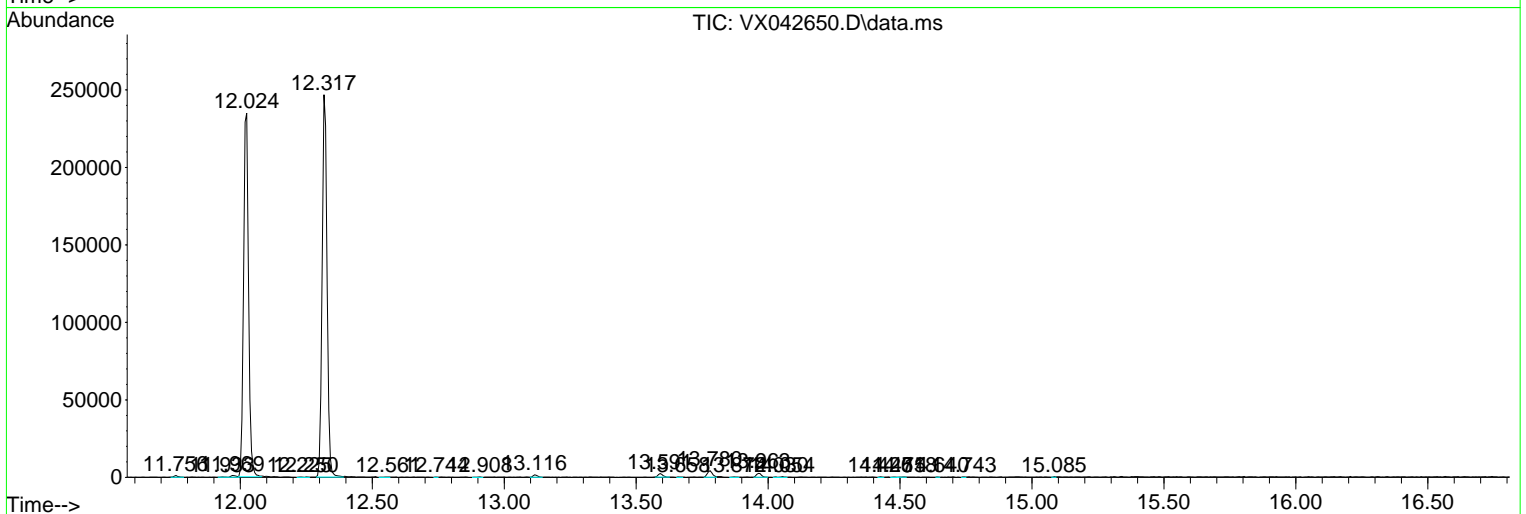
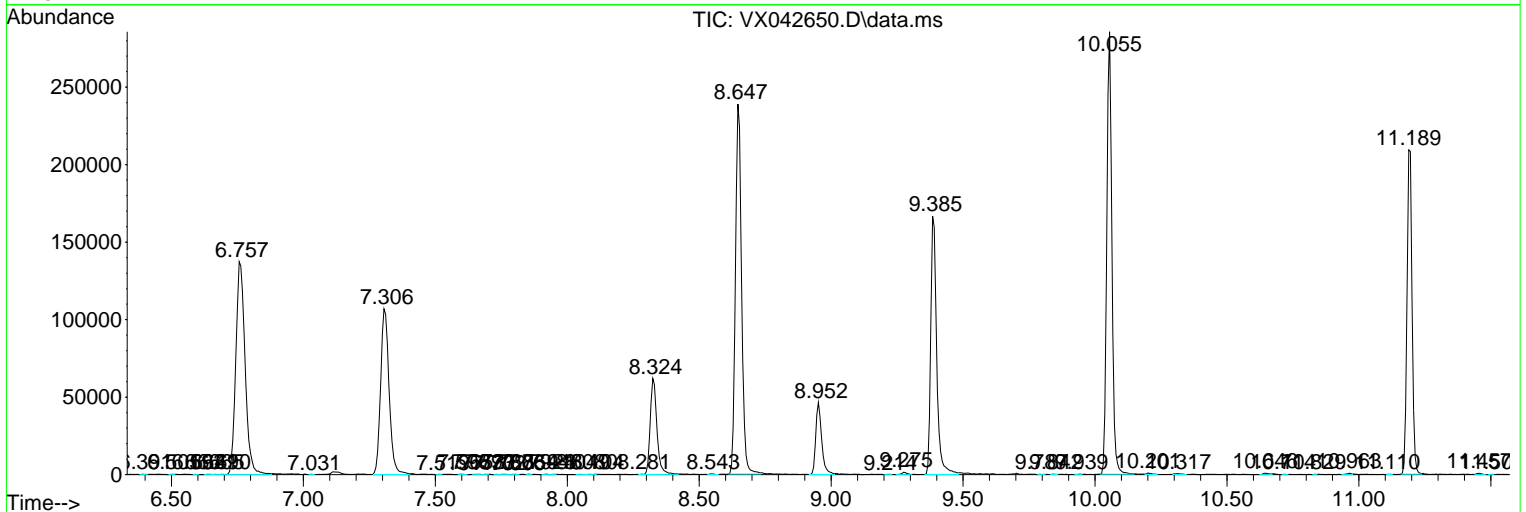
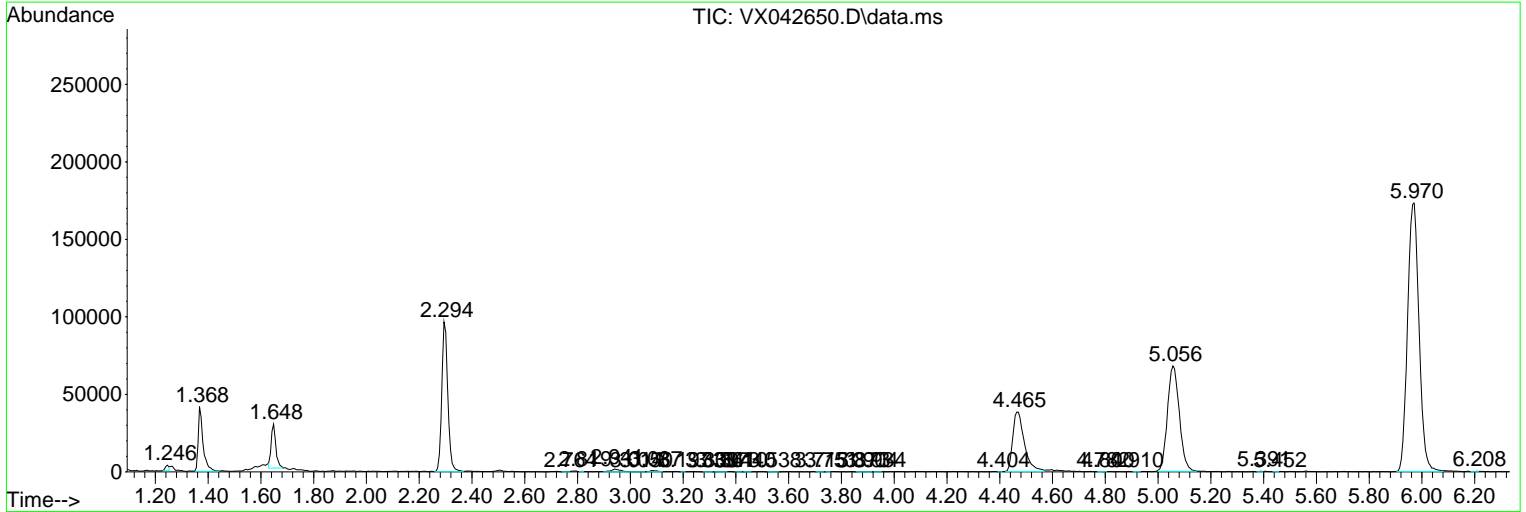
Sum of corrected areas: 3831722

Data Path : Z:\voasrv\HPCHEM1\MSVOA_X\Data\VX072824\
 Data File : VX042650.D
 Acq On : 27 Jul 2024 20:22
 Operator : JC/MD
 Sample : VX0728MBL03
 Misc : 5.00g/5mL/100uL/5.00mL/MSVOA_X/MEOH
 ALS Vial : 10 Sample Multiplier: 1

Instrument :
 MSVOA_X
 ClientSampleId :
 VBLK703

Quant Method : Z:\voasrv\HPCHEM1\MSVOA_X\Method\SFAMXML072624WMA.M
 Quant Title : VOC Analysis

TIC Library : C:\Database\NIST20.L
 TIC Integration Parameters: LSCINT.P



Library Search Compound Report

Data Path : Z:\voasrv\HPCHEM1\MSVOA_X\Data\VX072824\
Data File : VX042650.D
Acq On : 27 Jul 2024 20:22
Operator : JC/MD
Sample : VX0728MBL03
Misc : 5.00g/5mL/100uL/5.00mL/MSVOA_X/MEOH
ALS Vial : 10 Sample Multiplier: 1

Instrument :
MSVOA_X
ClientSampleId :
VBLK703

Quant Method : Z:\voasrv\HPCHEM1\MSVOA_X\Method\SFAMXML072624WMA.M
Quant Title : VOC Analysis

TIC Library : C:\Database\NIST20.L
TIC Integration Parameters: LSCINT.P

No Library Search Compounds Detected

Data Path : Z:\voasrv\HPCHEM1\MSVOA_X\Data\VX072824\
Data File : VX042650.D
Acq On : 27 Jul 2024 20:22
Operator : JC/MD
Sample : VX0728MBL03
Misc : 5.00g/5mL/100uL/5.00mL/MSVOA_X/MEOH
ALS Vial : 10 Sample Multiplier: 1

Instrument :
MSVOA_X
ClientSampleId :
VBLK703

Quant Method : Z:\voasrv\HPCHEM1\MSVOA_X\Method\SFAMXML072624WMA.M
Quant Title : VOC Analysis

TIC Library : C:\Database\NIST20.L
TIC Integration Parameters: LSCINT.P

TIC Top Hit name	RT	EstConc	Units	Response	--Internal Standard--			
					#	RT	Resp	Conc
