

Data Path : Z:\VOASRV\HPCHEM1\MSVOA X\DATA\ VX072920\
 Data File : VX017671.D
 Acq On : 29 Jul 2020 15:19
 Operator : JC/SP
 Sample : L3489-15RE
 Misc : 5.0mL/MSVOA X/WATER
 ALS Vial : 8 Sample Multiplier: 1

Instrument :
 MSVOA_X
 ClientSampleId :

Quant Time: Jul 30 04:37:13 2020
 Quant Method : Z:\VOASRV\HPCHEM1\MSVOA_X\METHOD\82X072320W.M
 Quant Title : SW846 8260
 QLast Update : Fri Jul 24 05:48:09 2020
 Response via : Initial Calibration

Internal Standards	R.T.	QIon	Response	Conc	Units	Dev(Min)
1) Pentafluorobenzene	5.63	168	478099	50.00	ug/l	0.00
34) 1,4-Difluorobenzene	6.83	114	797038	50.00	ug/l	0.00
63) Chlorobenzene-d5	10.10	117	765587	50.00	ug/l	0.00
72) 1,4-Dichlorobenzene-d4	12.06	152	436423	50.00	ug/l	0.00

System Monitoring Compounds

33) 1,2-Dichloroethane-d4	6.03	65	325642	53.02	ug/l	0.00
Spiked Amount	50.000		Recovery	=	106.04%	
35) Dibromofluoromethane	5.46	113	270404	50.73	ug/l	0.00
Spiked Amount	50.000		Recovery	=	101.46%	
50) Toluene-d8	8.70	98	914788	47.57	ug/l	0.00
Spiked Amount	50.000		Recovery	=	95.14%	
62) 4-Bromofluorobenzene	11.12	95	445869	57.94	ug/l	0.00
Spiked Amount	50.000		Recovery	=	115.88%	

Target Compounds

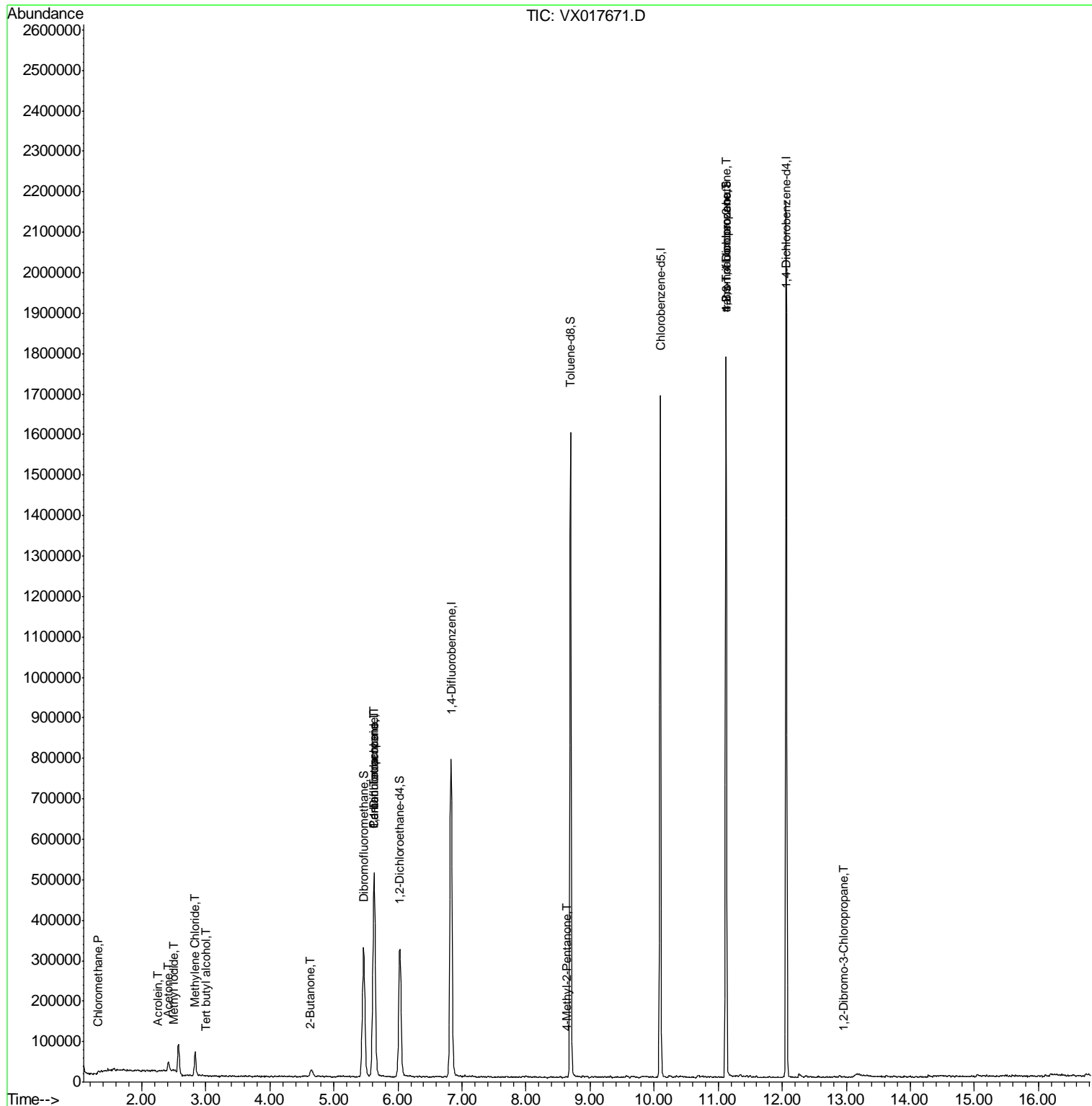
					Qvalue	
2) Dichlorodifluoromethane	1.18	85	281	Below Cal	#	42
3) Chloromethane	1.32	50	2610	0.805	ug/l	92
5) Bromomethane	1.65	94	1233	Below Cal	#	39
6) Chloroethane	1.72	64	65	Below Cal	#	1
8) Diethyl Ether	2.17	74	1041	Below Cal		96
10) Methyl Iodide	2.50	142	1612	0.243	ug/l	# 87
11) Tert butyl alcohol	3.00	59	264	0.204	ug/l	# 1
13) Acrolein	2.26	56	718	4.863	ug/l	# 75
16) Acetone	2.42	43	23151	8.565	ug/l	97
20) Methylene Chloride	2.83	84	26733	4.072	ug/l	96
25) 2-Butanone	4.62	43	1060	0.276	ug/l	# 79
36) 1,1-Dichloropropene	5.63	75	34252	4.481	ug/l	# 52
38) Carbon Tetrachloride	5.62	117	48538	5.229	ug/l	# 16
51) 4-Methyl-2-Pentanone	8.62	43	2549	0.310	ug/l	# 72
76) 1,2,3-Trichloropropane	11.12	75	228621	25.466	ug/l	# 35
81) trans-1,4-Dichloro-2-buten	11.12	75	228621	64.169	ug/l	# 11
92) 1,2-Dibromo-3-Chloropropan	12.96	75	642	2.807	ug/l	# 15

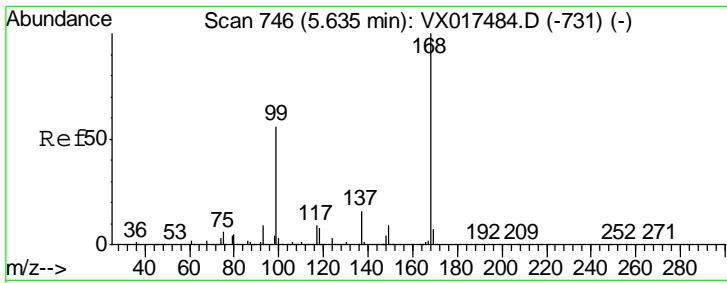
(#) = qualifier out of range (m) = manual integration (+) = signals summed

Data Path : Z:\VOASRV\HPCHEM1\MSVOA X\DATA\VX072920\
 Data File : VX017671.D
 Acq On : 29 Jul 2020 15:19
 Operator : JC/SP
 Sample : L3489-15RE
 Misc : 5.0mL/MSVOA X/WATER
 ALS Vial : 8 Sample Multiplier: 1

Instrument :
 MSVOA_X
 ClientSampled :

Quant Time: Jul 30 04:37:13 2020
 Quant Method : Z:\VOASRV\HPCHEM1\MSVOA_X\METHOD\82X072320W.M
 Quant Title : SW846 8260
 QLast Update : Fri Jul 24 05:48:09 2020
 Response via : Initial Calibration

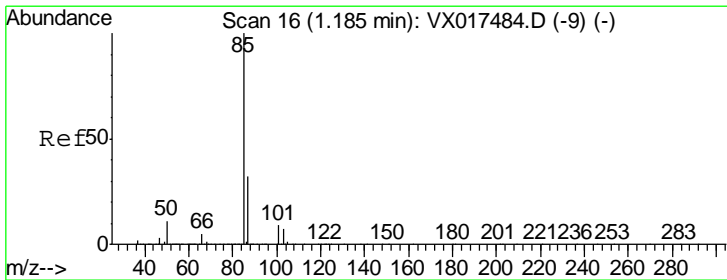
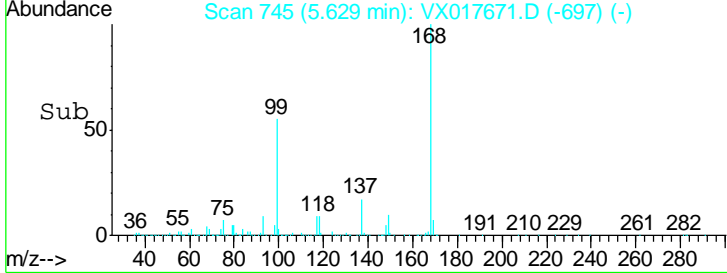
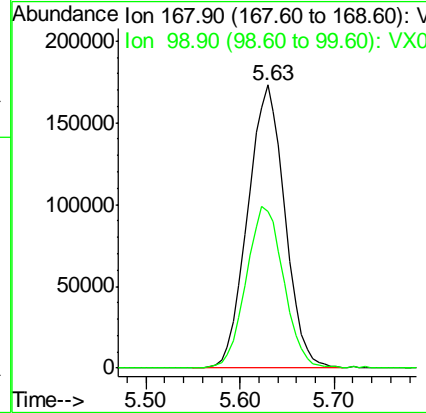
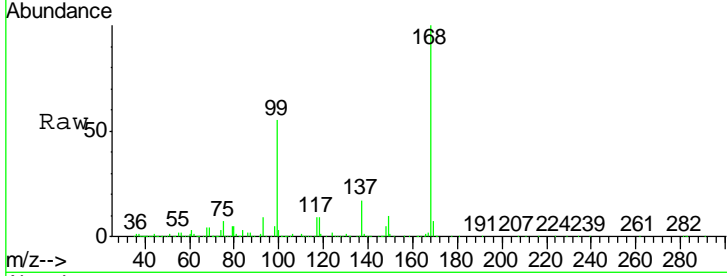




#1
 Pentafluorobenzene
 Concen: 50.000 ug/l
 RT: 5.63 min Scan# 745
 Delta R.T. -0.01 min
 Lab File: VX017671.D
 Acq: 29 Jul 2020 15:19

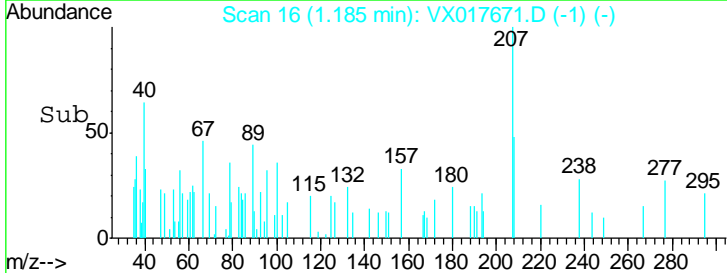
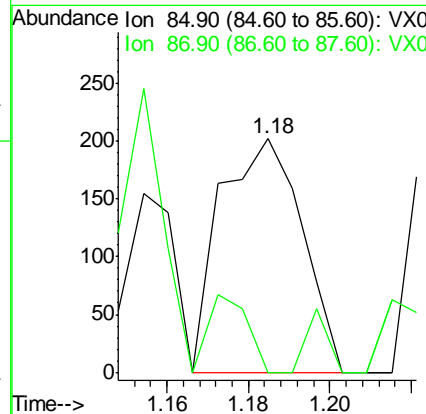
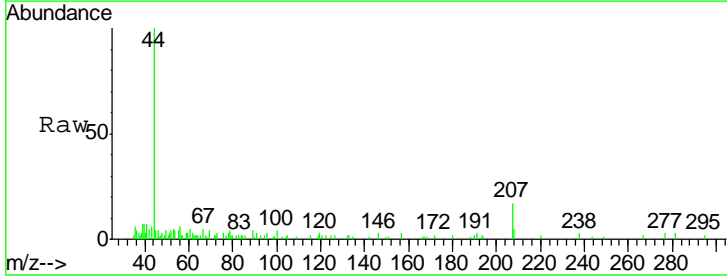
Instrument : MSVOA_X
 ClientSampled :

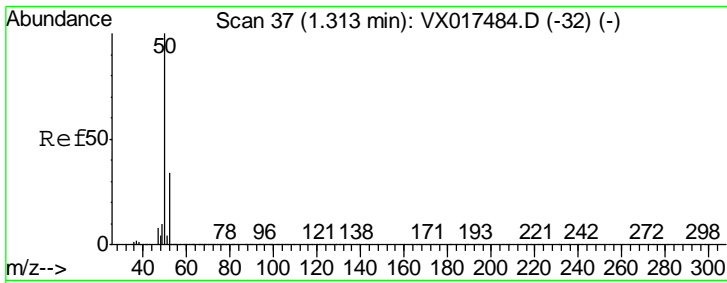
Tgt Ion	Resp	Lower	Upper
168	100		
99	55.1	43.4	65.2



#2
 Dichlorodifluoromethane
 Concen: Below Cal
 RT: 1.18 min Scan# 16
 Delta R.T. 0.00 min
 Lab File: VX017671.D
 Acq: 29 Jul 2020 15:19

Tgt Ion	Resp	Lower	Upper
85	100		
87	0.0	16.1	48.3#

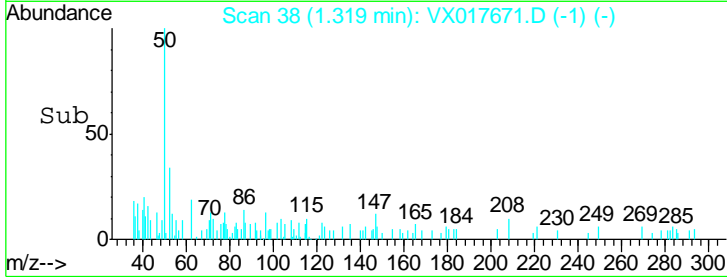
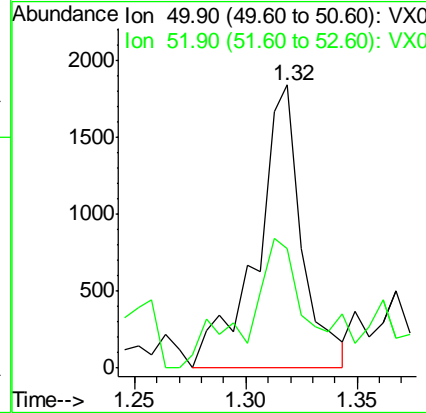
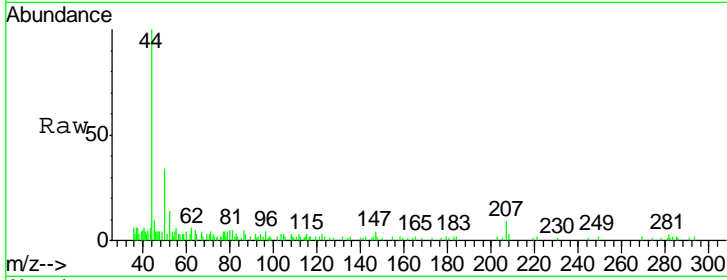




#3
 Chloromethane
 Concen: 0.805 ug/l
 RT: 1.32 min Scan# 38
 Delta R.T. 0.01 min
 Lab File: VX017671.D
 Acq: 29 Jul 2020 15:19

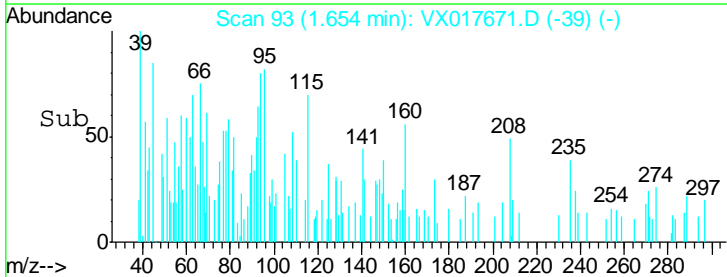
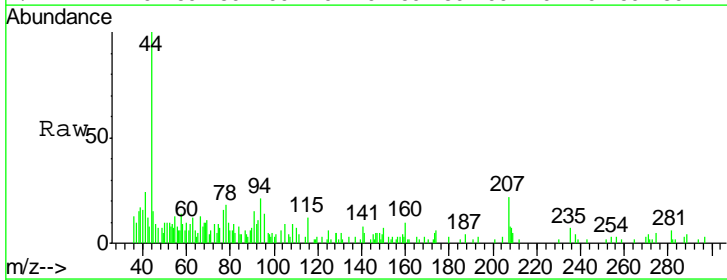
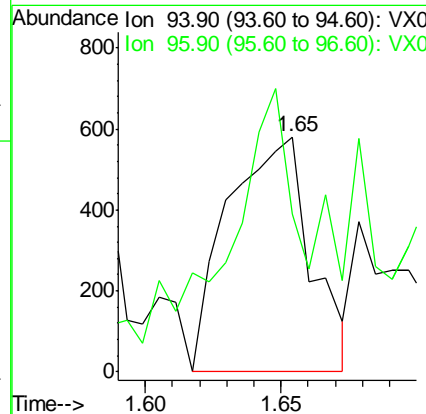
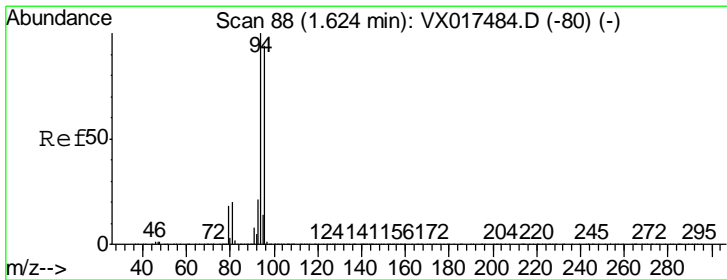
Instrument : MSVOA_X
 ClientSampled :

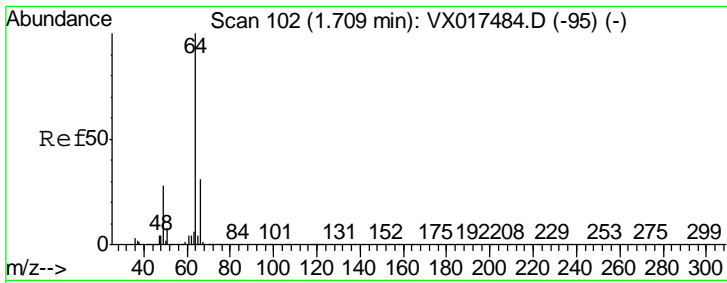
Tgt Ion:	50	Resp:	2610
Ion Ratio	Lower	Upper	
50	100		
52	37.1	25.9	38.9



#5
 Bromomethane
 Concen: Below Cal
 RT: 1.65 min Scan# 93
 Delta R.T. 0.03 min
 Lab File: VX017671.D
 Acq: 29 Jul 2020 15:19

Tgt Ion:	94	Resp:	1233
Ion Ratio	Lower	Upper	
94	100		
96	34.6	74.1	111.1#

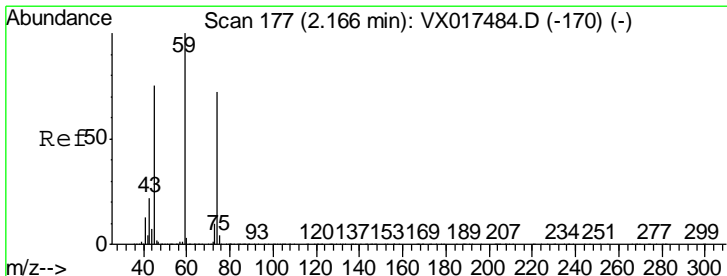
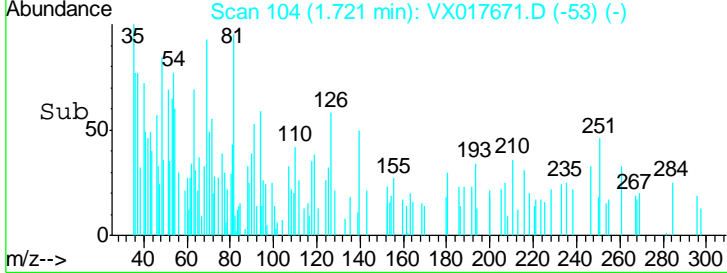
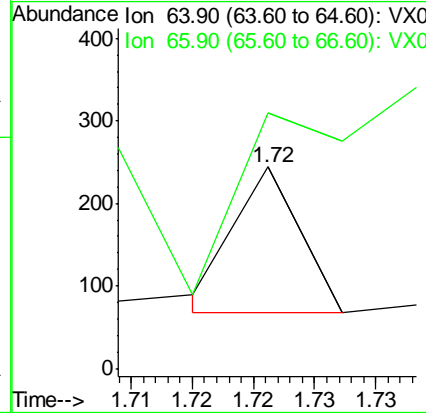
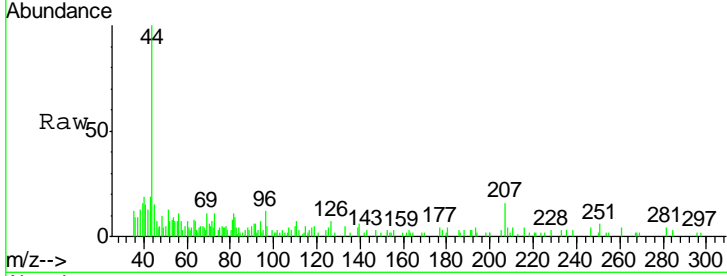




#6
 Chloroethane
 Concen: Below Cal
 RT: 1.72 min Scan# 104
 Delta R.T. 0.01 min
 Lab File: VX017671.D
 Acq: 29 Jul 2020 15:19

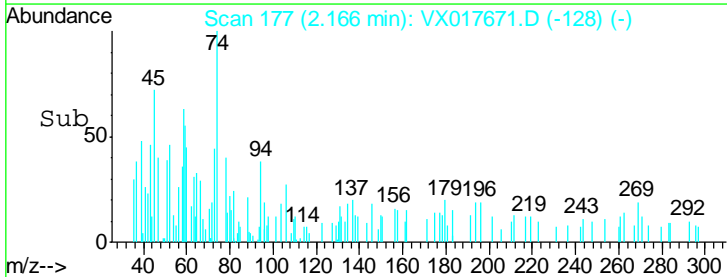
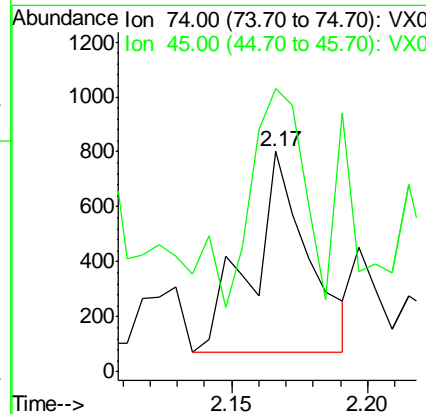
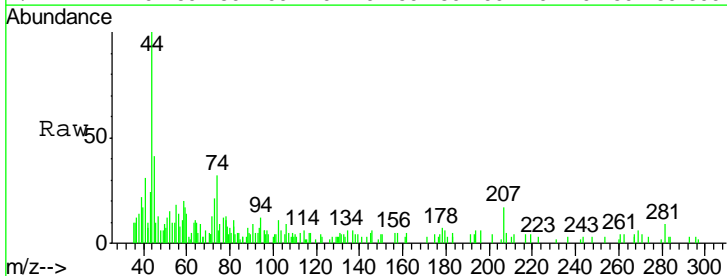
Instrument :
 MSVOA_X
 ClientSampled :

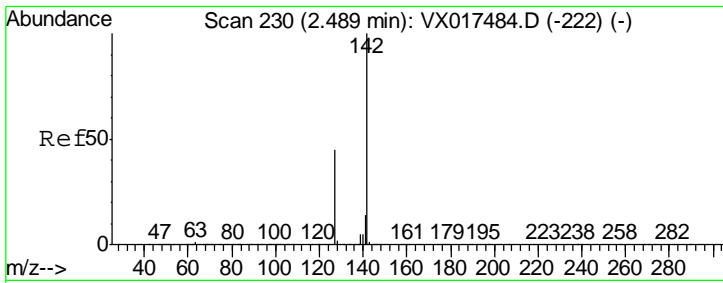
Tgt Ion: 64 Resp: 65
 Ion Ratio Lower Upper
 64 100
 66 89.8 24.9 37.3#



#8
 Diethyl Ether
 Concen: Below Cal
 RT: 2.17 min Scan# 177
 Delta R.T. 0.00 min
 Lab File: VX017671.D
 Acq: 29 Jul 2020 15:19

Tgt Ion: 74 Resp: 1041
 Ion Ratio Lower Upper
 74 100
 45 98.1 50.8 152.5

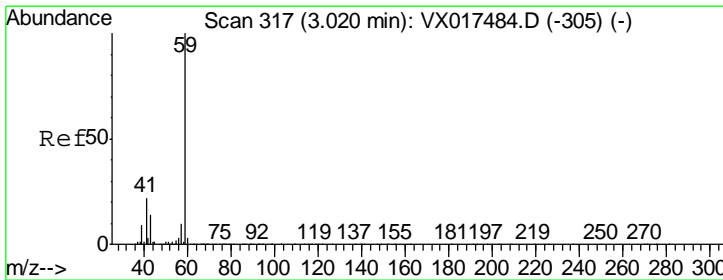
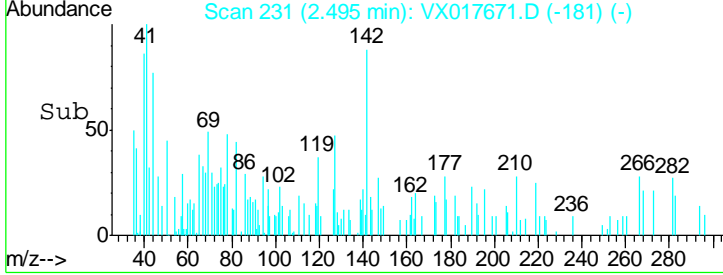
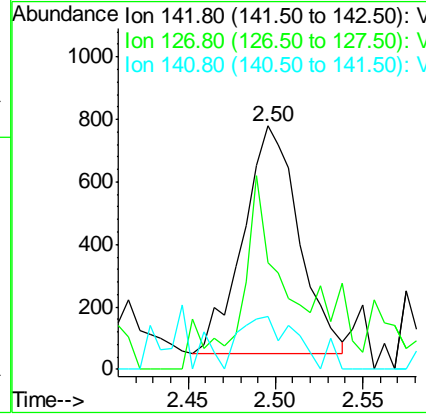
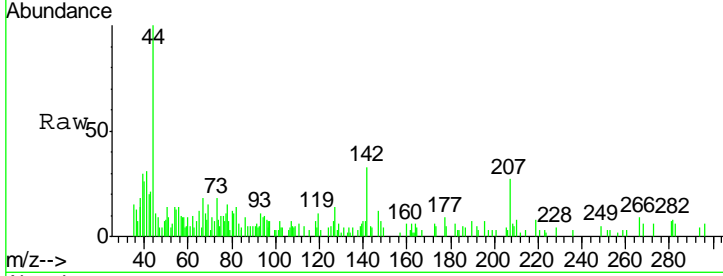




#10
 Methyl Iodide
 Concen: 0.243 ug/l
 RT: 2.50 min Scan# 231
 Delta R.T. 0.01 min
 Lab File: VX017671.D
 Acq: 29 Jul 2020 15:19

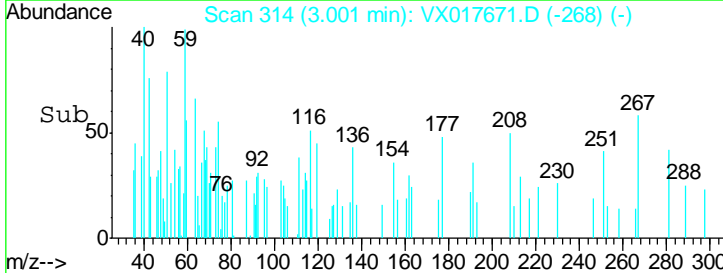
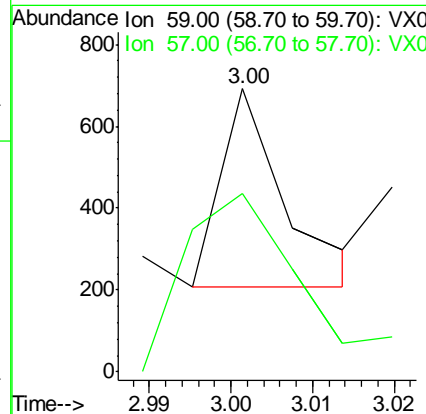
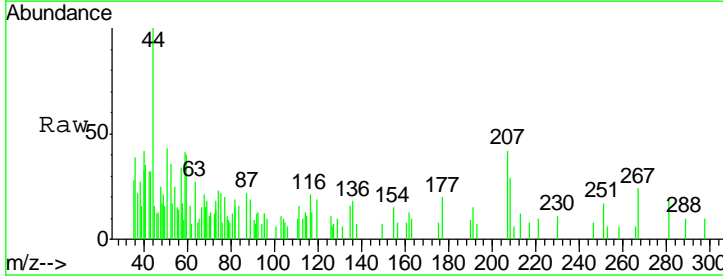
Instrument :
 MSVOA_X
 ClientSampled :

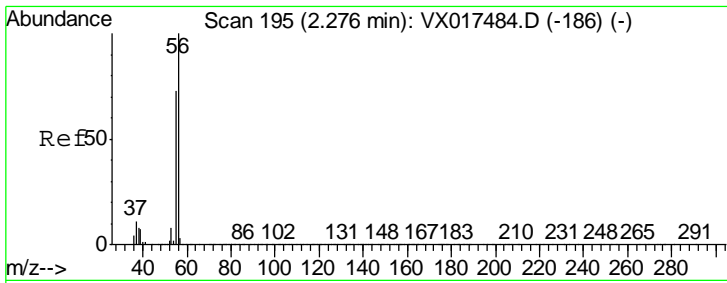
Tgt Ion	Resp	Lower	Upper
142	100		
127	37.7	35.9	53.9
141	22.3	11.4	17.0#



#11
 Tert butyl alcohol
 Concen: 0.204 ug/l
 RT: 3.00 min Scan# 314
 Delta R.T. -0.02 min
 Lab File: VX017671.D
 Acq: 29 Jul 2020 15:19

Tgt Ion	Resp	Lower	Upper
59	100		
57	164.8	8.6	12.8#

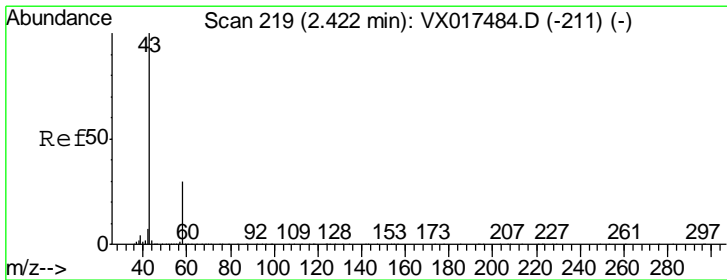
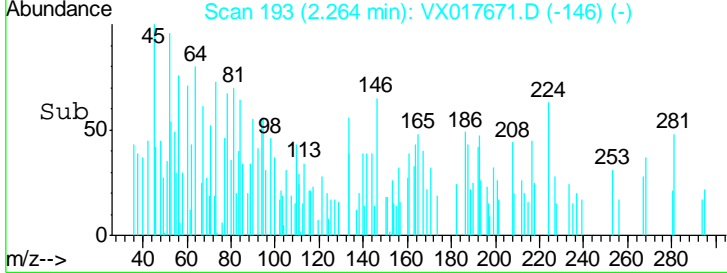
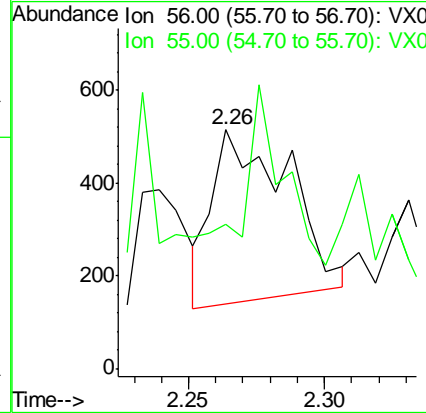
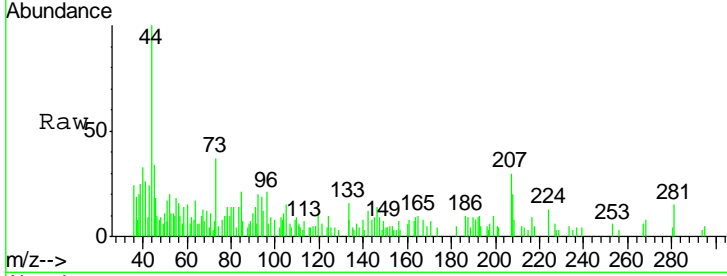




#13
 Acrolein
 Concen: 4.863 ug/l
 RT: 2.26 min Scan# 193
 Delta R.T. -0.01 min
 Lab File: VX017671.D
 Acq: 29 Jul 2020 15:19

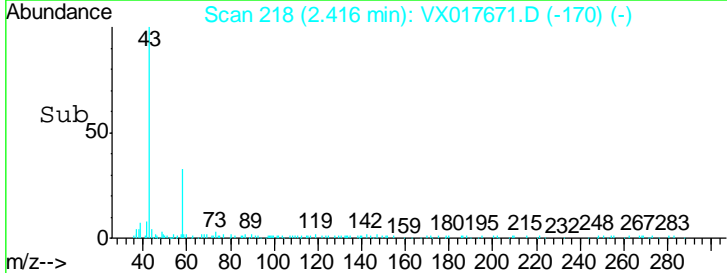
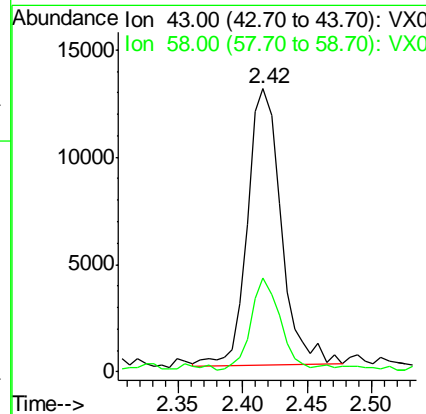
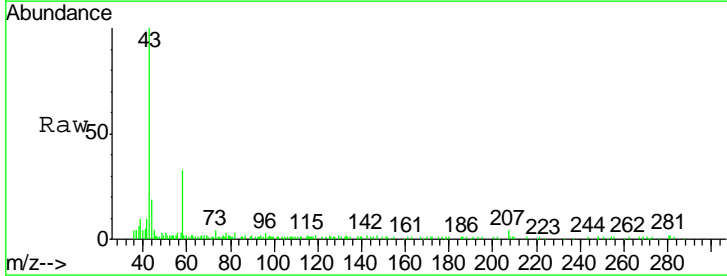
Instrument : MSVOA_X
 ClientSampled :

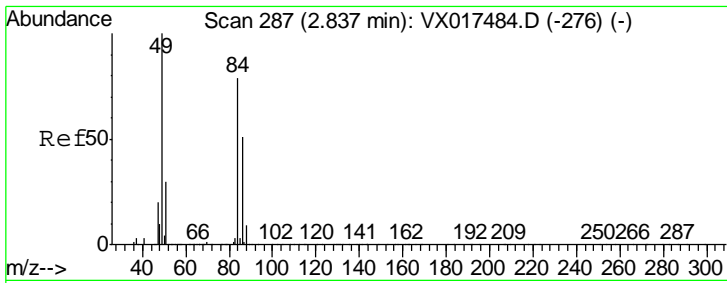
Tgt Ion: 56 Resp: 718
 Ion Ratio Lower Upper
 56 100
 55 51.4 57.4 86.2#



#16
 Acetone
 Concen: 8.565 ug/l
 RT: 2.42 min Scan# 218
 Delta R.T. -0.01 min
 Lab File: VX017671.D
 Acq: 29 Jul 2020 15:19

Tgt Ion: 43 Resp: 23151
 Ion Ratio Lower Upper
 43 100
 58 32.1 24.2 36.4

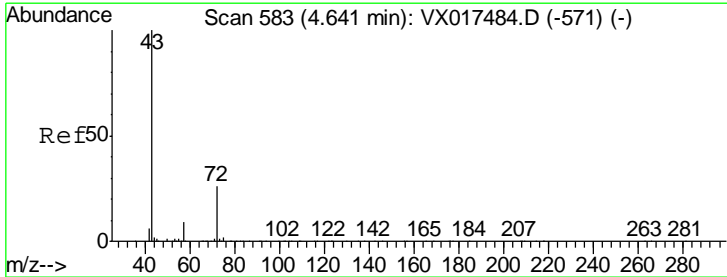
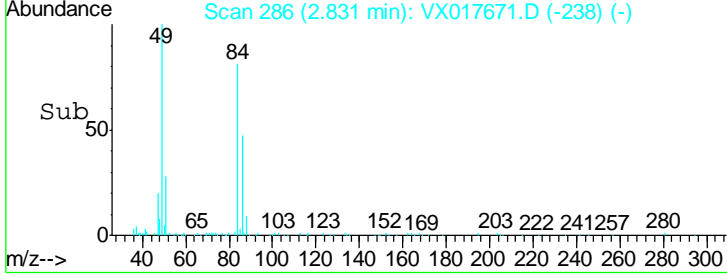
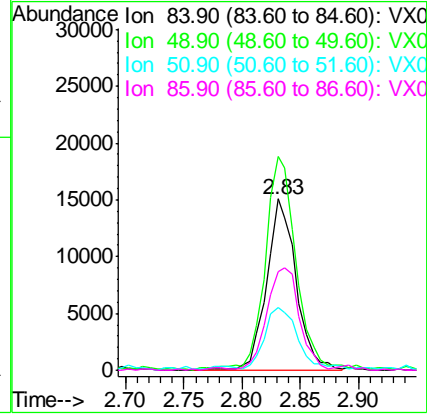
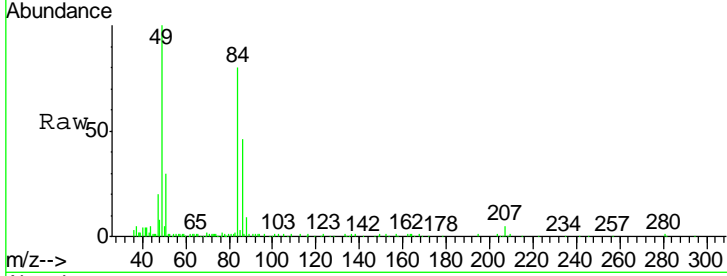




#20
 Methylene Chloride
 Concen: 4.072 ug/l
 RT: 2.83 min Scan# 286
 Delta R.T. -0.01 min
 Lab File: VX017671.D
 Acq: 29 Jul 2020 15:19

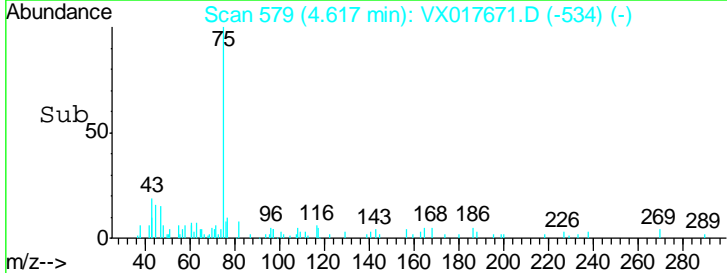
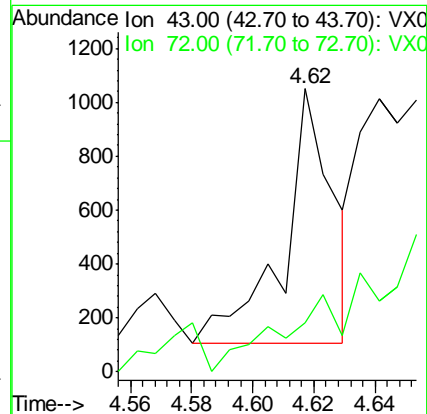
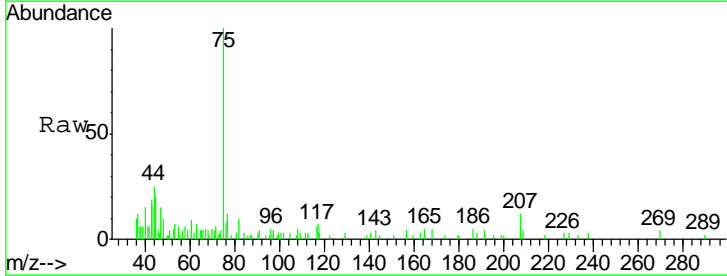
Instrument :
 MSVOA_X
 ClientSampled :

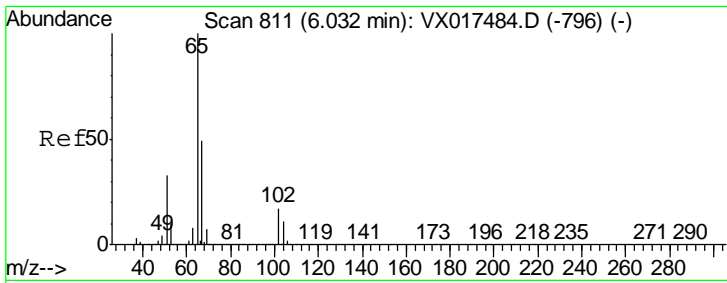
Tgt Ion	Resp	Lower	Upper
84	26733		
49	124.9	100.3	150.5
51	35.4	30.5	45.7
86	56.9	51.1	76.7



#25
 2-Butanone
 Concen: 0.276 ug/l
 RT: 4.62 min Scan# 579
 Delta R.T. -0.02 min
 Lab File: VX017671.D
 Acq: 29 Jul 2020 15:19

Tgt Ion	Resp	Lower	Upper
43	1060		
72	13.1	19.0	28.4#

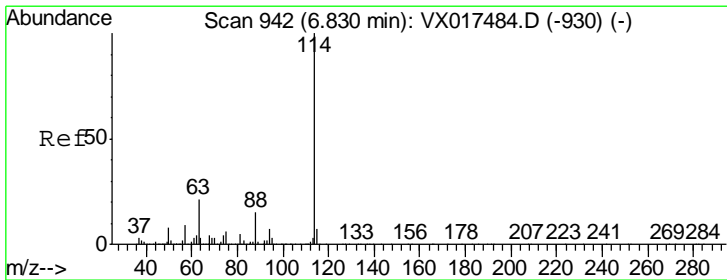
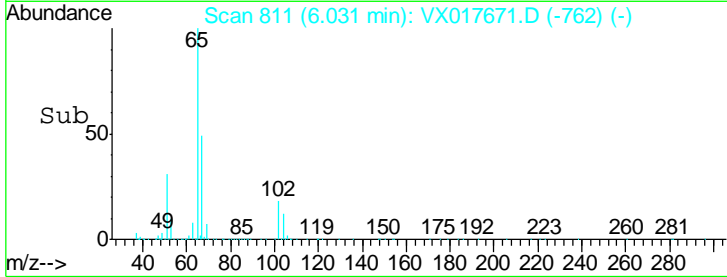
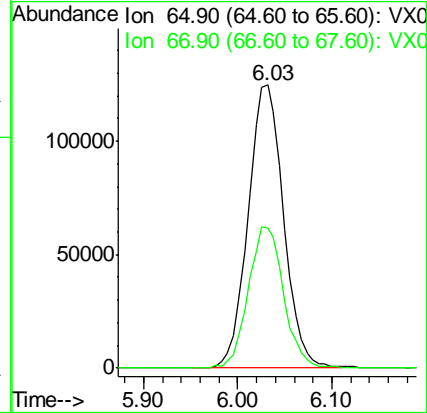
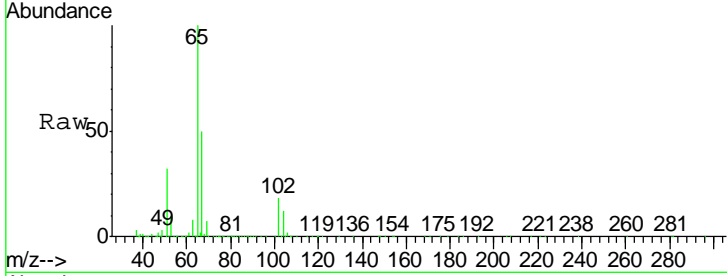




#33
 1,2-Dichloroethane-d4
 Concen: 53.024 ug/l
 RT: 6.03 min Scan# 811
 Delta R.T. -0.00 min
 Lab File: VX017671.D
 Acq: 29 Jul 2020 15:19

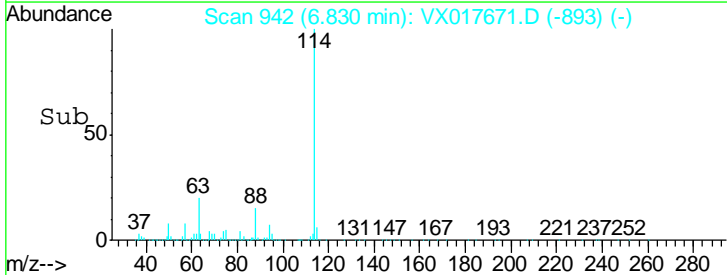
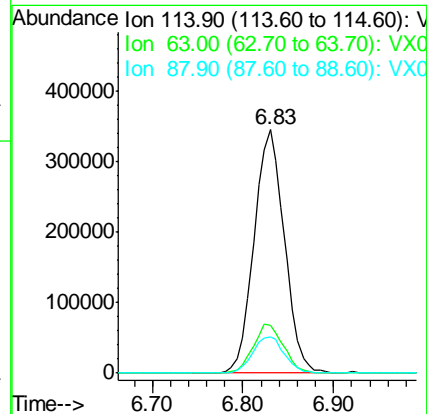
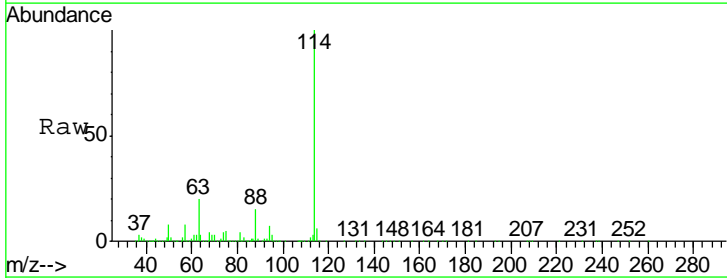
Instrument :
 MSVOA_X
 ClientSampled :

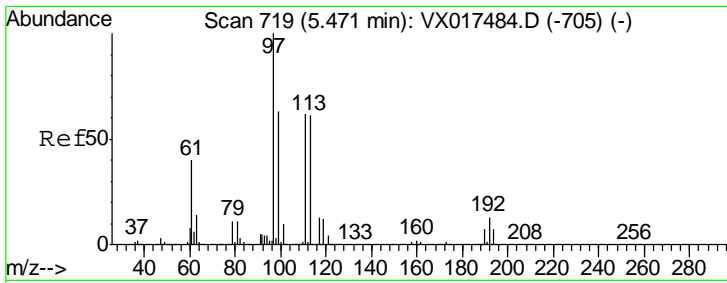
Tgt Ion	Resp	Lower	Upper
65	100		
67	50.3	0.0	102.8



#34
 1,4-Difluorobenzene
 Concen: 50.000 ug/l
 RT: 6.83 min Scan# 942
 Delta R.T. -0.00 min
 Lab File: VX017671.D
 Acq: 29 Jul 2020 15:19

Tgt Ion	Resp	Lower	Upper
114	100		
63	19.7	0.0	40.6
88	14.9	0.0	33.4

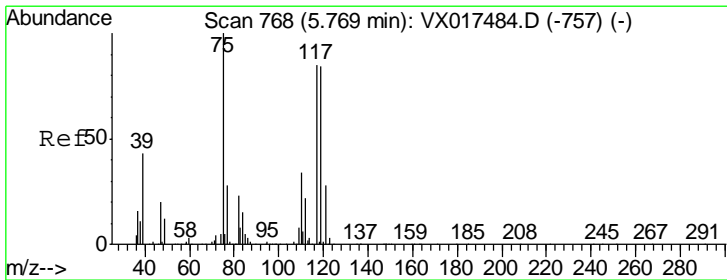
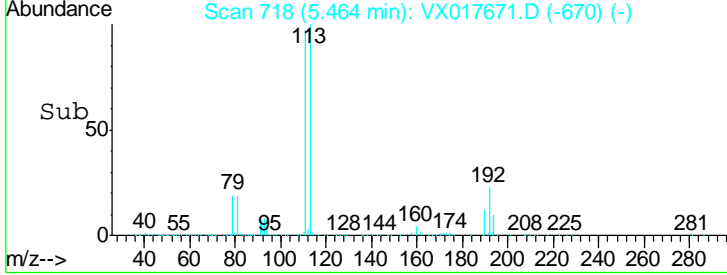
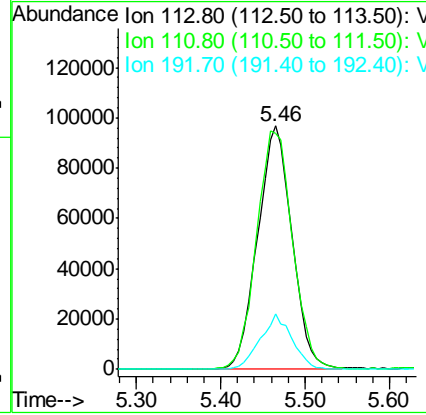
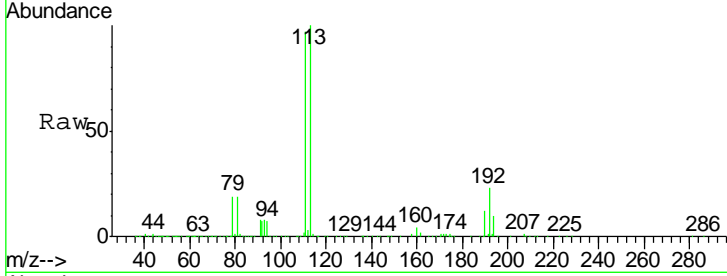




#35
 Dibromofluoromethane
 Concen: 50.726 ug/l
 RT: 5.46 min Scan# 718
 Delta R.T. -0.01 min
 Lab File: VX017671.D
 Acq: 29 Jul 2020 15:19

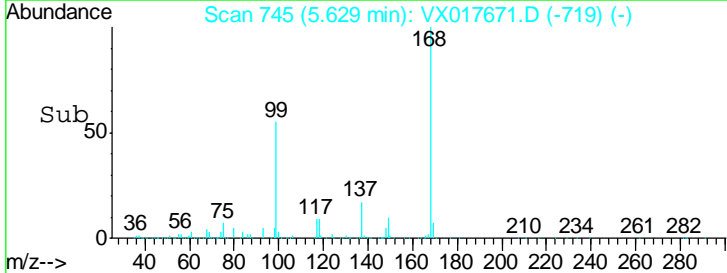
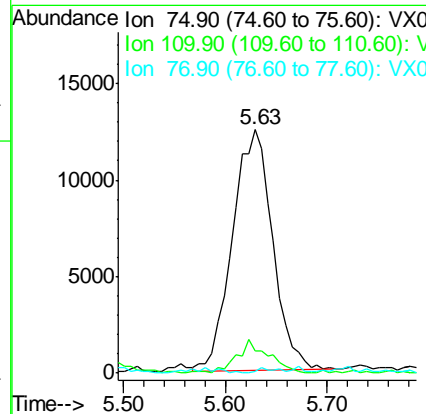
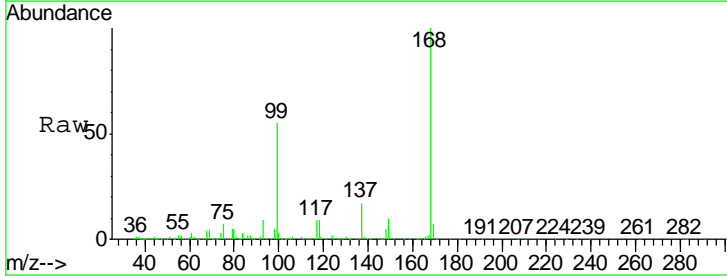
Instrument :
 MSVOA_X
 ClientSampled :

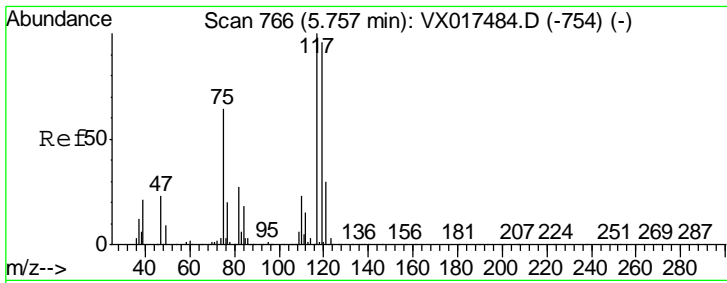
Tgt Ion	Resp	Lower	Upper
113	270404		
111	102.8	80.7	121.1
192	21.2	16.9	25.3



#36
 1,1-Dichloropropene
 Concen: 4.481 ug/l
 RT: 5.63 min Scan# 745
 Delta R.T. -0.14 min
 Lab File: VX017671.D
 Acq: 29 Jul 2020 15:19

Tgt Ion	Resp	Lower	Upper
75	34252		
110	10.9	18.1	54.3#
77	0.7	24.6	37.0#

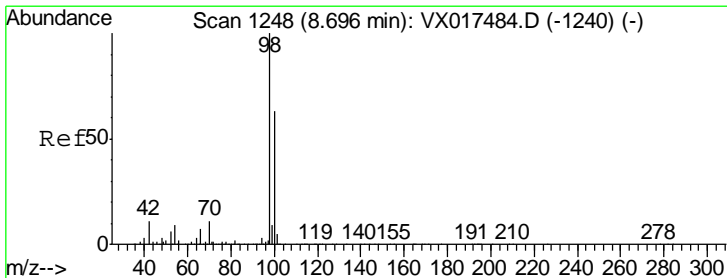
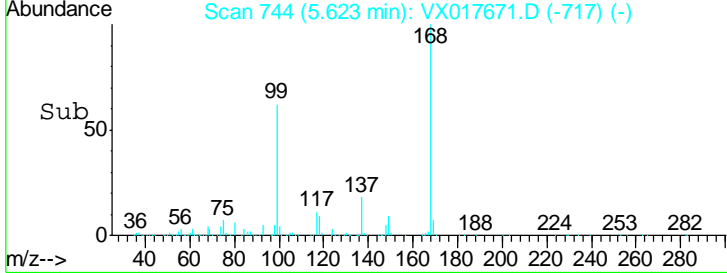
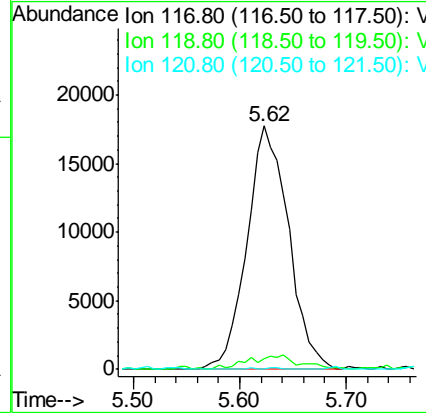
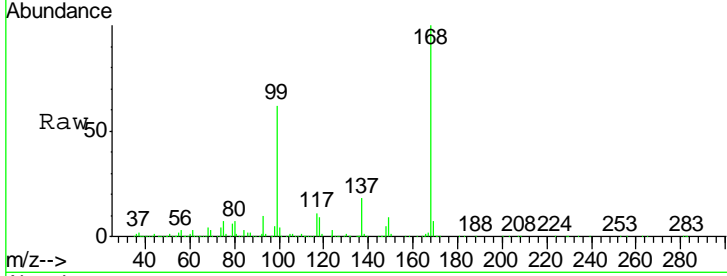




#38
 Carbon Tetrachloride
 Concen: 5.229 ug/l
 RT: 5.62 min Scan# 744
 Delta R.T. -0.13 min
 Lab File: VX017671.D
 Acq: 29 Jul 2020 15:19

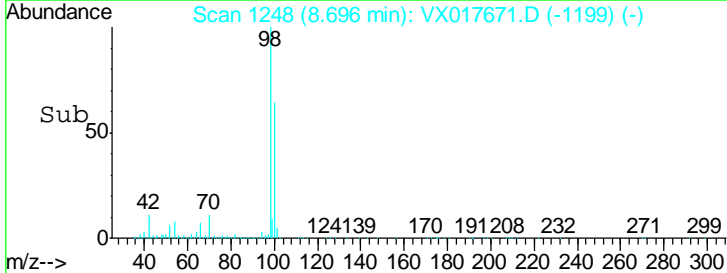
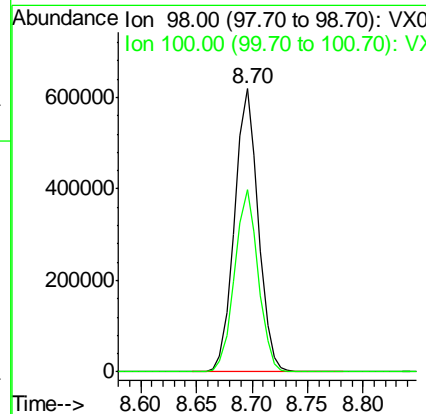
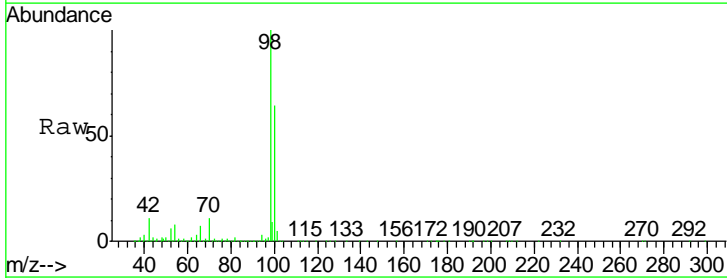
Instrument :
 MSVOA_X
 ClientSampled :

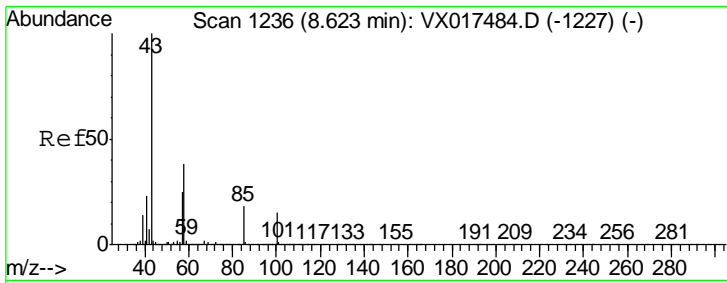
Tgt Ion	Resp	Lower	Upper
117	48538		
119	4.5	75.4	113.0#
121	0.0	24.3	36.5#



#50
 Toluene-d8
 Concen: 47.571 ug/l
 RT: 8.70 min Scan# 1248
 Delta R.T. -0.00 min
 Lab File: VX017671.D
 Acq: 29 Jul 2020 15:19

Tgt Ion	Resp	Lower	Upper
98	914788		
100	64.0	52.3	78.5

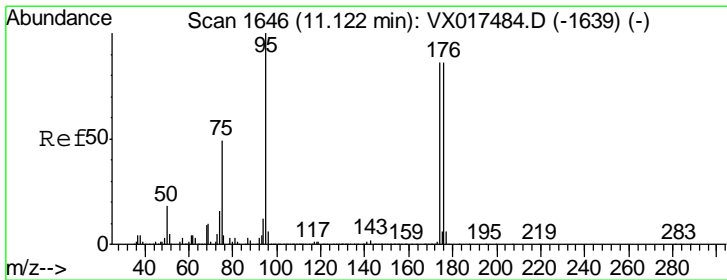
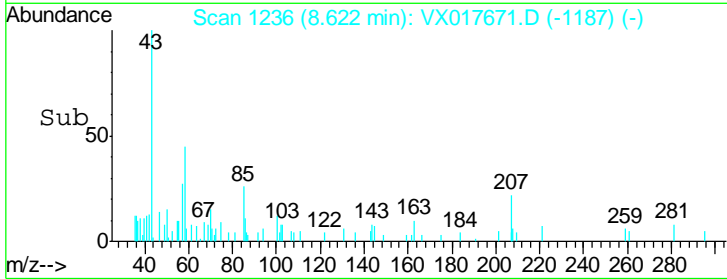
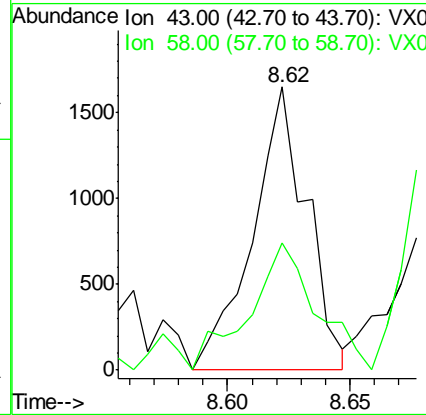
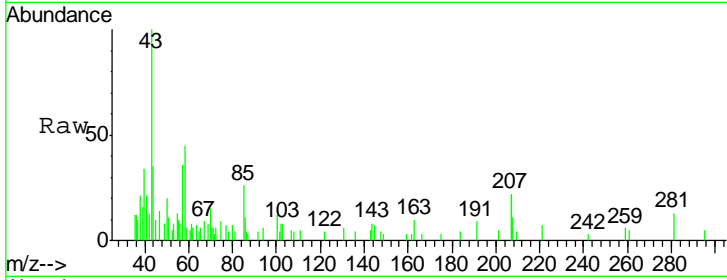




#51
 4-Methyl-2-Pentanone
 Concen: 0.310 ug/l
 RT: 8.62 min Scan# 1236
 Delta R.T. -0.00 min
 Lab File: VX017671.D
 Acq: 29 Jul 2020 15:19

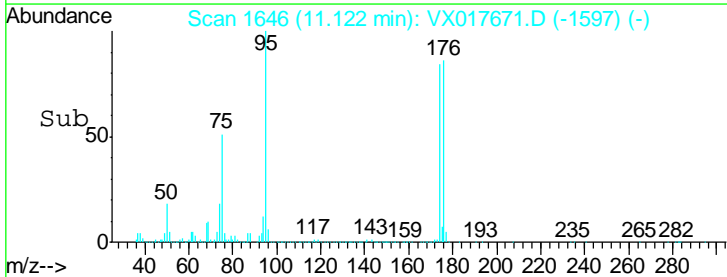
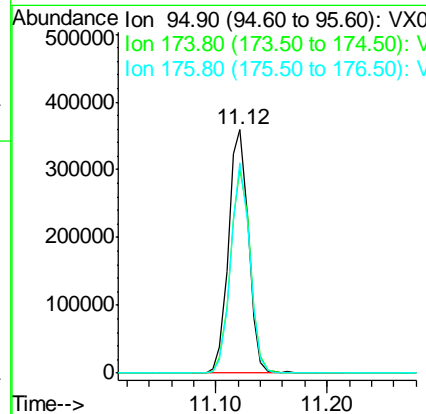
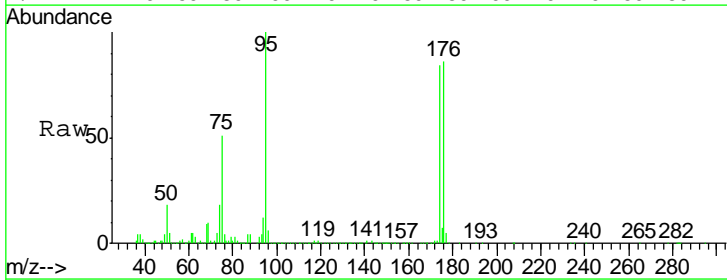
Instrument :
 MSVOA_X
 ClientSampled :

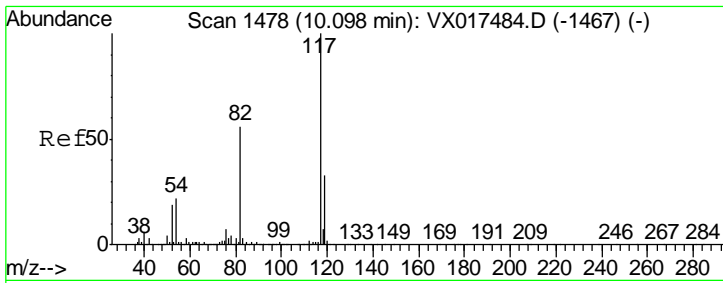
Tgt Ion	Resp	Lower	Upper
43	100		
58	55.7	31.0	46.4#



#62
 4-Bromofluorobenzene
 Concen: 57.936 ug/l
 RT: 11.12 min Scan# 1646
 Delta R.T. -0.00 min
 Lab File: VX017671.D
 Acq: 29 Jul 2020 15:19

Tgt Ion	Resp	Lower	Upper
95	100		
174	83.4	0.0	169.0
176	82.0	0.0	161.0

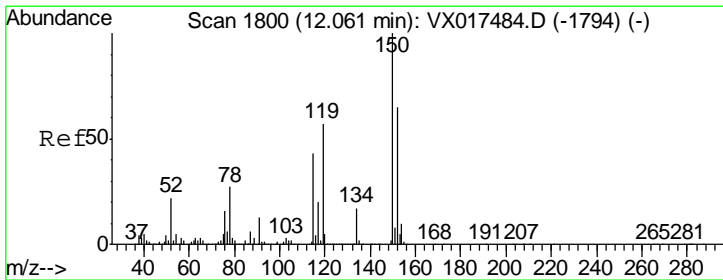
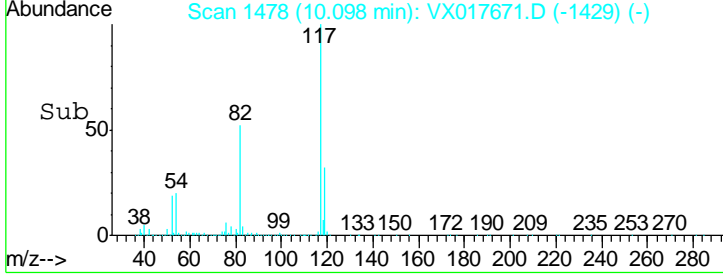
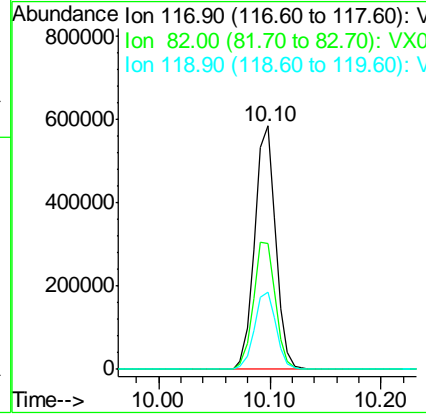
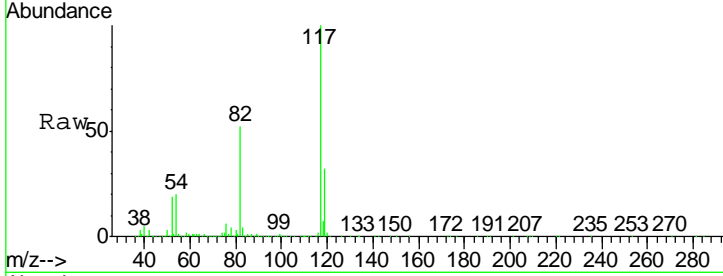




#63
 Chlorobenzene-d5
 Concen: 50.000 ug/l
 RT: 10.10 min Scan# 1478
 Delta R.T. -0.00 min
 Lab File: VX017671.D
 Acq: 29 Jul 2020 15:19

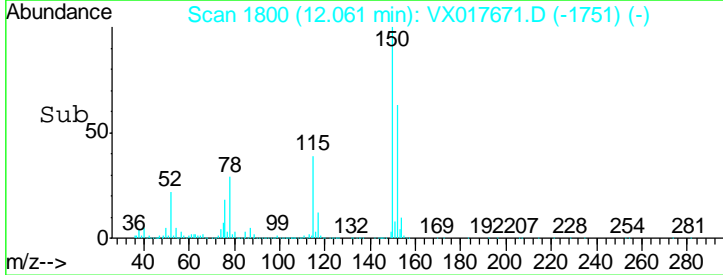
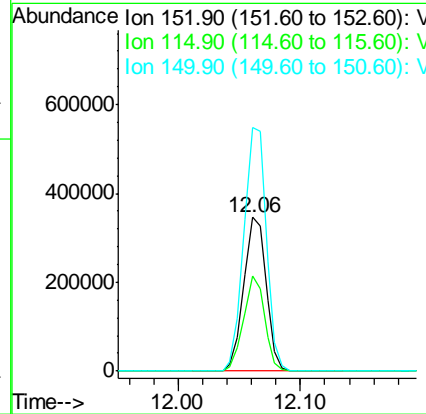
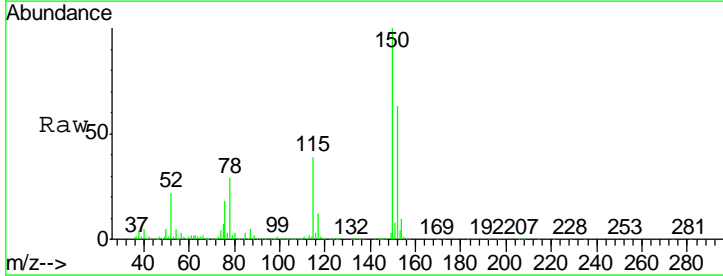
Instrument :
 MSVOA_X
 ClientSampled :

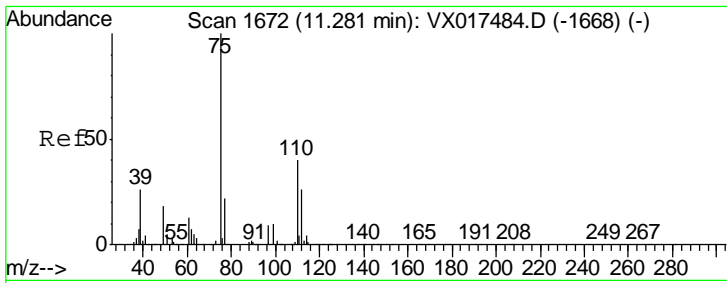
Tgt Ion	Resp	Lower	Upper
117	100		
82	51.6	44.0	66.0
119	31.6	25.4	38.0



#72
 1,4-Dichlorobenzene-d4
 Concen: 50.000 ug/l
 RT: 12.06 min Scan# 1800
 Delta R.T. -0.00 min
 Lab File: VX017671.D
 Acq: 29 Jul 2020 15:19

Tgt Ion	Resp	Lower	Upper
152	100		
115	58.4	65.5	196.6#
150	159.6	0.0	412.6

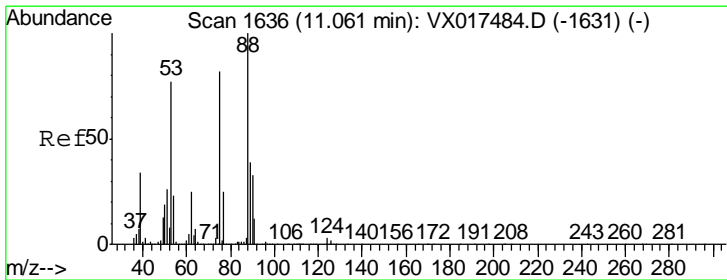
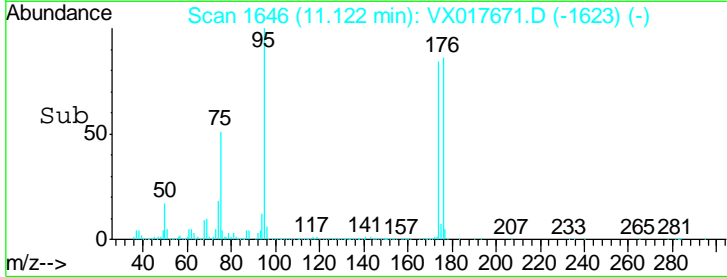
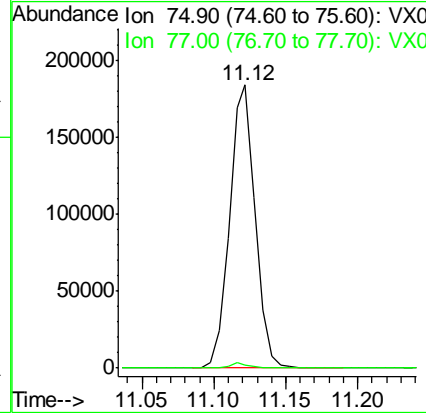
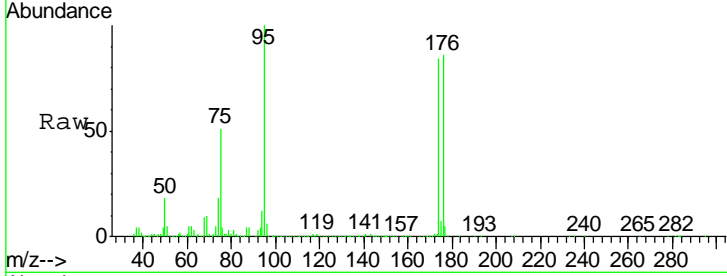




#76
 1,2,3-Trichloropropane
 Concen: 25.466 ug/l
 RT: 11.12 min Scan# 1646
 Delta R.T. -0.16 min
 Lab File: VX017671.D
 Acq: 29 Jul 2020 15:19

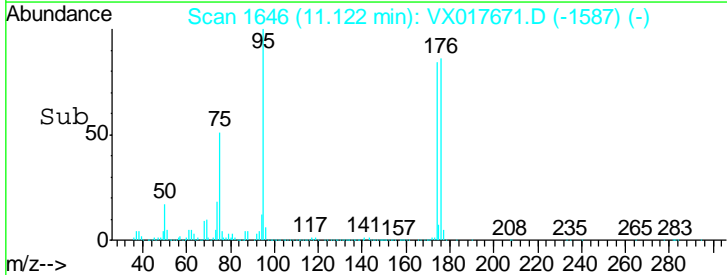
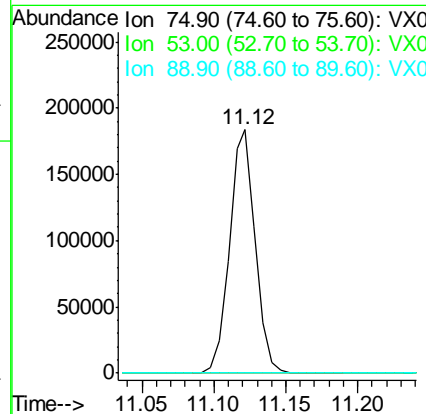
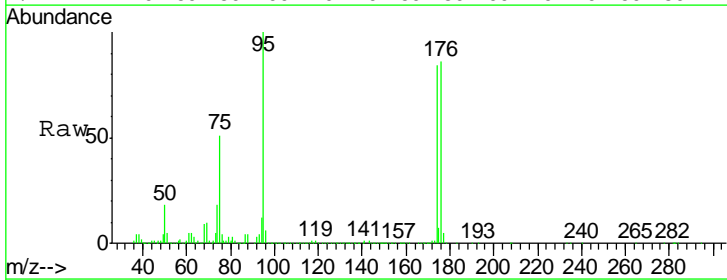
Instrument :
 MSVOA_X
 ClientSampled :

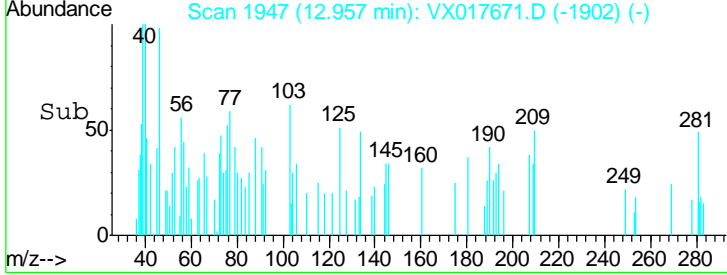
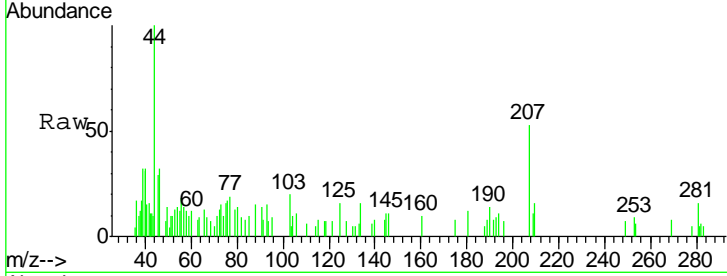
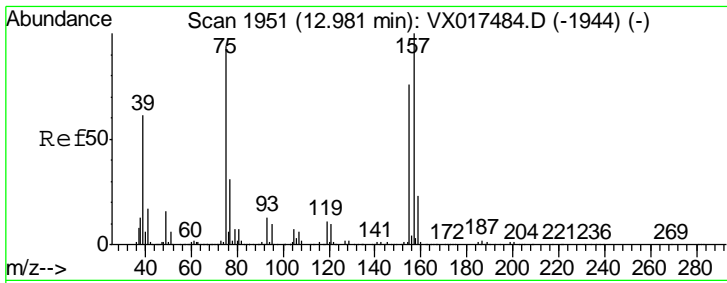
Tgt Ion: 75 Resp: 228621
 Ion Ratio Lower Upper
 75 100
 77 1.7 21.8 65.3#



#81
 trans-1,4-Dichloro-2-butene
 Concen: 64.169 ug/l
 RT: 11.12 min Scan# 1646
 Delta R.T. 0.06 min
 Lab File: VX017671.D
 Acq: 29 Jul 2020 15:19

Tgt Ion: 75 Resp: 228621
 Ion Ratio Lower Upper
 75 100
 53 0.2 75.9 113.9#
 89 0.1 37.8 56.6#





#92
 1,2-Dibromo-3-Chloropropane
 Concen: 2.807 ug/l
 RT: 12.96 min Scan# 1947
 Delta R.T. -0.02 min
 Lab File: VX017671.D
 Acq: 29 Jul 2020 15:19

Instrument :
 MSVOA_X
 ClientSampleId :

Tot Ion	75	Resp	642
Ion Ratio	Lower	Upper	
75	100		
155	5.6	42.3	126.8#
157	21.8	54.3	162.9#

