

Data Path : Z:\voasrv\HPCHEM1\MSVOA_X\Data\VX072924\
 Data File : VX042700.D
 Acq On : 29 Jul 2024 18:56
 Operator : JC/MD
 Sample : P3328-16ME 20X
 Misc : 7.48g/5mL/100uL/5.00mL/MSVOA_X/MEOH
 ALS Vial : 26 Sample Multiplier: 1

Instrument :
 MSVOA_X
ClientSampleId :

Quant Time: Jul 30 01:12:09 2024
 Quant Method : Z:\voasrv\HPCHEM1\MSVOA_X\Method\SFAMXMLM072624WMA.M
 Quant Title : VOC Analysis
 QLast Update : Tue Jul 30 00:49:01 2024
 Response via : Initial Calibration

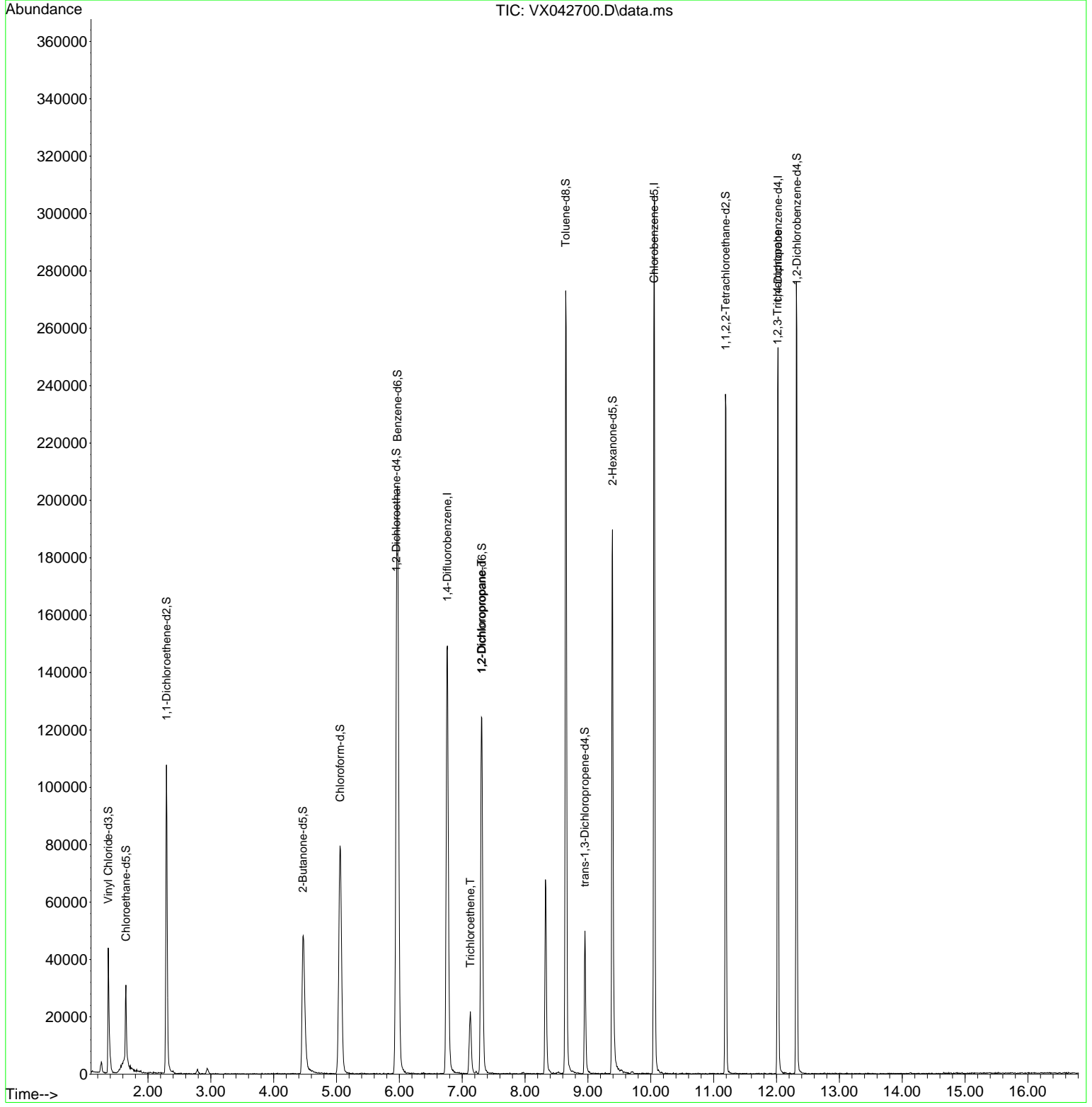
Compound	R.T.	QI on	Response	Conc	Units	Dev(Min)
Internal Standards						
1) 1,4-Difluorobenzene	6.763	114	153839	50.000	ug/L	0.00
28) Chlorobenzene-d5	10.055	117	135441	50.000	ug/L	0.00
58) 1,4-Dichlorobenzene-d4	12.024	152	50547	50.000	ug/L	0.00
System Monitoring Compounds						
4) Vinyl Chloride-d3	1.367	65	35750	38.251	ug/L	0.00
Spike Amount	50.000	Range	60 - 135	Recovery	=	76.500%
7) Chloroethane-d5	1.648	69	17108	44.421	ug/L	0.00
Spike Amount	50.000	Range	70 - 130	Recovery	=	88.840%
11) 1,1-Dichloroethene-d2	2.294	65	19283	41.874	ug/L	0.00
Spike Amount	50.000	Range	60 - 125	Recovery	=	83.740%
21) 2-Butanone-d5	4.464	46	84293	121.686	ug/L	0.00
Spike Amount	100.000	Range	40 - 130	Recovery	=	121.690%
24) Chloroform-d	5.056	84	104370	51.019	ug/L	0.00
Spike Amount	50.000	Range	70 - 125	Recovery	=	102.040%
26) 1,2-Dichloroethane-d4	5.952	65	74101	56.146	ug/L	0.00
Spike Amount	50.000	Range	70 - 125	Recovery	=	112.300%
32) Benzene-d6	5.970	84	197137	52.445	ug/L	0.00
Spike Amount	50.000	Range	70 - 125	Recovery	=	104.880%
36) 1,2-Dichloropropane-d6	7.311	67	64201	57.709	ug/L	0.00
Spike Amount	50.000	Range	70 - 120	Recovery	=	115.420%
41) Toluene-d8	8.647	98	163995	48.659	ug/L	0.00
Spike Amount	50.000	Range	80 - 120	Recovery	=	97.320%
43) trans-1,3-Dichloropropene	8.951	79	23994	46.088	ug/L	0.00
Spike Amount	50.000	Range	60 - 125	Recovery	=	92.180%
47) 2-Hexanone-d5	9.390	63	58807	118.229	ug/L	0.00
Spike Amount	100.000	Range	45 - 130	Recovery	=	118.230%
56) 1,1,2,2-Tetrachloroethene	11.189	84	91903	57.375	ug/L	0.00
Spike Amount	50.000	Range	65 - 120	Recovery	=	114.740%
66) 1,2-Dichlorobenzene-d4	12.323	152	54806	57.372	ug/L	0.00
Spike Amount	50.000	Range	80 - 120	Recovery	=	114.740%
Target Compounds						
34) Trichloroethene	7.129	95	7728	6.979	ug/L	94
37) 1,2-Dichloropropane	7.305	63	7774	7.217	ug/L #	86
61) 1,2,3-Trichloropropane	12.018	75	6822	5.834	ug/L #	64

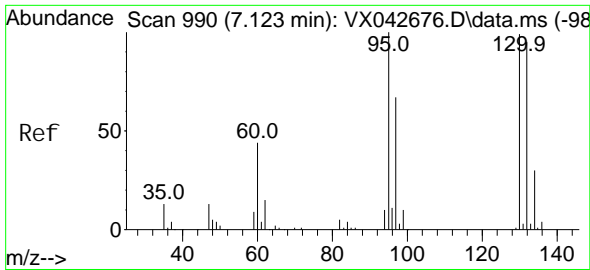
(#) = qualifier out of range (m) = manual integration (+) = signals summed

Data Path : Z:\voasrv\HPCHEM1\MSVOA_X\Data\VX072924\
 Data File : VX042700.D
 Acq On : 29 Jul 2024 18:56
 Operator : JC/MD
 Sample : P3328-16ME 20X
 Misc : 7.48g/5mL/100uL/5.00mL/MSVOA_X/MEOH
 ALS Vial : 26 Sample Multiplier: 1

Instrument :
 MSVOA_X
ClientSampleId :

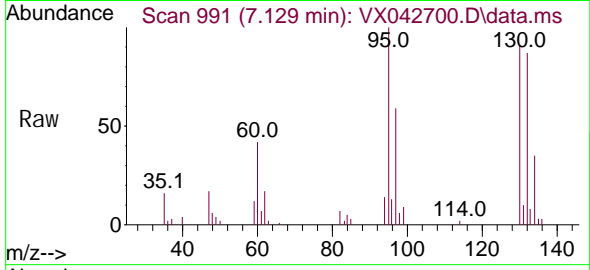
Quant Time: Jul 30 01:12:09 2024
 Quant Method : Z:\voasrv\HPCHEM1\MSVOA_X\Method\SFAMXLM072624WMA.M
 Quant Title : VOC Analysis
 QLast Update : Tue Jul 30 00:49:01 2024
 Response via : Initial Calibration





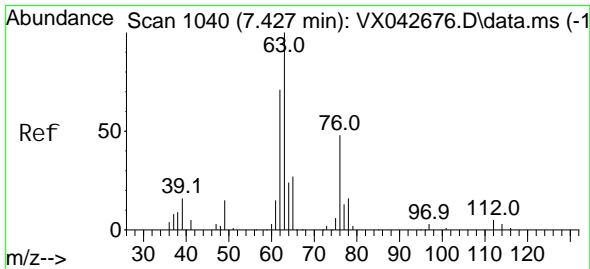
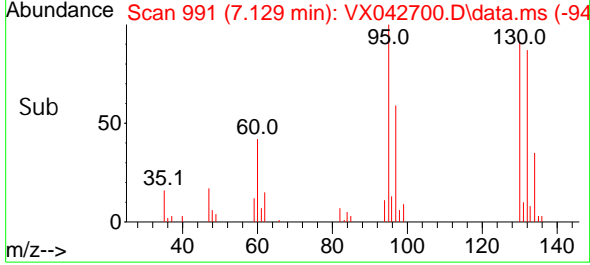
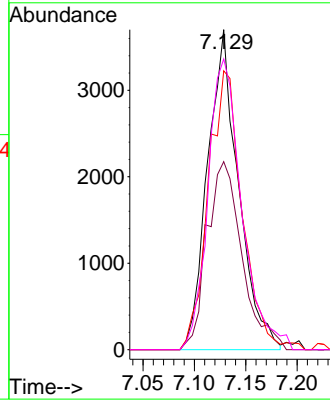
#34
 Trichloroethene
 Concen: 6.979 ug/L
 RT: 7.129 min Scan# 990
 Delta R.T. 0.006 min
 Lab File: VX042700.D
 Acq: 29 Jul 2024 18:56

Instrument : MSVOA_X
 ClientSampleId :



Tgt Ion: 95 Resp: 7728

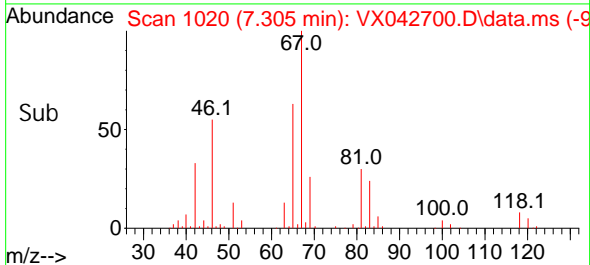
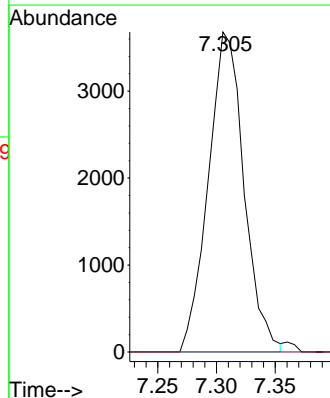
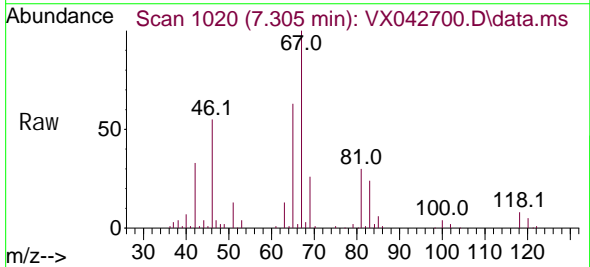
Ion	Ratio	Lower	Upper
95	100		
97	58.7	46.3	86.1
132	87.1	64.3	119.5
130	90.9	67.0	124.4

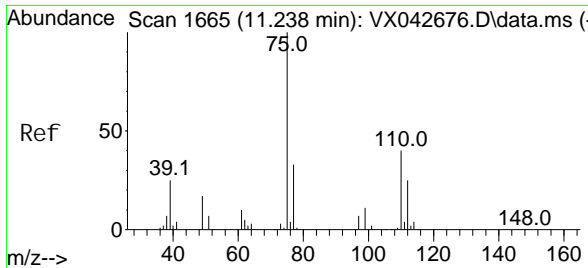


#37
 1,2-Dichloropropane
 Concen: 7.217 ug/L
 RT: 7.305 min Scan# 1020
 Delta R.T. -0.122 min
 Lab File: VX042700.D
 Acq: 29 Jul 2024 18:56

Tgt Ion: 63 Resp: 7774

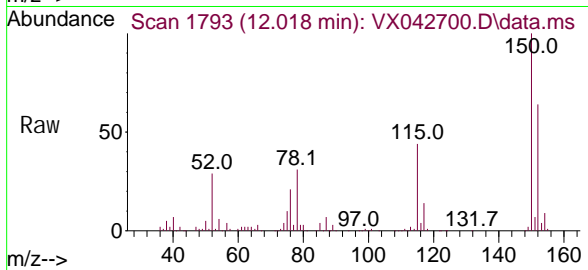
Ion	Ratio	Lower	Upper
63	100		
112	0.0	3.7	5.5#





#61
 1, 2, 3-Tri chl oropropane
 Concen: 5.834 ug/L
 RT: 12.018 min Scan# 1
 Del ta R.T. 0.780 min
 Lab File: VX042700.D
 Acq: 29 Jul 2024 18:56

Instrument :
 MSVOA_X
 ClientSampleId :



Tgt Ion: 75 Resp: 6822

Ion	Ratio	Lower	Upper
75	100		
77	34.8	26.2	39.4
110	2.1	33.0	49.4#

