

Data Path : Z:\voasrv\HPCHEM1\MSVOA_X\Data\VX072924\
 Data File : VX042726.D
 Acq On : 30 Jul 2024 04:59
 Operator : JC/MD
 Sample : VSTDCCC050EC
 Misc : 5.0mL/MSVOA_X/WATER
 ALS Vial : 52 Sample Multiplier: 1

Instrument :
 MSVOA_X
ClientSampleId :

Quant Time: Jul 30 05:34:22 2024
 Quant Method : Z:\voasrv\HPCHEM1\MSVOA_X\Method\SFAMXML072624WMA.M
 Quant Title : VOC Analysis
 QLast Update : Tue Jul 30 02:11:54 2024
 Response via : Initial Calibration

Compound	R.T.	QI on	Response	Conc	Units	Dev(Min)
Internal Standards						
1) 1,4-Difluorobenzene	6.757	114	165231	50.000	ug/L	0.00
28) Chlorobenzene-d5	10.055	117	151684	50.000	ug/L	0.00
58) 1,4-Dichlorobenzene-d4	12.024	152	67859	50.000	ug/L	0.00
System Monitoring Compounds						
4) Vinyl chloride-d3	1.368	65	30573	30.456	ug/L	0.00
Spike Amount	50.000	Range	60 - 135	Recovery	=	60.920%
7) Chloroethane-d5	1.648	69	16953	40.984	ug/L	0.00
Spike Amount	50.000	Range	70 - 130	Recovery	=	81.960%
11) 1,1-Dichloroethene-d2	2.300	65	16994	34.359	ug/L	0.00
Spike Amount	50.000	Range	60 - 125	Recovery	=	68.720%
21) 2-Butanone-d5	4.465	46	73559	98.869	ug/L	0.00
Spike Amount	100.000	Range	40 - 130	Recovery	=	98.870%
24) Chloroform-d	5.056	84	98189	44.688	ug/L	-0.01
Spike Amount	50.000	Range	70 - 125	Recovery	=	89.380%
26) 1,2-Dichloroethane-d4	5.958	65	62895	44.369	ug/L	0.00
Spike Amount	50.000	Range	70 - 125	Recovery	=	88.740%
32) Benzene-d6	5.970	84	172014	40.861	ug/L	-0.01
Spike Amount	50.000	Range	70 - 125	Recovery	=	81.720%
36) 1,2-Dichloropropane-d6	7.306	67	54053	43.384	ug/L	0.00
Spike Amount	50.000	Range	70 - 120	Recovery	=	86.760%
41) Toluene-d8	8.647	98	155287	41.141	ug/L	0.00
Spike Amount	50.000	Range	80 - 120	Recovery	=	82.280%
43) trans-1,3-Dichloropropene	8.952	79	22927	39.322	ug/L	0.00
Spike Amount	50.000	Range	60 - 125	Recovery	=	78.640%
47) 2-Hexanone-d5	9.384	63	54596	98.009	ug/L	0.00
Spike Amount	100.000	Range	45 - 130	Recovery	=	98.010%
56) 1,1,2,2-Tetrachloroethane	11.189	84	86131	48.013	ug/L	0.00
Spike Amount	50.000	Range	65 - 120	Recovery	=	96.020%
66) 1,2-Dichlorobenzene-d4	12.317	152	58784	45.837	ug/L	0.00
Spike Amount	50.000	Range	80 - 120	Recovery	=	91.680%
Target Compounds						
2) Dichlorodifluoromethane	1.166	85	67047	45.929	ug/L	100
3) Chloromethane	1.295	50	54395	45.060	ug/L	99
5) Vinyl chloride	1.374	62	51765	45.110	ug/L	98
6) Bromomethane	1.599	94	17985	50.093	ug/L	97
8) Chloroethane	1.666	64	22239	52.932	ug/L	99
9) Trichlorofluoromethane	1.874	101	74852	46.084	ug/L	93
10) 1,1,2-Trichloro-1,2-dichloroethane	2.319	101	52620	45.083	ug/L	100
12) 1,1-Dichloroethene	2.313	96	50010	46.818	ug/L	94
13) Acetone	2.392	43	49676	85.417	ug/L	98
14) Carbon disulfide	2.508	76	114513	43.906	ug/L	100
15) Methyl Acetate	2.709	43	57717	44.772	ug/L	100
16) Methylene chloride	2.788	84	56341	45.672	ug/L	95
17) trans-1,2-Dichloroethene	3.087	96	50731	46.279	ug/L	96
18) Methyl tert-butyl Ether	3.117	73	179795	47.320	ug/L	99
19) 1,1-Dichloroethane	3.611	63	97412	46.542	ug/L	95
20) cis-1,2-Dichloroethene	4.483	96	59283	47.347	ug/L	96
22) 2-Butanone	4.562	43	77007	86.941	ug/L	92
23) Bromochloromethane	4.904	128	29202	49.252	ug/L	91
25) Chloroform	5.093	83	107004	47.948	ug/L	98

Data Path : Z:\voasrv\HPCHEM1\MSVOA_X\Data\VX072924\
 Data File : VX042726.D
 Acq On : 30 Jul 2024 04:59
 Operator : JC/MD
 Sample : VSTDCCC050EC
 Misc : 5.0mL/MSVOA_X/WATER
 ALS Vial : 52 Sample Multiplier: 1

Instrument :
 MSVOA_X
 ClientSampleId :

Quant Time: Jul 30 05:34:22 2024
 Quant Method : Z:\voasrv\HPCHEM1\MSVOA_X\Method\SFAMXMLM072624WMA.M
 Quant Title : VOC Analysis
 QLast Update : Tue Jul 30 02:11:54 2024
 Response via : Initial Calibration

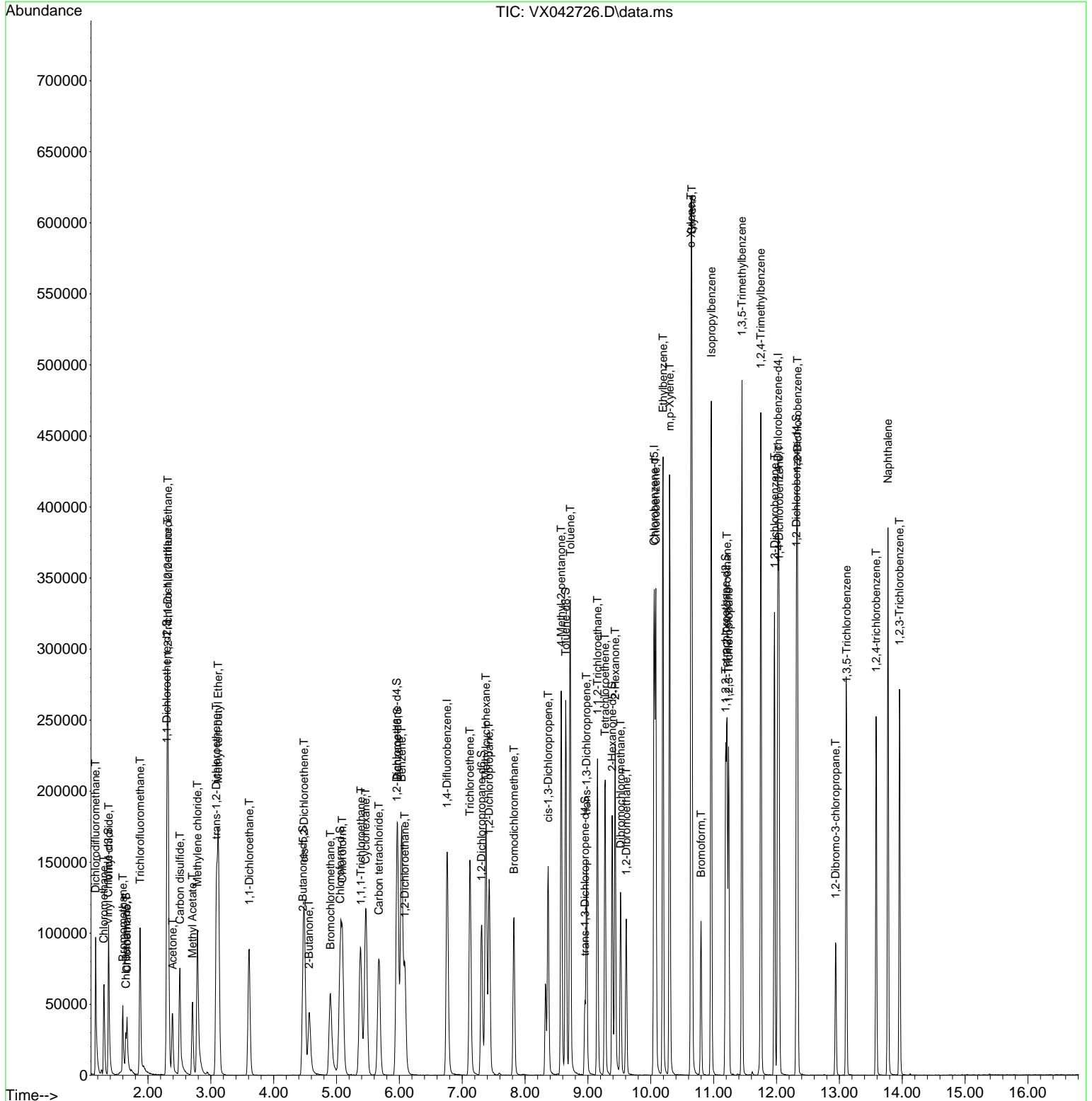
Compound	R. T.	QI on	Response	Conc	Units	Dev(Min)
27) 1,2-Dichloroethane	6.086	62	86632	48.878	ug/L	98
29) Cyclohexane	5.464	56	78857	43.976	ug/L	99
30) 1,1,1-Trichloroethane	5.385	97	92545	47.765	ug/L	99
31) Carbon tetrachloride	5.672	117	77696	47.476	ug/L	100
33) Benzene	6.038	78	215534	46.431	ug/L	100
34) Trichloroethene	7.123	95	60636	48.893	ug/L	98
35) Methylcyclohexane	7.379	83	82064	43.720	ug/L	98
37) 1,2-Dichloropropane	7.428	63	54541	45.209	ug/L #	97
38) Bromodichloromethane	7.824	83	73715	47.275	ug/L	99
39) cis-1,3-Dichloropropene	8.366	75	79888	43.140	ug/L	98
40) 4-Methyl-2-pentanone	8.574	43	152468	91.857	ug/L	97
42) Toluene	8.720	91	229246	47.949	ug/L	98
44) trans-1,3-Dichloropropene	8.976	75	72439	43.154	ug/L	97
45) 1,1,2-Trichloroethane	9.153	97	59292	48.660	ug/L	97
46) Tetrachloroethene	9.275	164	38939	46.039	ug/L	94
48) 2-Hexanone	9.433	43	120534	93.372	ug/L	99
49) Dibromochloromethane	9.519	129	55701	48.955	ug/L	93
50) 1,2-Dibromoethane	9.610	107	61123	48.231	ug/L #	100
51) Chlorobenzene	10.079	112	146127	47.263	ug/L	98
52) Ethylbenzene	10.195	91	251509	47.961	ug/L	98
53) m,p-Xylene	10.299	106	97659	49.435	ug/L	99
54) o-Xylene	10.640	106	96016	48.859	ug/L	99
55) Styrene	10.653	104	163431	49.889	ug/L	98
57) 1,1,2,2-Tetrachloroethane	11.213	83	92276	47.356	ug/L	99
59) Bromoform	10.799	173	36289	47.653	ug/L	99
60) Isopropylbenzene	10.963	105	249129	48.588	ug/L	99
61) 1,2,3-Trichloropropane	11.238	75	72594	46.241	ug/L	99
62) 1,3,5-Triethylbenzene	11.451	105	207232	48.596	ug/L	99
63) 1,2,4-Triethylbenzene	11.750	105	203640	48.363	ug/L	97
64) 1,3-Dichlorobenzene	11.969	146	104509	47.392	ug/L	96
65) 1,4-Dichlorobenzene	12.043	146	104860	47.210	ug/L	100
67) 1,2-Dichlorobenzene	12.335	146	107984	48.629	ug/L	99
68) 1,2-Dibromo-3-chloropropane	12.939	75	18854	45.080	ug/L	95
69) 1,3,5-Triethylbenzene	13.116	180	63101	46.134	ug/L	99
70) 1,2,4-triethylbenzene	13.585	180	54422	45.372	ug/L	100
71) Naphthalene	13.774	128	226150	48.877	ug/L	100
72) 1,2,3-Triethylbenzene	13.957	180	59952	48.252	ug/L	99

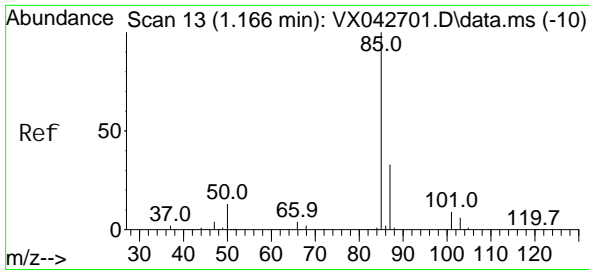
(#) = qualifier out of range (m) = manual integration (+) = signals summed

Data Path : Z:\voasrv\HPCHEM1\MSVOA_X\Data\VX072924\
 Data File : VX042726.D
 Acq On : 30 Jul 2024 04:59
 Operator : JC/MD
 Sample : VSTCCCC050EC
 Misc : 5.0mL/MSVOA_X/WATER
 ALS Vial : 52 Sample Multiplier: 1

Instrument :
 MSVOA_X
ClientSampleId :

Quant Time: Jul 30 05:34:22 2024
 Quant Method : Z:\voasrv\HPCHEM1\MSVOA_X\Method\SFAMXLM072624WMA.M
 Quant Title : VOC Analysis
 QLast Update : Tue Jul 30 02:11:54 2024
 Response via : Initial Calibration

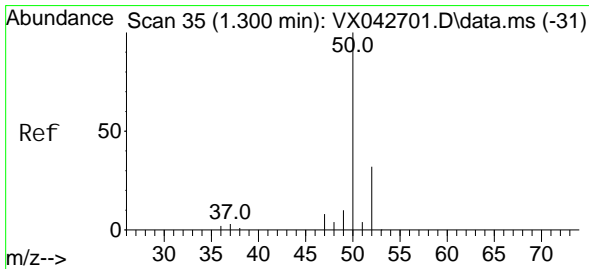
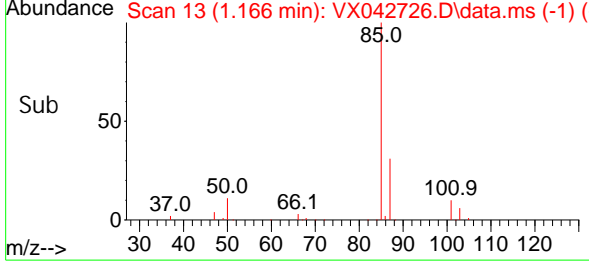
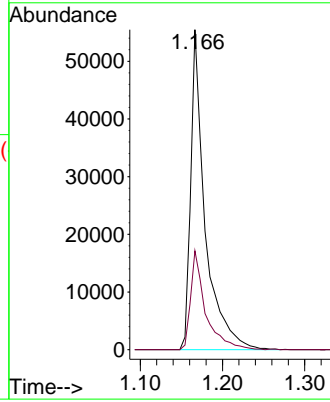
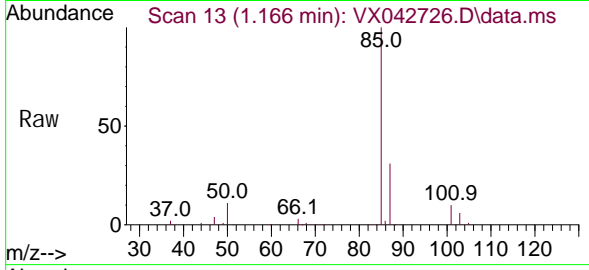




#2
 Di chl orodi fluoromethane
 Concen: 45.929 ug/L
 RT: 1.166 min Scan# 11
 Delta R.T. 0.000 min
 Lab File: VX042726.D
 Acq: 30 Jul 2024 04:59

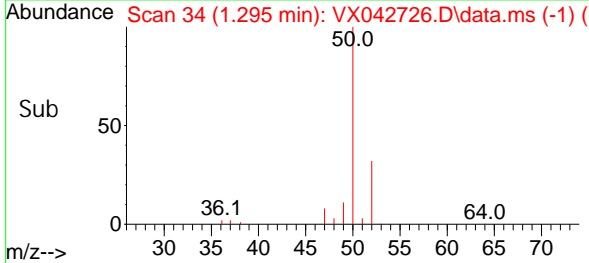
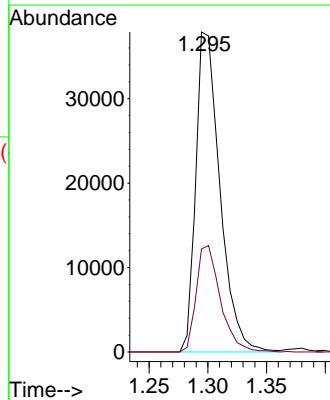
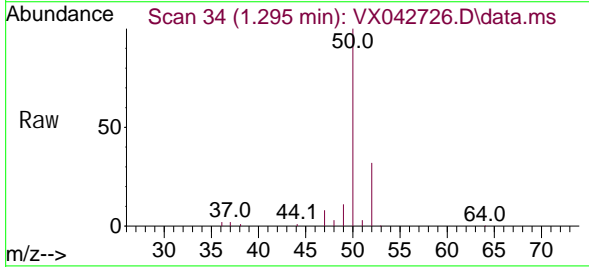
Instrument :
 MSVOA_X
 ClientSampleId :

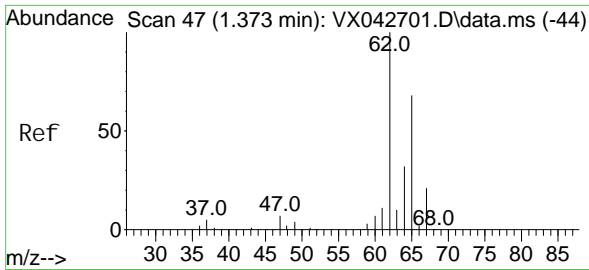
Tgt Ion: 85 Resp: 67047
 Ion Ratio Lower Upper
 85 100
 87 32.3 25.8 38.8



#3
 Chloromethane
 Concen: 45.060 ug/L
 RT: 1.295 min Scan# 34
 Delta R.T. -0.006 min
 Lab File: VX042726.D
 Acq: 30 Jul 2024 04:59

Tgt Ion: 50 Resp: 54395
 Ion Ratio Lower Upper
 50 100
 52 32.2 23.0 42.6





#5

Vinyl chloride

Concen: 45.110 ug/L

RT: 1.374 min Scan# 41

Delta R.T. 0.000 min

Lab File: VX042726.D

Acq: 30 Jul 2024 04:59

Instrument :

MSVOA_X

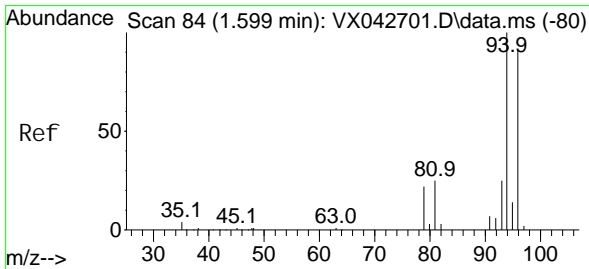
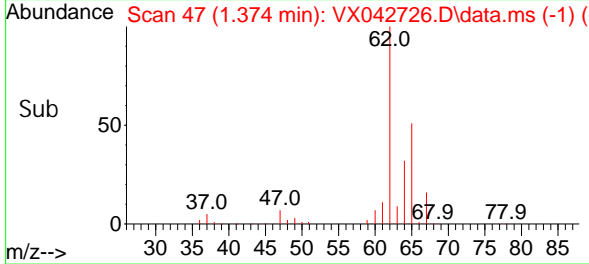
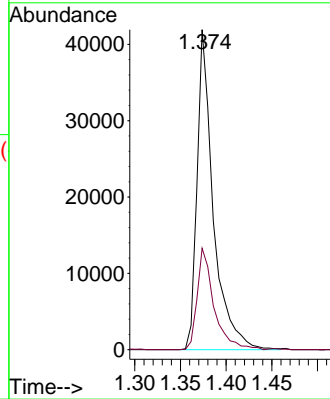
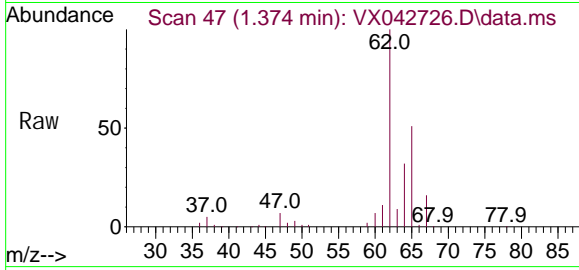
ClientSampleId :

Tgt Ion: 62 Resp: 51765

Ion Ratio Lower Upper

62 100

64 31.7 21.6 40.0



#6

Bromomethane

Concen: 50.093 ug/L

RT: 1.599 min Scan# 84

Delta R.T. 0.000 min

Lab File: VX042726.D

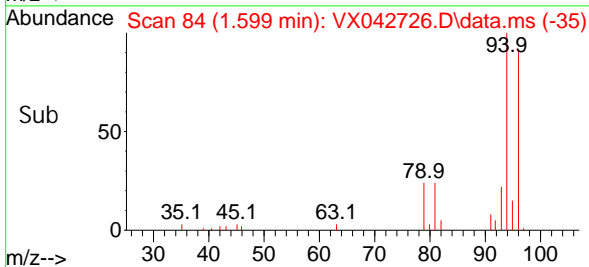
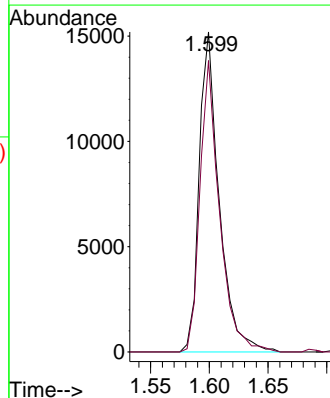
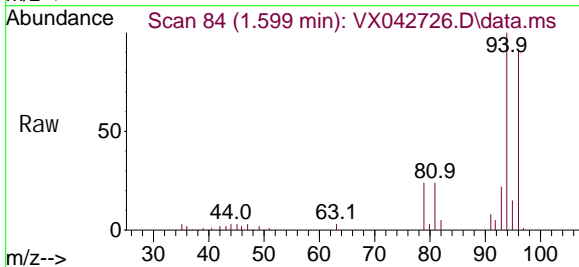
Acq: 30 Jul 2024 04:59

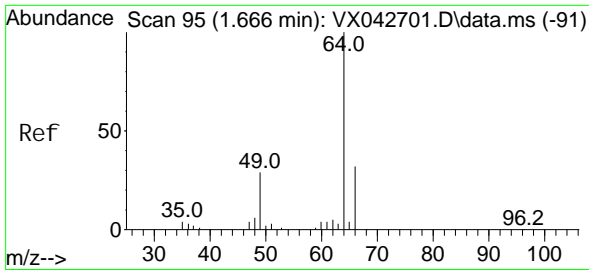
Tgt Ion: 94 Resp: 17985

Ion Ratio Lower Upper

94 100

96 91.1 66.1 122.7

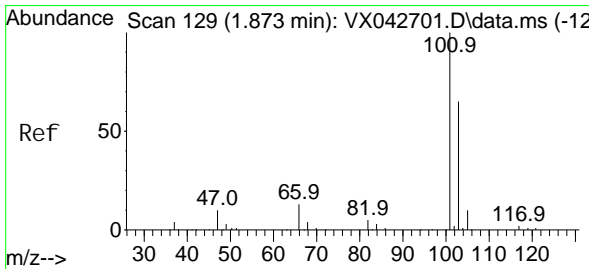
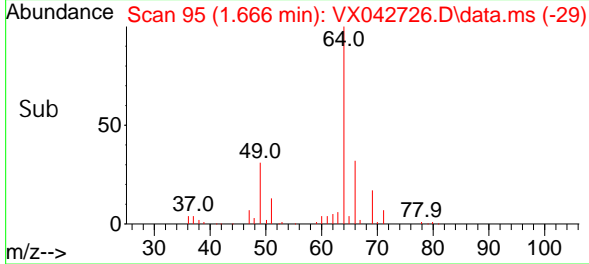
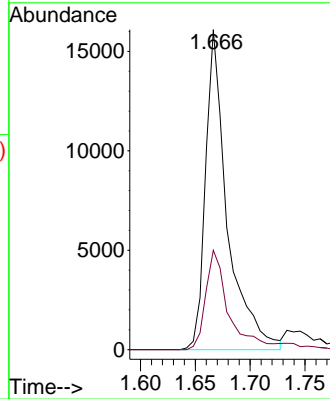
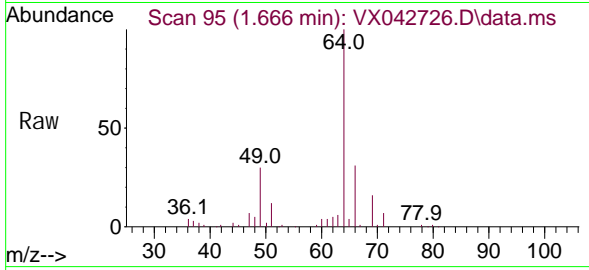




#8
 Chloroethane
 Concen: 52.932 ug/L
 RT: 1.666 min Scan# 91
 Delta R.T. 0.000 min
 Lab File: VX042726.D
 Acq: 30 Jul 2024 04:59

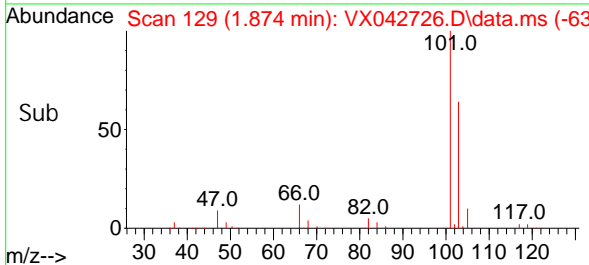
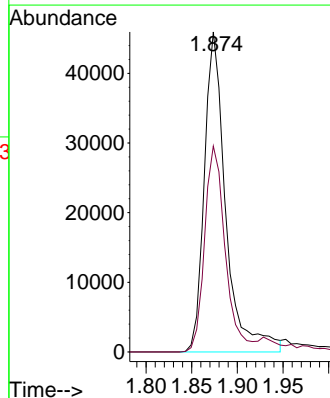
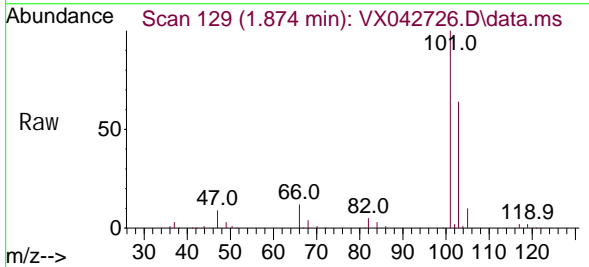
Instrument : MSVOA_X
 ClientSampleId :

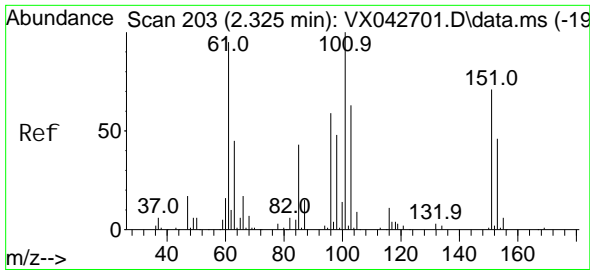
Tgt Ion: 64 Resp: 22239
 Ion Ratio Lower Upper
 64 100
 66 31.1 21.4 39.8



#9
 Trichlorofluoromethane
 Concen: 46.084 ug/L
 RT: 1.874 min Scan# 129
 Delta R.T. 0.000 min
 Lab File: VX042726.D
 Acq: 30 Jul 2024 04:59

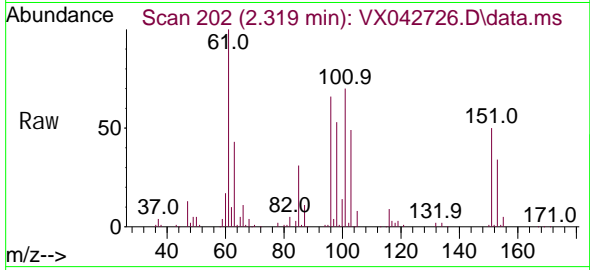
Tgt Ion: 101 Resp: 74852
 Ion Ratio Lower Upper
 101 100
 103 61.7 45.2 67.8



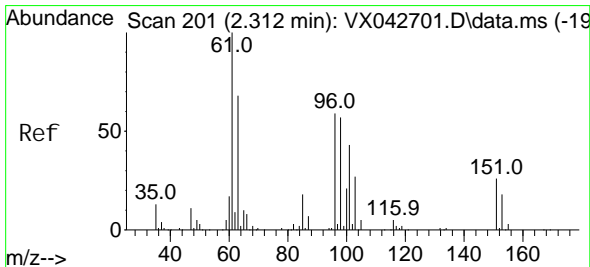
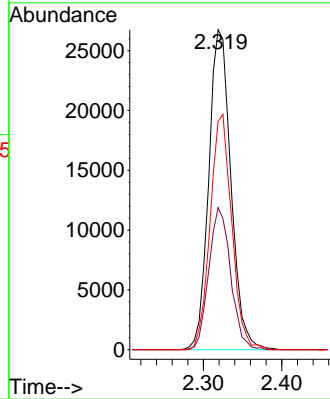
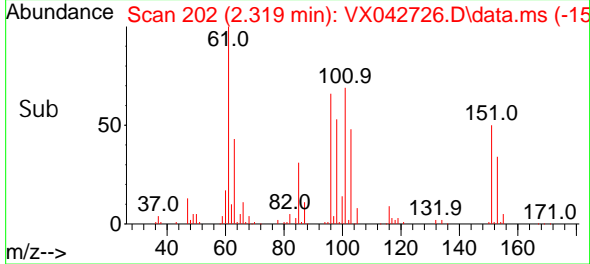


#10
 1,1,2-Tri chloro-1,2,2-tri fluoroethane
 Concen: 45.083 ug/L
 RT: 2.319 min Scan# 202
 Delta R.T. -0.006 min
 Lab File: VX042726.D
 Acq: 30 Jul 2024 04:59

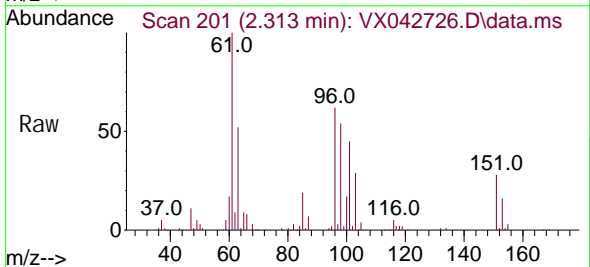
Instrument : MSVOA_X
 ClientSampleId :



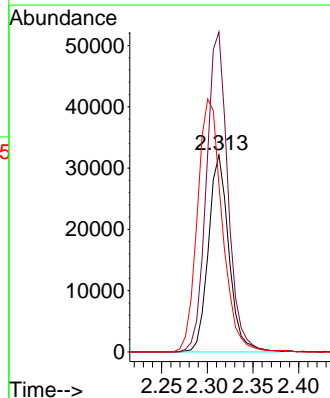
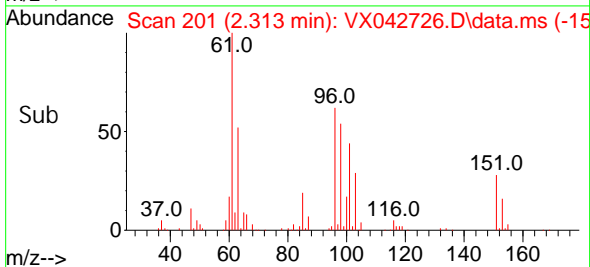
Tgt Ion: 101 Resp: 52620
 Ion Ratio Lower Upper
 101 100
 85 43.6 34.4 51.6
 151 71.0 56.6 85.0

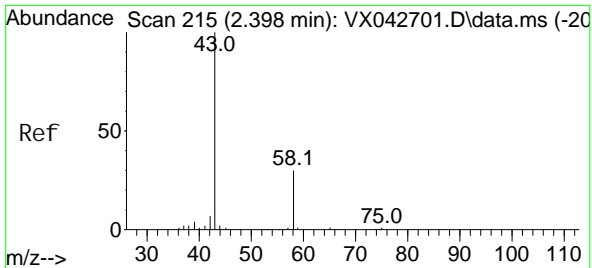


#12
 1,1-Di chloroethene
 Concen: 46.818 ug/L
 RT: 2.313 min Scan# 201
 Delta R.T. 0.000 min
 Lab File: VX042726.D
 Acq: 30 Jul 2024 04:59



Tgt Ion: 96 Resp: 50010
 Ion Ratio Lower Upper
 96 100
 61 162.5 113.0 209.9
 63 85.1 70.5 130.9

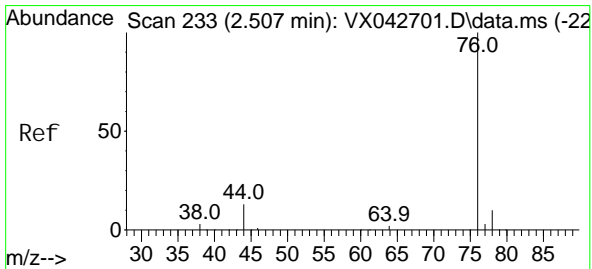
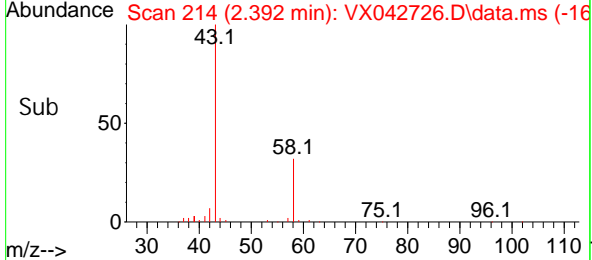
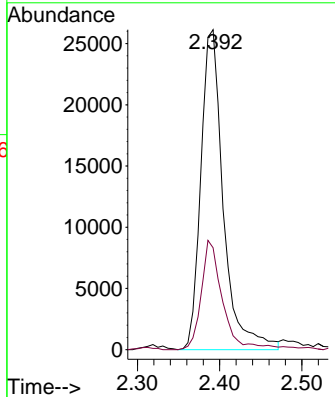
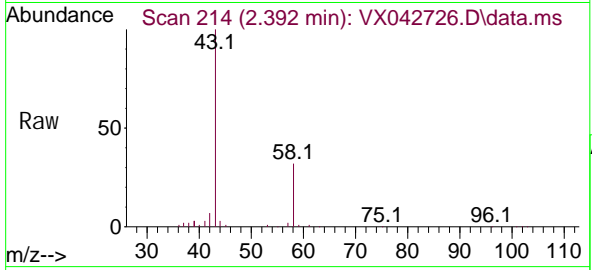




#13
 Acetone
 Concen: 85.417 ug/L
 RT: 2.392 min Scan# 214
 Delta R.T. -0.006 min
 Lab File: VX042726.D
 Acq: 30 Jul 2024 04:59

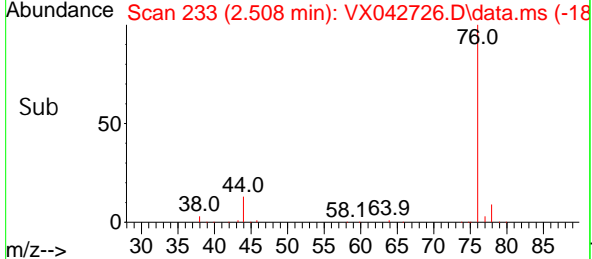
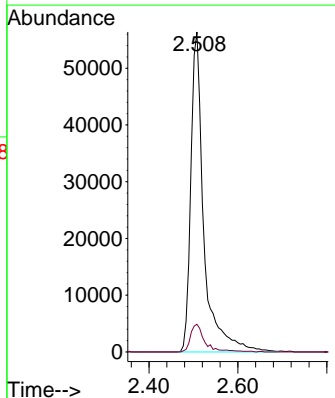
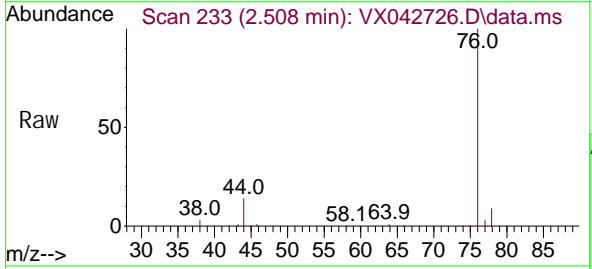
Instrument : MSVOA_X
 ClientSampleId :

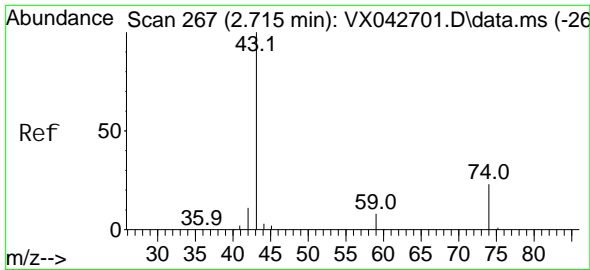
Tgt Ion: 43 Resp: 49676
 Ion Ratio Lower Upper
 43 100
 58 30.3 0.0 62.4



#14
 Carbon di sul fi de
 Concen: 43.906 ug/L
 RT: 2.508 min Scan# 233
 Delta R.T. 0.000 min
 Lab File: VX042726.D
 Acq: 30 Jul 2024 04:59

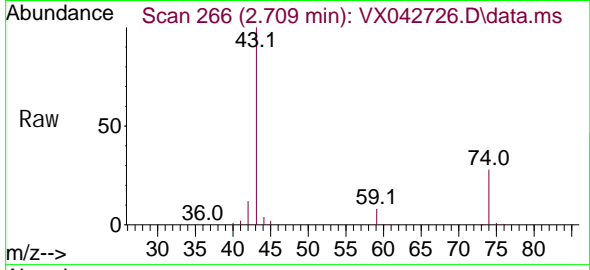
Tgt Ion: 76 Resp: 114513
 Ion Ratio Lower Upper
 76 100
 78 8.7 7.0 10.6



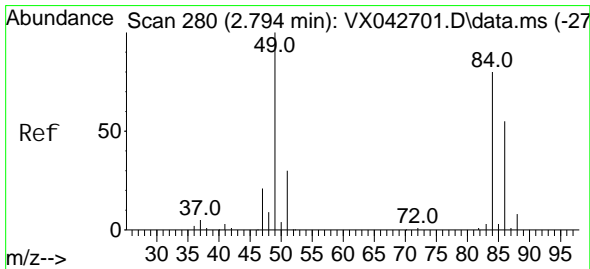
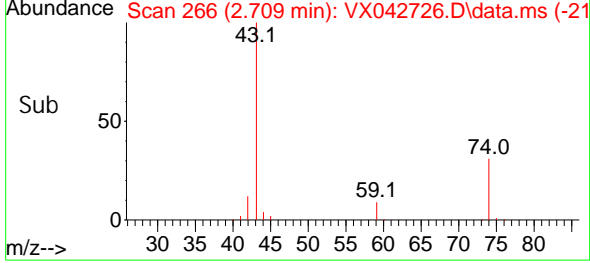
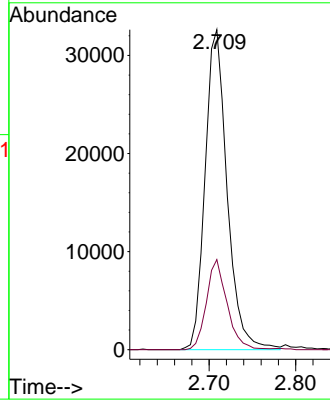


#15
Methyl Acetate
Concen: 44.772 ug/L
RT: 2.709 min Scan# 20
Delta R.T. -0.006 min
Lab File: VX042726.D
Acq: 30 Jul 2024 04:59

Instrument :
MSVOA_X
ClientSampleId :

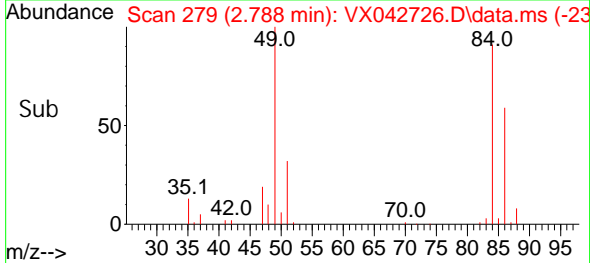
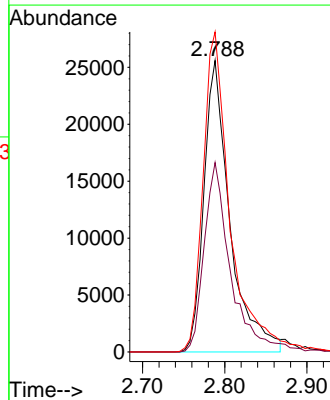
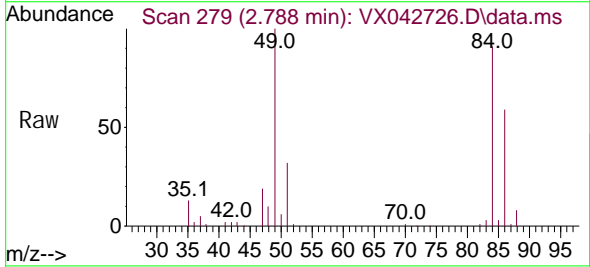


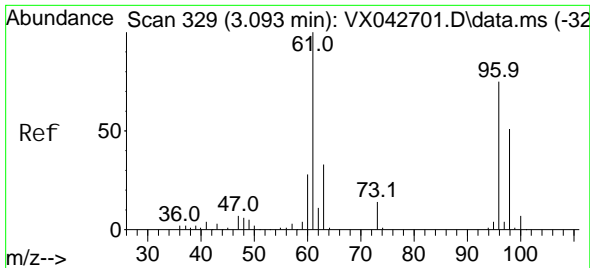
Tgt Ion: 43 Resp: 57717
Ion Ratio Lower Upper
43 100
74 26.4 21.0 31.4



#16
Methylene chloride
Concen: 45.672 ug/L
RT: 2.788 min Scan# 279
Delta R.T. -0.006 min
Lab File: VX042726.D
Acq: 30 Jul 2024 04:59

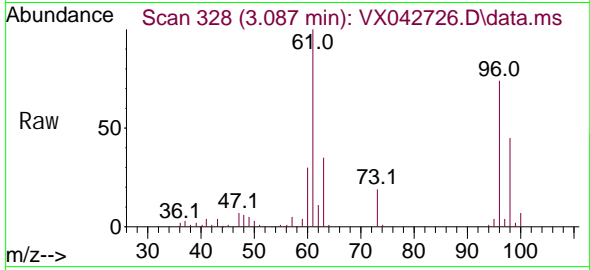
Tgt Ion: 84 Resp: 56341
Ion Ratio Lower Upper
84 100
86 65.0 43.5 80.7
49 109.8 81.1 150.7





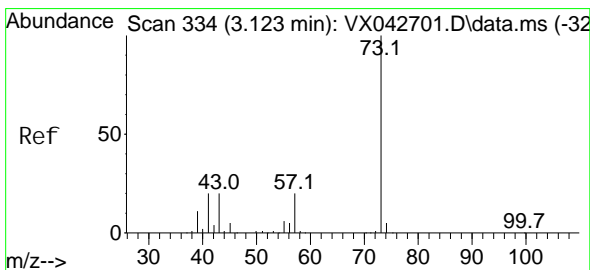
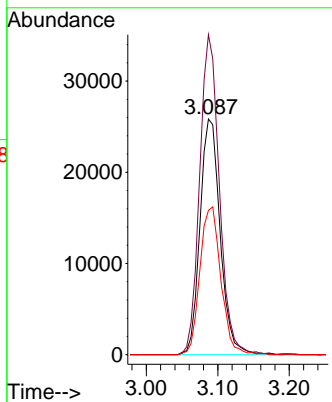
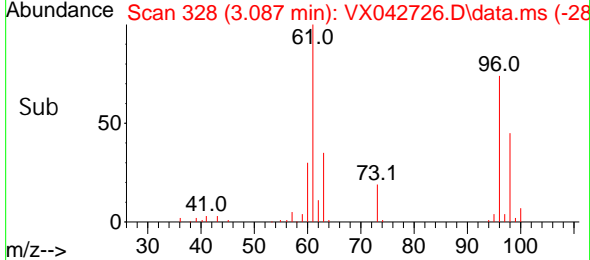
#17
 trans-1, 2-Dichloroethene
 Concen: 46.279 ug/L
 RT: 3.087 min Scan# 311
 Delta R.T. -0.006 min
 Lab File: VX042726.D
 Acq: 30 Jul 2024 04:59

Instrument : MSVOA_X
 ClientSampleId :

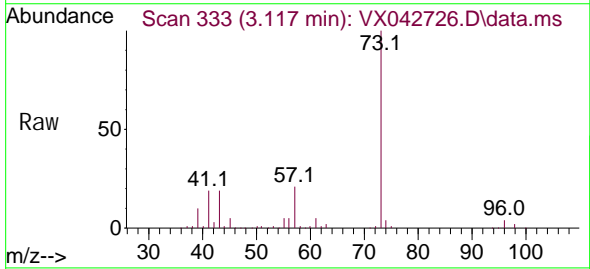


Tgt Ion: 96 Resp: 50731

Ion	Ratio	Lower	Upper
96	100		
61	135.7	99.3	184.3
98	61.2	43.8	81.3

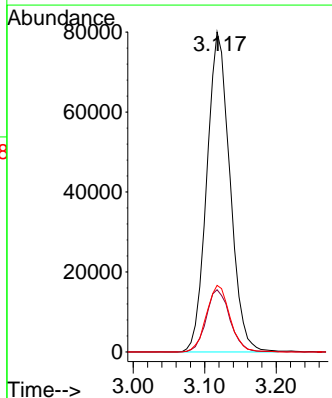
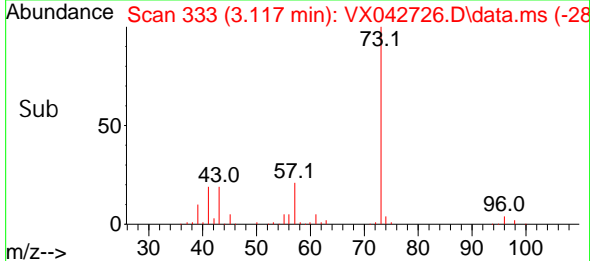


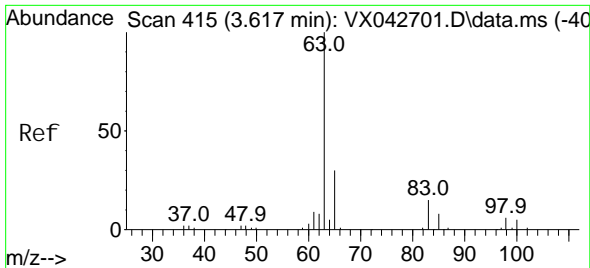
#18
 Methyl tert-butyl Ether
 Concen: 47.320 ug/L
 RT: 3.117 min Scan# 333
 Delta R.T. -0.006 min
 Lab File: VX042726.D
 Acq: 30 Jul 2024 04:59



Tgt Ion: 73 Resp: 179795

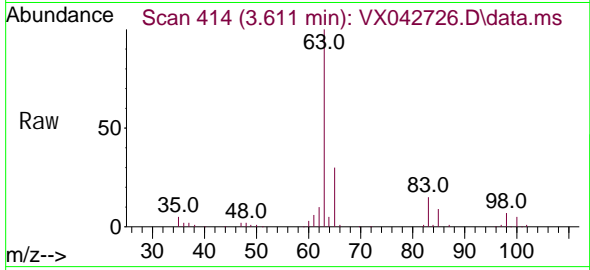
Ion	Ratio	Lower	Upper
73	100		
43	20.0	15.4	23.2
57	21.2	16.9	25.3



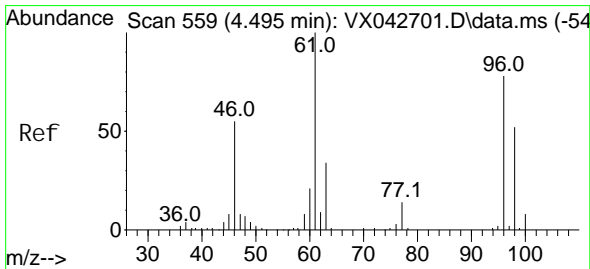
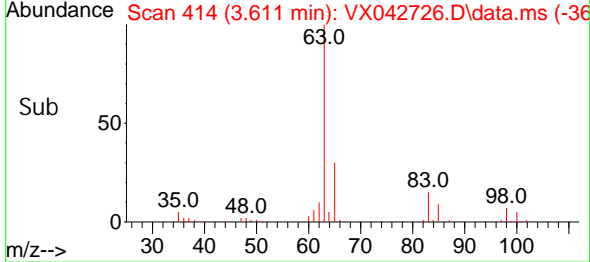
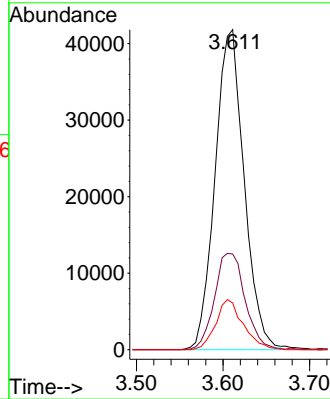


#19
 1,1-Dichloroethane
 Concen: 46.542 ug/L
 RT: 3.611 min Scan# 414
 Delta R.T. -0.006 min
 Lab File: VX042726.D
 Acq: 30 Jul 2024 04:59

Instrument : MSVOA_X
 ClientSampleId :

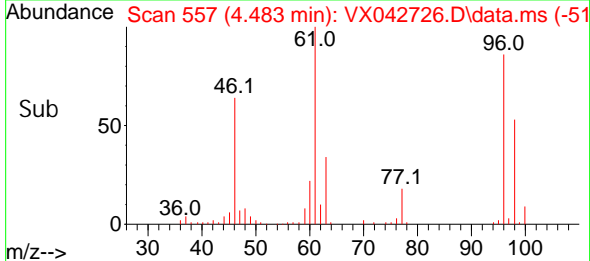
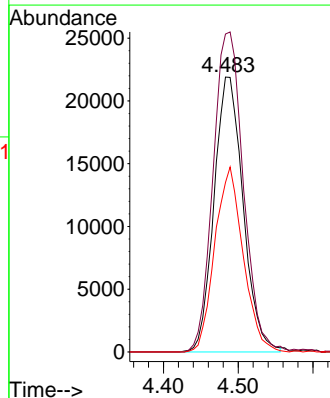
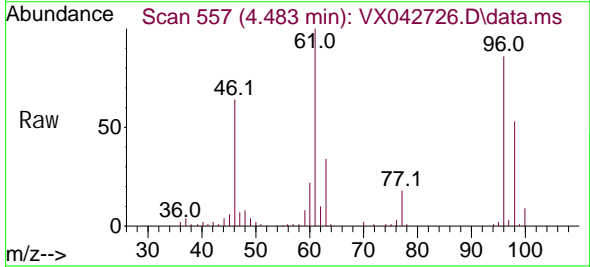


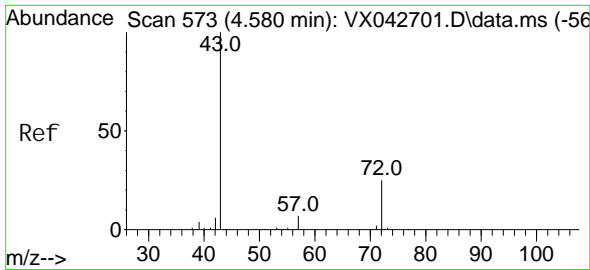
Tgt Ion: 63 Resp: 97412
 Ion Ratio Lower Upper
 63 100
 65 29.9 23.6 43.8
 83 14.6 10.9 20.3



#20
 cis-1,2-Dichloroethene
 Concen: 47.347 ug/L
 RT: 4.483 min Scan# 557
 Delta R.T. -0.012 min
 Lab File: VX042726.D
 Acq: 30 Jul 2024 04:59

Tgt Ion: 96 Resp: 59283
 Ion Ratio Lower Upper
 96 100
 61 115.6 85.3 158.3
 98 61.6 42.7 79.3

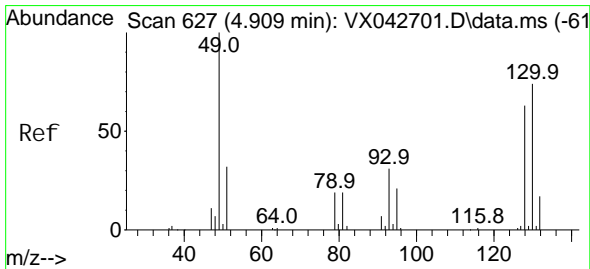
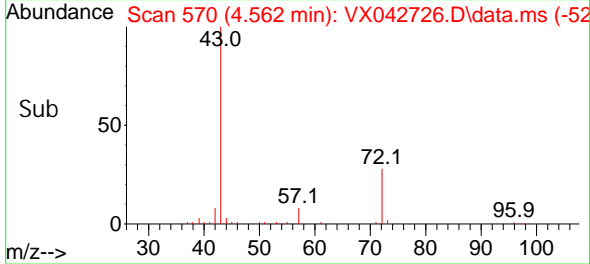
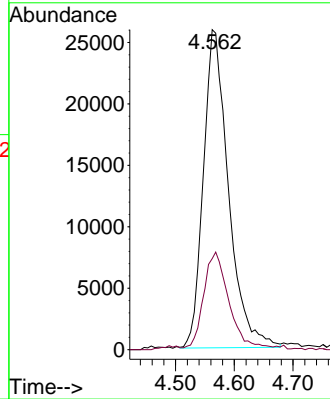
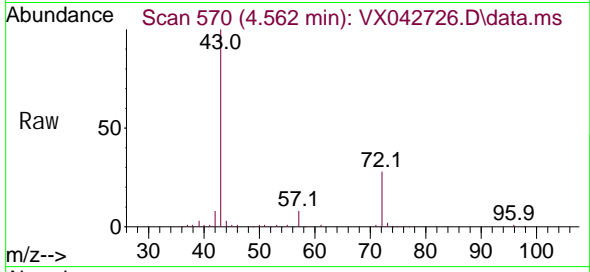




#22
 2-Butanone
 Concen: 86.941 ug/L
 RT: 4.562 min Scan# 51
 Delta R.T. -0.018 min
 Lab File: VX042726.D
 Acq: 30 Jul 2024 04:59

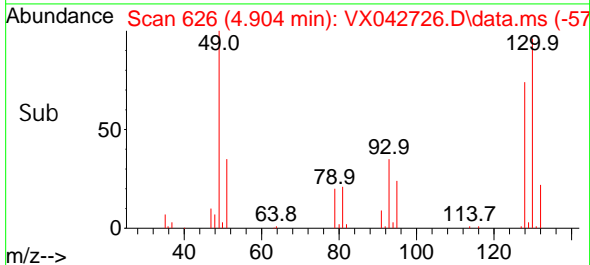
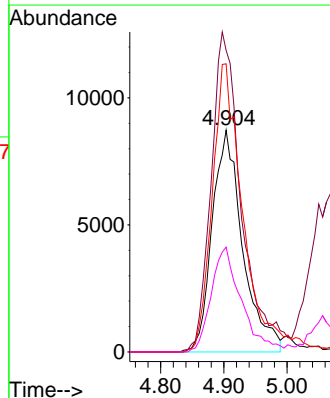
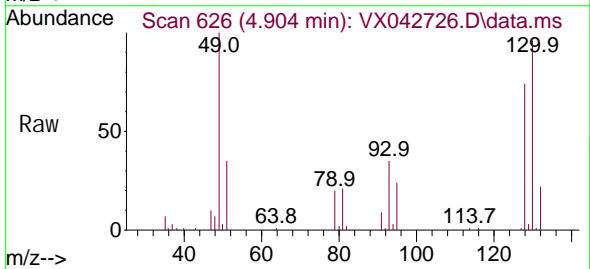
Instrument :
 MSVOA_X
 ClientSampleId :

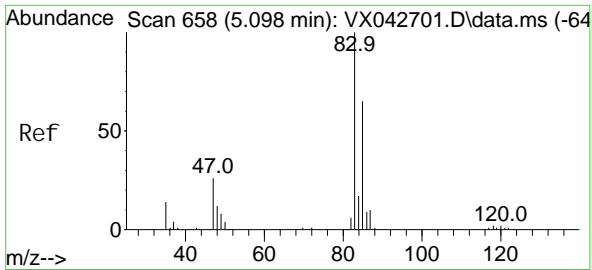
Tgt Ion: 43 Resp: 77007
 Ion Ratio Lower Upper
 43 100
 72 31.1 13.4 40.2



#23
 Bromochloromethane
 Concen: 49.252 ug/L
 RT: 4.904 min Scan# 626
 Delta R.T. -0.006 min
 Lab File: VX042726.D
 Acq: 30 Jul 2024 04:59

Tgt Ion: 128 Resp: 29202
 Ion Ratio Lower Upper
 128 100
 49 136.0 107.0 198.6
 130 129.9 85.5 158.9
 51 47.2 38.6 57.8

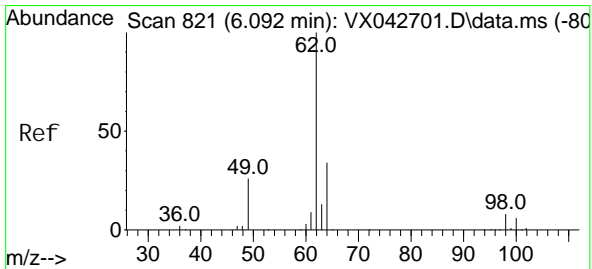
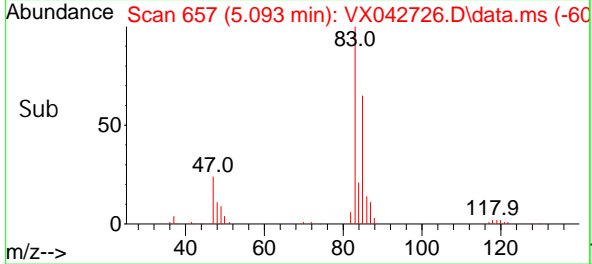
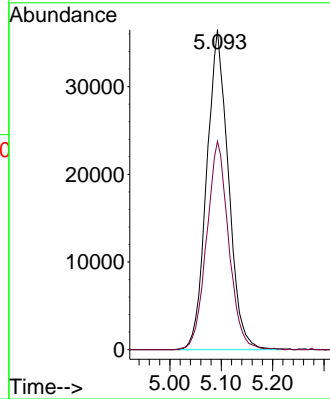
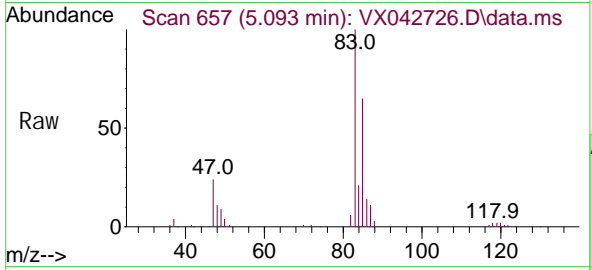




#25
 Chloroform
 Concen: 47.948 ug/L
 RT: 5.093 min Scan# 60
 Delta R.T. -0.006 min
 Lab File: VX042726.D
 Acq: 30 Jul 2024 04:59

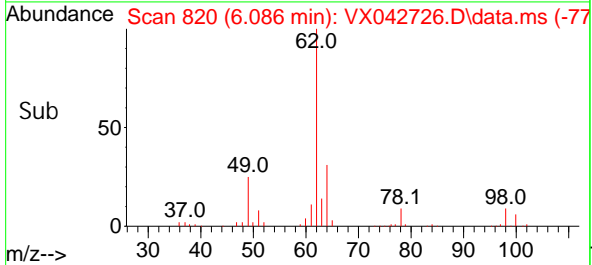
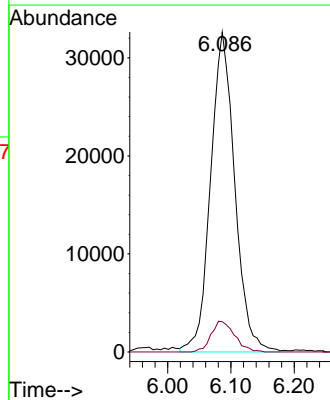
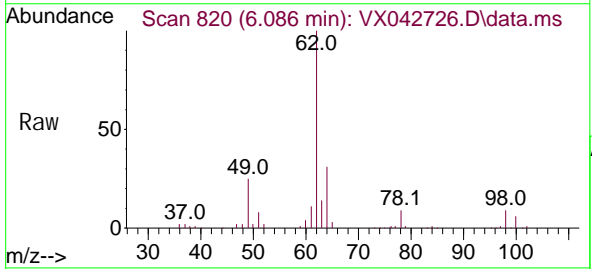
Instrument :
 MSVOA_X
 ClientSampleId :

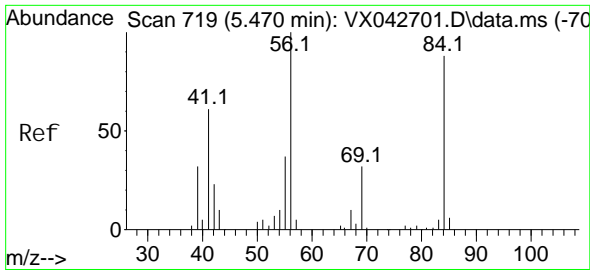
Tgt Ion: 83 Resp: 107004
 Ion Ratio Lower Upper
 83 100
 85 65.1 44.3 82.3



#27
 1,2-Dichloroethane
 Concen: 48.878 ug/L
 RT: 6.086 min Scan# 820
 Delta R.T. -0.006 min
 Lab File: VX042726.D
 Acq: 30 Jul 2024 04:59

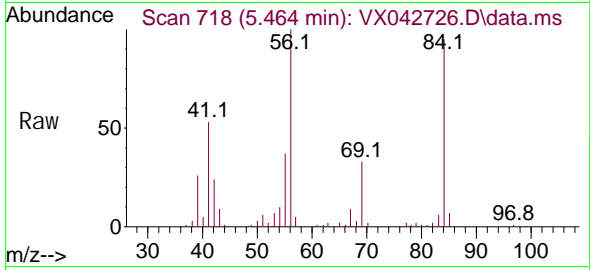
Tgt Ion: 62 Resp: 86632
 Ion Ratio Lower Upper
 62 100
 98 9.4 7.1 10.7



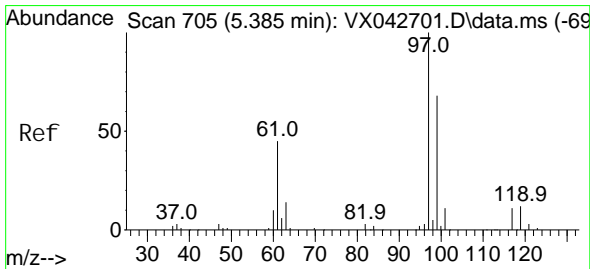
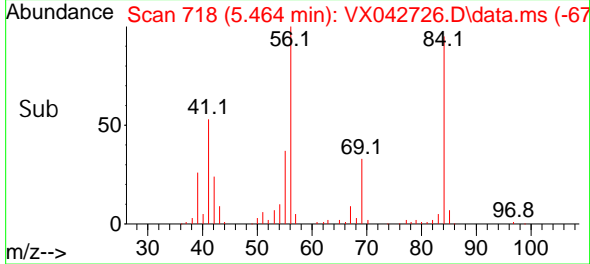
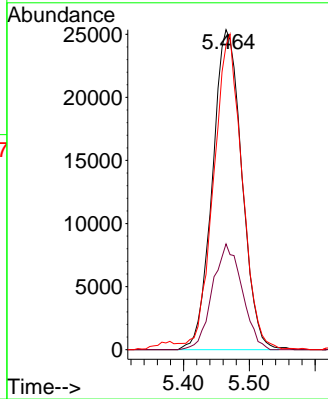


#29
 Cycl hexane
 Concen: 43.976 ug/L
 RT: 5.464 min Scan# 719
 Delta R.T. -0.006 min
 Lab File: VX042726.D
 Acq: 30 Jul 2024 04:59

Instrument :
 MSVOA_X
 ClientSampleId :

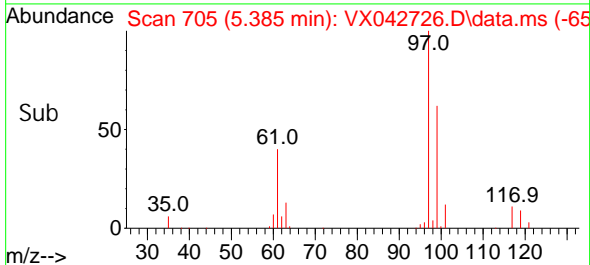
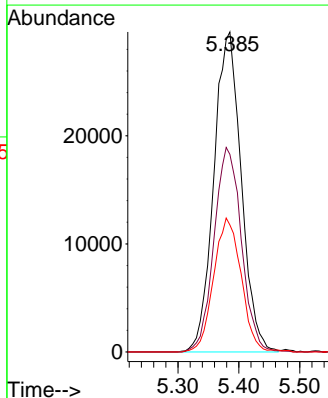
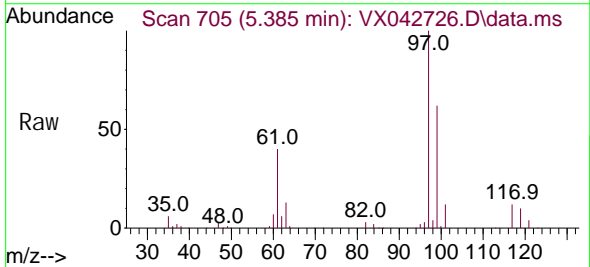


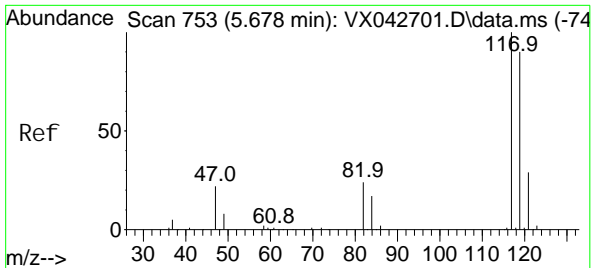
Tgt Ion: 56 Resp: 78857
 Ion Ratio Lower Upper
 56 100
 69 33.3 26.1 39.1
 84 95.5 75.5 113.3



#30
 1,1,1-Trichloroethane
 Concen: 47.765 ug/L
 RT: 5.385 min Scan# 705
 Delta R.T. 0.000 min
 Lab File: VX042726.D
 Acq: 30 Jul 2024 04:59

Tgt Ion: 97 Resp: 92545
 Ion Ratio Lower Upper
 97 100
 99 63.9 51.4 77.0
 61 41.7 34.4 51.6

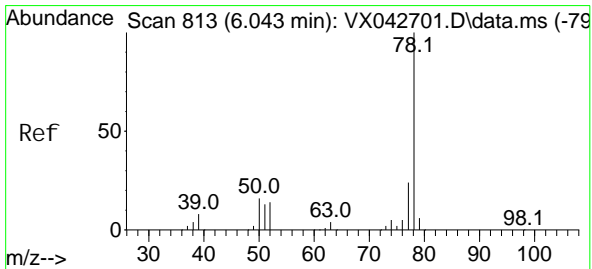
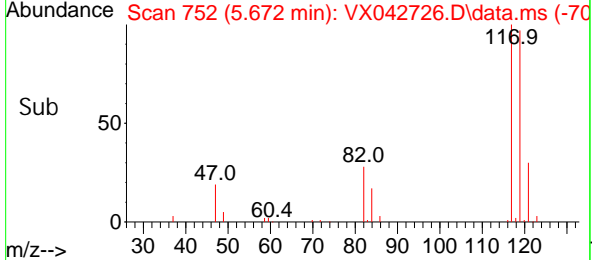
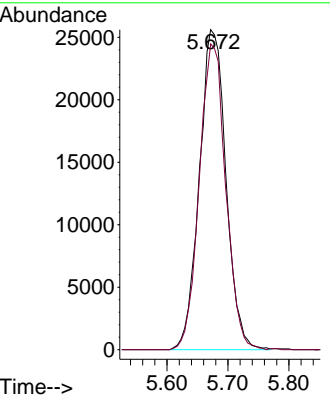
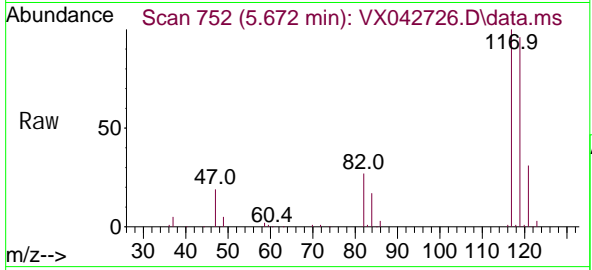




#31
 Carbon tetrachloride
 Concen: 47.476 ug/L
 RT: 5.672 min Scan# 752
 Delta R.T. -0.006 min
 Lab File: VX042726.D
 Acq: 30 Jul 2024 04:59

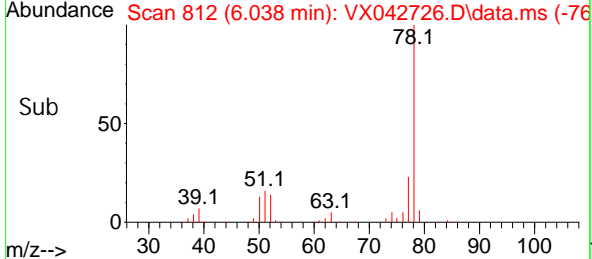
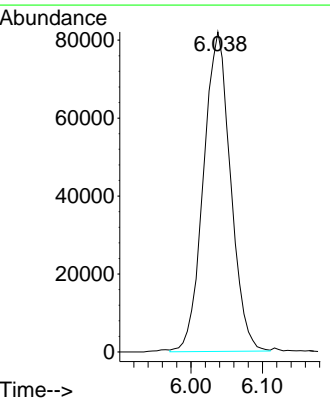
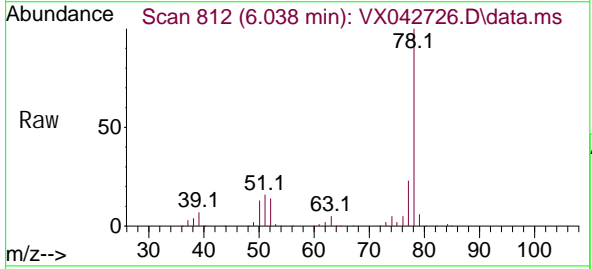
Instrument : MSVOA_X
 ClientSampleId :

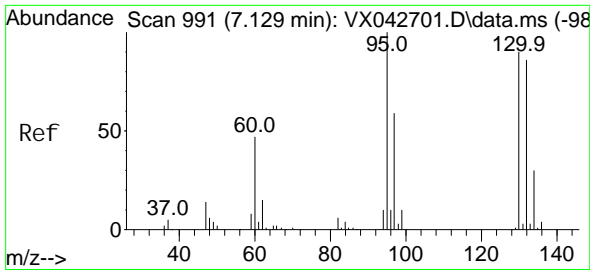
Tgt Ion: 117 Resp: 77696
 Ion Ratio Lower Upper
 117 100
 119 94.8 76.2 114.2



#33
 Benzene
 Concen: 46.431 ug/L
 RT: 6.038 min Scan# 812
 Delta R.T. -0.006 min
 Lab File: VX042726.D
 Acq: 30 Jul 2024 04:59

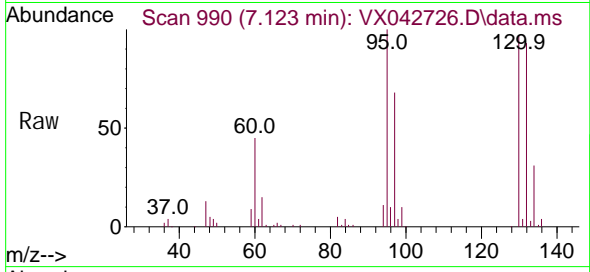
Tgt Ion: 78 Resp: 215534



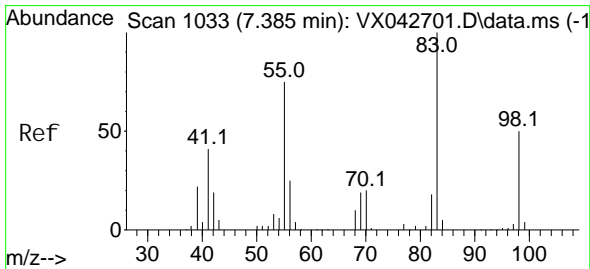
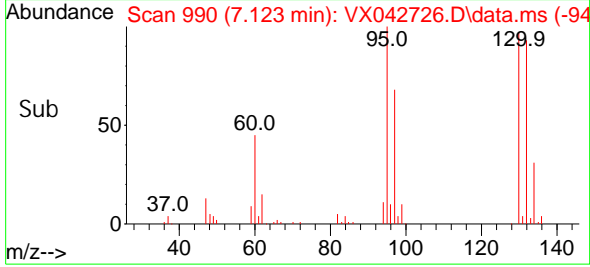
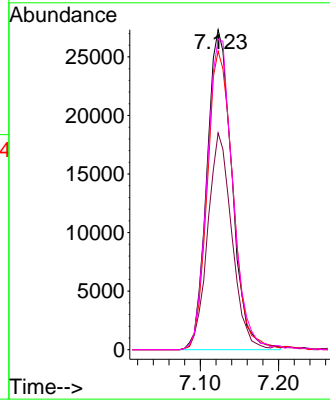


#34
 Trichloroethene
 Concen: 48.893 ug/L
 RT: 7.123 min Scan# 991
 Delta R.T. -0.006 min
 Lab File: VX042726.D
 Acq: 30 Jul 2024 04:59

Instrument :
 MSVOA_X
 ClientSampleId :

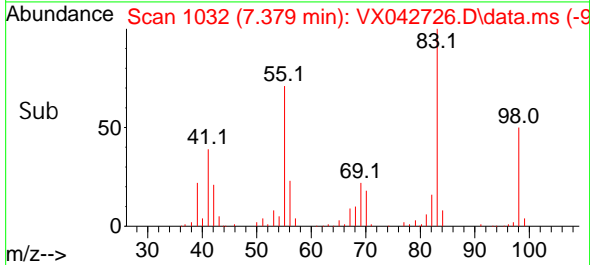
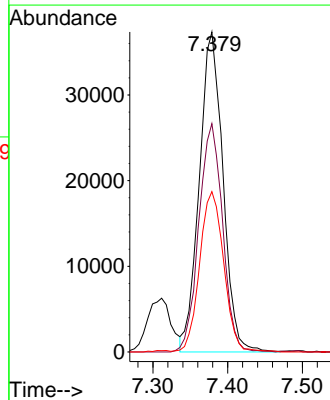
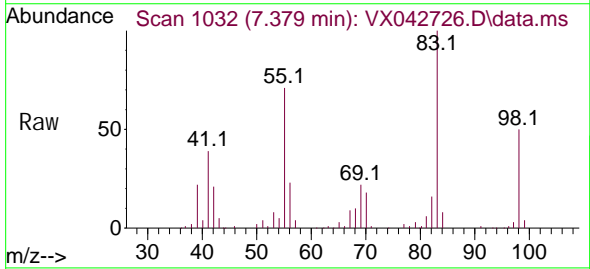


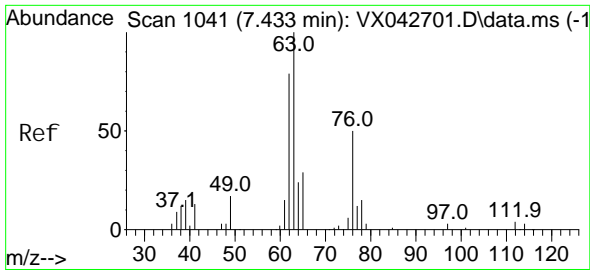
Tgt Ion: 95 Resp: 60636
 Ion Ratio Lower Upper
 95 100
 97 67.8 46.3 86.1
 132 93.3 64.3 119.5
 130 97.1 67.0 124.4



#35
 Methyl cycl ohexane
 Concen: 43.720 ug/L
 RT: 7.379 min Scan# 1032
 Delta R.T. -0.006 min
 Lab File: VX042726.D
 Acq: 30 Jul 2024 04:59

Tgt Ion: 83 Resp: 82064
 Ion Ratio Lower Upper
 83 100
 55 71.6 58.2 87.2
 98 50.1 38.5 57.7

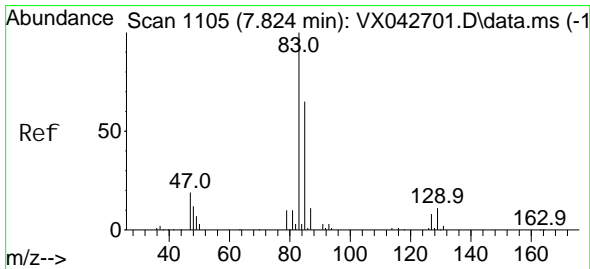
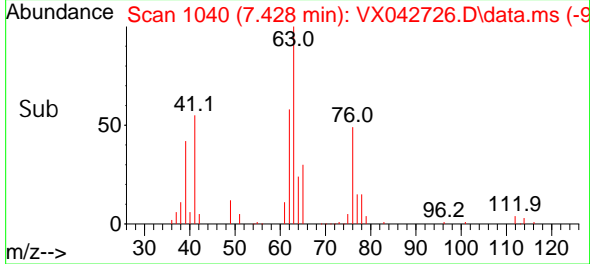
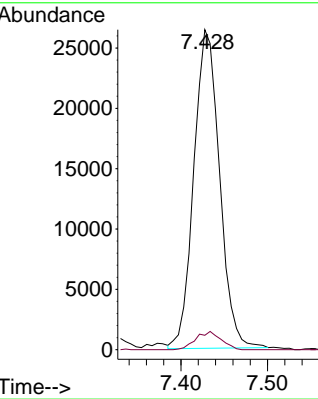
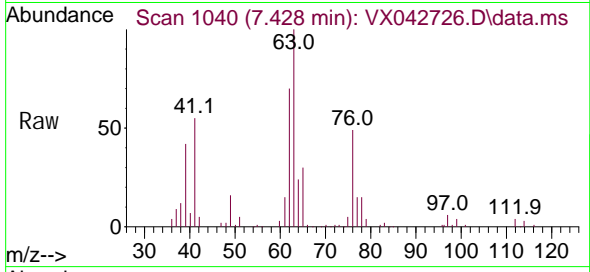




#37
 1, 2-Di chl oropropane
 Concen: 45.209 ug/L
 RT: 7.428 min Scan# 1040
 Delta R.T. -0.006 min
 Lab File: VX042726.D
 Acq: 30 Jul 2024 04:59

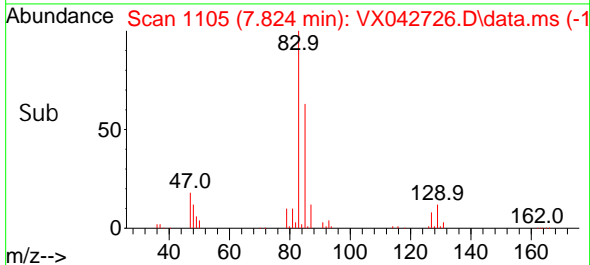
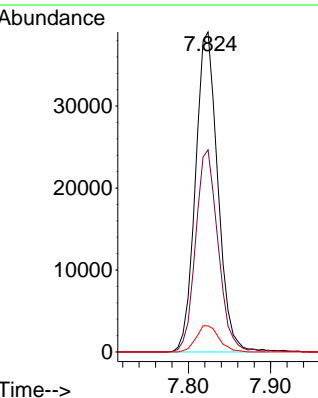
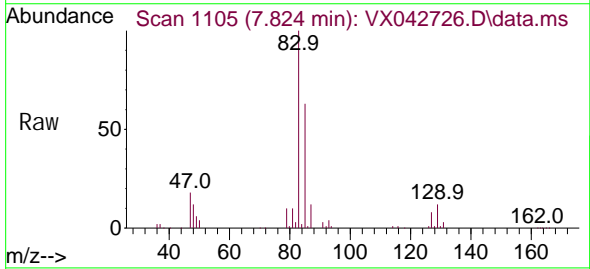
Instrument :
 MSVOA_X
 ClientSampleId :

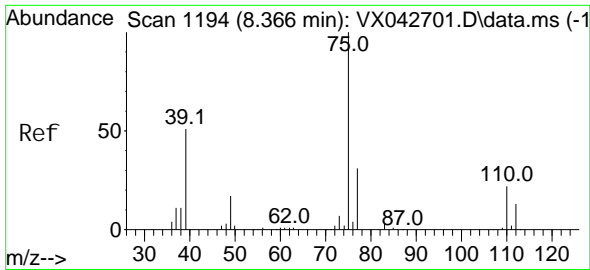
Tgt Ion: 63 Resp: 54541
 Ion Ratio Lower Upper
 63 100
 112 5.6 3.7 5.5#



#38
 Bromodi chl oromethane
 Concen: 47.275 ug/L
 RT: 7.824 min Scan# 1105
 Delta R.T. 0.000 min
 Lab File: VX042726.D
 Acq: 30 Jul 2024 04:59

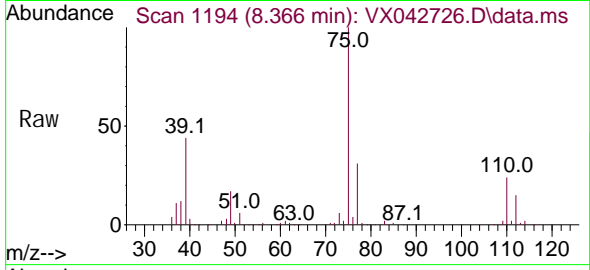
Tgt Ion: 83 Resp: 73715
 Ion Ratio Lower Upper
 83 100
 85 63.2 43.7 81.1
 127 8.1 6.5 9.7



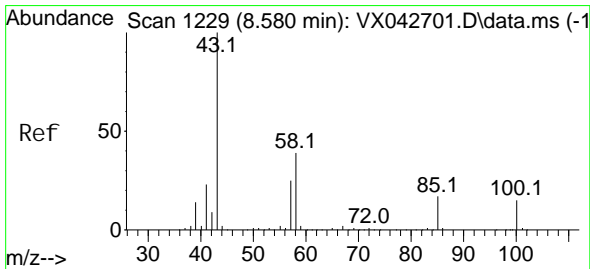
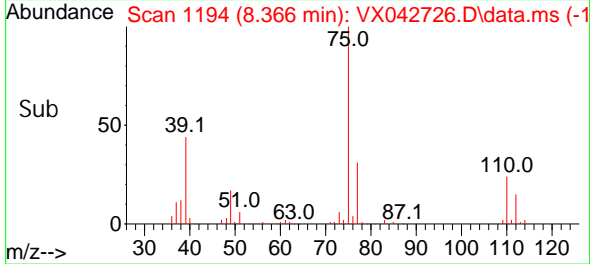
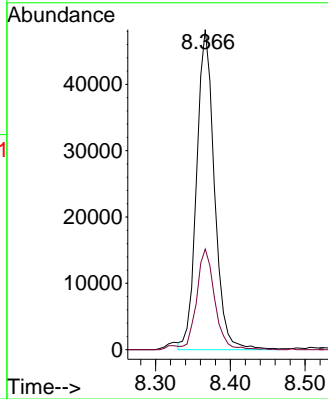


#39
 cis-1,3-Dichloropropene
 Concen: 43.140 ug/L
 RT: 8.366 min Scan# 1194
 Delta R.T. 0.000 min
 Lab File: VX042726.D
 Acq: 30 Jul 2024 04:59

Instrument : MSVOA_X
 ClientSampleId :

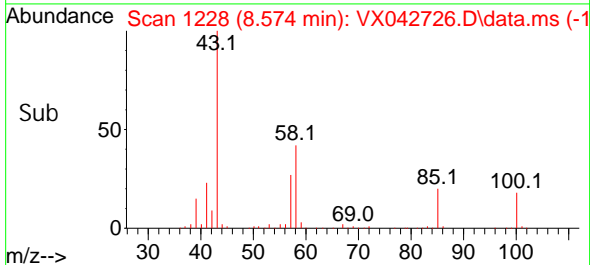
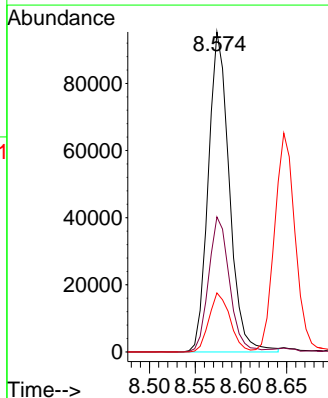
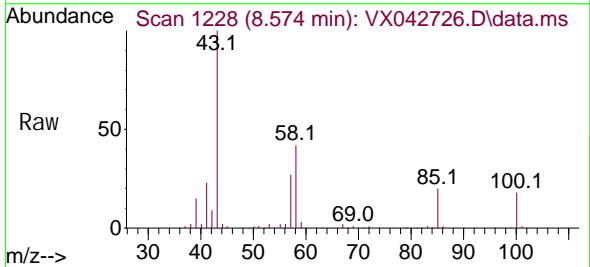


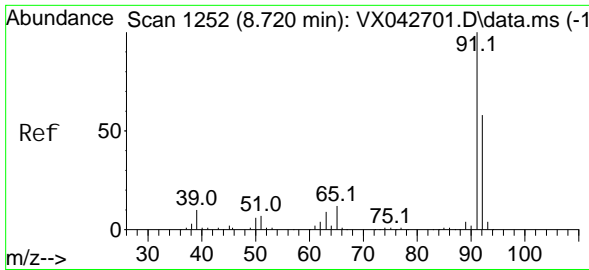
Tgt Ion: 75 Resp: 79888
 Ion Ratio Lower Upper
 75 100
 77 31.5 21.4 39.8



#40
 4-Methyl-2-pentanone
 Concen: 91.857 ug/L
 RT: 8.574 min Scan# 1228
 Delta R.T. -0.006 min
 Lab File: VX042726.D
 Acq: 30 Jul 2024 04:59

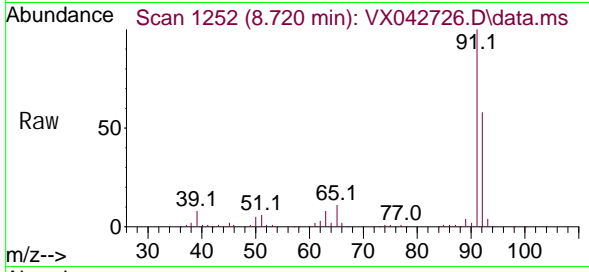
Tgt Ion: 43 Resp: 152468
 Ion Ratio Lower Upper
 43 100
 58 41.8 32.4 48.6
 100 18.5 13.4 20.0



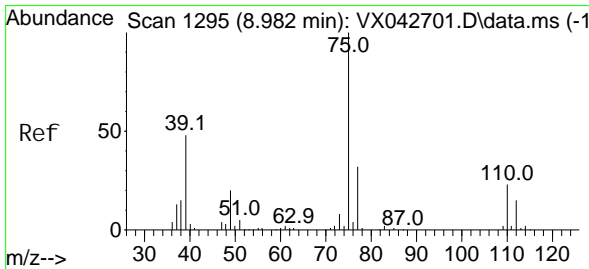
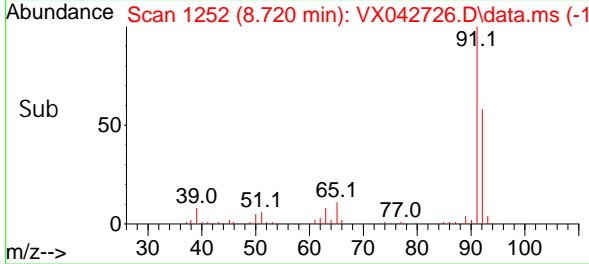
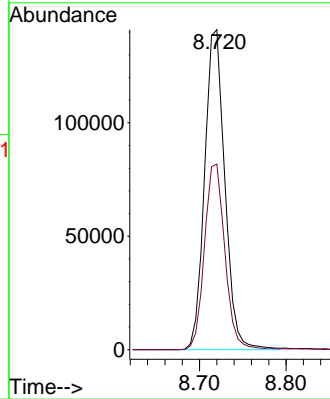


#42
 Tol uene
 Concen: 47.949 ug/L
 RT: 8.720 min Scan# 1252
 Delta R.T. 0.000 min
 Lab File: VX042726.D
 Acq: 30 Jul 2024 04:59

Instrument : MSVOA_X
 ClientSampleId :

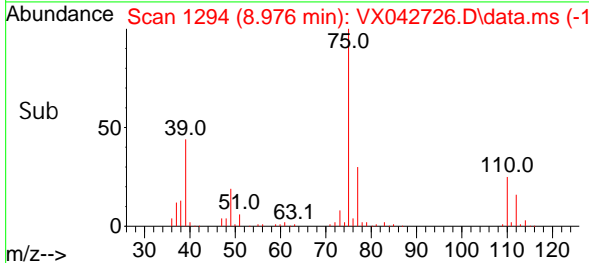
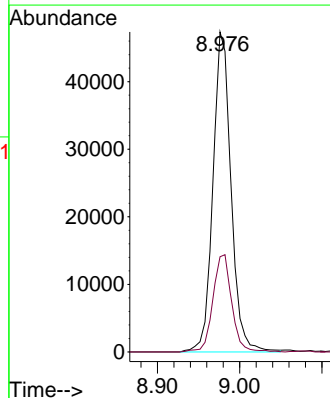
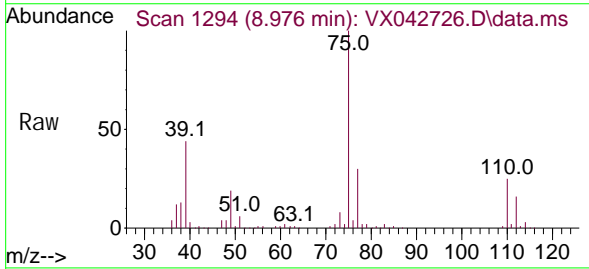


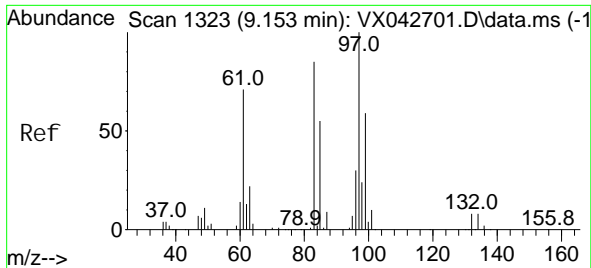
Tgt Ion: 91 Resp: 229246
 Ion Ratio Lower Upper
 91 100
 92 58.0 41.9 77.7



#44
 trans-1, 3-Di chl oroprene
 Concen: 43.154 ug/L
 RT: 8.976 min Scan# 1294
 Delta R.T. -0.006 min
 Lab File: VX042726.D
 Acq: 30 Jul 2024 04:59

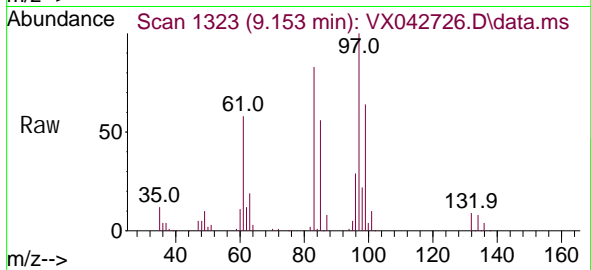
Tgt Ion: 75 Resp: 72439
 Ion Ratio Lower Upper
 75 100
 77 29.7 22.0 40.8



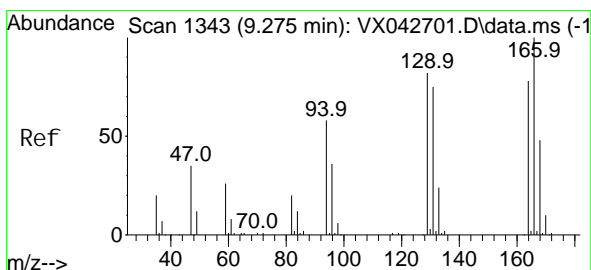
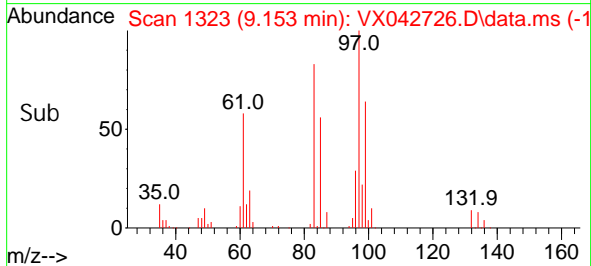
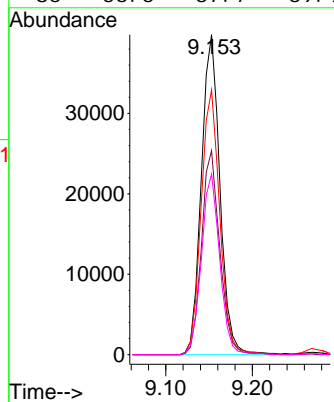


#45
 1, 1, 2-Tri chloroethane
 Concen: 48.660 ug/L
 RT: 9.153 min Scan# 1323
 Delta R.T. 0.000 min
 Lab File: VX042726.D
 Acq: 30 Jul 2024 04:59

Instrument : MSVOA_X
 ClientSampleId :

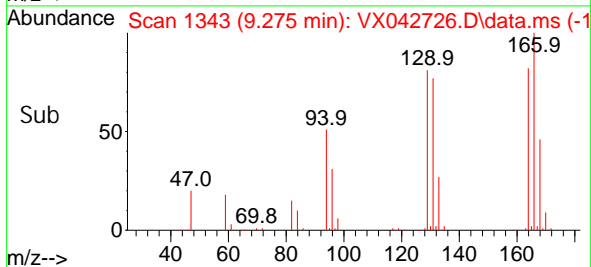
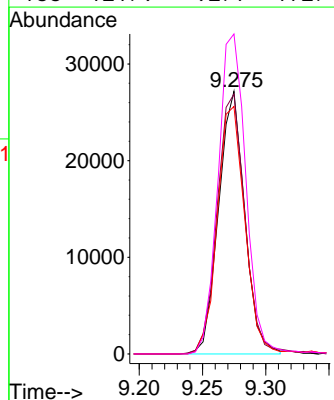
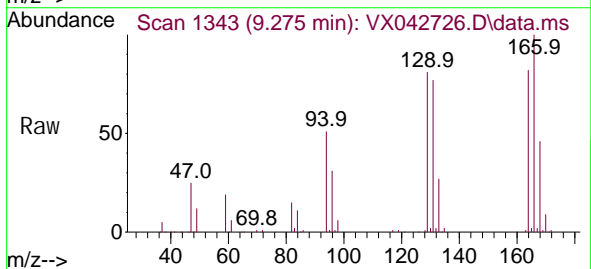


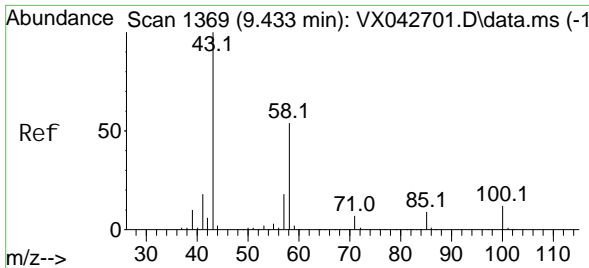
Tgt Ion: 97 Resp: 59292
 Ion Ratio Lower Upper
 97 100
 99 63.7 42.6 79.2
 83 82.7 59.3 110.1
 85 56.5 37.7 69.9



#46
 Tetrachloroethene
 Concen: 46.039 ug/L
 RT: 9.275 min Scan# 1343
 Delta R.T. 0.000 min
 Lab File: VX042726.D
 Acq: 30 Jul 2024 04:59

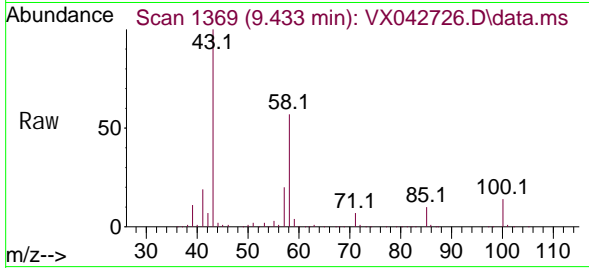
Tgt Ion: 164 Resp: 38939
 Ion Ratio Lower Upper
 164 100
 129 99.0 74.2 137.8
 131 94.3 66.9 124.3
 166 121.9 92.7 172.1





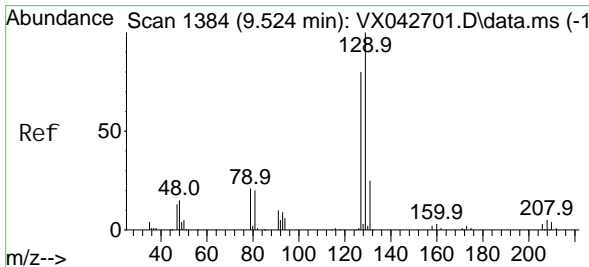
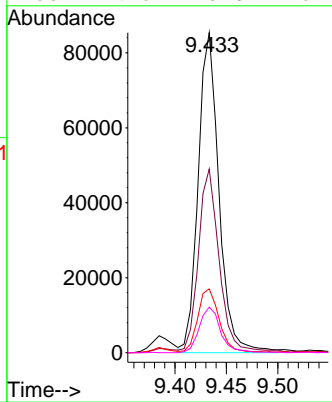
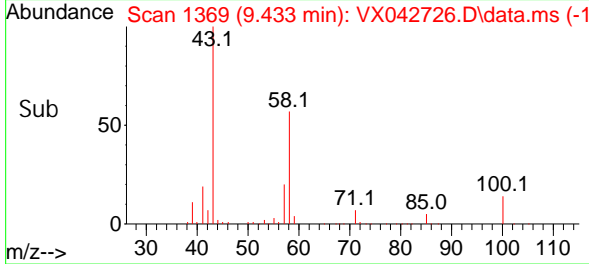
#48
 2-Hexanone
 Concen: 93.372 ug/L
 RT: 9.433 min Scan# 1369
 Delta R.T. 0.000 min
 Lab File: VX042726.D
 Acq: 30 Jul 2024 04:59

Instrument : MSVOA_X
 ClientSampleId :

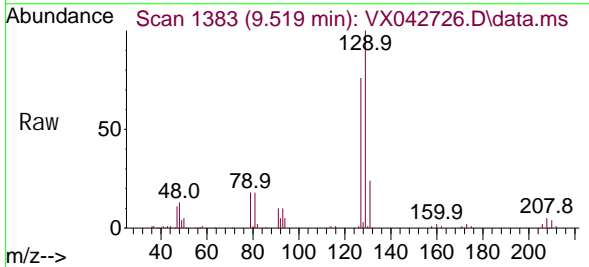


Tgt Ion: 43 Resp: 120534

Ion	Ratio	Lower	Upper
43	100		
58	55.4	44.9	67.3
57	20.7	15.8	23.6
100	14.5	10.8	16.2

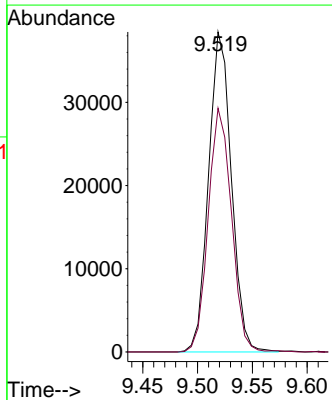
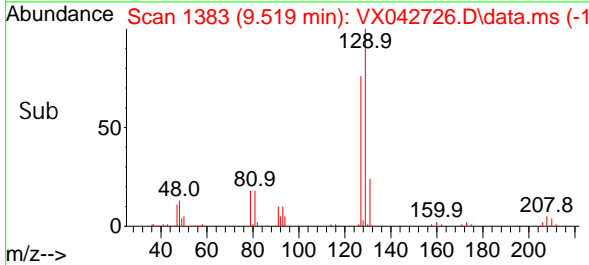


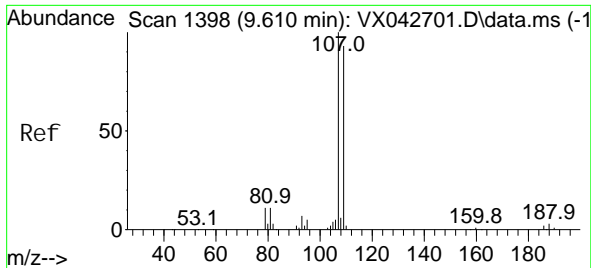
#49
 Di bromochloromethane
 Concen: 48.955 ug/L
 RT: 9.519 min Scan# 1383
 Delta R.T. -0.006 min
 Lab File: VX042726.D
 Acq: 30 Jul 2024 04:59



Tgt Ion: 129 Resp: 55701

Ion	Ratio	Lower	Upper
129	100		
127	76.1	57.4	106.6



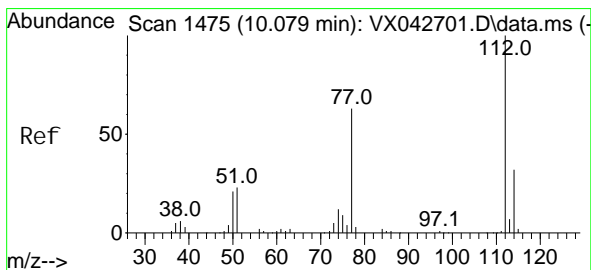
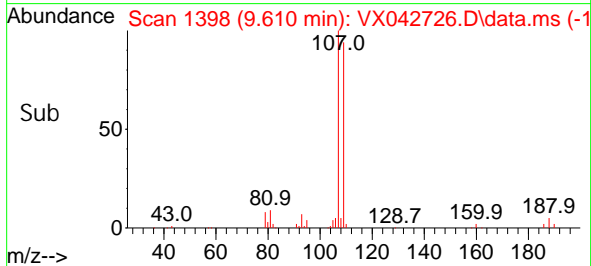
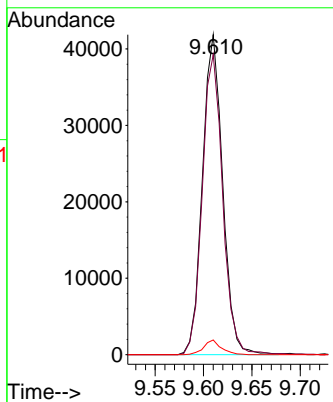
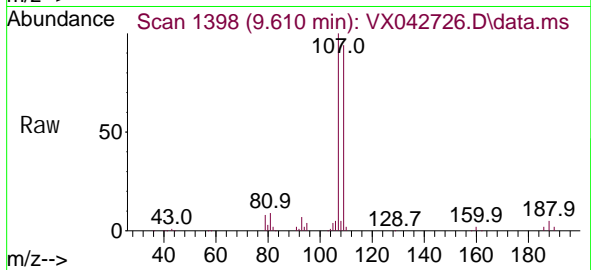


#50
 1,2-Di bromoethane
 Concen: 48.231 ug/L
 RT: 9.610 min Scan# 1398
 Delta R.T. 0.000 min
 Lab File: VX042726.D
 Acq: 30 Jul 2024 04:59

Instrument : MSVOA_X
 ClientSampleId :

Tgt Ion: 107 Resp: 61123

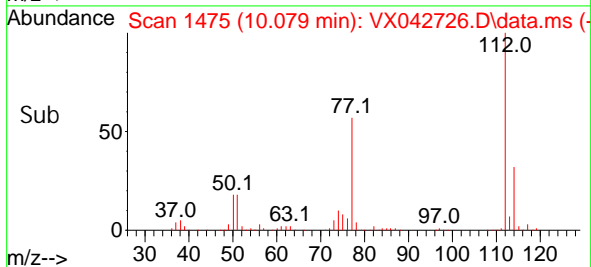
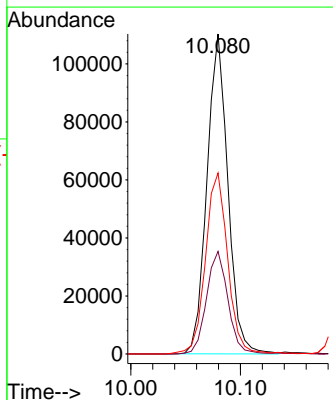
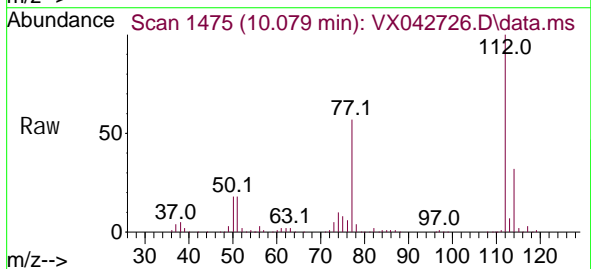
Ion	Ratio	Lower	Upper
107	100		
109	93.7	65.4	121.4
188	4.6	2.2	3.2

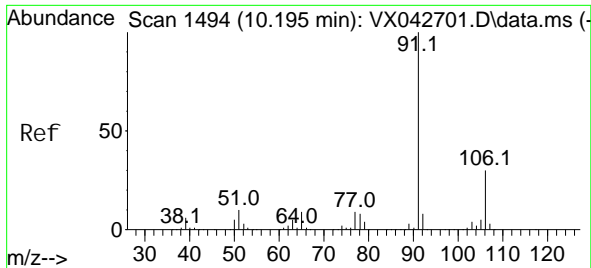


#51
 Chlorobenzene
 Concen: 47.263 ug/L
 RT: 10.079 min Scan# 1475
 Delta R.T. 0.000 min
 Lab File: VX042726.D
 Acq: 30 Jul 2024 04:59

Tgt Ion: 112 Resp: 146127

Ion	Ratio	Lower	Upper
112	100		
114	32.1	23.2	43.2
77	56.5	46.3	69.5

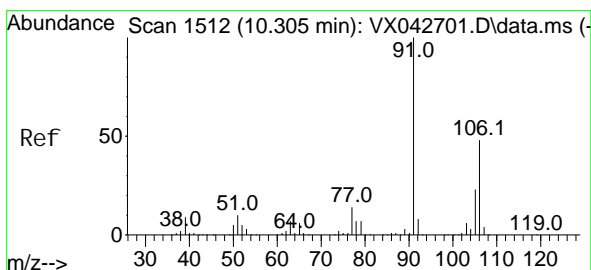
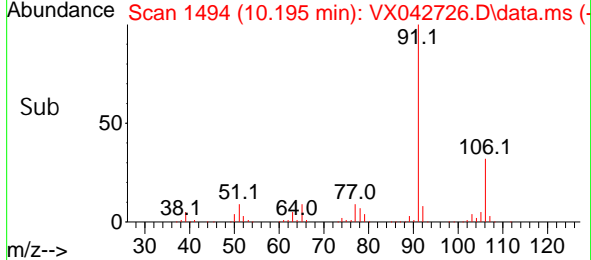
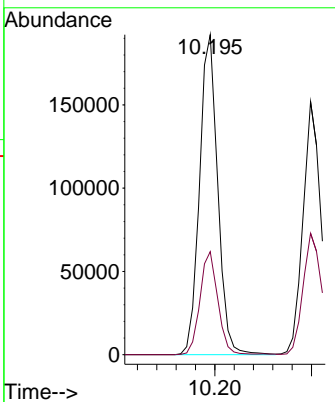
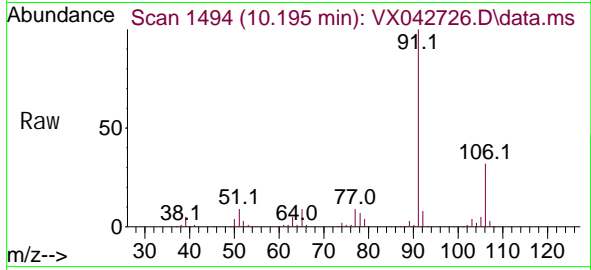




#52
 Ethyl benzene
 Concen: 47.961 ug/L
 RT: 10.195 min Scan# 1494
 Delta R.T. 0.000 min
 Lab File: VX042726.D
 Acq: 30 Jul 2024 04:59

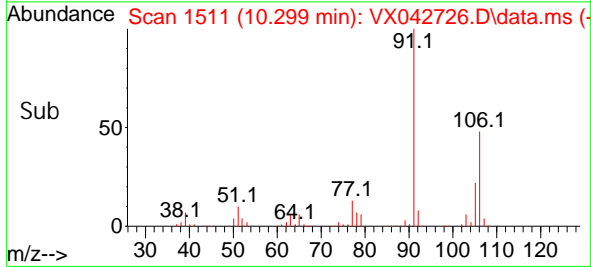
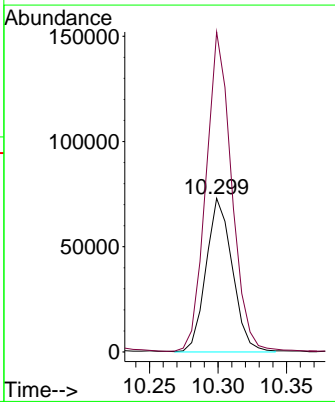
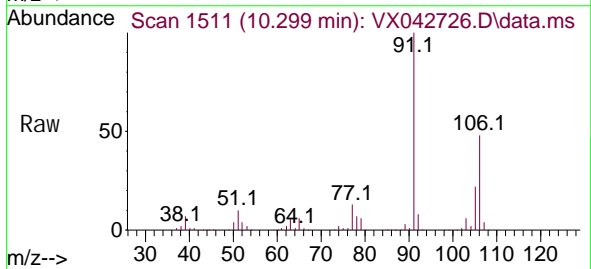
Instrument : MSVOA_X
 ClientSampleId :

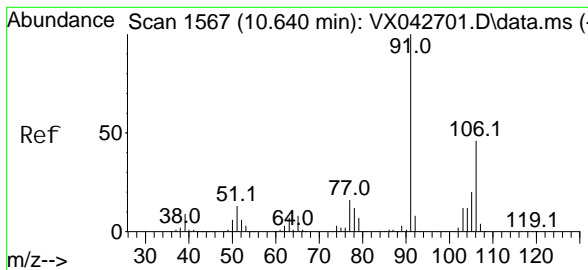
Tgt Ion: 91 Resp: 251509
 Ion Ratio Lower Upper
 91 100
 106 32.2 21.8 40.4



#53
 m, p-Xyl ene
 Concen: 49.435 ug/L
 RT: 10.299 min Scan# 1511
 Delta R.T. -0.006 min
 Lab File: VX042726.D
 Acq: 30 Jul 2024 04:59

Tgt Ion: 106 Resp: 97659
 Ion Ratio Lower Upper
 106 100
 91 208.4 146.8 272.6

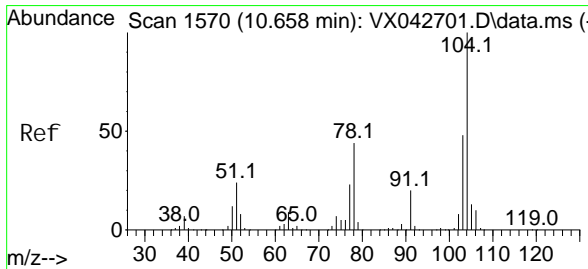
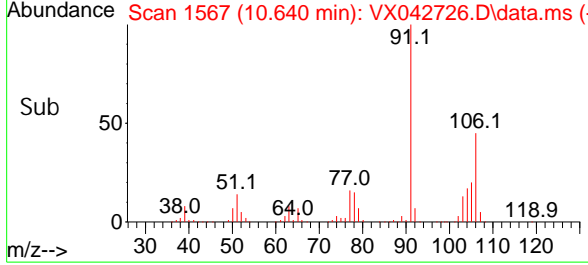
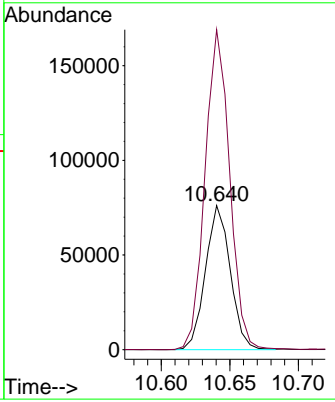
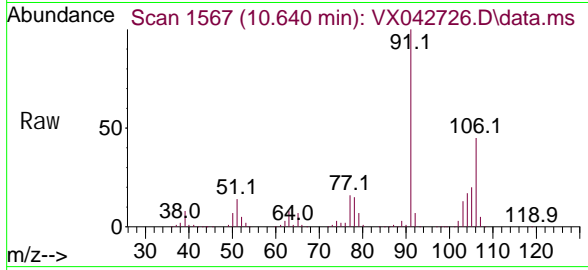




#54
 o-Xyl ene
 Concen: 48.859 ug/L
 RT: 10.640 min Scan# 1567
 Delta R.T. 0.000 min
 Lab File: VX042726.D
 Acq: 30 Jul 2024 04:59

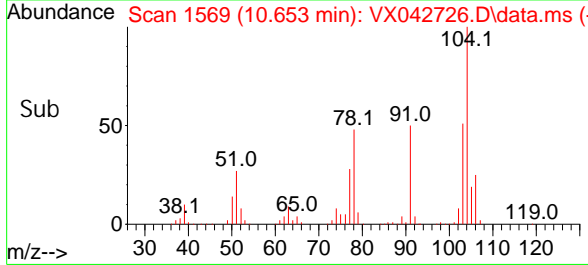
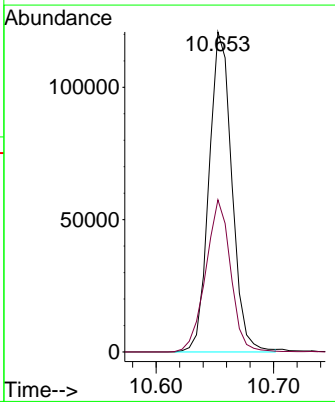
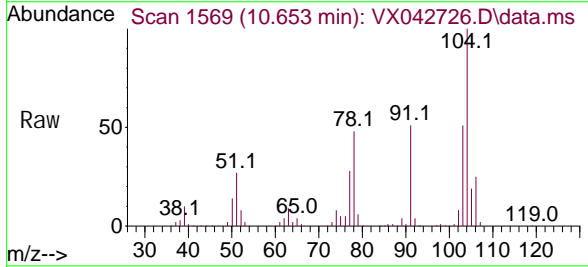
Instrument : MSVOA_X
 ClientSampleId :

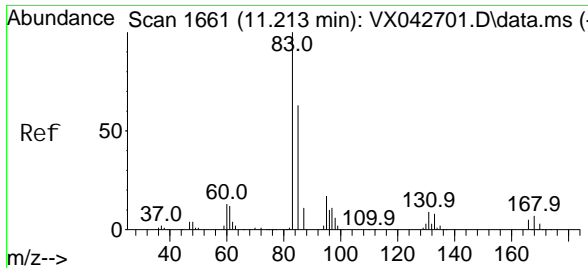
Tgt Ion: 106 Resp: 96016
 Ion Ratio Lower Upper
 106 100
 91 221.9 154.6 287.2



#55
 Styrene
 Concen: 49.889 ug/L
 RT: 10.653 min Scan# 1569
 Delta R.T. -0.006 min
 Lab File: VX042726.D
 Acq: 30 Jul 2024 04:59

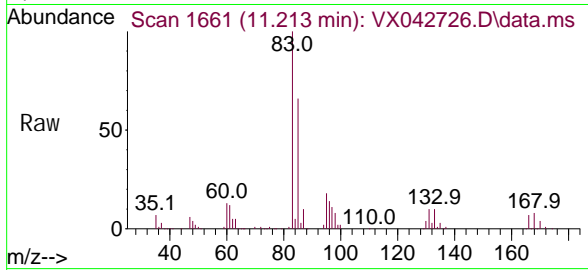
Tgt Ion: 104 Resp: 163431
 Ion Ratio Lower Upper
 104 100
 78 47.6 32.6 60.5



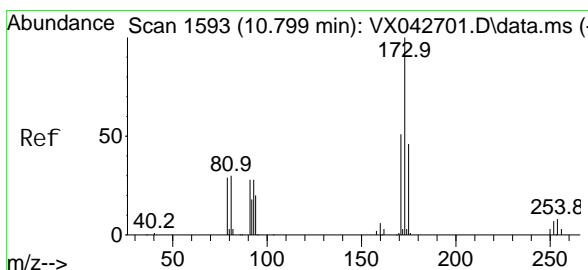
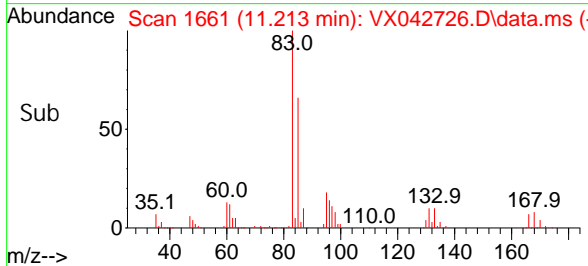
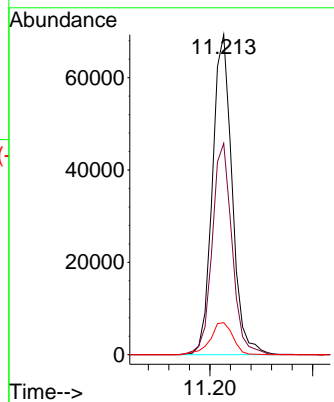


#57
 1, 1, 2, 2-Tetrachloroethane
 Concen: 47.356 ug/L
 RT: 11.213 min Scan# 1661
 Delta R.T. 0.000 min
 Lab File: VX042726.D
 Acq: 30 Jul 2024 04:59

Instrument : MSVOA_X
 ClientSampleId :

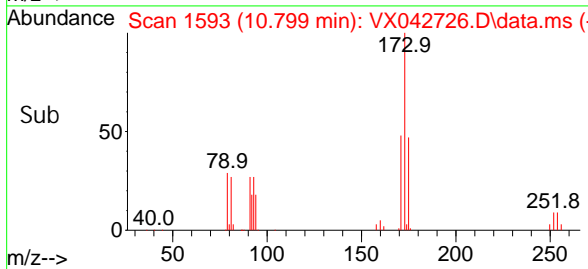
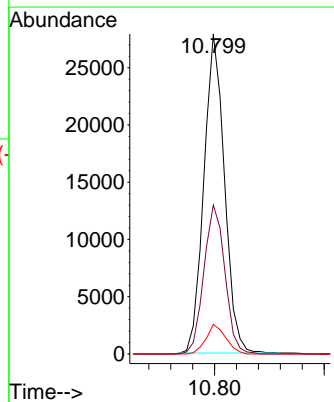
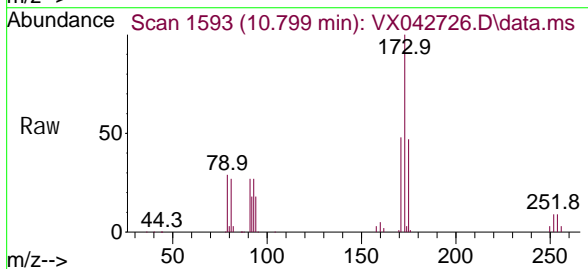


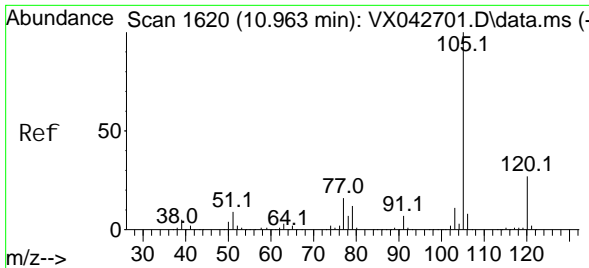
Tgt Ion: 83 Resp: 92276
 Ion Ratio Lower Upper
 83 100
 85 66.1 46.1 85.5
 131 10.0 8.6 13.0



#59
 Bromoform
 Concen: 47.653 ug/L
 RT: 10.799 min Scan# 1593
 Delta R.T. 0.000 min
 Lab File: VX042726.D
 Acq: 30 Jul 2024 04:59

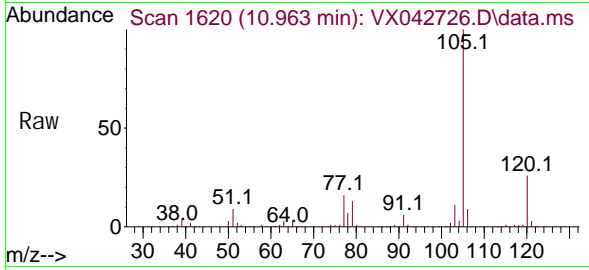
Tgt Ion: 173 Resp: 36289
 Ion Ratio Lower Upper
 173 100
 175 47.6 37.4 56.2
 254 8.9 6.8 10.2





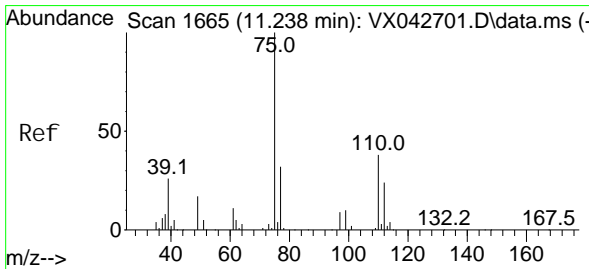
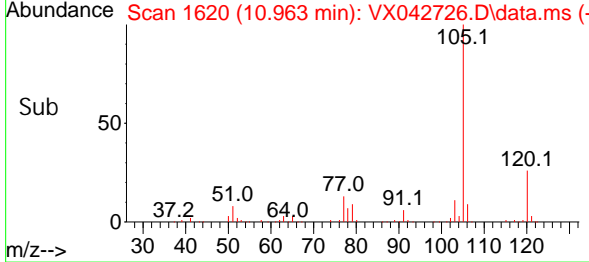
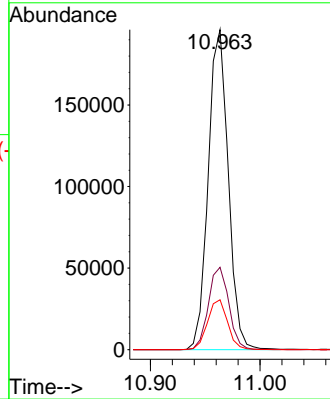
#60
 Isopropyl benzene
 Concen: 48.588 ug/L
 RT: 10.963 min Scan# 1620
 Delta R.T. 0.000 min
 Lab File: VX042726.D
 Acq: 30 Jul 2024 04:59

Instrument : MSVOA_X
 ClientSampleId :

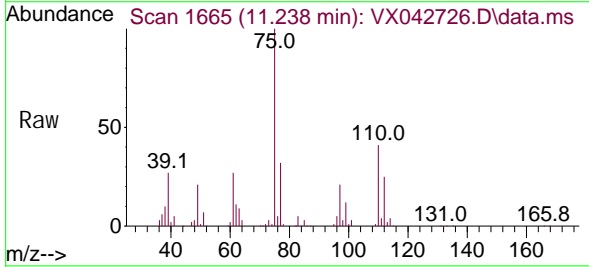


Tgt Ion: 105 Resp: 249129

Ion	Ratio	Lower	Upper
105	100		
120	26.1	21.0	31.6
77	15.7	12.9	19.3

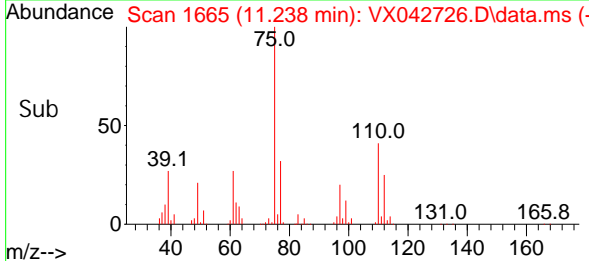
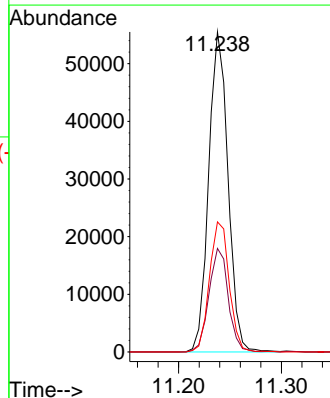


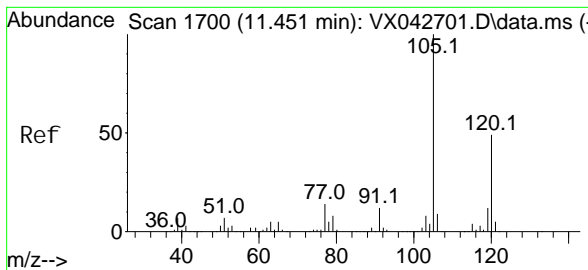
#61
 1,2,3-Trichloropropane
 Concen: 46.241 ug/L
 RT: 11.238 min Scan# 1665
 Delta R.T. 0.000 min
 Lab File: VX042726.D
 Acq: 30 Jul 2024 04:59



Tgt Ion: 75 Resp: 72594

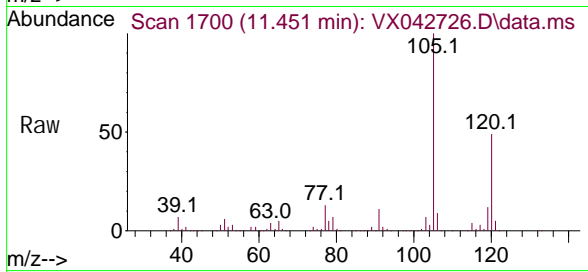
Ion	Ratio	Lower	Upper
75	100		
77	32.4	26.2	39.4
110	41.6	33.0	49.4



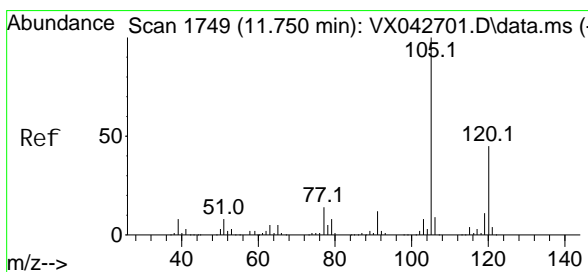
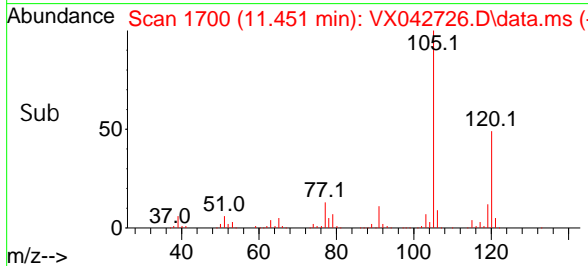
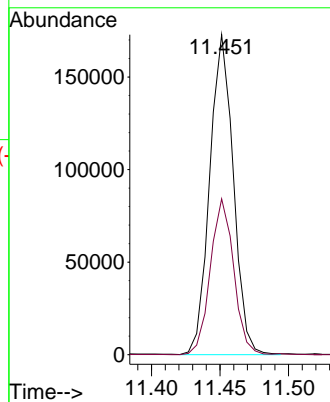


#62
 1, 3, 5-Tri methyl benzene
 Concen: 48.596 ug/L
 RT: 11.451 min Scan# 1700
 Delta R.T. 0.000 min
 Lab File: VX042726.D
 Acq: 30 Jul 2024 04:59

Instrument : MSVOA_X
 ClientSampleId :

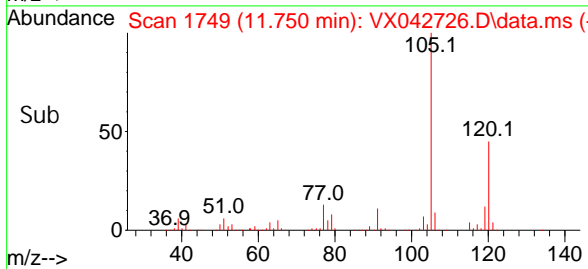
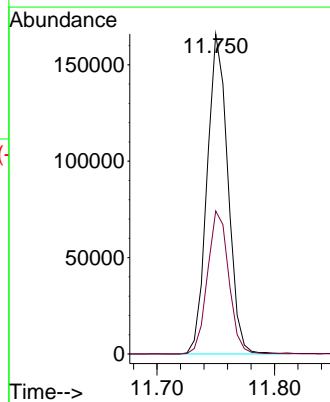
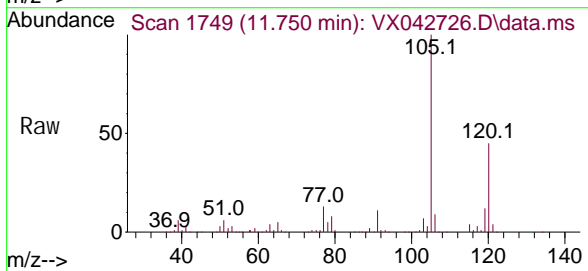


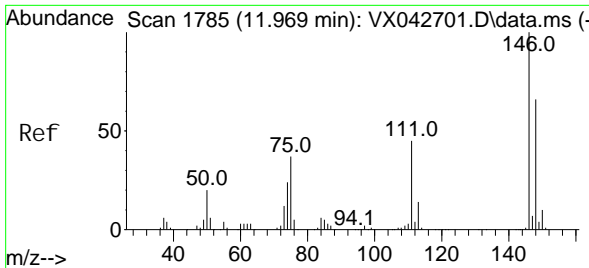
Tgt Ion: 105 Resp: 207232
 Ion Ratio Lower Upper
 105 100
 120 48.0 38.2 57.2



#63
 1, 2, 4-Tri methyl benzene
 Concen: 48.363 ug/L
 RT: 11.750 min Scan# 1749
 Delta R.T. 0.000 min
 Lab File: VX042726.D
 Acq: 30 Jul 2024 04:59

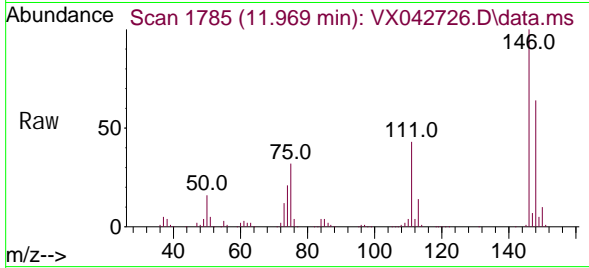
Tgt Ion: 105 Resp: 203640
 Ion Ratio Lower Upper
 105 100
 120 45.7 35.2 52.8



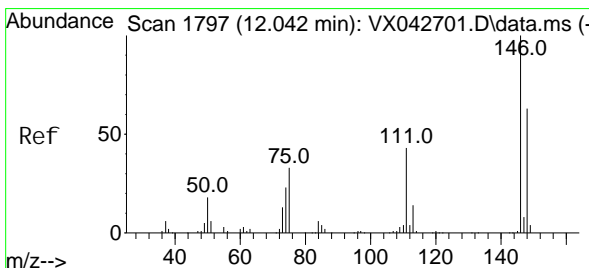
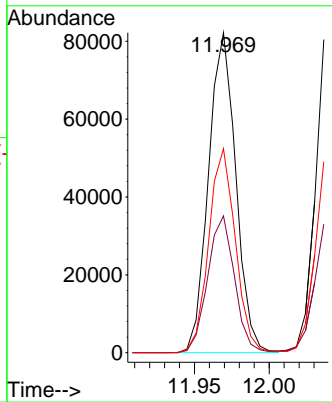
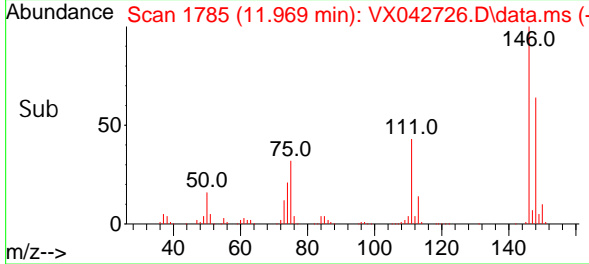


#64
 1, 3-Di chl orobenzene
 Concen: 47.392 ug/L
 RT: 11.969 min Scan# 1785
 Delta R.T. 0.000 min
 Lab File: VX042726.D
 Acq: 30 Jul 2024 04:59

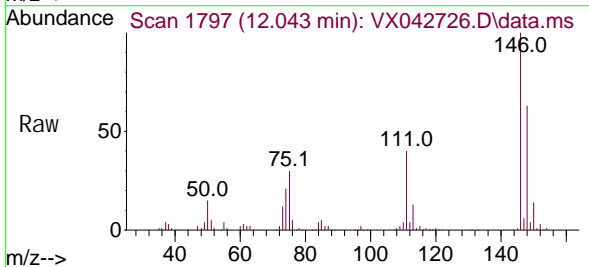
Instrument : MSVOA_X
 ClientSampleId :



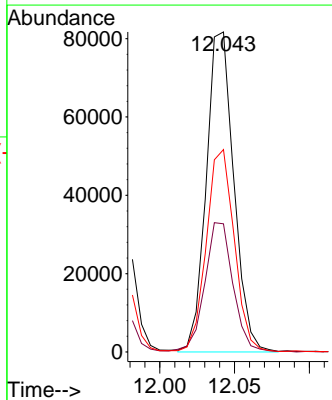
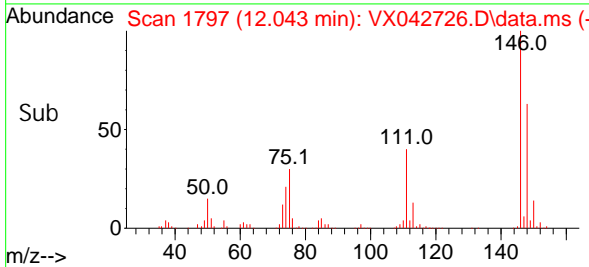
Tgt Ion: 146 Resp: 104509
 Ion Ratio Lower Upper
 146 100
 111 42.8 30.4 56.5
 148 63.8 47.7 88.7

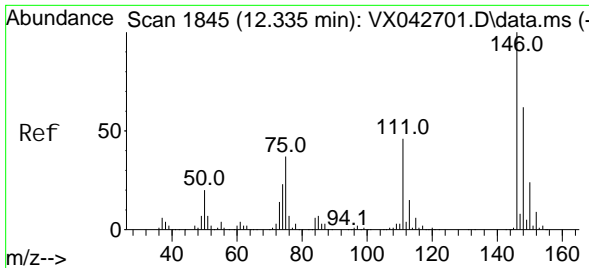


#65
 1, 4-Di chl orobenzene
 Concen: 47.210 ug/L
 RT: 12.043 min Scan# 1797
 Delta R.T. 0.000 min
 Lab File: VX042726.D
 Acq: 30 Jul 2024 04:59



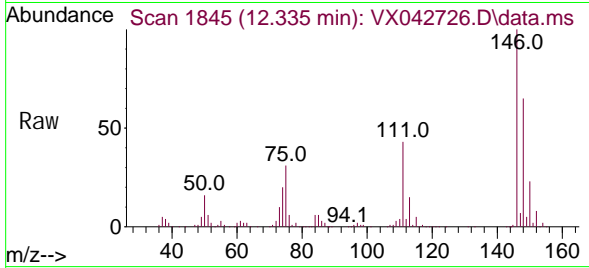
Tgt Ion: 146 Resp: 104860
 Ion Ratio Lower Upper
 146 100
 111 40.1 27.9 51.7
 148 63.2 44.1 81.9



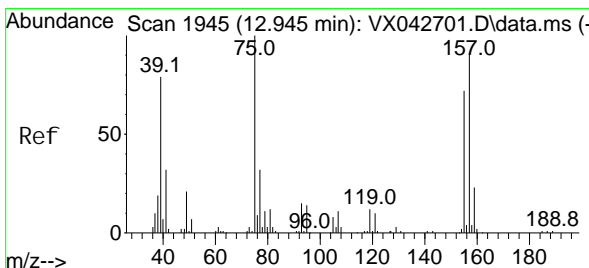
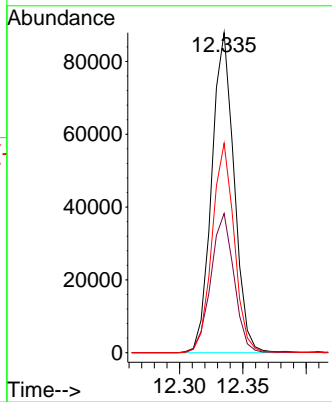
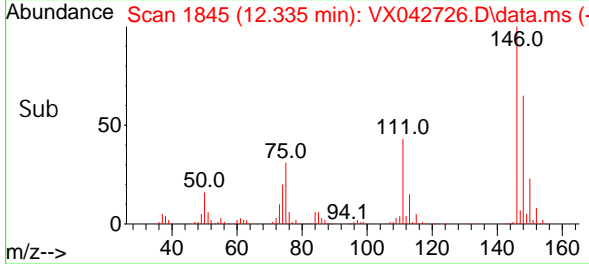


#67
 1, 2-Di chl orobenzene
 Concen: 48.629 ug/L
 RT: 12.335 min Scan# 1844
 Delta R.T. 0.000 min
 Lab File: VX042726.D
 Acq: 30 Jul 2024 04:59

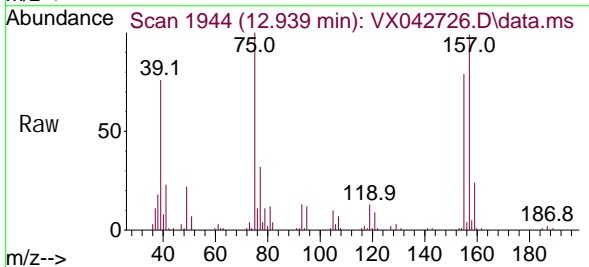
Instrument : MSVOA_X
 ClientSampleId :



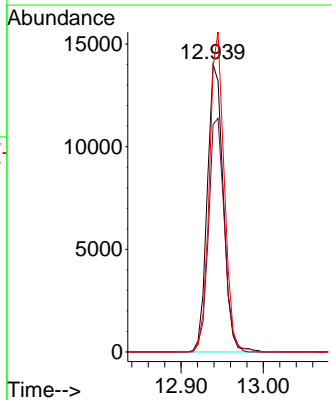
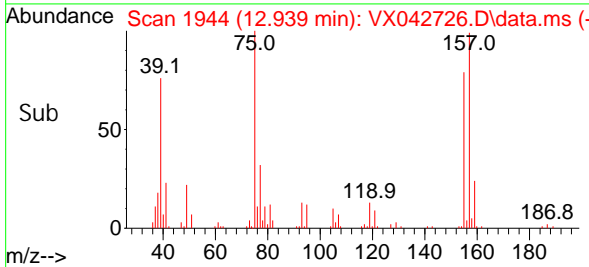
Tgt Ion: 146 Resp: 107984
 Ion Ratio Lower Upper
 146 100
 111 43.5 35.3 52.9
 148 65.5 52.7 79.1

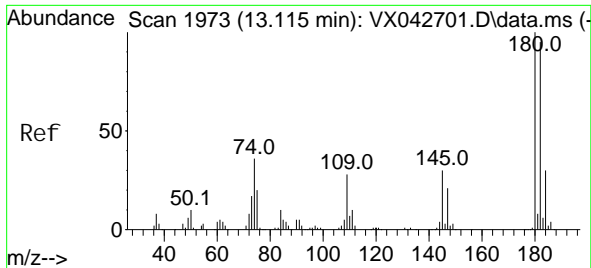


#68
 1, 2-Di bromo-3- chl oropropane
 Concen: 45.080 ug/L
 RT: 12.939 min Scan# 1944
 Delta R.T. -0.006 min
 Lab File: VX042726.D
 Acq: 30 Jul 2024 04:59



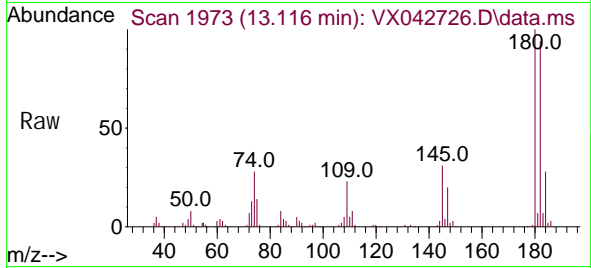
Tgt Ion: 75 Resp: 18854
 Ion Ratio Lower Upper
 75 100
 155 79.1 65.1 97.7
 157 99.2 85.8 128.6



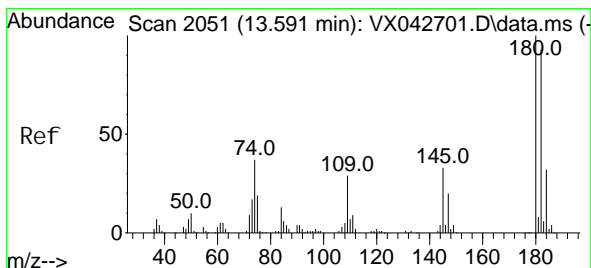
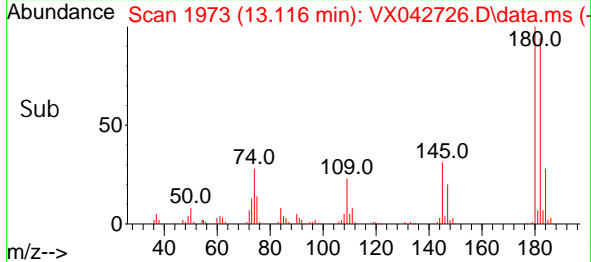
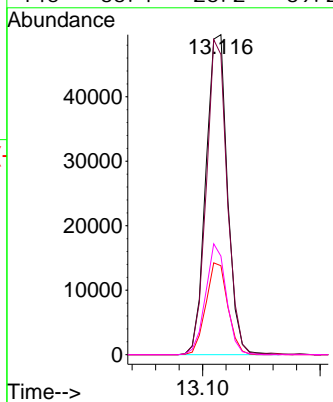


#69
 1, 3, 5-Tri chlorobenzene
 Concen: 46.134 ug/L
 RT: 13.116 min Scan# 1973
 Delta R.T. 0.000 min
 Lab File: VX042726.D
 Acq: 30 Jul 2024 04:59

Instrument : MSVOA_X
 ClientSampleId :

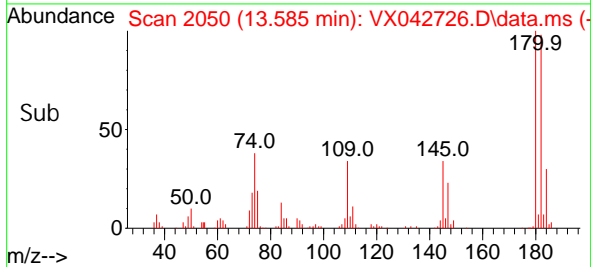
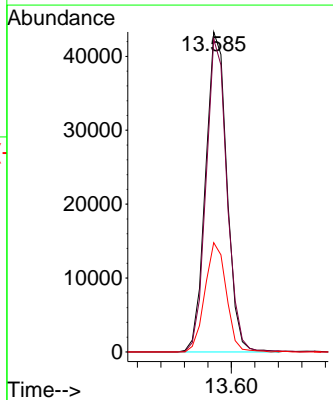
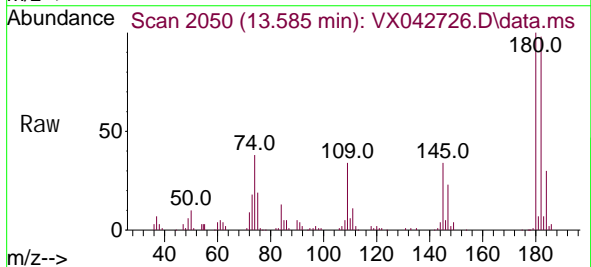


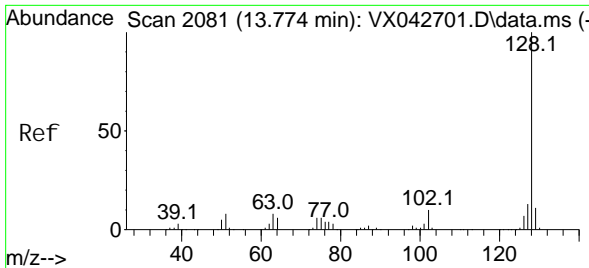
Tgt Ion: 180 Resp: 63101
 Ion Ratio Lower Upper
 180 100
 182 95.3 75.4 113.0
 184 29.2 23.4 35.0
 145 33.4 26.2 39.2



#70
 1, 2, 4-tri chlorobenzene
 Concen: 45.372 ug/L
 RT: 13.585 min Scan# 2050
 Delta R.T. -0.006 min
 Lab File: VX042726.D
 Acq: 30 Jul 2024 04:59

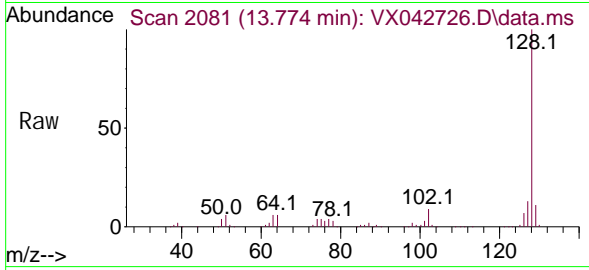
Tgt Ion: 180 Resp: 54422
 Ion Ratio Lower Upper
 180 100
 182 96.2 77.0 115.4
 145 34.2 27.0 40.6



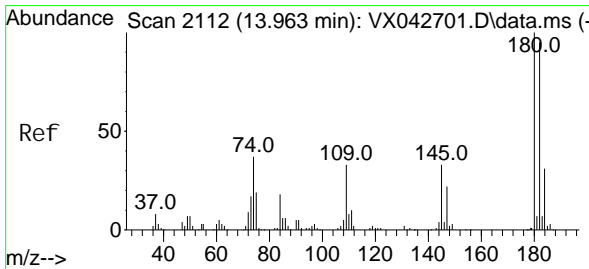
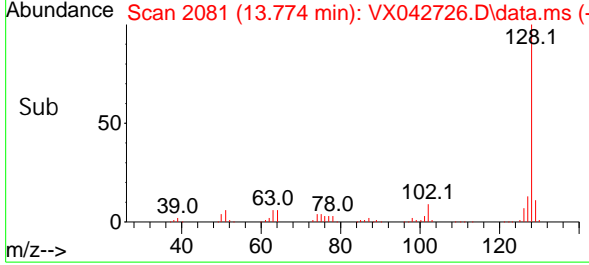
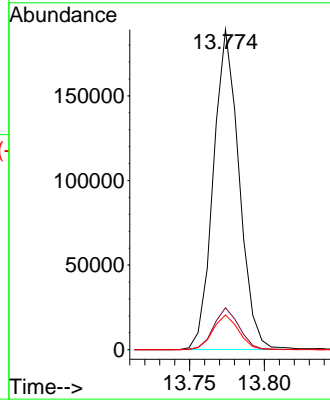


#71
 Naphthalene
 Concen: 48.877 ug/L
 RT: 13.774 min Scan# 2081
 Delta R.T. 0.000 min
 Lab File: VX042726.D
 Acq: 30 Jul 2024 04:59

Instrument : MSVOA_X
 ClientSampleId :



Tgt Ion: 128 Resp: 226150
 Ion Ratio Lower Upper
 128 100
 127 13.0 10.3 15.5
 129 10.9 8.7 13.1



#72
 1,2,3-Trichlorobenzene
 Concen: 48.252 ug/L
 RT: 13.957 min Scan# 2111
 Delta R.T. -0.006 min
 Lab File: VX042726.D
 Acq: 30 Jul 2024 04:59

Tgt Ion: 180 Resp: 59952
 Ion Ratio Lower Upper
 180 100
 182 95.6 76.2 114.2
 145 36.8 27.6 41.4

