

Data Path : Z:\VOASRV\HPCHEM1\MSVOA X\DATA\VX073118\
 Data File : VX003755.D
 Acq On : 31 Jul 2018 17:25
 Operator : JC/SP
 Sample : J4121-06
 Misc : 7.54G/5.0mL/MSVOA X/SOIL
 ALS Vial : 10 Sample Multiplier: 1

Instrument :
 MSVOA_X
ClientSampleId :
 GW-03(8-10)

Quant Time: Aug 01 03:15:00 2018
 Quant Method : Z:\VOASRV\HPCHEM1\MSVOA_X\METHOD\82X073018S.M
 Quant Title : SW846 8260
 QLast Update : Tue Jul 31 11:17:41 2018
 Response via : Initial Calibration

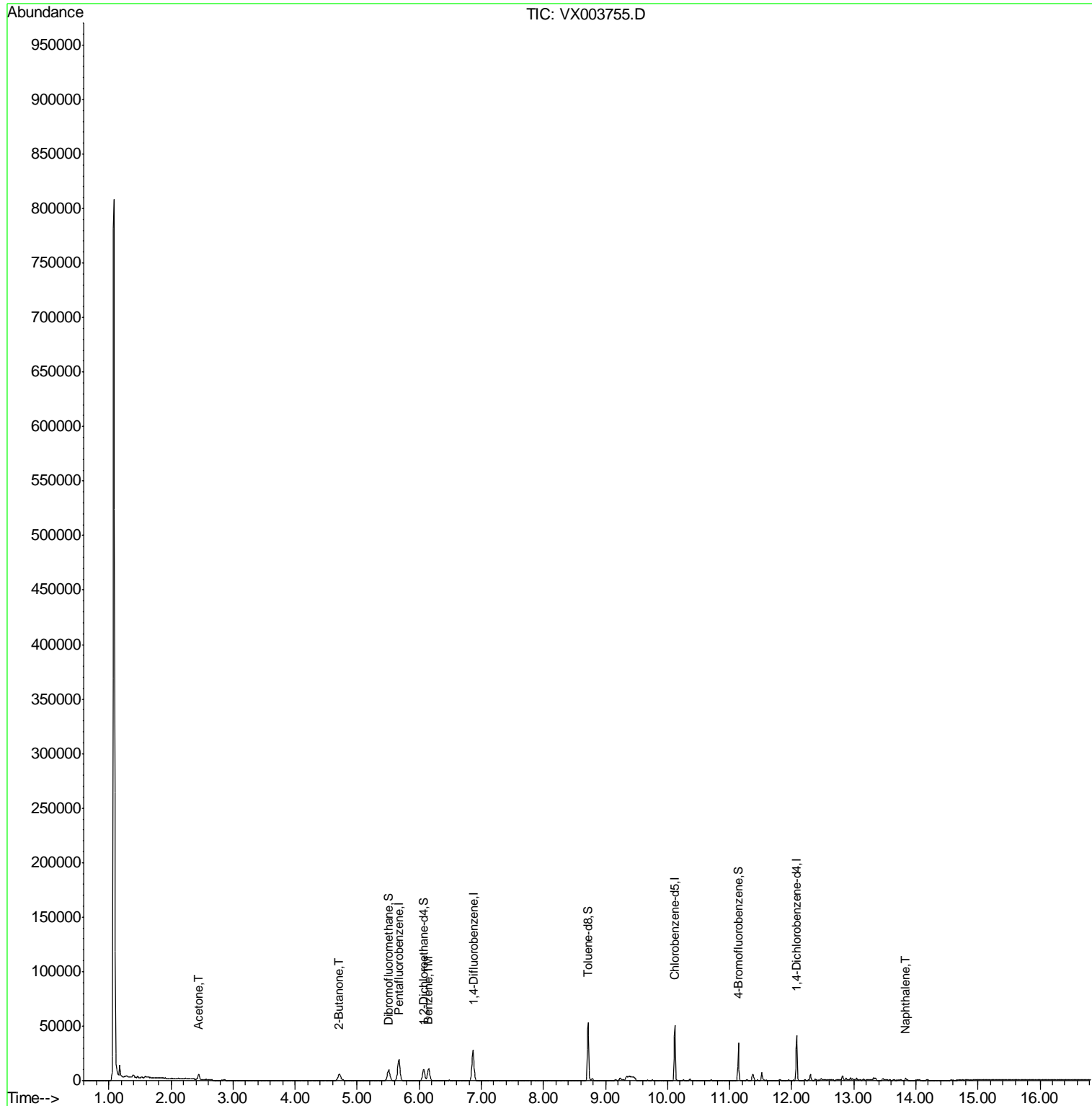
Internal Standards	R.T.	QIon	Response	Conc	Units	Dev(Min)
1) Pentafluorobenzene	5.67	168	19790	50.00	ug/l	0.00
34) 1,4-Difluorobenzene	6.87	114	27656	50.00	ug/l	0.00
63) Chlorobenzene-d5	10.12	117	22926	50.00	ug/l	0.00
72) 1,4-Dichlorobenzene-d4	12.08	152	8518	50.00	ug/l	0.00
System Monitoring Compounds						
33) 1,2-Dichloroethane-d4	6.07	65	9570	47.81	ug/l	0.00
Spiked Amount	50.000		Recovery	=	95.62%	
35) Dibromofluoromethane	5.51	113	8674	53.27	ug/l	0.00
Spiked Amount	50.000		Recovery	=	106.54%	
50) Toluene-d8	8.72	98	31721	46.72	ug/l	0.00
Spiked Amount	50.000		Recovery	=	93.44%	
62) 4-Bromofluorobenzene	11.14	95	8329	33.27	ug/l	0.00
Spiked Amount	50.000		Recovery	=	66.54%	
Target Compounds						
16) Acetone	2.45	43	5126	67.05	ug/l	97
25) 2-Butanone	4.70	43	1521	13.65	ug/l	91
40) Benzene	6.15	78	13159	17.73	ug/l	100
95) Naphthalene	13.84	128	1169	2.63	ug/l	95

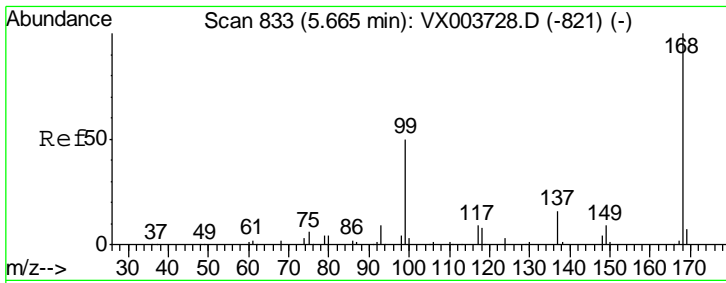
(#) = qualifier out of range (m) = manual integration (+) = signals summed

Data Path : Z:\VOASRV\HPCHEM1\MSVOA X\DATA\VX073118\
 Data File : VX003755.D
 Acq On : 31 Jul 2018 17:25
 Operator : JC/SP
 Sample : J4121-06
 Misc : 7.54G/5.0mL/MSVOA X/SOIL
 ALS Vial : 10 Sample Multiplier: 1

Instrument :
 MSVOA_X
 ClientSampled :
 GW-03(8-10)

Quant Time: Aug 01 03:15:00 2018
 Quant Method : Z:\VOASRV\HPCHEM1\MSVOA_X\METHOD\82X073018S.M
 Quant Title : SW846 8260
 QLast Update : Tue Jul 31 11:17:41 2018
 Response via : Initial Calibration

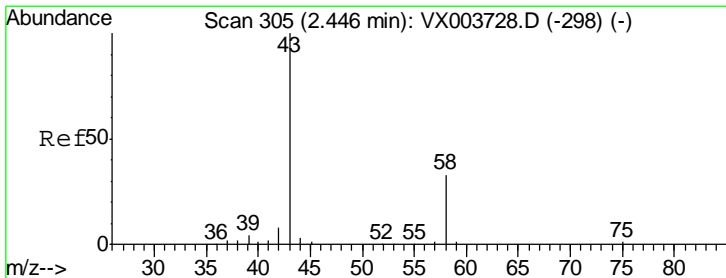
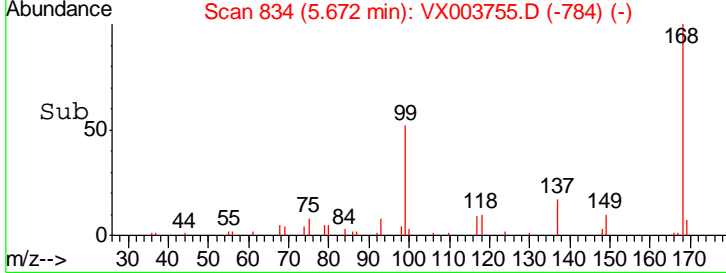
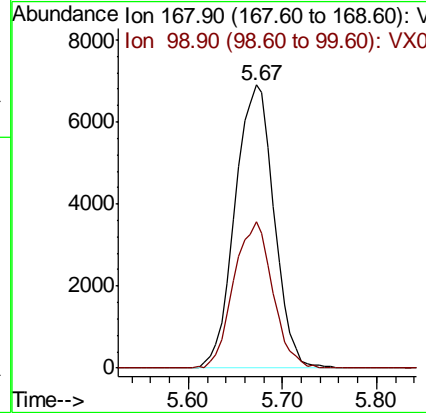
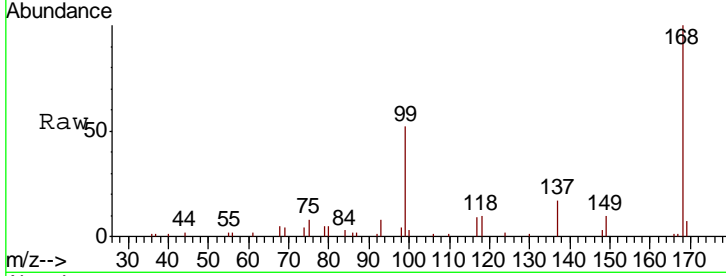




#1
 Pentafluorobenzene
 Concen: 50.00 ug/l
 RT: 5.67 min Scan# 834
 Delta R.T. 0.01 min
 Lab File: VX003755.D
 Acq: 31 Jul 2018 17:25

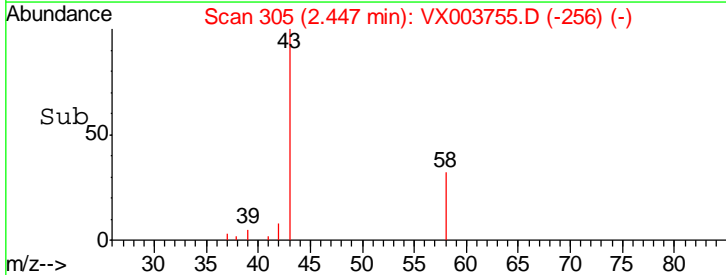
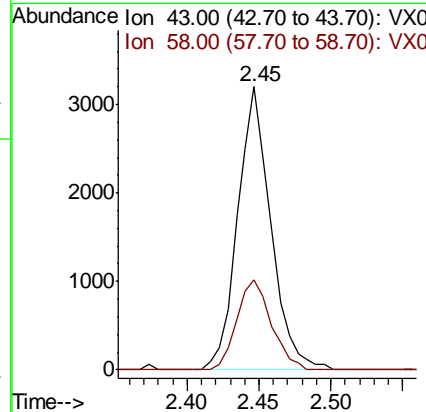
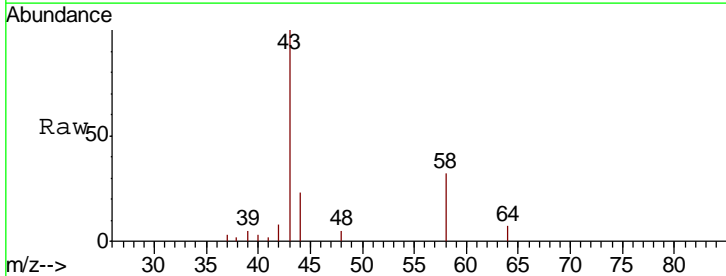
Instrument :
 MSVOA_X
 ClientSampled :
 GW-03(8-10)

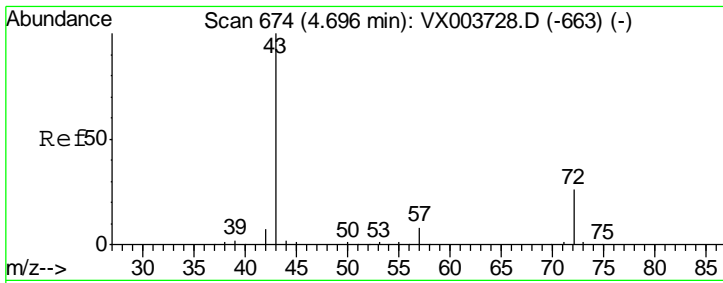
Tot Ion: 168 Resp: 19790
 Ion Ratio Lower Upper
 168 100
 99 51.6 40.2 60.2



#16
 Acetone
 Concen: 67.05 ug/l
 RT: 2.45 min Scan# 305
 Delta R.T. 0.00 min
 Lab File: VX003755.D
 Acq: 31 Jul 2018 17:25

Tgt Ion: 43 Resp: 5126
 Ion Ratio Lower Upper
 43 100
 58 31.7 26.7 40.1

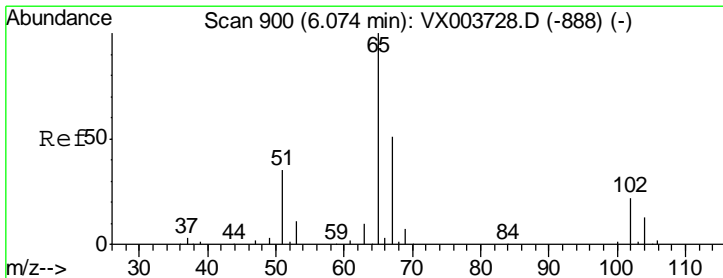
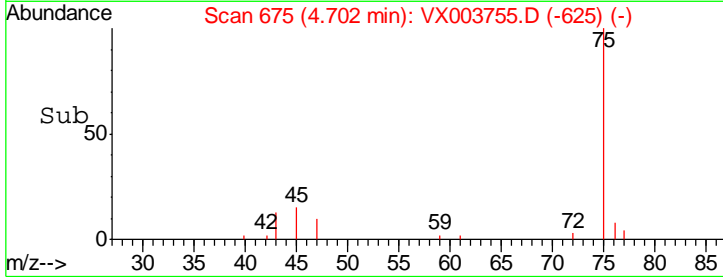
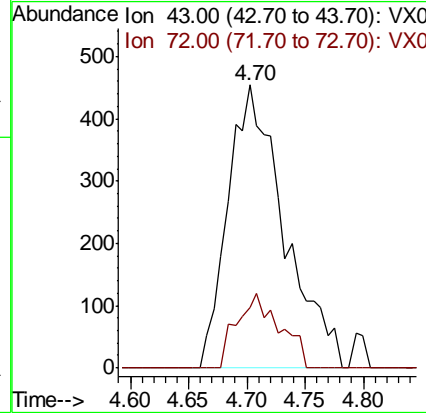
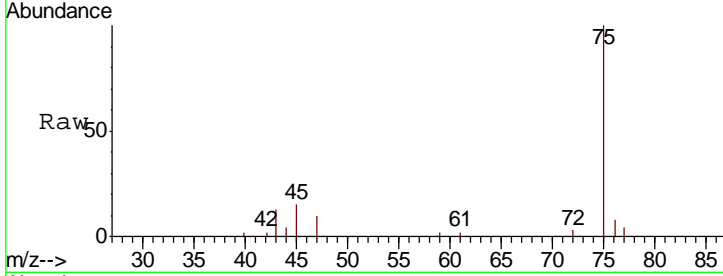




#25
 2-Butanone
 Concen: 13.65 ug/l
 RT: 4.70 min Scan# 675
 Delta R.T. 0.01 min
 Lab File: VX003755.D
 Acq: 31 Jul 2018 17:25

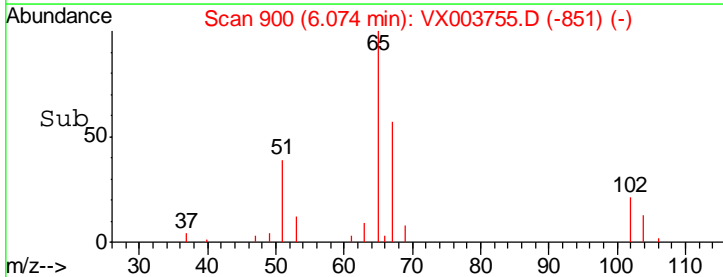
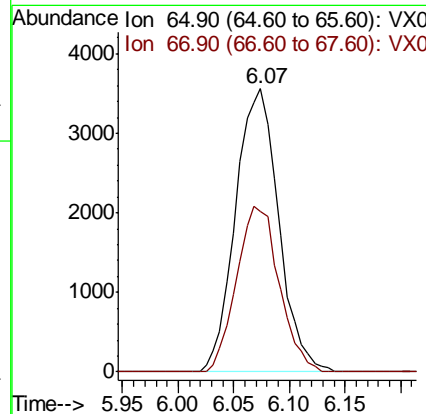
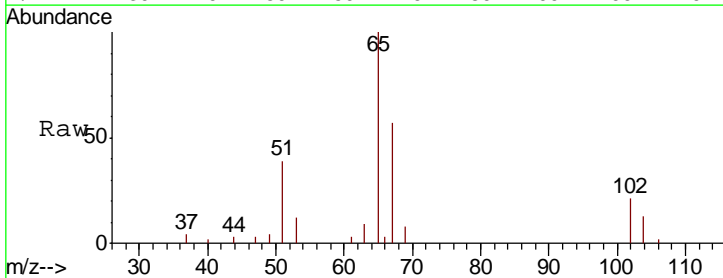
Instrument :
 MSVOA_X
 ClientSampled :
 GW-03(8-10)

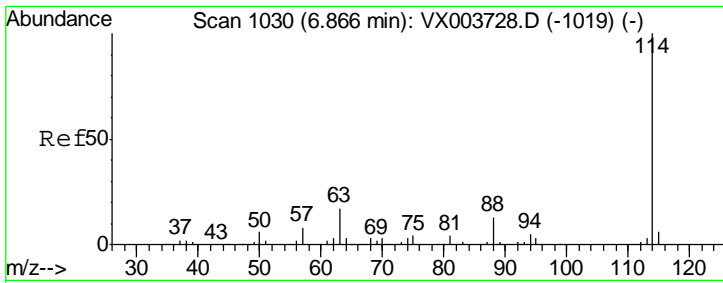
Tgt Ion	Resp	Lower	Upper
43	1521		
72	21.6	20.9	31.3



#33
 1,2-Dichloroethane-d4
 Concen: 47.81 ug/l
 RT: 6.07 min Scan# 900
 Delta R.T. 0.00 min
 Lab File: VX003755.D
 Acq: 31 Jul 2018 17:25

Tgt Ion	Resp	Lower	Upper
65	9570		
67	57.6	0.0	107.0

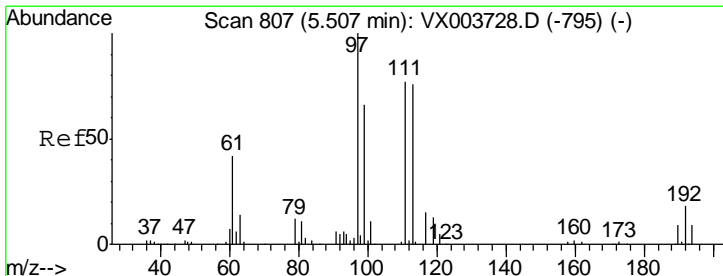
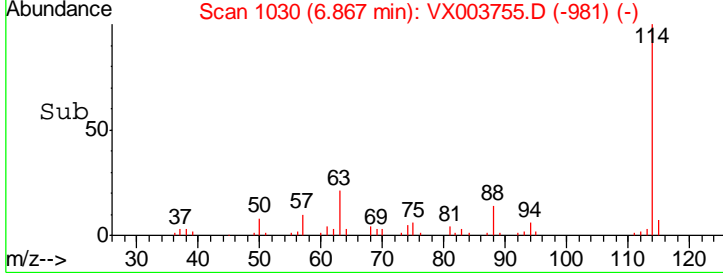
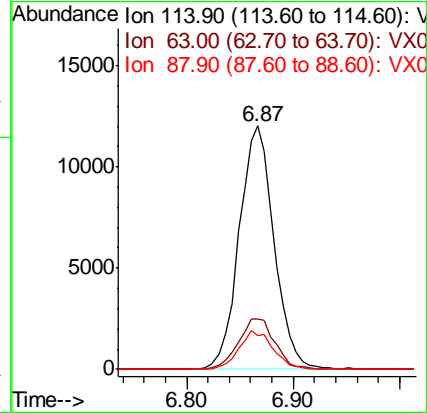
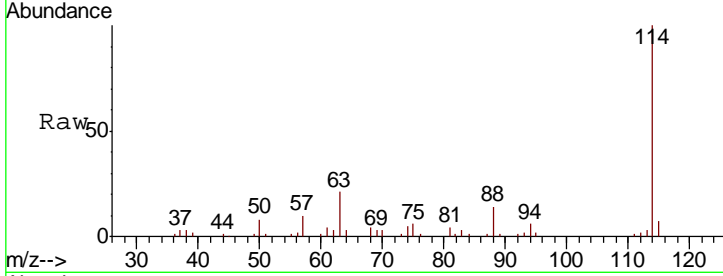




#34
 1,4-Difluorobenzene
 Concen: 50.00 ug/l
 RT: 6.87 min Scan# 1030
 Delta R.T. 0.00 min
 Lab File: VX003755.D
 Acq: 31 Jul 2018 17:25

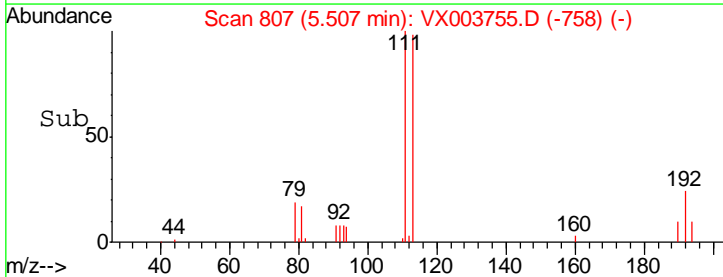
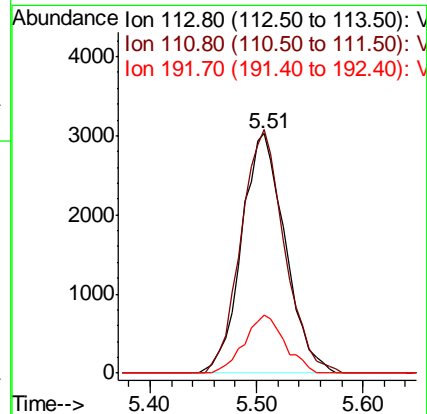
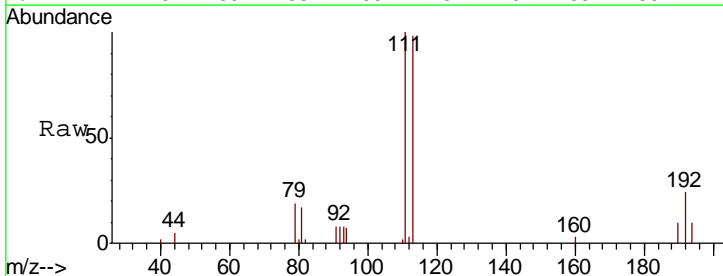
Instrument :
 MSVOA_X
 ClientSampled :
 GW-03(8-10)

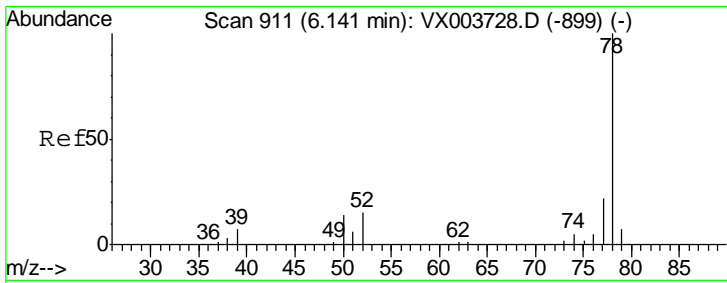
Tgt Ion	Resp	Lower	Upper
114	27656		
63	20.8	0.0	34.0
88	14.0	0.0	26.4



#35
 Dibromofluoromethane
 Concen: 53.27 ug/l
 RT: 5.51 min Scan# 807
 Delta R.T. 0.00 min
 Lab File: VX003755.D
 Acq: 31 Jul 2018 17:25

Tgt Ion	Resp	Lower	Upper
113	8674		
111	101.5	81.8	122.6
192	22.4	18.8	28.2

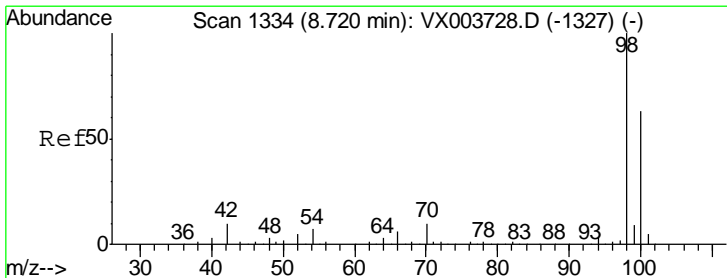
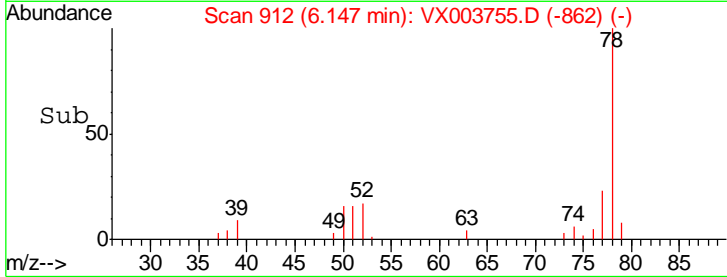
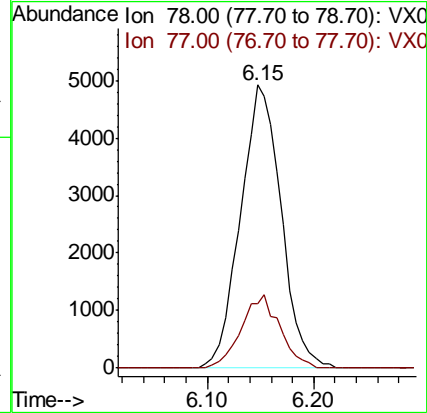
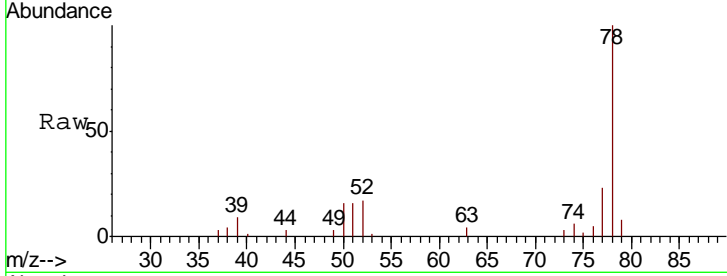




#40
Benzene
Concen: 17.73 ug/l
RT: 6.15 min Scan# 912
Delta R.T. 0.01 min
Lab File: VX003755.D
Acq: 31 Jul 2018 17:25

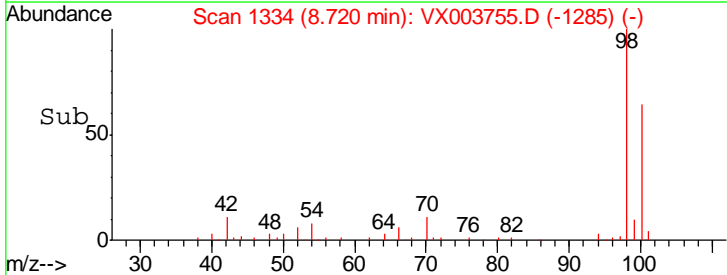
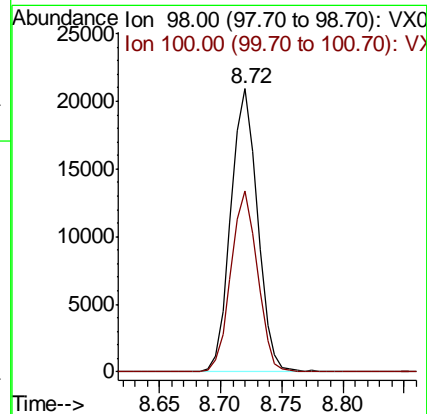
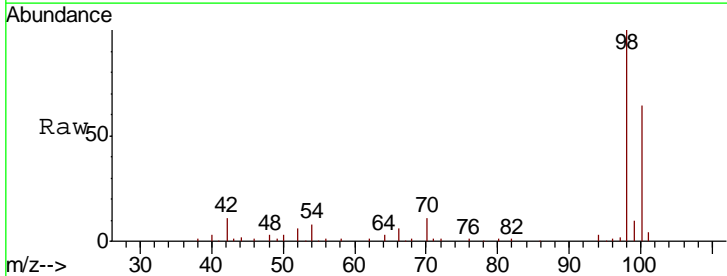
Instrument :
MSVOA_X
ClientSampleId :
GW-03(8-10)

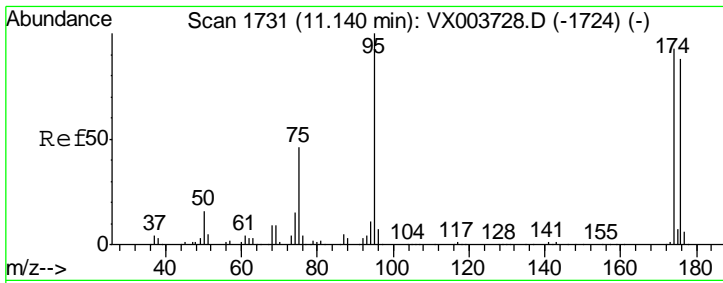
Tot Ion: 78 Resp: 13159
Ion Ratio Lower Upper
78 100
77 22.6 17.9 26.9



#50
Toluene-d8
Concen: 46.72 ug/l
RT: 8.72 min Scan# 1334
Delta R.T. 0.00 min
Lab File: VX003755.D
Acq: 31 Jul 2018 17:25

Tgt Ion: 98 Resp: 31721
Ion Ratio Lower Upper
98 100
100 63.2 51.4 77.0

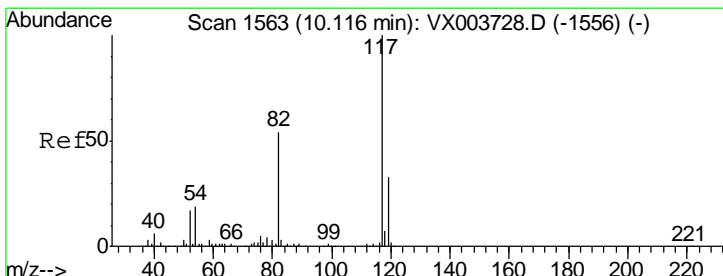
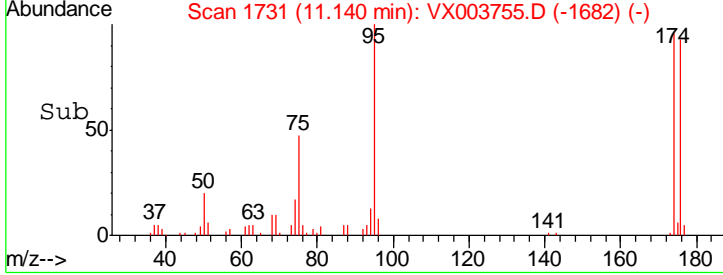
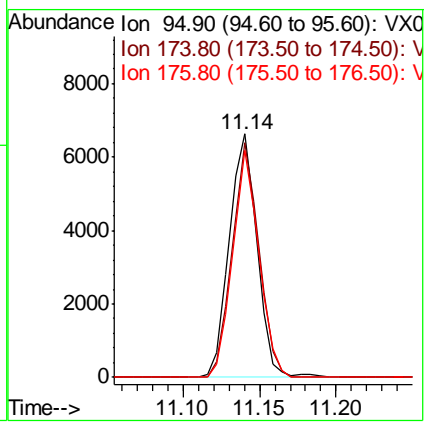
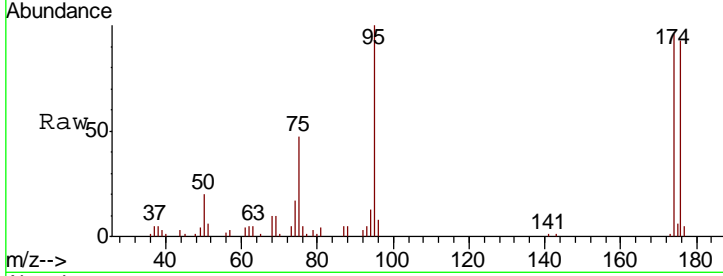




#62
 4-Bromofluorobenzene
 Concen: 33.27 ug/l
 RT: 11.14 min Scan# 1731
 Delta R.T. 0.00 min
 Lab File: VX003755.D
 Acq: 31 Jul 2018 17:25

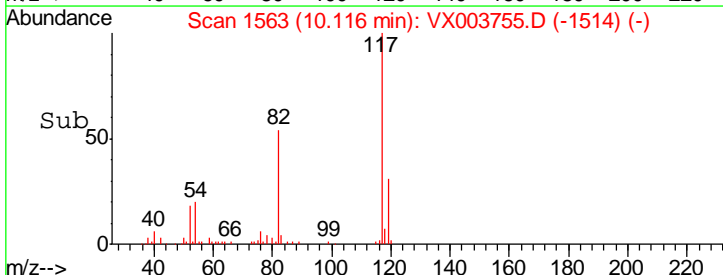
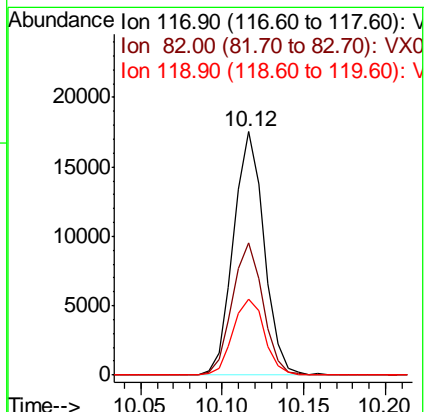
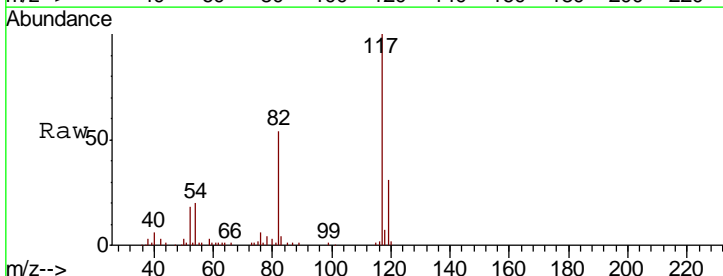
Instrument : MSVOA_X
 ClientSampled : GW-03(8-10)

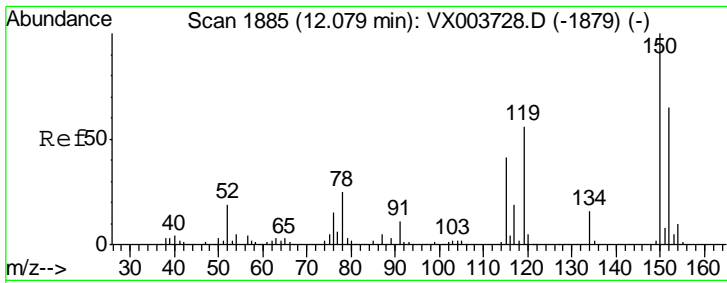
Tgt Ion	Resp	Lower	Upper
95	100		
174	92.5	0.0	186.2
176	88.5	0.0	179.2



#63
 Chlorobenzene-d5
 Concen: 50.00 ug/l
 RT: 10.12 min Scan# 1563
 Delta R.T. 0.00 min
 Lab File: VX003755.D
 Acq: 31 Jul 2018 17:25

Tgt Ion	Resp	Lower	Upper
117	100		
82	54.1	43.2	64.8
119	31.2	26.3	39.5

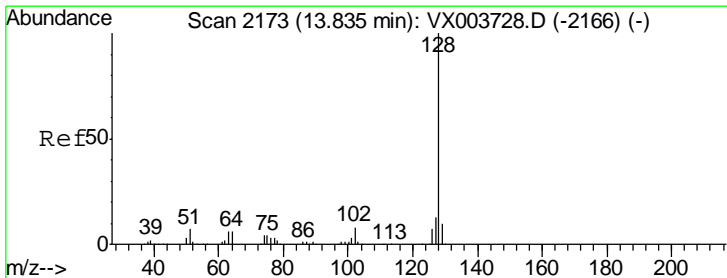
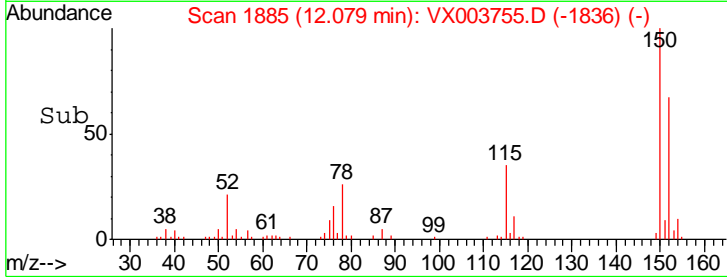
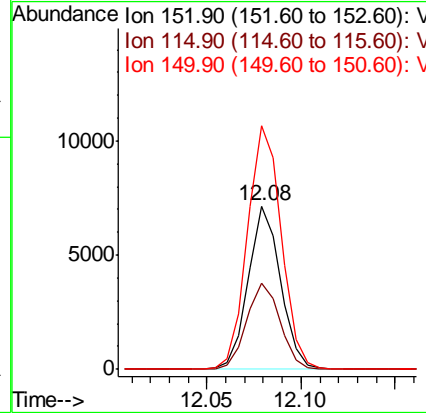
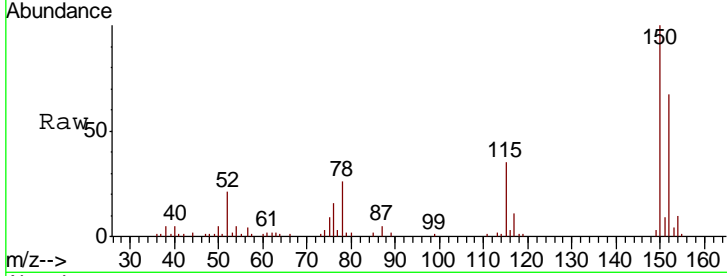




#72
 1,4-Dichlorobenzene-d4
 Concen: 50.00 ug/l
 RT: 12.08 min Scan# 1885
 Delta R.T. 0.00 min
 Lab File: VX003755.D
 Acq: 31 Jul 2018 17:25

Instrument :
 MSVOA_X
 ClientSampled :
 GW-03(8-10)

Tgt Ion	Resp	Lower	Upper
152	100		
115	54.5	38.5	115.3
150	155.9	0.0	346.2



#95
 Naphthalene
 Concen: 2.63 ug/l
 RT: 13.84 min Scan# 2174
 Delta R.T. 0.01 min
 Lab File: VX003755.D
 Acq: 31 Jul 2018 17:25

Tgt Ion	Resp	Lower	Upper
128	100		
127	14.2	10.2	15.2
129	8.7	8.7	13.1

