

Data Path : Z:\VOASRV\HPCHEM1\MSVOA X\DATA\VX073119\
 Data File : VX011253.D
 Acq On : 31 Jul 2019 19:13
 Operator : JC/SP
 Sample : K4048-06
 Misc : 5.0mL/MSVOA X/WATER
 ALS Vial : 13 Sample Multiplier: 1

Instrument :
 MSVOA_X
 ClientSampled :
 OWL-C2-GW

Quant Time: Aug 01 02:33:22 2019
 Quant Method : Z:\VOASRV\HPCHEM1\MSVOA_X\METHOD\82X071619W.M
 Quant Title : SW846 8260
 QLast Update : Wed Jul 24 05:39:23 2019
 Response via : Initial Calibration

| Internal Standards | R.T. | QIon | Response | Conc | Units | Dev(Min) |
|----------------------------|-------|------|----------|-------|-------|----------|
| 1) Pentafluorobenzene | 5.67 | 168 | 233620 | 50.00 | ug/l | 0.00 |
| 34) 1,4-Difluorobenzene | 6.86 | 114 | 336029 | 50.00 | ug/l | 0.00 |
| 63) Chlorobenzene-d5 | 10.11 | 117 | 298446 | 50.00 | ug/l | 0.00 |
| 72) 1,4-Dichlorobenzene-d4 | 12.08 | 152 | 137974 | 50.00 | ug/l | 0.00 |

System Monitoring Compounds

| | | | | | | |
|---------------------------|--------|-----|----------|-------|--------|------|
| 33) 1,2-Dichloroethane-d4 | 6.06 | 65 | 118730 | 47.77 | ug/l | 0.00 |
| Spiked Amount | 50.000 | | Recovery | = | 95.54% | |
| 35) Dibromofluoromethane | 5.50 | 113 | 99269 | 46.54 | ug/l | 0.00 |
| Spiked Amount | 50.000 | | Recovery | = | 93.08% | |
| 50) Toluene-d8 | 8.71 | 98 | 391488 | 48.94 | ug/l | 0.00 |
| Spiked Amount | 50.000 | | Recovery | = | 97.88% | |
| 62) 4-Bromofluorobenzene | 11.13 | 95 | 130188 | 44.28 | ug/l | 0.00 |
| Spiked Amount | 50.000 | | Recovery | = | 88.56% | |

Target Compounds

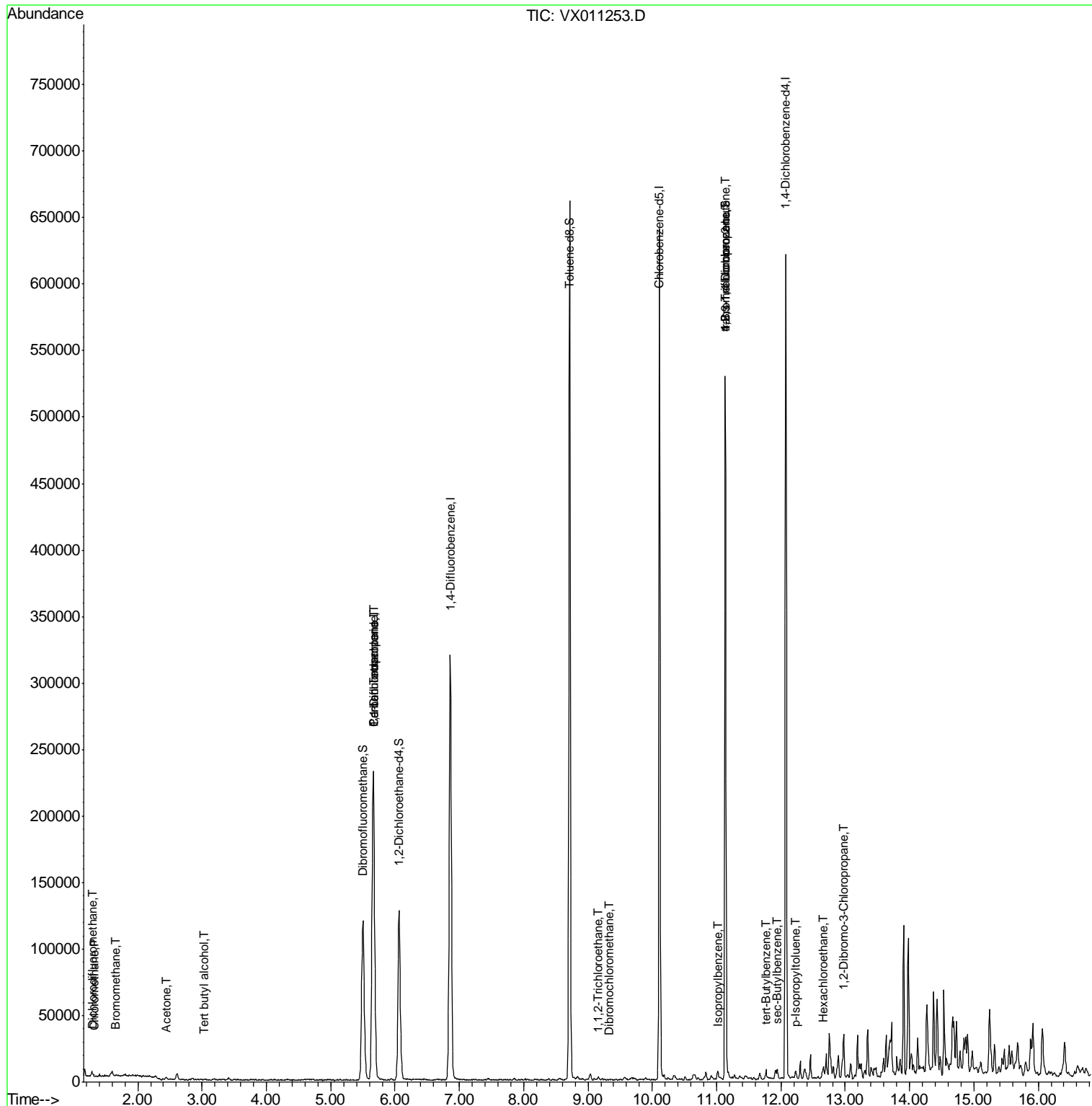
| | | | | | | Qvalue |
|--------------------------------|-------|-----|-------|--------|--------|--------|
| 2) Dichlorodifluoromethane | 1.30 | 85 | 20 | 0.554 | ug/l # | 43 |
| 3) Chloromethane | 1.32 | 50 | 521 | 0.243 | ug/l # | 45 |
| 5) Bromomethane | 1.66 | 94 | 676 | 0.547 | ug/l # | 50 |
| 11) Tert butyl alcohol | 3.04 | 59 | 718 | 1.240 | ug/l # | 66 |
| 16) Acetone | 2.44 | 43 | 1826 | 1.627 | ug/l # | 74 |
| 36) 1,1-Dichloropropene | 5.66 | 75 | 15380 | 5.572 | ug/l # | 49 |
| 38) Carbon Tetrachloride | 5.67 | 117 | 21773 | 7.570 | ug/l # | 18 |
| 55) 1,1,2-Trichloroethane | 9.16 | 97 | 792 | 0.346 | ug/l # | 15 |
| 60) Dibromochloromethane | 9.33 | 129 | 44 | 2.544 | ug/l # | 11 |
| 73) Isopropylbenzene | 11.02 | 105 | 3036 | 0.326 | ug/l | 90 |
| 76) 1,2,3-Trichloropropane | 11.13 | 75 | 65275 | 26.217 | ug/l # | 35 |
| 81) trans-1,4-Dichloro-2-buten | 11.13 | 75 | 65275 | 65.115 | ug/l # | 11 |
| 83) tert-Butylbenzene | 11.77 | 119 | 2544 | 0.332 | ug/l | 84 |
| 85) sec-Butylbenzene | 11.94 | 105 | 3453 | 0.385 | ug/l | 86 |
| 86) p-Isopropyltoluene | 12.23 | 119 | 2213 | 0.267 | ug/l | 82 |
| 90) Hexachloroethane | 12.66 | 117 | 497 | 0.380 | ug/l # | 6 |
| 92) 1,2-Dibromo-3-Chloropropan | 12.97 | 75 | 133 | 0.209 | ug/l # | 1 |

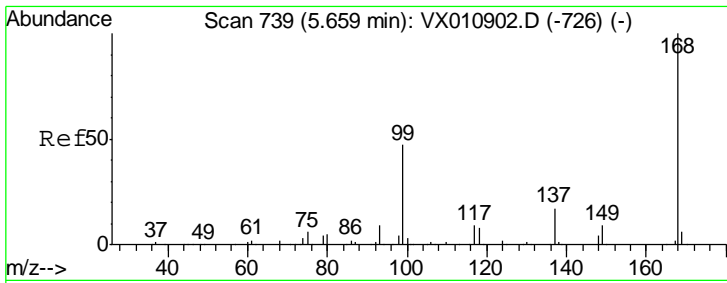
(#) = qualifier out of range (m) = manual integration (+) = signals summed

Data Path : Z:\VOASRV\HPCHEM1\MSVOA X\DATA\VX073119\
 Data File : VX011253.D
 Acq On : 31 Jul 2019 19:13
 Operator : JC/SP
 Sample : K4048-06
 Misc : 5.0mL/MSVOA X/WATER
 ALS Vial : 13 Sample Multiplier: 1

Instrument :
 MSVOA_X
 ClientSampled :
 OWL-C2-GW

Quant Time: Aug 01 02:33:22 2019
 Quant Method : Z:\VOASRV\HPCHEM1\MSVOA_X\METHOD\82X071619W.M
 Quant Title : SW846 8260
 QLast Update : Wed Jul 24 05:39:23 2019
 Response via : Initial Calibration

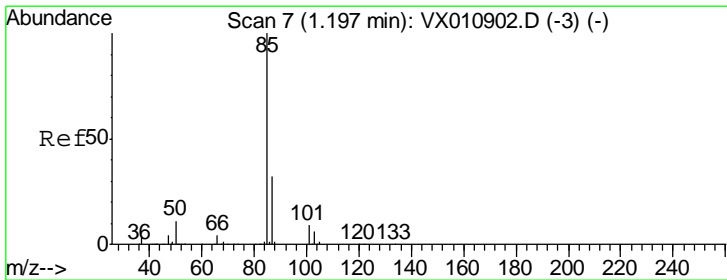
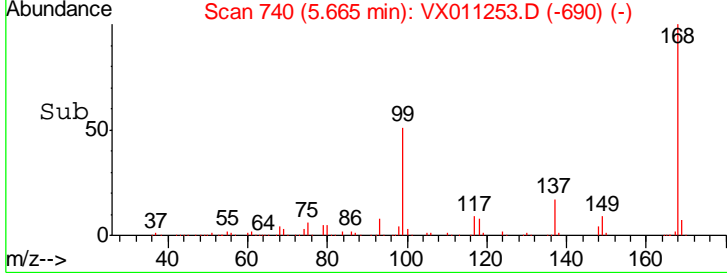
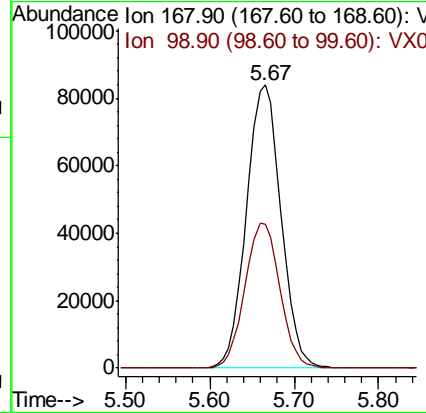
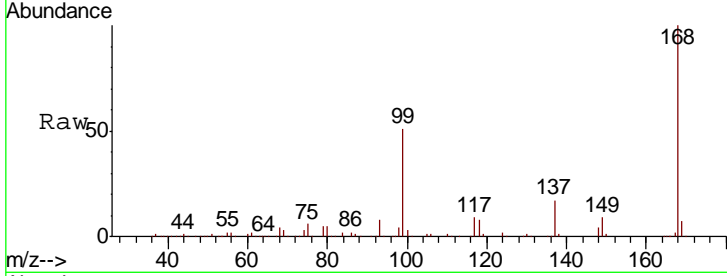




#1
 Pentafluorobenzene
 Concen: 50.000 ug/l
 RT: 5.67 min Scan# 740
 Delta R.T. 0.01 min
 Lab File: VX011253.D
 Acq: 31 Jul 2019 19:13

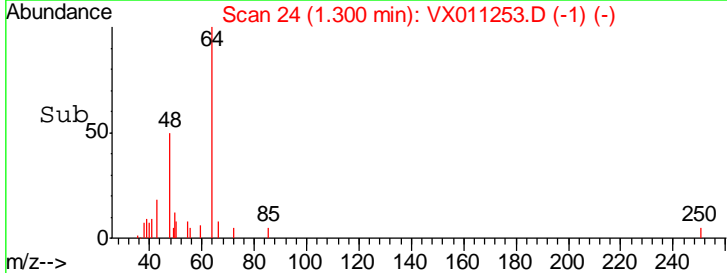
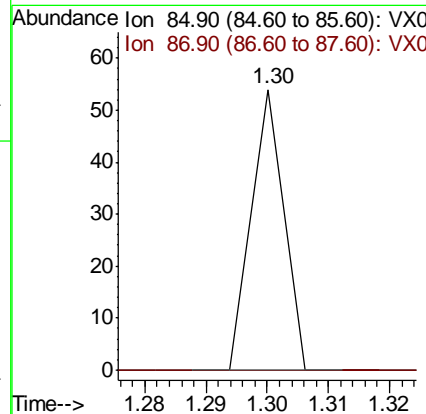
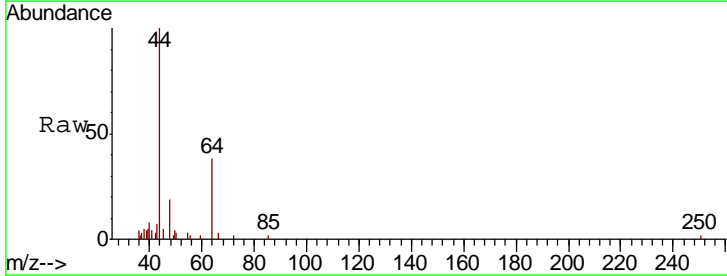
Instrument : MSVOA_X
 ClientSampled : OWL-C2-GW

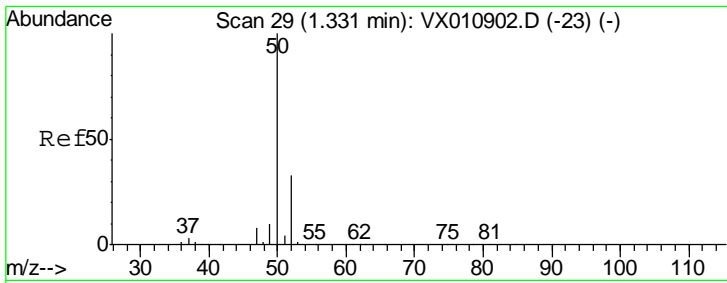
Tgt Ion: 168 Resp: 233620
 Ion Ratio Lower Upper
 168 100
 99 51.0 37.6 56.4



#2
 Dichlorodifluoromethane
 Concen: 0.554 ug/l
 RT: 1.30 min Scan# 24
 Delta R.T. 0.10 min
 Lab File: VX011253.D
 Acq: 31 Jul 2019 19:13

Tgt Ion: 85 Resp: 20
 Ion Ratio Lower Upper
 85 100
 87 0.0 15.9 47.7#

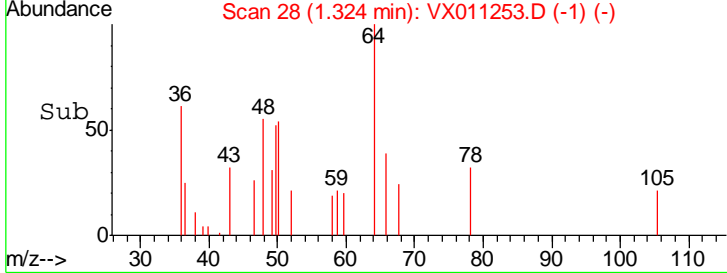
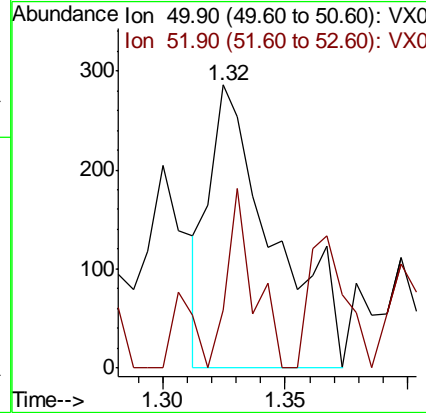
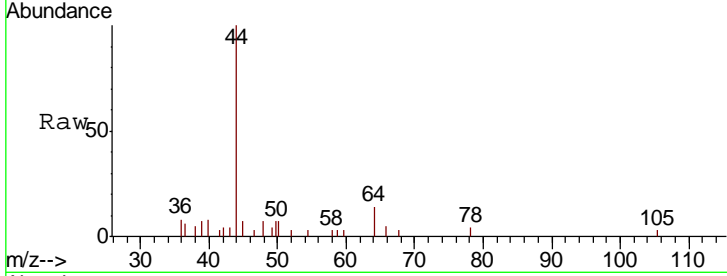




#3
 Chloromethane
 Concen: 0.243 ug/l
 RT: 1.32 min Scan# 28
 Delta R.T. -0.01 min
 Lab File: VX011253.D
 Acq: 31 Jul 2019 19:13

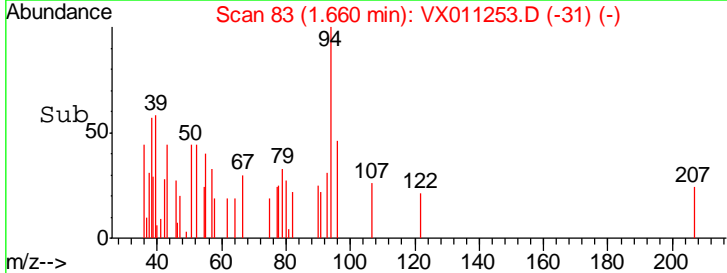
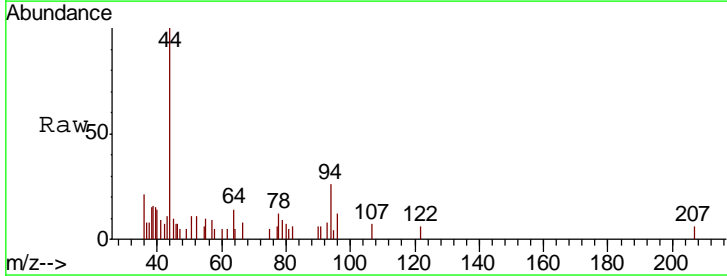
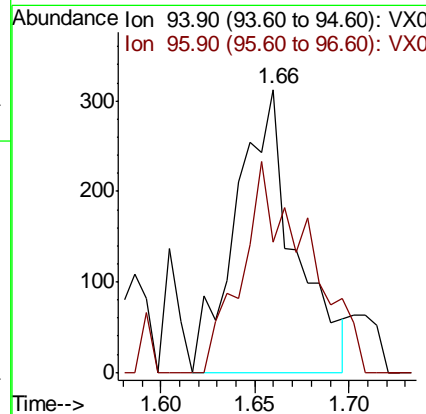
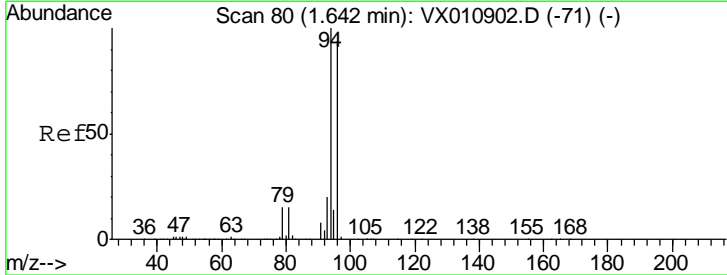
Instrument :
 MSVOA_X
ClientSampled :
 OWL-C2-GW

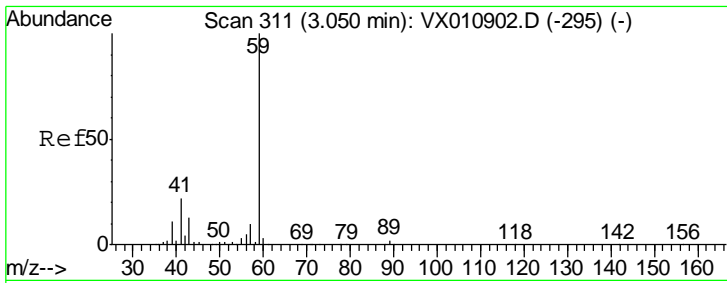
| Tgt Ion | Resp | Lower | Upper |
|---------|------|-------|-------|
| 50 | 100 | | |
| 52 | 1.7 | 26.4 | 39.6# |



#5
 Bromomethane
 Concen: 0.547 ug/l
 RT: 1.66 min Scan# 83
 Delta R.T. 0.02 min
 Lab File: VX011253.D
 Acq: 31 Jul 2019 19:13

| Tgt Ion | Resp | Lower | Upper |
|---------|------|-------|--------|
| 94 | 100 | | |
| 96 | 46.0 | 75.6 | 113.4# |

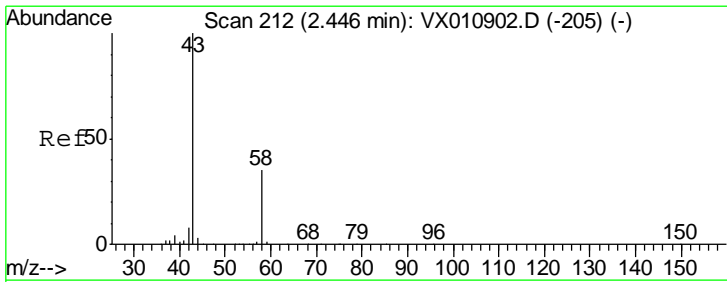
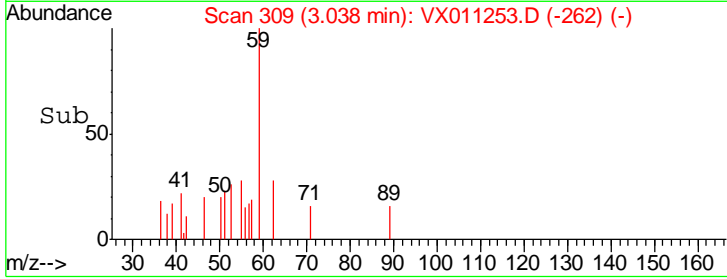
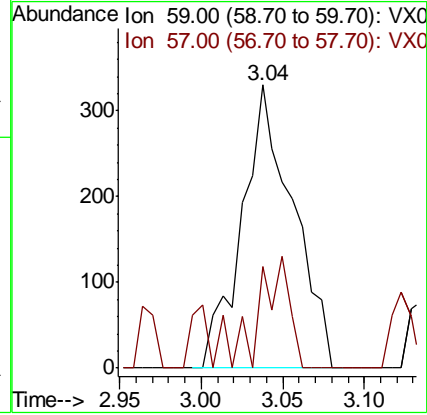
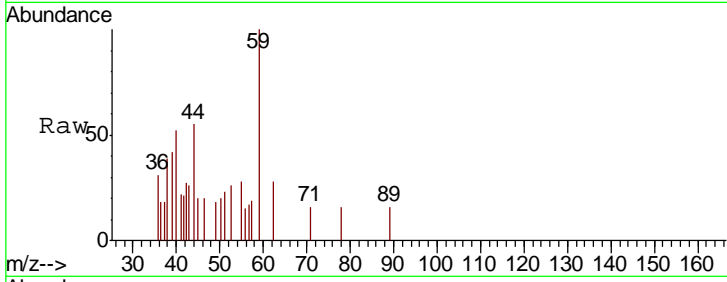




#11
 Tert butyl alcohol
 Concen: 1.240 ug/l
 RT: 3.04 min Scan# 309
 Delta R.T. -0.01 min
 Lab File: VX011253.D
 Acq: 31 Jul 2019 19:13

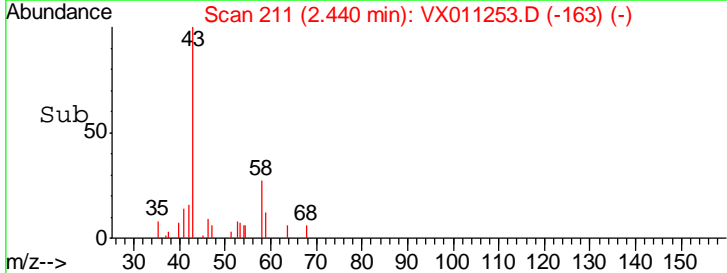
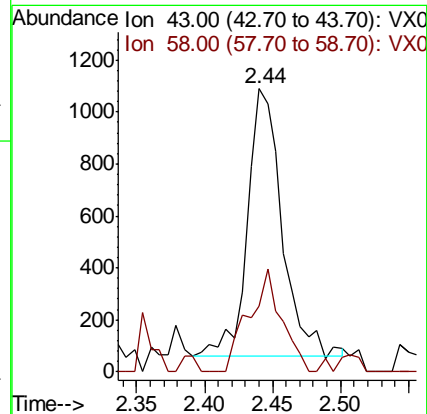
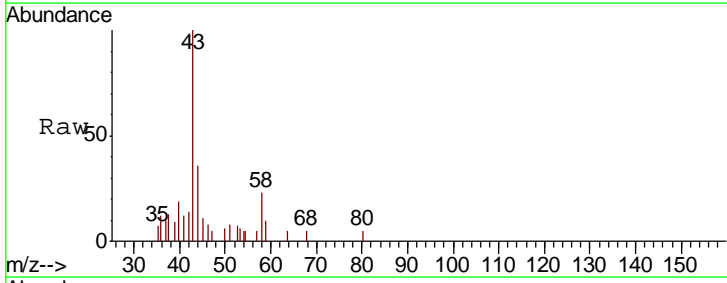
Instrument :
 MSVOA_X
 ClientSampled :
 OWL-C2-GW

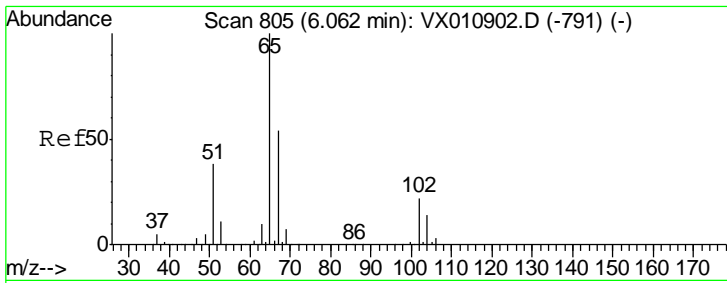
Tgt Ion: 59 Resp: 718
 Ion Ratio Lower Upper
 59 100
 57 22.3 7.9 11.9#



#16
 Acetone
 Concen: 1.627 ug/l
 RT: 2.44 min Scan# 211
 Delta R.T. -0.01 min
 Lab File: VX011253.D
 Acq: 31 Jul 2019 19:13

Tgt Ion: 43 Resp: 1826
 Ion Ratio Lower Upper
 43 100
 58 19.4 27.7 41.5#

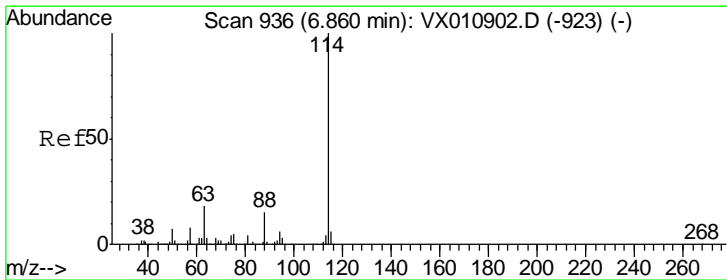
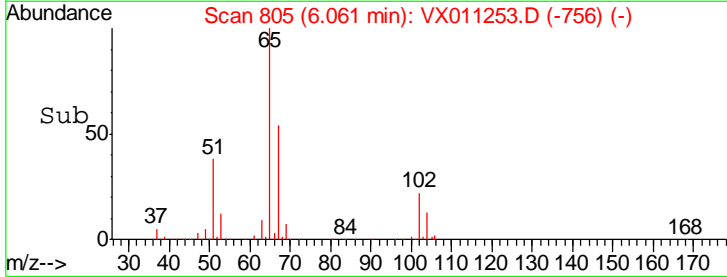
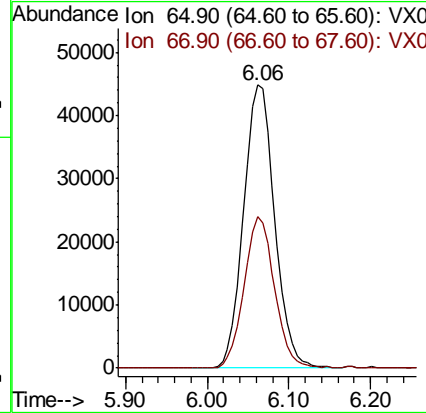
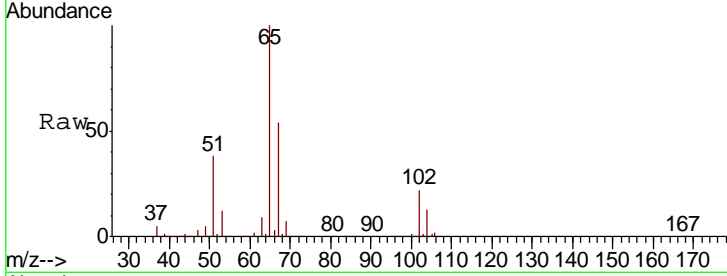




#33
 1,2-Dichloroethane-d4
 Concen: 47.772 ug/l
 RT: 6.06 min Scan# 805
 Delta R.T. -0.00 min
 Lab File: VX011253.D
 Acq: 31 Jul 2019 19:13

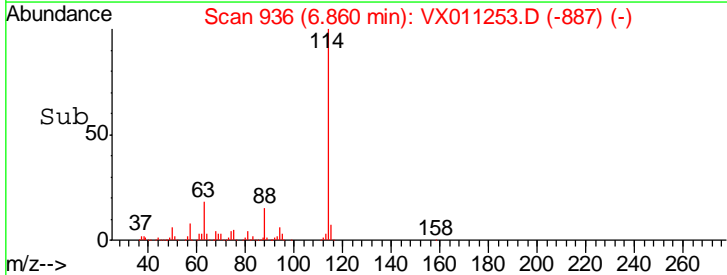
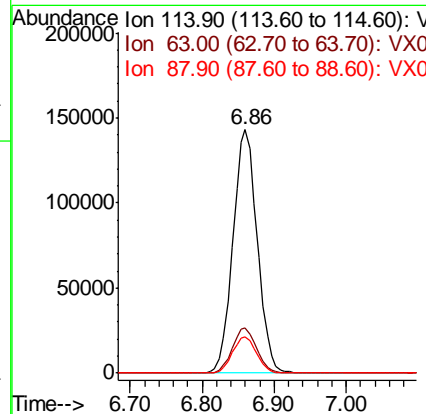
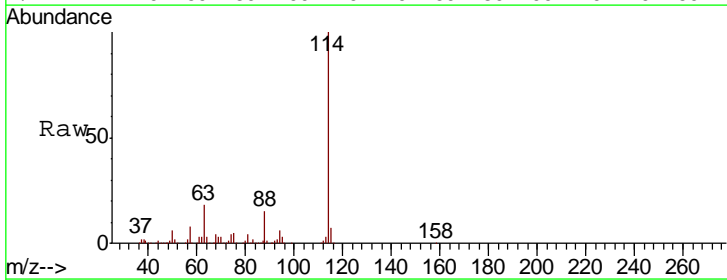
Instrument :
 MSVOA_X
 ClientSampled :
 OWL-C2-GW

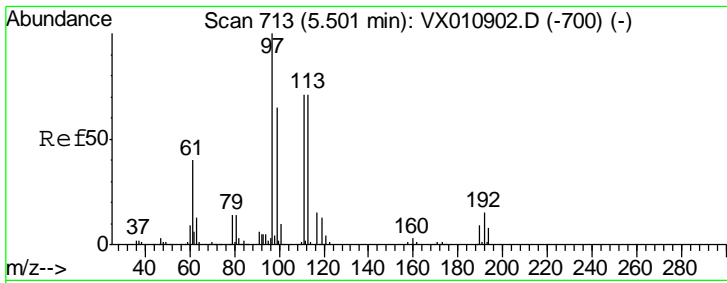
| Tgt Ion | Resp | Lower | Upper |
|---------|--------|-------|-------|
| 65 | 118730 | | |
| 67 | 52.3 | 0.0 | 107.8 |



#34
 1,4-Difluorobenzene
 Concen: 50.000 ug/l
 RT: 6.86 min Scan# 936
 Delta R.T. -0.00 min
 Lab File: VX011253.D
 Acq: 31 Jul 2019 19:13

| Tgt Ion | Resp | Lower | Upper |
|---------|--------|-------|-------|
| 114 | 336029 | | |
| 63 | 18.3 | 0.0 | 35.6 |
| 88 | 15.0 | 0.0 | 29.8 |

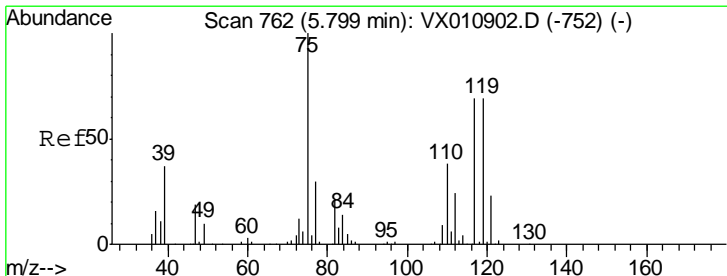
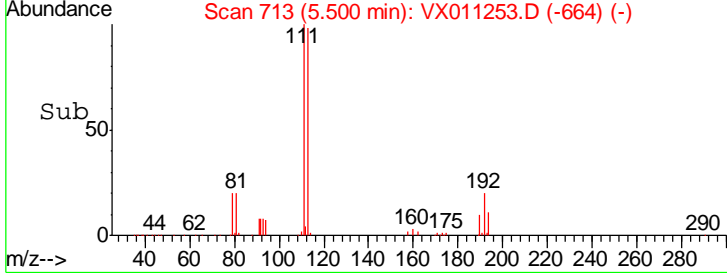
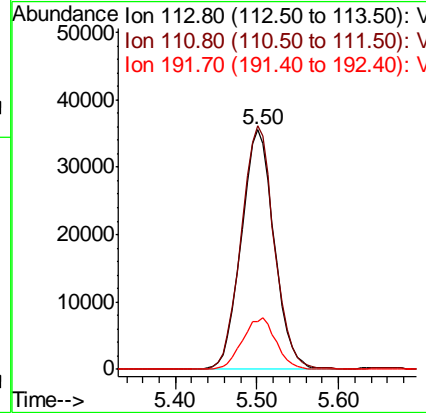
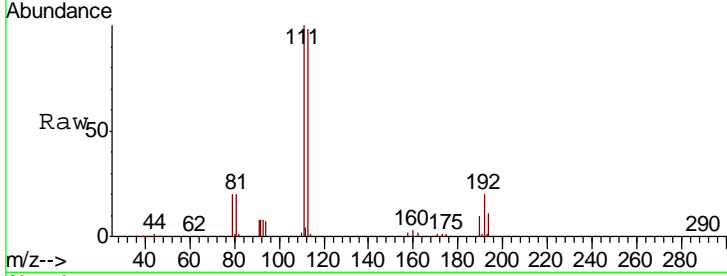




#35
 Dibromofluoromethane
 Concen: 46.543 ug/l
 RT: 5.50 min Scan# 713
 Delta R.T. -0.00 min
 Lab File: VX011253.D
 Acq: 31 Jul 2019 19:13

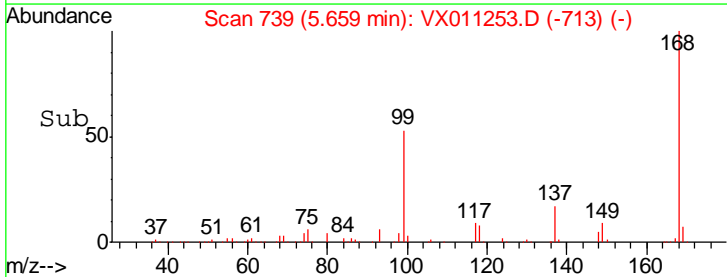
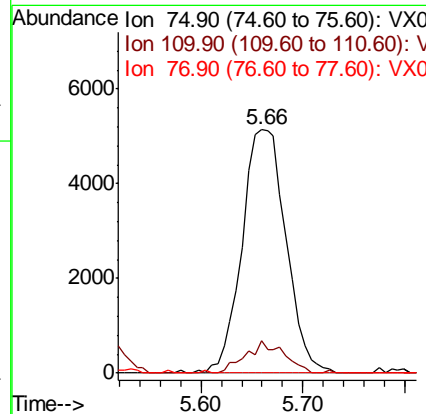
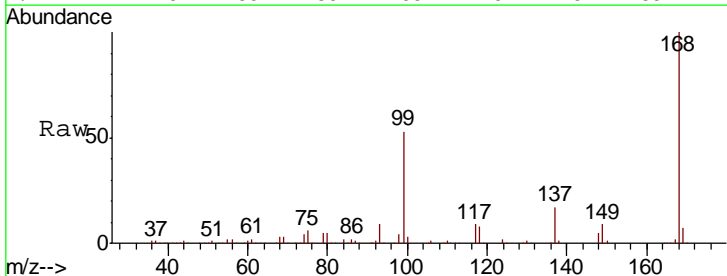
Instrument :
 MSVOA_X
 ClientSampled :
 OWL-C2-GW

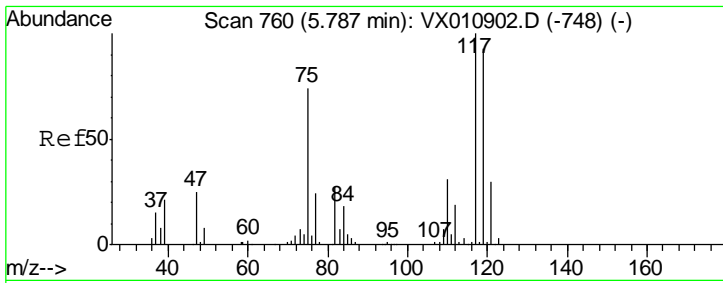
| Tgt Ion | Resp | Lower | Upper |
|---------|-------|-------|-------|
| 113 | 99269 | | |
| 113 | 100 | | |
| 111 | 102.3 | 82.3 | 123.5 |
| 192 | 22.1 | 17.4 | 26.2 |



#36
 1,1-Dichloropropene
 Concen: 5.572 ug/l
 RT: 5.66 min Scan# 739
 Delta R.T. -0.14 min
 Lab File: VX011253.D
 Acq: 31 Jul 2019 19:13

| Tgt Ion | Resp | Lower | Upper |
|---------|-------|-------|-------|
| 75 | 15380 | | |
| 75 | 100 | | |
| 110 | 11.5 | 19.9 | 59.7# |
| 77 | 0.0 | 25.0 | 37.4# |

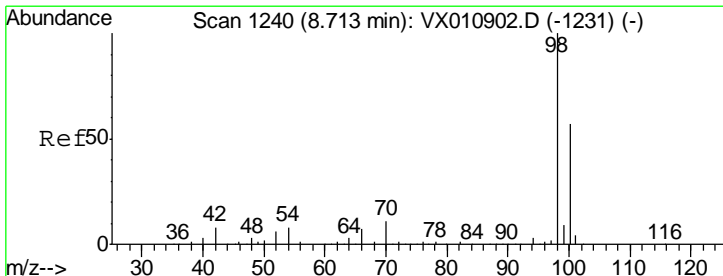
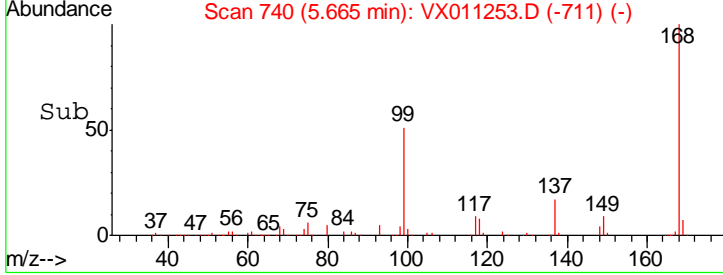
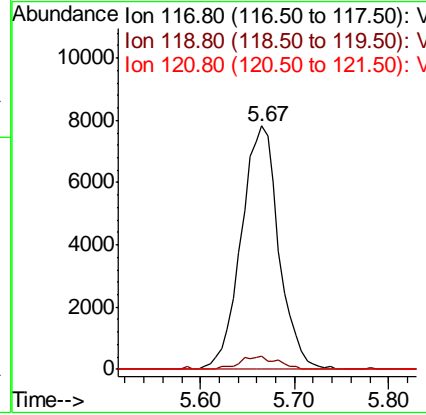
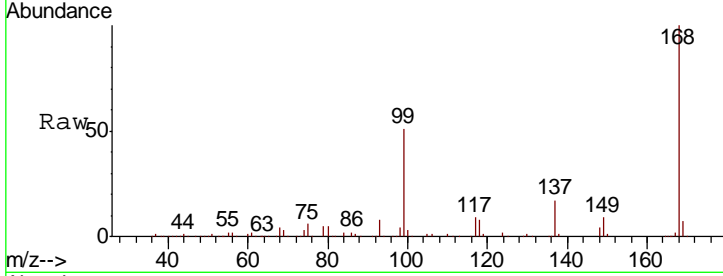




#38
 Carbon Tetrachloride
 Concen: 7.570 ug/l
 RT: 5.67 min Scan# 740
 Delta R.T. -0.12 min
 Lab File: VX011253.D
 Acq: 31 Jul 2019 19:13

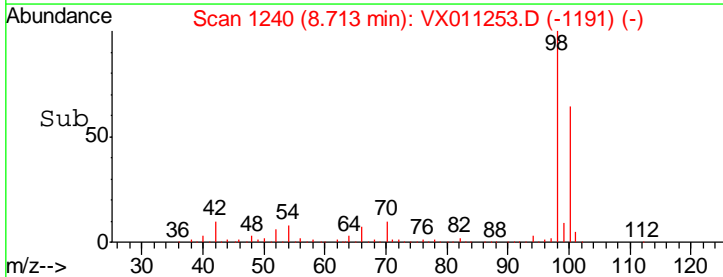
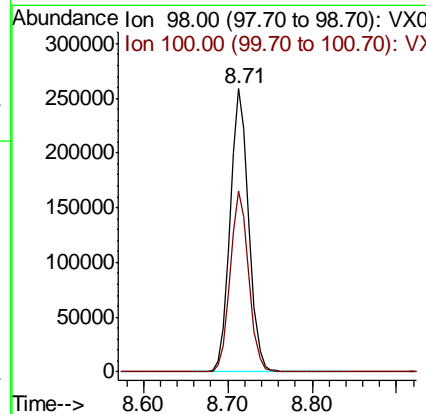
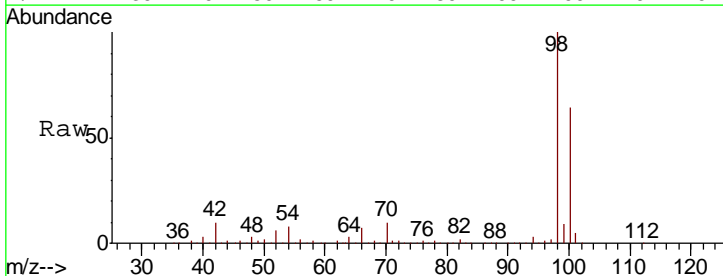
Instrument :
 MSVOA_X
 ClientSampled :
 OWL-C2-GW

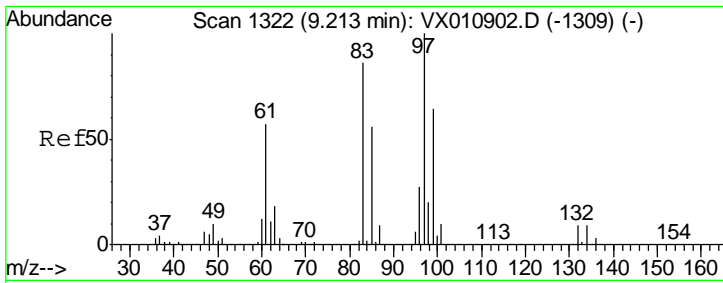
| Tgt Ion | Resp | Lower | Upper |
|---------|-------|-------|--------|
| 117 | 21773 | | |
| 117 | 100 | | |
| 119 | 5.5 | 74.2 | 111.2# |
| 121 | 0.0 | 24.2 | 36.2# |



#50
 Toluene-d8
 Concen: 48.939 ug/l
 RT: 8.71 min Scan# 1240
 Delta R.T. -0.00 min
 Lab File: VX011253.D
 Acq: 31 Jul 2019 19:13

| Tgt Ion | Resp | Lower | Upper |
|---------|--------|-------|-------|
| 98 | 391488 | | |
| 98 | 100 | | |
| 100 | 63.7 | 50.6 | 75.8 |

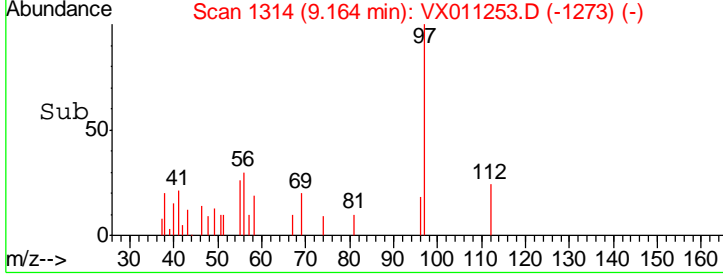
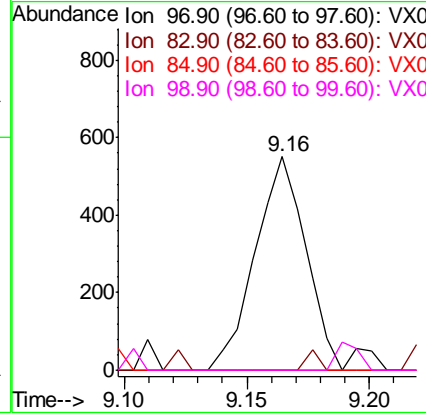
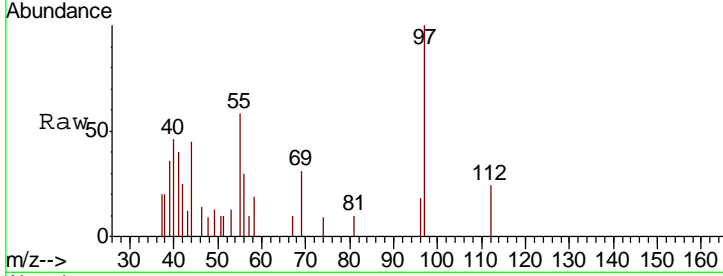




#55
 1,1,2-Trichloroethane
 Concen: 0.346 ug/l
 RT: 9.16 min Scan# 1314
 Delta R.T. -0.05 min
 Lab File: VX011253.D
 Acq: 31 Jul 2019 19:13

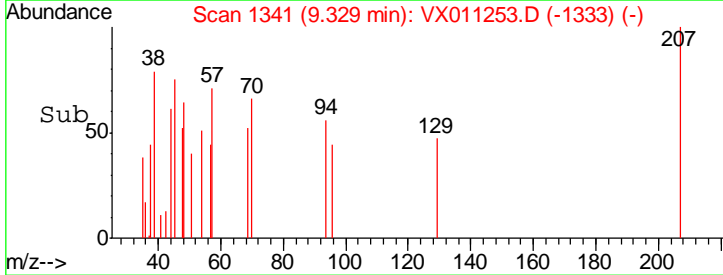
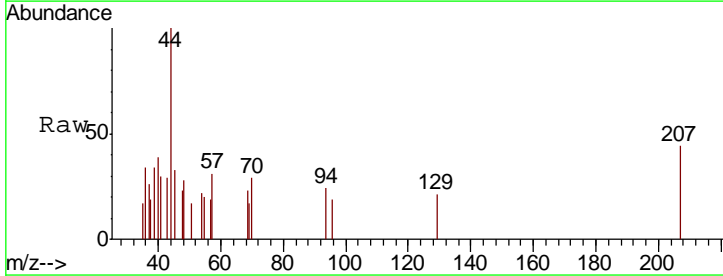
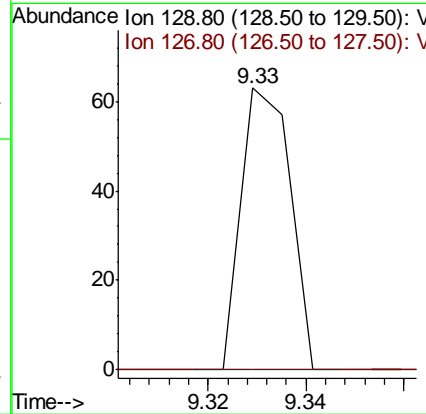
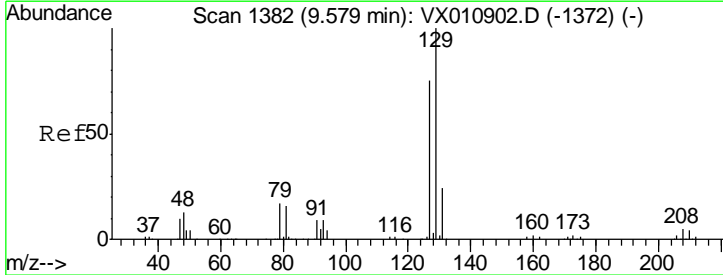
Instrument :
 MSVOA_X
ClientSampled :
 OWL-C2-GW

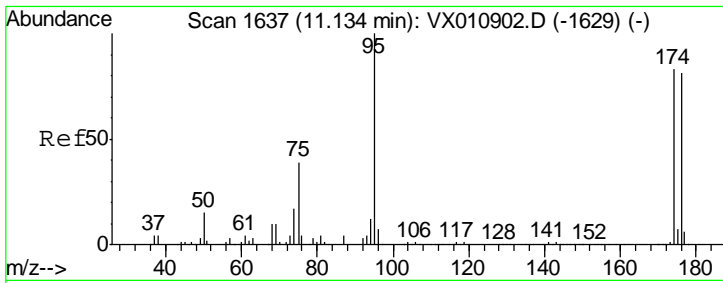
| Tgt Ion | Resp | Lower | Upper |
|---------|------|-------|--------|
| 97 | 100 | | |
| 83 | 0.0 | 69.2 | 103.8# |
| 85 | 0.0 | 44.6 | 66.8# |
| 99 | 0.0 | 51.2 | 76.8# |



#60
 Dibromochloromethane
 Concen: 2.544 ug/l
 RT: 9.33 min Scan# 1341
 Delta R.T. -0.25 min
 Lab File: VX011253.D
 Acq: 31 Jul 2019 19:13

| Tgt Ion | Resp | Lower | Upper |
|---------|------|-------|--------|
| 129 | 100 | | |
| 127 | 0.0 | 38.6 | 115.8# |

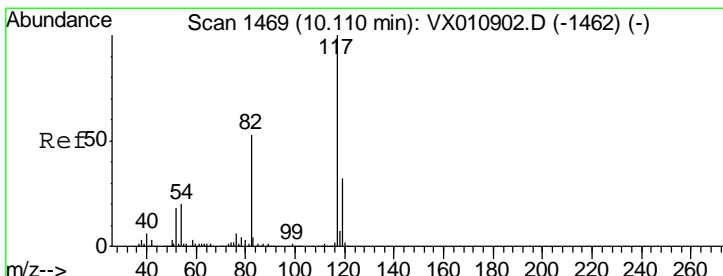
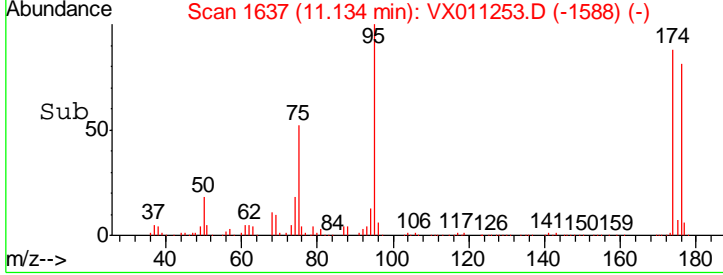
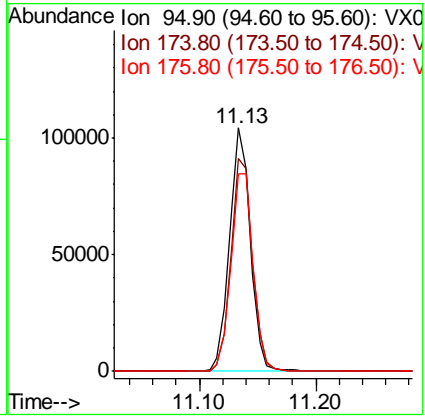
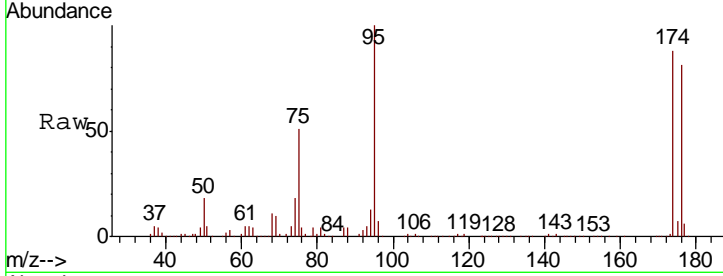




#62
 4-Bromofluorobenzene
 Concen: 44.276 ug/l
 RT: 11.13 min Scan# 1637
 Delta R.T. -0.00 min
 Lab File: VX011253.D
 Acq: 31 Jul 2019 19:13

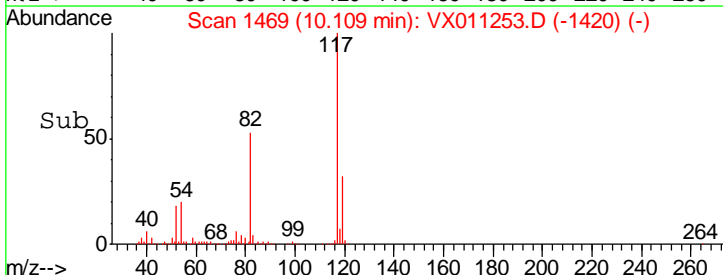
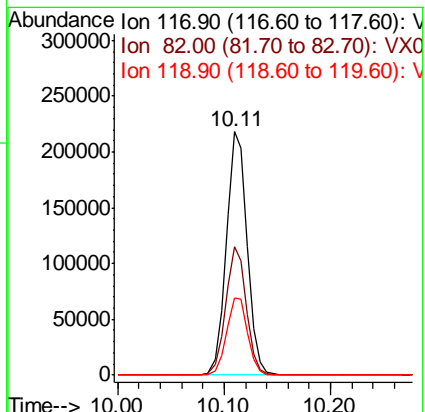
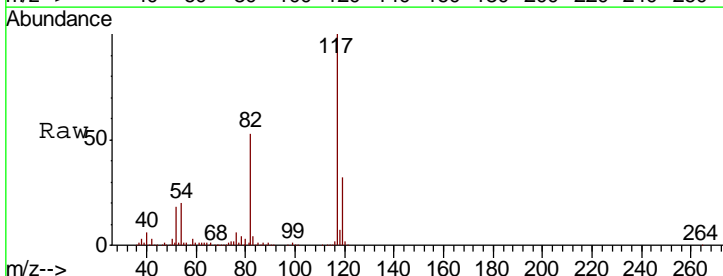
Instrument : MSVOA_X
 ClientSampled : OWL-C2-GW

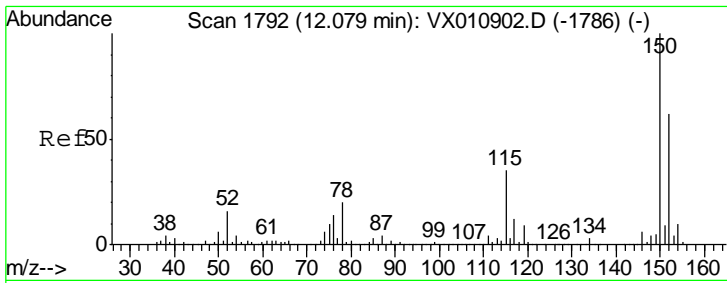
| Tgt Ion | Resp | Lower | Upper |
|---------|--------|-------|-------|
| 95 | 130188 | | |
| 174 | 90.5 | 0.0 | 180.6 |
| 176 | 86.9 | 0.0 | 173.8 |



#63
 Chlorobenzene-d5
 Concen: 50.000 ug/l
 RT: 10.11 min Scan# 1469
 Delta R.T. -0.00 min
 Lab File: VX011253.D
 Acq: 31 Jul 2019 19:13

| Tgt Ion | Resp | Lower | Upper |
|---------|--------|-------|-------|
| 117 | 298446 | | |
| 82 | 52.9 | 42.6 | 63.8 |
| 119 | 31.8 | 25.9 | 38.9 |

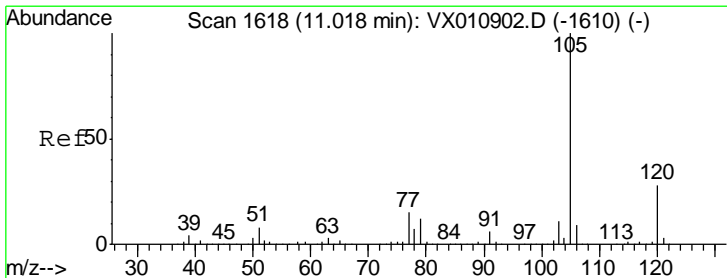
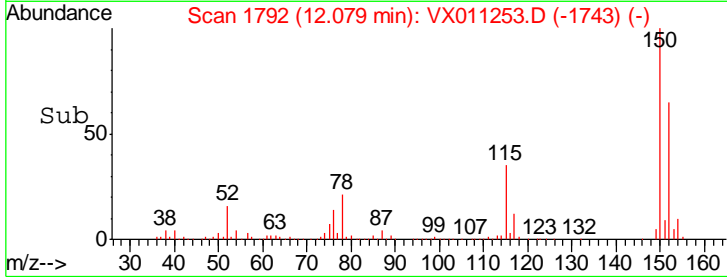
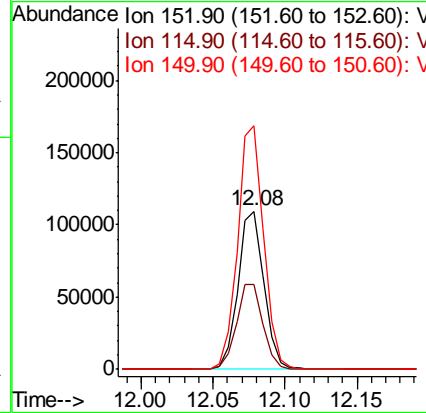
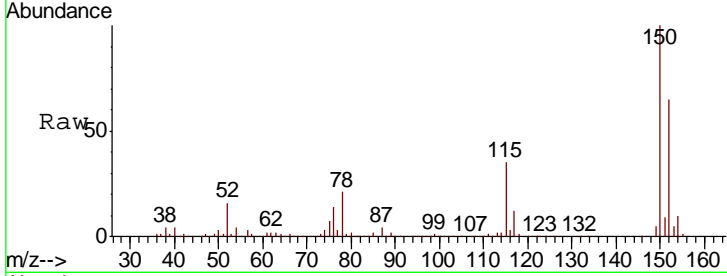




#72
 1,4-Dichlorobenzene-d4
 Concen: 50.000 ug/l
 RT: 12.08 min Scan# 1792
 Delta R.T. -0.00 min
 Lab File: VX011253.D
 Acq: 31 Jul 2019 19:13

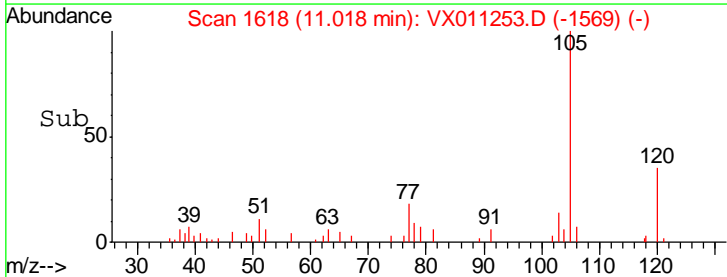
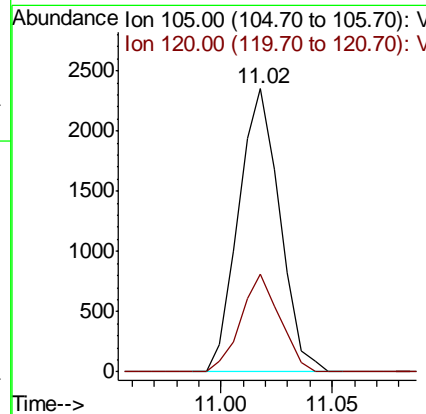
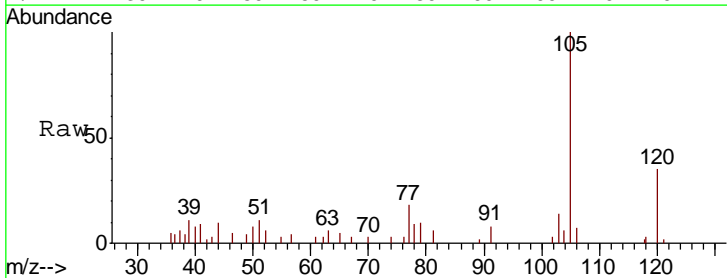
Instrument :
 MSVOA_X
 ClientSampled :
 OWL-C2-GW

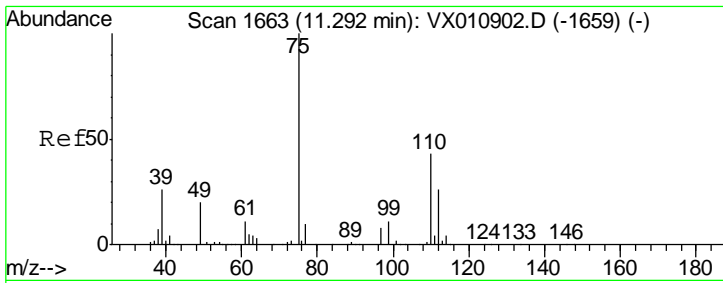
| Tgt Ion | Resp | Lower | Upper |
|---------|-------|-------|-------|
| 152 | 100 | | |
| 115 | 55.4 | 39.7 | 119.1 |
| 150 | 154.8 | 0.0 | 345.6 |



#73
 Isopropylbenzene
 Concen: 0.326 ug/l
 RT: 11.02 min Scan# 1618
 Delta R.T. -0.00 min
 Lab File: VX011253.D
 Acq: 31 Jul 2019 19:13

| Tgt Ion | Resp | Lower | Upper |
|---------|------|-------|-------|
| 105 | 100 | | |
| 120 | 32.6 | 13.7 | 41.1 |

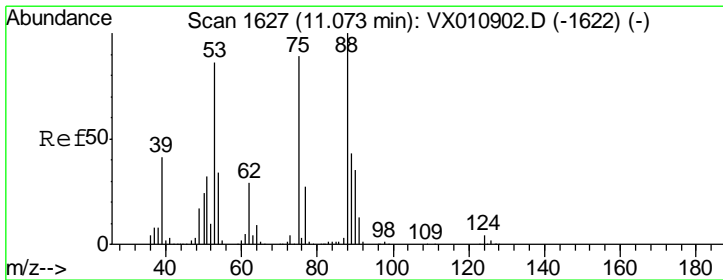
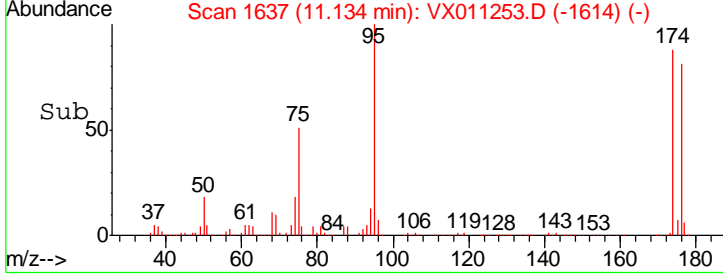
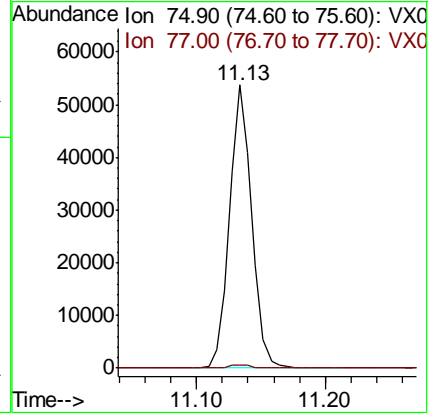
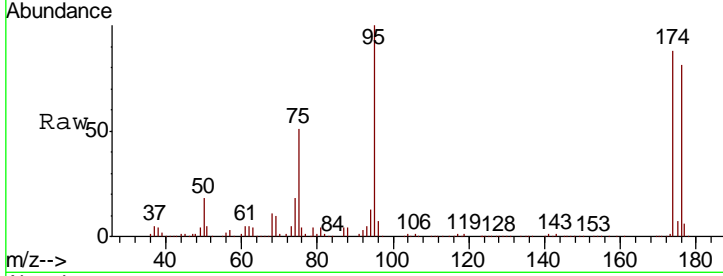




#76
 1,2,3-Trichloropropane
 Concen: 26.217 ug/l
 RT: 11.13 min Scan# 1637
 Delta R.T. -0.16 min
 Lab File: VX011253.D
 Acq: 31 Jul 2019 19:13

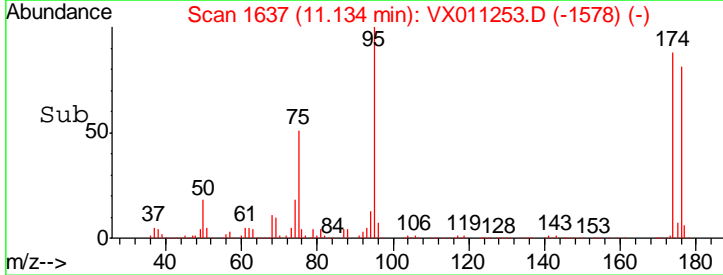
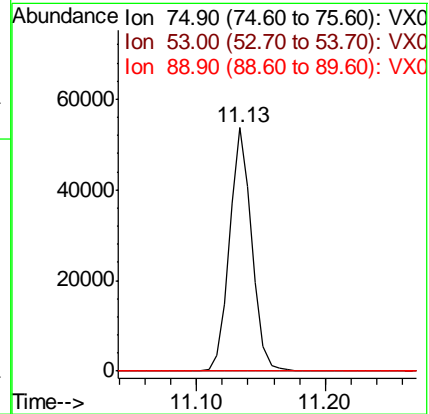
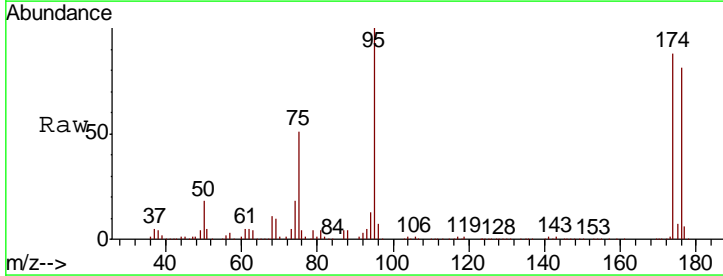
Instrument : MSVOA_X
 ClientSampleId : OWL-C2-GW

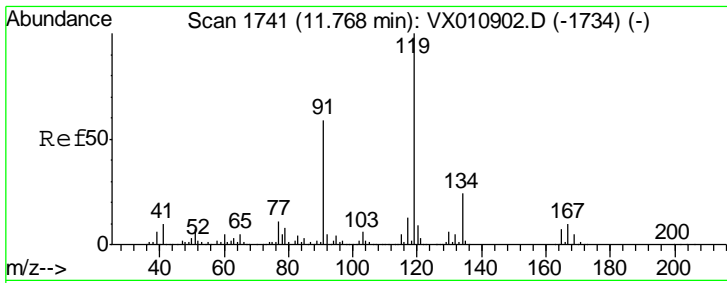
Tgt Ion: 75 Resp: 65275
 Ion Ratio Lower Upper
 75 100
 77 1.3 21.3 64.0#



#81
 trans-1,4-Dichloro-2-butene
 Concen: 65.115 ug/l
 RT: 11.13 min Scan# 1637
 Delta R.T. 0.06 min
 Lab File: VX011253.D
 Acq: 31 Jul 2019 19:13

Tgt Ion: 75 Resp: 65275
 Ion Ratio Lower Upper
 75 100
 53 0.0 76.7 115.1#
 89 0.0 38.5 57.7#

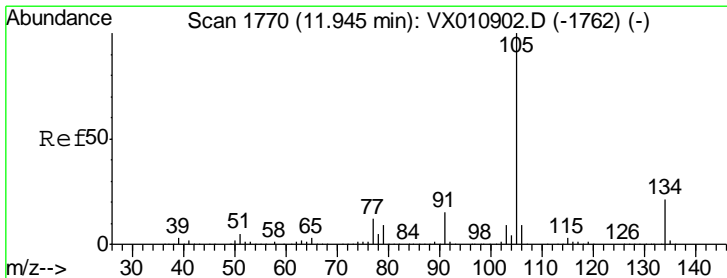
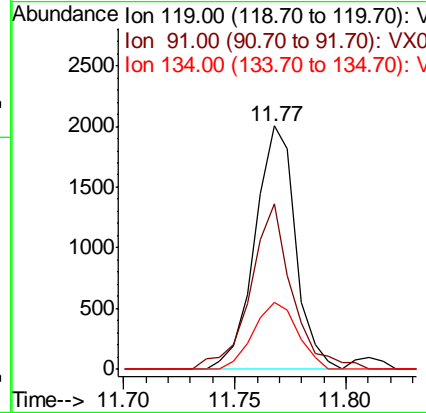
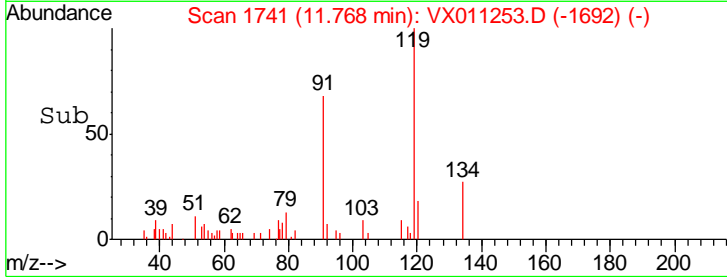
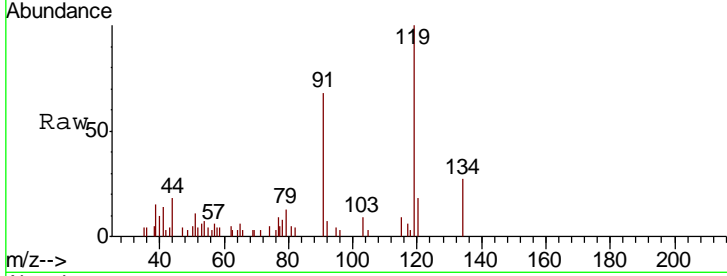




#83
 tert-Butylbenzene
 Concen: 0.332 ug/l
 RT: 11.77 min Scan# 1741
 Delta R.T. -0.00 min
 Lab File: VX011253.D
 Acq: 31 Jul 2019 19:13

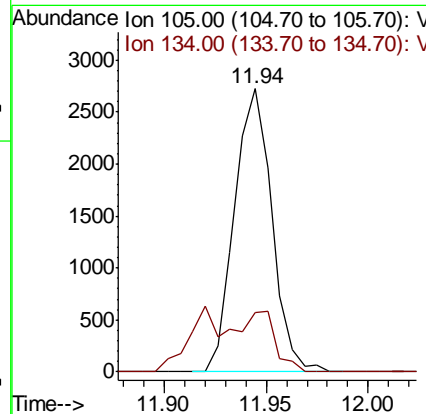
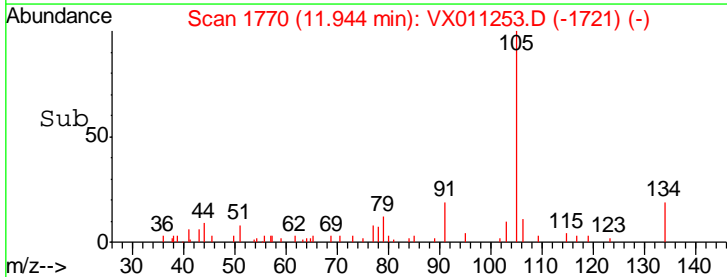
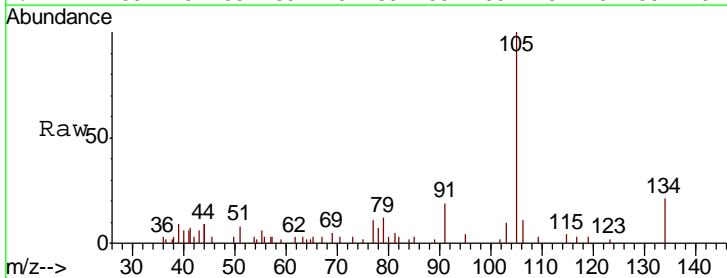
Instrument :
 MSVOA_X
 ClientSampled :
 OWL-C2-GW

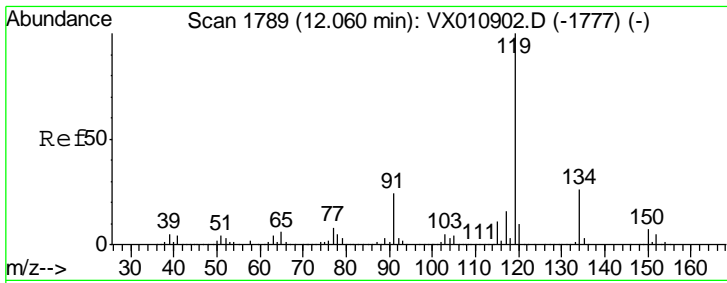
| Tgt Ion | Resp | Lower | Upper |
|---------|------|-------|-------|
| 119 | 100 | | |
| 91 | 69.7 | 28.6 | 85.8 |
| 134 | 30.0 | 11.6 | 34.8 |



#85
 sec-Butylbenzene
 Concen: 0.385 ug/l
 RT: 11.94 min Scan# 1770
 Delta R.T. -0.00 min
 Lab File: VX011253.D
 Acq: 31 Jul 2019 19:13

| Tgt Ion | Resp | Lower | Upper |
|---------|------|-------|-------|
| 105 | 100 | | |
| 134 | 14.6 | 10.4 | 31.4 |

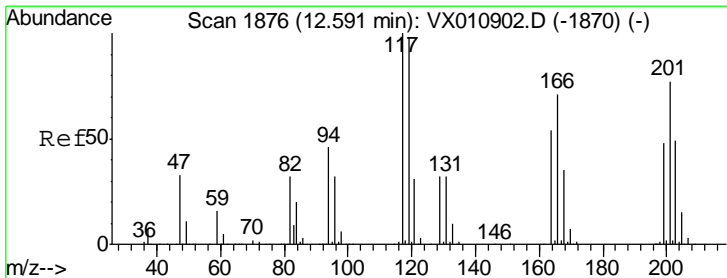
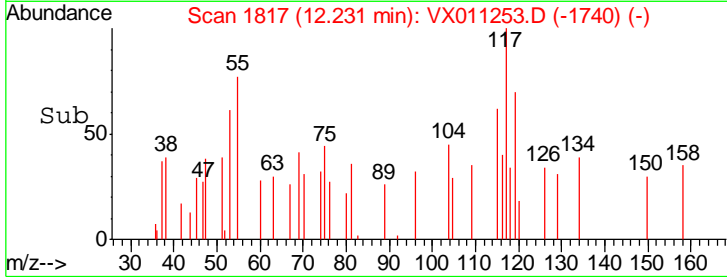
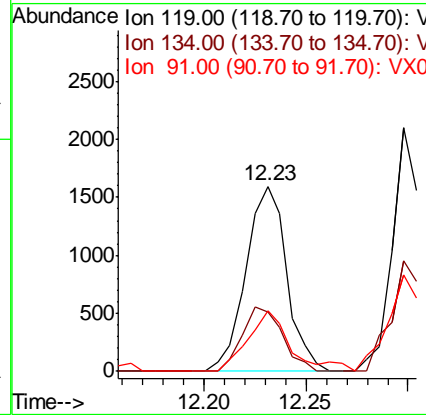
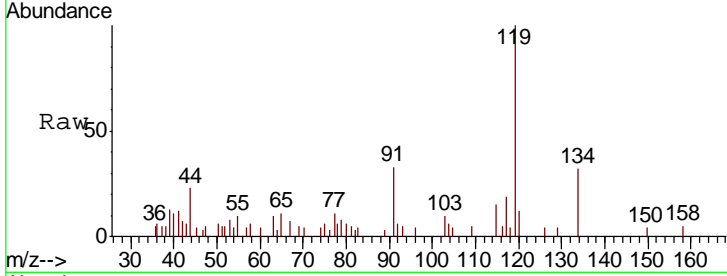




#86
 p-Isopropyltoluene
 Concen: 0.267 ug/l
 RT: 12.23 min Scan# 1817
 Delta R.T. 0.17 min
 Lab File: VX011253.D
 Acq: 31 Jul 2019 19:13

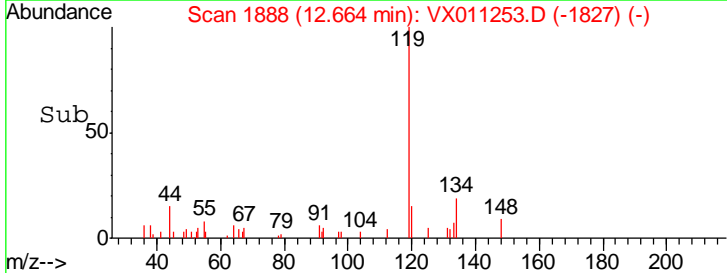
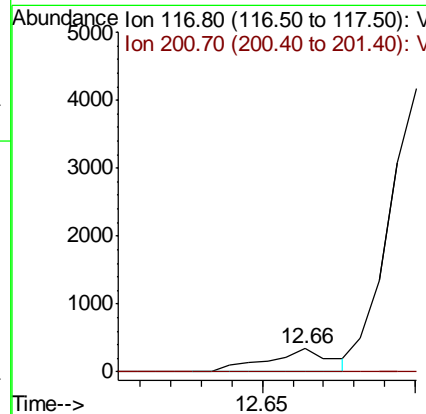
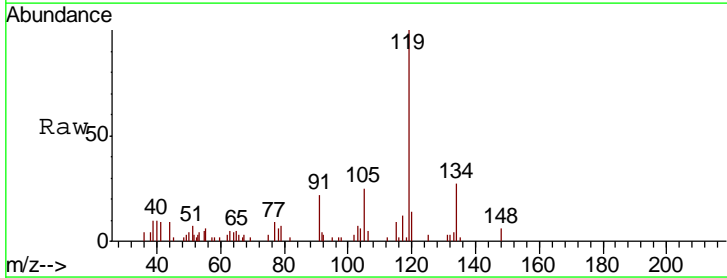
Instrument :
 MSVOA_X
 ClientSampled :
 OWL-C2-GW

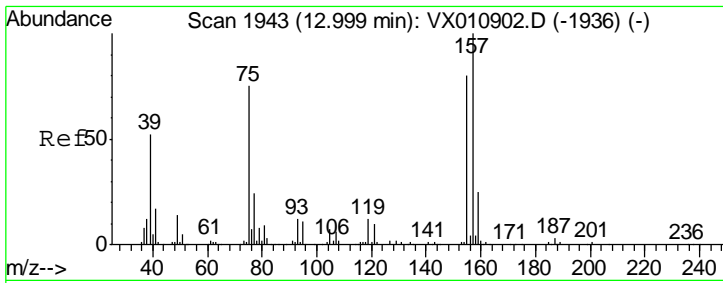
| Tgt Ion | Resp | Lower | Upper |
|---------|------|-------|-------|
| 119 | 2213 | | |
| 134 | 34.0 | 13.4 | 40.1 |
| 91 | 34.3 | 11.8 | 35.4 |



#90
 Hexachloroethane
 Concen: 0.380 ug/l
 RT: 12.66 min Scan# 1888
 Delta R.T. 0.07 min
 Lab File: VX011253.D
 Acq: 31 Jul 2019 19:13

| Tgt Ion | Resp | Lower | Upper |
|---------|------|-------|--------|
| 117 | 497 | | |
| 201 | 0.0 | 43.3 | 129.8# |

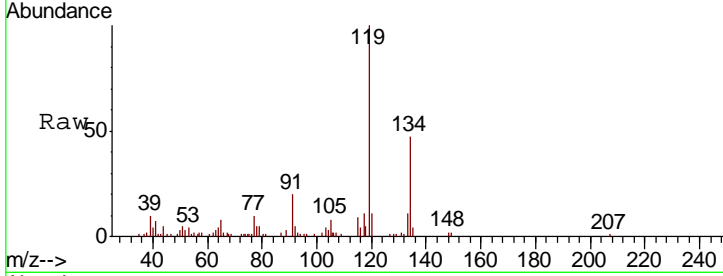




#92
 1,2-Dibromo-3-Chloropropane
 Concen: 0.209 ug/l
 RT: 12.97 min Scan# 1938
 Delta R.T. -0.03 min
 Lab File: VX011253.D
 Acq: 31 Jul 2019 19:13

Instrument : MSVOA_X
 ClientSampleId : OWL-C2-GW

| Tot Ion | 75 | Resp | 133 |
|---------|-------|-------|--------|
| Ion | Ratio | Lower | Upper |
| 75 | 100 | | |
| 155 | 0.0 | 48.7 | 146.1# |
| 157 | 0.0 | 62.5 | 187.6# |



Abundance Ion 74.90 (74.60 to 75.60): VX0
 Ion 154.80 (154.50 to 155.50): V
 Ion 156.80 (156.50 to 157.50): V

