

Data Path : Z:\voasrv\HPCHEM1\MSVOA\_X\Data\VX073125\  
 Data File : VX047192.D  
 Acq On : 31 Jul 2025 10:40  
 Operator : JC/MD  
 Sample : VX0731WBL01  
 Misc : 5.0mL/MSVOA\_X/WATER  
 ALS Vial : 4 Sample Multiplier: 1

Instrument :  
 MSVOA\_X  
 ClientSampleId :  
 VX0731WBL01

Quant Time: Aug 01 01:46:27 2025  
 Quant Method : Z:\voasrv\HPCHEM1\MSVOA\_X\Method\82X072125W.M  
 Quant Title : SW846 8260  
 QLast Update : Tue Jul 22 03:59:51 2025  
 Response via : Initial Calibration

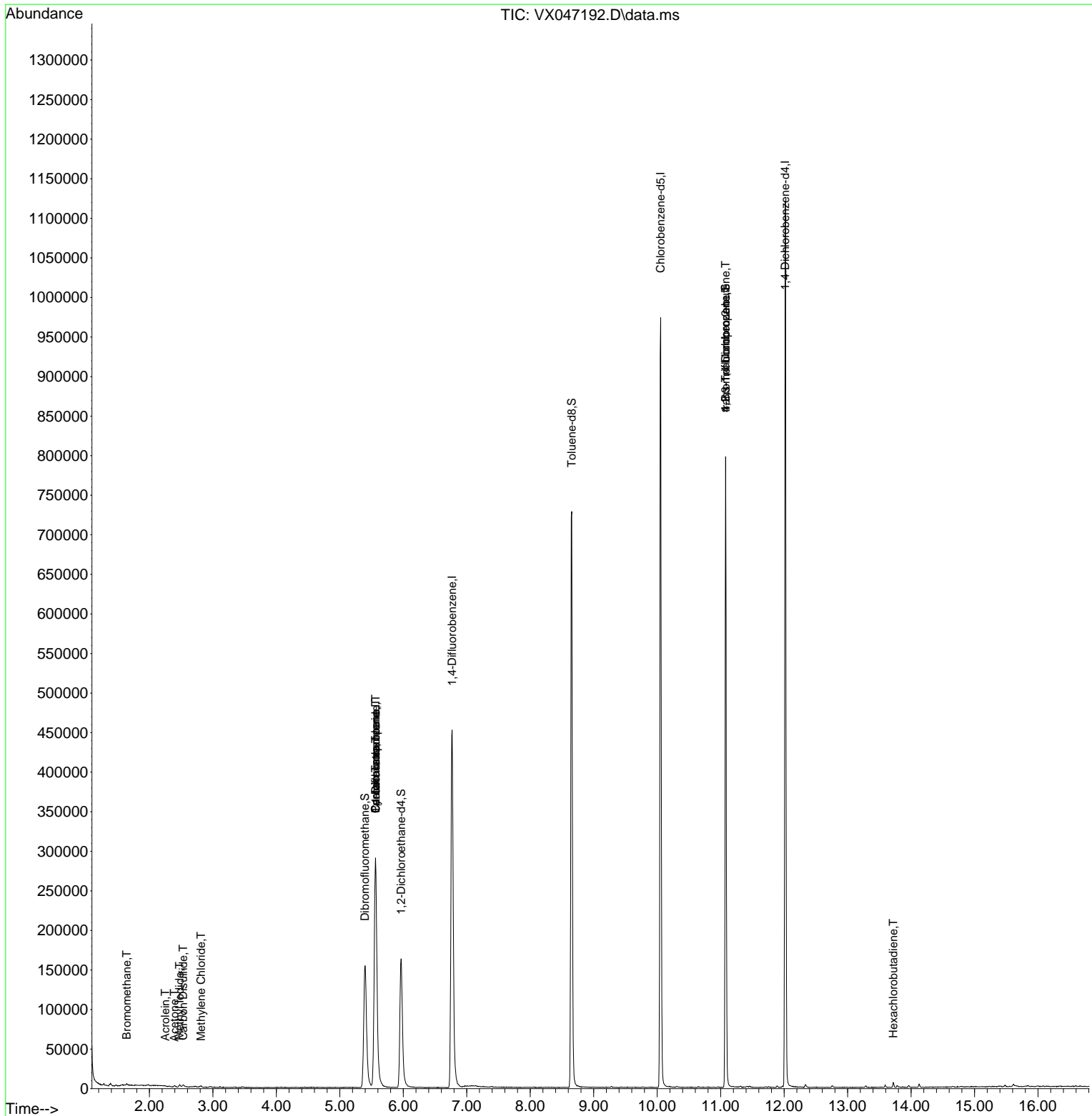
Compound	R.T.	QIon	Response	Conc	Units	Dev(Min)
-----						
Internal Standards						
1) Pentafluorobenzene	5.562	168	288817	50.000	ug/l	0.00
34) 1,4-Difluorobenzene	6.769	114	487802	50.000	ug/l	0.00
63) Chlorobenzene-d5	10.055	117	442920	50.000	ug/l	0.00
72) 1,4-Dichlorobenzene-d4	12.018	152	223368	50.000	ug/l	0.00
System Monitoring Compounds						
33) 1,2-Dichloroethane-d4	5.964	65	175327	48.732	ug/l	0.00
Spiked Amount	50.000	Range 78 - 117	Recovery	=	97.460%	
35) Dibromofluoromethane	5.397	113	148774	49.396	ug/l	0.00
Spiked Amount	50.000	Range 75 - 124	Recovery	=	98.800%	
50) Toluene-d8	8.653	98	457141	46.868	ug/l	0.00
Spiked Amount	50.000	Range 92 - 112	Recovery	=	93.740%	
62) 4-Bromofluorobenzene	11.079	95	212901	50.650	ug/l	0.00
Spiked Amount	50.000	Range 83 - 123	Recovery	=	101.300%	
Target Compounds						
						Qvalue
5) Bromomethane	1.642	94	1227	0.554	ug/l #	76
10) Methyl Iodide	2.477	142	3941	1.055	ug/l #	91
11) Tert butyl alcohol	2.965	59	80	Below Cal	#	72
13) Acrolein	2.252	56	196	0.253	ug/l	93
16) Acetone	2.392	43	2205	1.530	ug/l #	45
17) Carbon Disulfide	2.532	76	2695	0.257	ug/l #	76
20) Methylene Chloride	2.813	84	804	0.203	ug/l #	63
31) Cyclohexane	5.562	56	6099	0.907	ug/l #	1
36) 1,1-Dichloropropene	5.562	75	23899	4.655	ug/l #	51
38) Carbon Tetrachloride	5.562	117	30863	5.632	ug/l #	15
76) 1,2,3-Trichloropropane	11.079	75	110667	26.767	ug/l #	35
81) trans-1,4-Dichloro-2-b...	11.079	75	110667	68.963	ug/l #	8
94) Hexachlorobutadiene	13.719	225	866	0.502	ug/l	96
-----						

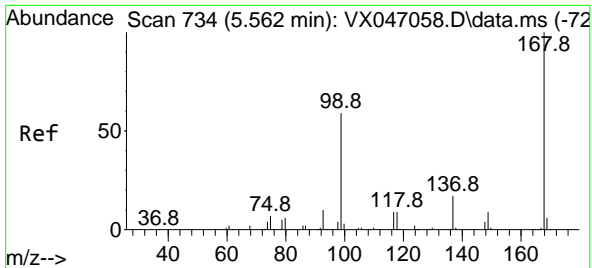
(#) = qualifier out of range (m) = manual integration (+) = signals summed

Data Path : Z:\voasrv\HPCHEM1\MSVOA\_X\Data\VX073125\  
 Data File : VX047192.D  
 Acq On : 31 Jul 2025 10:40  
 Operator : JC/MD  
 Sample : VX0731WBL01  
 Misc : 5.0mL/MSVOA\_X/WATER  
 ALS Vial : 4 Sample Multiplier: 1

Instrument :  
 MSVOA\_X  
 ClientSampleId :  
 VX0731WBL01

Quant Time: Aug 01 01:46:27 2025  
 Quant Method : Z:\voasrv\HPCHEM1\MSVOA\_X\Method\82X072125W.M  
 Quant Title : SW846 8260  
 QLast Update : Tue Jul 22 03:59:51 2025  
 Response via : Initial Calibration

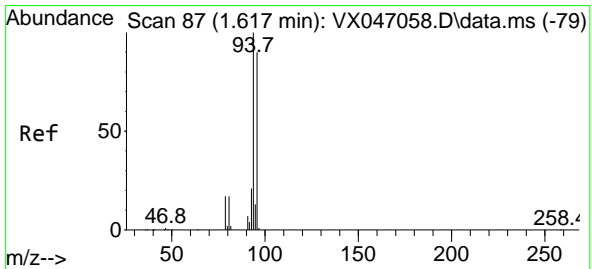
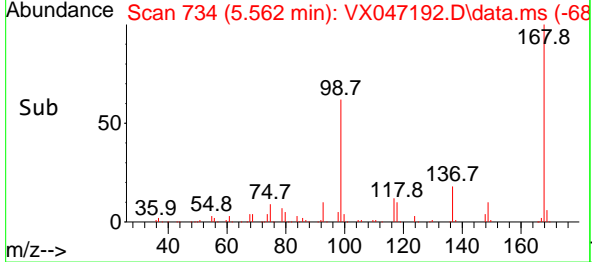
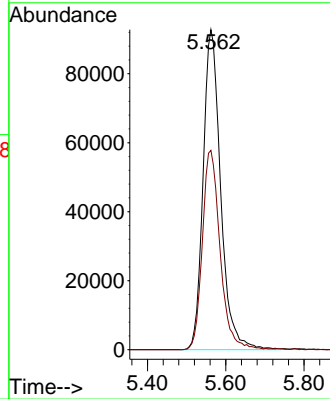
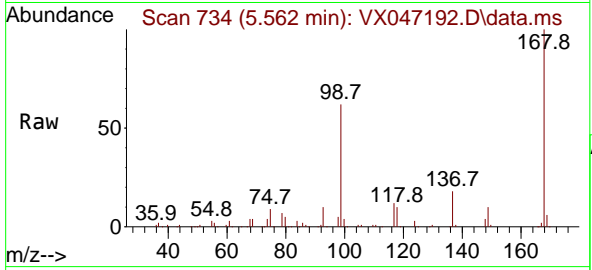




#1  
 Pentafluorobenzene  
 Concen: 50.000 ug/l  
 RT: 5.562 min Scan# 71  
 Delta R.T. 0.000 min  
 Lab File: VX047192.D  
 Acq: 31 Jul 2025 10:40

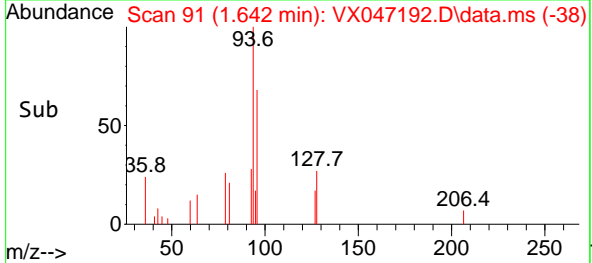
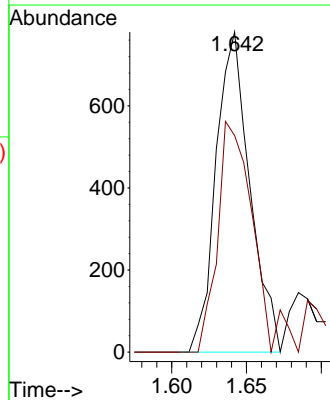
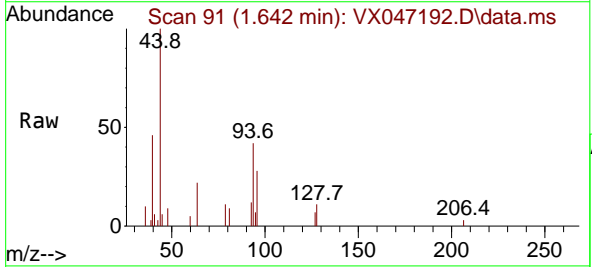
Instrument :  
 MSVOA\_X  
 ClientSampleId :  
 VX0731WBL01

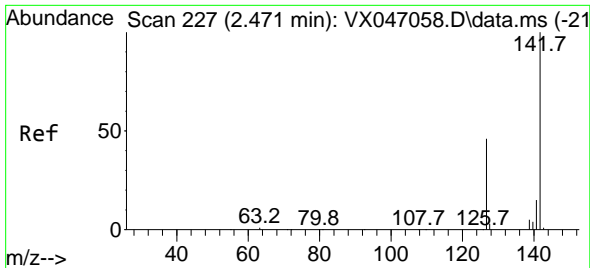
Tgt Ion:168 Resp: 288817  
 Ion Ratio Lower Upper  
 168 100  
 99 62.3 48.0 72.0



#5  
 Bromomethane  
 Concen: 0.554 ug/l  
 RT: 1.642 min Scan# 91  
 Delta R.T. 0.025 min  
 Lab File: VX047192.D  
 Acq: 31 Jul 2025 10:40

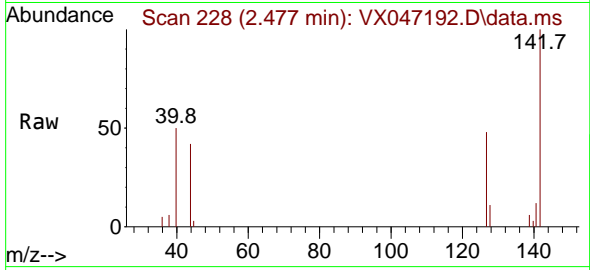
Tgt Ion: 94 Resp: 1227  
 Ion Ratio Lower Upper  
 94 100  
 96 67.7 72.3 108.5#





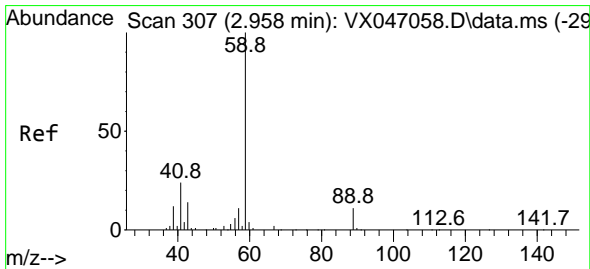
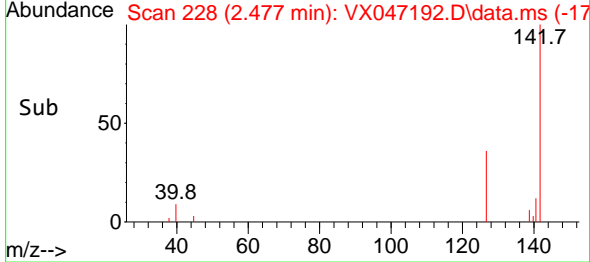
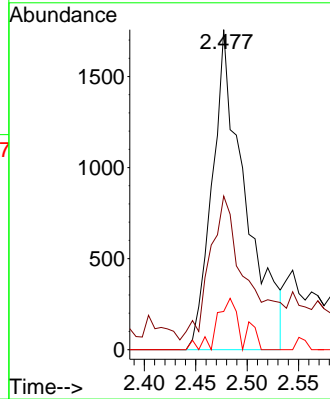
#10  
Methyl Iodide  
Concen: 1.055 ug/l  
RT: 2.477 min Scan# 21  
Delta R.T. 0.007 min  
Lab File: VX047192.D  
Acq: 31 Jul 2025 10:40

Instrument : MSVOA\_X  
ClientSampleId : VX0731WBL01



Tgt Ion:142 Resp: 3941

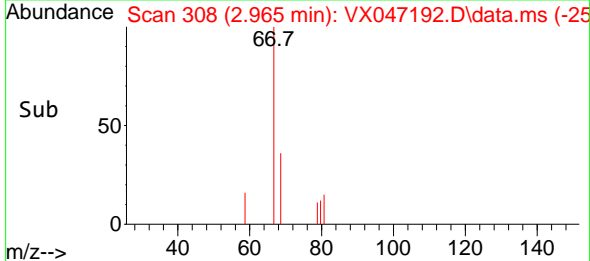
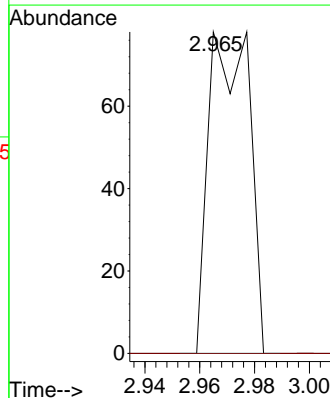
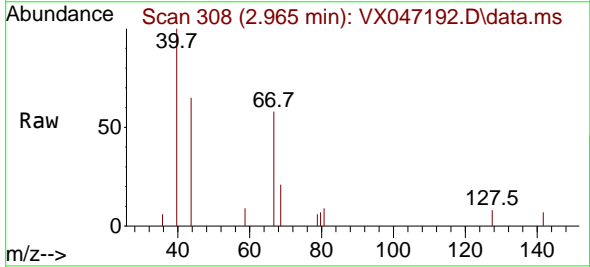
Ion	Ratio	Lower	Upper
142	100		
127	51.1	36.6	54.8
141	9.1	10.9	16.3#

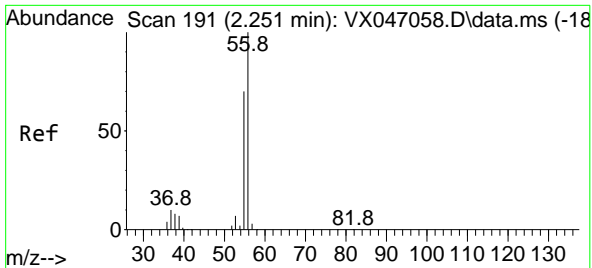


#11  
Tert butyl alcohol  
Concen: Below Cal  
RT: 2.965 min Scan# 308  
Delta R.T. 0.007 min  
Lab File: VX047192.D  
Acq: 31 Jul 2025 10:40

Tgt Ion: 59 Resp: 80

Ion	Ratio	Lower	Upper
59	100		
57	0.0	8.5	12.7#

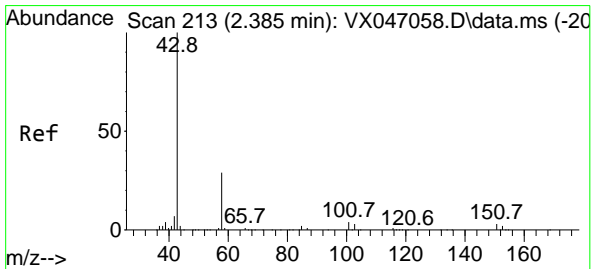
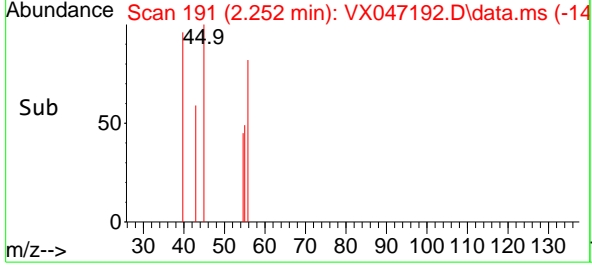
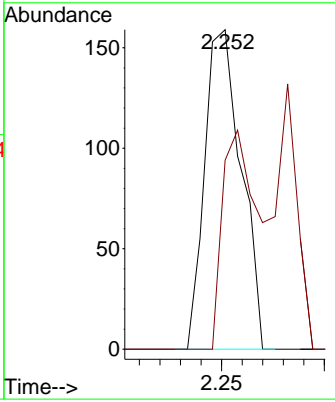
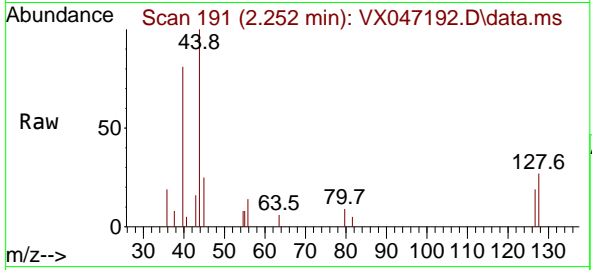




#13  
 Acrolein  
 Concen: 0.253 ug/l  
 RT: 2.252 min Scan# 191  
 Delta R.T. 0.000 min  
 Lab File: VX047192.D  
 Acq: 31 Jul 2025 10:40

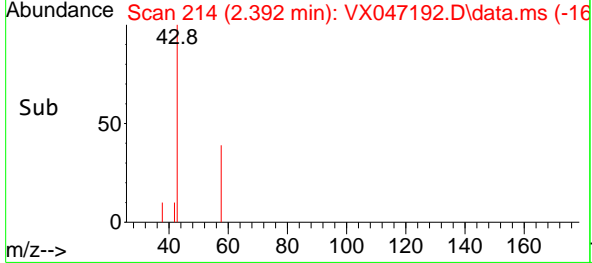
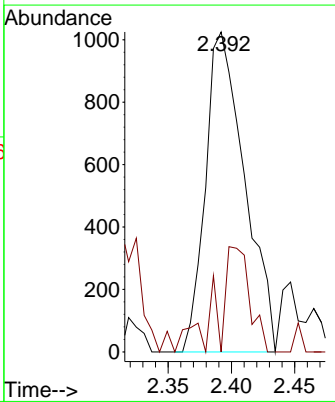
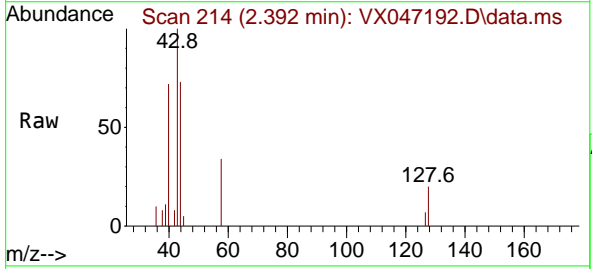
Instrument : MSVOA\_X  
 ClientSampleId : VX0731WBL01

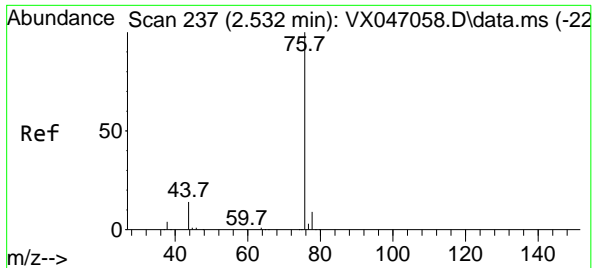
Tgt Ion: 56 Resp: 196  
 Ion Ratio Lower Upper  
 56 100  
 55 63.8 55.7 83.5



#16  
 Acetone  
 Concen: 1.530 ug/l  
 RT: 2.392 min Scan# 214  
 Delta R.T. 0.007 min  
 Lab File: VX047192.D  
 Acq: 31 Jul 2025 10:40

Tgt Ion: 43 Resp: 2205  
 Ion Ratio Lower Upper  
 43 100  
 58 0.0 24.0 36.0#

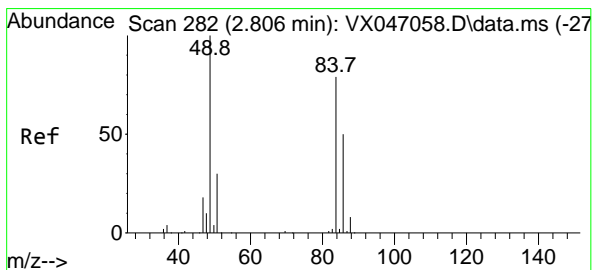
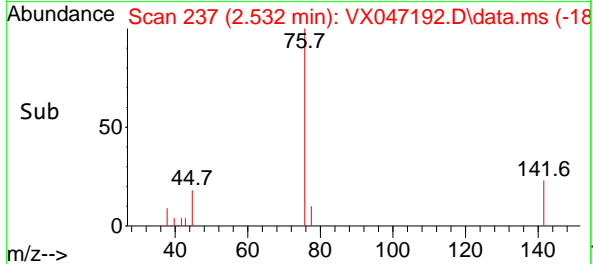
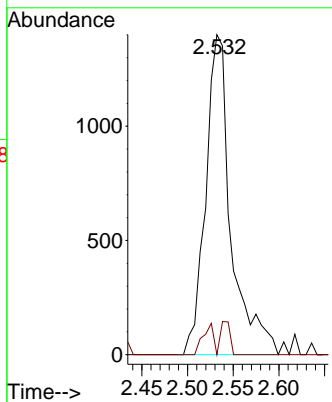
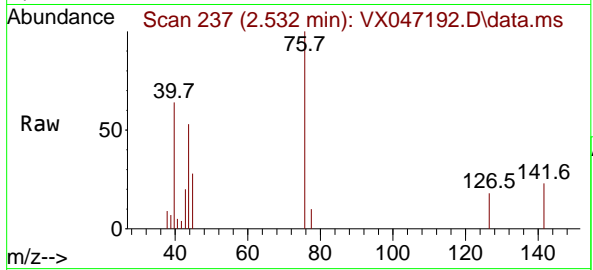




#17  
 Carbon Disulfide  
 Concen: 0.257 ug/l  
 RT: 2.532 min Scan# 21  
 Delta R.T. 0.000 min  
 Lab File: VX047192.D  
 Acq: 31 Jul 2025 10:40

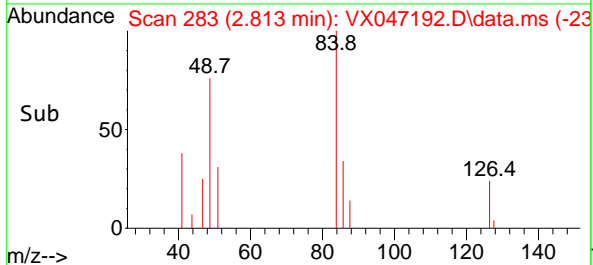
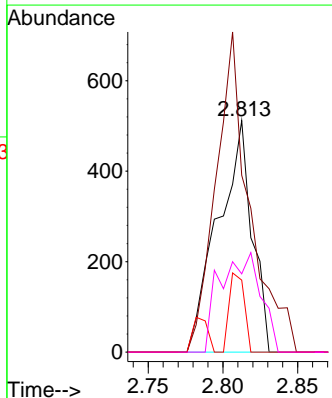
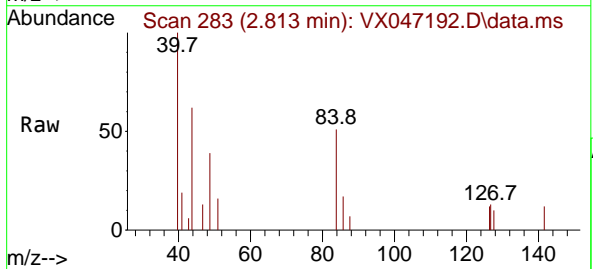
Instrument : MSVOA\_X  
 Client Sample Id : VX0731WBL01

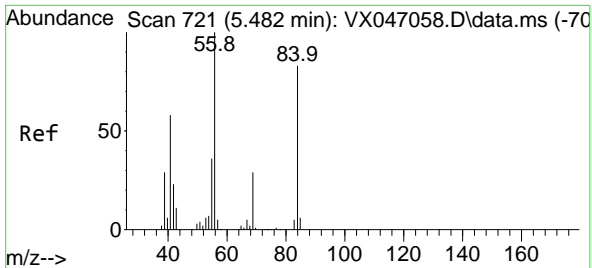
Tgt Ion: 76 Resp: 2695  
 Ion Ratio Lower Upper  
 76 100  
 78 0.0 7.0 10.4#



#20  
 Methylene Chloride  
 Concen: 0.203 ug/l  
 RT: 2.813 min Scan# 283  
 Delta R.T. 0.007 min  
 Lab File: VX047192.D  
 Acq: 31 Jul 2025 10:40

Tgt Ion: 84 Resp: 804  
 Ion Ratio Lower Upper  
 84 100  
 49 76.4 101.6 152.4#  
 51 31.1 30.3 45.5  
 86 33.8 50.6 75.8#

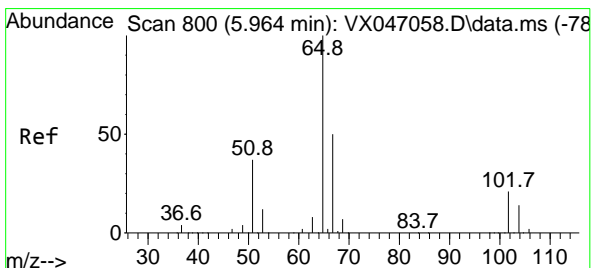
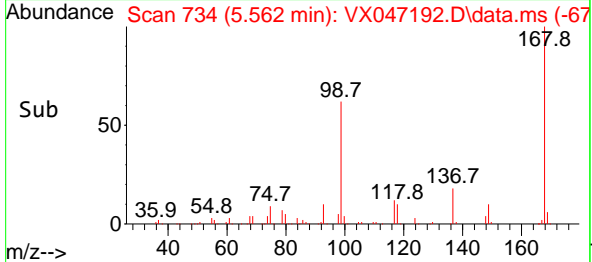
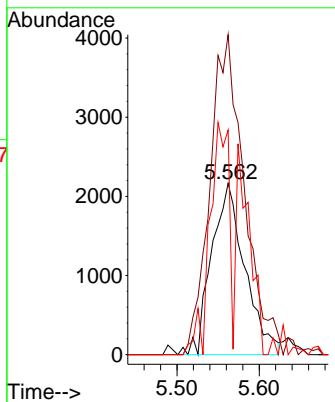
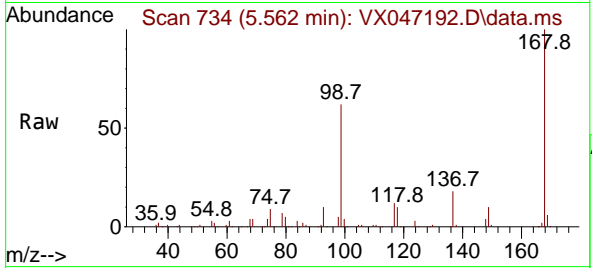




#31  
 Cyclohexane  
 Concen: 0.907 ug/l  
 RT: 5.562 min Scan# 71  
 Delta R.T. 0.080 min  
 Lab File: VX047192.D  
 Acq: 31 Jul 2025 10:40

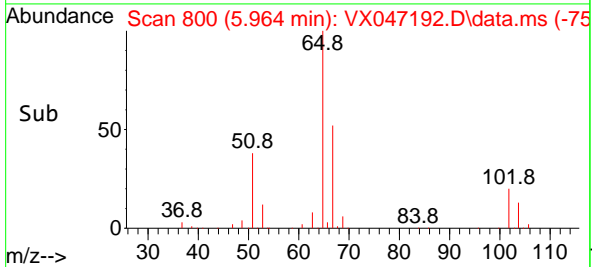
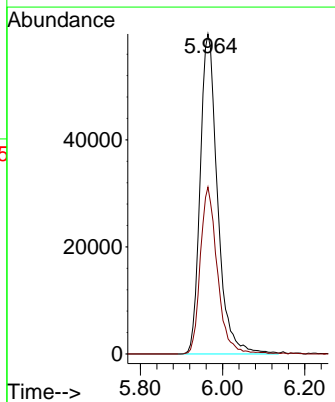
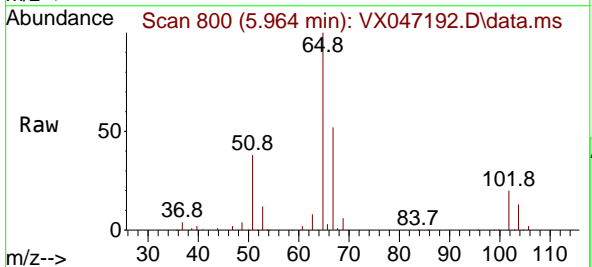
Instrument :  
 MSVOA\_X  
 ClientSampleId :  
 VX0731WBL01

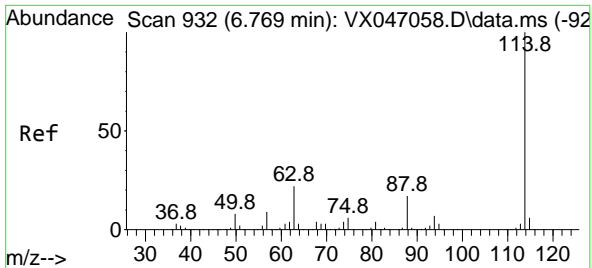
Tgt Ion	Resp	Lower	Upper
56	6099		
56	100		
69	179.4	23.3	34.9#
84	126.0	66.5	99.7#



#33  
 1,2-Dichloroethane-d4  
 Concen: 48.732 ug/l  
 RT: 5.964 min Scan# 800  
 Delta R.T. 0.000 min  
 Lab File: VX047192.D  
 Acq: 31 Jul 2025 10:40

Tgt Ion	Resp	Lower	Upper
65	175327		
65	100		
67	51.3	0.0	104.8





#34  
 1,4-Difluorobenzene  
 Concen: 50.000 ug/l  
 RT: 6.769 min Scan# 911  
 Delta R.T. 0.000 min  
 Lab File: VX047192.D  
 Acq: 31 Jul 2025 10:40

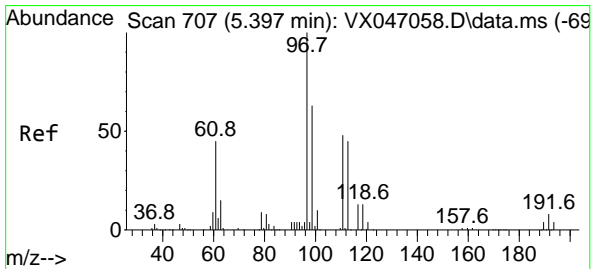
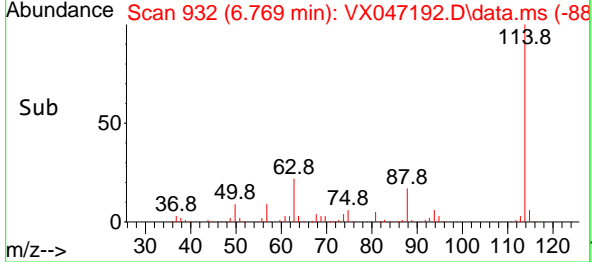
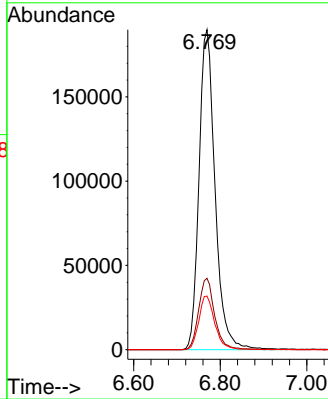
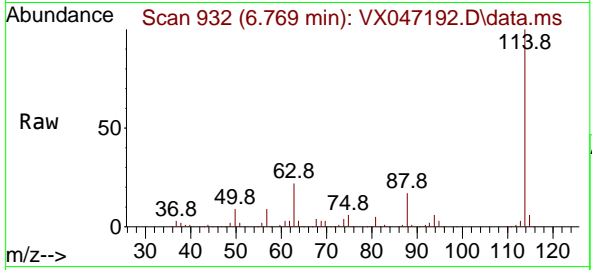
Instrument :

MSVOA\_X

ClientSampleId :

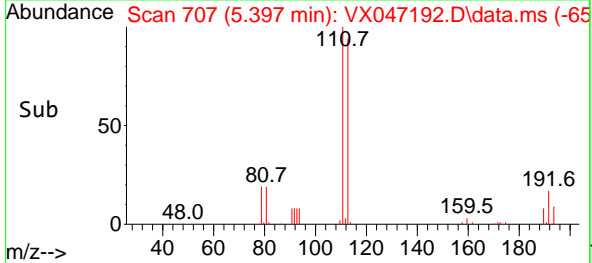
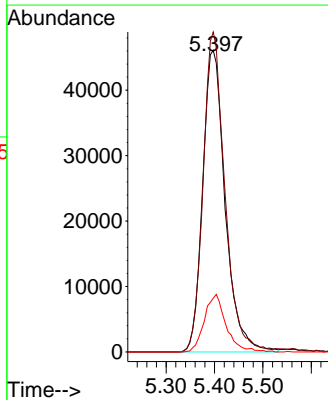
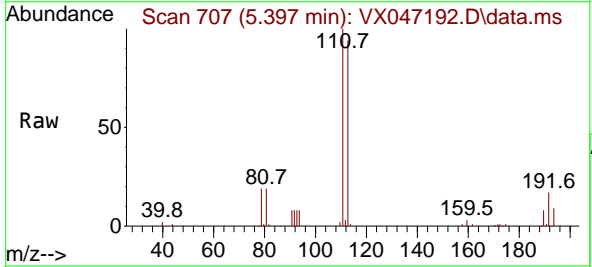
VX0731WBL01

Tgt Ion:114 Resp: 487802  
 Ion Ratio Lower Upper  
 114 100  
 63 22.3 0.0 43.2  
 88 16.8 0.0 33.8

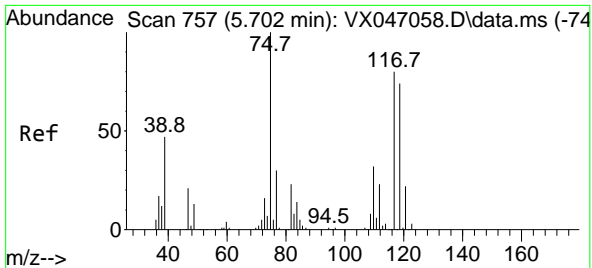


#35  
 Dibromofluoromethane  
 Concen: 49.396 ug/l  
 RT: 5.397 min Scan# 707  
 Delta R.T. 0.000 min  
 Lab File: VX047192.D  
 Acq: 31 Jul 2025 10:40

Tgt Ion:113 Resp: 148774  
 Ion Ratio Lower Upper  
 113 100  
 111 102.4 82.6 124.0  
 192 18.5 14.9 22.3



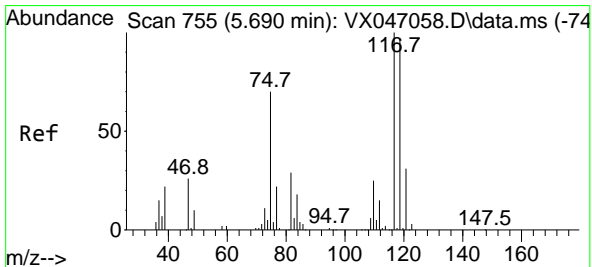
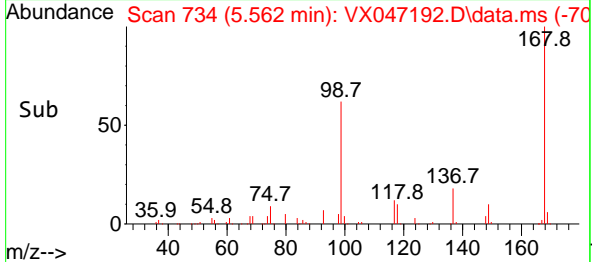
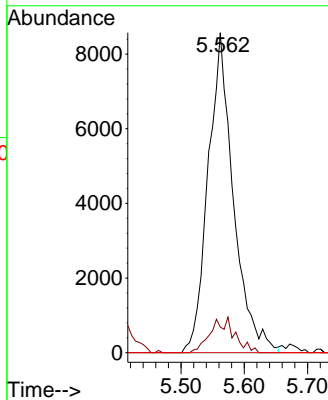
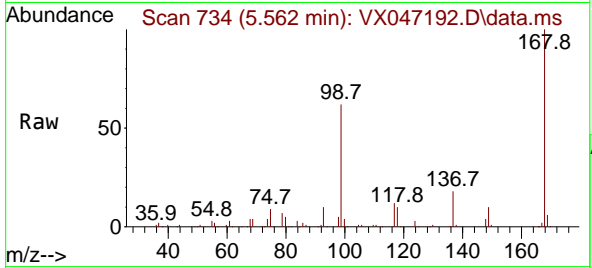




#36  
 1,1-Dichloropropene  
 Concen: 4.655 ug/l  
 RT: 5.562 min Scan# 71  
 Delta R.T. -0.140 min  
 Lab File: VX047192.D  
 Acq: 31 Jul 2025 10:40

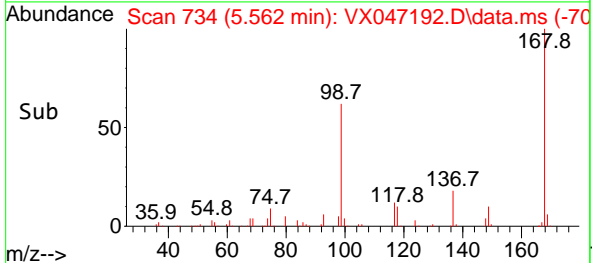
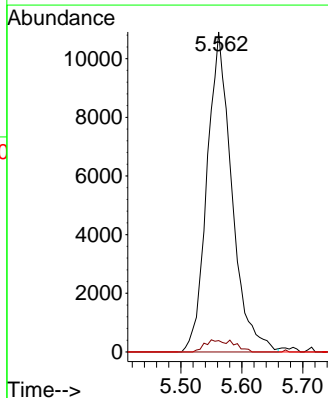
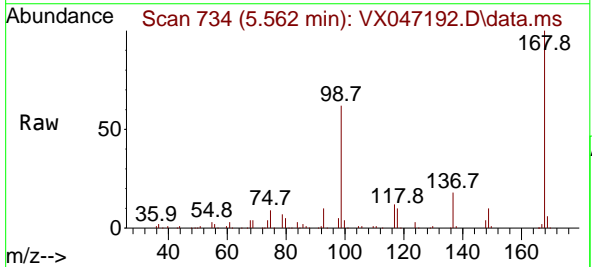
Instrument : MSVOA\_X  
 ClientSampleId : VX0731WBL01

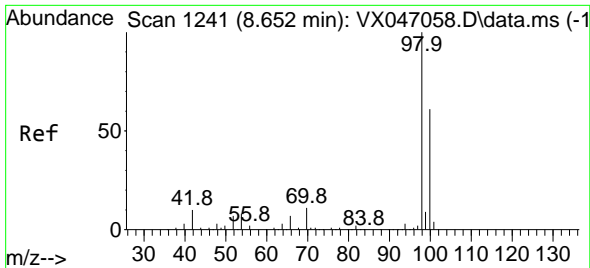
Tgt Ion	Resp	Lower	Upper
75	23899		
75	100		
110	10.4	17.2	51.5#
77	0.0	25.1	37.7#



#38  
 Carbon Tetrachloride  
 Concen: 5.632 ug/l  
 RT: 5.562 min Scan# 734  
 Delta R.T. -0.128 min  
 Lab File: VX047192.D  
 Acq: 31 Jul 2025 10:40

Tgt Ion	Resp	Lower	Upper
117	30863		
117	100		
119	3.6	76.6	115.0#
121	0.0	24.4	36.6#





#50  
 Toluene-d8  
 Concen: 46.868 ug/l  
 RT: 8.653 min Scan# 11  
 Delta R.T. 0.000 min  
 Lab File: VX047192.D  
 Acq: 31 Jul 2025 10:40

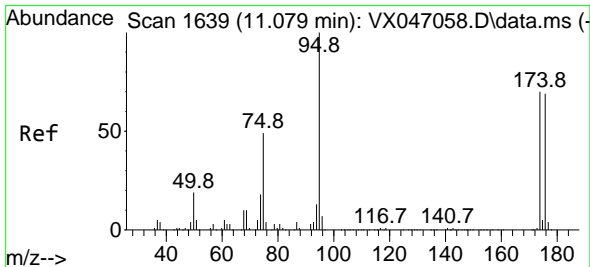
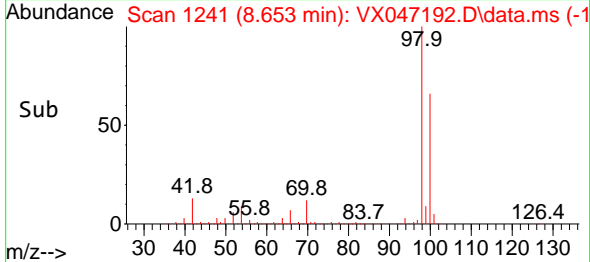
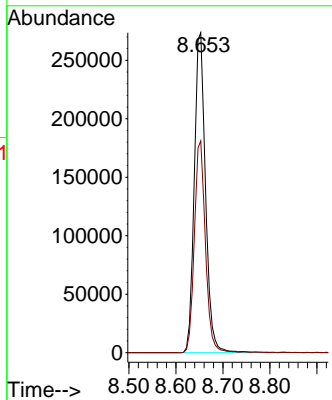
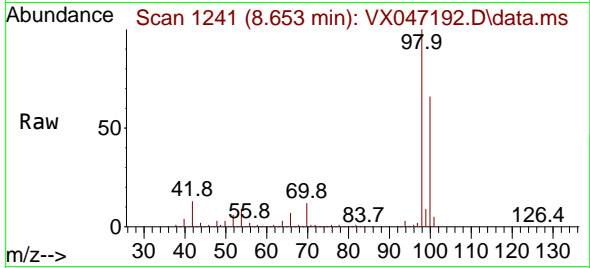
Instrument :

MSVOA\_X

ClientSampleId :

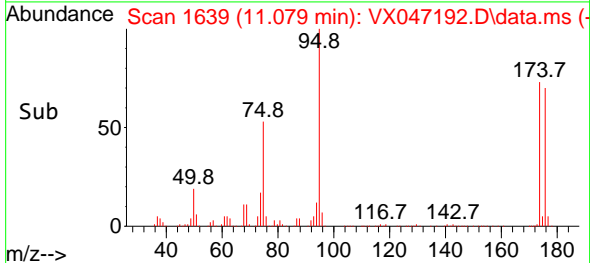
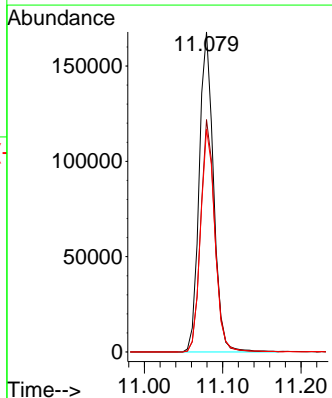
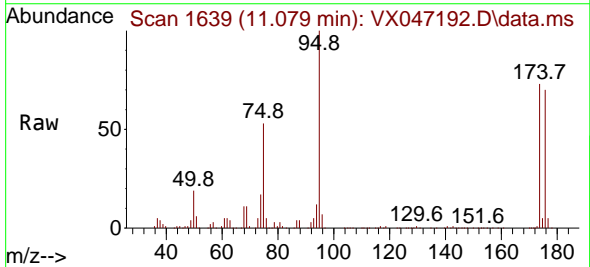
VX0731WBL01

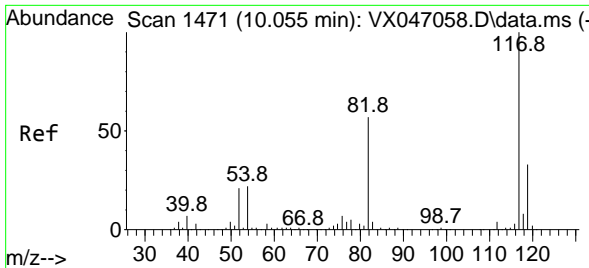
Tgt Ion: 98 Resp: 457141  
 Ion Ratio Lower Upper  
 98 100  
 100 65.2 53.3 79.9



#62  
 4-Bromofluorobenzene  
 Concen: 50.650 ug/l  
 RT: 11.079 min Scan# 1639  
 Delta R.T. 0.000 min  
 Lab File: VX047192.D  
 Acq: 31 Jul 2025 10:40

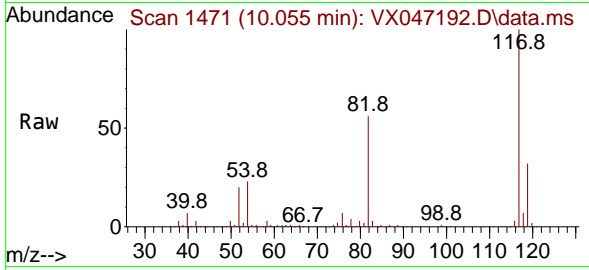
Tgt Ion: 95 Resp: 212901  
 Ion Ratio Lower Upper  
 95 100  
 174 71.7 0.0 144.6  
 176 70.2 0.0 139.6



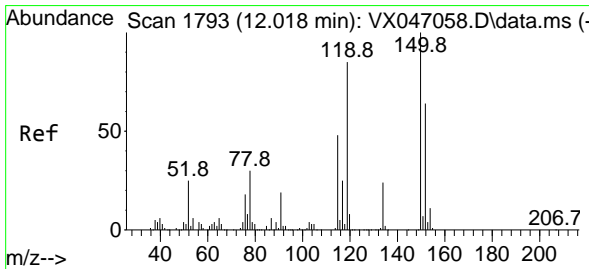
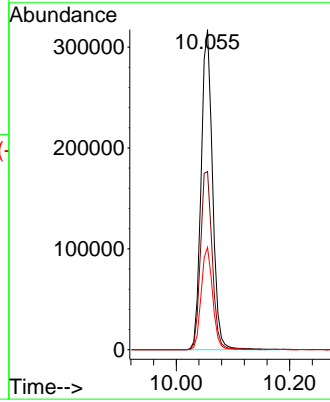
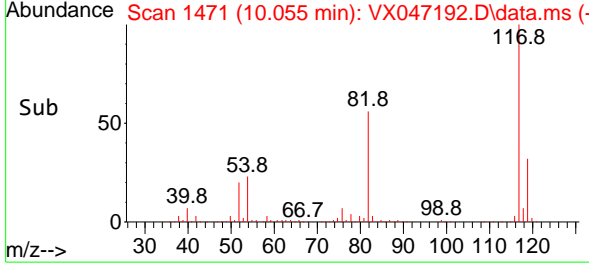


#63  
 Chlorobenzene-d5  
 Concen: 50.000 ug/l  
 RT: 10.055 min Scan# 14  
 Delta R.T. 0.000 min  
 Lab File: VX047192.D  
 Acq: 31 Jul 2025 10:40

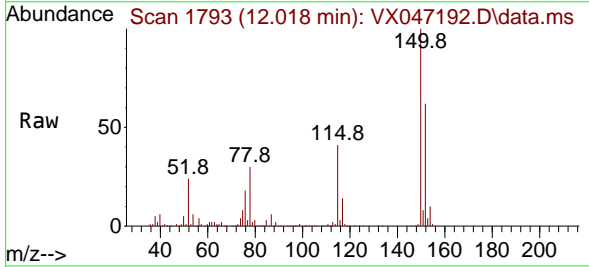
Instrument :  
 MSVOA\_X  
 ClientSampleId :  
 VX0731WBL01



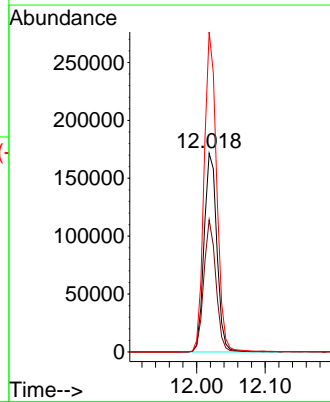
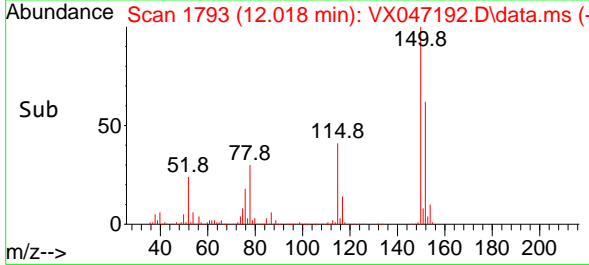
Tgt Ion:117 Resp: 442920  
 Ion Ratio Lower Upper  
 117 100  
 82 55.6 45.4 68.2  
 119 32.0 26.1 39.1

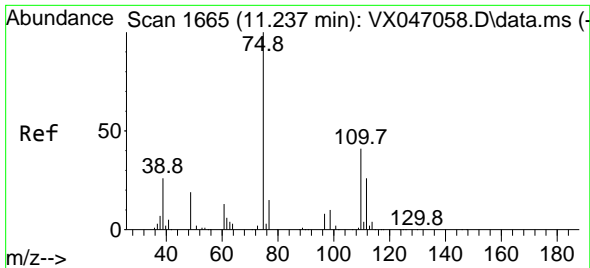


#72  
 1,4-Dichlorobenzene-d4  
 Concen: 50.000 ug/l  
 RT: 12.018 min Scan# 1793  
 Delta R.T. 0.000 min  
 Lab File: VX047192.D  
 Acq: 31 Jul 2025 10:40



Tgt Ion:152 Resp: 223368  
 Ion Ratio Lower Upper  
 152 100  
 115 63.2 45.6 136.7  
 150 158.4 0.0 354.6

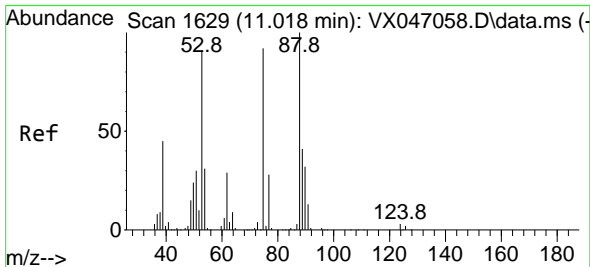
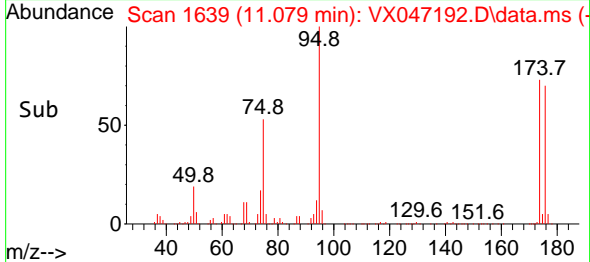
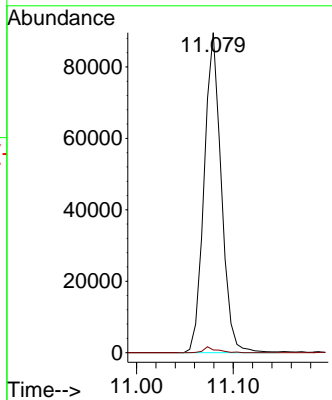
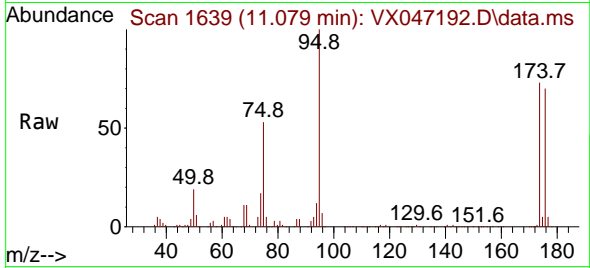




#76  
 1,2,3-Trichloropropane  
 Concen: 26.767 ug/l  
 RT: 11.079 min Scan# 1639  
 Delta R.T. -0.158 min  
 Lab File: VX047192.D  
 Acq: 31 Jul 2025 10:40

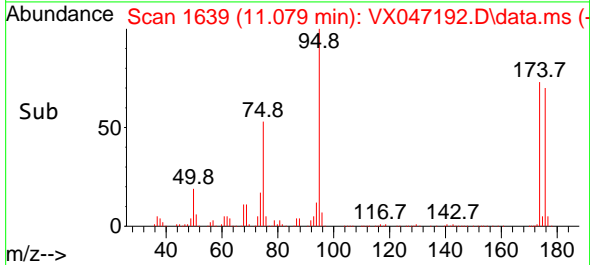
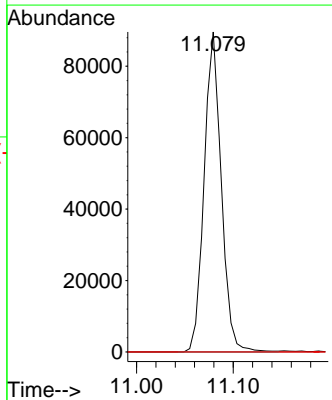
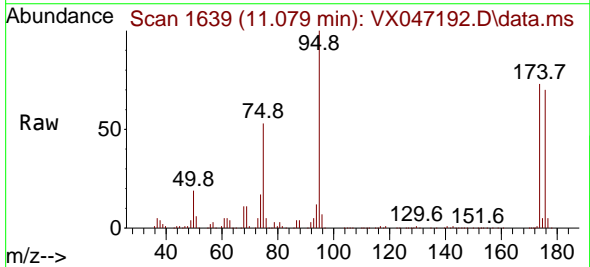
Instrument : MSVOA\_X  
 ClientSampleId : VX0731WBL01

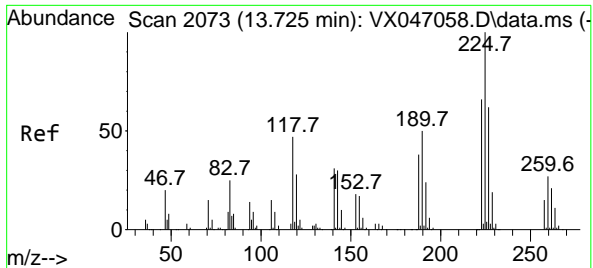
Tgt Ion: 75 Resp: 110667  
 Ion Ratio Lower Upper  
 75 100  
 77 1.4 21.6 65.0#



#81  
 trans-1,4-Dichloro-2-butene  
 Concen: 68.963 ug/l  
 RT: 11.079 min Scan# 1639  
 Delta R.T. 0.061 min  
 Lab File: VX047192.D  
 Acq: 31 Jul 2025 10:40

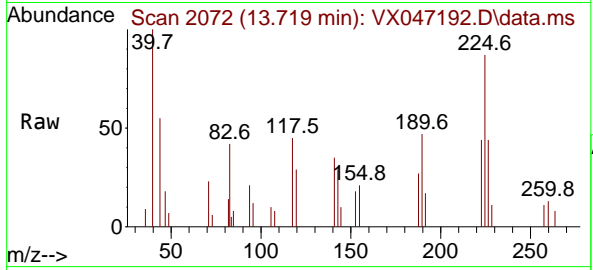
Tgt Ion: 75 Resp: 110667  
 Ion Ratio Lower Upper  
 75 100  
 53 0.0 84.2 126.4#  
 89 0.0 36.0 54.0#





#94  
 Hexachlorobutadiene  
 Concen: 0.502 ug/l  
 RT: 13.719 min Scan# 20  
 Delta R.T. -0.006 min  
 Lab File: VX047192.D  
 Acq: 31 Jul 2025 10:40

Instrument : MSVOA\_X  
 ClientSampleId : VX0731WBL01



Tgt Ion:225 Resp: 866

Ion	Ratio	Lower	Upper
225	100		
223	68.5	31.6	95.0
227	66.4	32.9	98.6

