

Data Path : Z:\voasrv\HPCHEM1\MSVOA\_X\Data\VX073125\  
 Data File : VX047196.D  
 Acq On : 31 Jul 2025 12:18  
 Operator : JC/MD  
 Sample : Q2728-02  
 Misc : 5.0mL/MSVOA\_X/WATER  
 ALS Vial : 8 Sample Multiplier: 1

Instrument :  
 MSVOA\_X  
 ClientSampleId :  
 7211931-VNJ240

Quant Time: Aug 01 01:49:34 2025  
 Quant Method : Z:\voasrv\HPCHEM1\MSVOA\_X\Method\82X072125W.M  
 Quant Title : SW846 8260  
 QLast Update : Tue Jul 22 03:59:51 2025  
 Response via : Initial Calibration

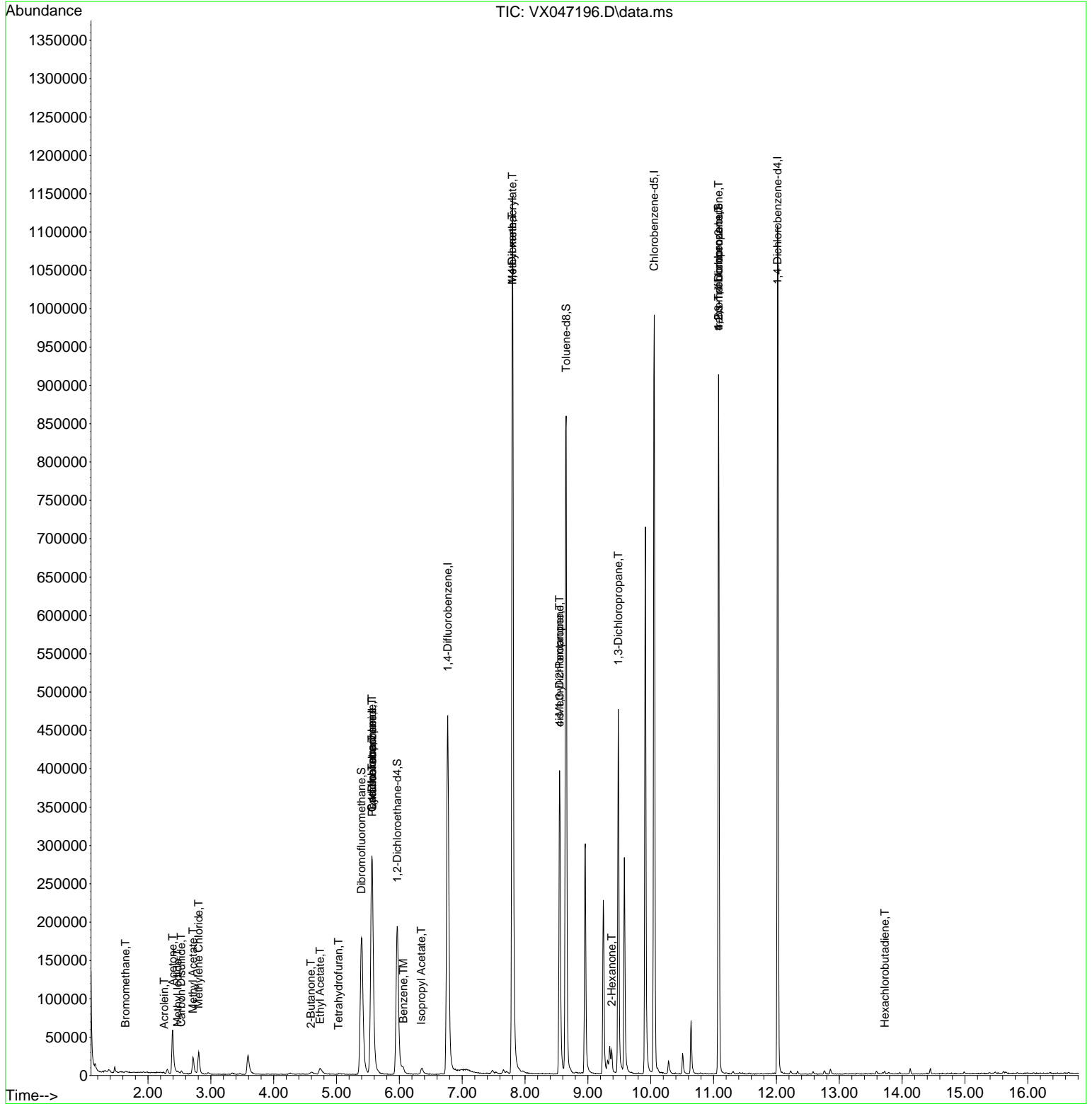
Compound	R.T.	QIon	Response	Conc	Units	Dev(Min)
-----						
Internal Standards						
1) Pentafluorobenzene	5.568	168	284701	50.000	ug/l	0.00
34) 1,4-Difluorobenzene	6.769	114	493348	50.000	ug/l	0.00
63) Chlorobenzene-d5	10.055	117	440073	50.000	ug/l	0.00
72) 1,4-Dichlorobenzene-d4	12.018	152	223625	50.000	ug/l	0.00
System Monitoring Compounds						
33) 1,2-Dichloroethane-d4	5.964	65	203415	57.357	ug/l	0.00
Spiked Amount	50.000	Range 78 - 117	Recovery	=	114.720%	
35) Dibromofluoromethane	5.397	113	172294	56.562	ug/l	0.00
Spiked Amount	50.000	Range 75 - 124	Recovery	=	113.120%	
50) Toluene-d8	8.653	98	519133	52.625	ug/l	0.00
Spiked Amount	50.000	Range 92 - 112	Recovery	=	105.260%	
62) 4-Bromofluorobenzene	11.079	95	240214	56.506	ug/l	0.00
Spiked Amount	50.000	Range 83 - 123	Recovery	=	113.020%	
Target Compounds						
						Qvalue
5) Bromomethane	1.642	94	853	0.391	ug/l #	56
10) Methyl Iodide	2.471	142	3056	0.830	ug/l	91
11) Tert butyl alcohol	2.965	59	535	Below Cal	#	72
13) Acrolein	2.258	56	376	0.492	ug/l #	44
16) Acetone	2.392	43	79689	56.090	ug/l	92
17) Carbon Disulfide	2.526	76	2236	0.216	ug/l	97
18) Methyl Acetate	2.715	43	30669	8.123	ug/l	97
20) Methylene Chloride	2.806	84	13590	3.477	ug/l	98
25) 2-Butanone	4.593	43	3156	1.526	ug/l	93
29) Tetrahydrofuran	5.032	42	576	0.432	ug/l #	48
31) Cyclohexane	5.562	56	6223	0.939	ug/l #	1
36) 1,1-Dichloropropene	5.562	75	23836	4.591	ug/l #	50
37) Ethyl Acetate	4.739	43	15747	3.291	ug/l #	94
38) Carbon Tetrachloride	5.562	117	31126	5.617	ug/l #	15
40) Benzene	6.062	78	9384	0.624	ug/l	92
43) Isopropyl Acetate	6.349	43	12631	1.693	ug/l #	89
48) Methyl methacrylate	7.799	41	106440	26.195	ug/l #	46
49) 1,4-Dioxane	7.793	88	223	4.825	ug/l #	1
51) 4-Methyl-2-Pentanone	8.549	43	149698	33.765	ug/l #	49
54) cis-1,3-Dichloropropene	8.549	75	67134	11.563	ug/l #	62
57) 1,3-Dichloropropane	9.482	76	4502	0.748	ug/l #	43
59) 2-Hexanone	9.378	43	19092	6.518	ug/l #	25
76) 1,2,3-Trichloropropane	11.079	75	124660	30.117	ug/l #	35
81) trans-1,4-Dichloro-2-b...	11.079	75	124660	77.593	ug/l #	8
94) Hexachlorobutadiene	13.725	225	487	0.282	ug/l	86

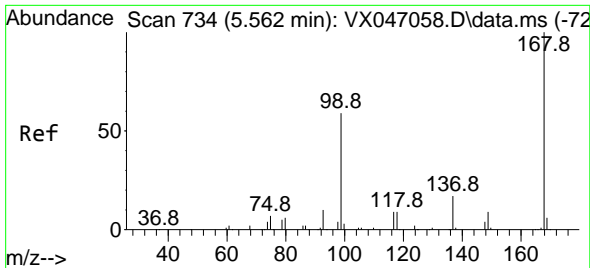
(#) = qualifier out of range (m) = manual integration (+) = signals summed

Data Path : Z:\voasrv\HPCHEM1\MSVOA\_X\Data\VX073125\  
 Data File : VX047196.D  
 Acq On : 31 Jul 2025 12:18  
 Operator : JC/MD  
 Sample : Q2728-02  
 Misc : 5.0mL/MSVOA\_X/WATER  
 ALS Vial : 8 Sample Multiplier: 1

Instrument :  
 MSVOA\_X  
 ClientSampleId :  
 7211931-VNJ240

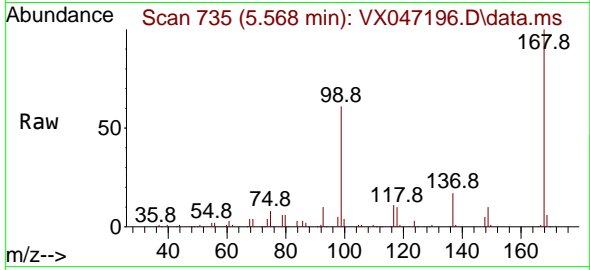
Quant Time: Aug 01 01:49:34 2025  
 Quant Method : Z:\voasrv\HPCHEM1\MSVOA\_X\Method\82X072125W.M  
 Quant Title : SW846 8260  
 QLast Update : Tue Jul 22 03:59:51 2025  
 Response via : Initial Calibration



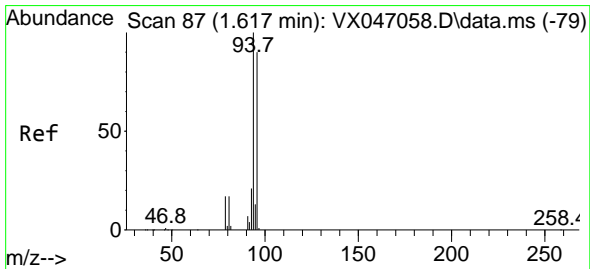
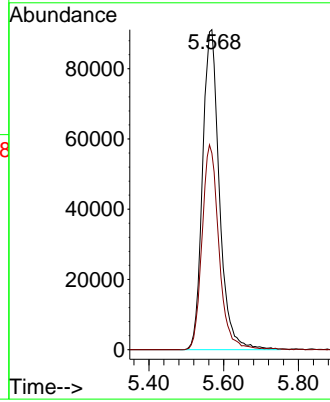
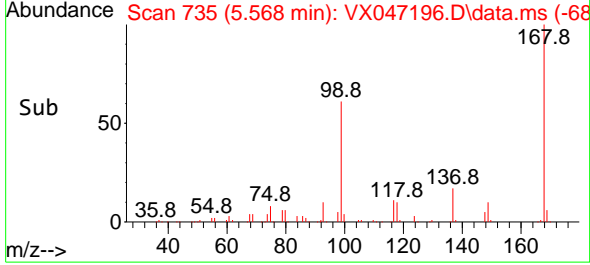


#1  
 Pentafluorobenzene  
 Concen: 50.000 ug/l  
 RT: 5.568 min Scan# 71  
 Delta R.T. 0.006 min  
 Lab File: VX047196.D  
 Acq: 31 Jul 2025 12:18

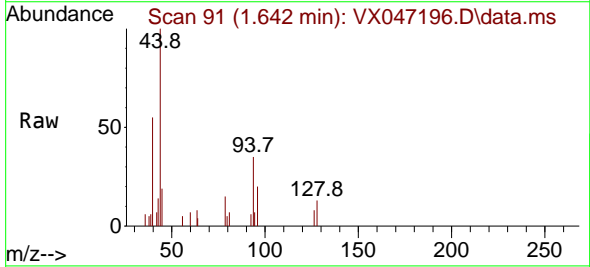
Instrument :  
 MSVOA\_X  
 ClientSampleId :  
 7211931-VNJ240



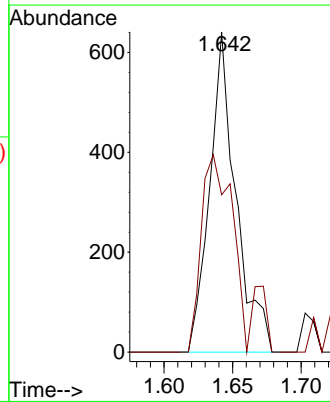
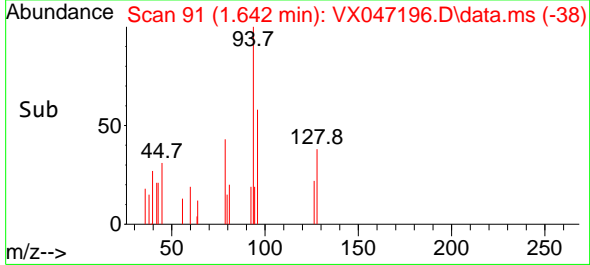
Tgt Ion:168 Resp: 284701  
 Ion Ratio Lower Upper  
 168 100  
 99 61.4 48.0 72.0

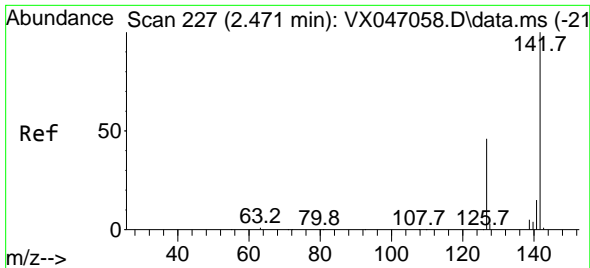


#5  
 Bromomethane  
 Concen: 0.391 ug/l  
 RT: 1.642 min Scan# 91  
 Delta R.T. 0.025 min  
 Lab File: VX047196.D  
 Acq: 31 Jul 2025 12:18



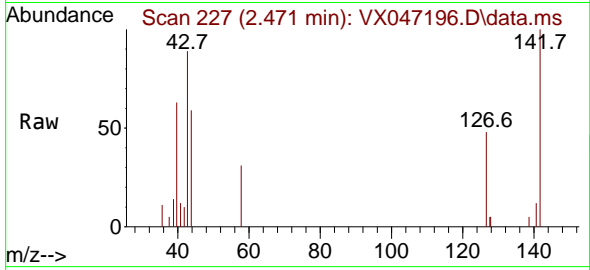
Tgt Ion: 94 Resp: 853  
 Ion Ratio Lower Upper  
 94 100  
 96 49.1 72.3 108.5#



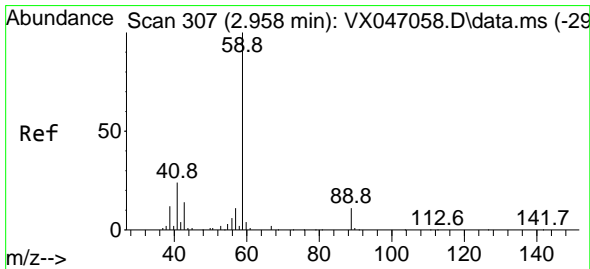
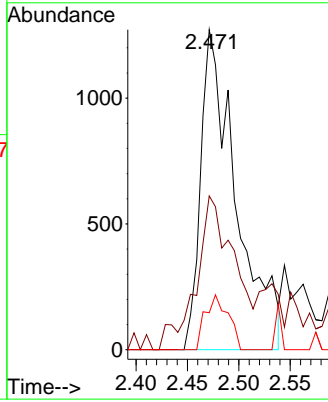
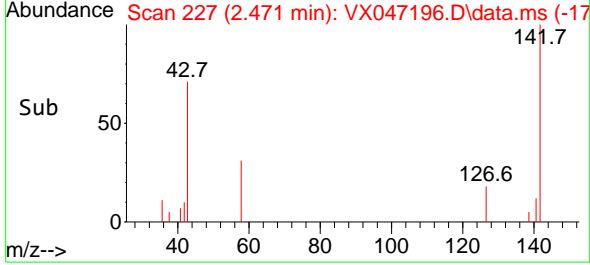


#10  
 Methyl Iodide  
 Concen: 0.830 ug/l  
 RT: 2.471 min Scan# 21  
 Delta R.T. 0.000 min  
 Lab File: VX047196.D  
 Acq: 31 Jul 2025 12:18

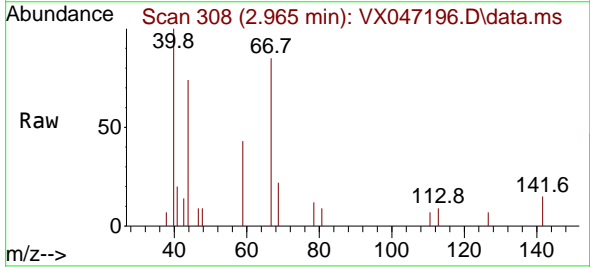
Instrument :  
 MSVOA\_X  
 ClientSampleId :  
 7211931-VNJ240



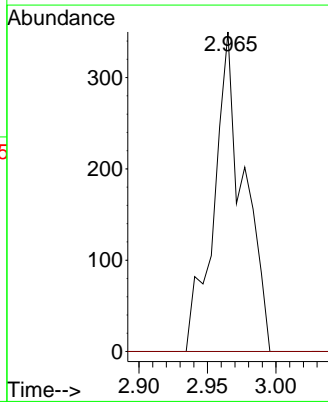
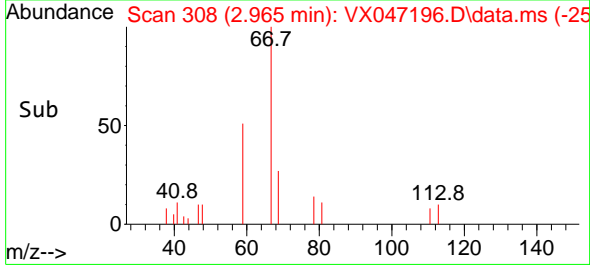
Tgt Ion:142 Resp: 3056  
 Ion Ratio Lower Upper  
 142 100  
 127 51.9 36.6 54.8  
 141 11.0 10.9 16.3

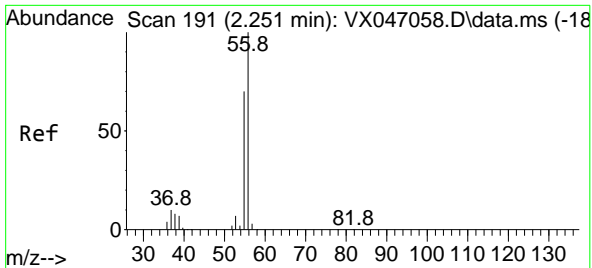


#11  
 Tert butyl alcohol  
 Concen: Below Cal  
 RT: 2.965 min Scan# 308  
 Delta R.T. 0.007 min  
 Lab File: VX047196.D  
 Acq: 31 Jul 2025 12:18



Tgt Ion: 59 Resp: 535  
 Ion Ratio Lower Upper  
 59 100  
 57 0.0 8.5 12.7#

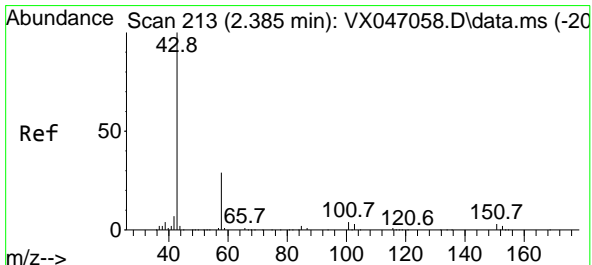
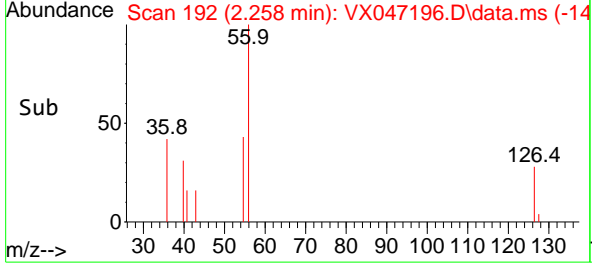
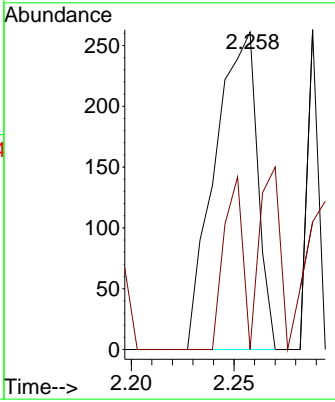
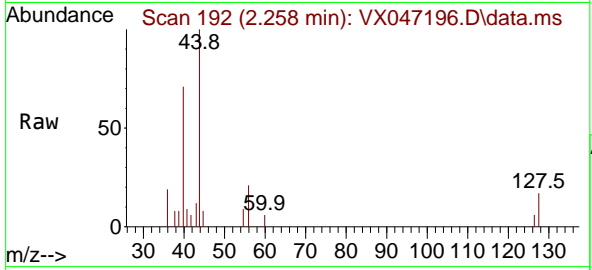




#13  
 Acrolein  
 Concen: 0.492 ug/l  
 RT: 2.258 min Scan# 191  
 Delta R.T. 0.007 min  
 Lab File: VX047196.D  
 Acq: 31 Jul 2025 12:18

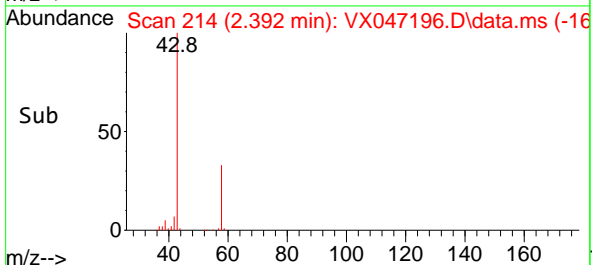
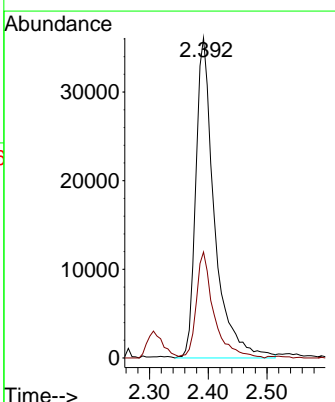
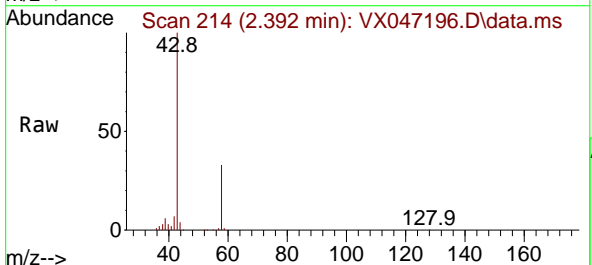
Instrument : MSVOA\_X  
 ClientSampleId : 7211931-VNJ240

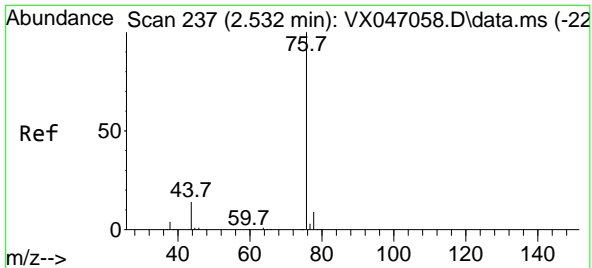
Tgt Ion: 56 Resp: 376  
 Ion Ratio Lower Upper  
 56 100  
 55 23.9 55.7 83.5#



#16  
 Acetone  
 Concen: 56.090 ug/l  
 RT: 2.392 min Scan# 214  
 Delta R.T. 0.007 min  
 Lab File: VX047196.D  
 Acq: 31 Jul 2025 12:18

Tgt Ion: 43 Resp: 79689  
 Ion Ratio Lower Upper  
 43 100  
 58 34.3 24.0 36.0

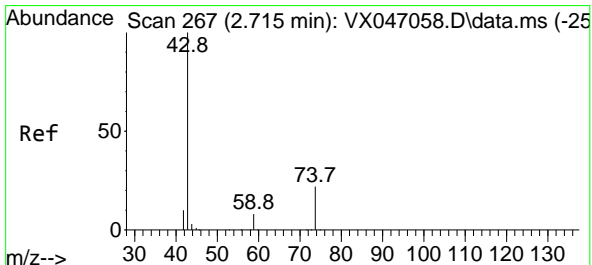
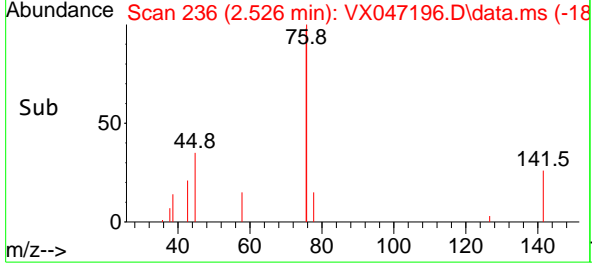
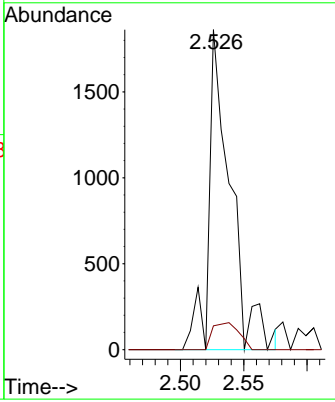
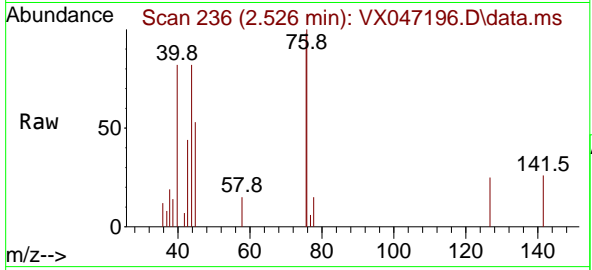




#17  
 Carbon Disulfide  
 Concen: 0.216 ug/l  
 RT: 2.526 min Scan# 21  
 Delta R.T. -0.006 min  
 Lab File: VX047196.D  
 Acq: 31 Jul 2025 12:18

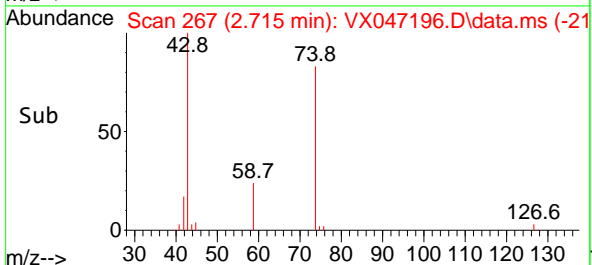
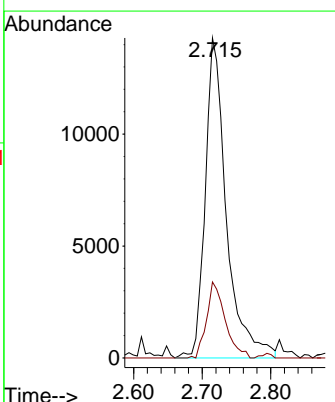
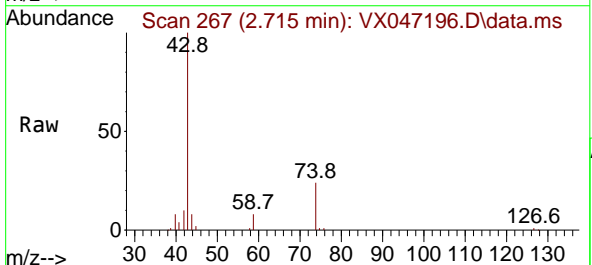
Instrument : MSVOA\_X  
 ClientSampleId : 7211931-VNJ240

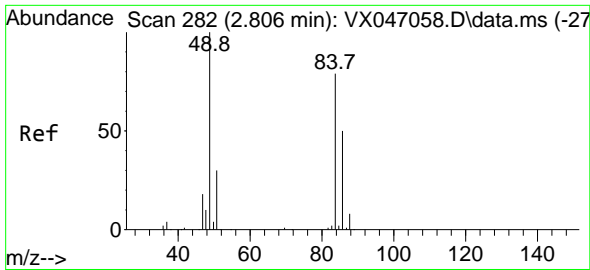
Tgt Ion	Resp	Lower	Upper
76	2236	100	10.4
78	7.5	7.0	10.4



#18  
 Methyl Acetate  
 Concen: 8.123 ug/l  
 RT: 2.715 min Scan# 267  
 Delta R.T. 0.000 min  
 Lab File: VX047196.D  
 Acq: 31 Jul 2025 12:18

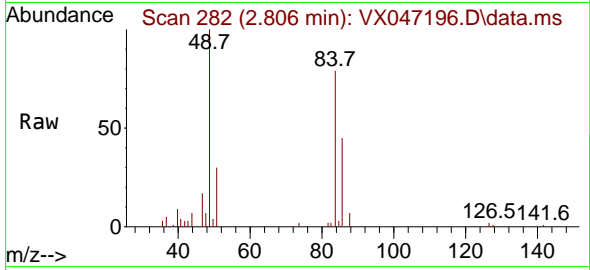
Tgt Ion	Resp	Lower	Upper
43	30669	100	26.5
74	20.8	17.7	26.5



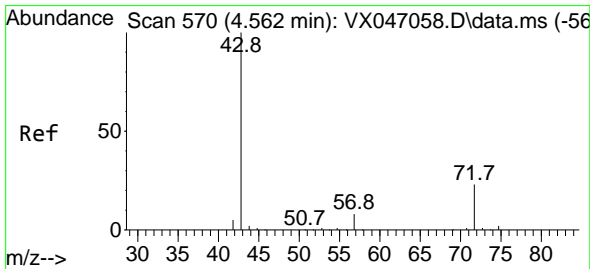
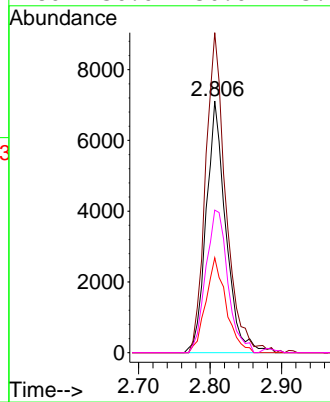
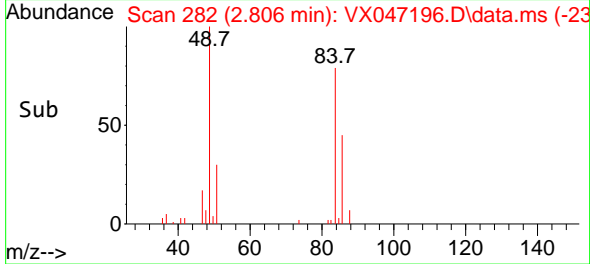


#20  
 Methylene Chloride  
 Concen: 3.477 ug/l  
 RT: 2.806 min Scan# 21  
 Delta R.T. 0.000 min  
 Lab File: VX047196.D  
 Acq: 31 Jul 2025 12:18

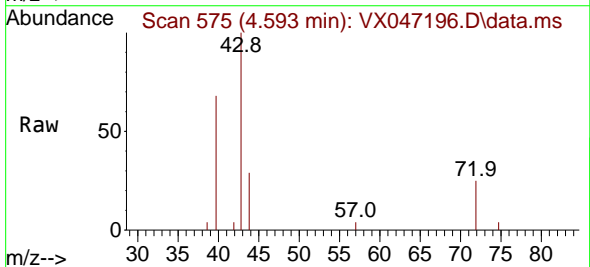
Instrument :  
 MSVOA\_X  
 ClientSampleId :  
 7211931-VNJ240



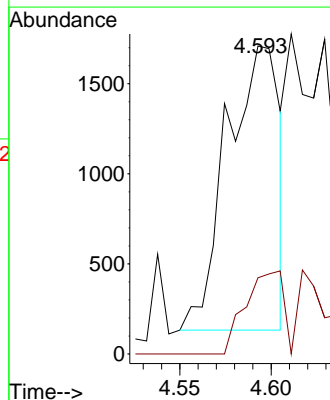
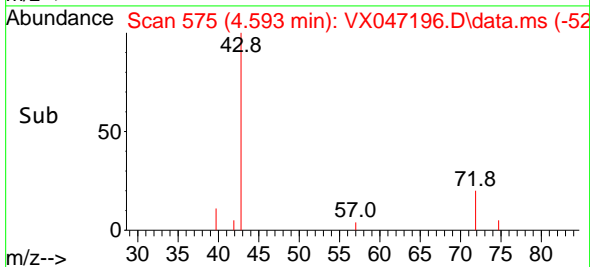
Tgt Ion: 84 Resp: 13590  
 Ion Ratio Lower Upper  
 84 100  
 49 127.1 101.6 152.4  
 51 37.7 30.3 45.5  
 86 56.6 50.6 75.8

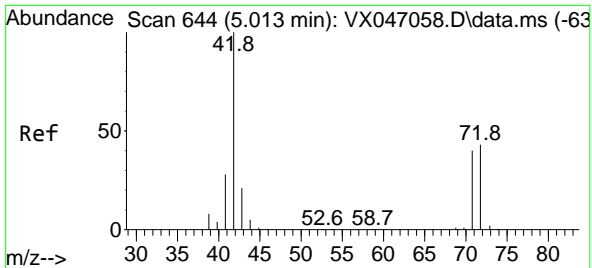


#25  
 2-Butanone  
 Concen: 1.526 ug/l  
 RT: 4.593 min Scan# 575  
 Delta R.T. 0.031 min  
 Lab File: VX047196.D  
 Acq: 31 Jul 2025 12:18



Tgt Ion: 43 Resp: 3156  
 Ion Ratio Lower Upper  
 43 100  
 72 26.8 18.8 28.2

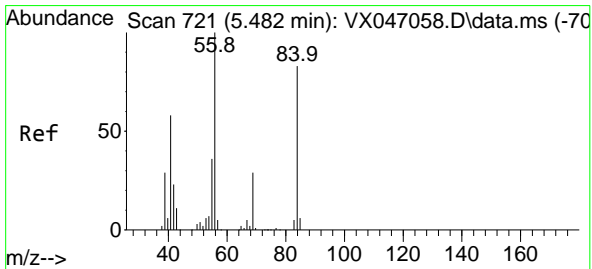
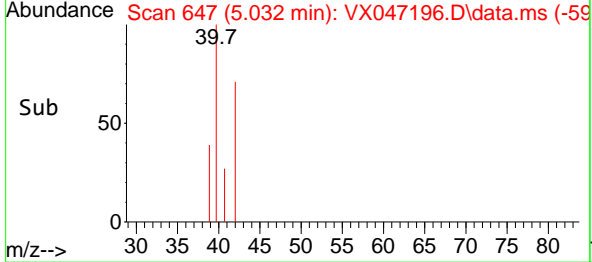
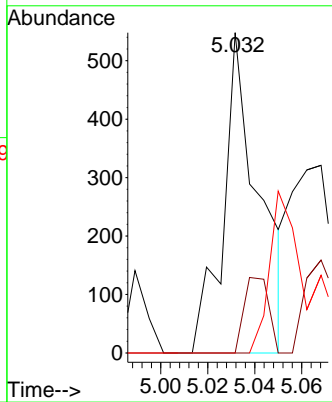
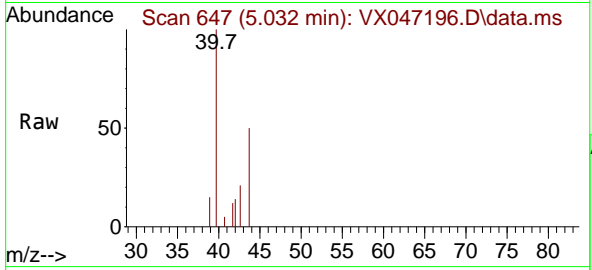




#29  
 Tetrahydrofuran  
 Concen: 0.432 ug/l  
 RT: 5.032 min Scan# 64  
 Delta R.T. 0.019 min  
 Lab File: VX047196.D  
 Acq: 31 Jul 2025 12:18

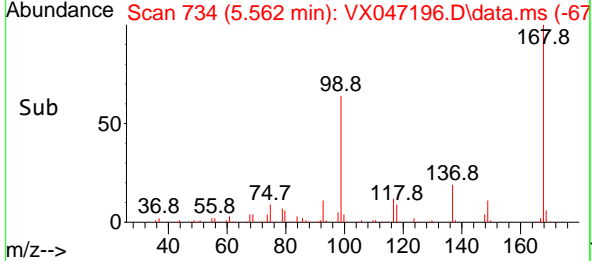
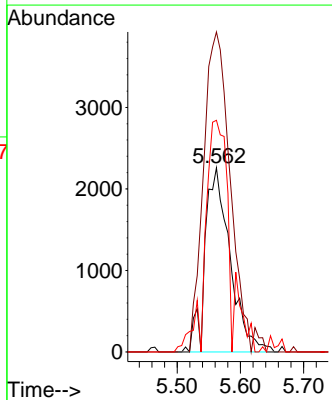
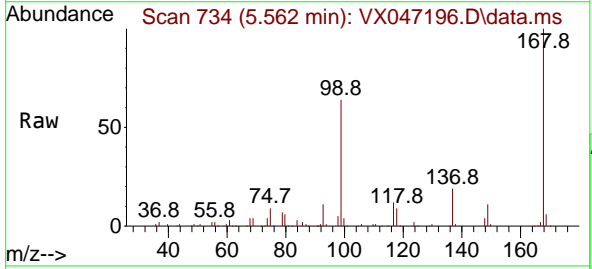
Instrument : MSVOA\_X  
 ClientSampleId : 7211931-VNJ240

Tgt Ion	Resp	Lower	Upper
42	100		
72	16.1	33.7	50.5#
71	0.0	31.0	46.4#

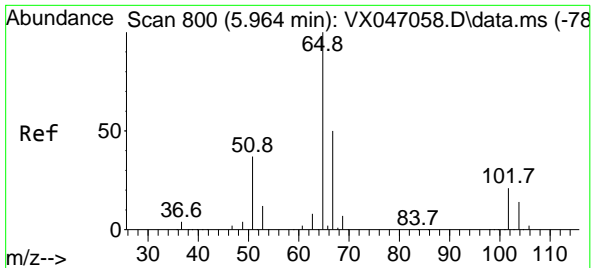


#31  
 Cyclohexane  
 Concen: 0.939 ug/l  
 RT: 5.562 min Scan# 734  
 Delta R.T. 0.080 min  
 Lab File: VX047196.D  
 Acq: 31 Jul 2025 12:18

Tgt Ion	Resp	Lower	Upper
56	100		
69	173.7	23.3	34.9#
84	122.9	66.5	99.7#



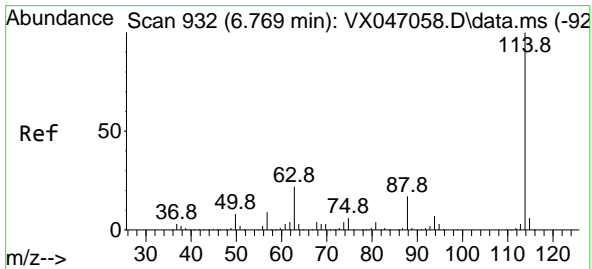
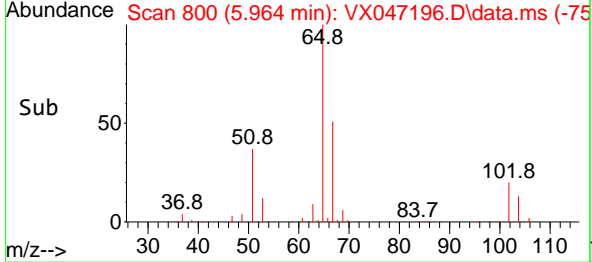
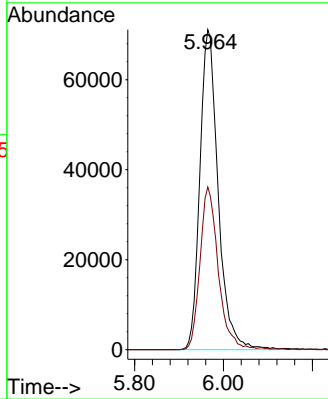
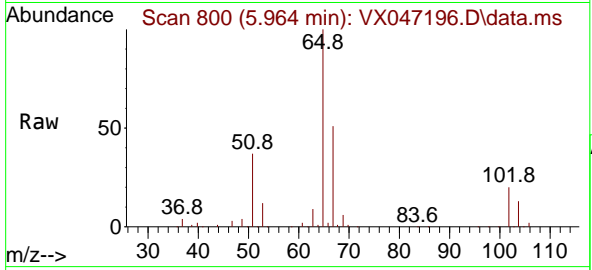




#33  
 1,2-Dichloroethane-d4  
 Concen: 57.357 ug/l  
 RT: 5.964 min Scan# 800  
 Delta R.T. 0.000 min  
 Lab File: VX047196.D  
 Acq: 31 Jul 2025 12:18

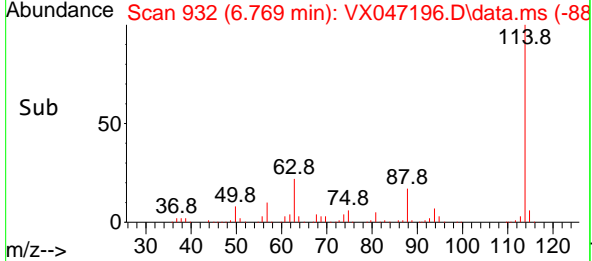
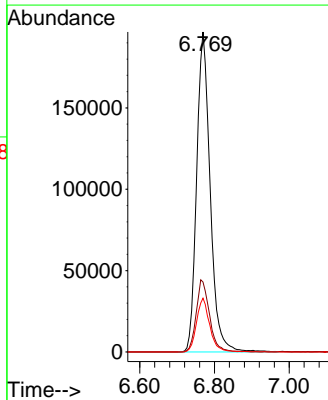
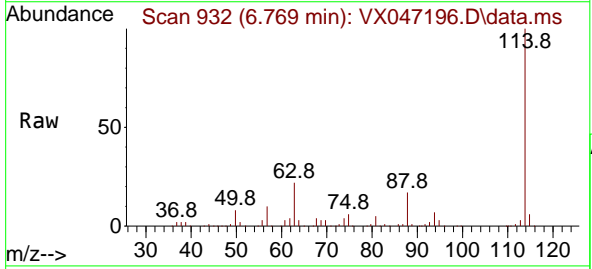
Instrument : MSVOA\_X  
 ClientSampleId : 7211931-VNJ240

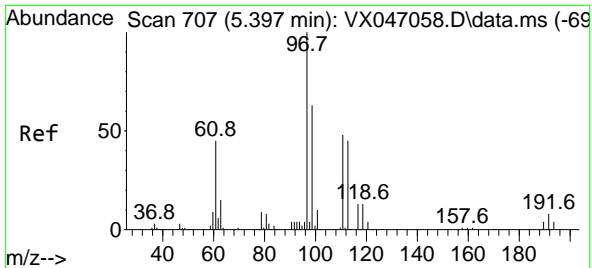
Tgt Ion: 65 Resp: 203415  
 Ion Ratio Lower Upper  
 65 100  
 67 50.7 0.0 104.8



#34  
 1,4-Difluorobenzene  
 Concen: 50.000 ug/l  
 RT: 6.769 min Scan# 932  
 Delta R.T. 0.000 min  
 Lab File: VX047196.D  
 Acq: 31 Jul 2025 12:18

Tgt Ion: 114 Resp: 493348  
 Ion Ratio Lower Upper  
 114 100  
 63 21.8 0.0 43.2  
 88 16.8 0.0 33.8

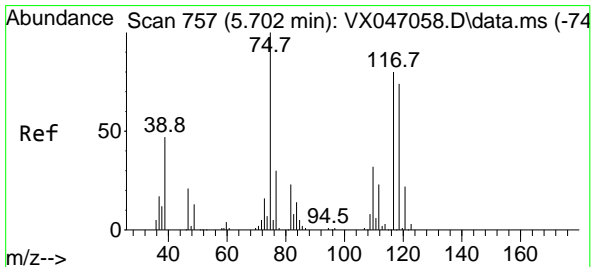
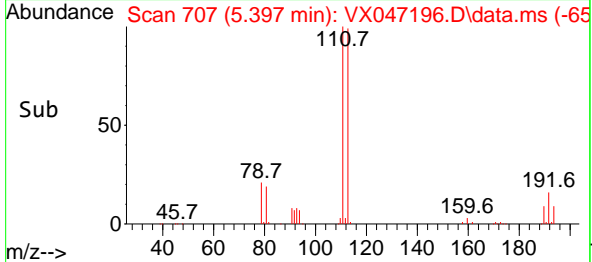
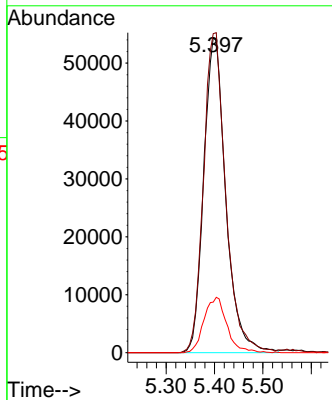
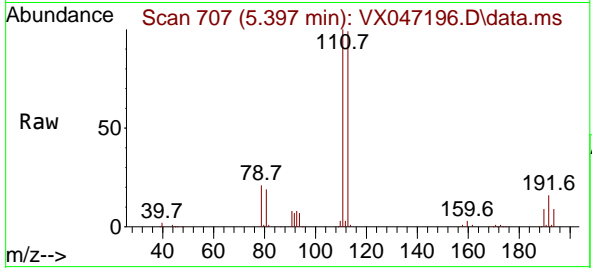




#35  
 Dibromofluoromethane  
 Concen: 56.562 ug/l  
 RT: 5.397 min Scan# 707  
 Delta R.T. 0.000 min  
 Lab File: VX047196.D  
 Acq: 31 Jul 2025 12:18

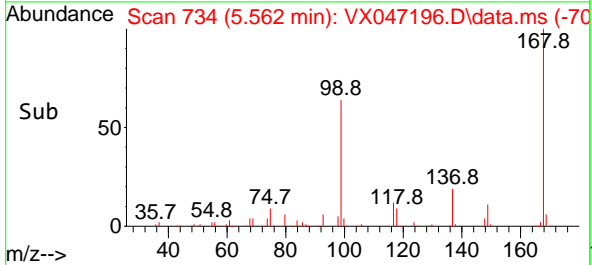
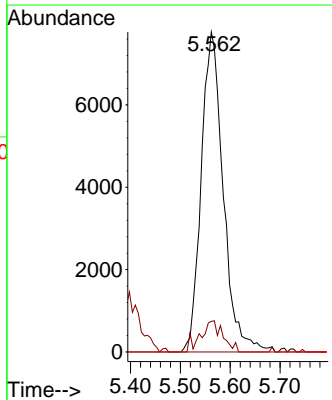
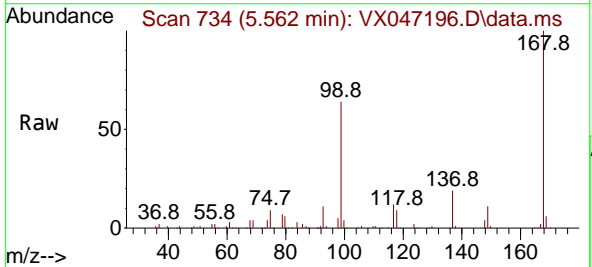
Instrument : MSVOA\_X  
 ClientSampleId : 7211931-VNJ240

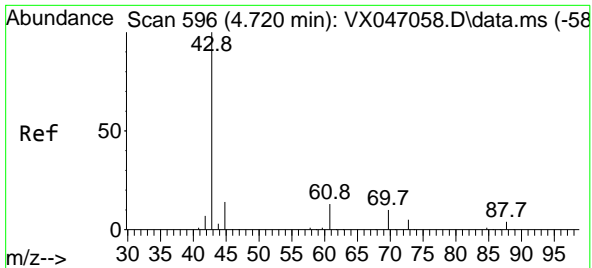
Tgt Ion	Resp	Lower	Upper
113	100		
111	102.2	82.6	124.0
192	18.2	14.9	22.3



#36  
 1,1-Dichloropropene  
 Concen: 4.591 ug/l  
 RT: 5.562 min Scan# 734  
 Delta R.T. -0.140 min  
 Lab File: VX047196.D  
 Acq: 31 Jul 2025 12:18

Tgt Ion	Resp	Lower	Upper
75	100		
110	9.0	17.2	51.5#
77	0.0	25.1	37.7#

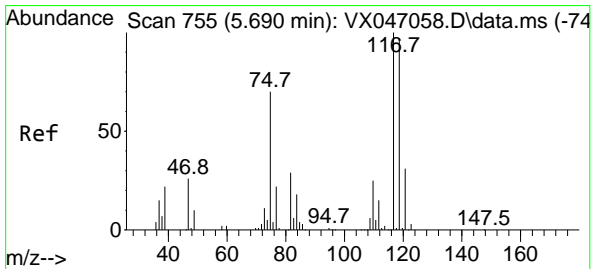
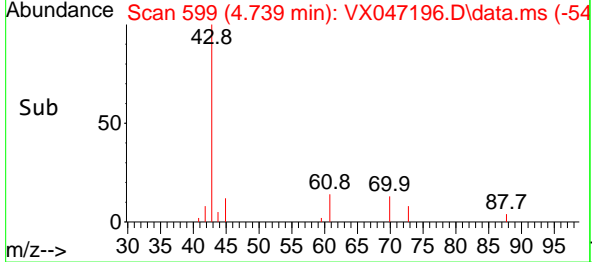
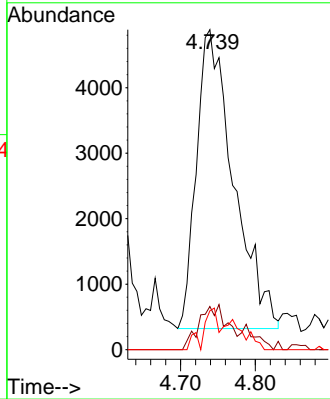
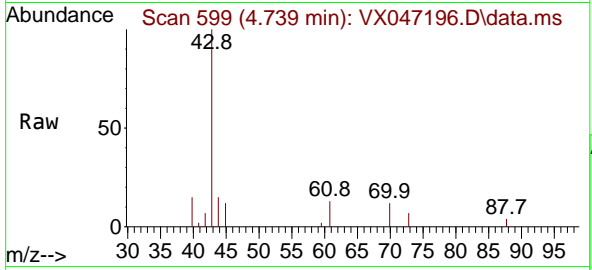




#37  
 Ethyl Acetate  
 Concen: 3.291 ug/l  
 RT: 4.739 min Scan# 51  
 Delta R.T. 0.019 min  
 Lab File: VX047196.D  
 Acq: 31 Jul 2025 12:18

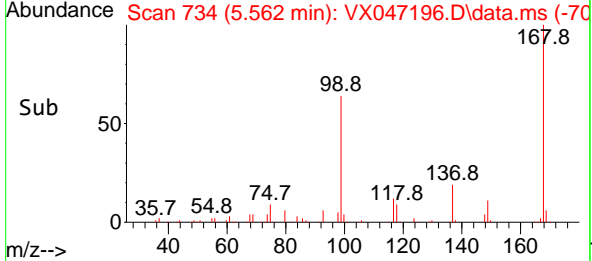
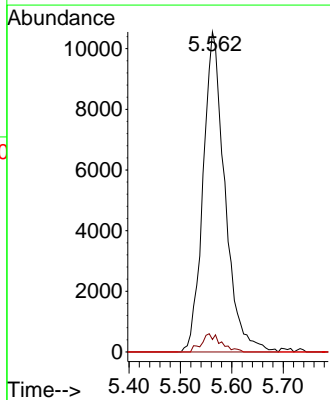
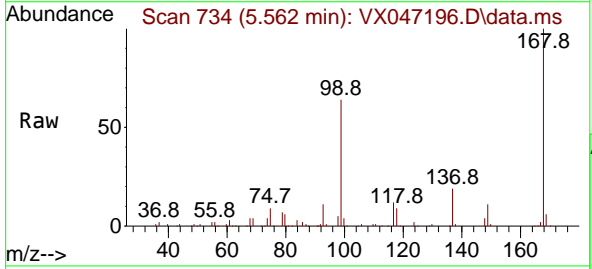
Instrument : MSVOA\_X  
 ClientSampleId : 7211931-VNJ240

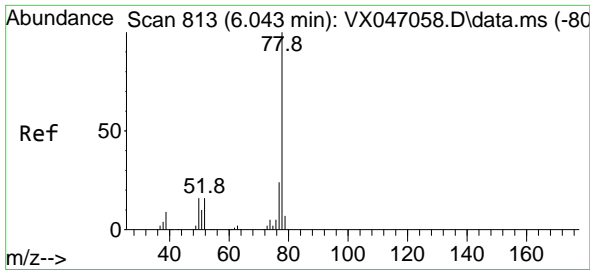
Tgt Ion	Resp	Lower	Upper
43	15747		
43	100		
61	11.3	10.2	15.2
70	6.4	8.1	12.1#



#38  
 Carbon Tetrachloride  
 Concen: 5.617 ug/l  
 RT: 5.562 min Scan# 734  
 Delta R.T. -0.128 min  
 Lab File: VX047196.D  
 Acq: 31 Jul 2025 12:18

Tgt Ion	Resp	Lower	Upper
117	31126		
117	100		
119	3.9	76.6	115.0#
121	0.0	24.4	36.6#

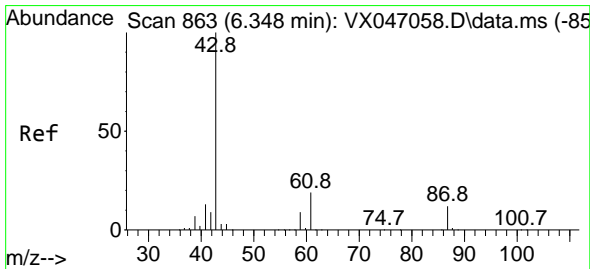
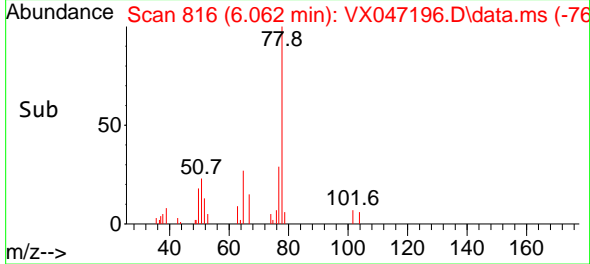
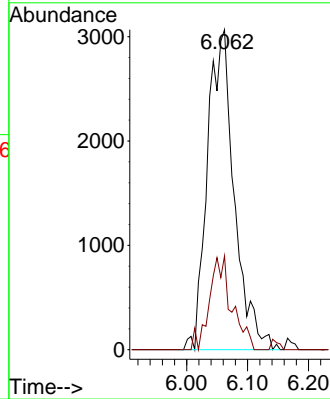
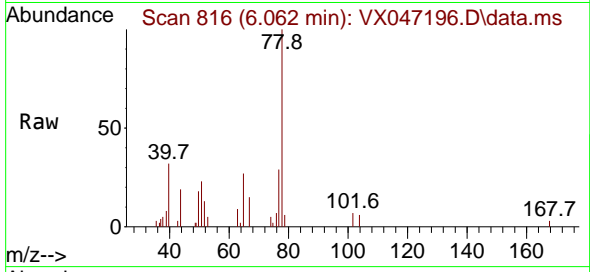




#40  
Benzene  
Concen: 0.624 ug/l  
RT: 6.062 min Scan# 813  
Delta R.T. 0.019 min  
Lab File: VX047196.D  
Acq: 31 Jul 2025 12:18

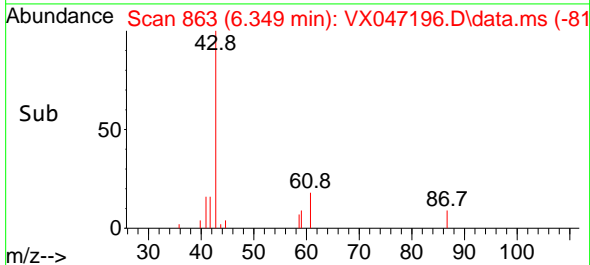
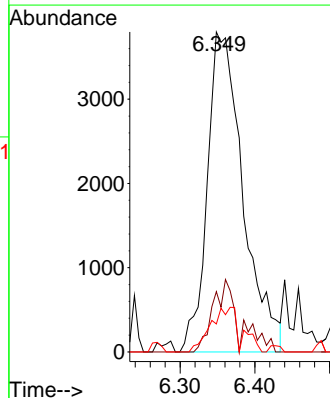
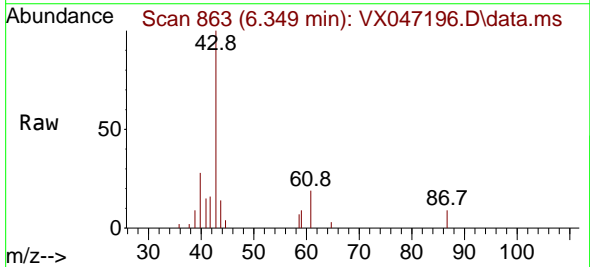
Instrument :  
MSVOA\_X  
ClientSampleId :  
7211931-VNJ240

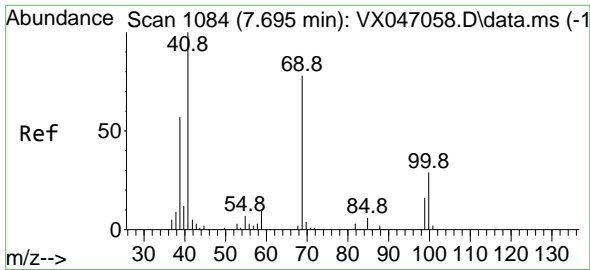
Tgt Ion: 78 Resp: 9384  
Ion Ratio Lower Upper  
78 100  
77 27.5 19.0 28.4



#43  
Isopropyl Acetate  
Concen: 1.693 ug/l  
RT: 6.349 min Scan# 863  
Delta R.T. 0.000 min  
Lab File: VX047196.D  
Acq: 31 Jul 2025 12:18

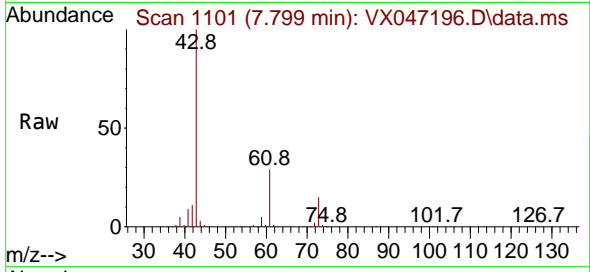
Tgt Ion: 43 Resp: 12631  
Ion Ratio Lower Upper  
43 100  
61 12.5 15.1 22.7#  
87 9.6 9.7 14.5#



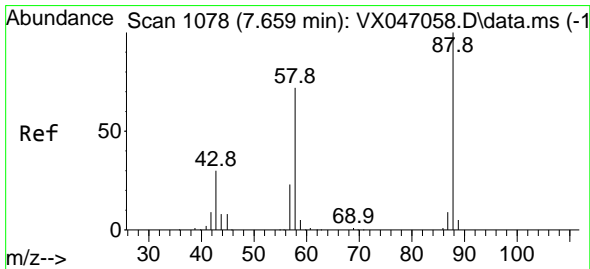
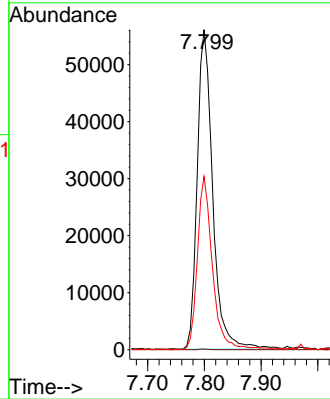
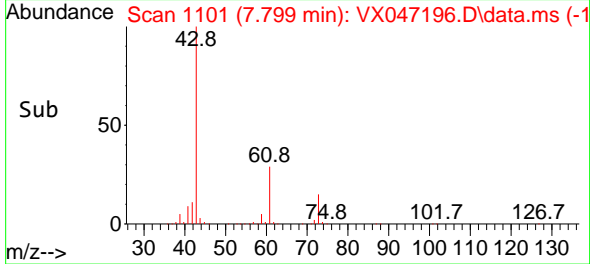


#48  
 Methyl methacrylate  
 Concen: 26.195 ug/l  
 RT: 7.799 min Scan# 1101  
 Delta R.T. 0.104 min  
 Lab File: VX047196.D  
 Acq: 31 Jul 2025 12:18

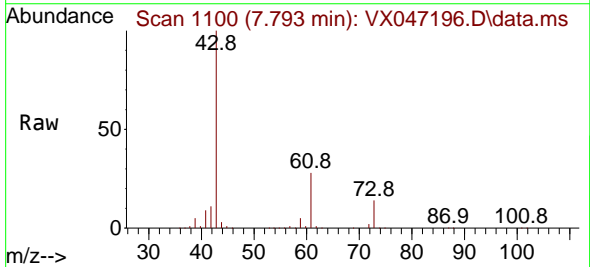
Instrument : MSVOA\_X  
 ClientSampleId : 7211931-VNJ240



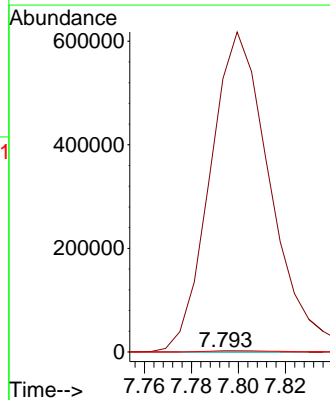
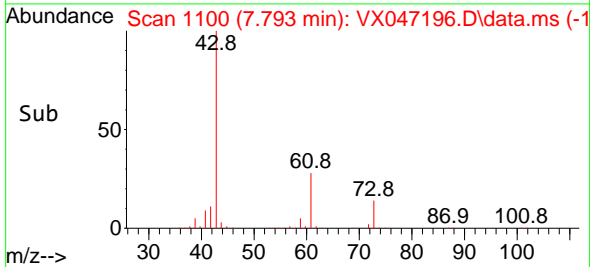
Tgt Ion: 41 Resp: 106440  
 Ion Ratio Lower Upper  
 41 100  
 69 0.1 62.3 93.5#  
 39 53.0 44.8 67.2

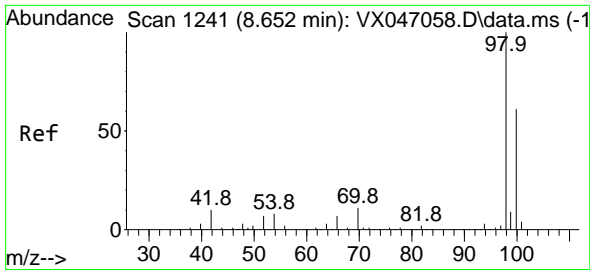


#49  
 1,4-Dioxane  
 Concen: 4.825 ug/l  
 RT: 7.793 min Scan# 1100  
 Delta R.T. 0.135 min  
 Lab File: VX047196.D  
 Acq: 31 Jul 2025 12:18



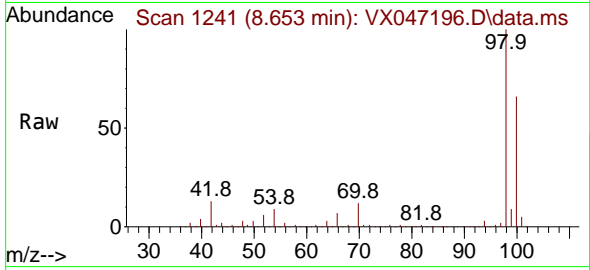
Tgt Ion: 88 Resp: 223  
 Ion Ratio Lower Upper  
 88 100  
 43 510243.9 33.6 50.4#  
 58 2330.9 58.8 88.2#



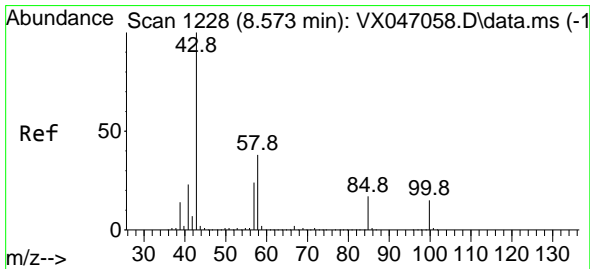
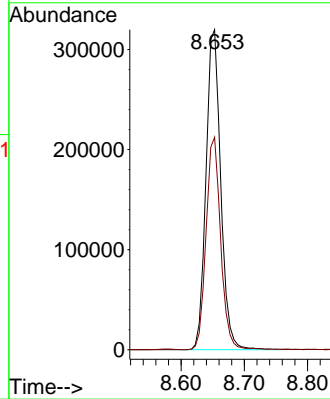
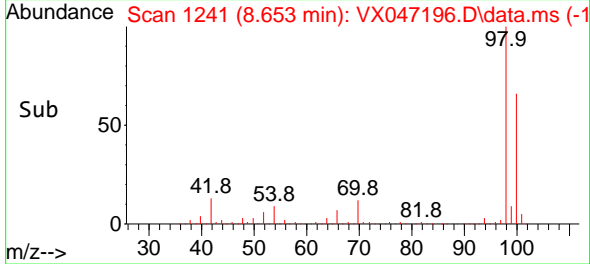


#50  
 Toluene-d8  
 Concen: 52.625 ug/l  
 RT: 8.653 min Scan# 11  
 Delta R.T. 0.000 min  
 Lab File: VX047196.D  
 Acq: 31 Jul 2025 12:18

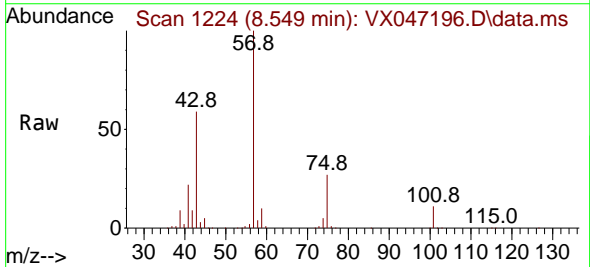
Instrument :  
 MSVOA\_X  
 ClientSampleId :  
 7211931-VNJ240



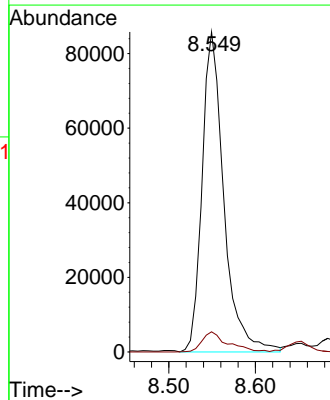
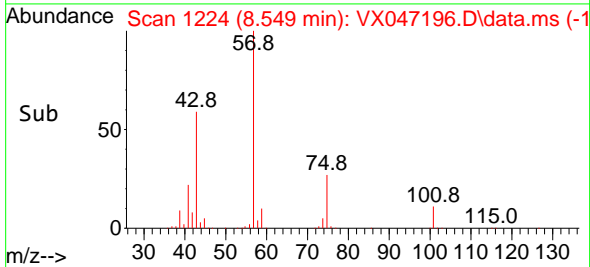
Tgt Ion: 98 Resp: 519133  
 Ion Ratio Lower Upper  
 98 100  
 100 65.9 53.3 79.9

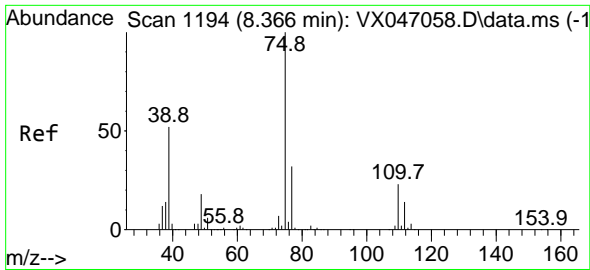


#51  
 4-Methyl-2-Pentanone  
 Concen: 33.765 ug/l  
 RT: 8.549 min Scan# 1224  
 Delta R.T. -0.024 min  
 Lab File: VX047196.D  
 Acq: 31 Jul 2025 12:18



Tgt Ion: 43 Resp: 149698  
 Ion Ratio Lower Upper  
 43 100  
 58 7.5 30.6 45.8#

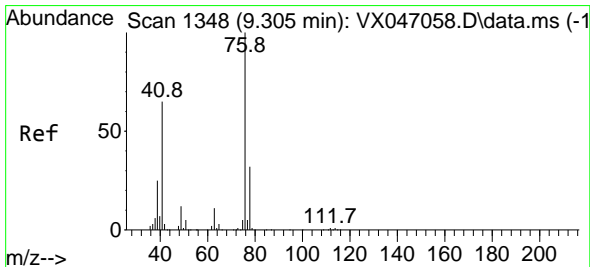
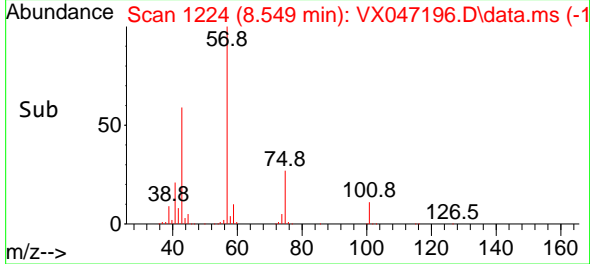
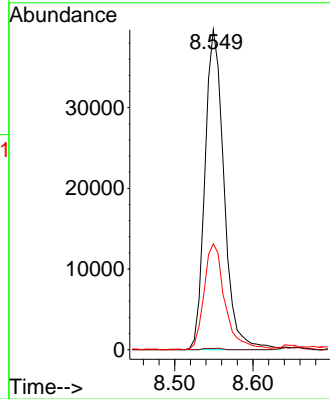
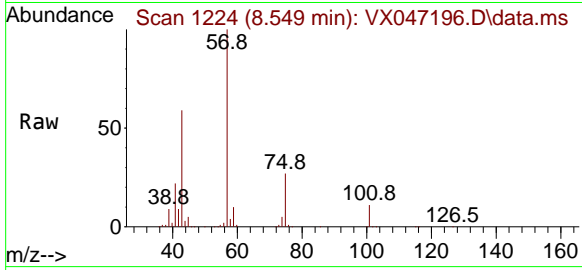




#54  
 cis-1,3-Dichloropropene  
 Concen: 11.563 ug/l  
 RT: 8.549 min Scan# 1194  
 Delta R.T. 0.183 min  
 Lab File: VX047196.D  
 Acq: 31 Jul 2025 12:18

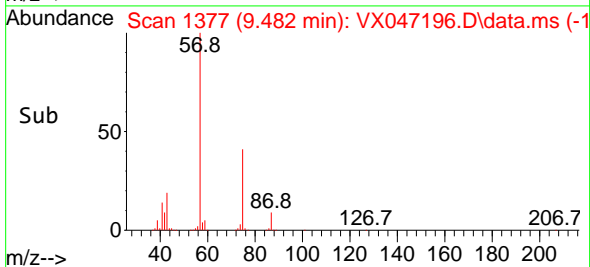
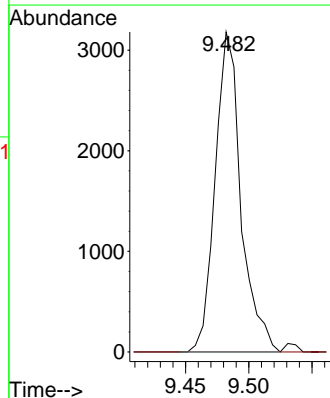
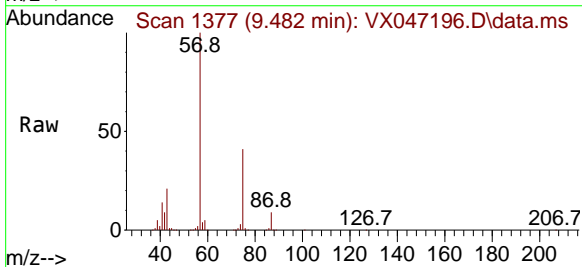
Instrument : MSVOA\_X  
 ClientSampleId : 7211931-VNJ240

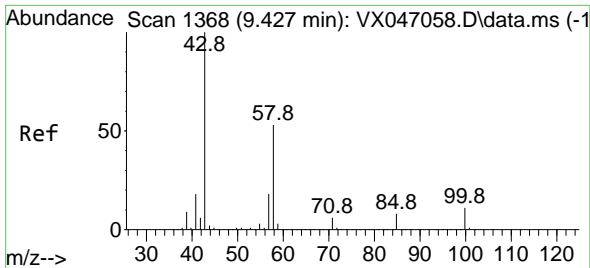
Tgt Ion: 75 Resp: 67134  
 Ion Ratio Lower Upper  
 75 100  
 77 0.4 25.4 38.0#  
 39 32.9 41.8 62.6#



#57  
 1,3-Dichloropropane  
 Concen: 0.748 ug/l  
 RT: 9.482 min Scan# 1377  
 Delta R.T. 0.177 min  
 Lab File: VX047196.D  
 Acq: 31 Jul 2025 12:18

Tgt Ion: 76 Resp: 4502  
 Ion Ratio Lower Upper  
 76 100  
 78 0.0 25.5 38.3#

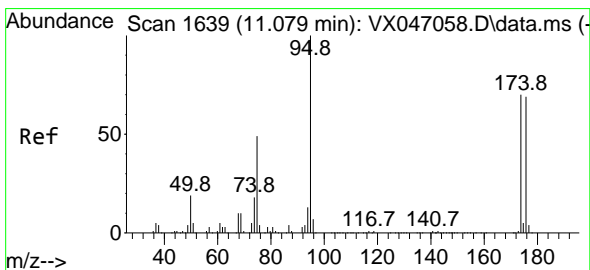
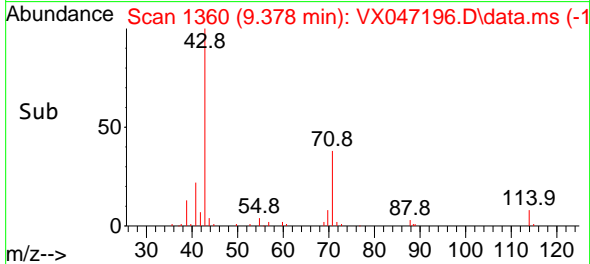
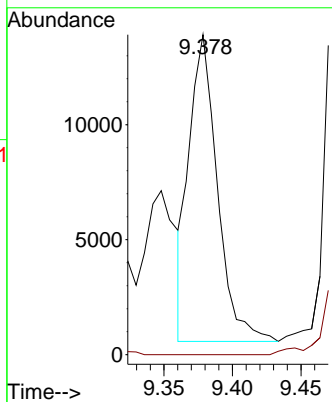
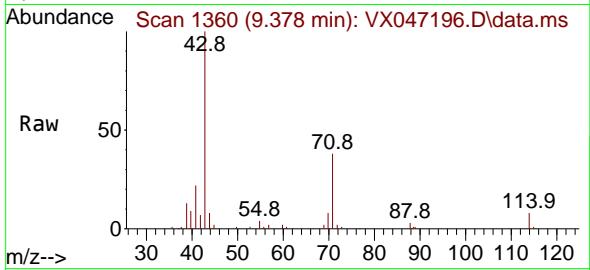




#59  
 2-Hexanone  
 Concen: 6.518 ug/l  
 RT: 9.378 min Scan# 1360  
 Delta R.T. -0.048 min  
 Lab File: VX047196.D  
 Acq: 31 Jul 2025 12:18

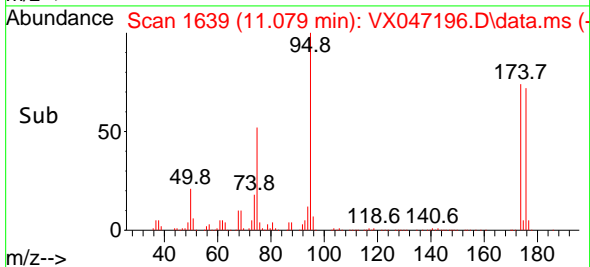
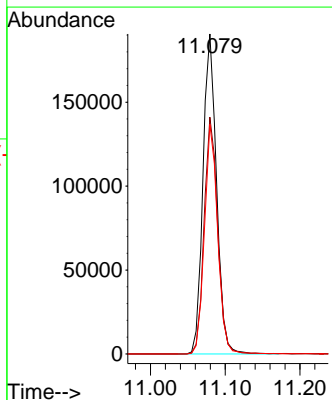
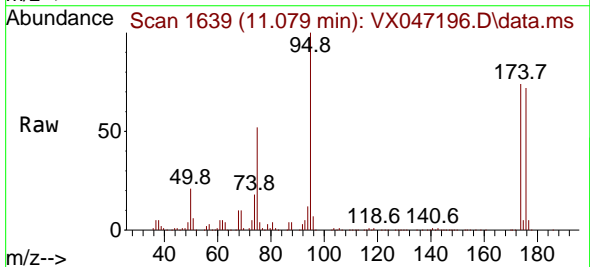
Instrument : MSVOA\_X  
 ClientSampleId : 7211931-VNJ240

Tgt Ion: 43 Resp: 19092  
 Ion Ratio Lower Upper  
 43 100  
 58 0.0 26.5 79.5#

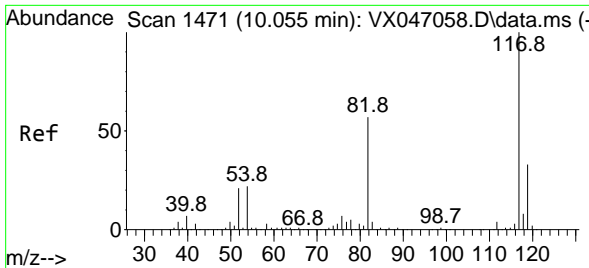


#62  
 4-Bromofluorobenzene  
 Concen: 56.506 ug/l  
 RT: 11.079 min Scan# 1639  
 Delta R.T. 0.000 min  
 Lab File: VX047196.D  
 Acq: 31 Jul 2025 12:18

Tgt Ion: 95 Resp: 240214  
 Ion Ratio Lower Upper  
 95 100  
 174 74.1 0.0 144.6  
 176 70.0 0.0 139.6





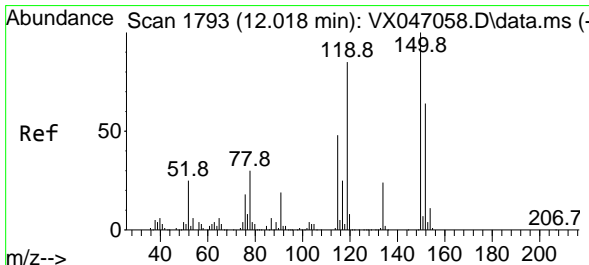
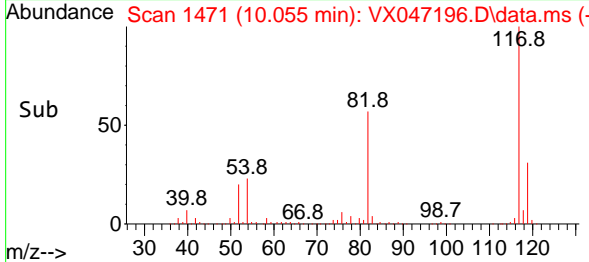
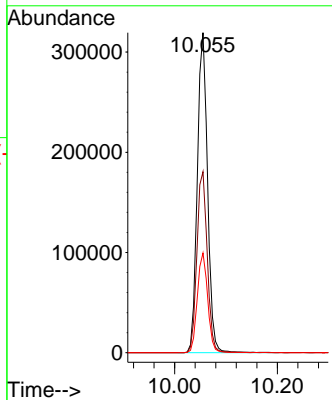
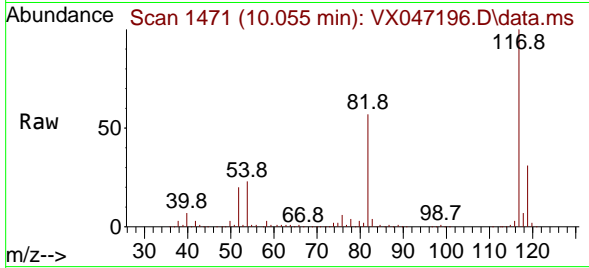


#63  
 Chlorobenzene-d5  
 Concen: 50.000 ug/l  
 RT: 10.055 min Scan# 14  
 Delta R.T. 0.000 min  
 Lab File: VX047196.D  
 Acq: 31 Jul 2025 12:18

Instrument :  
 MSVOA\_X  
 ClientSampleId :  
 7211931-VNJ240

Tgt Ion:117 Resp: 440073

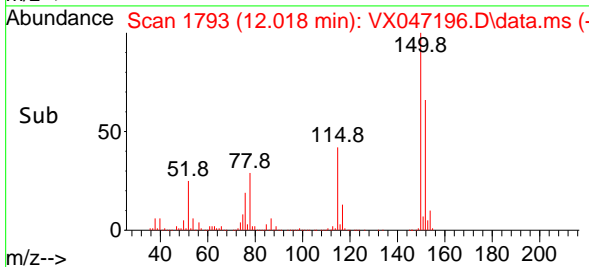
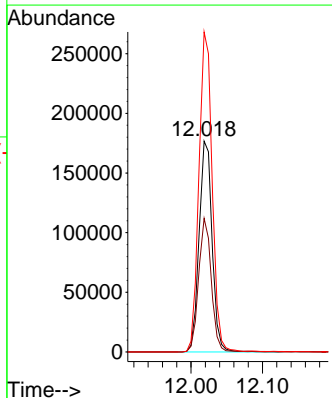
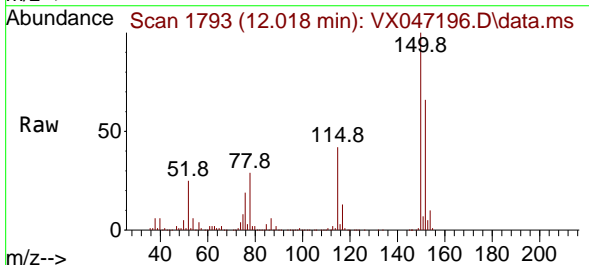
Ion	Ratio	Lower	Upper
117	100		
82	56.6	45.4	68.2
119	31.2	26.1	39.1

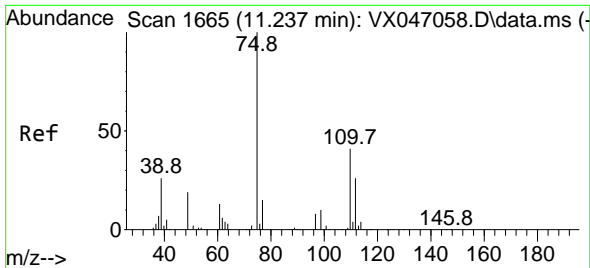


#72  
 1,4-Dichlorobenzene-d4  
 Concen: 50.000 ug/l  
 RT: 12.018 min Scan# 1793  
 Delta R.T. 0.000 min  
 Lab File: VX047196.D  
 Acq: 31 Jul 2025 12:18

Tgt Ion:152 Resp: 223625

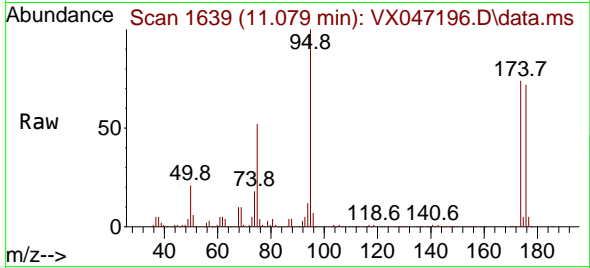
Ion	Ratio	Lower	Upper
152	100		
115	61.6	45.6	136.7
150	153.9	0.0	354.6



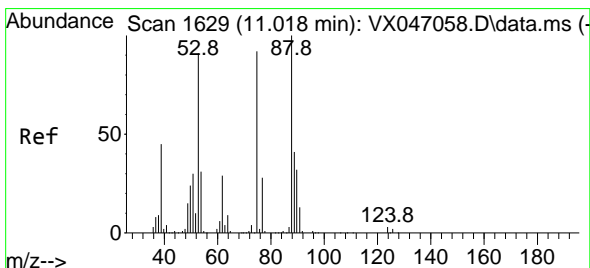
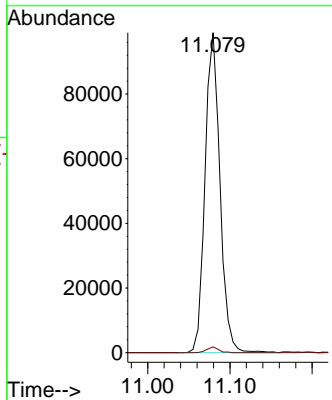
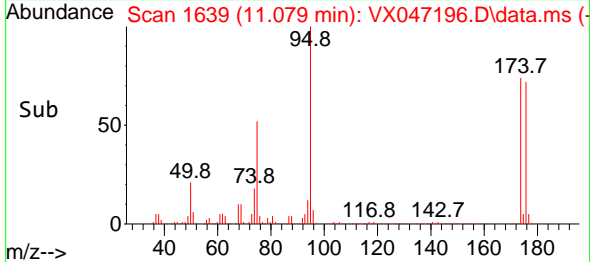


#76  
 1,2,3-Trichloropropane  
 Concen: 30.117 ug/l  
 RT: 11.079 min Scan# 1639  
 Delta R.T. -0.158 min  
 Lab File: VX047196.D  
 Acq: 31 Jul 2025 12:18

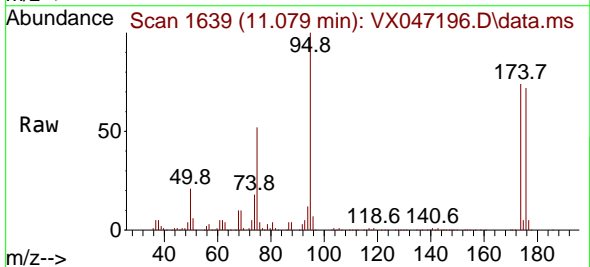
Instrument : MSVOA\_X  
 ClientSampleId : 7211931-VNJ240



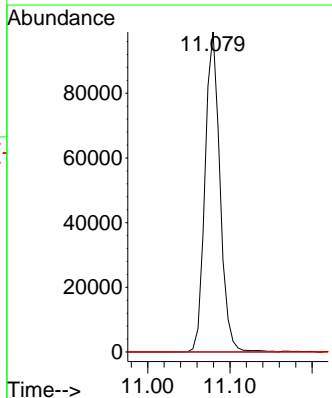
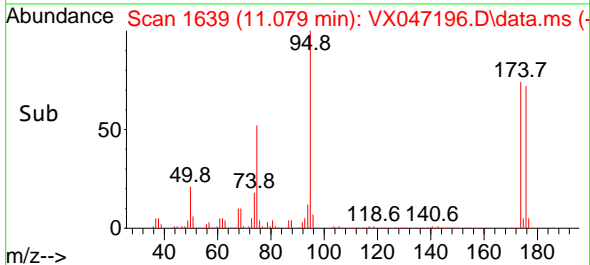
Tgt Ion: 75 Resp: 124660  
 Ion Ratio Lower Upper  
 75 100  
 77 1.4 21.6 65.0#

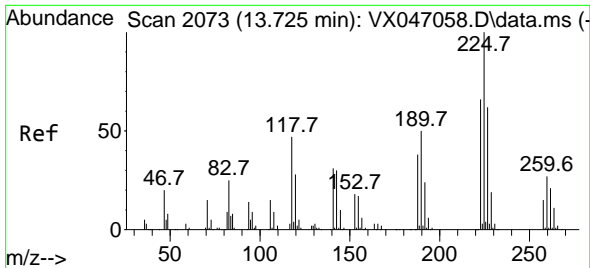


#81  
 trans-1,4-Dichloro-2-butene  
 Concen: 77.593 ug/l  
 RT: 11.079 min Scan# 1639  
 Delta R.T. 0.061 min  
 Lab File: VX047196.D  
 Acq: 31 Jul 2025 12:18



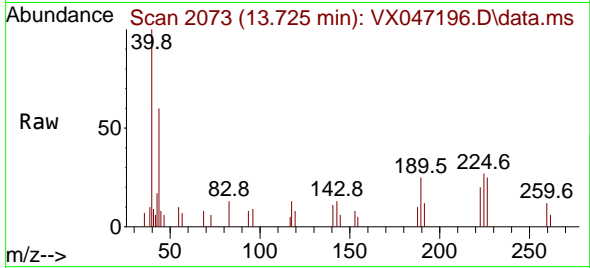
Tgt Ion: 75 Resp: 124660  
 Ion Ratio Lower Upper  
 75 100  
 53 0.0 84.2 126.4#  
 89 0.0 36.0 54.0#





#94  
 Hexachlorobutadiene  
 Concen: 0.282 ug/l  
 RT: 13.725 min Scan# 20  
 Delta R.T. 0.000 min  
 Lab File: VX047196.D  
 Acq: 31 Jul 2025 12:18

Instrument :  
 MSVOA\_X  
 ClientSampleId :  
 7211931-VNJ240



Tgt Ion: 225 Resp: 487

Ion	Ratio	Lower	Upper
225	100		
223	59.3	31.6	95.0
227	48.5	32.9	98.6

