

Data Path : Z:\voasrv\HPCHEM1\MSVOA_X\Data\VX080125\
 Data File : VX047204.D
 Acq On : 01 Aug 2025 13:07
 Operator : JC/MD
 Sample : VX0801WBL01
 Misc : 5.0mL/MSVOA_X/WATER
 ALS Vial : 4 Sample Multiplier: 1

Instrument :
 MSVOA_X
 ClientSampleId :

Quant Time: Aug 02 00:24:26 2025
 Quant Method : Z:\voasrv\HPCHEM1\MSVOA_X\Method\82X072125W.M
 Quant Title : SW846 8260
 QLast Update : Tue Jul 22 03:59:51 2025
 Response via : Initial Calibration

Compound	R.T.	QIon	Response	Conc	Units	Dev(Min)

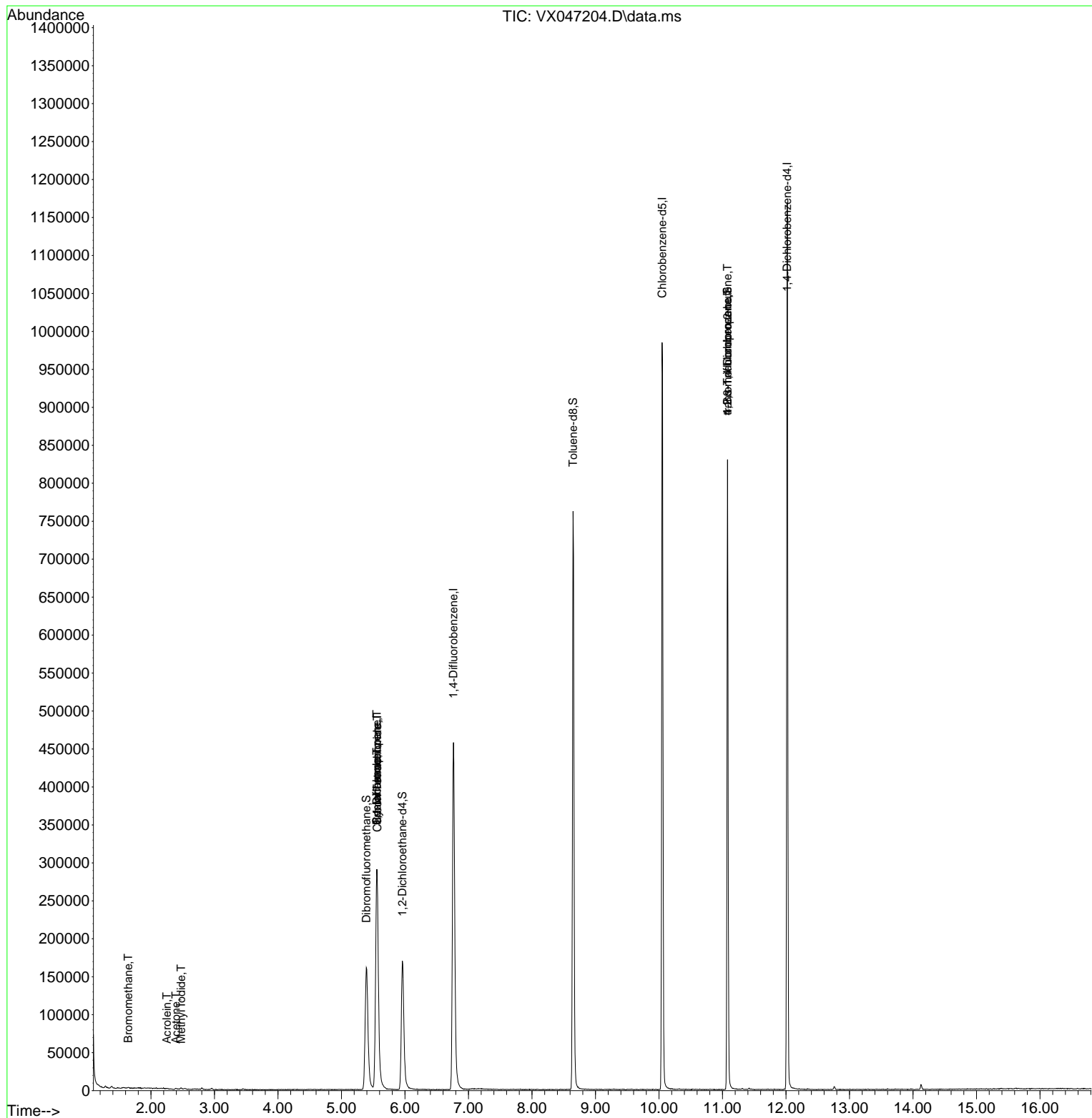
Internal Standards						
1) Pentafluorobenzene	5.556	168	289784	50.000	ug/l	0.00
34) 1,4-Difluorobenzene	6.763	114	493740	50.000	ug/l	0.00
63) Chlorobenzene-d5	10.049	117	446060	50.000	ug/l	0.00
72) 1,4-Dichlorobenzene-d4	12.018	152	227682	50.000	ug/l	0.00
System Monitoring Compounds						
33) 1,2-Dichloroethane-d4	5.958	65	181273	50.217	ug/l	0.00
Spiked Amount	50.000	Range 78 - 117	Recovery	=	100.440%	
35) Dibromofluoromethane	5.391	113	153876	50.476	ug/l	0.00
Spiked Amount	50.000	Range 75 - 124	Recovery	=	100.960%	
50) Toluene-d8	8.647	98	466095	47.211	ug/l	0.00
Spiked Amount	50.000	Range 92 - 112	Recovery	=	94.420%	
62) 4-Bromofluorobenzene	11.079	95	217133	51.036	ug/l	0.00
Spiked Amount	50.000	Range 83 - 123	Recovery	=	102.080%	
Target Compounds						
					Qvalue	
5) Bromomethane	1.642	94	596	0.268	ug/l #	67
10) Methyl Iodide	2.477	142	2883	0.769	ug/l #	89
11) Tert butyl alcohol	2.953	59	46	Below Cal	#	72
13) Acrolein	2.252	56	161	0.207	ug/l #	59
16) Acetone	2.392	43	1722	1.191	ug/l #	86
31) Cyclohexane	5.556	56	6630	0.982	ug/l #	16
36) 1,1-Dichloropropene	5.556	75	24885	4.789	ug/l #	50
38) Carbon Tetrachloride	5.562	117	31780	5.730	ug/l #	15
76) 1,2,3-Trichloropropane	11.079	75	112996	26.813	ug/l #	35
81) trans-1,4-Dichloro-2-b...	11.079	75	112996	69.080	ug/l #	8

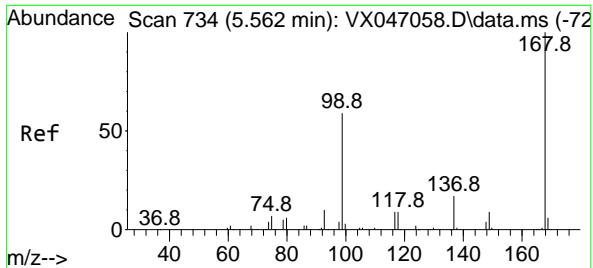
(#) = qualifier out of range (m) = manual integration (+) = signals summed

Data Path : Z:\voasrv\HPCHEM1\MSVOA_X\Data\VX080125\
 Data File : VX047204.D
 Acq On : 01 Aug 2025 13:07
 Operator : JC/MD
 Sample : VX0801WBL01
 Misc : 5.0mL/MSVOA_X/WATER
 ALS Vial : 4 Sample Multiplier: 1

Instrument :
 MSVOA_X
 ClientSampleId :

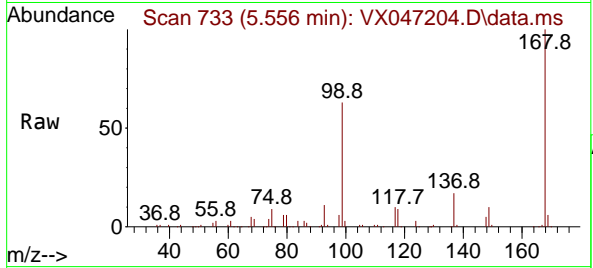
Quant Time: Aug 02 00:24:26 2025
 Quant Method : Z:\voasrv\HPCHEM1\MSVOA_X\Method\82X072125W.M
 Quant Title : SW846 8260
 QLast Update : Tue Jul 22 03:59:51 2025
 Response via : Initial Calibration



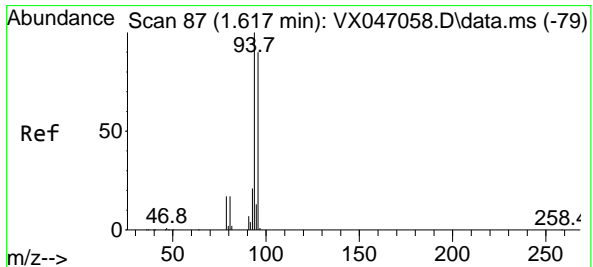
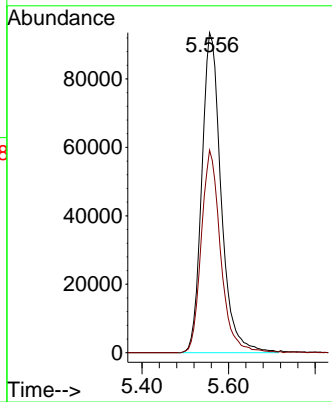
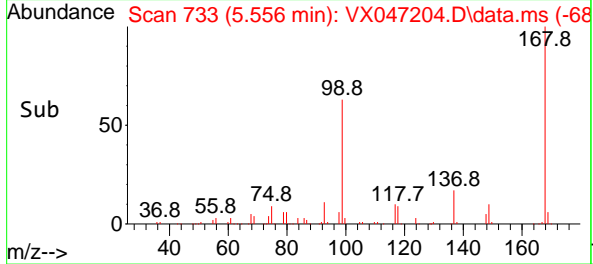


#1
 Pentafluorobenzene
 Concen: 50.000 ug/l
 RT: 5.556 min Scan# 71
 Delta R.T. -0.006 min
 Lab File: VX047204.D
 Acq: 01 Aug 2025 13:07

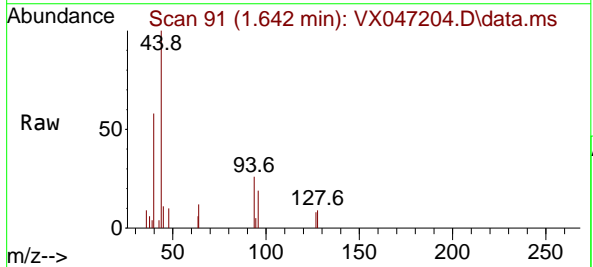
Instrument :
 MSVOA_X
 ClientSampled :



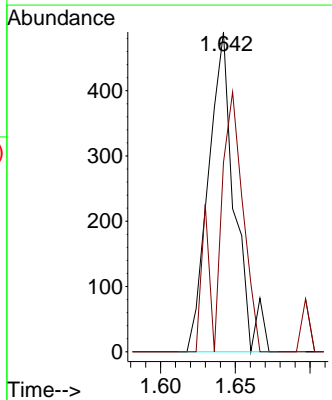
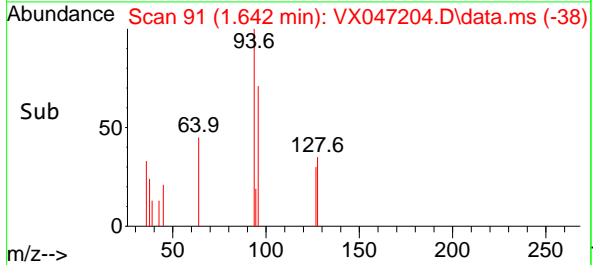
Tgt Ion:168 Resp: 289784
 Ion Ratio Lower Upper
 168 100
 99 63.3 48.0 72.0

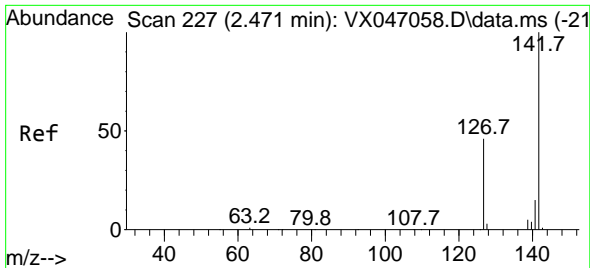


#5
 Bromomethane
 Concen: 0.268 ug/l
 RT: 1.642 min Scan# 91
 Delta R.T. 0.025 min
 Lab File: VX047204.D
 Acq: 01 Aug 2025 13:07



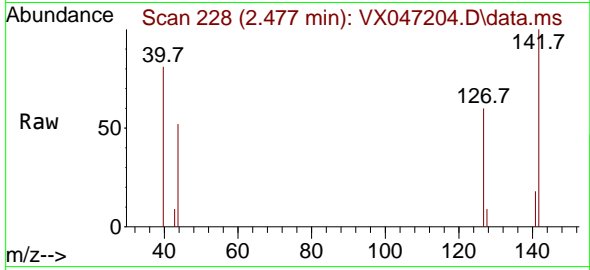
Tgt Ion: 94 Resp: 596
 Ion Ratio Lower Upper
 94 100
 96 59.2 72.3 108.5#



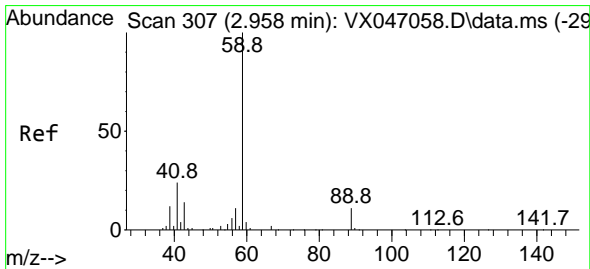
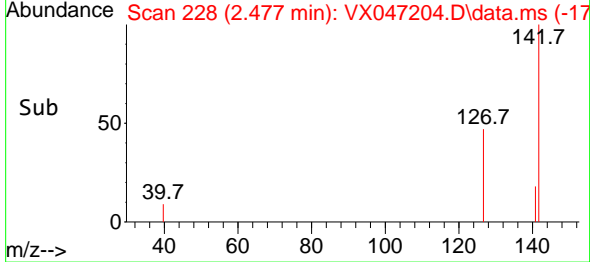
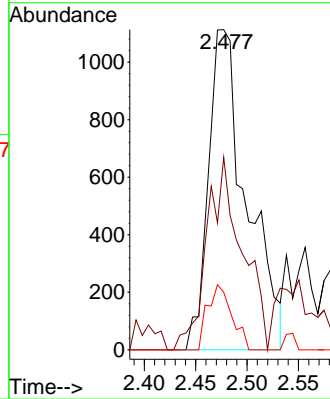


#10
Methyl Iodide
Concen: 0.769 ug/l
RT: 2.477 min Scan# 21
Delta R.T. 0.007 min
Lab File: VX047204.D
Acq: 01 Aug 2025 13:07

Instrument : MSVOA_X
ClientSampleId :

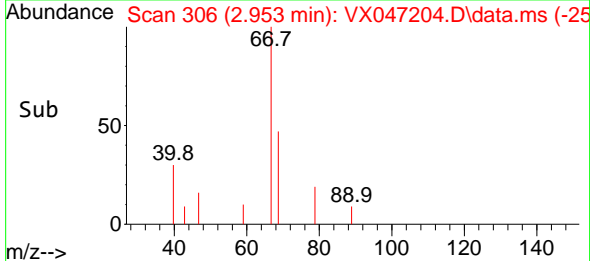
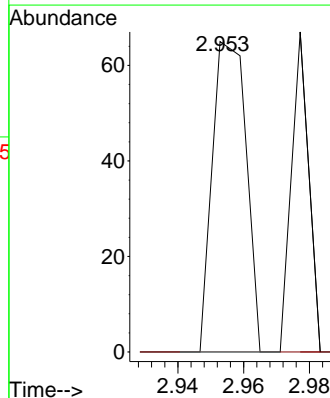
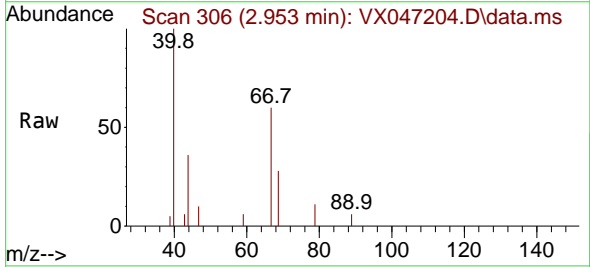


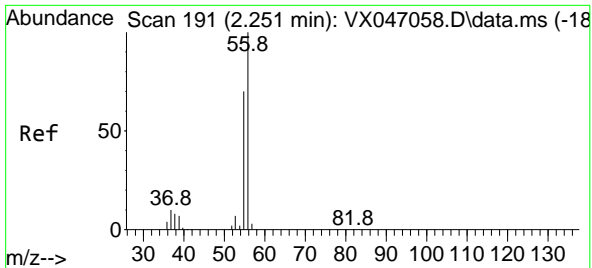
Tgt Ion:142 Resp: 2883
Ion Ratio Lower Upper
142 100
127 55.0 36.6 54.8#
141 12.9 10.9 16.3



#11
Tert butyl alcohol
Concen: Below Cal
RT: 2.953 min Scan# 306
Delta R.T. -0.005 min
Lab File: VX047204.D
Acq: 01 Aug 2025 13:07

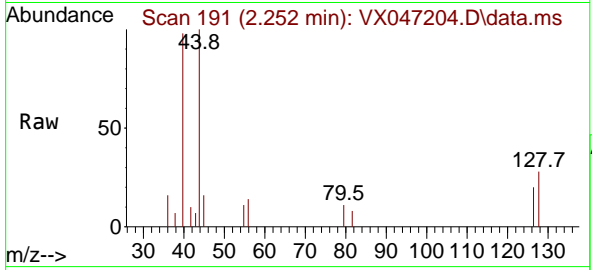
Tgt Ion: 59 Resp: 46
Ion Ratio Lower Upper
59 100
57 0.0 8.5 12.7#



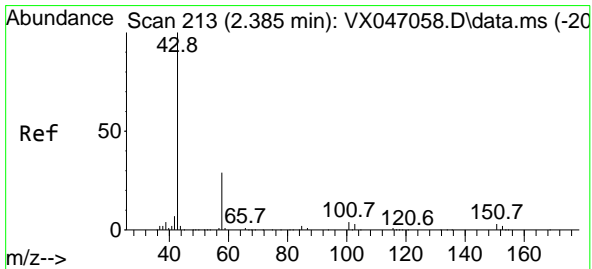
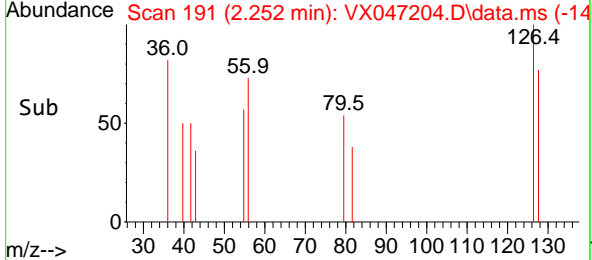
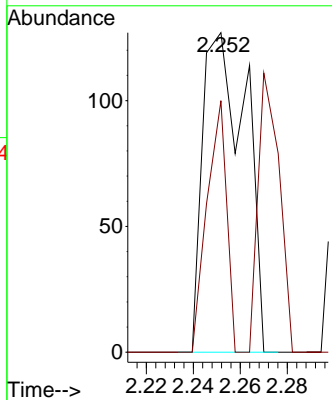


#13
 Acrolein
 Concen: 0.207 ug/l
 RT: 2.252 min Scan# 14
 Delta R.T. 0.001 min
 Lab File: VX047204.D
 Acq: 01 Aug 2025 13:07

Instrument :
 MSVOA_X
 ClientSampleId :

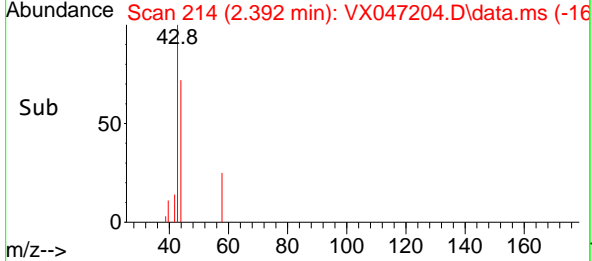
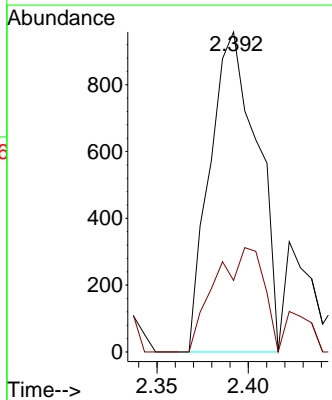
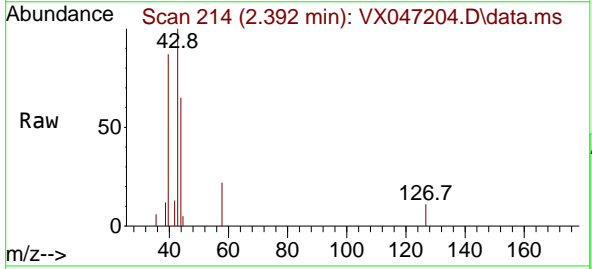


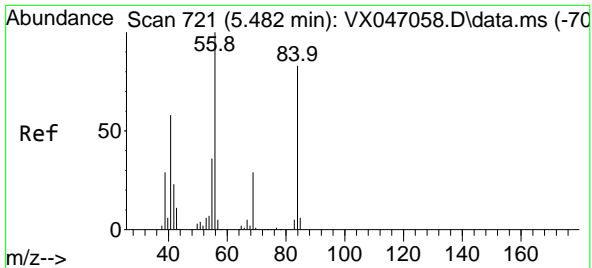
Tgt Ion: 56 Resp: 161
 Ion Ratio Lower Upper
 56 100
 55 36.0 55.7 83.5#



#16
 Acetone
 Concen: 1.191 ug/l
 RT: 2.392 min Scan# 214
 Delta R.T. 0.007 min
 Lab File: VX047204.D
 Acq: 01 Aug 2025 13:07

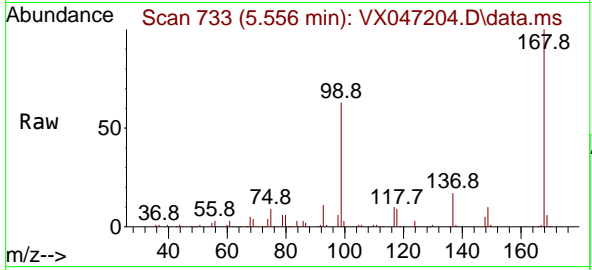
Tgt Ion: 43 Resp: 1722
 Ion Ratio Lower Upper
 43 100
 58 22.3 24.0 36.0#



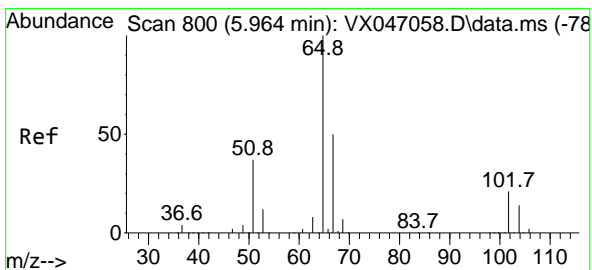
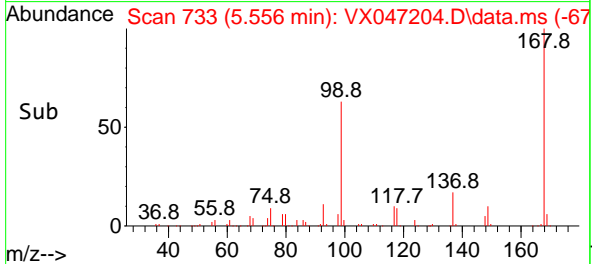
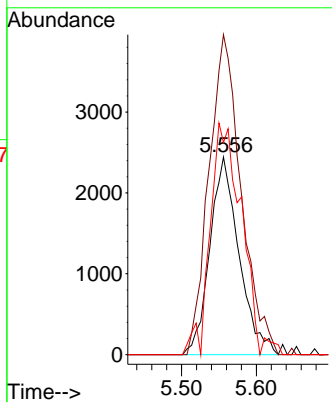


#31
 Cyclohexane
 Concen: 0.982 ug/l
 RT: 5.556 min Scan# 719
 Delta R.T. 0.074 min
 Lab File: VX047204.D
 Acq: 01 Aug 2025 13:07

Instrument :
 MSVOA_X
 ClientSampleId :

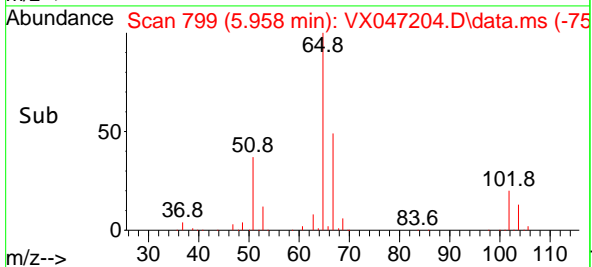
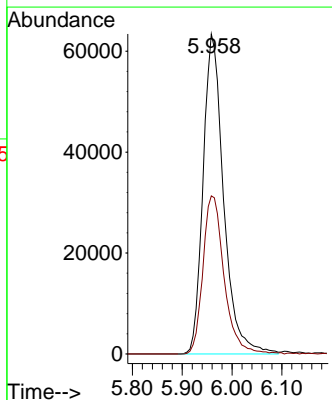
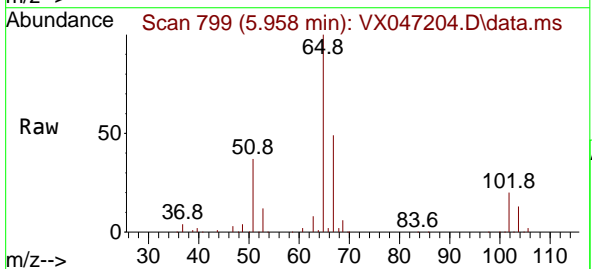


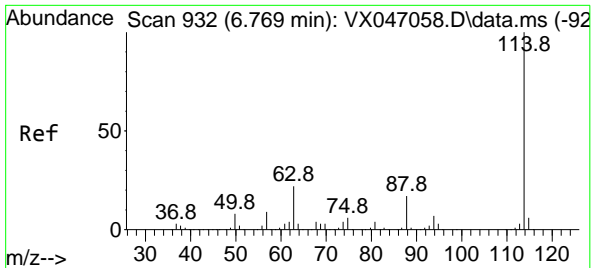
Tgt Ion: 56 Resp: 6630
 Ion Ratio Lower Upper
 56 100
 69 162.0 23.3 34.9#
 84 107.3 66.5 99.7#



#33
 1,2-Dichloroethane-d4
 Concen: 50.217 ug/l
 RT: 5.958 min Scan# 799
 Delta R.T. -0.006 min
 Lab File: VX047204.D
 Acq: 01 Aug 2025 13:07

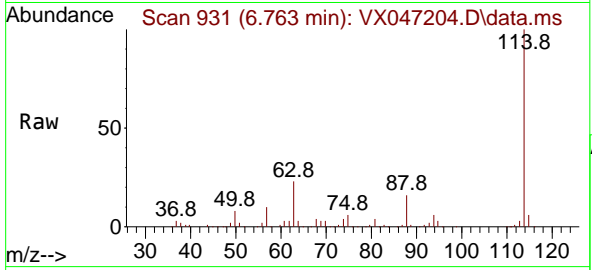
Tgt Ion: 65 Resp: 181273
 Ion Ratio Lower Upper
 65 100
 67 51.0 0.0 104.8



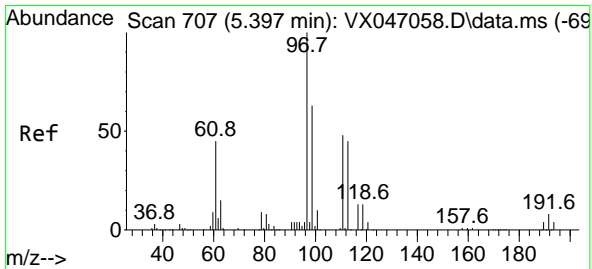
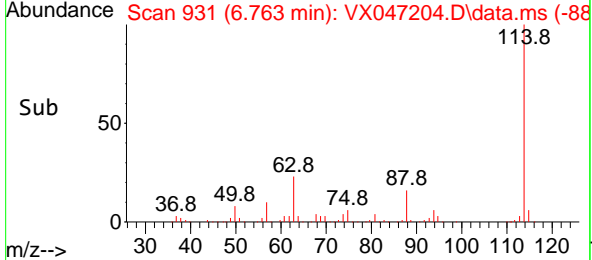
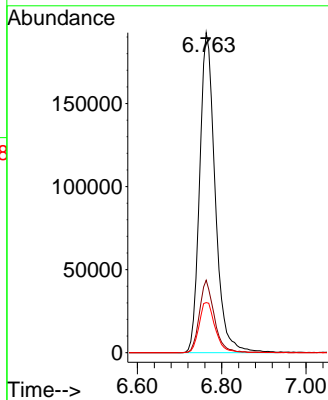


#34
 1,4-Difluorobenzene
 Concen: 50.000 ug/l
 RT: 6.763 min Scan# 911
 Delta R.T. -0.006 min
 Lab File: VX047204.D
 Acq: 01 Aug 2025 13:07

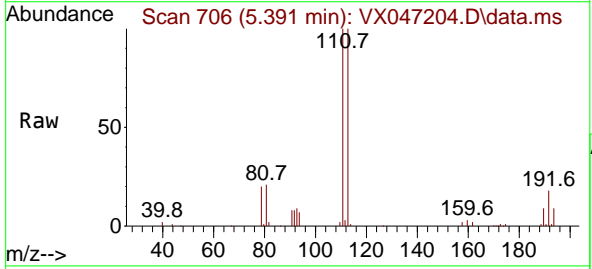
Instrument :
 MSVOA_X
 ClientSampleId :



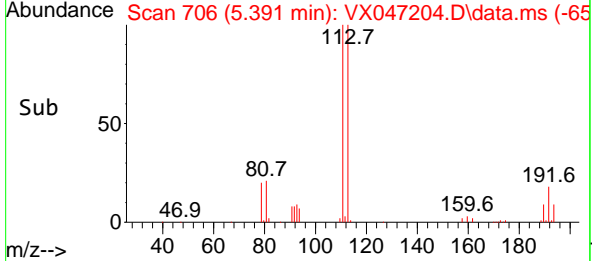
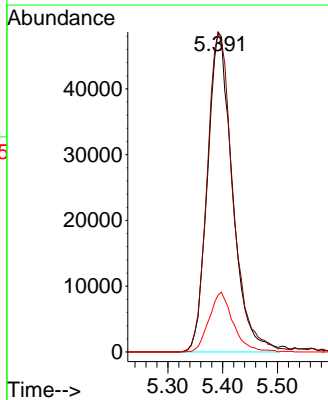
Tgt Ion:114 Resp: 493740
 Ion Ratio Lower Upper
 114 100
 63 22.7 0.0 43.2
 88 15.6 0.0 33.8

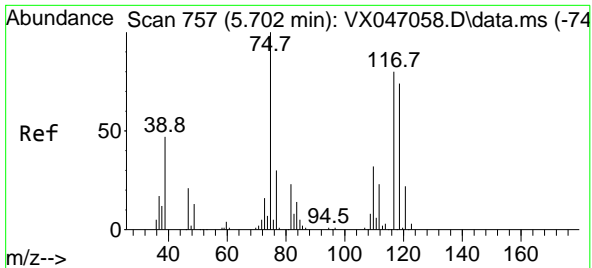


#35
 Dibromofluoromethane
 Concen: 50.476 ug/l
 RT: 5.391 min Scan# 706
 Delta R.T. -0.006 min
 Lab File: VX047204.D
 Acq: 01 Aug 2025 13:07



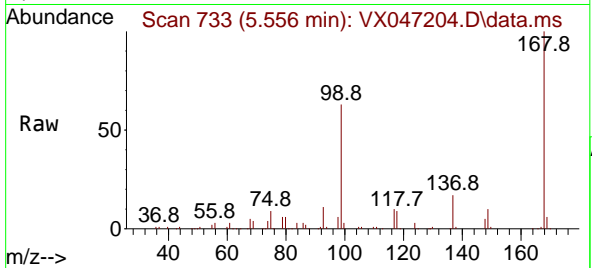
Tgt Ion:113 Resp: 153876
 Ion Ratio Lower Upper
 113 100
 111 102.8 82.6 124.0
 192 18.0 14.9 22.3



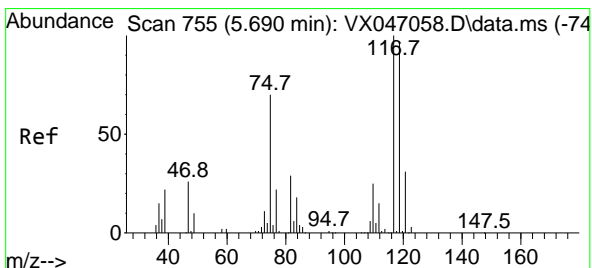
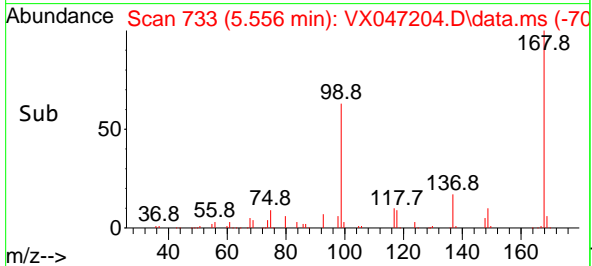
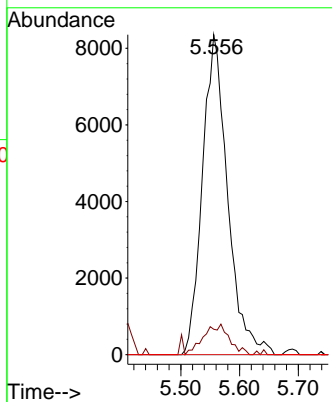


#36
 1,1-Dichloropropene
 Concen: 4.789 ug/l
 RT: 5.556 min Scan# 711
 Delta R.T. -0.146 min
 Lab File: VX047204.D
 Acq: 01 Aug 2025 13:07

Instrument : MSVOA_X
 ClientSampleId :

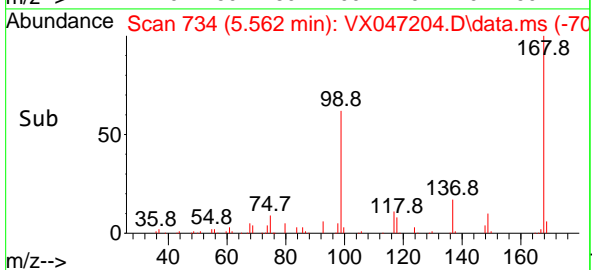
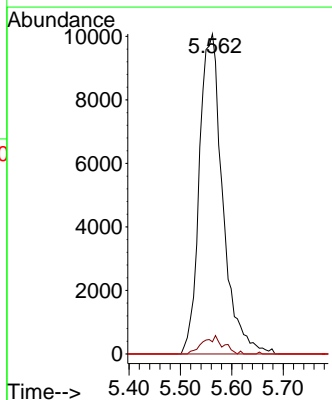
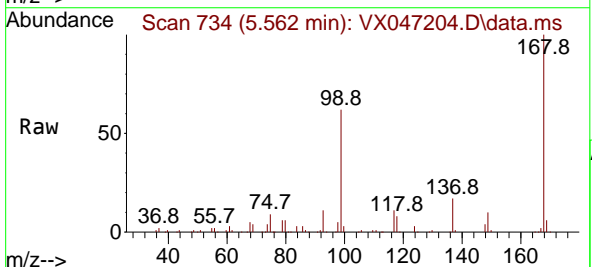


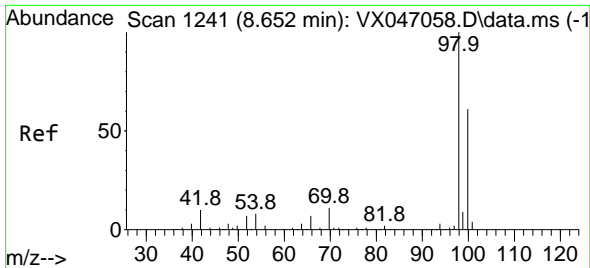
Tgt Ion: 75 Resp: 24885
 Ion Ratio Lower Upper
 75 100
 110 9.6 17.2 51.5#
 77 0.0 25.1 37.7#



#38
 Carbon Tetrachloride
 Concen: 5.730 ug/l
 RT: 5.562 min Scan# 734
 Delta R.T. -0.128 min
 Lab File: VX047204.D
 Acq: 01 Aug 2025 13:07

Tgt Ion: 117 Resp: 31780
 Ion Ratio Lower Upper
 117 100
 119 3.8 76.6 115.0#
 121 0.0 24.4 36.6#

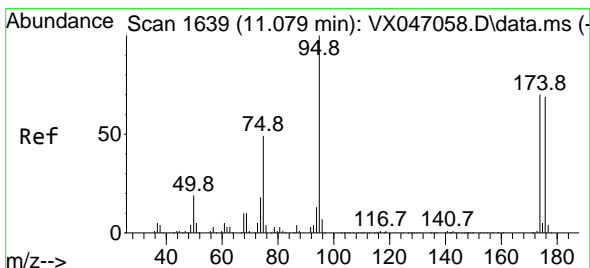
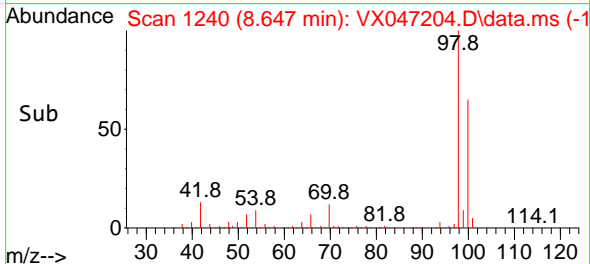
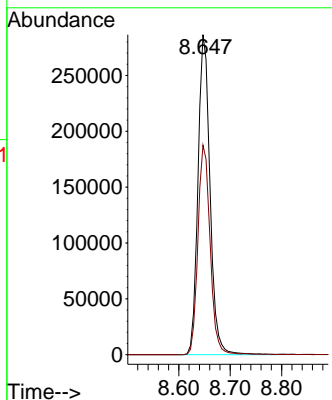
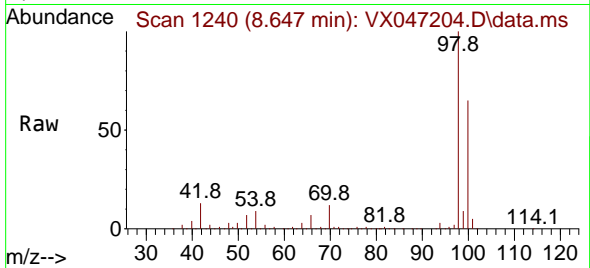




#50
 Toluene-d8
 Concen: 47.211 ug/l
 RT: 8.647 min Scan# 1111
 Delta R.T. -0.006 min
 Lab File: VX047204.D
 Acq: 01 Aug 2025 13:07

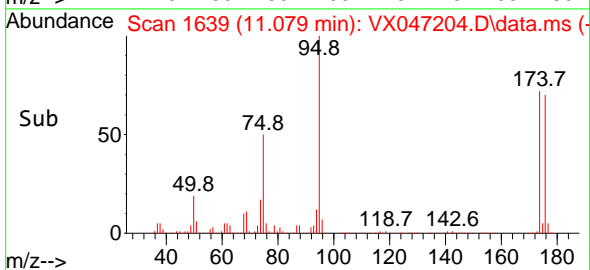
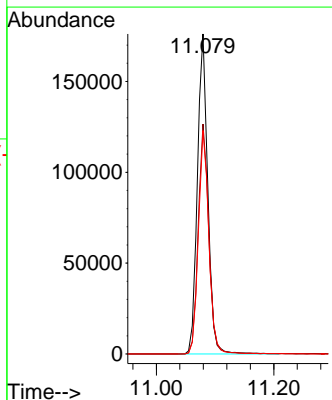
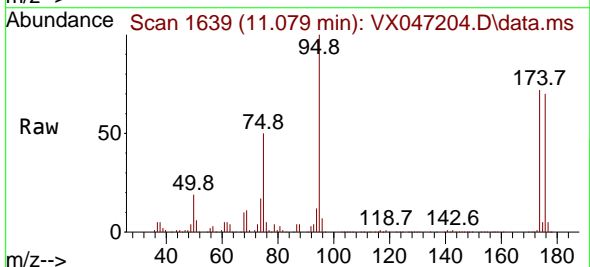
Instrument :
 MSVOA_X
 ClientSampleId :

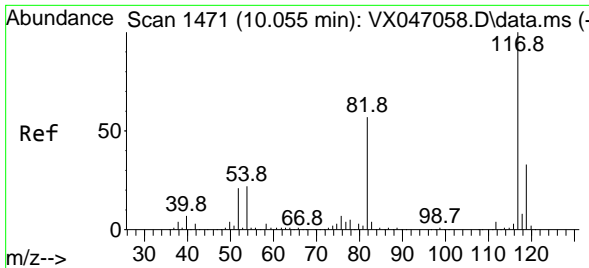
Tgt Ion: 98 Resp: 466095
 Ion Ratio Lower Upper
 98 100
 100 66.5 53.3 79.9



#62
 4-Bromofluorobenzene
 Concen: 51.036 ug/l
 RT: 11.079 min Scan# 1639
 Delta R.T. 0.000 min
 Lab File: VX047204.D
 Acq: 01 Aug 2025 13:07

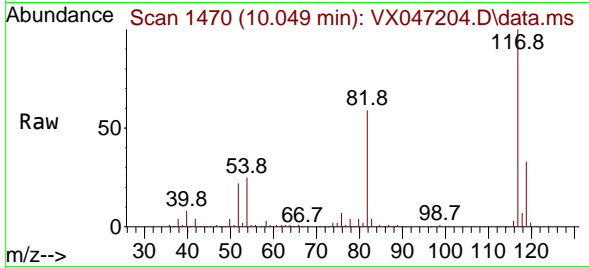
Tgt Ion: 95 Resp: 217133
 Ion Ratio Lower Upper
 95 100
 174 72.5 0.0 144.6
 176 70.1 0.0 139.6



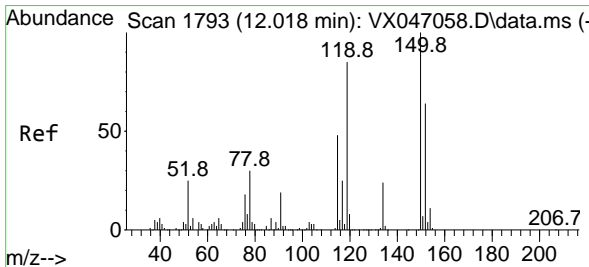
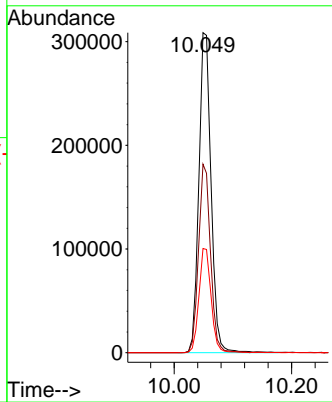
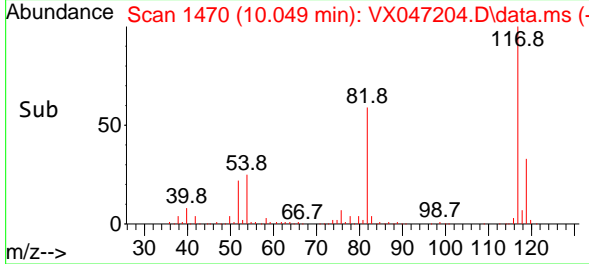


#63
 Chlorobenzene-d5
 Concen: 50.000 ug/l
 RT: 10.049 min Scan# 1470
 Delta R.T. -0.006 min
 Lab File: VX047204.D
 Acq: 01 Aug 2025 13:07

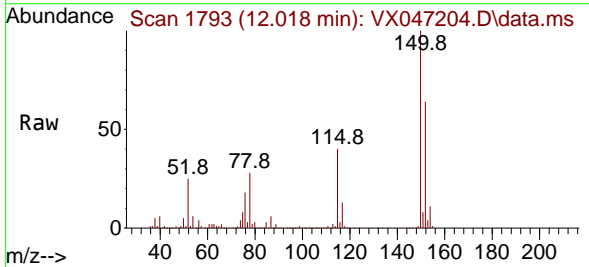
Instrument : MSVOA_X
 ClientSampleId :



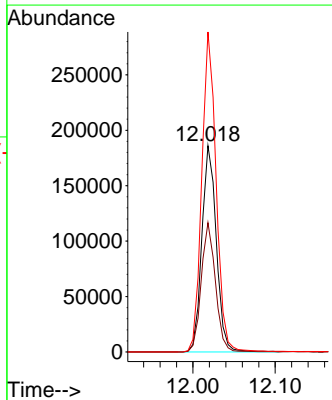
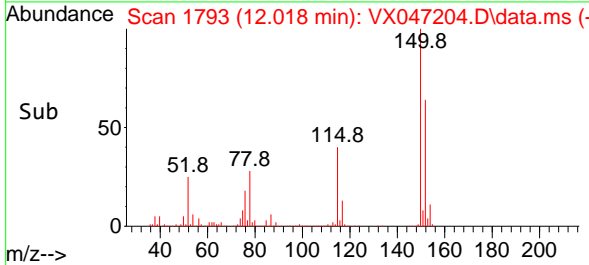
Tgt Ion:117 Resp: 446060
 Ion Ratio Lower Upper
 117 100
 82 58.9 45.4 68.2
 119 32.6 26.1 39.1

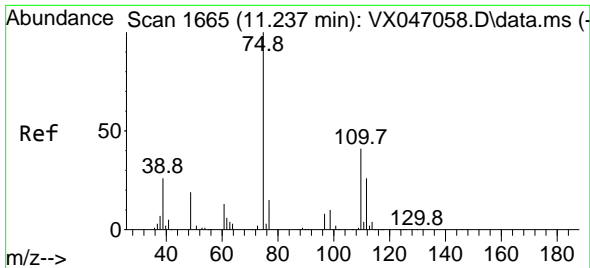


#72
 1,4-Dichlorobenzene-d4
 Concen: 50.000 ug/l
 RT: 12.018 min Scan# 1793
 Delta R.T. 0.001 min
 Lab File: VX047204.D
 Acq: 01 Aug 2025 13:07



Tgt Ion:152 Resp: 227682
 Ion Ratio Lower Upper
 152 100
 115 61.6 45.6 136.7
 150 154.2 0.0 354.6

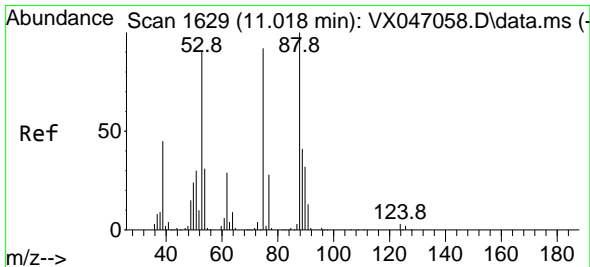
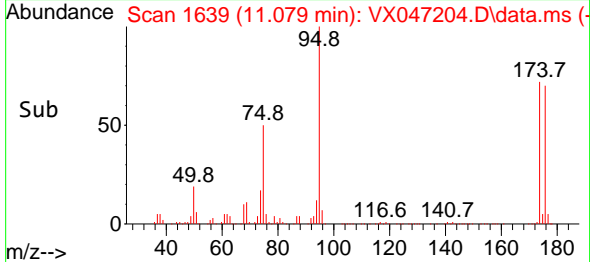
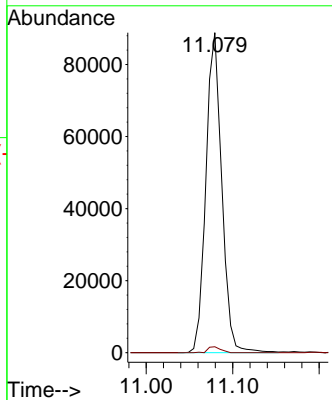
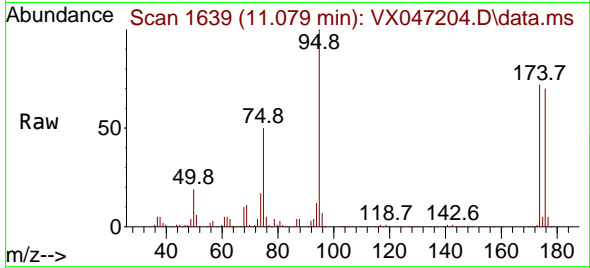




#76
 1,2,3-Trichloropropane
 Concen: 26.813 ug/l
 RT: 11.079 min Scan# 1639
 Delta R.T. -0.158 min
 Lab File: VX047204.D
 Acq: 01 Aug 2025 13:07

Instrument : MSVOA_X
 ClientSampleId :

Tgt Ion: 75 Resp: 112996
 Ion Ratio Lower Upper
 75 100
 77 1.5 21.6 65.0#



#81
 trans-1,4-Dichloro-2-butene
 Concen: 69.080 ug/l
 RT: 11.079 min Scan# 1639
 Delta R.T. 0.061 min
 Lab File: VX047204.D
 Acq: 01 Aug 2025 13:07

Tgt Ion: 75 Resp: 112996
 Ion Ratio Lower Upper
 75 100
 53 0.0 84.2 126.4#
 89 0.0 36.0 54.0#

