

Data Path : Z:\voasrv\HPCHEM1\MSVOA_X\Data\VX080125\
 Data File : VX047207.D
 Acq On : 01 Aug 2025 15:41
 Operator : JC/MD
 Sample : IBLK
 Misc : 5.0mL/MSVOA_X/WATER
 ALS Vial : 7 Sample Multiplier: 1

Instrument :
 MSVOA_X
 ClientSampleId :

Quant Time: Aug 02 00:26:41 2025
 Quant Method : Z:\voasrv\HPCHEM1\MSVOA_X\Method\82X072125W.M
 Quant Title : SW846 8260
 QLast Update : Tue Jul 22 03:59:51 2025
 Response via : Initial Calibration

Compound	R.T.	QIon	Response	Conc	Units	Dev(Min)

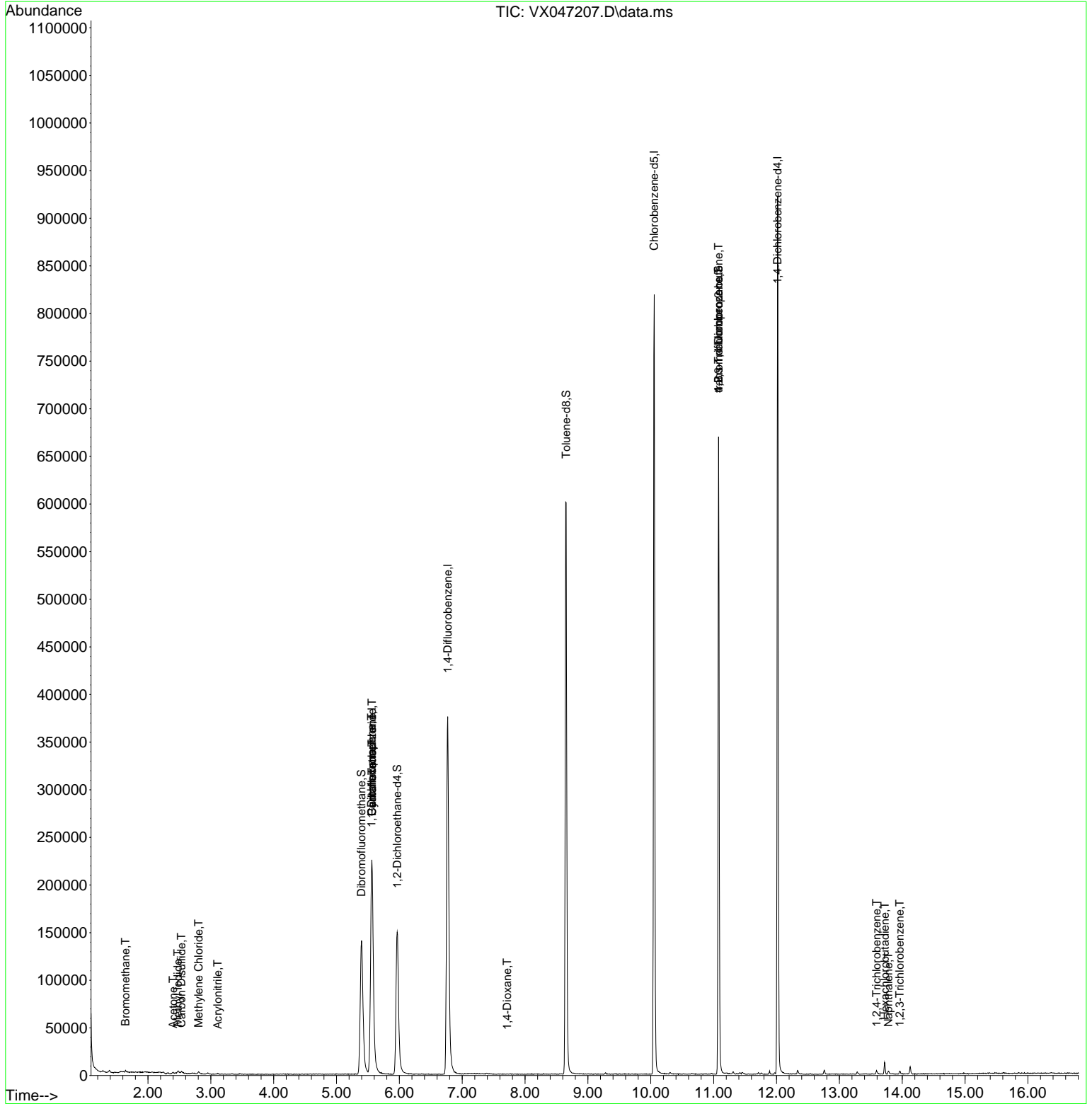
Internal Standards						
1) Pentafluorobenzene	5.562	168	223902	50.000	ug/l	0.00
34) 1,4-Difluorobenzene	6.769	114	403808	50.000	ug/l	0.00
63) Chlorobenzene-d5	10.055	117	367505	50.000	ug/l	0.00
72) 1,4-Dichlorobenzene-d4	12.018	152	182165	50.000	ug/l	0.00
System Monitoring Compounds						
33) 1,2-Dichloroethane-d4	5.964	65	160917	57.695	ug/l	0.00
Spiked Amount	50.000	Range 78 - 117	Recovery	=	115.380%	
35) Dibromofluoromethane	5.397	113	134080	53.777	ug/l	0.00
Spiked Amount	50.000	Range 75 - 124	Recovery	=	107.560%	
50) Toluene-d8	8.653	98	379048	46.945	ug/l	0.00
Spiked Amount	50.000	Range 92 - 112	Recovery	=	93.880%	
62) 4-Bromofluorobenzene	11.079	95	179615	51.620	ug/l	0.00
Spiked Amount	50.000	Range 83 - 123	Recovery	=	103.240%	
Target Compounds						
						Qvalue
5) Bromomethane	1.642	94	1140	0.664	ug/l #	4
10) Methyl Iodide	2.477	142	5043	1.742	ug/l #	86
11) Tert butyl alcohol	2.959	59	152	Below Cal	#	72
15) Acrylonitrile	3.111	53	325	0.244	ug/l #	47
16) Acetone	2.398	43	2083	1.864	ug/l #	88
17) Carbon Disulfide	2.532	76	2164	0.266	ug/l #	91
20) Methylene Chloride	2.806	84	1007	0.328	ug/l #	72
31) Cyclohexane	5.562	56	4919	0.943	ug/l #	1
36) 1,1-Dichloropropene	5.556	75	18587	4.373	ug/l #	51
38) Carbon Tetrachloride	5.562	117	24258	5.348	ug/l #	15
49) 1,4-Dioxane	7.714	88	117	3.093	ug/l #	37
76) 1,2,3-Trichloropropane	11.079	75	93834	27.829	ug/l #	34
81) trans-1,4-Dichloro-2-b...	11.079	75	93834	71.699	ug/l #	8
93) 1,2,4-Trichlorobenzene	13.591	180	1147	0.277	ug/l	91
94) Hexachlorobutadiene	13.725	225	1610	1.145	ug/l	97
95) Naphthalene	13.780	128	2813	0.232	ug/l #	84
96) 1,2,3-Trichlorobenzene	13.963	180	1137	0.285	ug/l	95

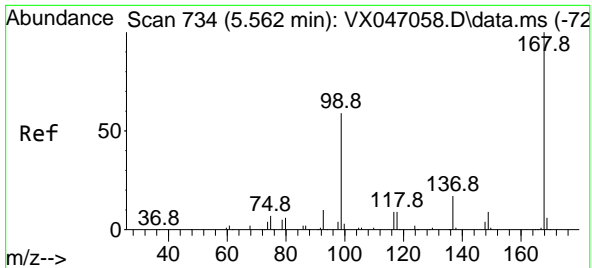
(#) = qualifier out of range (m) = manual integration (+) = signals summed

Data Path : Z:\voasrv\HPCHEM1\MSVOA_X\Data\VX080125\
 Data File : VX047207.D
 Acq On : 01 Aug 2025 15:41
 Operator : JC/MD
 Sample : IBLK
 Misc : 5.0mL/MSVOA_X/WATER
 ALS Vial : 7 Sample Multiplier: 1

Instrument :
 MSVOA_X
 ClientSampleId :

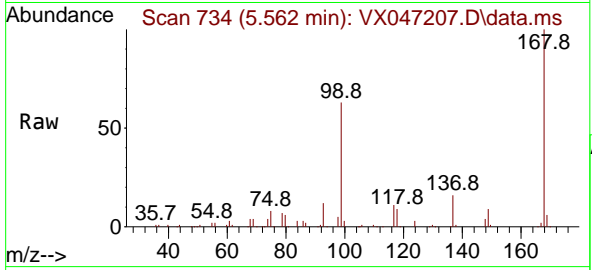
Quant Time: Aug 02 00:26:41 2025
 Quant Method : Z:\voasrv\HPCHEM1\MSVOA_X\Method\82X072125W.M
 Quant Title : SW846 8260
 QLast Update : Tue Jul 22 03:59:51 2025
 Response via : Initial Calibration



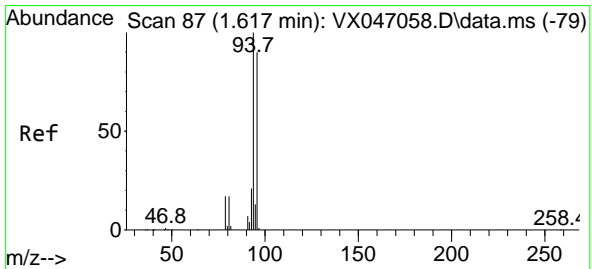
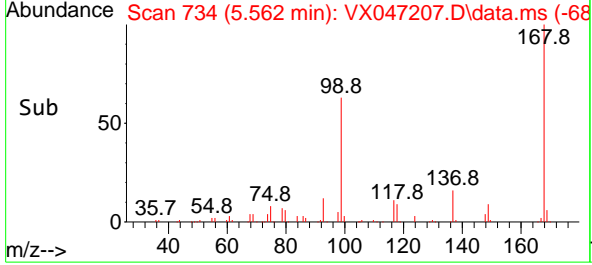
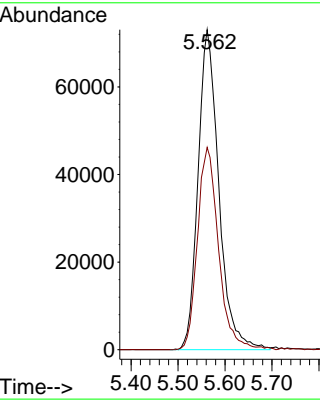


#1
 Pentafluorobenzene
 Concen: 50.000 ug/l
 RT: 5.562 min Scan# 71
 Delta R.T. -0.000 min
 Lab File: VX047207.D
 Acq: 01 Aug 2025 15:41

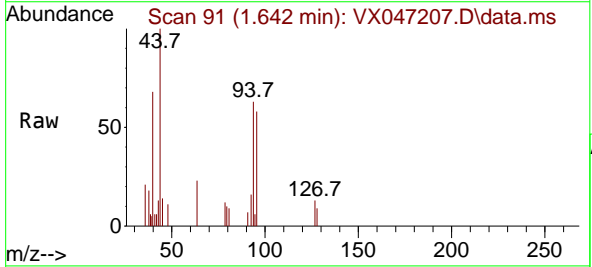
Instrument : MSVOA_X
 ClientSampleId :



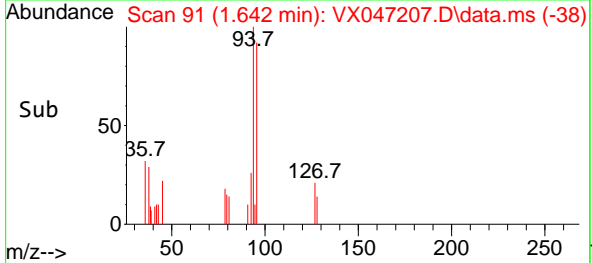
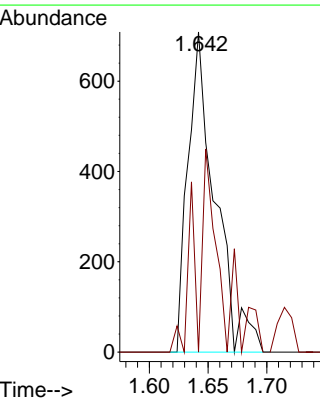
Tgt Ion:168 Resp: 223902
 Ion Ratio Lower Upper
 168 100
 99 63.2 48.0 72.0

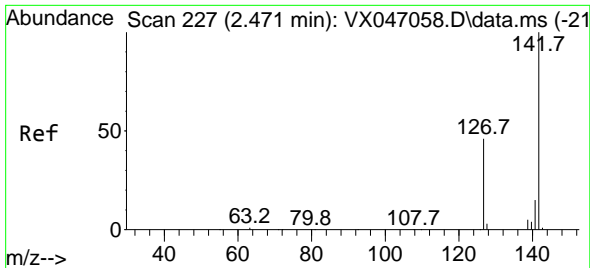


#5
 Bromomethane
 Concen: 0.664 ug/l
 RT: 1.642 min Scan# 91
 Delta R.T. 0.025 min
 Lab File: VX047207.D
 Acq: 01 Aug 2025 15:41



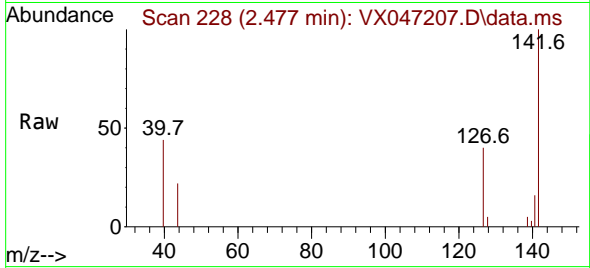
Tgt Ion: 94 Resp: 1140
 Ion Ratio Lower Upper
 94 100
 96 0.0 72.3 108.5#



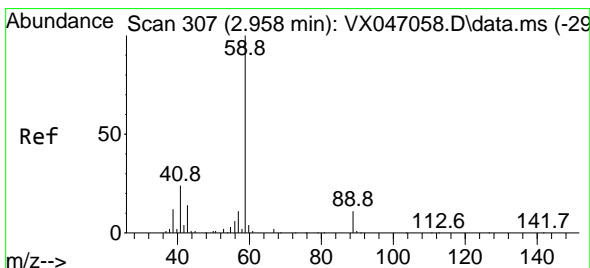
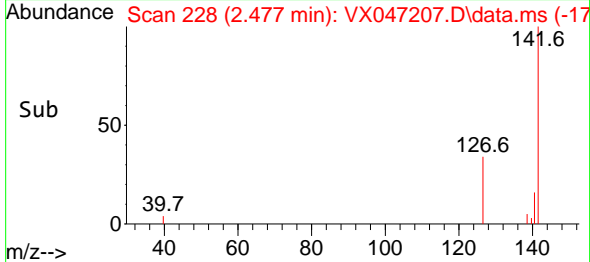
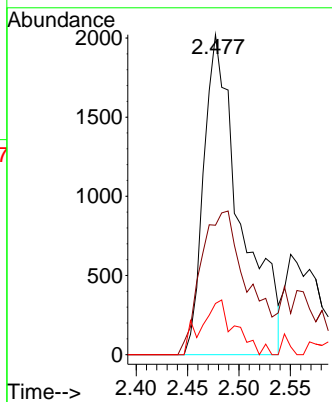


#10
Methyl Iodide
Concen: 1.742 ug/l
RT: 2.477 min Scan# 21
Delta R.T. 0.006 min
Lab File: VX047207.D
Acq: 01 Aug 2025 15:41

Instrument :
MSVOA_X
ClientSampleId :

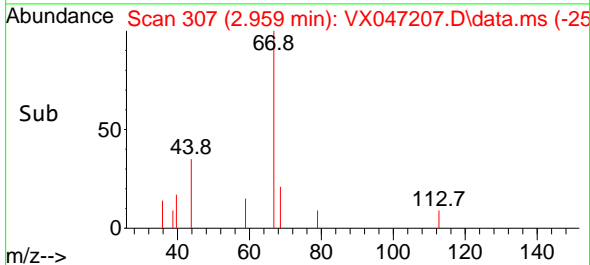
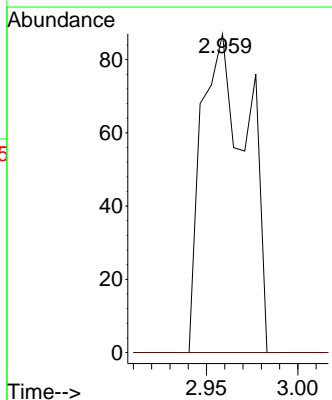
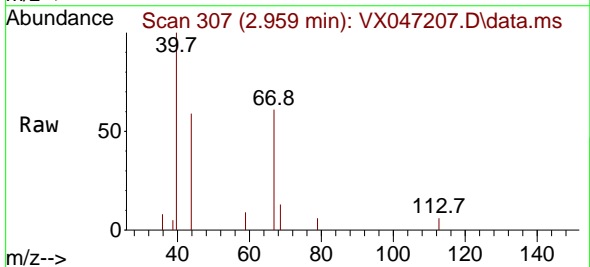


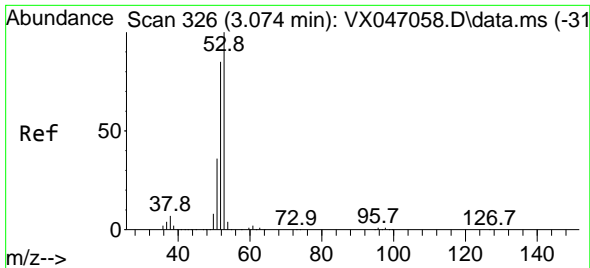
Tgt Ion:142 Resp: 5043
Ion Ratio Lower Upper
142 100
127 56.5 36.6 54.8#
141 15.7 10.9 16.3



#11
Tert butyl alcohol
Concen: Below Cal
RT: 2.959 min Scan# 307
Delta R.T. 0.001 min
Lab File: VX047207.D
Acq: 01 Aug 2025 15:41

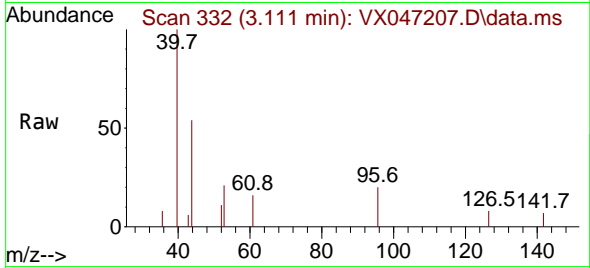
Tgt Ion: 59 Resp: 152
Ion Ratio Lower Upper
59 100
57 0.0 8.5 12.7#



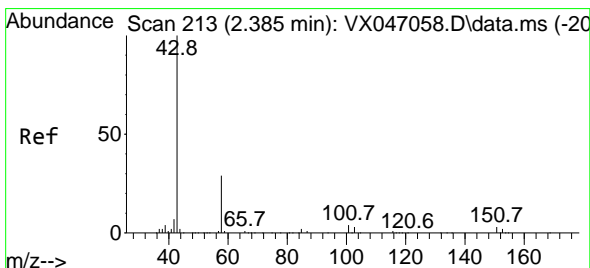
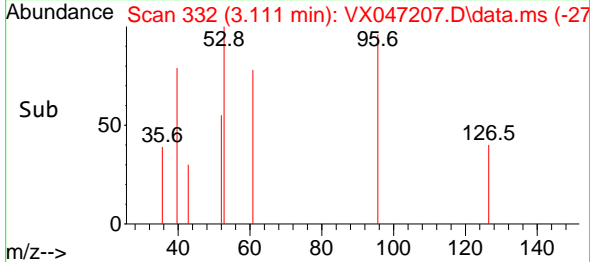
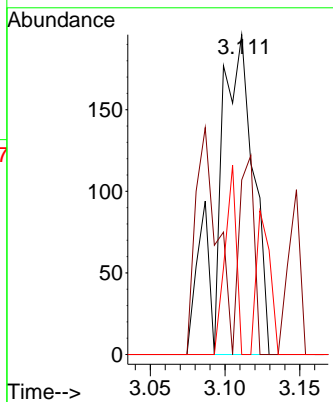


#15
 Acrylonitrile
 Concen: 0.244 ug/l
 RT: 3.111 min Scan# 31
 Delta R.T. 0.037 min
 Lab File: VX047207.D
 Acq: 01 Aug 2025 15:41

Instrument :
 MSVOA_X
 ClientSampleId :

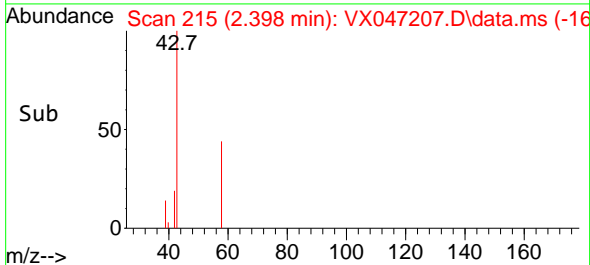
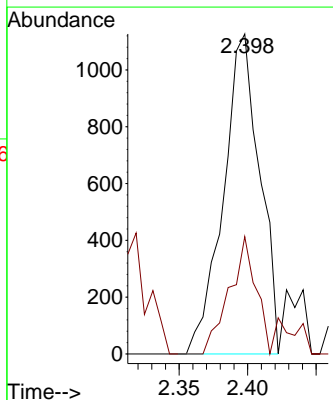
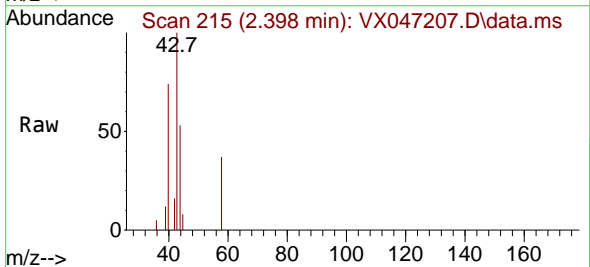


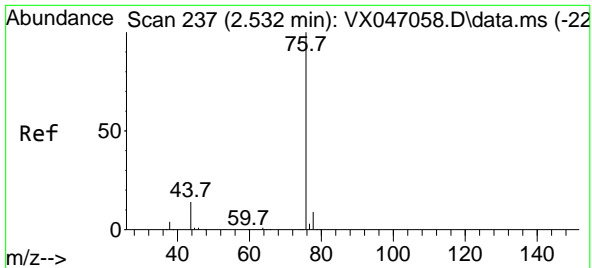
Tgt Ion: 53 Resp: 325
 Ion Ratio Lower Upper
 53 100
 52 25.8 65.7 98.5#
 51 17.2 28.8 43.2#



#16
 Acetone
 Concen: 1.864 ug/l
 RT: 2.398 min Scan# 215
 Delta R.T. 0.013 min
 Lab File: VX047207.D
 Acq: 01 Aug 2025 15:41

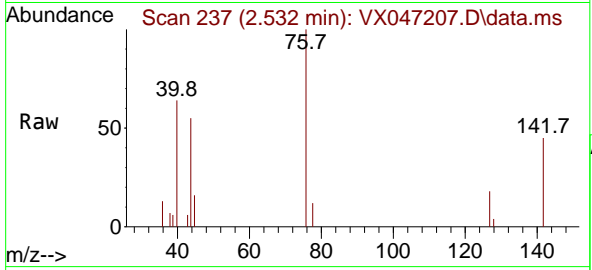
Tgt Ion: 43 Resp: 2083
 Ion Ratio Lower Upper
 43 100
 58 36.6 24.0 36.0#



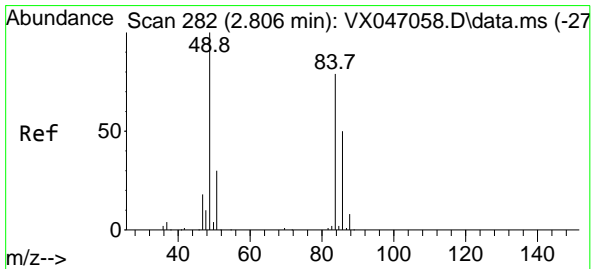
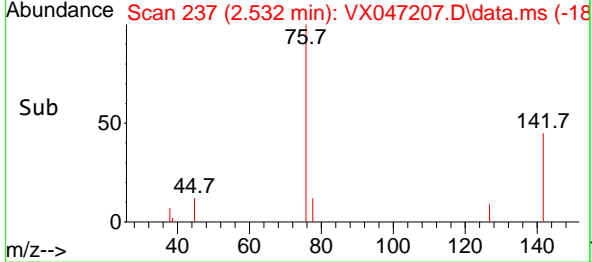
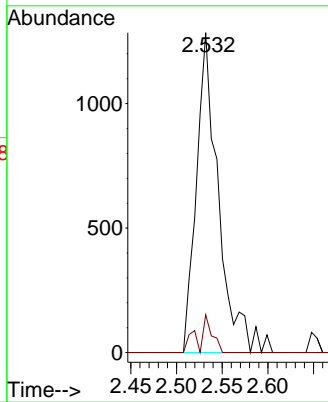


#17
 Carbon Disulfide
 Concen: 0.266 ug/l
 RT: 2.532 min Scan# 21
 Delta R.T. 0.000 min
 Lab File: VX047207.D
 Acq: 01 Aug 2025 15:41

Instrument :
 MSVOA_X
 ClientSampleId :

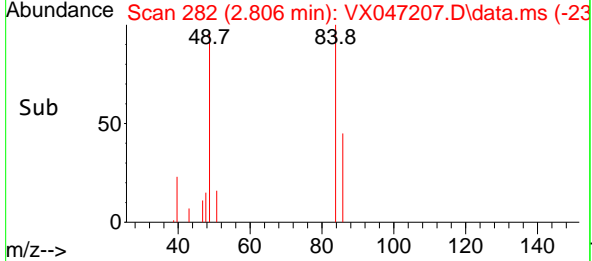
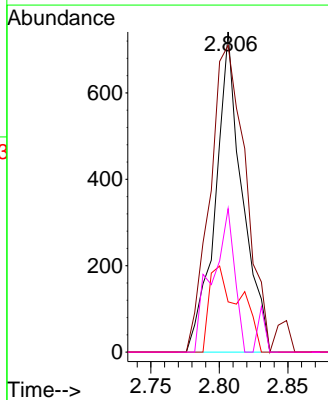
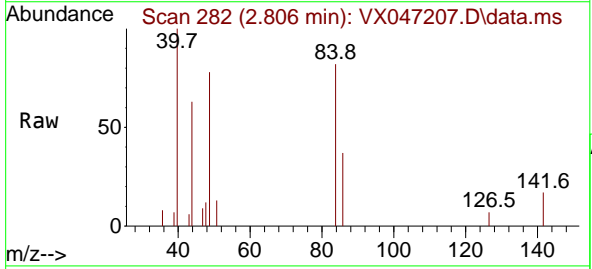


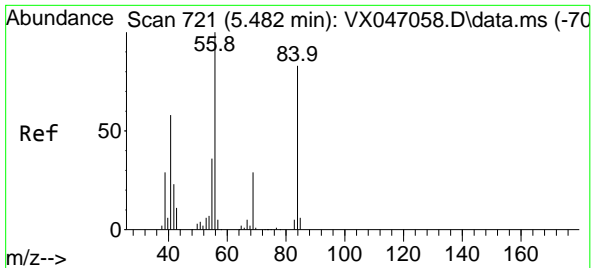
Tgt Ion: 76 Resp: 2164
 Ion Ratio Lower Upper
 76 100
 78 11.8 7.0 10.4#



#20
 Methylene Chloride
 Concen: 0.328 ug/l
 RT: 2.806 min Scan# 282
 Delta R.T. 0.000 min
 Lab File: VX047207.D
 Acq: 01 Aug 2025 15:41

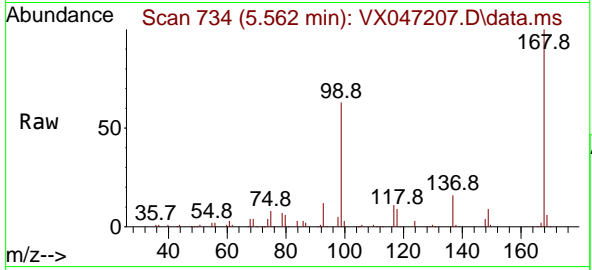
Tgt Ion: 84 Resp: 1007
 Ion Ratio Lower Upper
 84 100
 49 95.8 101.6 152.4#
 51 15.7 30.3 45.5#
 86 44.8 50.6 75.8#



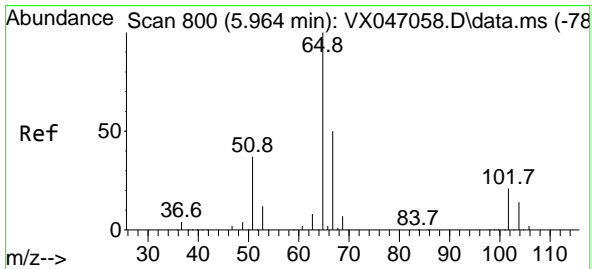
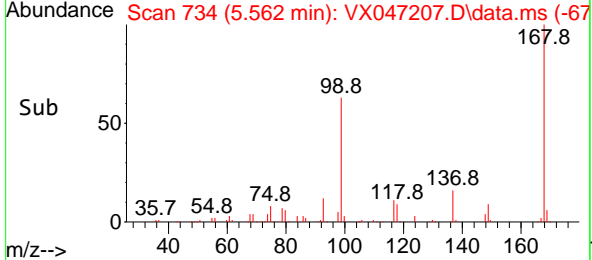
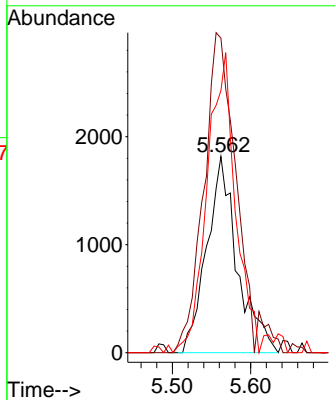


#31
 Cyclohexane
 Concen: 0.943 ug/l
 RT: 5.562 min Scan# 71
 Delta R.T. 0.080 min
 Lab File: VX047207.D
 Acq: 01 Aug 2025 15:41

Instrument :
 MSVOA_X
 ClientSampleId :

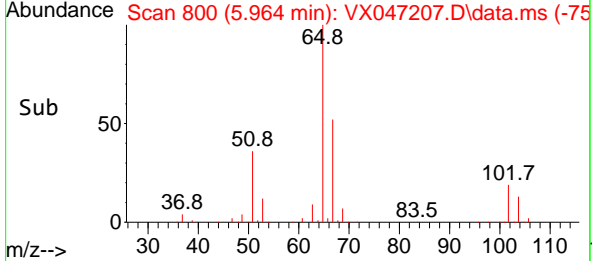
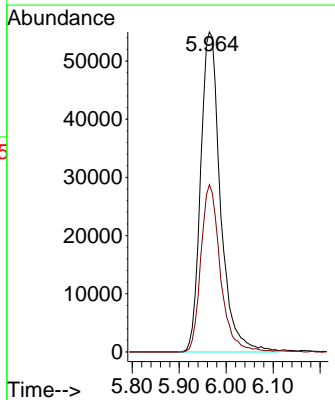
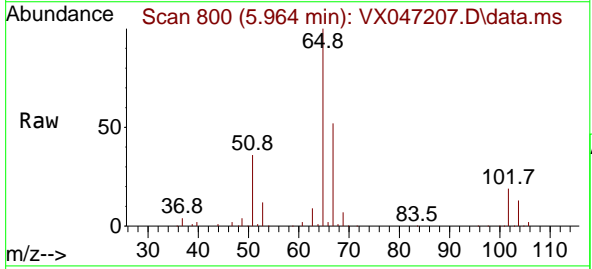


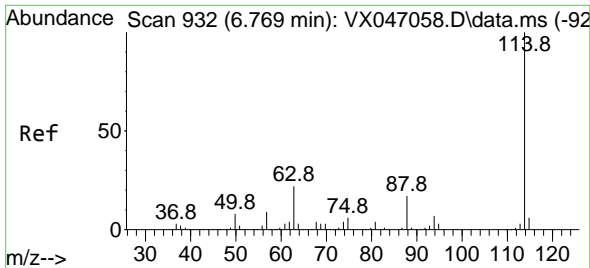
Tgt Ion: 56 Resp: 4919
 Ion Ratio Lower Upper
 56 100
 69 156.4 23.3 34.9#
 84 130.4 66.5 99.7#



#33
 1,2-Dichloroethane-d4
 Concen: 57.695 ug/l
 RT: 5.964 min Scan# 800
 Delta R.T. 0.000 min
 Lab File: VX047207.D
 Acq: 01 Aug 2025 15:41

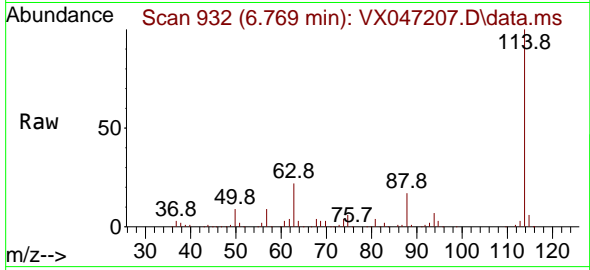
Tgt Ion: 65 Resp: 160917
 Ion Ratio Lower Upper
 65 100
 67 51.3 0.0 104.8



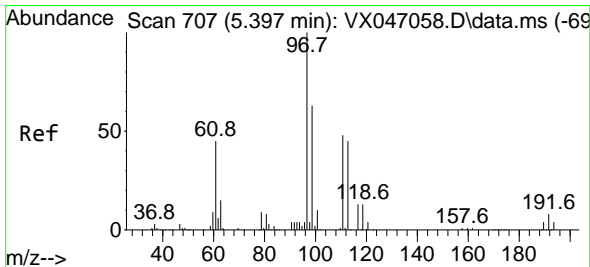
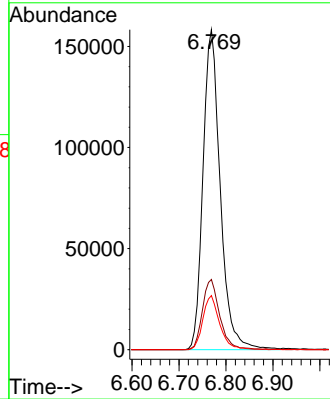
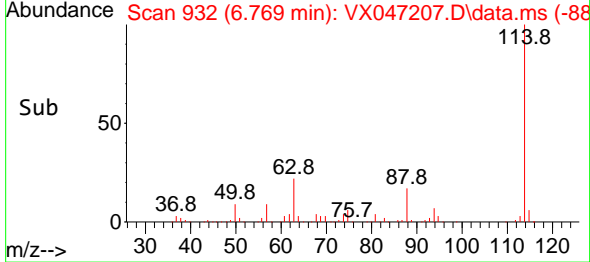


#34
 1,4-Difluorobenzene
 Concen: 50.000 ug/l
 RT: 6.769 min Scan# 911
 Delta R.T. 0.000 min
 Lab File: VX047207.D
 Acq: 01 Aug 2025 15:41

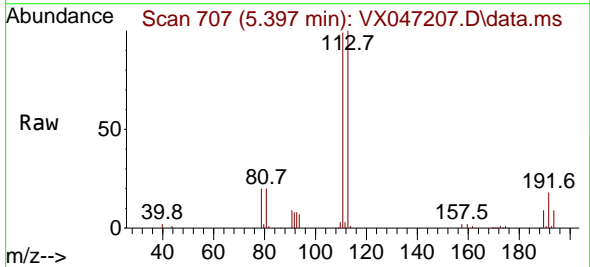
Instrument :
 MSVOA_X
 ClientSampleId :



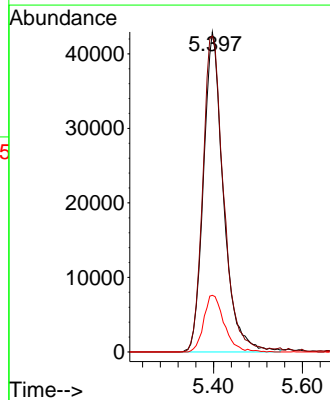
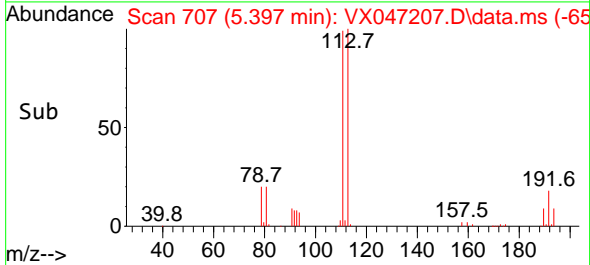
Tgt Ion:114 Resp: 403808
 Ion Ratio Lower Upper
 114 100
 63 22.0 0.0 43.2
 88 16.9 0.0 33.8

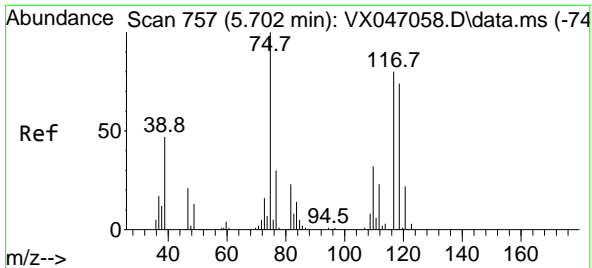


#35
 Dibromofluoromethane
 Concen: 53.777 ug/l
 RT: 5.397 min Scan# 707
 Delta R.T. 0.000 min
 Lab File: VX047207.D
 Acq: 01 Aug 2025 15:41



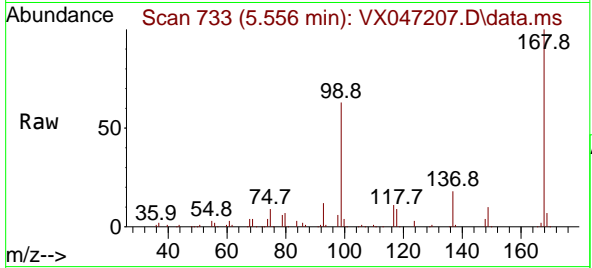
Tgt Ion:113 Resp: 134080
 Ion Ratio Lower Upper
 113 100
 111 102.6 82.6 124.0
 192 18.2 14.9 22.3



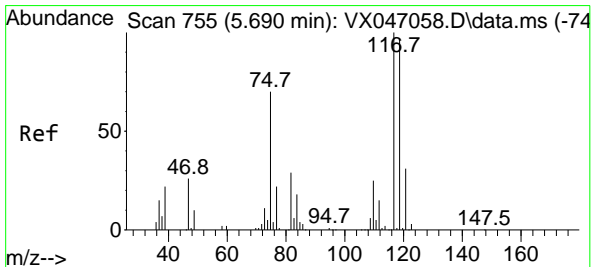
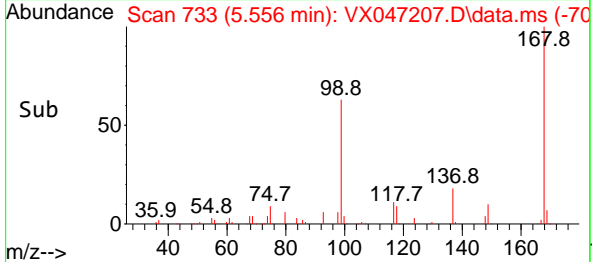
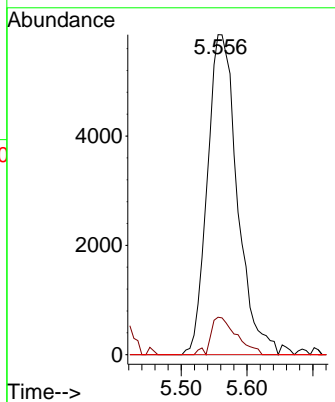


#36
 1,1-Dichloropropene
 Concen: 4.373 ug/l
 RT: 5.556 min Scan# 711
 Delta R.T. -0.146 min
 Lab File: VX047207.D
 Acq: 01 Aug 2025 15:41

Instrument : MSVOA_X
 ClientSampleId :

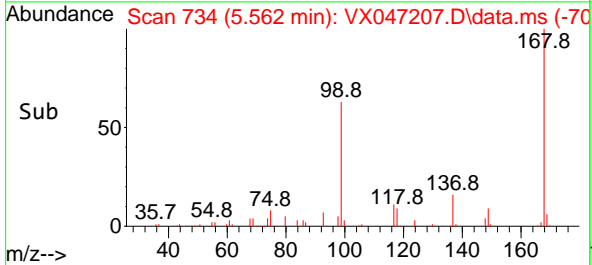
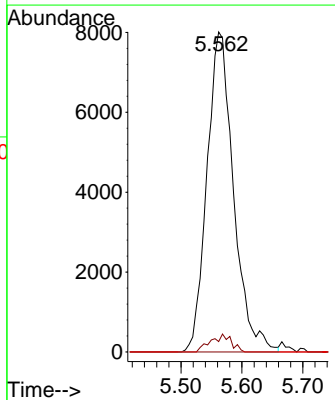
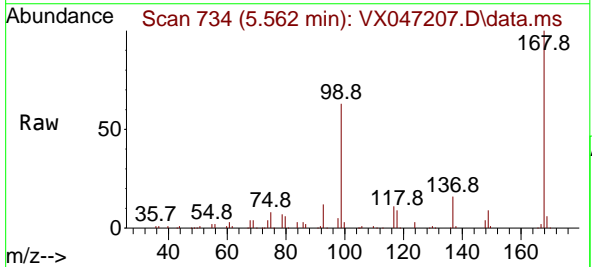


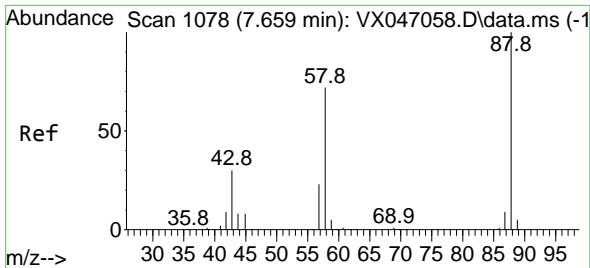
Tgt Ion: 75 Resp: 18587
 Ion Ratio Lower Upper
 75 100
 110 10.0 17.2 51.5#
 77 0.0 25.1 37.7#



#38
 Carbon Tetrachloride
 Concen: 5.348 ug/l
 RT: 5.562 min Scan# 734
 Delta R.T. -0.128 min
 Lab File: VX047207.D
 Acq: 01 Aug 2025 15:41

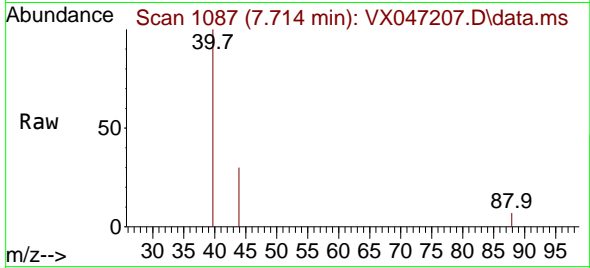
Tgt Ion: 117 Resp: 24258
 Ion Ratio Lower Upper
 117 100
 119 3.2 76.6 115.0#
 121 0.0 24.4 36.6#



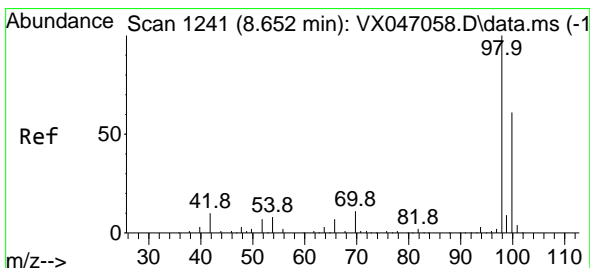
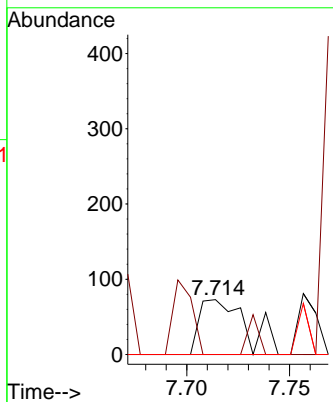
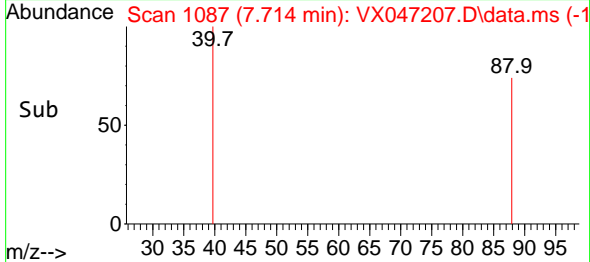


#49
 1,4-Dioxane
 Concen: 3.093 ug/l
 RT: 7.714 min Scan# 1087
 Delta R.T. 0.055 min
 Lab File: VX047207.D
 Acq: 01 Aug 2025 15:41

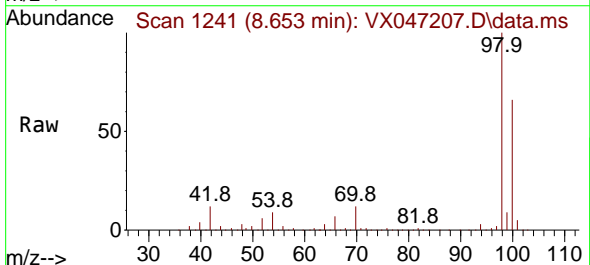
Instrument : MSVOA_X
 ClientSampleId :



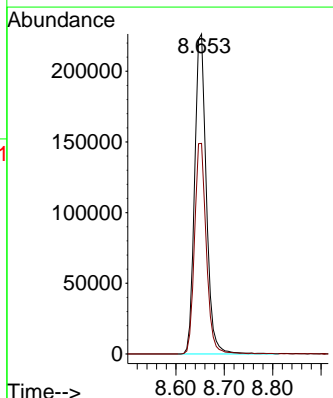
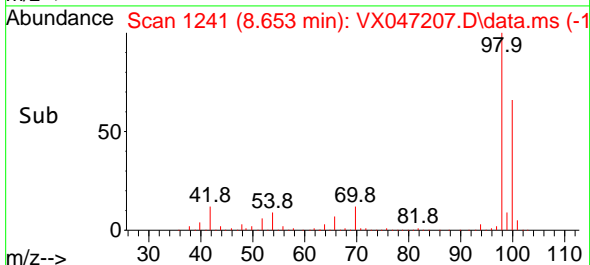
Tgt Ion: 88 Resp: 117
 Ion Ratio Lower Upper
 88 100
 43 54.7 33.6 50.4#
 58 0.0 58.8 88.2#

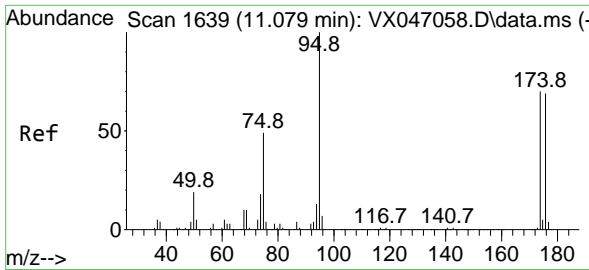


#50
 Toluene-d8
 Concen: 46.945 ug/l
 RT: 8.653 min Scan# 1241
 Delta R.T. 0.000 min
 Lab File: VX047207.D
 Acq: 01 Aug 2025 15:41



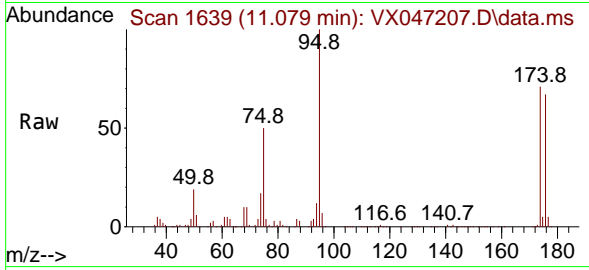
Tgt Ion: 98 Resp: 379048
 Ion Ratio Lower Upper
 98 100
 100 66.0 53.3 79.9



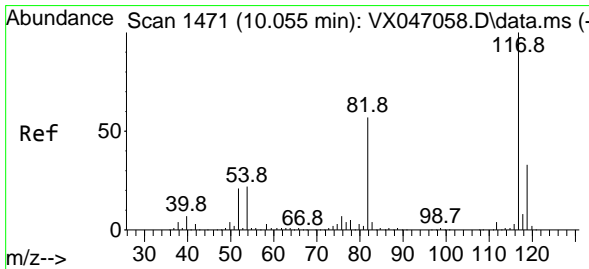
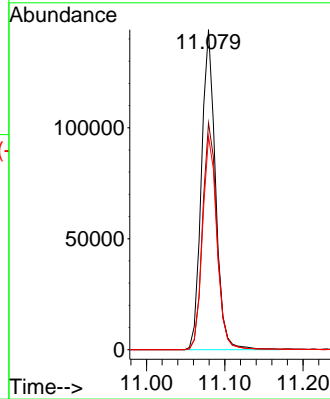
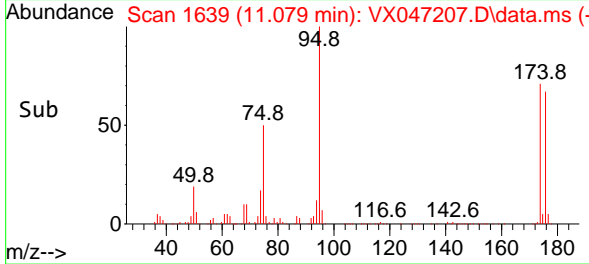


#62
 4-Bromofluorobenzene
 Concen: 51.620 ug/l
 RT: 11.079 min Scan# 1639
 Delta R.T. 0.000 min
 Lab File: VX047207.D
 Acq: 01 Aug 2025 15:41

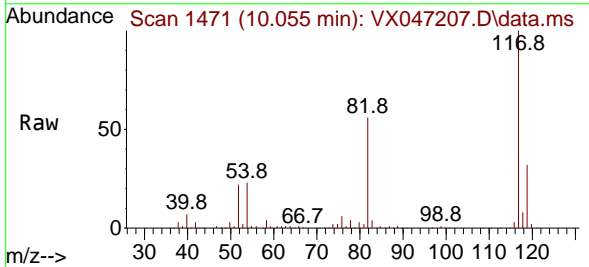
Instrument :
 MSVOA_X
 ClientSampleId :



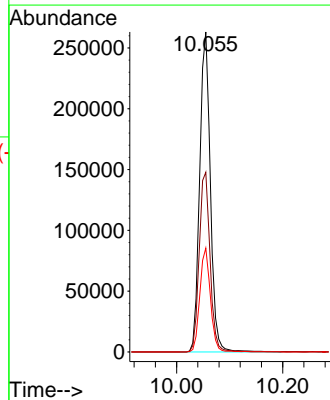
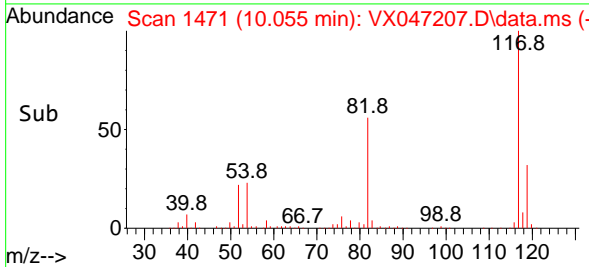
Tgt Ion: 95 Resp: 179615
 Ion Ratio Lower Upper
 95 100
 174 72.7 0.0 144.6
 176 68.8 0.0 139.6

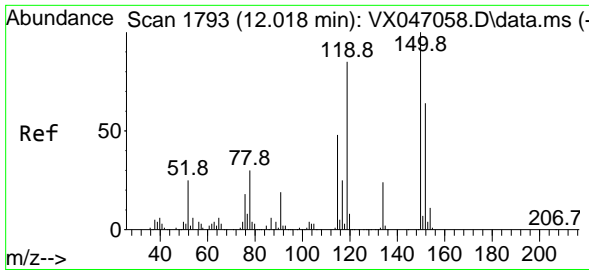


#63
 Chlorobenzene-d5
 Concen: 50.000 ug/l
 RT: 10.055 min Scan# 1471
 Delta R.T. 0.000 min
 Lab File: VX047207.D
 Acq: 01 Aug 2025 15:41



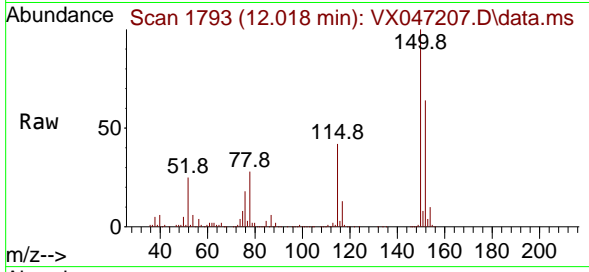
Tgt Ion: 117 Resp: 367505
 Ion Ratio Lower Upper
 117 100
 82 56.2 45.4 68.2
 119 32.5 26.1 39.1



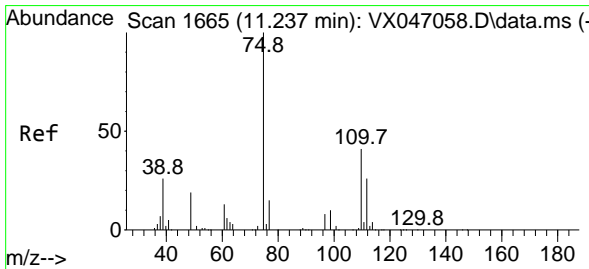
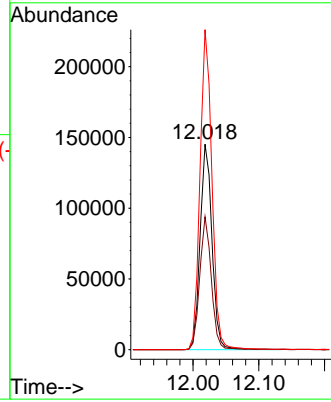
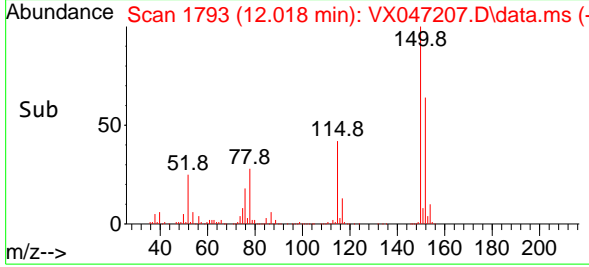


#72
 1,4-Dichlorobenzene-d4
 Concen: 50.000 ug/l
 RT: 12.018 min Scan# 11
 Delta R.T. 0.000 min
 Lab File: VX047207.D
 Acq: 01 Aug 2025 15:41

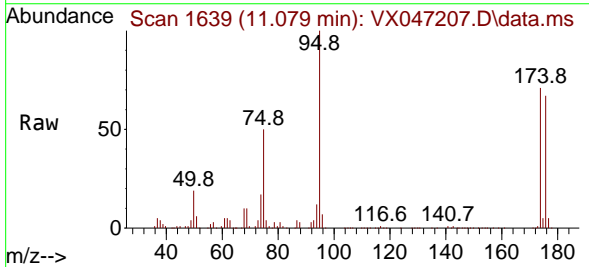
Instrument :
 MSVOA_X
 ClientSampleId :



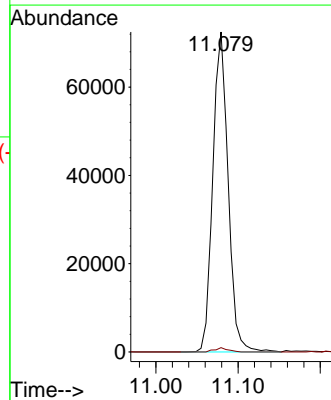
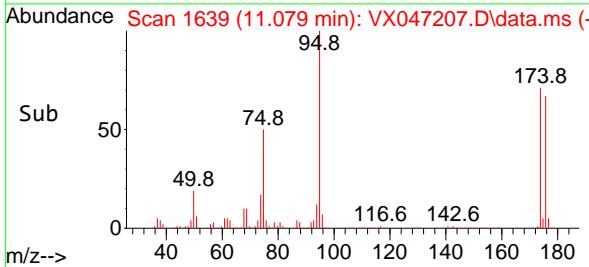
Tgt Ion:152 Resp: 182165
 Ion Ratio Lower Upper
 152 100
 115 63.0 45.6 136.7
 150 155.9 0.0 354.6

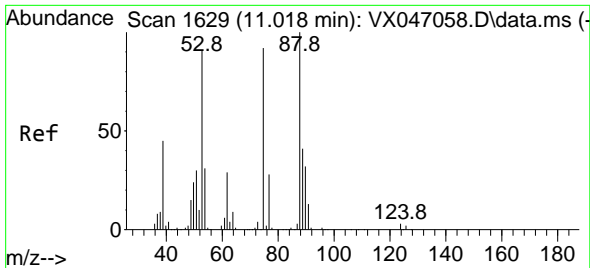


#76
 1,2,3-Trichloropropane
 Concen: 27.829 ug/l
 RT: 11.079 min Scan# 1639
 Delta R.T. -0.158 min
 Lab File: VX047207.D
 Acq: 01 Aug 2025 15:41



Tgt Ion: 75 Resp: 93834
 Ion Ratio Lower Upper
 75 100
 77 1.1 21.6 65.0#



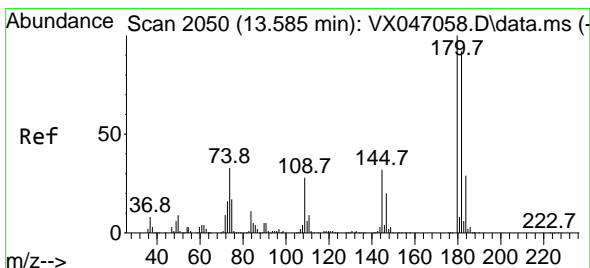
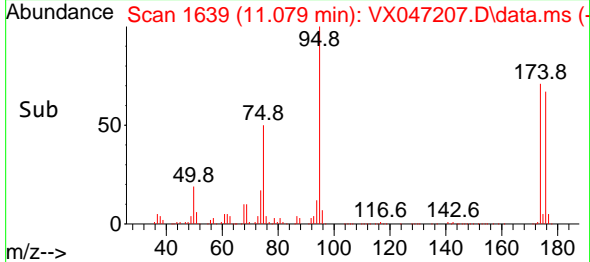
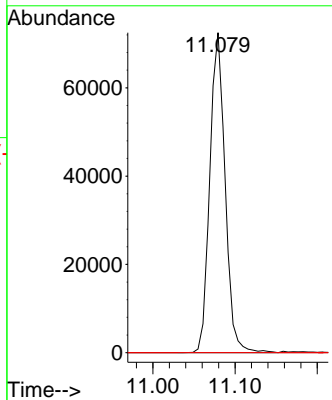
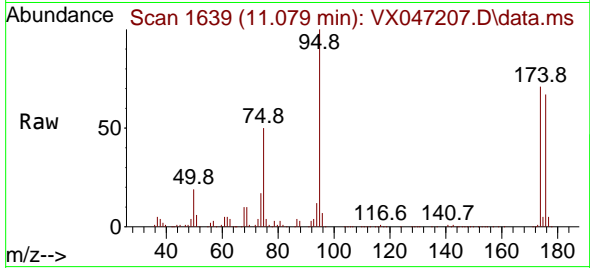


#81
 trans-1,4-Dichloro-2-butene
 Concen: 71.699 ug/l
 RT: 11.079 min Scan# 10
 Delta R.T. 0.061 min
 Lab File: VX047207.D
 Acq: 01 Aug 2025 15:41

Instrument : MSVOA_X
 ClientSampleId :

Tgt Ion: 75 Resp: 93834

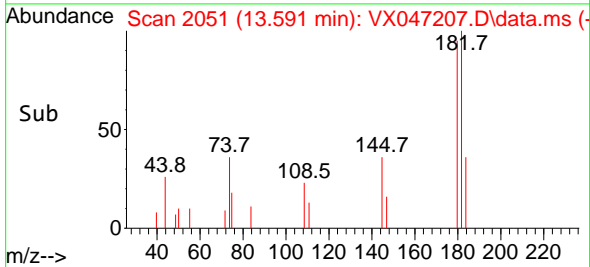
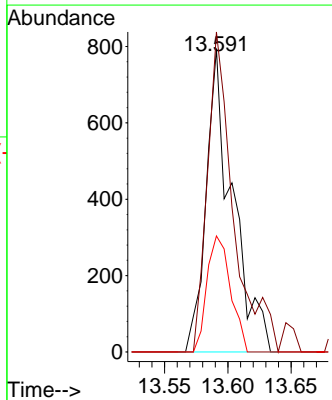
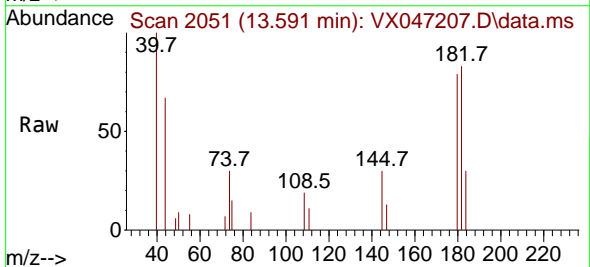
Ion	Ratio	Lower	Upper
75	100		
53	0.0	84.2	126.4#
89	0.0	36.0	54.0#

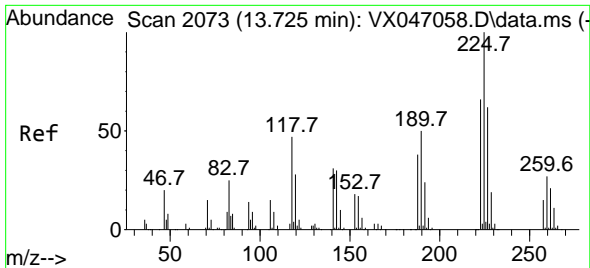


#93
 1,2,4-Trichlorobenzene
 Concen: 0.277 ug/l
 RT: 13.591 min Scan# 2051
 Delta R.T. 0.006 min
 Lab File: VX047207.D
 Acq: 01 Aug 2025 15:41

Tgt Ion: 180 Resp: 1147

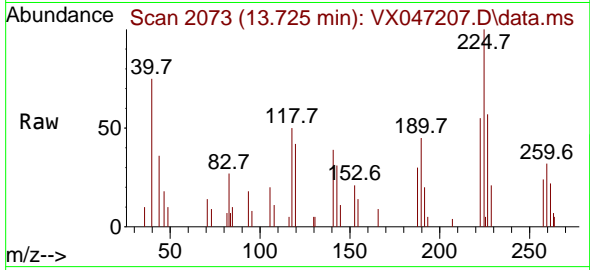
Ion	Ratio	Lower	Upper
180	100		
182	104.8	47.3	141.8
145	34.4	16.4	49.1



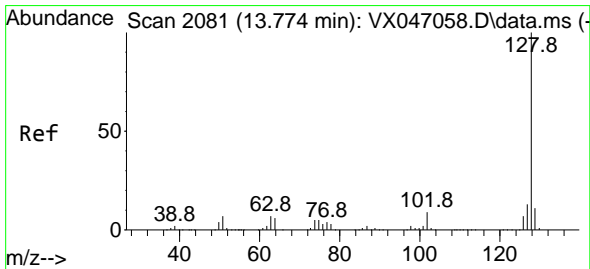
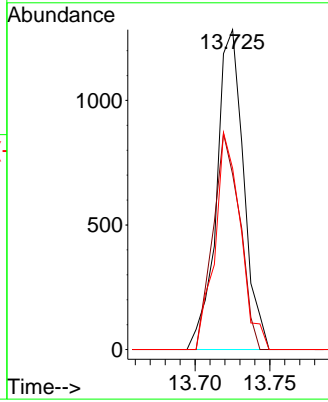
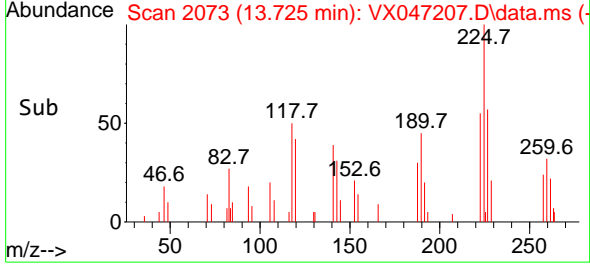


#94
 Hexachlorobutadiene
 Concen: 1.145 ug/l
 RT: 13.725 min Scan# 2073
 Delta R.T. 0.000 min
 Lab File: VX047207.D
 Acq: 01 Aug 2025 15:41

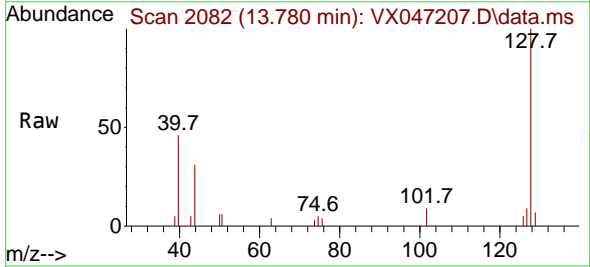
Instrument : MSVOA_X
 ClientSampleId :



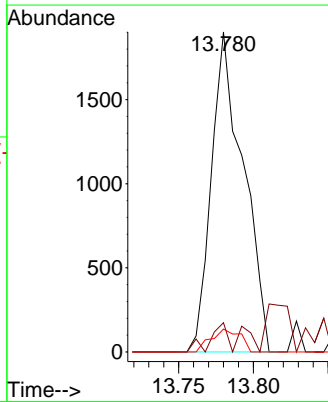
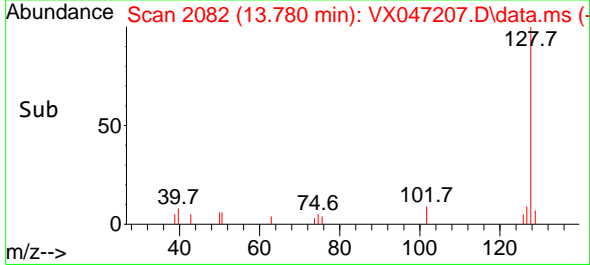
Tgt Ion:225 Resp: 1610
 Ion Ratio Lower Upper
 225 100
 223 67.0 31.6 95.0
 227 64.5 32.9 98.6

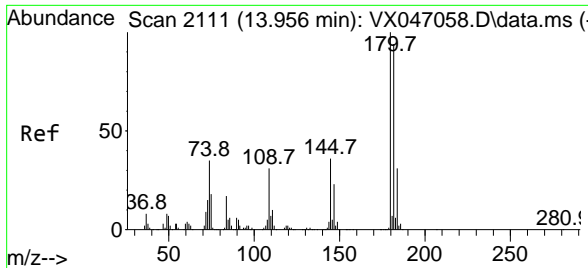


#95
 Naphthalene
 Concen: 0.232 ug/l
 RT: 13.780 min Scan# 2082
 Delta R.T. 0.006 min
 Lab File: VX047207.D
 Acq: 01 Aug 2025 15:41



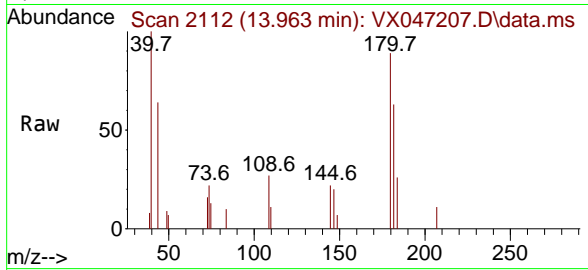
Tgt Ion:128 Resp: 2813
 Ion Ratio Lower Upper
 128 100
 127 4.8 10.1 15.1#
 129 6.5 8.6 13.0#





#96
 1,2,3-Trichlorobenzene
 Concen: 0.285 ug/l
 RT: 13.963 min Scan# 21
 Delta R.T. 0.006 min
 Lab File: VX047207.D
 Acq: 01 Aug 2025 15:41

Instrument :
 MSVOA_X
 ClientSampleId :



Tgt Ion:180 Resp: 1137

Ion	Ratio	Lower	Upper
180	100		
182	91.1	46.9	140.6
145	28.8	17.3	52.0

