

Data Path : Z:\voasrv\HPCHEM1\MSVOA_X\Data\VX080125\
 Data File : VX047209.D
 Acq On : 01 Aug 2025 16:23
 Operator : JC/MD
 Sample : Q2744-02
 Misc : 5.0mL/MSVOA_X/WATER
 ALS Vial : 9 Sample Multiplier: 1

Instrument :
 MSVOA_X
 ClientSampleId :

Quant Time: Aug 02 00:27:32 2025
 Quant Method : Z:\voasrv\HPCHEM1\MSVOA_X\Method\82X072125W.M
 Quant Title : SW846 8260
 QLast Update : Tue Jul 22 03:59:51 2025
 Response via : Initial Calibration

Compound	R.T.	QIon	Response	Conc	Units	Dev(Min)

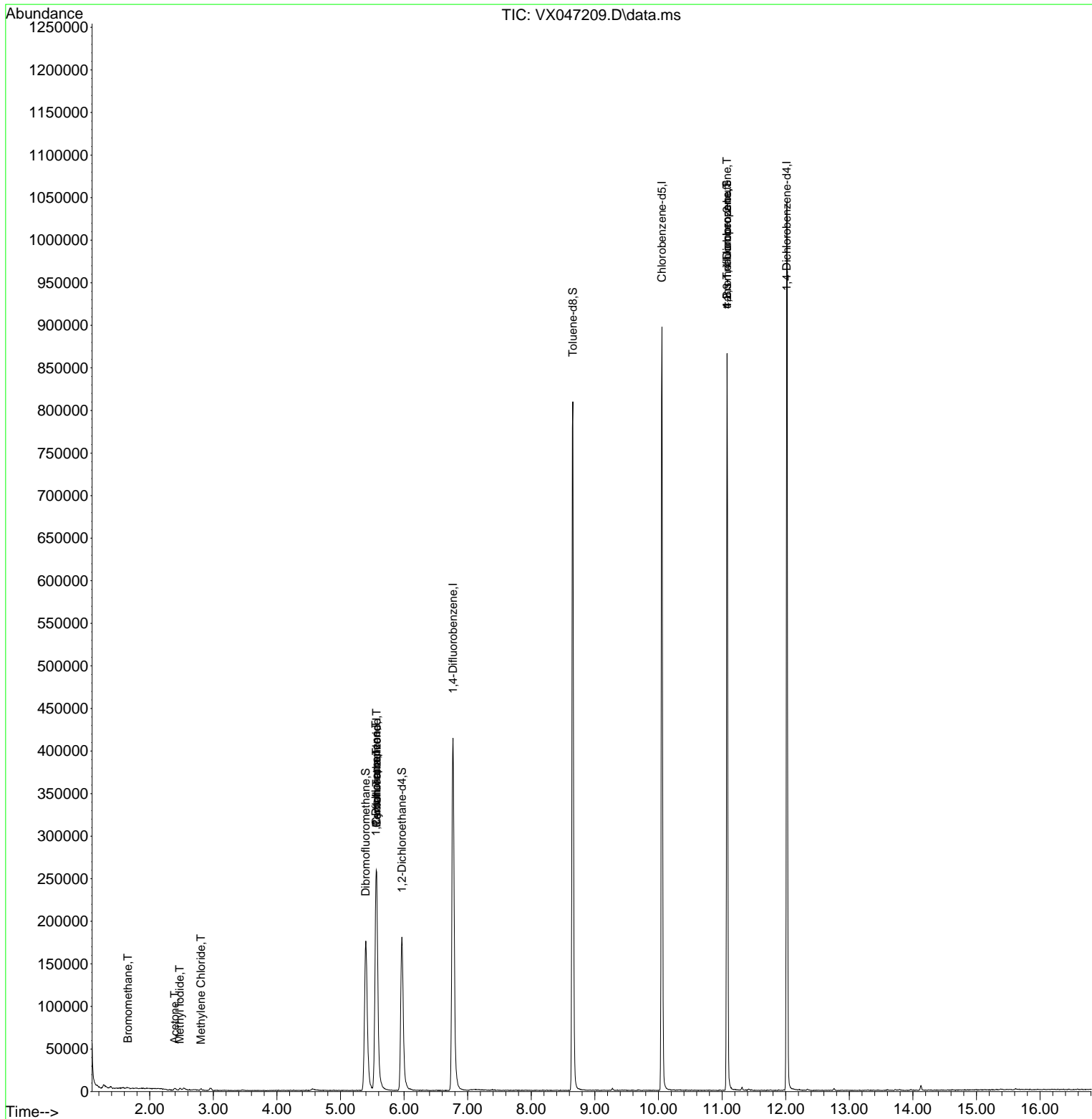
Internal Standards						
1) Pentafluorobenzene	5.568	168	262356	50.000	ug/l	0.00
34) 1,4-Difluorobenzene	6.769	114	449740	50.000	ug/l	0.00
63) Chlorobenzene-d5	10.055	117	402679	50.000	ug/l	0.00
72) 1,4-Dichlorobenzene-d4	12.018	152	207141	50.000	ug/l	0.00
System Monitoring Compounds						
33) 1,2-Dichloroethane-d4	5.964	65	194027	59.370	ug/l	0.00
Spiked Amount	50.000	Range 78 - 117	Recovery	=	118.740%#	
35) Dibromofluoromethane	5.397	113	163415	58.849	ug/l	0.00
Spiked Amount	50.000	Range 75 - 124	Recovery	=	117.700%	
50) Toluene-d8	8.652	98	493171	54.841	ug/l	0.00
Spiked Amount	50.000	Range 92 - 112	Recovery	=	109.680%	
62) 4-Bromofluorobenzene	11.079	95	232900	60.097	ug/l	0.00
Spiked Amount	50.000	Range 83 - 123	Recovery	=	120.200%	
Target Compounds						
						Qvalue
5) Bromomethane	1.654	94	553	0.275	ug/l #	4
10) Methyl Iodide	2.471	142	3476	1.025	ug/l	95
11) Tert butyl alcohol	2.946	59	417	Below Cal	#	72
16) Acetone	2.391	43	3049	2.329	ug/l #	84
20) Methylene Chloride	2.806	84	749	0.208	ug/l #	87
31) Cyclohexane	5.562	56	6313	1.033	ug/l #	13
36) 1,1-Dichloropropene	5.556	75	22548	4.764	ug/l #	51
38) Carbon Tetrachloride	5.568	117	28775	5.696	ug/l #	15
76) 1,2,3-Trichloropropane	11.079	75	122525	31.957	ug/l #	35
81) trans-1,4-Dichloro-2-b...	11.079	75	122525	82.333	ug/l #	8

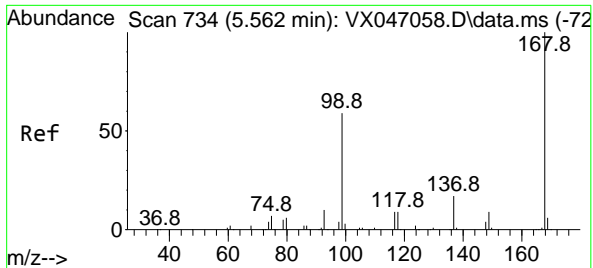
(#) = qualifier out of range (m) = manual integration (+) = signals summed

Data Path : Z:\voasrv\HPCHEM1\MSVOA_X\Data\VX080125\
 Data File : VX047209.D
 Acq On : 01 Aug 2025 16:23
 Operator : JC/MD
 Sample : Q2744-02
 Misc : 5.0mL/MSVOA_X/WATER
 ALS Vial : 9 Sample Multiplier: 1

Instrument :
 MSVOA_X
 ClientSampleId :

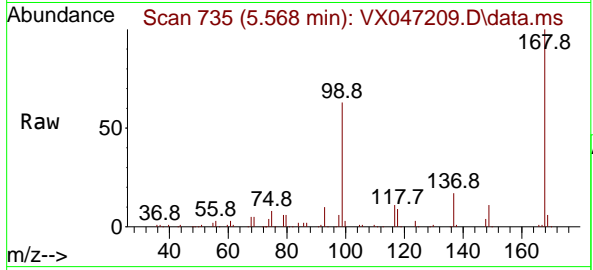
Quant Time: Aug 02 00:27:32 2025
 Quant Method : Z:\voasrv\HPCHEM1\MSVOA_X\Method\82X072125W.M
 Quant Title : SW846 8260
 QLast Update : Tue Jul 22 03:59:51 2025
 Response via : Initial Calibration



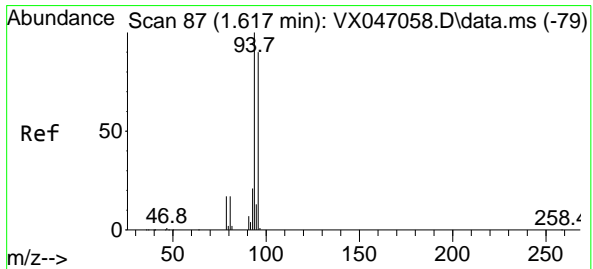
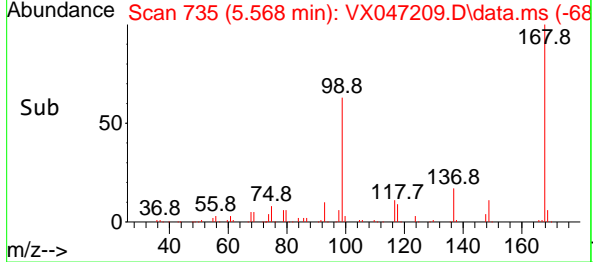
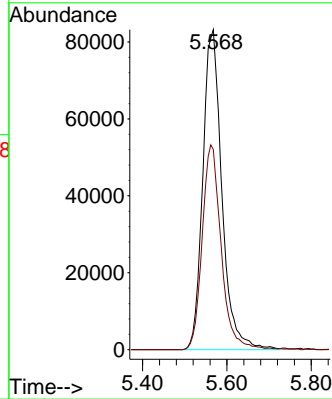


#1
 Pentafluorobenzene
 Concen: 50.000 ug/l
 RT: 5.568 min Scan# 71
 Delta R.T. 0.006 min
 Lab File: VX047209.D
 Acq: 01 Aug 2025 16:23

Instrument : MSVOA_X
 ClientSampleId :

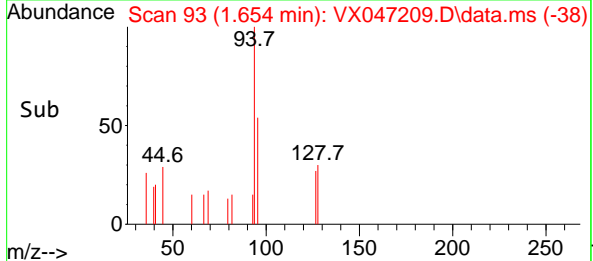
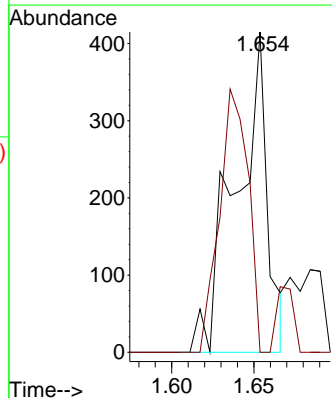
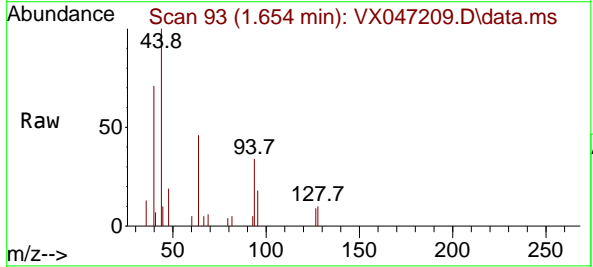


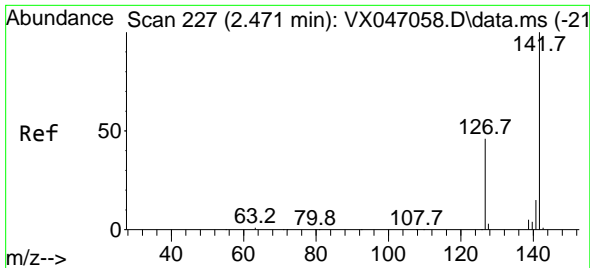
Tgt Ion:168 Resp: 262356
 Ion Ratio Lower Upper
 168 100
 99 62.6 48.0 72.0



#5
 Bromomethane
 Concen: 0.275 ug/l
 RT: 1.654 min Scan# 93
 Delta R.T. 0.037 min
 Lab File: VX047209.D
 Acq: 01 Aug 2025 16:23

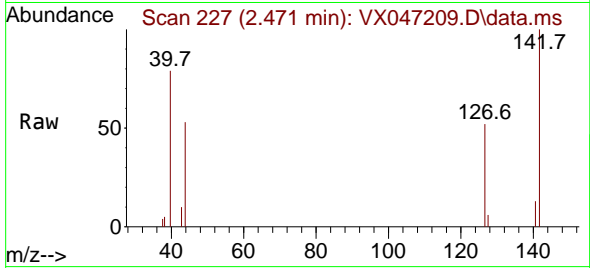
Tgt Ion: 94 Resp: 553
 Ion Ratio Lower Upper
 94 100
 96 0.0 72.3 108.5#



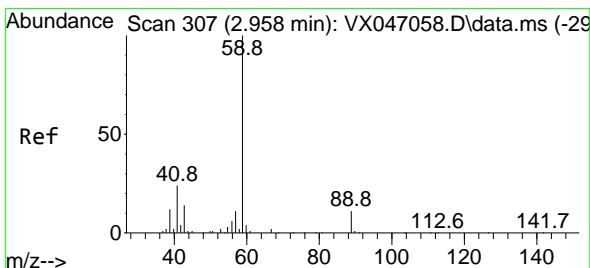
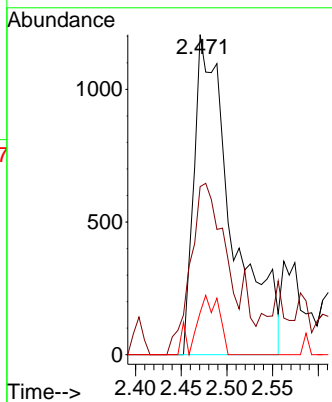
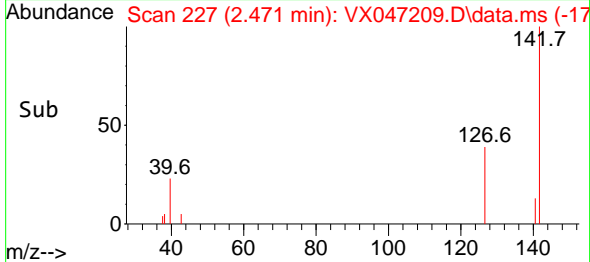


#10
Methyl Iodide
Concen: 1.025 ug/l
RT: 2.471 min Scan# 21
Delta R.T. 0.000 min
Lab File: VX047209.D
Acq: 01 Aug 2025 16:23

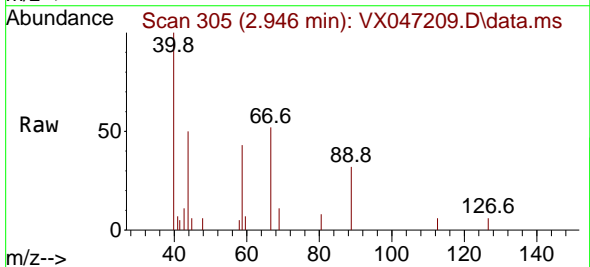
Instrument : MSVOA_X
ClientSampleId :



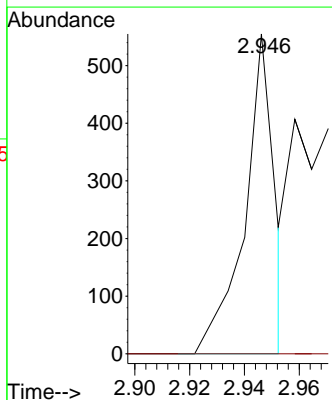
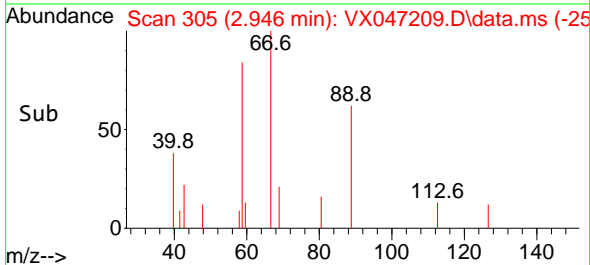
Tgt Ion:142 Resp: 3476
Ion Ratio Lower Upper
142 100
127 48.8 36.6 54.8
141 11.3 10.9 16.3

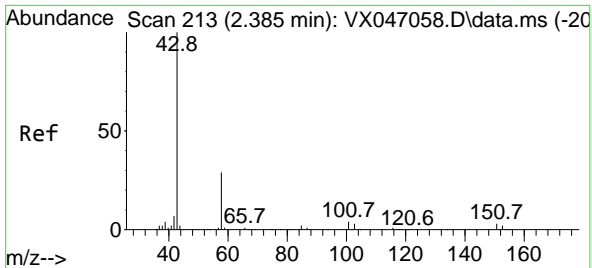


#11
Tert butyl alcohol
Concen: Below Cal
RT: 2.946 min Scan# 305
Delta R.T. -0.012 min
Lab File: VX047209.D
Acq: 01 Aug 2025 16:23



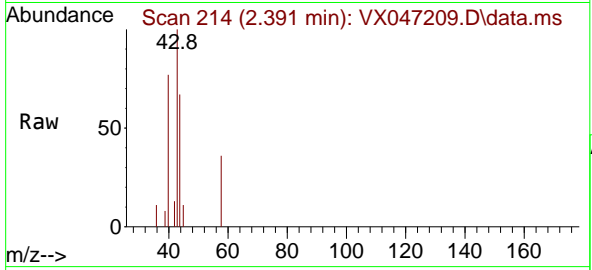
Tgt Ion: 59 Resp: 417
Ion Ratio Lower Upper
59 100
57 0.0 8.5 12.7#



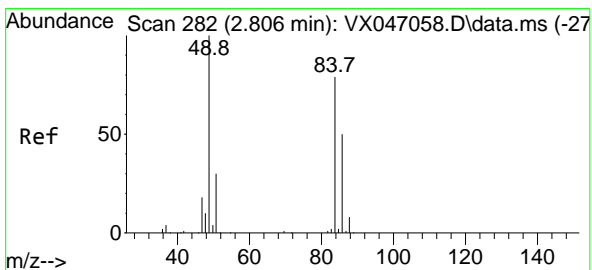
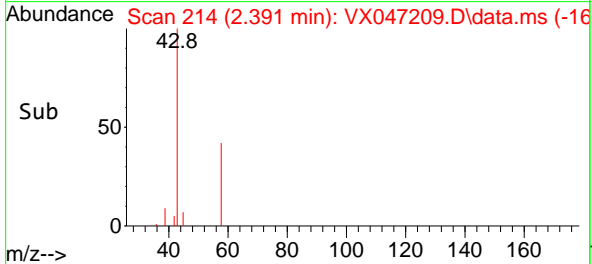
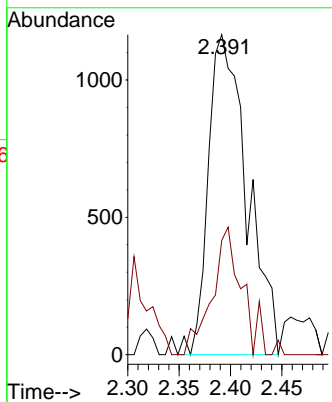


#16
 Acetone
 Concen: 2.329 ug/l
 RT: 2.391 min Scan# 21
 Delta R.T. 0.006 min
 Lab File: VX047209.D
 Acq: 01 Aug 2025 16:23

Instrument :
 MSVOA_X
 ClientSampleId :

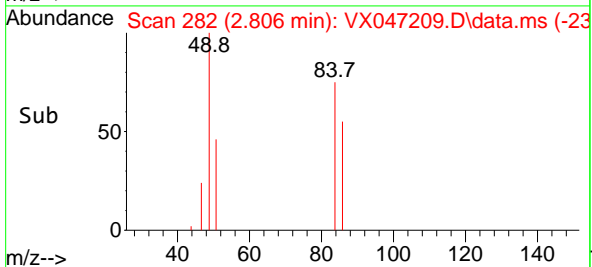
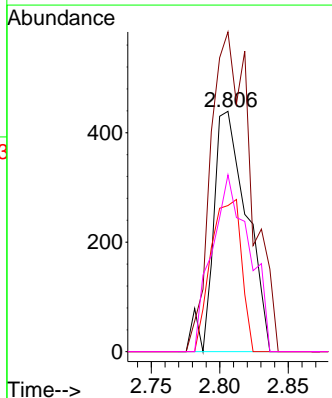
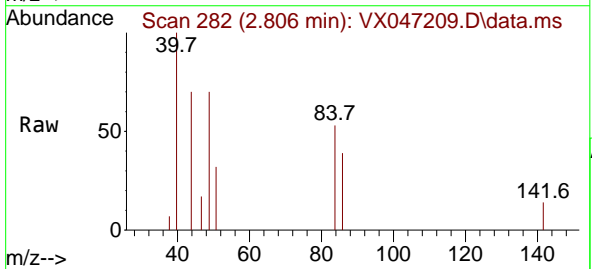


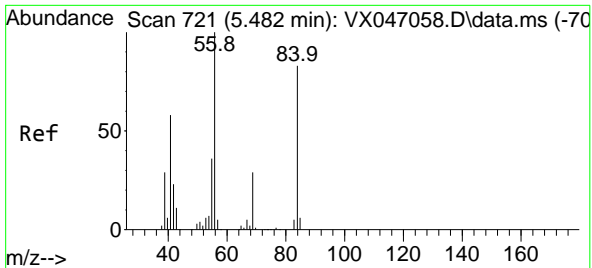
Tgt Ion: 43 Resp: 3049
 Ion Ratio Lower Upper
 43 100
 58 21.4 24.0 36.0#



#20
 Methylene Chloride
 Concen: 0.208 ug/l
 RT: 2.806 min Scan# 282
 Delta R.T. -0.000 min
 Lab File: VX047209.D
 Acq: 01 Aug 2025 16:23

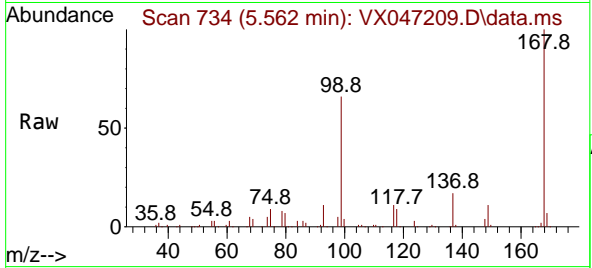
Tgt Ion: 84 Resp: 749
 Ion Ratio Lower Upper
 84 100
 49 133.0 101.6 152.4
 51 60.8 30.3 45.5#
 86 73.6 50.6 75.8



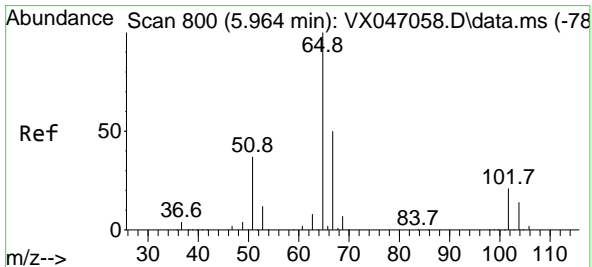
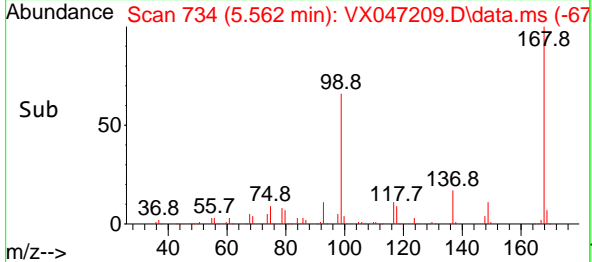
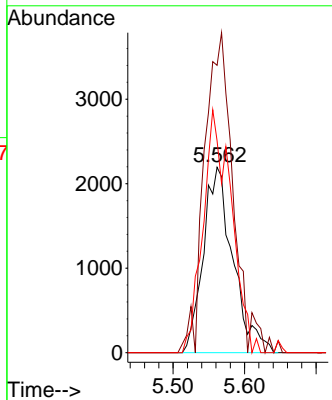


#31
 Cyclohexane
 Concen: 1.033 ug/l
 RT: 5.562 min Scan# 71
 Delta R.T. 0.079 min
 Lab File: VX047209.D
 Acq: 01 Aug 2025 16:23

Instrument :
 MSVOA_X
 ClientSampleId :

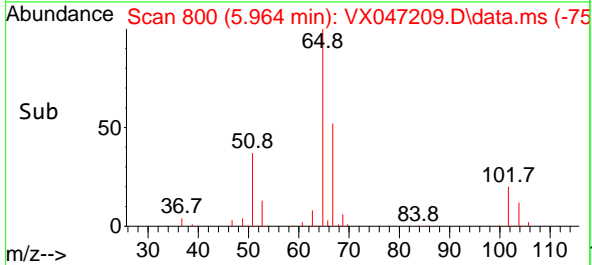
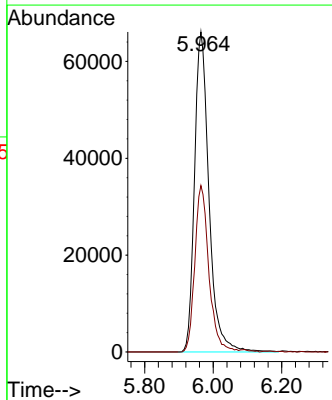
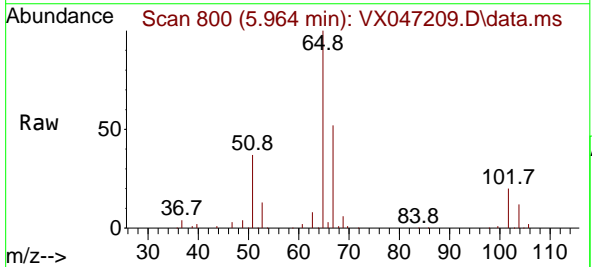


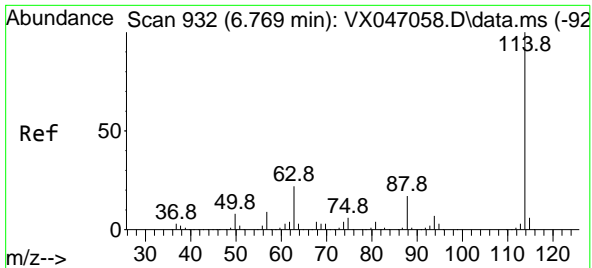
Tgt Ion: 56 Resp: 6313
 Ion Ratio Lower Upper
 56 100
 69 154.9 23.3 34.9#
 84 114.3 66.5 99.7#



#33
 1,2-Dichloroethane-d4
 Concen: 59.370 ug/l
 RT: 5.964 min Scan# 800
 Delta R.T. -0.000 min
 Lab File: VX047209.D
 Acq: 01 Aug 2025 16:23

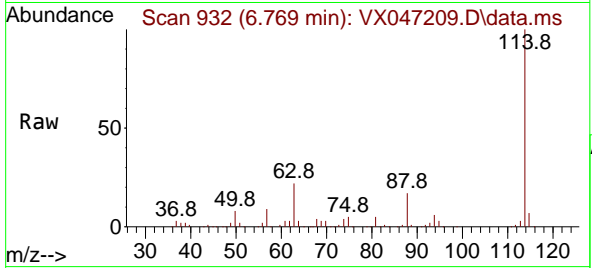
Tgt Ion: 65 Resp: 194027
 Ion Ratio Lower Upper
 65 100
 67 50.6 0.0 104.8



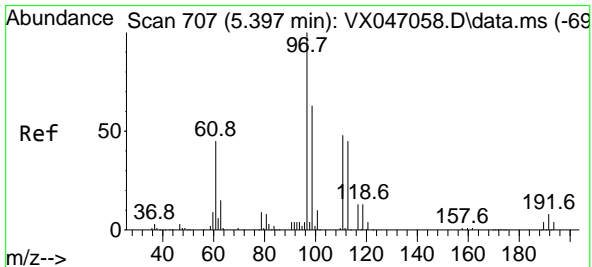
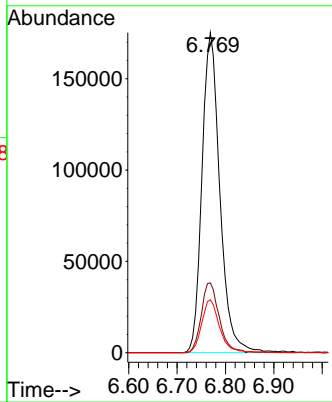
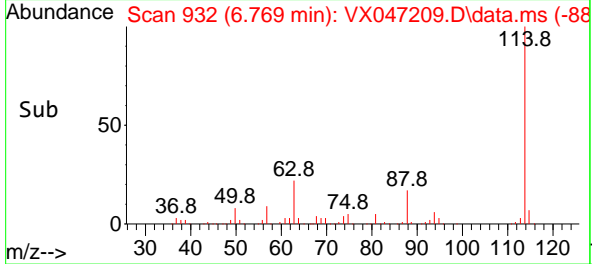


#34
 1,4-Difluorobenzene
 Concen: 50.000 ug/l
 RT: 6.769 min Scan# 91
 Delta R.T. -0.000 min
 Lab File: VX047209.D
 Acq: 01 Aug 2025 16:23

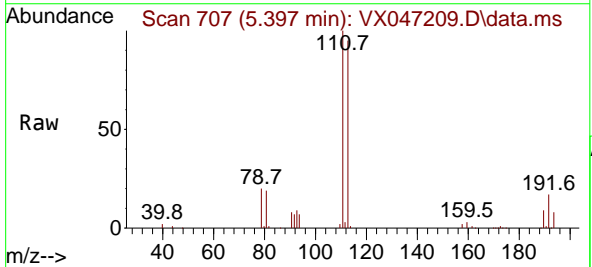
Instrument :
 MSVOA_X
 ClientSampleId :



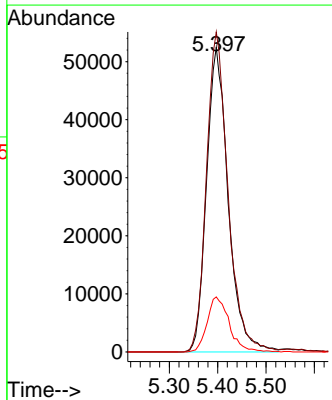
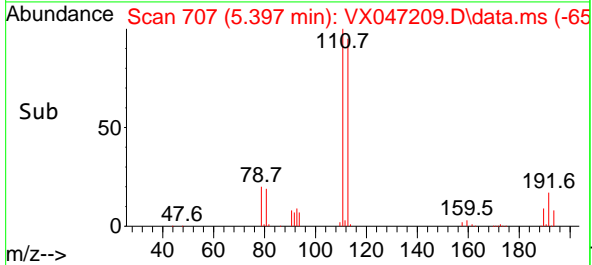
Tgt Ion:114 Resp: 449740
 Ion Ratio Lower Upper
 114 100
 63 21.8 0.0 43.2
 88 16.5 0.0 33.8

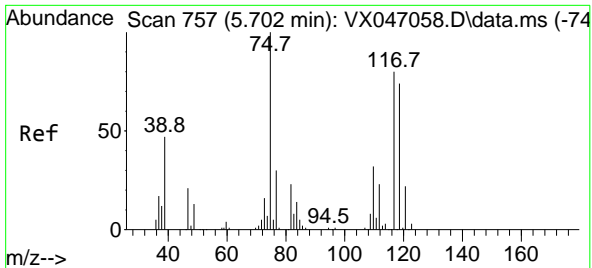


#35
 Dibromofluoromethane
 Concen: 58.849 ug/l
 RT: 5.397 min Scan# 707
 Delta R.T. -0.000 min
 Lab File: VX047209.D
 Acq: 01 Aug 2025 16:23



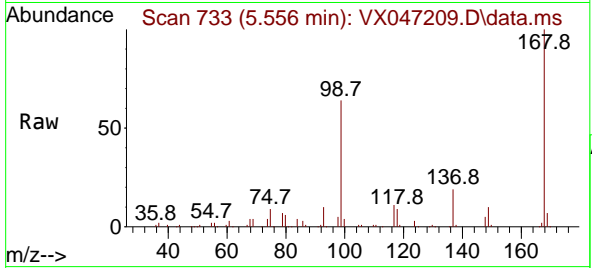
Tgt Ion:113 Resp: 163415
 Ion Ratio Lower Upper
 113 100
 111 104.5 82.6 124.0
 192 18.5 14.9 22.3



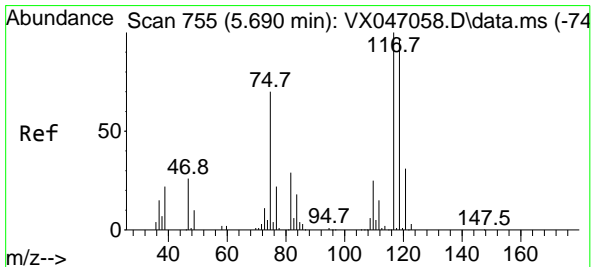
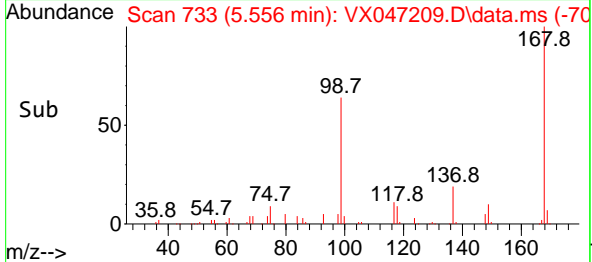
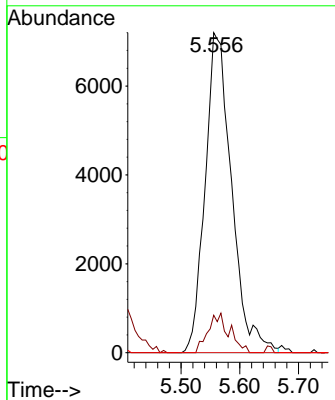


#36
 1,1-Dichloropropene
 Concen: 4.764 ug/l
 RT: 5.556 min Scan# 711
 Delta R.T. -0.146 min
 Lab File: VX047209.D
 Acq: 01 Aug 2025 16:23

Instrument : MSVOA_X
 ClientSampleId :

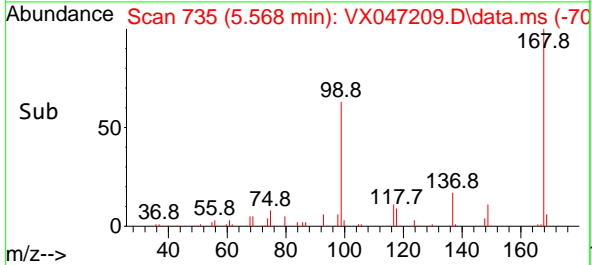
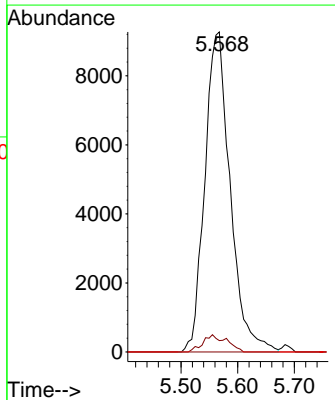
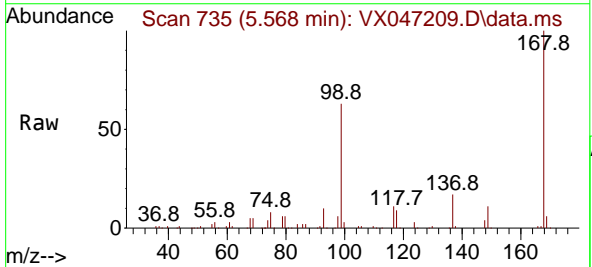


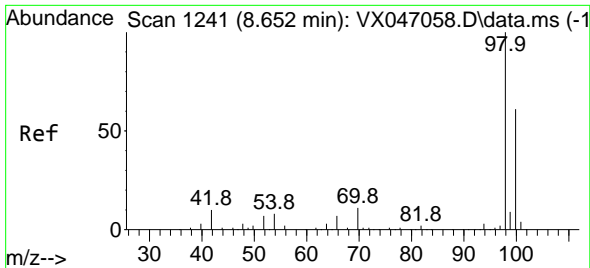
Tgt Ion: 75 Resp: 22548
 Ion Ratio Lower Upper
 75 100
 110 9.9 17.2 51.5#
 77 0.0 25.1 37.7#



#38
 Carbon Tetrachloride
 Concen: 5.696 ug/l
 RT: 5.568 min Scan# 735
 Delta R.T. -0.122 min
 Lab File: VX047209.D
 Acq: 01 Aug 2025 16:23

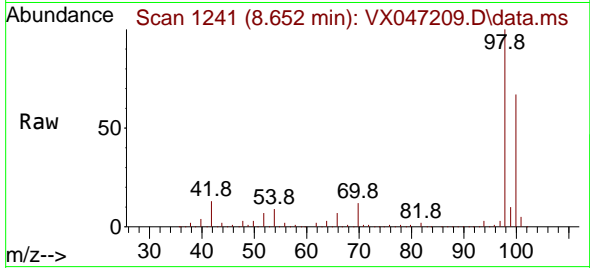
Tgt Ion: 117 Resp: 28775
 Ion Ratio Lower Upper
 117 100
 119 3.5 76.6 115.0#
 121 0.0 24.4 36.6#



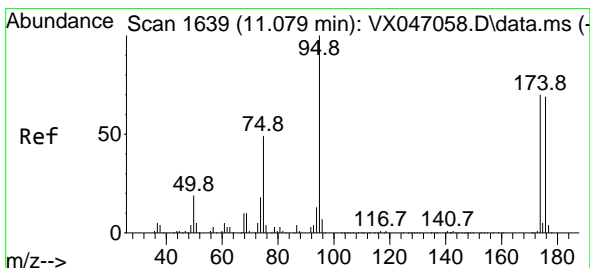
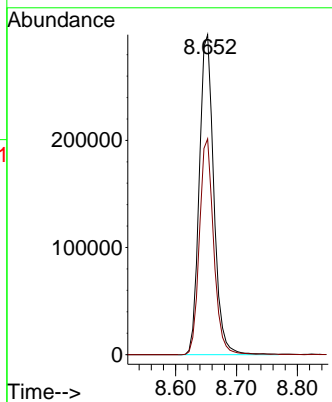
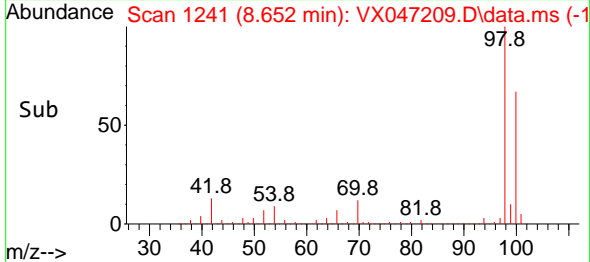


#50
 Toluene-d8
 Concen: 54.841 ug/l
 RT: 8.652 min Scan# 11
 Delta R.T. 0.000 min
 Lab File: VX047209.D
 Acq: 01 Aug 2025 16:23

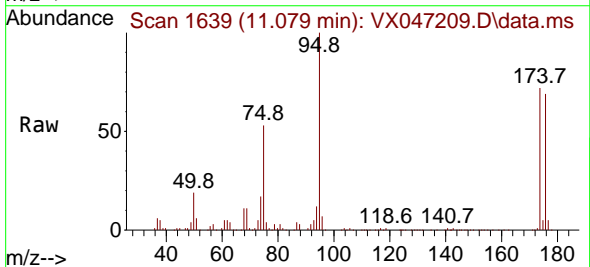
Instrument :
 MSVOA_X
 ClientSampleId :



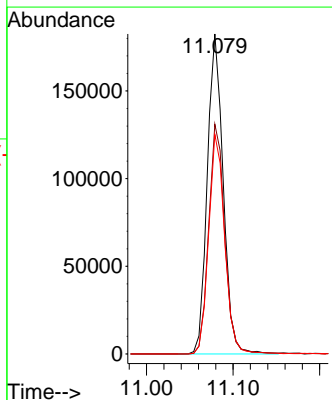
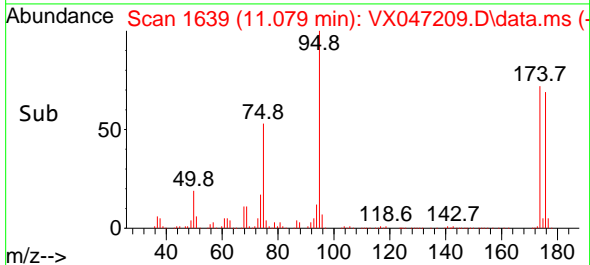
Tgt Ion: 98 Resp: 493171
 Ion Ratio Lower Upper
 98 100
 100 66.3 53.3 79.9

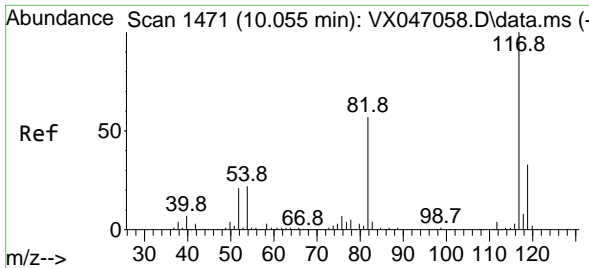


#62
 4-Bromofluorobenzene
 Concen: 60.097 ug/l
 RT: 11.079 min Scan# 1639
 Delta R.T. 0.000 min
 Lab File: VX047209.D
 Acq: 01 Aug 2025 16:23



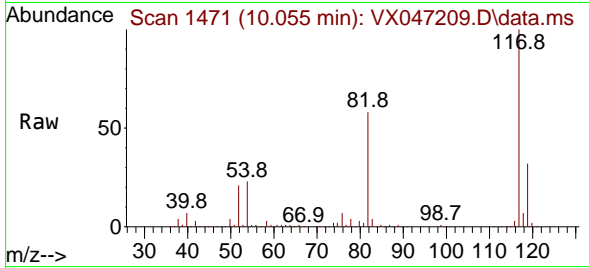
Tgt Ion: 95 Resp: 232900
 Ion Ratio Lower Upper
 95 100
 174 72.4 0.0 144.6
 176 69.2 0.0 139.6



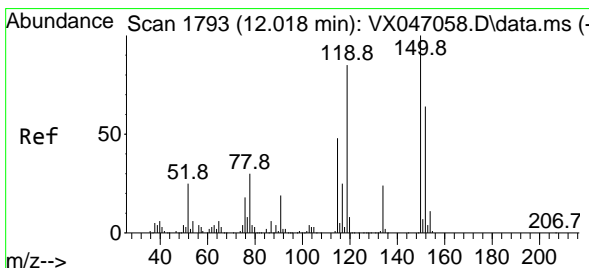
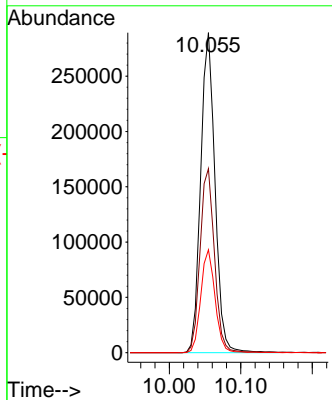
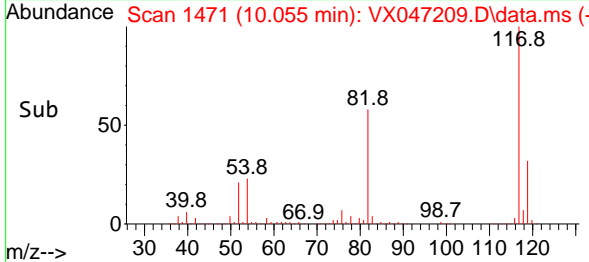


#63
 Chlorobenzene-d5
 Concen: 50.000 ug/l
 RT: 10.055 min Scan# 14
 Delta R.T. -0.000 min
 Lab File: VX047209.D
 Acq: 01 Aug 2025 16:23

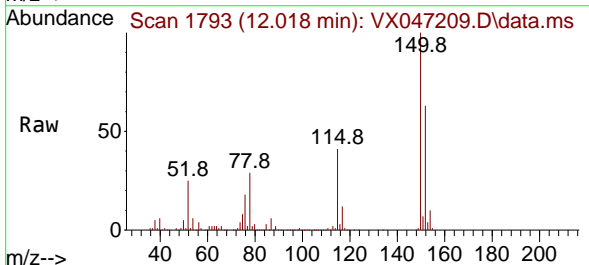
Instrument :
 MSVOA_X
 ClientSampleId :



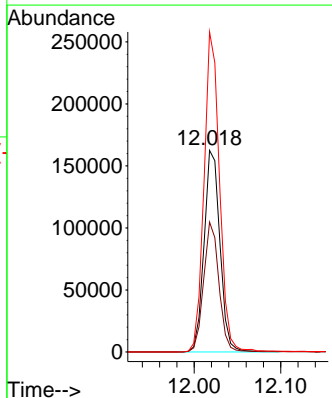
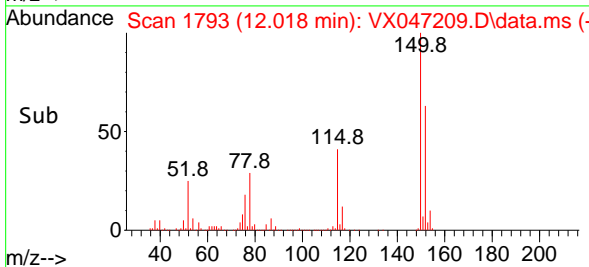
Tgt Ion:117 Resp: 402679
 Ion Ratio Lower Upper
 117 100
 82 57.5 45.4 68.2
 119 32.2 26.1 39.1

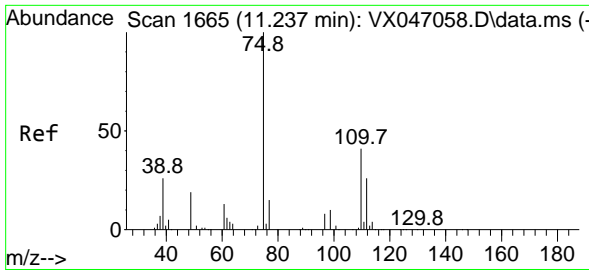


#72
 1,4-Dichlorobenzene-d4
 Concen: 50.000 ug/l
 RT: 12.018 min Scan# 1793
 Delta R.T. 0.000 min
 Lab File: VX047209.D
 Acq: 01 Aug 2025 16:23



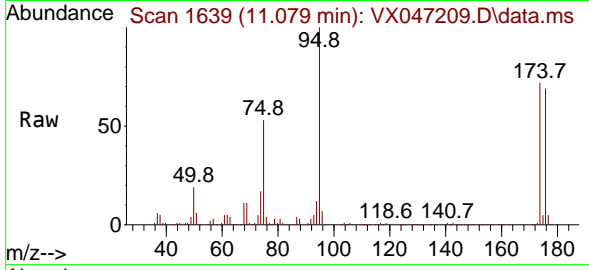
Tgt Ion:152 Resp: 207141
 Ion Ratio Lower Upper
 152 100
 115 62.2 45.6 136.7
 150 155.7 0.0 354.6



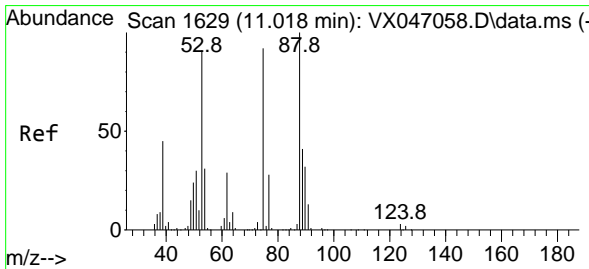
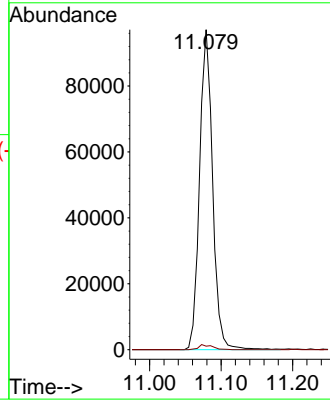
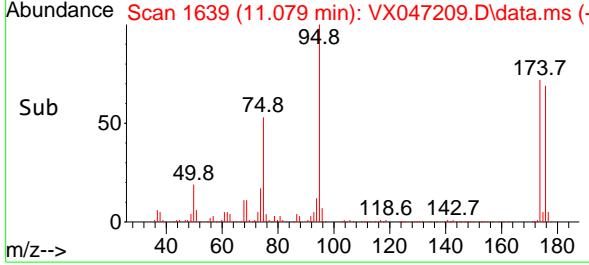


#76
 1,2,3-Trichloropropane
 Concen: 31.957 ug/l
 RT: 11.079 min Scan# 1639
 Delta R.T. -0.158 min
 Lab File: VX047209.D
 Acq: 01 Aug 2025 16:23

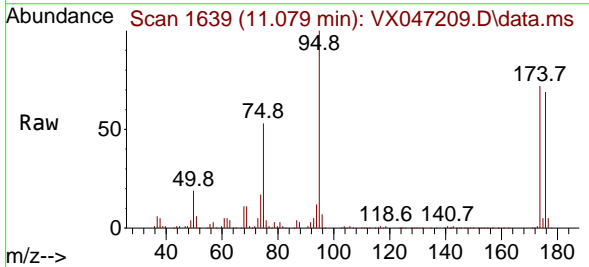
Instrument : MSVOA_X
 ClientSampleId :



Tgt Ion: 75 Resp: 122525
 Ion Ratio Lower Upper
 75 100
 77 1.6 21.6 65.0#



#81
 trans-1,4-Dichloro-2-butene
 Concen: 82.333 ug/l
 RT: 11.079 min Scan# 1639
 Delta R.T. 0.061 min
 Lab File: VX047209.D
 Acq: 01 Aug 2025 16:23



Tgt Ion: 75 Resp: 122525
 Ion Ratio Lower Upper
 75 100
 53 0.0 84.2 126.4#
 89 0.0 36.0 54.0#

