

Data Path : Z:\voasrv\HPCHEM1\MSVOA_X\Data\VX080125\
 Data File : VX047211.D
 Acq On : 01 Aug 2025 17:04
 Operator : JC/MD
 Sample : Q2744-04
 Misc : 5.0mL/MSVOA_X/WATER
 ALS Vial : 11 Sample Multiplier: 1

Instrument :
 MSVOA_X
 ClientSampleId :

Quant Time: Aug 02 00:28:16 2025
 Quant Method : Z:\voasrv\HPCHEM1\MSVOA_X\Method\82X072125W.M
 Quant Title : SW846 8260
 QLast Update : Tue Jul 22 03:59:51 2025
 Response via : Initial Calibration

Compound	R.T.	QIon	Response	Conc	Units	Dev(Min)

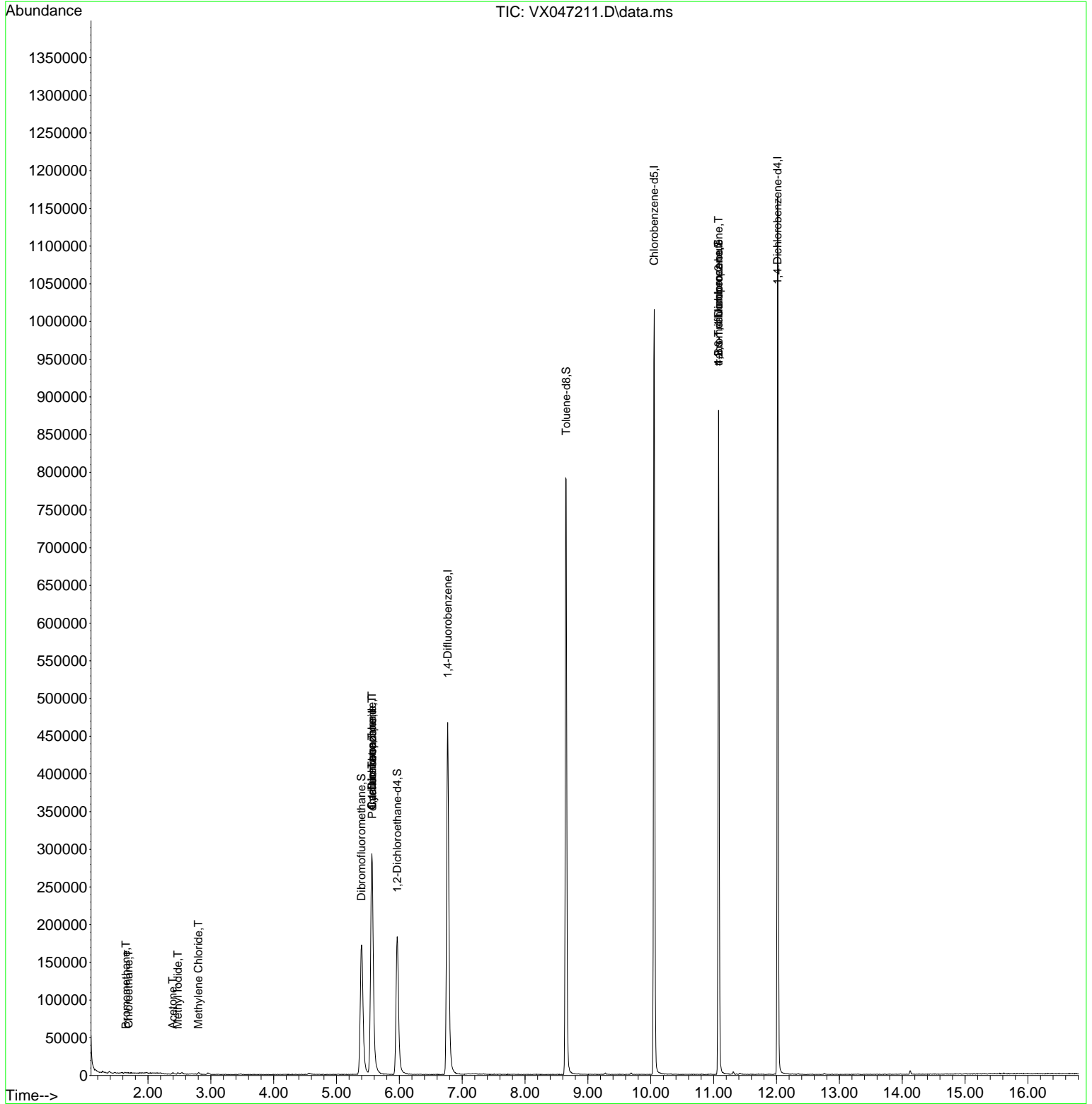
Internal Standards						
1) Pentafluorobenzene	5.568	168	289476	50.000	ug/l	0.00
34) 1,4-Difluorobenzene	6.769	114	495196	50.000	ug/l	0.00
63) Chlorobenzene-d5	10.055	117	453951	50.000	ug/l	0.00
72) 1,4-Dichlorobenzene-d4	12.018	152	225621	50.000	ug/l	0.00
System Monitoring Compounds						
33) 1,2-Dichloroethane-d4	5.964	65	193511	53.664	ug/l	0.00
Spiked Amount	50.000	Range 78 - 117	Recovery	=	107.320%	
35) Dibromofluoromethane	5.397	113	165144	54.013	ug/l	0.00
Spiked Amount	50.000	Range 75 - 124	Recovery	=	108.020%	
50) Toluene-d8	8.653	98	491395	49.628	ug/l	0.00
Spiked Amount	50.000	Range 92 - 112	Recovery	=	99.260%	
62) 4-Bromofluorobenzene	11.079	95	229970	53.894	ug/l	0.00
Spiked Amount	50.000	Range 83 - 123	Recovery	=	107.780%	
Target Compounds						
						Qvalue
5) Bromomethane	1.648	94	606	0.273	ug/l #	50
6) Chloroethane	1.691	64	930	0.346	ug/l #	43
10) Methyl Iodide	2.477	142	2667	0.712	ug/l #	89
11) Tert butyl alcohol	2.965	59	334	Below Cal	#	72
16) Acetone	2.392	43	3472	2.404	ug/l	98
20) Methylene Chloride	2.800	84	1014	0.255	ug/l #	96
31) Cyclohexane	5.562	56	6434	0.954	ug/l #	1
36) 1,1-Dichloropropene	5.562	75	24417	4.685	ug/l #	51
38) Carbon Tetrachloride	5.562	117	30916	5.558	ug/l #	16
76) 1,2,3-Trichloropropane	11.079	75	121936	29.198	ug/l #	35
81) trans-1,4-Dichloro-2-b...	11.079	75	121936	75.226	ug/l #	8

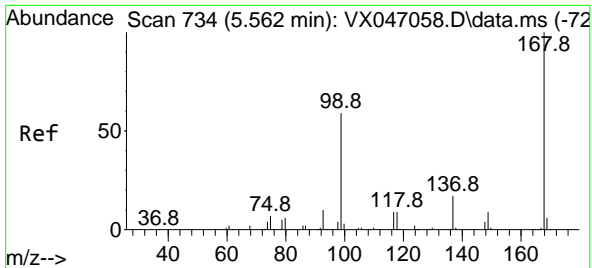
(#) = qualifier out of range (m) = manual integration (+) = signals summed

Data Path : Z:\voasrv\HPCHEM1\MSVOA_X\Data\VX080125\
 Data File : VX047211.D
 Acq On : 01 Aug 2025 17:04
 Operator : JC/MD
 Sample : Q2744-04
 Misc : 5.0mL/MSVOA_X/WATER
 ALS Vial : 11 Sample Multiplier: 1

Instrument :
 MSVOA_X
 ClientSampleId :

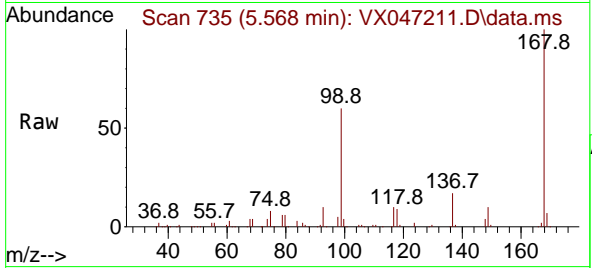
Quant Time: Aug 02 00:28:16 2025
 Quant Method : Z:\voasrv\HPCHEM1\MSVOA_X\Method\82X072125W.M
 Quant Title : SW846 8260
 QLast Update : Tue Jul 22 03:59:51 2025
 Response via : Initial Calibration



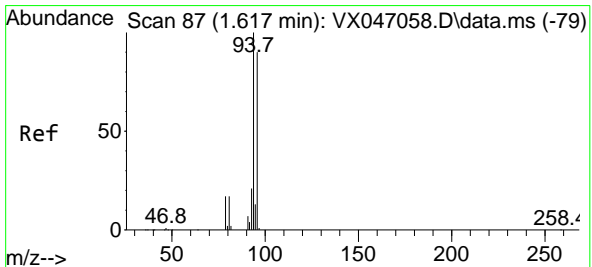
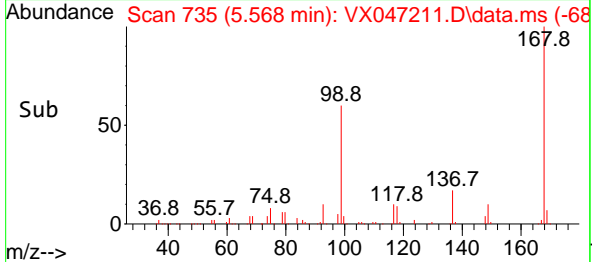
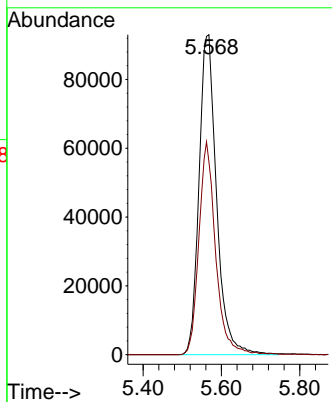


#1
 Pentafluorobenzene
 Concen: 50.000 ug/l
 RT: 5.568 min Scan# 71
 Delta R.T. 0.006 min
 Lab File: VX047211.D
 Acq: 01 Aug 2025 17:04

Instrument :
 MSVOA_X
 ClientSampled :

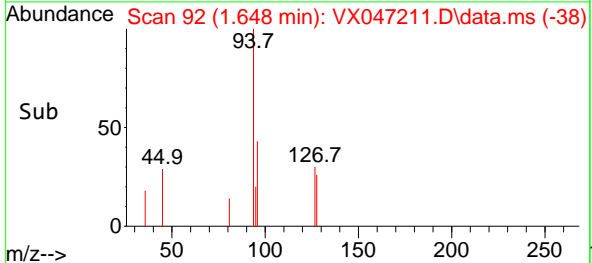
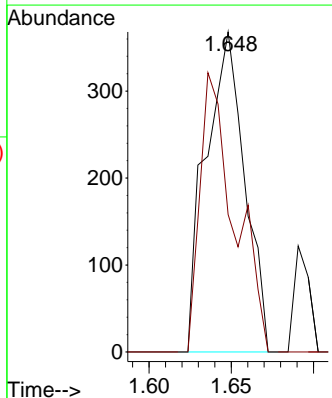
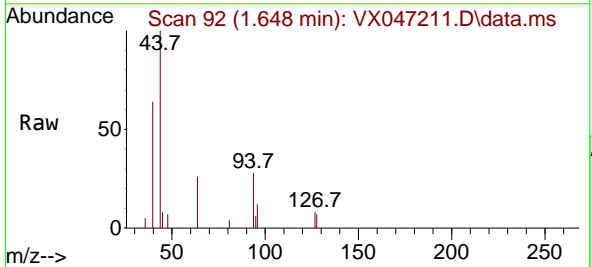


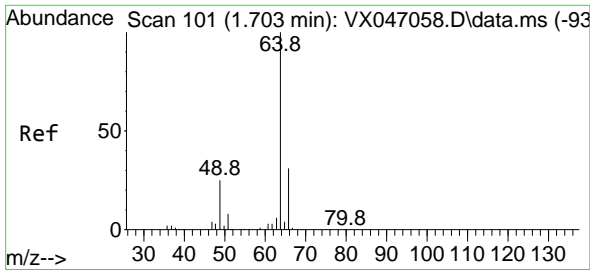
Tgt Ion:168 Resp: 289476
 Ion Ratio Lower Upper
 168 100
 99 60.3 48.0 72.0



#5
 Bromomethane
 Concen: 0.273 ug/l
 RT: 1.648 min Scan# 92
 Delta R.T. 0.031 min
 Lab File: VX047211.D
 Acq: 01 Aug 2025 17:04

Tgt Ion: 94 Resp: 606
 Ion Ratio Lower Upper
 94 100
 96 42.9 72.3 108.5#

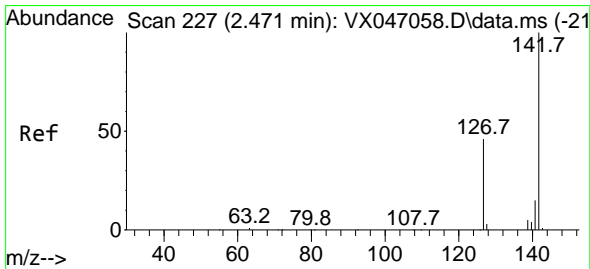
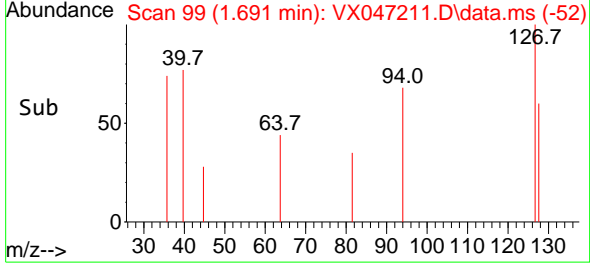
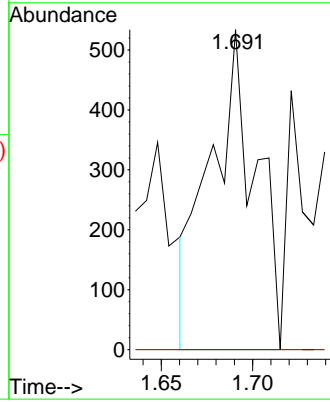
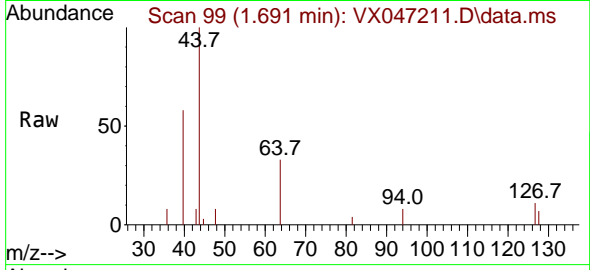




#6
 Chloroethane
 Concen: 0.346 ug/l
 RT: 1.691 min Scan# 99
 Delta R.T. -0.012 min
 Lab File: VX047211.D
 Acq: 01 Aug 2025 17:04

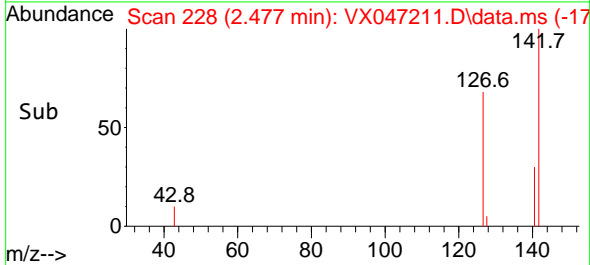
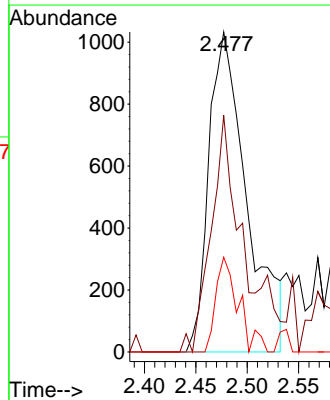
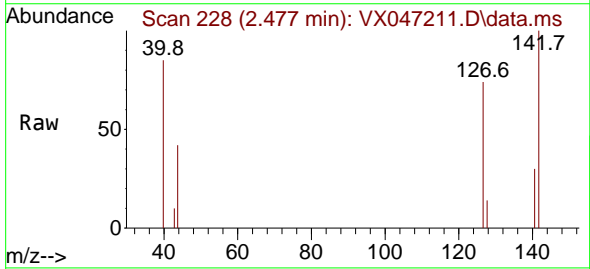
Instrument : MSVOA_X
 ClientSampleId :

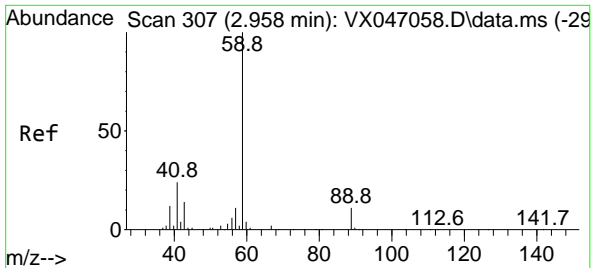
Tgt Ion: 64 Resp: 930
 Ion Ratio Lower Upper
 64 100
 66 0.0 25.0 37.6#



#10
 Methyl Iodide
 Concen: 0.712 ug/l
 RT: 2.477 min Scan# 228
 Delta R.T. 0.006 min
 Lab File: VX047211.D
 Acq: 01 Aug 2025 17:04

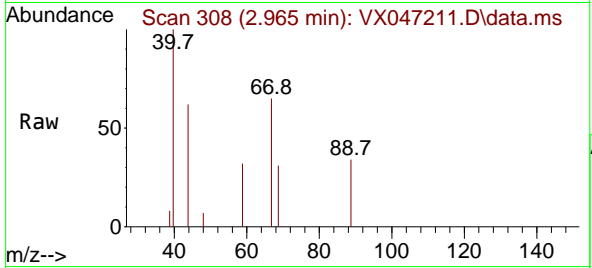
Tgt Ion:142 Resp: 2667
 Ion Ratio Lower Upper
 142 100
 127 53.2 36.6 54.8
 141 17.5 10.9 16.3#



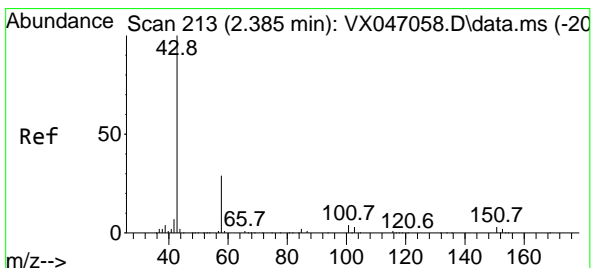
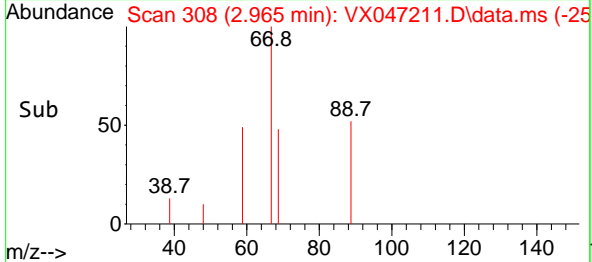
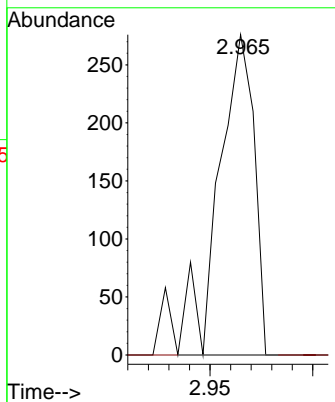


#11
 Tert butyl alcohol
 Concen: Below Cal
 RT: 2.965 min Scan# 30
 Delta R.T. 0.007 min
 Lab File: VX047211.D
 Acq: 01 Aug 2025 17:04

Instrument : MSVOA_X
 Client SampleId :

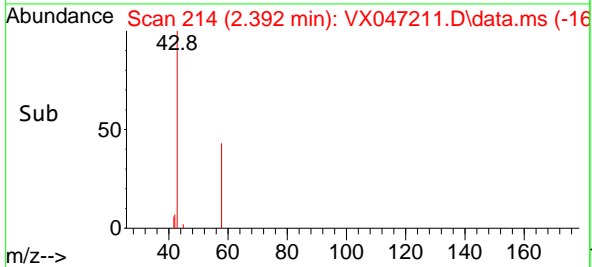
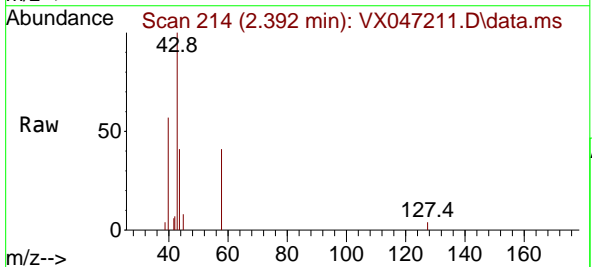
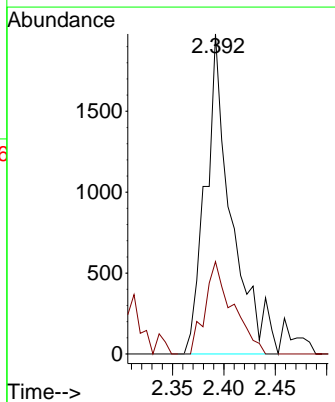


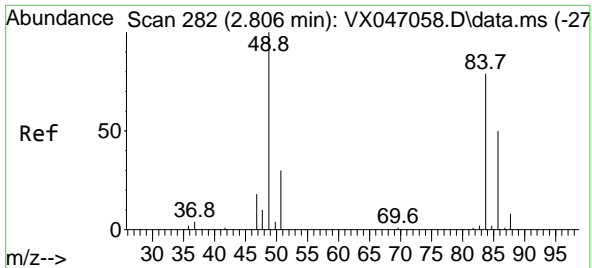
Tgt Ion: 59 Resp: 334
 Ion Ratio Lower Upper
 59 100
 57 0.0 8.5 12.7#



#16
 Acetone
 Concen: 2.404 ug/l
 RT: 2.392 min Scan# 214
 Delta R.T. 0.006 min
 Lab File: VX047211.D
 Acq: 01 Aug 2025 17:04

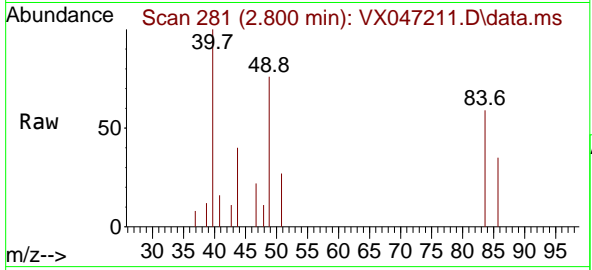
Tgt Ion: 43 Resp: 3472
 Ion Ratio Lower Upper
 43 100
 58 28.9 24.0 36.0



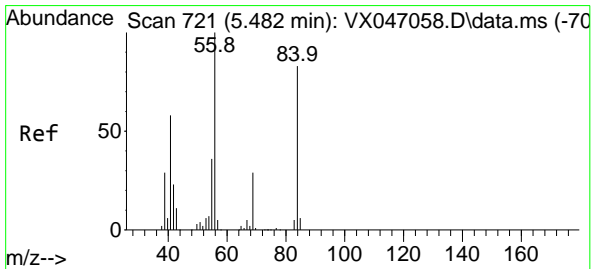
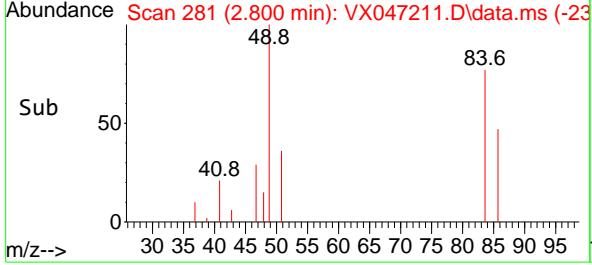
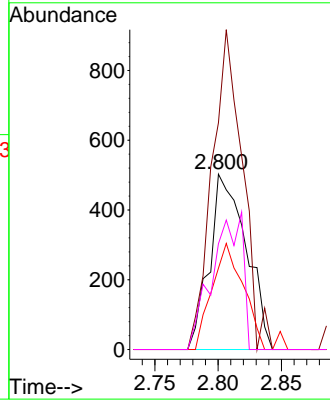


#20
 Methylene Chloride
 Concen: 0.255 ug/l
 RT: 2.800 min Scan# 21
 Delta R.T. -0.006 min
 Lab File: VX047211.D
 Acq: 01 Aug 2025 17:04

Instrument :
 MSVOA_X
 ClientSampleId :

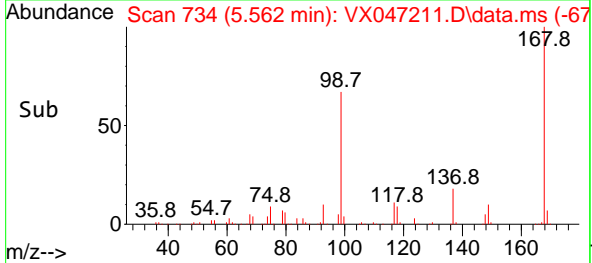
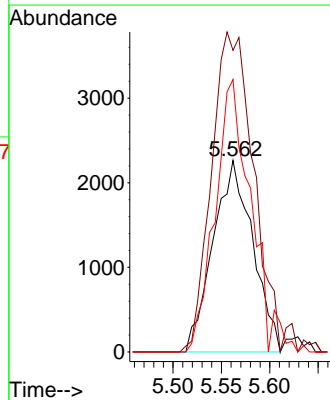
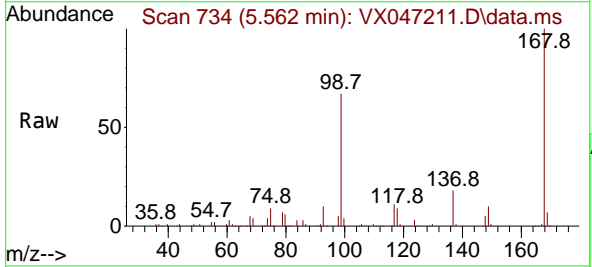


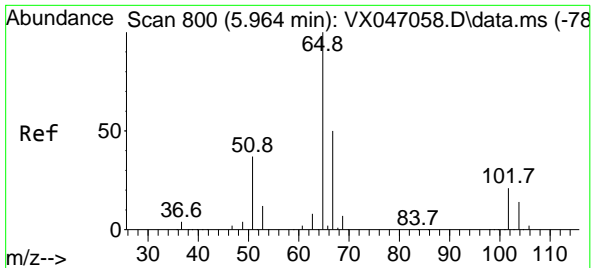
Tgt Ion: 84 Resp: 1014
 Ion Ratio Lower Upper
 84 100
 49 129.2 101.6 152.4
 51 46.3 30.3 45.5#
 86 60.2 50.6 75.8



#31
 Cyclohexane
 Concen: 0.954 ug/l
 RT: 5.562 min Scan# 734
 Delta R.T. 0.080 min
 Lab File: VX047211.D
 Acq: 01 Aug 2025 17:04

Tgt Ion: 56 Resp: 6434
 Ion Ratio Lower Upper
 56 100
 69 157.5 23.3 34.9#
 84 142.3 66.5 99.7#

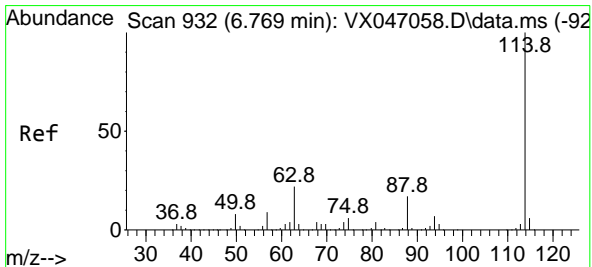
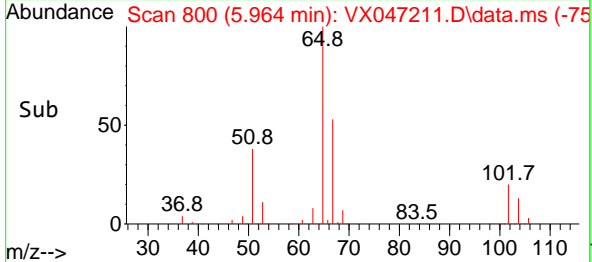
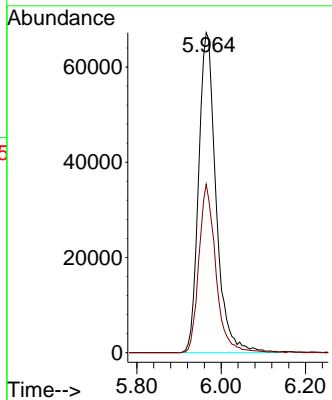
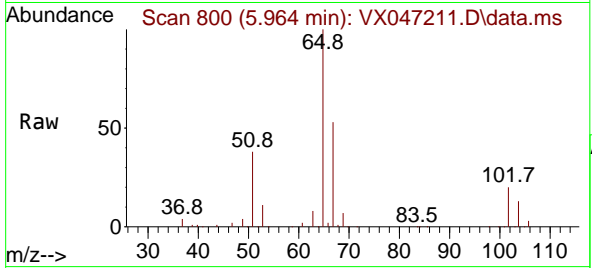




#33
 1,2-Dichloroethane-d4
 Concen: 53.664 ug/l
 RT: 5.964 min Scan# 800
 Delta R.T. 0.000 min
 Lab File: VX047211.D
 Acq: 01 Aug 2025 17:04

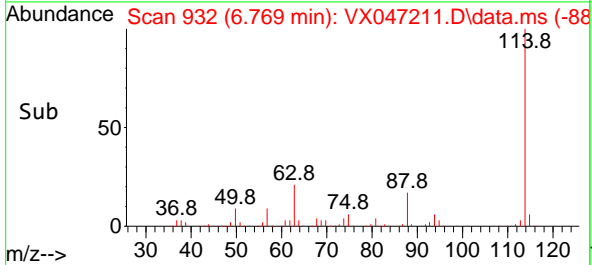
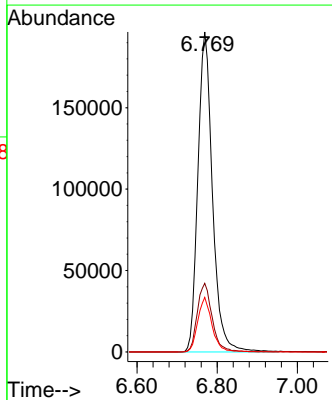
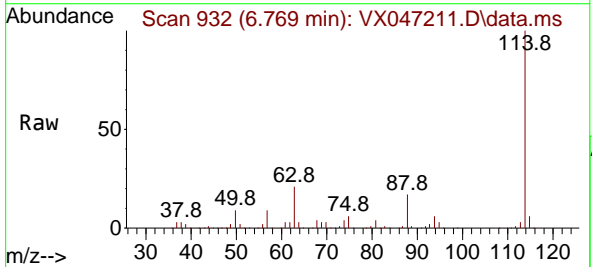
Instrument :
 MSVOA_X
 ClientSampleId :

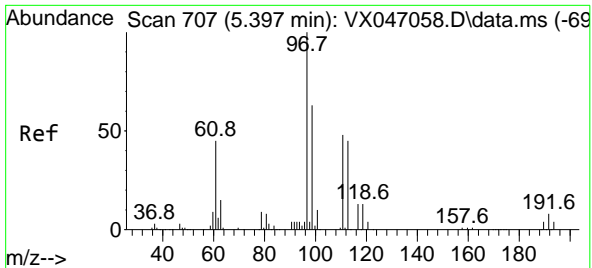
Tgt Ion: 65 Resp: 193511
 Ion Ratio Lower Upper
 65 100
 67 51.1 0.0 104.8



#34
 1,4-Difluorobenzene
 Concen: 50.000 ug/l
 RT: 6.769 min Scan# 932
 Delta R.T. 0.000 min
 Lab File: VX047211.D
 Acq: 01 Aug 2025 17:04

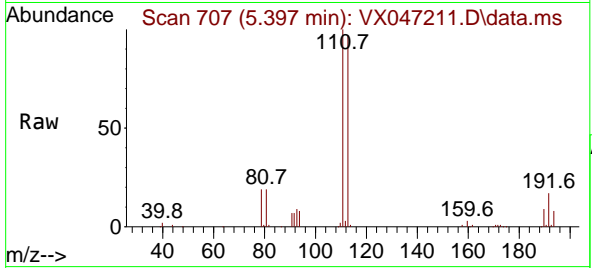
Tgt Ion: 114 Resp: 495196
 Ion Ratio Lower Upper
 114 100
 63 21.5 0.0 43.2
 88 17.0 0.0 33.8



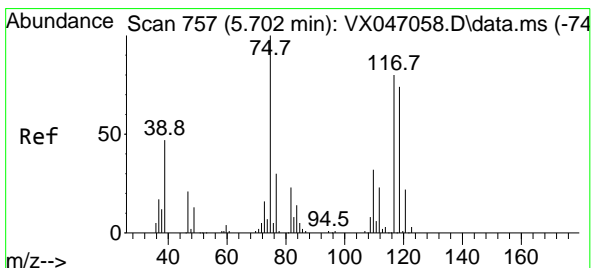
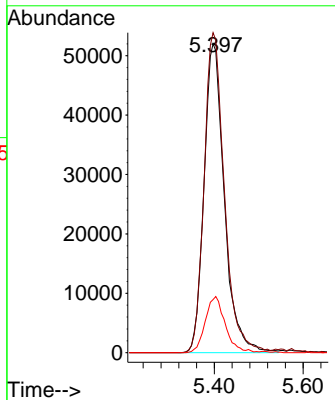
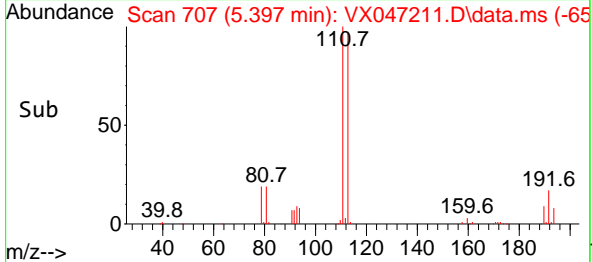


#35
 Dibromofluoromethane
 Concen: 54.013 ug/l
 RT: 5.397 min Scan# 707
 Delta R.T. 0.000 min
 Lab File: VX047211.D
 Acq: 01 Aug 2025 17:04

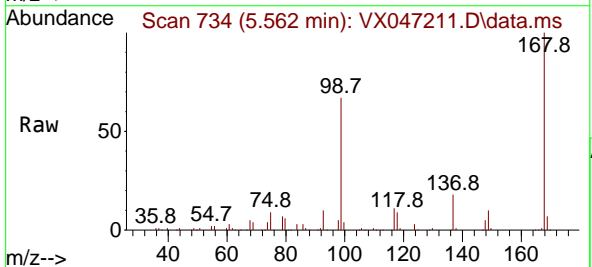
Instrument : MSVOA_X
 ClientSampleId :



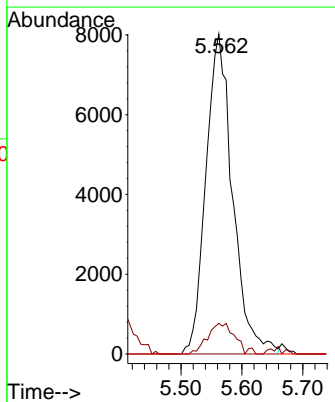
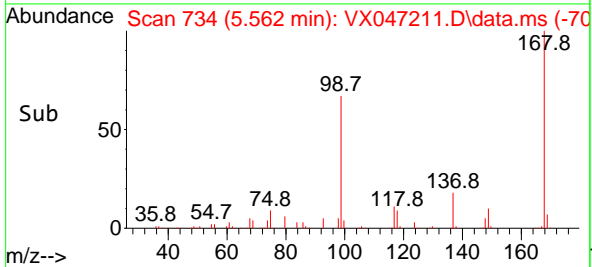
Tgt Ion: 113 Resp: 165144
 Ion Ratio Lower Upper
 113 100
 111 103.4 82.6 124.0
 192 17.9 14.9 22.3

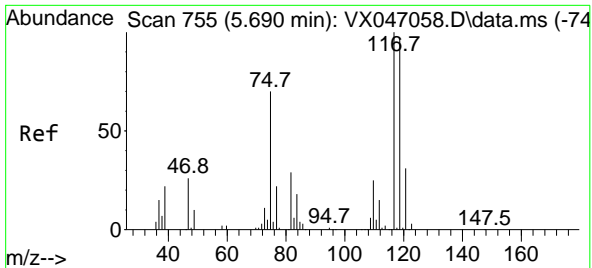


#36
 1,1-Dichloropropene
 Concen: 4.685 ug/l
 RT: 5.562 min Scan# 734
 Delta R.T. -0.140 min
 Lab File: VX047211.D
 Acq: 01 Aug 2025 17:04



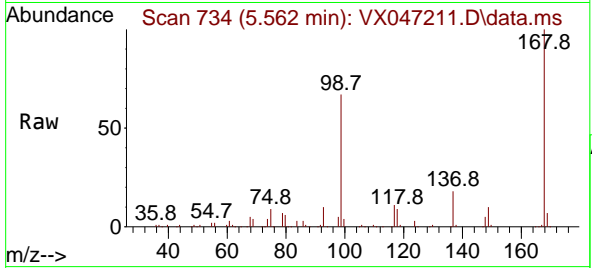
Tgt Ion: 75 Resp: 24417
 Ion Ratio Lower Upper
 75 100
 110 9.8 17.2 51.5#
 77 0.0 25.1 37.7#



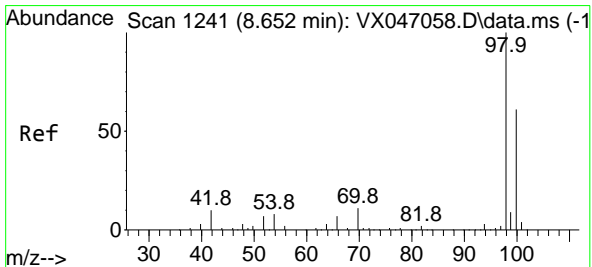
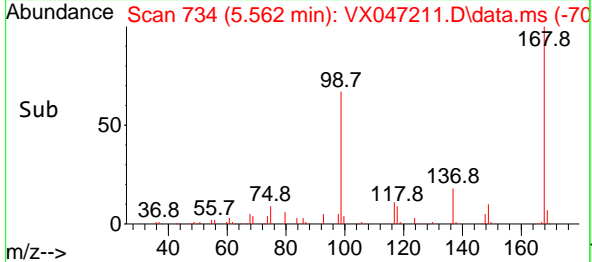
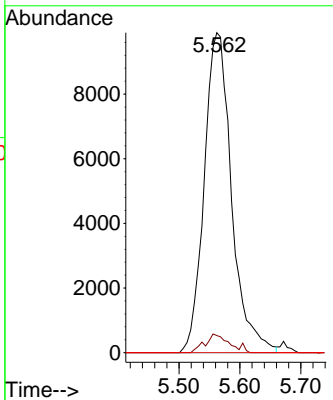


#38
 Carbon Tetrachloride
 Concen: 5.558 ug/l
 RT: 5.562 min Scan# 71
 Delta R.T. -0.128 min
 Lab File: VX047211.D
 Acq: 01 Aug 2025 17:04

Instrument :
 MSVOA_X
 ClientSampleId :

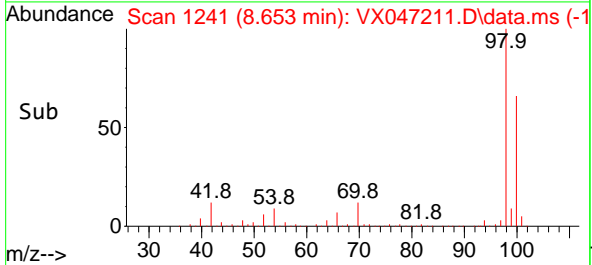
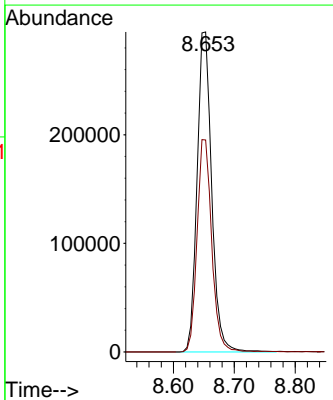
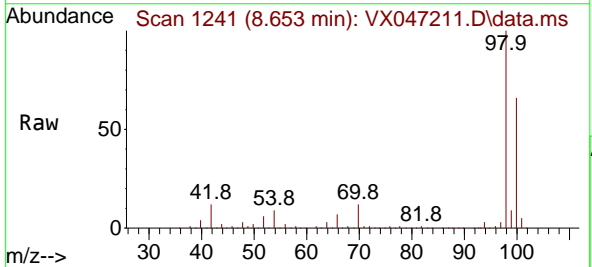


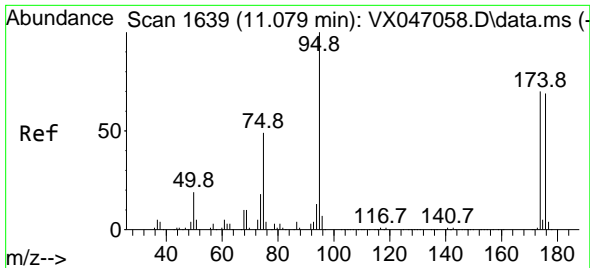
Tgt Ion:117 Resp: 30916
 Ion Ratio Lower Upper
 117 100
 119 5.4 76.6 115.0#
 121 0.0 24.4 36.6#



#50
 Toluene-d8
 Concen: 49.628 ug/l
 RT: 8.653 min Scan# 1241
 Delta R.T. 0.000 min
 Lab File: VX047211.D
 Acq: 01 Aug 2025 17:04

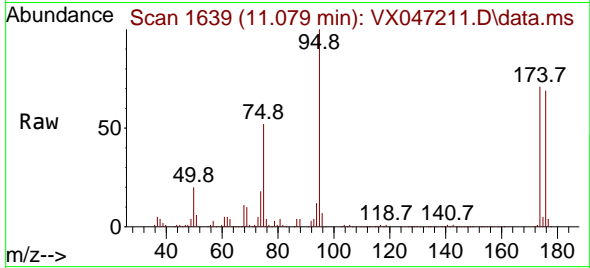
Tgt Ion: 98 Resp: 491395
 Ion Ratio Lower Upper
 98 100
 100 66.6 53.3 79.9



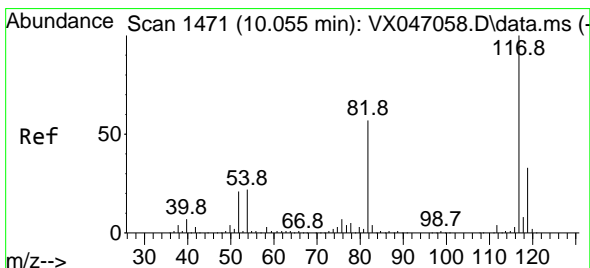
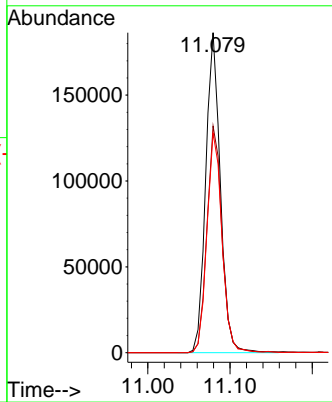
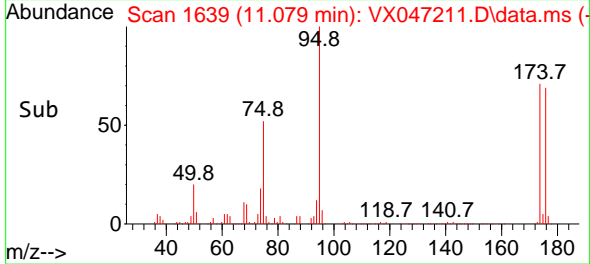


#62
 4-Bromofluorobenzene
 Concen: 53.894 ug/l
 RT: 11.079 min Scan# 1639
 Delta R.T. 0.000 min
 Lab File: VX047211.D
 Acq: 01 Aug 2025 17:04

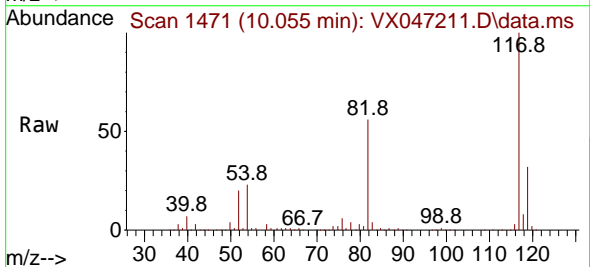
Instrument : MSVOA_X
 ClientSampleId :



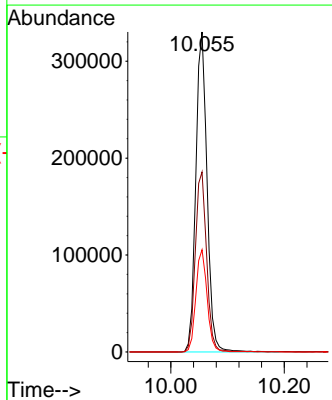
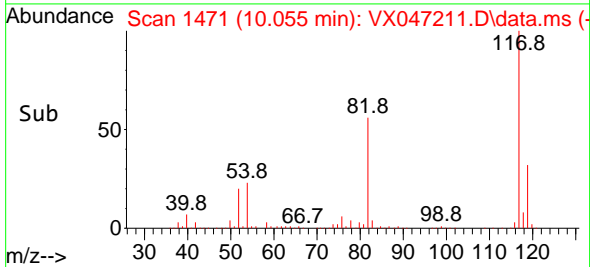
Tgt Ion: 95 Resp: 229970
 Ion Ratio Lower Upper
 95 100
 174 73.0 0.0 144.6
 176 70.7 0.0 139.6

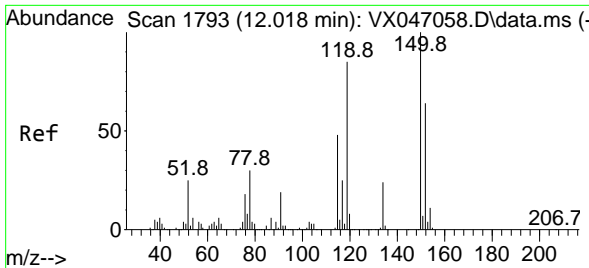


#63
 Chlorobenzene-d5
 Concen: 50.000 ug/l
 RT: 10.055 min Scan# 1471
 Delta R.T. 0.000 min
 Lab File: VX047211.D
 Acq: 01 Aug 2025 17:04



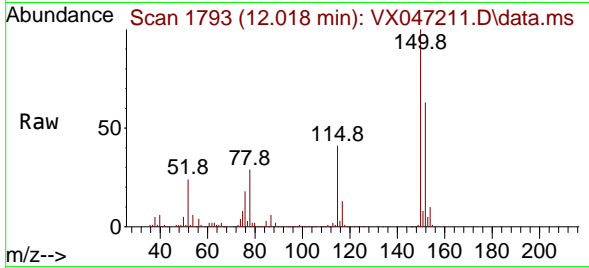
Tgt Ion: 117 Resp: 453951
 Ion Ratio Lower Upper
 117 100
 82 56.3 45.4 68.2
 119 32.0 26.1 39.1



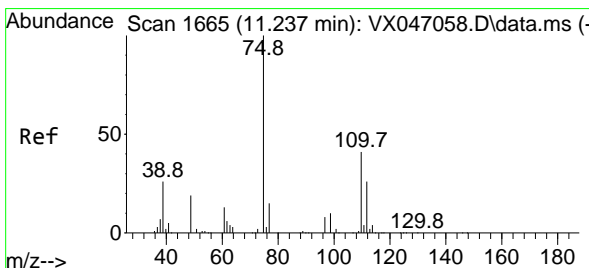
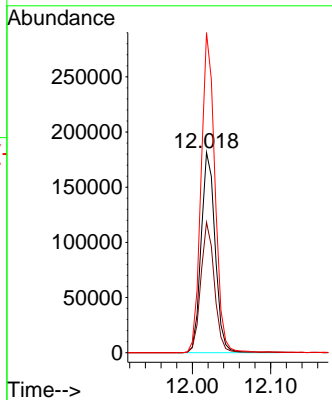
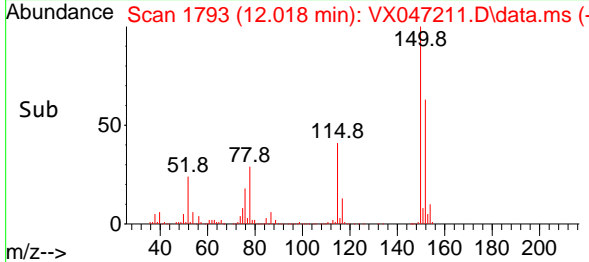


#72
 1,4-Dichlorobenzene-d4
 Concen: 50.000 ug/l
 RT: 12.018 min Scan# 11
 Delta R.T. 0.000 min
 Lab File: VX047211.D
 Acq: 01 Aug 2025 17:04

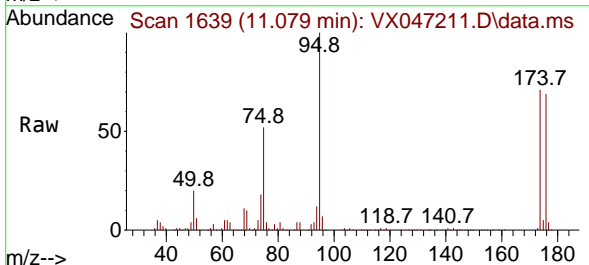
Instrument :
 MSVOA_X
 ClientSampleId :



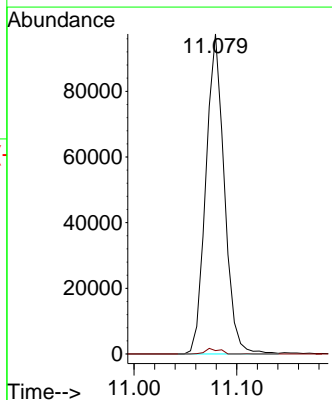
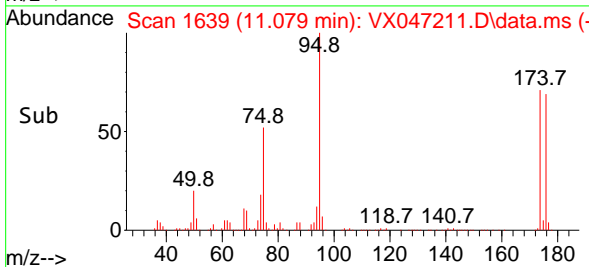
Tgt Ion:152 Resp: 225621
 Ion Ratio Lower Upper
 152 100
 115 63.5 45.6 136.7
 150 158.1 0.0 354.6

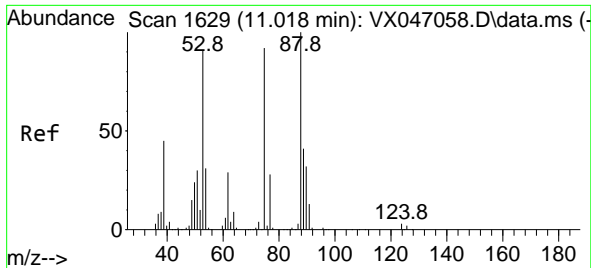


#76
 1,2,3-Trichloropropane
 Concen: 29.198 ug/l
 RT: 11.079 min Scan# 1639
 Delta R.T. -0.158 min
 Lab File: VX047211.D
 Acq: 01 Aug 2025 17:04



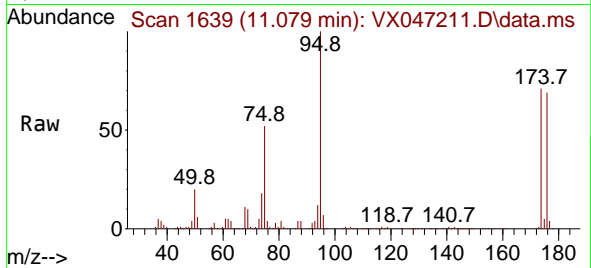
Tgt Ion: 75 Resp: 121936
 Ion Ratio Lower Upper
 75 100
 77 1.4 21.6 65.0#





#81
 trans-1,4-Dichloro-2-butene
 Concen: 75.226 ug/l
 RT: 11.079 min Scan# 10
 Delta R.T. 0.061 min
 Lab File: VX047211.D
 Acq: 01 Aug 2025 17:04

Instrument :
 MSVOA_X
 ClientSampleId :



Tgt Ion: 75 Resp: 121936
 Ion Ratio Lower Upper
 75 100
 53 0.0 84.2 126.4#
 89 0.0 36.0 54.0#

