

Data Path : Z:\VOASRV\HPCHEM1\MSVOA X\DATA\VX080218\
 Data File : VX003822.D
 Acq On : 02 Aug 2018 13:51
 Operator : JC/MD
 Sample : J4233-01
 Misc : 5.0mL/MSVOA X/WATER
 ALS Vial : 5 Sample Multiplier: 1

Instrument :
 MSVOA_X
 ClientSampleId :
 CAP-1

Quant Time: Aug 03 03:20:16 2018
 Quant Method : Z:\VOASRV\HPCHEM1\MSVOA X\METHOD\624X072718W.M
 Quant Title : METHOD 624 VOLATILE ORGANIC ANALYSIS
 QLast Update : Fri Jul 27 16:17:43 2018
 Response via : Initial Calibration

Internal Standards	R.T.	QIon	Response	Conc	Units	Dev(Min)
1) Bromochloromethane	5.01	128	11462	30.00	ug/l	-0.01
28) 1,4-Difluorobenzene	6.87	114	114304	30.00	ug/l	0.00
57) Chlorobenzene-d5	10.12	117	103110	30.00	ug/l	0.00

System Monitoring Compounds

27) 1,2-Dichloroethane-d4	6.07	65	45485	54.05	ug/l	0.00
Spiked Amount	30.000	Range	50 - 169	Recovery	=	180.17%#
60) 4-Bromofluorobenzene	11.14	95	43937	26.46	ug/l	0.00
Spiked Amount	30.000	Range	56 - 143	Recovery	=	88.20%
63) Toluene-d8	8.72	98	134510	28.96	ug/l	0.00
Spiked Amount	30.000	Range	66 - 137	Recovery	=	96.53%

Target Compounds

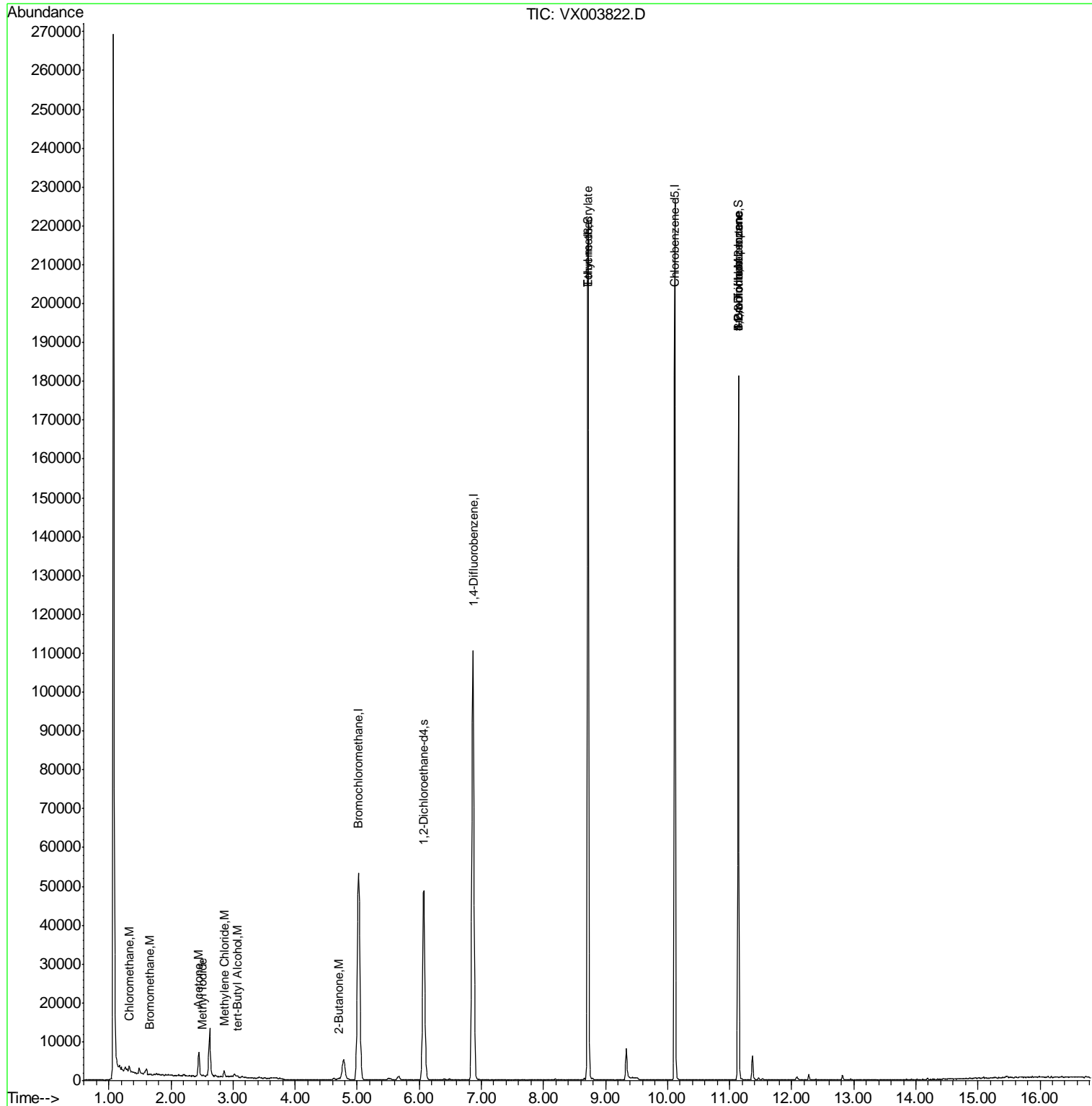
						Ovalue
3) Chloromethane	1.32	50	1464	1.80	ug/l	97
5) Bromomethane	1.65	94	213	0.42	ug/l #	78
11) Methyl Iodide	2.51	142	313	0.34	ug/l #	85
15) Acetone	2.45	58	2127	16.36	ug/l #	68
18) Methylene Chloride	2.86	84	622	0.80	ug/l #	84
23) tert-Butyl Alcohol	3.07	59	76	0.38	ug/l #	100
30) 2-Butanone	4.71	43	919	0.85	ug/l #	82
51) Ethyl methacrylate	8.73	69	466	0.22	ug/l	90
56) Bromoform	11.14	173	451	0.42	ug/l #	1
72) 1,2,3-Trichloropropane	11.14	75	21157	11.92	ug/l	41
77) t-1,4-Dichloro-2-butene	11.14	75	21157	34.99	ug/l #	11

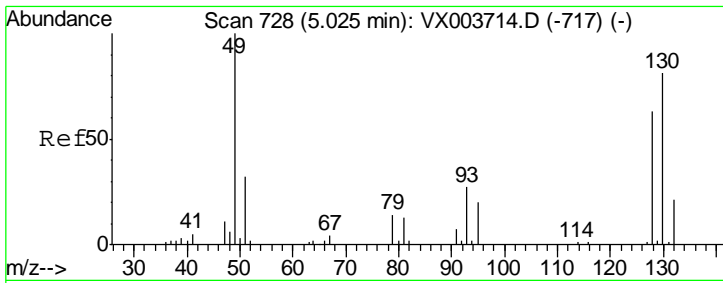
(#) = qualifier out of range (m) = manual integration (+) = signals summed

Data Path : Z:\VOASRV\HPCHEM1\MSVOA X\DATA\VX080218\
 Data File : VX003822.D
 Acq On : 02 Aug 2018 13:51
 Operator : JC/MD
 Sample : J4233-01
 Misc : 5.0mL/MSVOA X/WATER
 ALS Vial : 5 Sample Multiplier: 1

Instrument :
 MSVOA_X
 ClientSampled :
 CAP-1

Quant Time: Aug 03 03:20:16 2018
 Quant Method : Z:\VOASRV\HPCHEM1\MSVOA X\METHOD\624X072718W.M
 Quant Title : METHOD 624 VOLATILE ORGANIC ANALYSIS
 QLast Update : Fri Jul 27 16:17:43 2018
 Response via : Initial Calibration

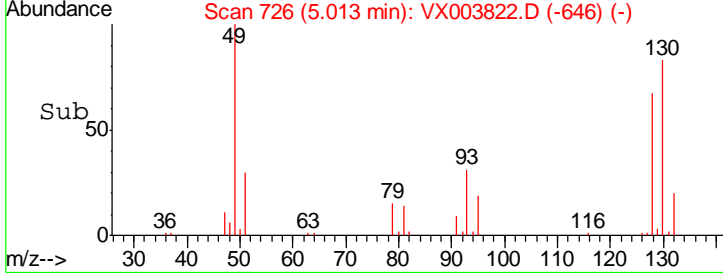
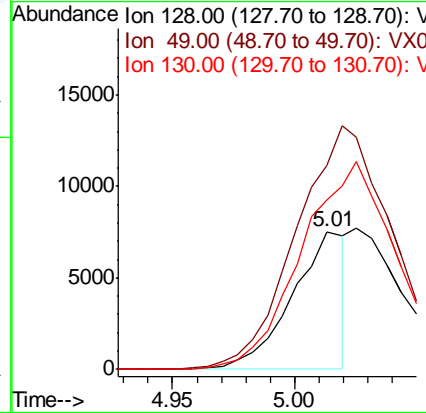
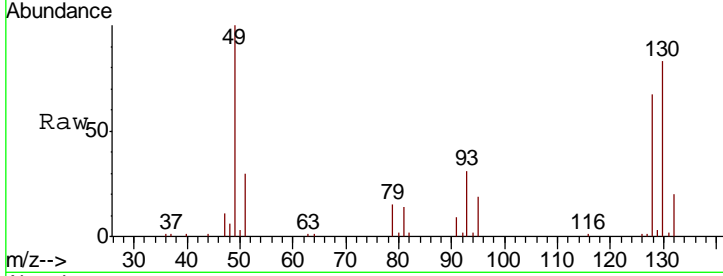




#1
 Bromochloromethane
 Concen: 30.00 ug/l
 RT: 5.01 min Scan# 726
 Delta R.T. -0.01 min
 Lab File: VX003822.D
 Acq: 02 Aug 2018 13:51

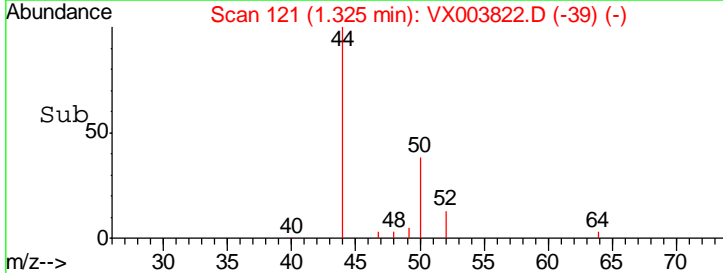
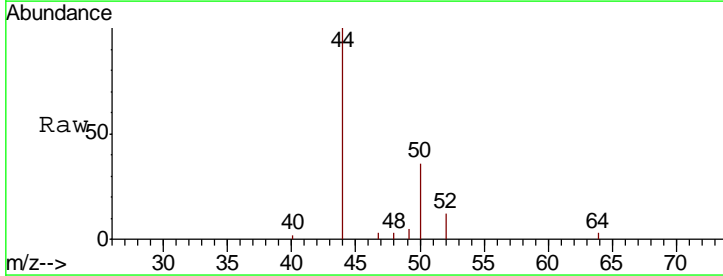
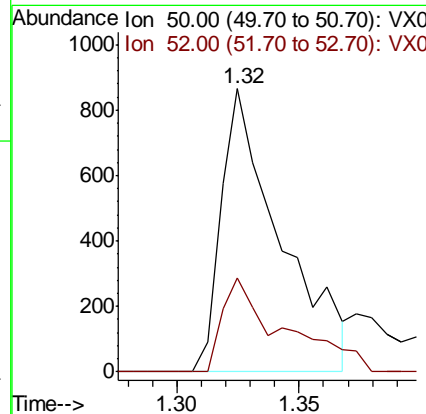
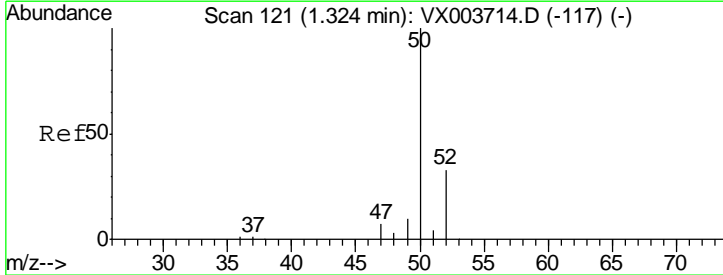
Instrument :
 MSVOA_X
 ClientSampled :
 CAP-1

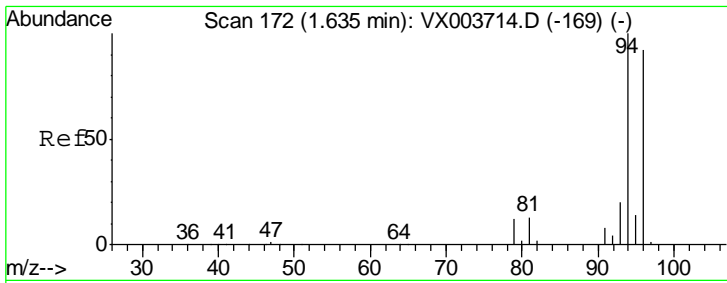
Tgt Ion	Resp	Lower	Upper
128	11462		
49	320.5	0.0	423.0
130	269.4	0.0	324.3



#3
 Chloromethane
 Concen: 1.80 ug/l
 RT: 1.32 min Scan# 121
 Delta R.T. 0.00 min
 Lab File: VX003822.D
 Acq: 02 Aug 2018 13:51

Tgt Ion	Resp	Lower	Upper
50	1464		
52	33.4	25.6	38.4

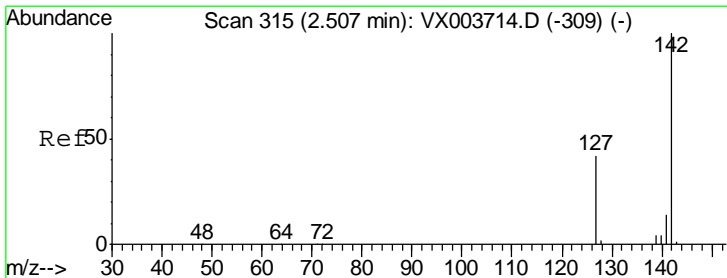
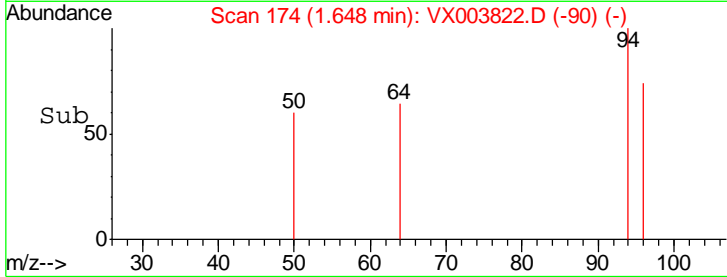
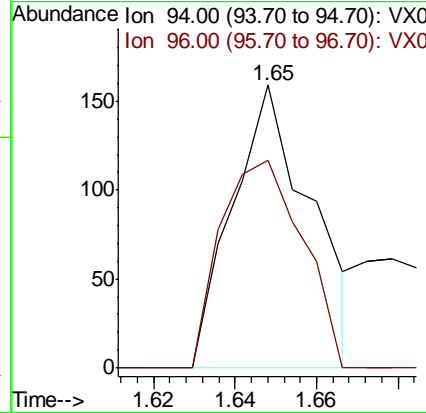
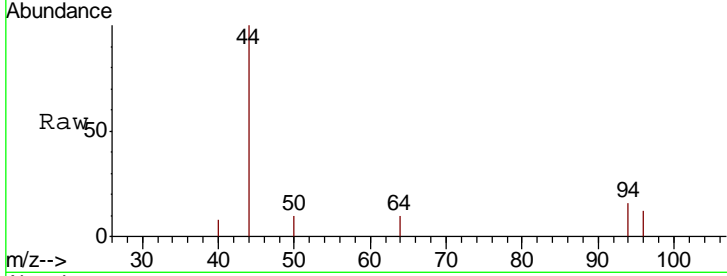




#5
 Bromomethane
 Concen: 0.42 ug/l
 RT: 1.65 min Scan# 174
 Delta R.T. 0.01 min
 Lab File: VX003822.D
 Acq: 02 Aug 2018 13:51

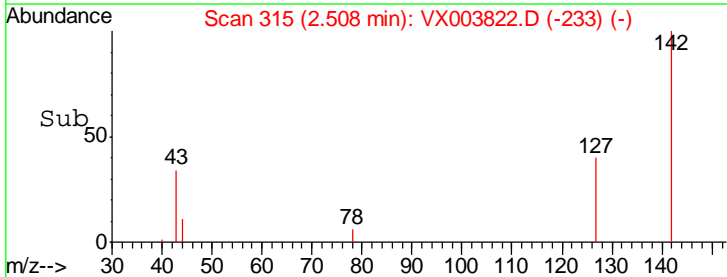
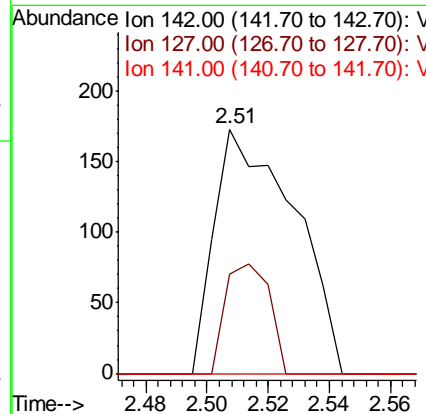
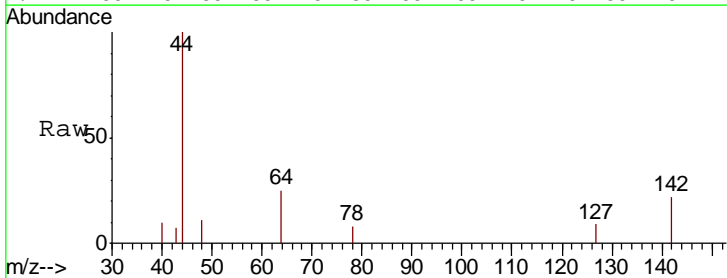
Instrument :
 MSVOA_X
 ClientSampled :
 CAP-1

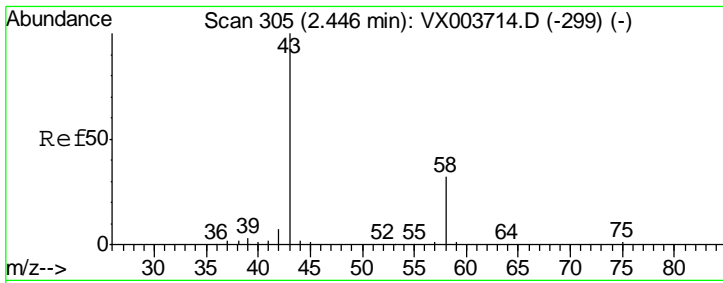
Tgt Ion: 94 Resp: 213
 Ion Ratio Lower Upper
 94 100
 96 73.6 75.7 113.5#



#11
 Methyl Iodide
 Concen: 0.34 ug/l
 RT: 2.51 min Scan# 315
 Delta R.T. 0.00 min
 Lab File: VX003822.D
 Acq: 02 Aug 2018 13:51

Tgt Ion: 142 Resp: 313
 Ion Ratio Lower Upper
 142 100
 127 40.5 23.2 69.6
 141 0.0 7.4 22.2#

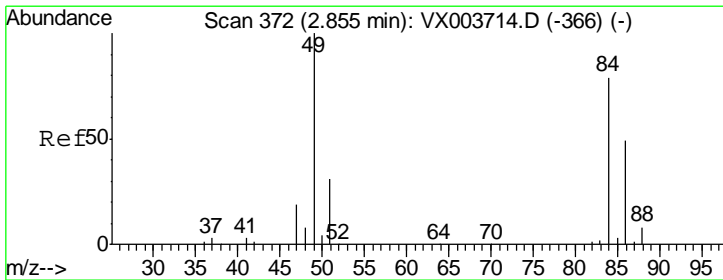
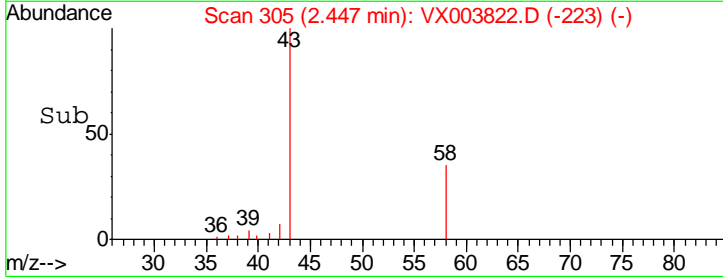
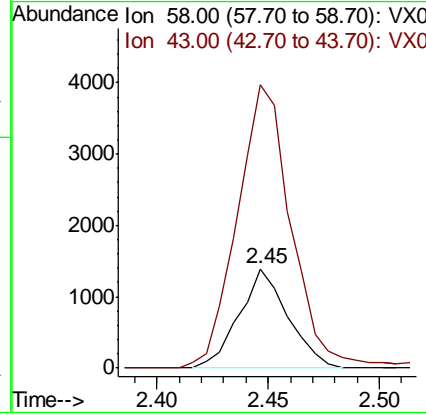
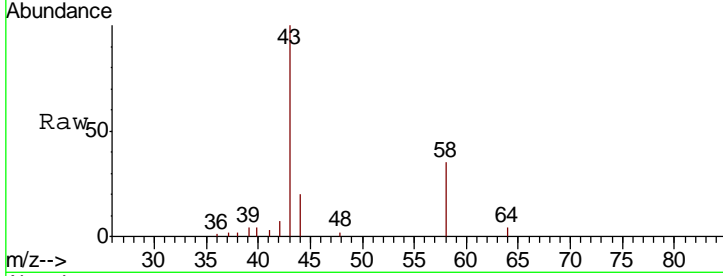




#15
 Acetone
 Concen: 16.36 ug/l
 RT: 2.45 min Scan# 305
 Delta R.T. 0.00 min
 Lab File: VX003822.D
 Acq: 02 Aug 2018 13:51

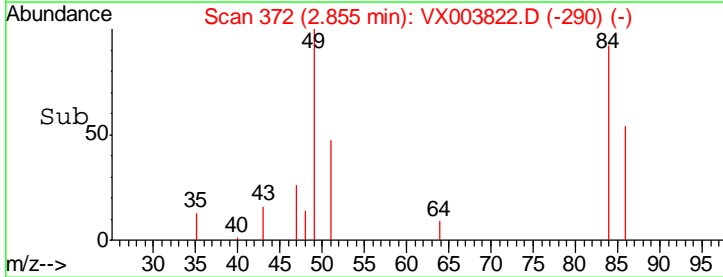
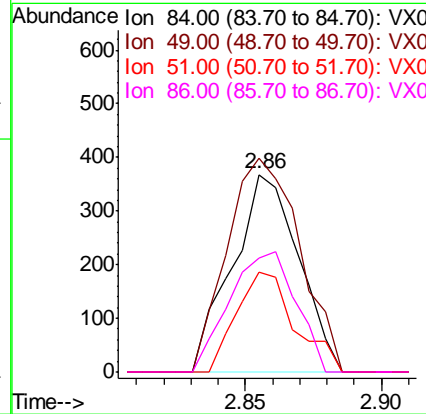
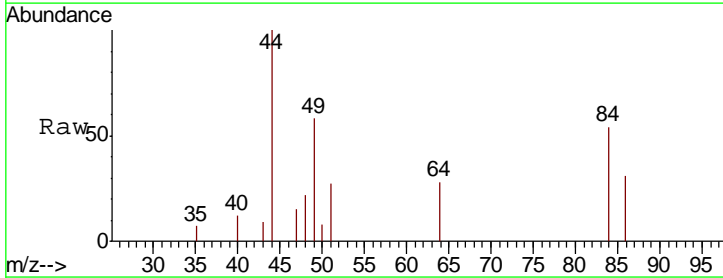
Instrument :
 MSVOA_X
 ClientSampled :
 CAP-1

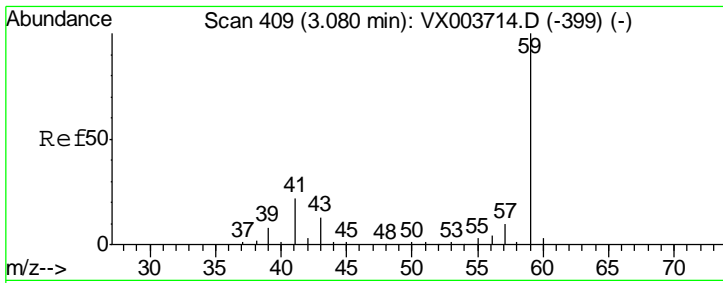
Tgt Ion: 58 Resp: 2127
 Ion Ratio Lower Upper
 58 100
 43 278.7 278.8 418.2#



#18
 Methylene Chloride
 Concen: 0.80 ug/l
 RT: 2.86 min Scan# 372
 Delta R.T. 0.00 min
 Lab File: VX003822.D
 Acq: 02 Aug 2018 13:51

Tgt Ion: 84 Resp: 622
 Ion Ratio Lower Upper
 84 100
 49 108.2 104.7 157.1
 51 50.5 31.0 46.4#
 86 57.9 50.8 76.2

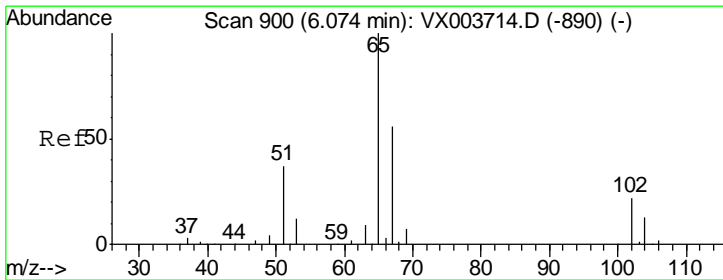
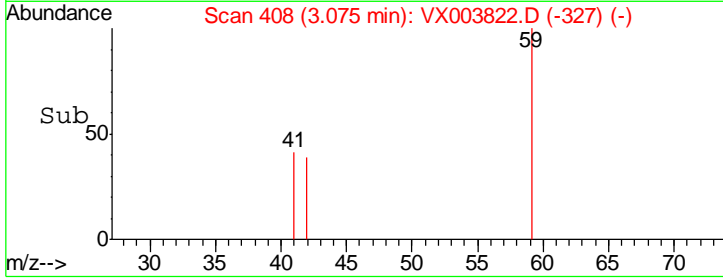
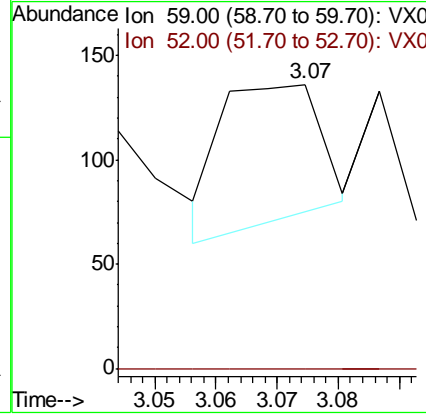
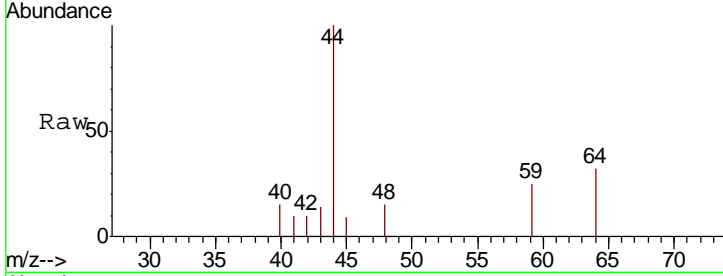




#23
 tert-Butyl Alcohol
 Concen: 0.38 ug/l
 RT: 3.07 min Scan# 408
 Delta R.T. -0.01 min
 Lab File: VX003822.D
 Acq: 02 Aug 2018 13:51

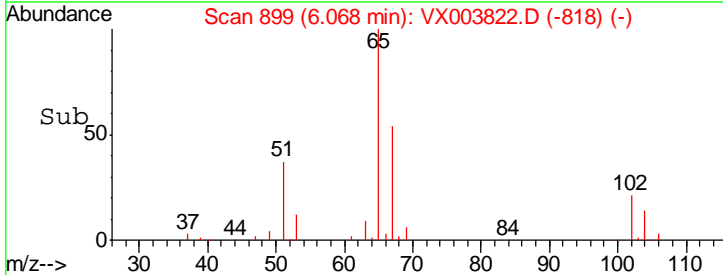
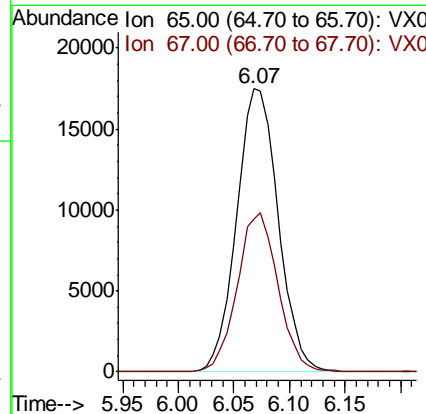
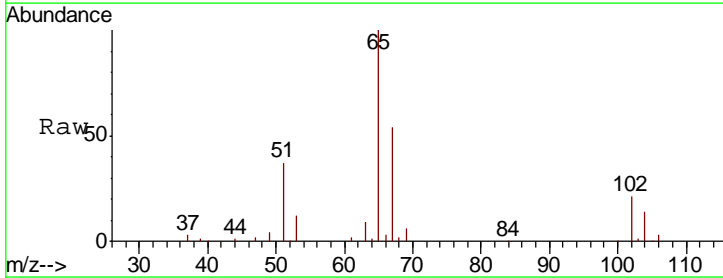
Instrument :
 MSVOA_X
 ClientSampled :
 CAP-1

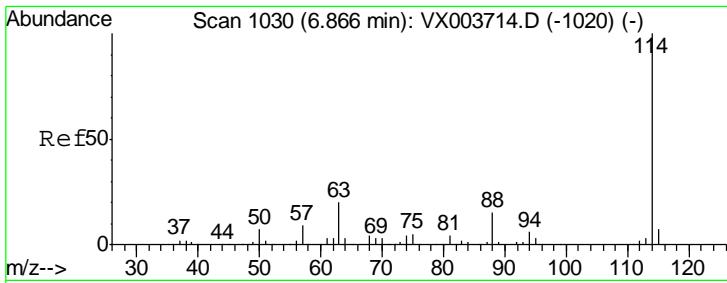
Tgt Ion	Resp	Lower	Upper
59	100		
52	0.0	0.2	0.2#



#27
 1,2-Dichloroethane-d4
 Concen: 54.05 ug/l
 RT: 6.07 min Scan# 899
 Delta R.T. -0.01 min
 Lab File: VX003822.D
 Acq: 02 Aug 2018 13:51

Tgt Ion	Resp	Lower	Upper
65	100		
67	54.9	40.9	61.3

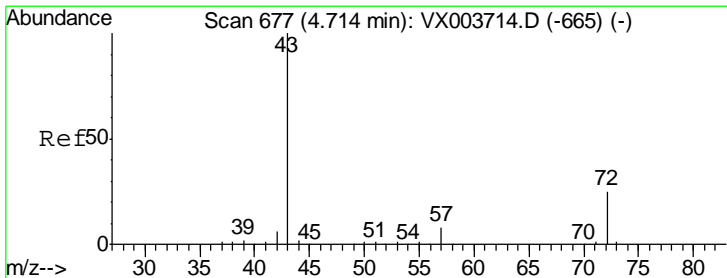
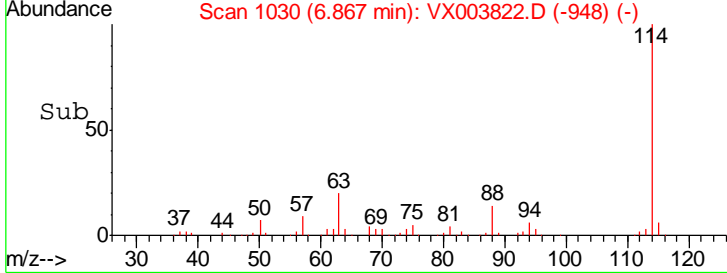
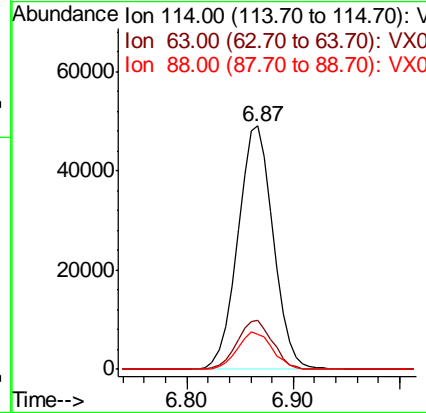
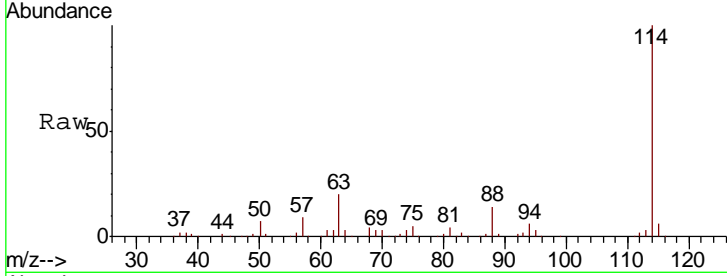




#28
 1,4-Difluorobenzene
 Concen: 30.00 ug/l
 RT: 6.87 min Scan# 1030
 Delta R.T. 0.00 min
 Lab File: VX003822.D
 Acq: 02 Aug 2018 13:51

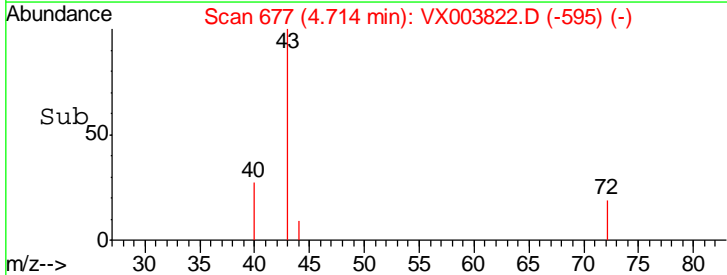
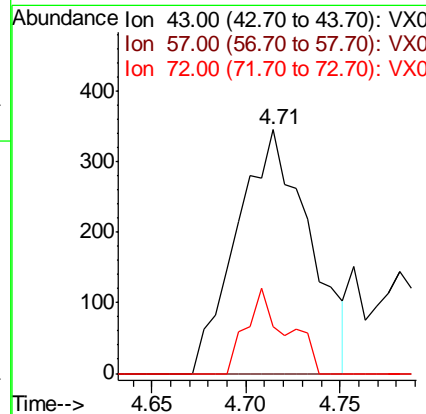
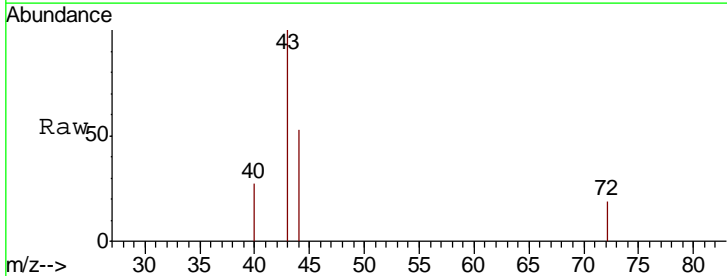
Instrument :
 MSVOA_X
 ClientSampled :
 CAP-1

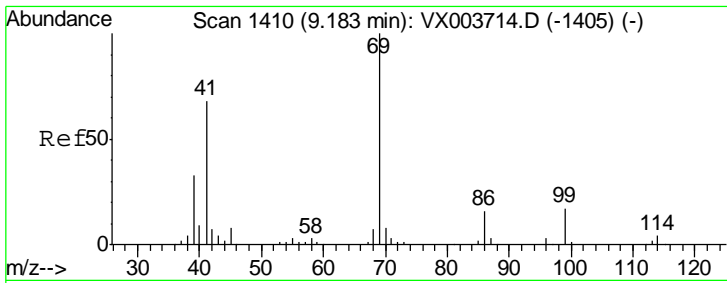
Tgt Ion	Resp	Lower	Upper
114	114304		
63	20.3	17.1	25.7
88	15.3	12.6	19.0



#30
 2-Butanone
 Concen: 0.85 ug/l
 RT: 4.71 min Scan# 677
 Delta R.T. 0.00 min
 Lab File: VX003822.D
 Acq: 02 Aug 2018 13:51

Tgt Ion	Resp	Lower	Upper
43	919		
57	0.0	6.1	9.1#
72	14.6	18.1	27.1#

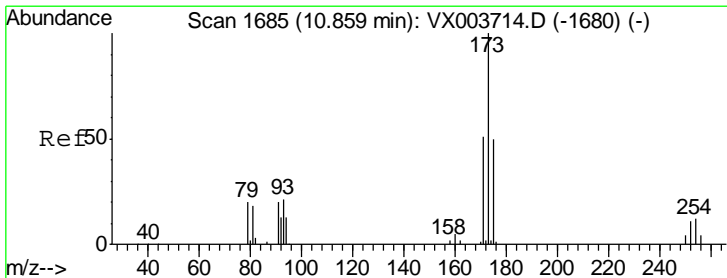
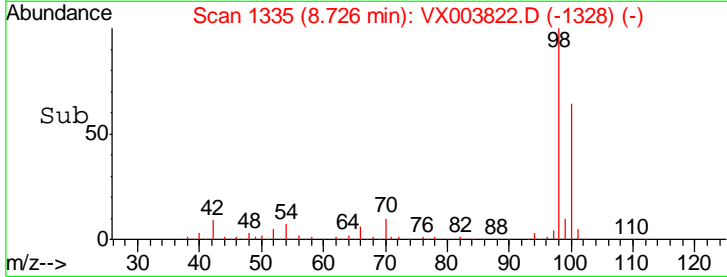
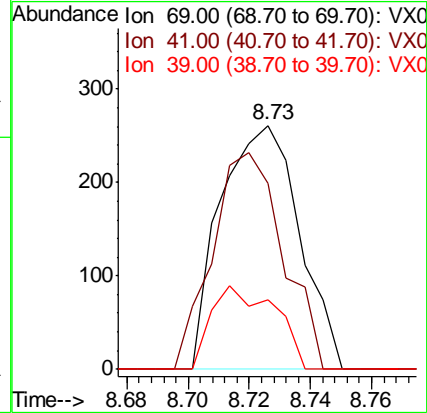
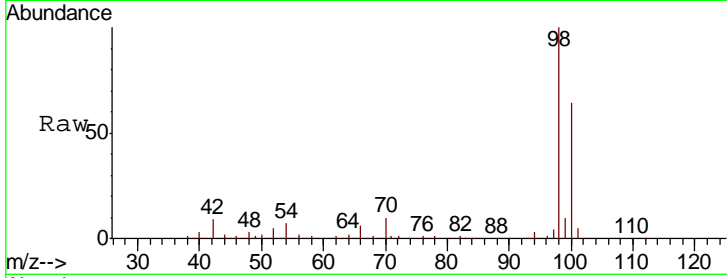




#51
 Ethyl methacrylate
 Concen: 0.22 ug/l
 RT: 8.73 min Scan# 1335
 Delta R.T. -0.46 min
 Lab File: VX003822.D
 Acq: 02 Aug 2018 13:51

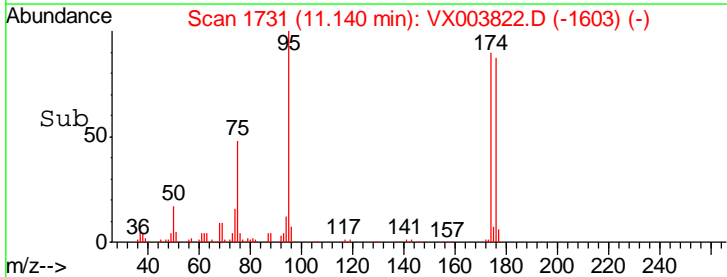
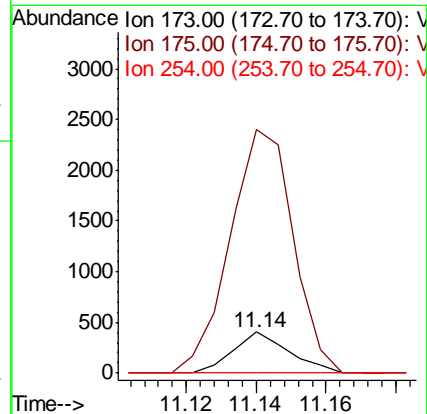
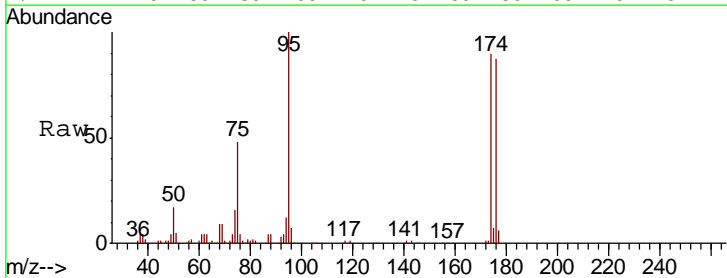
Instrument :
 MSVOA_X
 ClientSampled :
 CAP-1

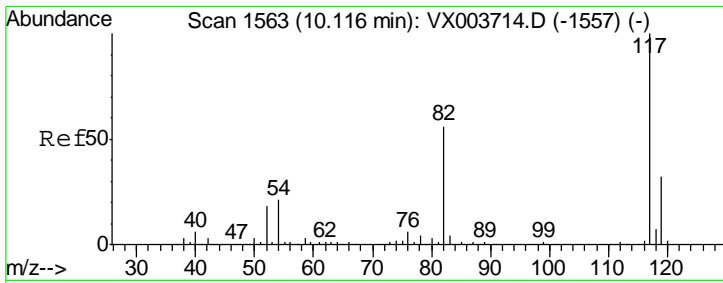
Tgt Ion	Resp	Lower	Upper
69	100		
41	76.2	39.1	117.3
39	28.4	21.7	65.1



#56
 Bromoform
 Concen: 0.42 ug/l
 RT: 11.14 min Scan# 1731
 Delta R.T. 0.28 min
 Lab File: VX003822.D
 Acq: 02 Aug 2018 13:51

Tgt Ion	Resp	Lower	Upper
173	100		
175	667.2	39.0	58.4#
254	0.0	9.6	14.4#

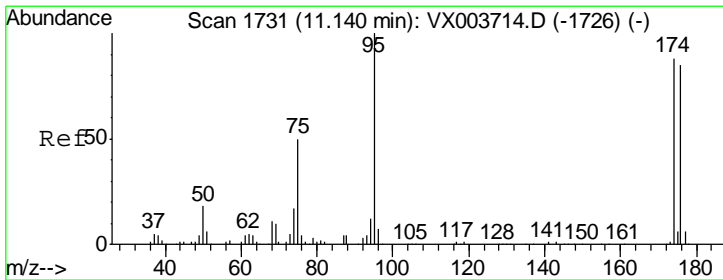
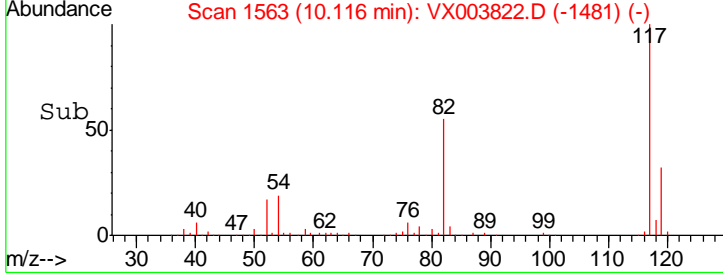
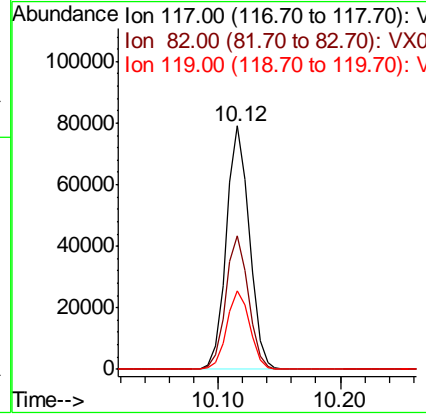
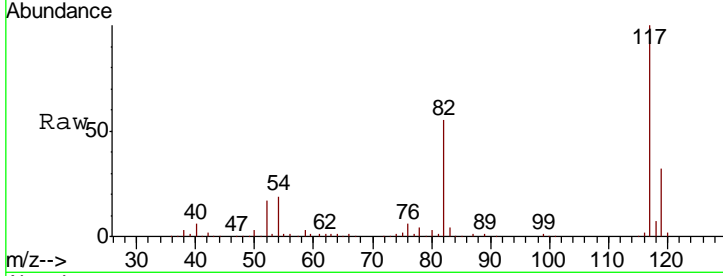




#57
 Chlorobenzene-d5
 Concen: 30.00 ug/l
 RT: 10.12 min Scan# 1563
 Delta R.T. 0.00 min
 Lab File: VX003822.D
 Acq: 02 Aug 2018 13:51

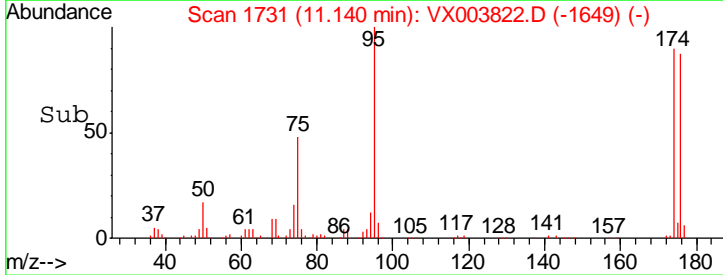
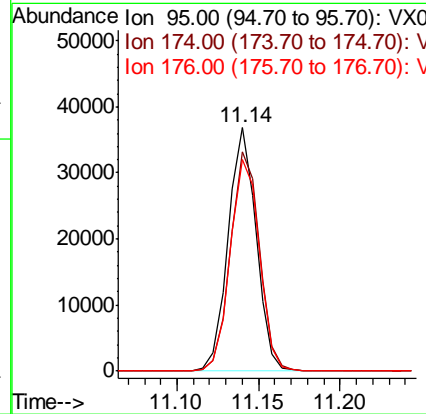
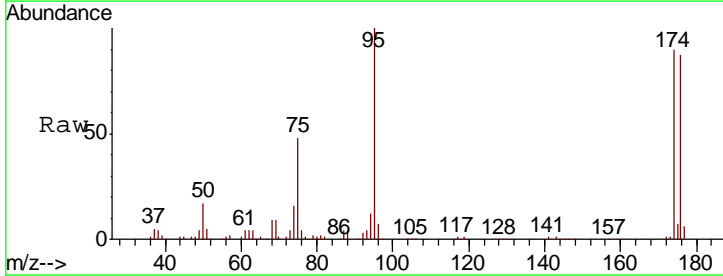
Instrument : MSVOA_X
 ClientSampled : CAP-1

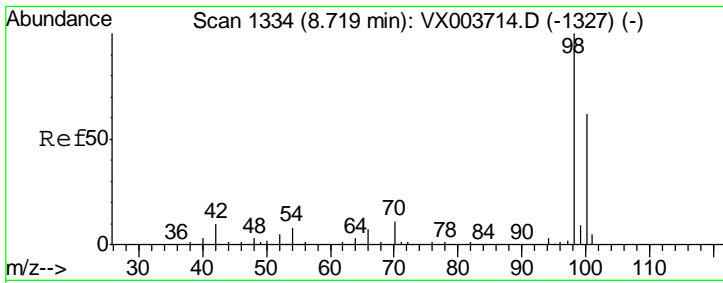
Tgt Ion	Resp	Lower	Upper
117	103110		
82	54.5	44.3	66.5
119	32.4	25.7	38.5



#60
 4-Bromofluorobenzene
 Concen: 26.46 ug/l
 RT: 11.14 min Scan# 1731
 Delta R.T. 0.00 min
 Lab File: VX003822.D
 Acq: 02 Aug 2018 13:51

Tgt Ion	Resp	Lower	Upper
95	43937		
174	93.4	71.8	107.6
176	90.6	70.1	105.1

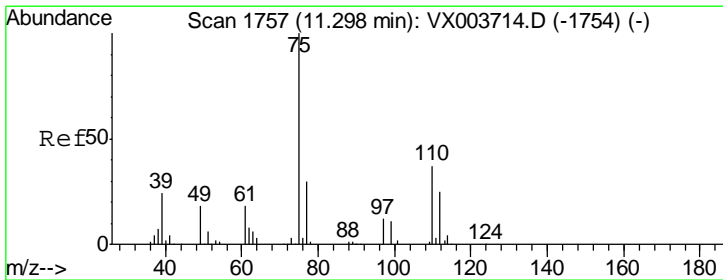
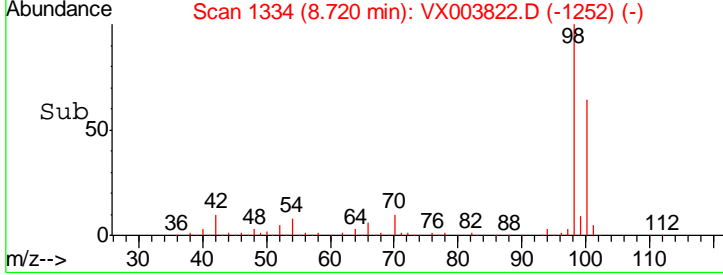
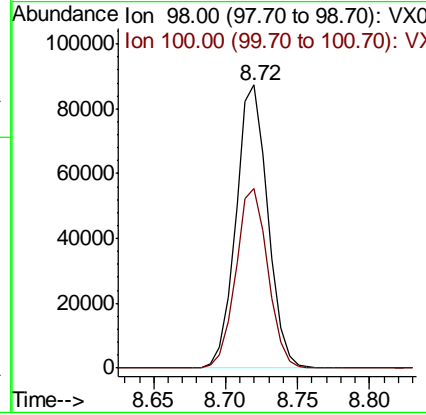
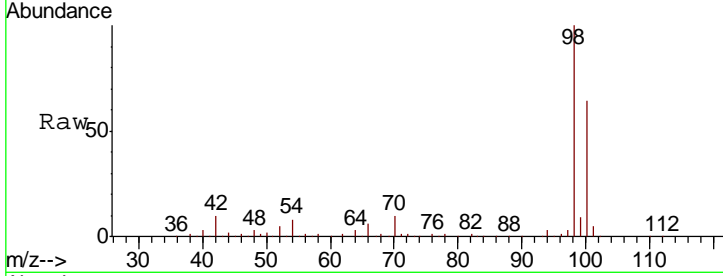




#63
 Toluene-d8
 Concen: 28.96 ug/l
 RT: 8.72 min Scan# 1334
 Delta R.T. 0.00 min
 Lab File: VX003822.D
 Acq: 02 Aug 2018 13:51

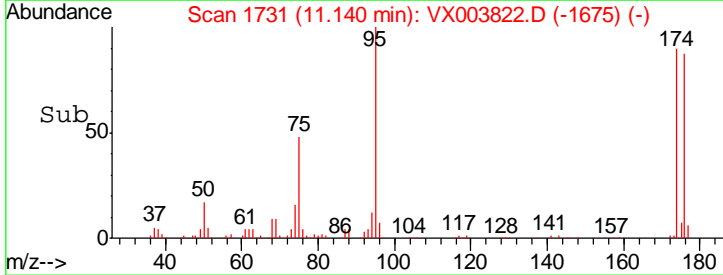
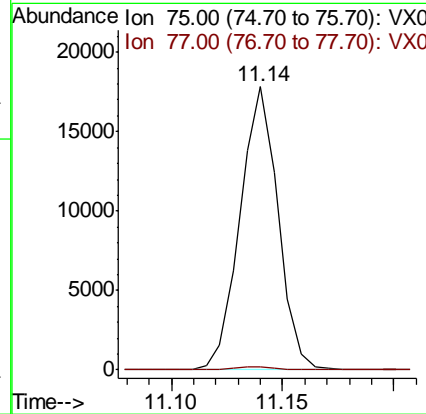
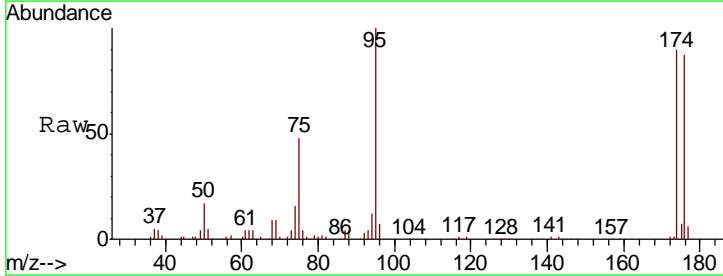
Instrument :
 MSVOA_X
 ClientSampled :
 CAP-1

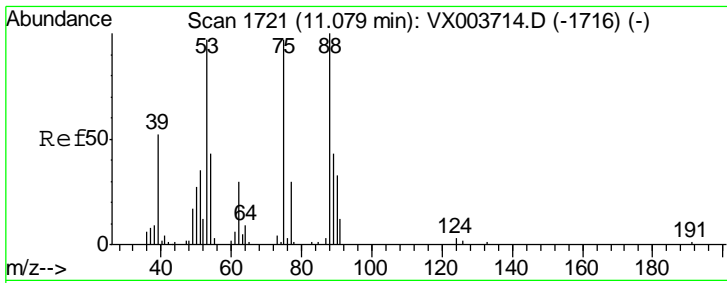
Tgt Ion: 98 Resp: 134510
 Ion Ratio Lower Upper
 98 100
 100 63.8 50.8 76.2



#72
 1,2,3-Trichloropropane
 Concen: 11.92 ug/l
 RT: 11.14 min Scan# 1731
 Delta R.T. -0.16 min
 Lab File: VX003822.D
 Acq: 02 Aug 2018 13:51

Tgt Ion: 75 Resp: 21157
 Ion Ratio Lower Upper
 75 100
 77 1.2 0.0 71.8

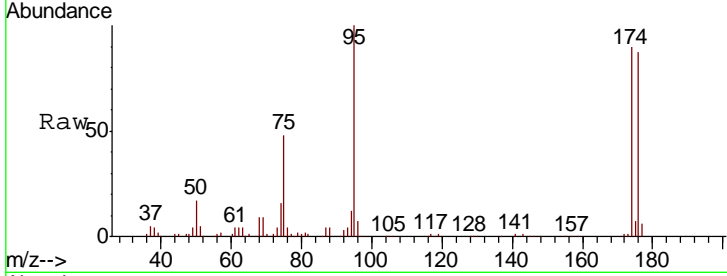




#77
 t-1,4-Dichloro-2-butene
 Concen: 34.99 ug/l
 RT: 11.14 min Scan# 1731
 Delta R.T. 0.06 min
 Lab File: VX003822.D
 Acq: 02 Aug 2018 13:51

Instrument :
 MSVOA_X
 ClientSampled :
 CAP-1

Tot Ion	Ion	Ratio	Lower	Upper
75	75	100		
53	53	0.0	48.3	144.9#
89	89	0.0	21.8	65.4#



Abundance Ion 75.00 (74.70 to 75.70): VX0
 Ion 53.00 (52.70 to 53.70): VX0
 Ion 89.00 (88.70 to 89.70): VX0

