

Data File : VX011297.D
 Acq On : 02 Aug 2019 12:13
 Operator : JC/SP
 Sample : K4043-14
 Misc : 5.10g/10mL/100uL/10mL/MSVOA_X/MEOH
 ALS Vial : 8 Sample Multiplier: 1

Instrument :
 MSVOA_X
ClientSampleId :
 BP-VPB203-GW-298-300

Quant Time: Aug 03 05:40:51 2019
 Quant Method : Z:\VOASRV\HPCHEM1\MSVOA_X\METHOD\82X080119W.M
 Quant Title : SW846 8260
 QLast Update : Fri Aug 02 01:55:00 2019
 Response via : Initial Calibration

Internal Standards	R.T.	QIon	Response	Conc	Units	Dev(Min)
1) Pentafluorobenzene	5.65	168	153300	50.00	ug/l	0.00
34) 1,4-Difluorobenzene	6.85	114	244862	50.00	ug/l	0.00
63) Chlorobenzene-d5	10.11	117	216091	50.00	ug/l	0.00
72) 1,4-Dichlorobenzene-d4	12.08	152	102271	50.00	ug/l	0.00

System Monitoring Compounds

33) 1,2-Dichloroethane-d4	6.06	65	80089	51.88	ug/l	0.00
Spiked Amount	50.000		Recovery	= 103.76%		
35) Dibromofluoromethane	5.49	113	71773	44.90	ug/l	0.00
Spiked Amount	50.000		Recovery	= 89.80%		
50) Toluene-d8	8.71	98	292610	48.49	ug/l	0.00
Spiked Amount	50.000		Recovery	= 96.98%		
62) 4-Bromofluorobenzene	11.13	95	91945	42.68	ug/l	0.00
Spiked Amount	50.000		Recovery	= 85.36%		

Target Compounds

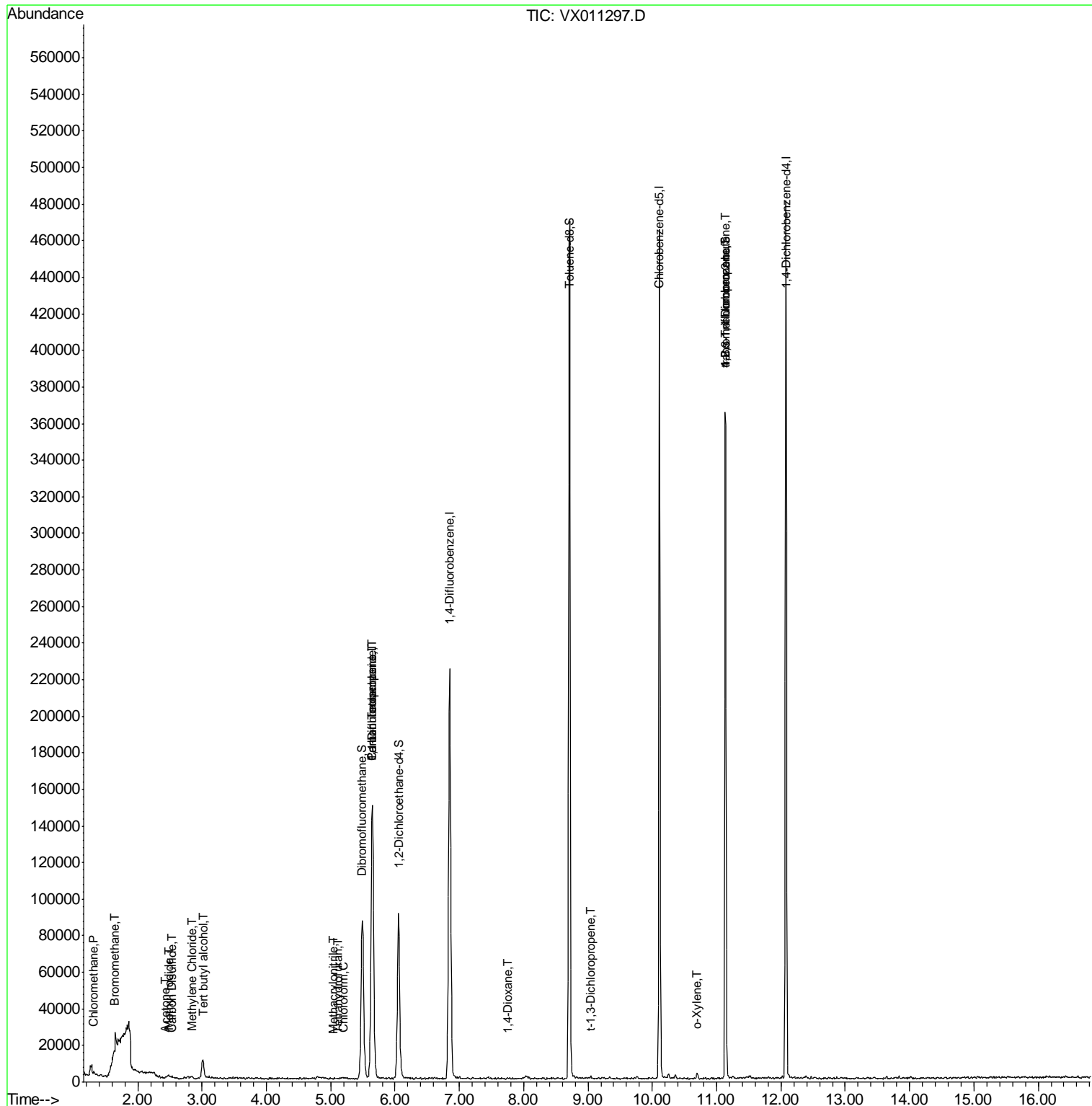
	R.T.	QIon	Response	Conc	Units	Qvalue
3) Chloromethane	1.31	50	612	0.460	ug/l #	87
5) Bromomethane	1.63	94	876	0.840	ug/l	100
6) Chloroethane	1.71	64	61	Below Cal	#	1
10) Methyl Iodide	2.48	142	1015	0.572	ug/l #	96
11) Tert butyl alcohol	3.01	59	5859	19.053	ug/l #	77
13) Acrolein	2.28	56	80	Below Cal	#	1
16) Acetone	2.43	43	222	0.302	ug/l #	62
17) Carbon Disulfide	2.53	76	787	0.240	ug/l #	93
20) Methylene Chloride	2.84	84	419	0.260	ug/l #	84
29) Tetrahydrofuran	5.12	42	202	0.315	ug/l #	36
30) Chloroform	5.20	83	578	0.221	ug/l #	76
36) 1,1-Dichloropropene	5.65	75	9879	4.621	ug/l #	49
38) Carbon Tetrachloride	5.64	117	13894	6.460	ug/l #	16
41) Methacrylonitrile	5.04	41	238	0.203	ug/l #	20
49) 1,4-Dioxane	7.76	88	41	0.877	ug/l #	71
53) t-1,3-Dichloropropene	9.04	75	128	2.889	ug/l #	43
69) o-Xylene	10.69	106	689	0.234	ug/l	92
76) 1,2,3-Trichloropropane	11.13	75	44503	23.895	ug/l #	36
81) trans-1,4-Dichloro-2-buten	11.13	75	44503	62.555	ug/l #	10

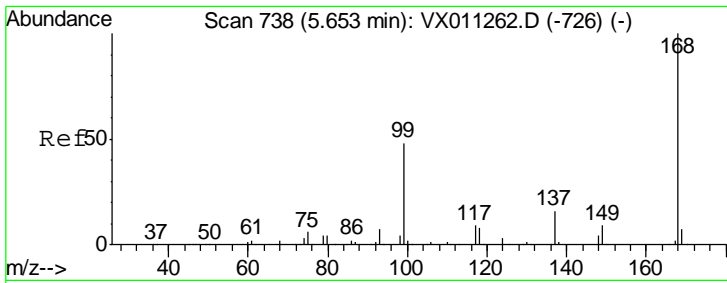
(#) = qualifier out of range (m) = manual integration (+) = signals summed

Data File : VX011297.D
Acq On : 02 Aug 2019 12:13
Operator : JC/SP
Sample : K4043-14
Misc : 5.10g/10mL/100uL/10mL/MSVOA_X/MEOH
ALS Vial : 8 Sample Multiplier: 1

Instrument :
MSVOA_X
Client Sampled :
BP-VPB203-GW-298-300

Quant Time: Aug 03 05:40:51 2019
Quant Method : Z:\VOASRV\HPCHEM1\MSVOA_X\METHOD\82X080119W.M
Quant Title : SW846 8260
QLast Update : Fri Aug 02 01:55:00 2019
Response via : Initial Calibration

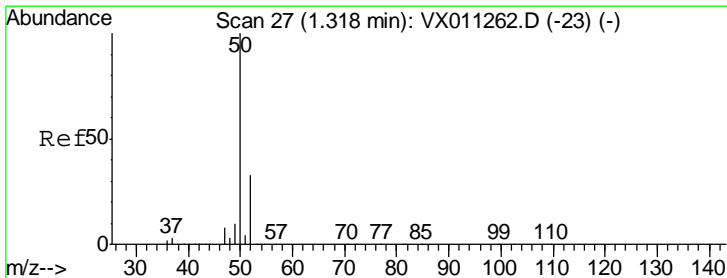
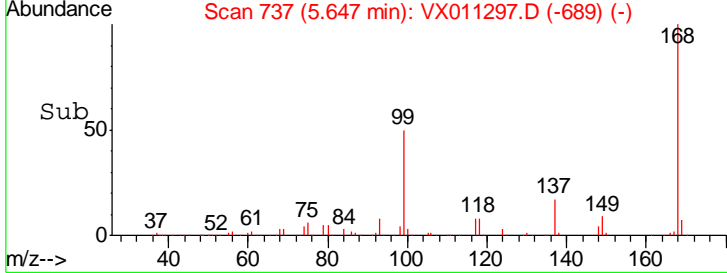
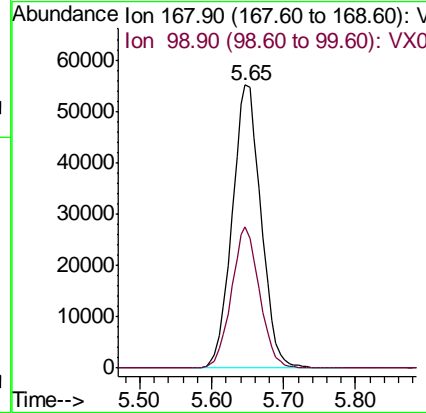
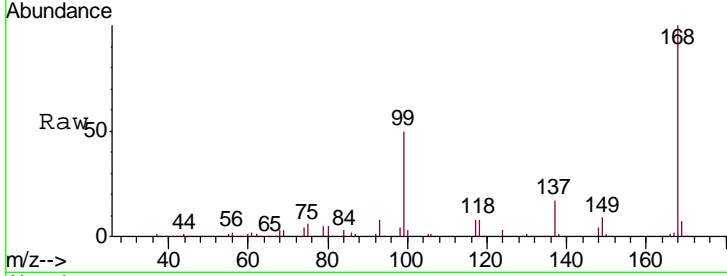




#1
 Pentafluorobenzene
 Concen: 50.000 ug/l
 RT: 5.65 min Scan# 737
 Delta R.T. -0.01 min
 Lab File: VX011297.D
 Acq: 02 Aug 2019 12:13

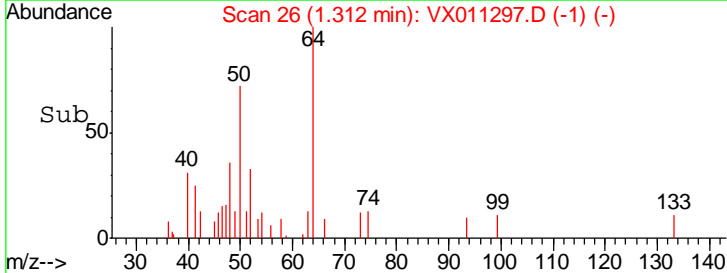
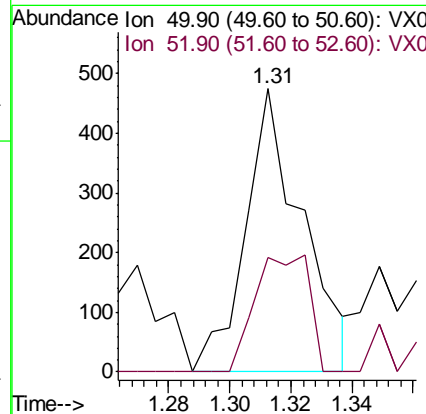
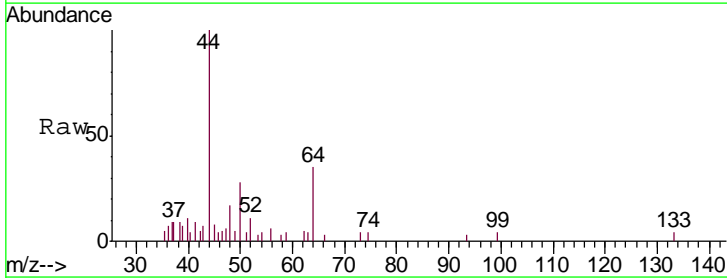
Instrument :
 MSVOA_X
 ClientSampleId :
 BP-VPB203-GW-298-300

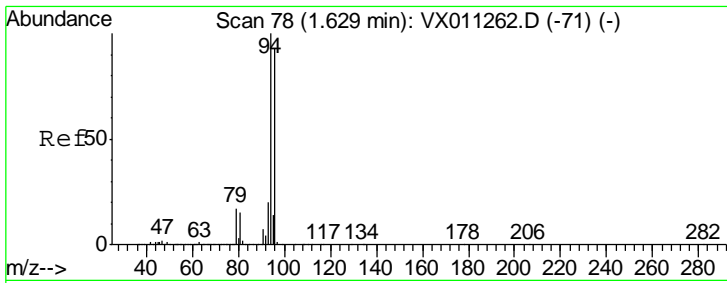
Tgt Ion: 168 Resp: 153300
 Ion Ratio Lower Upper
 168 100
 99 49.8 38.5 57.7



#3
 Chloromethane
 Concen: 0.460 ug/l
 RT: 1.31 min Scan# 26
 Delta R.T. -0.01 min
 Lab File: VX011297.D
 Acq: 02 Aug 2019 12:13

Tgt Ion: 50 Resp: 612
 Ion Ratio Lower Upper
 50 100
 52 40.3 26.4 39.6#

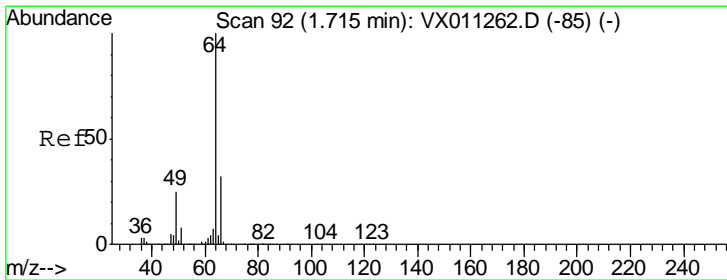
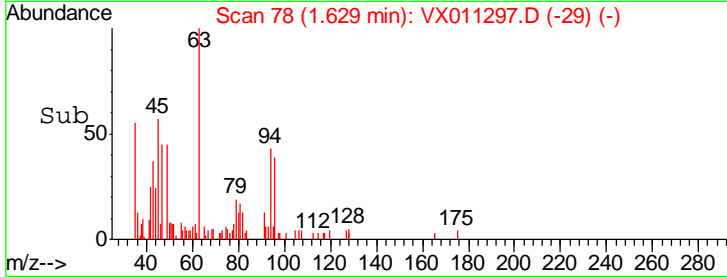
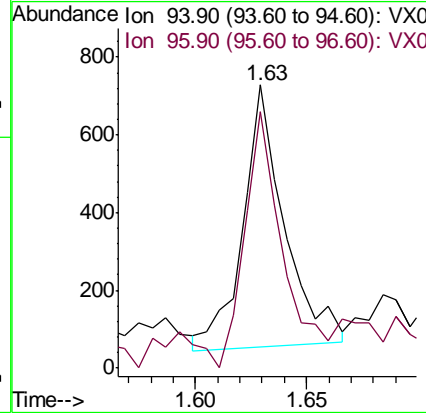
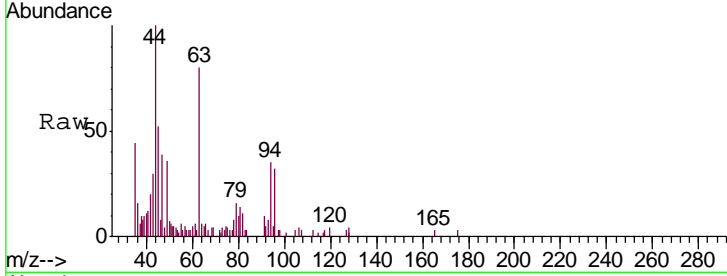




#5
 Bromomethane
 Concen: 0.840 ug/l
 RT: 1.63 min Scan# 78
 Delta R.T. 0.00 min
 Lab File: VX011297.D
 Acq: 02 Aug 2019 12:13

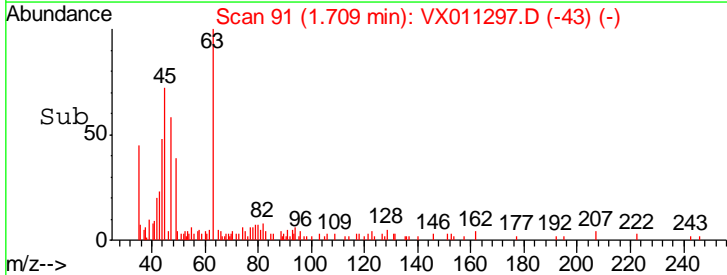
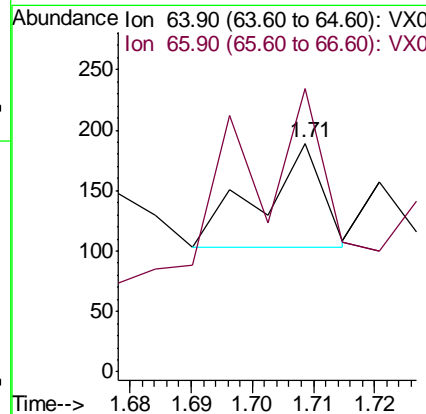
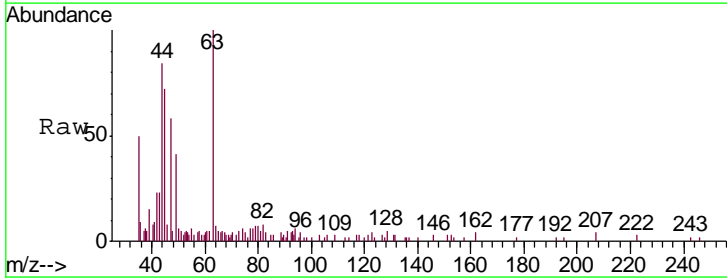
Instrument :
 MSVOA_X
 ClientSampled :
 BP-VPB203-GW-298-300

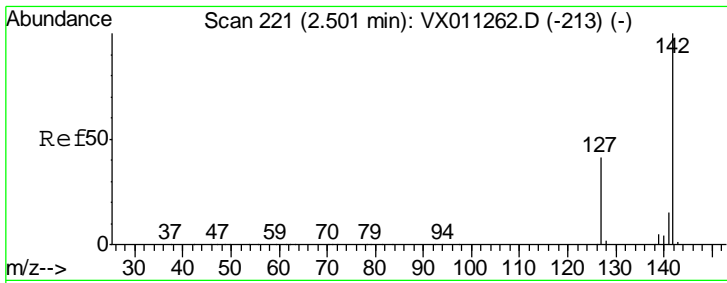
Tgt Ion: 94 Resp: 876
 Ion Ratio Lower Upper
 94 100
 96 93.0 74.6 112.0



#6
 Chloroethane
 Concen: Below Cal
 RT: 1.71 min Scan# 91
 Delta R.T. -0.01 min
 Lab File: VX011297.D
 Acq: 02 Aug 2019 12:13

Tgt Ion: 64 Resp: 61
 Ion Ratio Lower Upper
 64 100
 66 169.8 25.1 37.7#

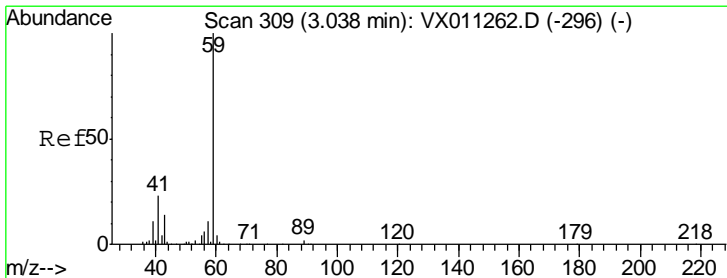
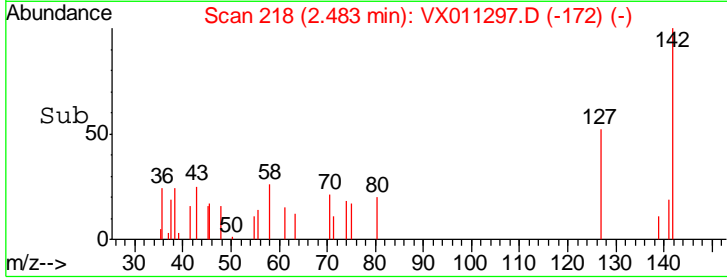
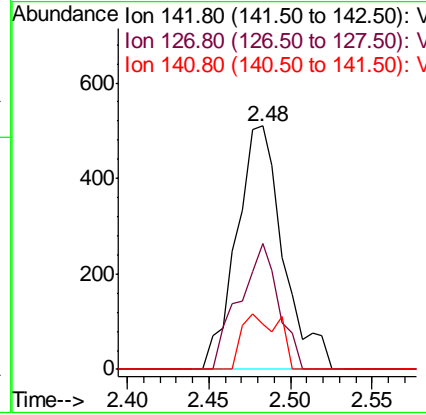
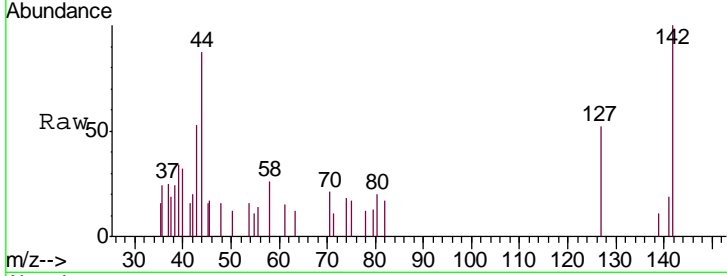




#10
 Methyl Iodide
 Concen: 0.572 ug/l
 RT: 2.48 min Scan# 218
 Delta R.T. -0.02 min
 Lab File: VX011297.D
 Acq: 02 Aug 2019 12:13

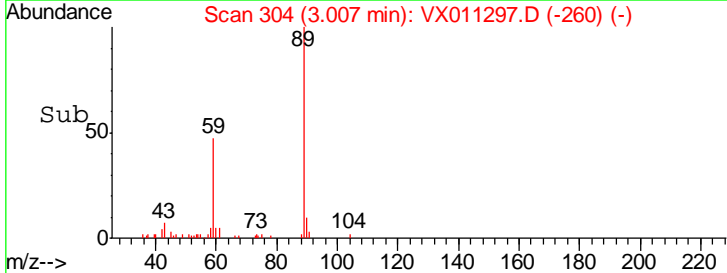
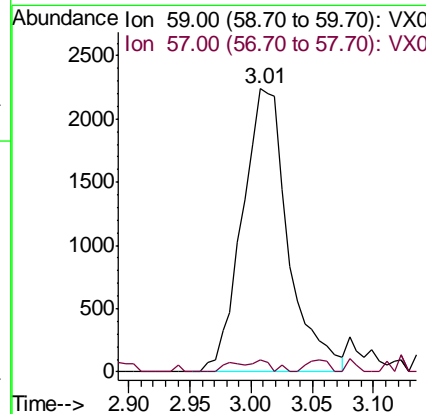
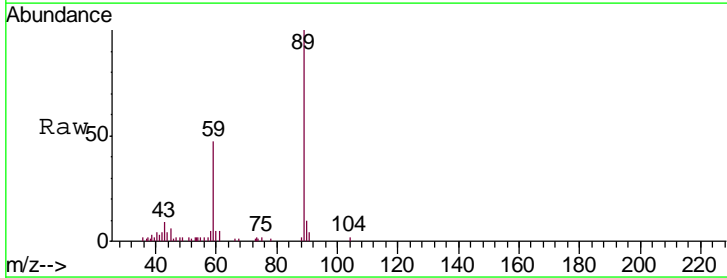
Instrument :
 MSVOA_X
 ClientSampled :
 BP-VPB203-GW-298-300

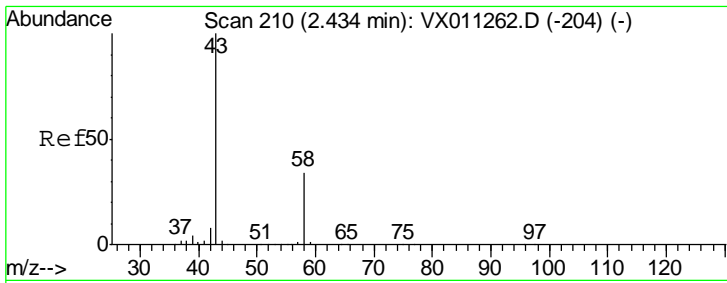
Tgt Ion	Resp	Lower	Upper
142	1015		
127	43.9	33.8	50.8
141	17.7	11.4	17.2#



#11
 Tert butyl alcohol
 Concen: 19.053 ug/l
 RT: 3.01 min Scan# 304
 Delta R.T. -0.03 min
 Lab File: VX011297.D
 Acq: 02 Aug 2019 12:13

Tgt Ion	Resp	Lower	Upper
59	5859		
57	1.8	8.3	12.5#

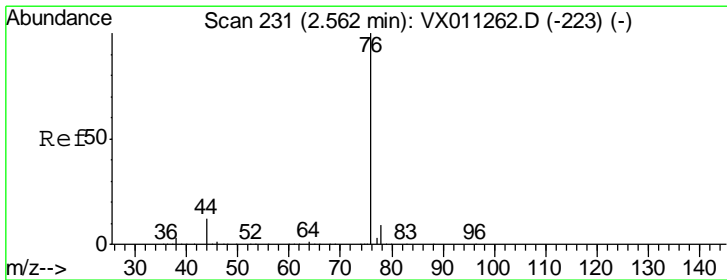
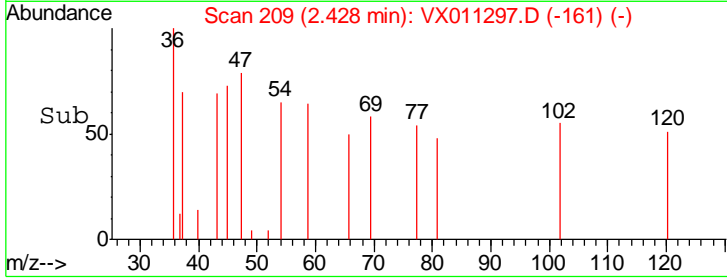
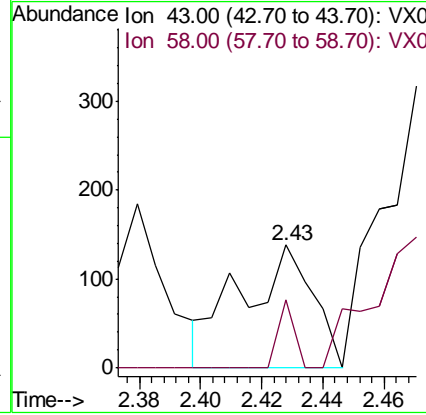
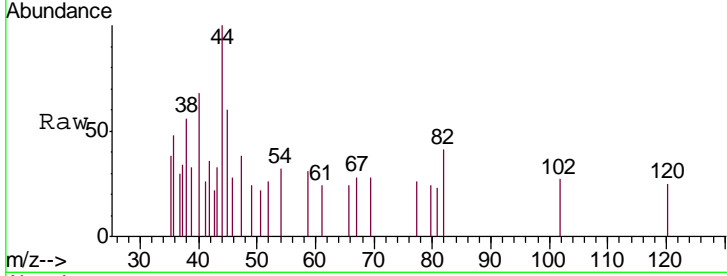




#16
 Acetone
 Concen: 0.302 ug/l
 RT: 2.43 min Scan# 209
 Delta R.T. -0.01 min
 Lab File: VX011297.D
 Acq: 02 Aug 2019 12:13

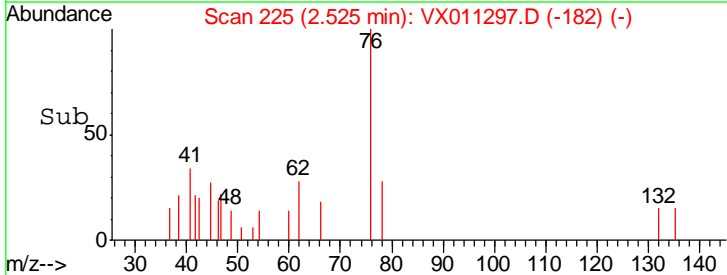
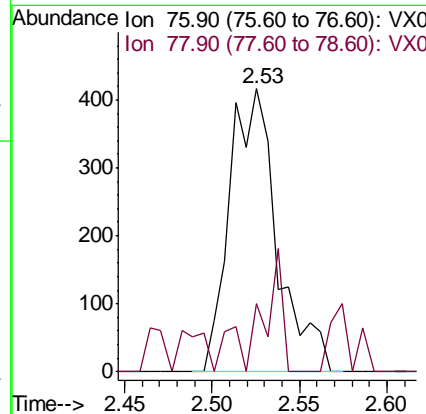
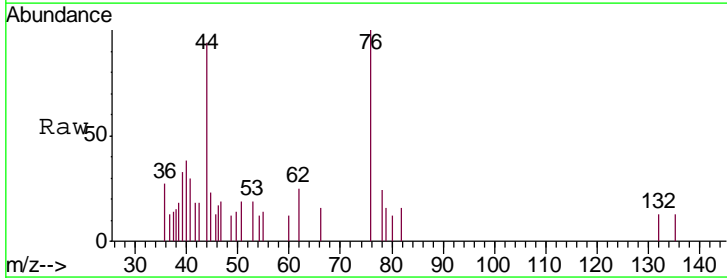
Instrument : MSVOA_X
 ClientSampled : BP-VPB203-GW-298-300

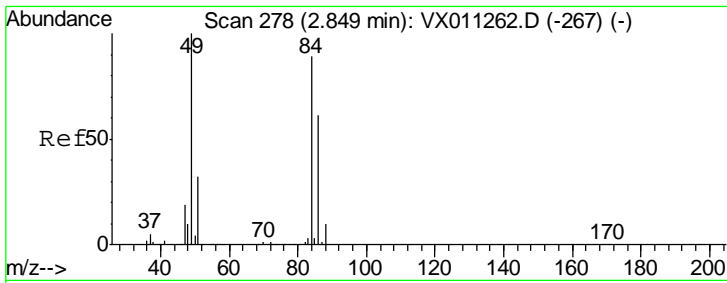
Tgt Ion: 43 Resp: 222
 Ion Ratio Lower Upper
 43 100
 58 55.8 27.4 41.0#



#17
 Carbon Disulfide
 Concen: 0.240 ug/l
 RT: 2.53 min Scan# 225
 Delta R.T. -0.04 min
 Lab File: VX011297.D
 Acq: 02 Aug 2019 12:13

Tgt Ion: 76 Resp: 787
 Ion Ratio Lower Upper
 76 100
 78 11.8 7.4 11.0#

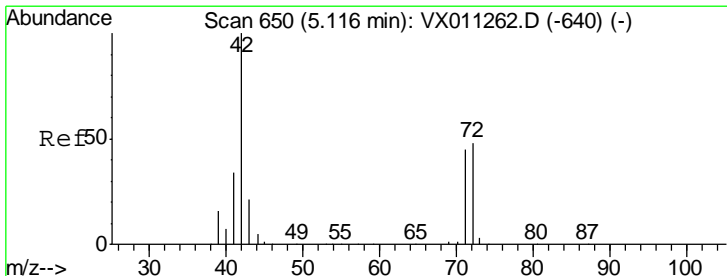
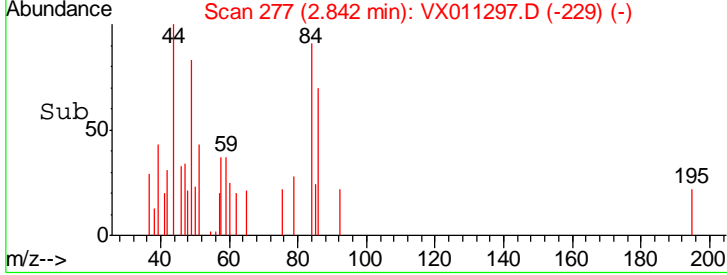
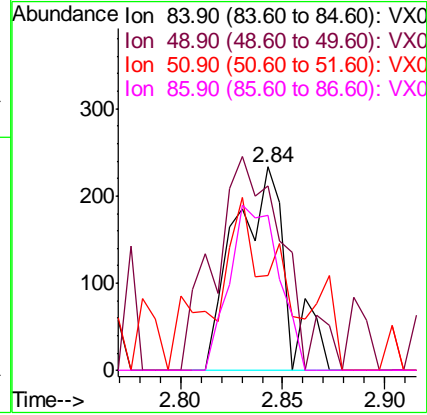
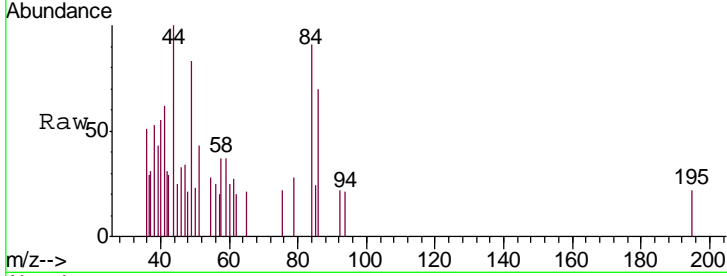




#20
 Methylene Chloride
 Concen: 0.260 ug/l
 RT: 2.84 min Scan# 277
 Delta R.T. -0.01 min
 Lab File: VX011297.D
 Acq: 02 Aug 2019 12:13

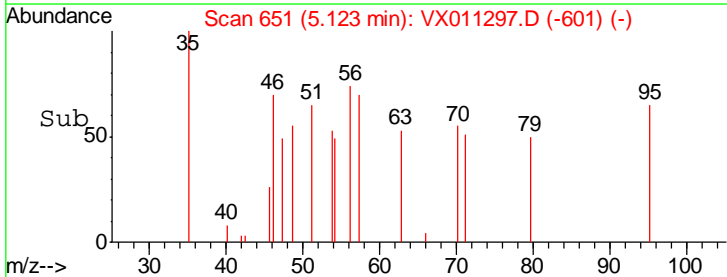
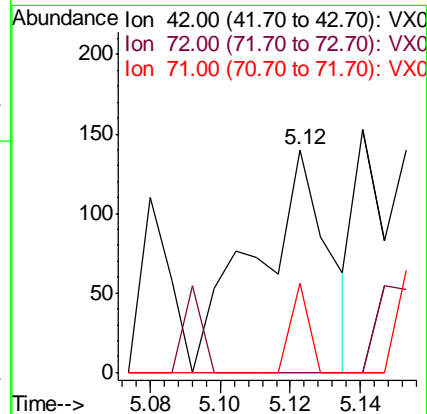
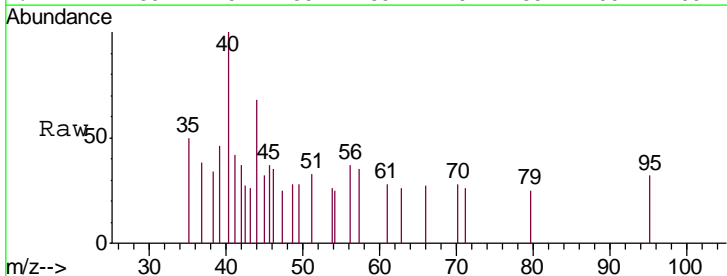
Instrument :
 MSVOA_X
ClientSampled :
 BP-VPB203-GW-298-300

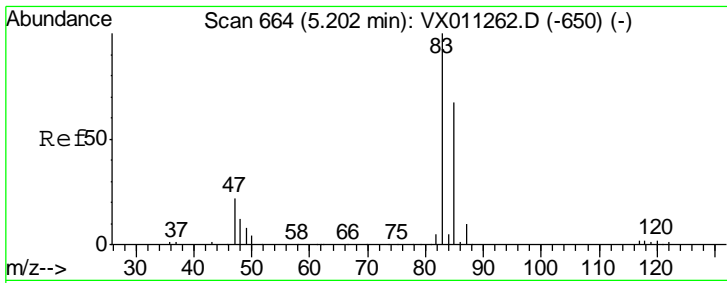
Tgt Ion	Resp	Lower	Upper
84	100		
49	91.0	89.3	133.9
51	46.8	28.3	42.5#
86	76.4	54.5	81.7



#29
 Tetrahydrofuran
 Concen: 0.315 ug/l
 RT: 5.12 min Scan# 651
 Delta R.T. 0.01 min
 Lab File: VX011297.D
 Acq: 02 Aug 2019 12:13

Tgt Ion	Resp	Lower	Upper
42	100		
72	0.0	39.9	59.9#
71	9.9	36.9	55.3#

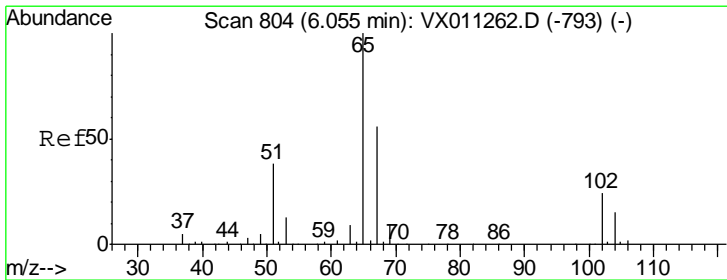
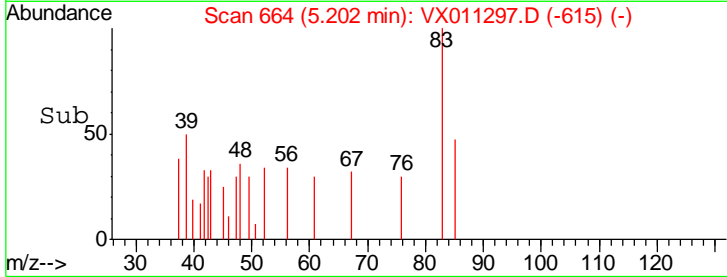
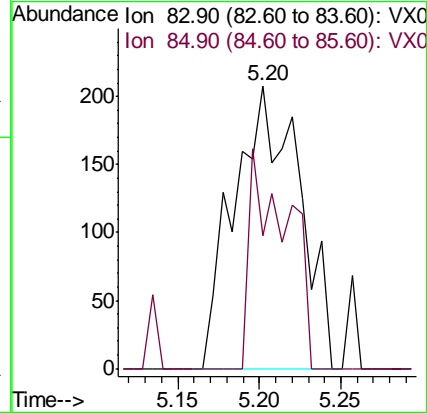
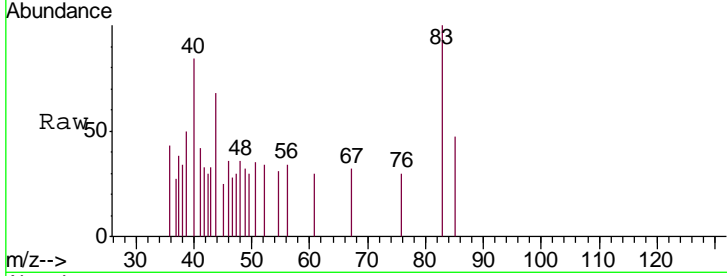




#30
 Chloroform
 Concen: 0.221 ug/l
 RT: 5.20 min Scan# 664
 Delta R.T. 0.00 min
 Lab File: VX011297.D
 Acq: 02 Aug 2019 12:13

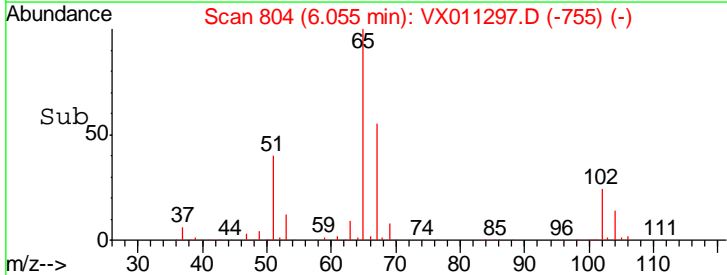
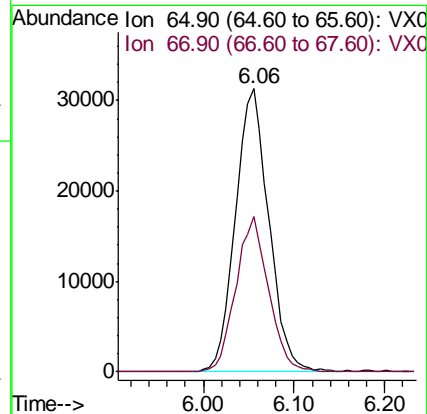
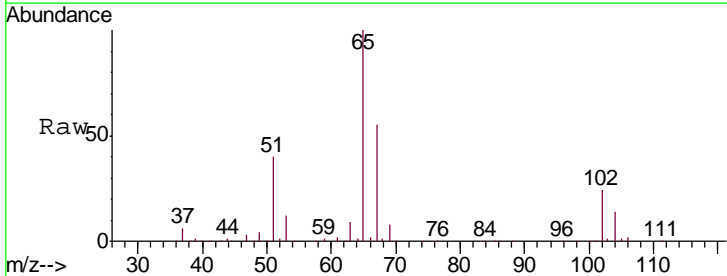
Instrument :
 MSVOA_X
 ClientSampleId :
 BP-VPB203-GW-298-300

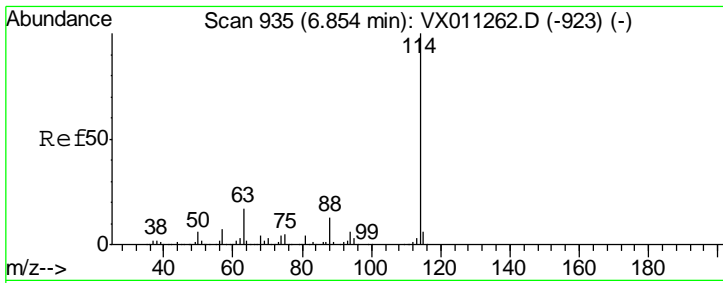
Tgt Ion: 83 Resp: 578
 Ion Ratio Lower Upper
 83 100
 85 47.1 53.4 80.0#



#33
 1,2-Dichloroethane-d4
 Concen: 51.877 ug/l
 RT: 6.06 min Scan# 804
 Delta R.T. 0.00 min
 Lab File: VX011297.D
 Acq: 02 Aug 2019 12:13

Tgt Ion: 65 Resp: 80089
 Ion Ratio Lower Upper
 65 100
 67 53.7 0.0 110.6

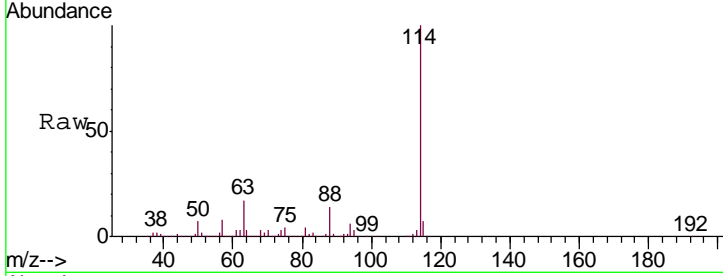




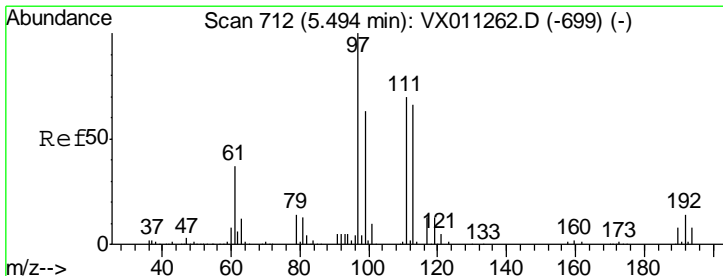
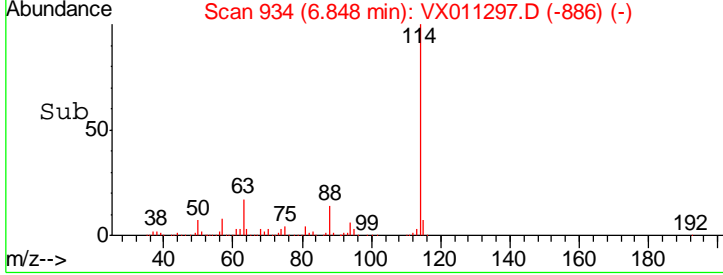
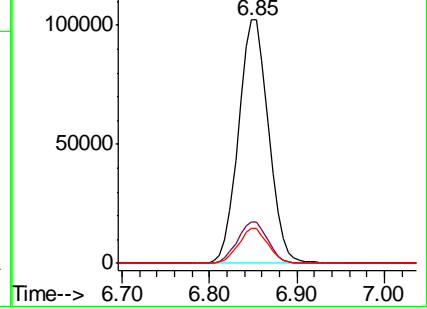
#34
 1,4-Difluorobenzene
 Concen: 50.000 ug/l
 RT: 6.85 min Scan# 934
 Delta R.T. -0.01 min
 Lab File: VX011297.D
 Acq: 02 Aug 2019 12:13

Instrument :
 MSVOA_X
 ClientSampled :
 BP-VPB203-GW-298-300

Tgt Ion	Resp	Lower	Upper
114	100		
63	16.9	0.0	34.0
88	14.5	0.0	26.4

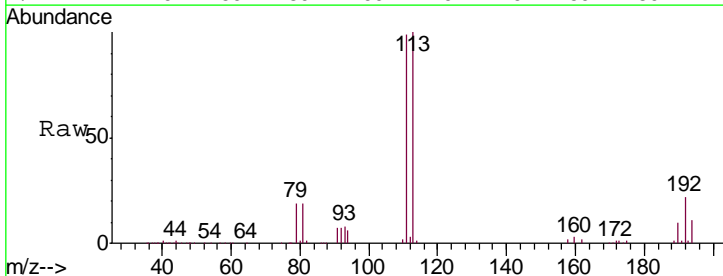


Abundance Ion 113.90 (113.60 to 114.60): V
 Ion 63.00 (62.70 to 63.70): VX0
 Ion 87.90 (87.60 to 88.60): VX0

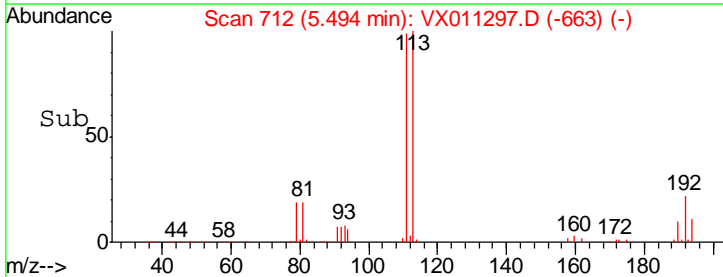
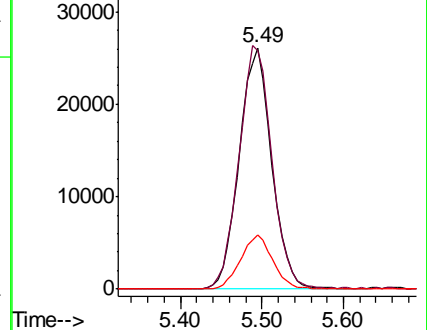


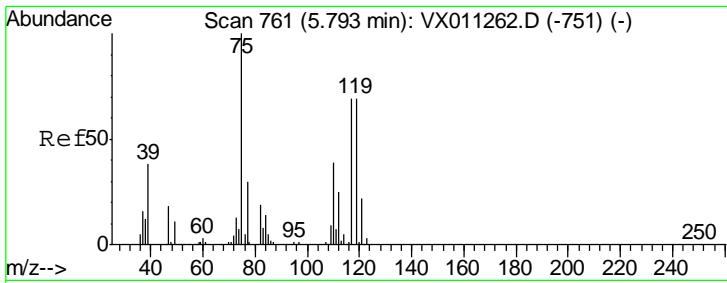
#35
 Dibromofluoromethane
 Concen: 44.896 ug/l
 RT: 5.49 min Scan# 712
 Delta R.T. 0.00 min
 Lab File: VX011297.D
 Acq: 02 Aug 2019 12:13

Tgt Ion	Resp	Lower	Upper
113	100		
111	102.5	81.9	122.9
192	22.2	17.8	26.8



Abundance Ion 112.80 (112.50 to 113.50): V
 Ion 110.80 (110.50 to 111.50): V
 Ion 191.70 (191.40 to 192.40): V

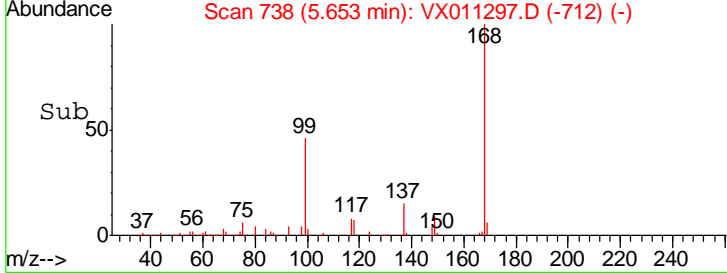
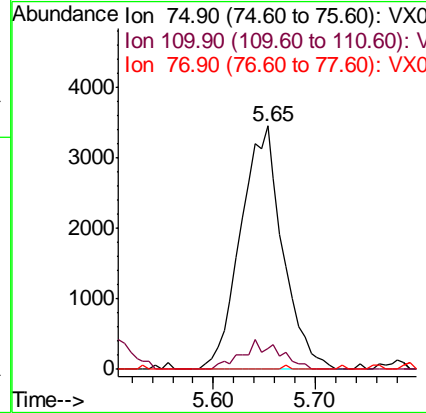
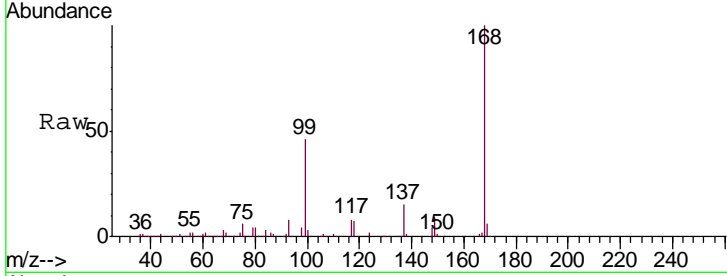




#36
 1,1-Dichloropropene
 Concen: 4.621 ug/l
 RT: 5.65 min Scan# 738
 Delta R.T. -0.14 min
 Lab File: VX011297.D
 Acq: 02 Aug 2019 12:13

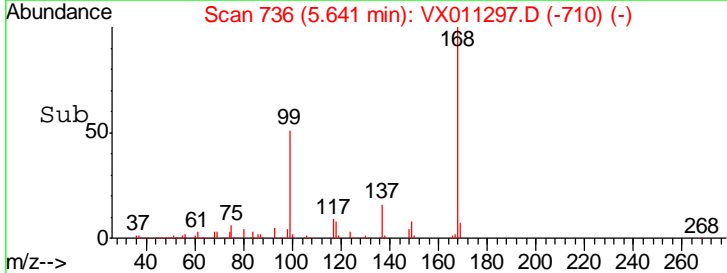
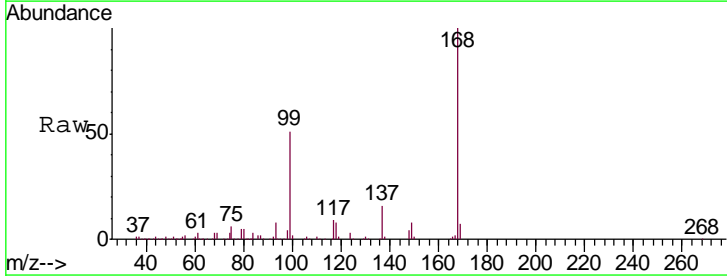
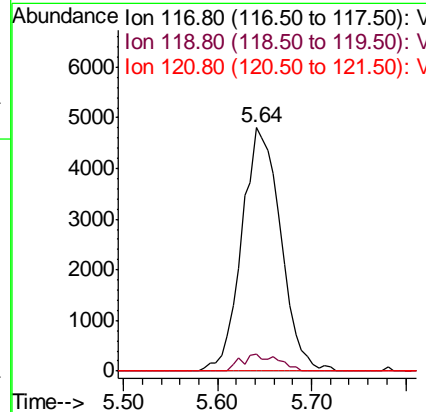
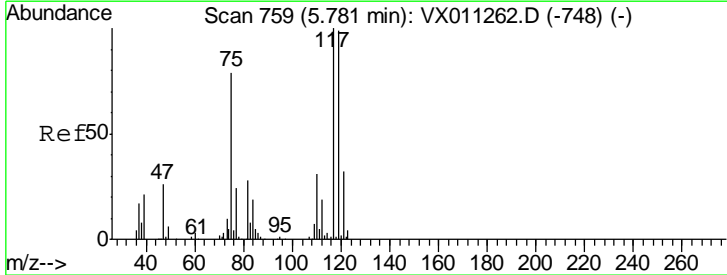
Instrument :
 MSVOA_X
ClientSampled :
 BP-VPB203-GW-298-300

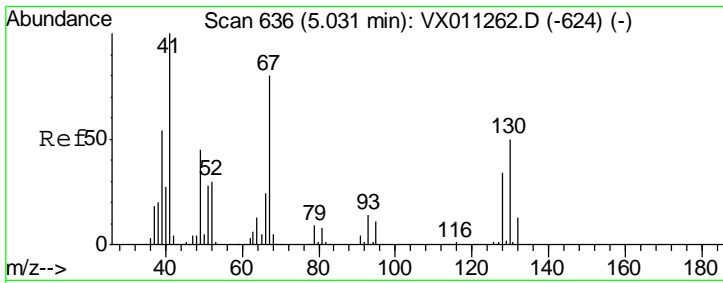
Tgt Ion	Resp	Lower	Upper
75	100		
110	10.8	20.0	59.9#
77	0.0	24.8	37.2#



#38
 Carbon Tetrachloride
 Concen: 6.460 ug/l
 RT: 5.64 min Scan# 736
 Delta R.T. -0.14 min
 Lab File: VX011297.D
 Acq: 02 Aug 2019 12:13

Tgt Ion	Resp	Lower	Upper
117	100		
119	6.8	79.0	118.4#
121	0.0	25.9	38.9#

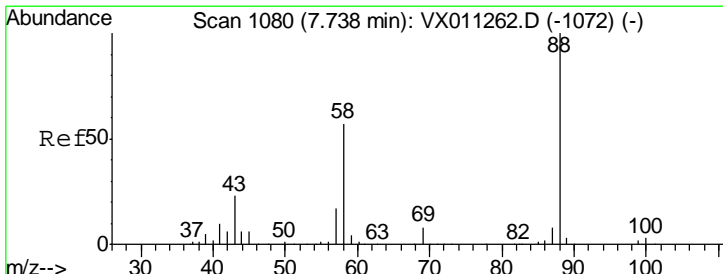
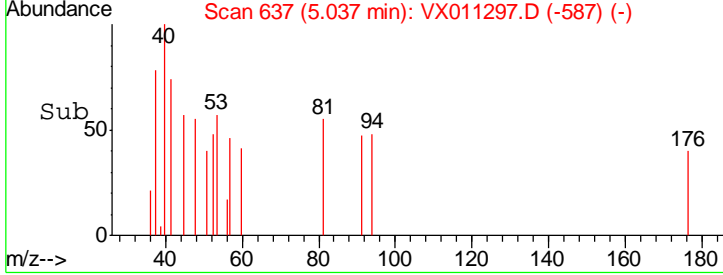
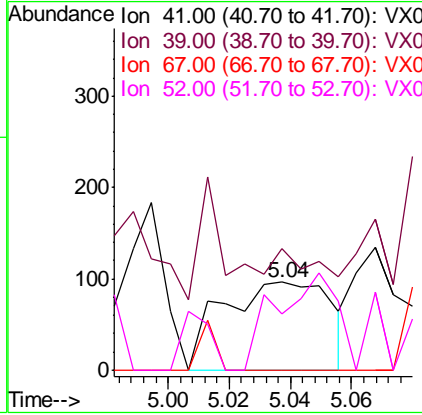
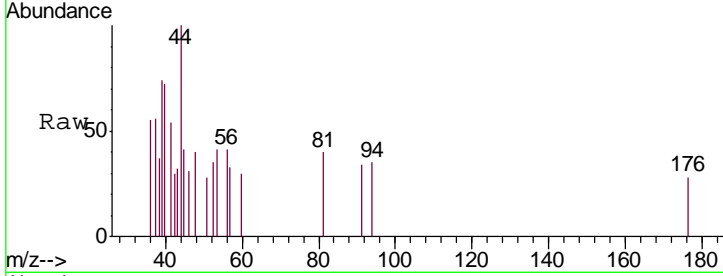




#41
 Methacrylonitrile
 Concen: 0.203 ug/l
 RT: 5.04 min Scan# 637
 Delta R.T. 0.01 min
 Lab File: VX011297.D
 Acq: 02 Aug 2019 12:13

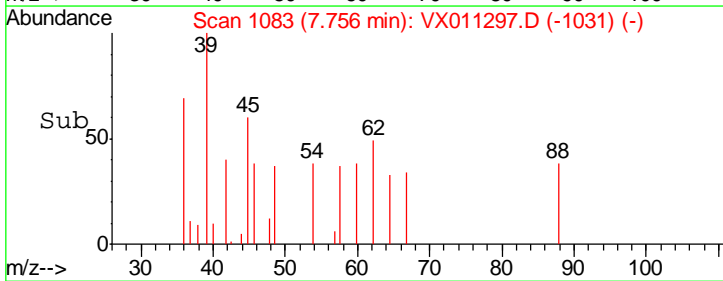
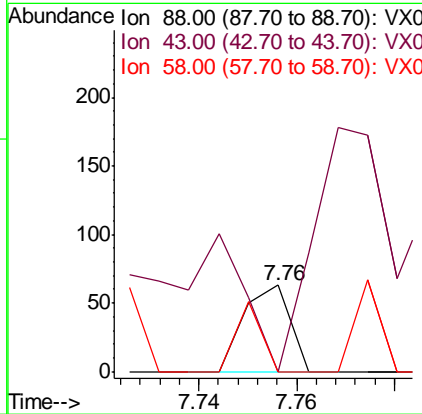
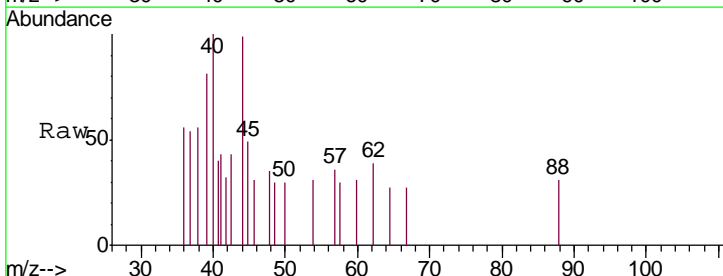
Instrument :
 MSVOA_X
ClientSampled :
 BP-VPB203-GW-298-300

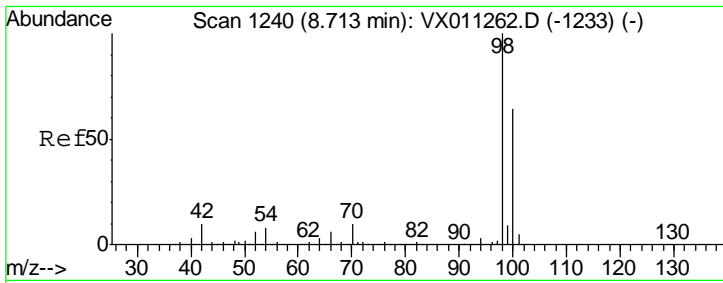
Tgt Ion	Resp	Lower	Upper
41	100		
39	0.0	43.0	64.6#
67	0.0	65.1	97.7#
52	61.8	24.8	37.2#



#49
 1,4-Dioxane
 Concen: 0.877 ug/l
 RT: 7.76 min Scan# 1083
 Delta R.T. 0.02 min
 Lab File: VX011297.D
 Acq: 02 Aug 2019 12:13

Tgt Ion	Resp	Lower	Upper
88	100		
43	0.0	22.2	33.2#
58	46.3	47.8	71.8#

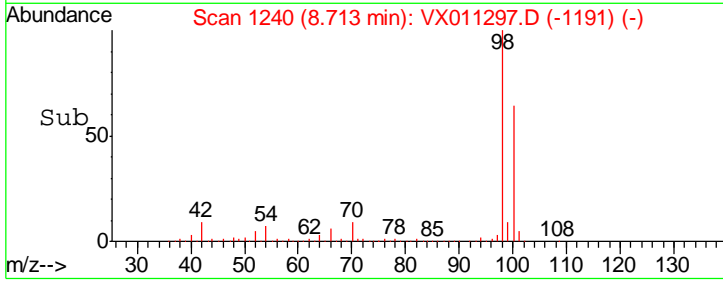
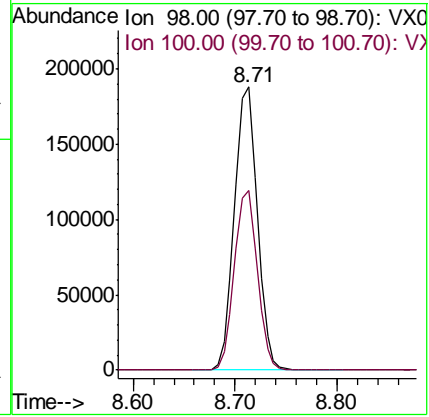
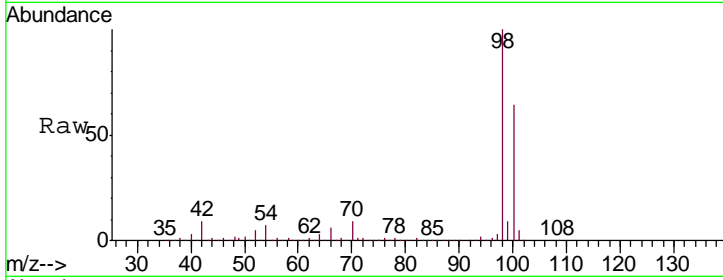




#50
 Toluene-d8
 Concen: 48.490 ug/l
 RT: 8.71 min Scan# 1240
 Delta R.T. 0.00 min
 Lab File: VX011297.D
 Acq: 02 Aug 2019 12:13

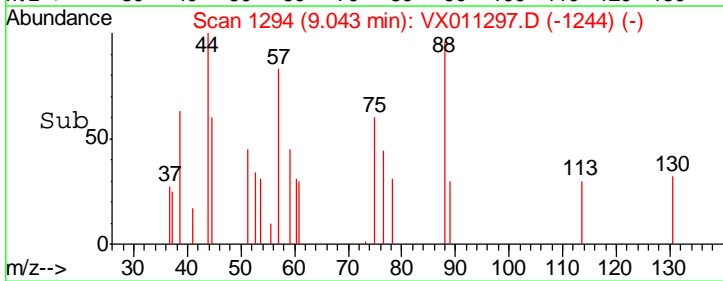
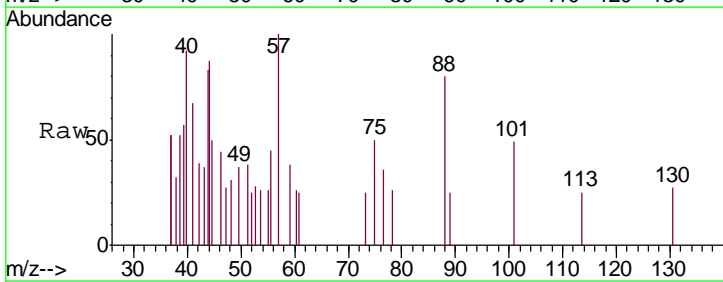
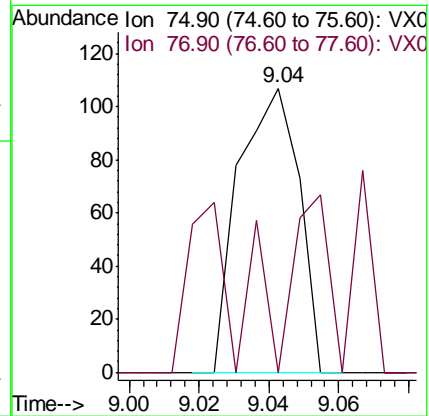
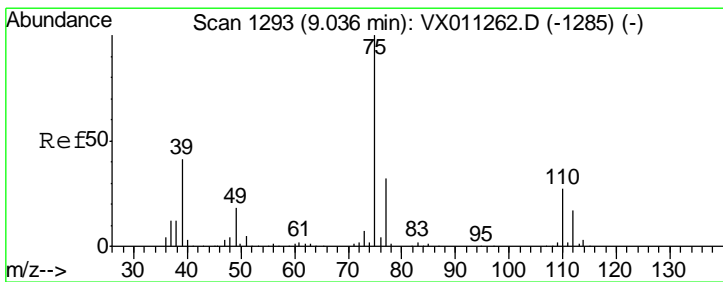
Instrument :
 MSVOA_X
ClientSampled :
 BP-VPB203-GW-298-300

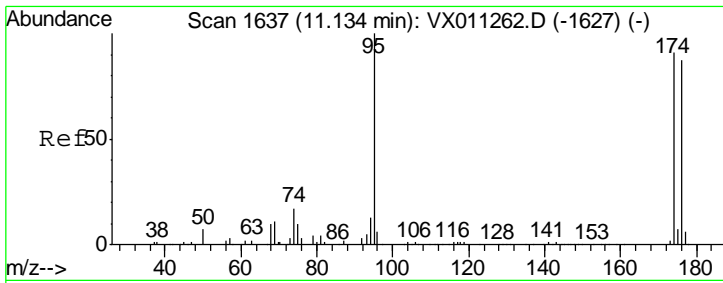
Tgt Ion: 98 Resp: 292610
 Ion Ratio Lower Upper
 98 100
 100 63.6 51.7 77.5



#53
 t-1,3-Dichloropropene
 Concen: 2.889 ug/l
 RT: 9.04 min Scan# 1294
 Delta R.T. 0.01 min
 Lab File: VX011297.D
 Acq: 02 Aug 2019 12:13

Tgt Ion: 75 Resp: 128
 Ion Ratio Lower Upper
 75 100
 77 0.0 25.4 38.0#

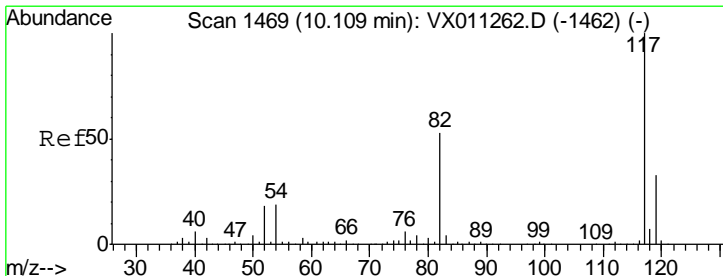
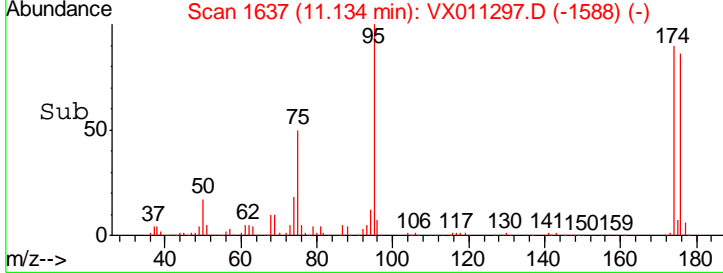
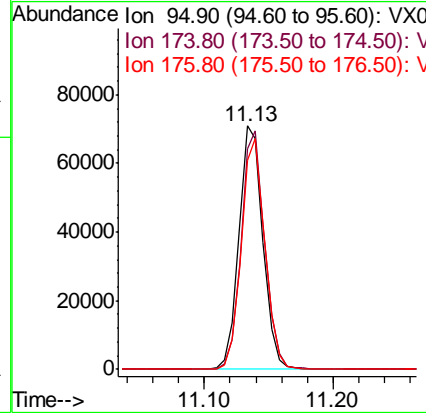
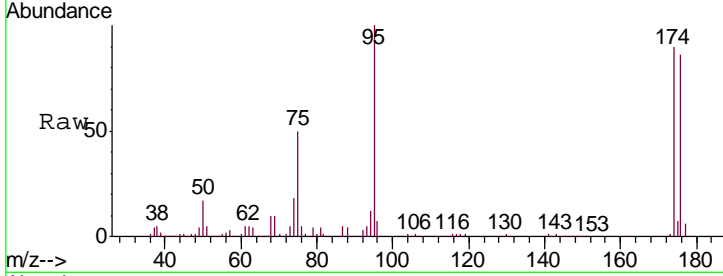




#62
 4-Bromofluorobenzene
 Concen: 42.677 ug/l
 RT: 11.13 min Scan# 1637
 Delta R.T. 0.00 min
 Lab File: VX011297.D
 Acq: 02 Aug 2019 12:13

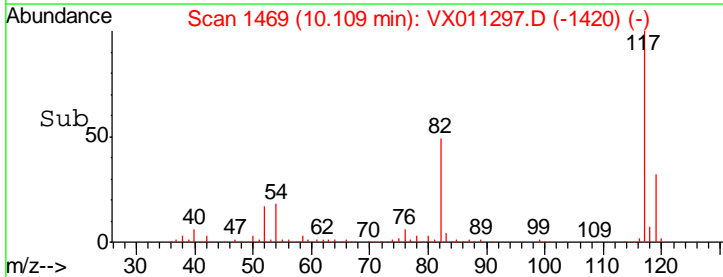
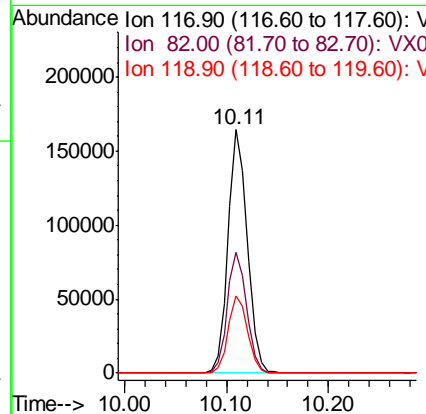
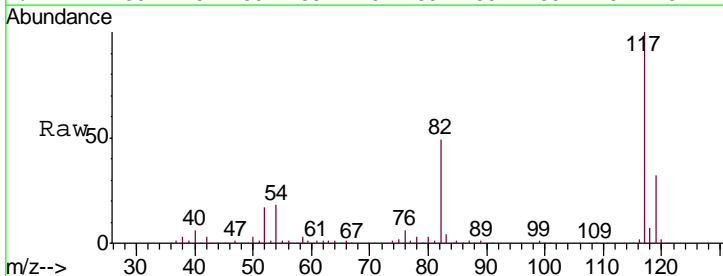
Instrument : MSVOA_X
 ClientSampleId : BP-VPB203-GW-298-300

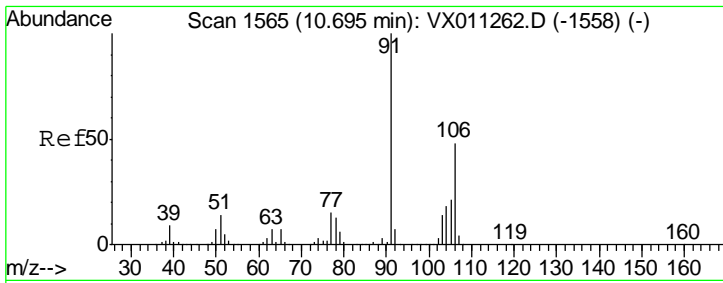
Tgt Ion	Resp	Lower	Upper
95	100		
174	95.2	0.0	191.2
176	92.6	0.0	184.8



#63
 Chlorobenzene-d5
 Concen: 50.000 ug/l
 RT: 10.11 min Scan# 1469
 Delta R.T. 0.00 min
 Lab File: VX011297.D
 Acq: 02 Aug 2019 12:13

Tgt Ion	Resp	Lower	Upper
117	100		
82	49.4	42.2	63.2
119	31.6	26.6	39.8

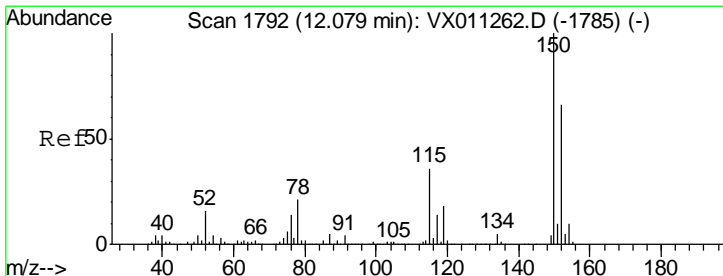
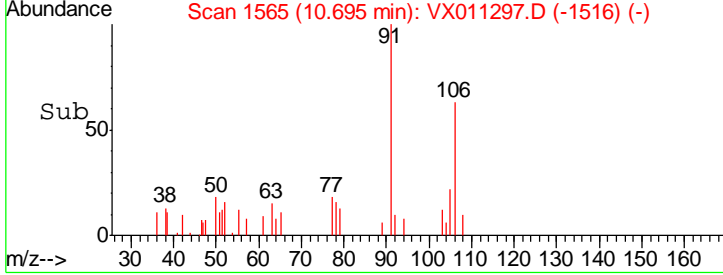
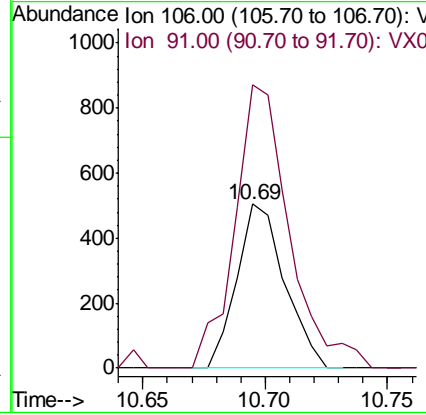
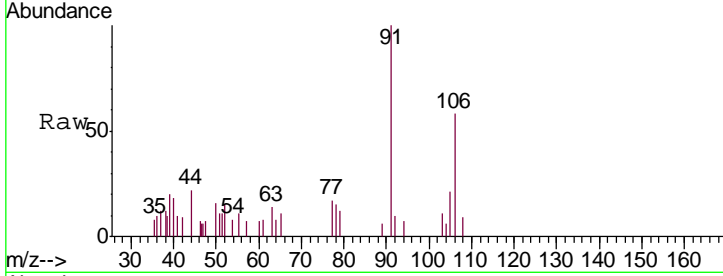




#69
 o-Xylene
 Concen: 0.234 ug/l
 RT: 10.69 min Scan# 1565
 Delta R.T. 0.00 min
 Lab File: VX011297.D
 Acq: 02 Aug 2019 12:13

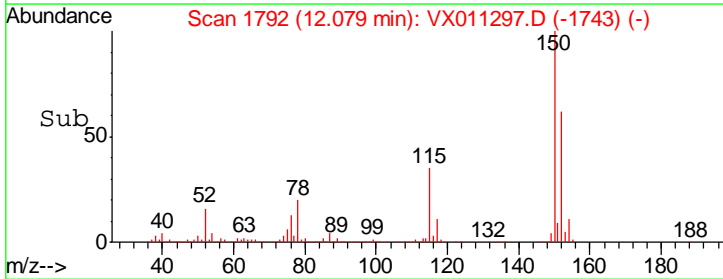
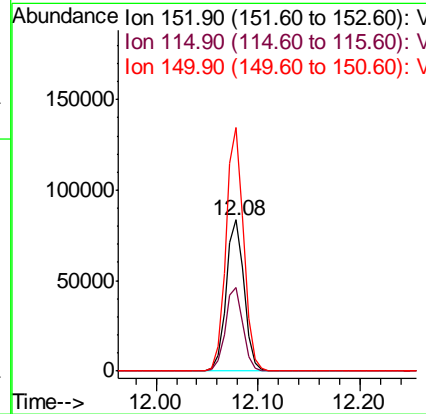
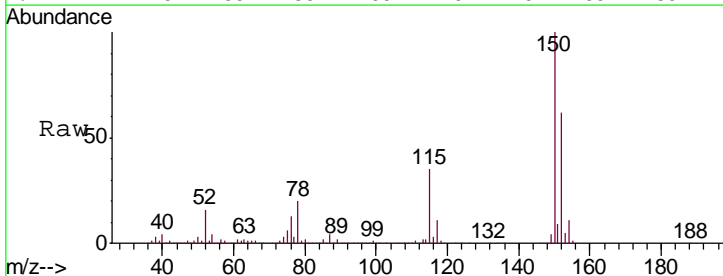
Instrument :
 MSVOA_X
ClientSampled :
 BP-VPB203-GW-298-300

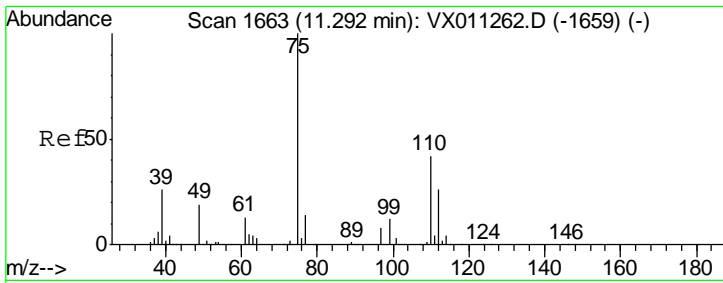
Tgt Ion:106 Resp: 689
 Ion Ratio Lower Upper
 106 100
 91 195.8 103.8 311.3



#72
 1,4-Dichlorobenzene-d4
 Concen: 50.000 ug/l
 RT: 12.08 min Scan# 1792
 Delta R.T. 0.00 min
 Lab File: VX011297.D
 Acq: 02 Aug 2019 12:13

Tgt Ion:152 Resp: 102271
 Ion Ratio Lower Upper
 152 100
 115 55.1 40.0 119.9
 150 158.6 0.0 350.4

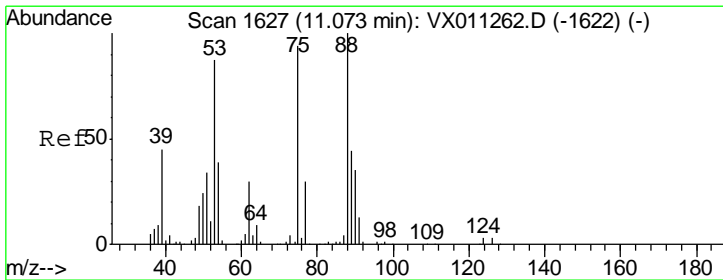
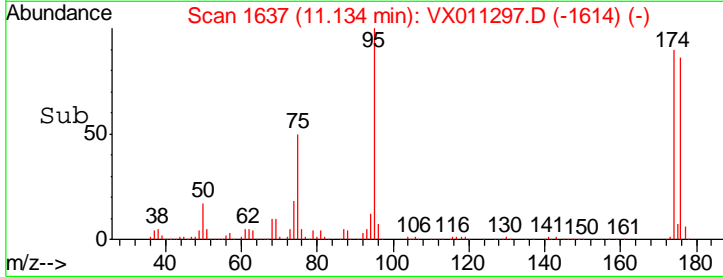
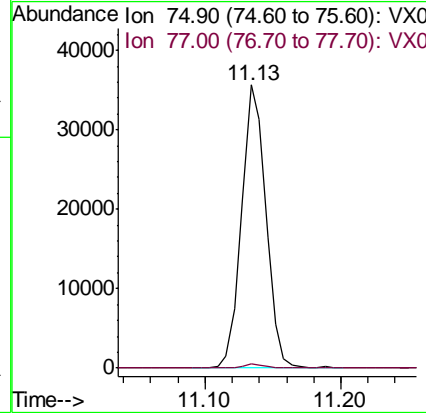
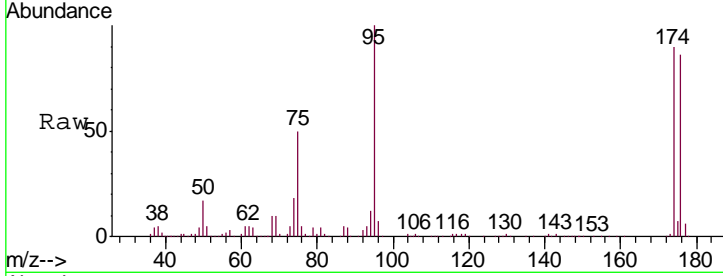




#76
 1,2,3-Trichloropropane
 Concen: 23.895 ug/l
 RT: 11.13 min Scan# 1637
 Delta R.T. -0.16 min
 Lab File: VX011297.D
 Acq: 02 Aug 2019 12:13

Instrument :
 MSVOA_X
 ClientSampled :
 BP-VPB203-GW-298-300

Tgt Ion: 75 Resp: 44503
 Ion Ratio Lower Upper
 75 100
 77 1.4 21.1 63.4#



#81
 trans-1,4-Dichloro-2-butene
 Concen: 62.555 ug/l
 RT: 11.13 min Scan# 1637
 Delta R.T. 0.06 min
 Lab File: VX011297.D
 Acq: 02 Aug 2019 12:13

Tgt Ion: 75 Resp: 44503
 Ion Ratio Lower Upper
 75 100
 53 0.1 78.2 117.4#
 89 0.1 37.9 56.9#

