

Data Path : Z:\voasrv\HPCHEM1\MSVOA\_X\Data\VX080223\  
 Data File : VX036768.D  
 Acq On : 02 Aug 2023 14:17  
 Operator : JC/MD  
 Sample : 03862-10  
 Misc : 5.0mL/MSVOA\_X/WATER  
 ALS Vial : 9 Sample Multiplier: 1

Instrument :  
 MSVOA\_X  
 ClientSampleId :  
 FIELD-BLANK-1

Integration Parameters: RTEINT.P

Integrator: RTE  
 Smoothing : ON Filtering: 5  
 Sampling : 1 Min Area: 3 % of largest Peak  
 Start Thrs: 0.2 Max Peaks: 100  
 Stop Thrs : 0 Peak Location: TOP

If leading or trailing edge < 100 prefer < Baseline drop else tangent >  
 Peak separation: 5

Method : Z:\voasrv\HPCHEM1\MSVOA\_X\Method\82X072123W.M  
 Title : SW846 8260

Signal : TIC: VX036768.D\data.ms

peak #	R.T. min	first scan	max scan	last scan	PK TY	peak height	corr. area	corr. % max.	% of total
1	1.557	70	77	79	rBV3	4135	8448	1.02%	0.192%
2	4.568	560	571	583	rBV	14442	47912	5.80%	1.088%
3	5.385	692	705	720	rBV	93909	275722	33.40%	6.262%
4	5.550	720	732	748	rVB	153332	438525	53.12%	9.959%
5	5.958	788	799	814	rBV	101784	270291	32.74%	6.139%
6	6.763	920	931	946	rBV	248318	600656	72.75%	13.642%
7	8.647	1234	1240	1261	rBV	519596	825596	100.00%	18.750%
8	10.055	1465	1471	1487	rBV	532720	727605	88.13%	16.525%
9	11.079	1634	1639	1652	rBV	438993	548620	66.45%	12.460%
10	12.018	1788	1793	1806	rBV	516746	659723	79.91%	14.983%

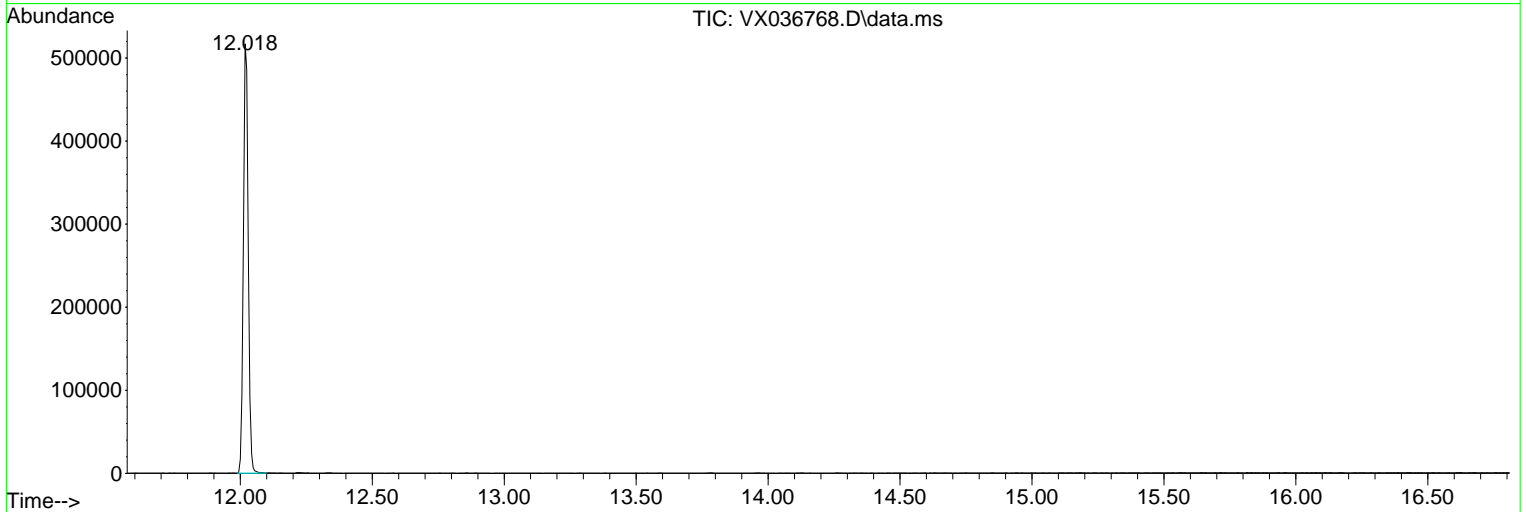
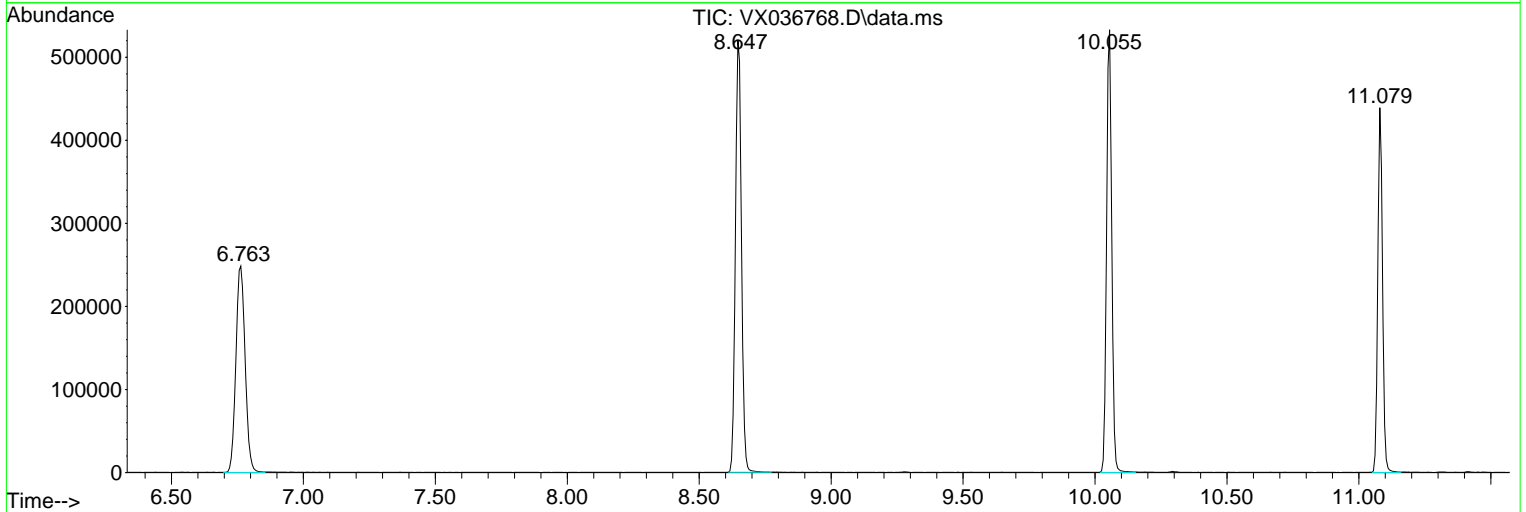
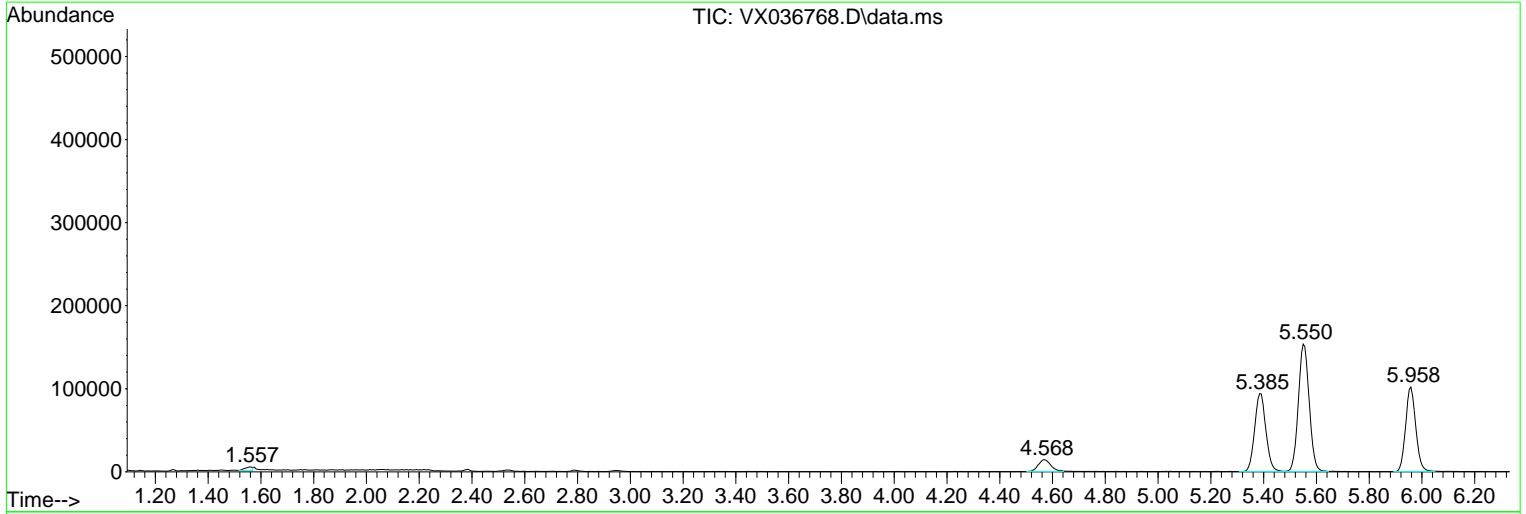
Sum of corrected areas: 4403098

Data Path : Z:\voasrv\HPCHEM1\MSVOA\_X\Data\VX080223\  
 Data File : VX036768.D  
 Acq On : 02 Aug 2023 14:17  
 Operator : JC/MD  
 Sample : 03862-10  
 Misc : 5.0mL/MSVOA\_X/WATER  
 ALS Vial : 9 Sample Multiplier: 1

Instrument :  
 MSVOA\_X  
 ClientSampleId :  
 FIELD-BLANK-1

Quant Method : Z:\voasrv\HPCHEM1\MSVOA\_X\Method\82X072123W.M  
 Quant Title : SW846 8260

TIC Library : C:\Database\NIST20.L  
 TIC Integration Parameters: LSCINT.P



Library Search Compound Report

Data Path : Z:\voasrv\HPCHEM1\MSVOA\_X\Data\VX080223\  
Data File : VX036768.D  
Acq On : 02 Aug 2023 14:17  
Operator : JC/MD  
Sample : 03862-10  
Misc : 5.0mL/MSVOA\_X/WATER  
ALS Vial : 9 Sample Multiplier: 1

Instrument :  
MSVOA\_X  
ClientSampleId :  
FIELD-BLANK-1

Quant Method : Z:\voasrv\HPCHEM1\MSVOA\_X\Method\82X072123W.M  
Quant Title : SW846 8260

TIC Library : C:\Database\NIST20.L  
TIC Integration Parameters: LSCINT.P

No Library Search Compounds Detected

\*\*\*\*\*

Data Path : Z:\voasrv\HPCHEM1\MSVOA\_X\Data\VX080223\  
Data File : VX036768.D  
Acq On : 02 Aug 2023 14:17  
Operator : JC/MD  
Sample : 03862-10  
Misc : 5.0mL/MSVOA\_X/WATER  
ALS Vial : 9 Sample Multiplier: 1

Instrument :  
MSVOA\_X  
ClientSampleId :  
FIELD-BLANK-1

Quant Method : Z:\voasrv\HPCHEM1\MSVOA\_X\Method\82X072123W.M  
Quant Title : SW846 8260

TIC Library : C:\Database\NIST20.L  
TIC Integration Parameters: LSCINT.P

TIC Top Hit name	RT	EstConc	Units	Response	--Internal Standard--		
					#	RT	Resp Conc

---