

Data Path : Z:\VOASRV\HPCHEM1\MSVOA X\DATA\VX080420\
 Data File : VX017775.D
 Acq On : 04 Aug 2020 17:19
 Operator : JC/SP
 Sample : PB130720ZHE#17
 Misc : 5.0mL/MSVOA X/WATER
 ALS Vial : 20 Sample Multiplier: 1

Instrument :
 MSVOA_X
 ClientSampleId :
 PB130720ZHE#16

Quant Time: Aug 05 01:50:36 2020
 Quant Method : Z:\VOASRV\HPCHEM1\MSVOA_X\METHOD\82X072320W.M
 Quant Title : SW846 8260
 QLast Update : Fri Jul 24 05:48:09 2020
 Response via : Initial Calibration

Internal Standards	R.T.	QIon	Response	Conc	Units	Dev(Min)
1) Pentafluorobenzene	5.64	168	593868	50.00	ug/l	0.00
34) 1,4-Difluorobenzene	6.84	114	891078	50.00	ug/l	0.00
63) Chlorobenzene-d5	10.10	117	829038	50.00	ug/l	0.00
72) 1,4-Dichlorobenzene-d4	12.06	152	408102	50.00	ug/l	0.00

System Monitoring Compounds

33) 1,2-Dichloroethane-d4	6.04	65	390277	51.16	ug/l	0.00
Spiked Amount	50.000		Recovery	=	102.32%	
35) Dibromofluoromethane	5.47	113	302324	50.73	ug/l	0.00
Spiked Amount	50.000		Recovery	=	101.46%	
50) Toluene-d8	8.70	98	1049371	48.81	ug/l	0.00
Spiked Amount	50.000		Recovery	=	97.62%	
62) 4-Bromofluorobenzene	11.12	95	397942	46.25	ug/l	0.00
Spiked Amount	50.000		Recovery	=	92.50%	

Target Compounds

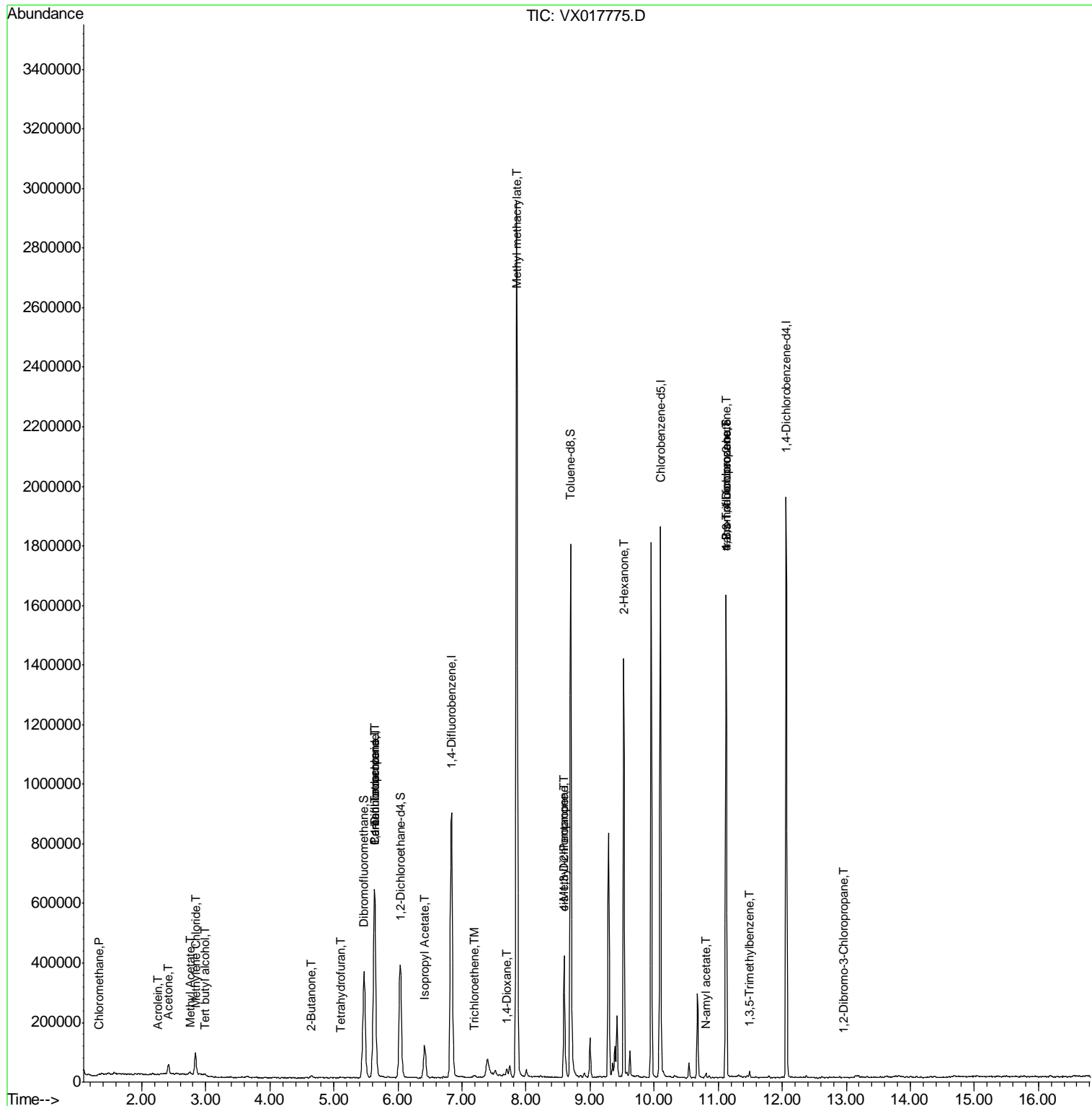
					Qvalue	
2) Dichlorodifluoromethane	1.18	85	540	Below Cal	#	68
3) Chloromethane	1.32	50	523	0.438	ug/l #	42
5) Bromomethane	1.65	94	887	Below Cal	#	39
6) Chloroethane	1.68	64	424	Below Cal	#	74
8) Diethyl Ether	2.37	74	502	Below Cal		83
11) Tert butyl alcohol	3.00	59	2466	1.534	ug/l #	80
13) Acrolein	2.26	56	298	4.387	ug/l #	1
16) Acetone	2.42	43	39225	11.683	ug/l	98
18) Methyl Acetate	2.75	43	9109	1.152	ug/l #	79
20) Methylene Chloride	2.84	84	34043	4.207	ug/l	95
25) 2-Butanone	4.64	43	7681	1.610	ug/l	97
29) Tetrahydrofuran	5.11	42	3620	1.225	ug/l #	79
36) 1,1-Dichloropropene	5.63	75	43414	5.080	ug/l #	53
38) Carbon Tetrachloride	5.63	117	61874	5.962	ug/l #	17
43) Isopropyl Acetate	6.42	43	155620	10.087	ug/l	99
44) Trichloroethene	7.19	130	2954	0.413	ug/l	65
48) Methyl methacrylate	7.85	41	248337	32.472	ug/l #	45
49) 1,4-Dioxane	7.71	88	528	3.601	ug/l #	1
51) 4-Methyl-2-Pentanone	8.60	43	150433	16.342	ug/l #	47
54) cis-1,3-Dichloropropene	8.60	75	65770	5.964	ug/l #	54
59) 2-Hexanone	9.52	43	157582	22.737	ug/l #	52
74) N-amyl acetate	10.81	43	7760	0.624	ug/l #	55
76) 1,2,3-Trichloropropane	11.12	75	202160	24.081	ug/l #	35
80) 1,3,5-Trimethylbenzene	11.49	105	6648	0.278	ug/l	88
81) trans-1,4-Dichloro-2-buten	11.12	75	202160	60.680	ug/l #	12
92) 1,2-Dibromo-3-Chloropropan	12.97	75	203	2.655	ug/l #	14

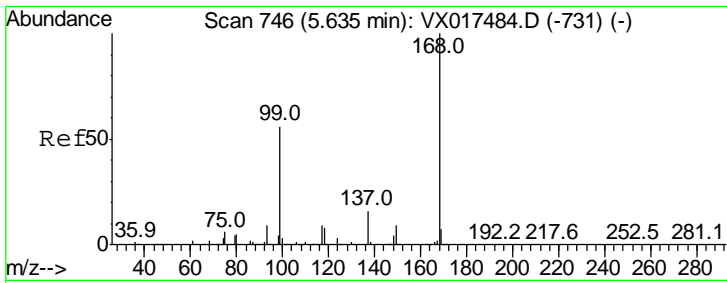
(#) = qualifier out of range (m) = manual integration (+) = signals summed

Data Path : Z:\VOASRV\HPCHEM1\MSVOA X\DATA\VX080420\
 Data File : VX017775.D
 Acq On : 04 Aug 2020 17:19
 Operator : JC/SP
 Sample : PB130720ZHE#17
 Misc : 5.0mL/MSVOA X/WATER
 ALS Vial : 20 Sample Multiplier: 1

Instrument :
 MSVOA_X
 ClientSampleId :
 PB130720ZHE#16

Quant Time: Aug 05 01:50:36 2020
 Quant Method : Z:\VOASRV\HPCHEM1\MSVOA_X\METHOD\82X072320W.M
 Quant Title : SW846 8260
 QLast Update : Fri Jul 24 05:48:09 2020
 Response via : Initial Calibration

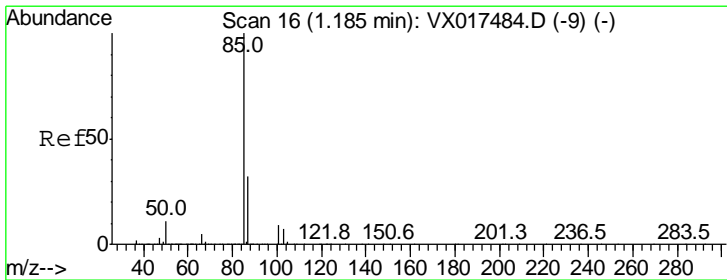
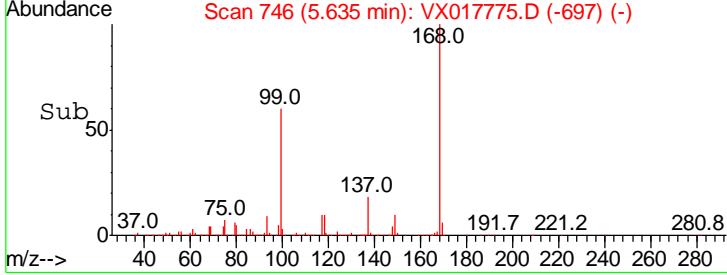
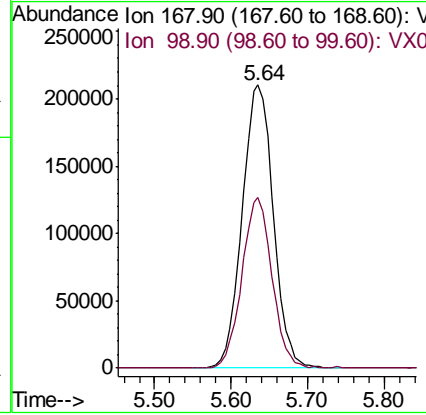
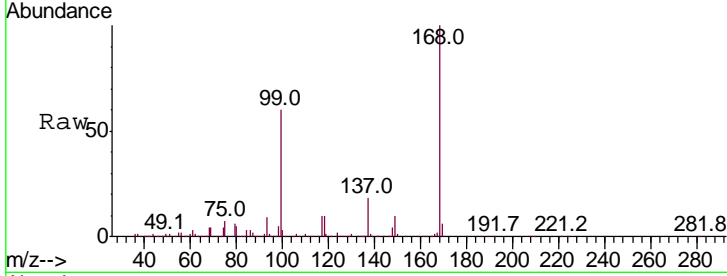




#1
 Pentafluorobenzene
 Concen: 50.000 ug/l
 RT: 5.64 min Scan# 746
 Delta R.T. 0.00 min
 Lab File: VX017775.D
 Acq: 04 Aug 2020 17:19

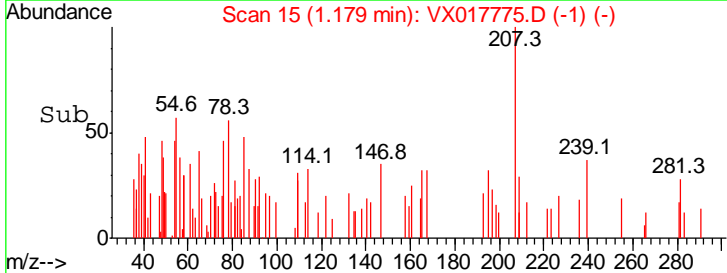
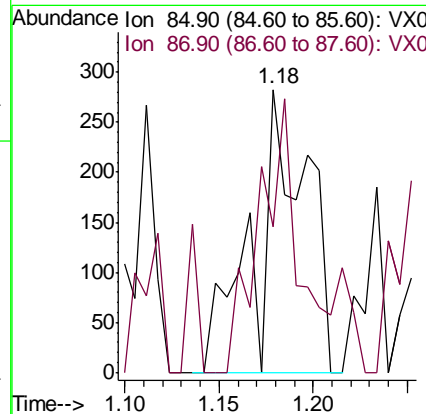
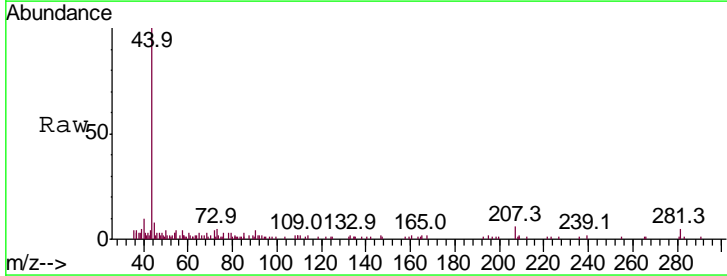
Instrument : MSVOA_X
 ClientSampled : PB130720ZHE#16

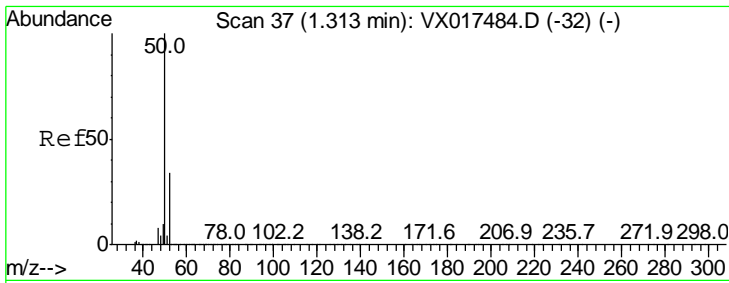
Tgt Ion	Resp	Lower	Upper
168	100		
99	60.3	43.4	65.2



#2
 Dichlorodifluoromethane
 Concen: Below Cal
 RT: 1.18 min Scan# 15
 Delta R.T. -0.01 min
 Lab File: VX017775.D
 Acq: 04 Aug 2020 17:19

Tgt Ion	Resp	Lower	Upper
85	100		
87	14.1	16.1	48.3

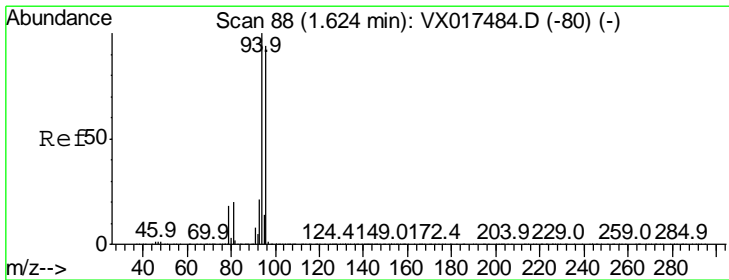
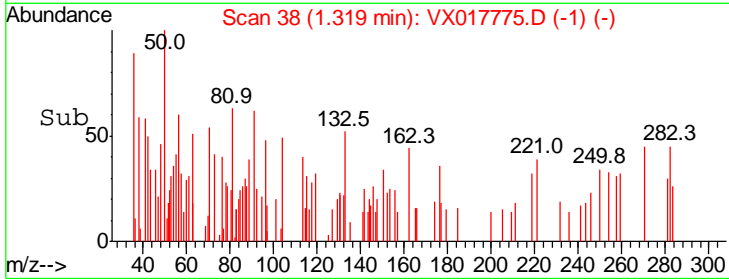
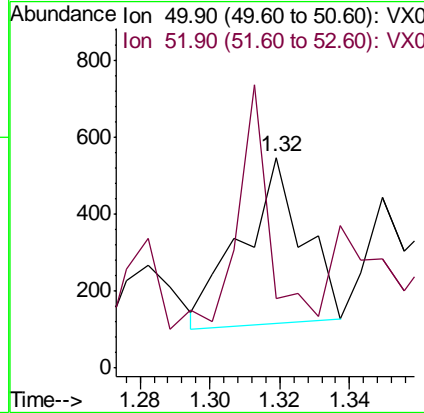
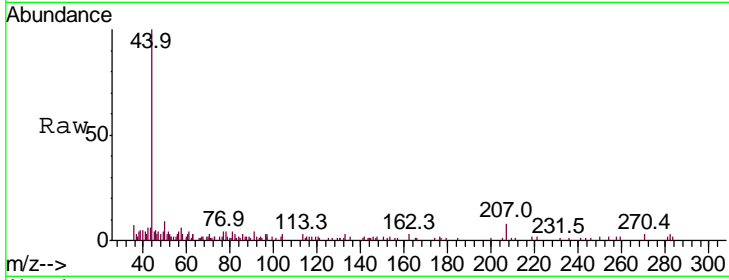




#3
 Chloromethane
 Concen: 0.438 ug/l
 RT: 1.32 min Scan# 38
 Delta R.T. 0.01 min
 Lab File: VX017775.D
 Acq: 04 Aug 2020 17:19

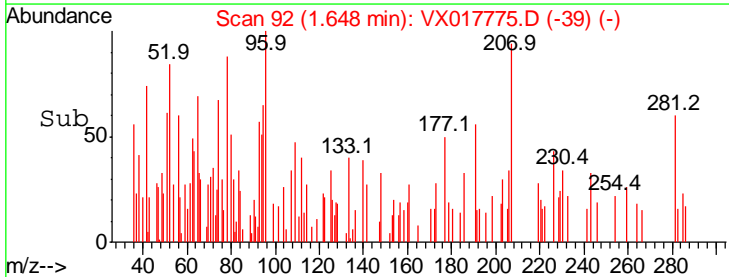
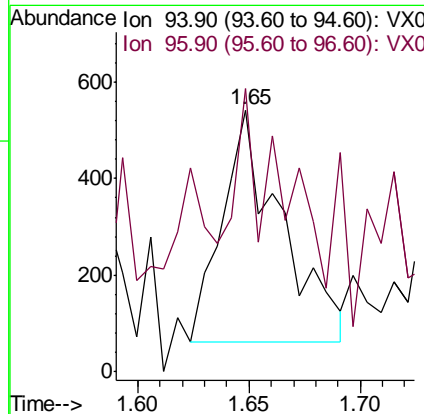
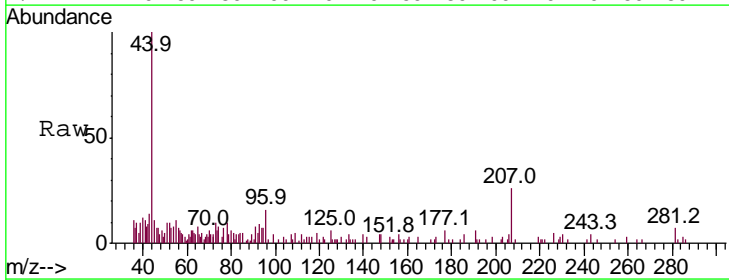
Instrument : MSVOA_X
 ClientSampled : PB130720ZHE#16

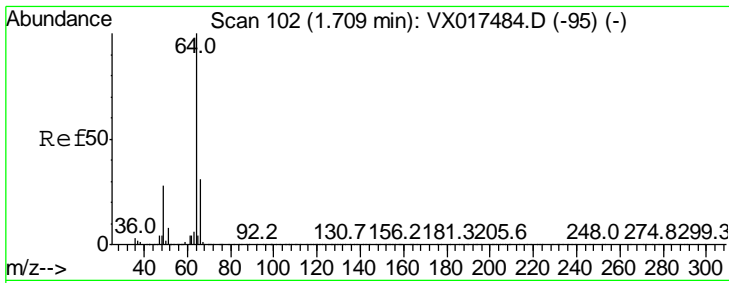
Tgt Ion	Ratio	Lower	Upper
50	100		
52	0.0	25.9	38.9#



#5
 Bromomethane
 Concen: Below Cal
 RT: 1.65 min Scan# 92
 Delta R.T. 0.03 min
 Lab File: VX017775.D
 Acq: 04 Aug 2020 17:19

Tgt Ion	Ratio	Lower	Upper
94	100		
96	34.1	74.1	111.1#

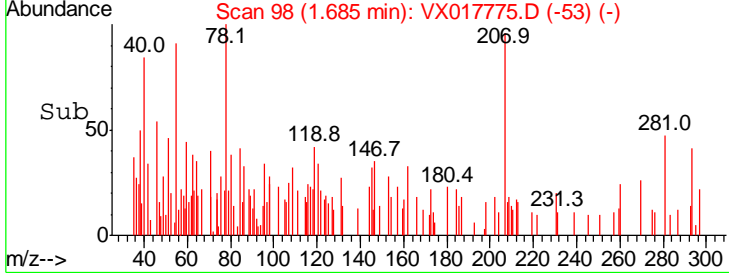
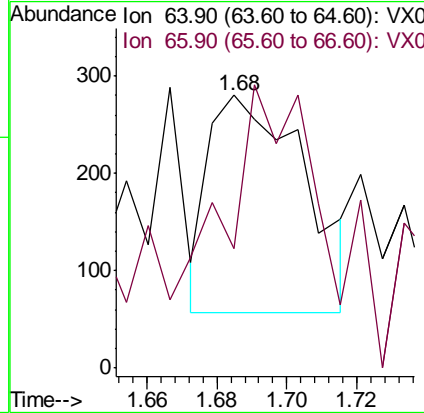
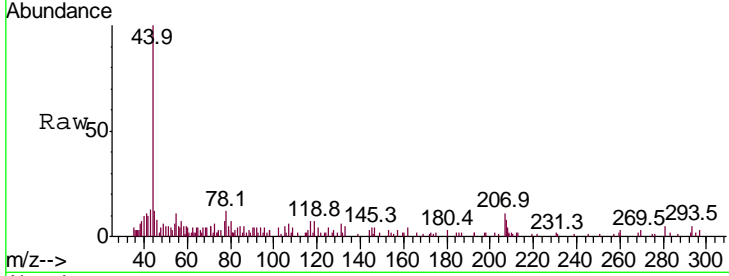




#6
 Chloroethane
 Concen: Below Cal
 RT: 1.68 min Scan# 98
 Delta R.T. -0.02 min
 Lab File: VX017775.D
 Acq: 04 Aug 2020 17:19

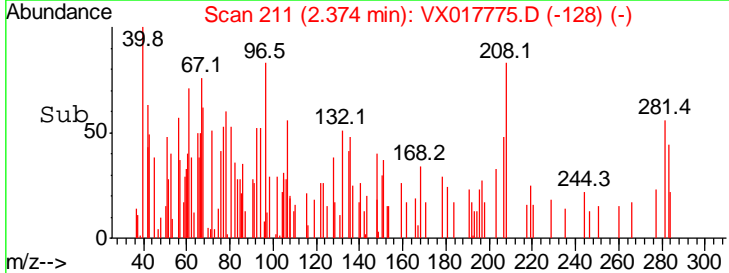
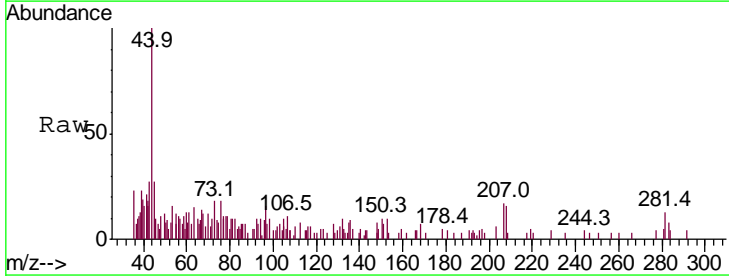
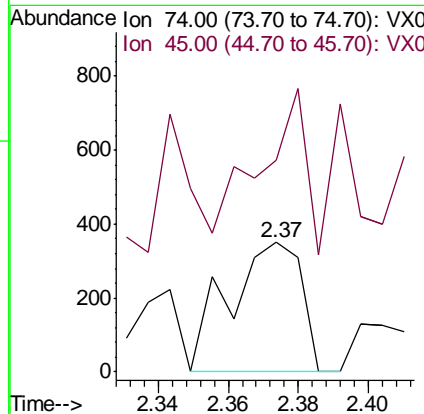
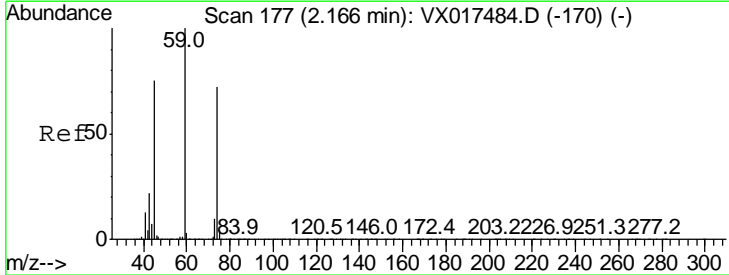
Instrument :
 MSVOA_X
 ClientSampled :
 PB130720ZHE#16

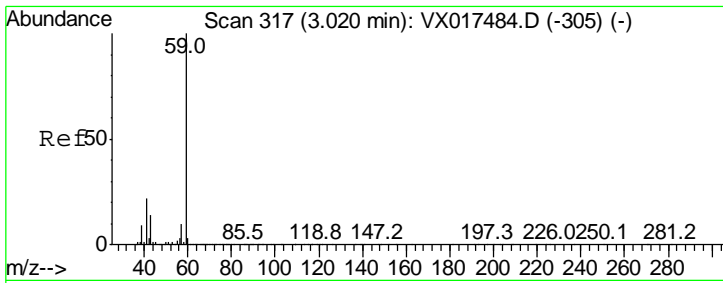
Tgt Ion: 64 Resp: 424
 Ion Ratio Lower Upper
 64 100
 66 45.7 24.9 37.3#



#8
 Diethyl Ether
 Concen: Below Cal
 RT: 2.37 min Scan# 211
 Delta R.T. 0.21 min
 Lab File: VX017775.D
 Acq: 04 Aug 2020 17:19

Tgt Ion: 74 Resp: 502
 Ion Ratio Lower Upper
 74 100
 45 84.5 50.8 152.5

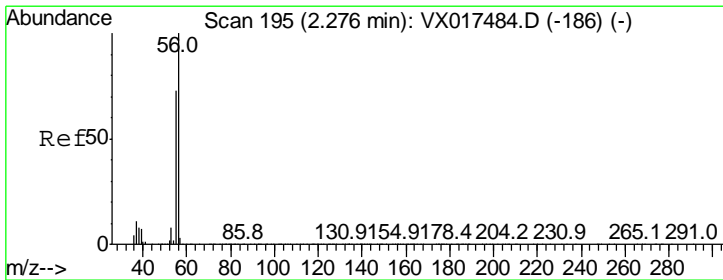
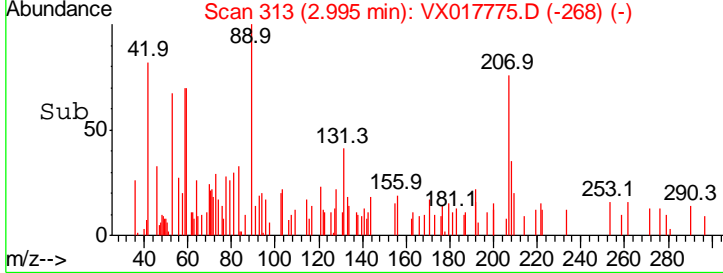
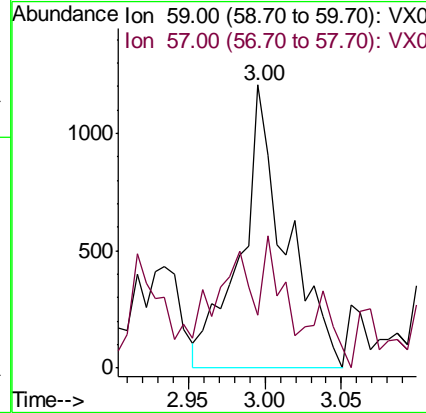
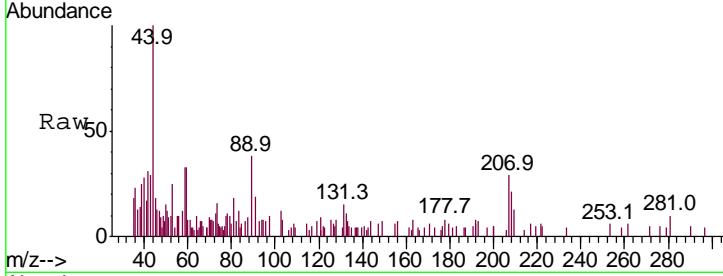




#11
 Tert butyl alcohol
 Concen: 1.534 ug/l
 RT: 3.00 min Scan# 313
 Delta R.T. -0.02 min
 Lab File: VX017775.D
 Acq: 04 Aug 2020 17:19

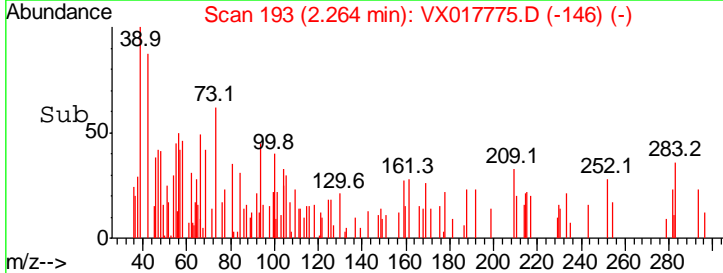
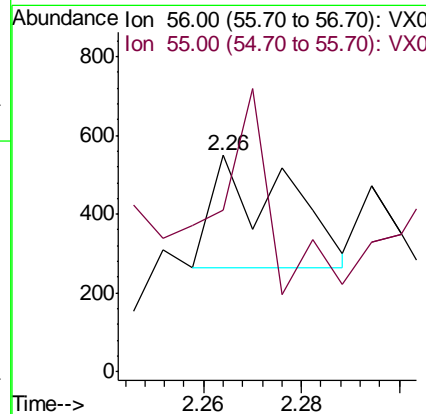
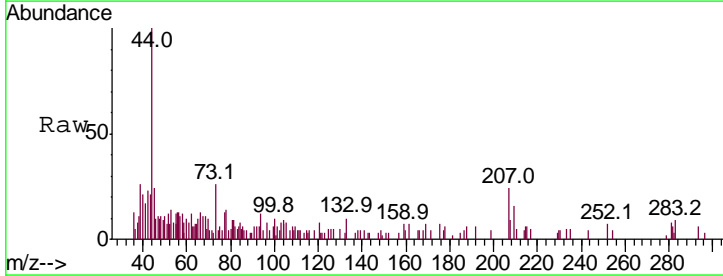
Instrument :
 MSVOA_X
 ClientSampled :
 PB130720ZHE#16

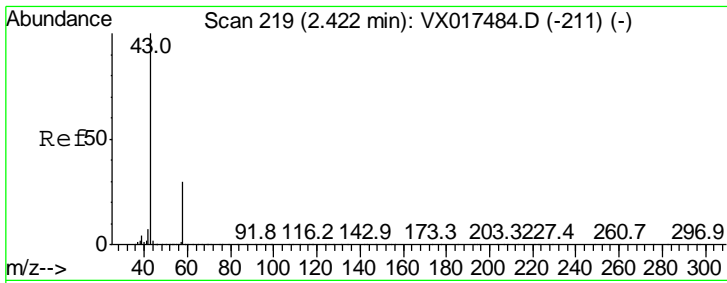
Tgt Ion: 59 Resp: 2466
 Ion Ratio Lower Upper
 59 100
 57 18.4 8.6 12.8#



#13
 Acrolein
 Concen: 4.387 ug/l
 RT: 2.26 min Scan# 193
 Delta R.T. -0.01 min
 Lab File: VX017775.D
 Acq: 04 Aug 2020 17:19

Tgt Ion: 56 Resp: 298
 Ion Ratio Lower Upper
 56 100
 55 169.8 57.4 86.2#

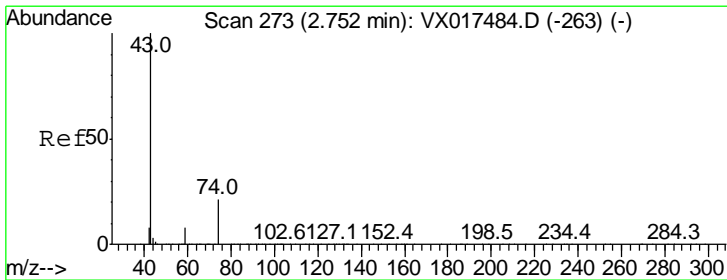
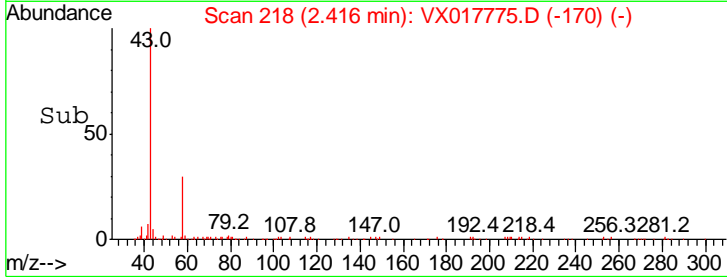
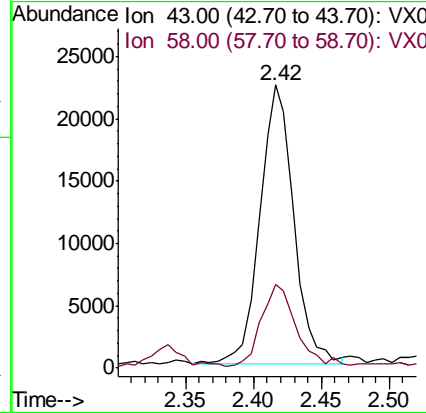
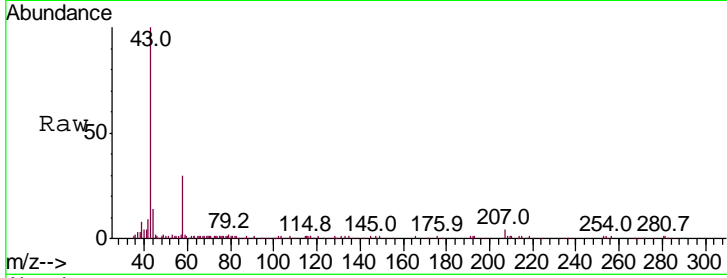




#16
 Acetone
 Concen: 11.683 ug/l
 RT: 2.42 min Scan# 218
 Delta R.T. -0.01 min
 Lab File: VX017775.D
 Acq: 04 Aug 2020 17:19

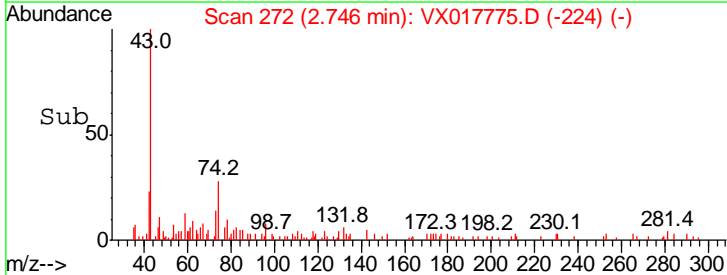
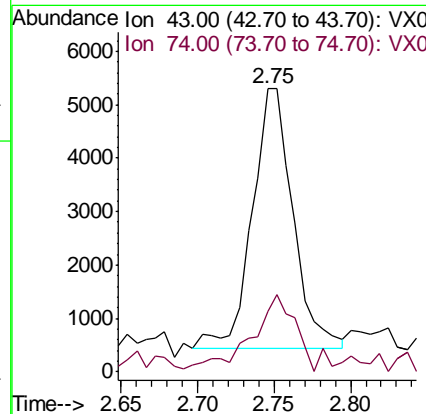
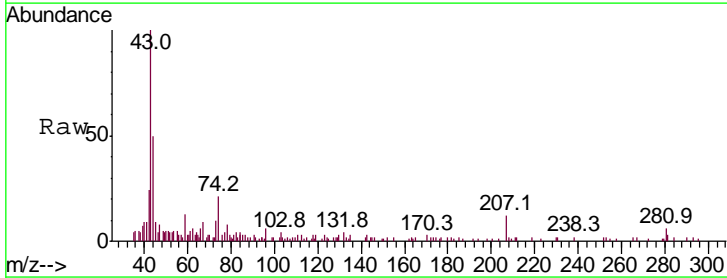
Instrument : MSVOA_X
 ClientSampled : PB130720ZHE#16

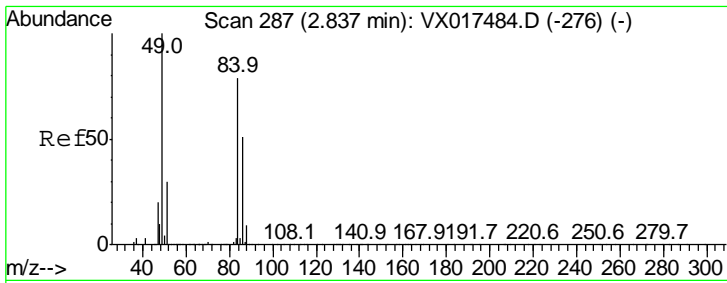
Tgt Ion	Ratio	Lower	Upper
43	100		
58	29.1	24.2	36.4



#18
 Methyl Acetate
 Concen: 1.152 ug/l
 RT: 2.75 min Scan# 272
 Delta R.T. -0.01 min
 Lab File: VX017775.D
 Acq: 04 Aug 2020 17:19

Tgt Ion	Ratio	Lower	Upper
43	100		
74	32.0	17.5	26.3#

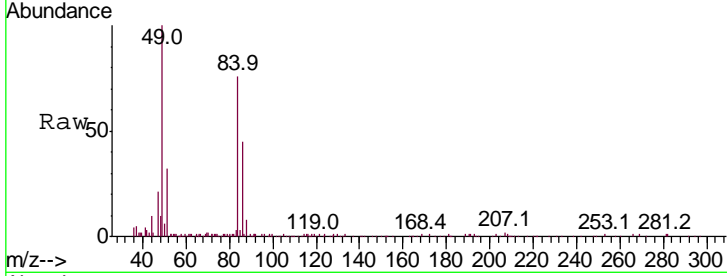




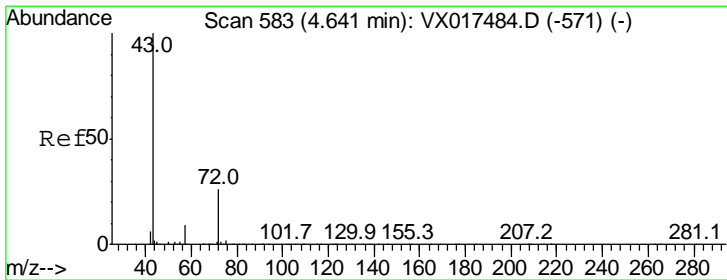
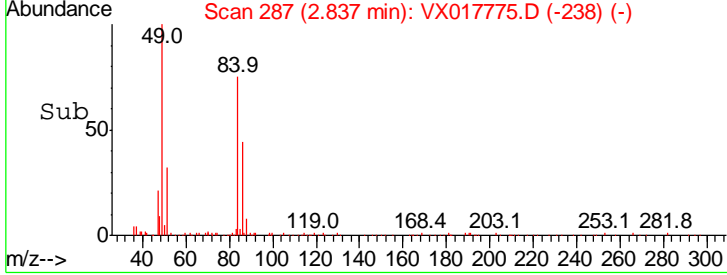
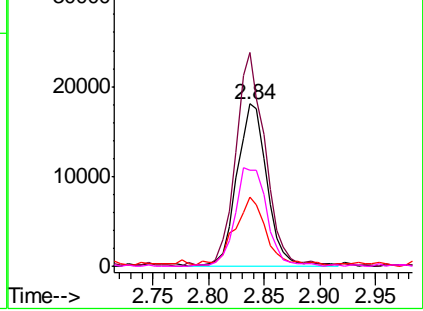
#20
 Methylene Chloride
 Concen: 4.207 ug/l
 RT: 2.84 min Scan# 287
 Delta R.T. 0.00 min
 Lab File: VX017775.D
 Acq: 04 Aug 2020 17:19

Instrument : MSVOA_X
 ClientSampled : PB130720ZHE#16

Tgt Ion	Resp	Lower	Upper
84	100		
49	129.6	100.3	150.5
51	41.4	30.5	45.7
86	59.0	51.1	76.7

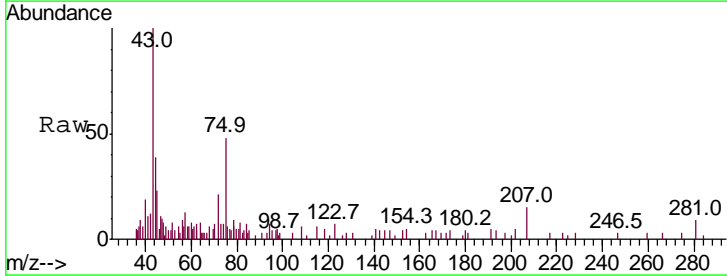


Abundance Ion 83.90 (83.60 to 84.60): VX0
 Ion 48.90 (48.60 to 49.60): VX0
 Ion 50.90 (50.60 to 51.60): VX0
 Ion 85.90 (85.60 to 86.60): VX0

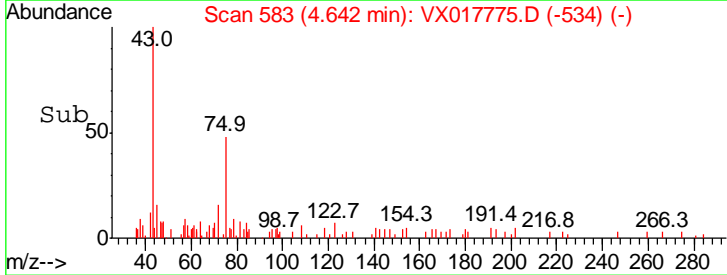
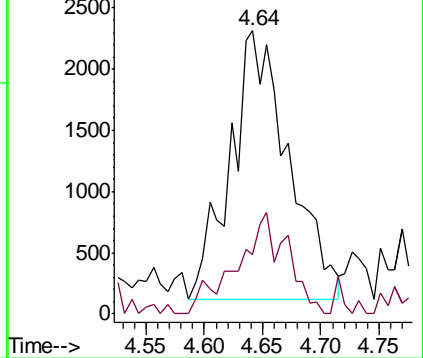


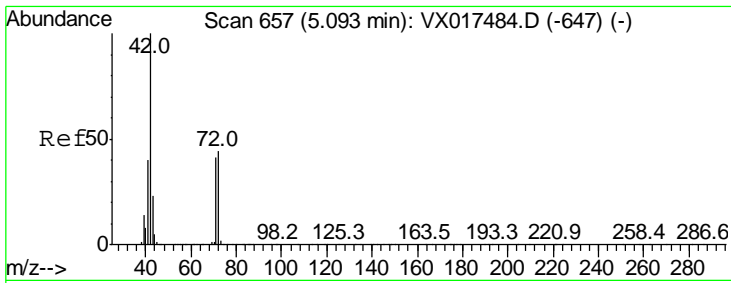
#25
 2-Butanone
 Concen: 1.610 ug/l
 RT: 4.64 min Scan# 583
 Delta R.T. 0.00 min
 Lab File: VX017775.D
 Acq: 04 Aug 2020 17:19

Tgt Ion	Resp	Lower	Upper
43	100		
72	22.1	19.0	28.4



Abundance Ion 43.00 (42.70 to 43.70): VX0
 Ion 72.00 (71.70 to 72.70): VX0

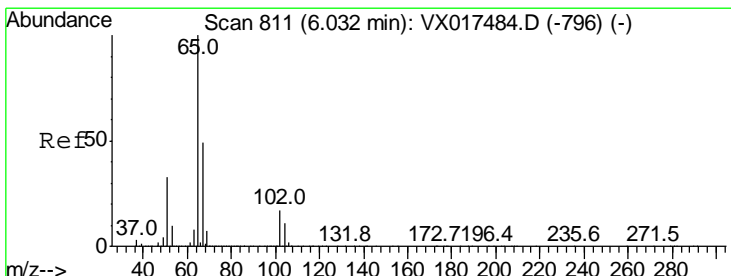
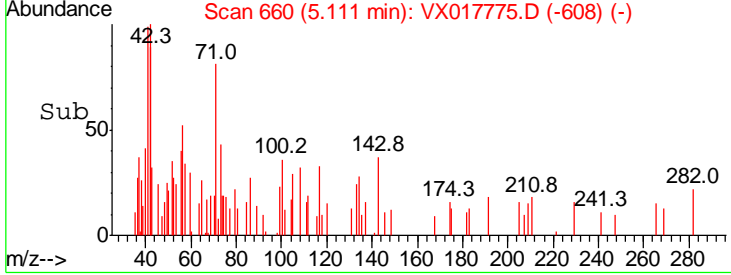
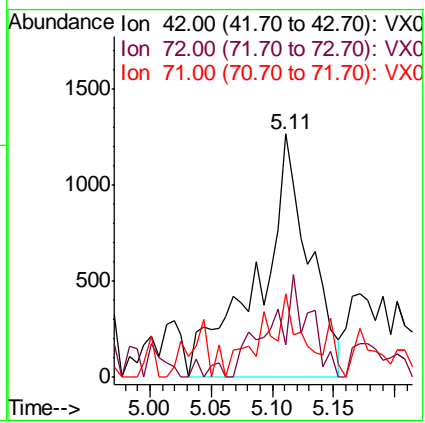
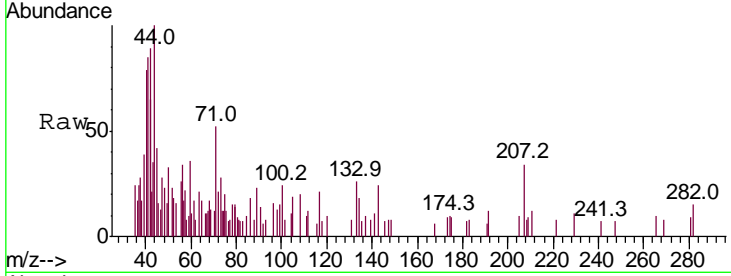




#29
 Tetrahydrofuran
 Concen: 1.225 ug/l
 RT: 5.11 min Scan# 660
 Delta R.T. 0.02 min
 Lab File: VX017775.D
 Acq: 04 Aug 2020 17:19

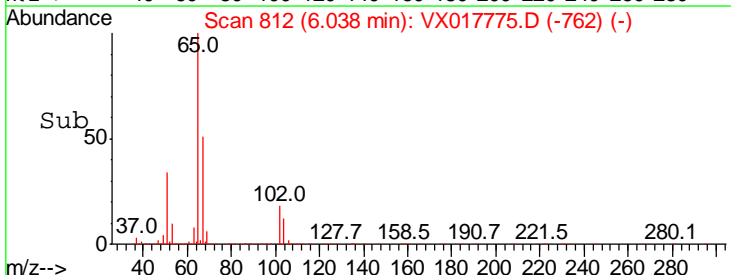
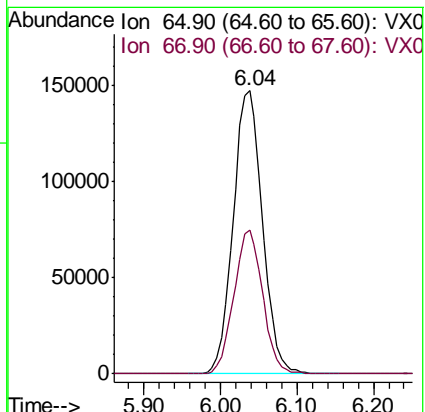
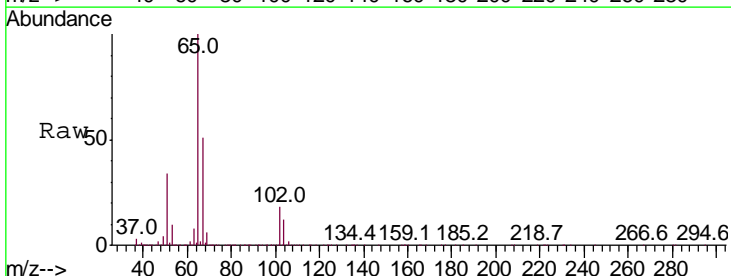
Instrument : MSVOA_X
 ClientSampled : PB130720ZHE#16

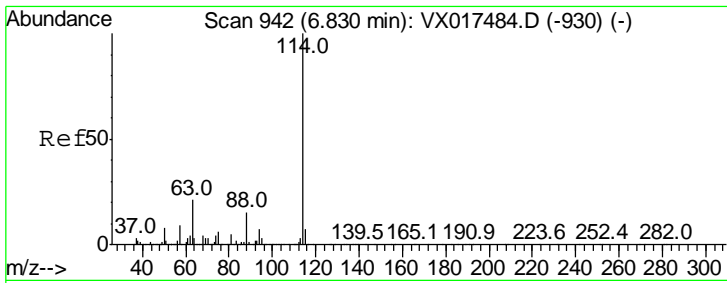
Tgt Ion	Resp	Lower	Upper
42	100		
72	32.4	35.5	53.3#
71	26.3	33.0	49.4#



#33
 1,2-Dichloroethane-d4
 Concen: 51.160 ug/l
 RT: 6.04 min Scan# 812
 Delta R.T. 0.01 min
 Lab File: VX017775.D
 Acq: 04 Aug 2020 17:19

Tgt Ion	Resp	Lower	Upper
65	100		
67	49.9	0.0	102.8

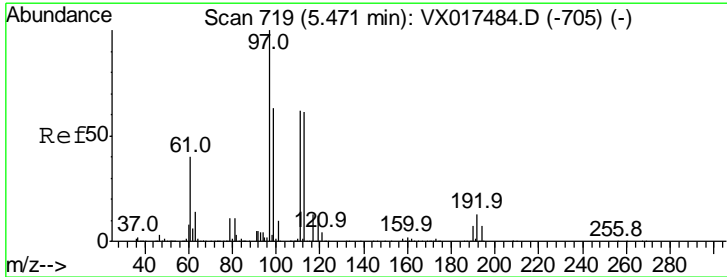
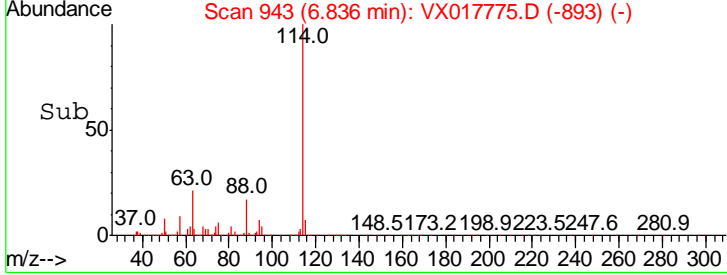
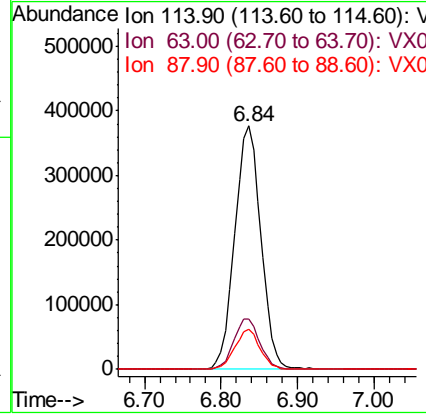
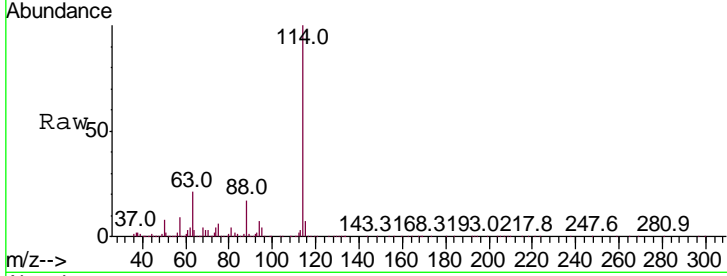




#34
 1,4-Difluorobenzene
 Concen: 50.000 ug/l
 RT: 6.84 min Scan# 943
 Delta R.T. 0.01 min
 Lab File: VX017775.D
 Acq: 04 Aug 2020 17:19

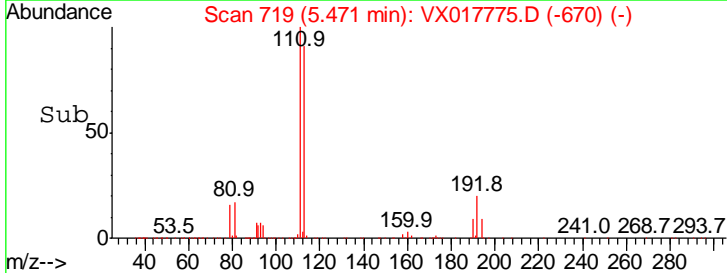
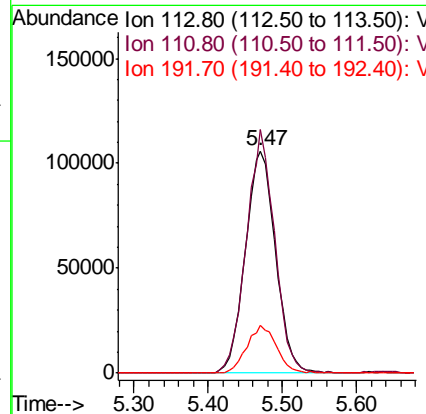
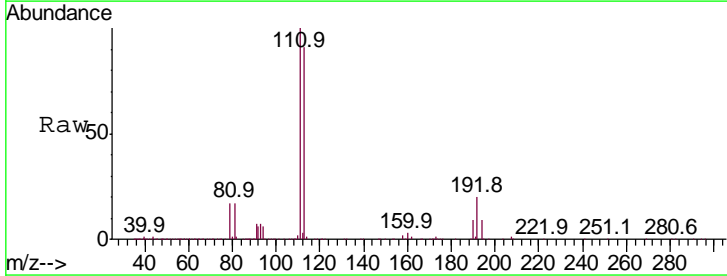
Instrument : MSVOA_X
 ClientSampled : PB130720ZHE#16

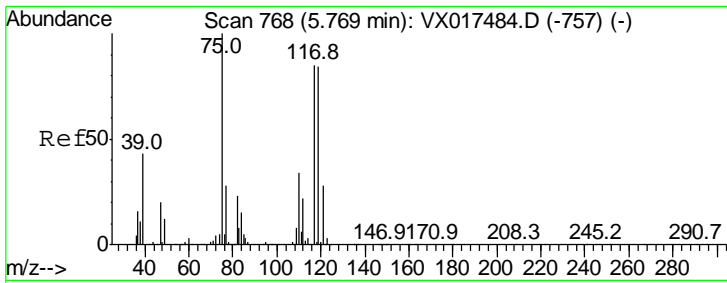
Tgt Ion	Resp	Lower	Upper
114	100		
63	20.7	0.0	40.6
88	16.7	0.0	33.4



#35
 Dibromofluoromethane
 Concen: 50.729 ug/l
 RT: 5.47 min Scan# 719
 Delta R.T. 0.00 min
 Lab File: VX017775.D
 Acq: 04 Aug 2020 17:19

Tgt Ion	Resp	Lower	Upper
113	100		
111	102.4	80.7	121.1
192	21.1	16.9	25.3

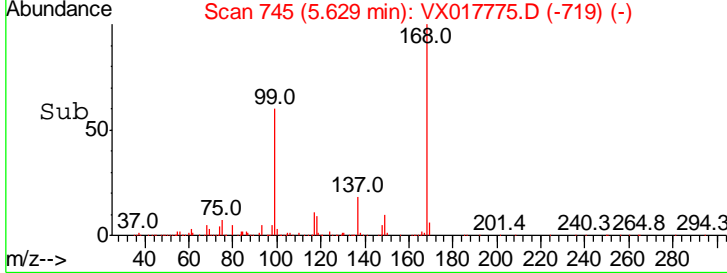
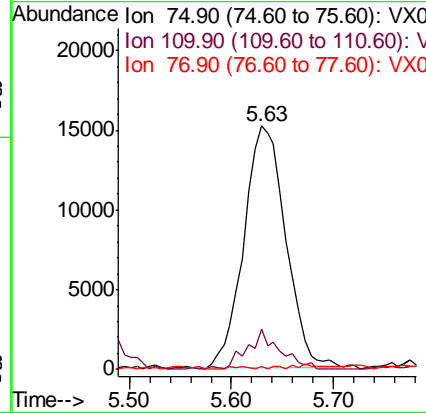
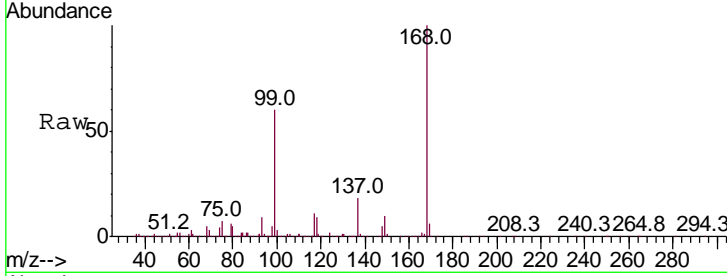




#36
 1,1-Dichloropropene
 Concen: 5.080 ug/l
 RT: 5.63 min Scan# 745
 Delta R.T. -0.14 min
 Lab File: VX017775.D
 Acq: 04 Aug 2020 17:19

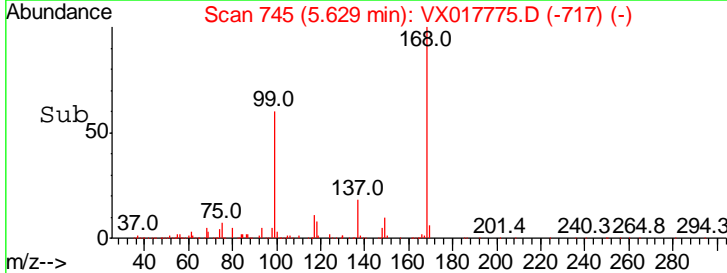
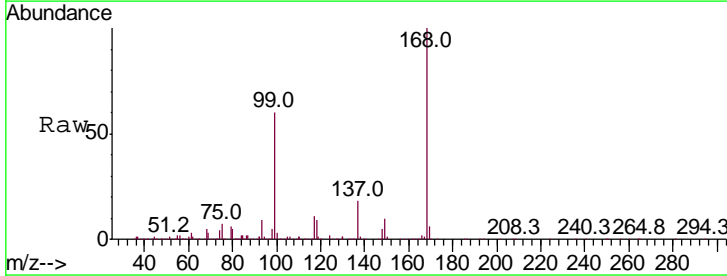
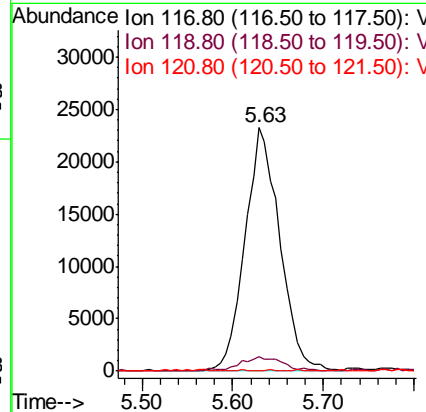
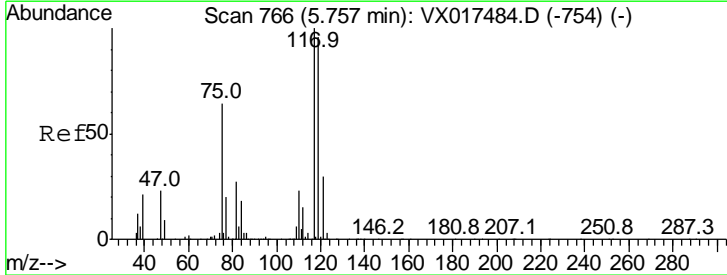
Instrument :
 MSVOA_X
 ClientSampled :
 PB130720ZHE#16

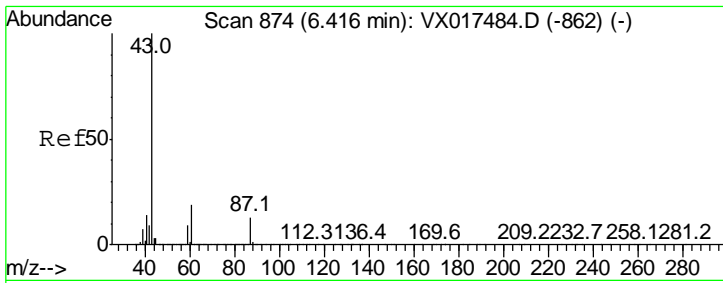
Tgt Ion	Resp	Lower	Upper
75	100		
110	12.5	18.1	54.3#
77	0.5	24.6	37.0#



#38
 Carbon Tetrachloride
 Concen: 5.962 ug/l
 RT: 5.63 min Scan# 745
 Delta R.T. -0.13 min
 Lab File: VX017775.D
 Acq: 04 Aug 2020 17:19

Tgt Ion	Resp	Lower	Upper
117	100		
119	6.0	75.4	113.0#
121	0.0	24.3	36.5#

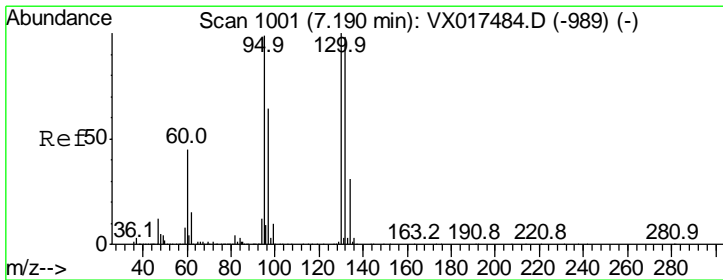
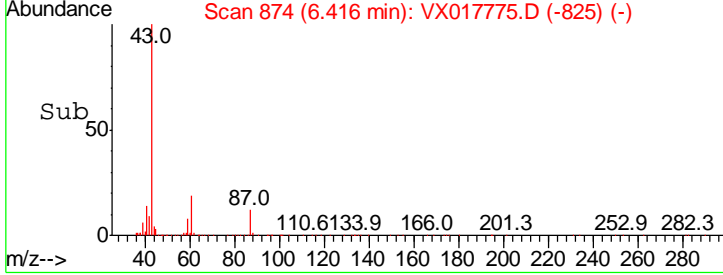
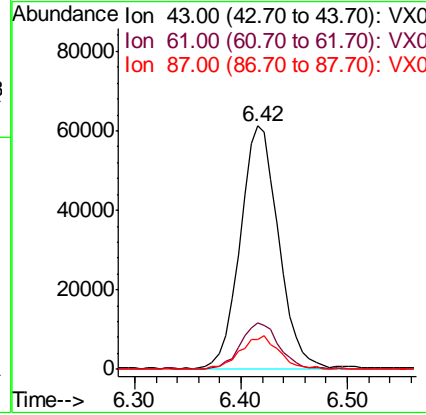
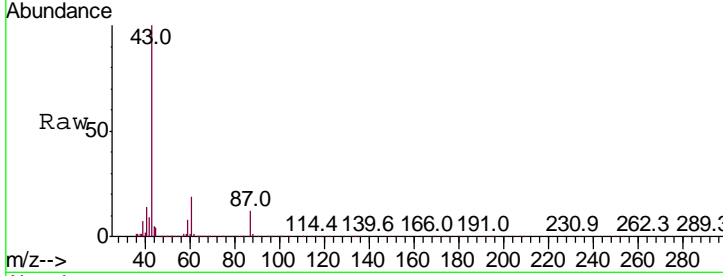




#43
 Isopropyl Acetate
 Concen: 10.087 ug/l
 RT: 6.42 min Scan# 874
 Delta R.T. 0.00 min
 Lab File: VX017775.D
 Acq: 04 Aug 2020 17:19

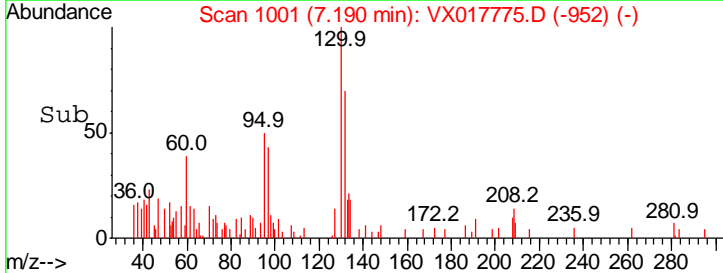
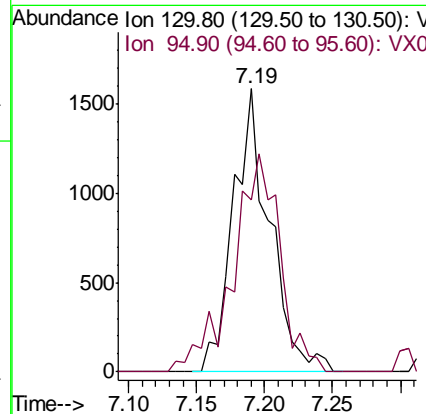
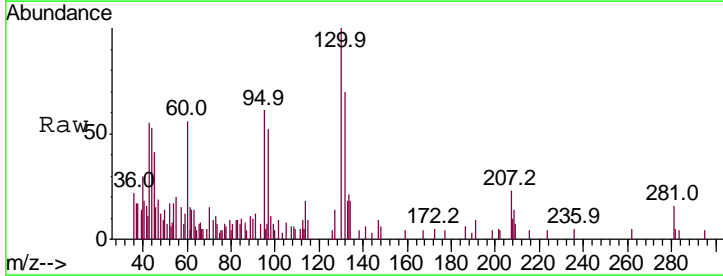
Instrument : MSVOA_X
 ClientSampled : PB130720ZHE#16

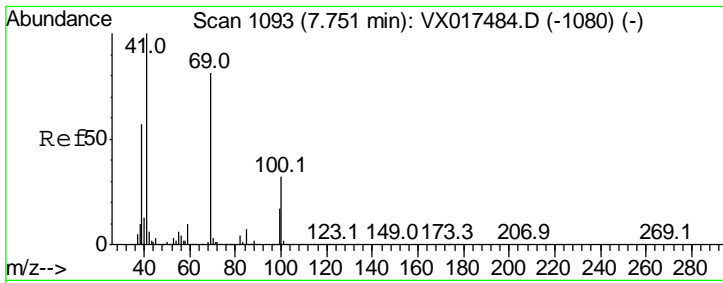
Tgt Ion	Resp	Lower	Upper
43	155620		
61	19.2	15.5	23.3
87	13.9	10.5	15.7



#44
 Trichloroethene
 Concen: 0.413 ug/l
 RT: 7.19 min Scan# 1001
 Delta R.T. 0.00 min
 Lab File: VX017775.D
 Acq: 04 Aug 2020 17:19

Tgt Ion	Resp	Lower	Upper
130	2954		
95	60.9	0.0	189.0

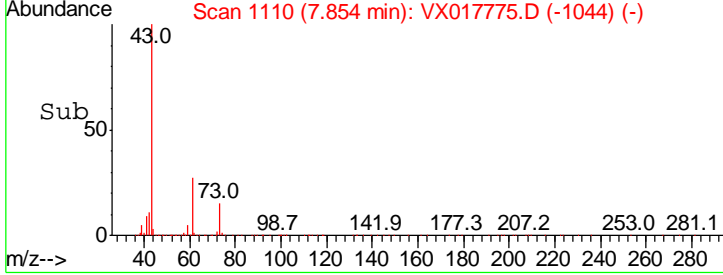
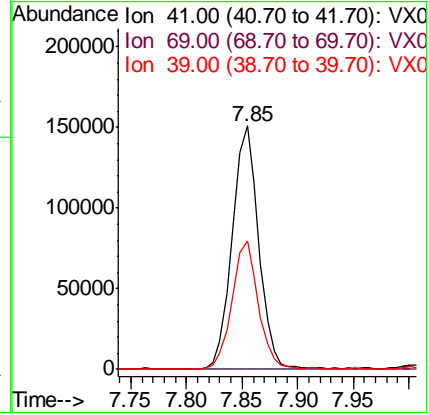
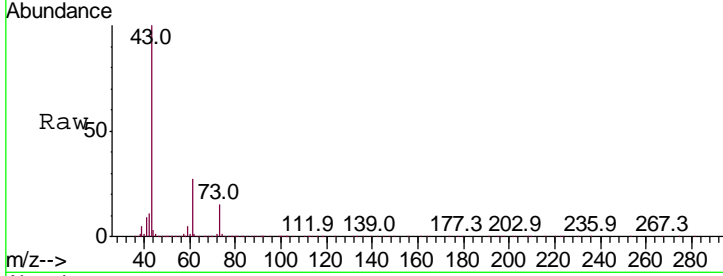




#48
 Methyl methacrylate
 Concen: 32.472 ug/l
 RT: 7.85 min Scan# 1110
 Delta R.T. 0.10 min
 Lab File: VX017775.D
 Acq: 04 Aug 2020 17:19

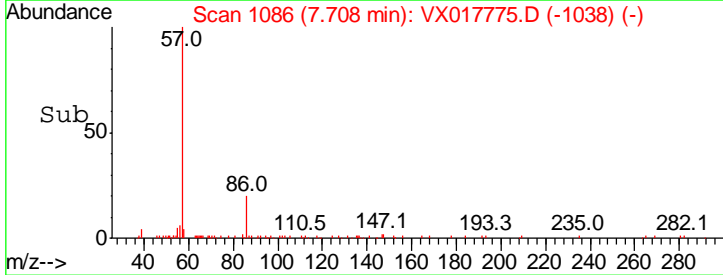
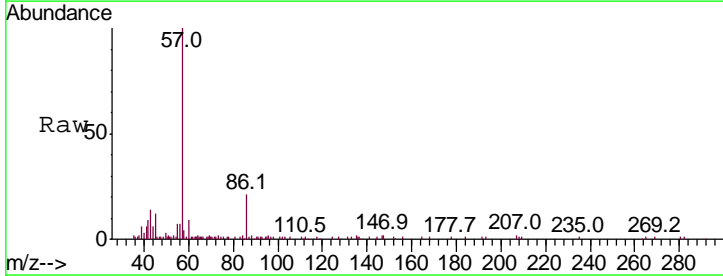
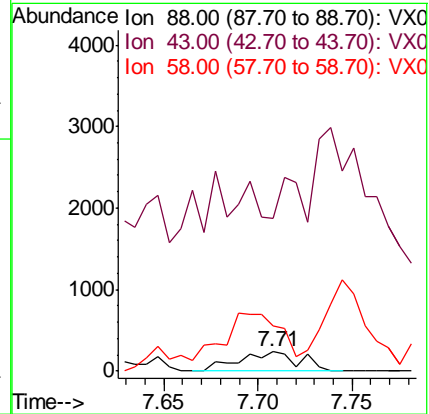
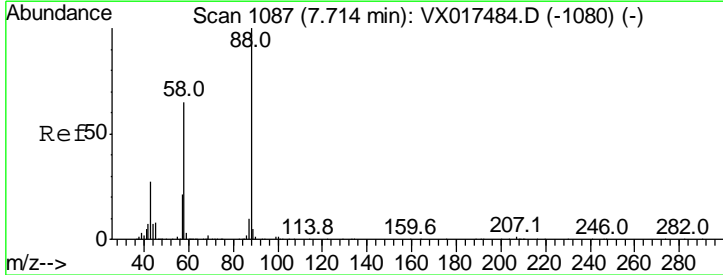
Instrument : MSVOA_X
 ClientSampled : PB130720ZHE#16

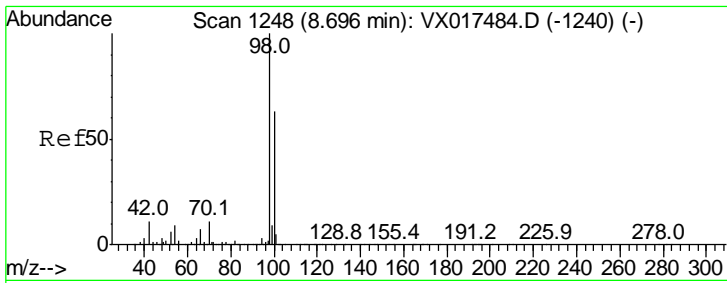
Tgt Ion	Resp	Lower	Upper
41	100		
69	0.3	63.1	94.7#
39	52.0	45.1	67.7



#49
 1,4-Dioxane
 Concen: 3.601 ug/l
 RT: 7.71 min Scan# 1086
 Delta R.T. -0.01 min
 Lab File: VX017775.D
 Acq: 04 Aug 2020 17:19

Tgt Ion	Resp	Lower	Upper
88	100		
43	0.0	27.8	41.6#
58	300.6	58.3	87.5#

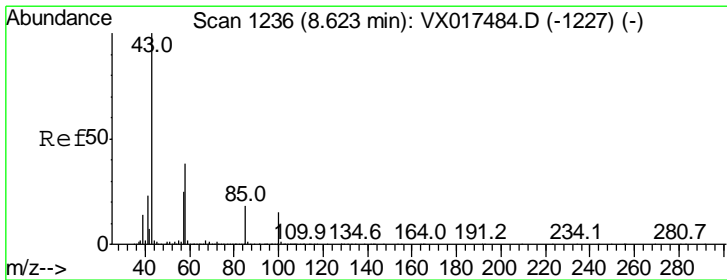
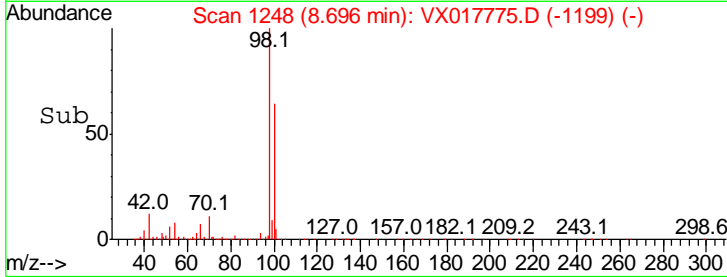
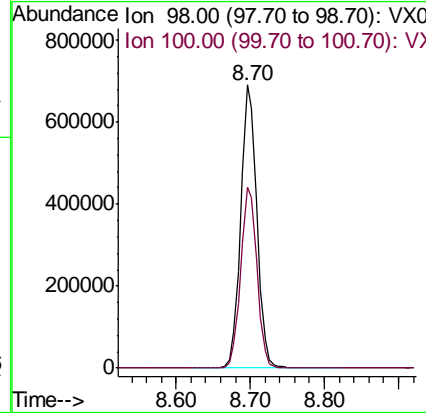
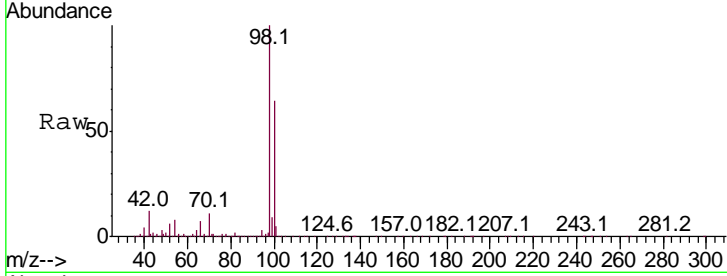




#50
 Toluene-d8
 Concen: 48.810 ug/l
 RT: 8.70 min Scan# 1248
 Delta R.T. 0.00 min
 Lab File: VX017775.D
 Acq: 04 Aug 2020 17:19

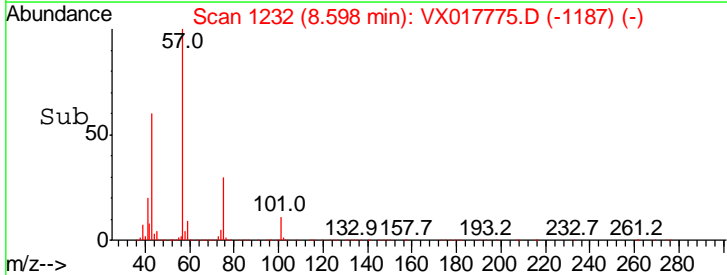
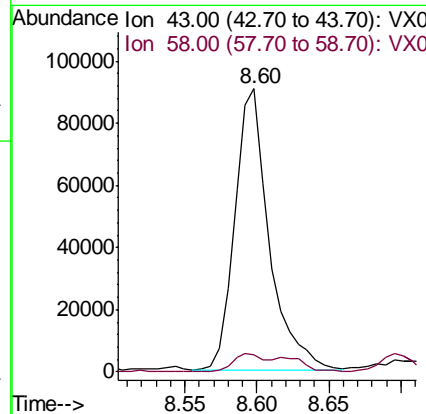
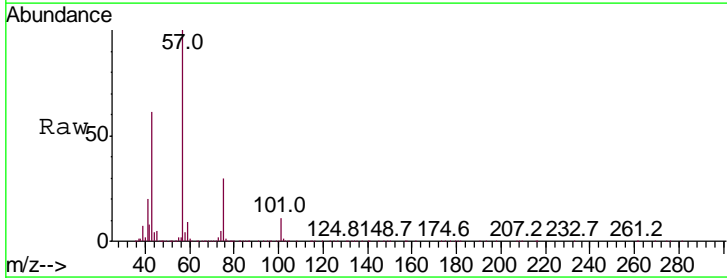
Instrument : MSVOA_X
 ClientSampleId : PB130720ZHE#16

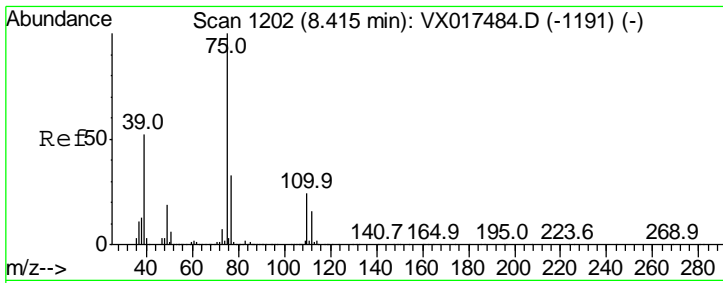
Tgt Ion	Resp	Lower	Upper
98	1049371		
100	64.5	52.3	78.5



#51
 4-Methyl-2-Pentanone
 Concen: 16.342 ug/l
 RT: 8.60 min Scan# 1232
 Delta R.T. -0.02 min
 Lab File: VX017775.D
 Acq: 04 Aug 2020 17:19

Tgt Ion	Resp	Lower	Upper
43	150433		
58	6.2	31.0	46.4#

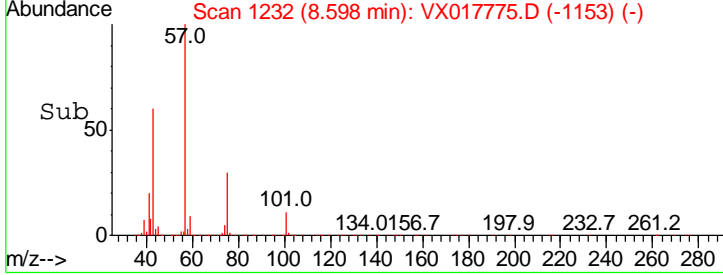
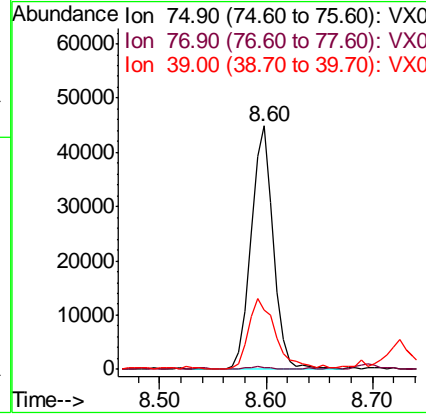
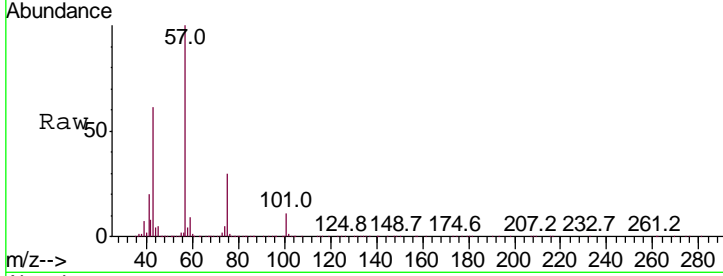




#54
 cis-1,3-Dichloropropene
 Concen: 5.964 ug/l
 RT: 8.60 min Scan# 1232
 Delta R.T. 0.18 min
 Lab File: VX017775.D
 Acq: 04 Aug 2020 17:19

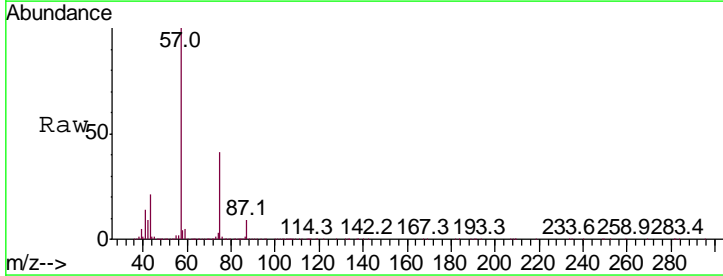
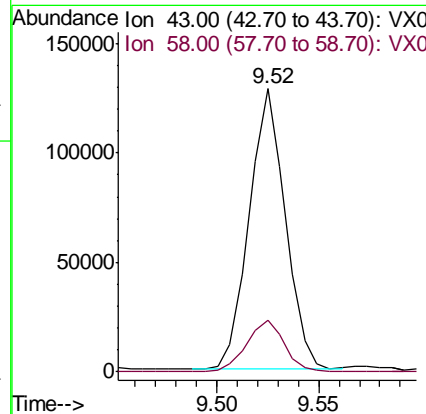
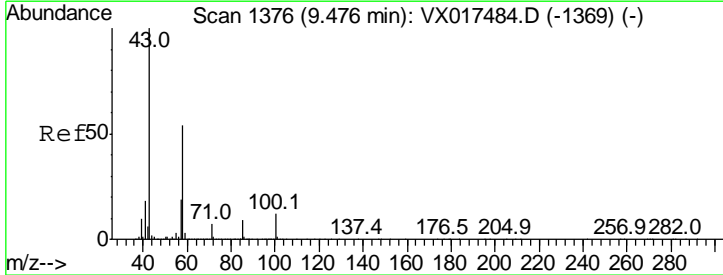
Instrument : MSVOA_X
 ClientSampleId : PB130720ZHE#16

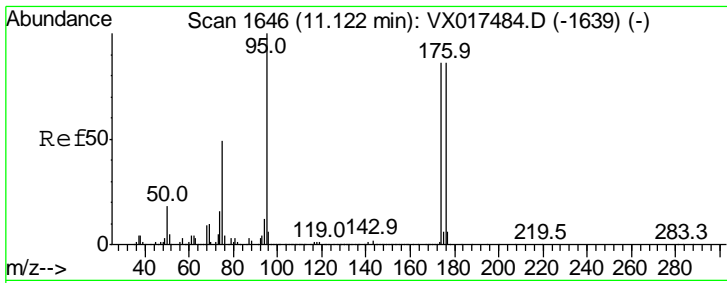
Tgt Ion	Resp	Lower	Upper
75	65770		
77	0.3	25.5	38.3#
39	23.9	41.8	62.8#



#59
 2-Hexanone
 Concen: 22.737 ug/l
 RT: 9.52 min Scan# 1384
 Delta R.T. 0.05 min
 Lab File: VX017775.D
 Acq: 04 Aug 2020 17:19

Tgt Ion	Resp	Lower	Upper
43	157582		
58	18.9	26.6	79.8#

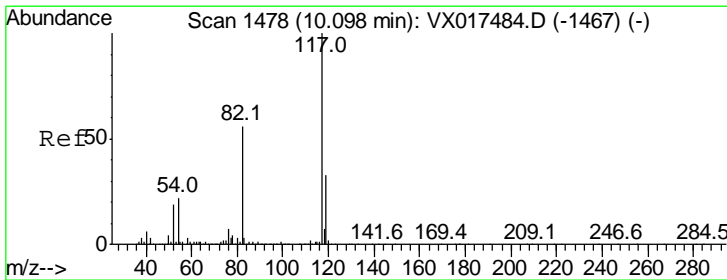
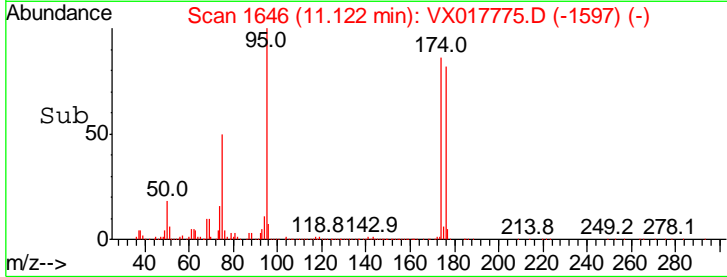
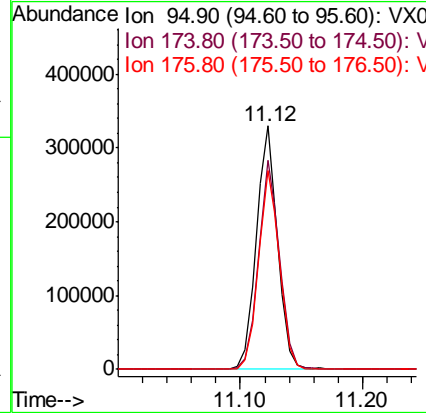
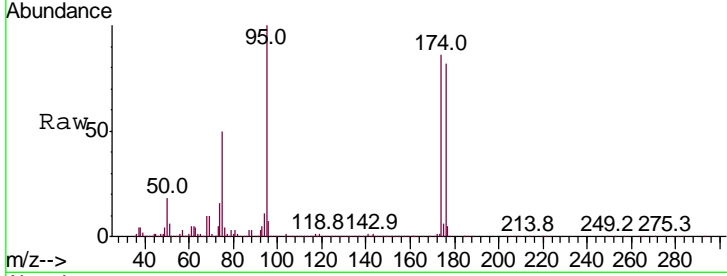




#62
 4-Bromofluorobenzene
 Concen: 46.251 ug/l
 RT: 11.12 min Scan# 1646
 Delta R.T. 0.00 min
 Lab File: VX017775.D
 Acq: 04 Aug 2020 17:19

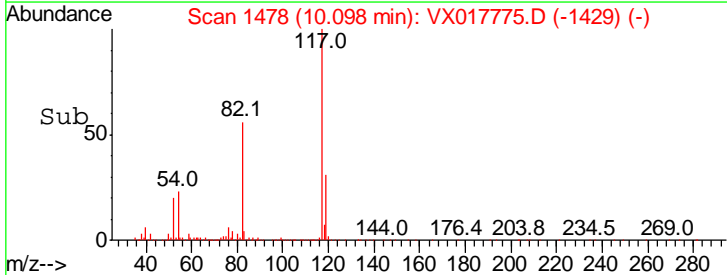
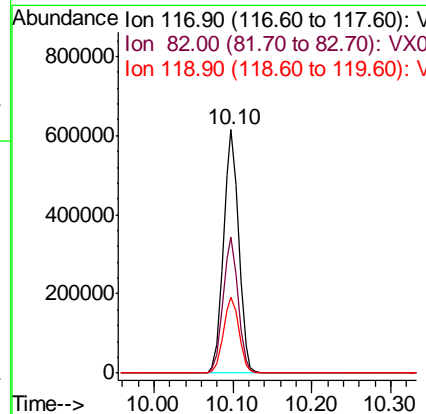
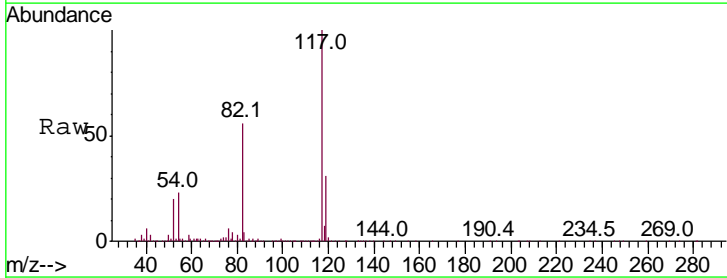
Instrument : MSVOA_X
 ClientSampled : PB130720ZHE#16

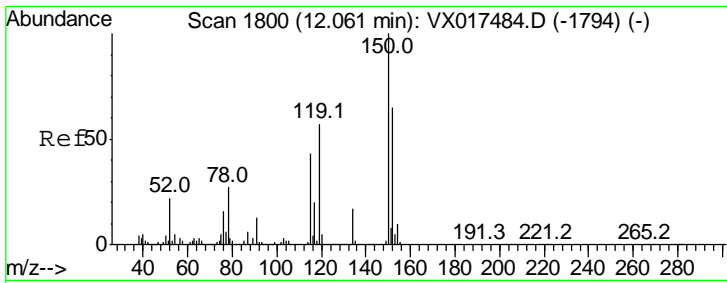
Tgt Ion	Resp	Lower	Upper
95	397942		
174	86.1	0.0	169.0
176	81.5	0.0	161.0



#63
 Chlorobenzene-d5
 Concen: 50.000 ug/l
 RT: 10.10 min Scan# 1478
 Delta R.T. 0.00 min
 Lab File: VX017775.D
 Acq: 04 Aug 2020 17:19

Tgt Ion	Resp	Lower	Upper
117	829038		
82	55.9	44.0	66.0
119	31.1	25.4	38.0

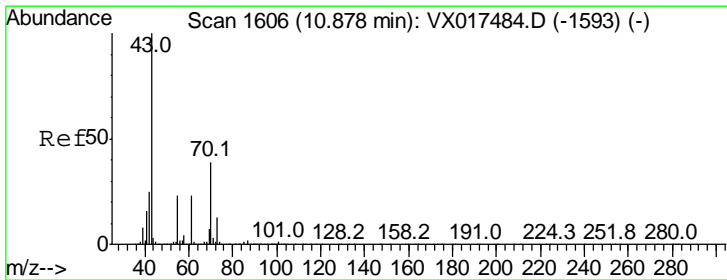
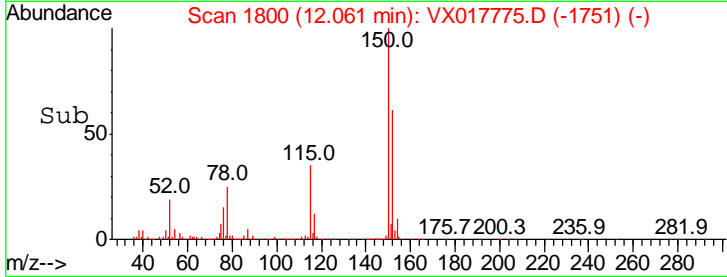
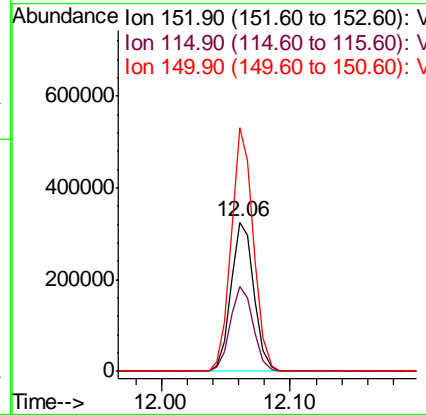
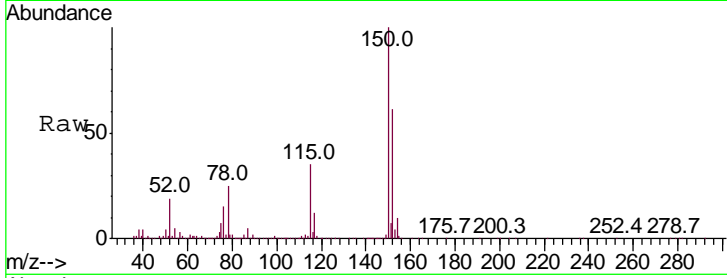




#72
 1,4-Dichlorobenzene-d4
 Concen: 50.000 ug/l
 RT: 12.06 min Scan# 1800
 Delta R.T. 0.00 min
 Lab File: VX017775.D
 Acq: 04 Aug 2020 17:19

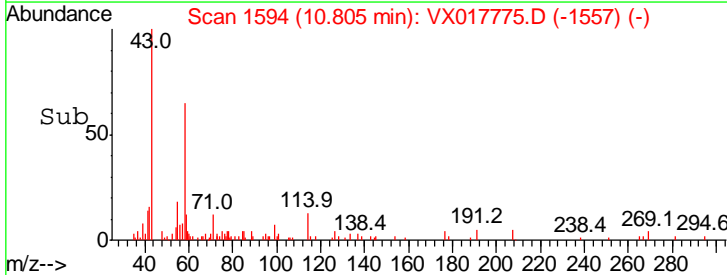
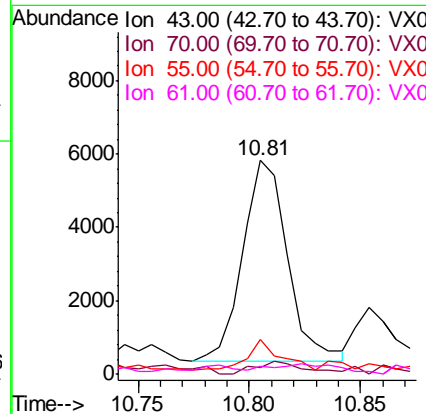
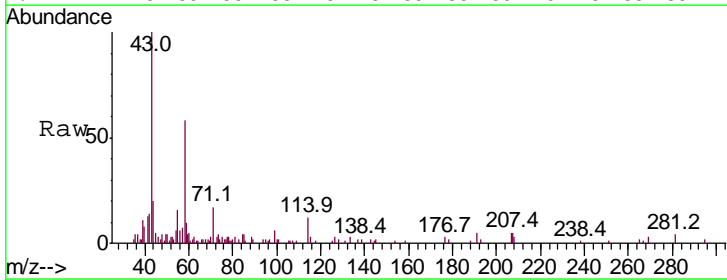
Instrument :
 MSVOA_X
 ClientSampled :
 PB130720ZHE#16

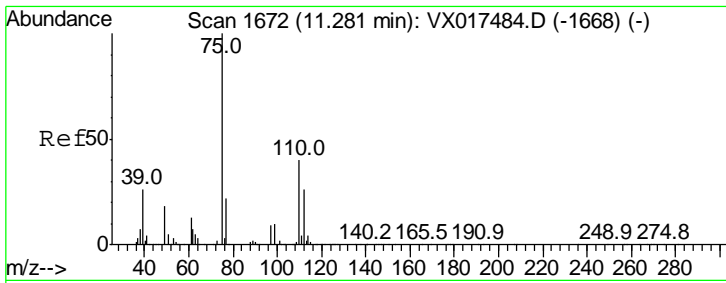
Tgt Ion	Resp	Lower	Upper
152	100		
115	56.8	65.5	196.6#
150	158.3	0.0	412.6



#74
 N-amyl acetate
 Concen: 0.624 ug/l
 RT: 10.81 min Scan# 1594
 Delta R.T. -0.07 min
 Lab File: VX017775.D
 Acq: 04 Aug 2020 17:19

Tgt Ion	Resp	Lower	Upper
43	100		
70	5.8	32.3	48.5#
55	12.0	18.4	27.6#
61	0.0	18.6	28.0#

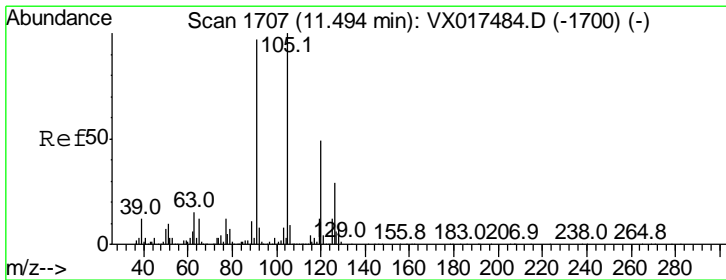
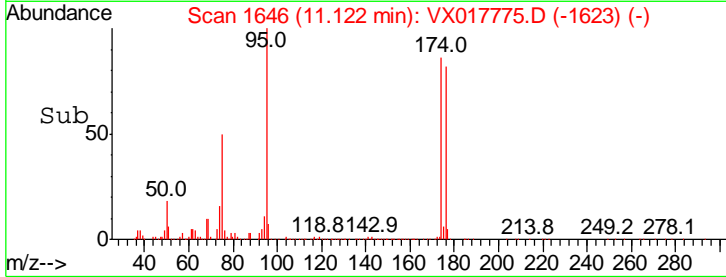
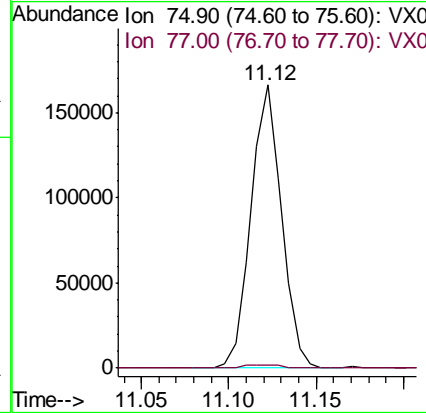
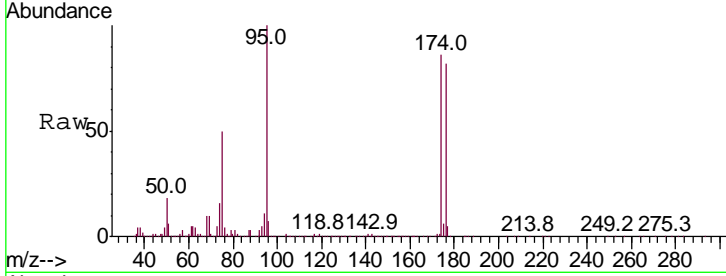




#76
 1,2,3-Trichloropropane
 Concen: 24.081 ug/l
 RT: 11.12 min Scan# 1646
 Delta R.T. -0.16 min
 Lab File: VX017775.D
 Acq: 04 Aug 2020 17:19

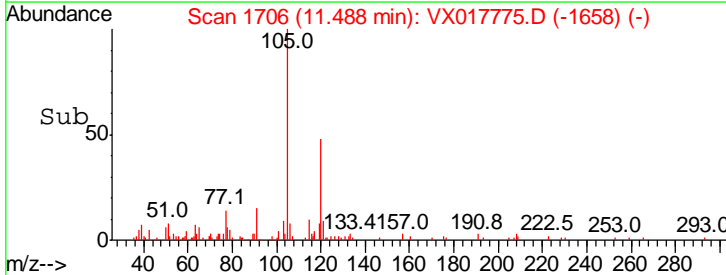
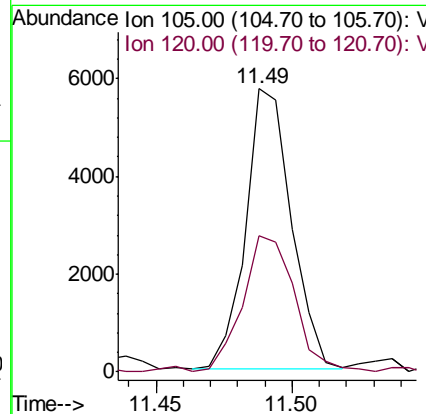
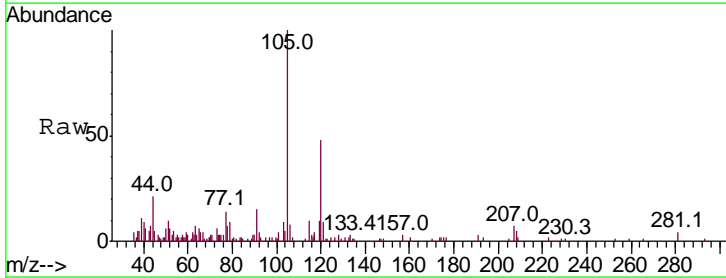
Instrument :
 MSVOA_X
 ClientSampled :
 PB130720ZHE#16

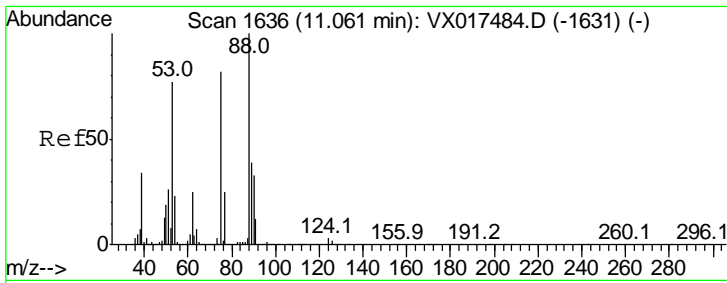
Tgt Ion: 75 Resp: 202160
 Ion Ratio Lower Upper
 75 100
 77 1.5 21.8 65.3#



#80
 1,3,5-Trimethylbenzene
 Concen: 0.278 ug/l
 RT: 11.49 min Scan# 1706
 Delta R.T. -0.01 min
 Lab File: VX017775.D
 Acq: 04 Aug 2020 17:19

Tgt Ion: 105 Resp: 6648
 Ion Ratio Lower Upper
 105 100
 120 56.0 24.1 72.3

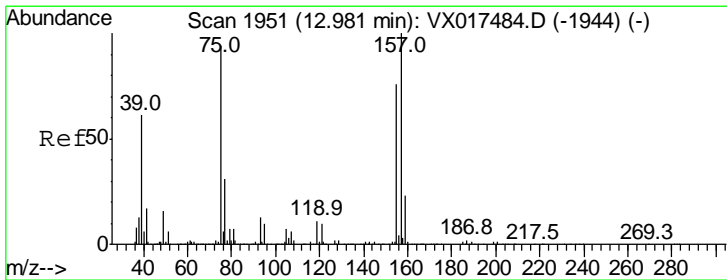
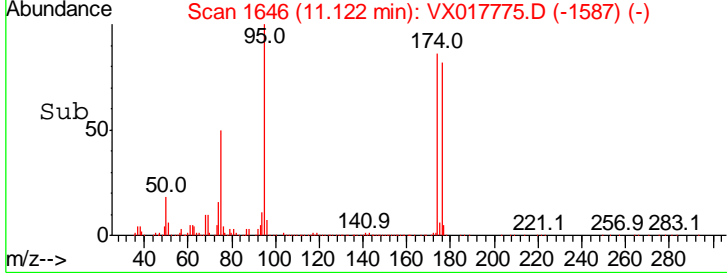
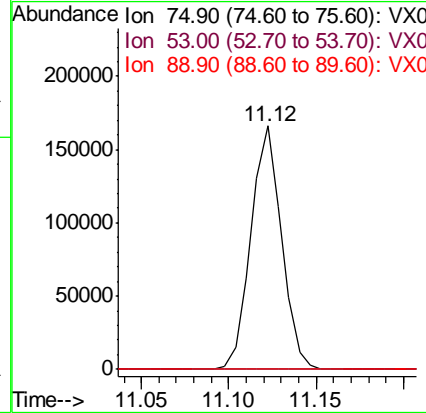
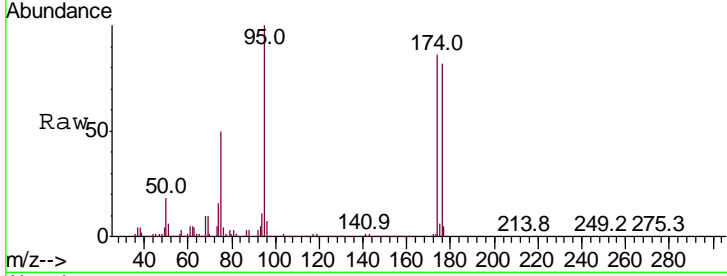




#81
 trans-1,4-Dichloro-2-butene
 Concen: 60.680 ug/l
 RT: 11.12 min Scan# 1646
 Delta R.T. 0.06 min
 Lab File: VX017775.D
 Acq: 04 Aug 2020 17:19

Instrument : MSVOA_X
 ClientSampled : PB130720ZHE#16

Tgt Ion	Ratio	Lower	Upper
75	100		
53	0.3	75.9	113.9#
89	0.1	37.8	56.6#



#92
 1,2-Dibromo-3-Chloropropane
 Concen: 2.655 ug/l
 RT: 12.97 min Scan# 1949
 Delta R.T. -0.01 min
 Lab File: VX017775.D
 Acq: 04 Aug 2020 17:19

Tgt Ion	Ratio	Lower	Upper
75	100		
155	26.6	42.3	126.8#
157	0.0	54.3	162.9#

