

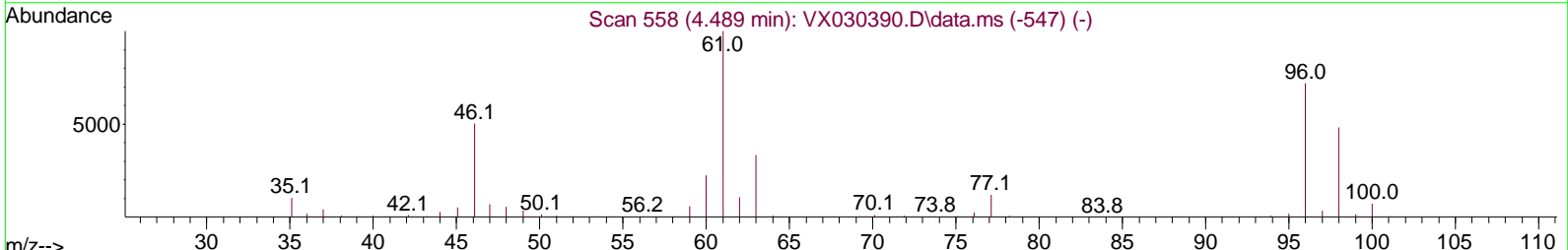
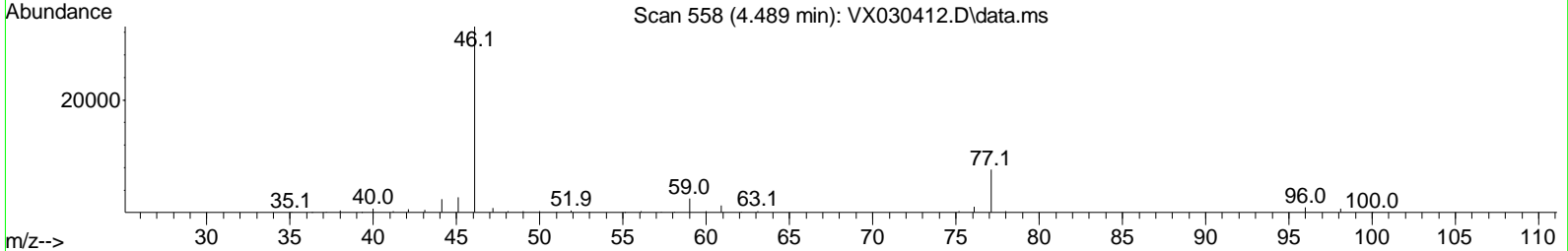
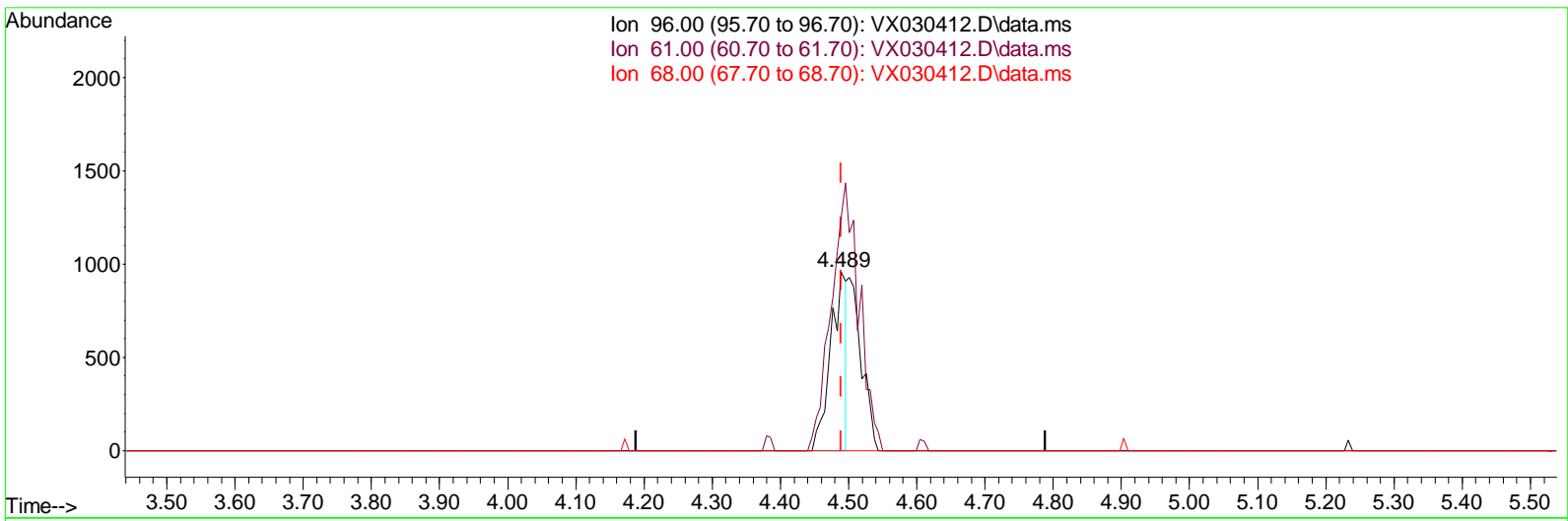
Data Path : Z:\voasrv\HPCHEM1\MSVOA_X\Data\VX080422\
 Data File : VX030412.D
 Acq On : 04 Aug 2022 23:17
 Operator : JC/MD
 Sample : N4021-03
 Mi sc : 5.0mL/MSVOA_X/WATER
 ALS Vial : 32 Sample Multiplier: 1

Instrument :
 MSVOA_X
ClientSampleId :
 F5E18

Manual Integrations APPROVED

Reviewed By : John Carlone 08/05/2022
 Supervised By : Mahesh Dadoda 08/05/2022

Quant Time: Aug 05 05:30:52 2022
 Quant Method : Z:\voasrv\HPCHEM1\MSVOA_X\Method\SFAMXLM080422WMA.M
 Quant Title : VOC Analysis
 QLast Update : Fri Aug 05 05:25:14 2022
 Response via : Initial Calibration



TIC: VX030412.D\data.ms

(20) cis-1,2-Dichloroethene (T)

4.489min (+ 0.000) 0.78 ug/L

response	1535	
Ion	Exp%	Act%
96.00	100.00	100.00
61.00	134.30	129.96
68.00	0.00	0.00
0.00	0.00	0.00

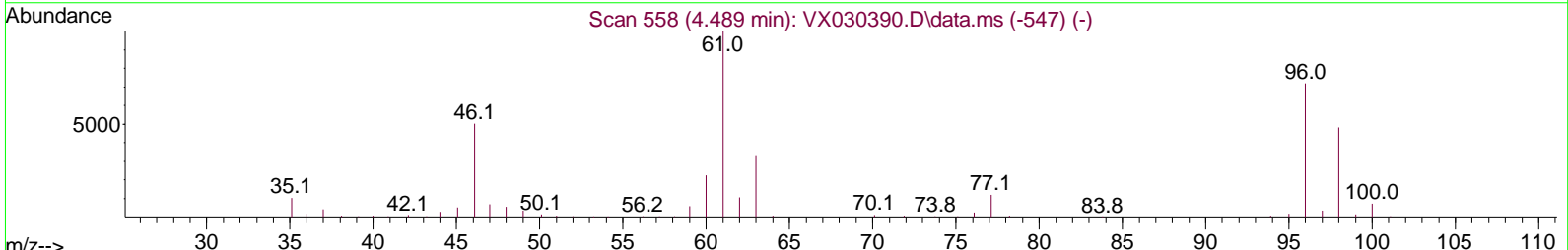
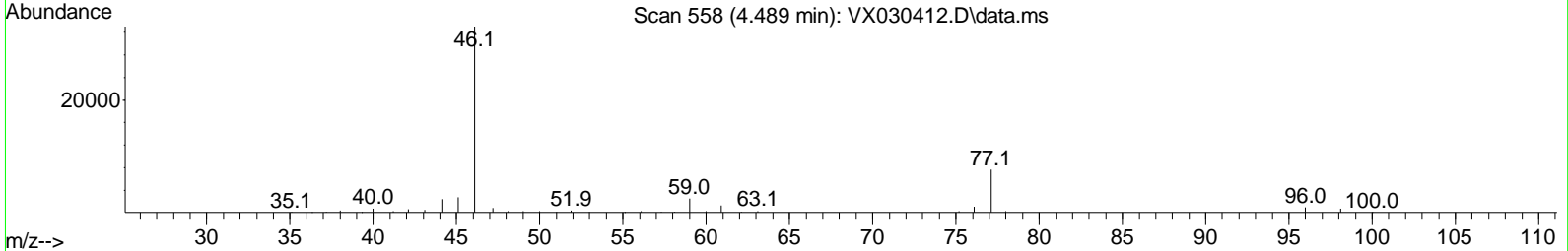
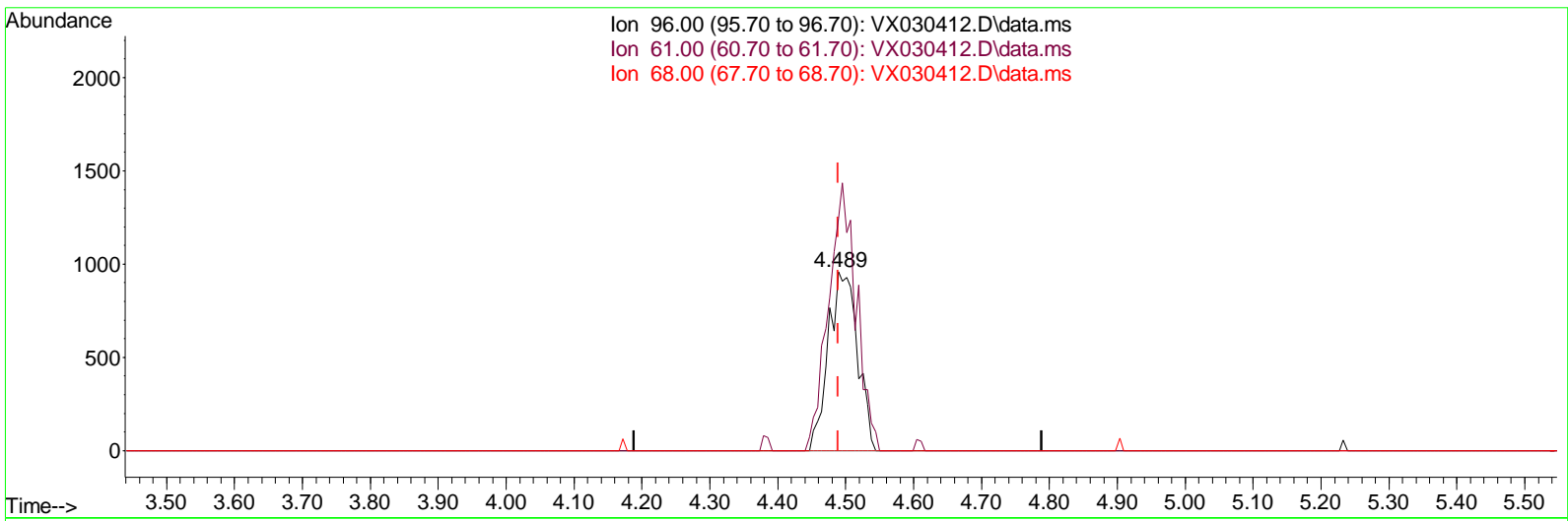
Data Path : Z:\voasrv\HPCHEM1\MSVOA_X\Data\VX080422\
 Data File : VX030412.D
 Acq On : 04 Aug 2022 23:17
 Operator : JC/MD
 Sample : N4021-03
 Mi sc : 5.0mL/MSVOA_X/WATER
 ALS Vial : 32 Sample Multiplier: 1

Instrument :
 MSVOA_X
ClientSampleId :
 F5E18

Manual Integrations APPROVED

Reviewed By : John Carlone 08/05/2022
 Supervised By : Mahesh Dadoda 08/05/2022

Quant Time: Aug 05 05:30:52 2022
 Quant Method : Z:\voasrv\HPCHEM1\MSVOA_X\Method\SFAMXLM080422WMA.M
 Quant Title : VOC Analysis
 QLast Update : Fri Aug 05 05:25:14 2022
 Response via : Initial Calibration



TIC: VX030412.D\data.ms

(20) cis-1,2-Dichloroethene (T)

4.489min (+ 0.000) 1.45 ug/L m

response	2854	
Ion	Exp%	Act%
96.00	100.00	100.00
61.00	134.30	129.96
68.00	0.00	0.00
0.00	0.00	0.00

Data Path : Z:\voasrv\HPCHEM1\MSVOA_X\Data\WX080422\
 Data File : VX030412.D
 Acq On : 04 Aug 2022 23:17
 Operator : JC/MD
 Sample : N4021-03
 Misc : 5.0mL/MSVOA_X/WATER
 ALS Vial : 32 Sample Multiplier: 1

Instrument :
 MSVOA_X
ClientSampleId :
 F5E18

Manual Integrations APPROVED

Reviewed By : John Carlone 08/05/2022
 Supervised By : Mahesh Dadoda 08/05/2022

Quant Time: Aug 05 05:30:52 2022
 Quant Method : Z:\voasrv\HPCHEM1\MSVOA_X\Method\SFAMXLM080422WMA.M
 Quant Title : VOC Analysis
 QLast Update : Fri Aug 05 05:25:14 2022
 Response via : Initial Calibration

Compound	R.T.	QI on	Response	Conc	Units	Dev(Min)
Internal Standards						
1) 1,4-Difluorobenzene	6.769	114	269486	50.000	ug/L	0.00
28) Chlorobenzene-d5	10.055	117	239683	50.000	ug/L	0.00
58) 1,4-Dichlorobenzene-d4	12.024	152	105314	50.000	ug/L	0.00
System Monitoring Compounds						
4) Vinyl Chloride-d3	1.368	65	98381	56.848	ug/L	0.00
Spike Amount 50.000	Range 60 - 135		Recovery = 113.700%			
7) Chloroethane-d5	1.666	69	76093	62.372	ug/L	0.00
Spike Amount 50.000	Range 70 - 130		Recovery = 124.740%			
11) 1,1-Dichloroethene-d2	2.307	63	142056	43.395	ug/L	0.00
Spike Amount 50.000	Range 60 - 125		Recovery = 86.780%			
21) 2-Butanone-d5	4.465	46	187228	116.763	ug/L	0.00
Spike Amount 100.000	Range 40 - 130		Recovery = 116.760%			
24) Chloroform-d	5.068	84	199207	55.918	ug/L	0.00
Spike Amount 50.000	Range 70 - 125		Recovery = 111.840%			
26) 1,2-Dichloroethane-d4	5.964	65	139668	57.739	ug/L	0.00
Spike Amount 50.000	Range 70 - 125		Recovery = 115.480%			
32) Benzene-d6	5.977	84	399916	58.249	ug/L	0.00
Spike Amount 50.000	Range 70 - 125		Recovery = 116.500%			
36) 1,2-Dichloropropane-d6	7.312	67	130573	58.618	ug/L	0.00
Spike Amount 50.000	Range 70 - 120		Recovery = 117.240%			
41) Toluene-d8	8.653	98	359043	55.480	ug/L	0.00
Spike Amount 50.000	Range 80 - 120		Recovery = 110.960%			
43) trans-1,3-Dichloroprop...	8.952	79	55919	50.462	ug/L	0.00
Spike Amount 50.000	Range 60 - 125		Recovery = 100.920%			
47) 2-Hexanone-d5	9.384	63	131467	115.788	ug/L	0.00
Spike Amount 100.000	Range 45 - 130		Recovery = 115.790%			
56) 1,1,2,2-Tetrachloroeth...	11.195	84	167188	57.134	ug/L	0.00
Spike Amount 50.000	Range 65 - 120		Recovery = 114.260%			
66) 1,2-Dichlorobenzene-d4	12.323	152	122927	60.179	ug/L	0.00
Spike Amount 50.000	Range 80 - 120		Recovery = 120.360%#			
Target Compounds						
5) Vinyl chloride	1.374	62	2249	1.208	ug/L #	64
17) trans-1,2-Dichloroethene	3.093	96	27834	15.928	ug/L	96
20) cis-1,2-Dichloroethene	4.489	96	2854m	1.452	ug/L	

(#) = qualifier out of range (m) = manual integration (+) = signals summed

Data Path : Z:\voasrv\HPCHEM1\MSVOA_X\Data\VX080422\
 Data File : VX030412.D
 Acq On : 04 Aug 2022 23: 17
 Operator : JC/MD
 Sample : N4021-03
 Mi sc : 5. 0mL/MSVOA_X/WATER
 ALS Vial : 32 Sample Multi plier: 1

Instrument :
 MSVOA_X
ClientSampleId :
 F5E18

Manual IntegrationsAPPROVED

Reviewed By :John Carlone 08/05/2022
 Supervised By :Mahesh Dadoda 08/05/2022

Quant Time: Aug 05 05: 30: 52 2022
 Quant Method : Z:\voasrv\HPCHEM1\MSVOA_X\Method\SFAMXLM080422WMA. M
 Quant Ti tle : VOC Analysi s
 QLast Update : Fri Aug 05 05: 25: 14 2022
 Response via : Ini tial Calibrati on

