

Data Path : Z:\voasrv\HPCHEM1\MSVOA_X\Data\VX080423\
 Data File : VX036818.D
 Acq On : 04 Aug 2023 18:19
 Operator : JC/MD
 Sample : 03877-08
 Misc : 5.0mL/MSVOA_X/WATER
 ALS Vial : 22 Sample Multiplier: 1

Instrument :
 MSVOA_X
 ClientSampleId :
 COMP-3

Quant Time: Aug 04 23:09:21 2023
 Quant Method : Z:\voasrv\HPCHEM1\MSVOA_X\Method\82X072123W.M
 Quant Title : SW846 8260
 QLast Update : Fri Jul 21 12:14:12 2023
 Response via : Initial Calibration

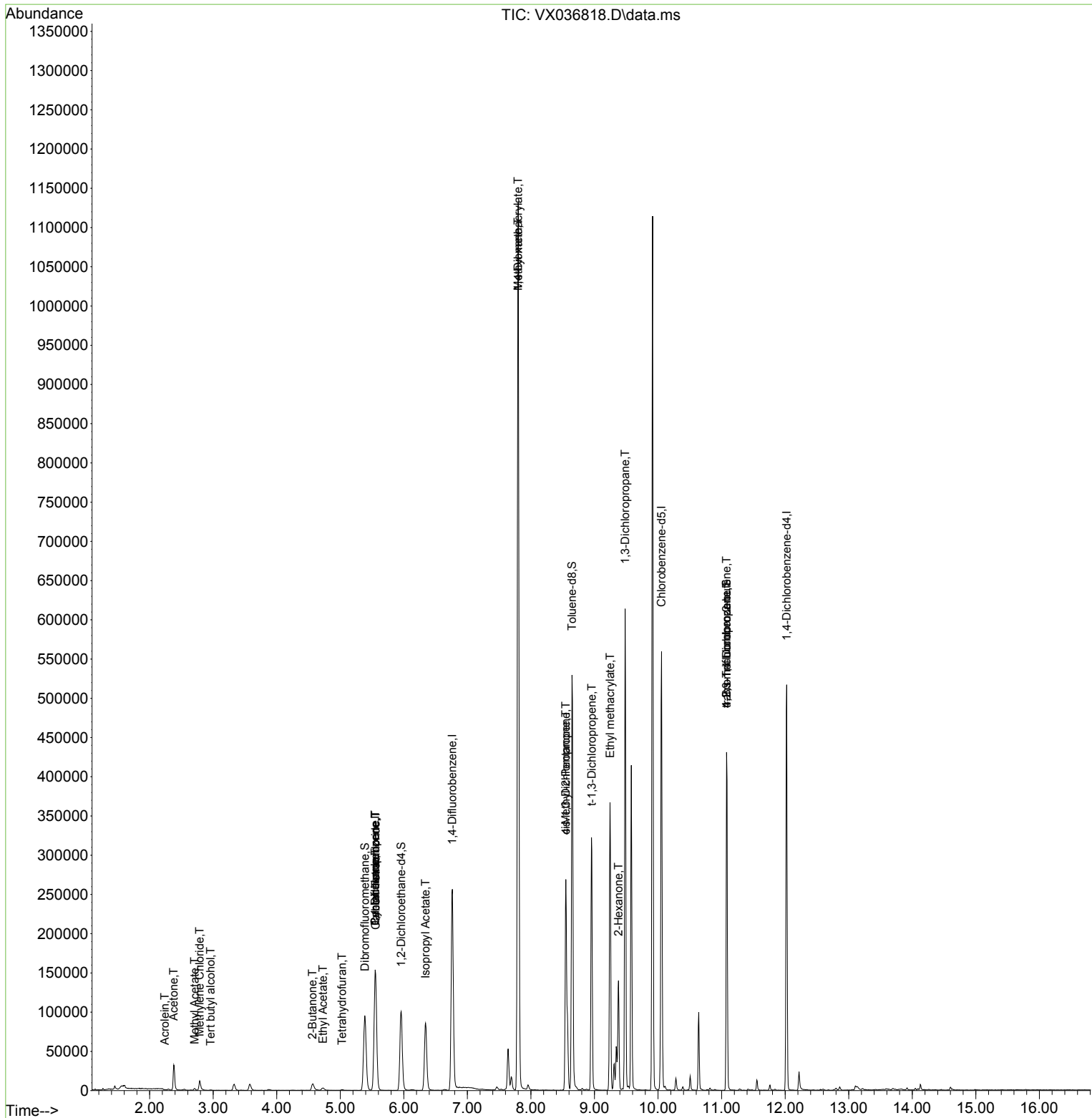
| Compound | R.T. | QIon | Response | Conc | Units | Dev(Min) |
|-------------------------------|--------|----------------|------------|---------|--------|----------|
| ----- | | | | | | |
| Internal Standards | | | | | | |
| 1) Pentafluorobenzene | 5.549 | 168 | 142024 | 50.000 | ug/l | 0.00 |
| 34) 1,4-Difluorobenzene | 6.763 | 114 | 261805 | 50.000 | ug/l | 0.00 |
| 63) Chlorobenzene-d5 | 10.055 | 117 | 241145 | 50.000 | ug/l | 0.00 |
| 72) 1,4-Dichlorobenzene-d4 | 12.024 | 152 | 103777 | 50.000 | ug/l | 0.00 |
| System Monitoring Compounds | | | | | | |
| 33) 1,2-Dichloroethane-d4 | 5.958 | 65 | 99301 | 47.253 | ug/l | 0.00 |
| Spiked Amount | 50.000 | Range 78 - 117 | Recovery = | 94.500% | | |
| 35) Dibromofluoromethane | 5.385 | 113 | 83984 | 46.671 | ug/l | 0.00 |
| Spiked Amount | 50.000 | Range 75 - 124 | Recovery = | 93.340% | | |
| 50) Toluene-d8 | 8.646 | 98 | 315082 | 49.375 | ug/l | 0.00 |
| Spiked Amount | 50.000 | Range 92 - 112 | Recovery = | 98.740% | | |
| 62) 4-Bromofluorobenzene | 11.079 | 95 | 117633 | 48.859 | ug/l | 0.00 |
| Spiked Amount | 50.000 | Range 83 - 123 | Recovery = | 97.720% | | |
| Target Compounds | | | | | | |
| | | | | | | Qvalue |
| 11) Tert butyl alcohol | 2.958 | 59 | 511 | 1.027 | ug/l # | 78 |
| 13) Acrolein | 2.239 | 56 | 118 | 0.416 | ug/l # | 78 |
| 16) Acetone | 2.379 | 43 | 34860 | 39.976 | ug/l | 91 |
| 18) Methyl Acetate | 2.708 | 43 | 3241 | 0.883 | ug/l | 98 |
| 20) Methylene Chloride | 2.788 | 84 | 6185 | 3.189 | ug/l | 91 |
| 25) 2-Butanone | 4.562 | 43 | 15487 | 10.946 | ug/l | 90 |
| 29) Tetrahydrofuran | 5.025 | 42 | 705 | 0.773 | ug/l # | 76 |
| 31) Cyclohexane | 5.549 | 56 | 3212 | 1.104 | ug/l # | 1 |
| 36) 1,1-Dichloropropene | 5.549 | 75 | 11763 | 4.386 | ug/l # | 51 |
| 37) Ethyl Acetate | 4.726 | 43 | 5186 | 1.708 | ug/l | 97 |
| 38) Carbon Tetrachloride | 5.555 | 117 | 14977 | 5.252 | ug/l # | 15 |
| 43) Isopropyl Acetate | 6.342 | 43 | 120530 | 23.065 | ug/l | 96 |
| 48) Methyl methacrylate | 7.799 | 41 | 95704 | 39.380 | ug/l # | 49 |
| 49) 1,4-Dioxane | 7.799 | 88 | 138 | 2.811 | ug/l # | 1 |
| 51) 4-Methyl-2-Pentanone | 8.549 | 43 | 132272 | 45.739 | ug/l # | 37 |
| 53) t-1,3-Dichloropropene | 8.957 | 75 | 696 | 0.206 | ug/l # | 43 |
| 54) cis-1,3-Dichloropropene | 8.549 | 75 | 44074 | 12.347 | ug/l # | 54 |
| 56) Ethyl methacrylate | 9.244 | 69 | 757 | 0.226 | ug/l # | 1 |
| 57) 1,3-Dichloropropane | 9.482 | 76 | 5469 | 1.598 | ug/l # | 42 |
| 59) 2-Hexanone | 9.378 | 43 | 102500 | 47.758 | ug/l # | 26 |
| 76) 1,2,3-Trichloropropane | 11.079 | 75 | 61010 | 24.994 | ug/l # | 39 |
| 81) trans-1,4-Dichloro-2-b... | 11.079 | 75 | 61010 | 56.651 | ug/l # | 5 |

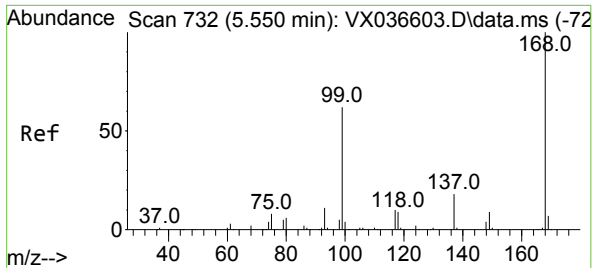
(#) = qualifier out of range (m) = manual integration (+) = signals summed

Data Path : Z:\voasrv\HPCHEM1\MSVOA_X\Data\VX080423\
 Data File : VX036818.D
 Acq On : 04 Aug 2023 18:19
 Operator : JC/MD
 Sample : 03877-08
 Misc : 5.0mL/MSVOA_X/WATER
 ALS Vial : 22 Sample Multiplier: 1

Instrument :
 MSVOA_X
 ClientSampleId :
 COMP-3

Quant Time: Aug 04 23:09:21 2023
 Quant Method : Z:\voasrv\HPCHEM1\MSVOA_X\Method\82X072123W.M
 Quant Title : SW846 8260
 QLast Update : Fri Jul 21 12:14:12 2023
 Response via : Initial Calibration

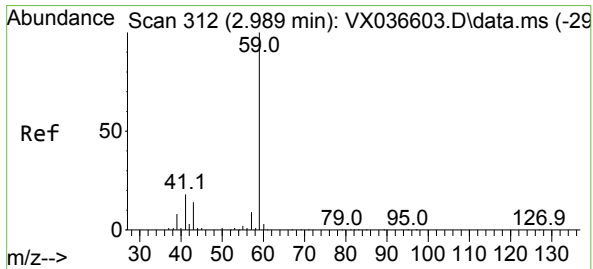
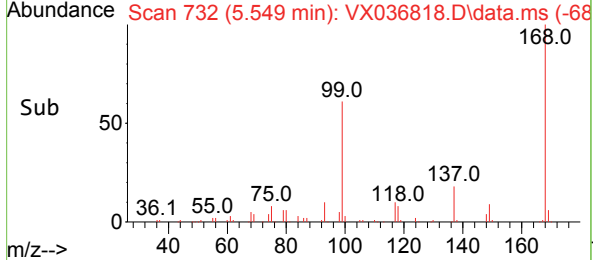
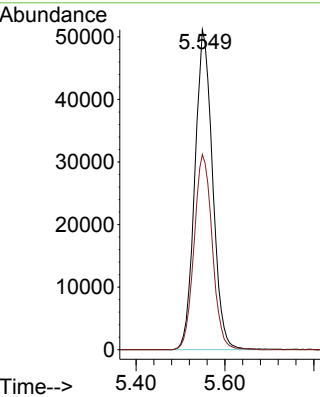
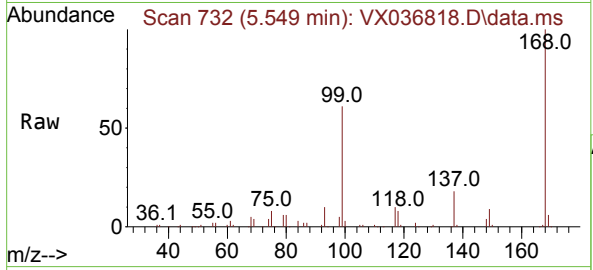




#1
 Pentafluorobenzene
 Concen: 50.000 ug/l
 RT: 5.549 min Scan# 71
 Delta R.T. -0.001 min
 Lab File: VX036818.D
 Acq: 04 Aug 2023 18:19

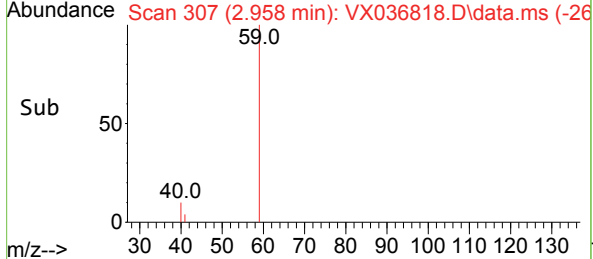
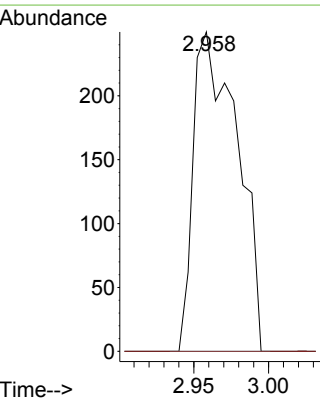
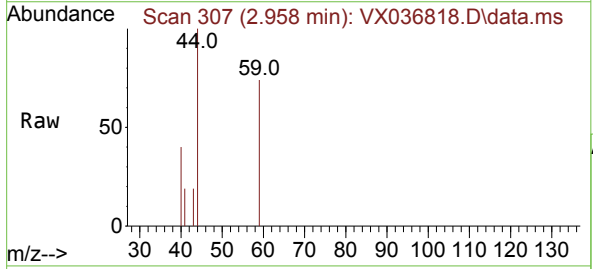
Instrument : MSVOA_X
 ClientSampleId :
 COMP-3

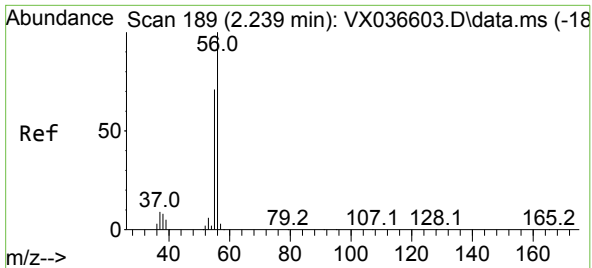
Tgt Ion:168 Resp: 142024
 Ion Ratio Lower Upper
 168 100
 99 61.0 56.6 85.0



#11
 Tert butyl alcohol
 Concen: 1.027 ug/l
 RT: 2.958 min Scan# 307
 Delta R.T. -0.031 min
 Lab File: VX036818.D
 Acq: 04 Aug 2023 18:19

Tgt Ion: 59 Resp: 511
 Ion Ratio Lower Upper
 59 100
 57 0.0 6.0 9.0#

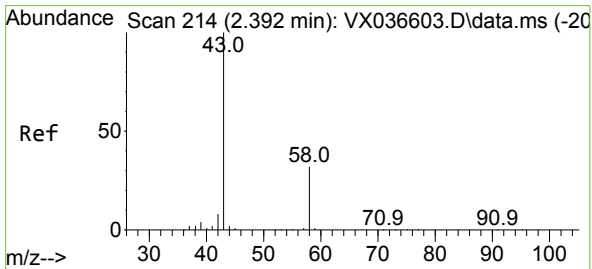
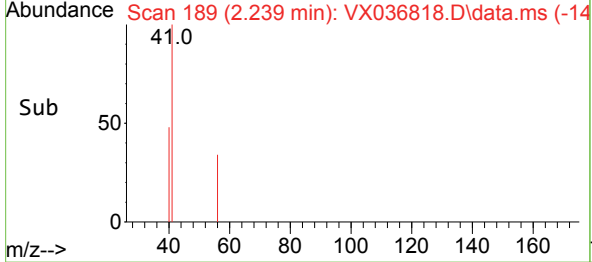
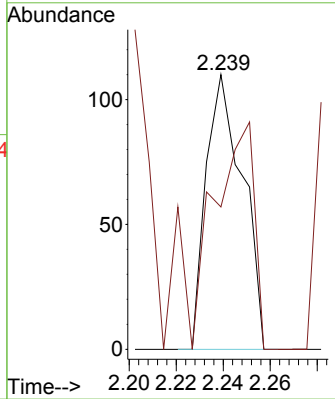
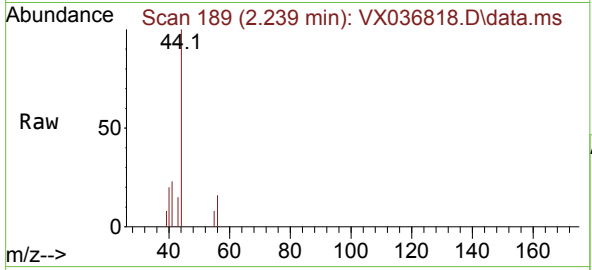




#13
 Acrolein
 Concen: 0.416 ug/l
 RT: 2.239 min Scan# 118
 Delta R.T. -0.000 min
 Lab File: VX036818.D
 Acq: 04 Aug 2023 18:19

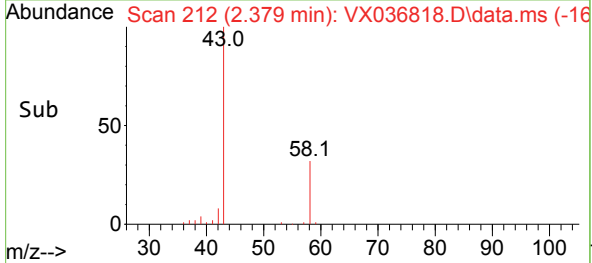
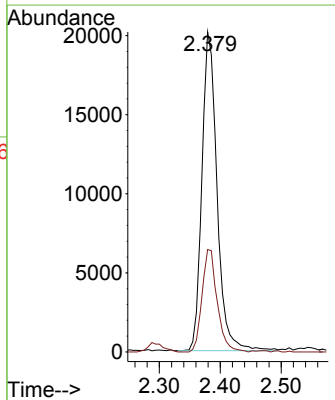
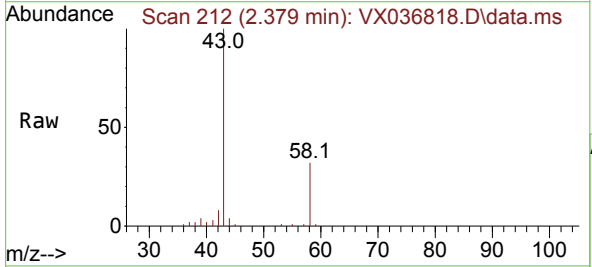
Instrument : MSVOA_X
 ClientSampleId :
 COMP-3

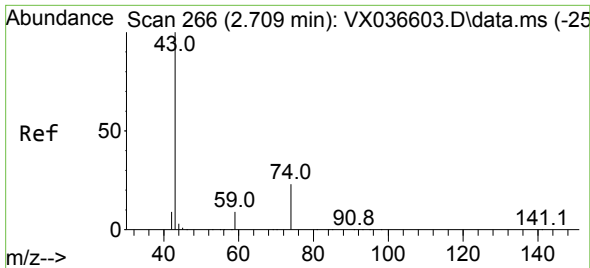
Tgt Ion: 56 Resp: 118
 Ion Ratio Lower Upper
 56 100
 55 89.8 57.1 85.7#



#16
 Acetone
 Concen: 39.976 ug/l
 RT: 2.379 min Scan# 212
 Delta R.T. -0.013 min
 Lab File: VX036818.D
 Acq: 04 Aug 2023 18:19

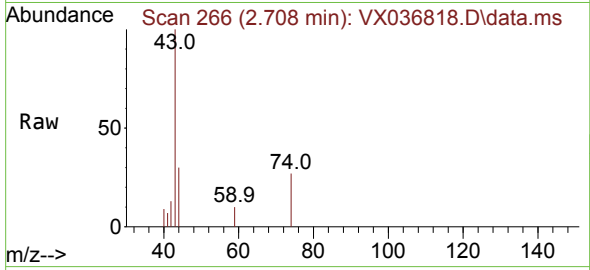
Tgt Ion: 43 Resp: 34860
 Ion Ratio Lower Upper
 43 100
 58 32.1 21.9 32.9



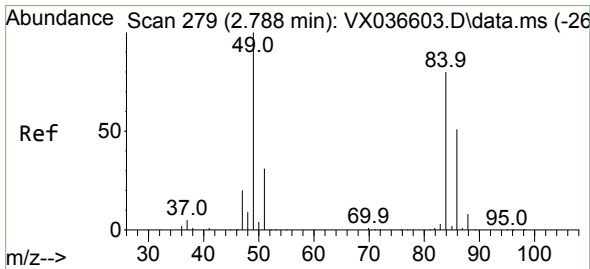
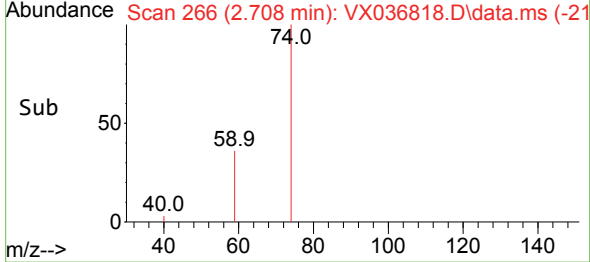
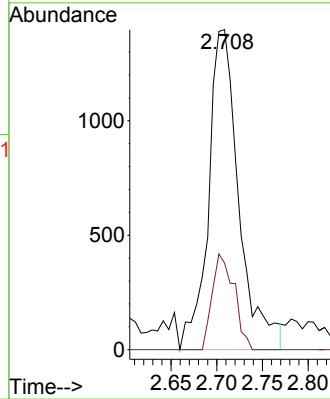


#18
 Methyl Acetate
 Concen: 0.883 ug/l
 RT: 2.708 min Scan# 266
 Delta R.T. -0.000 min
 Lab File: VX036818.D
 Acq: 04 Aug 2023 18:19

Instrument : MSVOA_X
 ClientSampleId :
 COMP-3

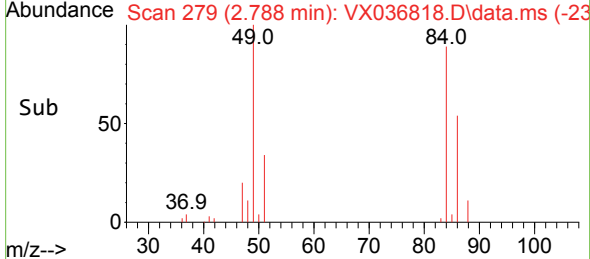
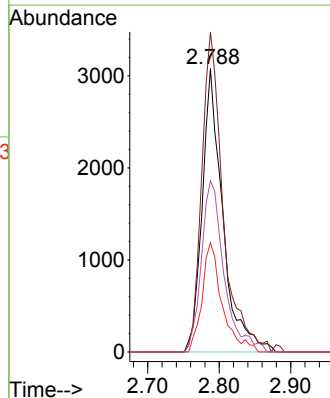
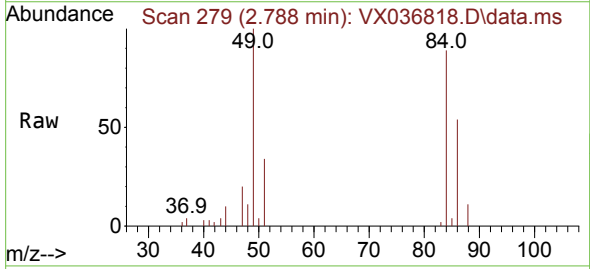


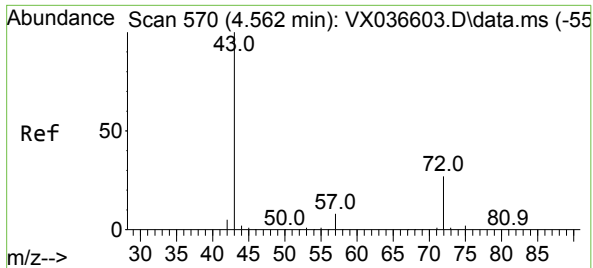
Tgt Ion: 43 Resp: 3241
 Ion Ratio Lower Upper
 43 100
 74 21.5 17.8 26.8



#20
 Methylene Chloride
 Concen: 3.189 ug/l
 RT: 2.788 min Scan# 279
 Delta R.T. -0.000 min
 Lab File: VX036818.D
 Acq: 04 Aug 2023 18:19

Tgt Ion: 84 Resp: 6185
 Ion Ratio Lower Upper
 84 100
 49 112.9 103.6 155.4
 51 38.6 33.8 50.6
 86 60.4 49.4 74.0

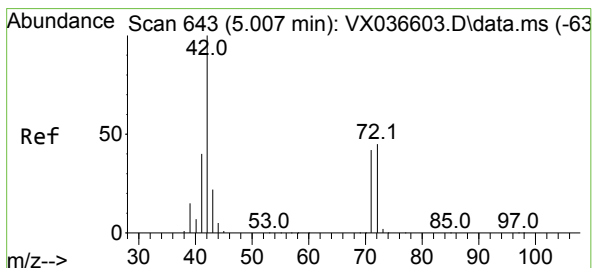
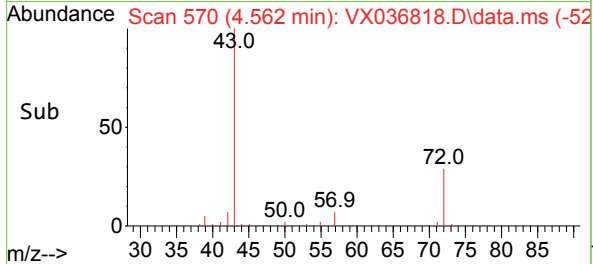
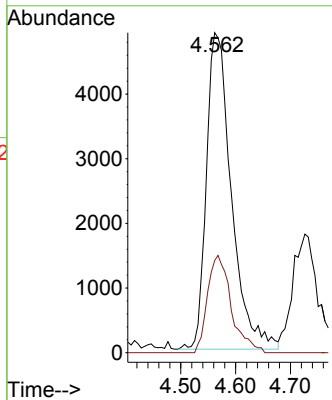
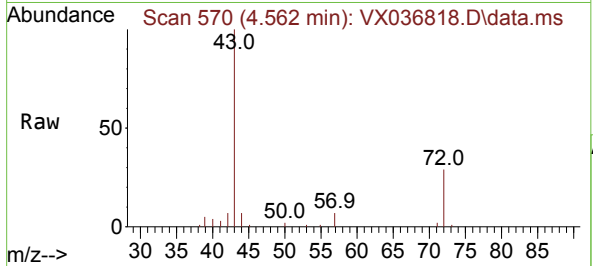




#25
 2-Butanone
 Concen: 10.946 ug/l
 RT: 4.562 min Scan# 51
 Delta R.T. -0.000 min
 Lab File: VX036818.D
 Acq: 04 Aug 2023 18:19

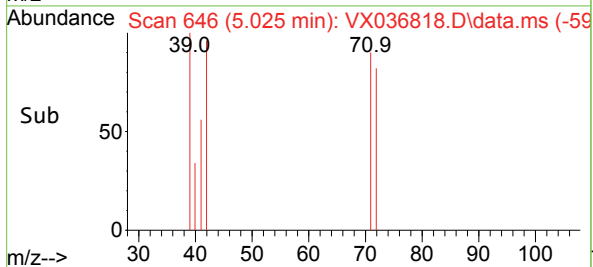
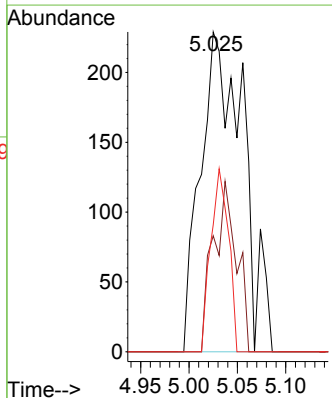
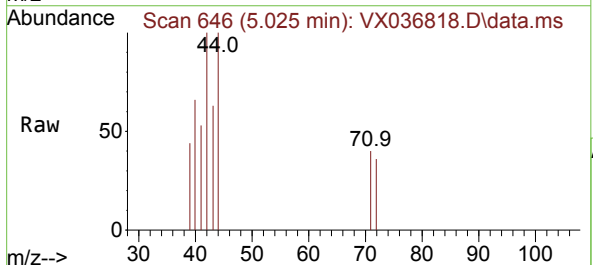
Instrument : MSVOA_X
 ClientSampleId : COMP-3

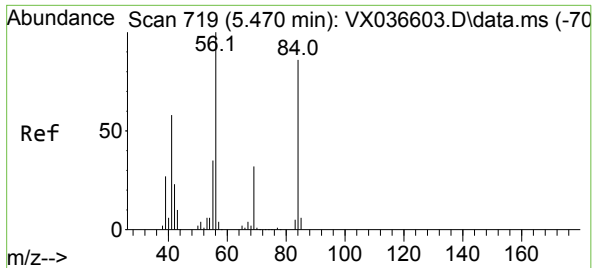
Tgt Ion: 43 Resp: 15487
 Ion Ratio Lower Upper
 43 100
 72 29.1 19.4 29.2



#29
 Tetrahydrofuran
 Concen: 0.773 ug/l
 RT: 5.025 min Scan# 646
 Delta R.T. 0.018 min
 Lab File: VX036818.D
 Acq: 04 Aug 2023 18:19

Tgt Ion: 42 Resp: 705
 Ion Ratio Lower Upper
 42 100
 72 29.1 34.2 51.4#
 71 23.8 32.2 48.2#

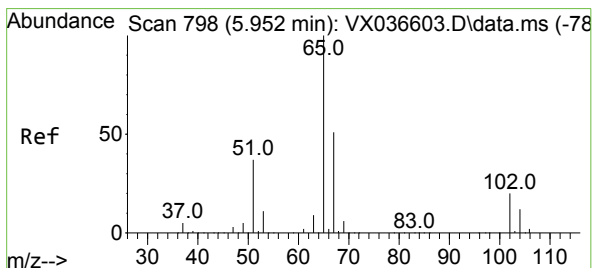
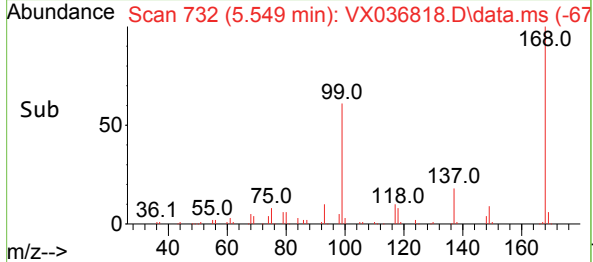
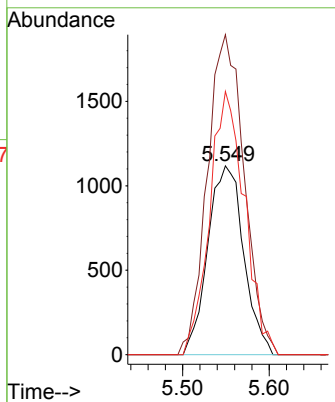
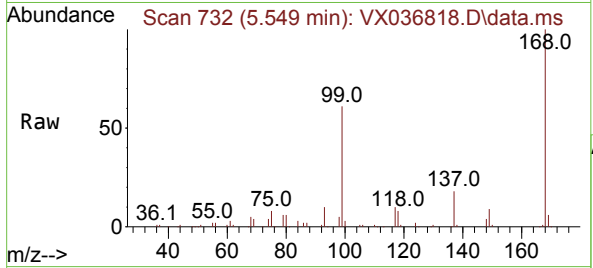




#31
 Cyclohexane
 Concen: 1.104 ug/l
 RT: 5.549 min Scan# 719
 Delta R.T. 0.079 min
 Lab File: VX036818.D
 Acq: 04 Aug 2023 18:19

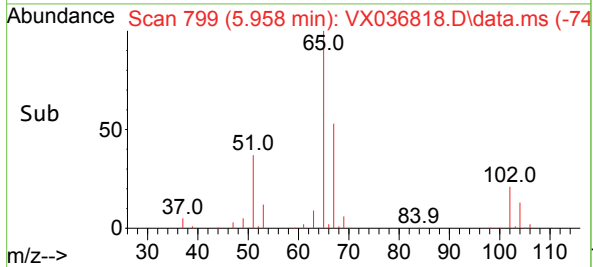
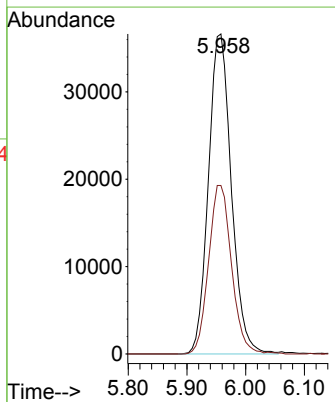
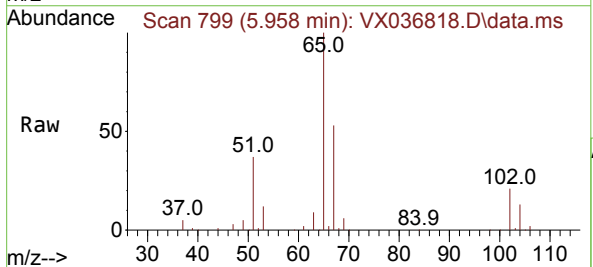
Instrument : MSVOA_X
 ClientSampleId :
 COMP-3

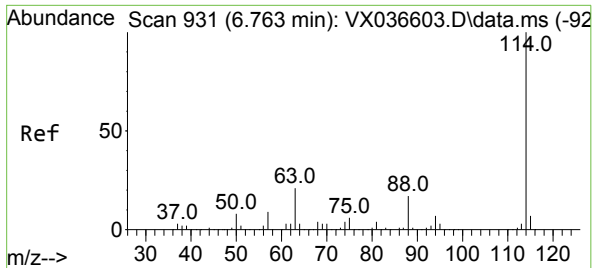
| Tgt Ion | Resp | Ion Ratio | Lower | Upper |
|---------|-------|-----------|-------|-------|
| 56 | 3212 | 100 | | |
| 69 | 169.5 | 23.4 | | 35.2# |
| 84 | 139.4 | 65.9 | | 98.9# |



#33
 1,2-Dichloroethane-d4
 Concen: 47.253 ug/l
 RT: 5.958 min Scan# 799
 Delta R.T. 0.006 min
 Lab File: VX036818.D
 Acq: 04 Aug 2023 18:19

| Tgt Ion | Resp | Ion Ratio | Lower | Upper |
|---------|-------|-----------|-------|-------|
| 65 | 99301 | 100 | | |
| 67 | 52.8 | 0.0 | | 100.2 |



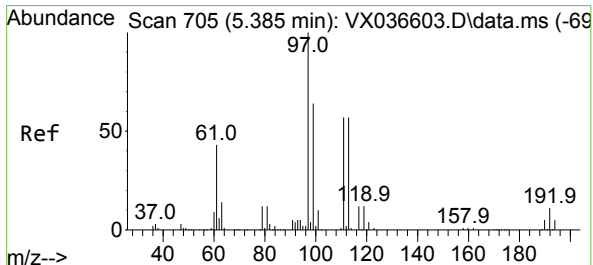
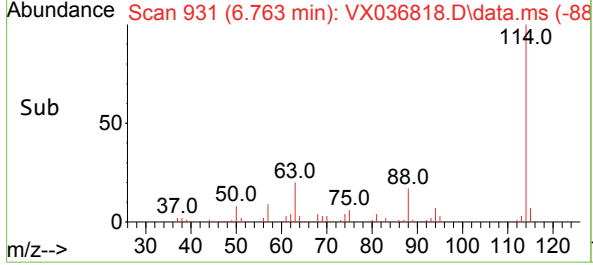
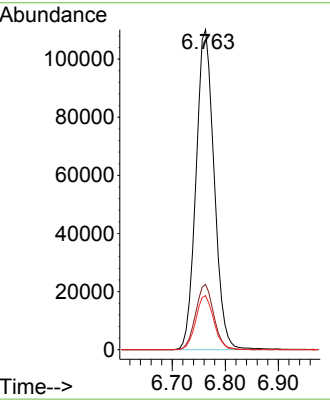
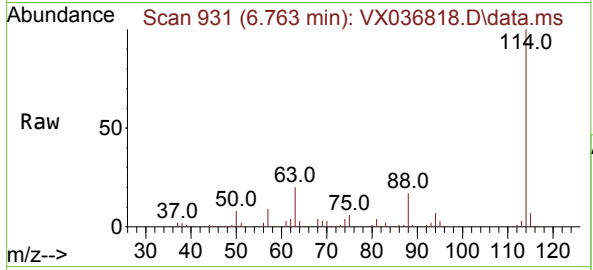


#34
 1,4-Difluorobenzene
 Concen: 50.000 ug/l
 RT: 6.763 min Scan# 911
 Delta R.T. -0.000 min
 Lab File: VX036818.D
 Acq: 04 Aug 2023 18:19

Instrument : MSVOA_X
 ClientSampleId :
 COMP-3

Tgt Ion:114 Resp: 261805

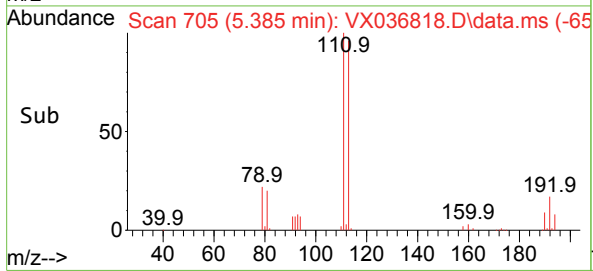
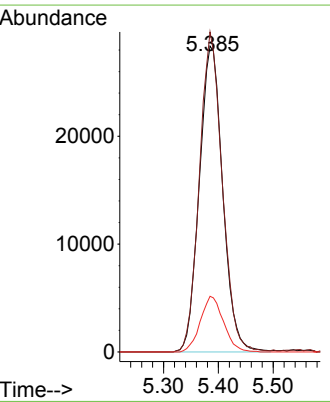
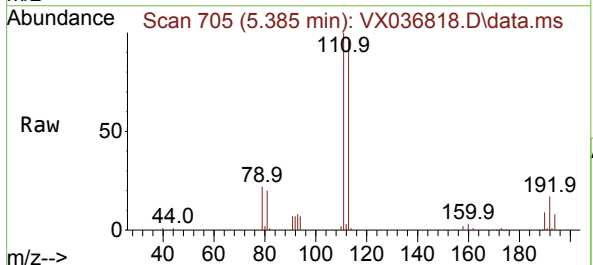
| Ion | Ratio | Lower | Upper |
|-----|-------|-------|-------|
| 114 | 100 | | |
| 63 | 20.4 | 0.0 | 45.0 |
| 88 | 16.9 | 0.0 | 36.6 |

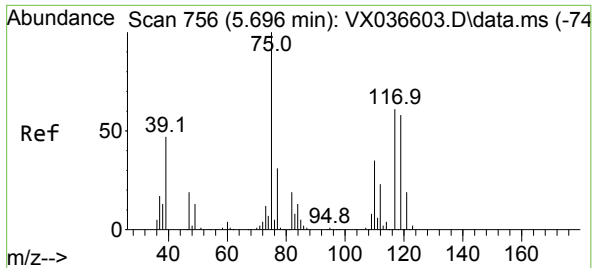


#35
 Dibromofluoromethane
 Concen: 46.671 ug/l
 RT: 5.385 min Scan# 705
 Delta R.T. -0.000 min
 Lab File: VX036818.D
 Acq: 04 Aug 2023 18:19

Tgt Ion:113 Resp: 83984

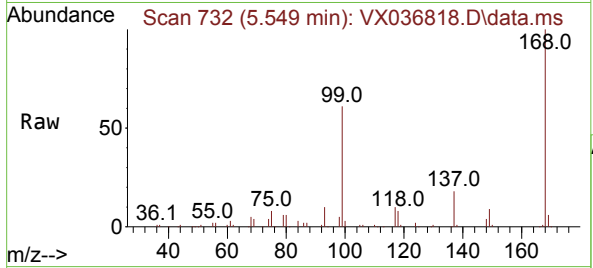
| Ion | Ratio | Lower | Upper |
|-----|-------|-------|-------|
| 113 | 100 | | |
| 111 | 101.9 | 82.9 | 124.3 |
| 192 | 18.0 | 13.3 | 19.9 |



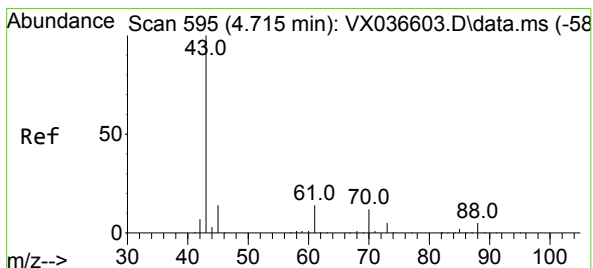
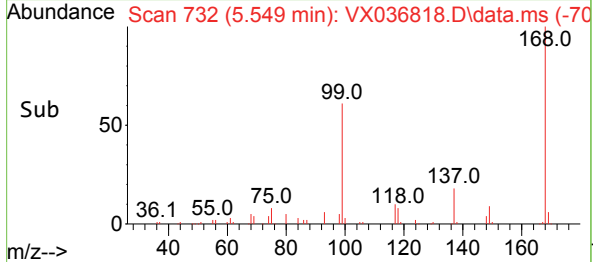
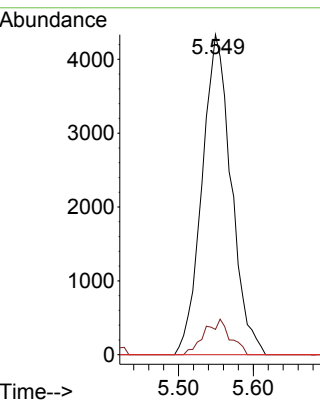


#36
 1,1-Dichloropropene
 Concen: 4.386 ug/l
 RT: 5.549 min Scan# 71
 Delta R.T. -0.147 min
 Lab File: VX036818.D
 Acq: 04 Aug 2023 18:19

Instrument : MSVOA_X
 ClientSampleId :
 COMP-3

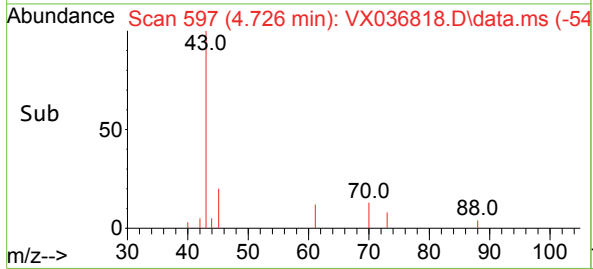
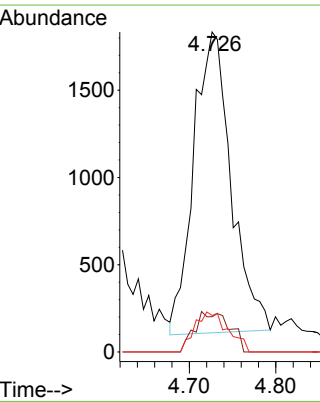
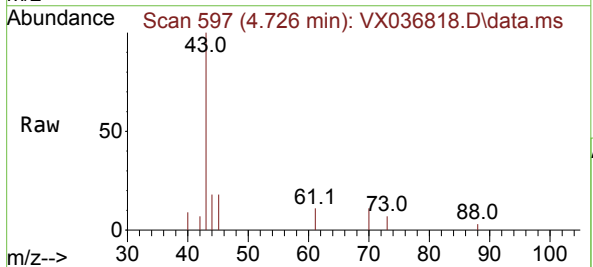


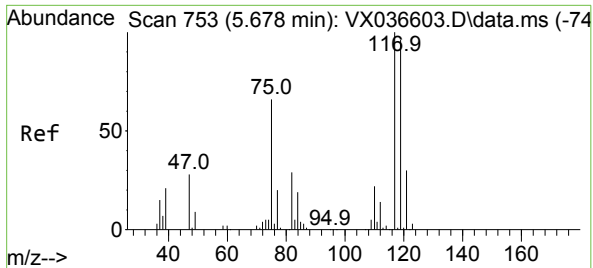
Tgt Ion: 75 Resp: 11763
 Ion Ratio Lower Upper
 75 100
 110 9.8 17.0 50.9#
 77 0.0 24.7 37.1#



#37
 Ethyl Acetate
 Concen: 1.708 ug/l
 RT: 4.726 min Scan# 597
 Delta R.T. 0.012 min
 Lab File: VX036818.D
 Acq: 04 Aug 2023 18:19

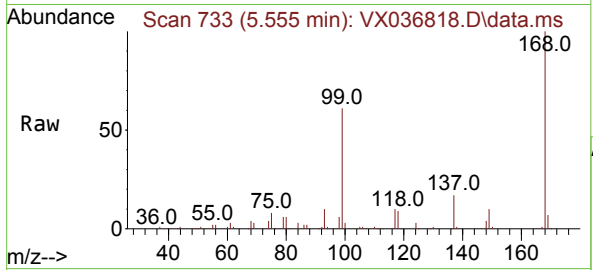
Tgt Ion: 43 Resp: 5186
 Ion Ratio Lower Upper
 43 100
 61 12.5 10.6 16.0
 70 11.8 8.3 12.5



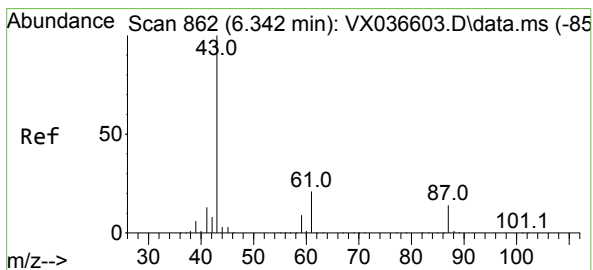
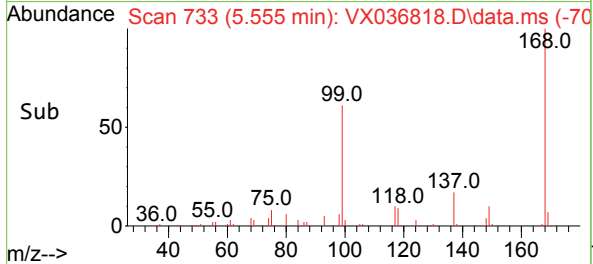
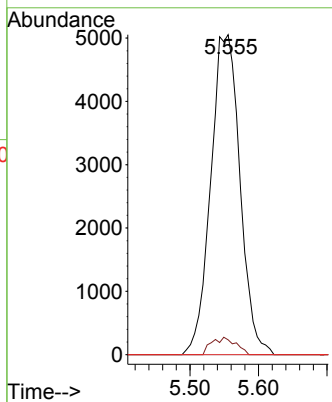


#38
 Carbon Tetrachloride
 Concen: 5.252 ug/l
 RT: 5.555 min Scan# 711
 Delta R.T. -0.122 min
 Lab File: VX036818.D
 Acq: 04 Aug 2023 18:19

Instrument : MSVOA_X
 ClientSampleId :
 COMP-3

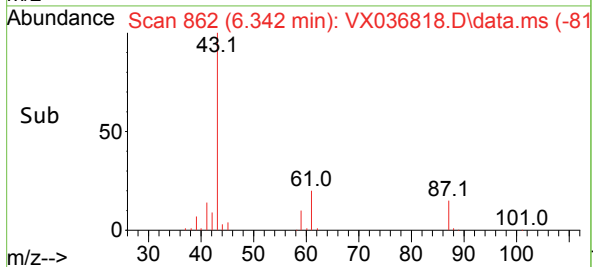
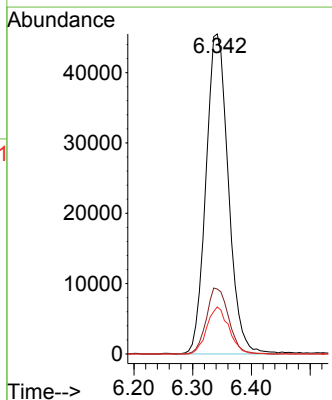
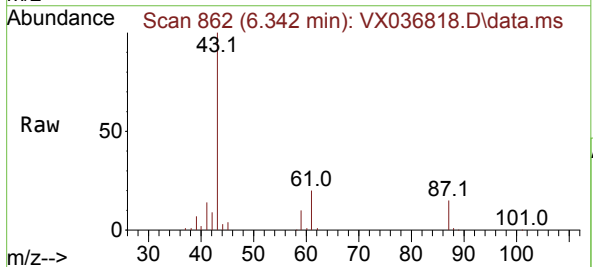


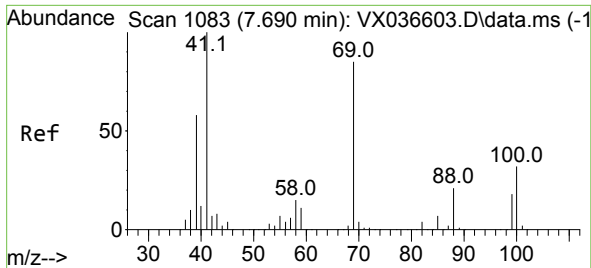
Tgt Ion: 117 Resp: 14977
 Ion Ratio Lower Upper
 117 100
 119 4.6 78.2 117.2#
 121 0.0 24.4 36.6#



#43
 Isopropyl Acetate
 Concen: 23.065 ug/l
 RT: 6.342 min Scan# 862
 Delta R.T. -0.000 min
 Lab File: VX036818.D
 Acq: 04 Aug 2023 18:19

Tgt Ion: 43 Resp: 120530
 Ion Ratio Lower Upper
 43 100
 61 20.5 15.2 22.8
 87 14.4 9.8 14.6

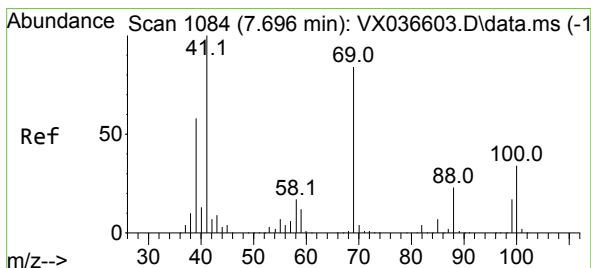
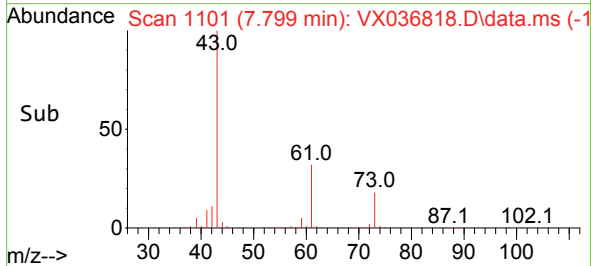
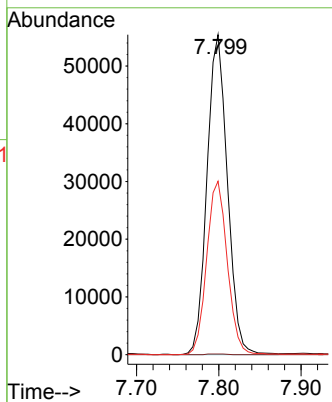
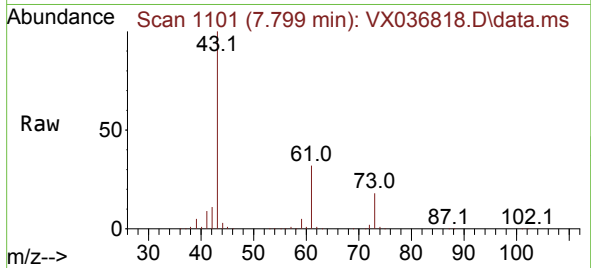




#48
 Methyl methacrylate
 Concen: 39.380 ug/l
 RT: 7.799 min Scan# 1101
 Delta R.T. 0.109 min
 Lab File: VX036818.D
 Acq: 04 Aug 2023 18:19

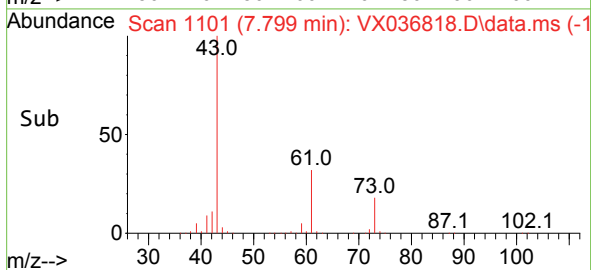
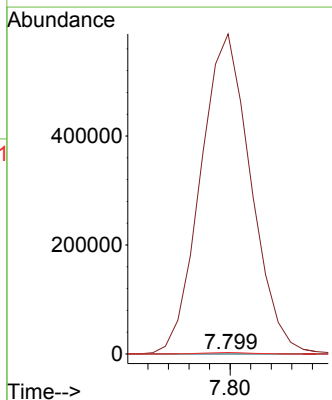
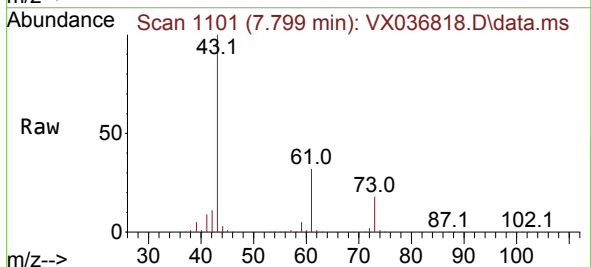
Instrument : MSVOA_X
 ClientSampleId : COMP-3

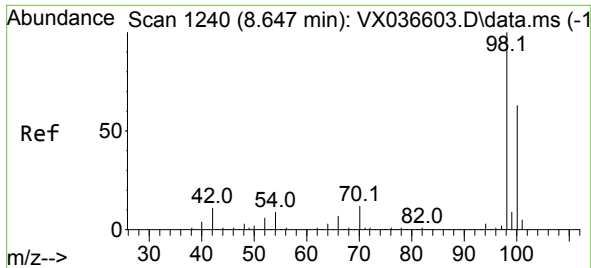
| Tgt Ion | Resp | Lower | Upper |
|---------|-------|-------|-------|
| 41 | 95704 | | |
| 69 | 0.2 | 59.2 | 88.8# |
| 39 | 54.8 | 47.7 | 71.5 |



#49
 1,4-Dioxane
 Concen: 2.811 ug/l
 RT: 7.799 min Scan# 1101
 Delta R.T. 0.103 min
 Lab File: VX036818.D
 Acq: 04 Aug 2023 18:19

| Tgt Ion | Resp | Lower | Upper |
|---------|----------|-------|-------|
| 88 | 138 | | |
| 43 | 729477.5 | 0.0 | 0.0# |
| 58 | 3089.1 | 60.1 | 90.1# |

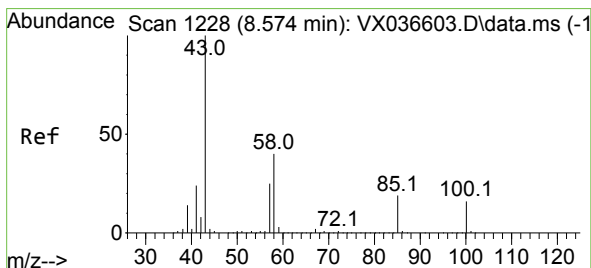
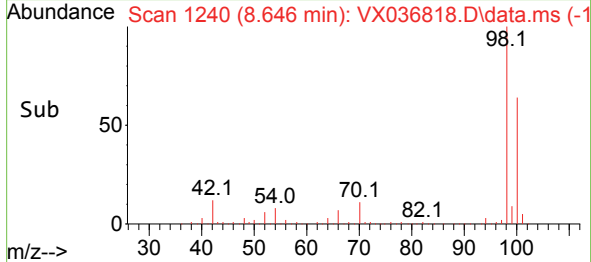
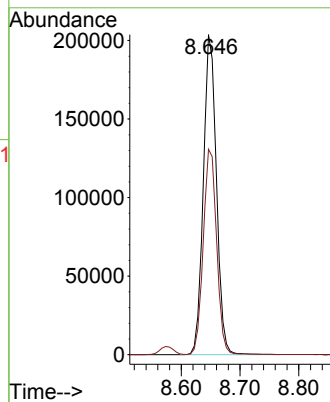
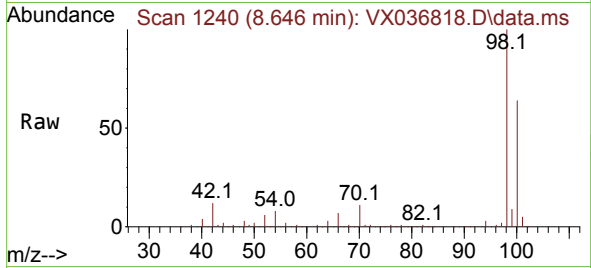




#50
 Toluene-d8
 Concen: 49.375 ug/l
 RT: 8.646 min Scan# 11
 Delta R.T. -0.000 min
 Lab File: VX036818.D
 Acq: 04 Aug 2023 18:19

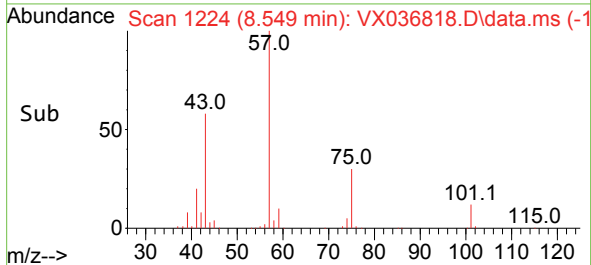
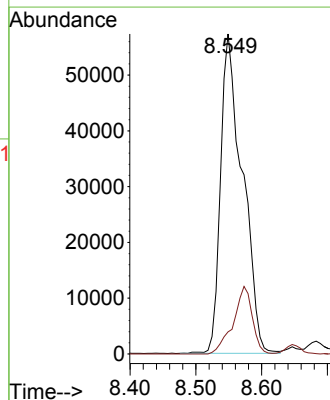
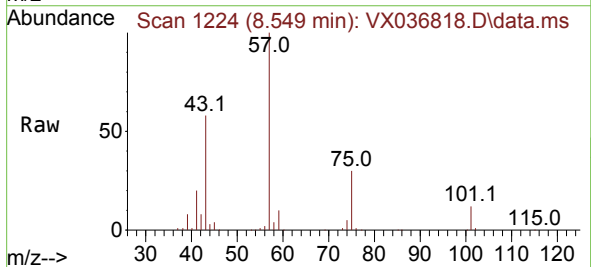
Instrument :
 MSVOA_X
 ClientSampleId :
 COMP-3

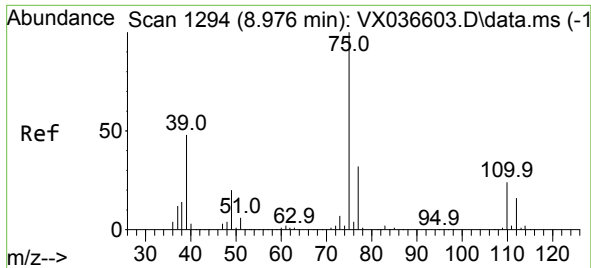
Tgt Ion: 98 Resp: 315082
 Ion Ratio Lower Upper
 98 100
 100 65.9 53.1 79.7



#51
 4-Methyl-2-Pentanone
 Concen: 45.739 ug/l
 RT: 8.549 min Scan# 1224
 Delta R.T. -0.025 min
 Lab File: VX036818.D
 Acq: 04 Aug 2023 18:19

Tgt Ion: 43 Resp: 132272
 Ion Ratio Lower Upper
 43 100
 58 0.0 30.4 45.6#

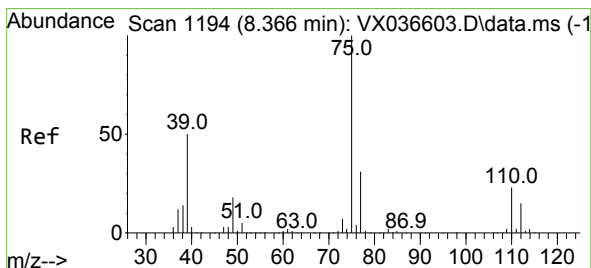
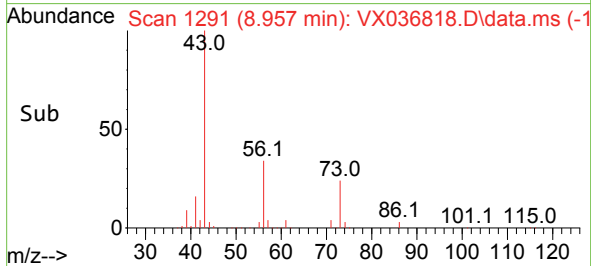
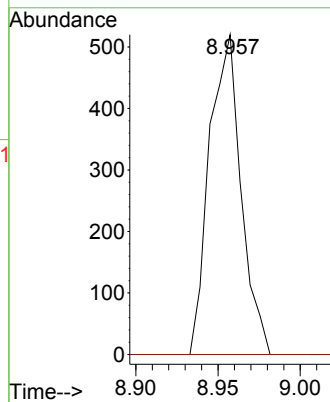
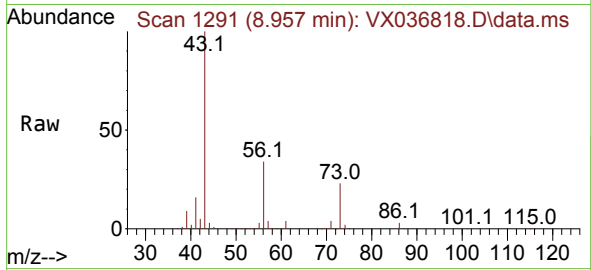




#53
 t-1,3-Dichloropropene
 Concen: 0.206 ug/l
 RT: 8.957 min Scan# 1124
 Delta R.T. -0.019 min
 Lab File: VX036818.D
 Acq: 04 Aug 2023 18:19

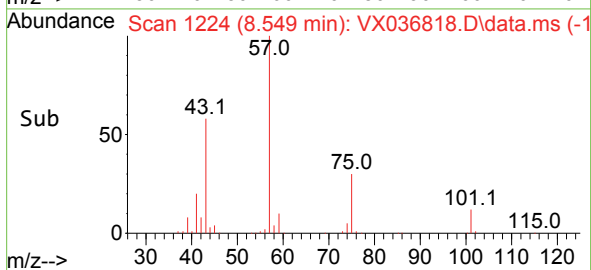
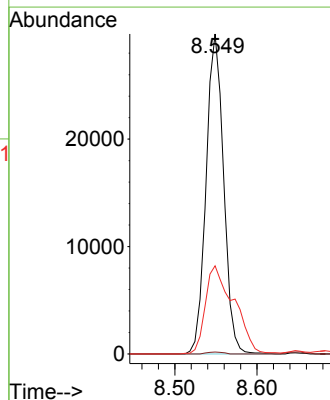
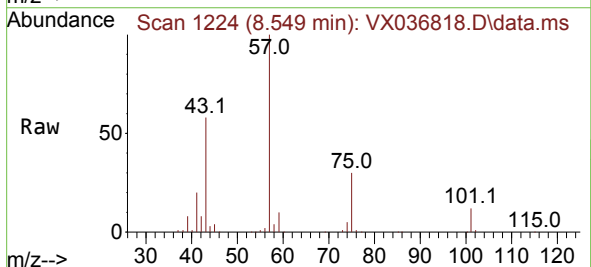
Instrument : MSVOA_X
 ClientSampleId :
 COMP-3

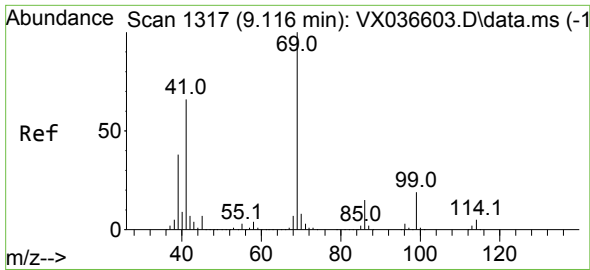
Tgt Ion: 75 Resp: 696
 Ion Ratio Lower Upper
 75 100
 77 0.0 25.7 38.5#



#54
 cis-1,3-Dichloropropene
 Concen: 12.347 ug/l
 RT: 8.549 min Scan# 1224
 Delta R.T. 0.183 min
 Lab File: VX036818.D
 Acq: 04 Aug 2023 18:19

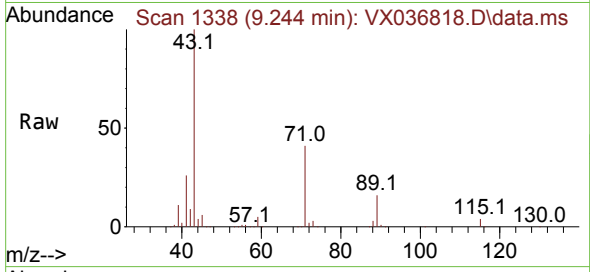
Tgt Ion: 75 Resp: 44074
 Ion Ratio Lower Upper
 75 100
 77 0.6 25.3 37.9#
 39 27.5 46.7 70.1#



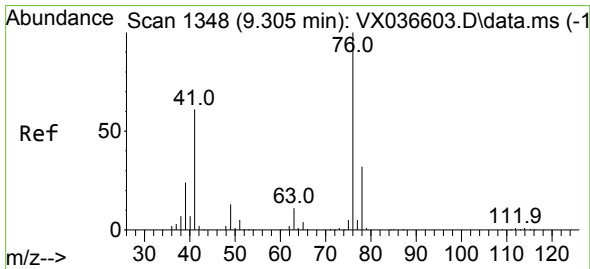
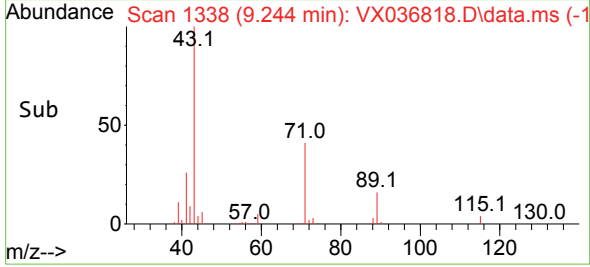
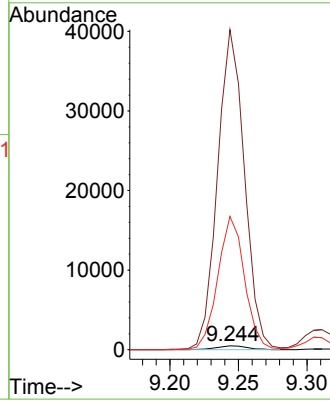


#56
 Ethyl methacrylate
 Concen: 0.226 ug/l
 RT: 9.244 min Scan# 1338
 Delta R.T. 0.128 min
 Lab File: VX036818.D
 Acq: 04 Aug 2023 18:19

Instrument : MSVOA_X
 ClientSampleId :
 COMP-3

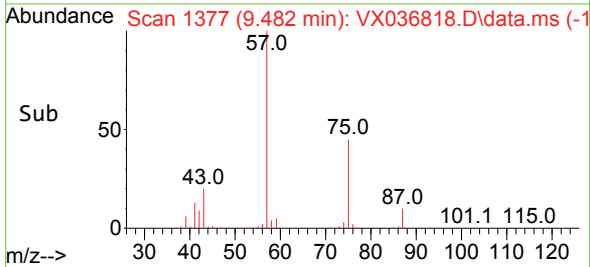
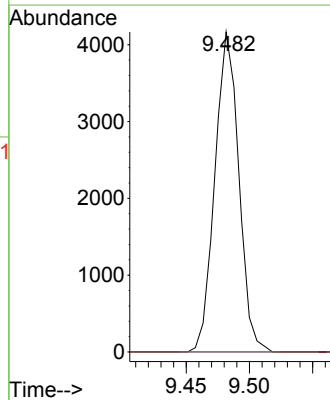
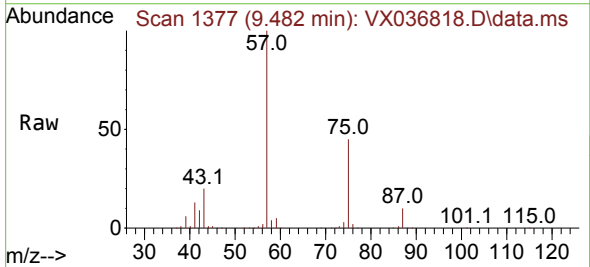


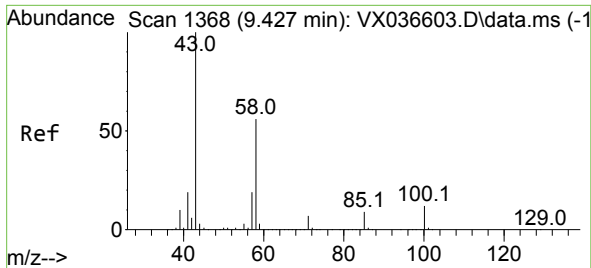
Tgt Ion: 69 Resp: 757
 Ion Ratio Lower Upper
 69 100
 41 7260.6 56.8 85.2#
 39 3007.1 32.0 48.0#



#57
 1,3-Dichloropropane
 Concen: 1.598 ug/l
 RT: 9.482 min Scan# 1377
 Delta R.T. 0.176 min
 Lab File: VX036818.D
 Acq: 04 Aug 2023 18:19

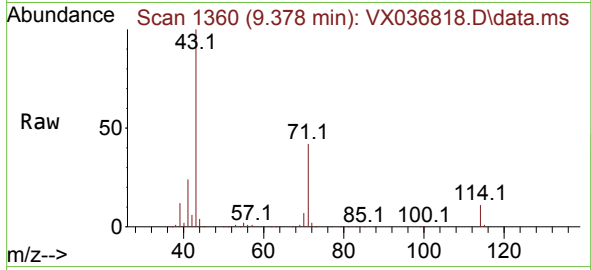
Tgt Ion: 76 Resp: 5469
 Ion Ratio Lower Upper
 76 100
 78 0.0 26.1 39.1#



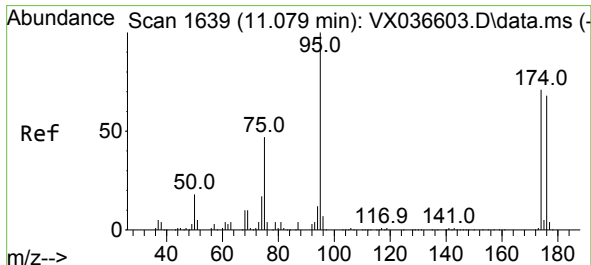
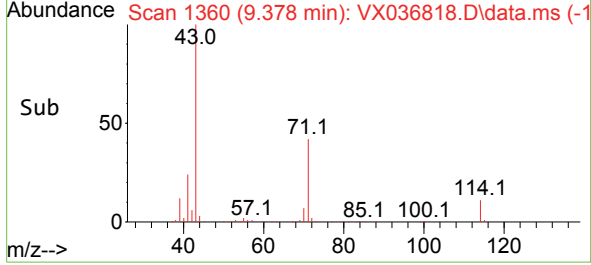
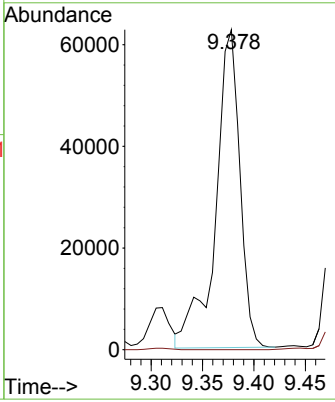


#59
 2-Hexanone
 Concen: 47.758 ug/l
 RT: 9.378 min Scan# 11
 Delta R.T. -0.049 min
 Lab File: VX036818.D
 Acq: 04 Aug 2023 18:19

Instrument : MSVOA_X
 ClientSampleId : COMP-3

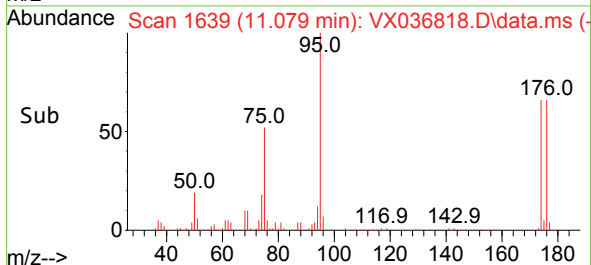
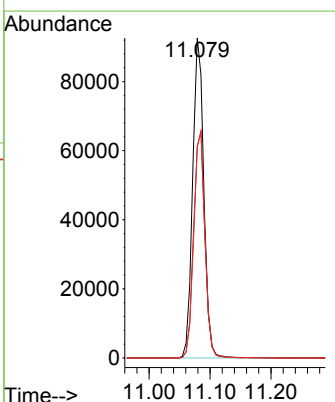
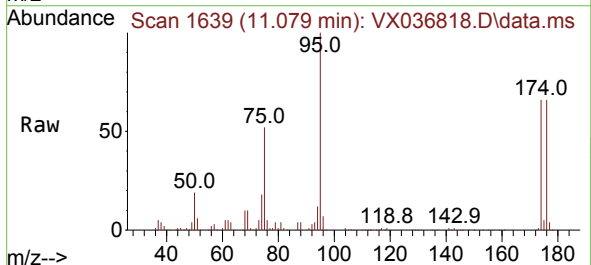


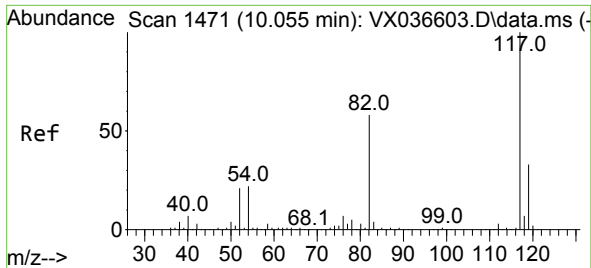
Tgt Ion: 43 Resp: 102500
 Ion Ratio Lower Upper
 43 100
 58 0.0 26.2 78.5#



#62
 4-Bromofluorobenzene
 Concen: 48.859 ug/l
 RT: 11.079 min Scan# 1639
 Delta R.T. -0.000 min
 Lab File: VX036818.D
 Acq: 04 Aug 2023 18:19

Tgt Ion: 95 Resp: 117633
 Ion Ratio Lower Upper
 95 100
 174 72.0 0.0 135.6
 176 70.7 0.0 131.0

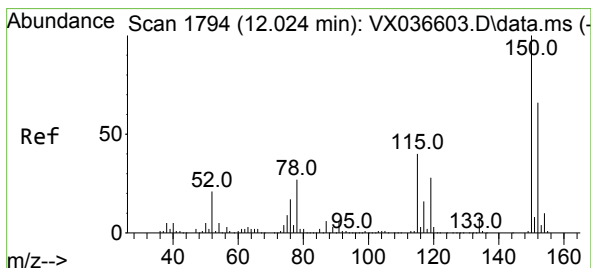
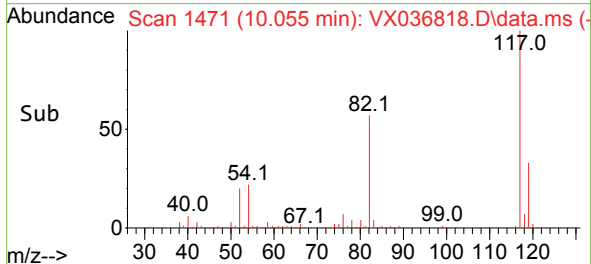
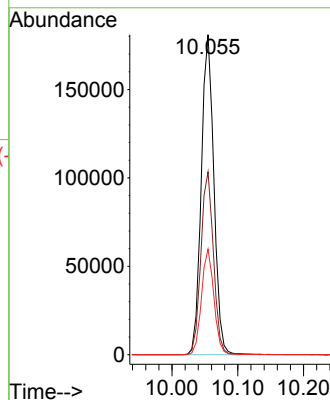
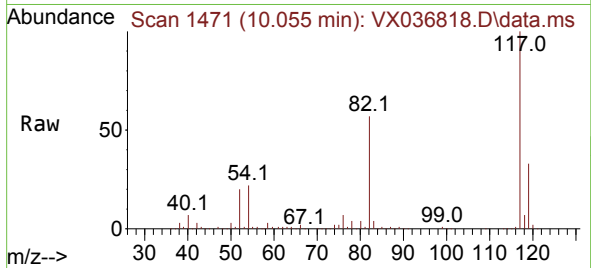




#63
 Chlorobenzene-d5
 Concen: 50.000 ug/l
 RT: 10.055 min Scan# 1471
 Delta R.T. -0.000 min
 Lab File: VX036818.D
 Acq: 04 Aug 2023 18:19

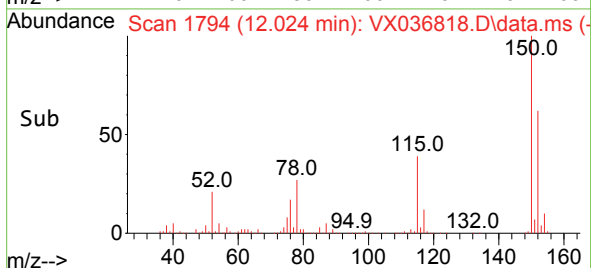
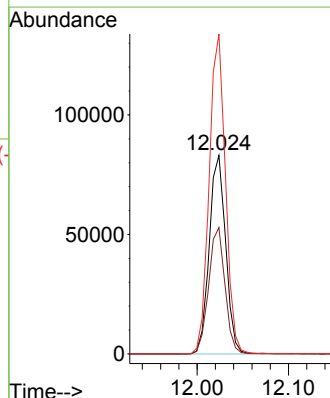
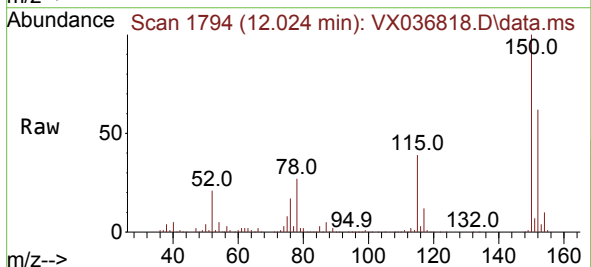
Instrument : MSVOA_X
 ClientSampleId :
 COMP-3

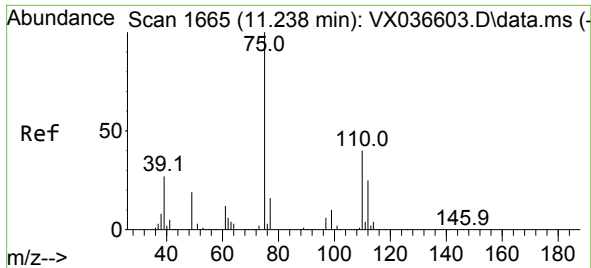
Tgt Ion:117 Resp: 241145
 Ion Ratio Lower Upper
 117 100
 82 57.1 46.2 69.4
 119 33.0 25.5 38.3



#72
 1,4-Dichlorobenzene-d4
 Concen: 50.000 ug/l
 RT: 12.024 min Scan# 1794
 Delta R.T. -0.000 min
 Lab File: VX036818.D
 Acq: 04 Aug 2023 18:19

Tgt Ion:152 Resp: 103777
 Ion Ratio Lower Upper
 152 100
 115 63.3 43.3 129.9
 150 159.6 0.0 345.0

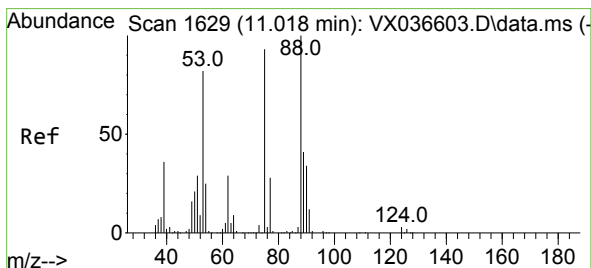
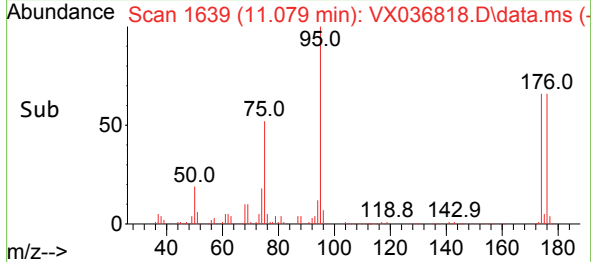
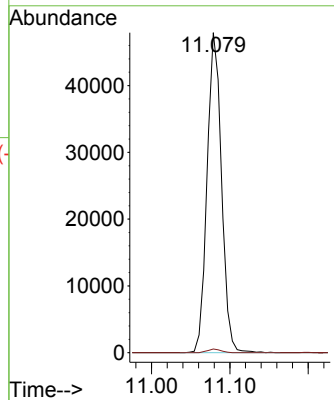
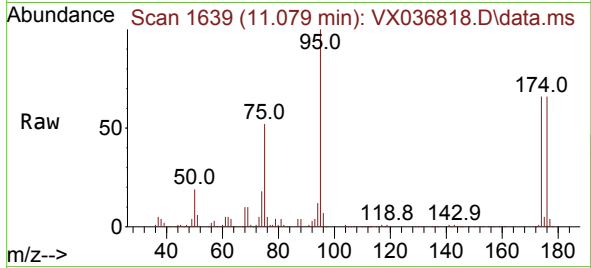




#76
 1,2,3-Trichloropropane
 Concen: 24.994 ug/l
 RT: 11.079 min Scan# 1639
 Delta R.T. -0.159 min
 Lab File: VX036818.D
 Acq: 04 Aug 2023 18:19

Instrument : MSVOA_X
 ClientSampleId :
 COMP-3

Tgt Ion: 75 Resp: 61010
 Ion Ratio Lower Upper
 75 100
 77 1.1 19.1 57.5#



#81
 trans-1,4-Dichloro-2-butene
 Concen: 56.651 ug/l
 RT: 11.079 min Scan# 1639
 Delta R.T. 0.061 min
 Lab File: VX036818.D
 Acq: 04 Aug 2023 18:19

Tgt Ion: 75 Resp: 61010
 Ion Ratio Lower Upper
 75 100
 53 0.0 90.5 135.7#
 89 0.0 36.9 55.3#

