

Data Path : Z:\voasrv\HPCHEM1\MSVOA_X\Data\VX080522\
 Data File : VX030445.D
 Acq On : 05 Aug 2022 22:02
 Operator : JC/MD
 Sample : N4066-03
 Misc : 5.0mL/MSVOA_X/WATER
 ALS Vial : 33 Sample Multiplier: 1

Instrument :
 MSVOA_X
 ClientSampleId :
 F5D94

Integration Parameters: LSCINT.P

Integrator: RTE
 Smoothing : OFF
 Sampling : 1
 Start Thrs: 0.2
 Stop Thrs : 0

Filtering: 5
 Min Area: 0 % of largest Peak
 Max Peaks: 100
 Peak Location: TOP

If leading or trailing edge < 100 prefer < Baseline drop else tangent >
 Peak separation: 5

Method : Z:\voasrv\HPCHEM1\MSVOA_X\Method\SFAMXML080422WMA.M
 Title : VOC Analysis

Signal : TIC: VX030445.D\data.ms

peak #	R.T. min	first scan	max scan	last scan	PK TY	peak height	corr. area	corr. % max.	% of total
1	1.374	43	47	57	rVB	2390562	2624184	22.89%	9.827%
2	1.666	91	95	103	rVB2	100281	145408	1.27%	0.545%
3	1.746	104	108	117	rVB	69522	91280	0.80%	0.342%
4	1.953	138	142	149	rVB	21853	30910	0.27%	0.116%
5	2.130	169	171	172	rBV2	1004	629	0.01%	0.002%
6	2.307	194	200	212	rVB2	244206	399283	3.48%	1.495%
7	2.508	232	233	238	rVB2	556	555	0.00%	0.002%
8	2.636	253	254	257	rBV3	435	508	0.00%	0.002%
9	2.721	266	268	269	rBV	668	504	0.00%	0.002%
10	2.782	269	278	281	rBV	18105	40723	0.36%	0.152%
11	2.977	306	310	312	rBV2	1454	1920	0.02%	0.007%
12	3.093	321	329	350	rVB4	308593	729578	6.36%	2.732%
13	3.233	350	352	353	rBV2	675	620	0.01%	0.002%
14	3.398	375	379	380	rBV	525	476	0.00%	0.002%
15	3.441	382	386	394	rVV4	1809	3911	0.03%	0.015%
16	3.556	404	405	407	rBV	830	613	0.01%	0.002%
17	3.739	433	435	438	rVB	715	550	0.00%	0.002%
18	3.898	459	461	462	rBV	386	419	0.00%	0.002%
19	3.983	471	475	477	rBV2	833	1032	0.01%	0.004%
20	4.209	510	512	513	rBV2	619	524	0.00%	0.002%
21	4.306	518	528	543	rVB	39336	113939	0.99%	0.427%
22	4.495	545	559	579	rBV	4205264	11466130	100.00%	42.938%
23	5.068	641	653	668	rBV	147558	458860	4.00%	1.718%
24	5.397	705	707	709	rVV2	743	618	0.01%	0.002%
25	5.477	710	720	732	rVB3	26174	82174	0.72%	0.308%
26	5.751	762	765	767	rBV2	461	463	0.00%	0.002%
27	5.794	769	772	773	rBV2	378	444	0.00%	0.002%
28	5.849	773	781	782	rBV5	4111	6290	0.05%	0.024%
29	5.977	790	802	809	rBV2	383766	1116381	9.74%	4.181%
30	6.166	827	833	836	rBV7	4686	10167	0.09%	0.038%
31	6.269	845	850	858	rVB4	6636	15436	0.13%	0.058%
32	6.349	858	863	865	rBV3	5264	8117	0.07%	0.030%
33	6.452	876	880	882	rBV3	360	402	0.00%	0.002%
34	6.556	892	897	902	rBV2	744	1195	0.01%	0.004%
35	6.769	919	932	946	rBV	264373	635090	5.54%	2.378%
36	6.915	953	956	960	rVB2	523	806	0.01%	0.003%

Data Path : Z:\voasrv\HPCHEM1\MSVOA_X\Data\VX080522\
 Data File : VX030445.D
 Acq On : 05 Aug 2022 22:02
 Operator : JC/MD
 Sample : N4066-03
 Misc : 5.0mL/MSVOA_X/WATER
 ALS Vial : 33 Sample Multiplier: 1

Instrument :
 MSVOA_X
 ClientSampleId :
 F5D94

Integration Parameters: LSCINT.P

Integrator: RTE
 Smoothing : OFF
 Sampling : 1
 Start Thrs: 0.2
 Stop Thrs : 0

Filtering: 5
 Min Area: 0 % of largest Peak
 Max Peaks: 100
 Peak Location: TOP

If leading or trailing edge < 100 prefer < Baseline drop else tangent >
 Peak separation: 5

Method : Z:\voasrv\HPCHEM1\MSVOA_X\Method\SFAMXML080422WMA.M
 Title : VOC Analysis

37	7.129	981	991	1012	rBV	1415562	3075390	26.82%	11.517%
38	7.318	1013	1022	1029	rBV2	229154	521699	4.55%	1.954%
39	7.495	1045	1051	1053	rBV5	1357	2234	0.02%	0.008%
40	7.580	1063	1065	1066	rBV	526	392	0.00%	0.001%
41	7.659	1074	1078	1085	rVB6	2544	4798	0.04%	0.018%
42	7.775	1095	1097	1101	rBV2	416	594	0.01%	0.002%
43	7.860	1108	1111	1112	rBV	967	794	0.01%	0.003%
44	7.995	1132	1133	1137	rVB2	562	596	0.01%	0.002%
45	8.068	1142	1145	1147	rBV2	505	693	0.01%	0.003%
46	8.159	1157	1160	1163	rBV	483	792	0.01%	0.003%
47	8.196	1163	1166	1169	rVB2	495	550	0.00%	0.002%
48	8.251	1173	1175	1178	rVB	576	476	0.00%	0.002%
49	8.330	1181	1188	1197	rBV	155465	251848	2.20%	0.943%
50	8.482	1210	1213	1214	rBV	1047	767	0.01%	0.003%
51	8.580	1227	1229	1232	rVB2	406	446	0.00%	0.002%
52	8.653	1234	1241	1249	rBV	555771	856589	7.47%	3.208%
53	8.958	1285	1291	1302	rBV	108546	168661	1.47%	0.632%
54	9.080	1308	1311	1312	rBV	740	627	0.01%	0.002%
55	9.135	1318	1320	1323	rVB2	593	485	0.00%	0.002%
56	9.275	1337	1343	1351	rBV	273891	410475	3.58%	1.537%
57	9.391	1356	1362	1377	rBV	486688	699708	6.10%	2.620%
58	9.519	1382	1383	1385	rBV2	725	528	0.00%	0.002%
59	9.622	1398	1400	1403	rVB	649	536	0.00%	0.002%
60	9.732	1416	1418	1422	rVB3	917	909	0.01%	0.003%
61	9.781	1422	1426	1428	rVB2	761	798	0.01%	0.003%
62	9.805	1428	1430	1432	rBV2	493	461	0.00%	0.002%
63	9.842	1434	1436	1440	rVV2	507	580	0.01%	0.002%
64	9.945	1450	1453	1455	rBV2	387	425	0.00%	0.002%
65	10.055	1466	1471	1479	rBV	543919	723824	6.31%	2.711%
66	10.214	1495	1497	1499	rVB3	684	443	0.00%	0.002%
67	10.269	1503	1506	1509	rVB2	595	535	0.00%	0.002%
68	10.683	1570	1574	1576	rBV2	686	692	0.01%	0.003%
69	10.976	1619	1622	1624	rVB3	741	919	0.01%	0.003%
70	11.061	1634	1636	1637	rBV	615	403	0.00%	0.002%
71	11.098	1640	1642	1644	rVB2	543	397	0.00%	0.001%
72	11.195	1653	1658	1668	rVB	427084	543169	4.74%	2.034%
73	11.329	1678	1680	1682	rBV2	628	688	0.01%	0.003%
74	11.463	1700	1702	1705	rBV3	473	646	0.01%	0.002%
75	12.024	1789	1794	1805	rBV	569627	683724	5.96%	2.560%
76	12.323	1837	1843	1851	rBV	607567	742276	6.47%	2.780%

Data Path : Z:\voasrv\HPCHEM1\MSVOA_X\Data\VX080522\
 Data File : VX030445.D
 Acq On : 05 Aug 2022 22:02
 Operator : JC/MD
 Sample : N4066-03
 Misc : 5.0mL/MSVOA_X/WATER
 ALS Vial : 33 Sample Multiplier: 1

Instrument :
 MSVOA_X
 ClientSampleId :
 F5D94

Integration Parameters: LSCINT.P

Integrator: RTE
 Smoothing : OFF
 Sampling : 1
 Start Thrs: 0.2
 Stop Thrs : 0

Filtering: 5
 Min Area: 0 % of largest Peak
 Max Peaks: 100
 Peak Location: TOP

If leading or trailing edge < 100 prefer < Baseline drop else tangent >
 Peak separation: 5

Method : Z:\voasrv\HPCHEM1\MSVOA_X\Method\SFAMXML080422WMA.M
 Title : VOC Analysis

77	12.427	1859	1860	1862	rBV	694	380	0.00%	0.001%
78	12.506	1871	1873	1874	rBV2	499	429	0.00%	0.002%
79	12.677	1898	1901	1902	rBV2	505	566	0.00%	0.002%
80	12.701	1904	1905	1908	rVV	623	389	0.00%	0.001%
81	13.042	1959	1961	1964	rVB2	531	544	0.00%	0.002%
82	13.219	1987	1990	1992	rVB2	558	498	0.00%	0.002%
83	13.286	1998	2001	2002	rBV2	503	516	0.00%	0.002%
84	13.341	2007	2010	2011	rVV2	439	471	0.00%	0.002%
85	13.359	2011	2013	2017	rVB2	573	682	0.01%	0.003%
86	13.475	2029	2032	2034	rBV	401	427	0.00%	0.002%
87	13.609	2049	2054	2056	rVB2	727	1052	0.01%	0.004%
88	13.634	2056	2058	2060	rBV	644	642	0.01%	0.002%
89	13.780	2080	2082	2084	rVV	562	616	0.01%	0.002%
90	13.841	2088	2092	2095	rBV2	241	480	0.00%	0.002%
91	13.884	2097	2099	2101	rVB2	573	425	0.00%	0.002%
92	14.152	2141	2143	2144	rBV	667	396	0.00%	0.001%
93	14.359	2174	2177	2179	rBV2	490	643	0.01%	0.002%
94	14.463	2191	2194	2197	rBV3	529	811	0.01%	0.003%
95	14.542	2205	2207	2209	rBV2	465	394	0.00%	0.001%
96	14.756	2241	2242	2245	rBV3	527	535	0.00%	0.002%
97	15.493	2359	2363	2368	rBV3	512	954	0.01%	0.004%
98	15.725	2399	2401	2404	rBV3	471	472	0.00%	0.002%
99	16.024	2448	2450	2451	rVB	852	450	0.00%	0.002%
100	16.042	2451	2453	2454	rBV	571	400	0.00%	0.001%

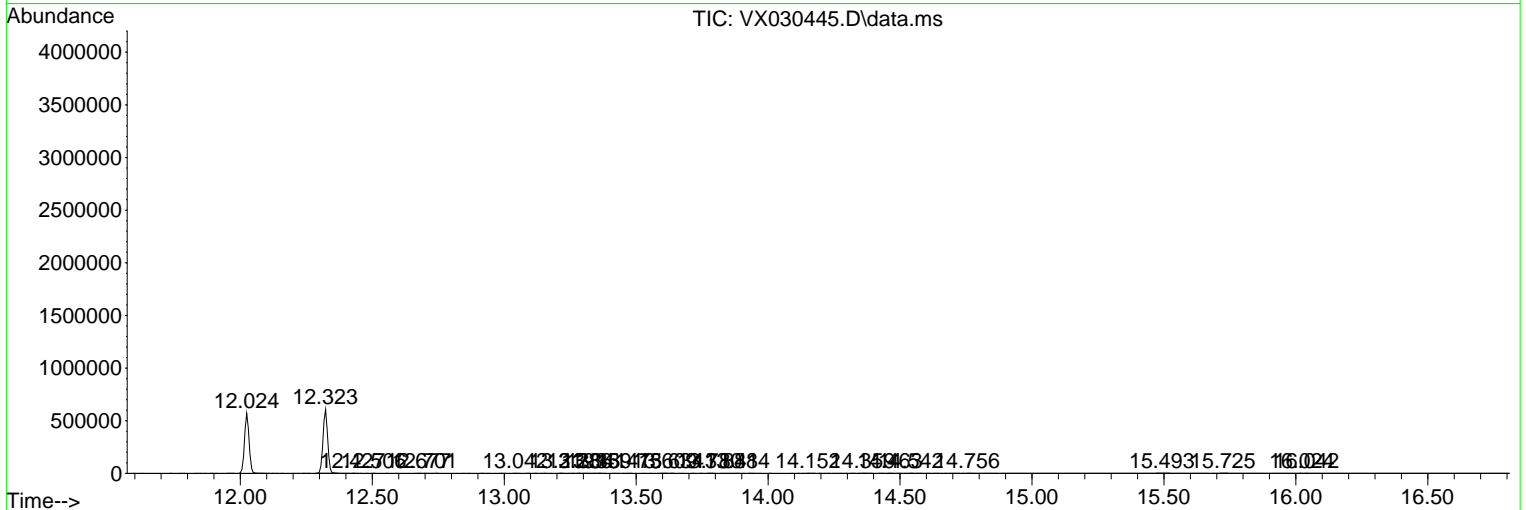
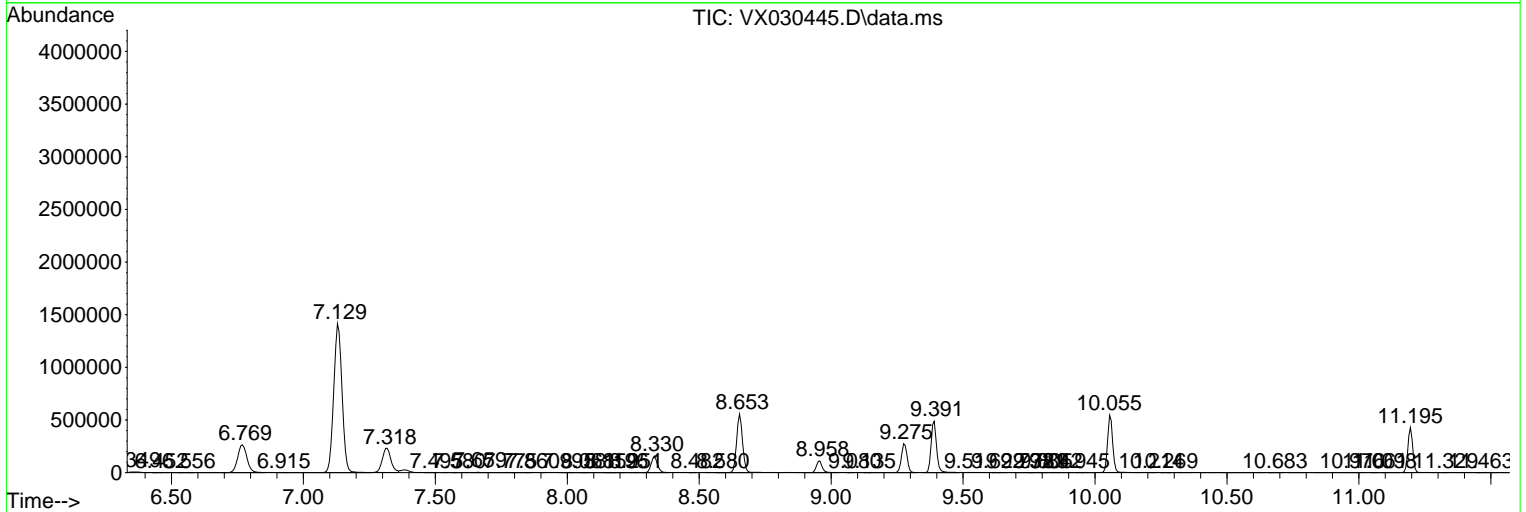
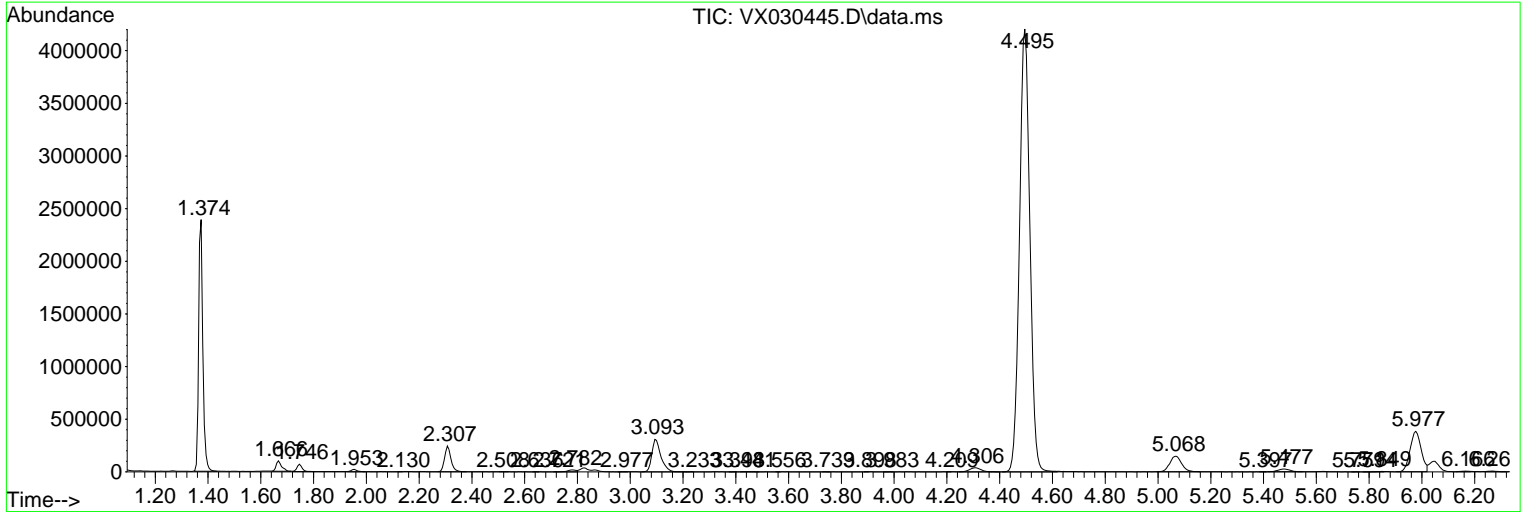
Sum of corrected areas: 26703878

Data Path : Z:\voasrv\HPCHEM1\MSVOA_X\Data\VX080522\
 Data File : VX030445.D
 Acq On : 05 Aug 2022 22:02
 Operator : JC/MD
 Sample : N4066-03
 Misc : 5.0mL/MSVOA_X/WATER
 ALS Vial : 33 Sample Multiplier: 1

Instrument :
 MSVOA_X
 ClientSampleId :
 F5D94

Quant Method : Z:\voasrv\HPCHEM1\MSVOA_X\Method\SFAMXML080422WMA.M
 Quant Title : VOC Analysis

TIC Library : C:\Database\NIST20.L
 TIC Integration Parameters: LSCINT.P



Data Path : Z:\voasrv\HPCHEM1\MSVOA_X\Data\VX080522\
 Data File : VX030445.D
 Acq On : 05 Aug 2022 22:02
 Operator : JC/MD
 Sample : N4066-03
 Misc : 5.0mL/MSVOA_X/WATER
 ALS Vial : 33 Sample Multiplier: 1

Instrument :
 MSVOA_X
 ClientSampleId :
 F5D94

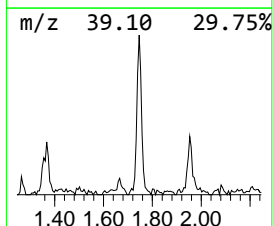
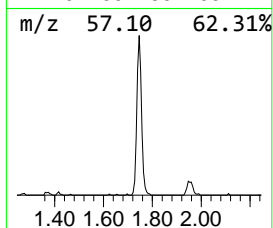
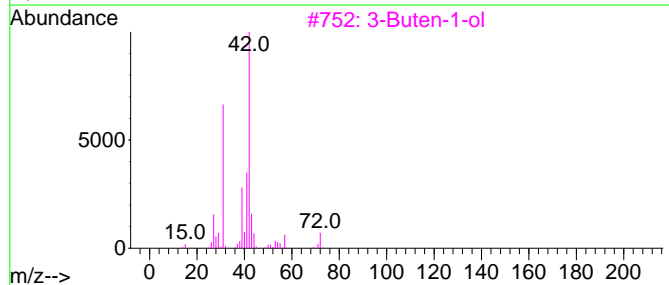
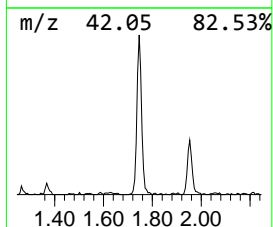
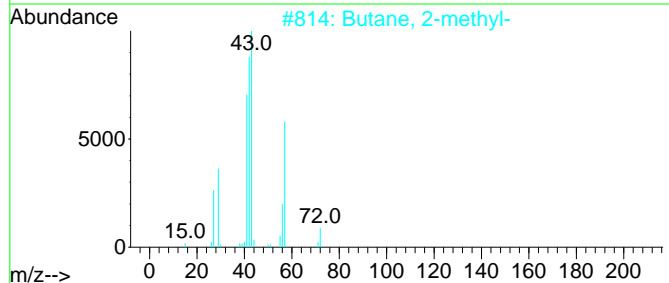
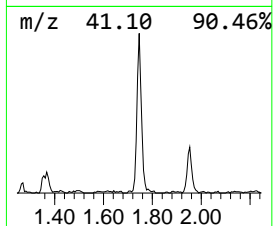
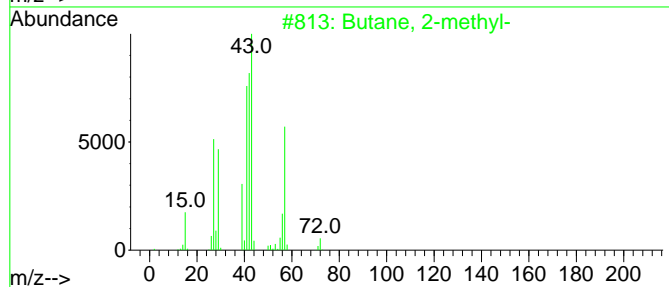
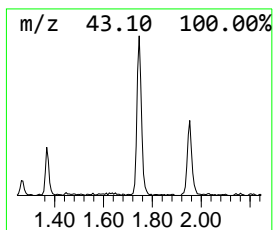
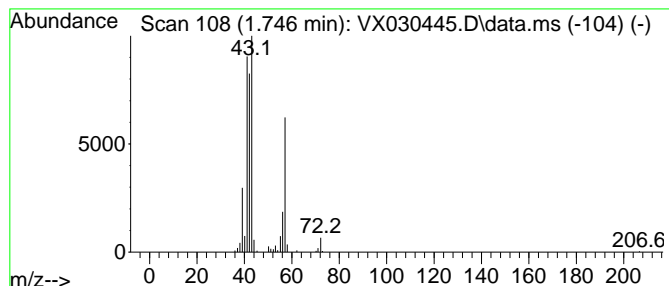
Quant Method : Z:\voasrv\HPCHEM1\MSVOA_X\Method\SFAMXML080422WMA.M
 Quant Title : VOC Analysis

TIC Library : C:\Database\NIST20.L
 TIC Integration Parameters: LSCINT.P

 Peak Number 1 (DEL) Alkane: Straight-Chai... Concentration Rank 3

R.T.	EstConc	Area	Relative to ISTD	R.T.
1.746	7.19 ug/L	91280	1,4-Difluorobenzene	6.769

Hit#	of	5	Tentative ID	MW	MolForm	CAS#	Qual
1			Butane, 2-methyl-	72	C5H12	000078-78-4	91
2			Butane, 2-methyl-	72	C5H12	000078-78-4	86
3			3-Buten-1-ol	72	C4H8O	000627-27-0	47
4			Isobutylene epoxide	72	C4H8O	000558-30-5	42
5			2(3H)-Furanone, dihydro-4-methyl-	100	C5H8O2	001679-49-8	40



Data Path : Z:\voasrv\HPCHEM1\MSVOA_X\Data\VX080522\
 Data File : VX030445.D
 Acq On : 05 Aug 2022 22:02
 Operator : JC/MD
 Sample : N4066-03
 Misc : 5.0mL/MSVOA_X/WATER
 ALS Vial : 33 Sample Multiplier: 1

Instrument :
 MSVOA_X
 ClientSampleId :
 F5D94

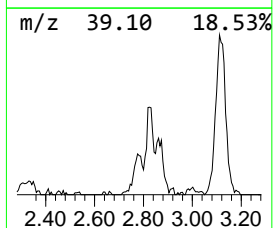
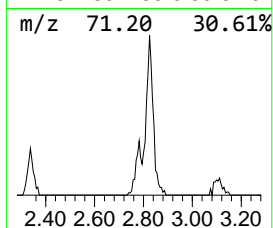
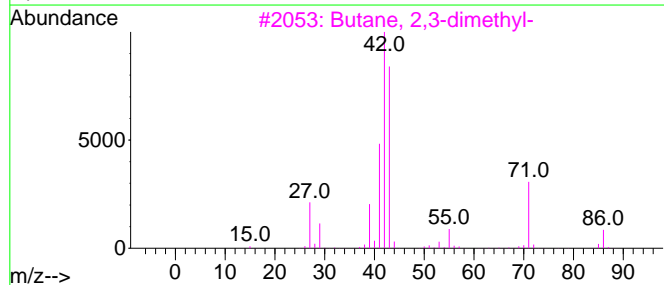
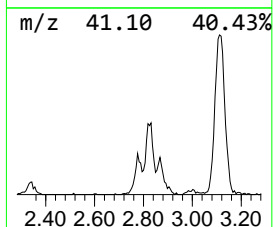
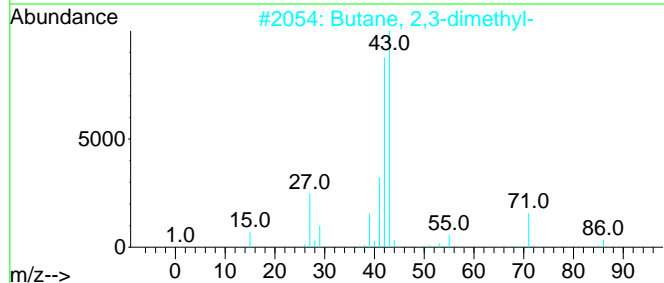
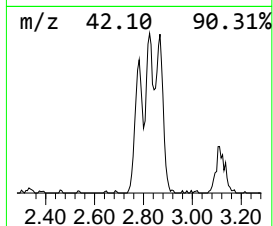
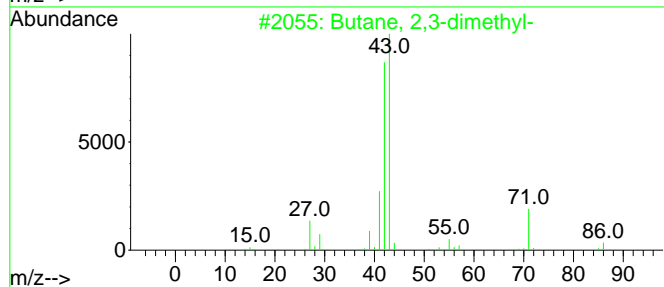
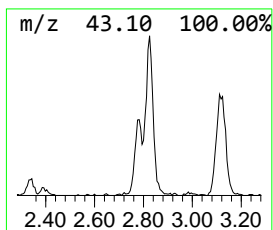
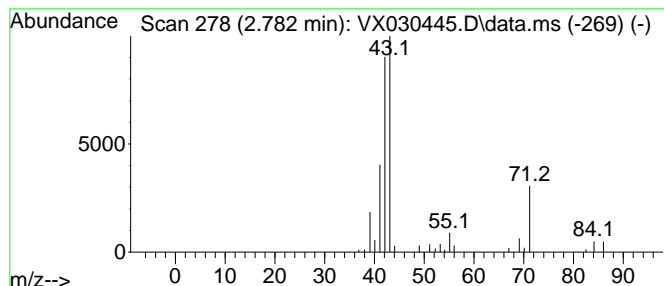
Quant Method : Z:\voasrv\HPCHEM1\MSVOA_X\Method\SFAMXLM080422WMA.M
 Quant Title : VOC Analysis

TIC Library : C:\Database\NIST20.L
 TIC Integration Parameters: LSCINT.P

 Peak Number 2 (DEL) Alkane: Straight-Chai... Concentration Rank 4

R.T.	EstConc	Area	Relative to ISTD	R.T.
2.782	3.21 ug/L	40723	1,4-Difluorobenzene	6.769

Hit#	of	5	Tentative ID	MW	MolForm	CAS#	Qual
1			Butane, 2,3-dimethyl-	86	C6H14	000079-29-8	80
2			Butane, 2,3-dimethyl-	86	C6H14	000079-29-8	64
3			Butane, 2,3-dimethyl-	86	C6H14	000079-29-8	56
4			Butane, 2,3-dimethyl-	86	C6H14	000079-29-8	49
5			Pentane, 2-methyl-	86	C6H14	000107-83-5	47



Data Path : Z:\voasrv\HPCHEM1\MSVOA_X\Data\VX080522\
 Data File : VX030445.D
 Acq On : 05 Aug 2022 22:02
 Operator : JC/MD
 Sample : N4066-03
 Misc : 5.0mL/MSVOA_X/WATER
 ALS Vial : 33 Sample Multiplier: 1

Instrument :
 MSVOA_X
 ClientSampleId :
 F5D94

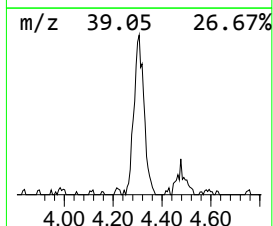
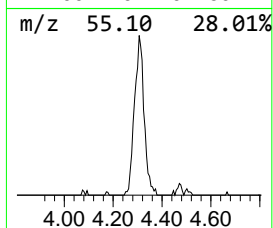
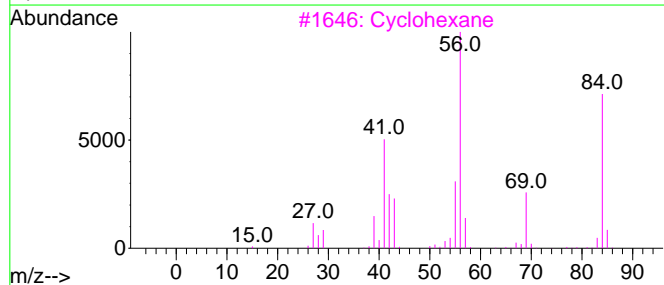
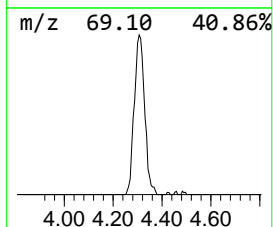
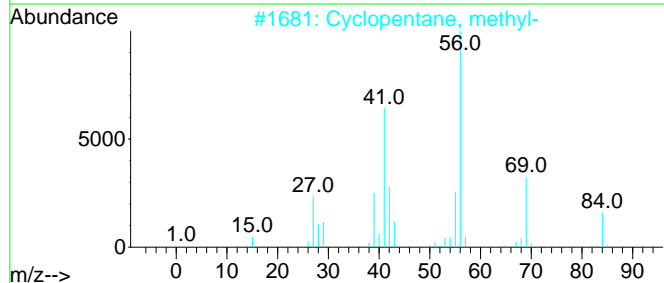
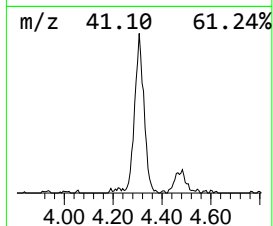
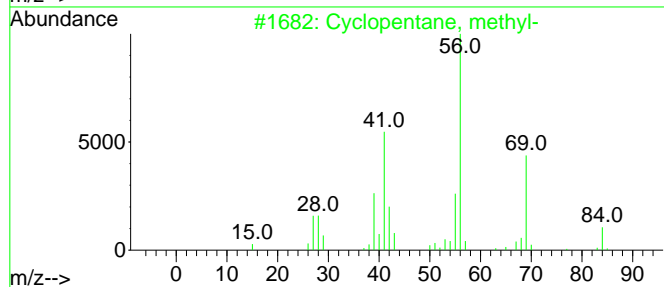
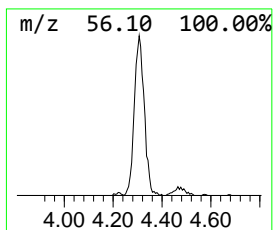
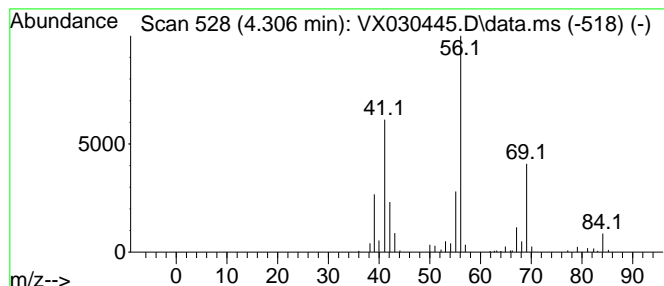
Quant Method : Z:\voasrv\HPCHEM1\MSVOA_X\Method\SFAMXML080422WMA.M
 Quant Title : VOC Analysis

TIC Library : C:\Database\NIST20.L
 TIC Integration Parameters: LSCINT.P

 Peak Number 3 (DEL) Alkane: Cyclic4.306 Concentration Rank 2

R.T.	EstConc	Area	Relative to ISTD	R.T.
4.306	8.97 ug/L	113939	1,4-Difluorobenzene	6.769

Hit#	of 5	Tentative ID	MW	MolForm	CAS#	Qual
1		Cyclopentane, methyl-	84	C6H12	000096-37-7	86
2		Cyclopentane, methyl-	84	C6H12	000096-37-7	80
3		Cyclohexane	84	C6H12	000110-82-7	72
4		Cyclopentane, methyl-	84	C6H12	000096-37-7	72
5		1H-Tetrazole, 5-methyl-	84	C2H4N4	004076-36-2	64



Data Path : Z:\voasrv\HPCHEM1\MSVOA_X\Data\VX080522\
Data File : VX030445.D
Acq On : 05 Aug 2022 22:02
Operator : JC/MD
Sample : N4066-03
Misc : 5.0mL/MSVOA_X/WATER
ALS Vial : 33 Sample Multiplier: 1

Instrument :
MSVOA_X
ClientSampleId :
F5D94

Quant Method : Z:\voasrv\HPCHEM1\MSVOA_X\Method\SFAMXML080422WMA.M
Quant Title : VOC Analysis

TIC Library : C:\Database\NIST20.L
TIC Integration Parameters: LSCINT.P

TIC Top Hit name	RT	EstConc	Units	Response	--Internal Standard--			
					#	RT	Resp	Conc
(DEL) Alkane: S...	1.746	7.2	ug/L	91280	1	6.769	635090	50.0
(DEL) Alkane: S...	2.782	3.2	ug/L	40723	1	6.769	635090	50.0
(DEL) Alkane: C...	4.306	9.0	ug/L	113939	1	6.769	635090	50.0