

Data Path : Z:\voasrv\HPCHEM1\MSVOA\_X\Data\VX080622\  
 Data File : VX030500.D  
 Acq On : 07 Aug 2022 06:00  
 Operator : JC/MD  
 Sample : VIBLK660  
 Misc : 5.0mL/MSVOA\_X/WATER  
 ALS Vial : 23 Sample Multiplier: 1

Instrument :  
 MSVOA\_X  
 ClientSampleId :  
 VIBLK660

Integration Parameters: LSCINT.P

Integrator: RTE  
 Smoothing : OFF Filtering: 5  
 Sampling : 1 Min Area: 0 % of largest Peak  
 Start Thrs: 0.2 Max Peaks: 100  
 Stop Thrs : 0 Peak Location: TOP

If leading or trailing edge < 100 prefer < Baseline drop else tangent >  
 Peak separation: 5

Method : Z:\voasrv\HPCHEM1\MSVOA\_X\Method\SFAMXML080422WMA.M  
 Title : VOC Analysis

Signal : TIC: VX030500.D\data.ms

peak #	R.T. min	first scan	max scan	last scan	PK TY	peak height	corr. area	corr. % max.	% of total
1	1.367	42	46	55	rVB	108932	112435	12.02%	1.569%
2	1.666	91	95	106	rVB	94883	114059	12.19%	1.591%
3	2.306	194	200	210	rVB	187725	284241	30.39%	3.966%
4	2.556	240	241	243	rVB	627	339	0.04%	0.005%
5	2.605	243	249	250	rBV4	1223	2041	0.22%	0.028%
6	2.684	261	262	264	rVB2	832	513	0.05%	0.007%
7	2.788	274	279	284	rBV3	3749	7064	0.76%	0.099%
8	2.946	299	305	314	rBV	10172	21674	2.32%	0.302%
9	3.221	347	350	351	rBV2	406	399	0.04%	0.006%
10	3.257	353	356	360	rVB	402	516	0.06%	0.007%
11	3.294	360	362	366	rBV	283	378	0.04%	0.005%
12	3.337	367	369	371	rVB	587	329	0.04%	0.005%
13	3.410	379	381	384	rVB	458	371	0.04%	0.005%
14	3.501	391	396	400	rBV2	416	838	0.09%	0.012%
15	3.812	446	447	449	rBV	453	332	0.04%	0.005%
16	4.093	491	493	495	rVB	610	390	0.04%	0.005%
17	4.288	524	525	530	rBV3	362	581	0.06%	0.008%
18	4.367	536	538	539	rBV	530	339	0.04%	0.005%
19	4.471	546	555	569	rBV	87988	268900	28.75%	3.751%
20	4.806	608	610	612	rBV3	486	531	0.06%	0.007%
21	4.879	619	622	624	rBV2	369	440	0.05%	0.006%
22	4.964	635	636	639	rVB	607	538	0.06%	0.008%
23	5.062	639	652	670	rBV	121270	384633	41.12%	5.366%
24	5.220	676	678	680	rBV2	968	828	0.09%	0.012%
25	5.275	684	687	690	rBV2	328	401	0.04%	0.006%
26	5.336	695	697	699	rBV	349	430	0.05%	0.006%
27	5.385	701	705	706	rBV2	835	789	0.08%	0.011%
28	5.763	766	767	769	rBV	453	367	0.04%	0.005%
29	5.976	789	802	815	rBV2	318045	935451	100.00%	13.051%
30	6.251	845	847	849	rVB2	530	397	0.04%	0.006%
31	6.342	860	862	863	rBV	548	346	0.04%	0.005%
32	6.586	899	902	903	rVB2	391	334	0.04%	0.005%
33	6.769	921	932	948	rBV	269169	644124	68.86%	8.986%
34	6.970	964	965	968	rBV2	369	414	0.04%	0.006%
35	7.123	982	990	998	rBV5	15244	41018	4.38%	0.572%
36	7.312	1011	1021	1036	rBV	197846	436563	46.67%	6.091%

Data Path : Z:\voasrv\HPCHEM1\MSVOA\_X\Data\VX080622\  
 Data File : VX030500.D  
 Acq On : 07 Aug 2022 06:00  
 Operator : JC/MD  
 Sample : VIBLK660  
 Misc : 5.0mL/MSVOA\_X/WATER  
 ALS Vial : 23 Sample Multiplier: 1

Instrument :  
 MSVOA\_X  
 ClientSampleId :  
 VIBLK660

Integration Parameters: LSCINT.P

Integrator: RTE  
 Smoothing : OFF  
 Sampling : 1  
 Start Thrs: 0.2  
 Stop Thrs : 0

Filtering: 5  
 Min Area: 0 % of largest Peak  
 Max Peaks: 100  
 Peak Location: TOP

If leading or trailing edge < 100 prefer < Baseline drop else tangent >  
 Peak separation: 5

Method : Z:\voasrv\HPCHEM1\MSVOA\_X\Method\SFAMXML080422WMA.M  
 Title : VOC Analysis

37	7.488	1044	1050	1052	rBV3	724	1228	0.13%	0.017%
38	7.689	1081	1083	1084	rBV	477	362	0.04%	0.005%
39	7.805	1100	1102	1104	rVB2	585	379	0.04%	0.005%
40	7.836	1104	1107	1108	rBV2	595	441	0.05%	0.006%
41	8.183	1160	1164	1166	rBV2	365	412	0.04%	0.006%
42	8.330	1181	1188	1201	rBV	112399	191005	20.42%	2.665%
43	8.482	1211	1213	1216	rVV	343	321	0.03%	0.004%
44	8.586	1228	1230	1234	rBV3	581	735	0.08%	0.010%
45	8.653	1234	1241	1254	rBV	430501	674190	72.07%	9.406%
46	8.951	1285	1290	1302	rBV	83031	124981	13.36%	1.744%
47	9.122	1316	1318	1320	rVB2	490	339	0.04%	0.005%
48	9.275	1339	1343	1350	rVB4	8761	13259	1.42%	0.185%
49	9.390	1356	1362	1378	rBV	387251	565740	60.48%	7.893%
50	9.701	1409	1413	1423	rVB2	4649	7363	0.79%	0.103%
51	9.787	1425	1427	1429	rBV2	425	327	0.03%	0.005%
52	9.805	1429	1430	1434	rVB2	374	376	0.04%	0.005%
53	9.848	1436	1437	1443	rBV2	347	484	0.05%	0.007%
54	9.921	1447	1449	1451	rBV	384	356	0.04%	0.005%
55	9.951	1453	1454	1456	rBV	493	414	0.04%	0.006%
56	10.055	1465	1471	1485	rBV	522404	724969	77.50%	10.114%
57	10.268	1504	1506	1507	rBV	350	322	0.03%	0.004%
58	10.506	1543	1545	1550	rVB2	437	500	0.05%	0.007%
59	10.762	1586	1587	1589	rVB	535	333	0.04%	0.005%
60	10.805	1589	1594	1595	rBV2	440	499	0.05%	0.007%
61	10.957	1617	1619	1623	rVB2	665	702	0.08%	0.010%
62	10.994	1623	1625	1627	rBV	593	519	0.06%	0.007%
63	11.104	1642	1643	1648	rBV3	444	607	0.06%	0.008%
64	11.195	1652	1658	1667	rBV	353694	439324	46.96%	6.129%
65	11.360	1684	1685	1688	rVB2	397	310	0.03%	0.004%
66	11.408	1691	1693	1697	rBV3	227	352	0.04%	0.005%
67	11.481	1703	1705	1709	rVB3	678	615	0.07%	0.009%
68	11.542	1712	1715	1716	rBV	575	533	0.06%	0.007%
69	11.628	1726	1729	1730	rBV	390	453	0.05%	0.006%
70	11.707	1740	1742	1744	rBV2	390	344	0.04%	0.005%
71	11.951	1780	1782	1784	rVB2	499	436	0.05%	0.006%
72	12.024	1789	1794	1805	rVB	485373	598730	64.00%	8.353%
73	12.146	1812	1814	1815	rBV2	432	411	0.04%	0.006%
74	12.323	1837	1843	1851	rBV	430721	539001	57.62%	7.520%
75	12.420	1857	1859	1861	rBV2	570	522	0.06%	0.007%
76	12.469	1865	1867	1869	rVV	620	537	0.06%	0.007%

Data Path : Z:\voasrv\HPCHEM1\MSVOA\_X\Data\VX080622\  
 Data File : VX030500.D  
 Acq On : 07 Aug 2022 06:00  
 Operator : JC/MD  
 Sample : VIBLK660  
 Misc : 5.0mL/MSVOA\_X/WATER  
 ALS Vial : 23 Sample Multiplier: 1

Instrument :  
 MSVOA\_X  
 ClientSampleId :  
 VIBLK660

Integration Parameters: LSCINT.P

Integrator: RTE  
 Smoothing : OFF  
 Sampling : 1  
 Start Thrs : 0.2  
 Stop Thrs : 0

Filtering: 5  
 Min Area: 0 % of largest Peak  
 Max Peaks: 100  
 Peak Location: TOP

If leading or trailing edge < 100 prefer < Baseline drop else tangent >  
 Peak separation: 5

Method : Z:\voasrv\HPCHEM1\MSVOA\_X\Method\SFAMXML080422WMA.M  
 Title : VOC Analysis

77	12.494	1869	1871	1874	rVB	487	445	0.05%	0.006%
78	12.518	1874	1875	1878	rBV	479	320	0.03%	0.004%
79	12.670	1898	1900	1902	rBV3	345	350	0.04%	0.005%
80	12.756	1908	1914	1916	rBV	424	565	0.06%	0.008%
81	12.780	1916	1918	1921	rVB	711	643	0.07%	0.009%
82	12.829	1923	1926	1927	rVB2	323	329	0.04%	0.005%
83	12.859	1929	1931	1934	rVB	484	368	0.04%	0.005%
84	13.067	1961	1965	1967	rVV2	616	689	0.07%	0.010%
85	13.231	1991	1992	1996	rVB2	592	620	0.07%	0.009%
86	13.298	2000	2003	2006	rBV2	482	830	0.09%	0.012%
87	13.396	2016	2019	2020	rBV2	429	348	0.04%	0.005%
88	13.438	2025	2026	2029	rVB	403	329	0.04%	0.005%
89	13.469	2029	2031	2034	rBV2	454	524	0.06%	0.007%
90	13.853	2092	2094	2097	rBV2	501	544	0.06%	0.008%
91	13.926	2104	2106	2108	rBV2	537	493	0.05%	0.007%
92	14.566	2209	2211	2213	rVB2	547	366	0.04%	0.005%
93	14.767	2242	2244	2245	rBV	525	317	0.03%	0.004%
94	15.566	2373	2375	2376	rVB2	901	471	0.05%	0.007%
95	15.786	2410	2411	2414	rVB2	1087	577	0.06%	0.008%
96	15.853	2420	2422	2423	rBV	690	483	0.05%	0.007%
97	16.151	2469	2471	2475	rBV3	525	767	0.08%	0.011%
98	16.218	2480	2482	2484	rVB2	916	637	0.07%	0.009%
99	16.389	2509	2510	2513	rBV2	504	349	0.04%	0.005%
100	16.700	2559	2561	2564	rVB	565	401	0.04%	0.006%

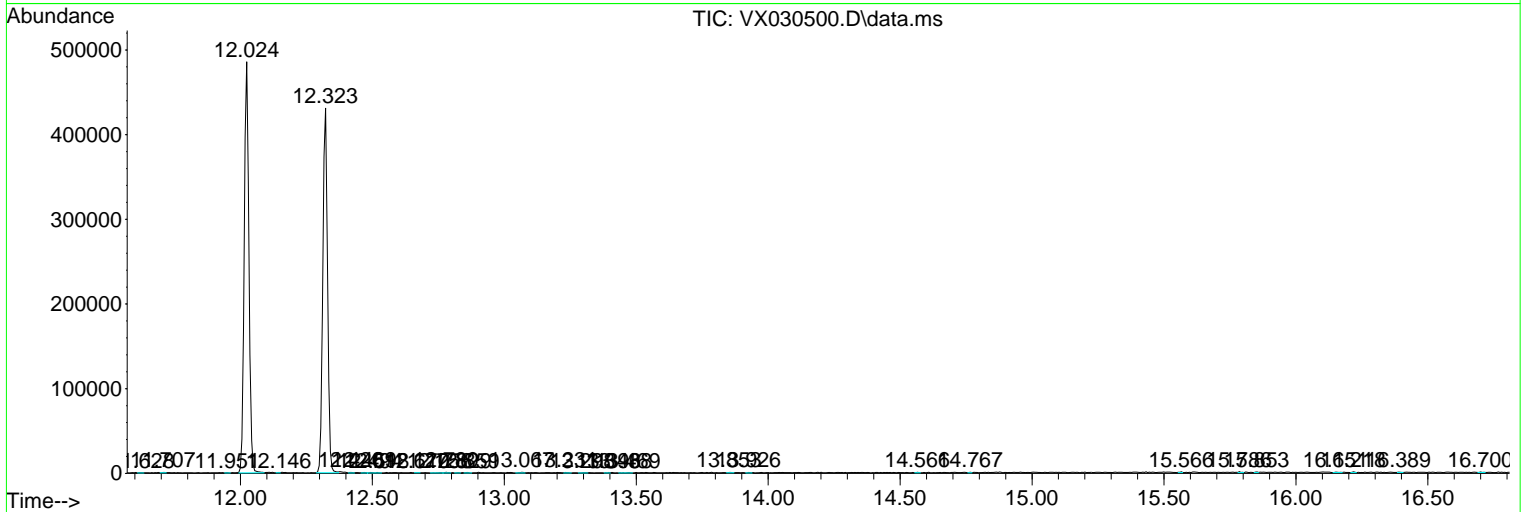
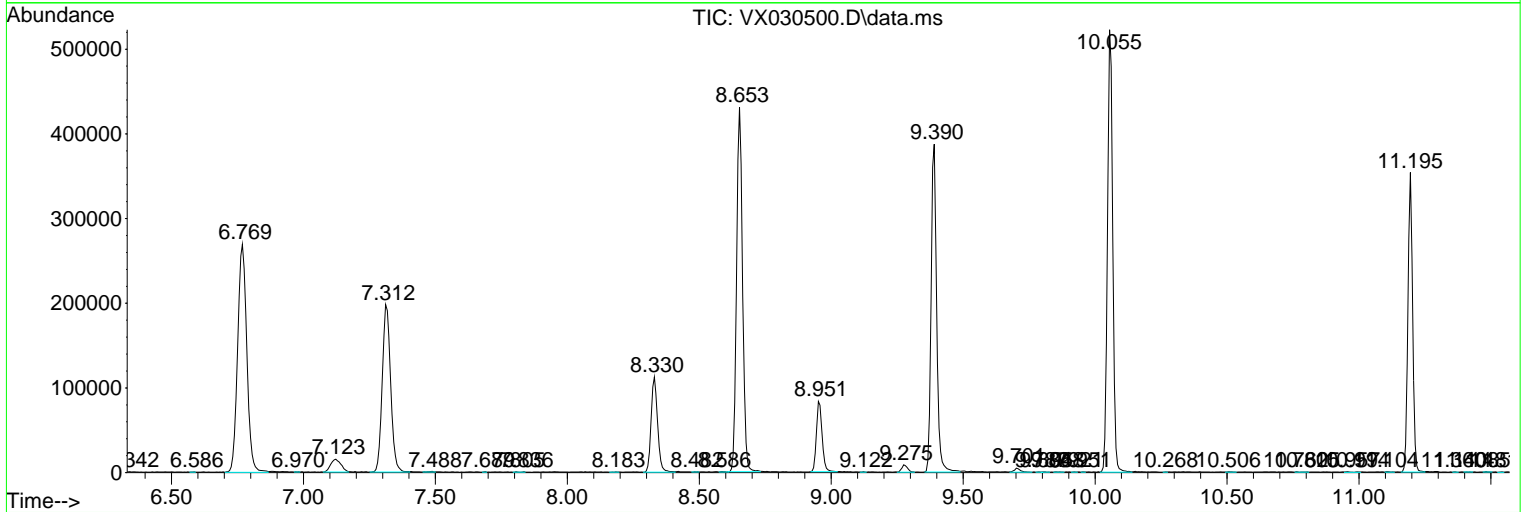
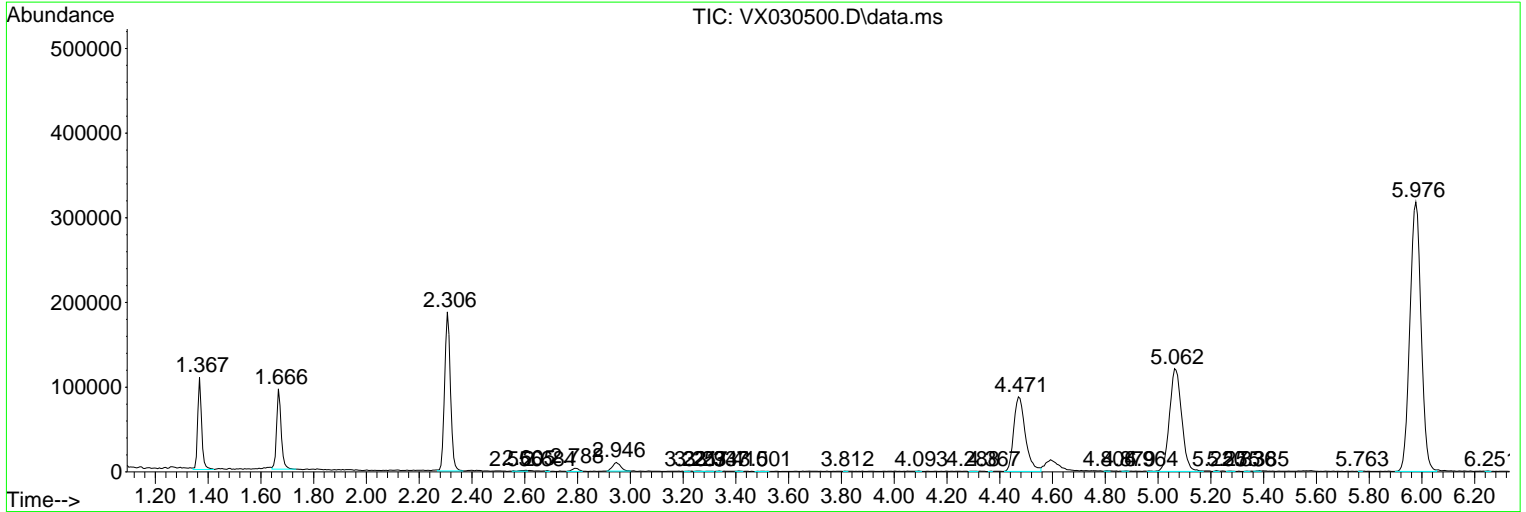
Sum of corrected areas: 7167839

Data Path : Z:\voasrv\HPCHEM1\MSVOA\_X\Data\VX080622\  
 Data File : VX030500.D  
 Acq On : 07 Aug 2022 06:00  
 Operator : JC/MD  
 Sample : VIBLK660  
 Misc : 5.0mL/MSVOA\_X/WATER  
 ALS Vial : 23 Sample Multiplier: 1

Instrument :  
 MSVOA\_X  
 ClientSampleId :  
 VIBLK660

Quant Method : Z:\voasrv\HPCHEM1\MSVOA\_X\Method\SFAMXLM080422WMA.M  
 Quant Title : VOC Analysis

TIC Library : C:\Database\NIST20.L  
 TIC Integration Parameters: LSCINT.P



Data Path : Z:\voasrv\HPCHEM1\MSVOA\_X\Data\VX080622\  
Data File : VX030500.D  
Acq On : 07 Aug 2022 06:00  
Operator : JC/MD  
Sample : VIBLK660  
Misc : 5.0mL/MSVOA\_X/WATER  
ALS Vial : 23 Sample Multiplier: 1

**Instrument :**  
MSVOA\_X  
**ClientSampleId :**  
VIBLK660

Quant Method : Z:\voasrv\HPCHEM1\MSVOA\_X\Method\SFAMXML080422WMA.M  
Quant Title : VOC Analysis

TIC Library : C:\Database\NIST20.L  
TIC Integration Parameters: LSCINT.P

No Library Search Compounds Detected

\*\*\*\*\*

Data Path : Z:\voasrv\HPCHEM1\MSVOA\_X\Data\VX080622\  
Data File : VX030500.D  
Acq On : 07 Aug 2022 06:00  
Operator : JC/MD  
Sample : VIBLK660  
Misc : 5.0mL/MSVOA\_X/WATER  
ALS Vial : 23 Sample Multiplier: 1

Instrument :  
MSVOA\_X  
ClientSampleId :  
VIBLK660

Quant Method : Z:\voasrv\HPCHEM1\MSVOA\_X\Method\SFAMXML080422WMA.M  
Quant Title : VOC Analysis

TIC Library : C:\Database\NIST20.L  
TIC Integration Parameters: LSCINT.P

TIC Top Hit name	RT	EstConc	Units	Response	--Internal Standard--			
					#	RT	Resp	Conc

---