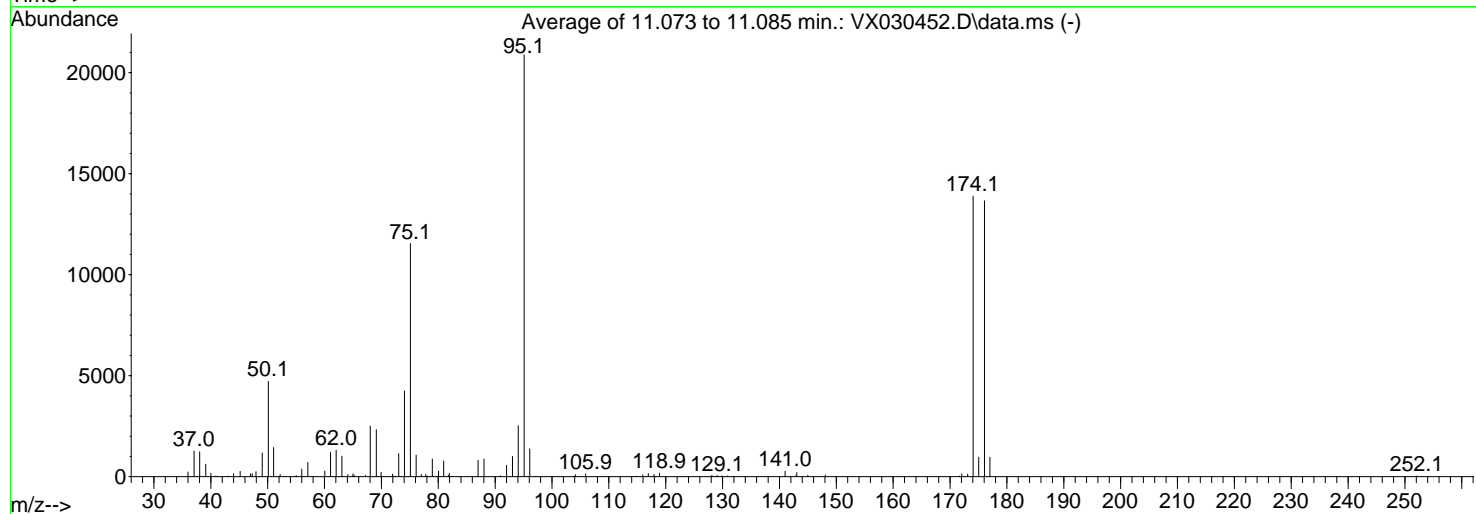
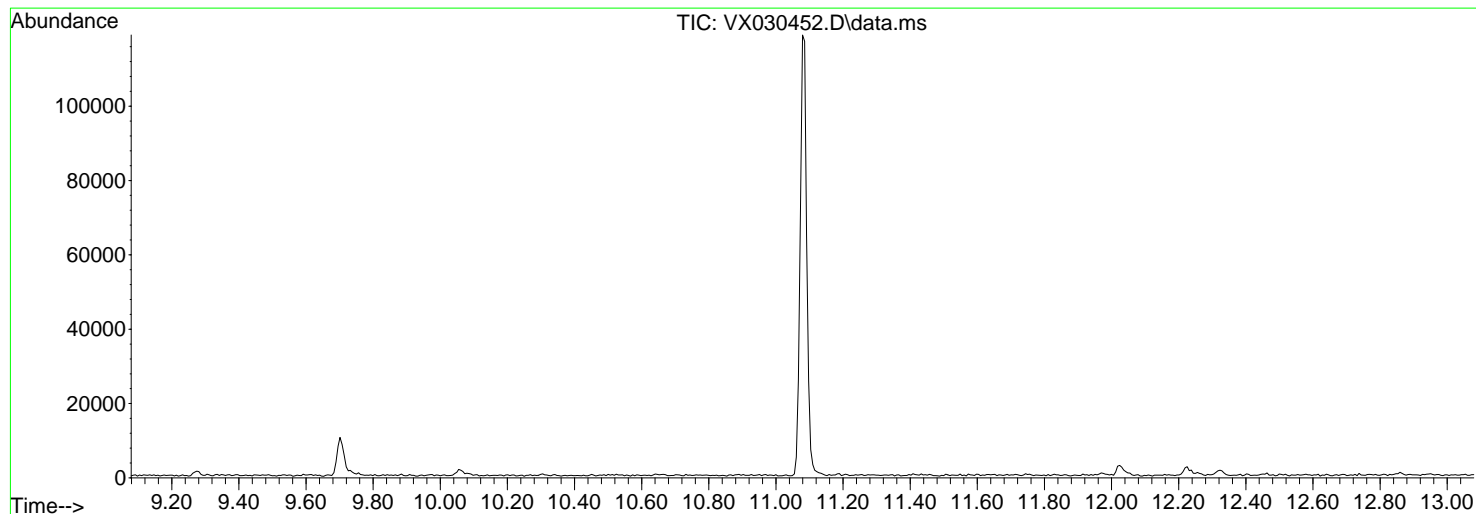


Data Path : Z:\voasrv\HPCHEM1\MSVOA\_X\Data\VX080622\  
 Data File : VX030452.D  
 Acq On : 06 Aug 2022 09:39  
 Operator : JC/MD  
 Sample : BFB672  
 Misc : 5.0mL/MSVOA\_X/WATER  
 ALS Vial : 1 Sample Multiplier: 1

Instrument :  
 MSVOA\_X  
 ClientSampleId :  
 BFB672

Integration File: LSCINT.P

Method : Z:\voasrv\HPCHEM1\MSVOA\_X\Method\SFAMXLM080422WMA.M  
 Title : VOC Analysis  
 Last Update : Sat Aug 06 02:08:42 2022



AutoFind: Scans 1638, 1639, 1640; Background Corrected with Scan 1633

Target Mass	Rel. to Mass	Lower Limit%	Upper Limit%	Rel. Abn%	Raw Abn	Result Pass/Fail
50	95	15	40	22.6	4715	PASS
75	95	30	80	55.3	11543	PASS
95	95	100	100	100.0	20884	PASS
96	95	5	9	6.6	1375	PASS
173	174	0.00	2	0.9	129	PASS
174	95	50	120	66.5	13885	PASS
175	174	5	9	6.9	957	PASS
176	174	95	101	98.4	13659	PASS
177	176	5	9	7.0	960	PASS

m/z	Abundance
40.00	239.0
44.00	334.0

**Instrument :**  
MSVOA\_X  
**ClientSampleId :**  
BFB672

m/z	Abundance
36.10	92.0
37.10	1115.0
38.00	850.0
39.10	545.0
40.00	389.0
44.00	541.0
45.20	161.0
47.30	194.0
47.90	242.0
49.10	936.0
50.10	3512.0
51.10	889.0
52.20	105.0
55.00	116.0
56.00	254.0
57.10	697.0
60.10	337.0
61.00	813.0
62.10	877.0
63.00	833.0
64.00	75.0
65.00	155.0
68.00	1813.0
69.10	1553.0
69.90	165.0
72.00	127.0
73.00	1011.0
74.10	3010.0
75.10	8290.0
76.10	789.0
77.10	70.0
77.80	135.0
79.00	597.0
80.10	131.0
80.90	650.0
81.80	158.0
86.90	612.0
88.00	817.0
90.90	58.0
92.00	317.0
93.00	864.0
94.20	1643.0
95.10	15219.0
96.10	1105.0
103.80	56.0
105.90	82.0
116.10	95.0
116.90	131.0
117.90	175.0
119.00	142.0
129.10	99.0
141.10	223.0
142.90	169.0
143.10	171.0
171.70	106.0
173.20	93.0
174.00	8233.0
175.10	644.0
176.00	8268.0
177.00	663.0
252.10	83.0

**Instrument :**  
MSVOA\_X  
**ClientSampleId :**  
BFB672

m/z	Abundance
35.90	205.0
37.00	1424.0
38.10	1591.0
39.10	655.0
40.10	479.0
44.10	438.0
45.10	253.0
47.00	425.0
48.00	293.0
49.00	1491.0
50.10	5518.0
51.10	1743.0
52.20	152.0
55.00	62.0
56.00	473.0
56.90	645.0
60.00	277.0
61.00	1584.0
62.10	1769.0
63.10	1199.0
64.10	155.0
65.00	249.0
67.20	126.0
68.00	3040.0
69.10	2636.0
70.00	361.0
71.90	119.0
73.10	1127.0
74.00	4999.0
75.10	13028.0
76.10	1397.0
77.10	132.0
77.80	66.0
78.10	67.0
78.90	1162.0
80.00	376.0
81.00	840.0
82.00	306.0
87.00	871.0
88.10	928.0
92.00	777.0
93.00	1225.0
94.00	2777.0
95.10	24720.0
96.10	1496.0
104.10	157.0
105.90	236.0
114.80	63.0
115.90	82.0
117.00	193.0
118.00	79.0
118.90	166.0
128.10	86.0
129.00	59.0
140.90	262.0
143.00	255.0
145.10	119.0
148.20	105.0
172.00	198.0
173.10	150.0
174.10	16071.0
175.00	873.0
176.10	15357.0
177.00	978.0

**Instrument :**  
MSVOA\_X  
**ClientSampleId :**  
BFB672

m/z	Abundance
36.00	395.0
37.00	1254.0
38.10	1254.0
39.10	662.0
40.00	347.0
40.90	83.0
43.00	90.0
44.10	450.0
45.10	381.0
47.30	238.0
47.90	211.0
49.00	1084.0
50.10	5114.0
51.00	1689.0
52.10	57.0
56.00	388.0
57.10	773.0
60.00	218.0
61.10	1224.0
62.00	1269.0
63.00	1006.0
64.20	109.0
65.20	250.0
67.20	66.0
68.10	2652.0
69.10	2768.0
70.00	128.0
71.90	109.0
72.20	97.0
73.10	1276.0
74.00	4740.0
75.10	13311.0
76.10	1014.0
76.90	140.0
77.80	130.0
79.00	844.0
80.10	296.0
80.90	833.0
81.90	191.0
87.10	954.0
88.00	863.0
91.00	71.0
92.00	595.0
93.10	916.0
94.10	3139.0
95.10	22712.0
96.10	1524.0
97.20	53.0
104.10	138.0
105.80	79.0
115.90	75.0
117.00	123.0
118.00	82.0
118.80	193.0
128.10	107.0
129.90	115.0
130.90	101.0
141.00	331.0
143.00	178.0
144.90	107.0
148.00	145.0
172.10	231.0
173.00	144.0
174.10	17352.0
175.00	1354.0
176.10	17352.0
177.00	1239.0

Instrument :  
MSVOA\_X  
ClientSampleId :  
BFB672