

Data Path : Z:\voasrv\HPCHEM1\MSVOA_X\Data\VX080625\
 Data File : VX047239.D
 Acq On : 06 Aug 2025 11:31
 Operator : JC/MD
 Sample : VX0806MBL01
 Misc : 5.00g/10mL/100uL/5.00mL/MSVOA_X/MEOH
 ALS Vial : 3 Sample Multiplier: 1

Instrument :
 MSVOA_X
 ClientSampleId :
 VX0806MBL01

Quant Time: Aug 07 01:13:52 2025
 Quant Method : Z:\voasrv\HPCHEM1\MSVOA_X\Method\82X072125W.M
 Quant Title : SW846 8260
 QLast Update : Tue Jul 22 03:59:51 2025
 Response via : Initial Calibration

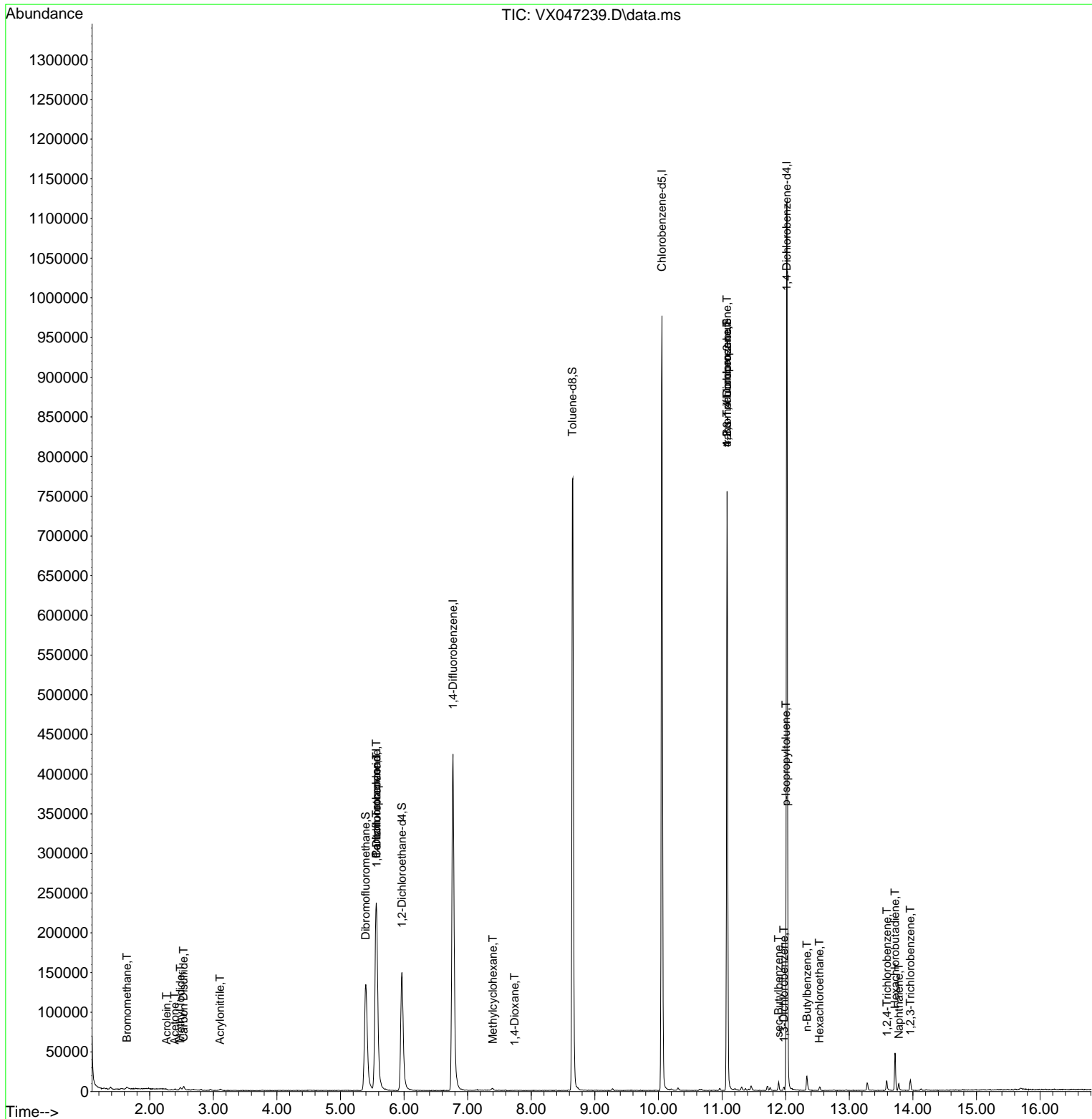
Compound	R.T.	QIon	Response	Conc Units	Dev(Min)
Internal Standards					
1) Pentafluorobenzene	5.562	168	237933	50.000 ug/l	0.00
34) 1,4-Difluorobenzene	6.769	114	448379	50.000 ug/l	0.00
63) Chlorobenzene-d5	10.055	117	438888	50.000 ug/l	0.00
72) 1,4-Dichlorobenzene-d4	12.018	152	220751	50.000 ug/l	0.00
System Monitoring Compounds					
33) 1,2-Dichloroethane-d4	5.964	65	155927	52.609 ug/l	0.00
Spiked Amount	50.000	Range 78 - 117	Recovery	= 105.220%	
35) Dibromofluoromethane	5.397	113	130164	47.017 ug/l	0.00
Spiked Amount	50.000	Range 75 - 124	Recovery	= 94.040%	
50) Toluene-d8	8.647	98	481117	53.663 ug/l	0.00
Spiked Amount	50.000	Range 92 - 112	Recovery	= 107.320%	
62) 4-Bromofluorobenzene	11.079	95	201444	52.138 ug/l	0.00
Spiked Amount	50.000	Range 83 - 123	Recovery	= 104.280%	
Target Compounds					
					Qvalue
5) Bromomethane	1.642	94	1053	0.577 ug/l	96
10) Methyl Iodide	2.483	142	5079	1.651 ug/l	93
11) Tert butyl alcohol	2.947	59	57	Below Cal #	72
13) Acrolein	2.264	56	156	0.244 ug/l #	1
15) Acrylonitrile	3.105	53	622	0.440 ug/l #	57
16) Acetone	2.392	43	2430	2.047 ug/l #	85
17) Carbon Disulfide	2.532	76	5145	0.595 ug/l	98
36) 1,1-Dichloropropene	5.568	75	20650	4.376 ug/l #	49
38) Carbon Tetrachloride	5.562	117	25202	5.004 ug/l #	17
39) Methylcyclohexane	7.397	83	1312	0.223 ug/l #	82
49) 1,4-Dioxane	7.738	88	83	1.976 ug/l #	1
76) 1,2,3-Trichloropropane	11.079	75	104750	25.636 ug/l #	35
81) trans-1,4-Dichloro-2-b...	11.079	75	104750	66.049 ug/l #	8
85) sec-Butylbenzene	11.890	105	5240	0.290 ug/l	100
86) p-Isopropyltoluene	12.006	119	4937	0.330 ug/l #	82
87) 1,3-Dichlorobenzene	11.969	146	1606	0.202 ug/l	95
89) n-Butylbenzene	12.335	91	7696	0.548 ug/l	92
90) Hexachloroethane	12.530	117	812	0.303 ug/l	98
93) 1,2,4-Trichlorobenzene	13.591	180	3366	0.672 ug/l	91
94) Hexachlorobutadiene	13.719	225	6375	3.740 ug/l	96
95) Naphthalene	13.780	128	6674	0.454 ug/l #	91
96) 1,2,3-Trichlorobenzene	13.963	180	3458	0.716 ug/l	97

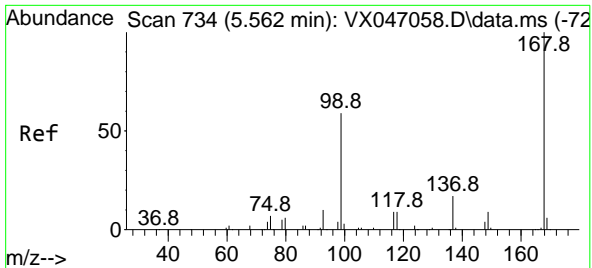
(#) = qualifier out of range (m) = manual integration (+) = signals summed

Data Path : Z:\voasrv\HPCHEM1\MSVOA_X\Data\VX080625\
 Data File : VX047239.D
 Acq On : 06 Aug 2025 11:31
 Operator : JC/MD
 Sample : VX0806MBL01
 Misc : 5.00g/10mL/100uL/5.00mL/MSVOA_X/MEOH
 ALS Vial : 3 Sample Multiplier: 1

Instrument :
 MSVOA_X
 ClientSampleId :
 VX0806MBL01

Quant Time: Aug 07 01:13:52 2025
 Quant Method : Z:\voasrv\HPCHEM1\MSVOA_X\Method\82X072125W.M
 Quant Title : SW846 8260
 QLast Update : Tue Jul 22 03:59:51 2025
 Response via : Initial Calibration

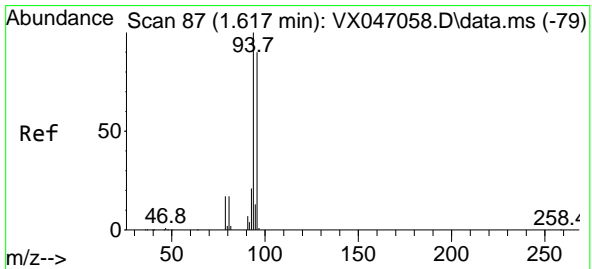
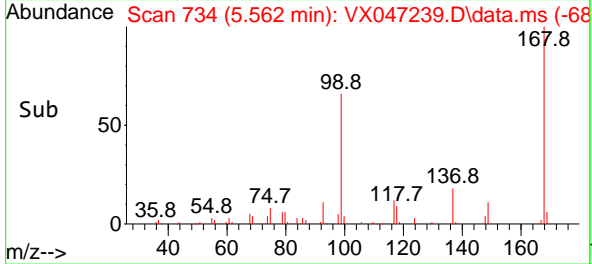
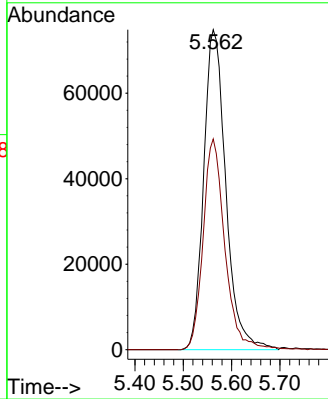
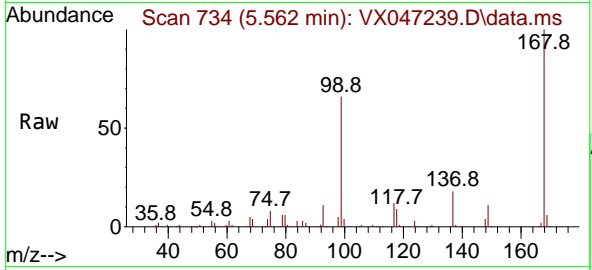




#1
 Pentafluorobenzene
 Concen: 50.000 ug/l
 RT: 5.562 min Scan# 71
 Delta R.T. 0.000 min
 Lab File: VX047239.D
 Acq: 06 Aug 2025 11:31

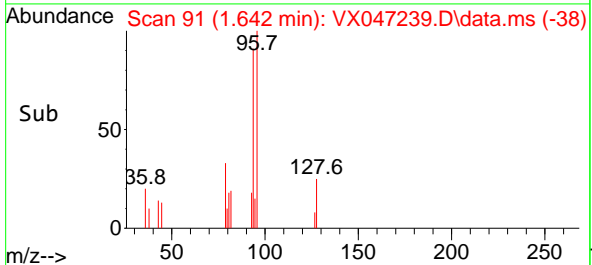
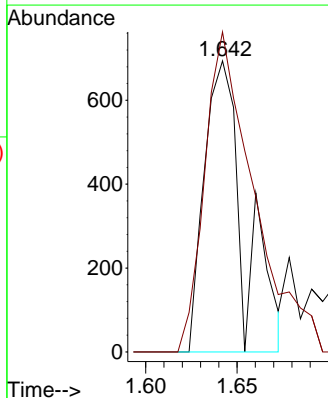
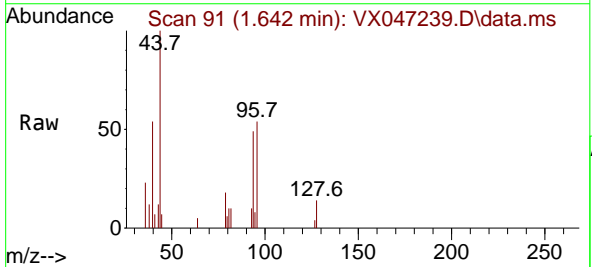
Instrument :
 MSVOA_X
 ClientSampleId :
 VX0806MBL01

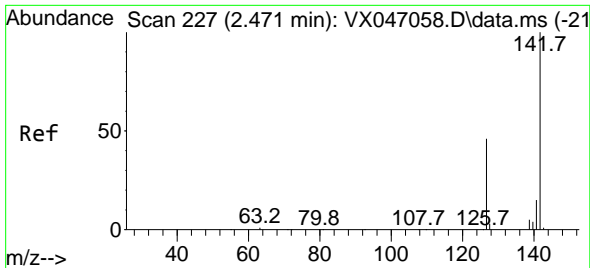
Tgt Ion:168 Resp: 237933
 Ion Ratio Lower Upper
 168 100
 99 65.8 48.0 72.0



#5
 Bromomethane
 Concen: 0.577 ug/l
 RT: 1.642 min Scan# 91
 Delta R.T. 0.025 min
 Lab File: VX047239.D
 Acq: 06 Aug 2025 11:31

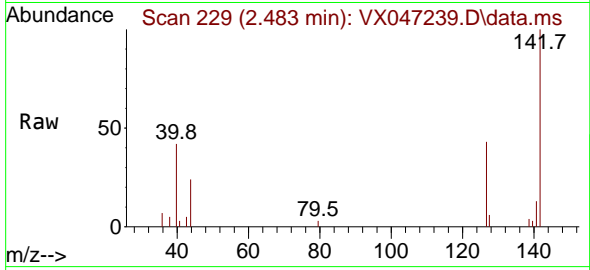
Tgt Ion: 94 Resp: 1053
 Ion Ratio Lower Upper
 94 100
 96 94.3 72.3 108.5



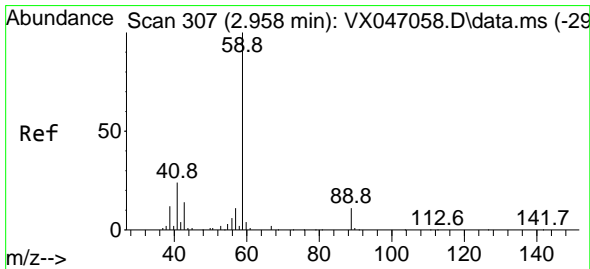
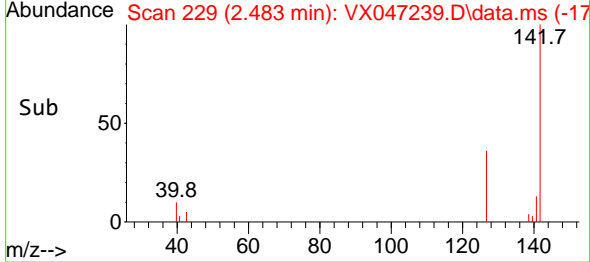
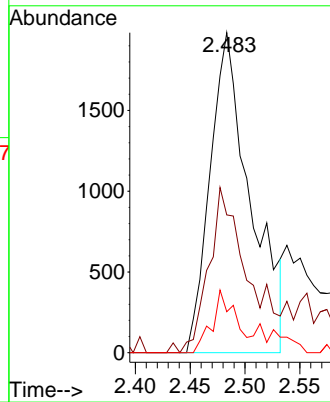


#10
Methyl Iodide
Concen: 1.651 ug/l
RT: 2.483 min Scan# 21
Delta R.T. 0.013 min
Lab File: VX047239.D
Acq: 06 Aug 2025 11:31

Instrument : MSVOA_X
Client SampleId : VX0806MBL01

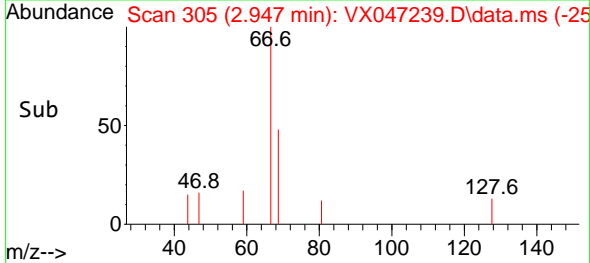
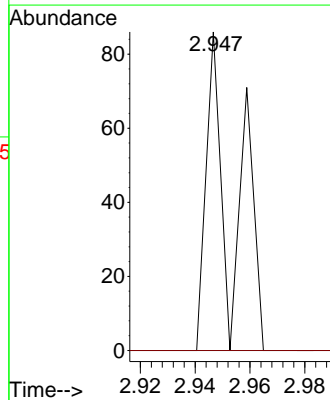
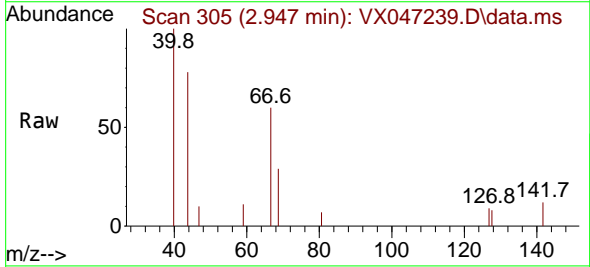


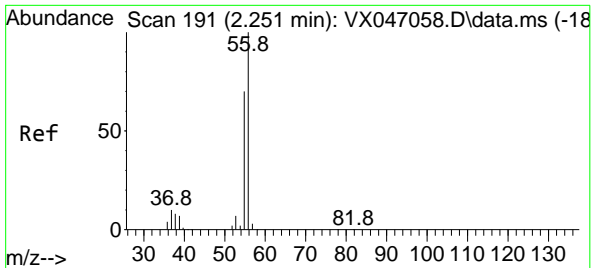
Tgt Ion:142 Resp: 5079
Ion Ratio Lower Upper
142 100
127 50.1 36.6 54.8
141 11.1 10.9 16.3



#11
Tert butyl alcohol
Concen: Below Cal
RT: 2.947 min Scan# 305
Delta R.T. -0.011 min
Lab File: VX047239.D
Acq: 06 Aug 2025 11:31

Tgt Ion: 59 Resp: 57
Ion Ratio Lower Upper
59 100
57 0.0 8.5 12.7#

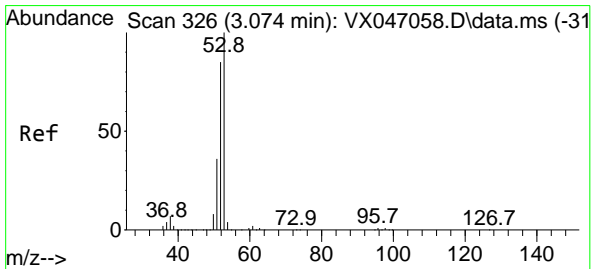
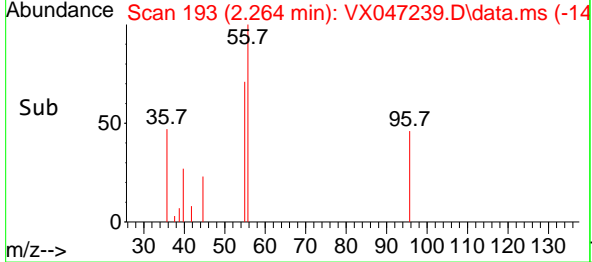
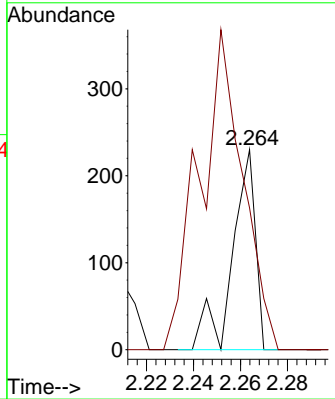
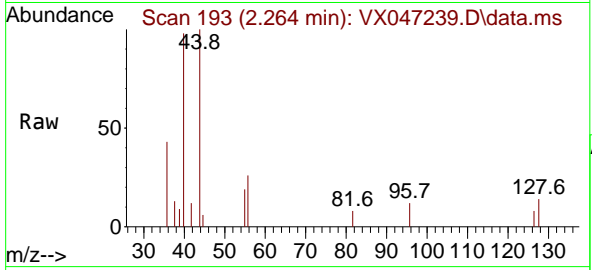




#13
 Acrolein
 Concen: 0.244 ug/l
 RT: 2.264 min Scan# 14
 Delta R.T. 0.013 min
 Lab File: VX047239.D
 Acq: 06 Aug 2025 11:31

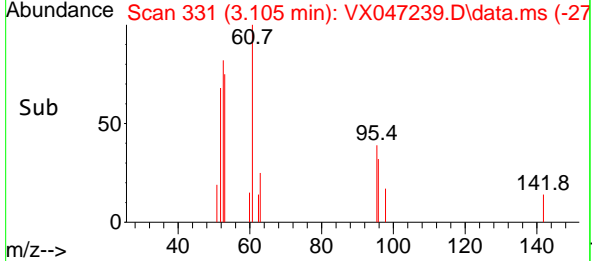
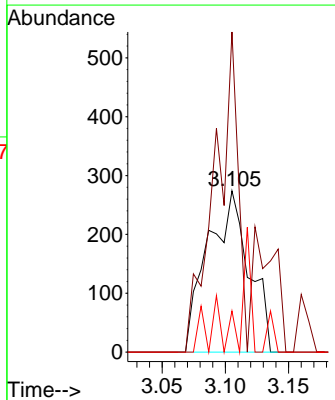
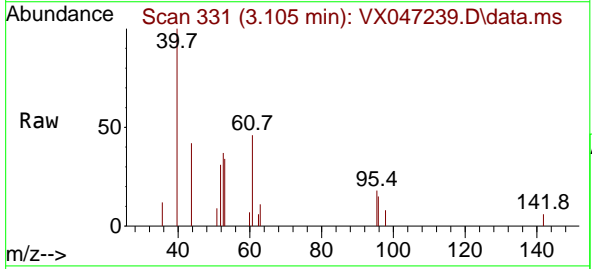
Instrument : MSVOA_X
 ClientSampleId : VX0806MBL01

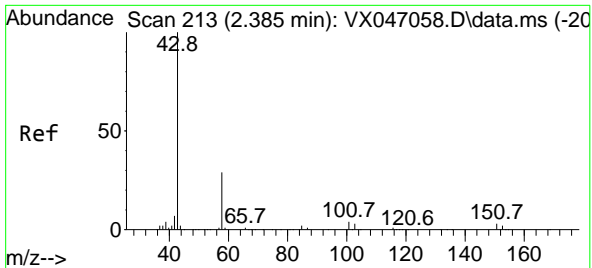
Tgt Ion: 56 Resp: 156
 Ion Ratio Lower Upper
 56 100
 55 300.6 55.7 83.5#



#15
 Acrylonitrile
 Concen: 0.440 ug/l
 RT: 3.105 min Scan# 331
 Delta R.T. 0.031 min
 Lab File: VX047239.D
 Acq: 06 Aug 2025 11:31

Tgt Ion: 53 Resp: 622
 Ion Ratio Lower Upper
 53 100
 52 40.2 65.7 98.5#
 51 16.6 28.8 43.2#

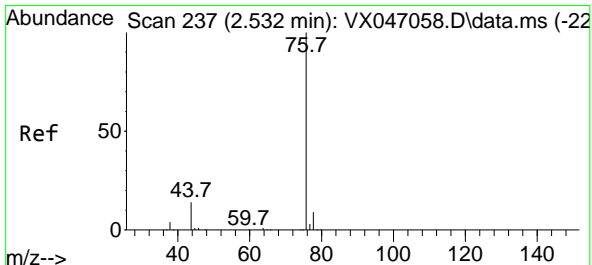
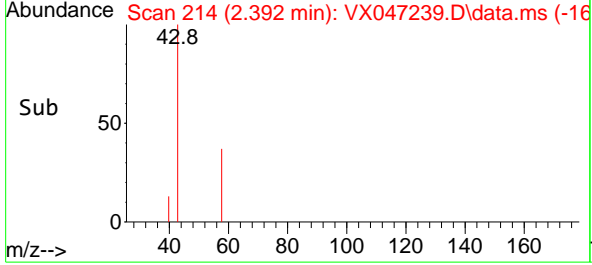
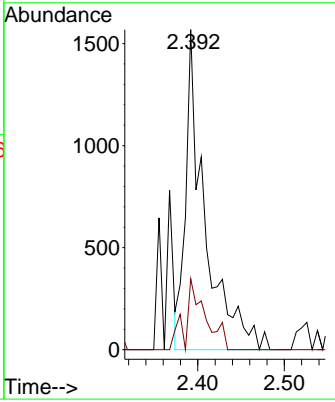
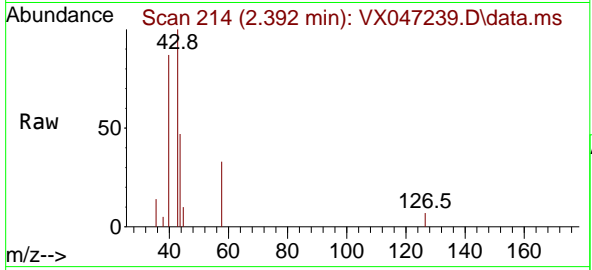




#16
 Acetone
 Concen: 2.047 ug/l
 RT: 2.392 min Scan# 213
 Delta R.T. 0.007 min
 Lab File: VX047239.D
 Acq: 06 Aug 2025 11:31

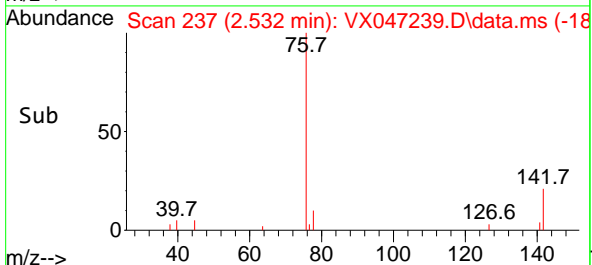
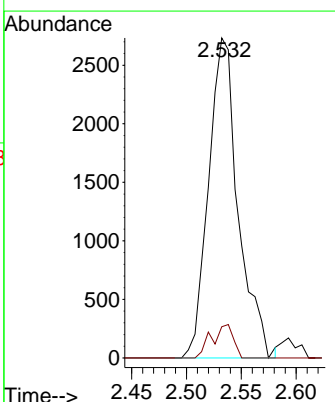
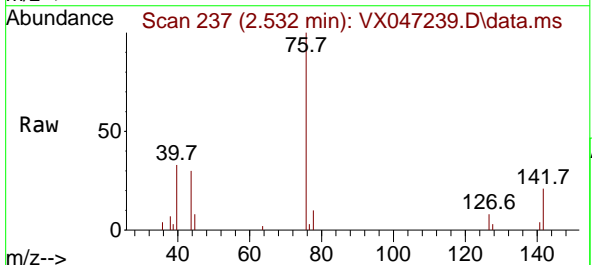
Instrument : MSVOA_X
 ClientSampleId : VX0806MBL01

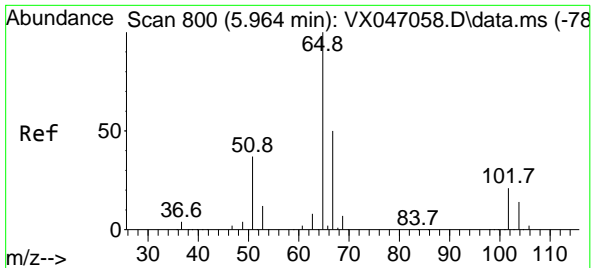
Tgt Ion: 43 Resp: 2430
 Ion Ratio Lower Upper
 43 100
 58 22.1 24.0 36.0#



#17
 Carbon Disulfide
 Concen: 0.595 ug/l
 RT: 2.532 min Scan# 237
 Delta R.T. 0.000 min
 Lab File: VX047239.D
 Acq: 06 Aug 2025 11:31

Tgt Ion: 76 Resp: 5145
 Ion Ratio Lower Upper
 76 100
 78 9.5 7.0 10.4

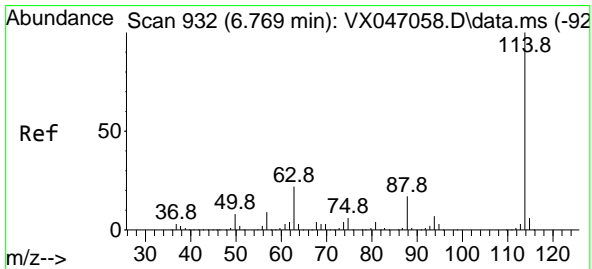
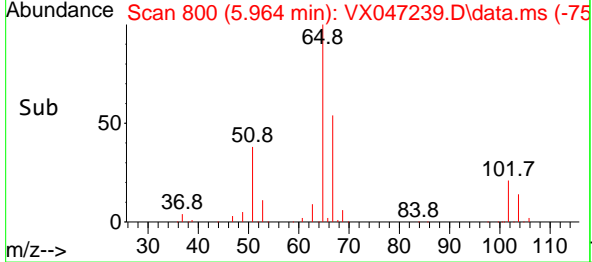
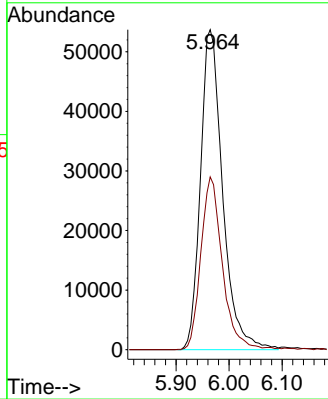
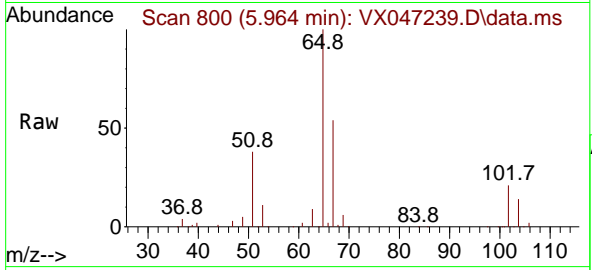




#33
 1,2-Dichloroethane-d4
 Concen: 52.609 ug/l
 RT: 5.964 min Scan# 800
 Delta R.T. 0.000 min
 Lab File: VX047239.D
 Acq: 06 Aug 2025 11:31

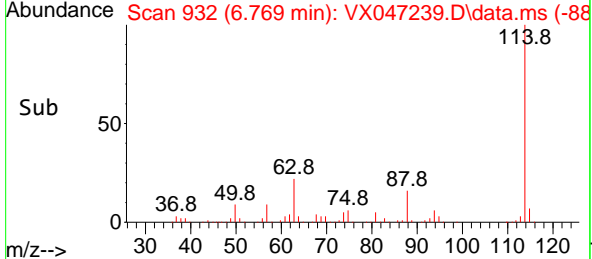
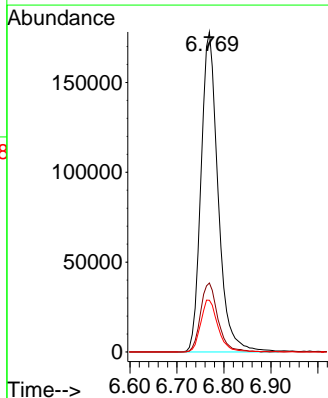
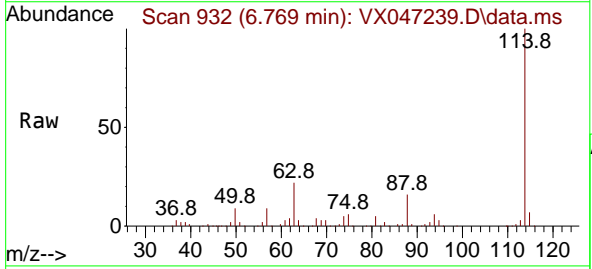
Instrument :
 MSVOA_X
 ClientSampleId :
 VX0806MBL01

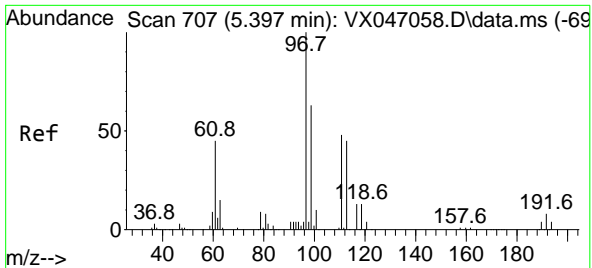
Tgt Ion: 65 Resp: 155927
 Ion Ratio Lower Upper
 65 100
 67 52.4 0.0 104.8



#34
 1,4-Difluorobenzene
 Concen: 50.000 ug/l
 RT: 6.769 min Scan# 932
 Delta R.T. 0.000 min
 Lab File: VX047239.D
 Acq: 06 Aug 2025 11:31

Tgt Ion: 114 Resp: 448379
 Ion Ratio Lower Upper
 114 100
 63 21.6 0.0 43.2
 88 16.2 0.0 33.8



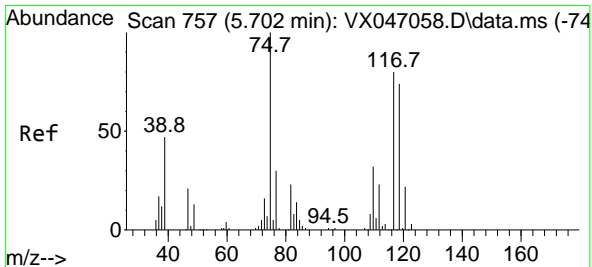
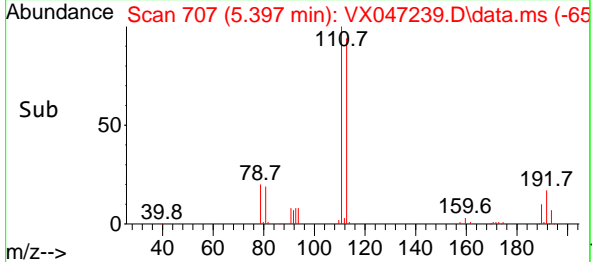
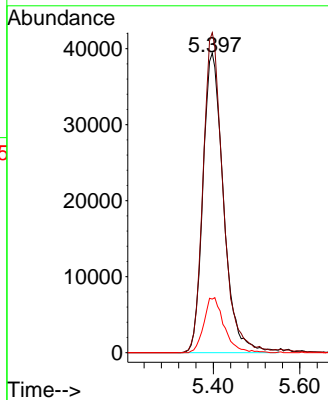
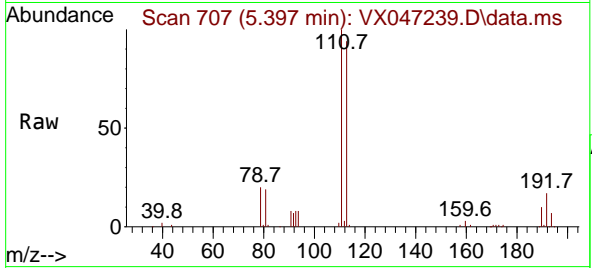


#35
 Dibromofluoromethane
 Concen: 47.017 ug/l
 RT: 5.397 min Scan# 707
 Delta R.T. 0.000 min
 Lab File: VX047239.D
 Acq: 06 Aug 2025 11:31

Instrument : MSVOA_X
 ClientSampleId : VX0806MBL01

Tgt Ion:113 Resp: 130164

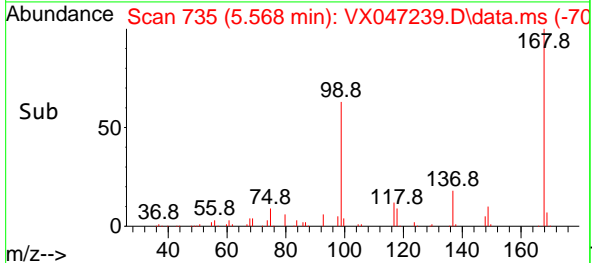
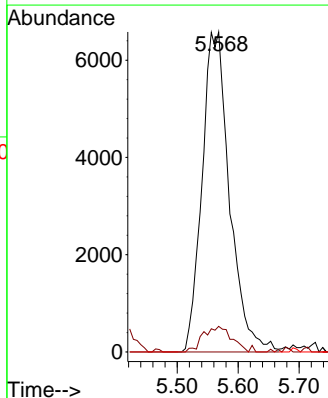
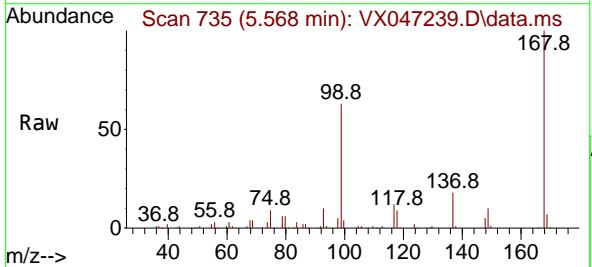
Ion	Ratio	Lower	Upper
113	100		
111	103.4	82.6	124.0
192	18.2	14.9	22.3

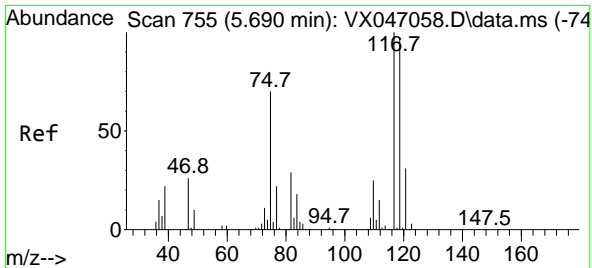


#36
 1,1-Dichloropropene
 Concen: 4.376 ug/l
 RT: 5.568 min Scan# 735
 Delta R.T. -0.134 min
 Lab File: VX047239.D
 Acq: 06 Aug 2025 11:31

Tgt Ion: 75 Resp: 20650

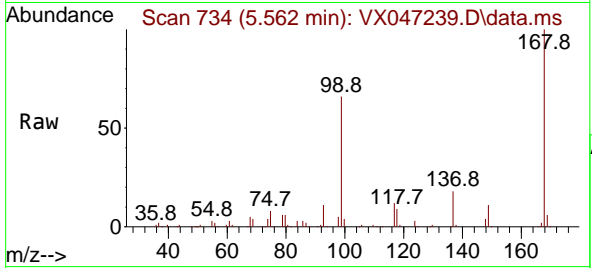
Ion	Ratio	Lower	Upper
75	100		
110	8.2	17.2	51.5#
77	0.0	25.1	37.7#



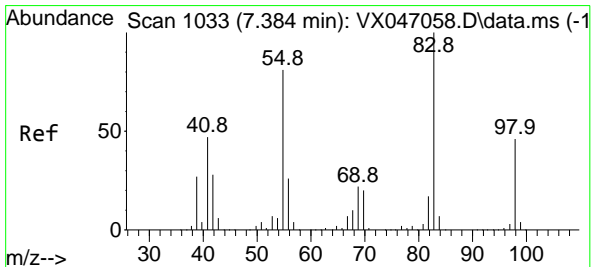
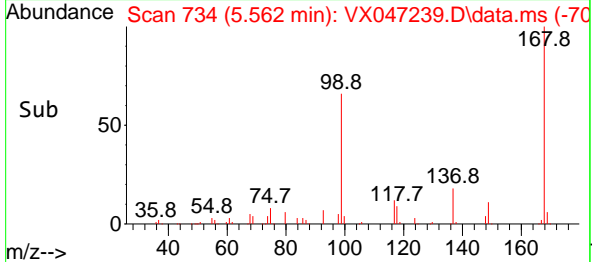
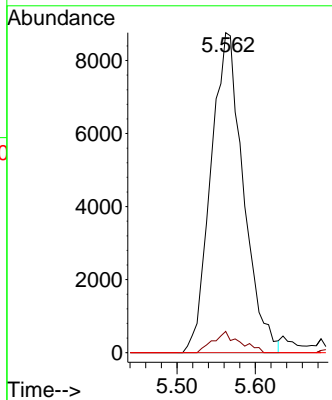


#38
 Carbon Tetrachloride
 Concen: 5.004 ug/l
 RT: 5.562 min Scan# 71
 Delta R.T. -0.128 min
 Lab File: VX047239.D
 Acq: 06 Aug 2025 11:31

Instrument : MSVOA_X
 ClientSampleId : VX0806MBL01

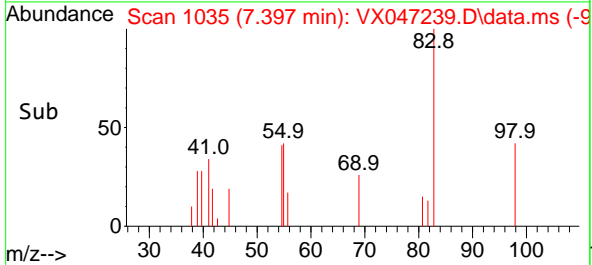
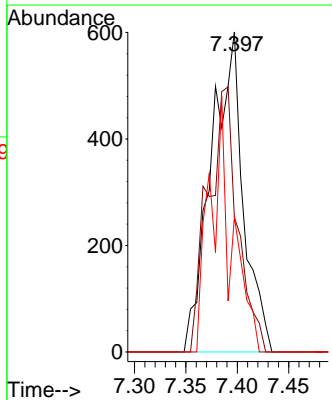
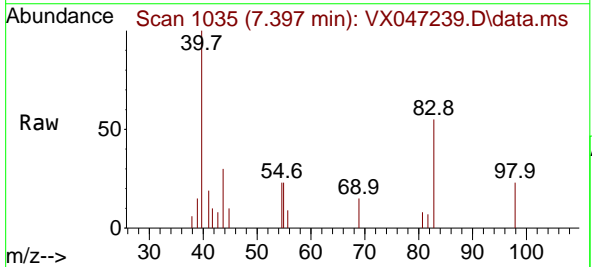


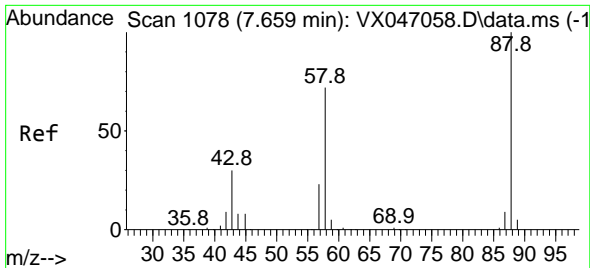
Tgt Ion: 117 Resp: 25202
 Ion Ratio Lower Upper
 117 100
 119 6.7 76.6 115.0#
 121 0.0 24.4 36.6#



#39
 Methylcyclohexane
 Concen: 0.223 ug/l
 RT: 7.397 min Scan# 1035
 Delta R.T. 0.013 min
 Lab File: VX047239.D
 Acq: 06 Aug 2025 11:31

Tgt Ion: 83 Resp: 1312
 Ion Ratio Lower Upper
 83 100
 55 58.7 64.5 96.7#
 98 42.1 36.9 55.3

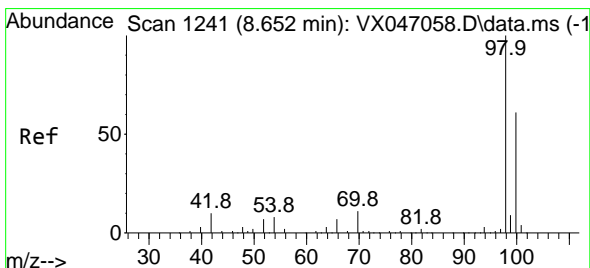
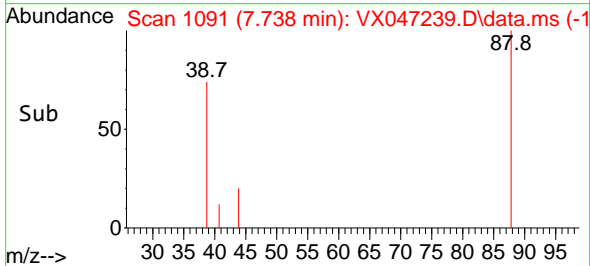
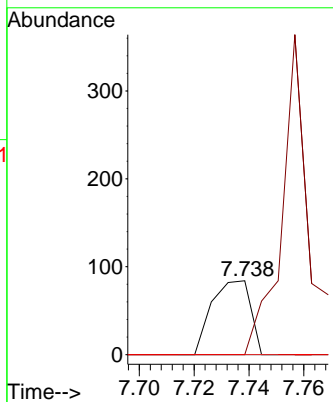
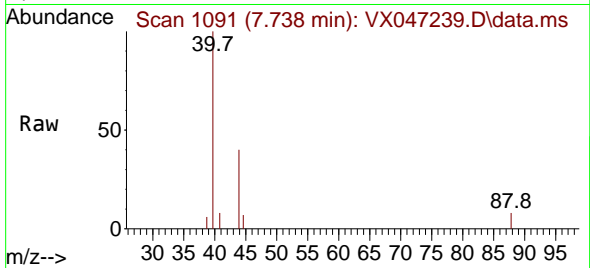




#49
 1,4-Dioxane
 Concen: 1.976 ug/l
 RT: 7.738 min Scan# 1091
 Delta R.T. 0.080 min
 Lab File: VX047239.D
 Acq: 06 Aug 2025 11:31

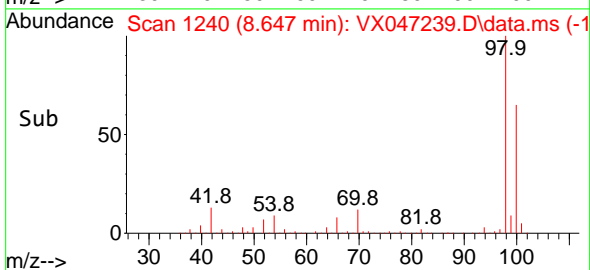
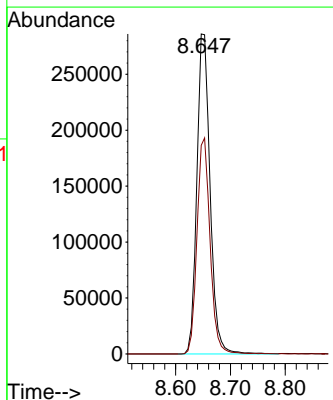
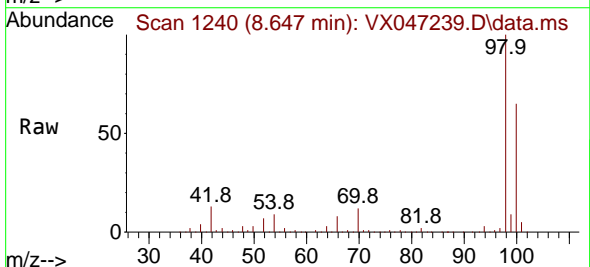
Instrument : MSVOA_X
 ClientSampleId : VX0806MBL01

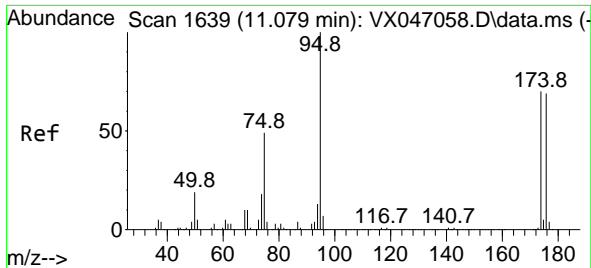
Tgt Ion	Resp	Lower	Upper
88	100		
43	314.5	33.6	50.4#
58	0.0	58.8	88.2#



#50
 Toluene-d8
 Concen: 53.663 ug/l
 RT: 8.647 min Scan# 1240
 Delta R.T. -0.006 min
 Lab File: VX047239.D
 Acq: 06 Aug 2025 11:31

Tgt Ion	Resp	Lower	Upper
98	100		
100	66.8	53.3	79.9

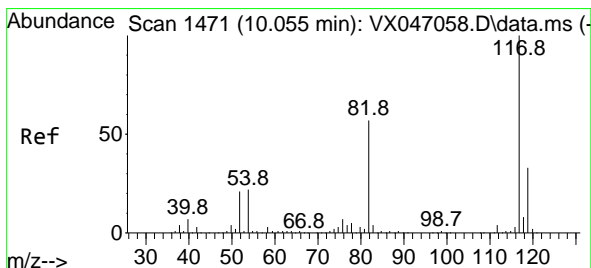
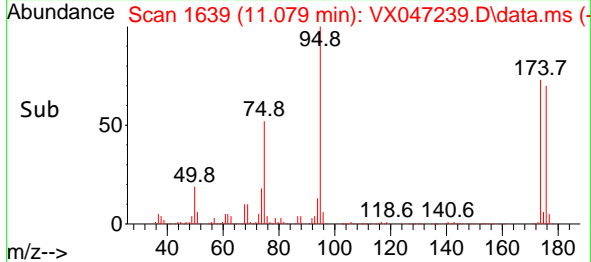
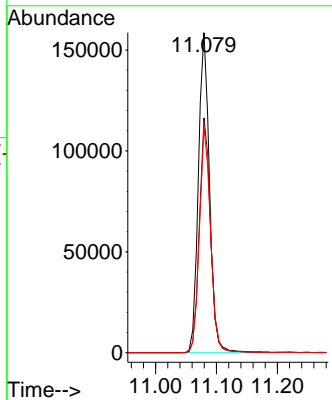
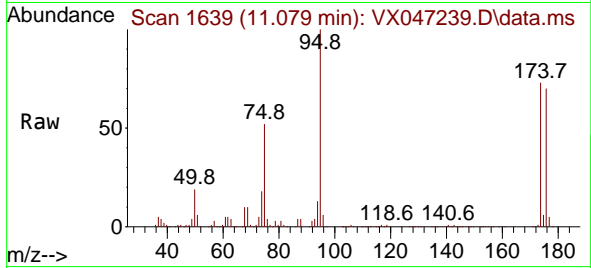




#62
 4-Bromofluorobenzene
 Concen: 52.138 ug/l
 RT: 11.079 min Scan# 1639
 Delta R.T. 0.000 min
 Lab File: VX047239.D
 Acq: 06 Aug 2025 11:31

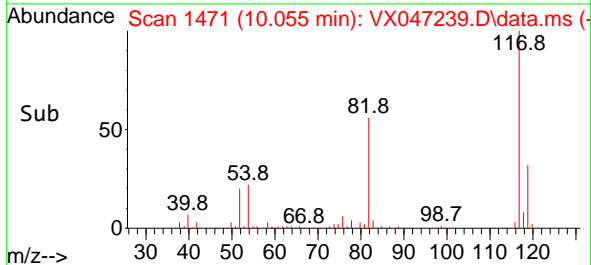
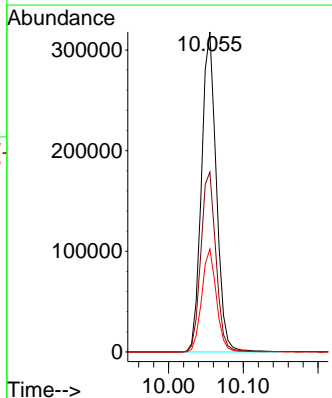
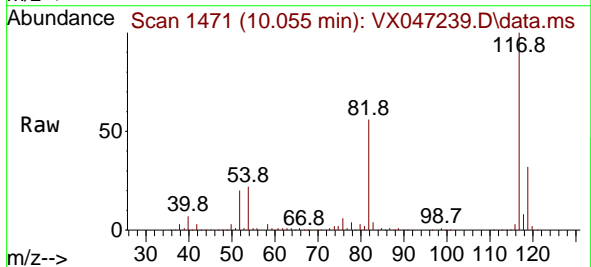
Instrument :
 MSVOA_X
 ClientSampleId :
 VX0806MBL01

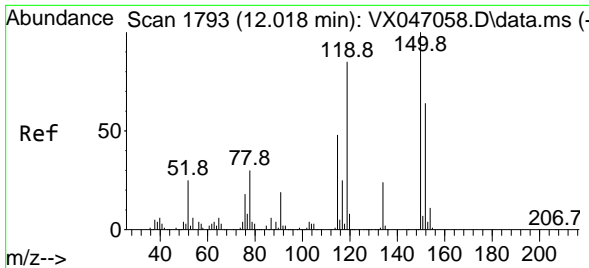
Tgt Ion: 95 Resp: 201444
 Ion Ratio Lower Upper
 95 100
 174 73.8 0.0 144.6
 176 70.8 0.0 139.6



#63
 Chlorobenzene-d5
 Concen: 50.000 ug/l
 RT: 10.055 min Scan# 1471
 Delta R.T. 0.000 min
 Lab File: VX047239.D
 Acq: 06 Aug 2025 11:31

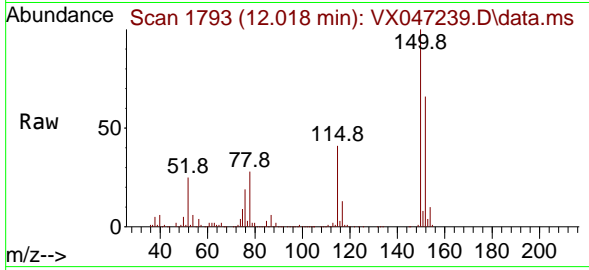
Tgt Ion: 117 Resp: 438888
 Ion Ratio Lower Upper
 117 100
 82 56.2 45.4 68.2
 119 32.1 26.1 39.1



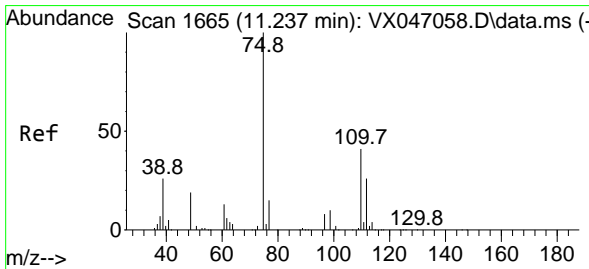
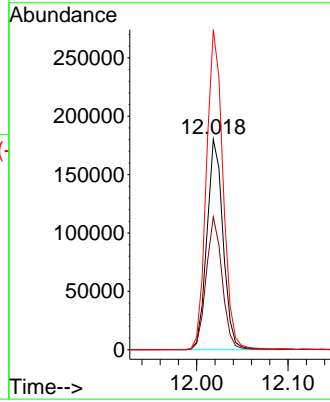
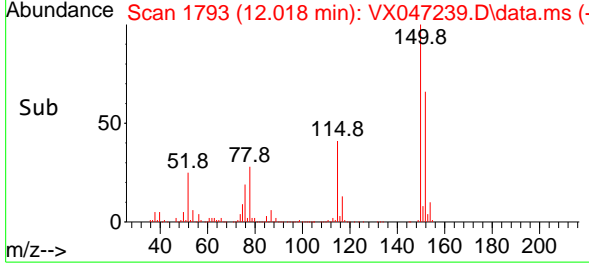


#72
 1,4-Dichlorobenzene-d4
 Concen: 50.000 ug/l
 RT: 12.018 min Scan# 11
 Delta R.T. 0.000 min
 Lab File: VX047239.D
 Acq: 06 Aug 2025 11:31

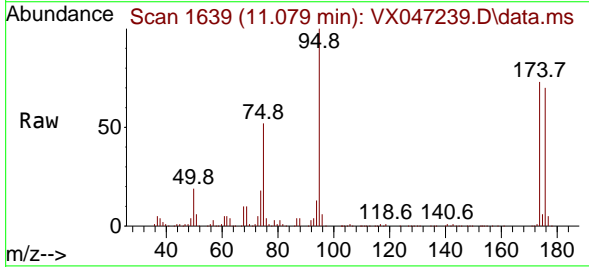
Instrument :
 MSVOA_X
 ClientSampleId :
 VX0806MBL01



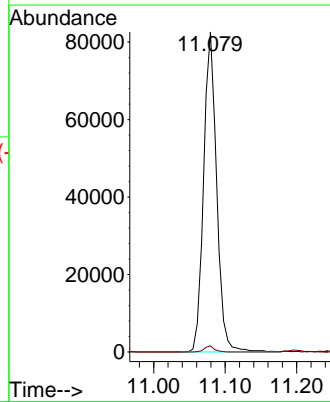
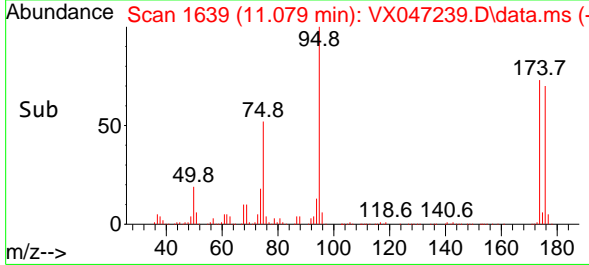
Tgt Ion:152 Resp: 220751
 Ion Ratio Lower Upper
 152 100
 115 62.6 45.6 136.7
 150 155.7 0.0 354.6

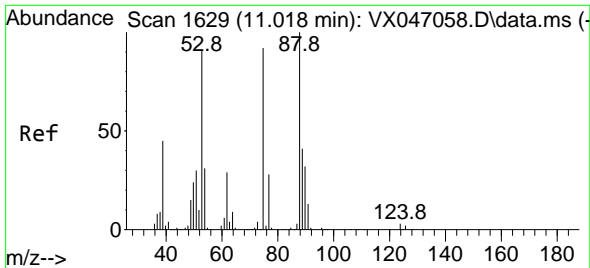


#76
 1,2,3-Trichloropropane
 Concen: 25.636 ug/l
 RT: 11.079 min Scan# 1639
 Delta R.T. -0.158 min
 Lab File: VX047239.D
 Acq: 06 Aug 2025 11:31



Tgt Ion: 75 Resp: 104750
 Ion Ratio Lower Upper
 75 100
 77 1.5 21.6 65.0#

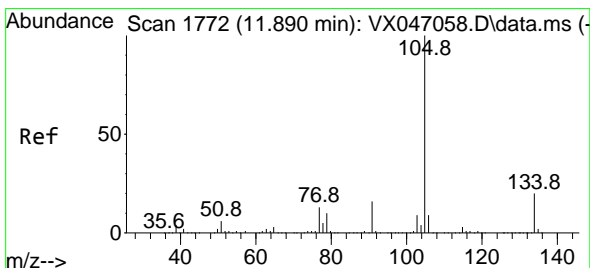
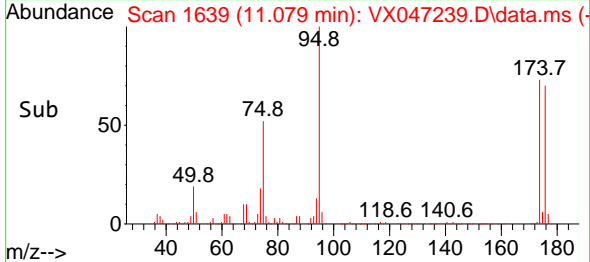
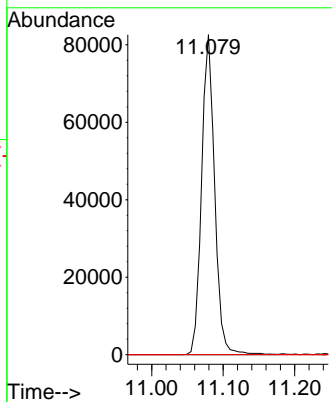
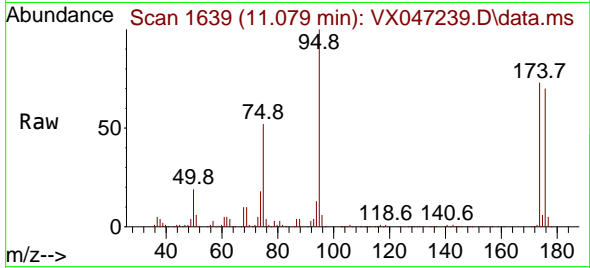




#81
 trans-1,4-Dichloro-2-butene
 Concen: 66.049 ug/l
 RT: 11.079 min Scan# 1639
 Delta R.T. 0.061 min
 Lab File: VX047239.D
 Acq: 06 Aug 2025 11:31

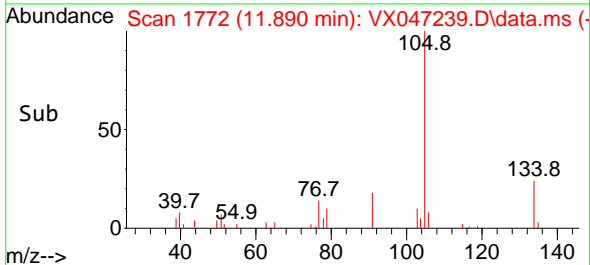
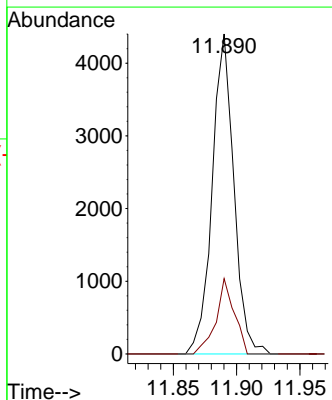
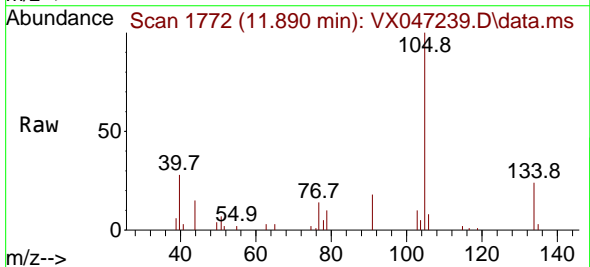
Instrument : MSVOA_X
 ClientSampleId : VX0806MBL01

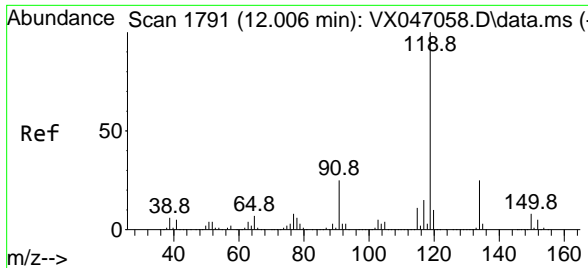
Tgt Ion: 75 Resp: 104750
 Ion Ratio Lower Upper
 75 100
 53 0.0 84.2 126.4#
 89 0.0 36.0 54.0#



#85
 sec-Butylbenzene
 Concen: 0.290 ug/l
 RT: 11.890 min Scan# 1772
 Delta R.T. 0.000 min
 Lab File: VX047239.D
 Acq: 06 Aug 2025 11:31

Tgt Ion:105 Resp: 5240
 Ion Ratio Lower Upper
 105 100
 134 19.9 9.9 29.7

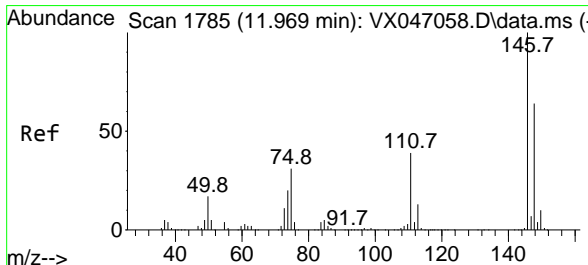
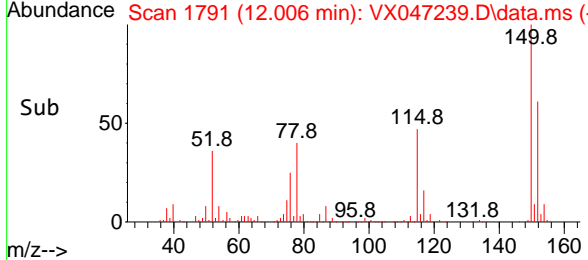
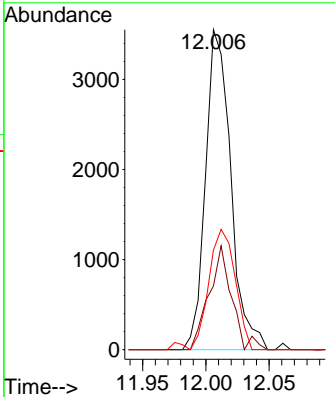
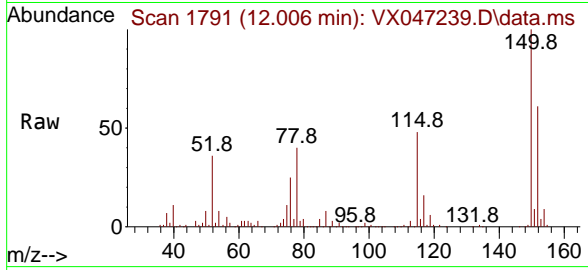




#86
 p-Isopropyltoluene
 Concen: 0.330 ug/l
 RT: 12.006 min Scan# 1791
 Delta R.T. 0.000 min
 Lab File: VX047239.D
 Acq: 06 Aug 2025 11:31

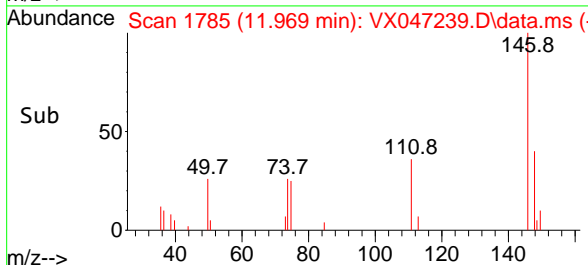
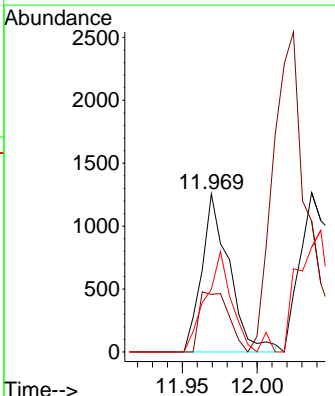
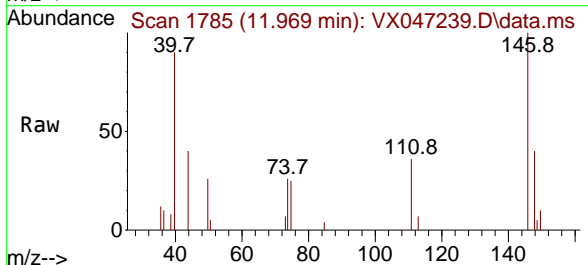
Instrument : MSVOA_X
 ClientSampleId : VX0806MBL01

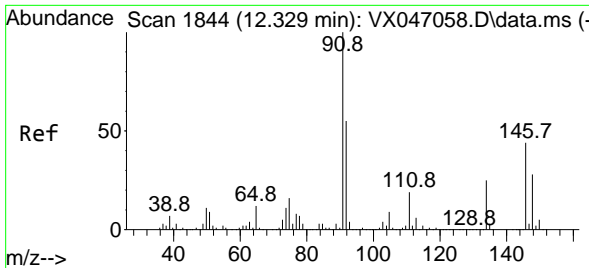
Tgt Ion	Resp	Lower	Upper
119	4937		
100			
134	29.1	12.8	38.4
91	40.0	12.4	37.4



#87
 1,3-Dichlorobenzene
 Concen: 0.202 ug/l
 RT: 11.969 min Scan# 1785
 Delta R.T. 0.000 min
 Lab File: VX047239.D
 Acq: 06 Aug 2025 11:31

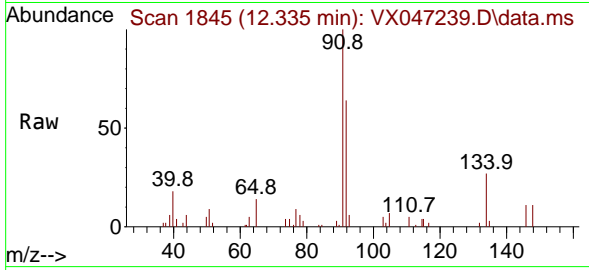
Tgt Ion	Resp	Lower	Upper
146	1606		
100			
111	40.5	21.0	63.0
148	59.0	32.0	96.0





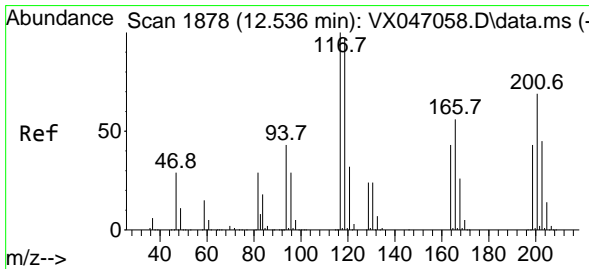
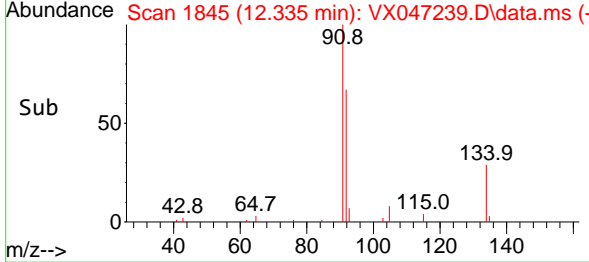
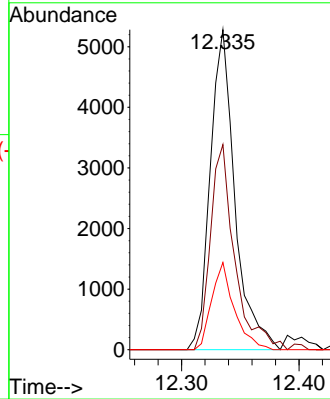
#89
 n-Butylbenzene
 Concen: 0.548 ug/l
 RT: 12.335 min Scan# 1845
 Delta R.T. 0.007 min
 Lab File: VX047239.D
 Acq: 06 Aug 2025 11:31

Instrument : MSVOA_X
 ClientSampleId : VX0806MBL01



Tgt Ion: 91 Resp: 7696

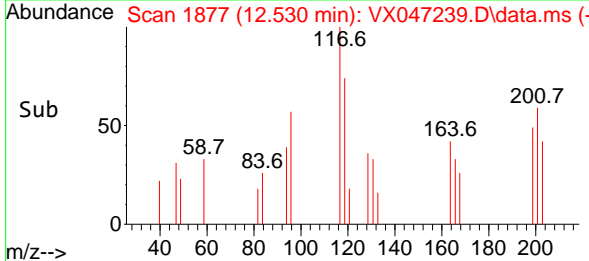
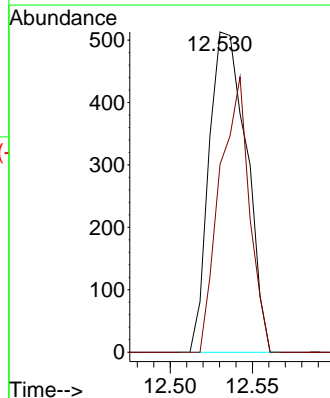
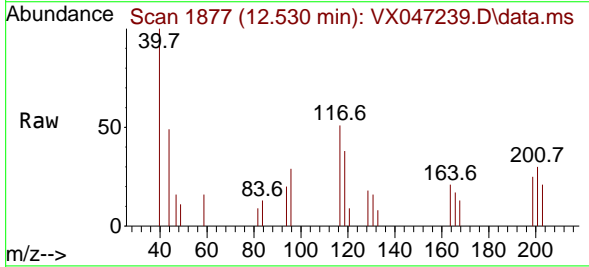
Ion	Ratio	Lower	Upper
91	100		
92	62.8	27.5	82.5
134	25.1	12.8	38.3

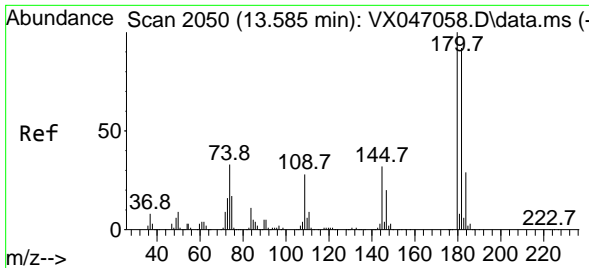


#90
 Hexachloroethane
 Concen: 0.303 ug/l
 RT: 12.530 min Scan# 1877
 Delta R.T. -0.006 min
 Lab File: VX047239.D
 Acq: 06 Aug 2025 11:31

Tgt Ion: 117 Resp: 812

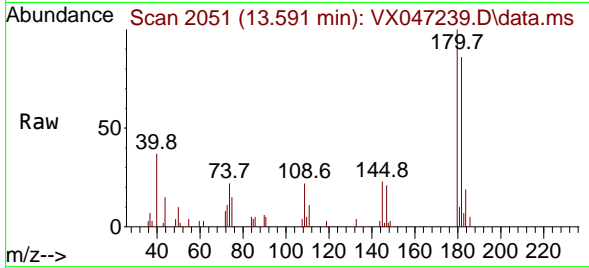
Ion	Ratio	Lower	Upper
117	100		
201	68.1	34.8	104.5



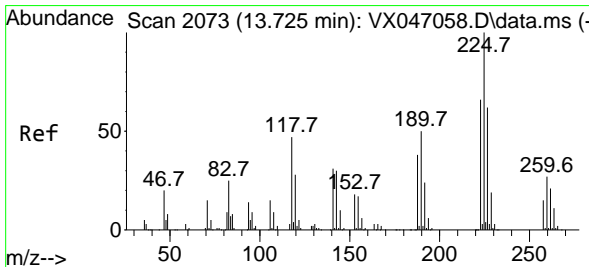
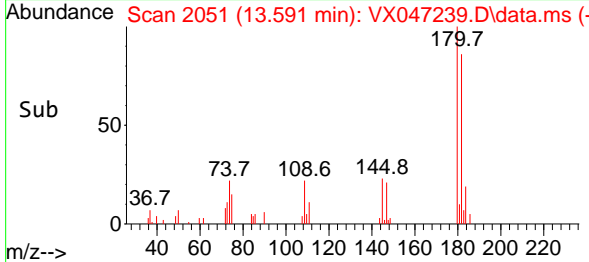
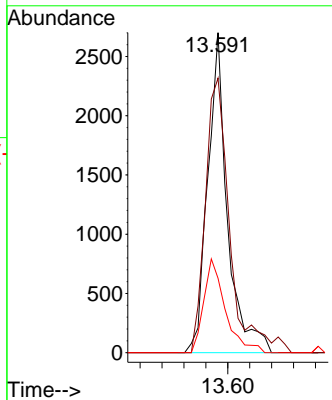


#93
 1,2,4-Trichlorobenzene
 Concen: 0.672 ug/l
 RT: 13.591 min Scan# 2051
 Delta R.T. 0.006 min
 Lab File: VX047239.D
 Acq: 06 Aug 2025 11:31

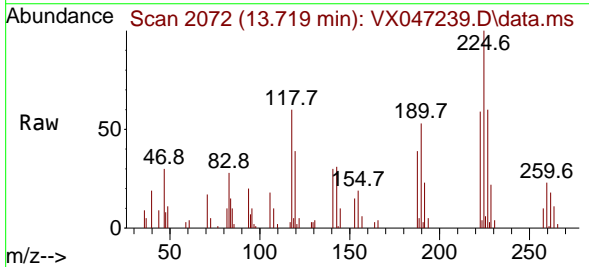
Instrument :
 MSVOA_X
 ClientSampleId :
 VX0806MBL01



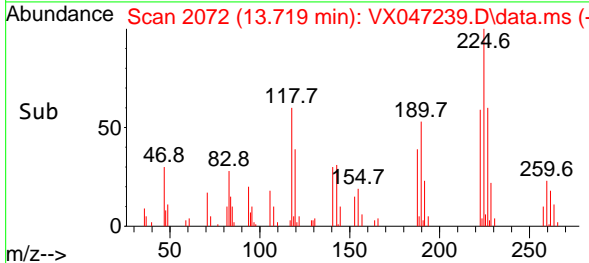
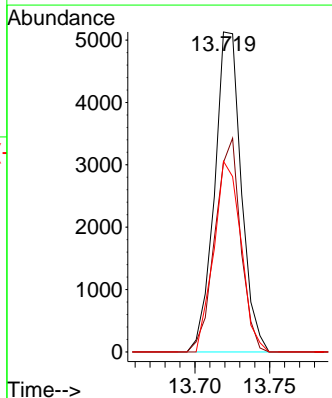
Tgt Ion:180 Resp: 3366
 Ion Ratio Lower Upper
 180 100
 182 106.4 47.3 141.8
 145 32.1 16.4 49.1

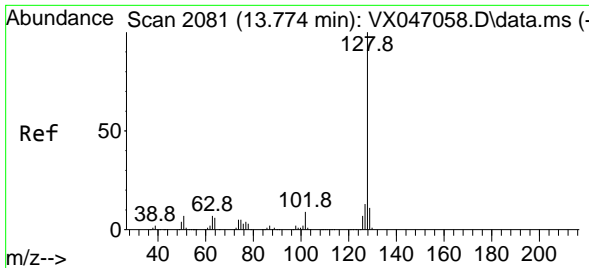


#94
 Hexachlorobutadiene
 Concen: 3.740 ug/l
 RT: 13.719 min Scan# 2072
 Delta R.T. -0.006 min
 Lab File: VX047239.D
 Acq: 06 Aug 2025 11:31



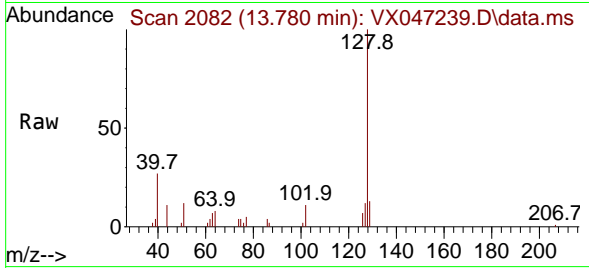
Tgt Ion:225 Resp: 6375
 Ion Ratio Lower Upper
 225 100
 223 63.8 31.6 95.0
 227 60.6 32.9 98.6



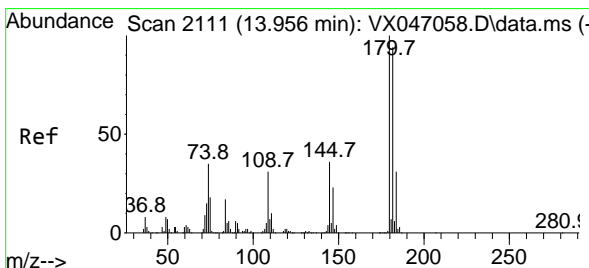
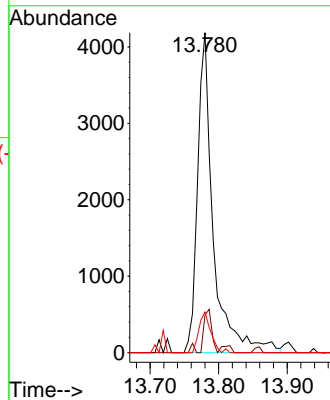
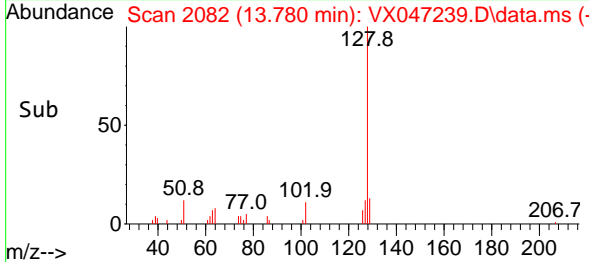


#95
 Naphthalene
 Concen: 0.454 ug/l
 RT: 13.780 min Scan# 2081
 Delta R.T. 0.007 min
 Lab File: VX047239.D
 Acq: 06 Aug 2025 11:31

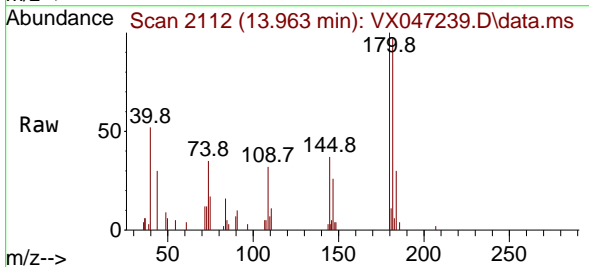
Instrument : MSVOA_X
 ClientSampleId : VX0806MBL01



Tgt Ion:128 Resp: 6674
 Ion Ratio Lower Upper
 128 100
 127 7.3 10.1 15.1#
 129 9.6 8.6 13.0



#96
 1,2,3-Trichlorobenzene
 Concen: 0.716 ug/l
 RT: 13.963 min Scan# 2112
 Delta R.T. 0.007 min
 Lab File: VX047239.D
 Acq: 06 Aug 2025 11:31



Tgt Ion:180 Resp: 3458
 Ion Ratio Lower Upper
 180 100
 182 95.7 46.9 140.6
 145 38.4 17.3 52.0

