

Data Path : Z:\voasrv\HPCHEM1\MSVOA\_X\Data\VX080625\  
 Data File : VX047240.D  
 Acq On : 06 Aug 2025 11:52  
 Operator : JC/MD  
 Sample : VX0806WBL01  
 Misc : 5.0mL/MSVOA\_X/WATER  
 ALS Vial : 4 Sample Multiplier: 1

Instrument :  
 MSVOA\_X  
 ClientSampleId :  
 VX0806WBL01

Quant Time: Aug 07 01:14:25 2025  
 Quant Method : Z:\voasrv\HPCHEM1\MSVOA\_X\Method\82X072125W.M  
 Quant Title : SW846 8260  
 QLast Update : Tue Jul 22 03:59:51 2025  
 Response via : Initial Calibration

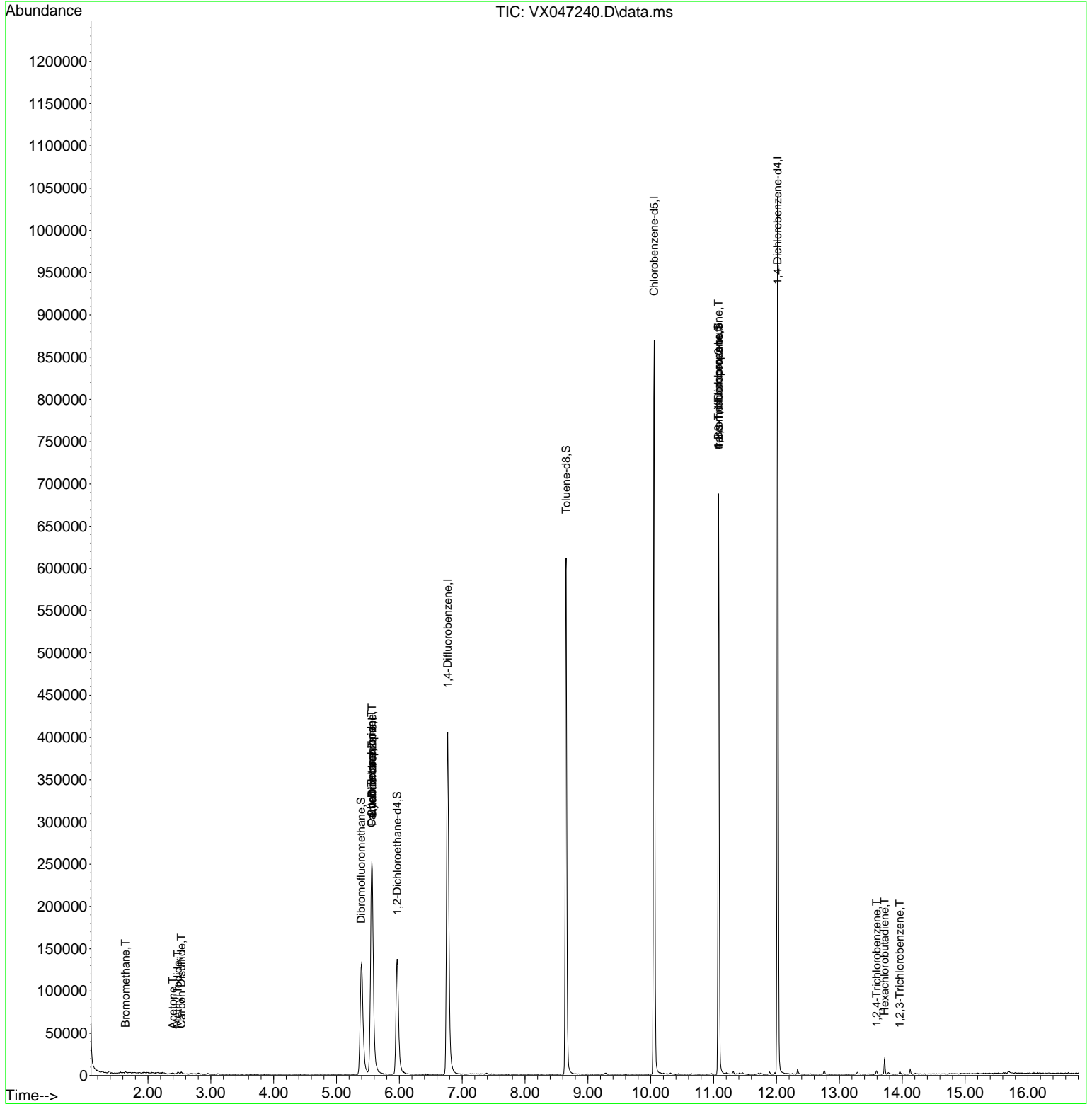
Compound	R.T.	QIon	Response	Conc	Units	Dev(Min)
-----						
Internal Standards						
1) Pentafluorobenzene	5.568	168	256237	50.000	ug/l	0.00
34) 1,4-Difluorobenzene	6.769	114	438784	50.000	ug/l	0.00
63) Chlorobenzene-d5	10.055	117	395124	50.000	ug/l	0.00
72) 1,4-Dichlorobenzene-d4	12.018	152	203840	50.000	ug/l	0.00
System Monitoring Compounds						
33) 1,2-Dichloroethane-d4	5.964	65	148941	46.662	ug/l	0.00
Spiked Amount	50.000	Range 78 - 117	Recovery	=	93.320%	
35) Dibromofluoromethane	5.391	113	127287	46.983	ug/l	0.00
Spiked Amount	50.000	Range 75 - 124	Recovery	=	93.960%	
50) Toluene-d8	8.653	98	381955	43.534	ug/l	0.00
Spiked Amount	50.000	Range 92 - 112	Recovery	=	87.060%#	
62) 4-Bromofluorobenzene	11.079	95	181934	48.118	ug/l	0.00
Spiked Amount	50.000	Range 83 - 123	Recovery	=	96.240%	
Target Compounds						
						Qvalue
5) Bromomethane	1.642	94	941	0.479	ug/l	88
10) Methyl Iodide	2.477	142	3390	1.023	ug/l	89
11) Tert butyl alcohol	2.953	59	100	Below Cal	#	72
16) Acetone	2.392	43	2056	1.608	ug/l #	82
17) Carbon Disulfide	2.532	76	2237	0.240	ug/l #	88
31) Cyclohexane	5.562	56	5697	0.955	ug/l #	30
36) 1,1-Dichloropropene	5.562	75	21194	4.589	ug/l #	50
38) Carbon Tetrachloride	5.556	117	27365	5.552	ug/l #	16
76) 1,2,3-Trichloropropane	11.079	75	94679	25.094	ug/l #	35
81) trans-1,4-Dichloro-2-b...	11.079	75	94679	64.652	ug/l #	8
93) 1,2,4-Trichlorobenzene	13.591	180	1437	0.310	ug/l	87
94) Hexachlorobutadiene	13.719	225	2151	1.367	ug/l	93
96) 1,2,3-Trichlorobenzene	13.963	180	953	0.214	ug/l	95
-----						

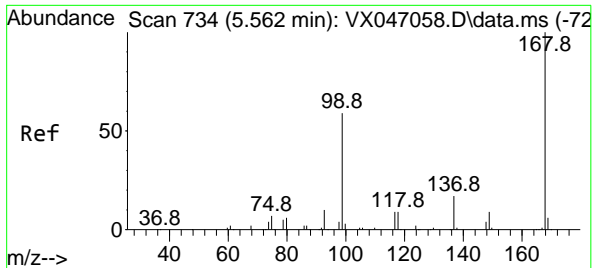
(#) = qualifier out of range (m) = manual integration (+) = signals summed

Data Path : Z:\voasrv\HPCHEM1\MSVOA\_X\Data\VX080625\  
 Data File : VX047240.D  
 Acq On : 06 Aug 2025 11:52  
 Operator : JC/MD  
 Sample : VX0806WBL01  
 Misc : 5.0mL/MSVOA\_X/WATER  
 ALS Vial : 4 Sample Multiplier: 1

Instrument :  
 MSVOA\_X  
 ClientSampleId :  
 VX0806WBL01

Quant Time: Aug 07 01:14:25 2025  
 Quant Method : Z:\voasrv\HPCHEM1\MSVOA\_X\Method\82X072125W.M  
 Quant Title : SW846 8260  
 QLast Update : Tue Jul 22 03:59:51 2025  
 Response via : Initial Calibration

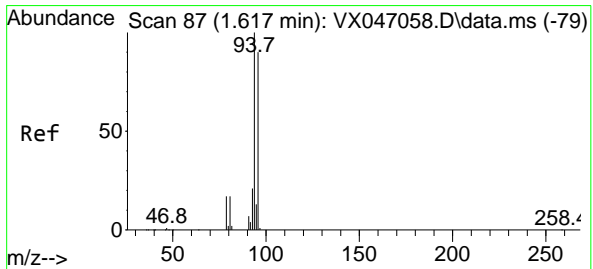
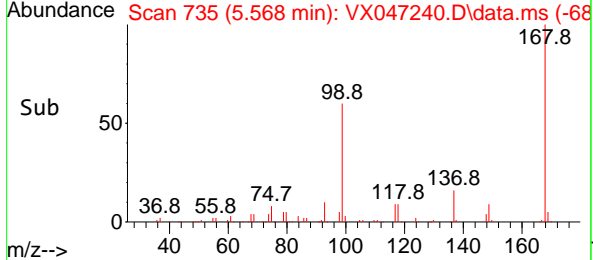
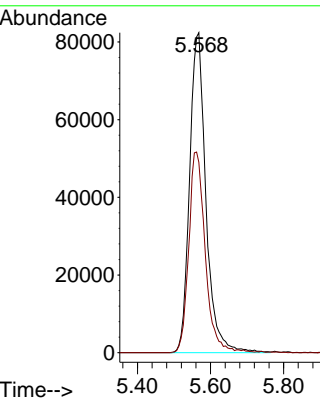
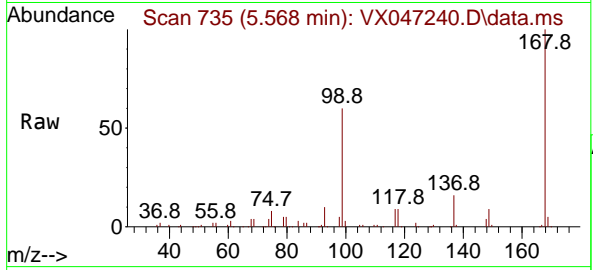




#1  
 Pentafluorobenzene  
 Concen: 50.000 ug/l  
 RT: 5.568 min Scan# 71  
 Delta R.T. 0.006 min  
 Lab File: VX047240.D  
 Acq: 06 Aug 2025 11:52

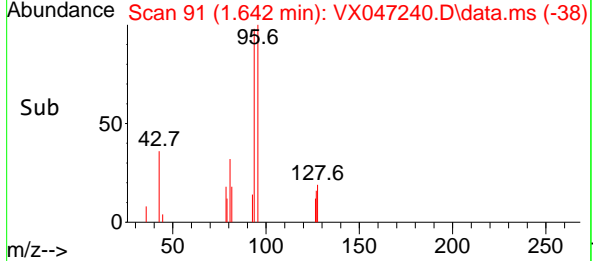
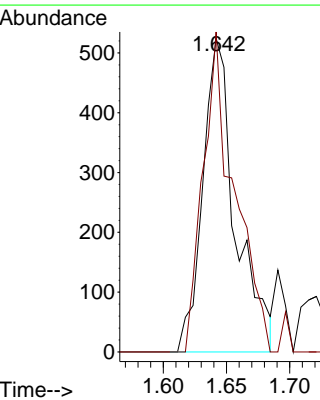
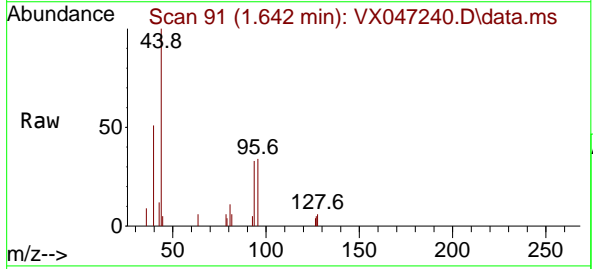
Instrument : MSVOA\_X  
 ClientSampleId : VX0806WBL01

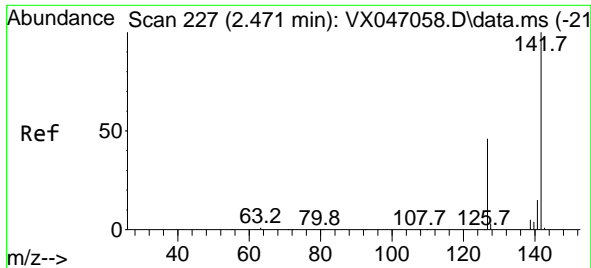
Tgt Ion:168 Resp: 256237  
 Ion Ratio Lower Upper  
 168 100  
 99 59.5 48.0 72.0



#5  
 Bromomethane  
 Concen: 0.479 ug/l  
 RT: 1.642 min Scan# 91  
 Delta R.T. 0.025 min  
 Lab File: VX047240.D  
 Acq: 06 Aug 2025 11:52

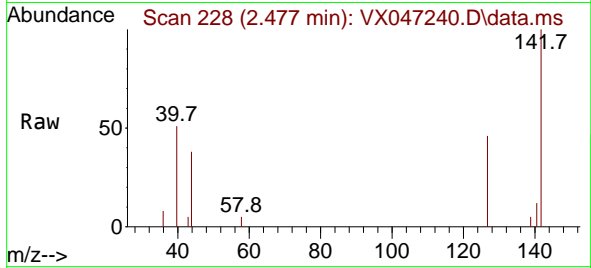
Tgt Ion: 94 Resp: 941  
 Ion Ratio Lower Upper  
 94 100  
 96 102.1 72.3 108.5



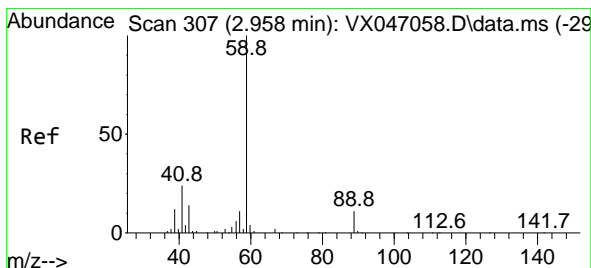
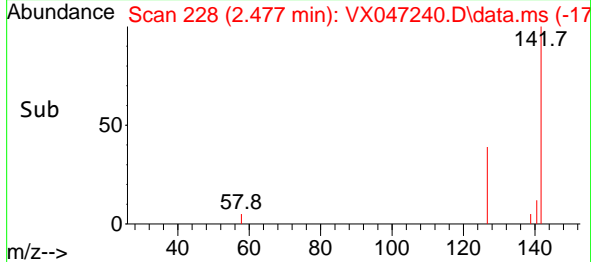
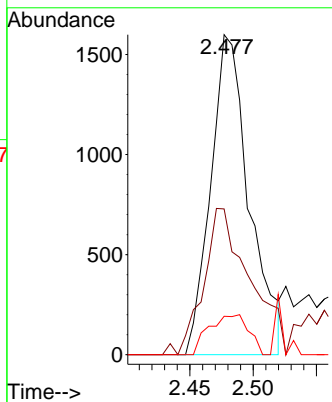


#10  
 Methyl Iodide  
 Concen: 1.023 ug/l  
 RT: 2.477 min Scan# 21  
 Delta R.T. 0.006 min  
 Lab File: VX047240.D  
 Acq: 06 Aug 2025 11:52

Instrument :  
 MSVOA\_X  
 ClientSampleId :  
 VX0806WBL01

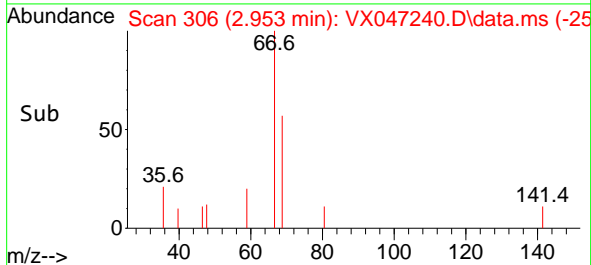
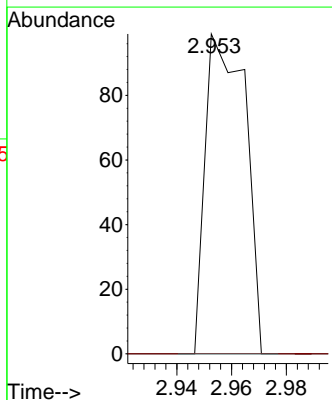
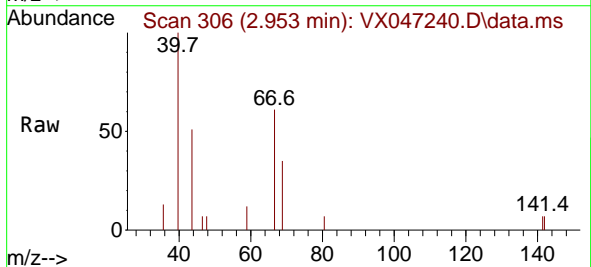


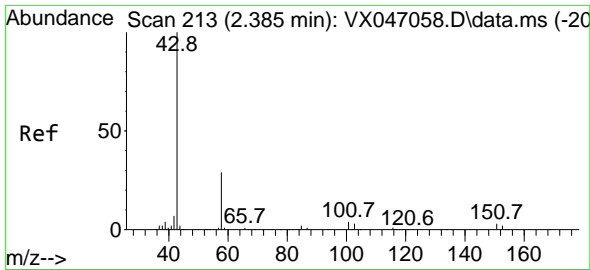
Tgt Ion:142 Resp: 3390  
 Ion Ratio Lower Upper  
 142 100  
 127 54.5 36.6 54.8  
 141 12.8 10.9 16.3



#11  
 Tert butyl alcohol  
 Concen: Below Cal  
 RT: 2.953 min Scan# 306  
 Delta R.T. -0.005 min  
 Lab File: VX047240.D  
 Acq: 06 Aug 2025 11:52

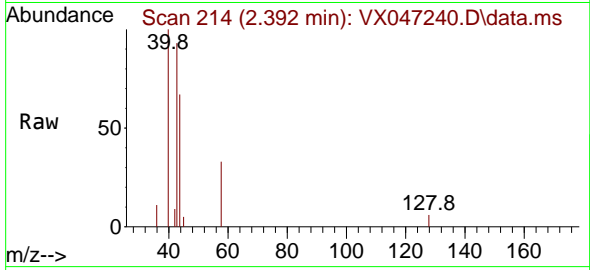
Tgt Ion: 59 Resp: 100  
 Ion Ratio Lower Upper  
 59 100  
 57 0.0 8.5 12.7#



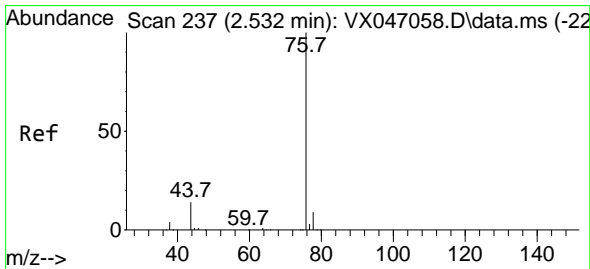
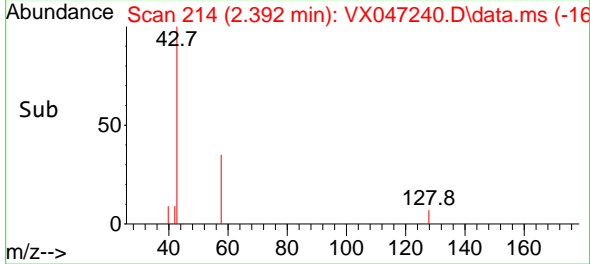
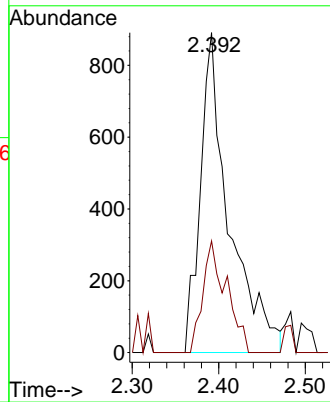


#16  
 Acetone  
 Concen: 1.608 ug/l  
 RT: 2.392 min Scan# 213  
 Delta R.T. 0.006 min  
 Lab File: VX047240.D  
 Acq: 06 Aug 2025 11:52

Instrument : MSVOA\_X  
 ClientSampleId : VX0806WBL01

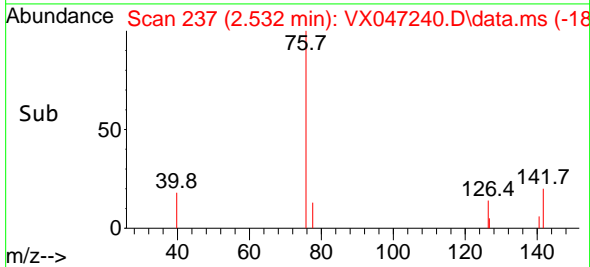
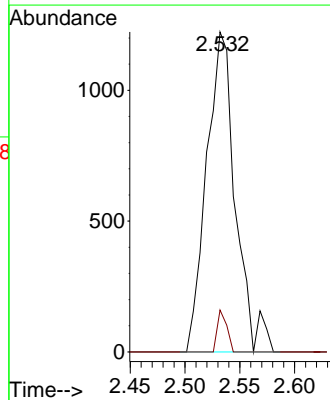
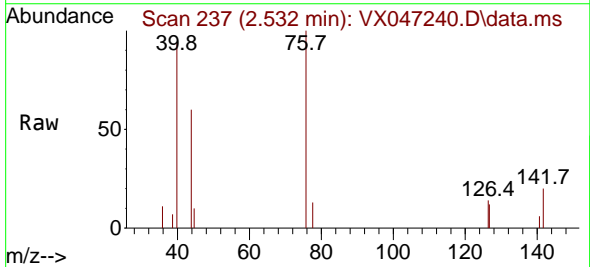


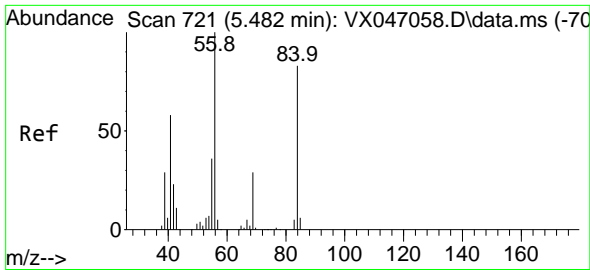
Tgt Ion: 43 Resp: 2056  
 Ion Ratio Lower Upper  
 43 100  
 58 20.3 24.0 36.0#



#17  
 Carbon Disulfide  
 Concen: 0.240 ug/l  
 RT: 2.532 min Scan# 237  
 Delta R.T. 0.000 min  
 Lab File: VX047240.D  
 Acq: 06 Aug 2025 11:52

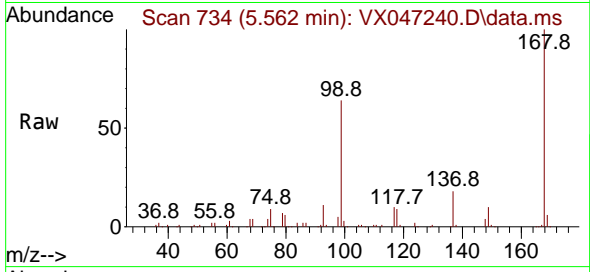
Tgt Ion: 76 Resp: 2237  
 Ion Ratio Lower Upper  
 76 100  
 78 13.1 7.0 10.4#



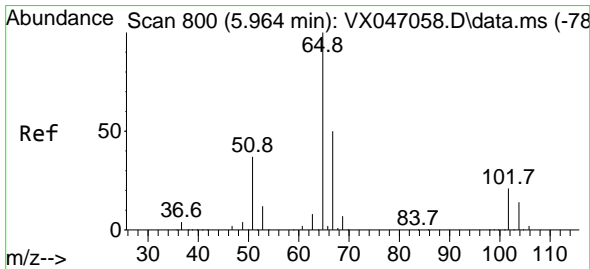
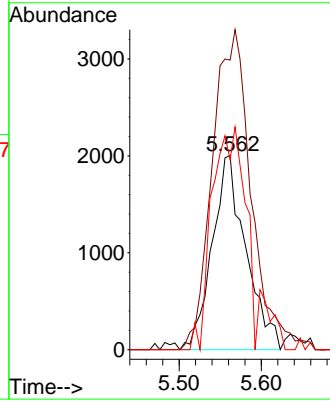
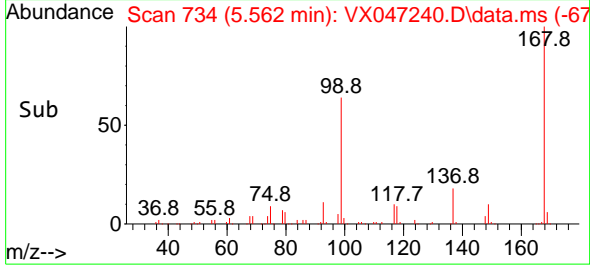


#31  
 Cyclohexane  
 Concen: 0.955 ug/l  
 RT: 5.562 min Scan# 71  
 Delta R.T. 0.080 min  
 Lab File: VX047240.D  
 Acq: 06 Aug 2025 11:52

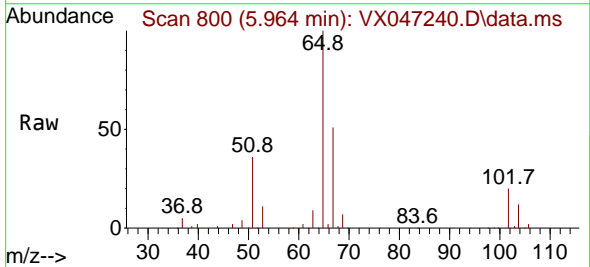
Instrument :  
 MSVOA\_X  
 ClientSampleId :  
 VX0806WBL01



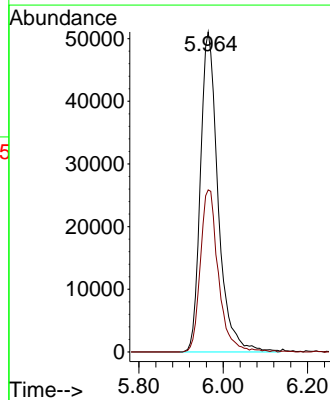
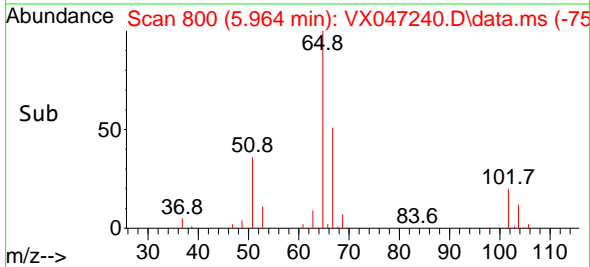
Tgt Ion: 56 Resp: 5697  
 Ion Ratio Lower Upper  
 56 100  
 69 149.1 23.3 34.9#  
 84 97.9 66.5 99.7

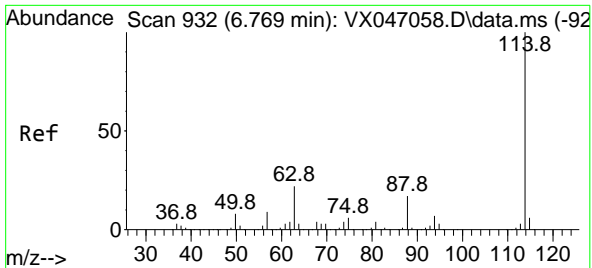


#33  
 1,2-Dichloroethane-d4  
 Concen: 46.662 ug/l  
 RT: 5.964 min Scan# 800  
 Delta R.T. 0.000 min  
 Lab File: VX047240.D  
 Acq: 06 Aug 2025 11:52



Tgt Ion: 65 Resp: 148941  
 Ion Ratio Lower Upper  
 65 100  
 67 51.6 0.0 104.8





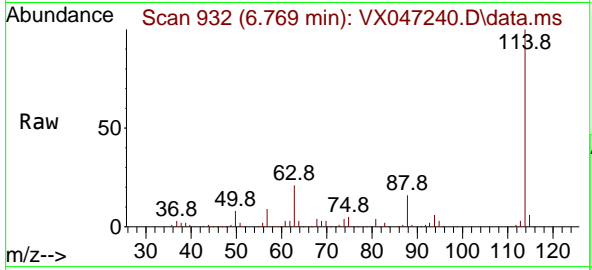
#34  
 1,4-Difluorobenzene  
 Concen: 50.000 ug/l  
 RT: 6.769 min Scan# 91  
 Delta R.T. 0.000 min  
 Lab File: VX047240.D  
 Acq: 06 Aug 2025 11:52

Instrument :

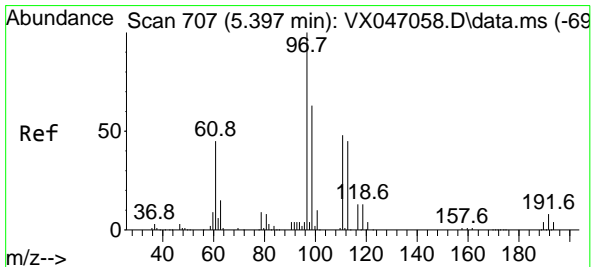
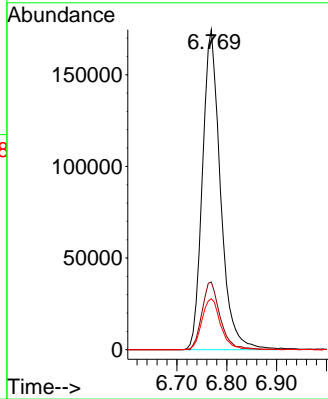
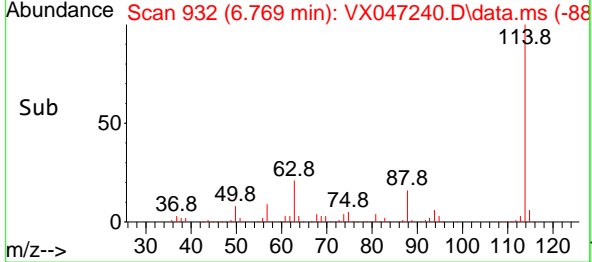
MSVOA\_X

ClientSampleId :

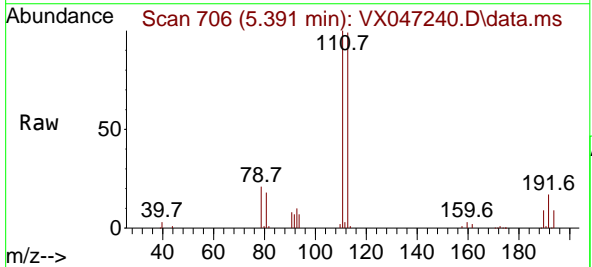
VX0806WBL01



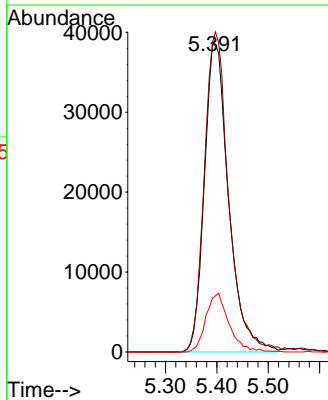
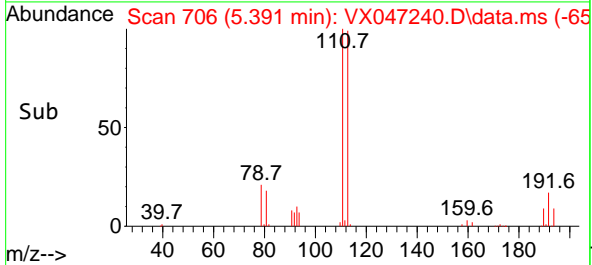
Tgt Ion:114 Resp: 438784  
 Ion Ratio Lower Upper  
 114 100  
 63 21.2 0.0 43.2  
 88 15.9 0.0 33.8

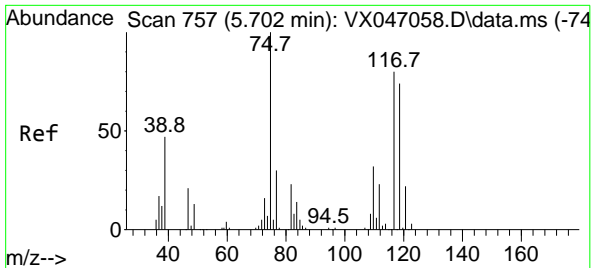


#35  
 Dibromofluoromethane  
 Concen: 46.983 ug/l  
 RT: 5.391 min Scan# 706  
 Delta R.T. -0.006 min  
 Lab File: VX047240.D  
 Acq: 06 Aug 2025 11:52



Tgt Ion:113 Resp: 127287  
 Ion Ratio Lower Upper  
 113 100  
 111 103.8 82.6 124.0  
 192 18.0 14.9 22.3

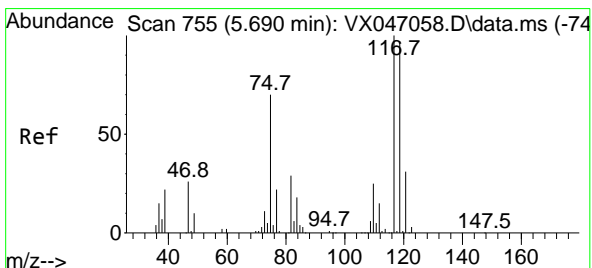
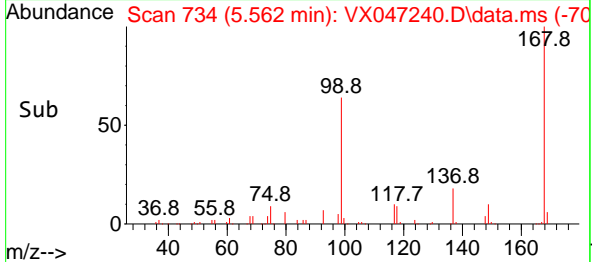
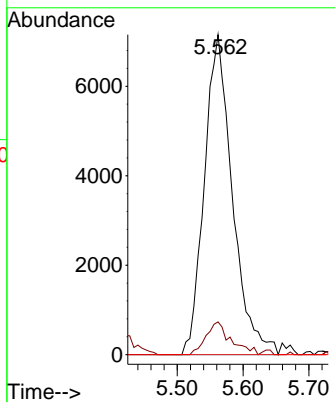
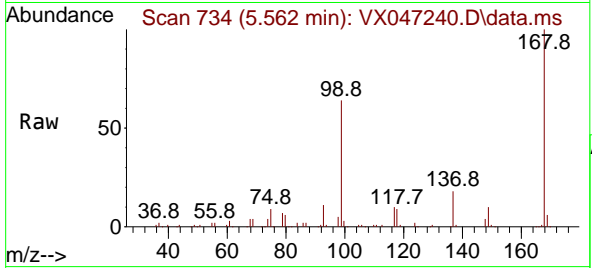




#36  
 1,1-Dichloropropene  
 Concen: 4.589 ug/l  
 RT: 5.562 min Scan# 711  
 Delta R.T. -0.140 min  
 Lab File: VX047240.D  
 Acq: 06 Aug 2025 11:52

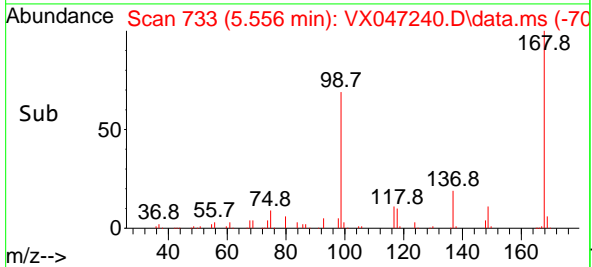
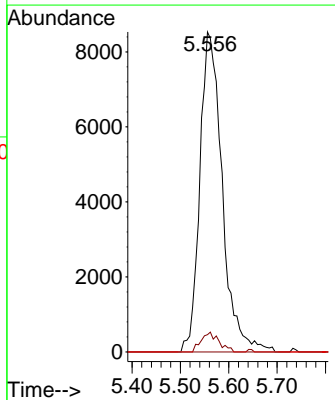
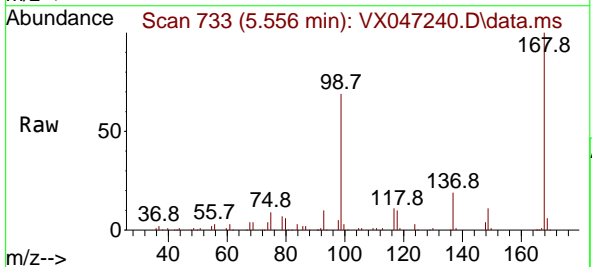
Instrument : MSVOA\_X  
 ClientSampleId : VX0806WBL01

Tgt Ion:	Resp:	Lower	Upper
75	21194		
75	100		
110	9.1	17.2	51.5#
77	0.0	25.1	37.7#

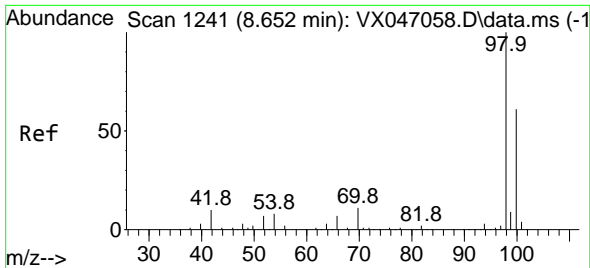


#38  
 Carbon Tetrachloride  
 Concen: 5.552 ug/l  
 RT: 5.556 min Scan# 733  
 Delta R.T. -0.134 min  
 Lab File: VX047240.D  
 Acq: 06 Aug 2025 11:52

Tgt Ion:	Resp:	Lower	Upper
117	27365		
117	100		
119	5.4	76.6	115.0#
121	0.0	24.4	36.6#



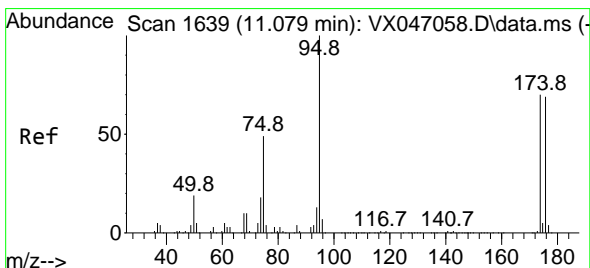
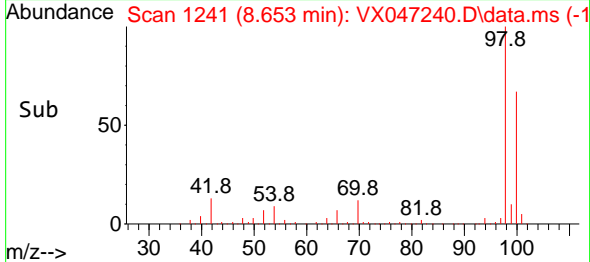
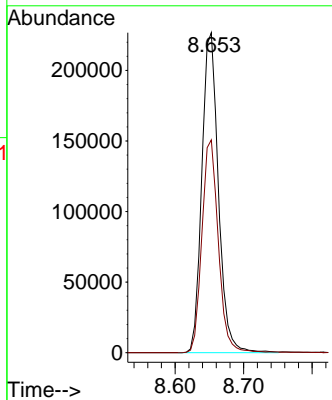
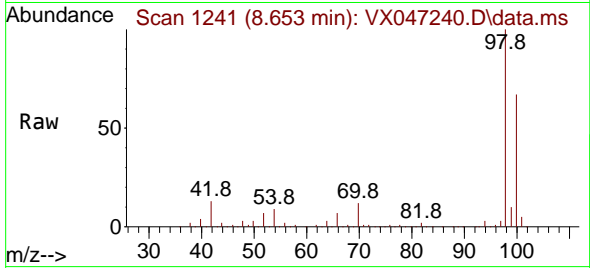




#50  
 Toluene-d8  
 Concen: 43.534 ug/l  
 RT: 8.653 min Scan# 11  
 Delta R.T. 0.000 min  
 Lab File: VX047240.D  
 Acq: 06 Aug 2025 11:52

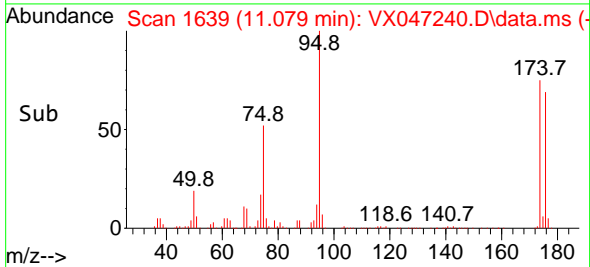
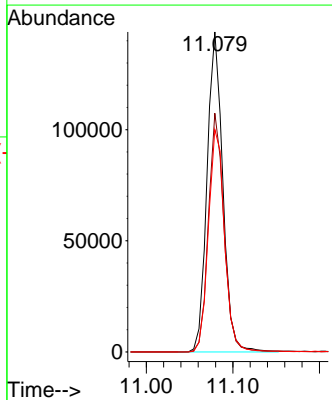
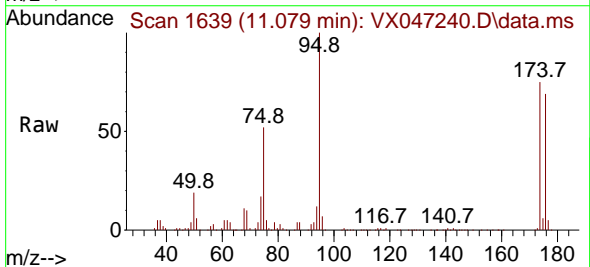
Instrument :  
 MSVOA\_X  
 ClientSampleId :  
 VX0806WBL01

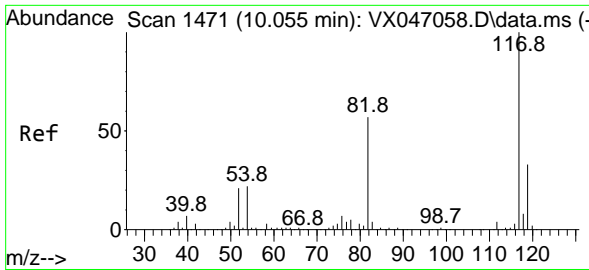
Tgt Ion: 98 Resp: 381955  
 Ion Ratio Lower Upper  
 98 100  
 100 66.2 53.3 79.9



#62  
 4-Bromofluorobenzene  
 Concen: 48.118 ug/l  
 RT: 11.079 min Scan# 1639  
 Delta R.T. 0.000 min  
 Lab File: VX047240.D  
 Acq: 06 Aug 2025 11:52

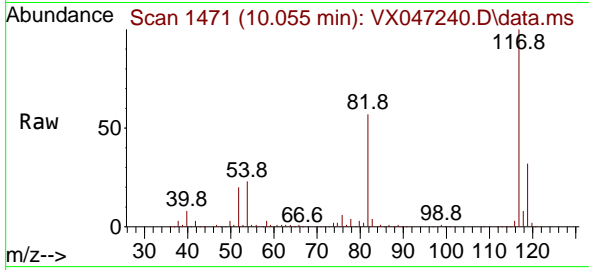
Tgt Ion: 95 Resp: 181934  
 Ion Ratio Lower Upper  
 95 100  
 174 73.9 0.0 144.6  
 176 71.5 0.0 139.6



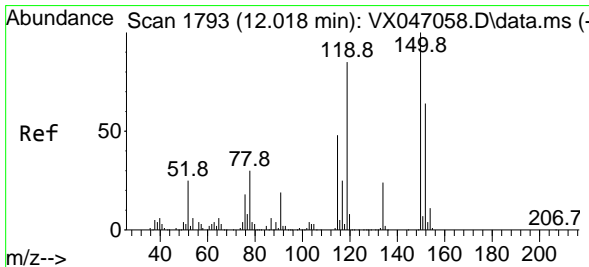
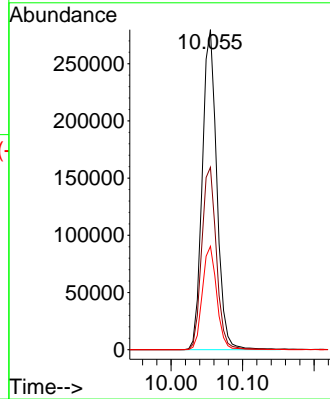
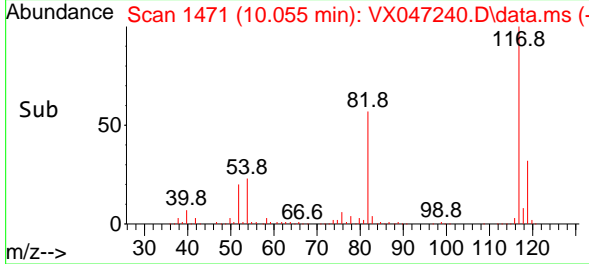


#63  
 Chlorobenzene-d5  
 Concen: 50.000 ug/l  
 RT: 10.055 min Scan# 14  
 Delta R.T. 0.000 min  
 Lab File: VX047240.D  
 Acq: 06 Aug 2025 11:52

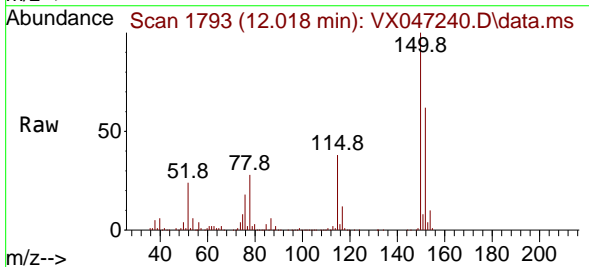
Instrument :  
 MSVOA\_X  
 ClientSampleId :  
 VX0806WBL01



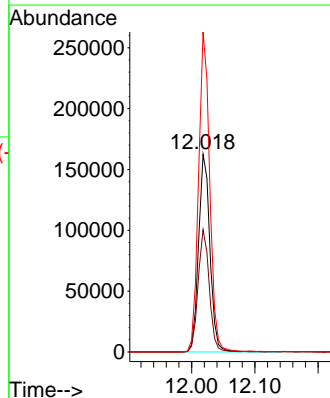
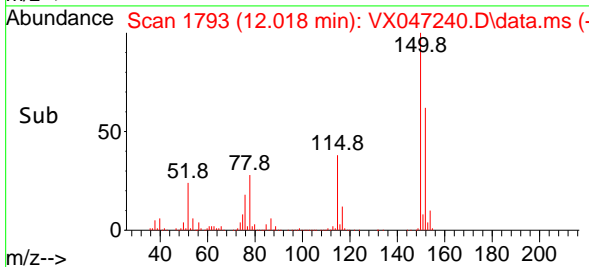
Tgt Ion:117 Resp: 395124  
 Ion Ratio Lower Upper  
 117 100  
 82 57.0 45.4 68.2  
 119 32.3 26.1 39.1

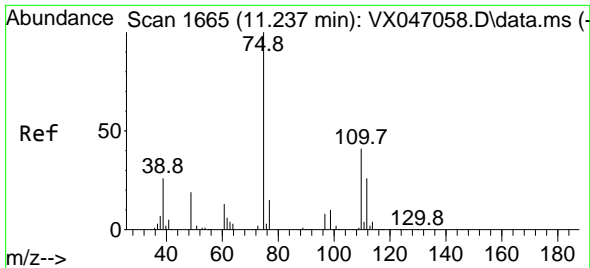


#72  
 1,4-Dichlorobenzene-d4  
 Concen: 50.000 ug/l  
 RT: 12.018 min Scan# 1793  
 Delta R.T. 0.000 min  
 Lab File: VX047240.D  
 Acq: 06 Aug 2025 11:52



Tgt Ion:152 Resp: 203840  
 Ion Ratio Lower Upper  
 152 100  
 115 61.0 45.6 136.7  
 150 158.5 0.0 354.6

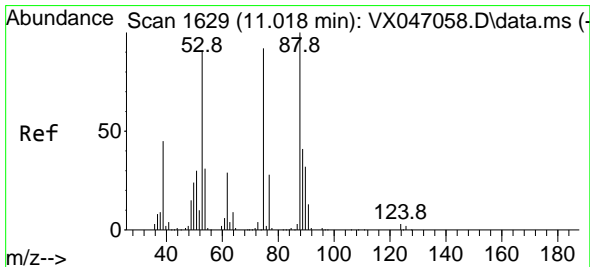
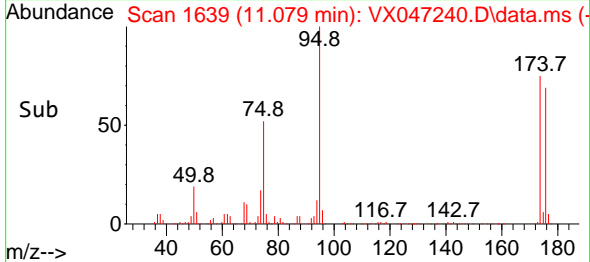
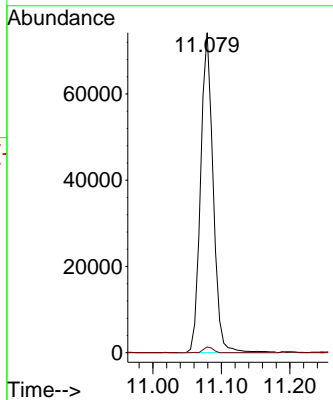
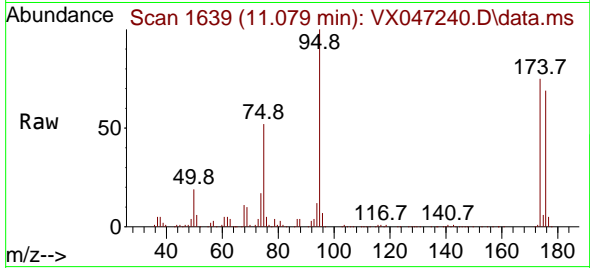




#76  
 1,2,3-Trichloropropane  
 Concen: 25.094 ug/l  
 RT: 11.079 min Scan# 1639  
 Delta R.T. -0.158 min  
 Lab File: VX047240.D  
 Acq: 06 Aug 2025 11:52

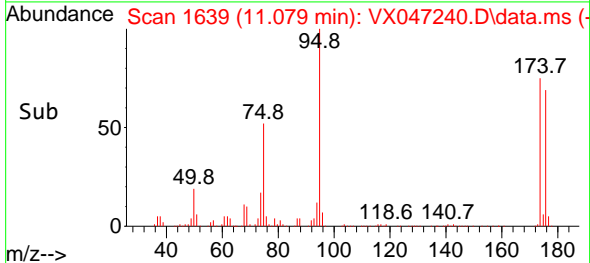
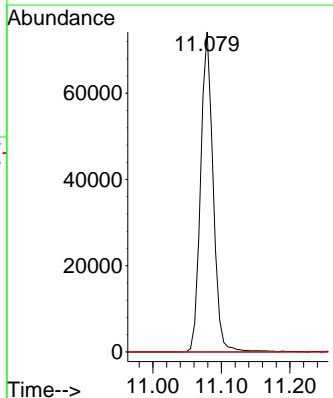
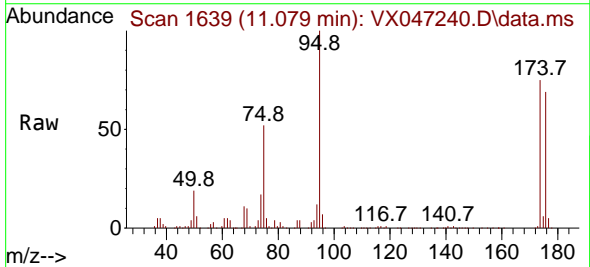
Instrument : MSVOA\_X  
 ClientSampleId : VX0806WBL01

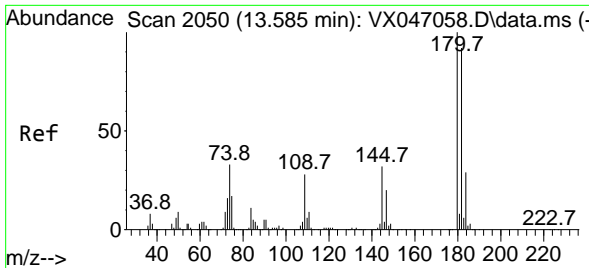
Tgt Ion: 75 Resp: 94679  
 Ion Ratio Lower Upper  
 75 100  
 77 1.4 21.6 65.0#



#81  
 trans-1,4-Dichloro-2-butene  
 Concen: 64.652 ug/l  
 RT: 11.079 min Scan# 1639  
 Delta R.T. 0.061 min  
 Lab File: VX047240.D  
 Acq: 06 Aug 2025 11:52

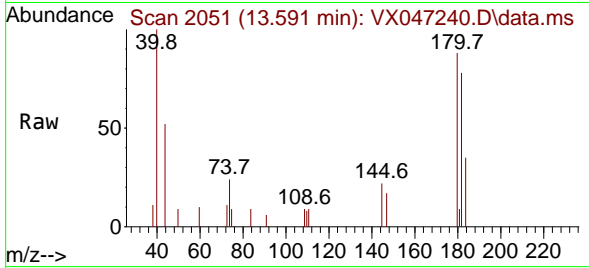
Tgt Ion: 75 Resp: 94679  
 Ion Ratio Lower Upper  
 75 100  
 53 0.0 84.2 126.4#  
 89 0.0 36.0 54.0#



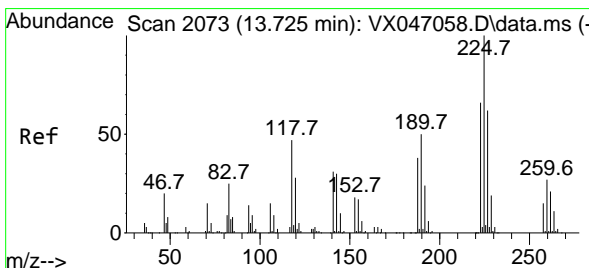
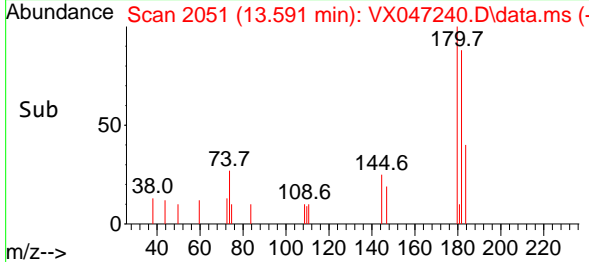
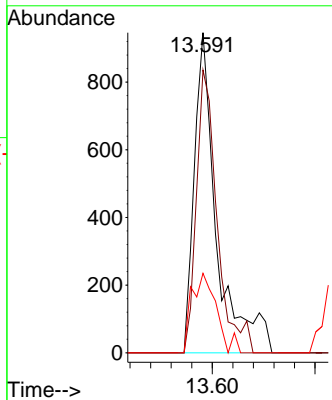


#93  
 1,2,4-Trichlorobenzene  
 Concen: 0.310 ug/l  
 RT: 13.591 min Scan# 2051  
 Delta R.T. 0.006 min  
 Lab File: VX047240.D  
 Acq: 06 Aug 2025 11:52

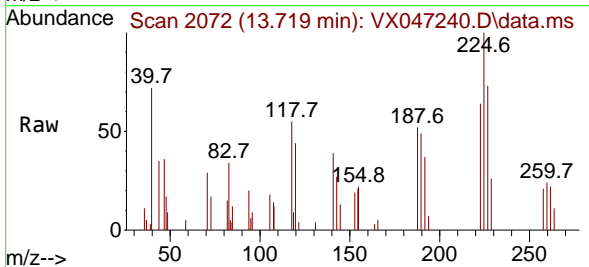
Instrument :  
 MSVOA\_X  
 ClientSampleId :  
 VX0806WBL01



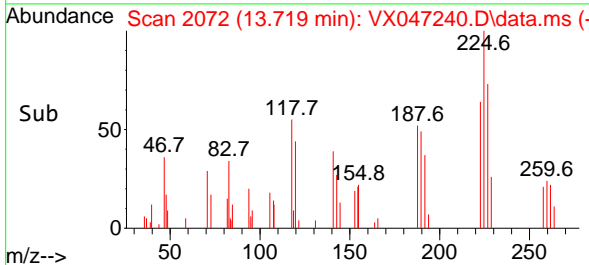
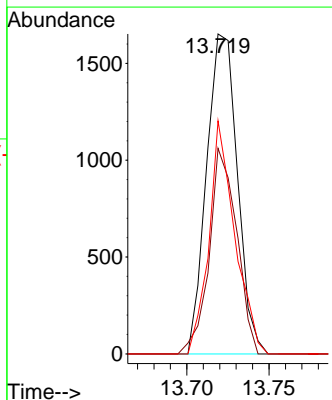
Tgt Ion:180 Resp: 1437  
 Ion Ratio Lower Upper  
 180 100  
 182 81.4 47.3 141.8  
 145 27.2 16.4 49.1

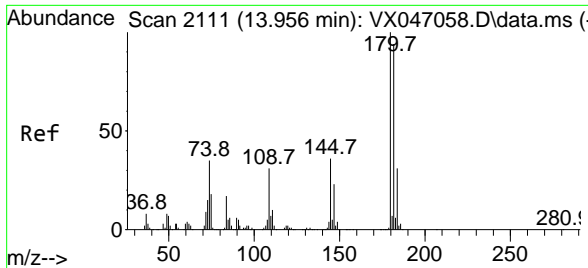


#94  
 Hexachlorobutadiene  
 Concen: 1.367 ug/l  
 RT: 13.719 min Scan# 2072  
 Delta R.T. -0.006 min  
 Lab File: VX047240.D  
 Acq: 06 Aug 2025 11:52



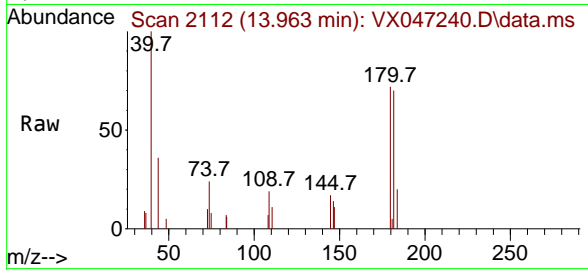
Tgt Ion:225 Resp: 2151  
 Ion Ratio Lower Upper  
 225 100  
 223 57.2 31.6 95.0  
 227 61.0 32.9 98.6





#96  
 1,2,3-Trichlorobenzene  
 Concen: 0.214 ug/l  
 RT: 13.963 min Scan# 21  
 Delta R.T. 0.006 min  
 Lab File: VX047240.D  
 Acq: 06 Aug 2025 11:52

Instrument :  
 MSVOA\_X  
 ClientSampleId :  
 VX0806W/BL01



Tgt Ion:180 Resp: 953

Ion	Ratio	Lower	Upper
180	100		
182	98.4	46.9	140.6
145	31.7	17.3	52.0

