

Data Path : Z:\voasrv\HPCHEM1\MSVOA_X\Data\VX080625\
 Data File : VX047244.D
 Acq On : 06 Aug 2025 13:36
 Operator : JC/MD
 Sample : Q2763-04
 Misc : 5.0mL/MSVOA_X/WATER
 ALS Vial : 8 Sample Multiplier: 1

Instrument :
 MSVOA_X
 ClientSampleId :
 TP-2

Quant Time: Aug 07 01:17:22 2025
 Quant Method : Z:\voasrv\HPCHEM1\MSVOA_X\Method\82X072125W.M
 Quant Title : SW846 8260
 QLast Update : Tue Jul 22 03:59:51 2025
 Response via : Initial Calibration

Compound	R.T.	QIon	Response	Conc	Units	Dev(Min)

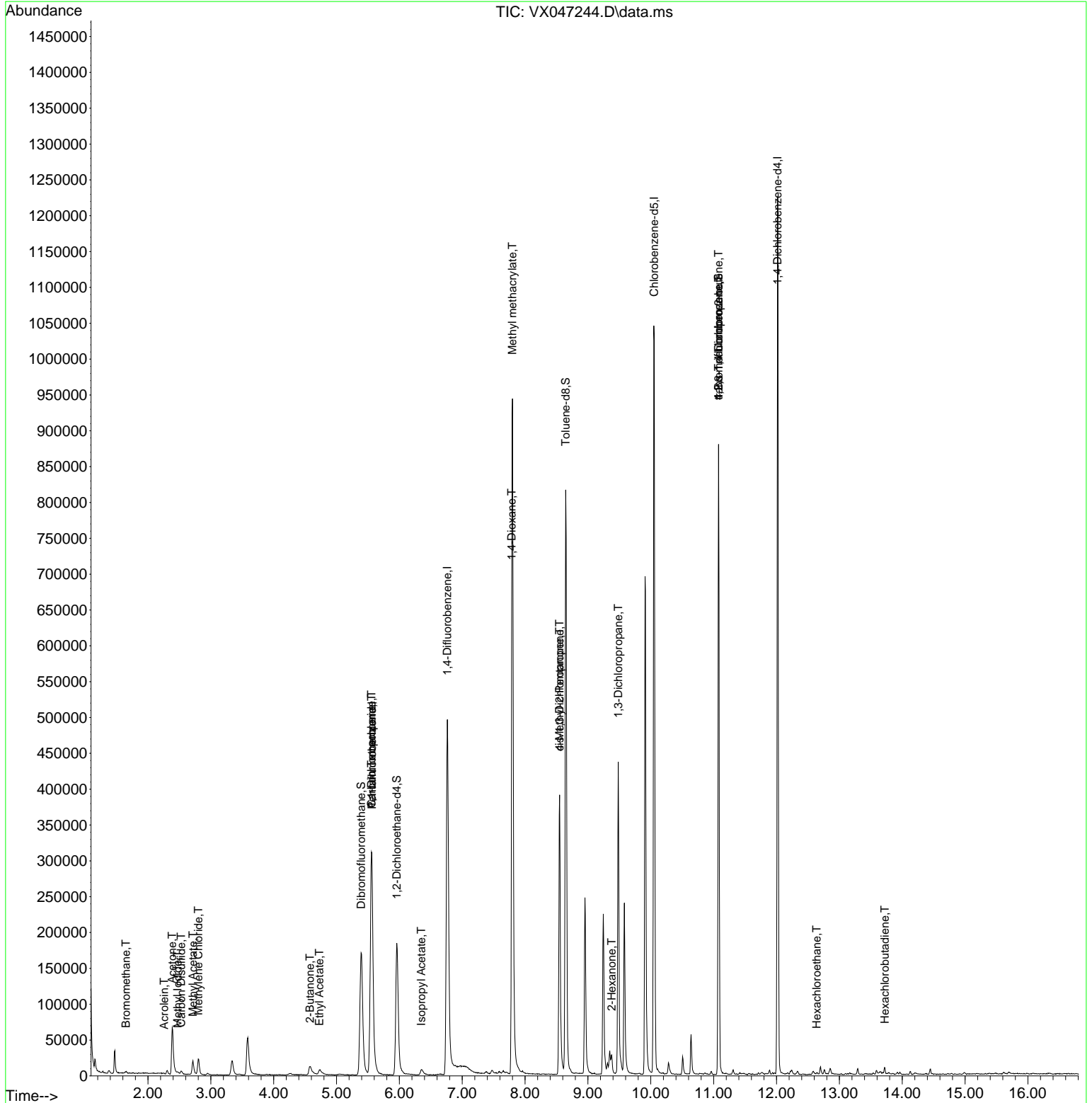
Internal Standards						
1) Pentafluorobenzene	5.562	168	313399	50.000	ug/l	0.00
34) 1,4-Difluorobenzene	6.763	114	531979	50.000	ug/l	0.00
63) Chlorobenzene-d5	10.055	117	476787	50.000	ug/l	0.00
72) 1,4-Dichlorobenzene-d4	12.018	152	240511	50.000	ug/l	0.00
System Monitoring Compounds						
33) 1,2-Dichloroethane-d4	5.958	65	193336	49.523	ug/l	0.00
Spiked Amount	50.000	Range 78 - 117	Recovery	=	99.040%	
35) Dibromofluoromethane	5.391	113	167100	50.874	ug/l	0.00
Spiked Amount	50.000	Range 75 - 124	Recovery	=	101.740%	
50) Toluene-d8	8.647	98	492543	46.304	ug/l	0.00
Spiked Amount	50.000	Range 92 - 112	Recovery	=	92.600%	
62) 4-Bromofluorobenzene	11.079	95	233771	50.997	ug/l	0.00
Spiked Amount	50.000	Range 83 - 123	Recovery	=	102.000%	
Target Compounds						
						Qvalue
5) Bromomethane	1.648	94	841	0.350	ug/l #	75
10) Methyl Iodide	2.471	142	3385	0.835	ug/l #	79
11) Tert butyl alcohol	2.965	59	513	Below Cal	#	72
13) Acrolein	2.258	56	433	0.515	ug/l #	50
16) Acetone	2.386	43	94324	60.312	ug/l	100
17) Carbon Disulfide	2.526	76	4877	0.428	ug/l #	76
18) Methyl Acetate	2.715	43	26780	6.444	ug/l	95
20) Methylene Chloride	2.800	84	10532	2.448	ug/l #	89
25) 2-Butanone	4.574	43	28931	12.705	ug/l	94
36) 1,1-Dichloropropene	5.556	75	25319	4.522	ug/l #	48
37) Ethyl Acetate	4.727	43	17544	3.401	ug/l	95
38) Carbon Tetrachloride	5.556	117	32698	5.472	ug/l #	17
43) Isopropyl Acetate	6.348	43	12661	1.574	ug/l #	78
48) Methyl methacrylate	7.799	41	90085	20.560	ug/l #	47
49) 1,4-Dioxane	7.787	88	84	1.686	ug/l #	1
51) 4-Methyl-2-Pentanone	8.549	43	146204	30.583	ug/l #	50
54) cis-1,3-Dichloropropene	8.549	75	65662	10.488	ug/l #	61
57) 1,3-Dichloropropane	9.482	76	3786	0.583	ug/l #	43
59) 2-Hexanone	9.378	43	20591	6.519	ug/l #	25
76) 1,2,3-Trichloropropane	11.079	75	121947	27.393	ug/l #	35
81) trans-1,4-Dichloro-2-b...	11.079	75	121947	70.576	ug/l #	8
90) Hexachloroethane	12.640	117	923	0.316	ug/l #	15
94) Hexachlorobutadiene	13.725	225	1404	0.756	ug/l	85

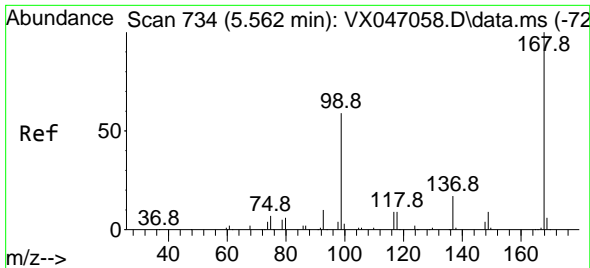
(#) = qualifier out of range (m) = manual integration (+) = signals summed

Data Path : Z:\voasrv\HPCHEM1\MSVOA_X\Data\VX080625\
 Data File : VX047244.D
 Acq On : 06 Aug 2025 13:36
 Operator : JC/MD
 Sample : Q2763-04
 Misc : 5.0mL/MSVOA_X/WATER
 ALS Vial : 8 Sample Multiplier: 1

Instrument :
 MSVOA_X
 ClientSampleId :
 TP-2

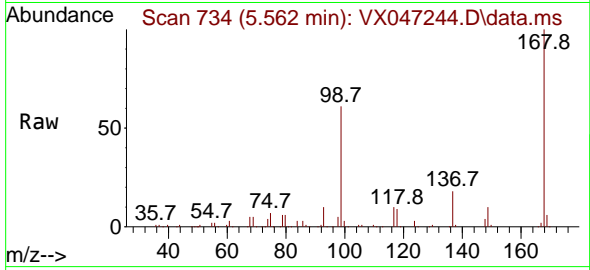
Quant Time: Aug 07 01:17:22 2025
 Quant Method : Z:\voasrv\HPCHEM1\MSVOA_X\Method\82X072125W.M
 Quant Title : SW846 8260
 QLast Update : Tue Jul 22 03:59:51 2025
 Response via : Initial Calibration



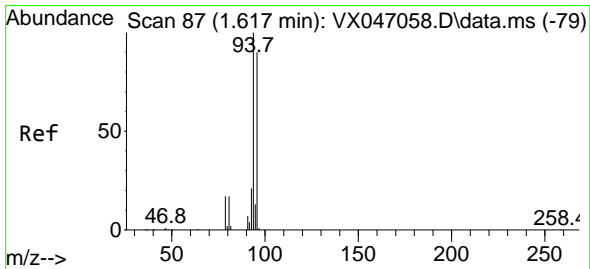
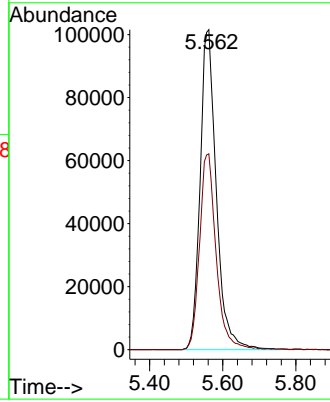
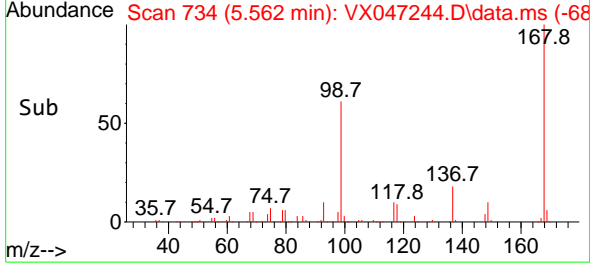


#1
 Pentafluorobenzene
 Concen: 50.000 ug/l
 RT: 5.562 min Scan# 71
 Delta R.T. -0.000 min
 Lab File: VX047244.D
 Acq: 06 Aug 2025 13:36

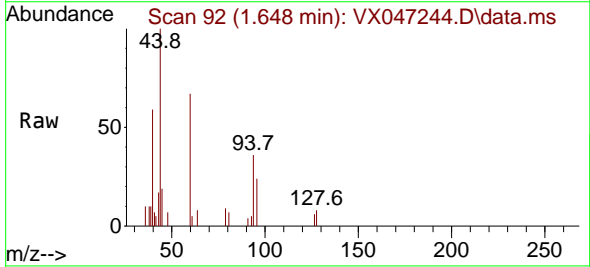
Instrument :
 MSVOA_X
 ClientSampled :
 TP-2



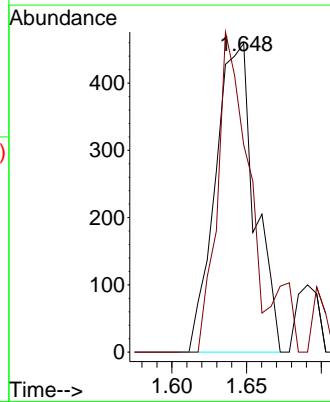
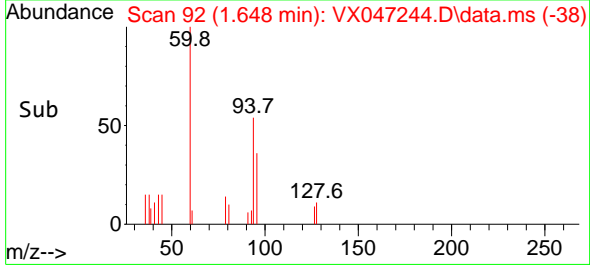
Tgt Ion:168 Resp: 313399
 Ion Ratio Lower Upper
 168 100
 99 61.2 48.0 72.0

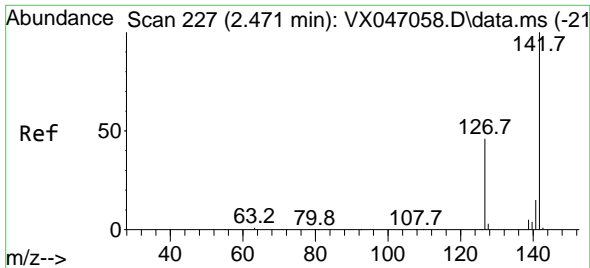


#5
 Bromomethane
 Concen: 0.350 ug/l
 RT: 1.648 min Scan# 92
 Delta R.T. 0.031 min
 Lab File: VX047244.D
 Acq: 06 Aug 2025 13:36



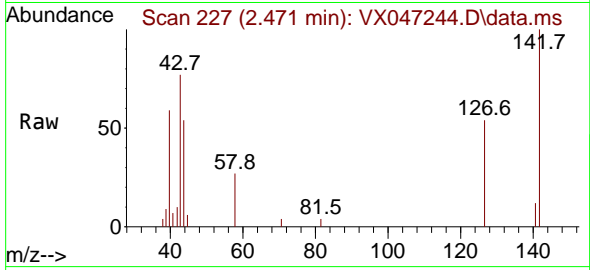
Tgt Ion: 94 Resp: 841
 Ion Ratio Lower Upper
 94 100
 96 67.1 72.3 108.5#



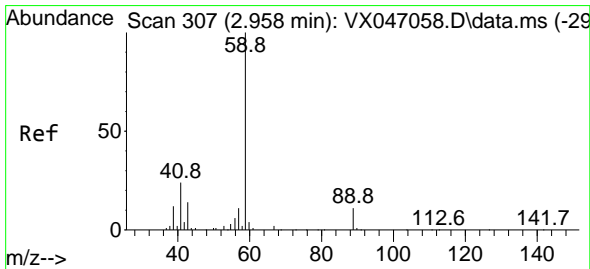
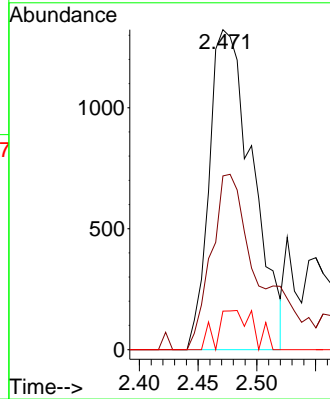
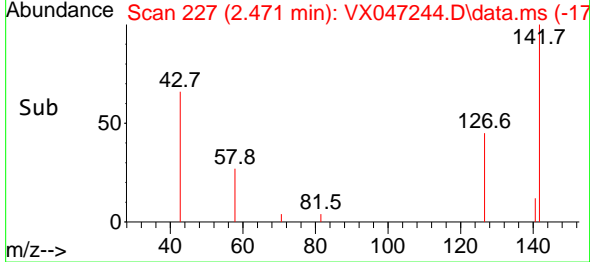


#10
Methyl Iodide
Concen: 0.835 ug/l
RT: 2.471 min Scan# 21
Delta R.T. 0.000 min
Lab File: VX047244.D
Acq: 06 Aug 2025 13:36

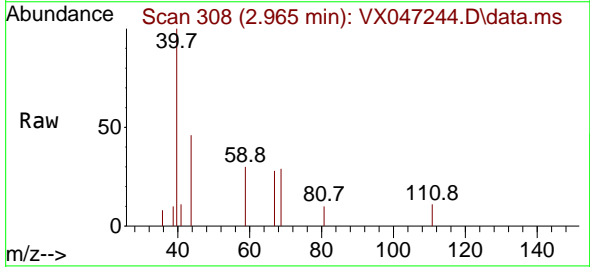
Instrument : MSVOA_X
ClientSampleId : TP-2



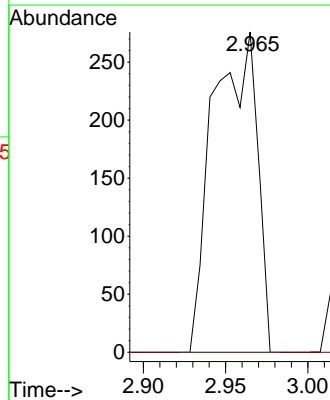
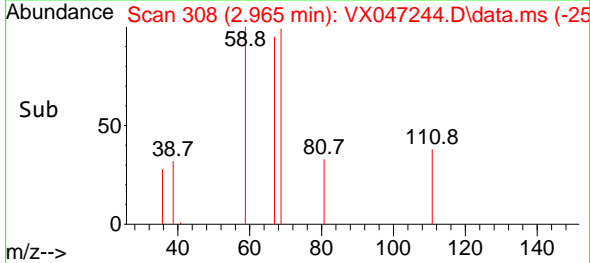
Tgt Ion:142 Resp: 3385
Ion Ratio Lower Upper
142 100
127 62.1 36.6 54.8#
141 10.4 10.9 16.3#

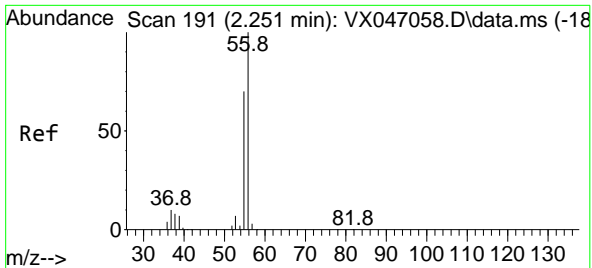


#11
Tert butyl alcohol
Concen: Below Cal
RT: 2.965 min Scan# 308
Delta R.T. 0.007 min
Lab File: VX047244.D
Acq: 06 Aug 2025 13:36



Tgt Ion: 59 Resp: 513
Ion Ratio Lower Upper
59 100
57 0.0 8.5 12.7#

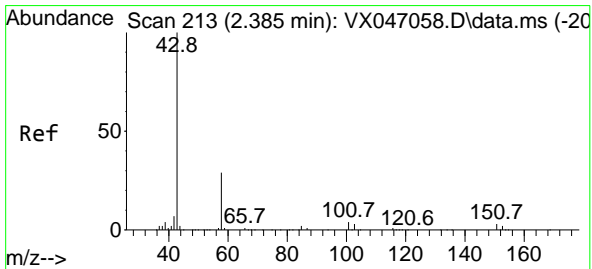
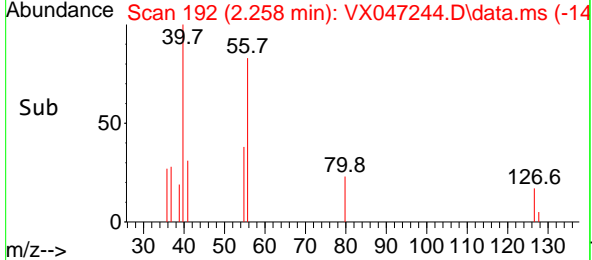
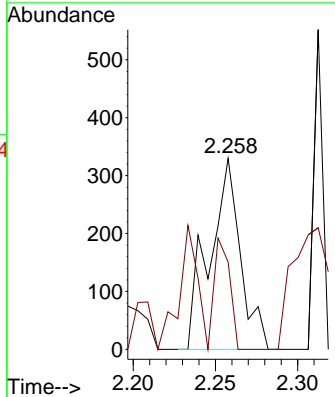
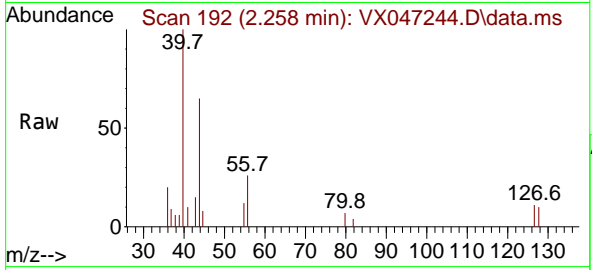




#13
 Acrolein
 Concen: 0.515 ug/l
 RT: 2.258 min Scan# 191
 Delta R.T. 0.006 min
 Lab File: VX047244.D
 Acq: 06 Aug 2025 13:36

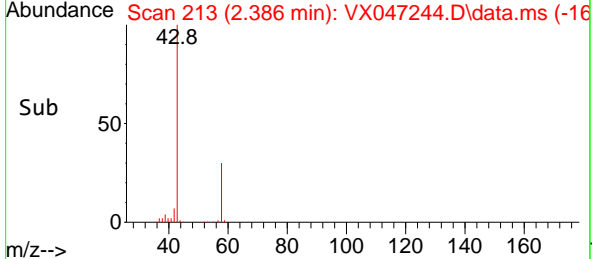
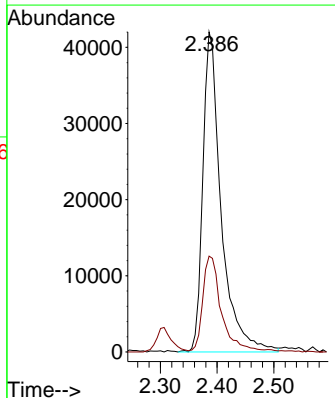
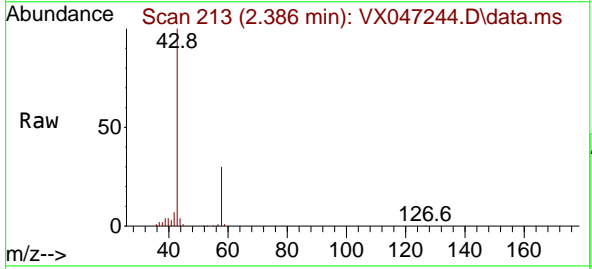
Instrument : MSVOA_X
 ClientSampleId : TP-2

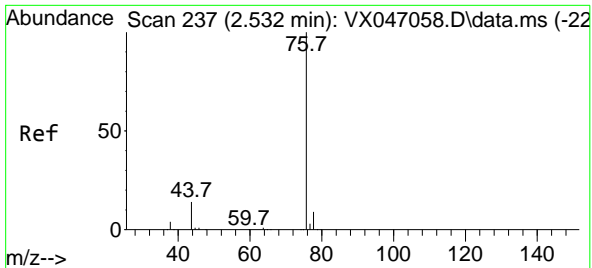
Tgt Ion: 56 Resp: 433
 Ion Ratio Lower Upper
 56 100
 55 28.9 55.7 83.5#



#16
 Acetone
 Concen: 60.312 ug/l
 RT: 2.386 min Scan# 213
 Delta R.T. 0.000 min
 Lab File: VX047244.D
 Acq: 06 Aug 2025 13:36

Tgt Ion: 43 Resp: 94324
 Ion Ratio Lower Upper
 43 100
 58 29.9 24.0 36.0

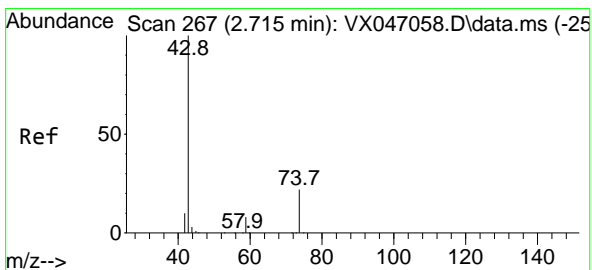
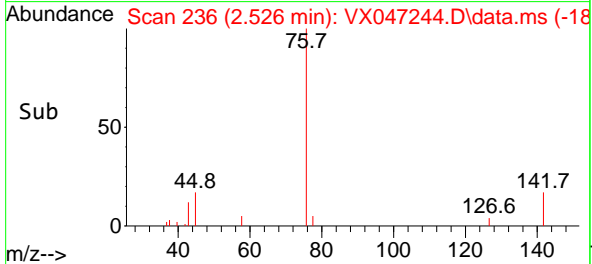
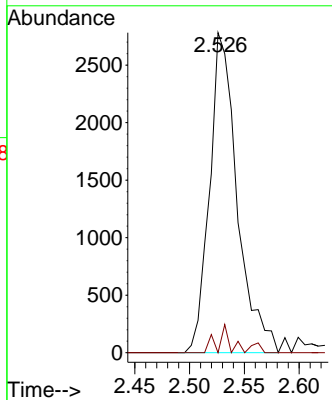
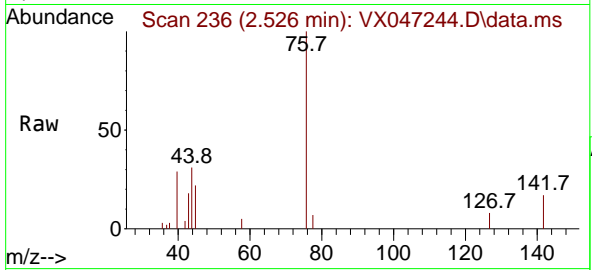




#17
 Carbon Disulfide
 Concen: 0.428 ug/l
 RT: 2.526 min Scan# 21
 Delta R.T. -0.006 min
 Lab File: VX047244.D
 Acq: 06 Aug 2025 13:36

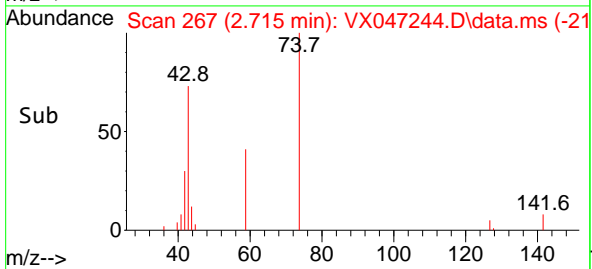
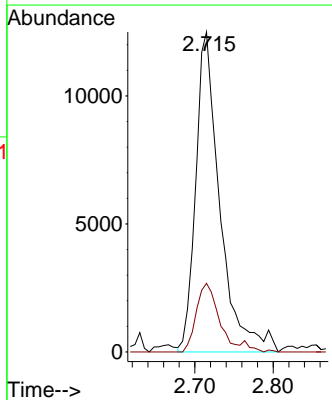
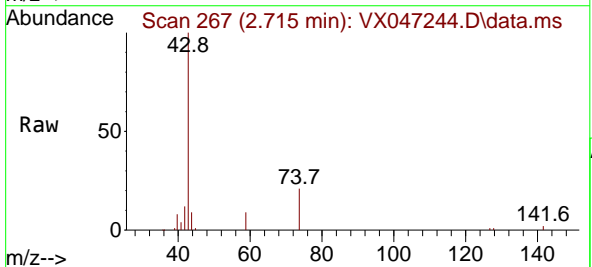
Instrument : MSVOA_X
 ClientSampleId : TP-2

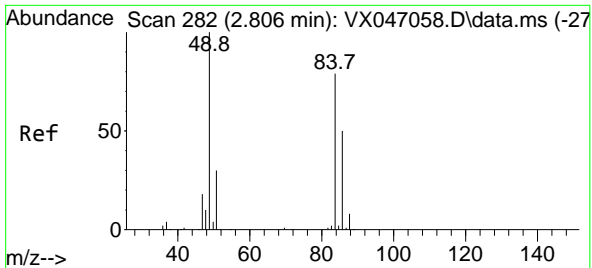
Tgt Ion: 76 Resp: 4877
 Ion Ratio Lower Upper
 76 100
 78 0.0 7.0 10.4#



#18
 Methyl Acetate
 Concen: 6.444 ug/l
 RT: 2.715 min Scan# 267
 Delta R.T. 0.000 min
 Lab File: VX047244.D
 Acq: 06 Aug 2025 13:36

Tgt Ion: 43 Resp: 26780
 Ion Ratio Lower Upper
 43 100
 74 19.9 17.7 26.5

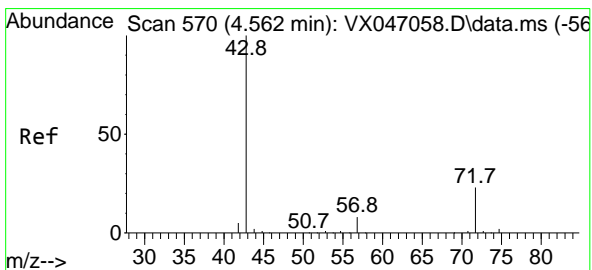
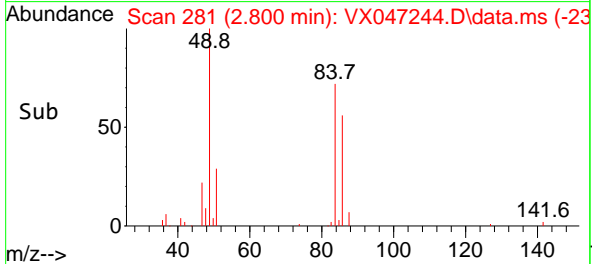
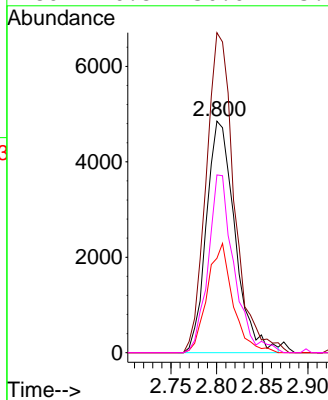
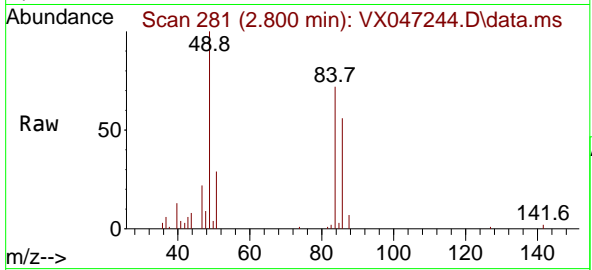




#20
 Methylene Chloride
 Concen: 2.448 ug/l
 RT: 2.800 min Scan# 21
 Delta R.T. -0.006 min
 Lab File: VX047244.D
 Acq: 06 Aug 2025 13:36

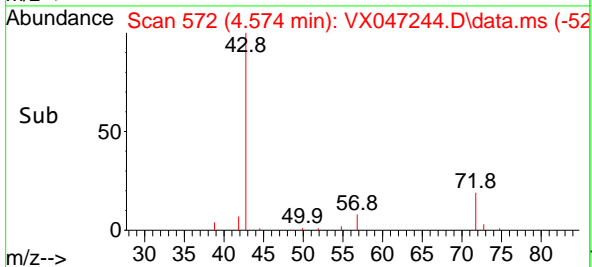
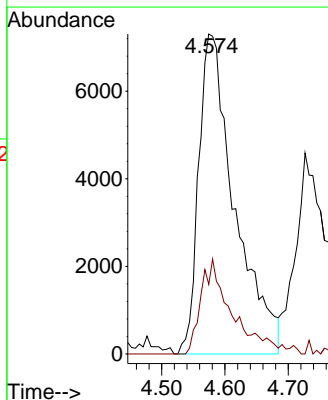
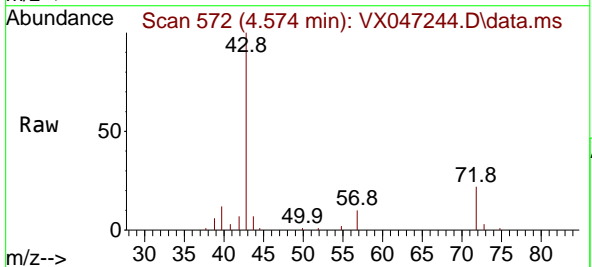
Instrument :
 MSVOA_X
 ClientSampleId :
 TP-2

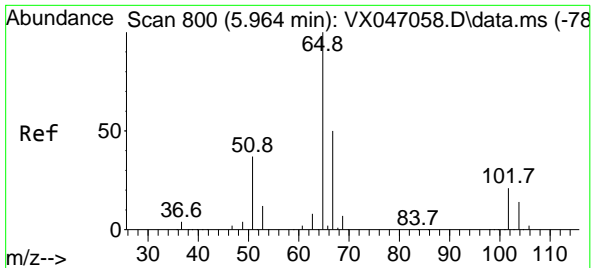
Tgt Ion: 84 Resp: 10532
 Ion Ratio Lower Upper
 84 100
 49 138.2 101.6 152.4
 51 40.8 30.3 45.5
 86 76.8 50.6 75.8#



#25
 2-Butanone
 Concen: 12.705 ug/l
 RT: 4.574 min Scan# 572
 Delta R.T. 0.013 min
 Lab File: VX047244.D
 Acq: 06 Aug 2025 13:36

Tgt Ion: 43 Resp: 28931
 Ion Ratio Lower Upper
 43 100
 72 20.3 18.8 28.2

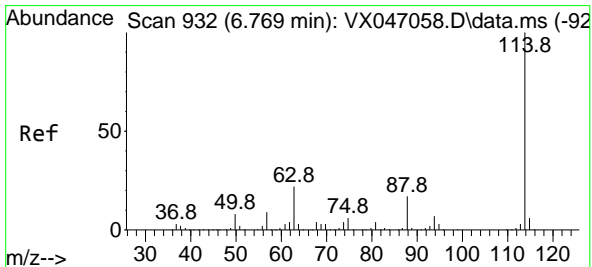
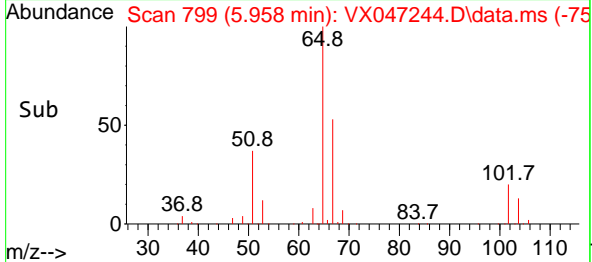
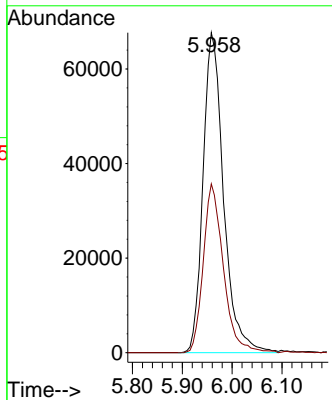
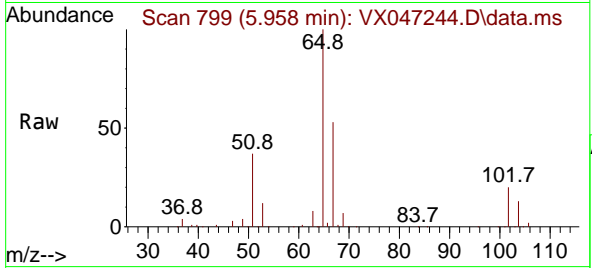




#33
 1,2-Dichloroethane-d4
 Concen: 49.523 ug/l
 RT: 5.958 min Scan# 799
 Delta R.T. -0.006 min
 Lab File: VX047244.D
 Acq: 06 Aug 2025 13:36

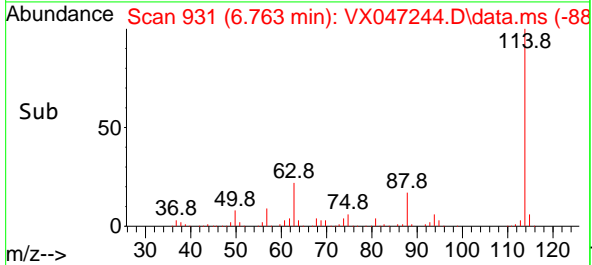
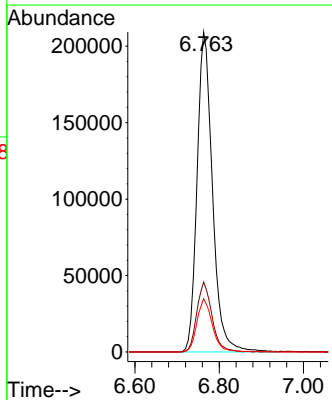
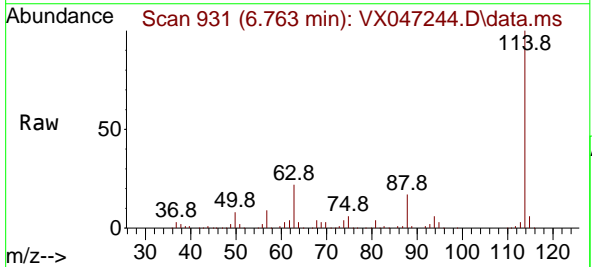
Instrument : MSVOA_X
 ClientSampleId : TP-2

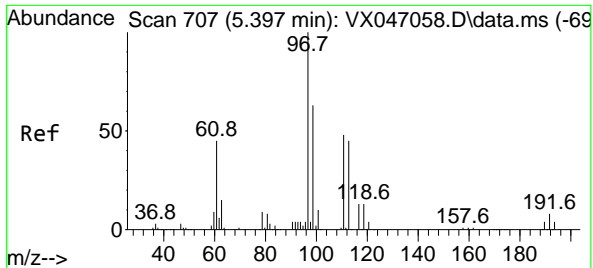
Tgt Ion: 65 Resp: 193336
 Ion Ratio Lower Upper
 65 100
 67 51.7 0.0 104.8



#34
 1,4-Difluorobenzene
 Concen: 50.000 ug/l
 RT: 6.763 min Scan# 931
 Delta R.T. -0.006 min
 Lab File: VX047244.D
 Acq: 06 Aug 2025 13:36

Tgt Ion: 114 Resp: 531979
 Ion Ratio Lower Upper
 114 100
 63 21.9 0.0 43.2
 88 16.6 0.0 33.8

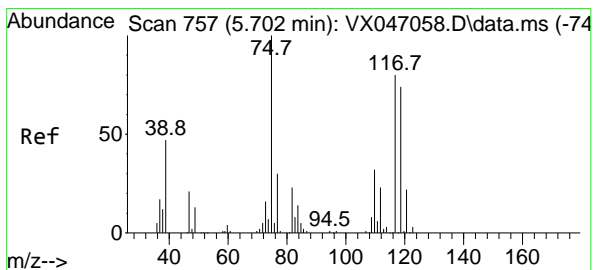
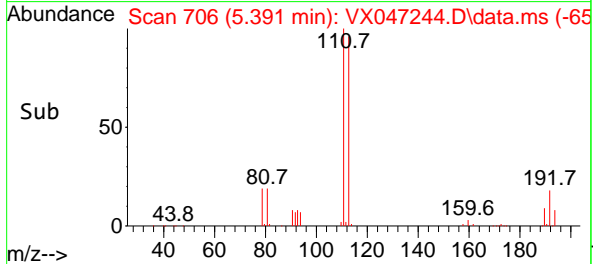
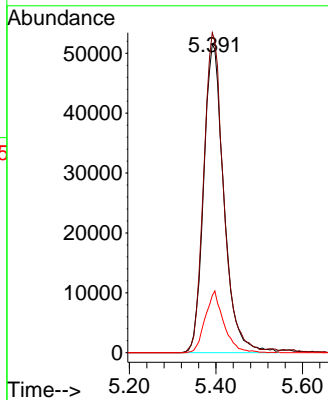
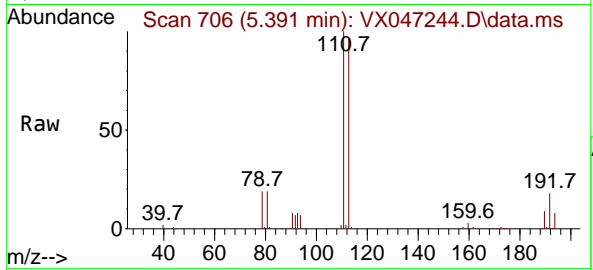




#35
 Dibromofluoromethane
 Concen: 50.874 ug/l
 RT: 5.391 min Scan# 707
 Delta R.T. -0.006 min
 Lab File: VX047244.D
 Acq: 06 Aug 2025 13:36

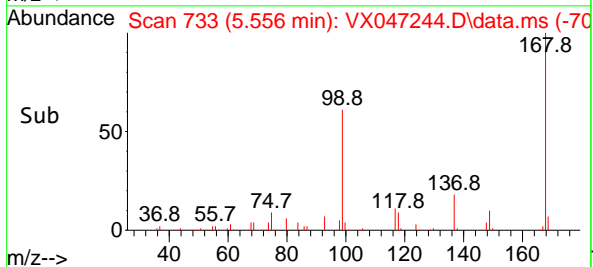
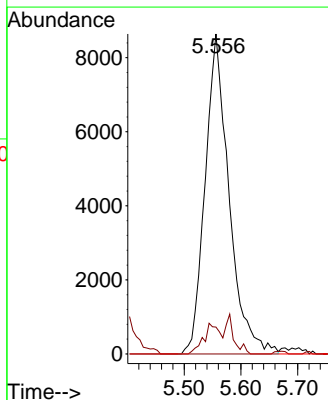
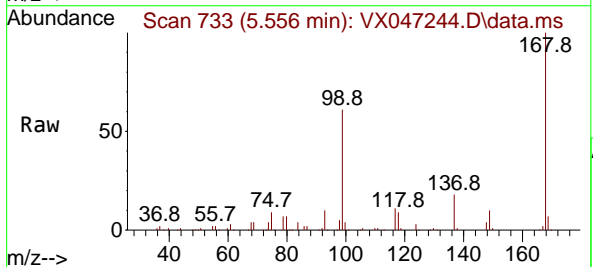
Instrument :
 MSVOA_X
 ClientSampleId :
 TP-2

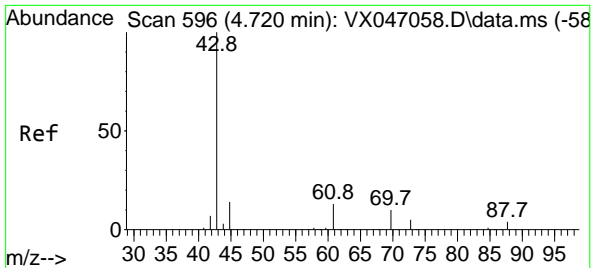
Tgt Ion:113 Resp: 167100
 Ion Ratio Lower Upper
 113 100
 111 102.0 82.6 124.0
 192 18.4 14.9 22.3



#36
 1,1-Dichloropropene
 Concen: 4.522 ug/l
 RT: 5.556 min Scan# 733
 Delta R.T. -0.146 min
 Lab File: VX047244.D
 Acq: 06 Aug 2025 13:36

Tgt Ion: 75 Resp: 25319
 Ion Ratio Lower Upper
 75 100
 110 6.6 17.2 51.5#
 77 0.0 25.1 37.7#

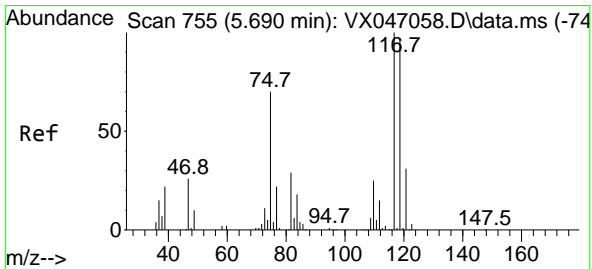
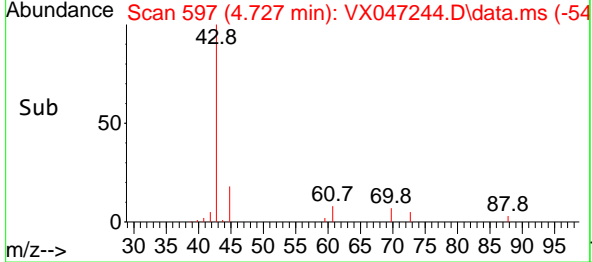
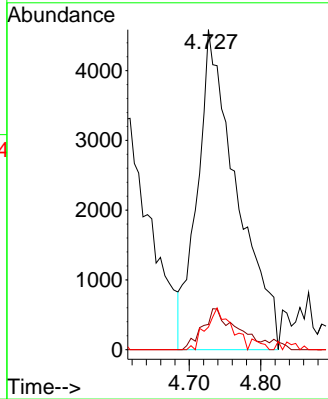
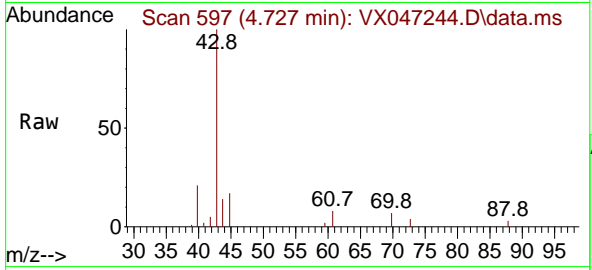




#37
 Ethyl Acetate
 Concen: 3.401 ug/l
 RT: 4.727 min Scan# 597
 Delta R.T. 0.006 min
 Lab File: VX047244.D
 Acq: 06 Aug 2025 13:36

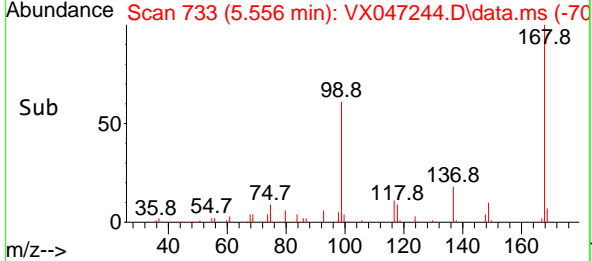
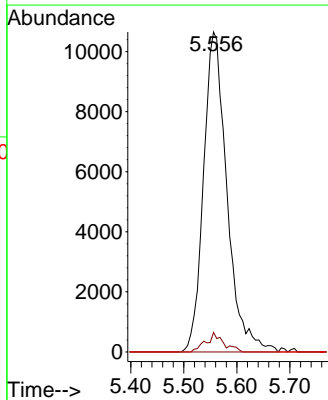
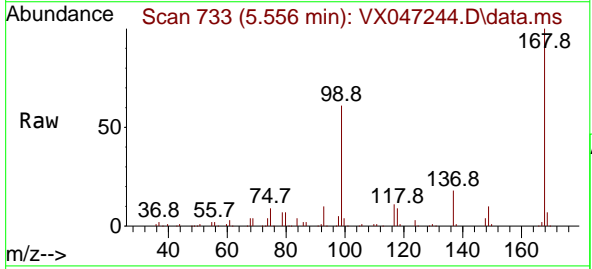
Instrument : MSVOA_X
 ClientSampleId : TP-2

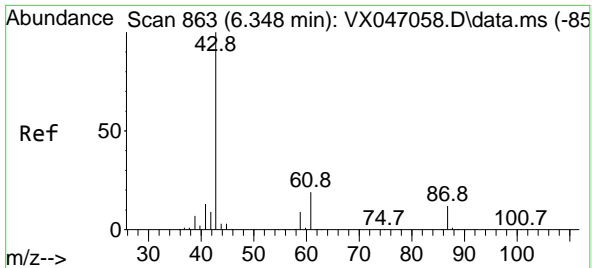
Tgt Ion	Resp	Lower	Upper
43	17544		
43	100		
61	11.0	10.2	15.2
70	8.2	8.1	12.1



#38
 Carbon Tetrachloride
 Concen: 5.472 ug/l
 RT: 5.556 min Scan# 733
 Delta R.T. -0.134 min
 Lab File: VX047244.D
 Acq: 06 Aug 2025 13:36

Tgt Ion	Resp	Lower	Upper
117	32698		
117	100		
119	6.1	76.6	115.0#
121	0.0	24.4	36.6#

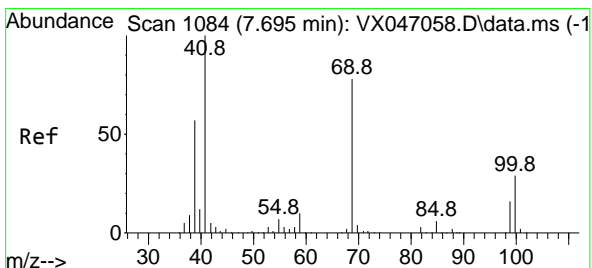
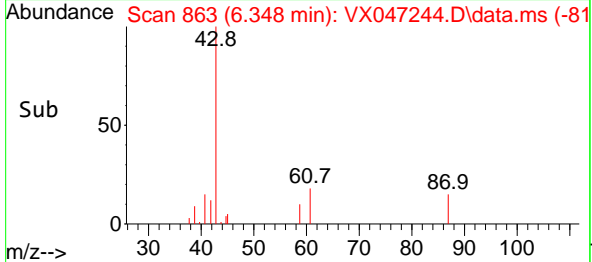
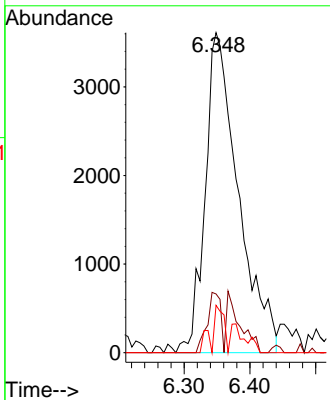
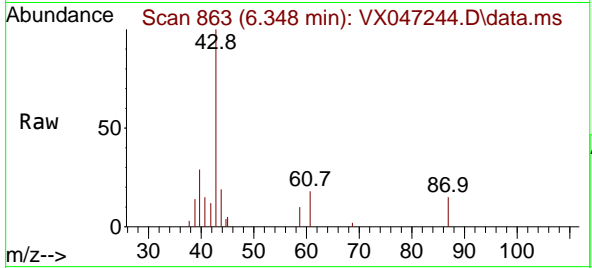




#43
 Isopropyl Acetate
 Concen: 1.574 ug/l
 RT: 6.348 min Scan# 80
 Delta R.T. 0.000 min
 Lab File: VX047244.D
 Acq: 06 Aug 2025 13:36

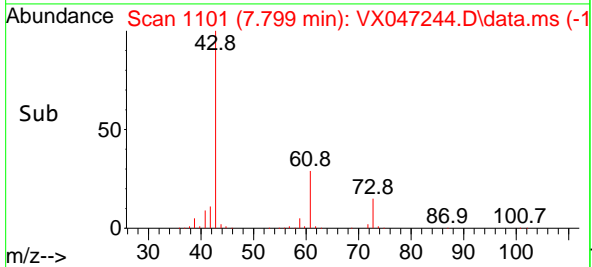
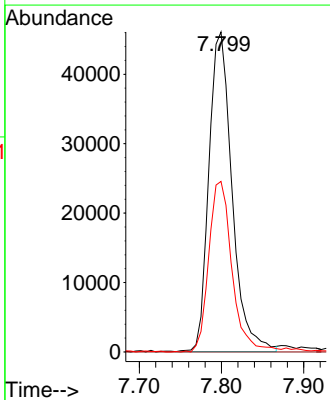
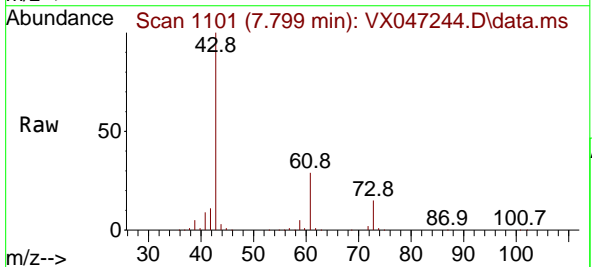
Instrument :
 MSVOA_X
 ClientSampleId :
 TP-2

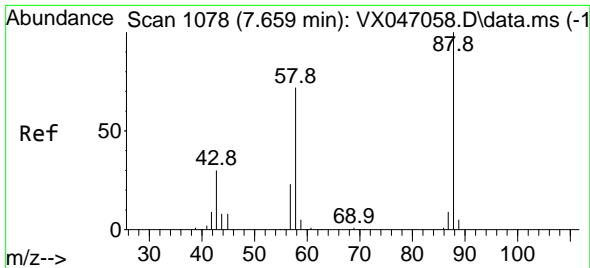
Tgt Ion	Resp	Lower	Upper
43	12661		
61	7.6	15.1	22.7#
87	5.6	9.7	14.5#



#48
 Methyl methacrylate
 Concen: 20.560 ug/l
 RT: 7.799 min Scan# 1101
 Delta R.T. 0.104 min
 Lab File: VX047244.D
 Acq: 06 Aug 2025 13:36

Tgt Ion	Resp	Lower	Upper
41	90085		
69	0.0	62.3	93.5#
39	53.6	44.8	67.2

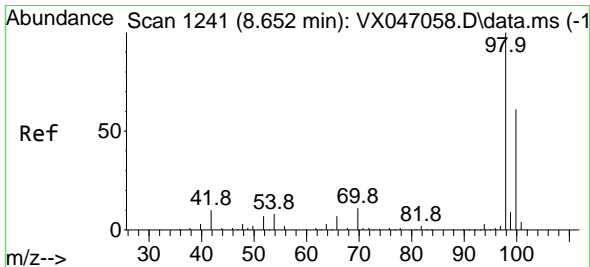
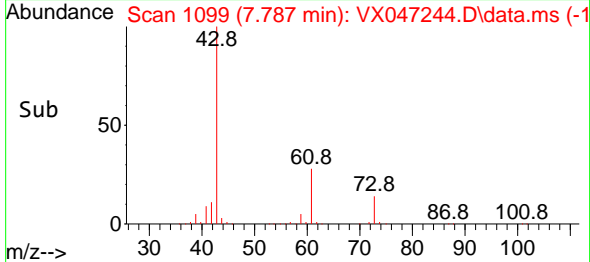
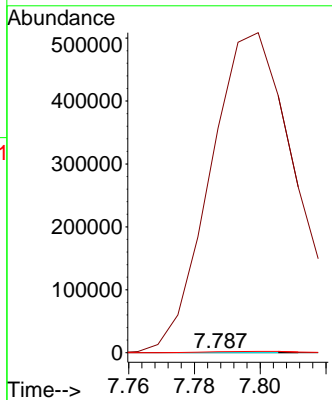
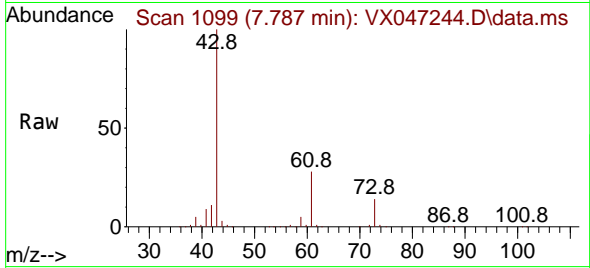




#49
 1,4-Dioxane
 Concen: 1.686 ug/l
 RT: 7.787 min Scan# 1078
 Delta R.T. 0.128 min
 Lab File: VX047244.D
 Acq: 06 Aug 2025 13:36

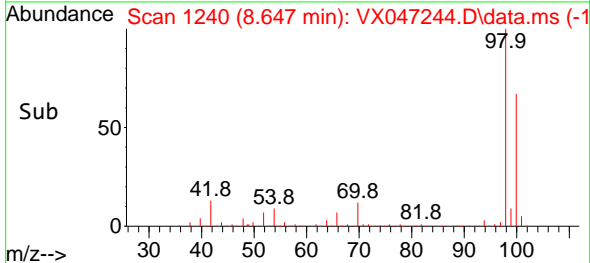
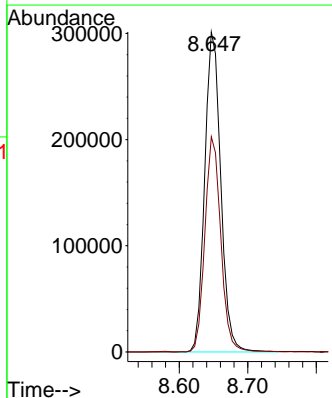
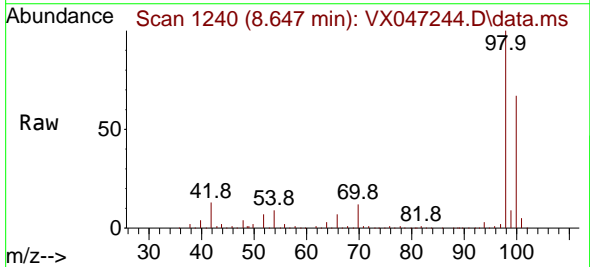
Instrument : MSVOA_X
 ClientSampleId : TP-2

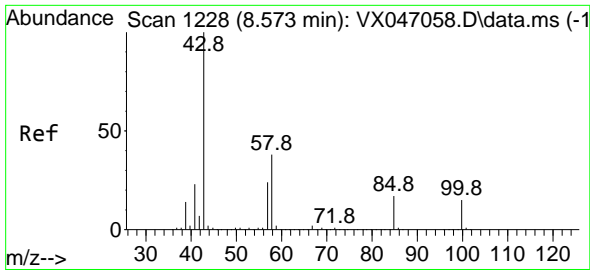
Tgt Ion: 88 Resp: 84
 Ion Ratio Lower Upper
 88 100
 43 1173090.5 33.6 50.4#
 58 4763.1 58.8 88.2#



#50
 Toluene-d8
 Concen: 46.304 ug/l
 RT: 8.647 min Scan# 1240
 Delta R.T. -0.006 min
 Lab File: VX047244.D
 Acq: 06 Aug 2025 13:36

Tgt Ion: 98 Resp: 492543
 Ion Ratio Lower Upper
 98 100
 100 66.7 53.3 79.9

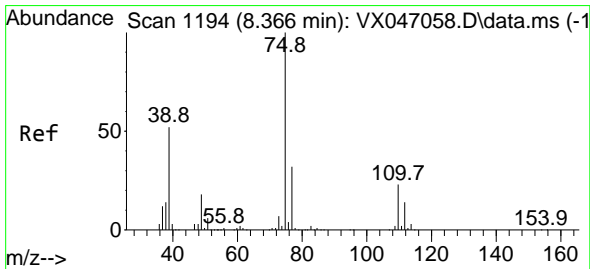
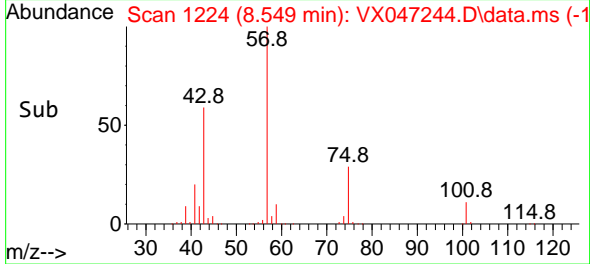
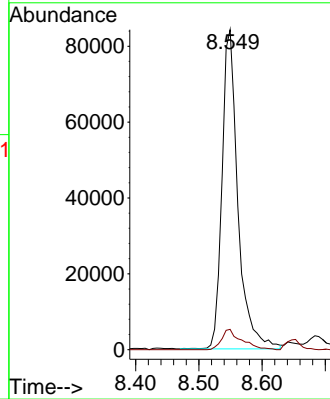
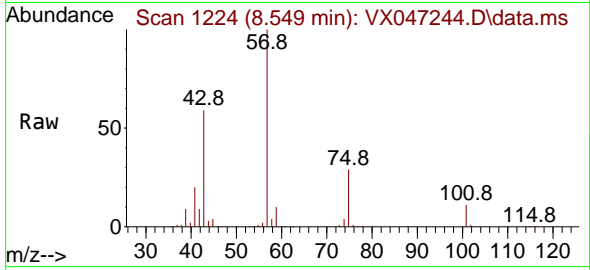




#51
 4-Methyl-2-Pentanone
 Concen: 30.583 ug/l
 RT: 8.549 min Scan# 1194
 Delta R.T. -0.024 min
 Lab File: VX047244.D
 Acq: 06 Aug 2025 13:36

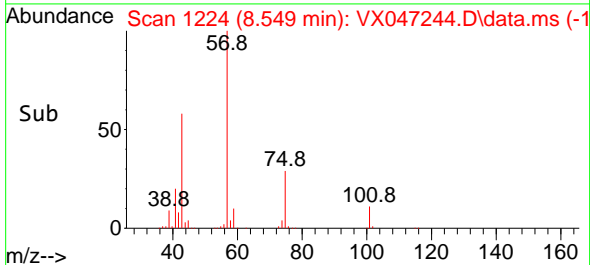
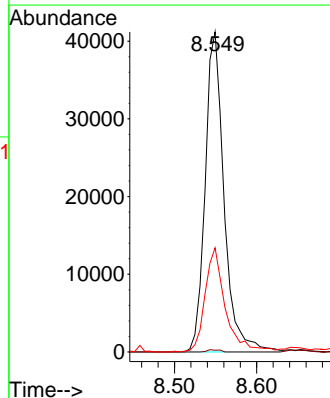
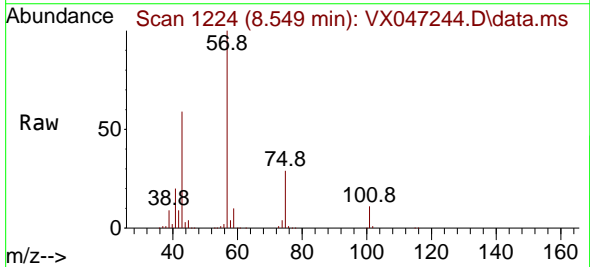
Instrument : MSVOA_X
 ClientSampleId : TP-2

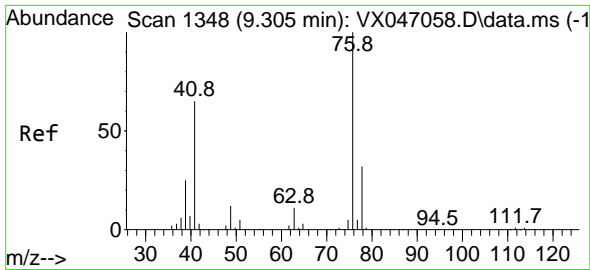
Tgt Ion: 43 Resp: 146204
 Ion Ratio Lower Upper
 43 100
 58 8.0 30.6 45.8#



#54
 cis-1,3-Dichloropropene
 Concen: 10.488 ug/l
 RT: 8.549 min Scan# 1224
 Delta R.T. 0.183 min
 Lab File: VX047244.D
 Acq: 06 Aug 2025 13:36

Tgt Ion: 75 Resp: 65662
 Ion Ratio Lower Upper
 75 100
 77 0.5 25.4 38.0#
 39 32.6 41.8 62.6#

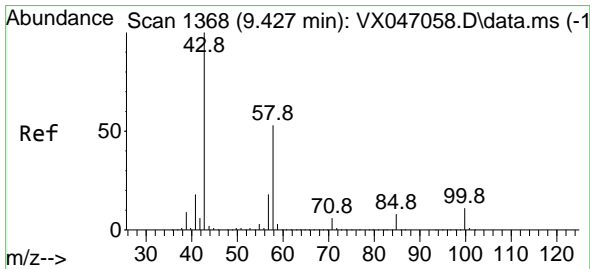
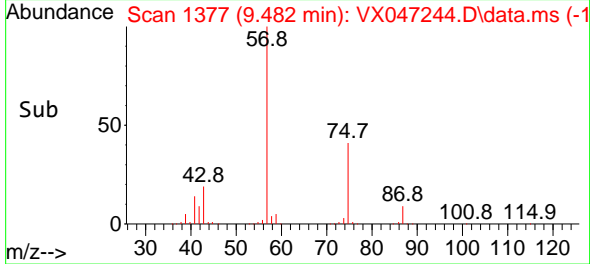
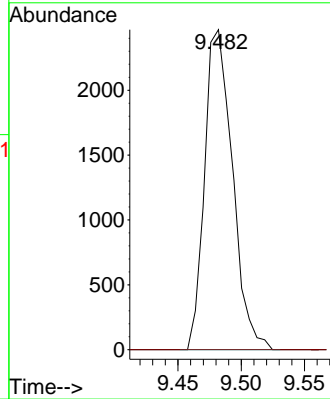
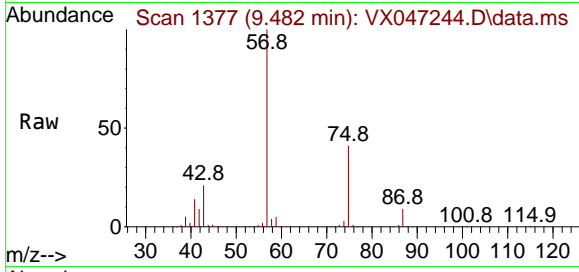




#57
 1,3-Dichloropropane
 Concen: 0.583 ug/l
 RT: 9.482 min Scan# 11
 Delta R.T. 0.177 min
 Lab File: VX047244.D
 Acq: 06 Aug 2025 13:36

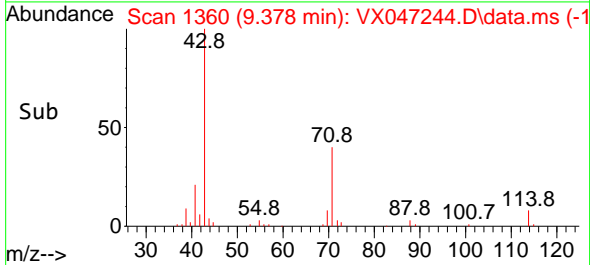
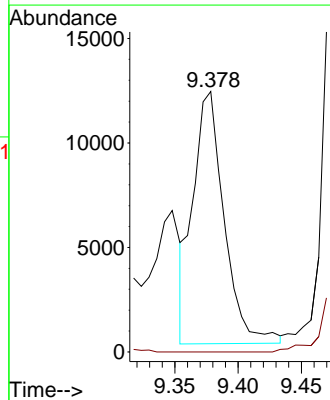
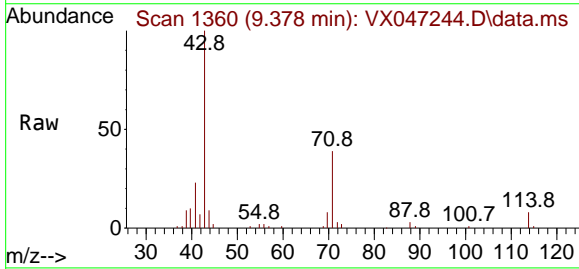
Instrument :
 MSVOA_X
 ClientSampleId :
 TP-2

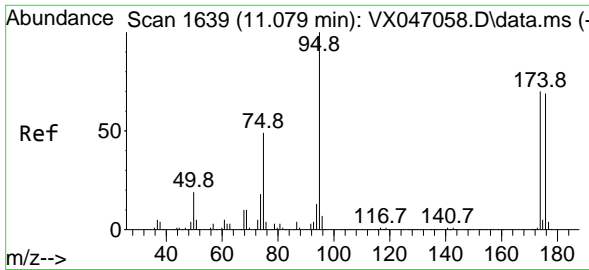
Tgt Ion: 76 Resp: 3786
 Ion Ratio Lower Upper
 76 100
 78 0.0 25.5 38.3#



#59
 2-Hexanone
 Concen: 6.519 ug/l
 RT: 9.378 min Scan# 1360
 Delta R.T. -0.048 min
 Lab File: VX047244.D
 Acq: 06 Aug 2025 13:36

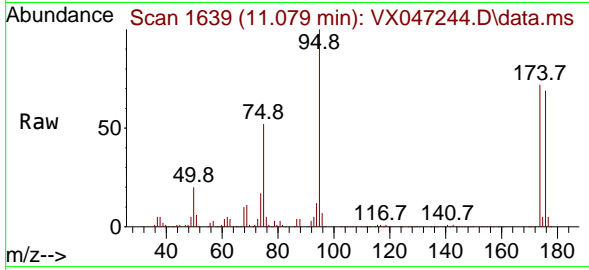
Tgt Ion: 43 Resp: 20591
 Ion Ratio Lower Upper
 43 100
 58 0.0 26.5 79.5#



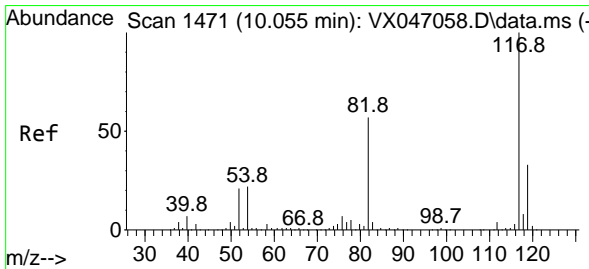
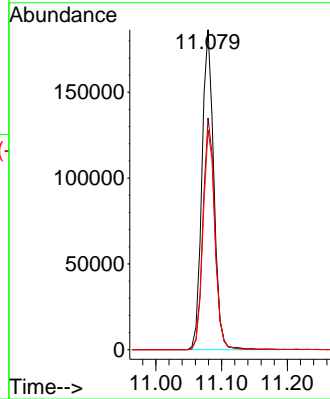
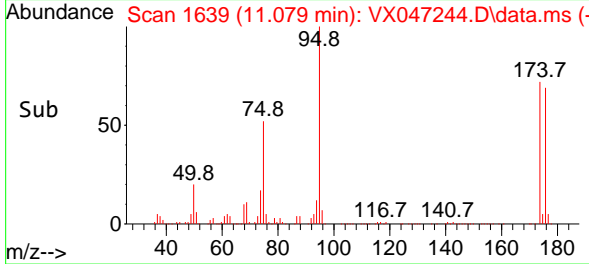


#62
 4-Bromofluorobenzene
 Concen: 50.997 ug/l
 RT: 11.079 min Scan# 1639
 Delta R.T. 0.000 min
 Lab File: VX047244.D
 Acq: 06 Aug 2025 13:36

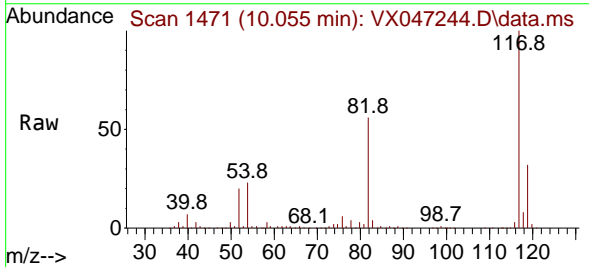
Instrument : MSVOA_X
 ClientSampleId : TP-2



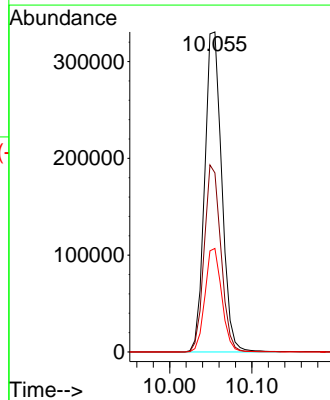
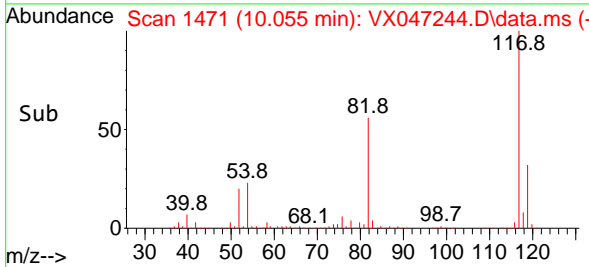
Tgt Ion: 95 Resp: 233771
 Ion Ratio Lower Upper
 95 100
 174 72.3 0.0 144.6
 176 69.1 0.0 139.6

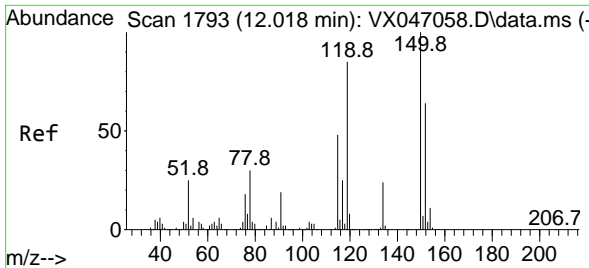


#63
 Chlorobenzene-d5
 Concen: 50.000 ug/l
 RT: 10.055 min Scan# 1471
 Delta R.T. 0.000 min
 Lab File: VX047244.D
 Acq: 06 Aug 2025 13:36



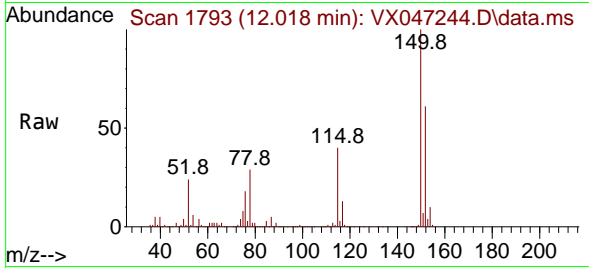
Tgt Ion: 117 Resp: 476787
 Ion Ratio Lower Upper
 117 100
 82 56.0 45.4 68.2
 119 32.4 26.1 39.1



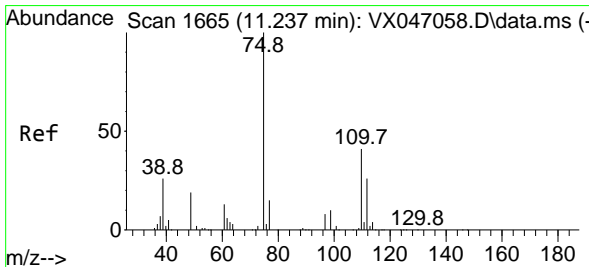
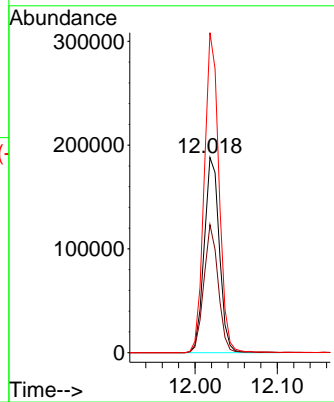
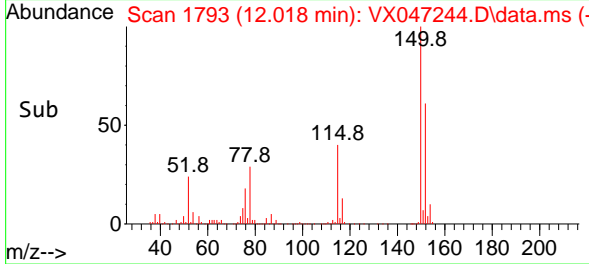


#72
 1,4-Dichlorobenzene-d4
 Concen: 50.000 ug/l
 RT: 12.018 min Scan# 1
 Delta R.T. 0.000 min
 Lab File: VX047244.D
 Acq: 06 Aug 2025 13:36

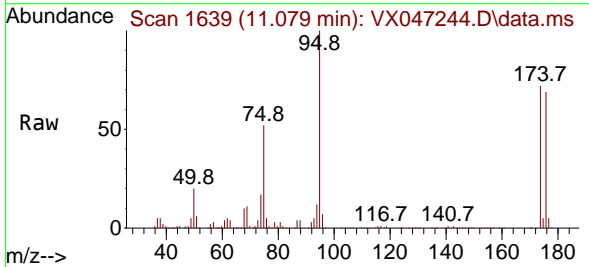
Instrument :
 MSVOA_X
 ClientSampleId :
 TP-2



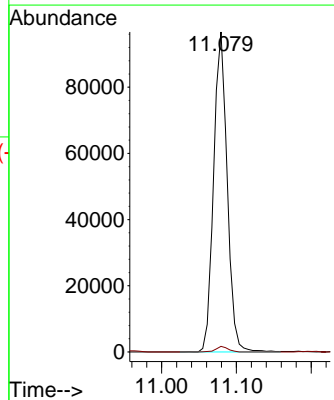
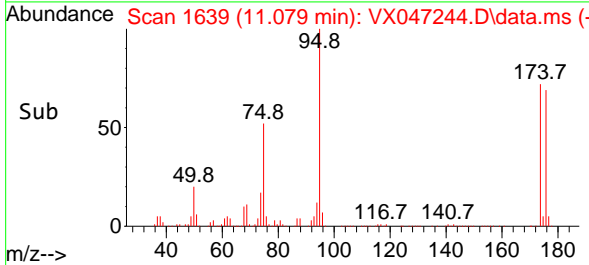
Tgt Ion:152 Resp: 240511
 Ion Ratio Lower Upper
 152 100
 115 62.3 45.6 136.7
 150 159.4 0.0 354.6

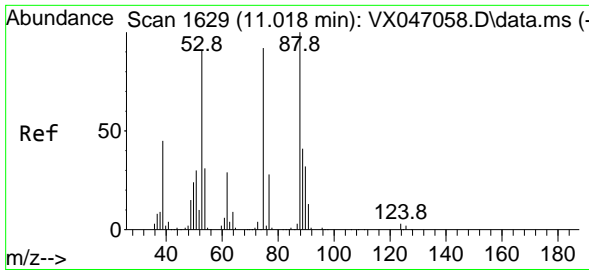


#76
 1,2,3-Trichloropropane
 Concen: 27.393 ug/l
 RT: 11.079 min Scan# 1639
 Delta R.T. -0.158 min
 Lab File: VX047244.D
 Acq: 06 Aug 2025 13:36



Tgt Ion: 75 Resp: 121947
 Ion Ratio Lower Upper
 75 100
 77 1.6 21.6 65.0#

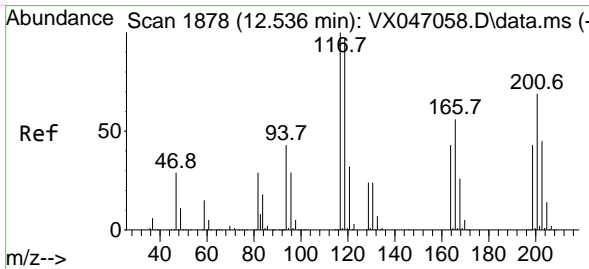
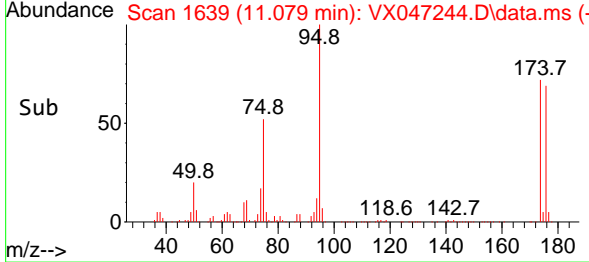
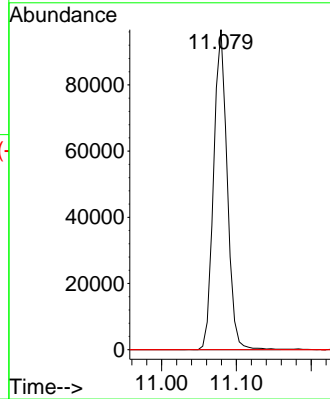
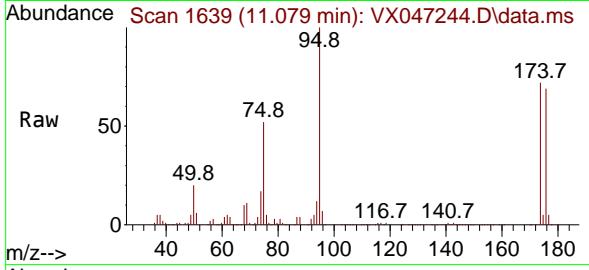




#81
 trans-1,4-Dichloro-2-butene
 Concen: 70.576 ug/l
 RT: 11.079 min Scan# 1
 Delta R.T. 0.061 min
 Lab File: VX047244.D
 Acq: 06 Aug 2025 13:36

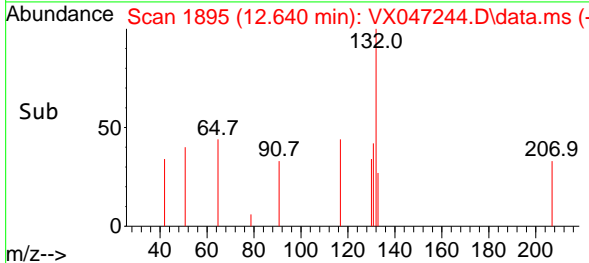
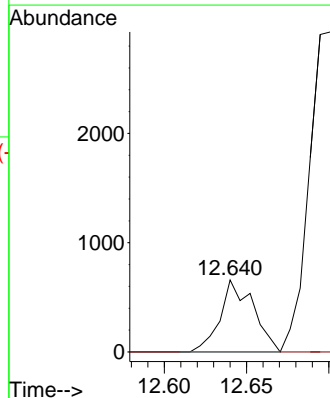
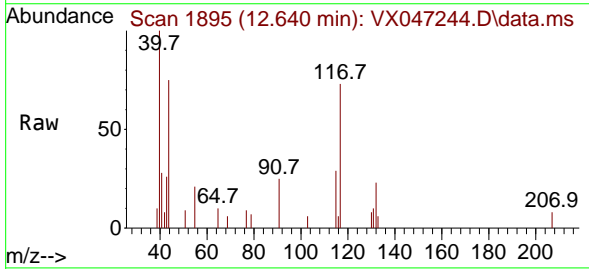
Instrument :
 MSVOA_X
 ClientSampleId :
 TP-2

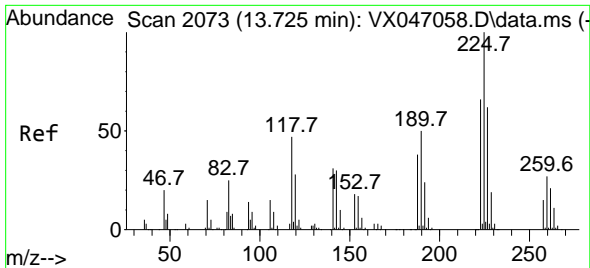
Tgt Ion: 75 Resp: 121947
 Ion Ratio Lower Upper
 75 100
 53 0.0 84.2 126.4#
 89 0.0 36.0 54.0#



#90
 Hexachloroethane
 Concen: 0.316 ug/l
 RT: 12.640 min Scan# 1895
 Delta R.T. 0.104 min
 Lab File: VX047244.D
 Acq: 06 Aug 2025 13:36

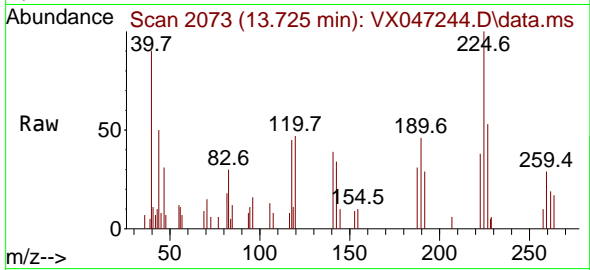
Tgt Ion:117 Resp: 923
 Ion Ratio Lower Upper
 117 100
 201 0.0 34.8 104.5#





#94
 Hexachlorobutadiene
 Concen: 0.756 ug/l
 RT: 13.725 min Scan# 2073
 Delta R.T. 0.000 min
 Lab File: VX047244.D
 Acq: 06 Aug 2025 13:36

Instrument :
 MSVOA_X
 ClientSampleId :
 TP-2



Tgt Ion:225 Resp: 1404

Ion	Ratio	Lower	Upper
225	100		
223	52.4	31.6	95.0
227	53.7	32.9	98.6

