

Data Path : Z:\voasrv\HPCHEM1\MSVOA_X\Data\VX080625\
 Data File : VX047245.D
 Acq On : 06 Aug 2025 13:57
 Operator : JC/MD
 Sample : Q2780-04
 Misc : 5.0mL/MSVOA_X/WATER
 ALS Vial : 9 Sample Multiplier: 1

Instrument :
 MSVOA_X
 ClientSampleId :
 TP-3

Quant Time: Aug 07 01:17:57 2025
 Quant Method : Z:\voasrv\HPCHEM1\MSVOA_X\Method\82X072125W.M
 Quant Title : SW846 8260
 QLast Update : Tue Jul 22 03:59:51 2025
 Response via : Initial Calibration

Compound	R.T.	QIon	Response	Conc	Units	Dev(Min)

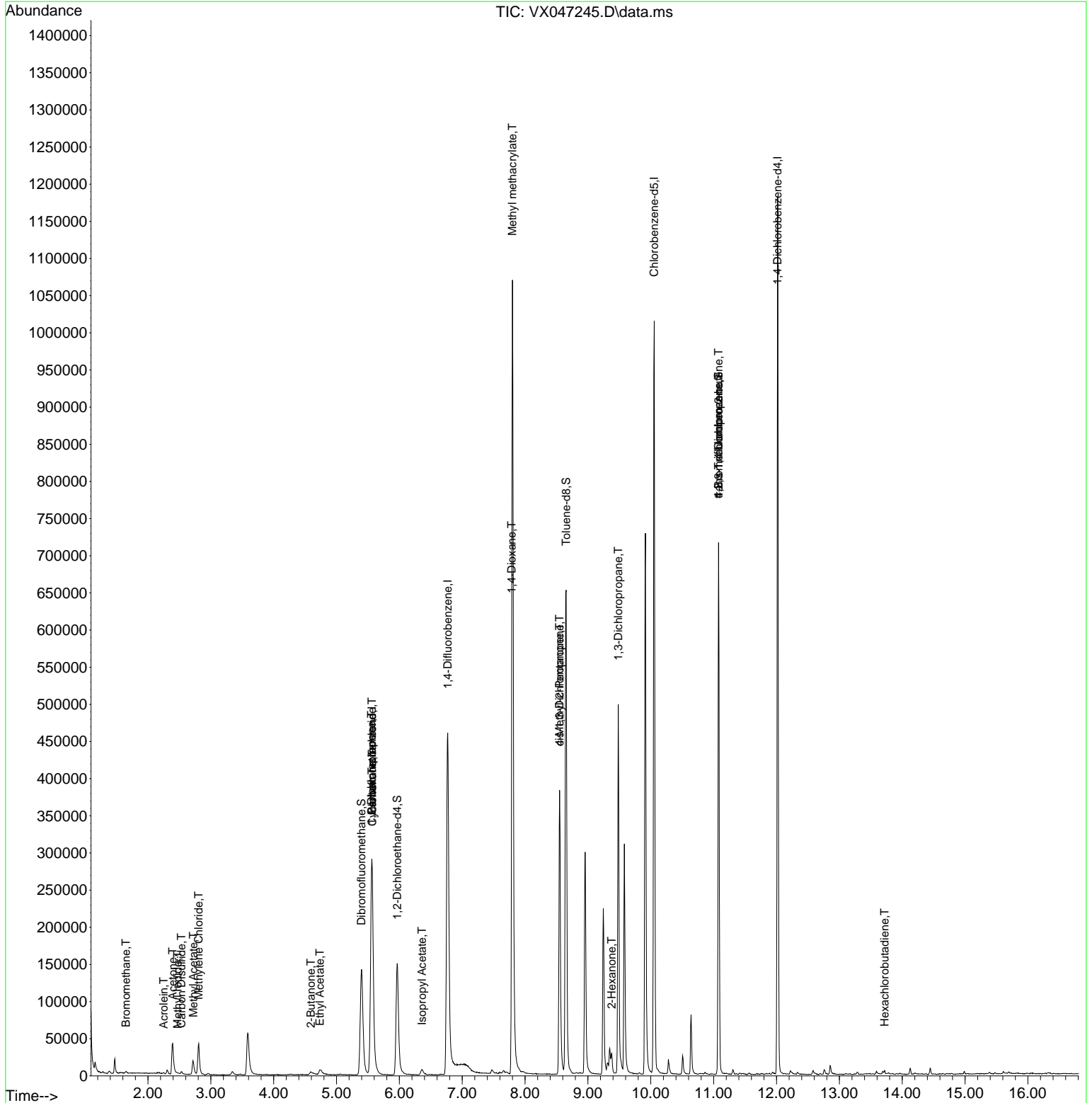
Internal Standards						
1) Pentafluorobenzene	5.562	168	287320	50.000	ug/l	0.00
34) 1,4-Difluorobenzene	6.769	114	500448	50.000	ug/l	0.00
63) Chlorobenzene-d5	10.055	117	442436	50.000	ug/l	0.00
72) 1,4-Dichlorobenzene-d4	12.018	152	229116	50.000	ug/l	0.00
System Monitoring Compounds						
33) 1,2-Dichloroethane-d4	5.964	65	156218	43.647	ug/l	0.00
Spiked Amount	50.000	Range 78 - 117	Recovery =	87.300%		
35) Dibromofluoromethane	5.397	113	134334	43.475	ug/l	0.00
Spiked Amount	50.000	Range 75 - 124	Recovery =	86.940%		
50) Toluene-d8	8.653	98	408035	40.776	ug/l	0.00
Spiked Amount	50.000	Range 92 - 112	Recovery =	81.560%#		
62) 4-Bromofluorobenzene	11.079	95	190789	44.243	ug/l	0.00
Spiked Amount	50.000	Range 83 - 123	Recovery =	88.480%		
Target Compounds						
						Qvalue
5) Bromomethane	1.648	94	649	0.294	ug/l #	69
10) Methyl Iodide	2.471	142	2499	0.673	ug/l	96
11) Tert butyl alcohol	2.953	59	467	Below Cal		97
13) Acrolein	2.251	56	550	0.714	ug/l #	60
16) Acetone	2.392	43	60560	42.238	ug/l	93
17) Carbon Disulfide	2.532	76	3930	0.376	ug/l #	76
18) Methyl Acetate	2.721	43	28040	7.359	ug/l	94
20) Methylene Chloride	2.806	84	20071	5.088	ug/l	95
25) 2-Butanone	4.593	43	11269	5.398	ug/l #	88
31) Cyclohexane	5.568	56	5938	0.887	ug/l #	42
36) 1,1-Dichloropropene	5.556	75	24088	4.573	ug/l #	51
37) Ethyl Acetate	4.733	43	17889	3.686	ug/l #	82
38) Carbon Tetrachloride	5.562	117	31622	5.625	ug/l #	15
43) Isopropyl Acetate	6.361	43	12050	1.593	ug/l #	93
48) Methyl methacrylate	7.799	41	100736	24.440	ug/l #	46
49) 1,4-Dioxane	7.787	88	43	0.917	ug/l #	1
51) 4-Methyl-2-Pentanone	8.549	43	143643	31.940	ug/l #	50
54) cis-1,3-Dichloropropene	8.549	75	65863	11.183	ug/l #	58
57) 1,3-Dichloropropane	9.482	76	4495	0.736	ug/l #	43
59) 2-Hexanone	9.378	43	18688	6.290	ug/l #	25
76) 1,2,3-Trichloropropane	11.079	75	99850	23.545	ug/l #	35
81) trans-1,4-Dichloro-2-b...	11.079	75	99850	60.661	ug/l #	8
94) Hexachlorobutadiene	13.719	225	657	0.371	ug/l	91

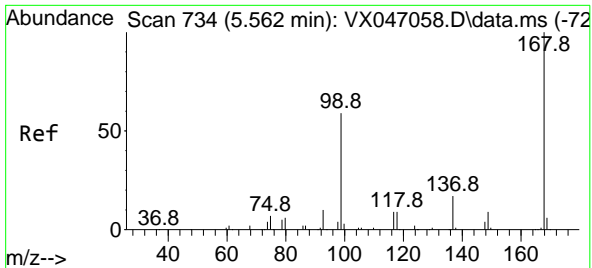
(#) = qualifier out of range (m) = manual integration (+) = signals summed

Data Path : Z:\voasrv\HPCHEM1\MSVOA_X\Data\VX080625\
 Data File : VX047245.D
 Acq On : 06 Aug 2025 13:57
 Operator : JC/MD
 Sample : Q2780-04
 Misc : 5.0mL/MSVOA_X/WATER
 ALS Vial : 9 Sample Multiplier: 1

Instrument :
 MSVOA_X
 ClientSampleId :
 TP-3

Quant Time: Aug 07 01:17:57 2025
 Quant Method : Z:\voasrv\HPCHEM1\MSVOA_X\Method\82X072125W.M
 Quant Title : SW846 8260
 QLast Update : Tue Jul 22 03:59:51 2025
 Response via : Initial Calibration

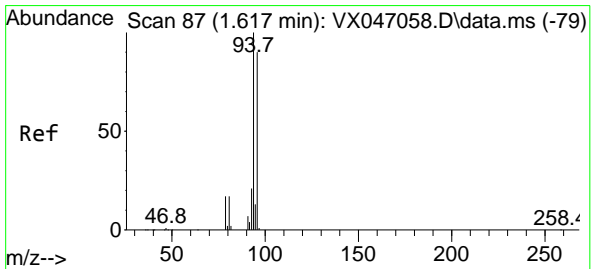
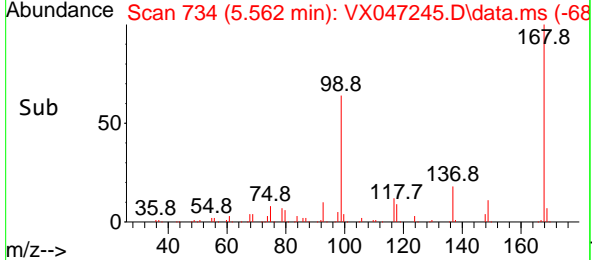
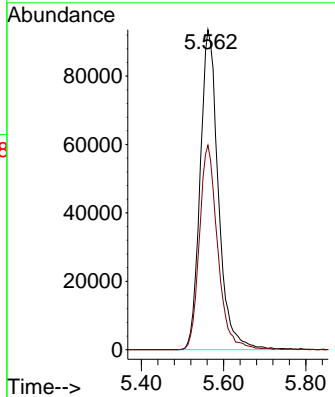
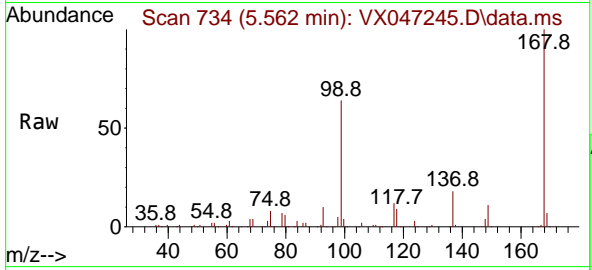




#1
 Pentafluorobenzene
 Concen: 50.000 ug/l
 RT: 5.562 min Scan# 71
 Delta R.T. -0.000 min
 Lab File: VX047245.D
 Acq: 06 Aug 2025 13:57

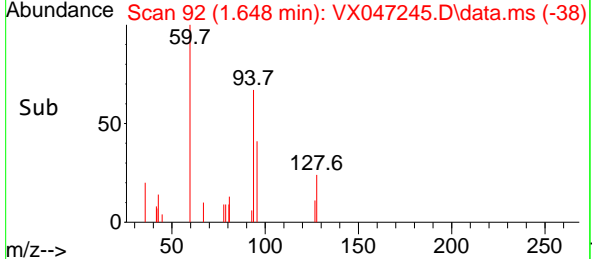
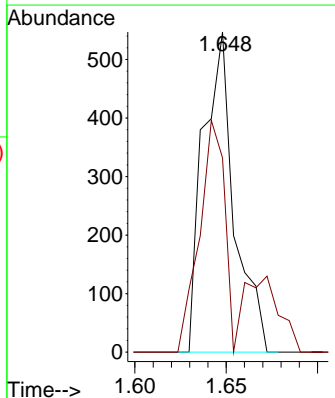
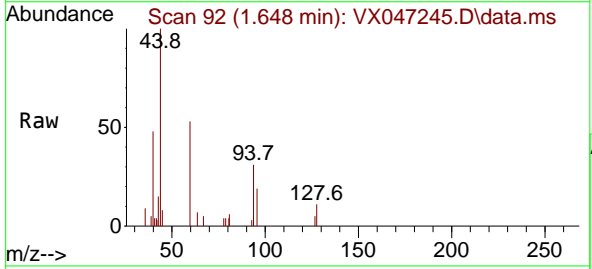
Instrument : MSVOA_X
 ClientSampleId : TP-3

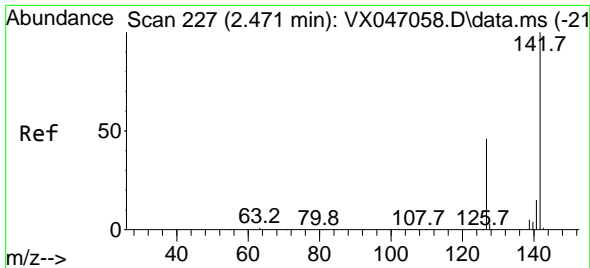
Tgt Ion:168 Resp: 287320
 Ion Ratio Lower Upper
 168 100
 99 63.9 48.0 72.0



#5
 Bromomethane
 Concen: 0.294 ug/l
 RT: 1.648 min Scan# 92
 Delta R.T. 0.031 min
 Lab File: VX047245.D
 Acq: 06 Aug 2025 13:57

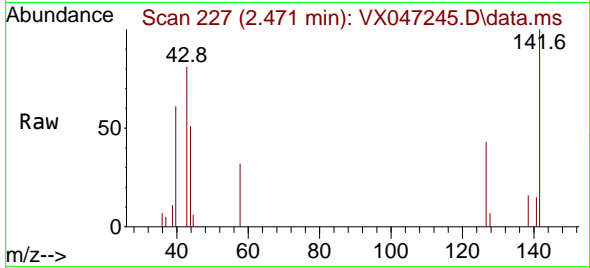
Tgt Ion: 94 Resp: 649
 Ion Ratio Lower Upper
 94 100
 96 60.7 72.3 108.5#





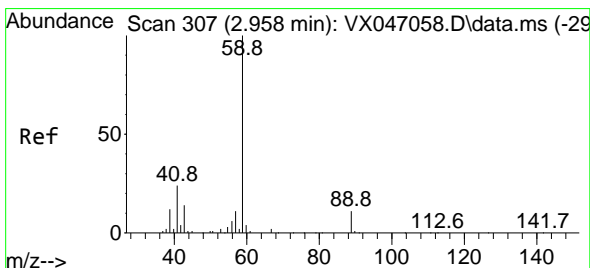
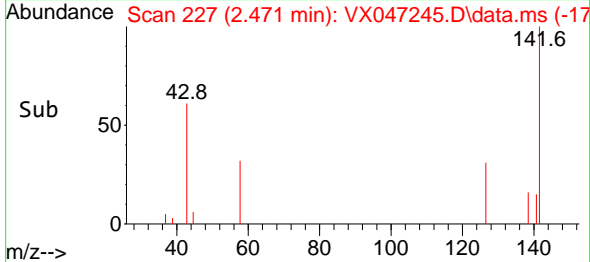
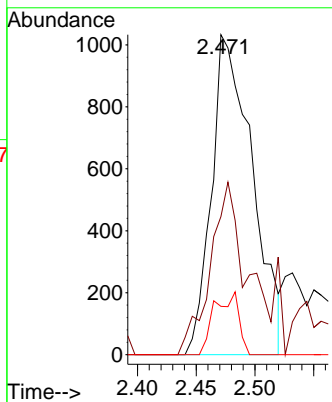
#10
 Methyl Iodide
 Concen: 0.673 ug/l
 RT: 2.471 min Scan# 21
 Delta R.T. 0.000 min
 Lab File: VX047245.D
 Acq: 06 Aug 2025 13:57

Instrument : MSVOA_X
 ClientSampleId : TP-3



Tgt Ion:142 Resp: 2499

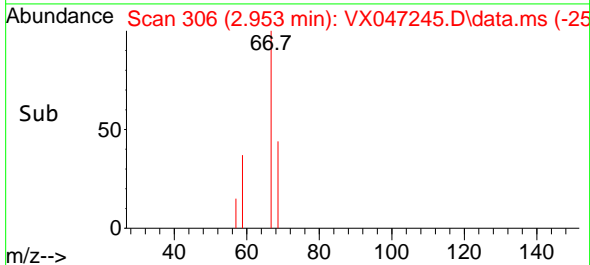
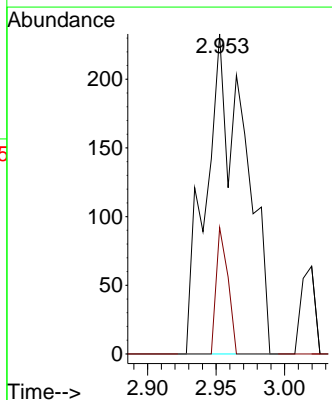
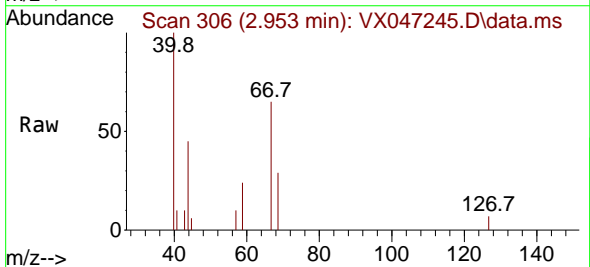
Ion	Ratio	Lower	Upper
142	100		
127	48.5	36.6	54.8
141	11.6	10.9	16.3

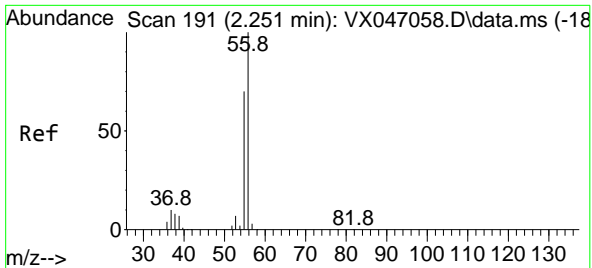


#11
 Tert butyl alcohol
 Concen: Below Cal
 RT: 2.953 min Scan# 306
 Delta R.T. -0.005 min
 Lab File: VX047245.D
 Acq: 06 Aug 2025 13:57

Tgt Ion: 59 Resp: 467

Ion	Ratio	Lower	Upper
59	100		
57	11.6	8.5	12.7

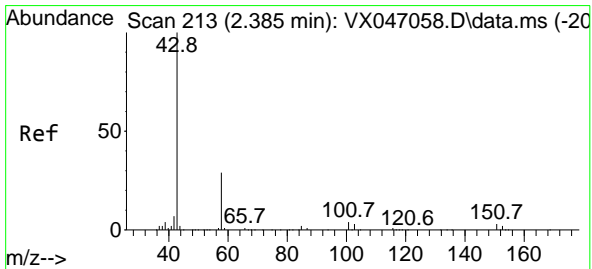
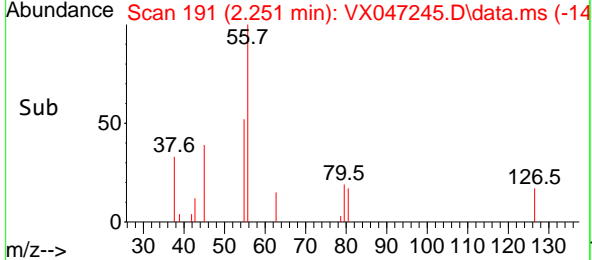
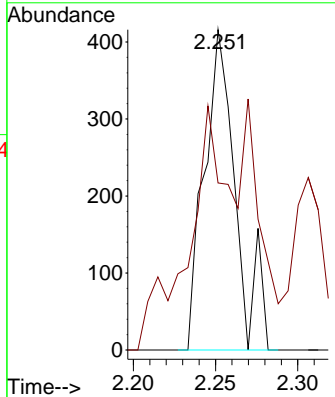
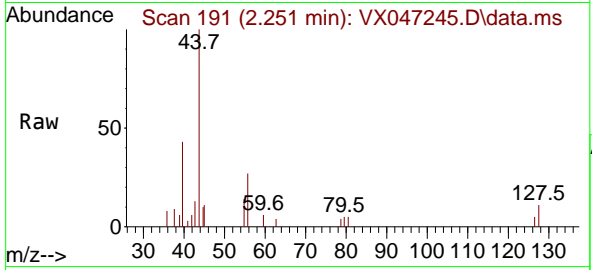




#13
 Acrolein
 Concen: 0.714 ug/l
 RT: 2.251 min Scan# 191
 Delta R.T. 0.000 min
 Lab File: VX047245.D
 Acq: 06 Aug 2025 13:57

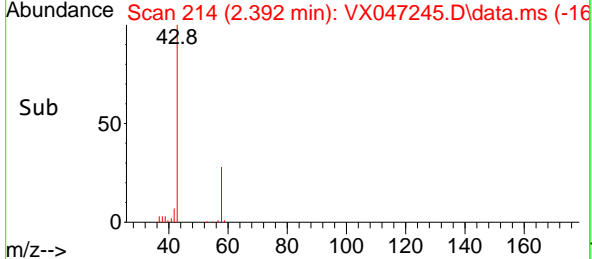
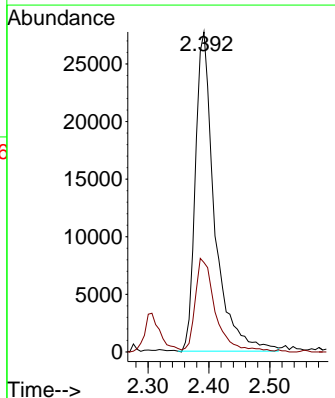
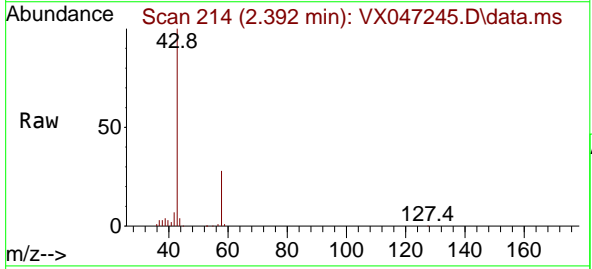
Instrument : MSVOA_X
 ClientSampleId : TP-3

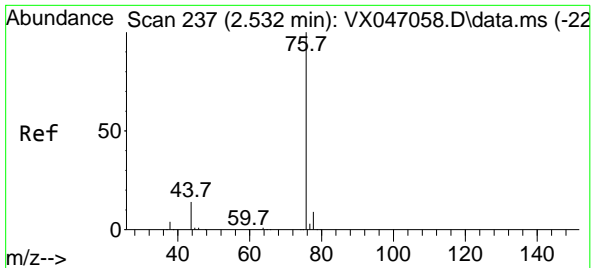
Tgt Ion: 56 Resp: 550
 Ion Ratio Lower Upper
 56 100
 55 102.5 55.7 83.5#



#16
 Acetone
 Concen: 42.238 ug/l
 RT: 2.392 min Scan# 214
 Delta R.T. 0.006 min
 Lab File: VX047245.D
 Acq: 06 Aug 2025 13:57

Tgt Ion: 43 Resp: 60560
 Ion Ratio Lower Upper
 43 100
 58 26.4 24.0 36.0

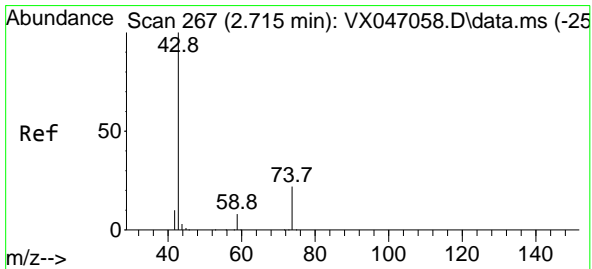
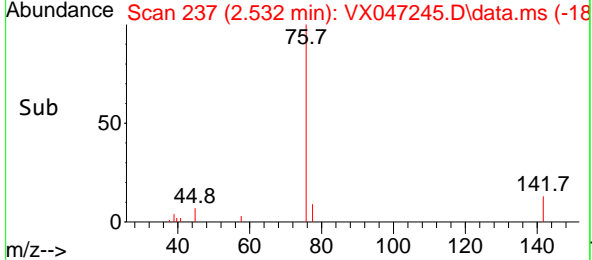
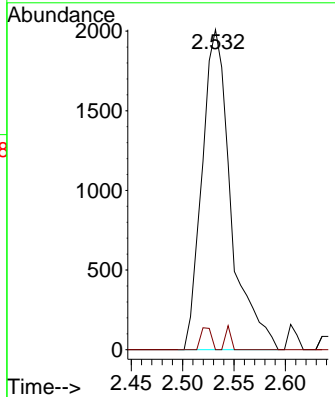
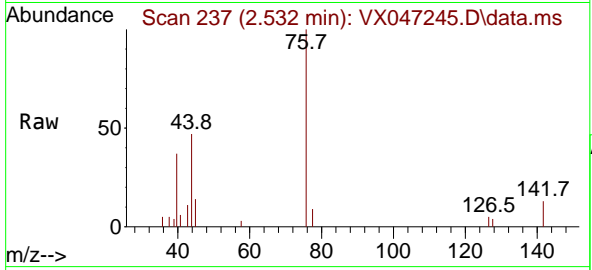




#17
 Carbon Disulfide
 Concen: 0.376 ug/l
 RT: 2.532 min Scan# 21
 Delta R.T. 0.000 min
 Lab File: VX047245.D
 Acq: 06 Aug 2025 13:57

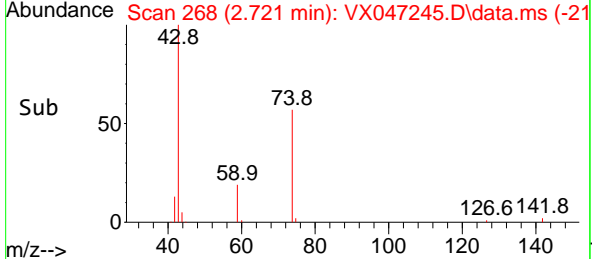
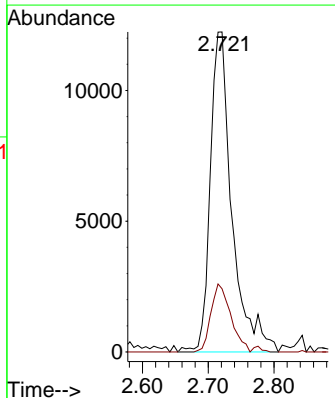
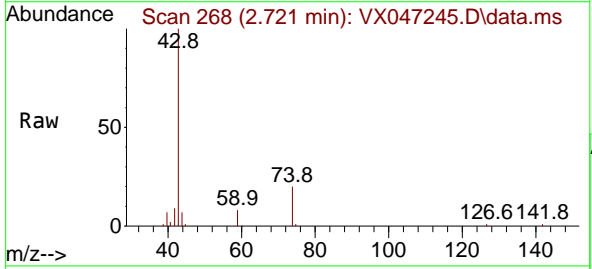
Instrument : MSVOA_X
 ClientSampleId : TP-3

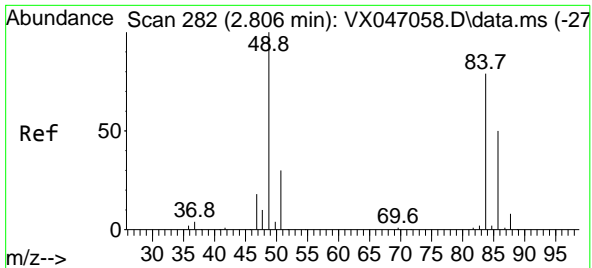
Tgt Ion: 76 Resp: 3930
 Ion Ratio Lower Upper
 76 100
 78 0.0 7.0 10.4#



#18
 Methyl Acetate
 Concen: 7.359 ug/l
 RT: 2.721 min Scan# 268
 Delta R.T. 0.006 min
 Lab File: VX047245.D
 Acq: 06 Aug 2025 13:57

Tgt Ion: 43 Resp: 28040
 Ion Ratio Lower Upper
 43 100
 74 19.4 17.7 26.5

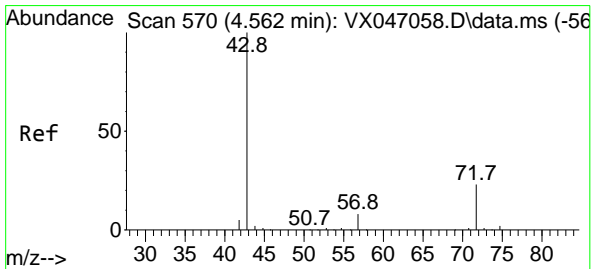
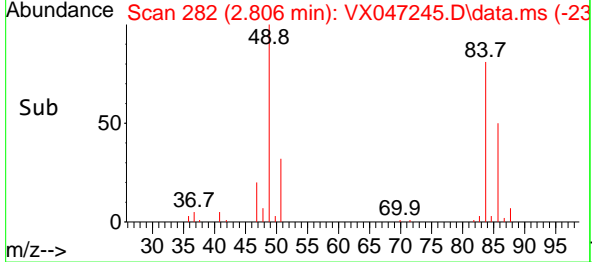
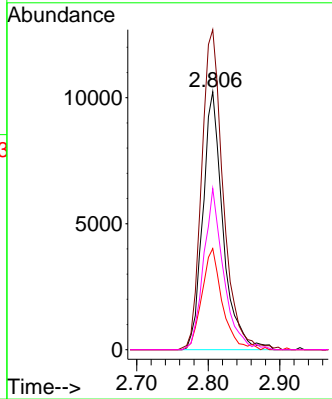
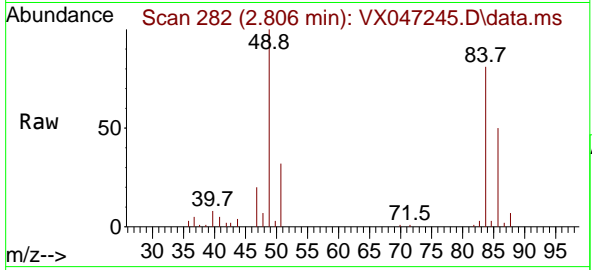




#20
 Methylene Chloride
 Concen: 5.088 ug/l
 RT: 2.806 min Scan# 21
 Delta R.T. 0.000 min
 Lab File: VX047245.D
 Acq: 06 Aug 2025 13:57

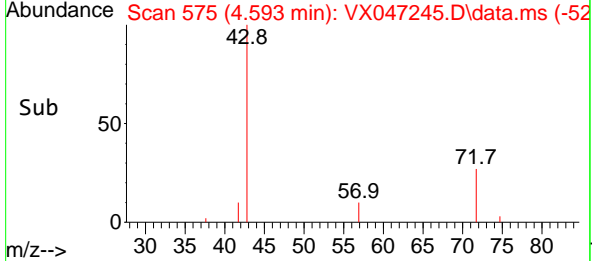
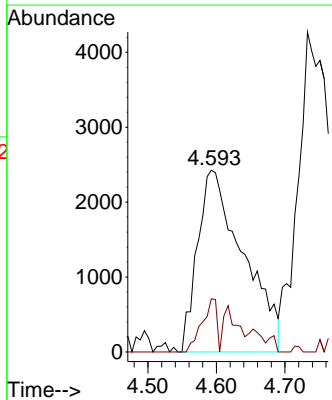
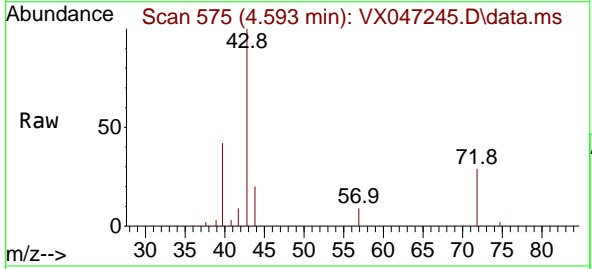
Instrument : MSVOA_X
 ClientSampleId : TP-3

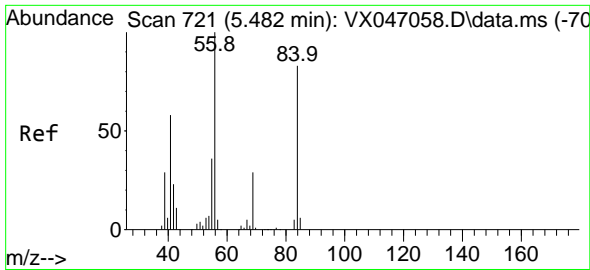
Tgt Ion	Resp	Lower	Upper
84	20071		
84	100		
49	119.7	101.6	152.4
51	37.8	30.3	45.5
86	60.3	50.6	75.8



#25
 2-Butanone
 Concen: 5.398 ug/l
 RT: 4.593 min Scan# 575
 Delta R.T. 0.031 min
 Lab File: VX047245.D
 Acq: 06 Aug 2025 13:57

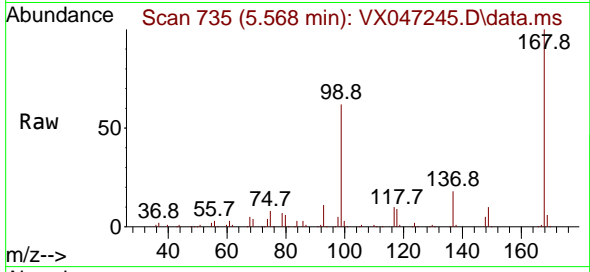
Tgt Ion	Resp	Lower	Upper
43	11269		
43	100		
72	29.3	18.8	28.2



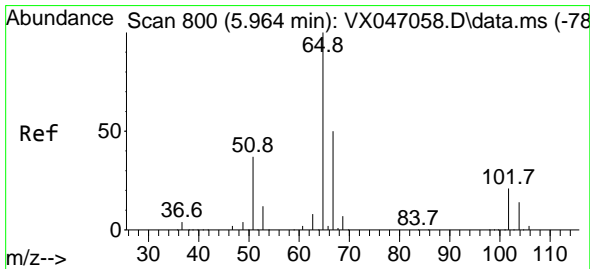
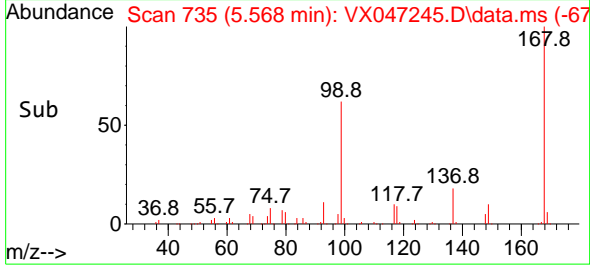
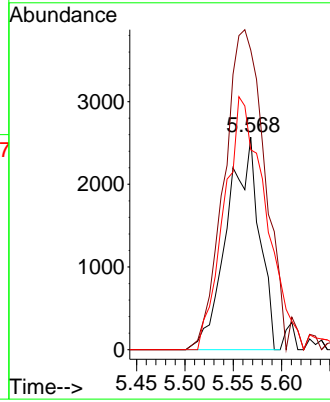


#31
 Cyclohexane
 Concen: 0.887 ug/l
 RT: 5.568 min Scan# 717
 Delta R.T. 0.086 min
 Lab File: VX047245.D
 Acq: 06 Aug 2025 13:57

Instrument :
 MSVOA_X
 ClientSampleId :
 TP-3

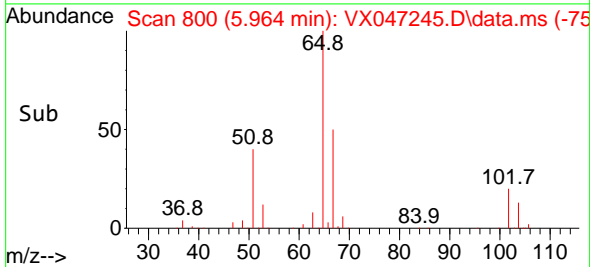
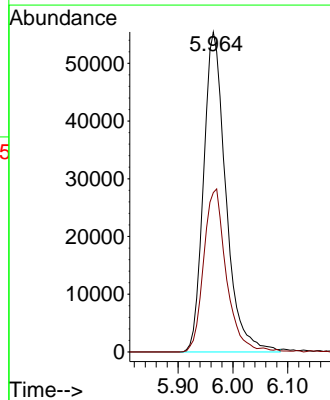
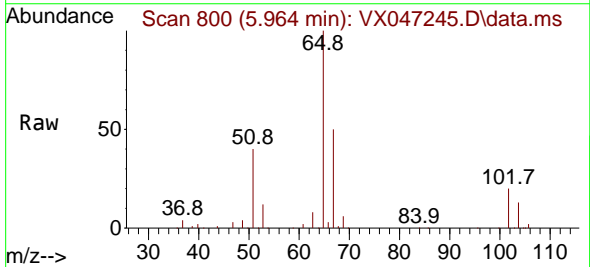


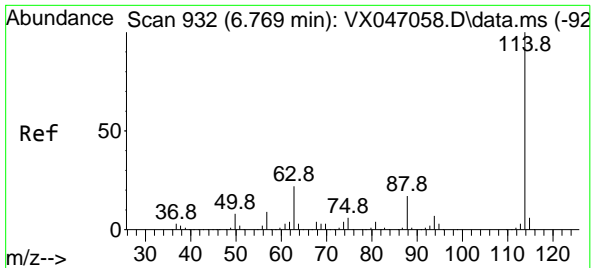
Tgt Ion: 56 Resp: 5938
 Ion Ratio Lower Upper
 56 100
 69 135.8 23.3 34.9#
 84 90.6 66.5 99.7



#33
 1,2-Dichloroethane-d4
 Concen: 43.647 ug/l
 RT: 5.964 min Scan# 800
 Delta R.T. 0.000 min
 Lab File: VX047245.D
 Acq: 06 Aug 2025 13:57

Tgt Ion: 65 Resp: 156218
 Ion Ratio Lower Upper
 65 100
 67 52.1 0.0 104.8



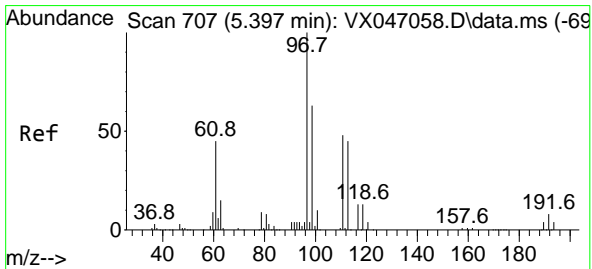
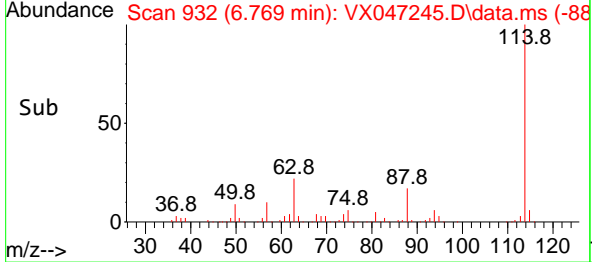
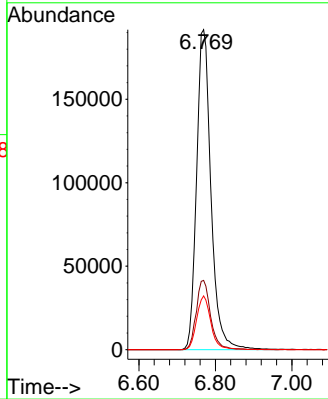
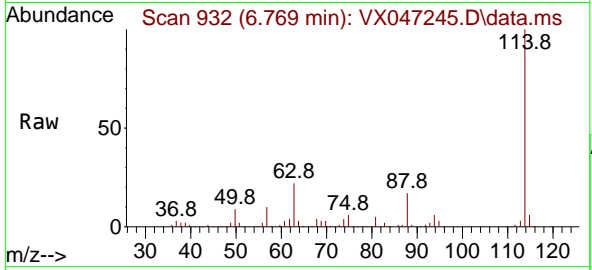


#34
 1,4-Difluorobenzene
 Concen: 50.000 ug/l
 RT: 6.769 min Scan# 911
 Delta R.T. 0.000 min
 Lab File: VX047245.D
 Acq: 06 Aug 2025 13:57

Instrument :
 MSVOA_X
 ClientSampleId :
 TP-3

Tgt Ion:114 Resp: 500448

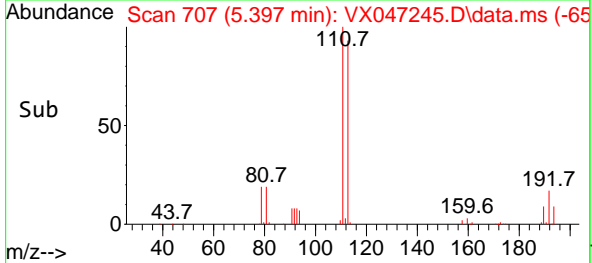
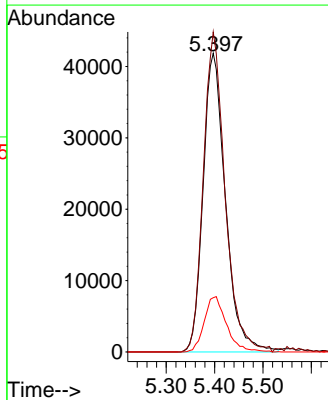
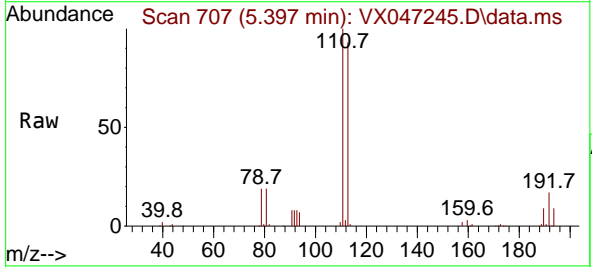
Ion	Ratio	Lower	Upper
114	100		
63	21.7	0.0	43.2
88	16.8	0.0	33.8

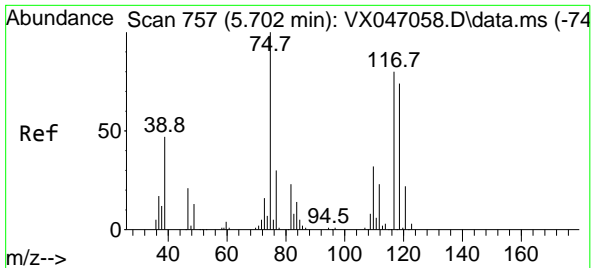


#35
 Dibromofluoromethane
 Concen: 43.475 ug/l
 RT: 5.397 min Scan# 707
 Delta R.T. 0.000 min
 Lab File: VX047245.D
 Acq: 06 Aug 2025 13:57

Tgt Ion:113 Resp: 134334

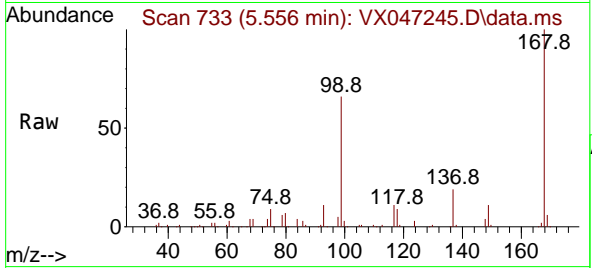
Ion	Ratio	Lower	Upper
113	100		
111	104.1	82.6	124.0
192	18.5	14.9	22.3



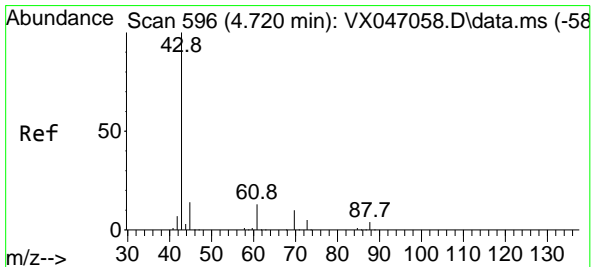
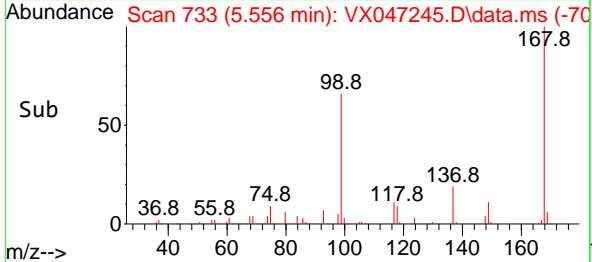
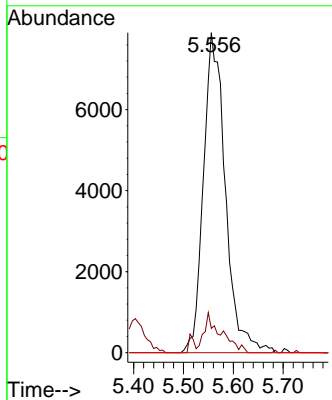


#36
 1,1-Dichloropropene
 Concen: 4.573 ug/l
 RT: 5.556 min Scan# 711
 Delta R.T. -0.146 min
 Lab File: VX047245.D
 Acq: 06 Aug 2025 13:57

Instrument : MSVOA_X
 ClientSampleId : TP-3

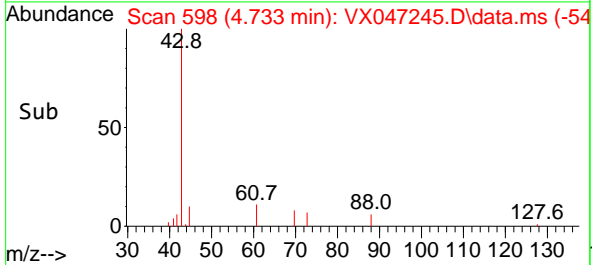
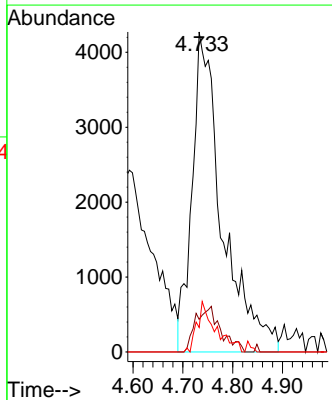
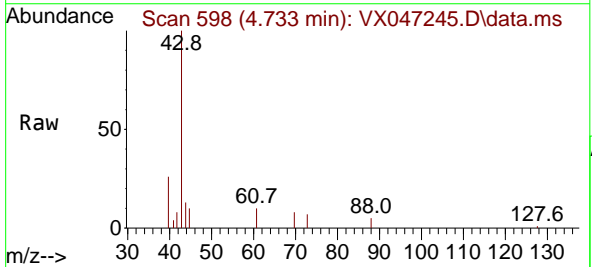


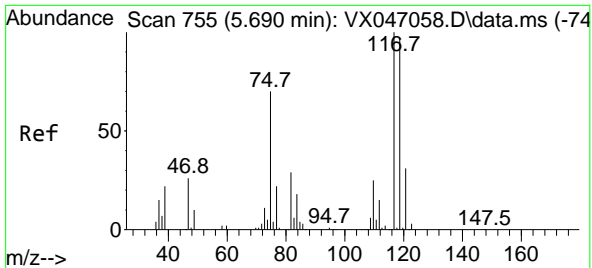
Tgt Ion: 75 Resp: 24088
 Ion Ratio Lower Upper
 75 100
 110 9.7 17.2 51.5#
 77 0.0 25.1 37.7#



#37
 Ethyl Acetate
 Concen: 3.686 ug/l
 RT: 4.733 min Scan# 598
 Delta R.T. 0.012 min
 Lab File: VX047245.D
 Acq: 06 Aug 2025 13:57

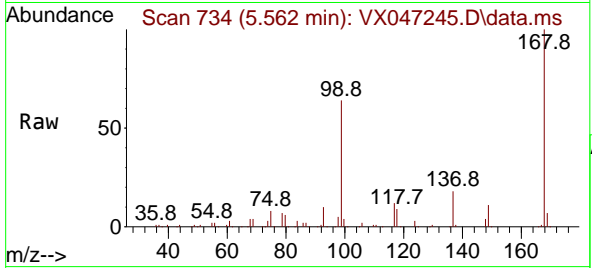
Tgt Ion: 43 Resp: 17889
 Ion Ratio Lower Upper
 43 100
 61 0.0 10.2 15.2#
 70 9.7 8.1 12.1



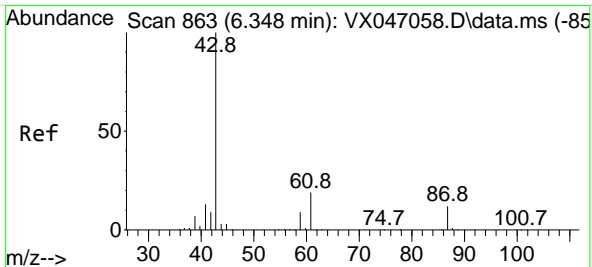
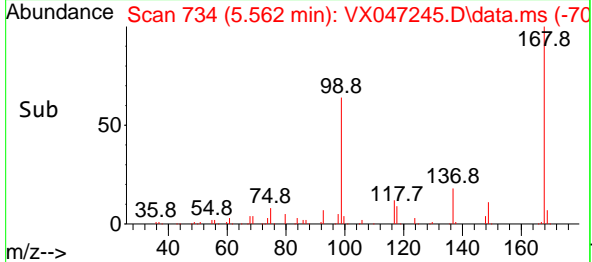
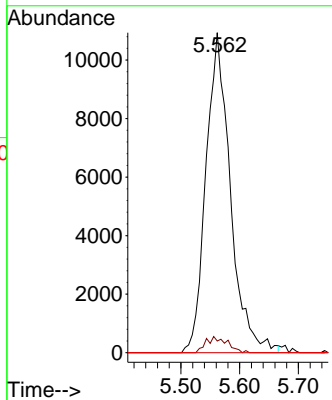


#38
 Carbon Tetrachloride
 Concen: 5.625 ug/l
 RT: 5.562 min Scan# 711
 Delta R.T. -0.128 min
 Lab File: VX047245.D
 Acq: 06 Aug 2025 13:57

Instrument : MSVOA_X
 ClientSampleId : TP-3

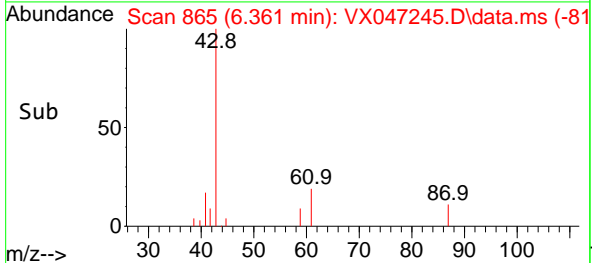
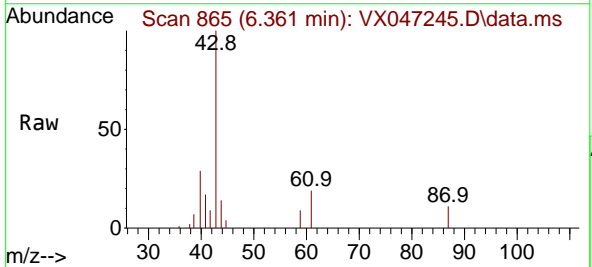
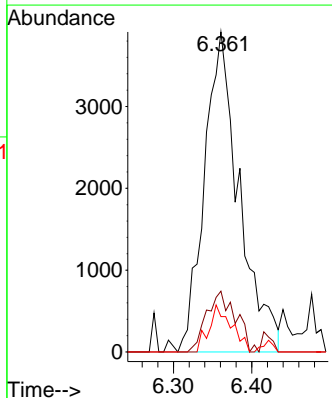


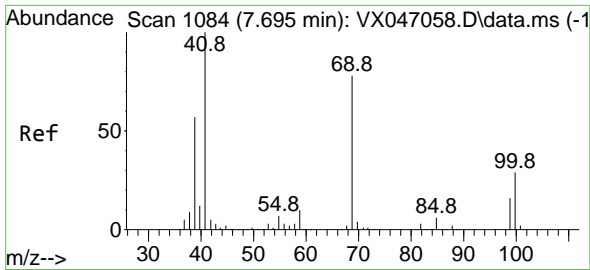
Tgt Ion: 117 Resp: 31622
 Ion Ratio Lower Upper
 117 100
 119 3.6 76.6 115.0#
 121 0.0 24.4 36.6#



#43
 Isopropyl Acetate
 Concen: 1.593 ug/l
 RT: 6.361 min Scan# 865
 Delta R.T. 0.012 min
 Lab File: VX047245.D
 Acq: 06 Aug 2025 13:57

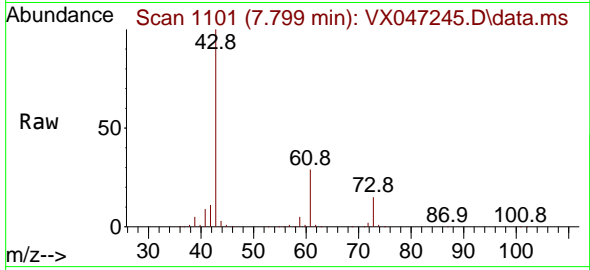
Tgt Ion: 43 Resp: 12050
 Ion Ratio Lower Upper
 43 100
 61 16.0 15.1 22.7
 87 9.5 9.7 14.5#



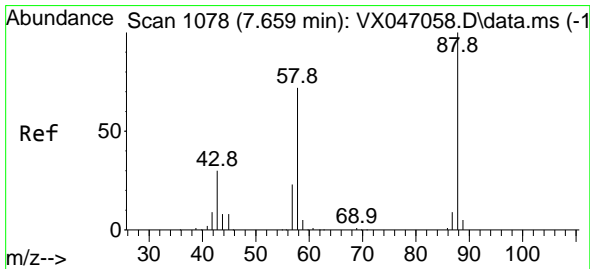
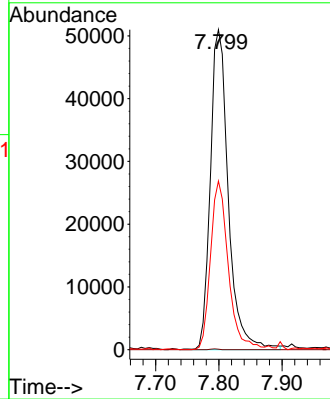
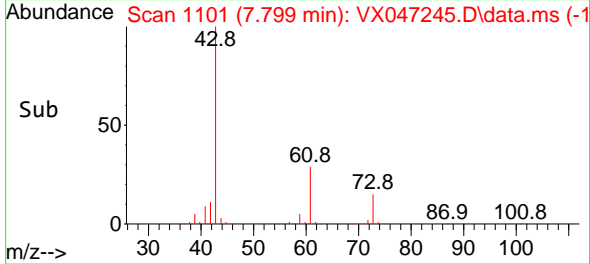


#48
 Methyl methacrylate
 Concen: 24.440 ug/l
 RT: 7.799 min Scan# 1101
 Delta R.T. 0.104 min
 Lab File: VX047245.D
 Acq: 06 Aug 2025 13:57

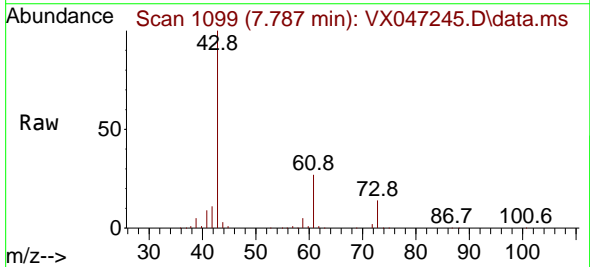
Instrument : MSVOA_X
 ClientSampleId : TP-3



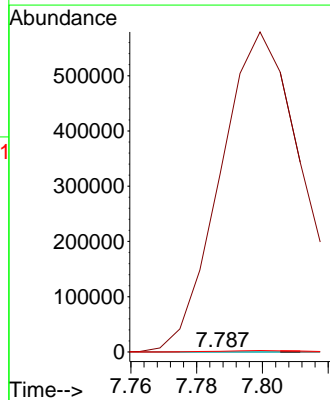
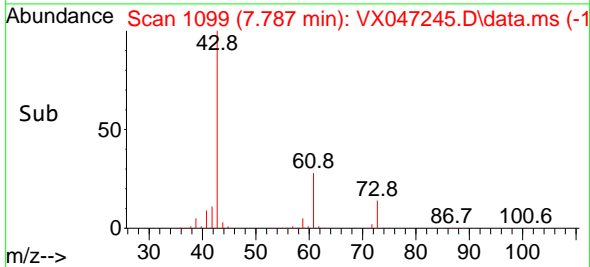
Tgt Ion: 41 Resp: 100736
 Ion Ratio Lower Upper
 41 100
 69 0.1 62.3 93.5#
 39 52.1 44.8 67.2

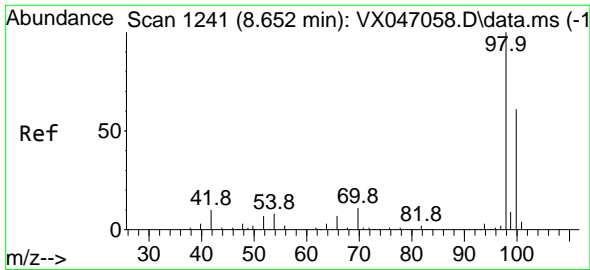


#49
 1,4-Dioxane
 Concen: 0.917 ug/l
 RT: 7.787 min Scan# 1099
 Delta R.T. 0.128 min
 Lab File: VX047245.D
 Acq: 06 Aug 2025 13:57



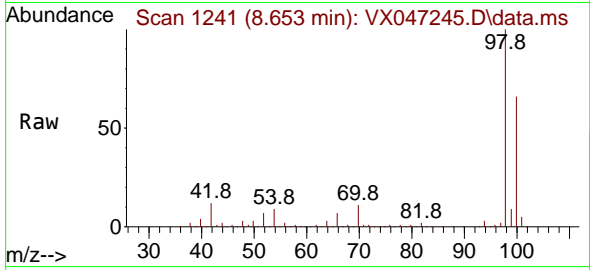
Tgt Ion: 88 Resp: 43
 Ion Ratio Lower Upper
 88 100
 43 2518060.5 33.6 50.4#
 58 11211.6 58.8 88.2#



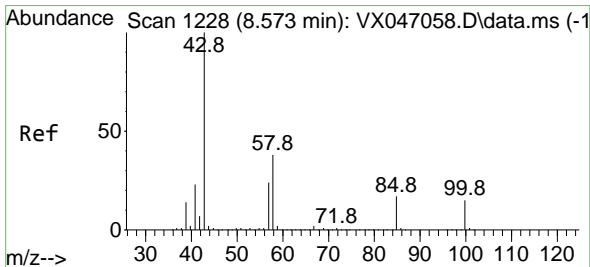
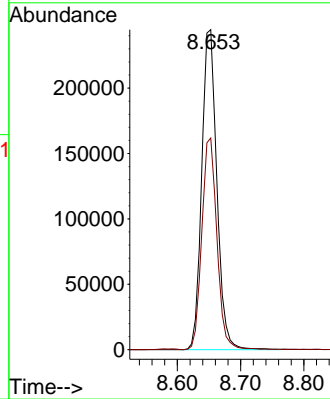
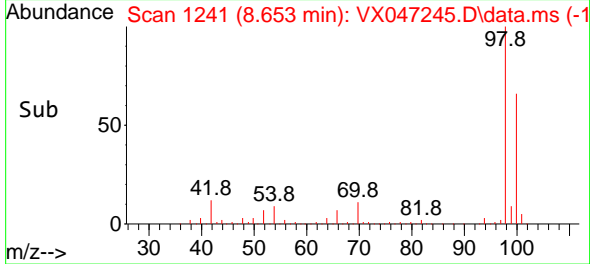


#50
 Toluene-d8
 Concen: 40.776 ug/l
 RT: 8.653 min Scan# 11
 Delta R.T. 0.000 min
 Lab File: VX047245.D
 Acq: 06 Aug 2025 13:57

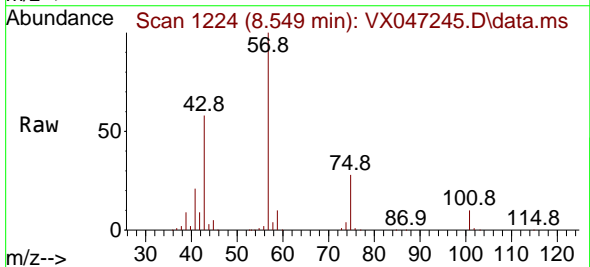
Instrument :
 MSVOA_X
 ClientSampleId :
 TP-3



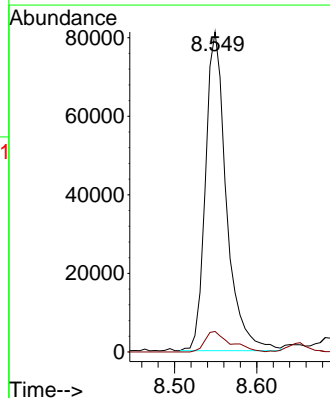
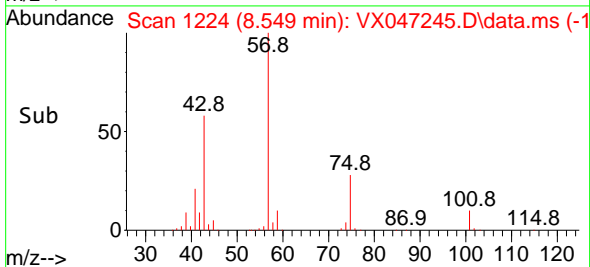
Tgt Ion: 98 Resp: 408035
 Ion Ratio Lower Upper
 98 100
 100 66.1 53.3 79.9

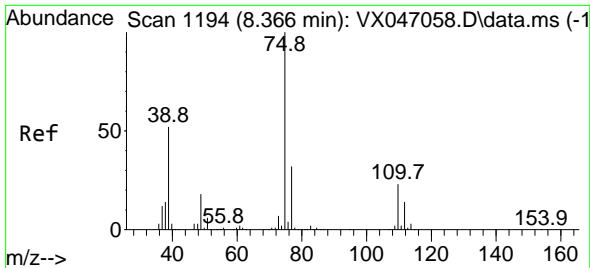


#51
 4-Methyl-2-Pentanone
 Concen: 31.940 ug/l
 RT: 8.549 min Scan# 1224
 Delta R.T. -0.024 min
 Lab File: VX047245.D
 Acq: 06 Aug 2025 13:57



Tgt Ion: 43 Resp: 143643
 Ion Ratio Lower Upper
 43 100
 58 7.8 30.6 45.8#

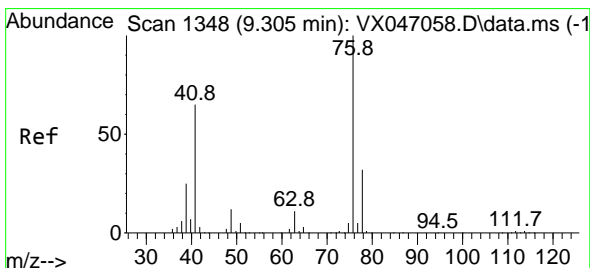
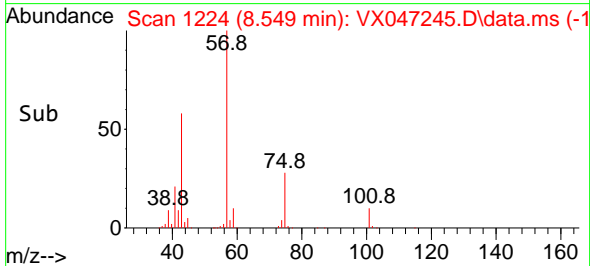
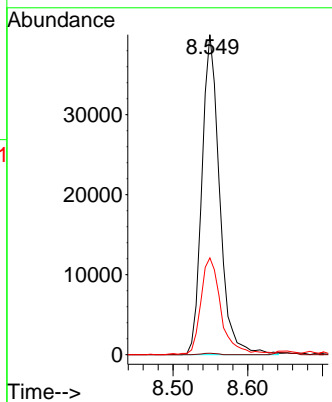
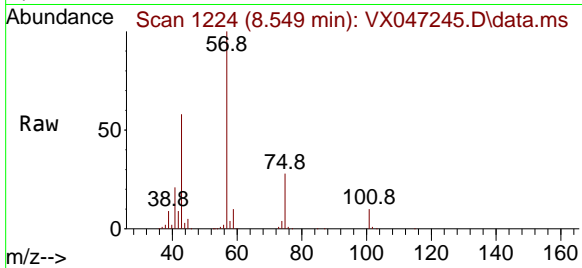




#54
 cis-1,3-Dichloropropene
 Concen: 11.183 ug/l
 RT: 8.549 min Scan# 1194
 Delta R.T. 0.183 min
 Lab File: VX047245.D
 Acq: 06 Aug 2025 13:57

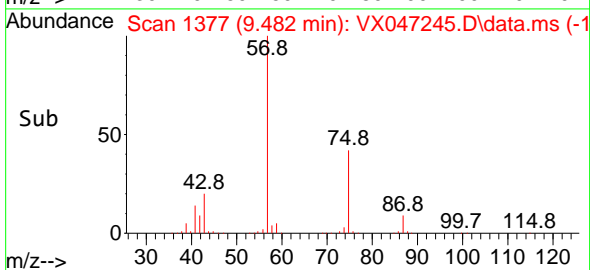
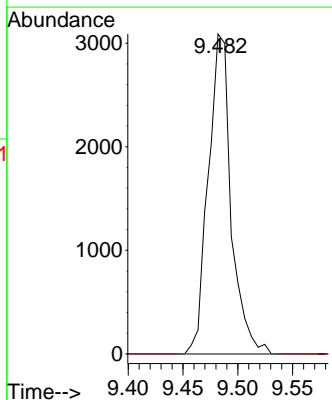
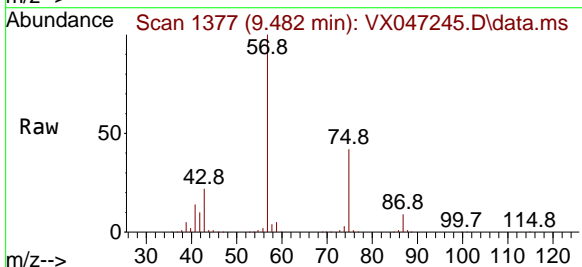
Instrument : MSVOA_X
 ClientSampleId : TP-3

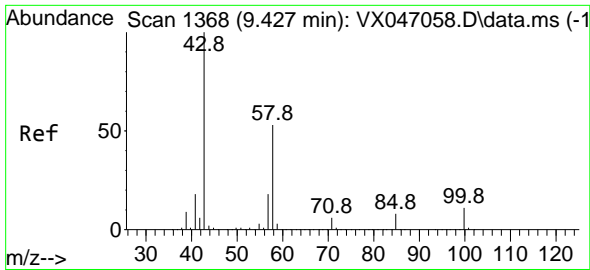
Tgt Ion	Resp	Lower	Upper
75	65863		
75	100		
77	0.5	25.4	38.0#
39	29.1	41.8	62.6#



#57
 1,3-Dichloropropane
 Concen: 0.736 ug/l
 RT: 9.482 min Scan# 1377
 Delta R.T. 0.177 min
 Lab File: VX047245.D
 Acq: 06 Aug 2025 13:57

Tgt Ion	Resp	Lower	Upper
76	4495		
76	100		
78	0.0	25.5	38.3#

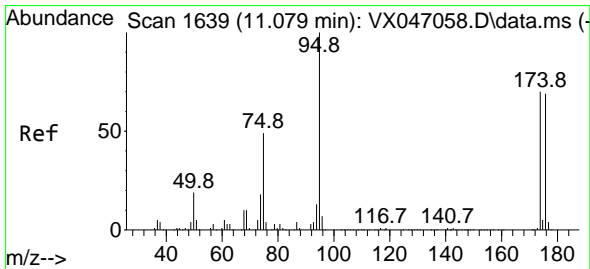
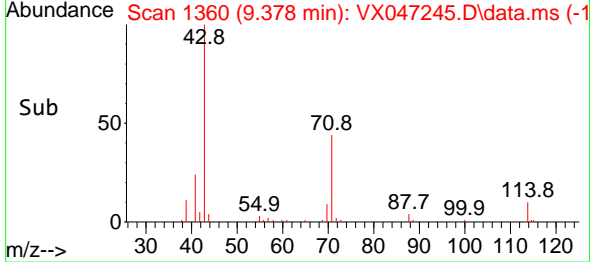
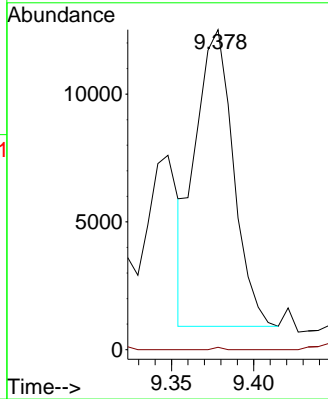
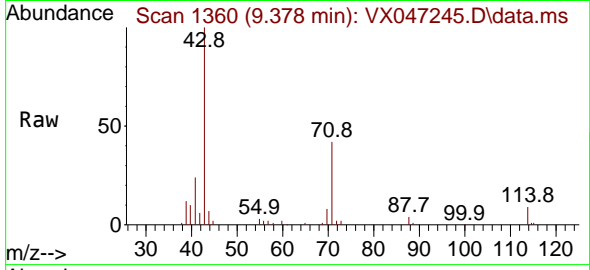




#59
 2-Hexanone
 Concen: 6.290 ug/l
 RT: 9.378 min Scan# 11
 Delta R.T. -0.049 min
 Lab File: VX047245.D
 Acq: 06 Aug 2025 13:57

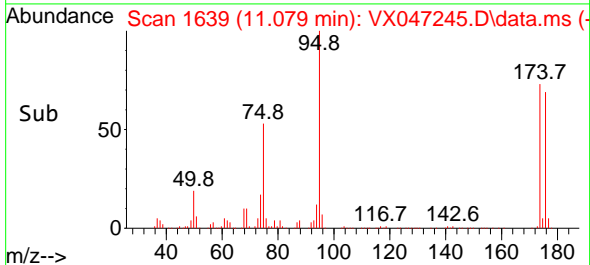
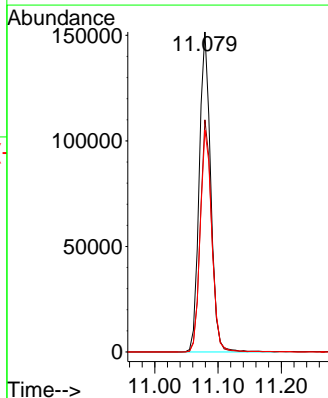
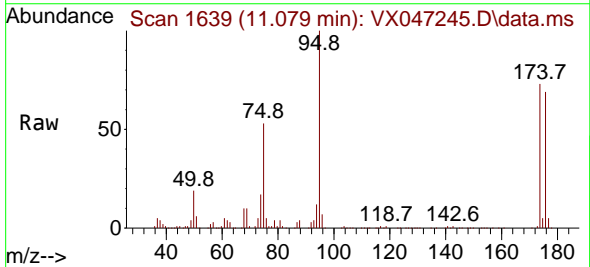
Instrument : MSVOA_X
 ClientSampleId : TP-3

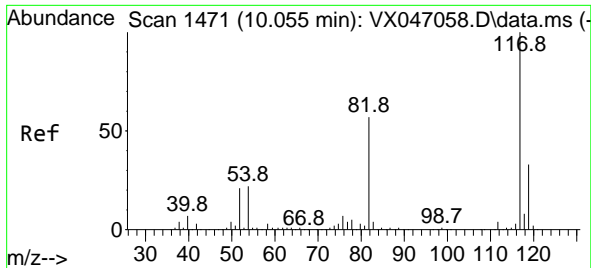
Tgt Ion: 43 Resp: 18688
 Ion Ratio Lower Upper
 43 100
 58 0.0 26.5 79.5#



#62
 4-Bromofluorobenzene
 Concen: 44.243 ug/l
 RT: 11.079 min Scan# 1639
 Delta R.T. 0.000 min
 Lab File: VX047245.D
 Acq: 06 Aug 2025 13:57

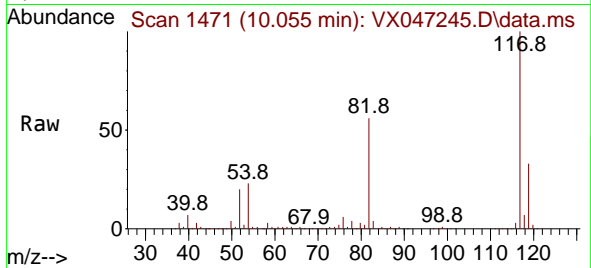
Tgt Ion: 95 Resp: 190789
 Ion Ratio Lower Upper
 95 100
 174 72.0 0.0 144.6
 176 70.7 0.0 139.6



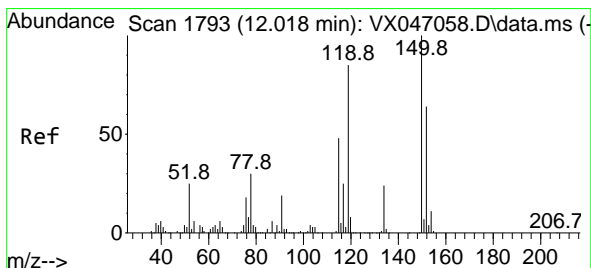
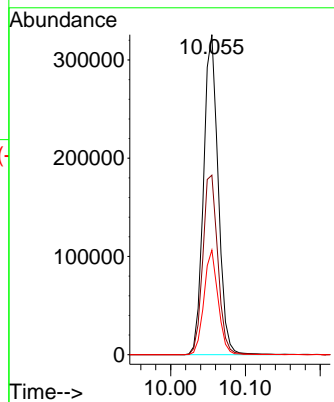
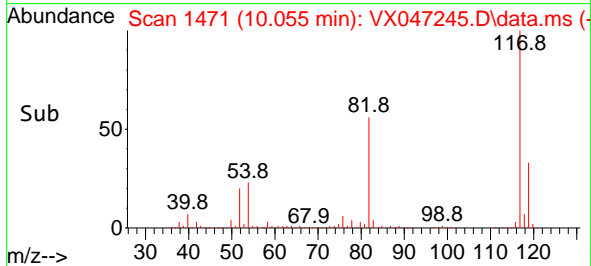


#63
 Chlorobenzene-d5
 Concen: 50.000 ug/l
 RT: 10.055 min Scan# 1471
 Delta R.T. 0.000 min
 Lab File: VX047245.D
 Acq: 06 Aug 2025 13:57

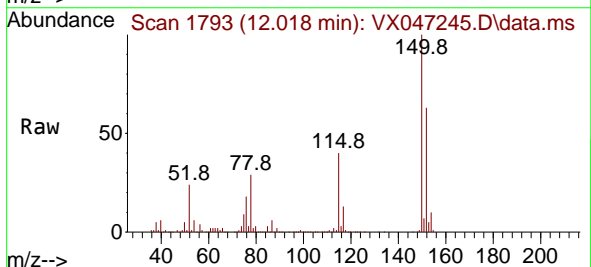
Instrument :
 MSVOA_X
 ClientSampleId :
 TP-3



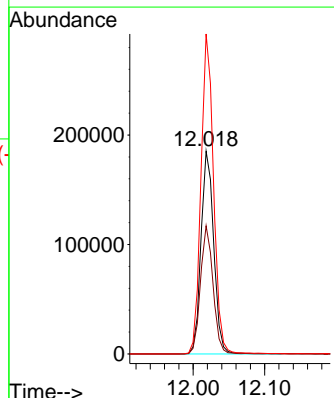
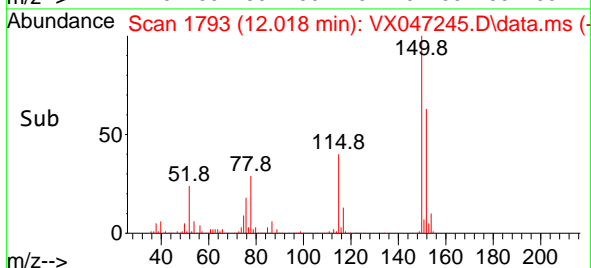
Tgt Ion:117 Resp: 442436
 Ion Ratio Lower Upper
 117 100
 82 56.1 45.4 68.2
 119 32.7 26.1 39.1

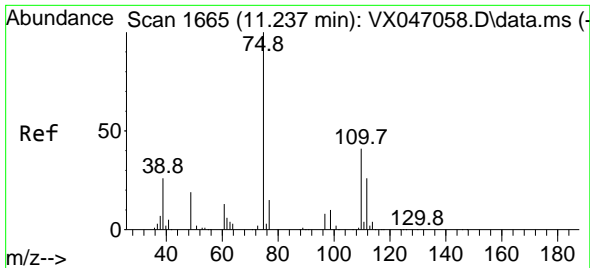


#72
 1,4-Dichlorobenzene-d4
 Concen: 50.000 ug/l
 RT: 12.018 min Scan# 1793
 Delta R.T. 0.000 min
 Lab File: VX047245.D
 Acq: 06 Aug 2025 13:57



Tgt Ion:152 Resp: 229116
 Ion Ratio Lower Upper
 152 100
 115 62.4 45.6 136.7
 150 156.2 0.0 354.6

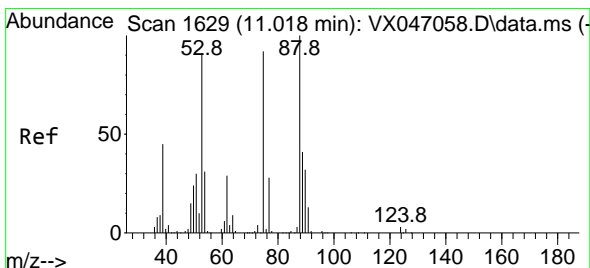
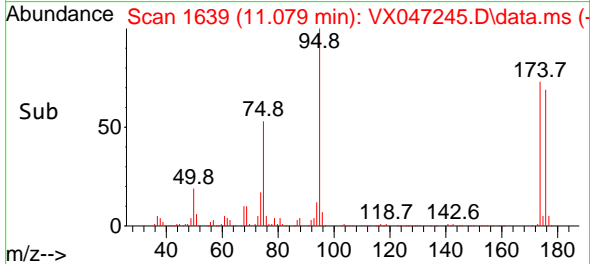
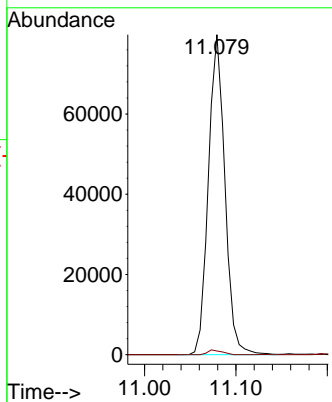
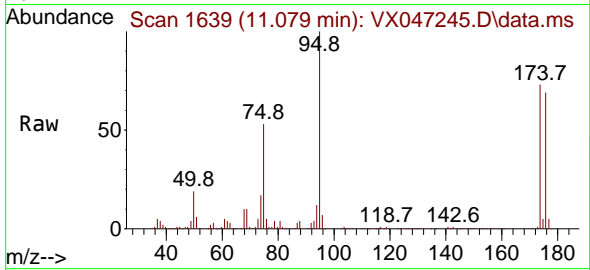




#76
 1,2,3-Trichloropropane
 Concen: 23.545 ug/l
 RT: 11.079 min Scan# 1639
 Delta R.T. -0.158 min
 Lab File: VX047245.D
 Acq: 06 Aug 2025 13:57

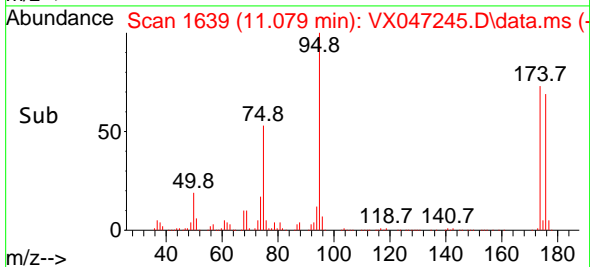
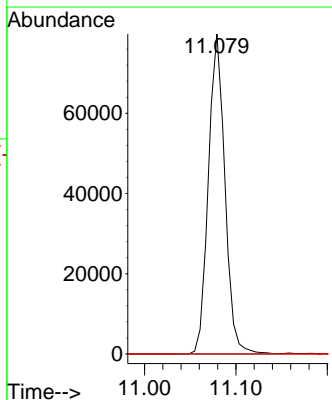
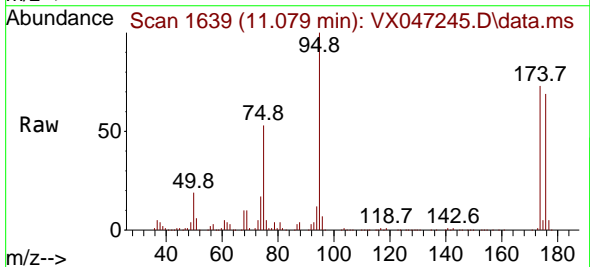
Instrument : MSVOA_X
 ClientSampleId : TP-3

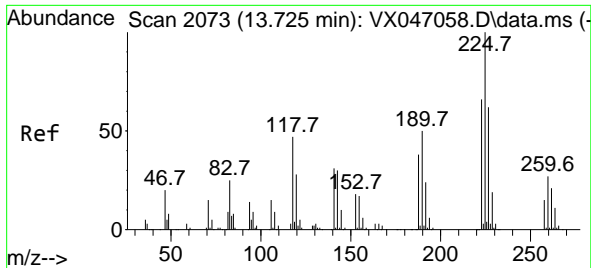
Tgt Ion: 75 Resp: 99850
 Ion Ratio Lower Upper
 75 100
 77 1.3 21.6 65.0#



#81
 trans-1,4-Dichloro-2-butene
 Concen: 60.661 ug/l
 RT: 11.079 min Scan# 1639
 Delta R.T. 0.061 min
 Lab File: VX047245.D
 Acq: 06 Aug 2025 13:57

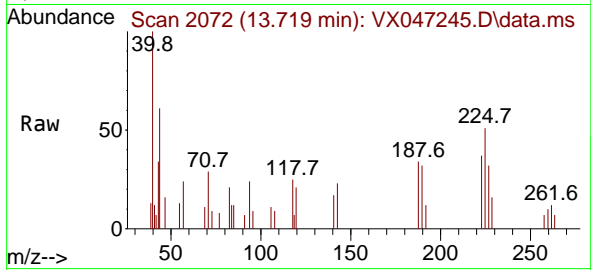
Tgt Ion: 75 Resp: 99850
 Ion Ratio Lower Upper
 75 100
 53 0.0 84.2 126.4#
 89 0.0 36.0 54.0#





#94
 Hexachlorobutadiene
 Concen: 0.371 ug/l
 RT: 13.719 min Scan# 2072
 Delta R.T. -0.006 min
 Lab File: VX047245.D
 Acq: 06 Aug 2025 13:57

Instrument :
 MSVOA_X
 ClientSampleId :
 TP-3



Tgt Ion: 225 Resp: 657

Ion	Ratio	Lower	Upper
225	100		
223	63.8	31.6	95.0
227	52.8	32.9	98.6

