

Data Path : Z:\voasrv\HPCHEM1\MSVOA_X\Data\VX080625\
 Data File : VX047247.D
 Acq On : 06 Aug 2025 15:12
 Operator : JC/MD
 Sample : Q2780-08
 Misc : 5.0mL/MSVOA_X/WATER
 ALS Vial : 11 Sample Multiplier: 1

Instrument :
 MSVOA_X
 ClientSampleId :
 TP-1

Quant Time: Aug 07 01:19:02 2025
 Quant Method : Z:\voasrv\HPCHEM1\MSVOA_X\Method\82X072125W.M
 Quant Title : SW846 8260
 QLast Update : Tue Jul 22 03:59:51 2025
 Response via : Initial Calibration

Compound	R.T.	QIon	Response	Conc	Units	Dev(Min)

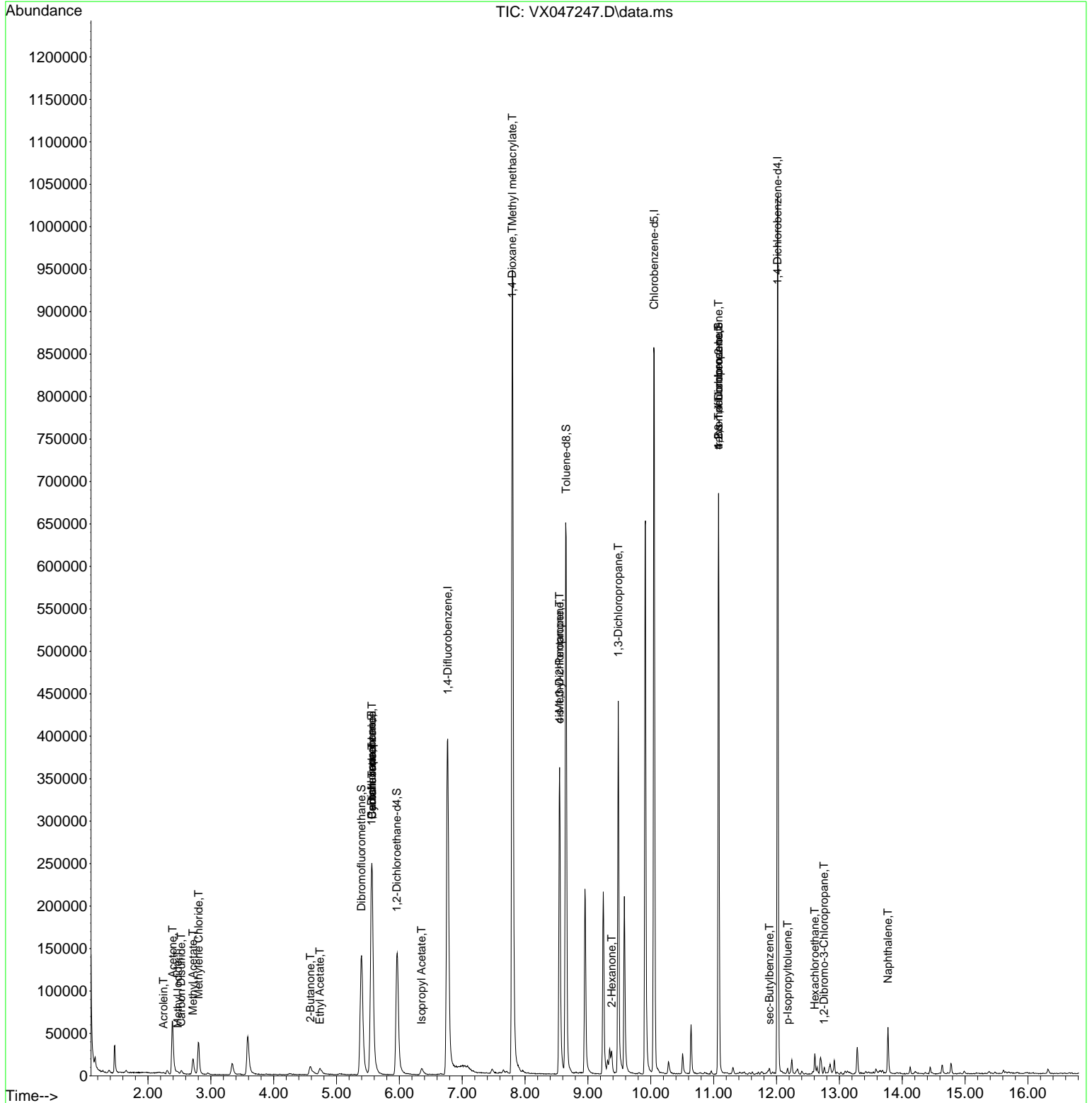
Internal Standards						
1) Pentafluorobenzene	5.562	168	252243	50.000	ug/l	0.00
34) 1,4-Difluorobenzene	6.769	114	430102	50.000	ug/l	0.00
63) Chlorobenzene-d5	10.055	117	388246	50.000	ug/l	0.00
72) 1,4-Dichlorobenzene-d4	12.018	152	198824	50.000	ug/l	0.00
System Monitoring Compounds						
33) 1,2-Dichloroethane-d4	5.958	65	155522	49.495	ug/l	0.00
Spiked Amount	50.000	Range	78 - 117	Recovery	=	99.000%
35) Dibromofluoromethane	5.397	113	133811	50.388	ug/l	0.00
Spiked Amount	50.000	Range	75 - 124	Recovery	=	100.780%
50) Toluene-d8	8.653	98	393341	45.737	ug/l	0.00
Spiked Amount	50.000	Range	92 - 112	Recovery	=	91.480%#
62) 4-Bromofluorobenzene	11.079	95	186769	50.394	ug/l	0.00
Spiked Amount	50.000	Range	83 - 123	Recovery	=	100.780%
Target Compounds						
						Qvalue
10) Methyl Iodide	2.477	142	1910	0.586	ug/l #	78
11) Tert butyl alcohol	2.965	59	579	Below Cal	#	81
13) Acrolein	2.246	56	177	0.262	ug/l #	1
16) Acetone	2.392	43	89399	71.022	ug/l	93
17) Carbon Disulfide	2.526	76	4194	0.457	ug/l	97
18) Methyl Acetate	2.715	43	27955	8.357	ug/l	98
20) Methylene Chloride	2.806	84	18441	5.325	ug/l	97
25) 2-Butanone	4.587	43	21022	11.470	ug/l	92
31) Cyclohexane	5.562	56	6007	1.023	ug/l #	1
36) 1,1-Dichloropropene	5.556	75	19895	4.395	ug/l #	51
37) Ethyl Acetate	4.733	43	17763	4.259	ug/l #	93
38) Carbon Tetrachloride	5.562	117	26739	5.534	ug/l #	17
43) Isopropyl Acetate	6.355	43	10784	1.658	ug/l #	96
48) Methyl methacrylate	7.799	41	89128	25.160	ug/l #	47
49) 1,4-Dioxane	7.793	88	48	1.191	ug/l #	1
51) 4-Methyl-2-Pentanone	8.549	43	139058	35.978	ug/l #	50
54) cis-1,3-Dichloropropene	8.549	75	62372	12.323	ug/l #	62
57) 1,3-Dichloropropane	9.482	76	3701	0.705	ug/l #	43
59) 2-Hexanone	9.378	43	20667	8.093	ug/l #	25
76) 1,2,3-Trichloropropane	11.079	75	95668	25.996	ug/l #	34
81) trans-1,4-Dichloro-2-b...	11.079	75	95668	66.975	ug/l #	8
85) sec-Butylbenzene	11.890	105	3366	0.207	ug/l	98
86) p-Isopropyltoluene	12.177	119	2878	0.214	ug/l	92
90) Hexachloroethane	12.610	117	949	0.394	ug/l #	15
92) 1,2-Dibromo-3-Chloropr...	12.756	75	203	0.236	ug/l #	2
95) Naphthalene	13.774	128	34140	2.580	ug/l	99

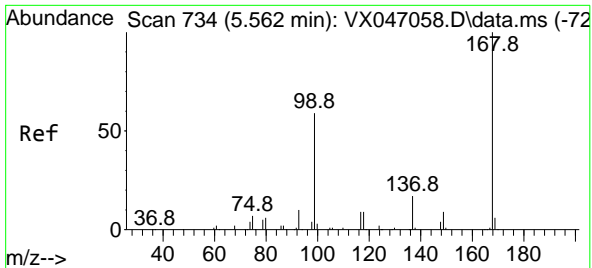
(#) = qualifier out of range (m) = manual integration (+) = signals summed

Data Path : Z:\voasrv\HPCHEM1\MSVOA_X\Data\VX080625\
 Data File : VX047247.D
 Acq On : 06 Aug 2025 15:12
 Operator : JC/MD
 Sample : Q2780-08
 Misc : 5.0mL/MSVOA_X/WATER
 ALS Vial : 11 Sample Multiplier: 1

Instrument :
 MSVOA_X
 ClientSampleId :
 TP-1

Quant Time: Aug 07 01:19:02 2025
 Quant Method : Z:\voasrv\HPCHEM1\MSVOA_X\Method\82X072125W.M
 Quant Title : SW846 8260
 QLast Update : Tue Jul 22 03:59:51 2025
 Response via : Initial Calibration

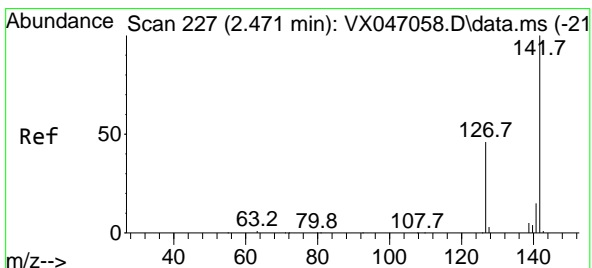
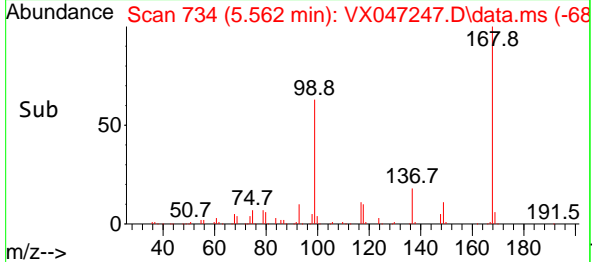
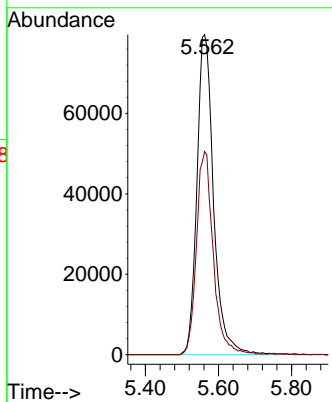
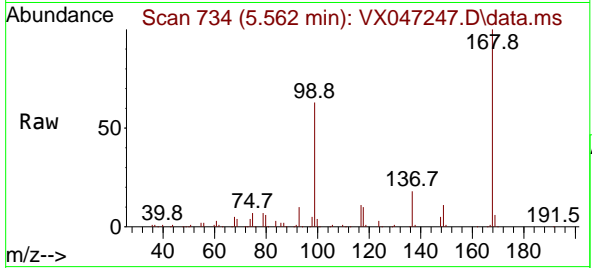




#1
 Pentafluorobenzene
 Concen: 50.000 ug/l
 RT: 5.562 min Scan# 71
 Delta R.T. 0.000 min
 Lab File: VX047247.D
 Acq: 06 Aug 2025 15:12

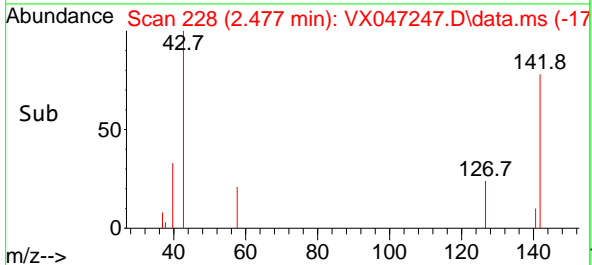
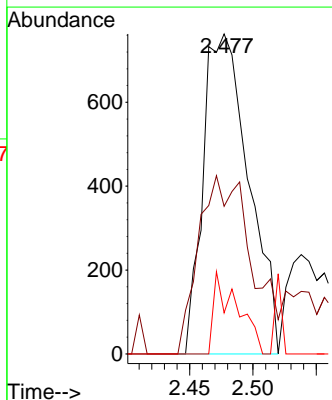
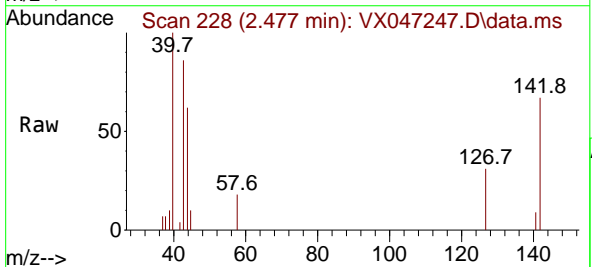
Instrument :
 MSVOA_X
 ClientSampleId :
 TP-1

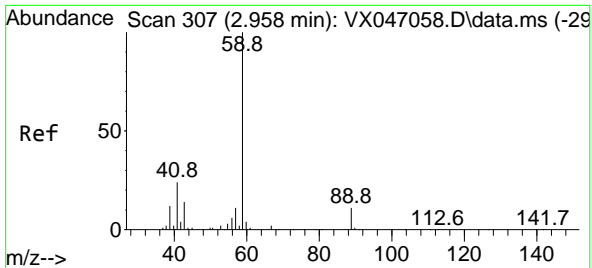
Tgt Ion:168 Resp: 252243
 Ion Ratio Lower Upper
 168 100
 99 63.5 48.0 72.0



#10
 Methyl Iodide
 Concen: 0.586 ug/l
 RT: 2.477 min Scan# 228
 Delta R.T. 0.007 min
 Lab File: VX047247.D
 Acq: 06 Aug 2025 15:12

Tgt Ion:142 Resp: 1910
 Ion Ratio Lower Upper
 142 100
 127 64.5 36.6 54.8#
 141 13.4 10.9 16.3

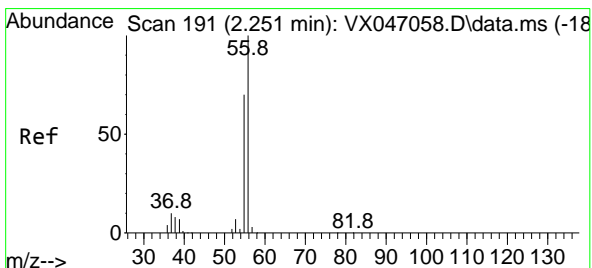
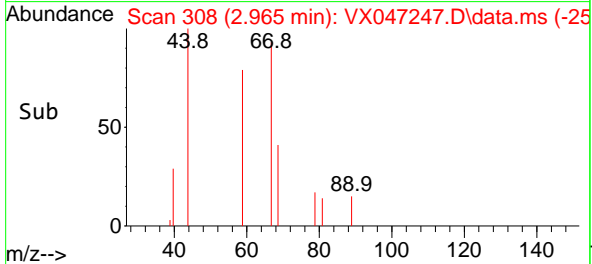
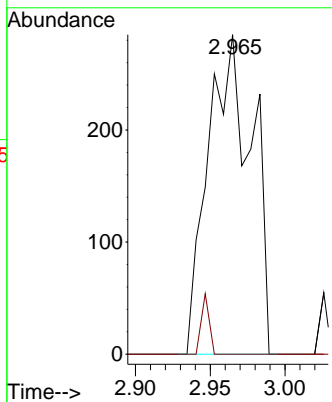
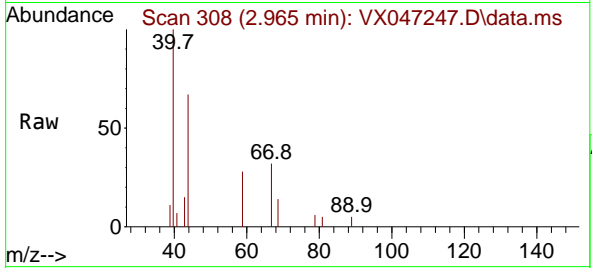




#11
 Tert butyl alcohol
 Concen: Below Cal
 RT: 2.965 min Scan# 30
 Delta R.T. 0.007 min
 Lab File: VX047247.D
 Acq: 06 Aug 2025 15:12

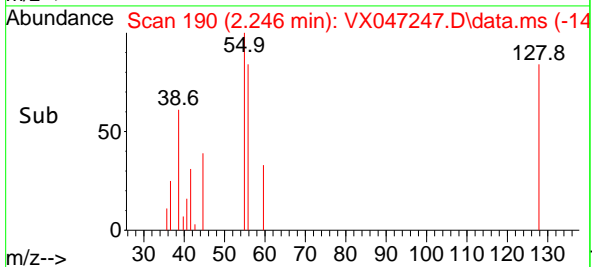
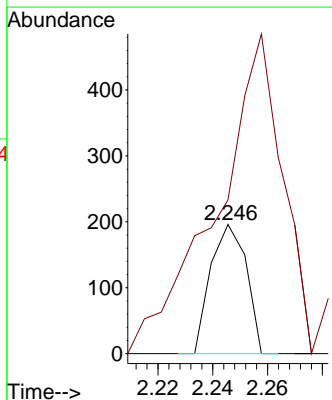
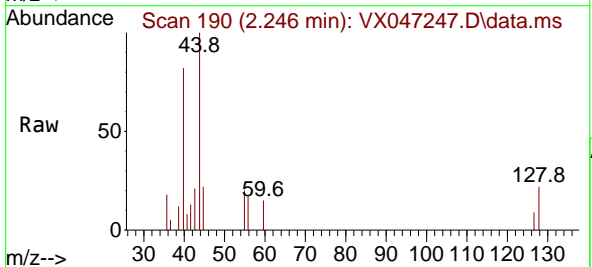
Instrument :
 MSVOA_X
 ClientSampleId :
 TP-1

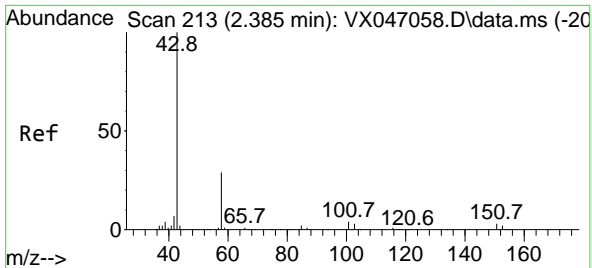
Tgt Ion: 59 Resp: 579
 Ion Ratio Lower Upper
 59 100
 57 3.5 8.5 12.7#



#13
 Acrolein
 Concen: 0.262 ug/l
 RT: 2.246 min Scan# 190
 Delta R.T. -0.006 min
 Lab File: VX047247.D
 Acq: 06 Aug 2025 15:12

Tgt Ion: 56 Resp: 177
 Ion Ratio Lower Upper
 56 100
 55 500.6 55.7 83.5#

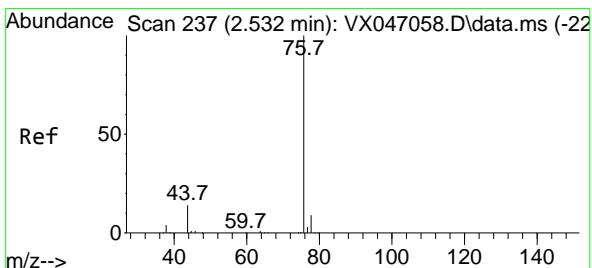
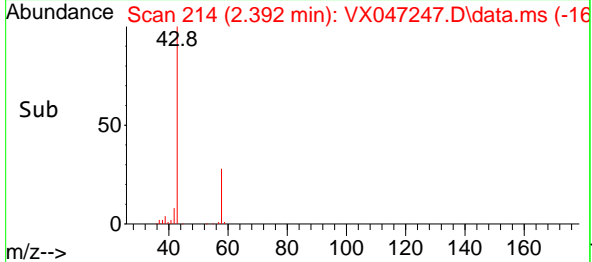
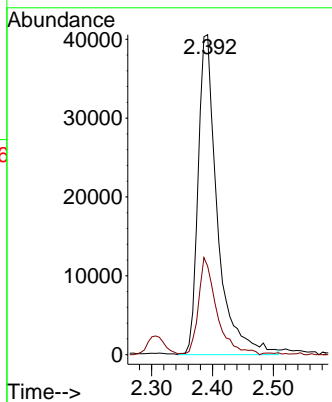
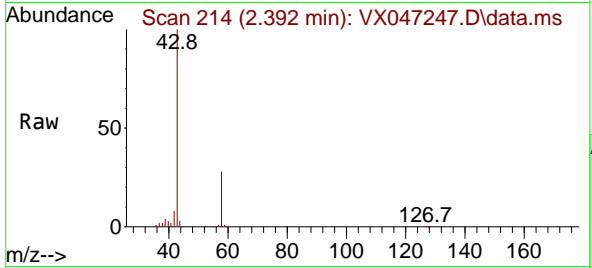




#16
 Acetone
 Concen: 71.022 ug/l
 RT: 2.392 min Scan# 21
 Delta R.T. 0.007 min
 Lab File: VX047247.D
 Acq: 06 Aug 2025 15:12

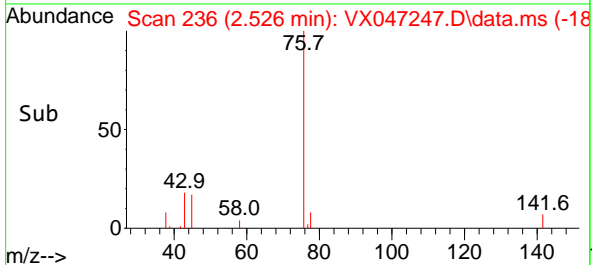
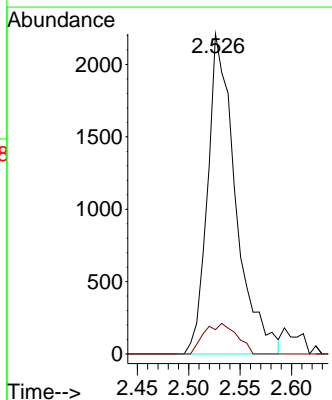
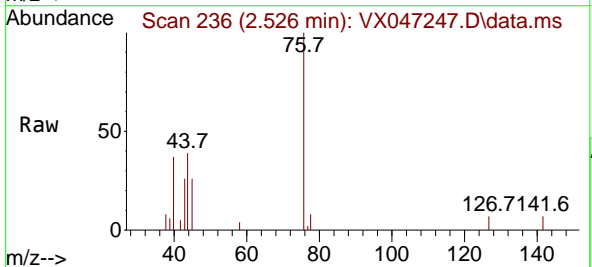
Instrument :
 MSVOA_X
 ClientSampleId :
 TP-1

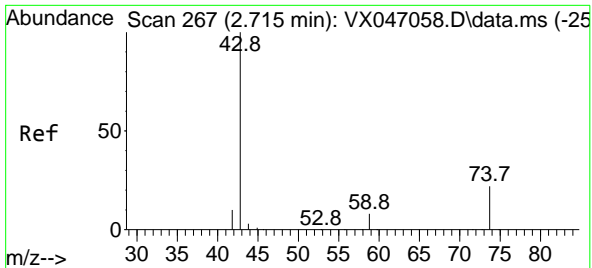
Tgt Ion: 43 Resp: 89399
 Ion Ratio Lower Upper
 43 100
 58 26.4 24.0 36.0



#17
 Carbon Disulfide
 Concen: 0.457 ug/l
 RT: 2.526 min Scan# 236
 Delta R.T. -0.006 min
 Lab File: VX047247.D
 Acq: 06 Aug 2025 15:12

Tgt Ion: 76 Resp: 4194
 Ion Ratio Lower Upper
 76 100
 78 7.6 7.0 10.4



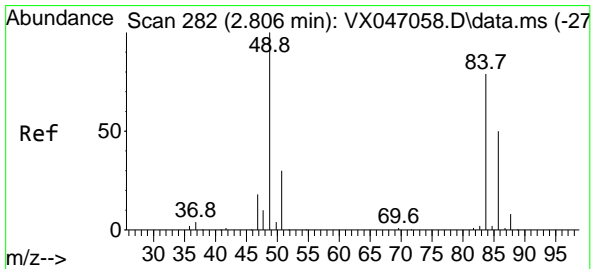
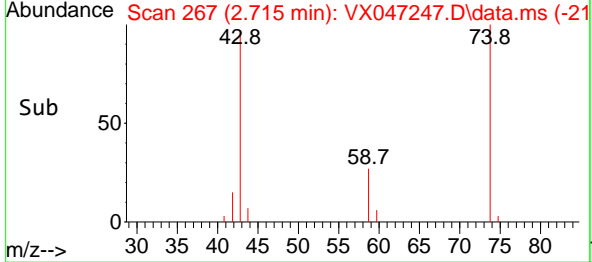
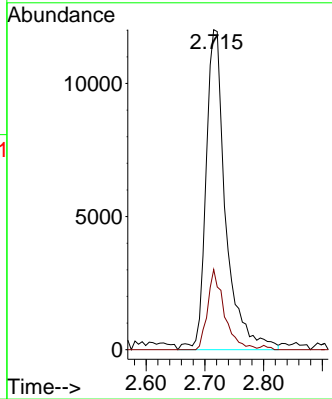
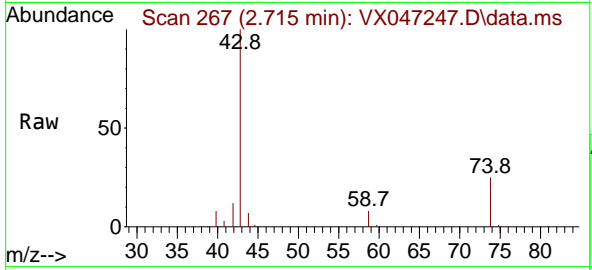


#18
 Methyl Acetate
 Concen: 8.357 ug/l
 RT: 2.715 min Scan# 20
 Delta R.T. 0.000 min
 Lab File: VX047247.D
 Acq: 06 Aug 2025 15:12

Instrument : MSVOA_X
 ClientSampleId : TP-1

Tgt Ion: 43 Resp: 27955

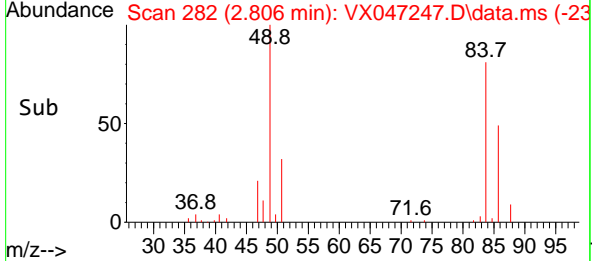
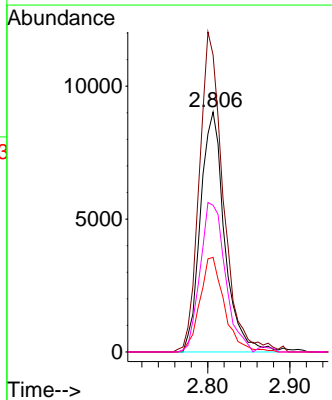
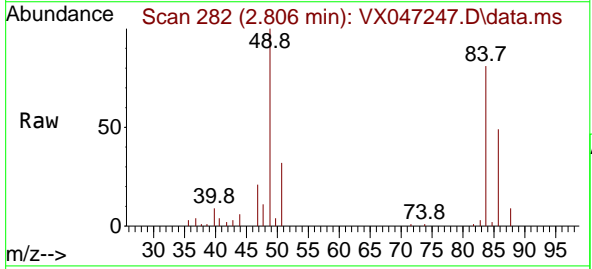
Ion	Ratio	Lower	Upper
43	100		
74	21.2	17.7	26.5

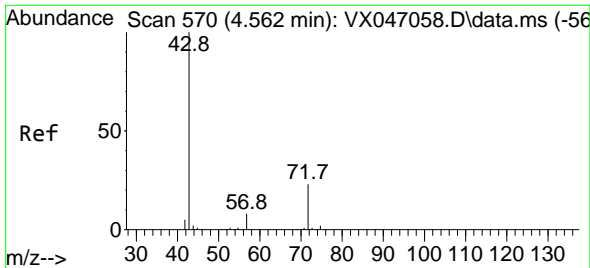


#20
 Methylene Chloride
 Concen: 5.325 ug/l
 RT: 2.806 min Scan# 282
 Delta R.T. 0.000 min
 Lab File: VX047247.D
 Acq: 06 Aug 2025 15:12

Tgt Ion: 84 Resp: 18441

Ion	Ratio	Lower	Upper
84	100		
49	122.7	101.6	152.4
51	39.4	30.3	45.5
86	61.1	50.6	75.8

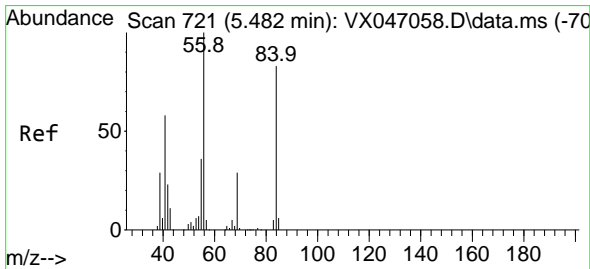
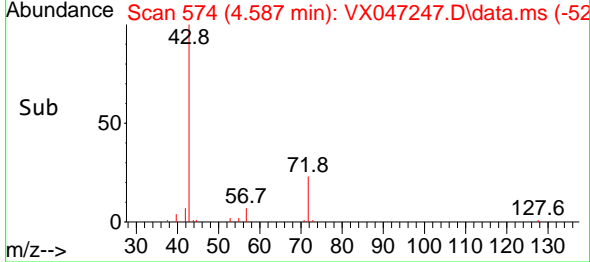
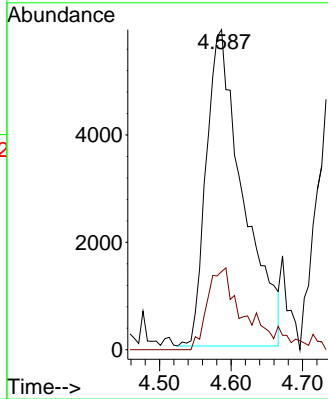
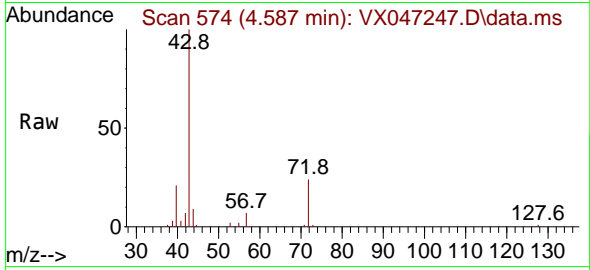




#25
 2-Butanone
 Concen: 11.470 ug/l
 RT: 4.587 min Scan# 51
 Delta R.T. 0.025 min
 Lab File: VX047247.D
 Acq: 06 Aug 2025 15:12

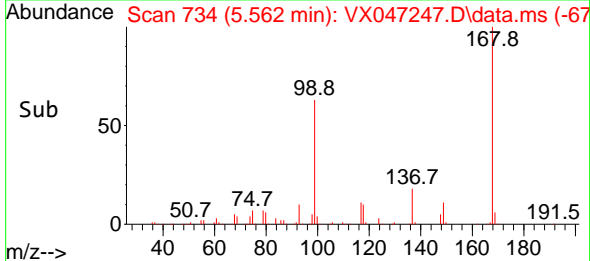
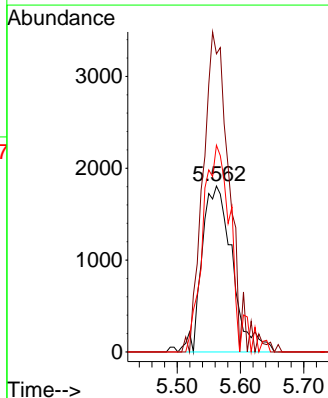
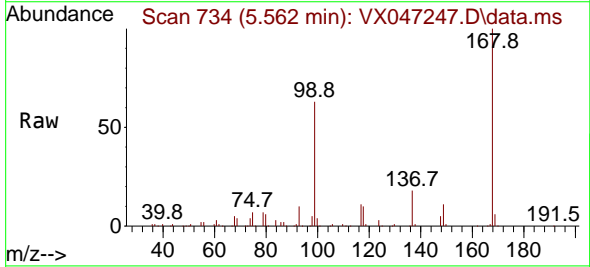
Instrument :
 MSVOA_X
 ClientSampleId :
 TP-1

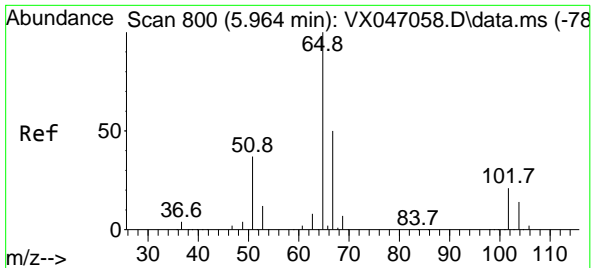
Tgt Ion: 43 Resp: 21022
 Ion Ratio Lower Upper
 43 100
 72 27.4 18.8 28.2



#31
 Cyclohexane
 Concen: 1.023 ug/l
 RT: 5.562 min Scan# 734
 Delta R.T. 0.080 min
 Lab File: VX047247.D
 Acq: 06 Aug 2025 15:12

Tgt Ion: 56 Resp: 6007
 Ion Ratio Lower Upper
 56 100
 69 179.7 23.3 34.9#
 84 124.6 66.5 99.7#

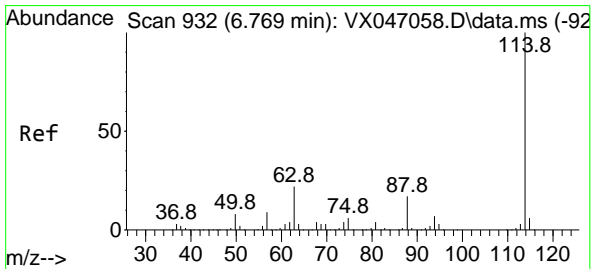
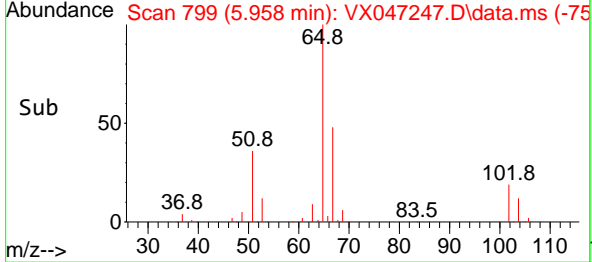
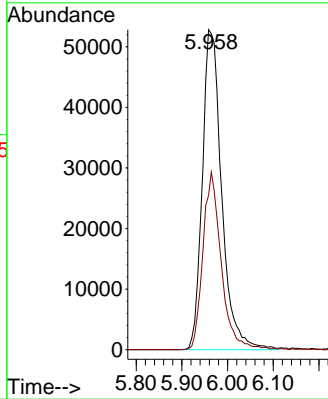
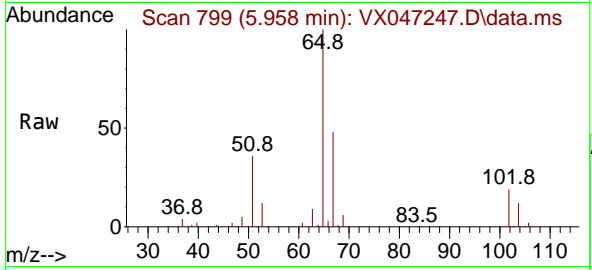




#33
 1,2-Dichloroethane-d4
 Concen: 49.495 ug/l
 RT: 5.958 min Scan# 799
 Delta R.T. -0.006 min
 Lab File: VX047247.D
 Acq: 06 Aug 2025 15:12

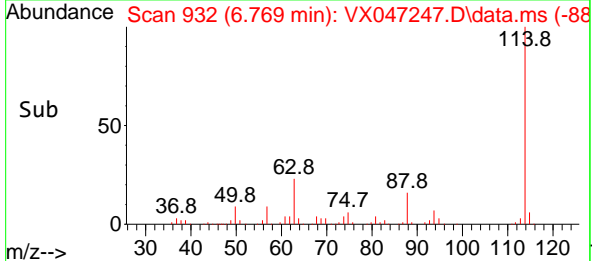
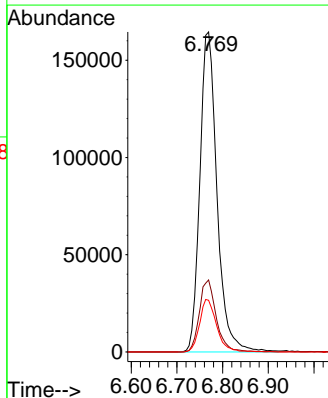
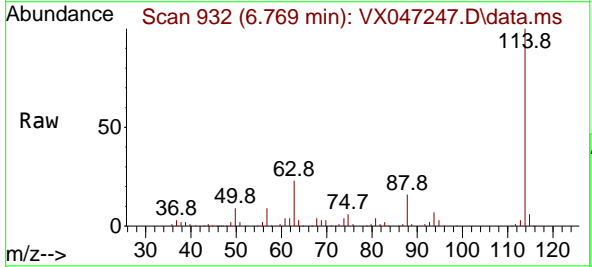
Instrument : MSVOA_X
 ClientSampleId : TP-1

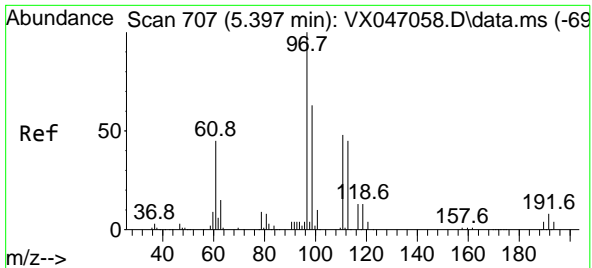
Tgt Ion: 65 Resp: 155522
 Ion Ratio Lower Upper
 65 100
 67 52.3 0.0 104.8



#34
 1,4-Difluorobenzene
 Concen: 50.000 ug/l
 RT: 6.769 min Scan# 932
 Delta R.T. 0.000 min
 Lab File: VX047247.D
 Acq: 06 Aug 2025 15:12

Tgt Ion: 114 Resp: 430102
 Ion Ratio Lower Upper
 114 100
 63 22.5 0.0 43.2
 88 16.2 0.0 33.8



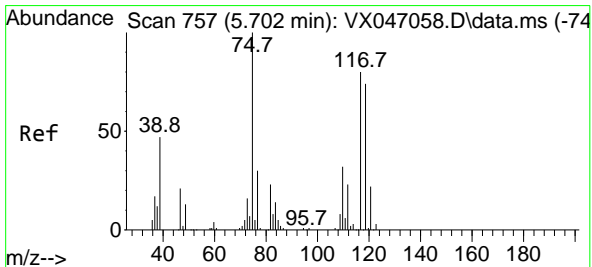
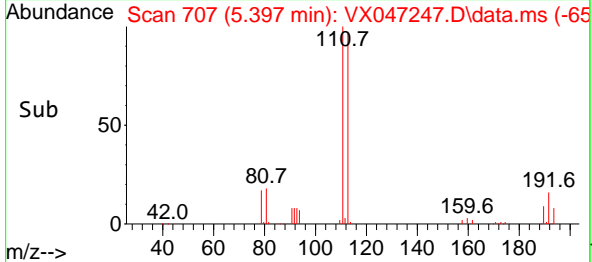
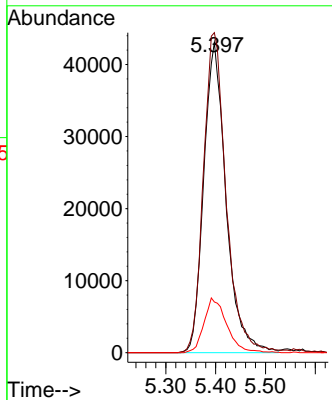
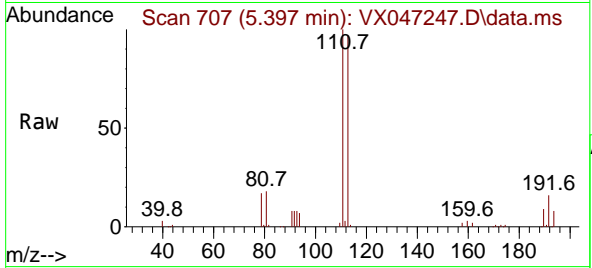


#35
 Dibromofluoromethane
 Concen: 50.388 ug/l
 RT: 5.397 min Scan# 707
 Delta R.T. 0.000 min
 Lab File: VX047247.D
 Acq: 06 Aug 2025 15:12

Instrument :
 MSVOA_X
 ClientSampleId :
 TP-1

Tgt Ion:113 Resp: 133811

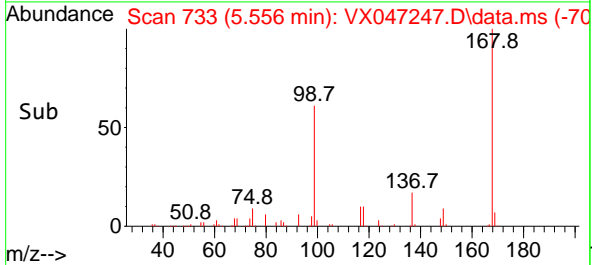
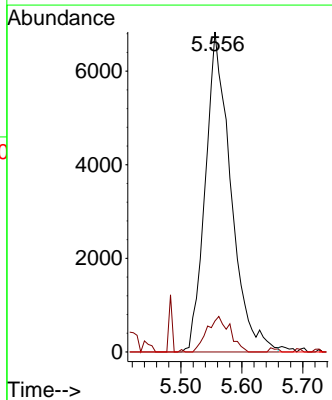
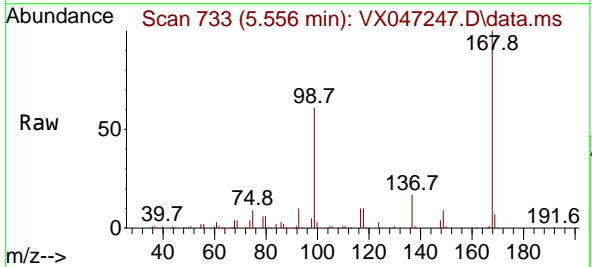
Ion	Ratio	Lower	Upper
113	100		
111	105.2	82.6	124.0
192	18.0	14.9	22.3

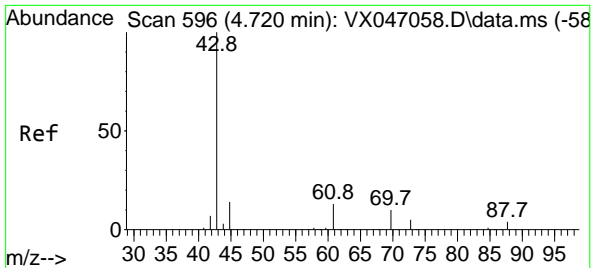


#36
 1,1-Dichloropropene
 Concen: 4.395 ug/l
 RT: 5.556 min Scan# 733
 Delta R.T. -0.146 min
 Lab File: VX047247.D
 Acq: 06 Aug 2025 15:12

Tgt Ion: 75 Resp: 19895

Ion	Ratio	Lower	Upper
75	100		
110	10.0	17.2	51.5#
77	0.0	25.1	37.7#

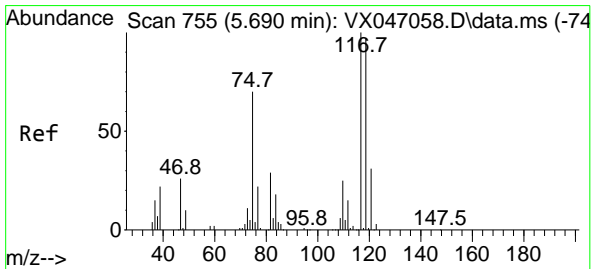
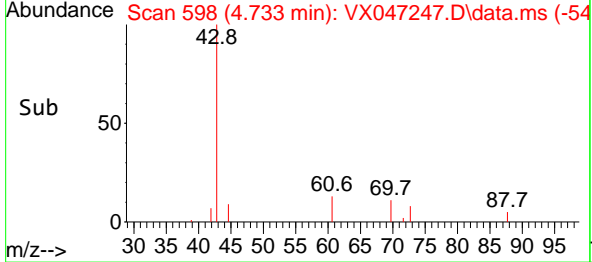
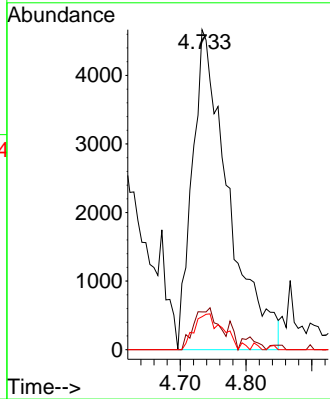
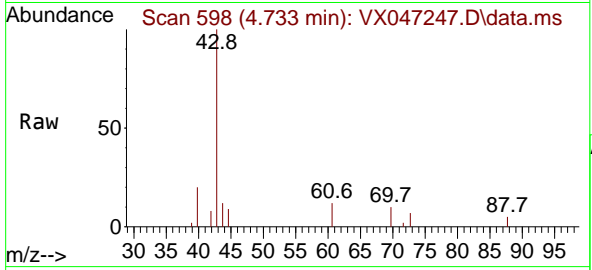




#37
 Ethyl Acetate
 Concen: 4.259 ug/l
 RT: 4.733 min Scan# 598
 Delta R.T. 0.013 min
 Lab File: VX047247.D
 Acq: 06 Aug 2025 15:12

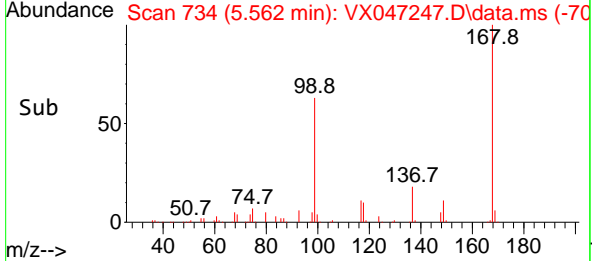
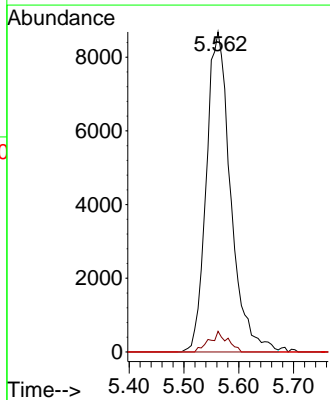
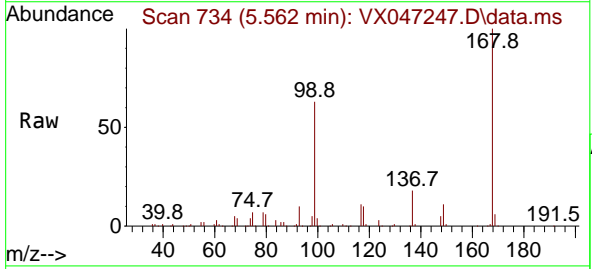
Instrument : MSVOA_X
 ClientSampleId : TP-1

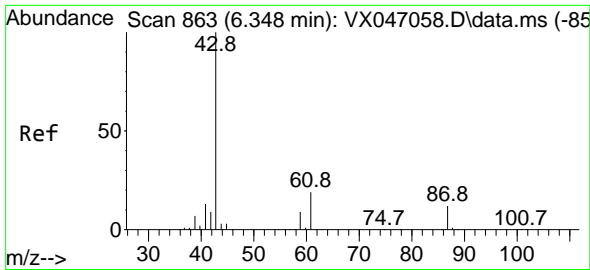
Tgt Ion	Resp	Lower	Upper
43	17763		
61	8.8	10.2	15.2#
70	8.7	8.1	12.1



#38
 Carbon Tetrachloride
 Concen: 5.534 ug/l
 RT: 5.562 min Scan# 734
 Delta R.T. -0.128 min
 Lab File: VX047247.D
 Acq: 06 Aug 2025 15:12

Tgt Ion	Resp	Lower	Upper
117	26739		
119	6.4	76.6	115.0#
121	0.0	24.4	36.6#

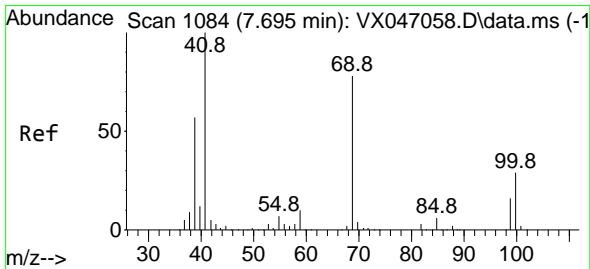
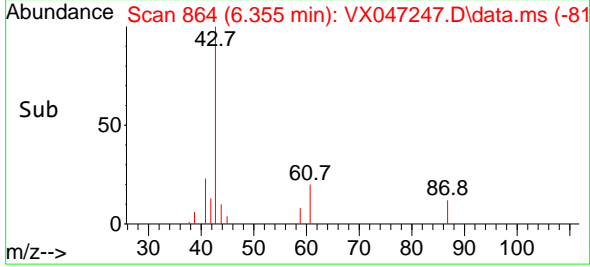
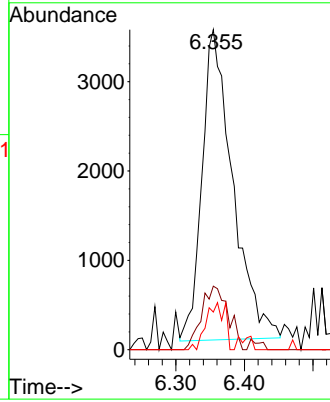
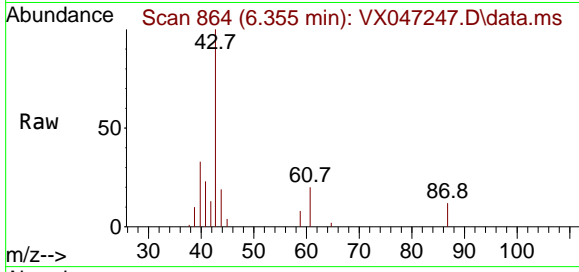




#43
 Isopropyl Acetate
 Concen: 1.658 ug/l
 RT: 6.355 min Scan# 80
 Delta R.T. 0.007 min
 Lab File: VX047247.D
 Acq: 06 Aug 2025 15:12

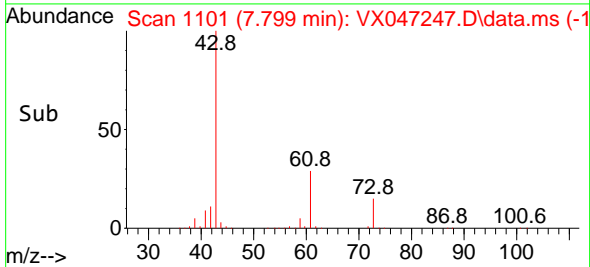
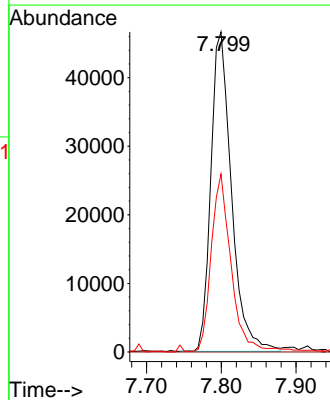
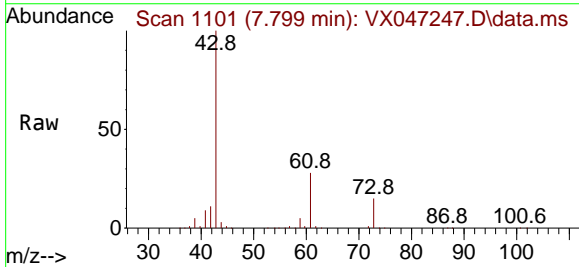
Instrument :
 MSVOA_X
 ClientSampleId :
 TP-1

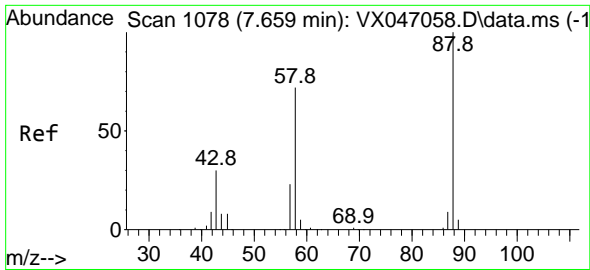
Tgt Ion: 43 Resp: 10784
 Ion Ratio Lower Upper
 43 100
 61 17.8 15.1 22.7
 87 9.3 9.7 14.5#



#48
 Methyl methacrylate
 Concen: 25.160 ug/l
 RT: 7.799 min Scan# 1101
 Delta R.T. 0.104 min
 Lab File: VX047247.D
 Acq: 06 Aug 2025 15:12

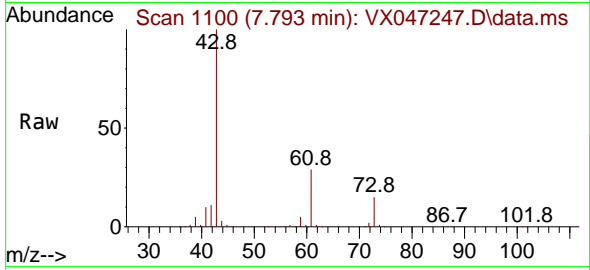
Tgt Ion: 41 Resp: 89128
 Ion Ratio Lower Upper
 41 100
 69 0.0 62.3 93.5#
 39 53.7 44.8 67.2



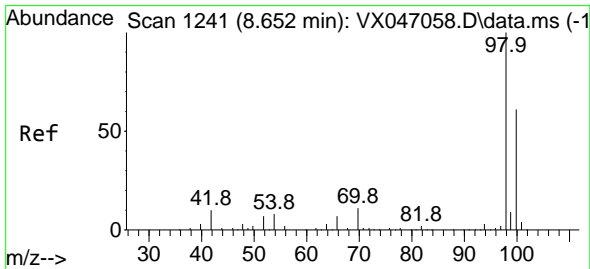
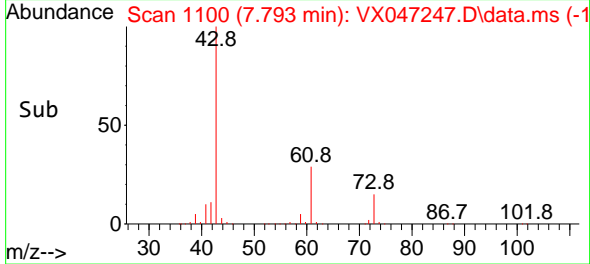
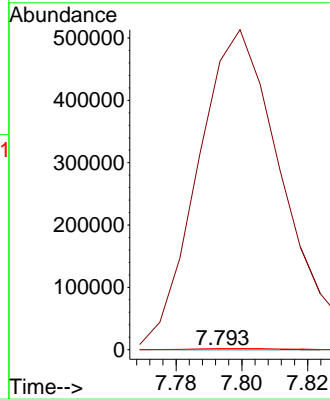


#49
 1,4-Dioxane
 Concen: 1.191 ug/l
 RT: 7.793 min Scan# 1100
 Delta R.T. 0.135 min
 Lab File: VX047247.D
 Acq: 06 Aug 2025 15:12

Instrument : MSVOA_X
 ClientSampleId : TP-1

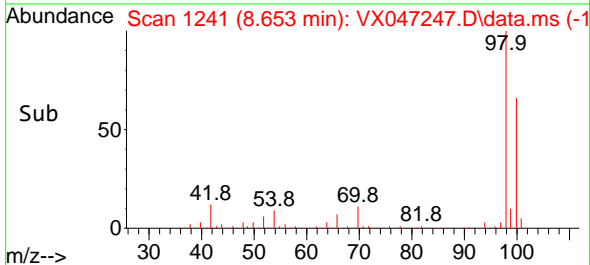
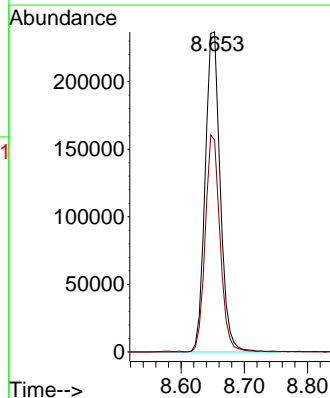
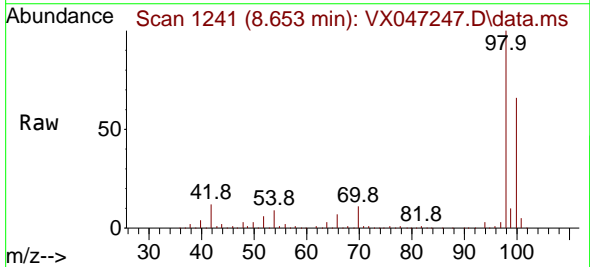


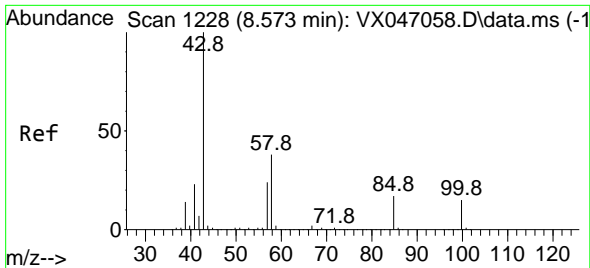
Tgt Ion: 88 Resp: 48
 Ion Ratio Lower Upper
 88 100
 43 2018329.2 33.6 50.4#
 58 8160.4 58.8 88.2#



#50
 Toluene-d8
 Concen: 45.737 ug/l
 RT: 8.653 min Scan# 1241
 Delta R.T. 0.000 min
 Lab File: VX047247.D
 Acq: 06 Aug 2025 15:12

Tgt Ion: 98 Resp: 393341
 Ion Ratio Lower Upper
 98 100
 100 66.5 53.3 79.9

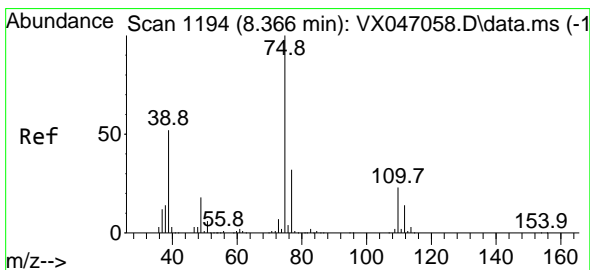
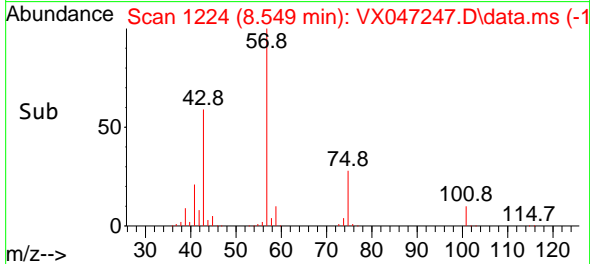
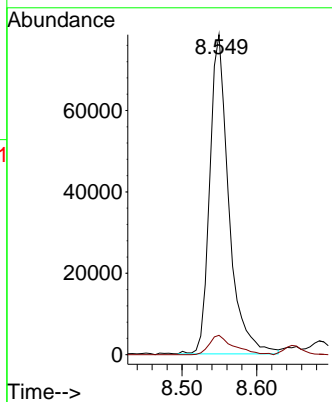
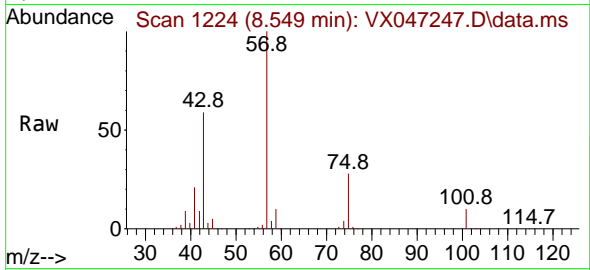




#51
 4-Methyl-2-Pentanone
 Concen: 35.978 ug/l
 RT: 8.549 min Scan# 1111
 Delta R.T. -0.024 min
 Lab File: VX047247.D
 Acq: 06 Aug 2025 15:12

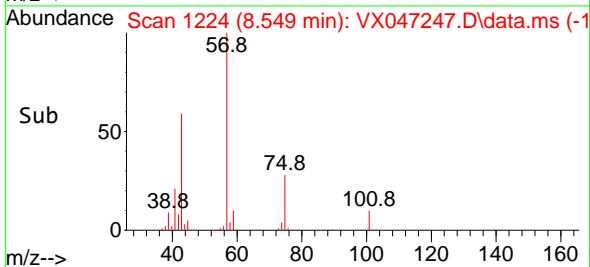
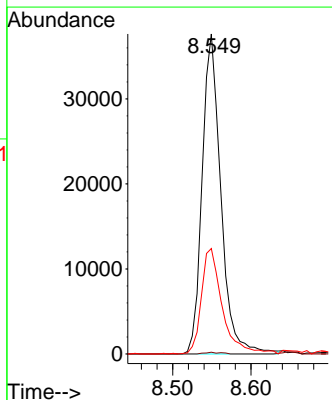
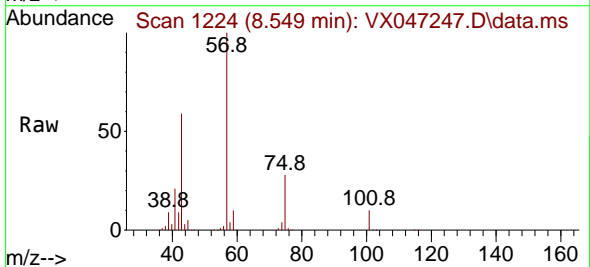
Instrument : MSVOA_X
 ClientSampleId : TP-1

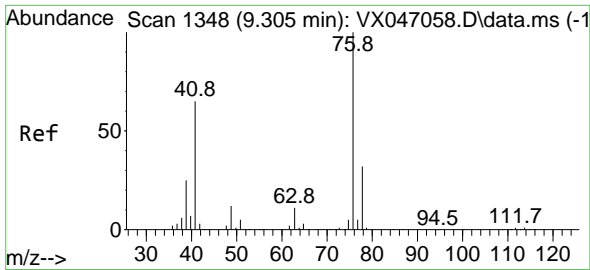
Tgt Ion: 43 Resp: 139058
 Ion Ratio Lower Upper
 43 100
 58 7.7 30.6 45.8#



#54
 cis-1,3-Dichloropropene
 Concen: 12.323 ug/l
 RT: 8.549 min Scan# 1224
 Delta R.T. 0.183 min
 Lab File: VX047247.D
 Acq: 06 Aug 2025 15:12

Tgt Ion: 75 Resp: 62372
 Ion Ratio Lower Upper
 75 100
 77 0.6 25.4 38.0#
 39 33.0 41.8 62.6#

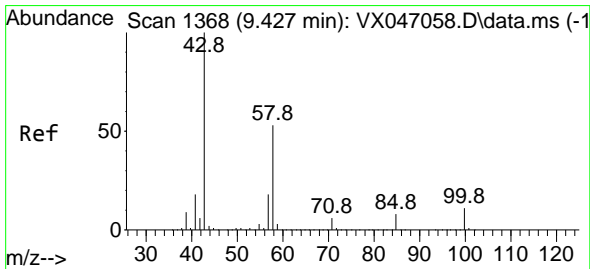
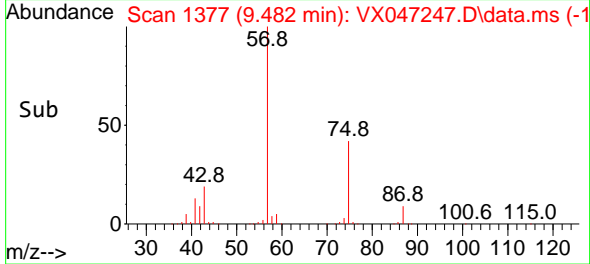
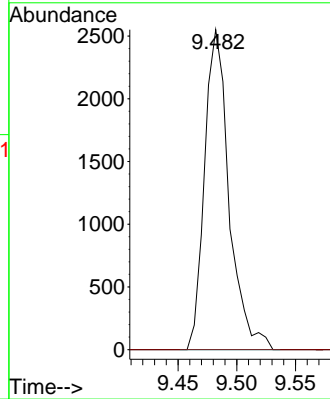
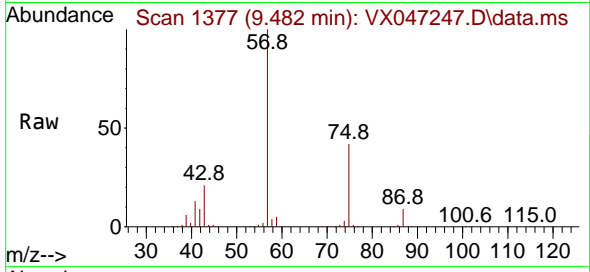




#57
 1,3-Dichloropropane
 Concen: 0.705 ug/l
 RT: 9.482 min Scan# 1377
 Delta R.T. 0.177 min
 Lab File: VX047247.D
 Acq: 06 Aug 2025 15:12

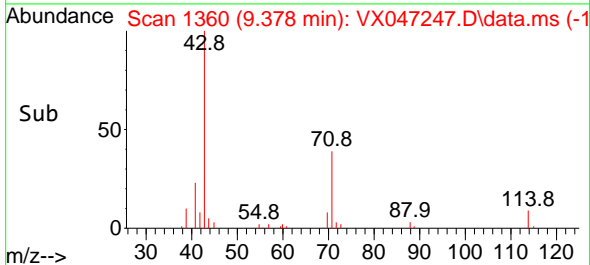
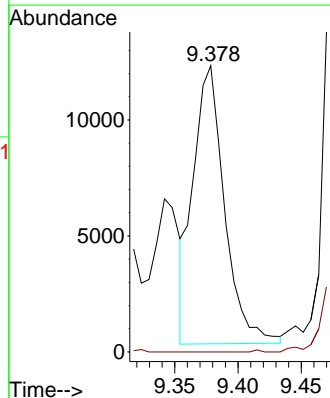
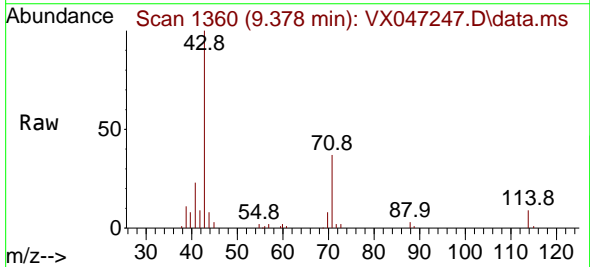
Instrument :
 MSVOA_X
 ClientSampleId :
 TP-1

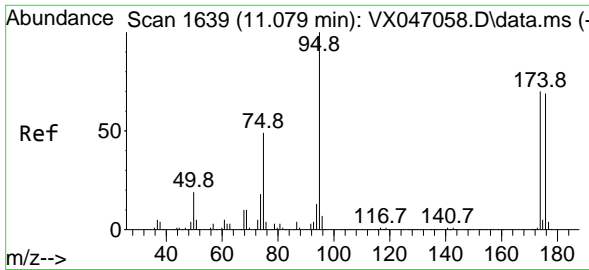
Tgt Ion: 76 Resp: 3701
 Ion Ratio Lower Upper
 76 100
 78 0.0 25.5 38.3#



#59
 2-Hexanone
 Concen: 8.093 ug/l
 RT: 9.378 min Scan# 1360
 Delta R.T. -0.048 min
 Lab File: VX047247.D
 Acq: 06 Aug 2025 15:12

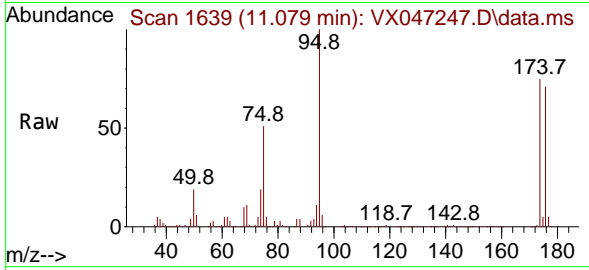
Tgt Ion: 43 Resp: 20667
 Ion Ratio Lower Upper
 43 100
 58 0.0 26.5 79.5#



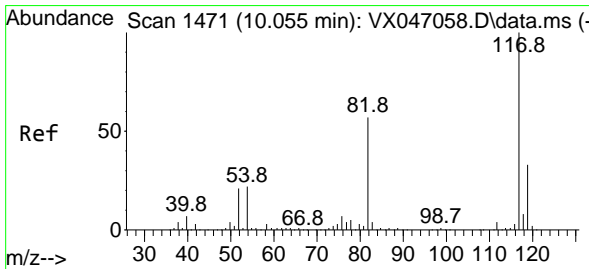
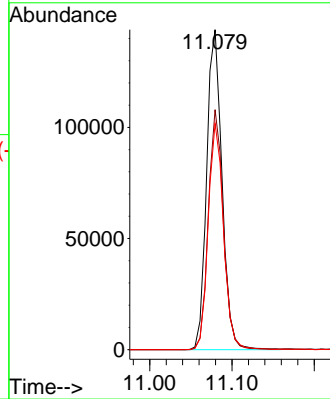
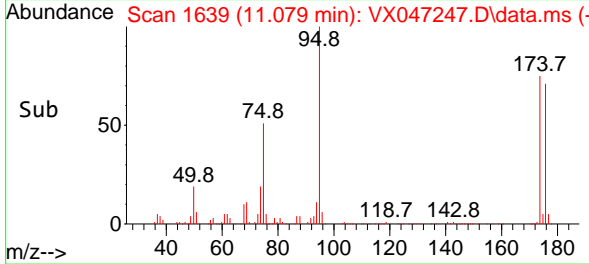


#62
 4-Bromofluorobenzene
 Concen: 50.394 ug/l
 RT: 11.079 min Scan# 1639
 Delta R.T. 0.000 min
 Lab File: VX047247.D
 Acq: 06 Aug 2025 15:12

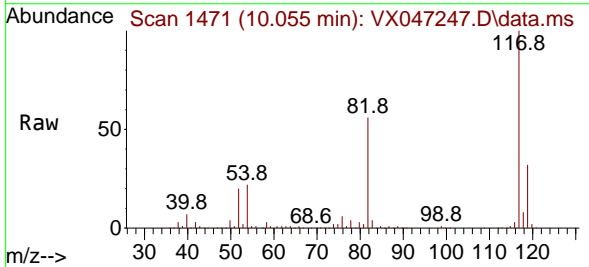
Instrument : MSVOA_X
 ClientSampleId : TP-1



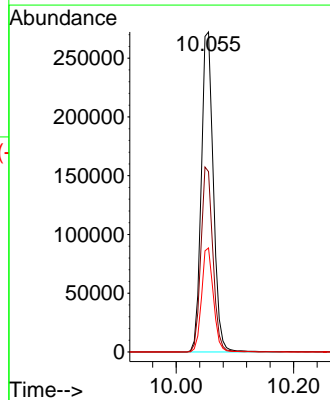
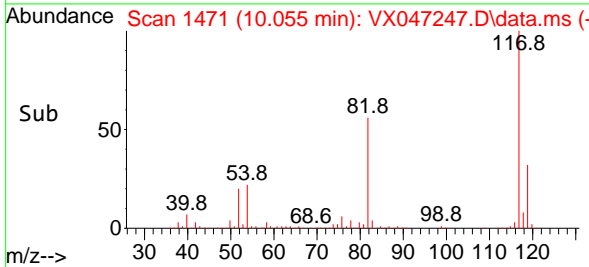
Tgt Ion: 95 Resp: 186769
 Ion Ratio Lower Upper
 95 100
 174 73.5 0.0 144.6
 176 70.3 0.0 139.6

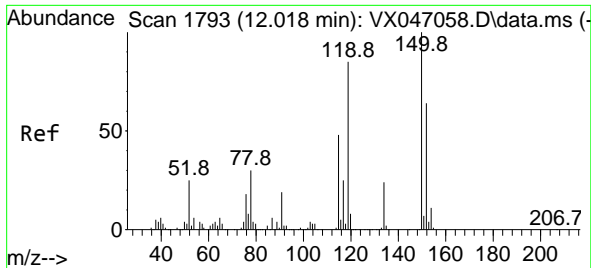


#63
 Chlorobenzene-d5
 Concen: 50.000 ug/l
 RT: 10.055 min Scan# 1471
 Delta R.T. 0.000 min
 Lab File: VX047247.D
 Acq: 06 Aug 2025 15:12



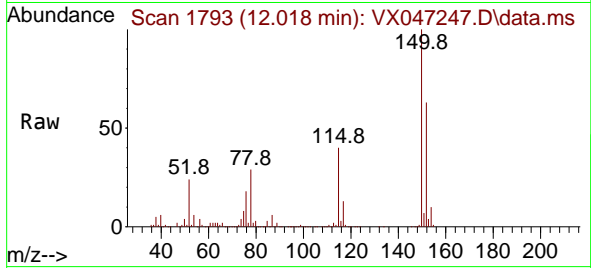
Tgt Ion: 117 Resp: 388246
 Ion Ratio Lower Upper
 117 100
 82 56.4 45.4 68.2
 119 32.5 26.1 39.1



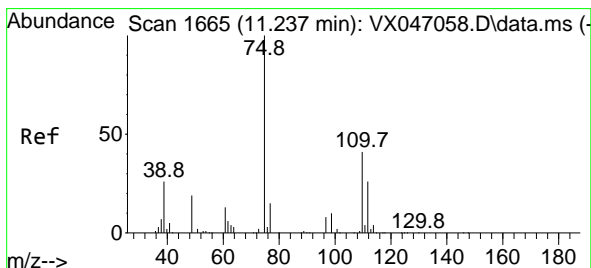
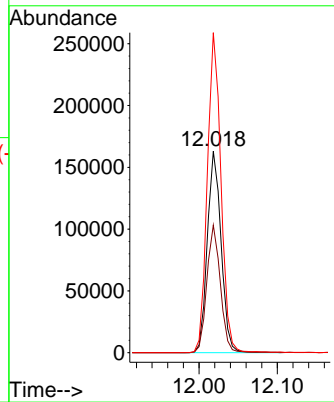
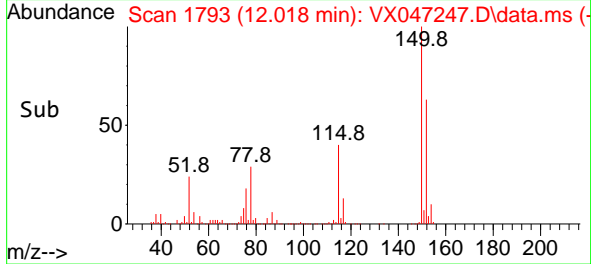


#72
 1,4-Dichlorobenzene-d4
 Concen: 50.000 ug/l
 RT: 12.018 min Scan# 1
 Delta R.T. 0.000 min
 Lab File: VX047247.D
 Acq: 06 Aug 2025 15:12

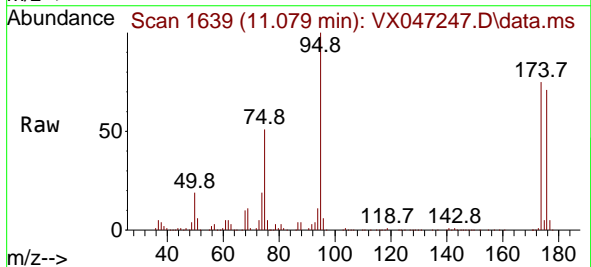
Instrument :
 MSVOA_X
 ClientSampleId :
 TP-1



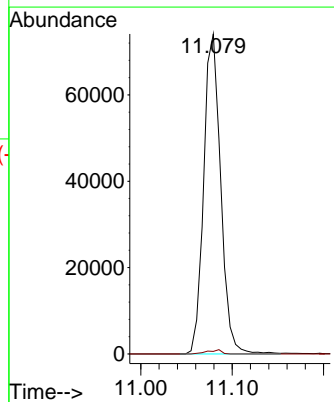
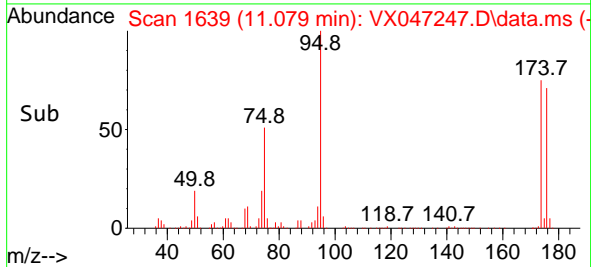
Tgt Ion:152 Resp: 198824
 Ion Ratio Lower Upper
 152 100
 115 61.9 45.6 136.7
 150 157.0 0.0 354.6

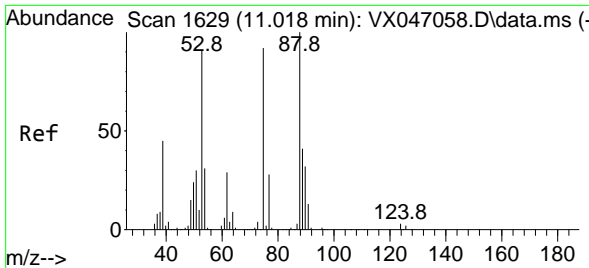


#76
 1,2,3-Trichloropropane
 Concen: 25.996 ug/l
 RT: 11.079 min Scan# 1639
 Delta R.T. -0.158 min
 Lab File: VX047247.D
 Acq: 06 Aug 2025 15:12



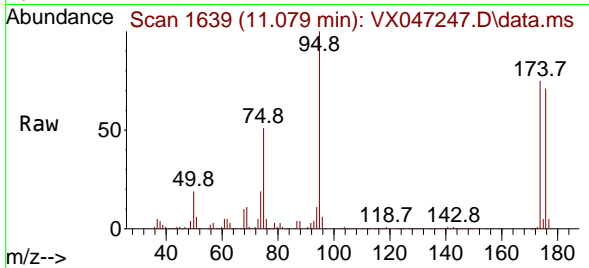
Tgt Ion: 75 Resp: 95668
 Ion Ratio Lower Upper
 75 100
 77 1.1 21.6 65.0#



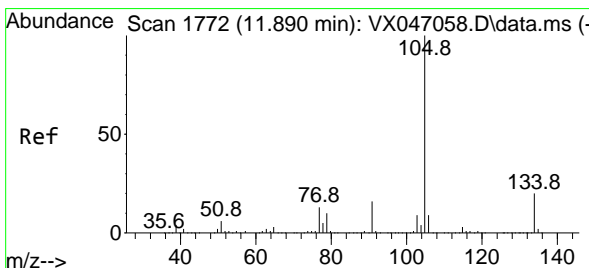
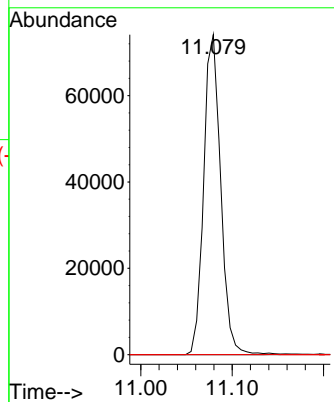
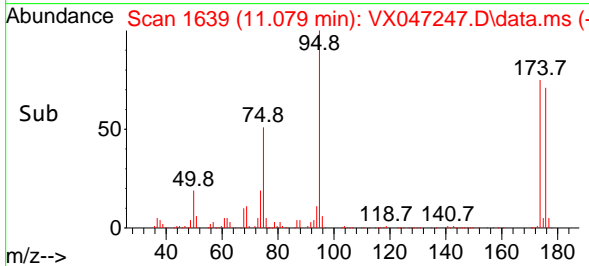


#81
 trans-1,4-Dichloro-2-butene
 Concen: 66.975 ug/l
 RT: 11.079 min Scan# 1629
 Delta R.T. 0.061 min
 Lab File: VX047247.D
 Acq: 06 Aug 2025 15:12

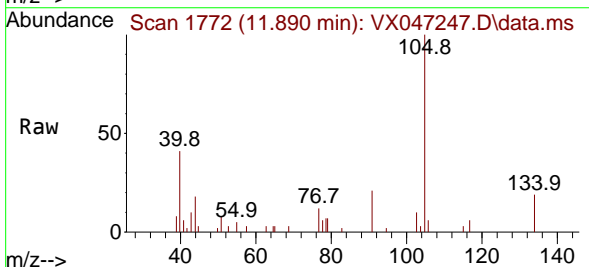
Instrument :
 MSVOA_X
 ClientSampleId :
 TP-1



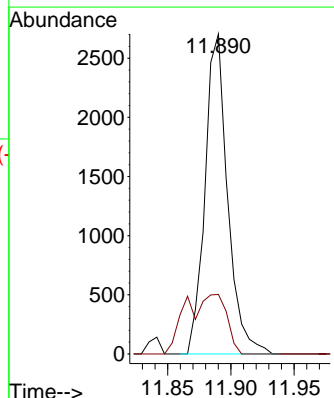
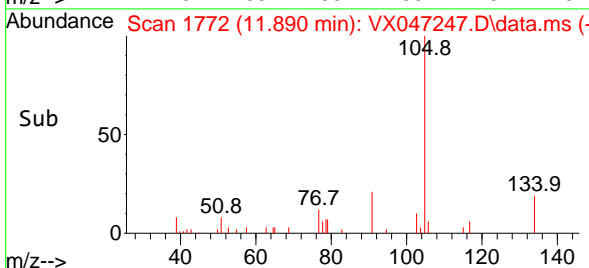
Tgt Ion: 75 Resp: 95668
 Ion Ratio Lower Upper
 75 100
 53 0.0 84.2 126.4#
 89 0.0 36.0 54.0#

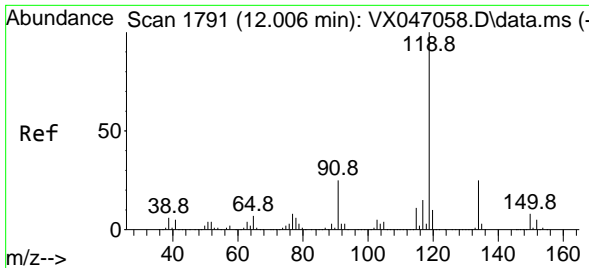


#85
 sec-Butylbenzene
 Concen: 0.207 ug/l
 RT: 11.890 min Scan# 1772
 Delta R.T. 0.000 min
 Lab File: VX047247.D
 Acq: 06 Aug 2025 15:12



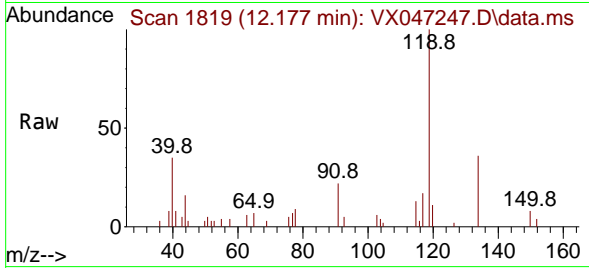
Tgt Ion: 105 Resp: 3366
 Ion Ratio Lower Upper
 105 100
 134 20.6 9.9 29.7



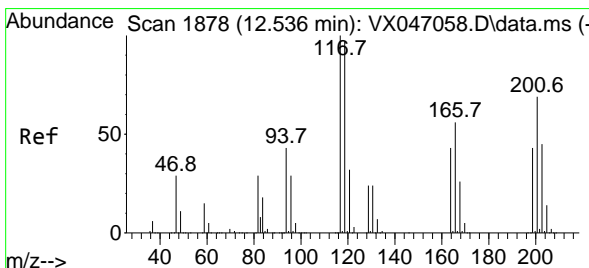
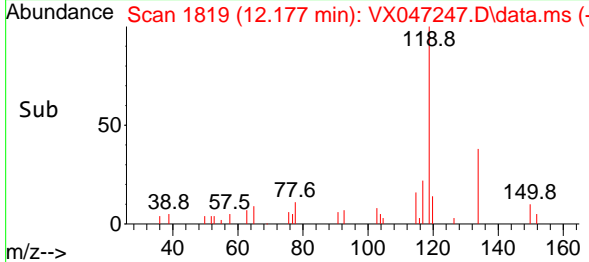
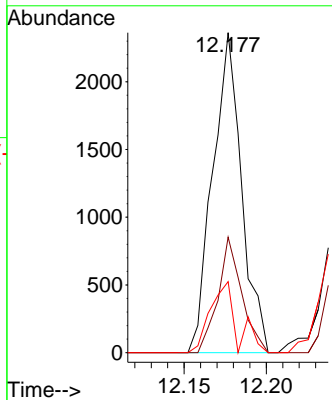


#86
 p-Isopropyltoluene
 Concen: 0.214 ug/l
 RT: 12.177 min Scan# 1819
 Delta R.T. 0.171 min
 Lab File: VX047247.D
 Acq: 06 Aug 2025 15:12

Instrument : MSVOA_X
 ClientSampleId : TP-1

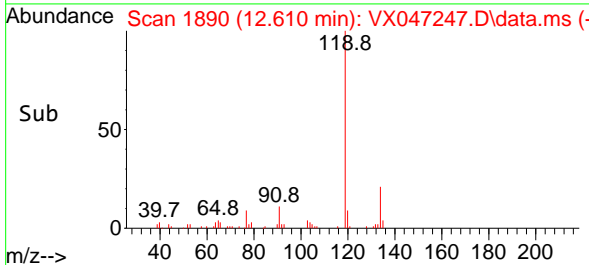
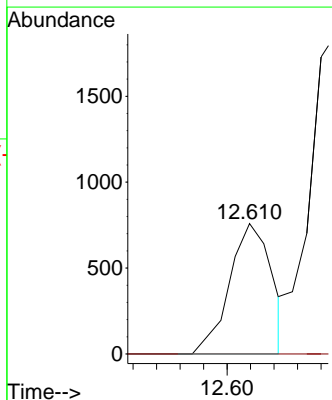
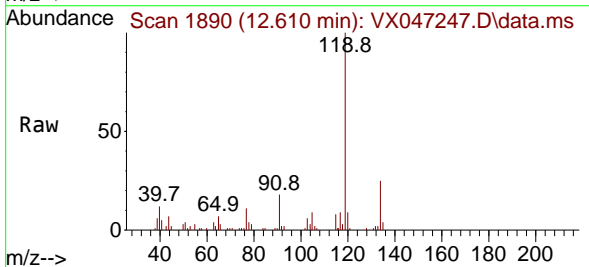


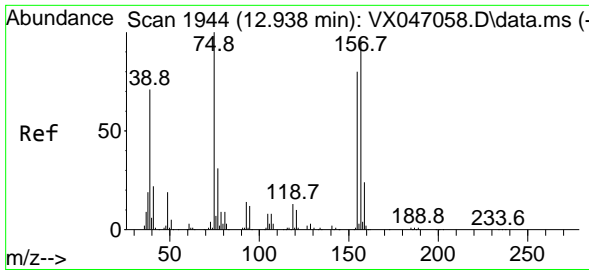
Tgt Ion:119 Resp: 2878
 Ion Ratio Lower Upper
 119 100
 134 29.7 12.8 38.4
 91 20.6 12.4 37.4



#90
 Hexachloroethane
 Concen: 0.394 ug/l
 RT: 12.610 min Scan# 1890
 Delta R.T. 0.074 min
 Lab File: VX047247.D
 Acq: 06 Aug 2025 15:12

Tgt Ion:117 Resp: 949
 Ion Ratio Lower Upper
 117 100
 201 0.0 34.8 104.5#

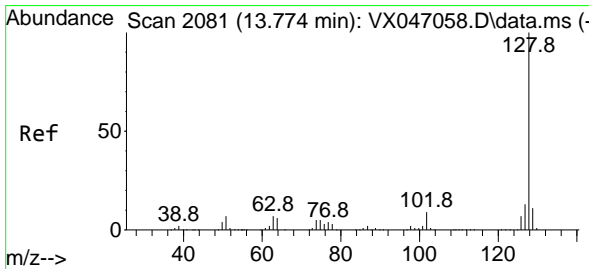
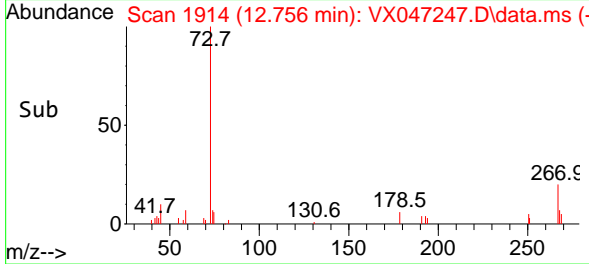
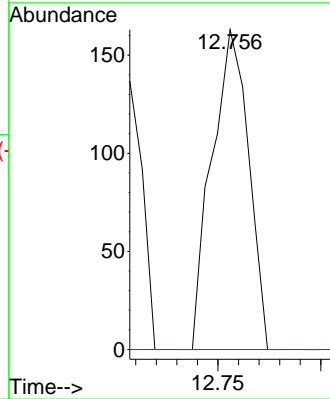
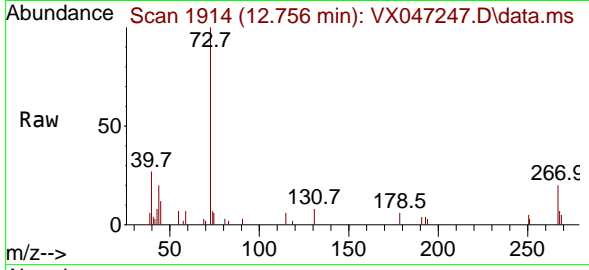




#92
 1,2-Dibromo-3-Chloropropane
 Concen: 0.236 ug/l
 RT: 12.756 min Scan# 1914
 Delta R.T. -0.182 min
 Lab File: VX047247.D
 Acq: 06 Aug 2025 15:12

Instrument : MSVOA_X
 ClientSampleId : TP-1

Tgt Ion: 75 Resp: 203
 Ion Ratio Lower Upper
 75 100
 155 0.0 41.3 124.1#
 157 0.0 52.8 158.3#



#95
 Naphthalene
 Concen: 2.580 ug/l
 RT: 13.774 min Scan# 2081
 Delta R.T. 0.000 min
 Lab File: VX047247.D
 Acq: 06 Aug 2025 15:12

Tgt Ion:128 Resp: 34140
 Ion Ratio Lower Upper
 128 100
 127 12.5 10.1 15.1
 129 11.8 8.6 13.0

