

Data Path : Z:\VOASRV\HPCHEM1\MSVOA X\DATA\VX080720\
 Data File : VX017821.D
 Acq On : 07 Aug 2020 13:31
 Operator : JC/SP
 Sample : L3591-01
 Misc : 25.0mL/MSVOA X/WATER
 ALS Vial : 11 Sample Multiplier: 1

Instrument :
 MSVOA_X
 ClientSampled :

Quant Time: Aug 08 00:12:16 2020
 Quant Method : Z:\VOASRV\HPCHEM1\MSVOA_X\METHOD\SOMXTR080720WMA.M
 Quant Title : TRACE VOA SOM01.0
 QLast Update : Sat Aug 08 00:10:20 2020
 Response via : Initial Calibration

Internal Standards	R.T.	QIon	Response	Conc	Units	Dev(Min)
1) 1,4-Difluorobenzene	6.83	114	317744	5.00	ug/L	0.00
28) Chlorobenzene-d5	10.10	117	308283	5.00	ug/L	0.00
61) 1,4-Dichlorobenzene-d4	12.06	152	145623	5.00	ug/L	0.00

System Monitoring Compounds

4) Vinyl Chloride-d3	1.39	65	109842	5.00	ug/L	0.00
Spiked Amount	5.000	Range	40 - 130	Recovery	=	100.00%
7) Chloroethane-d5	1.69	69	93877	5.39	ug/L	0.00
Spiked Amount	5.000	Range	65 - 130	Recovery	=	107.80%
11) 1,1-Dichloroethene-d2	2.34	63	169893	3.76	ug/L	0.00
Spiked Amount	5.000	Range	60 - 125	Recovery	=	75.20%
20) 2-Butanone-d5	4.54	46	272061	46.66	ug/L	0.00
Spiked Amount	50.000	Range	40 - 130	Recovery	=	93.32%
24) Chloroform-d	5.14	84	198032	4.44	ug/L	0.00
Spiked Amount	5.000	Range	70 - 125	Recovery	=	88.80%
26) 1,2-Dichloroethane-d4	6.03	65	122414	5.00	ug/L	0.00
Spiked Amount	5.000	Range	70 - 130	Recovery	=	100.00%
32) Benzene-d6	6.04	84	426859	5.04	ug/L	0.00
Spiked Amount	5.000	Range	70 - 125	Recovery	=	100.80%
36) 1,2-Dichloropropane-d6	7.37	67	127122	4.86	ug/L	0.00
Spiked Amount	5.000	Range	60 - 140	Recovery	=	97.20%
41) Toluene-d8	8.70	98	384692	4.77	ug/L	0.00
Spiked Amount	5.000	Range	70 - 130	Recovery	=	95.40%
45) trans-1,3-Dichloropropene-	8.99	79	52911	4.67	ug/L	0.00
Spiked Amount	5.000	Range	55 - 130	Recovery	=	93.40%
48) 2-Hexanone-d5	9.43	63	215515	45.77	ug/L	0.00
Spiked Amount	50.000	Range	45 - 130	Recovery	=	91.54%
59) 1,1,2,2-Tetrachloroethane-	11.23	84	89094	4.48	ug/L	0.00
Spiked Amount	5.000	Range	65 - 120	Recovery	=	89.60%
65) 1,2-Dichlorobenzene-d4	12.36	152	147323	5.26	ug/L	0.00
Spiked Amount	5.000	Range	80 - 120	Recovery	=	105.20%

Target Compounds

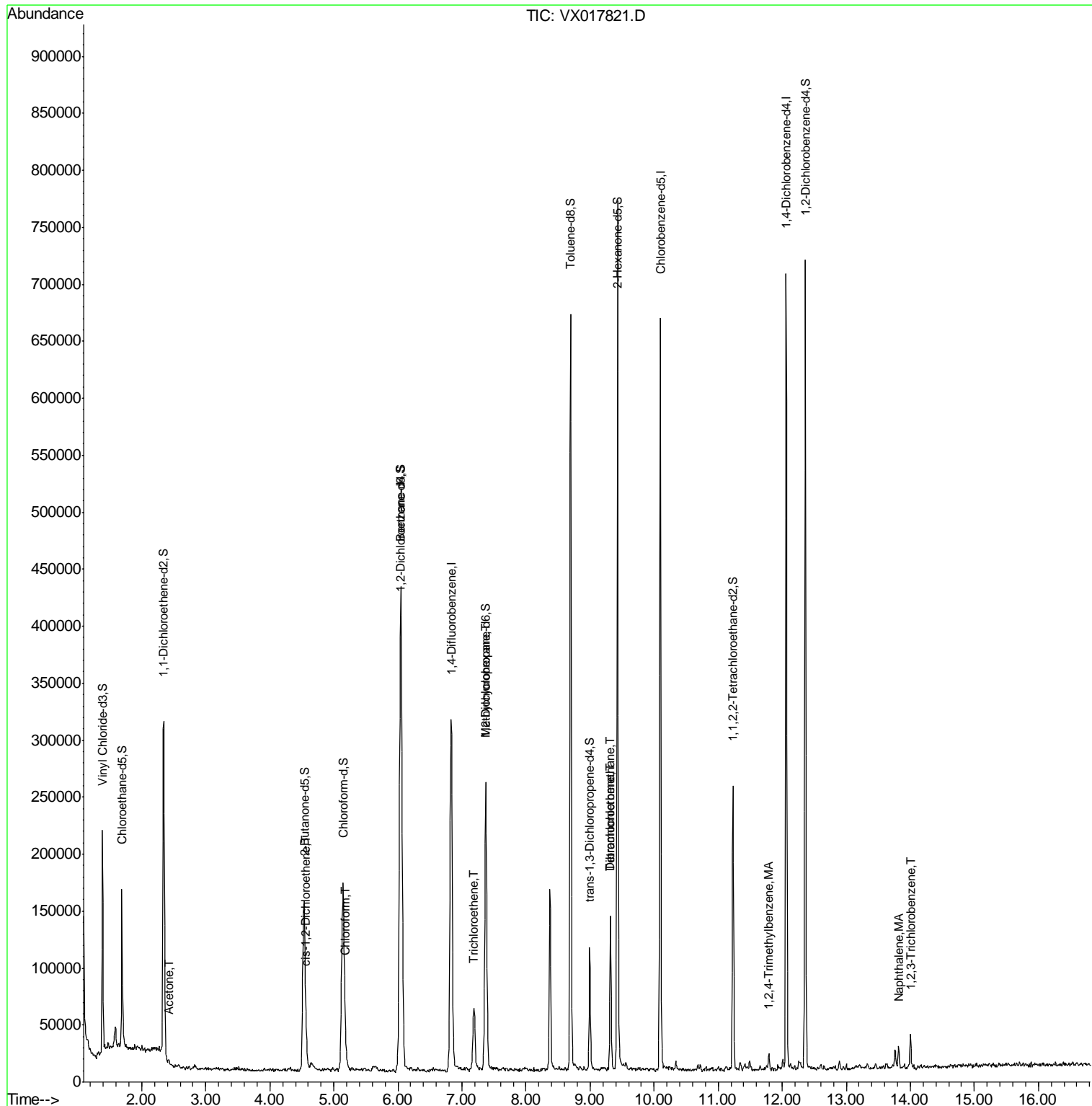
Target Compounds	R.T.	QIon	Response	Conc	Units	Ovalue
13) Acetone	2.42	43	4911	1.153	ug/L	68
22) cis-1,2-Dichloroethene	4.57	96	1351	0.047	ug/L #	47
25) Chloroform	5.18	83	21868	0.412	ug/L	92
34) Trichloroethene	7.19	95	18862	0.592	ug/L	97
35) Methylcyclohexane	7.37	83	32716	0.730	ug/L #	21
44) 1,2,4-Trimethylbenzene	11.79	105	5037	0.046	ug/L	97
49) Tetrachloroethene	9.32	164	26296	1.032	ug/L	92
51) Dibromochloromethane	9.32	129	24583	0.867	ug/L #	14
70) Naphthalene	13.82	128	12750	0.187	ug/L	98
71) 1,2,3-Trichlorobenzene	14.01	180	7769	0.223	ug/L	96

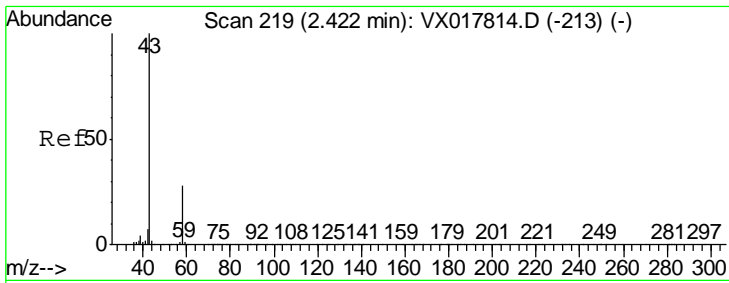
(#) = qualifier out of range (m) = manual integration (+) = signals summed

Data Path : Z:\VOASRV\HPCHEM1\MSVOA X\DATA\VX080720\
 Data File : VX017821.D
 Acq On : 07 Aug 2020 13:31
 Operator : JC/SP
 Sample : L3591-01
 Misc : 25.0mL/MSVOA X/WATER
 ALS Vial : 11 Sample Multiplier: 1

Instrument :
 MSVOA_X
 Client Sampled :

Quant Time: Aug 08 00:12:16 2020
 Quant Method : Z:\VOASRV\HPCHEM1\MSVOA_X\METHOD\SOMXTR080720WMA.M
 Quant Title : TRACE VOA SOM01.0
 QLast Update : Sat Aug 08 00:10:20 2020
 Response via : Initial Calibration

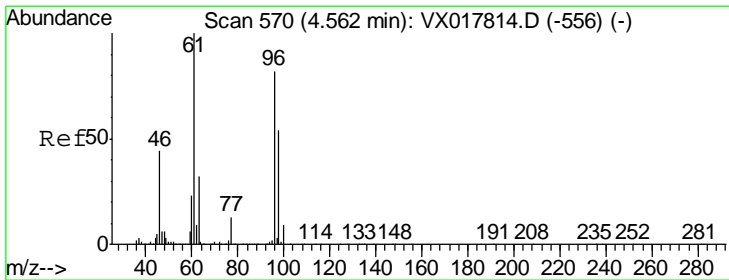
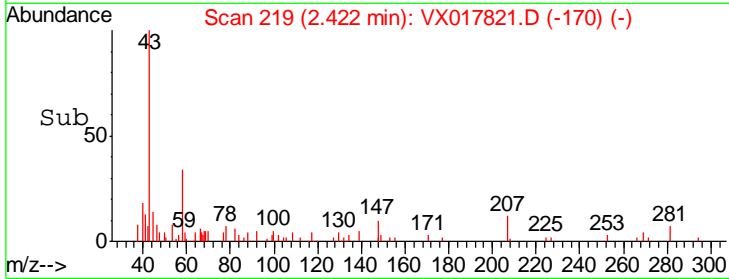
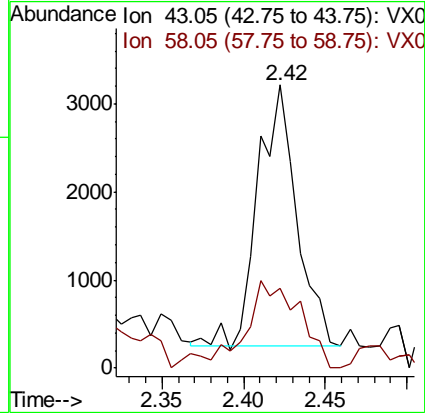
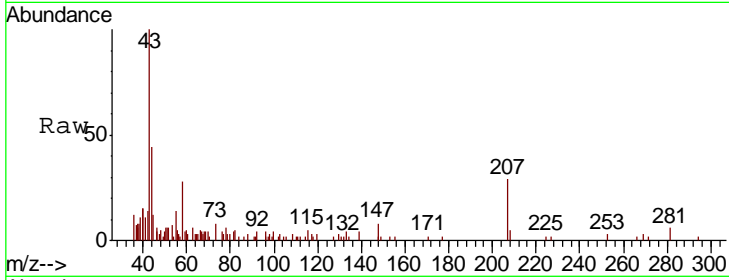




#13
 Acetone
 Concen: 1.153 ug/L
 RT: 2.42 min Scan# 219
 Delta R.T. 0.00 min
 Lab File: VX017821.D
 Acq: 07 Aug 2020 13:31

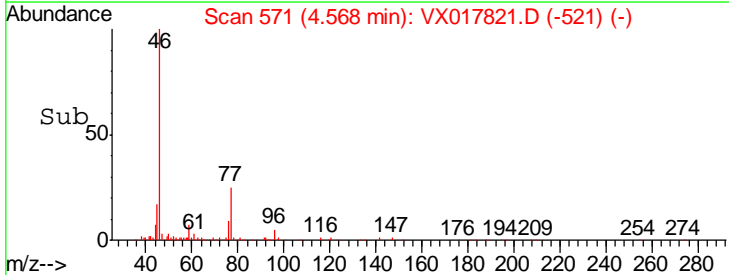
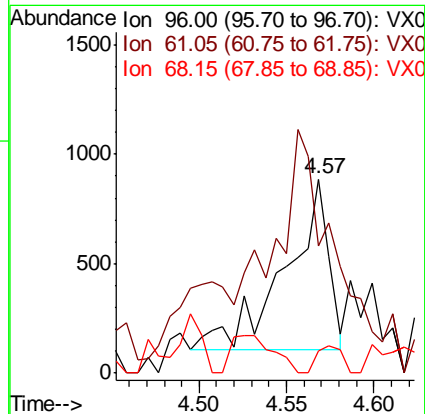
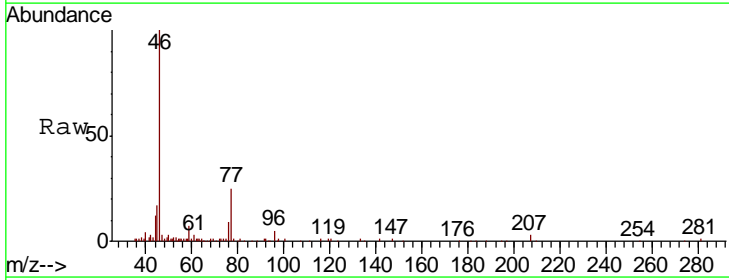
Instrument : MSVOA_X
 ClientSampled :

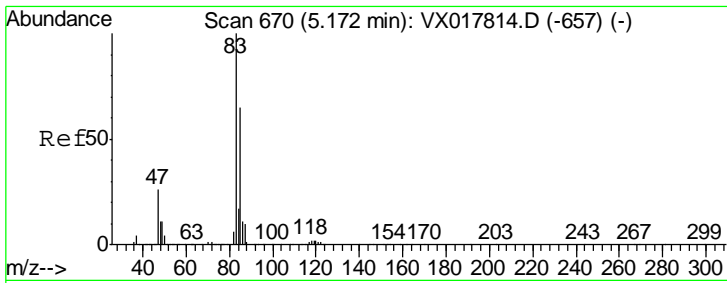
Tgt Ion	Ratio	Lower	Upper
43	100		
58	47.9	0.0	60.8



#22
 cis-1,2-Dichloroethene
 Concen: 0.047 ug/L
 RT: 4.57 min Scan# 571
 Delta R.T. 0.01 min
 Lab File: VX017821.D
 Acq: 07 Aug 2020 13:31

Tgt Ion	Ratio	Lower	Upper
96	100		
61	65.3	88.8	165.0#
68	11.5	0.2	0.4#

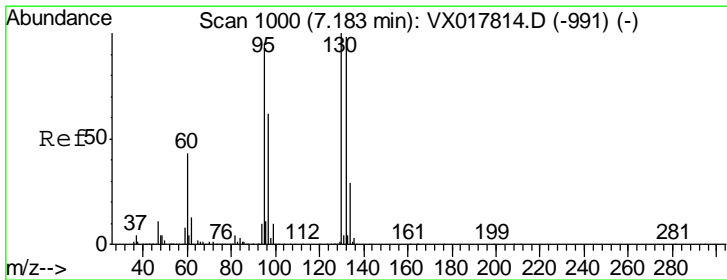
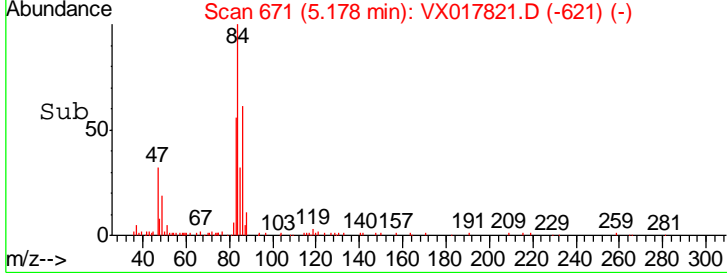
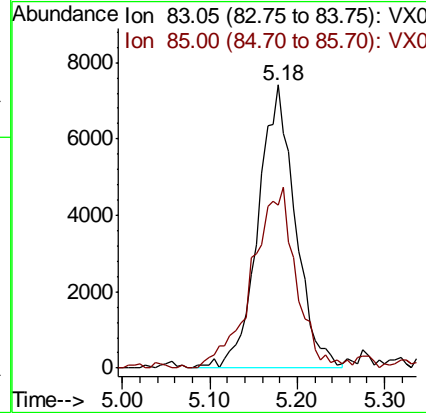
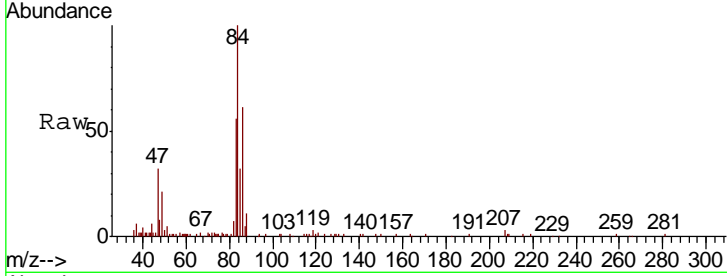




#25
 Chloroform
 Concen: 0.412 ug/L
 RT: 5.18 min Scan# 671
 Delta R.T. 0.01 min
 Lab File: VX017821.D
 Acq: 07 Aug 2020 13:31

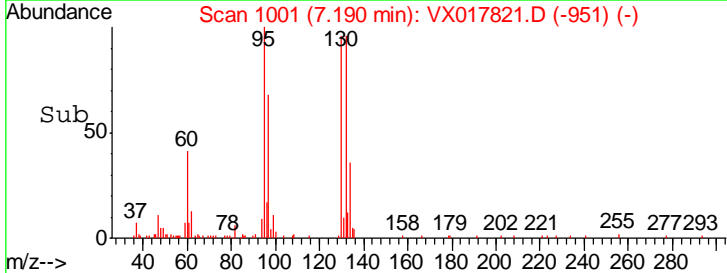
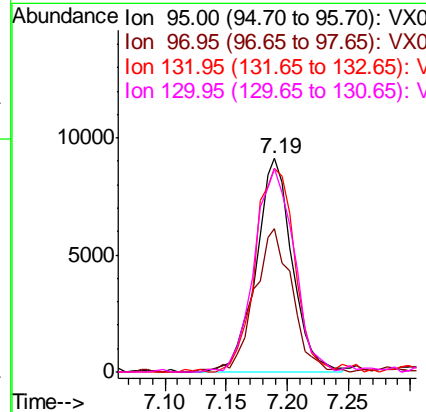
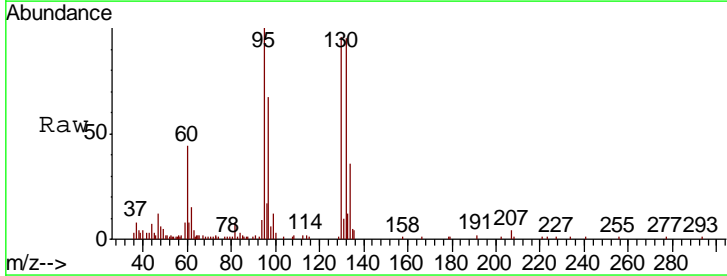
Instrument :
 MSVOA_X
 ClientSampled :

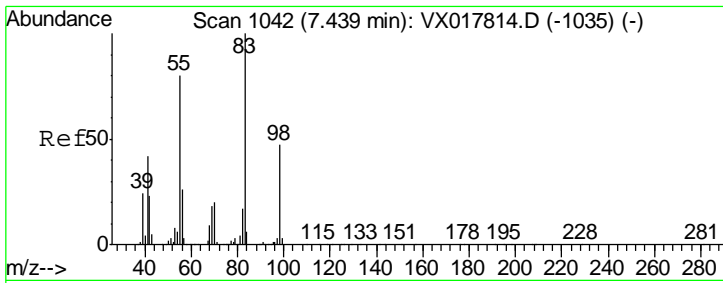
Tgt Ion	Resp	Lower	Upper
83	100		
85	57.6	44.7	83.1



#34
 Trichloroethene
 Concen: 0.592 ug/L
 RT: 7.19 min Scan# 1001
 Delta R.T. 0.01 min
 Lab File: VX017821.D
 Acq: 07 Aug 2020 13:31

Tgt Ion	Resp	Lower	Upper
95	100		
97	67.1	46.1	85.5
132	95.3	66.0	122.6
130	95.5	71.7	133.1

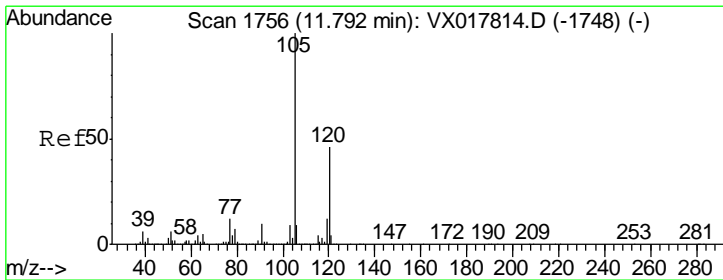
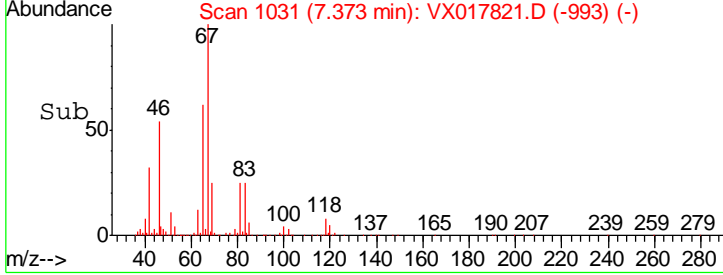
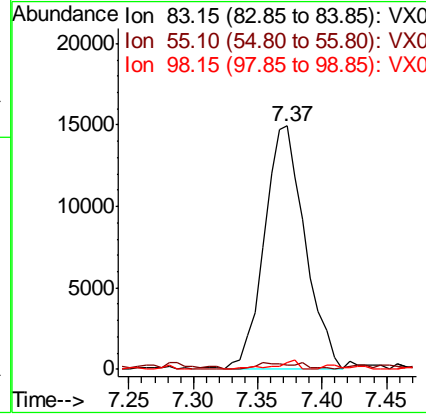
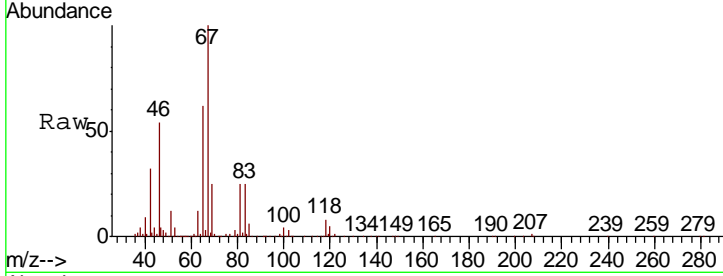




#35
 Methylcyclohexane
 Concen: 0.730 ug/L
 RT: 7.37 min Scan# 1031
 Delta R.T. -0.07 min
 Lab File: VX017821.D
 Acq: 07 Aug 2020 13:31

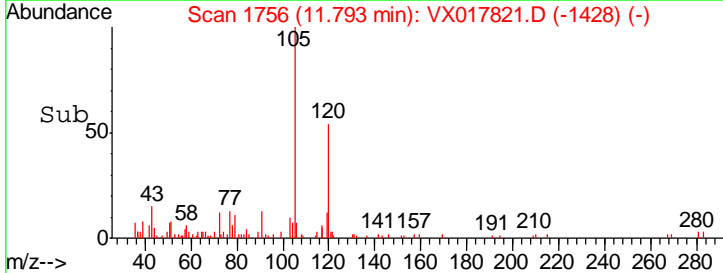
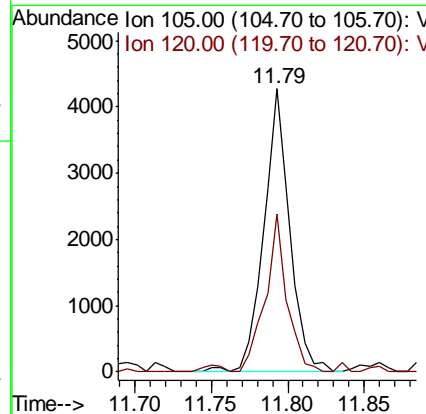
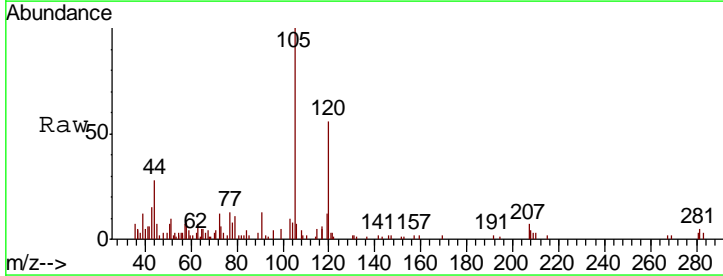
Instrument :
 MSVOA_X
 ClientSampled :

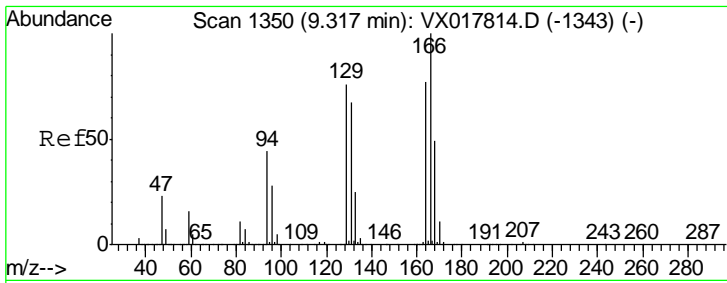
Tgt Ion	Resp	Lower	Upper
83	32716		
55	2.9	62.4	93.6#
98	2.2	38.0	57.0#



#44
 1,2,4-Trimethylbenzene
 Concen: 0.046 ug/L
 RT: 11.79 min Scan# 1756
 Delta R.T. 0.00 min
 Lab File: VX017821.D
 Acq: 07 Aug 2020 13:31

Tgt Ion	Resp	Lower	Upper
105	5037		
120	46.9	35.8	53.8

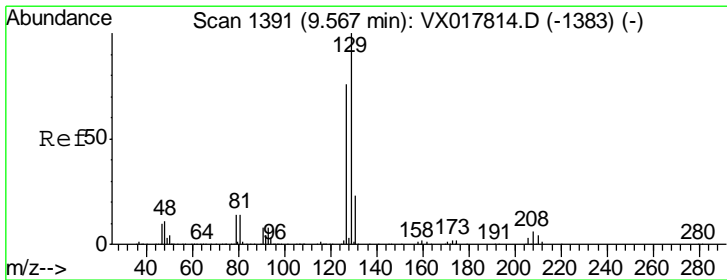
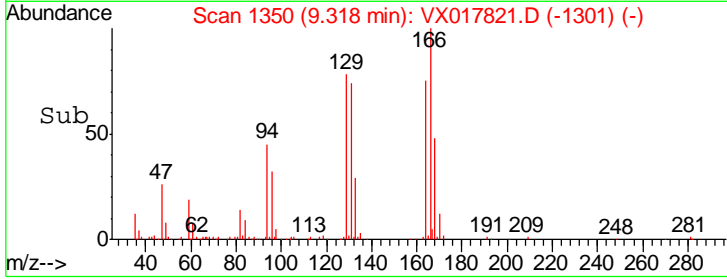
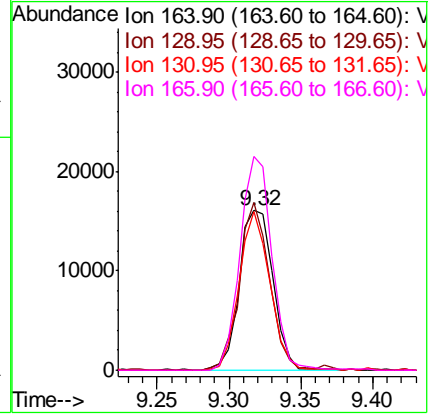
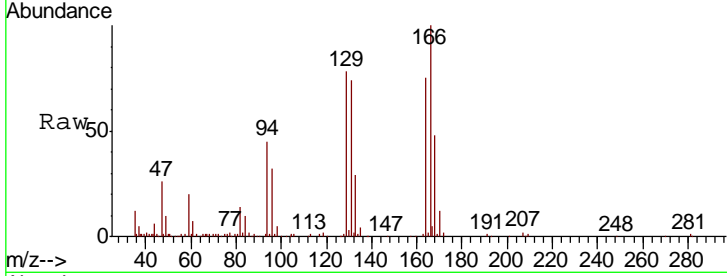




#49
 Tetrachloroethene
 Concen: 1.032 ug/L
 RT: 9.32 min Scan# 1350
 Delta R.T. 0.00 min
 Lab File: VX017821.D
 Acq: 07 Aug 2020 13:31

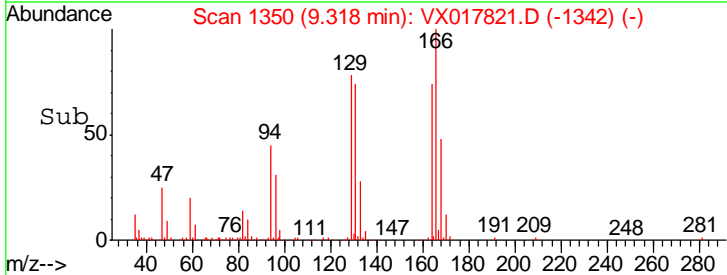
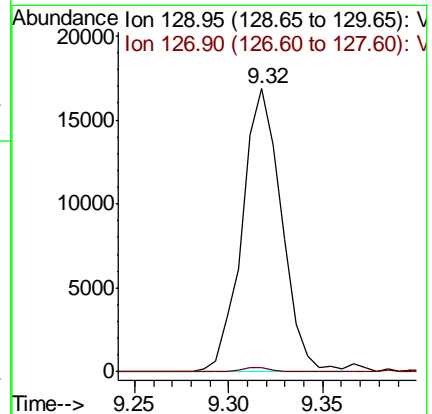
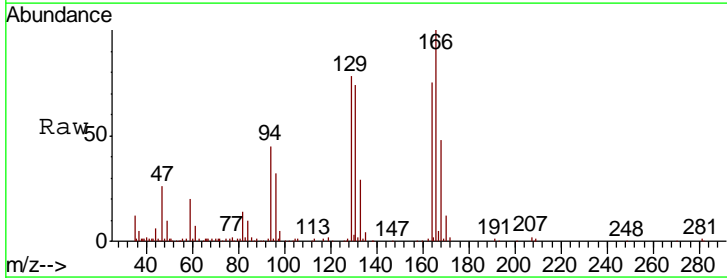
Instrument :
 MSVOA_X
 ClientSampled :

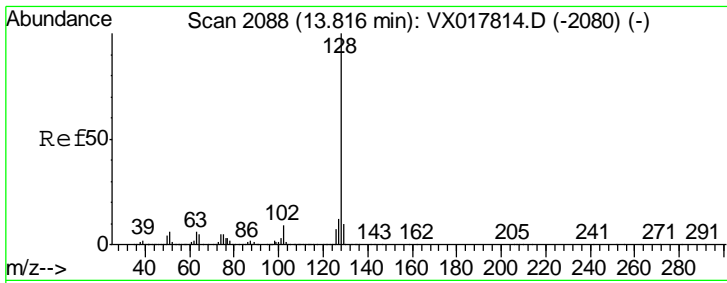
Tgt Ion	Resp	Lower	Upper
164	100		
129	104.8	67.4	125.2
131	99.1	65.3	121.3
166	133.6	87.2	161.9



#51
 Dibromochloromethane
 Concen: 0.867 ug/L
 RT: 9.32 min Scan# 1350
 Delta R.T. -0.25 min
 Lab File: VX017821.D
 Acq: 07 Aug 2020 13:31

Tgt Ion	Resp	Lower	Upper
129	100		
127	1.5	52.5	97.5#

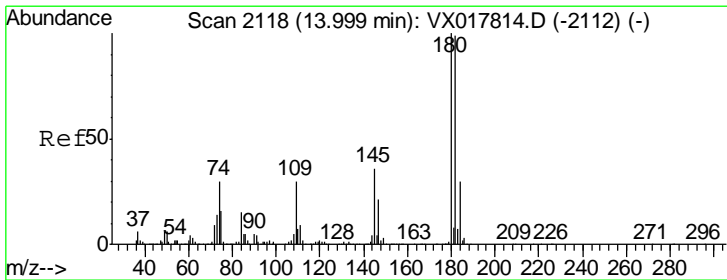
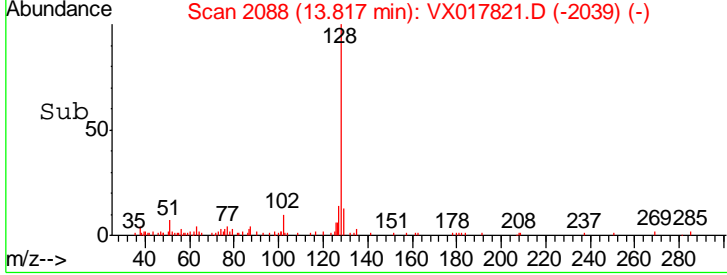
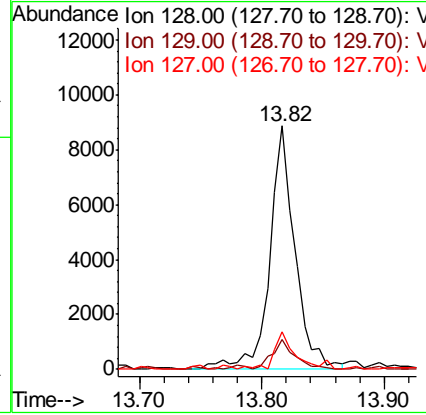
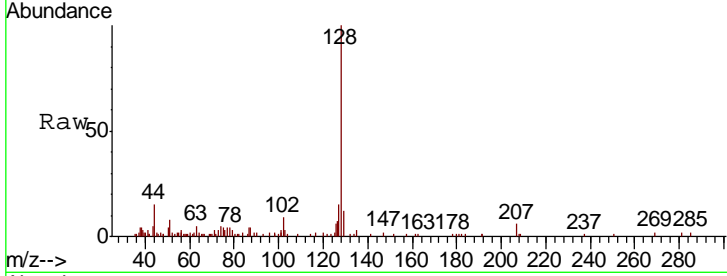




#70
 Naphthalene
 Concen: 0.187 ug/L
 RT: 13.82 min Scan# 2088
 Delta R.T. 0.00 min
 Lab File: VX017821.D
 Acq: 07 Aug 2020 13:31

Instrument : MSVOA_X
 ClientSampled :

Tgt Ion	Resp	Lower	Upper
128	12750		
129	11.1	8.4	12.6
127	13.0	11.0	16.4



#71
 1,2,3-Trichlorobenzene
 Concen: 0.223 ug/L
 RT: 14.01 min Scan# 2119
 Delta R.T. 0.01 min
 Lab File: VX017821.D
 Acq: 07 Aug 2020 13:31

Tgt Ion	Resp	Lower	Upper
180	7769		
182	95.8	75.4	113.0
145	27.8	27.4	41.0

