

Data Path : Z:\VOASRV\HPCHEM1\MSVOA X\DATA\VX080819\
 Data File : VX011393.D
 Acq On : 08 Aug 2019 17:07
 Operator : JC/SP
 Sample : K4251-01 20X
 Misc : 5.0mL/MSVOA X/WATER
 ALS Vial : 16 Sample Multiplier: 1

Instrument :
 MSVOA_X
 ClientSampleId :
 EP1-MW-J-0819

Integration Parameters: RTEINT.P

Integrator: RTE
 Smoothing : ON Filtering: 5
 Sampling : 1 Min Area: 3 % of largest Peak
 Start Thrs: 0.2 Max Peaks: 100
 Stop Thrs : 0 Peak Location: TOP

If leading or trailing edge < 100 prefer < Baseline drop else tangent >
 Peak separation: 5

Method : Z:\VOASRV\HPCHEM1\MSVOA_X\METHOD\82X080119W.M
 Title : SW846 8260

Signal : TIC

peak #	R.T. min	first scan	max scan	last scan	PK TY	peak height	corr. area	corr. % max.	% of total
1	5.488	699	711	725	rBV	99912	288526	10.25%	2.197%
2	5.647	725	737	749	rVB	157945	439860	15.63%	3.350%
3	6.049	792	803	814	rBV2	98076	255515	9.08%	1.946%
4	6.848	923	934	949	rBV	247339	583299	20.73%	4.442%
5	8.707	1233	1239	1250	rVB	534913	818197	29.07%	6.231%
6	10.109	1464	1469	1475	rBV	538860	708796	25.18%	5.398%
7	10.250	1485	1492	1497	rBV	83686	122442	4.35%	0.932%
8	10.359	1499	1510	1515	rVV2	102325	191113	6.79%	1.455%
9	10.640	1544	1556	1563	rBV3	41417	94833	3.37%	0.722%
10	10.835	1579	1588	1592	rBV2	84118	133635	4.75%	1.018%
11	10.908	1592	1600	1604	rBV3	78456	130831	4.65%	0.996%
12	10.945	1604	1606	1611	rVB	35132	40584	1.44%	0.309%
13	11.012	1611	1617	1621	rBV	130732	169543	6.02%	1.291%
14	11.079	1625	1628	1632	rVV3	23027	33159	1.18%	0.253%
15	11.134	1632	1637	1642	rVB	513621	635576	22.58%	4.840%
16	11.274	1652	1660	1668	rVB3	54536	99521	3.54%	0.758%
17	11.353	1668	1673	1677	rBV	221455	281245	9.99%	2.142%
18	11.451	1682	1689	1692	rVV	257845	463743	16.48%	3.532%
19	11.499	1692	1697	1707	rVB	315921	492520	17.50%	3.751%
20	11.676	1719	1726	1731	rBV5	27483	61693	2.19%	0.470%
21	11.768	1737	1741	1743	rBV	80693	103504	3.68%	0.788%
22	11.804	1743	1747	1757	rVB	2338487	2814408	100.00%	21.433%
23	11.914	1762	1765	1767	rVV	33314	43859	1.56%	0.334%
24	11.944	1767	1770	1774	rVB	84761	107532	3.82%	0.819%
25	11.993	1774	1778	1780	rBV	41962	51818	1.84%	0.395%
26	12.024	1780	1783	1786	rVV	46356	55416	1.97%	0.422%
27	12.072	1786	1791	1797	rVB2	610568	815592	28.98%	6.211%
28	12.140	1797	1802	1808	rVB	738099	905776	32.18%	6.898%
29	12.225	1813	1816	1823	rVB	33995	53480	1.90%	0.407%
30	12.298	1823	1828	1835	rBV	263557	401438	14.26%	3.057%
31	12.365	1835	1839	1846	rVB3	180116	307171	10.91%	2.339%
32	12.457	1846	1854	1861	rBV2	43474	78324	2.78%	0.596%
33	12.518	1861	1864	1869	rVB3	24692	38110	1.35%	0.290%
34	12.585	1870	1875	1877	rBV	116430	164698	5.85%	1.254%

Data Path : Z:\VOASRV\HPCHEM1\MSVOA X\DATA\VX080819\
Data File : VX011393.D
Acq On : 08 Aug 2019 17:07
Operator : JC/SP
Sample : K4251-01 20X
Misc : 5.0mL/MSVOA X/WATER
ALS Vial : 16 Sample Multiplier: 1

Instrument :
MSVOA_X
ClientSampleId :
EP1-MW-J-0819

Integration Parameters: RTEINT.P
Integrator: RTE
Smoothing : ON Filtering: 5
Sampling : 1 Min Area: 3 % of largest Peak
Start Thrs: 0.2 Max Peaks: 100
Stop Thrs : 0 Peak Location: TOP

If leading or trailing edge < 100 prefer < Baseline drop else tangent >
Peak separation: 5

Method : Z:\VOASRV\HPCHEM1\MSVOA_X\METHOD\82X080119W.M
Title : SW846 8260

35	12.609	1877	1879	1884	rVV	125737	134260	4.77%	1.022%
36	12.664	1884	1888	1891	rVV	156649	181155	6.44%	1.380%
37	12.700	1891	1894	1898	rVV	43280	54072	1.92%	0.412%
38	12.755	1898	1903	1910	rVB4	106362	199964	7.11%	1.523%
39	12.896	1920	1926	1931	rVB2	58033	94570	3.36%	0.720%
40	12.975	1936	1939	1942	rVV	64156	76511	2.72%	0.583%
41	13.017	1942	1946	1952	rVB	111340	140852	5.00%	1.073%
42	13.341	1995	1999	2005	rVB2	115149	166190	5.90%	1.266%
43	13.475	2017	2021	2028	rVB2	29999	40864	1.45%	0.311%
44	13.719	2053	2061	2069	rVB4	11005	28488	1.01%	0.217%
45	13.834	2076	2080	2087	rVB	18985	28760	1.02%	0.219%

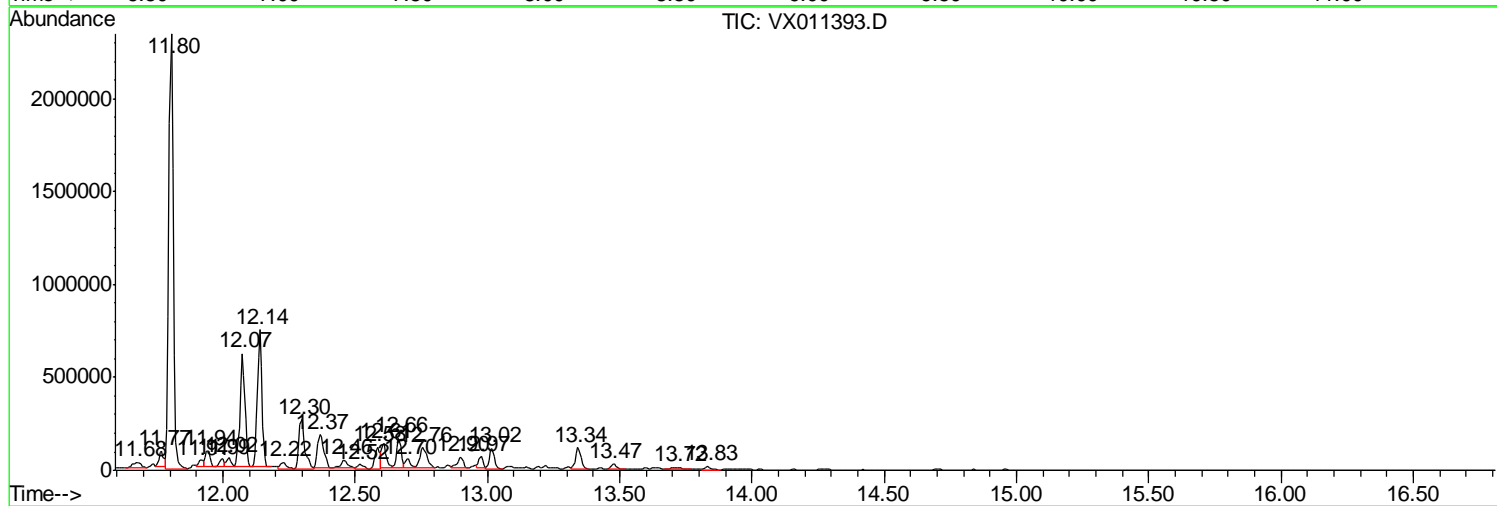
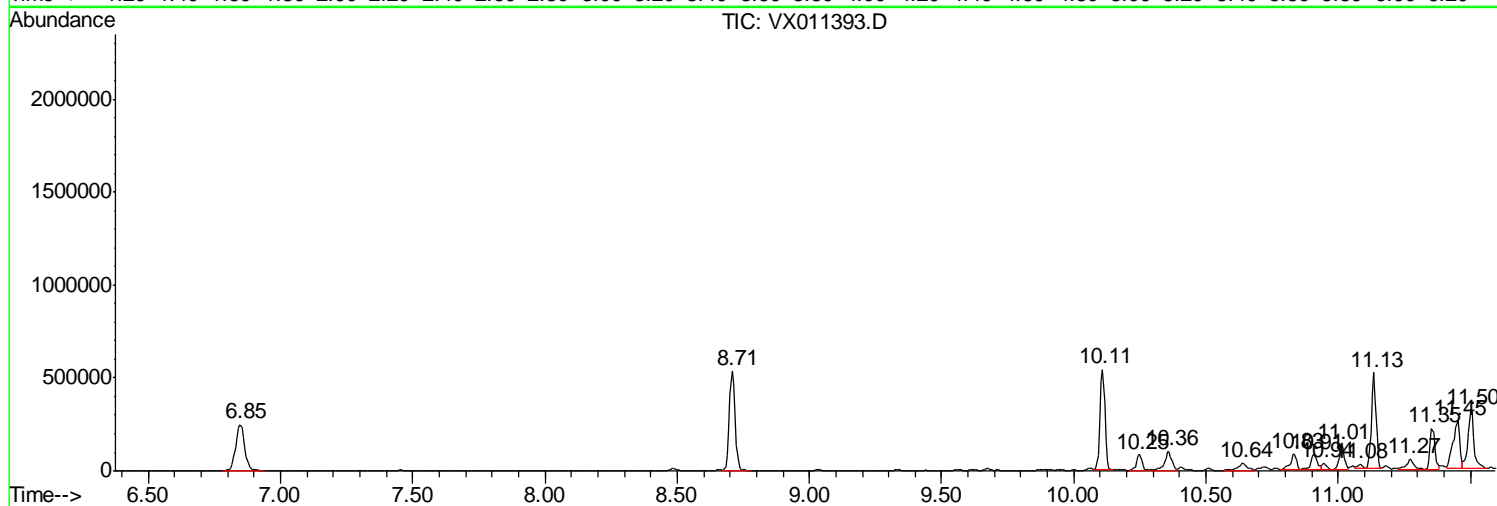
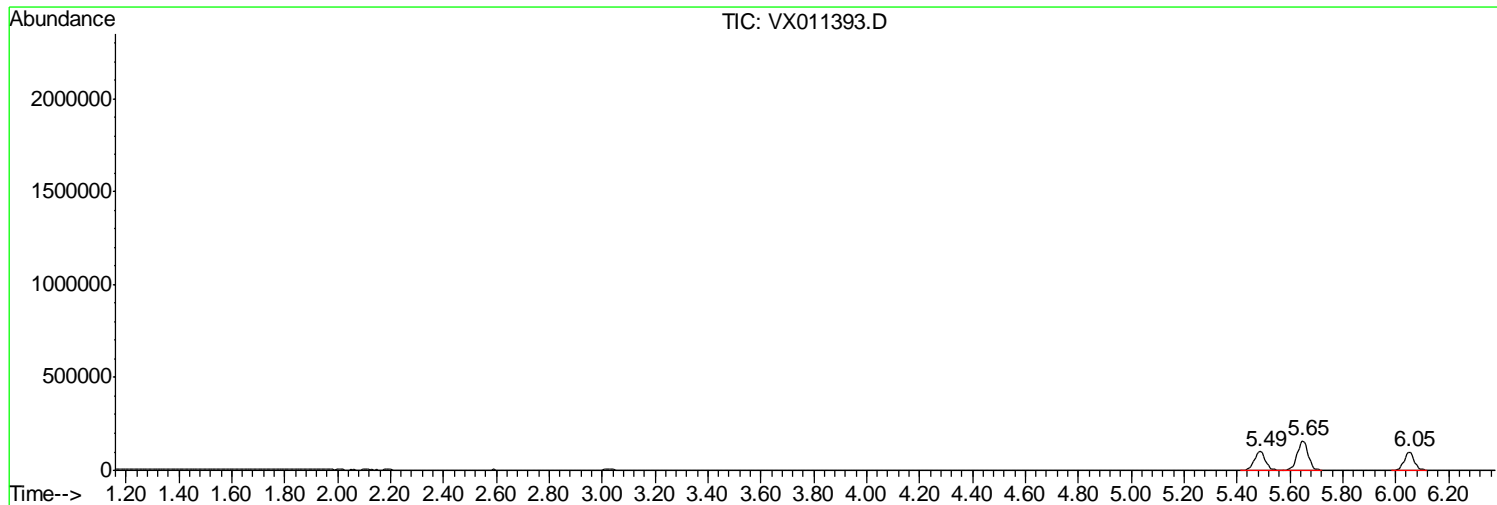
Sum of corrected areas: 13131443

Data Path : Z:\VOASRV\HPCHEM1\MSVOA X\DATA\VX080819\
 Data File : VX011393.D
 Acq On : 08 Aug 2019 17:07
 Operator : JC/SP
 Sample : K4251-01 20X
 Misc : 5.0mL/MSVOA X/WATER
 ALS Vial : 16 Sample Multiplier: 1

Instrument :
 MSVOA_X
ClientSampled :
 EP1-MW-J-0819

Quant Method : Z:\VOASRV\HPCHEM1\MSVOA_X\METHOD\82X080119W.M
 Quant Title : SW846 8260

TIC Library : C:\DATABASE\NIST11.L
 TIC Integration Parameters: LSCINT.P



Data Path : Z:\VOASRV\HPCHEM1\MSVOA X\DATA\VX080819\
 Data File : VX011393.D
 Acq On : 08 Aug 2019 17:07
 Operator : JC/SP
 Sample : K4251-01 20X
 Misc : 5.0mL/MSVOA X/WATER
 ALS Vial : 16 Sample Multiplier: 1

Instrument :
 MSVOA_X
 ClientSampleId :
 EP1-MW-J-0819

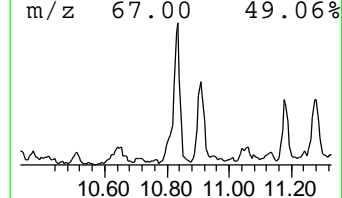
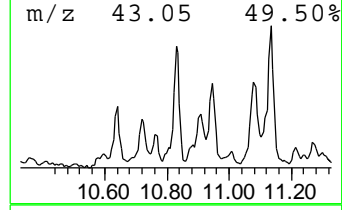
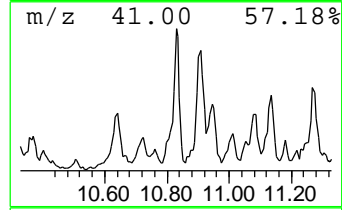
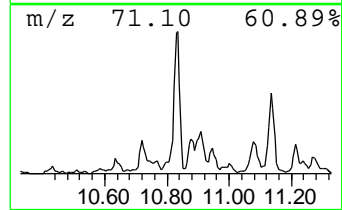
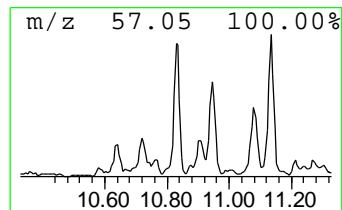
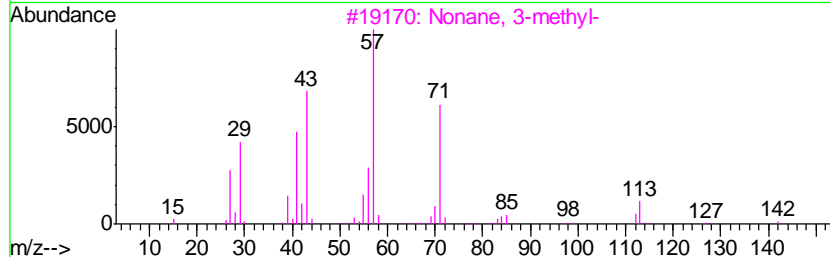
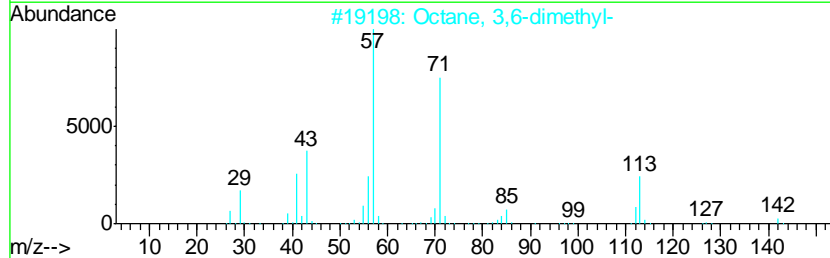
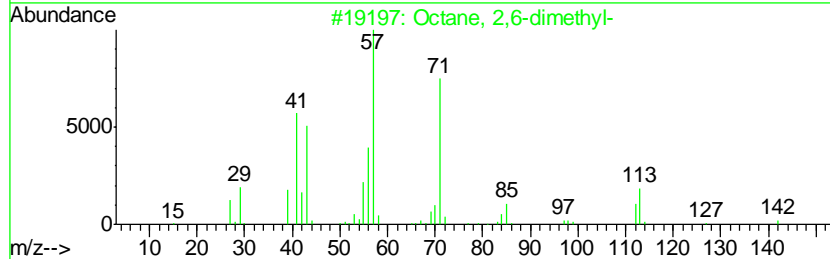
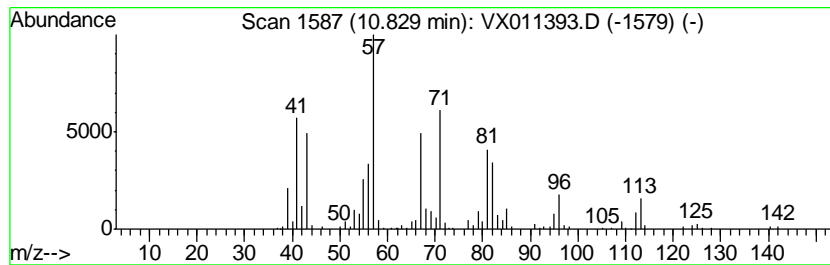
Quant Method : Z:\VOASRV\HPCHEM1\MSVOA_X\METHOD\82X080119W.M
 Quant Title : SW846 8260

TIC Library : C:\DATABASE\NIST11.L
 TIC Integration Parameters: LSCINT.P

 Peak Number 1 Octane, 2,6-dimethyl- Concentration Rank 7

R.T.	EstConc	Area	Relative to ISTD	R.T.
10.83	9.43 ug/l	133635	Chlorobenzene-d5	10.11

Hit#	of	Tentative ID	MW	MolForm	CAS#	Qual
1	5	Octane, 2,6-dimethyl-	142	C10H22	002051-30-1	91
2		Octane, 3,6-dimethyl-	142	C10H22	015869-94-0	55
3		Nonane, 3-methyl-	142	C10H22	005911-04-6	49
4		Sulfurous acid, 2-ethylhexyl hex...	418	C24H50O3S	1000309-19-9	43
5		Undecane, 6,6-dimethyl-	184	C13H28	017312-76-4	38



Data Path : Z:\VOASRV\HPCHEM1\MSVOA X\DATA\VX080819\
 Data File : VX011393.D
 Acq On : 08 Aug 2019 17:07
 Operator : JC/SP
 Sample : K4251-01 20X
 Misc : 5.0mL/MSVOA X/WATER
 ALS Vial : 16 Sample Multiplier: 1

Instrument :
 MSVOA_X
 ClientSampleId :
 EP1-MW-J-0819

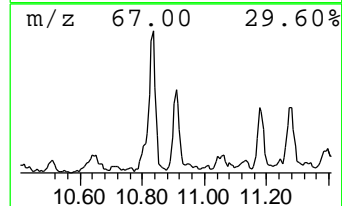
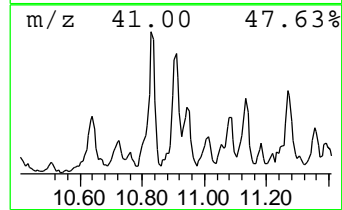
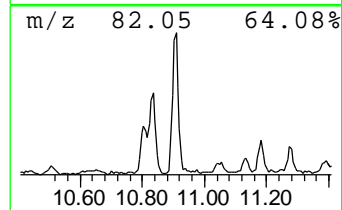
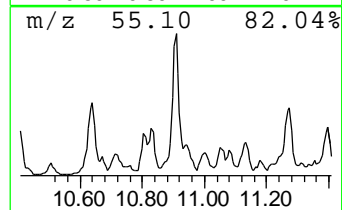
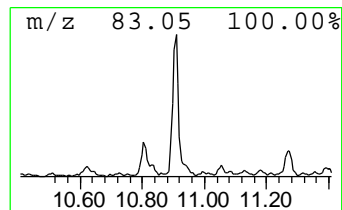
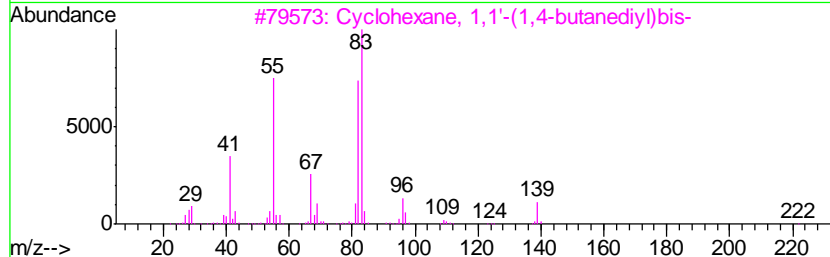
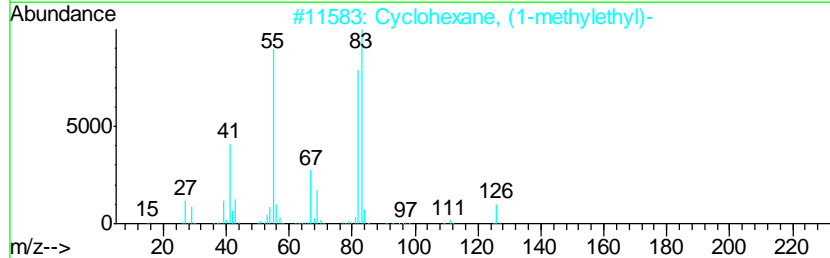
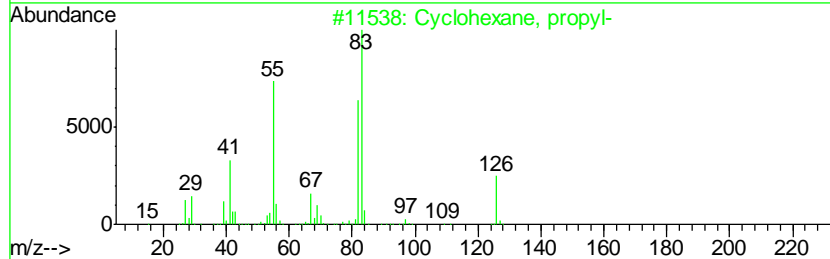
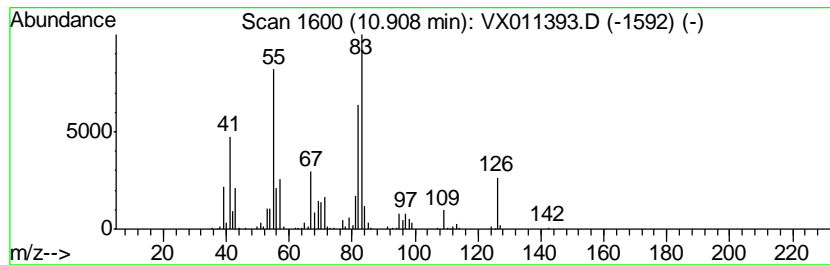
Quant Method : Z:\VOASRV\HPCHEM1\MSVOA_X\METHOD\82X080119W.M
 Quant Title : SW846 8260

TIC Library : C:\DATABASE\NIST11.L
 TIC Integration Parameters: LSCINT.P

 Peak Number 2 Cyclohexane, propyl- Concentration Rank 8

R.T.	EstConc	Area	Relative to ISTD	R.T.
10.91	9.23 ug/l	130831	Chlorobenzene-d5	10.11

Hit#	of	Tentative ID	MW	MolForm	CAS#	Qual
1	5	Cyclohexane, propyl-	126	C9H18	001678-92-8	74
2		Cyclohexane, (1-methylethyl)-	126	C9H18	000696-29-7	59
3		Cyclohexane, 1,1'-(1,4-butanediyl)...	222	C16H30	006165-44-2	59
4		Acetic acid, mercapto-, cyclohex...	174	C8H14O2S	016849-98-2	53
5		Cyclohexane, ethyl-	112	C8H16	001678-91-7	53



Data Path : Z:\VOASRV\HPCHEM1\MSVOA X\DATA\VX080819\
 Data File : VX011393.D
 Acq On : 08 Aug 2019 17:07
 Operator : JC/SP
 Sample : K4251-01 20X
 Misc : 5.0mL/MSVOA X/WATER
 ALS Vial : 16 Sample Multiplier: 1

Instrument :
 MSVOA_X
 ClientSampled :
 EP1-MW-J-0819

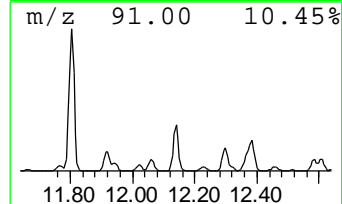
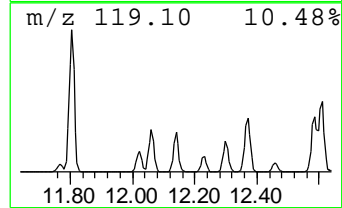
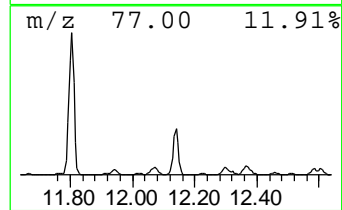
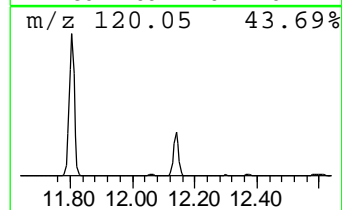
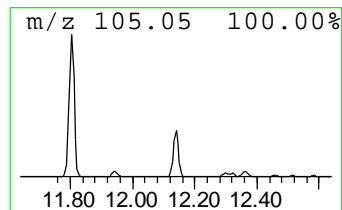
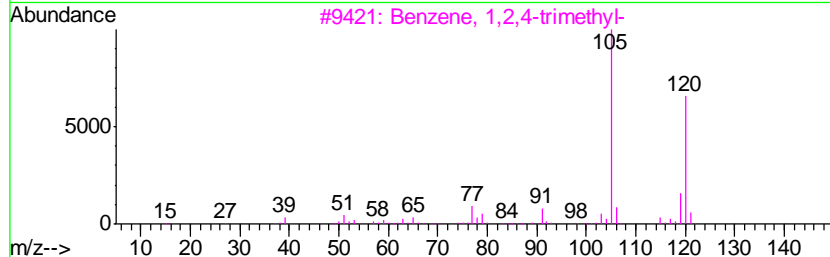
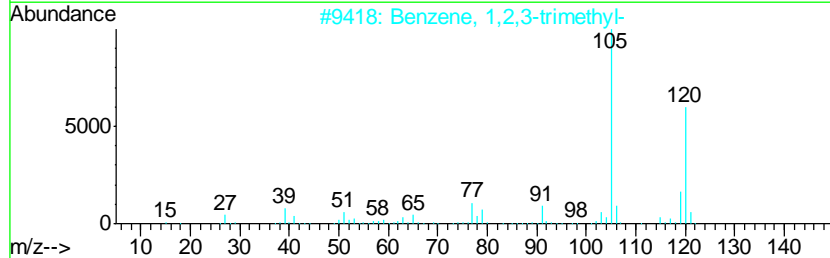
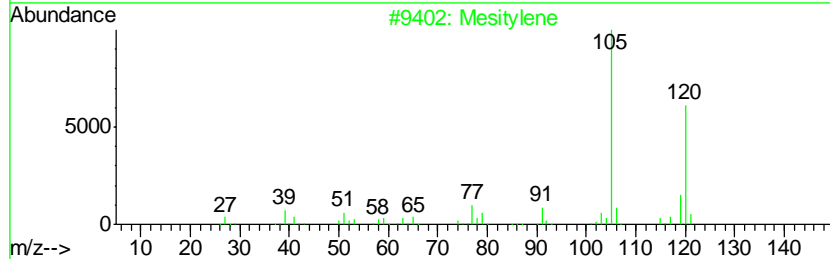
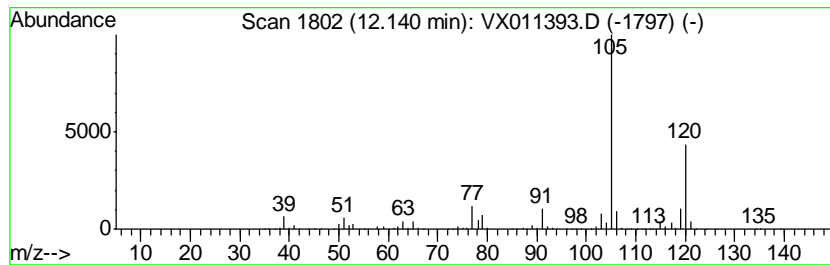
Quant Method : Z:\VOASRV\HPCHEM1\MSVOA_X\METHOD\82X080119W.M
 Quant Title : SW846 8260

TIC Library : C:\DATABASE\NIST11.L
 TIC Integration Parameters: LSCINT.P

 Peak Number 3 Mesitylene Concentration Rank 1

R.T.	EstConc	Area	Relative to ISTD	R.T.
12.14	55.53 ug/l	905776	1,4-Dichlorobenzene-d4	12.07

Hit#	of	Tentative ID	MW	MolForm	CAS#	Qual
1	5	Mesitylene	120	C9H12	000108-67-8	97
2		Benzene, 1,2,3-trimethyl-	120	C9H12	000526-73-8	95
3		Benzene, 1,2,4-trimethyl-	120	C9H12	000095-63-6	91
4		Benzene, 1-ethyl-3-methyl-	120	C9H12	000620-14-4	91
5		Benzene, 1-ethyl-2-methyl-	120	C9H12	000611-14-3	90



Data Path : Z:\VOASRV\HPCHEM1\MSVOA X\DATA\VX080819\
 Data File : VX011393.D
 Acq On : 08 Aug 2019 17:07
 Operator : JC/SP
 Sample : K4251-01 20X
 Misc : 5.0mL/MSVOA X/WATER
 ALS Vial : 16 Sample Multiplier: 1

Instrument :
 MSVOA_X
 ClientSampled :
 EP1-MW-J-0819

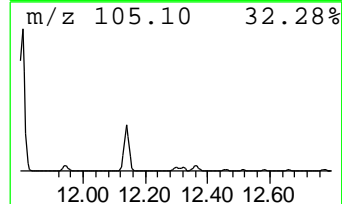
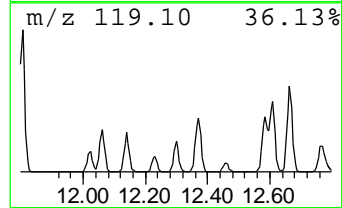
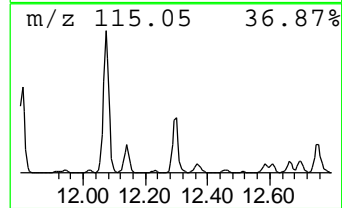
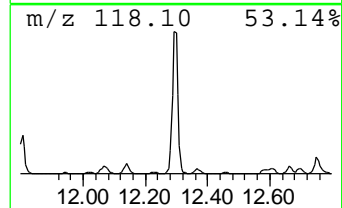
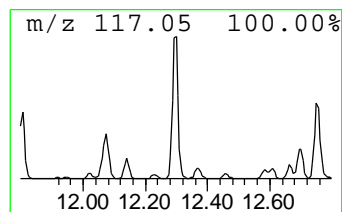
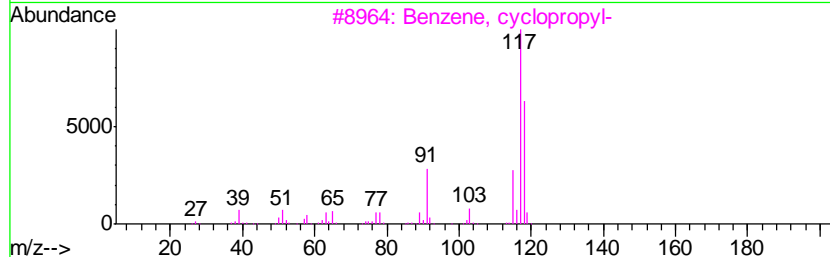
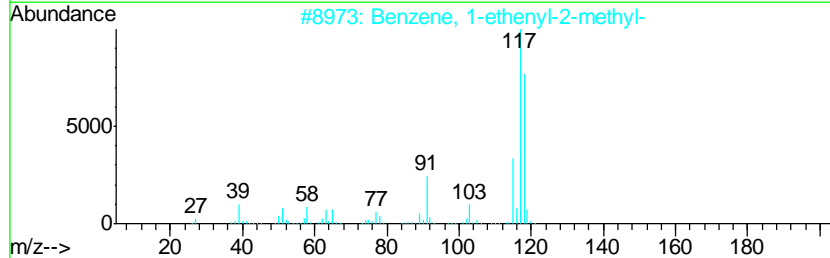
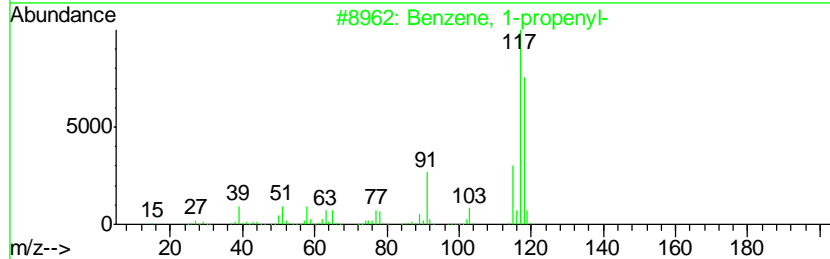
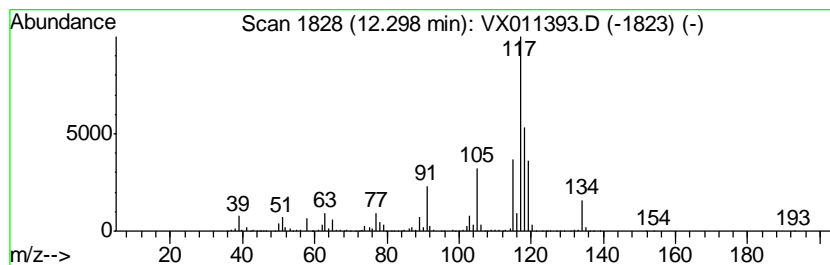
Quant Method : Z:\VOASRV\HPCHEM1\MSVOA_X\METHOD\82X080119W.M
 Quant Title : SW846 8260

TIC Library : C:\DATABASE\NIST11.L
 TIC Integration Parameters: LSCINT.P

 Peak Number 4 Benzene, 1-propenyl- Concentration Rank 2

R.T.	EstConc	Area	Relative to ISTD	R.T.
12.30	24.61 ug/l	401438	1,4-Dichlorobenzene-d4	12.07

Hit#	of	Tentative ID	MW	MolForm	CAS#	Qual
1	5	Benzene, 1-propenyl-	118	C9H10	000637-50-3	90
2		Benzene, 1-ethenyl-2-methyl-	118	C9H10	000611-15-4	90
3		Benzene, cyclopropyl-	118	C9H10	000873-49-4	90
4		Benzene, 2-propenyl-	118	C9H10	000300-57-2	78
5		Indane	118	C9H10	000496-11-7	60



Data Path : Z:\VOASRV\HPCHEM1\MSVOA X\DATA\VX080819\
 Data File : VX011393.D
 Acq On : 08 Aug 2019 17:07
 Operator : JC/SP
 Sample : K4251-01 20X
 Misc : 5.0mL/MSVOA X/WATER
 ALS Vial : 16 Sample Multiplier: 1

Instrument :
 MSVOA_X
 ClientSampled :
 EP1-MW-J-0819

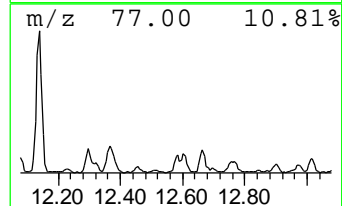
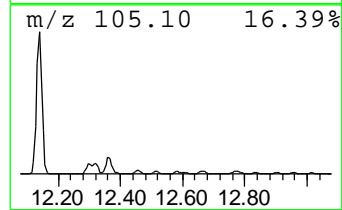
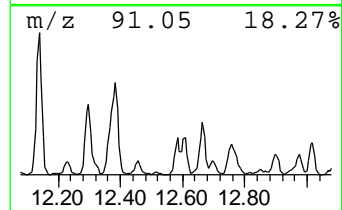
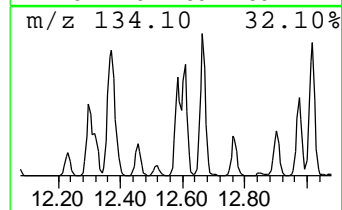
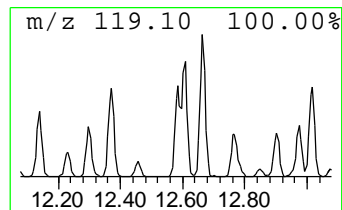
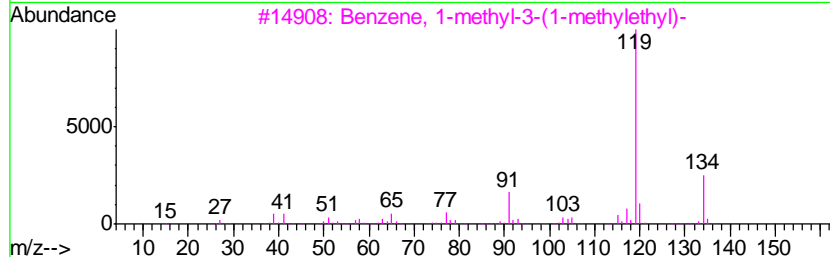
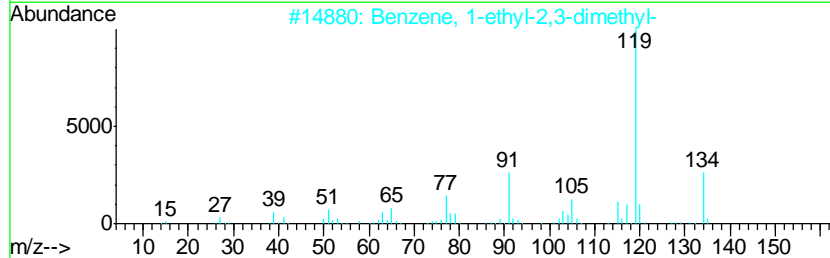
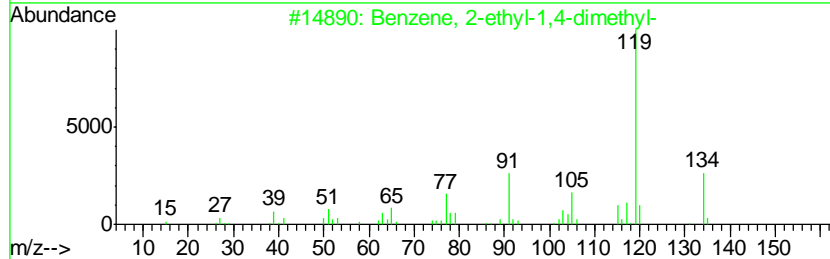
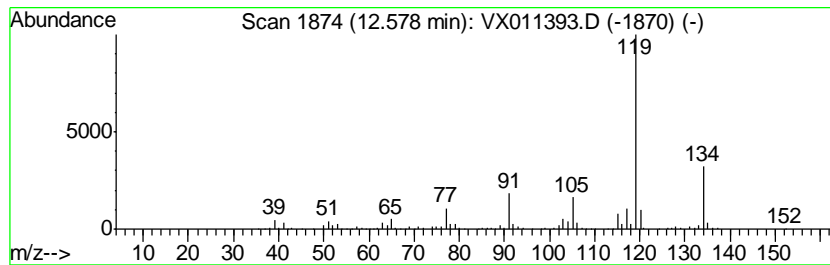
Quant Method : Z:\VOASRV\HPCHEM1\MSVOA_X\METHOD\82X080119W.M
 Quant Title : SW846 8260

TIC Library : C:\DATABASE\NIST11.L
 TIC Integration Parameters: LSCINT.P

 Peak Number 5 Benzene, 2-ethyl-1,4-dimethyl- Concentration Rank 6

R.T.	EstConc	Area	Relative to ISTD	R.T.
12.58	10.10 ug/l	164698	1,4-Dichlorobenzene-d4	12.07

Hit#	of	Tentative ID	MW	MolForm	CAS#	Qual
1	5	Benzene, 2-ethyl-1,4-dimethyl-	134	C10H14	001758-88-9	96
2		Benzene, 1-ethyl-2,3-dimethyl-	134	C10H14	000933-98-2	95
3		Benzene, 1-methyl-3-(1-methyleth...	134	C10H14	000535-77-3	94
4		o-Cymene	134	C10H14	000527-84-4	94
5		Benzene, 4-ethyl-1,2-dimethyl-	134	C10H14	000934-80-5	94



Data Path : Z:\VOASRV\HPCHEM1\MSVOA X\DATA\VX080819\
 Data File : VX011393.D
 Acq On : 08 Aug 2019 17:07
 Operator : JC/SP
 Sample : K4251-01 20X
 Misc : 5.0mL/MSVOA X/WATER
 ALS Vial : 16 Sample Multiplier: 1

Instrument :
 MSVOA_X
 ClientSampleID :
 EP1-MW-J-0819

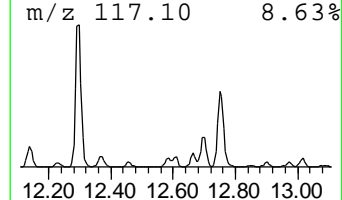
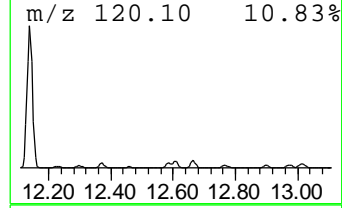
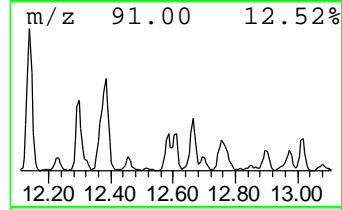
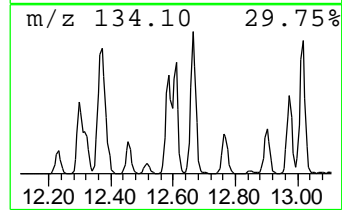
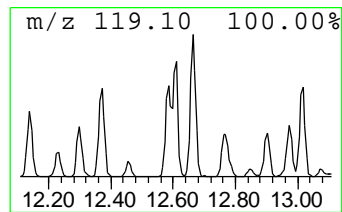
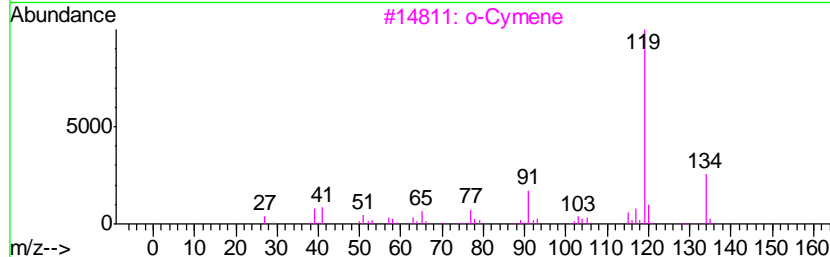
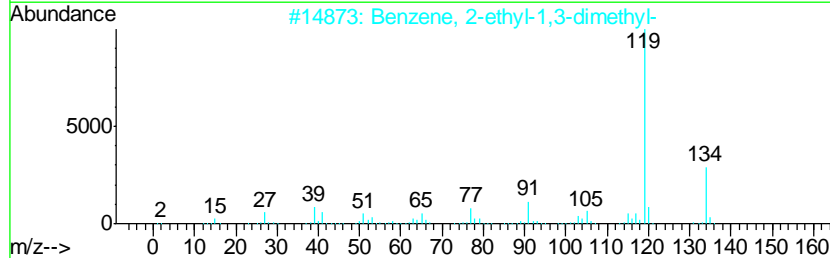
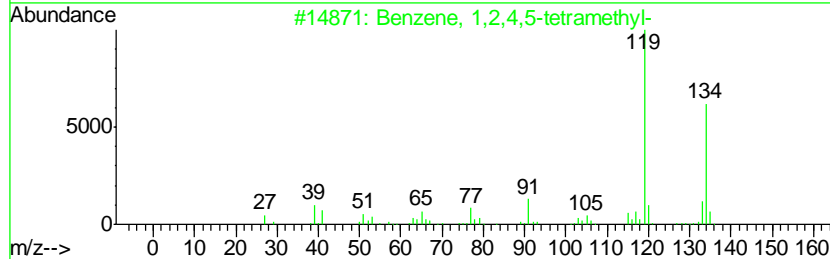
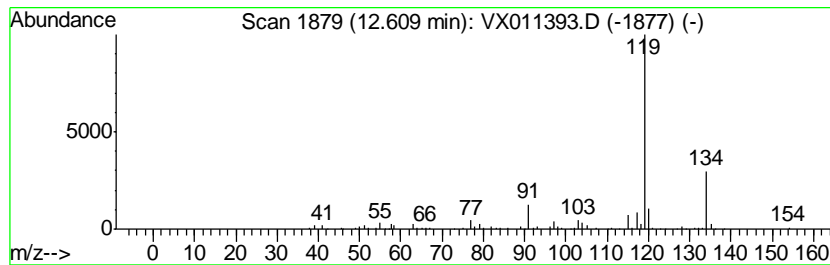
Quant Method : Z:\VOASRV\HPCHEM1\MSVOA_X\METHOD\82X080119W.M
 Quant Title : SW846 8260

TIC Library : C:\DATABASE\NIST11.L
 TIC Integration Parameters: LSCINT.P

 Peak Number 6 Benzene, 1,2,4,5-tetramethyl- Concentration Rank 10

R.T.	EstConc	Area	Relative to ISTD	R.T.
12.61	8.23 ug/l	134260	1,4-Dichlorobenzene-d4	12.07

Hit#	of	Tentative ID	MW	MolForm	CAS#	Qual
1	5	Benzene, 1,2,4,5-tetramethyl-	134	C10H14	000095-93-2	91
2		Benzene, 2-ethyl-1,3-dimethyl-	134	C10H14	002870-04-4	91
3		o-Cymene	134	C10H14	000527-84-4	91
4		Benzene, 1-ethyl-3,5-dimethyl-	134	C10H14	000934-74-7	91
5		Benzene, 4-ethyl-1,2-dimethyl-	134	C10H14	000934-80-5	91



Data Path : Z:\VOASRV\HPCHEM1\MSVOA X\DATA\VX080819\
 Data File : VX011393.D
 Acq On : 08 Aug 2019 17:07
 Operator : JC/SP
 Sample : K4251-01 20X
 Misc : 5.0mL/MSVOA X/WATER
 ALS Vial : 16 Sample Multiplier: 1

Instrument :
 MSVOA_X
 ClientSampled :
 EP1-MW-J-0819

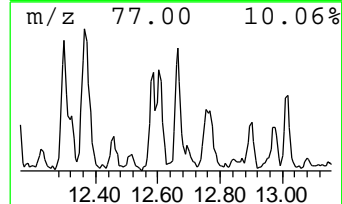
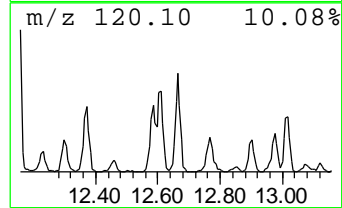
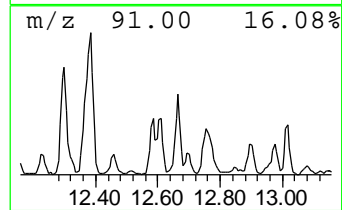
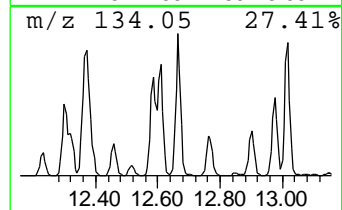
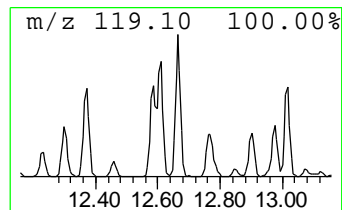
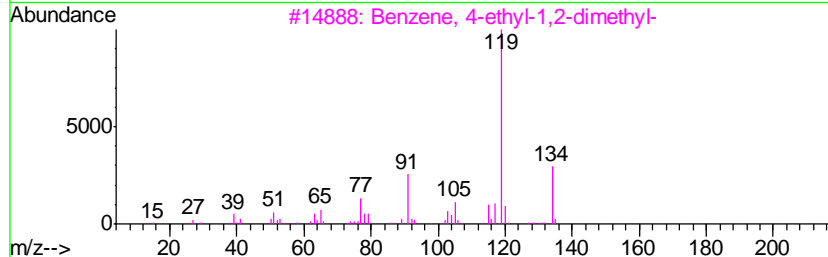
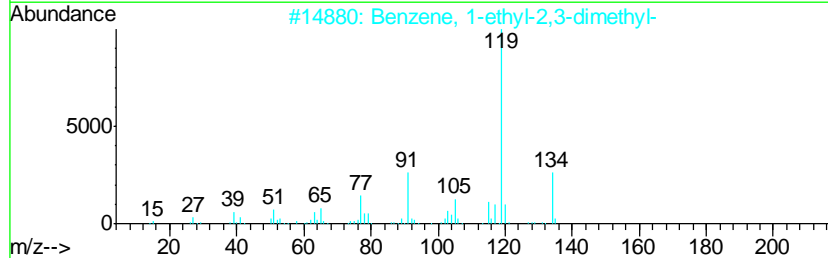
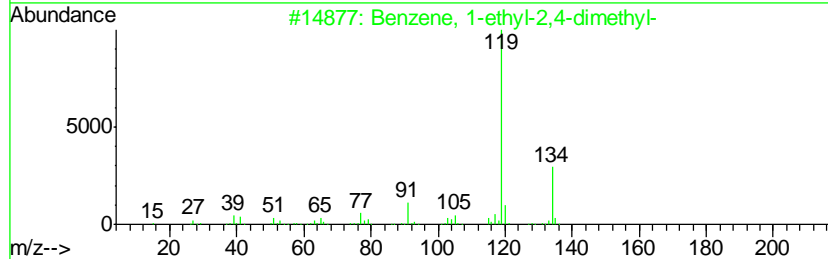
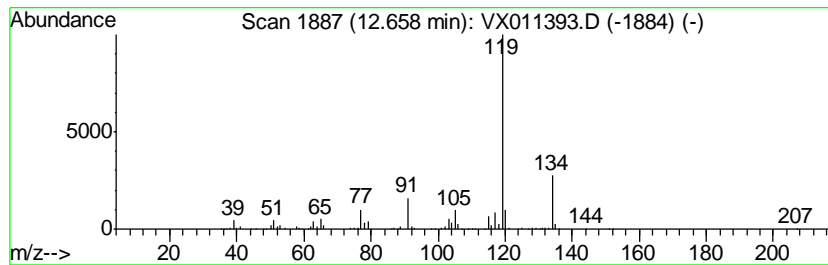
Quant Method : Z:\VOASRV\HPCHEM1\MSVOA_X\METHOD\82X080119W.M
 Quant Title : SW846 8260

TIC Library : C:\DATABASE\NIST11.L
 TIC Integration Parameters: LSCINT.P

 Peak Number 7 Benzene, 1-ethyl-2,4-dimethyl- Concentration Rank 4

R.T.	EstConc	Area	Relative to ISTD	R.T.
12.66	11.11 ug/l	181155	1,4-Dichlorobenzene-d4	12.07

Hit#	of	Tentative ID	MW	MolForm	CAS#	Qual
1	5	Benzene, 1-ethyl-2,4-dimethyl-	134	C10H14	000874-41-9	95
2		Benzene, 1-ethyl-2,3-dimethyl-	134	C10H14	000933-98-2	95
3		Benzene, 4-ethyl-1,2-dimethyl-	134	C10H14	000934-80-5	95
4		Benzene, 2-ethyl-1,4-dimethyl-	134	C10H14	001758-88-9	94
5		Benzene, 2-ethyl-1,3-dimethyl-	134	C10H14	002870-04-4	94



Data Path : Z:\VOASRV\HPCHEM1\MSVOA X\DATA\VX080819\
 Data File : VX011393.D
 Acq On : 08 Aug 2019 17:07
 Operator : JC/SP
 Sample : K4251-01 20X
 Misc : 5.0mL/MSVOA X/WATER
 ALS Vial : 16 Sample Multiplier: 1

Instrument :
 MSVOA_X
 ClientSampled :
 EP1-MW-J-0819

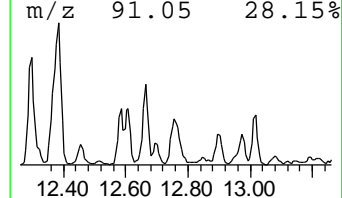
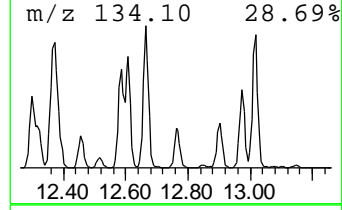
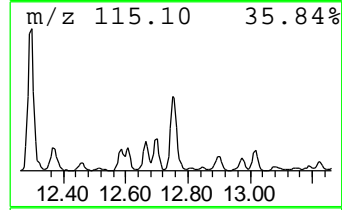
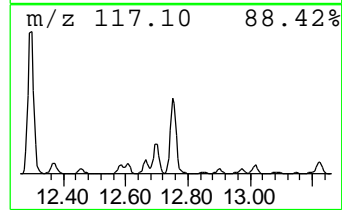
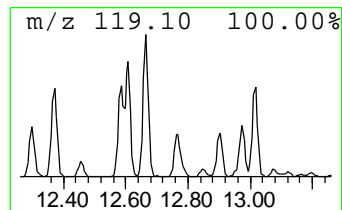
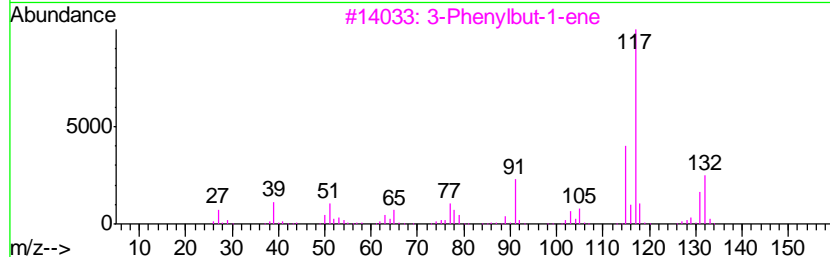
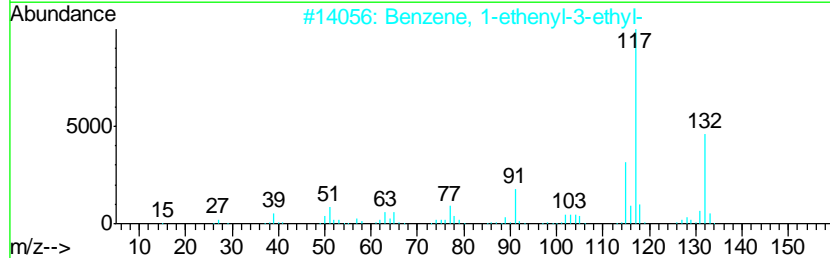
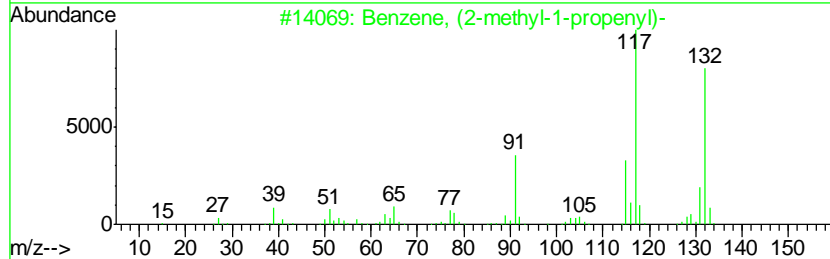
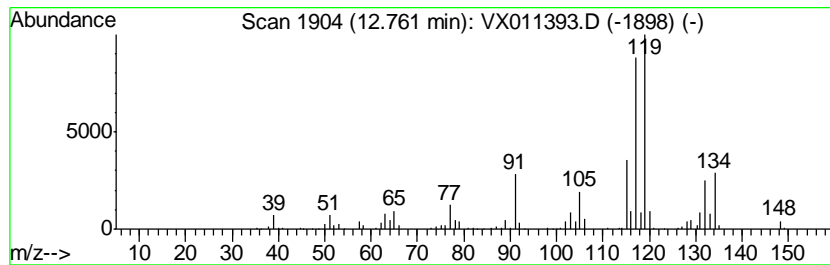
Quant Method : Z:\VOASRV\HPCHEM1\MSVOA_X\METHOD\82X080119W.M
 Quant Title : SW846 8260

TIC Library : C:\DATABASE\NIST11.L
 TIC Integration Parameters: LSCINT.P

 Peak Number 8 Benzene, (2-methyl-1-propen... Concentration Rank 3

R.T.	EstConc	Area	Relative to ISTD	R.T.
12.76	12.26 ug/l	199964	1,4-Dichlorobenzene-d4	12.07

Hit#	of	Tentative ID	MW	MolForm	CAS#	Qual
1	5	Benzene, (2-methyl-1-propenyl)-	132	C10H12	000768-49-0	87
2		Benzene, 1-ethenyl-3-ethyl-	132	C10H12	007525-62-4	83
3		3-Phenylbut-1-ene	132	C10H12	000934-10-1	80
4		Benzene, (2-methylcyclopropyl)-	132	C10H12	1000327-39-0	76
5		Benzene, 1-methyl-4-(2-propenyl)-	132	C10H12	003333-13-9	74



Data Path : Z:\VOASRV\HPCHEM1\MSVOA_X\DATA\VX080819\
Data File : VX011393.D
Acq On : 08 Aug 2019 17:07
Operator : JC/SP
Sample : K4251-01 20X
Misc : 5.0mL/MSVOA_X/WATER
ALS Vial : 16 Sample Multiplier: 1

Instrument :
MSVOA_X
ClientSampleId :
EP1-MW-J-0819

Quant Method : Z:\VOASRV\HPCHEM1\MSVOA_X\METHOD\82X080119W.M
Quant Title : SW846 8260

TIC Library : C:\DATABASE\NIST11.L
TIC Integration Parameters: LSCINT.P

TIC Top Hit name	RT	EstConc	Units	Response	--Internal Standard--			
					#	RT	Resp	Conc
Octane, 2,6-dimet...	10.83	9.4	ug/l	133635	3	10.11	708796	50.0
Cyclohexane, propyl-	10.91	9.2	ug/l	130831	3	10.11	708796	50.0
Mesitylene	12.14	55.5	ug/l	905776	4	12.07	815592	50.0
Benzene, 1-propenyl-	12.30	24.6	ug/l	401438	4	12.07	815592	50.0
Benzene, 2-ethyl-...	12.58	10.1	ug/l	164698	4	12.07	815592	50.0
Benzene, 1,2,4,5-...	12.61	8.2	ug/l	134260	4	12.07	815592	50.0
Benzene, 1-ethyl-...	12.66	11.1	ug/l	181155	4	12.07	815592	50.0
Benzene, (2-methy...	12.76	12.3	ug/l	199964	4	12.07	815592	50.0