

Data Path : Z:\VOASRV\HPCHEM1\MSVOA X\DATA\VX080918\
 Data File : VX003957.D
 Acq On : 09 Aug 2018 18:10
 Operator : JC/MD
 Sample : J4379-11
 Misc : 5.0mL/MSVOA X/WATER
 ALS Vial : 19 Sample Multiplier: 1

Instrument :
 MSVOA_X
 ClientSampleId :
 MW-105D

Quant Time: Aug 10 01:05:43 2018
 Quant Method : Z:\VOASRV\HPCHEM1\MSVOA_X\METHOD\82X080618W.M
 Quant Title : SW846 8260
 QLast Update : Tue Aug 07 07:45:48 2018
 Response via : Initial Calibration

Internal Standards	R.T.	QIon	Response	Conc	Units	Dev(Min)
1) Pentafluorobenzene	5.67	168	319444	50.00	ug/l	0.00
34) 1,4-Difluorobenzene	6.87	114	500963	50.00	ug/l	0.00
63) Chlorobenzene-d5	10.12	117	459885	50.00	ug/l	0.00
72) 1,4-Dichlorobenzene-d4	12.08	152	250733	50.00	ug/l	0.00

System Monitoring Compounds

33) 1,2-Dichloroethane-d4	6.07	65	218641	51.63	ug/l	0.00
Spiked Amount	50.000		Recovery	=	103.26%	
35) Dibromofluoromethane	5.51	113	189756	50.00	ug/l	0.00
Spiked Amount	50.000		Recovery	=	100.00%	
50) Toluene-d8	8.72	98	698361	47.32	ug/l	0.00
Spiked Amount	50.000		Recovery	=	94.64%	
62) 4-Bromofluorobenzene	11.14	95	249414	52.23	ug/l	0.00
Spiked Amount	50.000		Recovery	=	104.46%	

Target Compounds

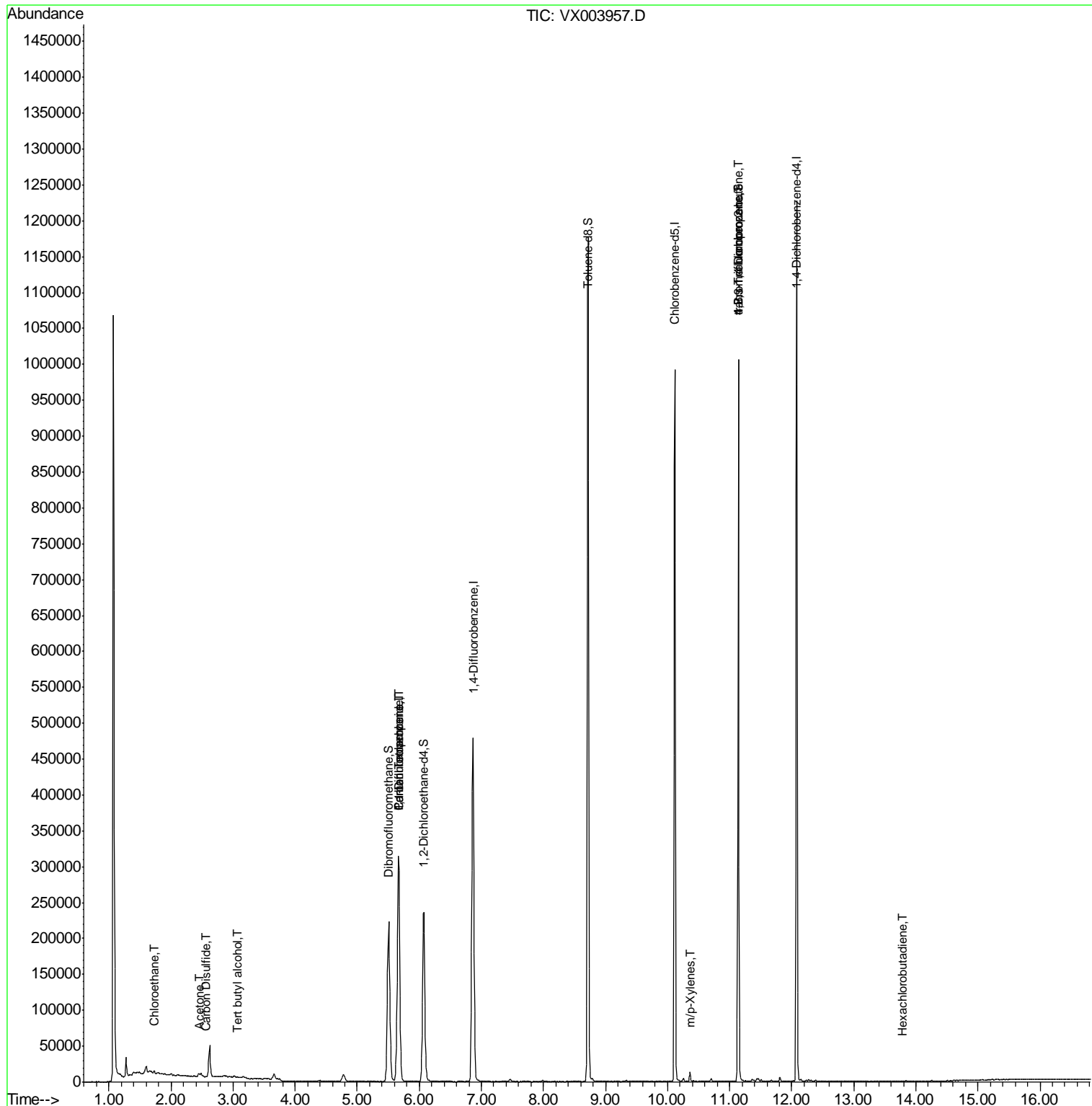
						Qvalue
5) Bromomethane	1.65	94	902	Below Cal	#	77
6) Chloroethane	1.73	64	2529	0.90	ug/l	90
11) Tert butyl alcohol	3.08	59	626	0.62	ug/l	# 62
13) Acrolein	2.29	56	286	Below Cal	#	64
16) Acetone	2.45	43	4178	1.66	ug/l	95
17) Carbon Disulfide	2.56	76	1126	0.55	ug/l	# 79
20) Methylene Chloride	2.85	84	1084	Below Cal	#	67
36) 1,1-Dichloropropene	5.67	75	21301	3.80	ug/l	# 49
38) Carbon Tetrachloride	5.67	117	28395	5.32	ug/l	# 15
68) m/p-Xylenes	10.36	106	2919	0.38	ug/l	99
76) 1,2,3-Trichloropropane	11.14	75	118554	21.41	ug/l	# 36
81) trans-1,4-Dichloro-2-buten	11.14	75	118554	57.87	ug/l	# 9
88) 1,4-Dichlorobenzene	12.10	146	365	Below Cal	#	25
94) Hexachlorobutadiene	13.79	225	157	0.49	ug/l	# 37

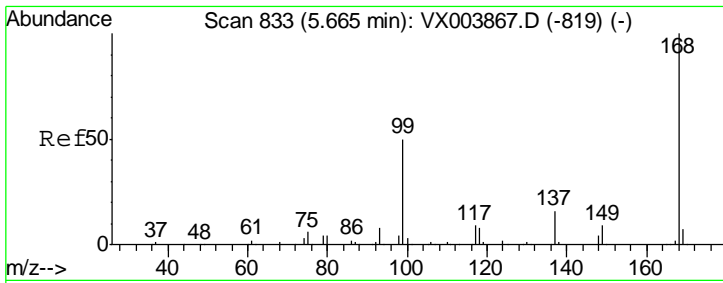
(#) = qualifier out of range (m) = manual integration (+) = signals summed

Data Path : Z:\VOASRV\HPCHEM1\MSVOA X\DATA\VX080918\
 Data File : VX003957.D
 Acq On : 09 Aug 2018 18:10
 Operator : JC/MD
 Sample : J4379-11
 Misc : 5.0mL/MSVOA X/WATER
 ALS Vial : 19 Sample Multiplier: 1

Instrument :
 MSVOA_X
 Client Sampled :
 MW-105D

Quant Time: Aug 10 01:05:43 2018
 Quant Method : Z:\VOASRV\HPCHEM1\MSVOA_X\METHOD\82X080618W.M
 Quant Title : SW846 8260
 QLast Update : Tue Aug 07 07:45:48 2018
 Response via : Initial Calibration

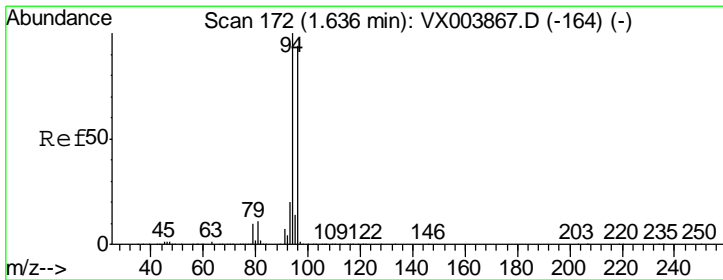
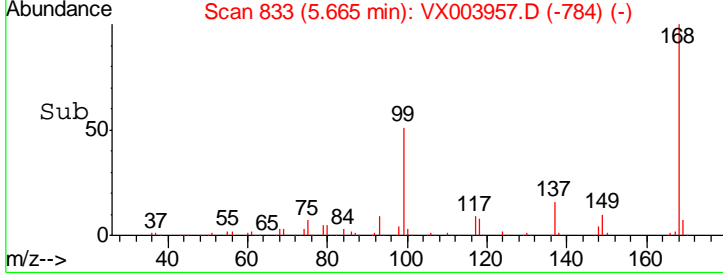
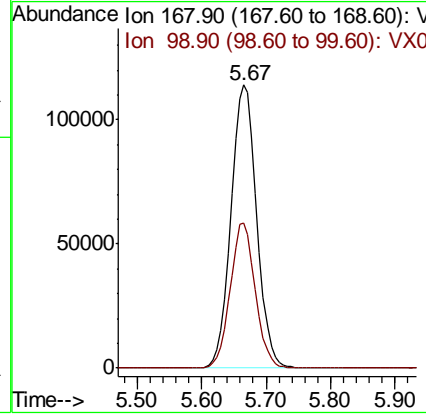
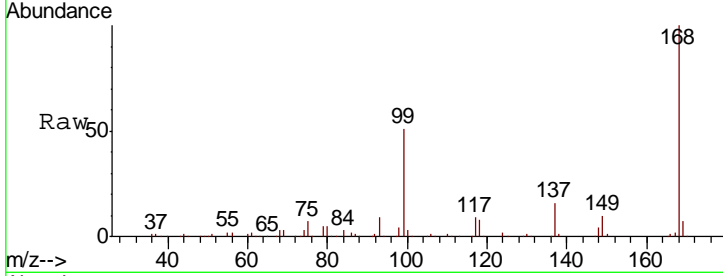




#1
 Pentafluorobenzene
 Concen: 50.00 ug/l
 RT: 5.67 min Scan# 833
 Delta R.T. 0.00 min
 Lab File: VX003957.D
 Acq: 09 Aug 2018 18:10

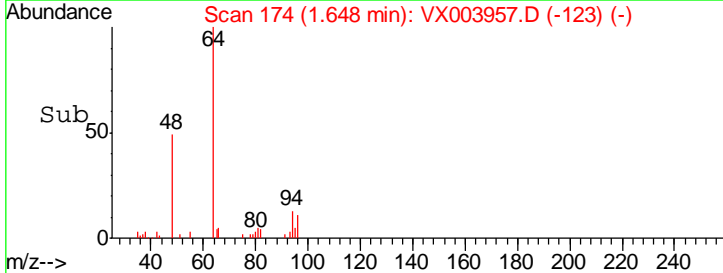
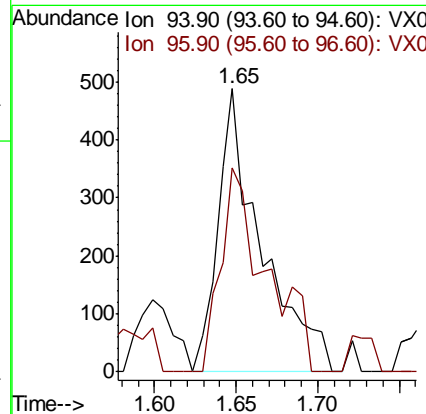
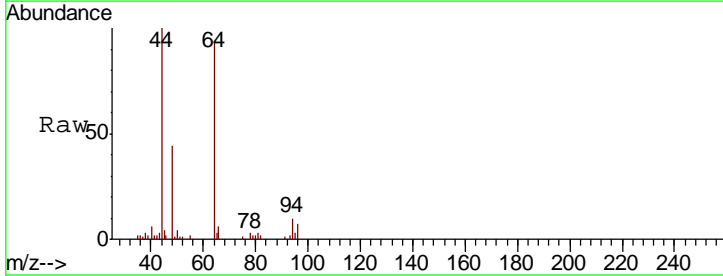
Instrument :
 MSVOA_X
 ClientSampleID :
 MW-105D

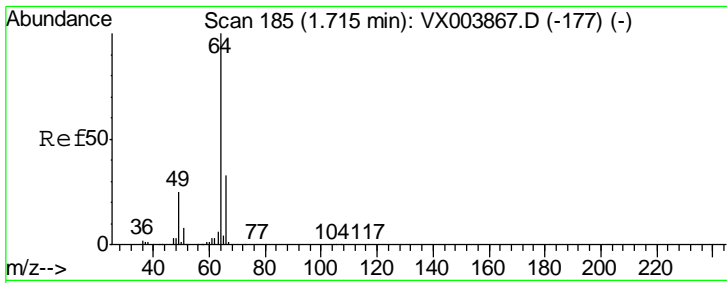
Tgt Ion: 168 Resp: 319444
 Ion Ratio Lower Upper
 168 100
 99 51.3 40.1 60.1



#5
 Bromomethane
 Concen: Below Cal
 RT: 1.65 min Scan# 174
 Delta R.T. 0.01 min
 Lab File: VX003957.D
 Acq: 09 Aug 2018 18:10

Tgt Ion: 94 Resp: 902
 Ion Ratio Lower Upper
 94 100
 96 71.9 75.2 112.8#

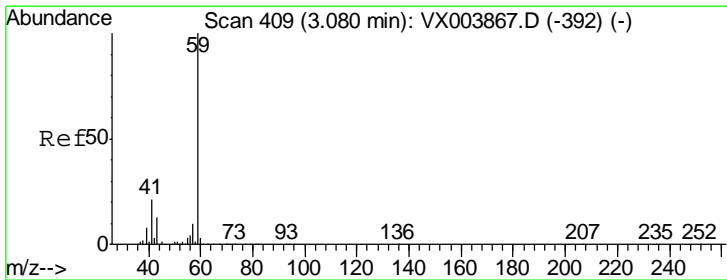
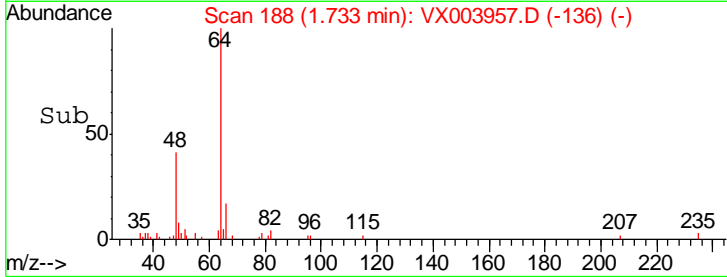
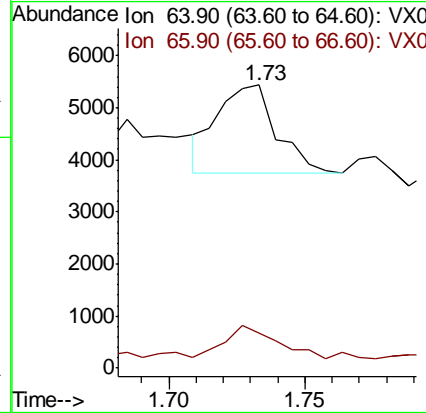
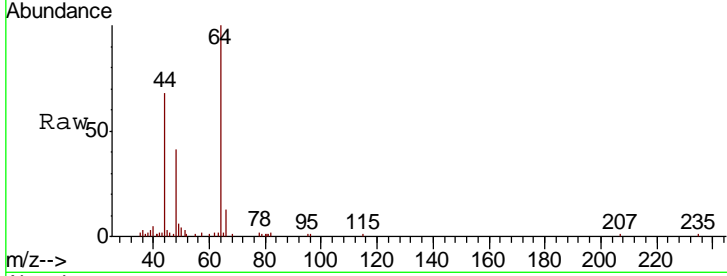




#6
 Chloroethane
 Concen: 0.90 ug/l
 RT: 1.73 min Scan# 188
 Delta R.T. 0.02 min
 Lab File: VX003957.D
 Acq: 09 Aug 2018 18:10

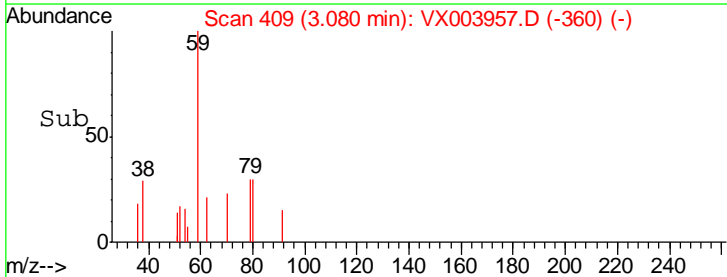
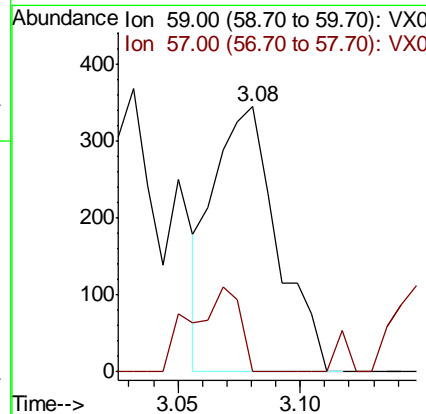
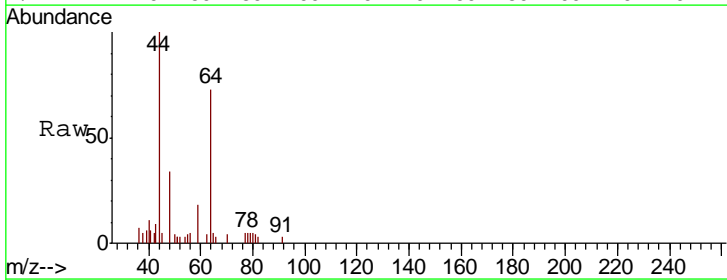
Instrument :
 MSVOA_X
 ClientSampled :
 MW-105D

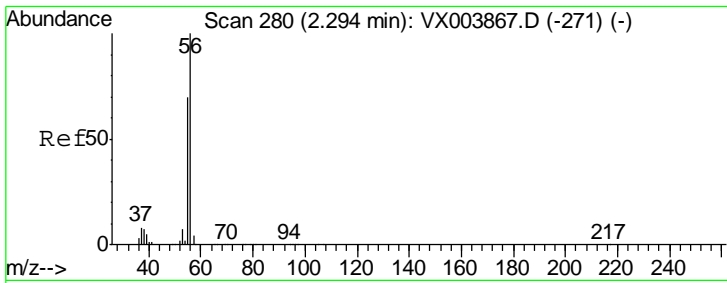
Tgt Ion: 64 Resp: 2529
 Ion Ratio Lower Upper
 64 100
 66 27.7 26.5 39.7



#11
 Tert butyl alcohol
 Concen: 0.62 ug/l
 RT: 3.08 min Scan# 409
 Delta R.T. 0.00 min
 Lab File: VX003957.D
 Acq: 09 Aug 2018 18:10

Tgt Ion: 59 Resp: 626
 Ion Ratio Lower Upper
 59 100
 57 24.1 8.1 12.1#

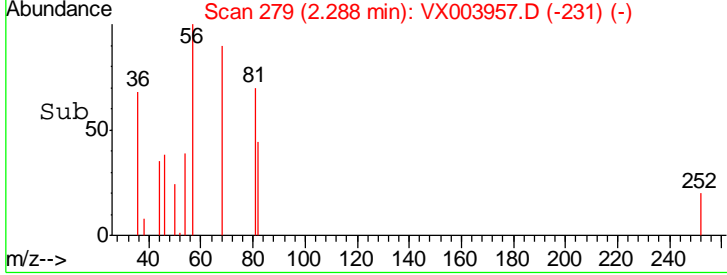
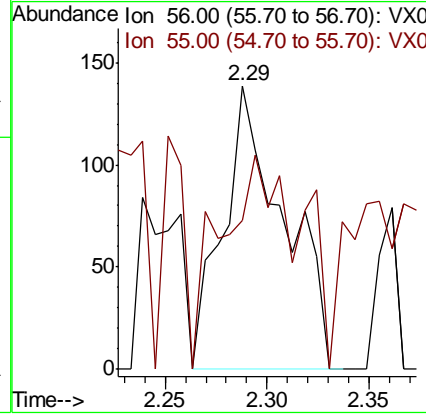
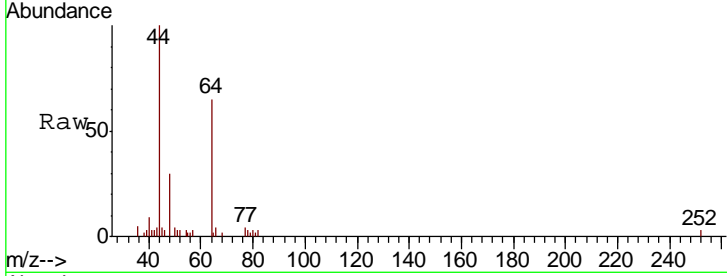




#13
 Acrolein
 Concen: Below Cal
 RT: 2.29 min Scan# 279
 Delta R.T. -0.01 min
 Lab File: VX003957.D
 Acq: 09 Aug 2018 18:10

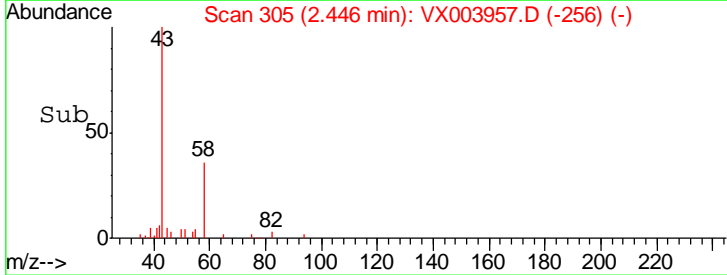
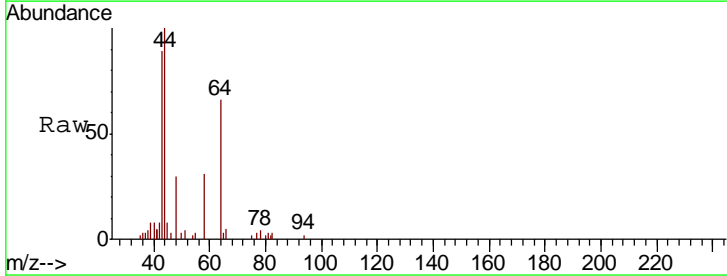
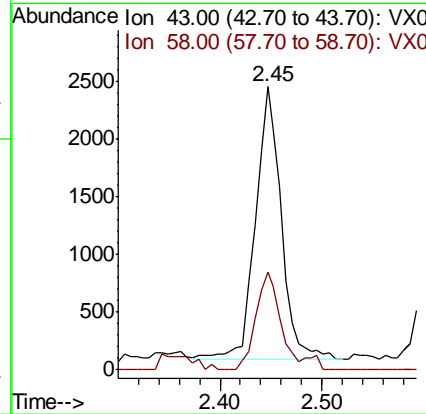
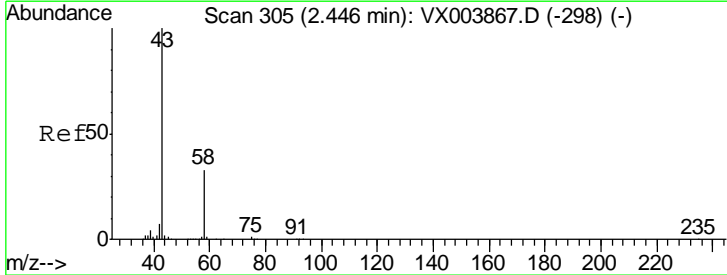
Instrument : MSVOA_X
 ClientSampled : MW-105D

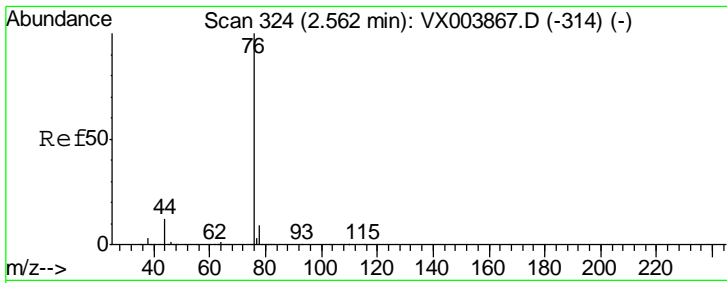
Tgt Ion	Resp	Lower	Upper
56	100		
55	99.3	56.1	84.1#



#16
 Acetone
 Concen: 1.66 ug/l
 RT: 2.45 min Scan# 305
 Delta R.T. 0.00 min
 Lab File: VX003957.D
 Acq: 09 Aug 2018 18:10

Tgt Ion	Resp	Lower	Upper
43	100		
58	35.9	26.4	39.6

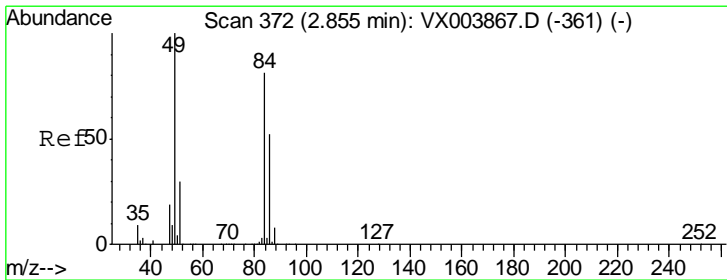
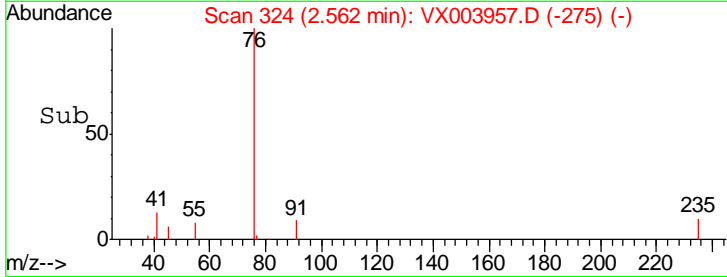
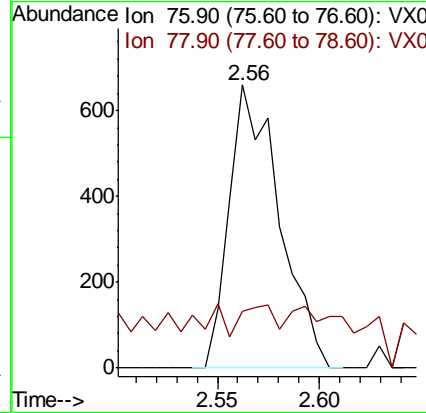
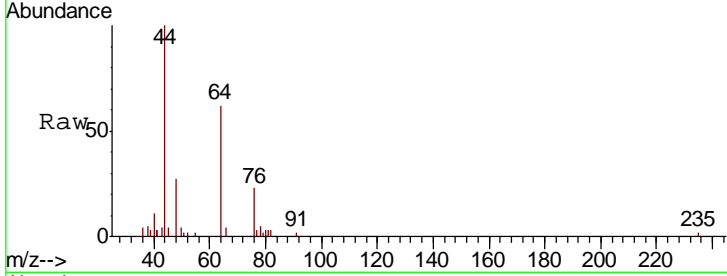




#17
 Carbon Disulfide
 Concen: 0.55 ug/l
 RT: 2.56 min Scan# 324
 Delta R.T. 0.00 min
 Lab File: VX003957.D
 Acq: 09 Aug 2018 18:10

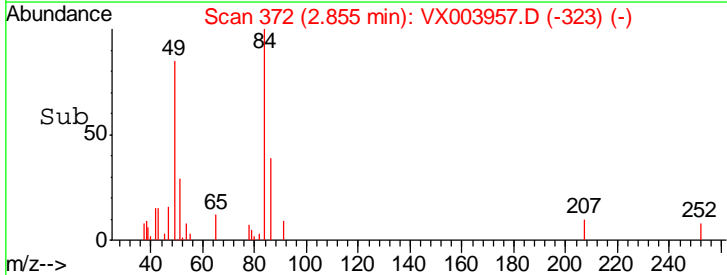
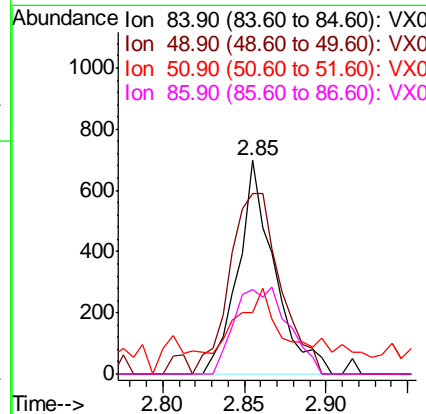
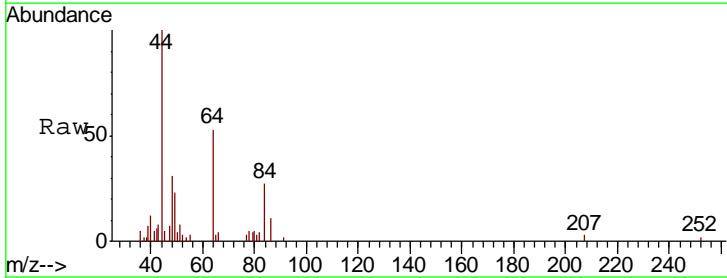
Instrument :
 MSVOA_X
 ClientSampled :
 MW-105D

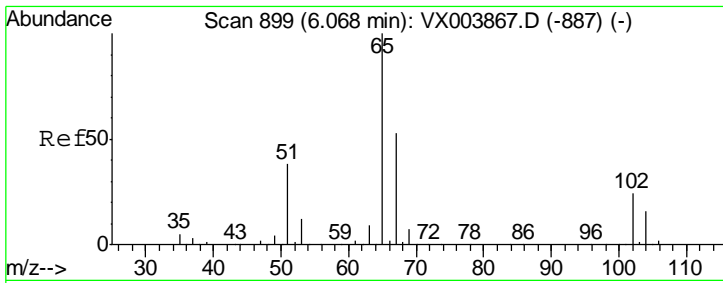
Tgt Ion	Resp	Lower	Upper
76	1126		
76	100		
78	1.8	7.5	11.3#



#20
 Methylene Chloride
 Concen: Below Cal
 RT: 2.85 min Scan# 372
 Delta R.T. 0.00 min
 Lab File: VX003957.D
 Acq: 09 Aug 2018 18:10

Tgt Ion	Resp	Lower	Upper
84	1084		
84	100		
49	84.7	98.9	148.3#
51	17.8	29.9	44.9#
86	39.4	51.0	76.6#

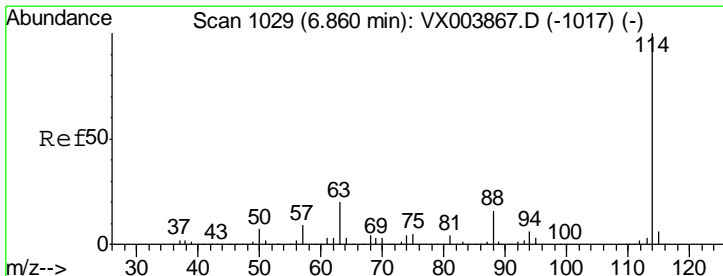
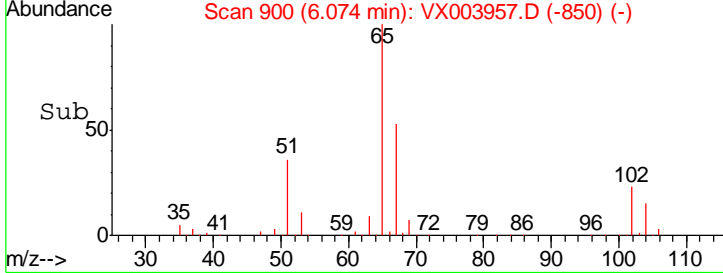
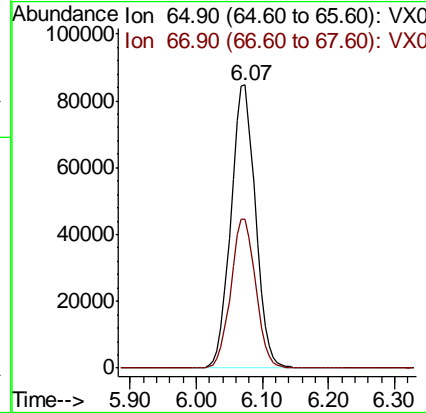
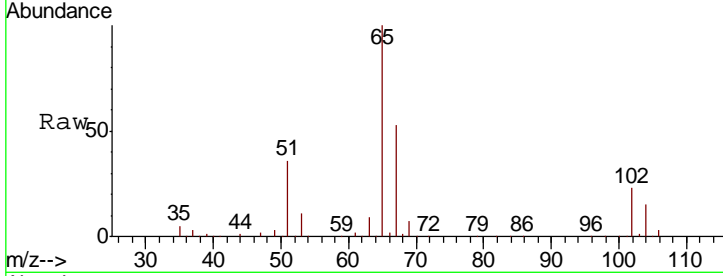




#33
 1,2-Dichloroethane-d4
 Concen: 51.63 ug/l
 RT: 6.07 min Scan# 900
 Delta R.T. 0.01 min
 Lab File: VX003957.D
 Acq: 09 Aug 2018 18:10

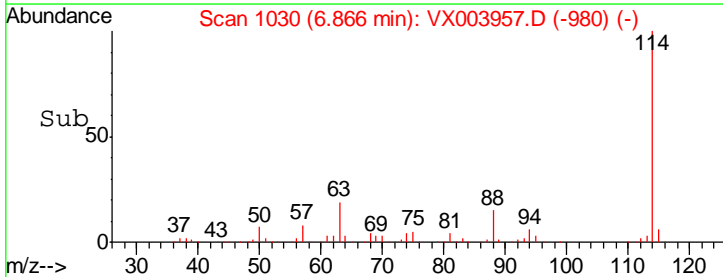
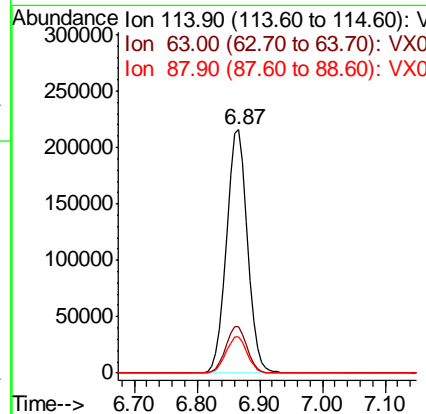
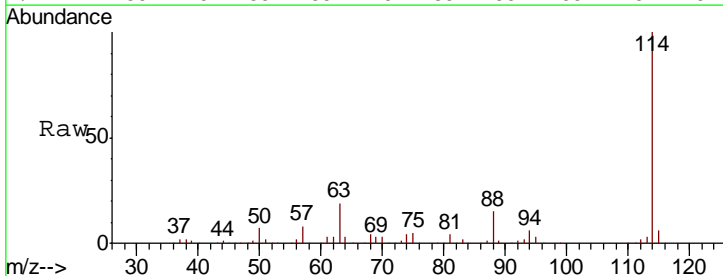
Instrument :
 MSVOA_X
ClientSampled :
 MW-105D

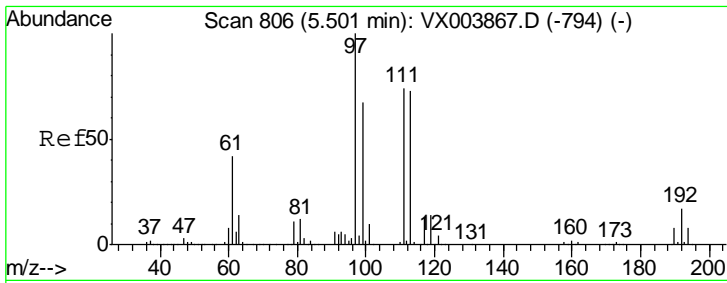
Tgt Ion: 65 Resp: 218641
 Ion Ratio Lower Upper
 65 100
 67 53.1 0.0 105.8



#34
 1,4-Difluorobenzene
 Concen: 50.00 ug/l
 RT: 6.87 min Scan# 1030
 Delta R.T. 0.01 min
 Lab File: VX003957.D
 Acq: 09 Aug 2018 18:10

Tgt Ion: 114 Resp: 500963
 Ion Ratio Lower Upper
 114 100
 63 19.2 0.0 39.0
 88 14.7 0.0 32.0

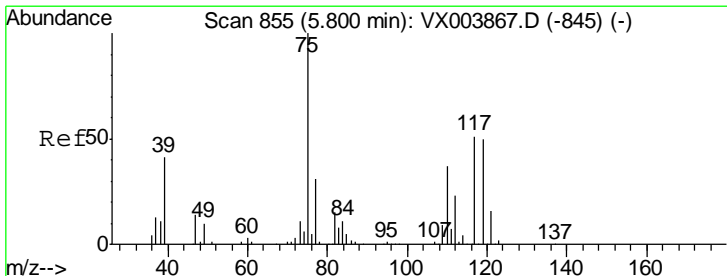
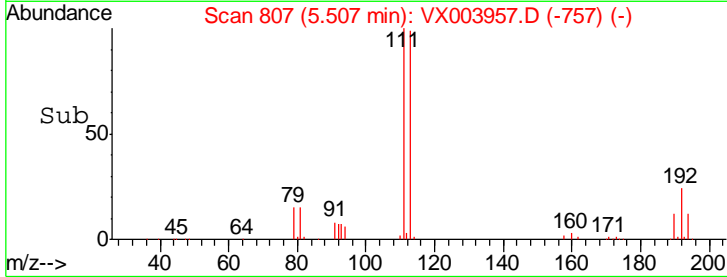
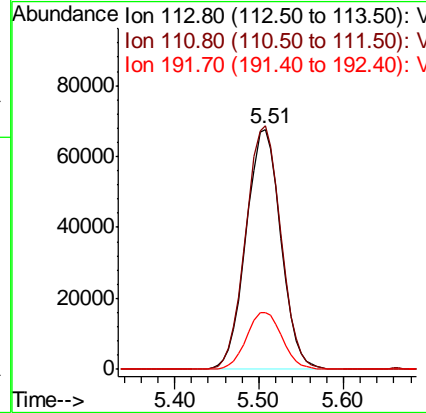
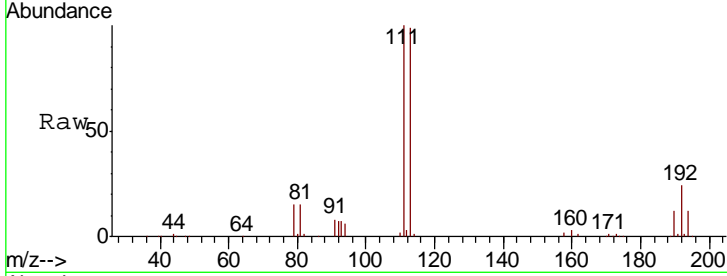




#35
 Dibromofluoromethane
 Concen: 50.00 ug/l
 RT: 5.51 min Scan# 807
 Delta R.T. 0.01 min
 Lab File: VX003957.D
 Acq: 09 Aug 2018 18:10

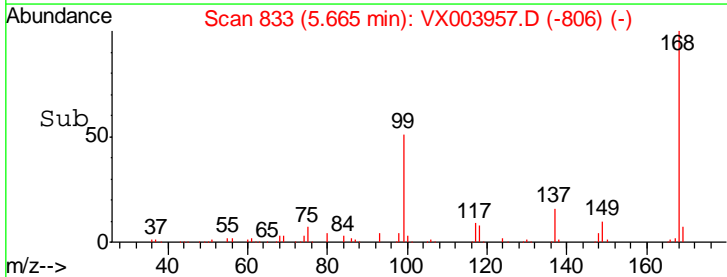
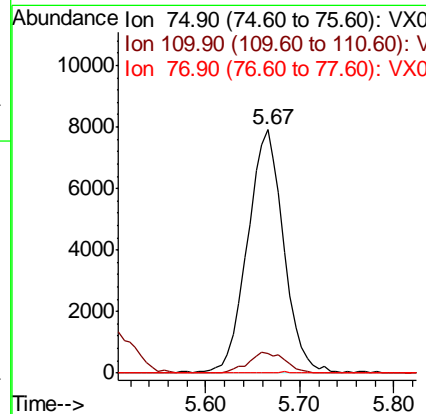
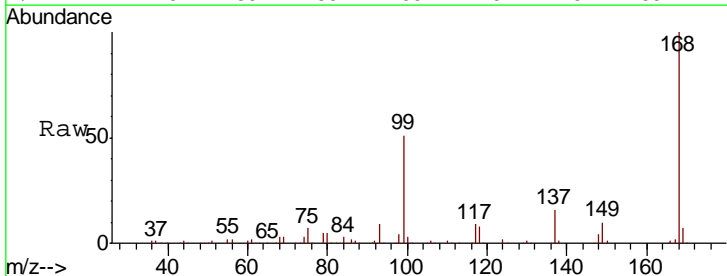
Instrument :
 MSVOA_X
 ClientSampled :
 MW-105D

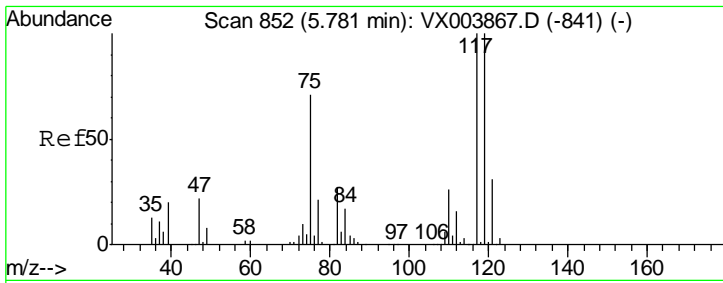
Tgt Ion	Resp	Lower	Upper
113	189756		
111	102.4	82.0	123.0
192	24.3	19.0	28.4



#36
 1,1-Dichloropropene
 Concen: 3.80 ug/l
 RT: 5.67 min Scan# 833
 Delta R.T. -0.13 min
 Lab File: VX003957.D
 Acq: 09 Aug 2018 18:10

Tgt Ion	Resp	Lower	Upper
75	21301		
110	8.8	18.2	54.6#
77	0.0	25.0	37.4#

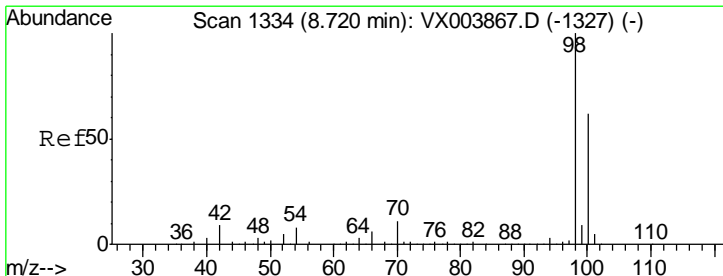
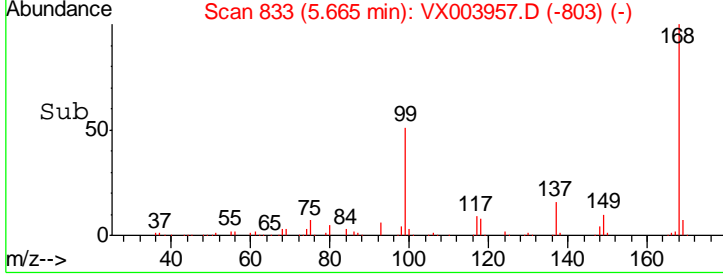
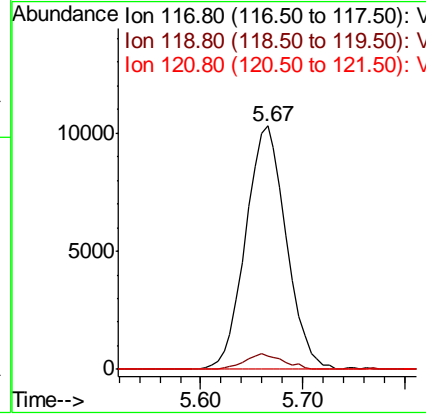
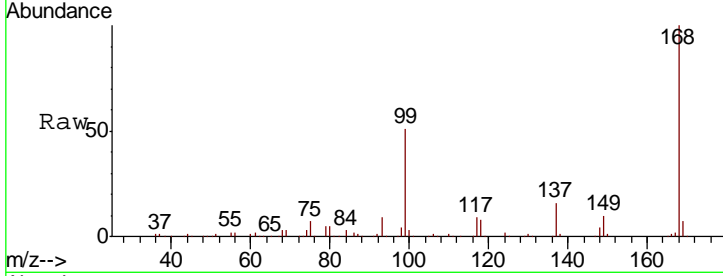




#38
 Carbon Tetrachloride
 Concen: 5.32 ug/l
 RT: 5.67 min Scan# 833
 Delta R.T. -0.12 min
 Lab File: VX003957.D
 Acq: 09 Aug 2018 18:10

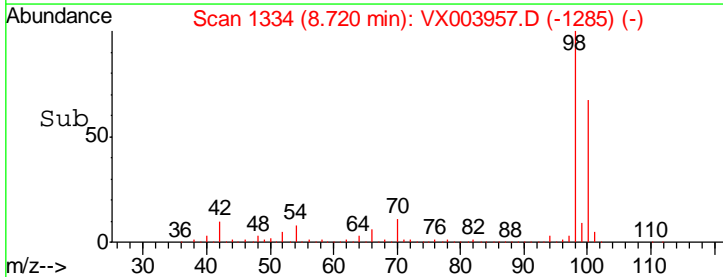
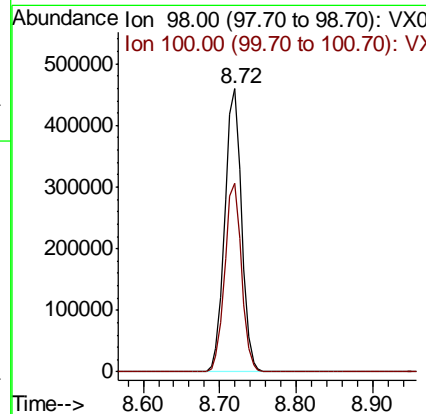
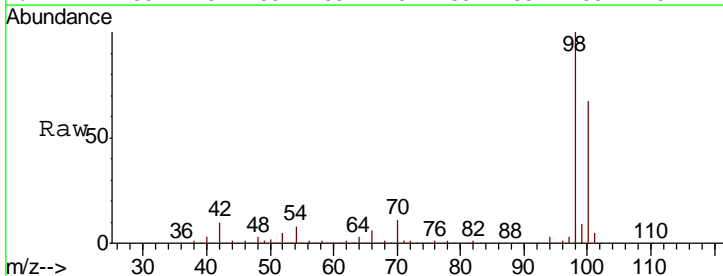
Instrument :
 MSVOA_X
ClientSampled :
 MW-105D

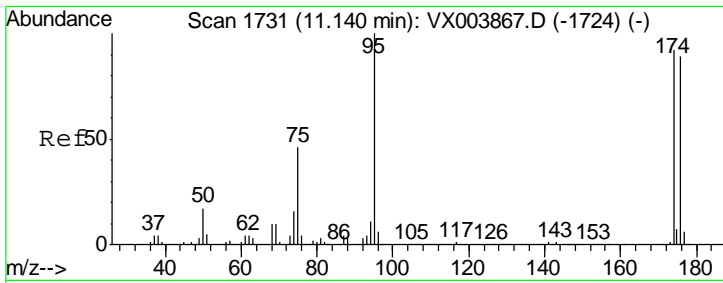
Tgt Ion	Resp	Lower	Upper
117	28395		
119	5.2	79.5	119.3#
121	0.0	25.0	37.4#



#50
 Toluene-d8
 Concen: 47.32 ug/l
 RT: 8.72 min Scan# 1334
 Delta R.T. 0.00 min
 Lab File: VX003957.D
 Acq: 09 Aug 2018 18:10

Tgt Ion	Resp	Lower	Upper
98	698361		
100	66.5	53.3	79.9

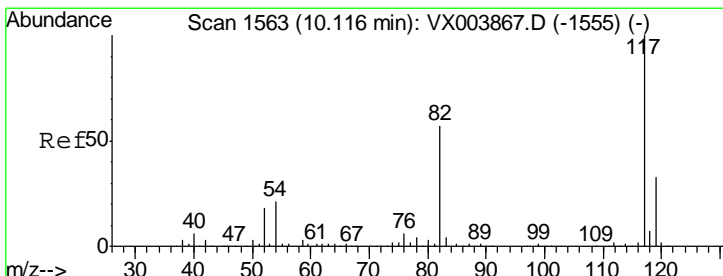
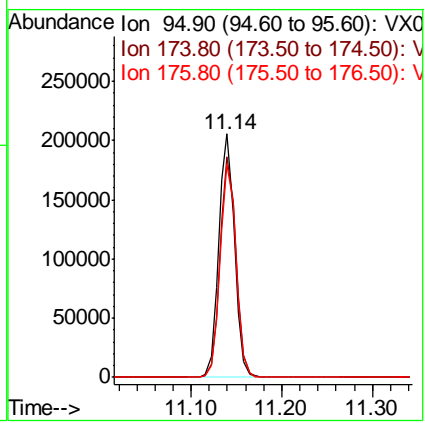
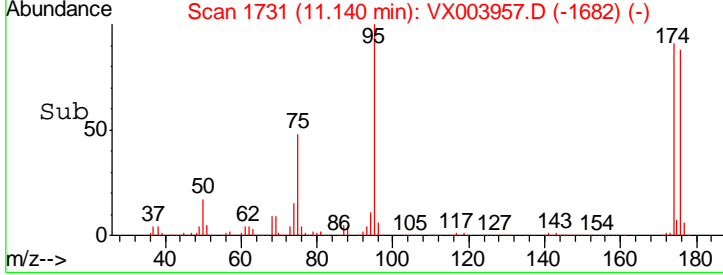
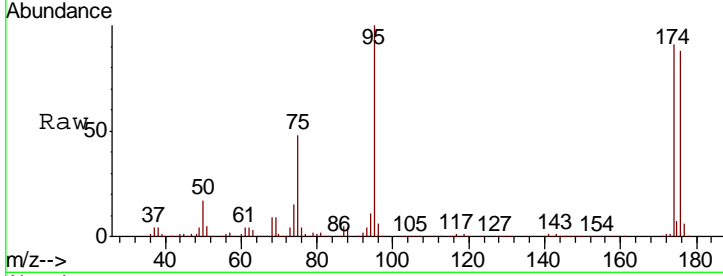




#62
 4-Bromofluorobenzene
 Concen: 52.23 ug/l
 RT: 11.14 min Scan# 1731
 Delta R.T. 0.00 min
 Lab File: VX003957.D
 Acq: 09 Aug 2018 18:10

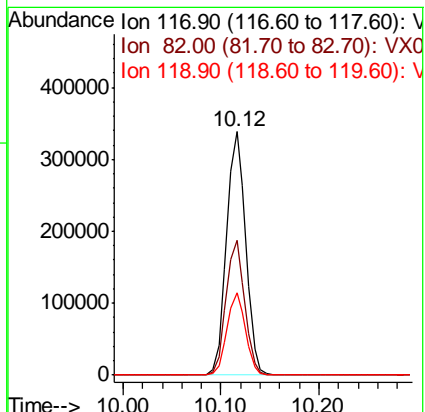
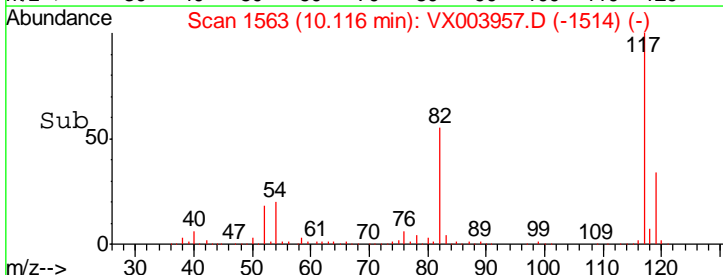
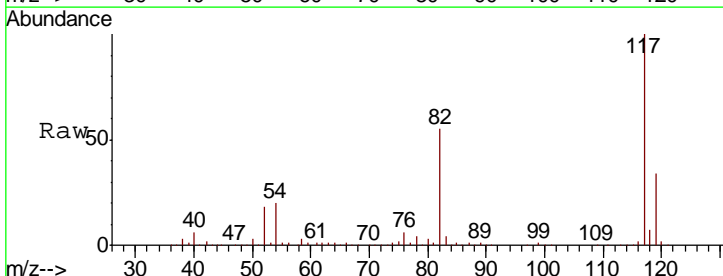
Instrument : MSVOA_X
 ClientSampled : MW-105D

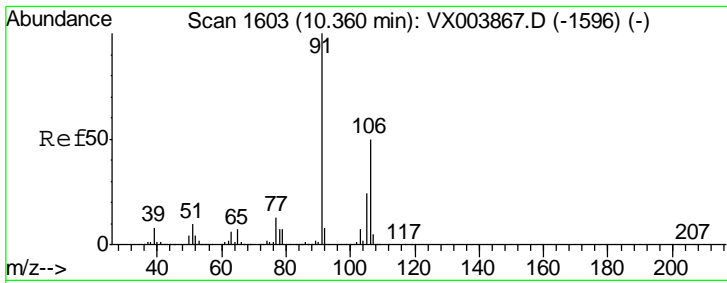
Tgt Ion	Resp	Lower	Upper
95	249414		
174	91.7	0.0	182.8
176	88.3	0.0	179.0



#63
 Chlorobenzene-d5
 Concen: 50.00 ug/l
 RT: 10.12 min Scan# 1563
 Delta R.T. 0.00 min
 Lab File: VX003957.D
 Acq: 09 Aug 2018 18:10

Tgt Ion	Resp	Lower	Upper
117	459885		
82	55.5	45.4	68.0
119	33.8	26.6	40.0

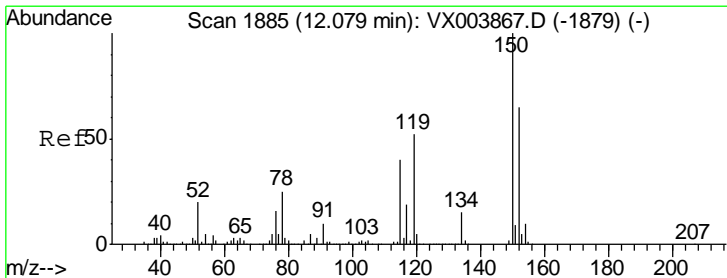
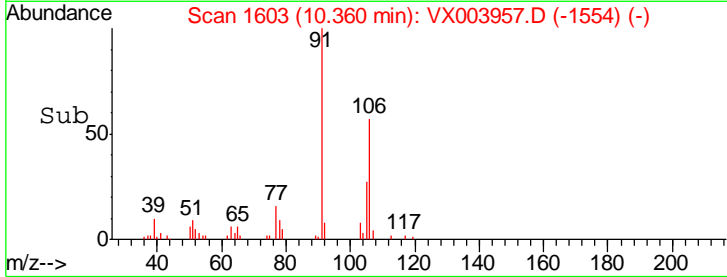
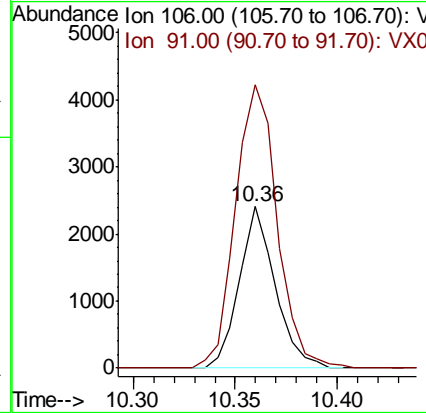
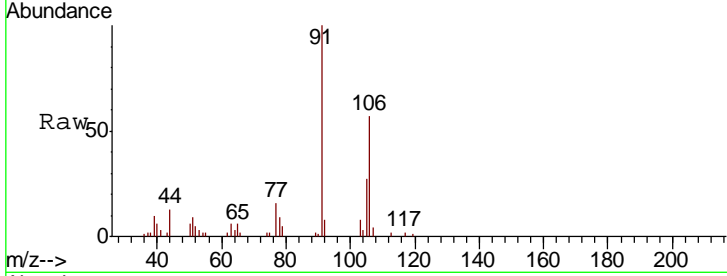




#68
 m/p-Xylenes
 Concen: 0.38 ug/l
 RT: 10.36 min Scan# 1603
 Delta R.T. 0.00 min
 Lab File: VX003957.D
 Acq: 09 Aug 2018 18:10

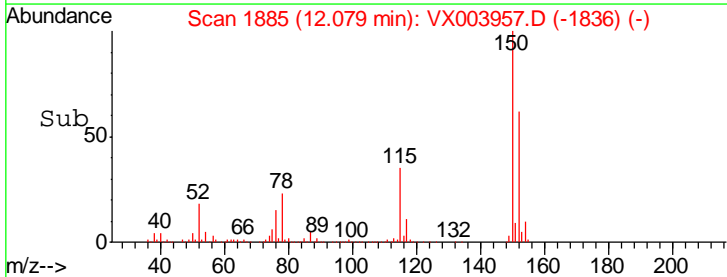
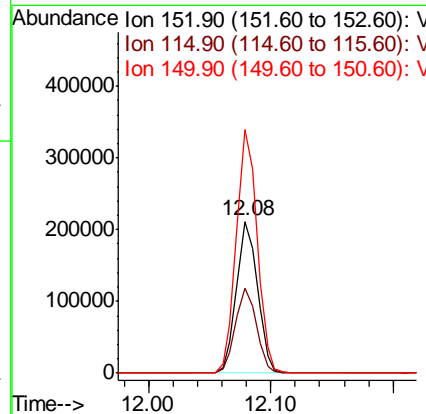
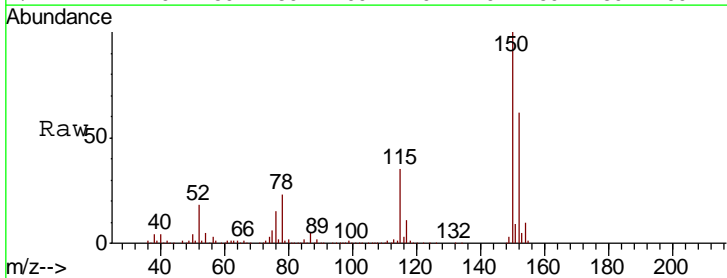
Instrument :
 MSVOA_X
 ClientSampled :
 MW-105D

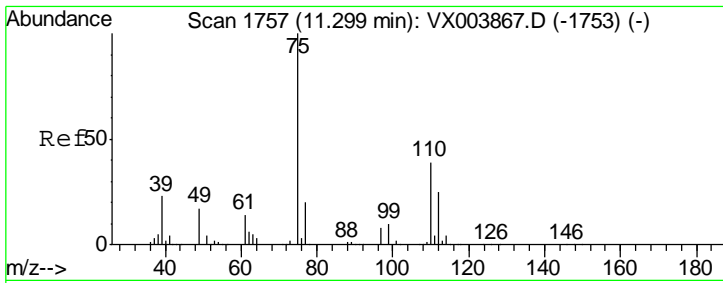
Tgt Ion:106 Resp: 2919
 Ion Ratio Lower Upper
 106 100
 91 204.8 162.3 243.5



#72
 1,4-Dichlorobenzene-d4
 Concen: 50.00 ug/l
 RT: 12.08 min Scan# 1885
 Delta R.T. 0.00 min
 Lab File: VX003957.D
 Acq: 09 Aug 2018 18:10

Tgt Ion:152 Resp: 250733
 Ion Ratio Lower Upper
 152 100
 115 55.9 39.1 117.3
 150 159.0 0.0 349.2

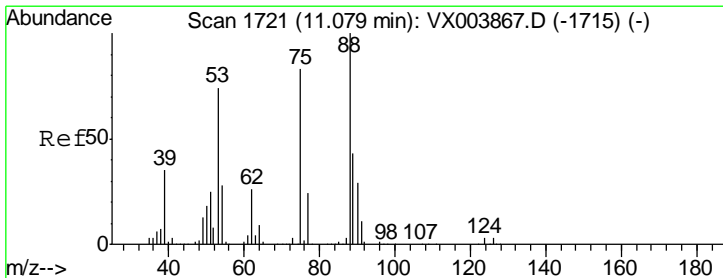
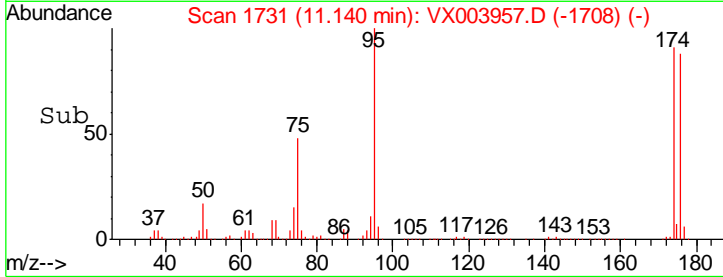
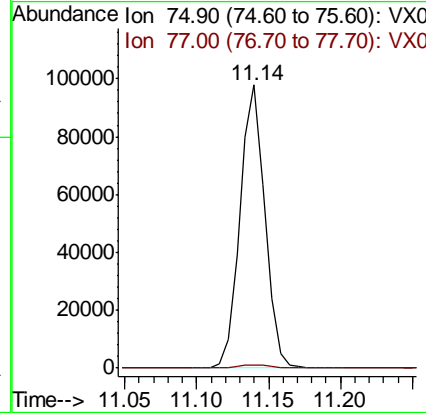
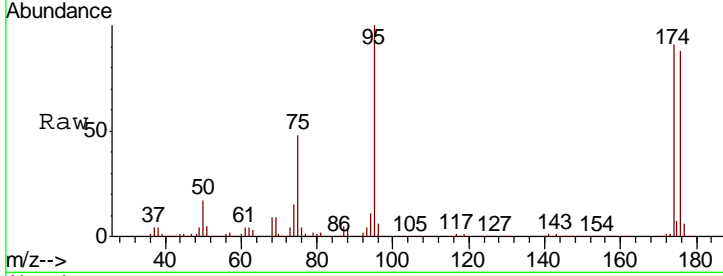




#76
 1,2,3-Trichloropropane
 Concen: 21.41 ug/l
 RT: 11.14 min Scan# 1731
 Delta R.T. -0.16 min
 Lab File: VX003957.D
 Acq: 09 Aug 2018 18:10

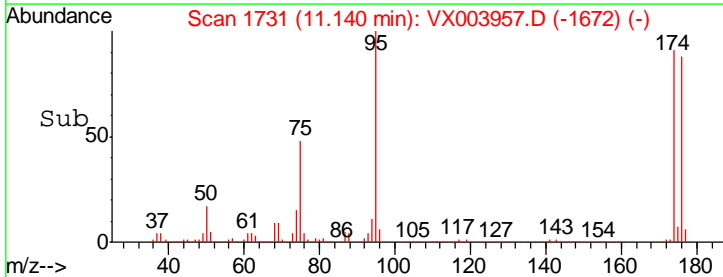
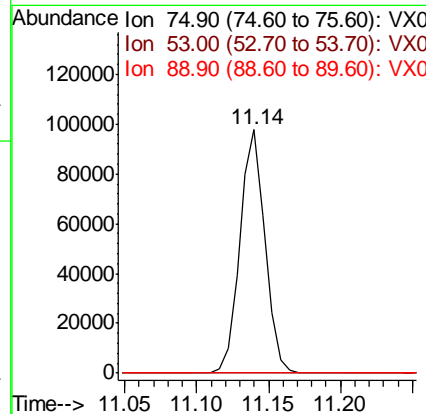
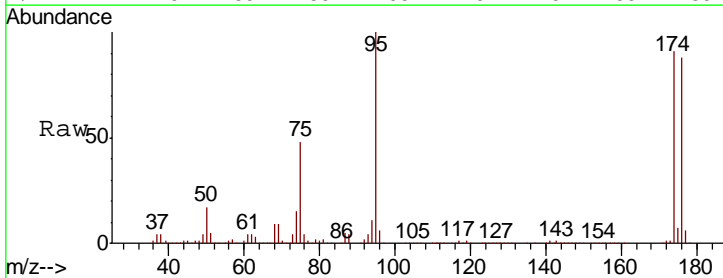
Instrument :
 MSVOA_X
 Client Sampled :
 MW-105D

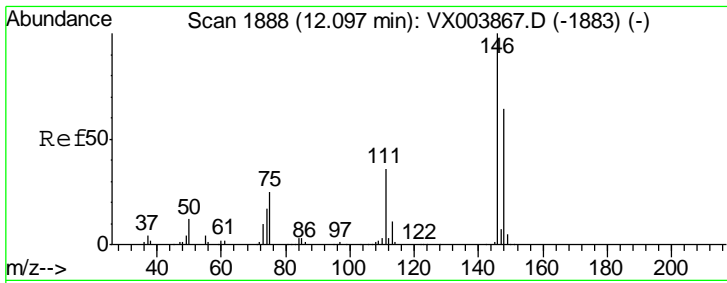
Tgt Ion: 75 Resp: 118554
 Ion Ratio Lower Upper
 75 100
 77 1.3 20.8 62.5#



#81
 trans-1,4-Dichloro-2-butene
 Concen: 57.87 ug/l
 RT: 11.14 min Scan# 1731
 Delta R.T. 0.06 min
 Lab File: VX003957.D
 Acq: 09 Aug 2018 18:10

Tgt Ion: 75 Resp: 118554
 Ion Ratio Lower Upper
 75 100
 53 0.2 80.3 120.5#
 89 0.0 37.8 56.8#

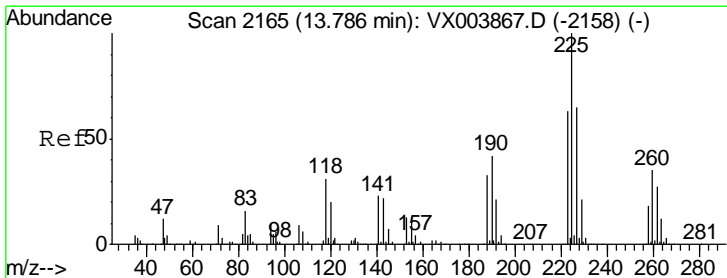
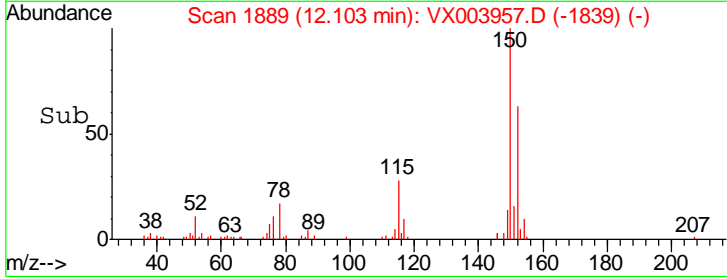
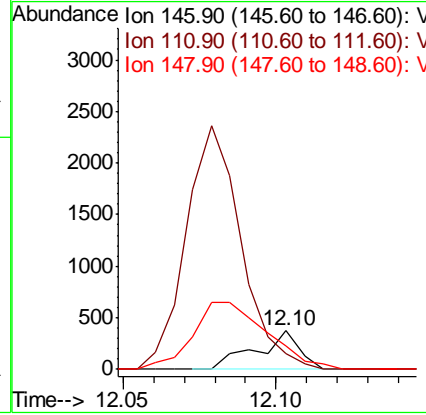
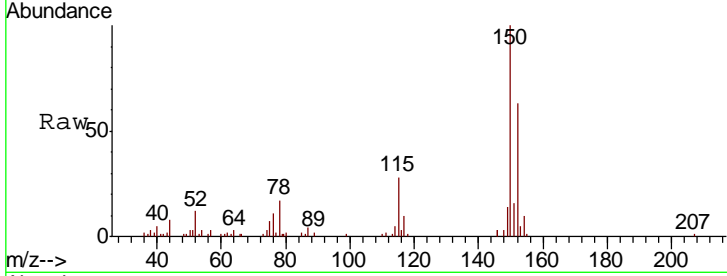




#88
 1,4-Dichlorobenzene
 Concen: Below Cal
 RT: 12.10 min Scan# 1889
 Delta R.T. 0.01 min
 Lab File: VX003957.D
 Acq: 09 Aug 2018 18:10

Instrument : MSVOA_X
 ClientSampled : MW-105D

Tgt Ion	Resp	Lower	Upper
146	100		
111	0.0	18.4	55.0#
148	0.0	32.3	96.8#



#94
 Hexachlorobutadiene
 Concen: 0.49 ug/l
 RT: 13.79 min Scan# 2165
 Delta R.T. 0.00 min
 Lab File: VX003957.D
 Acq: 09 Aug 2018 18:10

Tgt Ion	Resp	Lower	Upper
225	100		
223	28.7	31.4	94.0#
227	0.0	32.1	96.5#

