

Data Path : Z:\voasrv\HPCHEM1\MSVOA\_X\Data\VX080921\  
 Data File : VX023619.D  
 Acq On : 09 Aug 2021 17:35  
 Operator : JC/MD  
 Sample : M3276-02  
 Misc : 5.0mL/MSVOA\_X/WATER  
 ALS Vial : 19 Sample Multiplier: 1

Instrument :  
 MSVOA\_X  
 ClientSampled :

Quant Time: Aug 10 04:04:21 2021  
 Quant Method : Z:\voasrv\HPCHEM1\MSVOA\_X\Method\82X072221W.M  
 Quant Title : SW846 8260  
 QLast Update : Fri Jul 23 06:05:38 2021  
 Response via : Initial Calibration

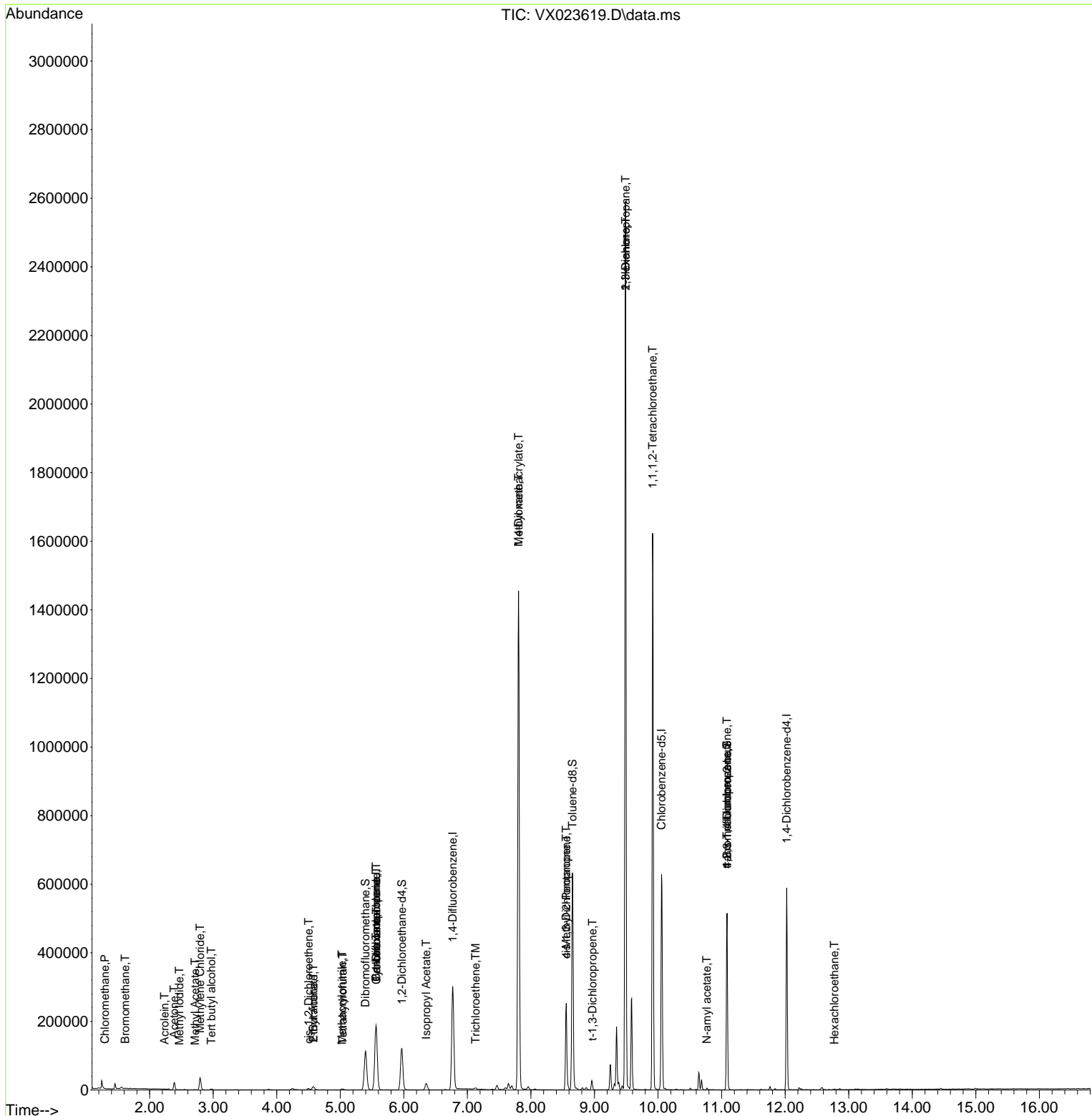
Compound	R.T.	QIon	Response	Conc	Units	Dev(Min)
-----						
Internal Standards						
1) Pentafluorobenzene	5.562	168	178921	50.00	ug/l	0.00
34) 1,4-Difluorobenzene	6.769	114	301172	50.00	ug/l	0.00
63) Chlorobenzene-d5	10.055	117	280857	50.00	ug/l	0.00
72) 1,4-Dichlorobenzene-d4	12.024	152	114818	50.00	ug/l	0.00
System Monitoring Compounds						
33) 1,2-Dichloroethane-d4	5.970	65	119445	53.52	ug/l	0.00
Spiked Amount	50.000	Range	78 - 117	Recovery	=	107.04%
35) Dibromofluoromethane	5.397	113	95798	50.87	ug/l	0.00
Spiked Amount	50.000	Range	75 - 124	Recovery	=	101.74%
50) Toluene-d8	8.653	98	369461	53.40	ug/l	0.00
Spiked Amount	50.000	Range	92 - 112	Recovery	=	106.80%
62) 4-Bromofluorobenzene	11.085	95	129537	55.06	ug/l	0.00
Spiked Amount	50.000	Range	83 - 123	Recovery	=	110.12%
Target Compounds						
						Qvalue
3) Chloromethane	1.294	50	486	0.25	ug/l #	75
5) Bromomethane	1.618	94	610	0.53	ug/l	93
10) Methyl Iodide	2.465	142	684	0.31	ug/l #	76
11) Tert butyl alcohol	2.971	59	3104	6.09	ug/l	97
13) Acrolein	2.233	56	47	1.54	ug/l #	1
16) Acetone	2.386	43	22296	20.36	ug/l	95
18) Methyl Acetate	2.715	43	1429	0.55	ug/l #	73
20) Methylene Chloride	2.794	84	15689	7.37	ug/l #	88
25) 2-Butanone	4.574	43	17246	10.15	ug/l	91
27) cis-1,2-Dichloroethene	4.501	96	2408	1.11	ug/l	96
29) Tetrahydrofuran	5.038	42	2747	2.47	ug/l #	57
31) Cyclohexane	5.568	56	4020	1.22	ug/l #	27
36) 1,1-Dichloropropene	5.562	75	13663	5.02	ug/l #	48
37) Ethyl Acetate	4.574	43	17246	5.02	ug/l #	64
38) Carbon Tetrachloride	5.562	117	18607	6.72	ug/l #	15
41) Methacrylonitrile	5.025	41	1697	0.94	ug/l #	38
43) Isopropyl Acetate	6.354	43	24868	4.67	ug/l	94
44) Trichloroethene	7.129	130	1212	0.55	ug/l	80
48) Methyl methacrylate	7.805	41	128461	52.11	ug/l #	38
49) 1,4-Dioxane	7.805	88	247	4.71	ug/l #	1
51) 4-Methyl-2-Pentanone	8.555	43	89676	27.54	ug/l #	44
53) t-1,3-Dichloropropene	8.970	75	40	1.83	ug/l #	44
54) cis-1,3-Dichloropropene	8.555	75	37622	11.55	ug/l #	69
57) 1,3-Dichloropropane	9.488	76	21268	6.18	ug/l #	43
59) 2-Hexanone	9.488	43	307688	124.45	ug/l #	43
66) 1,1,1,2-Tetrachloroethane	9.915	131	20	0.98	ug/l #	8
74) N-amyl acetate	10.768	43	2787	0.71	ug/l #	45
76) 1,2,3-Trichloropropane	11.085	75	68254	27.01	ug/l #	39
81) trans-1,4-Dichloro-2-b...	11.085	75	68254	72.64	ug/l #	12
90) Hexachloroethane	12.774	117	48	1.93	ug/l #	9
-----						

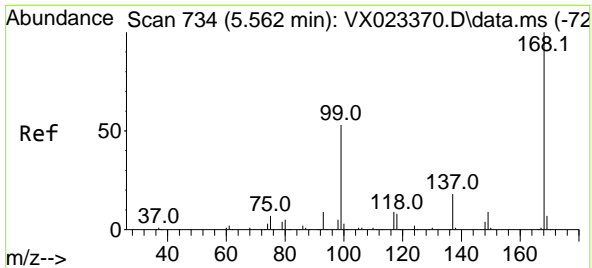
(#) = qualifier out of range (m) = manual integration (+) = signals summed

Data Path : Z:\voasrv\HPCHEM1\MSVOA\_X\Data\VX080921\  
 Data File : VX023619.D  
 Acq On : 09 Aug 2021 17:35  
 Operator : JC/MD  
 Sample : M3276-02  
 Misc : 5.0mL/MSVOA\_X/WATER  
 ALS Vial : 19 Sample Multiplier: 1

Instrument :  
 MSVOA\_X  
 ClientSampleId :

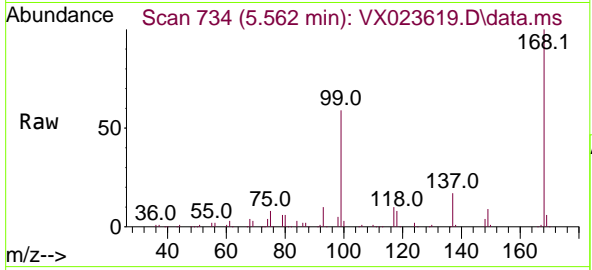
Quant Time: Aug 10 04:04:21 2021  
 Quant Method : Z:\voasrv\HPCHEM1\MSVOA\_X\Method\82X072221W.M  
 Quant Title : SW846 8260  
 QLast Update : Fri Jul 23 06:05:38 2021  
 Response via : Initial Calibration



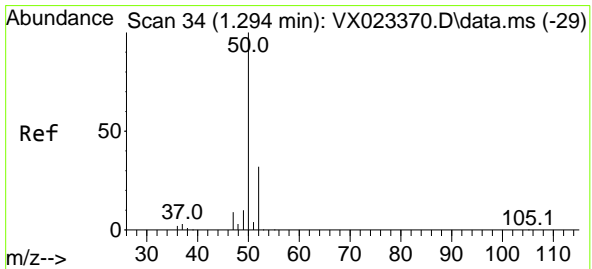
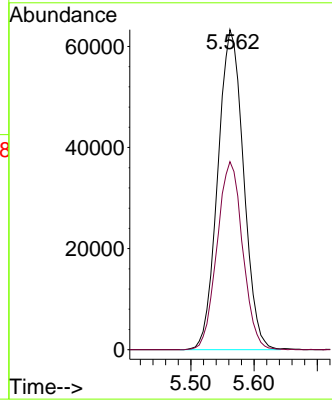
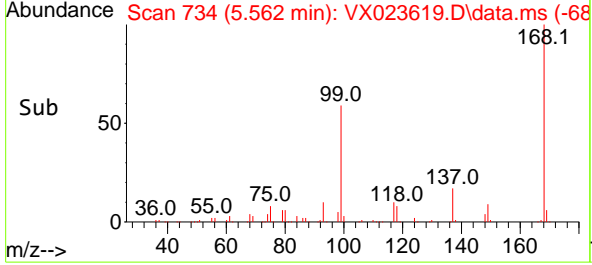


#1  
 Pentafluorobenzene  
 Concen: 50.00 ug/l  
 RT: 5.562 min Scan# 734  
 Delta R.T. -0.000 min  
 Lab File: VX023619.D  
 Acq: 09 Aug 2021 17:35

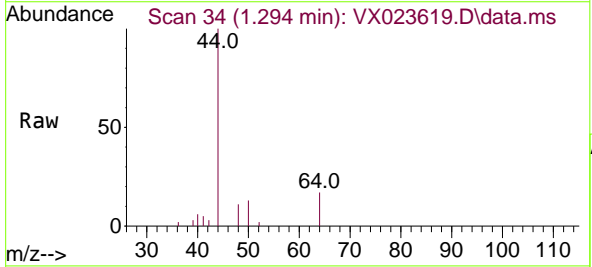
Instrument :  
 MSVOA\_X  
 ClientSampleId :



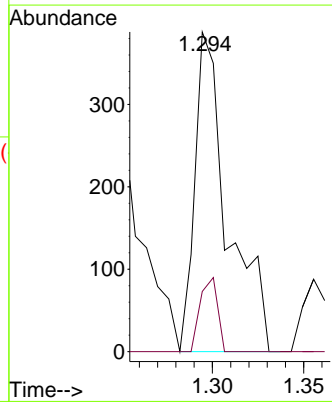
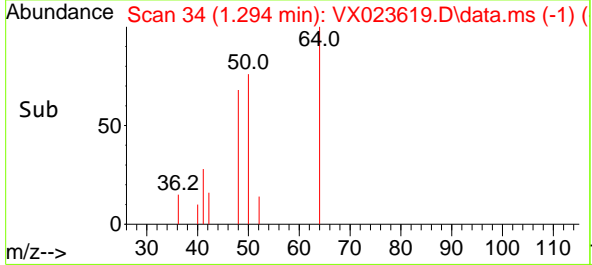
Tgt Ion:168 Resp: 178921  
 Ion Ratio Lower Upper  
 168 100  
 99 58.7 45.8 68.6

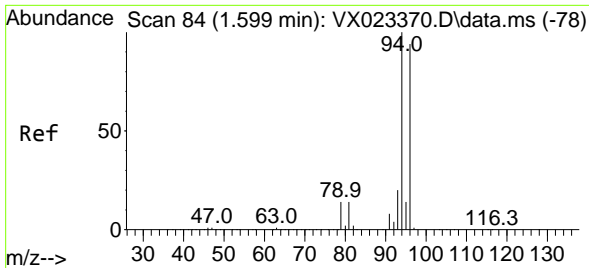


#3  
 Chloromethane  
 Concen: 0.25 ug/l  
 RT: 1.294 min Scan# 34  
 Delta R.T. 0.000 min  
 Lab File: VX023619.D  
 Acq: 09 Aug 2021 17:35



Tgt Ion: 50 Resp: 486  
 Ion Ratio Lower Upper  
 50 100  
 52 18.8 26.4 39.6#

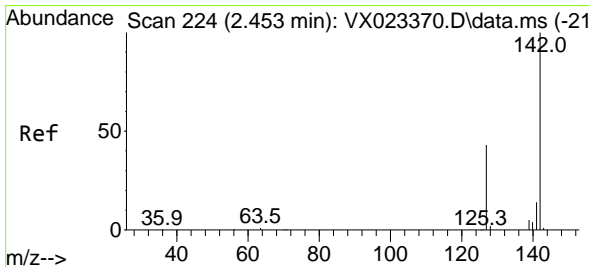
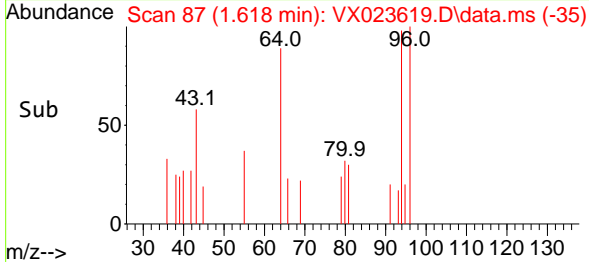
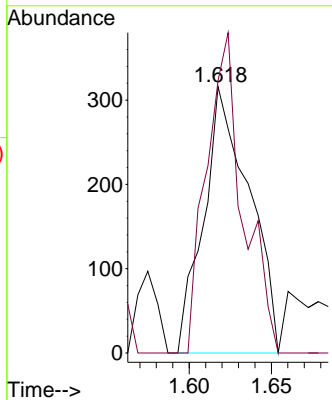
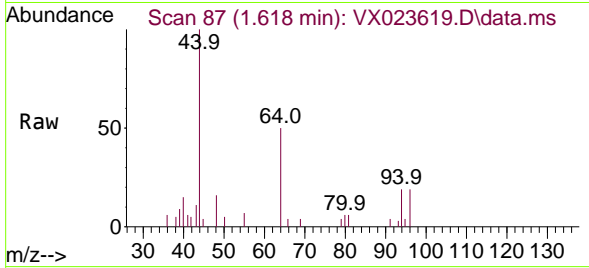




#5  
 Bromomethane  
 Concen: 0.53 ug/l  
 RT: 1.618 min Scan# 87  
 Delta R.T. 0.019 min  
 Lab File: VX023619.D  
 Acq: 09 Aug 2021 17:35

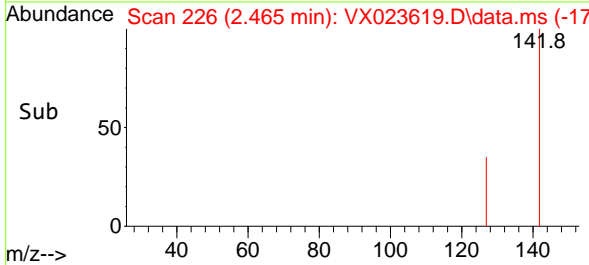
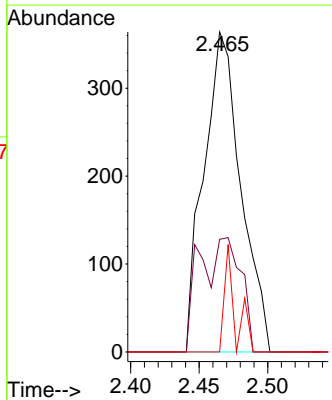
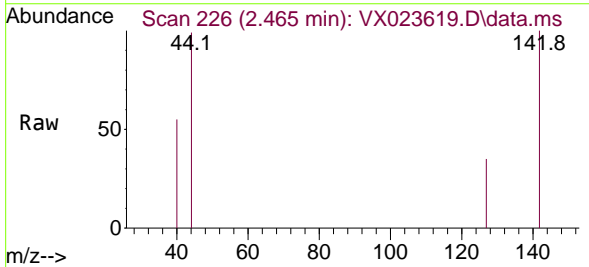
Instrument :  
 MSVOA\_X  
 ClientSampled :

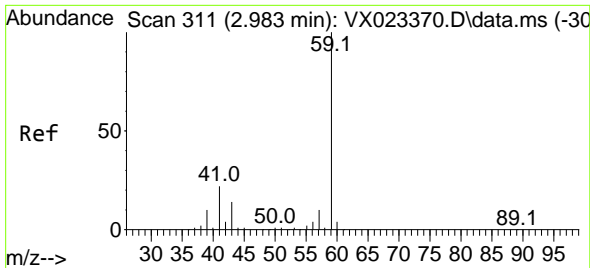
Tgt Ion: 94 Resp: 610  
 Ion Ratio Lower Upper  
 94 100  
 96 102.2 76.4 114.6



#10  
 Methyl Iodide  
 Concen: 0.31 ug/l  
 RT: 2.465 min Scan# 226  
 Delta R.T. 0.012 min  
 Lab File: VX023619.D  
 Acq: 09 Aug 2021 17:35

Tgt Ion:142 Resp: 684  
 Ion Ratio Lower Upper  
 142 100  
 127 23.7 33.3 49.9#  
 141 9.8 11.4 17.0#

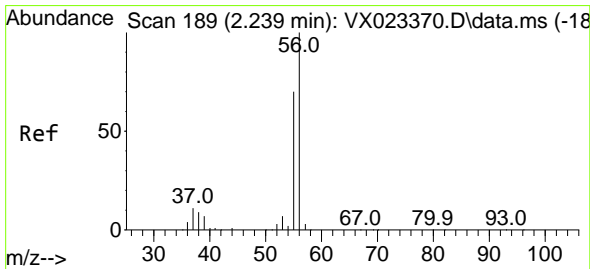
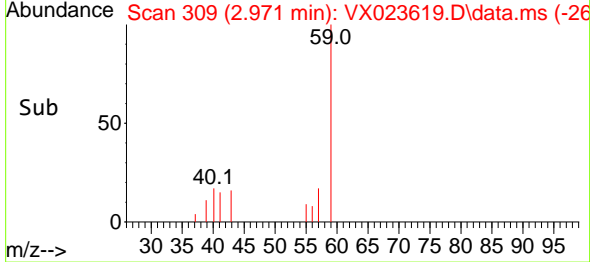
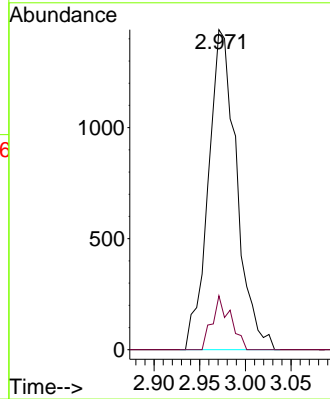
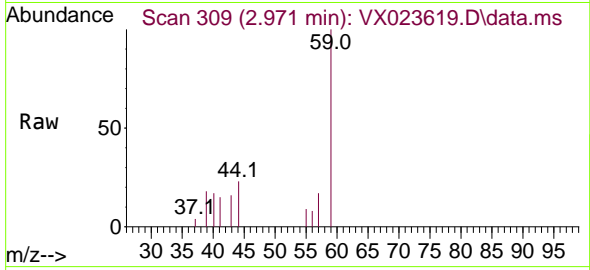




#11  
 Tert butyl alcohol  
 Concen: 6.09 ug/l  
 RT: 2.971 min Scan# 309  
 Delta R.T. -0.012 min  
 Lab File: VX023619.D  
 Acq: 09 Aug 2021 17:35

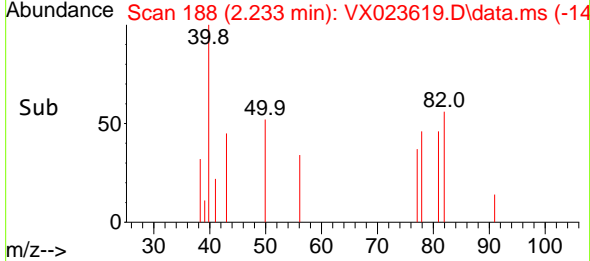
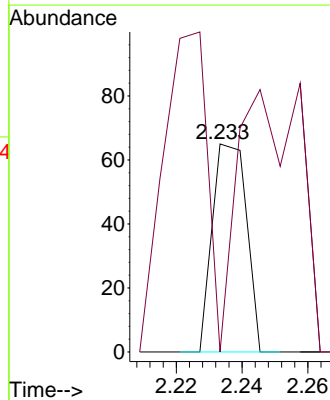
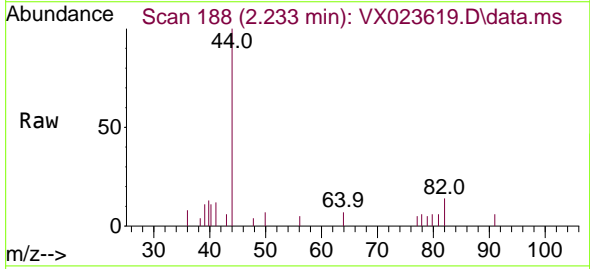
Instrument :  
 MSVOA\_X  
 ClientSampleId :

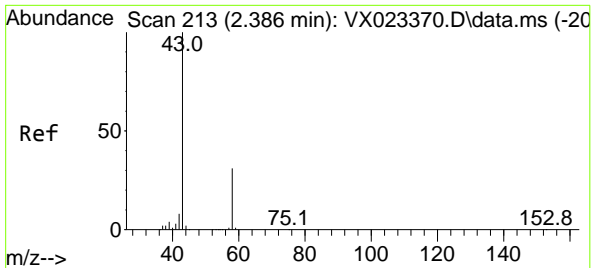
Tgt Ion: 59 Resp: 3104  
 Ion Ratio Lower Upper  
 59 100  
 57 11.0 7.8 11.8



#13  
 Acrolein  
 Concen: 1.54 ug/l  
 RT: 2.233 min Scan# 188  
 Delta R.T. -0.006 min  
 Lab File: VX023619.D  
 Acq: 09 Aug 2021 17:35

Tgt Ion: 56 Resp: 47  
 Ion Ratio Lower Upper  
 56 100  
 55 195.7 56.4 84.6#

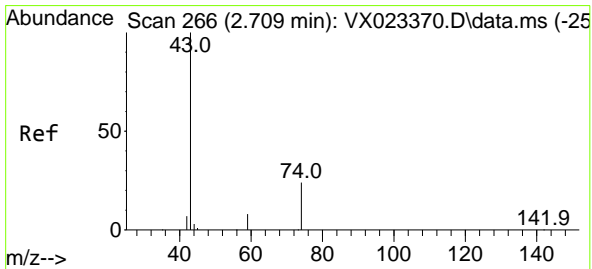
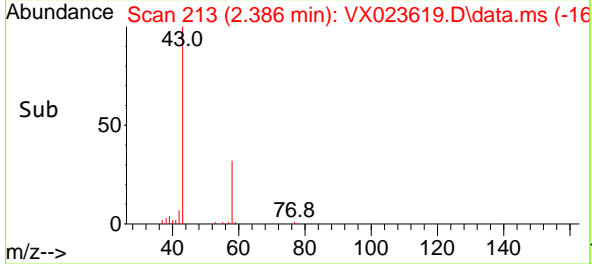
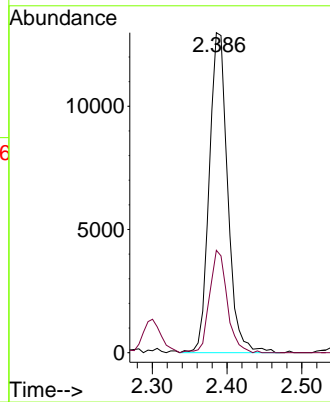
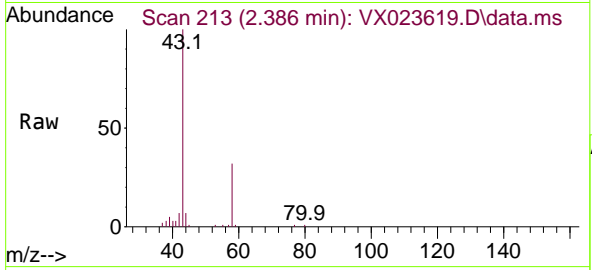




#16  
 Acetone  
 Concen: 20.36 ug/l  
 RT: 2.386 min Scan# 213  
 Delta R.T. -0.000 min  
 Lab File: VX023619.D  
 Acq: 09 Aug 2021 17:35

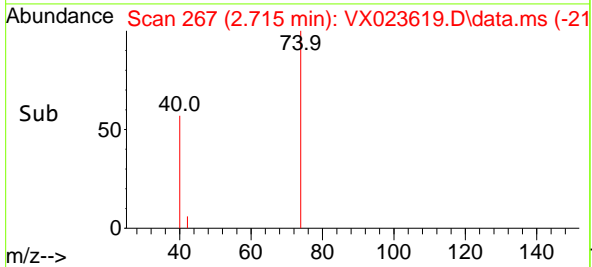
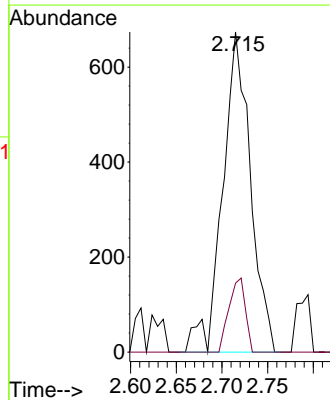
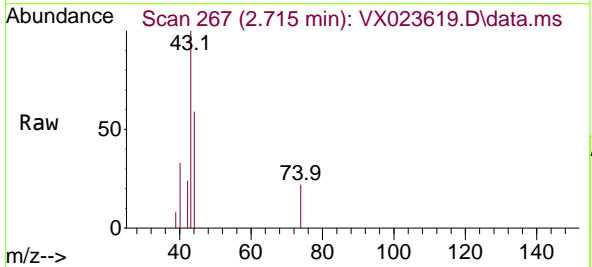
Instrument :  
 MSVOA\_X  
 ClientSampled :

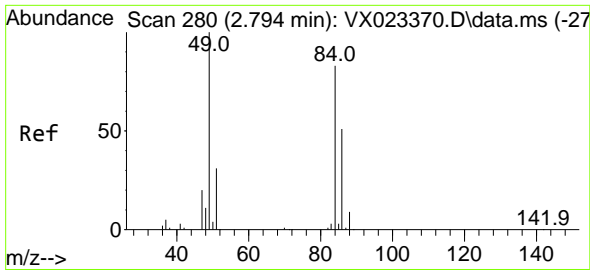
Tgt Ion: 43 Resp: 22296  
 Ion Ratio Lower Upper  
 43 100  
 58 32.0 27.8 41.8



#18  
 Methyl Acetate  
 Concen: 0.55 ug/l  
 RT: 2.715 min Scan# 267  
 Delta R.T. 0.006 min  
 Lab File: VX023619.D  
 Acq: 09 Aug 2021 17:35

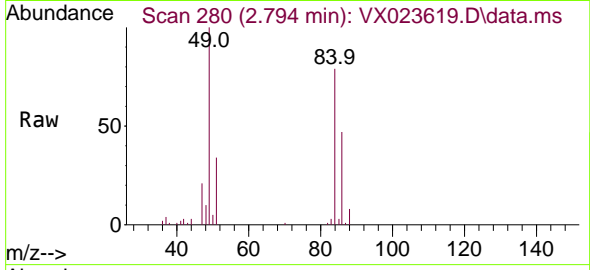
Tgt Ion: 43 Resp: 1429  
 Ion Ratio Lower Upper  
 43 100  
 74 13.6 21.9 32.9#





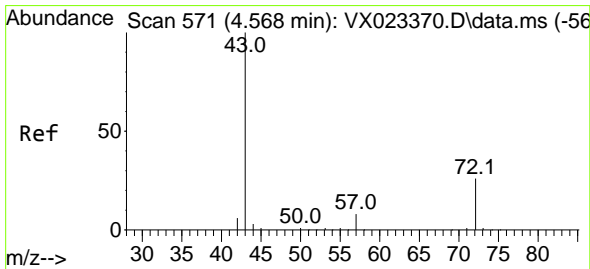
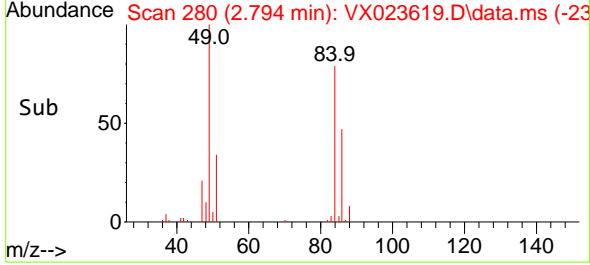
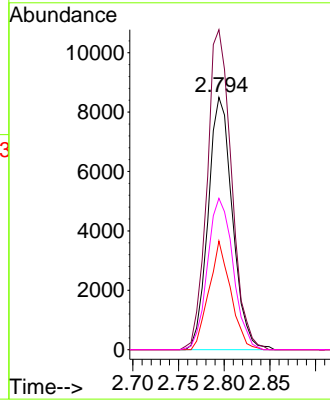
#20  
 Methylene Chloride  
 Concen: 7.37 ug/l  
 RT: 2.794 min Scan# 280  
 Delta R.T. 0.000 min  
 Lab File: VX023619.D  
 Acq: 09 Aug 2021 17:35

Instrument :  
 MSVOA\_X  
 ClientSampled :

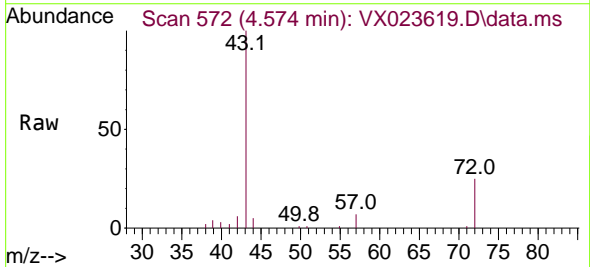


Tgt Ion: 84 Resp: 15689

Ion	Ratio	Lower	Upper
84	100		
49	126.8	88.6	132.8
51	43.1	27.0	40.6#
86	60.0	50.3	75.5

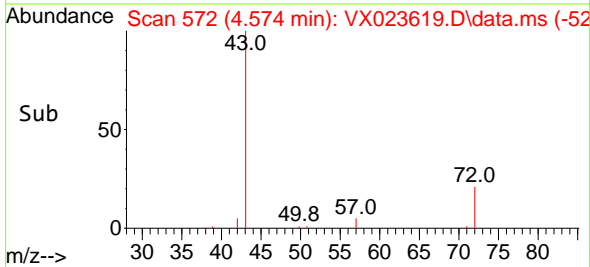
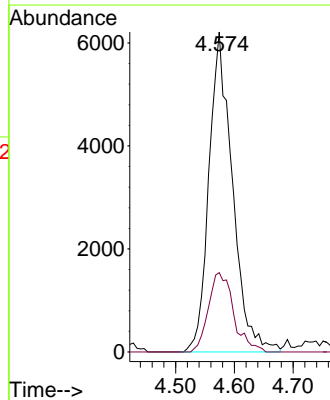


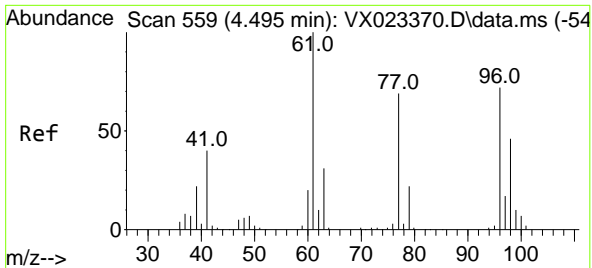
#25  
 2-Butanone  
 Concen: 10.15 ug/l  
 RT: 4.574 min Scan# 572  
 Delta R.T. 0.006 min  
 Lab File: VX023619.D  
 Acq: 09 Aug 2021 17:35



Tgt Ion: 43 Resp: 17246

Ion	Ratio	Lower	Upper
43	100		
72	24.8	23.7	35.5

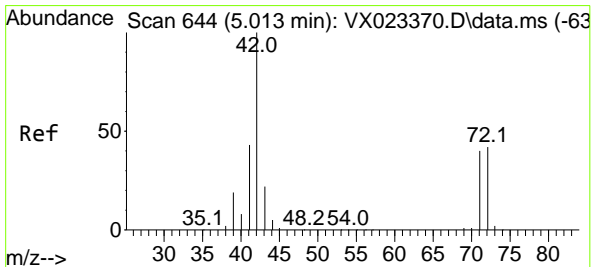
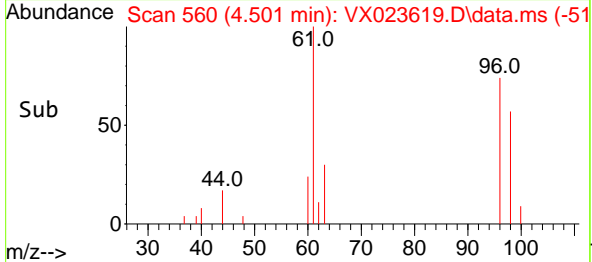
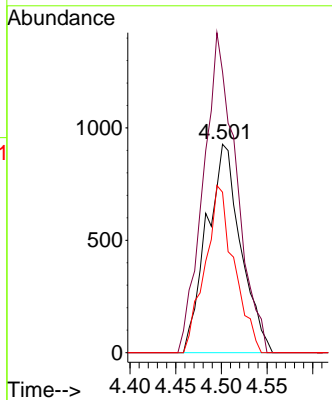
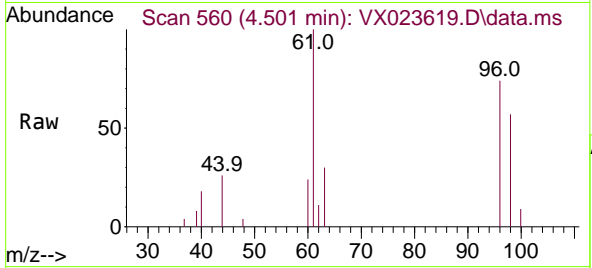




#27  
 cis-1,2-Dichloroethene  
 Concen: 1.11 ug/l  
 RT: 4.501 min Scan# 560  
 Delta R.T. 0.006 min  
 Lab File: VX023619.D  
 Acq: 09 Aug 2021 17:35

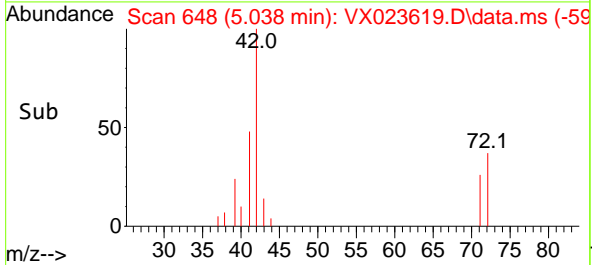
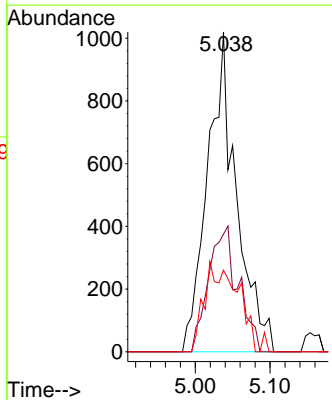
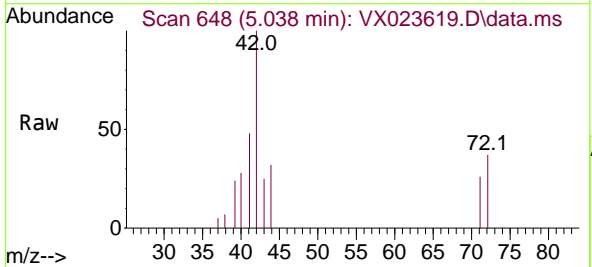
Instrument :  
 MSVOA\_X  
 ClientSampleId :

Tgt Ion	Resp	Lower	Upper
96	100		
61	147.6	0.0	285.6
98	68.1	0.0	129.6

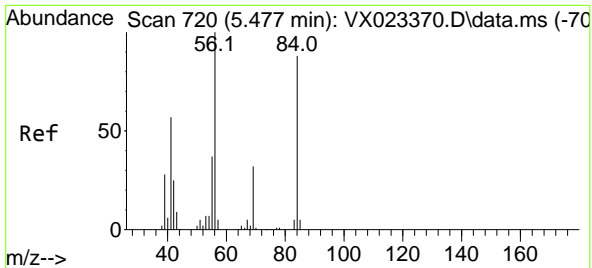


#29  
 Tetrahydrofuran  
 Concen: 2.47 ug/l  
 RT: 5.038 min Scan# 648  
 Delta R.T. 0.025 min  
 Lab File: VX023619.D  
 Acq: 09 Aug 2021 17:35

Tgt Ion	Resp	Lower	Upper
42	100		
72	40.1	41.7	62.5#
71	0.0	38.4	57.6#



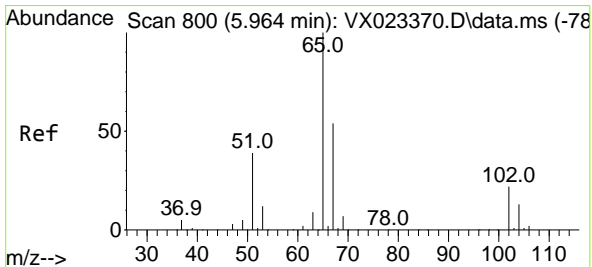
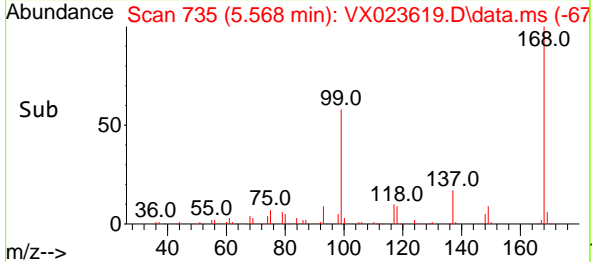
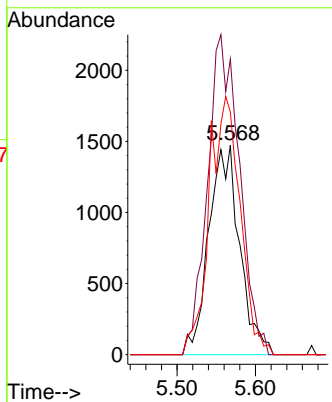
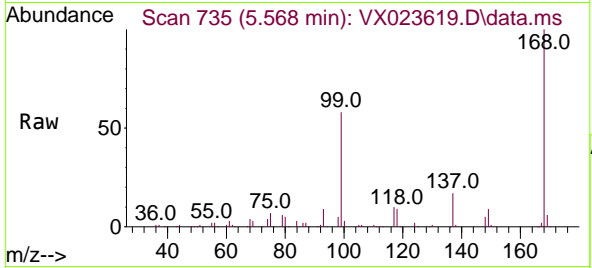




#31  
 Cyclohexane  
 Concen: 1.22 ug/l  
 RT: 5.568 min Scan# 735  
 Delta R.T. 0.091 min  
 Lab File: VX023619.D  
 Acq: 09 Aug 2021 17:35

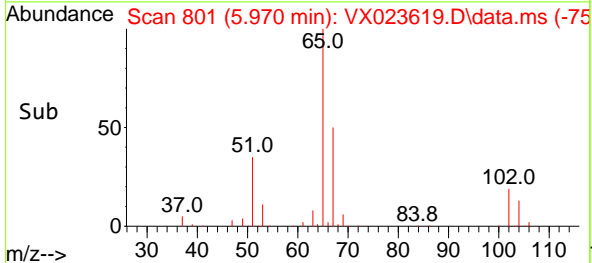
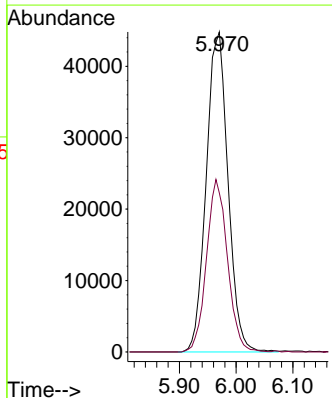
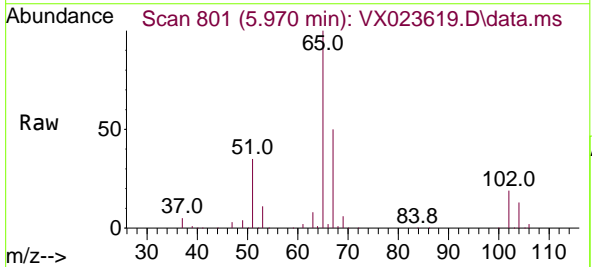
Instrument :  
 MSVOA\_X  
 ClientSampled :

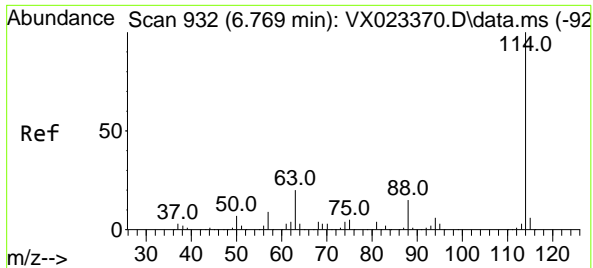
Tgt Ion	Resp	Lower	Upper
56	100		
69	141.1	25.3	37.9#
84	115.7	71.4	107.0#



#33  
 1,2-Dichloroethane-d4  
 Concen: 53.52 ug/l  
 RT: 5.970 min Scan# 801  
 Delta R.T. 0.006 min  
 Lab File: VX023619.D  
 Acq: 09 Aug 2021 17:35

Tgt Ion	Resp	Lower	Upper
65	100		
67	52.0	0.0	105.4



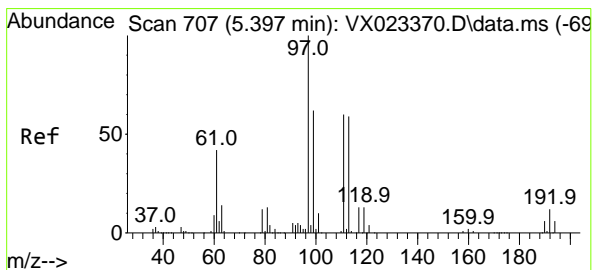
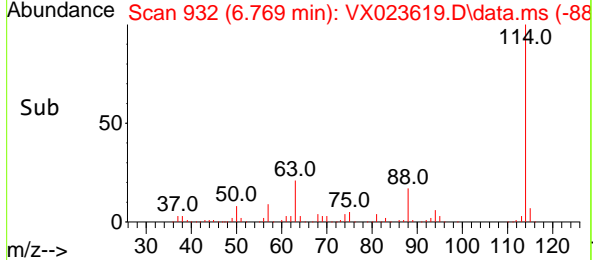
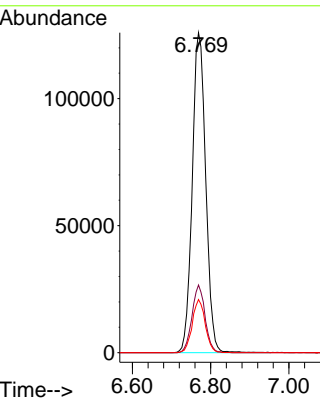
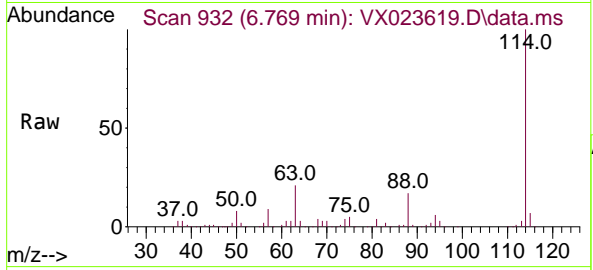


#34  
 1,4-Difluorobenzene  
 Concen: 50.00 ug/l  
 RT: 6.769 min Scan# 932  
 Delta R.T. 0.000 min  
 Lab File: VX023619.D  
 Acq: 09 Aug 2021 17:35

Instrument :  
 MSVOA\_X  
 ClientSampleId :

Tgt Ion:114 Resp: 301172

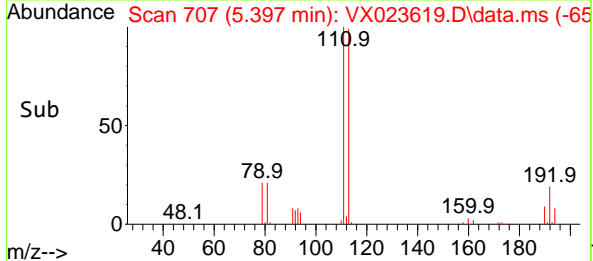
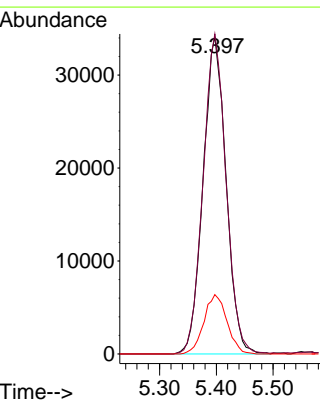
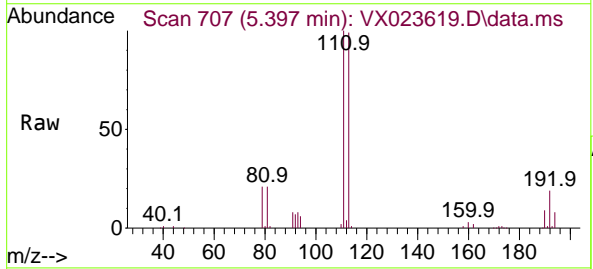
Ion	Ratio	Lower	Upper
114	100		
63	21.2	0.0	40.8
88	16.6	0.0	32.8

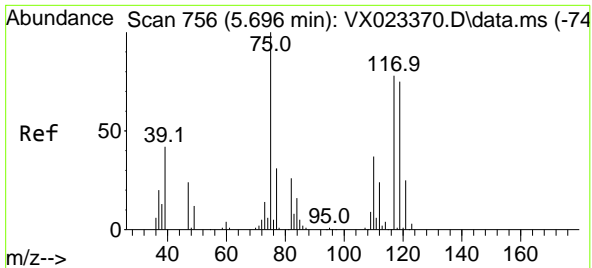


#35  
 Dibromofluoromethane  
 Concen: 50.87 ug/l  
 RT: 5.397 min Scan# 707  
 Delta R.T. 0.000 min  
 Lab File: VX023619.D  
 Acq: 09 Aug 2021 17:35

Tgt Ion:113 Resp: 95798

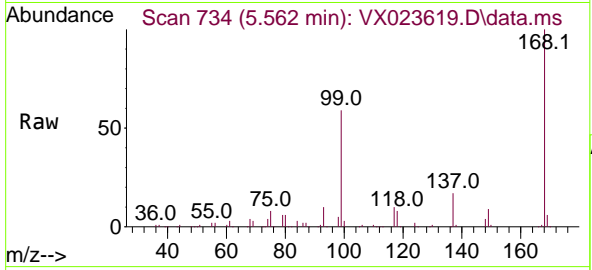
Ion	Ratio	Lower	Upper
113	100		
111	101.3	81.9	122.9
192	18.8	16.7	25.1





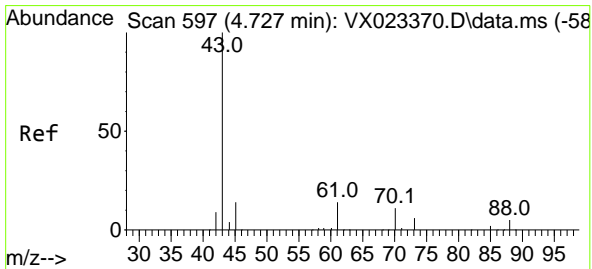
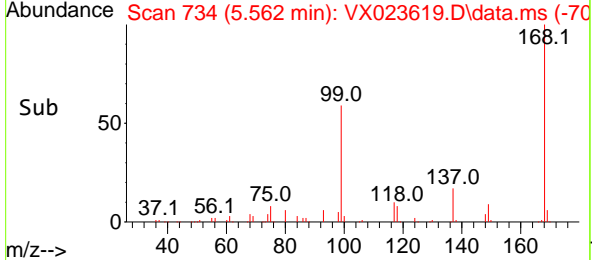
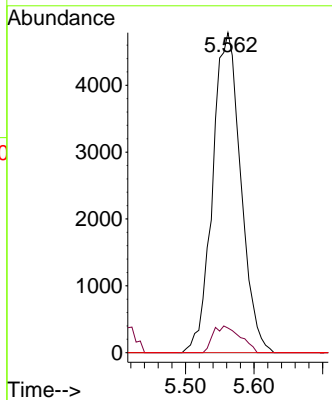
#36  
 1,1-Dichloropropene  
 Concen: 5.02 ug/l  
 RT: 5.562 min Scan# 734  
 Delta R.T. -0.134 min  
 Lab File: VX023619.D  
 Acq: 09 Aug 2021 17:35

Instrument :  
 MSVOA\_X  
 ClientSampled :

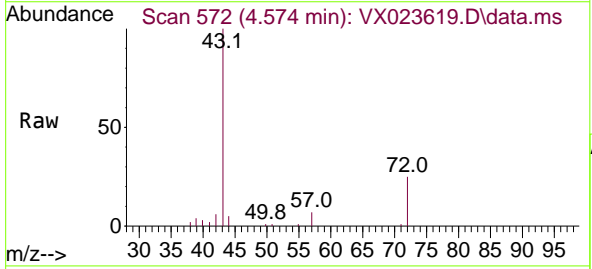


Tgt Ion: 75 Resp: 13663

Ion	Ratio	Lower	Upper
75	100		
110	8.1	18.1	54.4#
77	0.0	25.3	37.9#

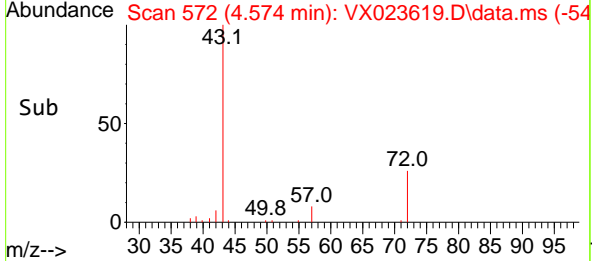
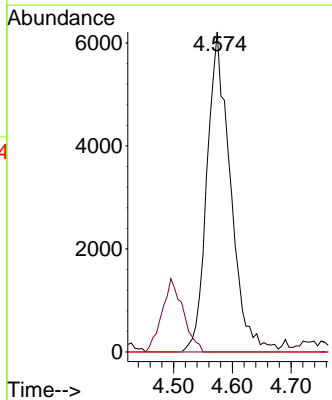


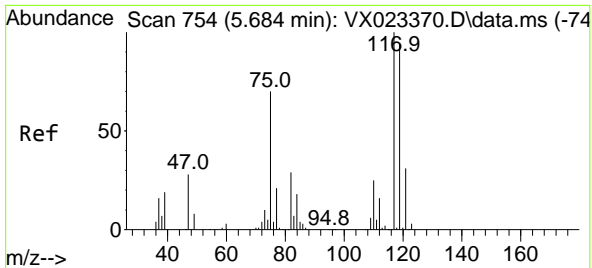
#37  
 Ethyl Acetate  
 Concen: 5.02 ug/l  
 RT: 4.574 min Scan# 572  
 Delta R.T. -0.153 min  
 Lab File: VX023619.D  
 Acq: 09 Aug 2021 17:35



Tgt Ion: 43 Resp: 17246

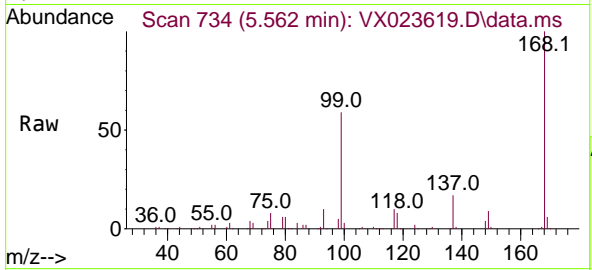
Ion	Ratio	Lower	Upper
43	100		
61	0.0	12.8	19.2#
70	0.0	10.5	15.7#



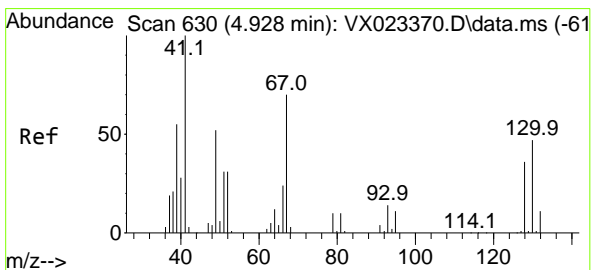
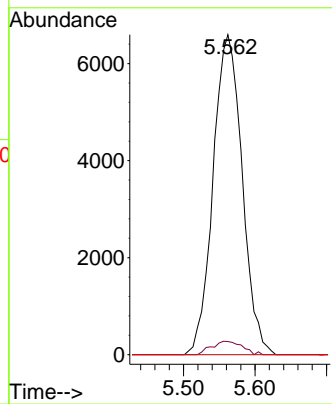
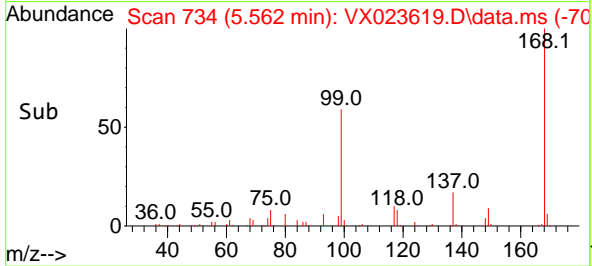


#38  
 Carbon Tetrachloride  
 Concen: 6.72 ug/l  
 RT: 5.562 min Scan# 734  
 Delta R.T. -0.122 min  
 Lab File: VX023619.D  
 Acq: 09 Aug 2021 17:35

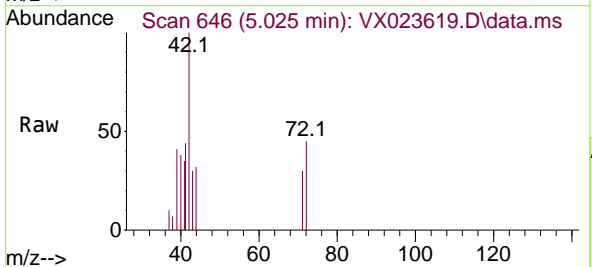
Instrument :  
 MSVOA\_X  
 ClientSampleId :



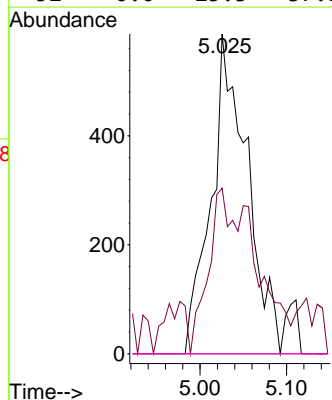
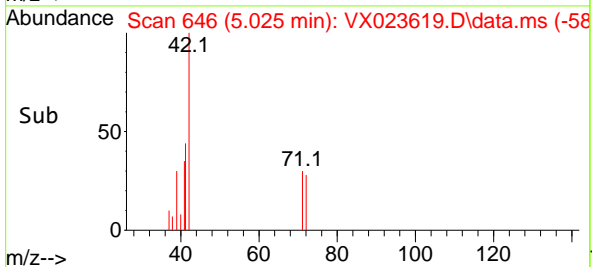
Tgt Ion: 117 Resp: 18607  
 Ion Ratio Lower Upper  
 117 100  
 119 4.1 76.2 114.2#  
 121 0.0 24.8 37.2#

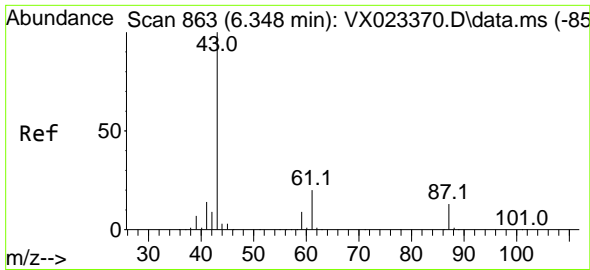


#41  
 Methacrylonitrile  
 Concen: 0.94 ug/l  
 RT: 5.025 min Scan# 646  
 Delta R.T. 0.097 min  
 Lab File: VX023619.D  
 Acq: 09 Aug 2021 17:35



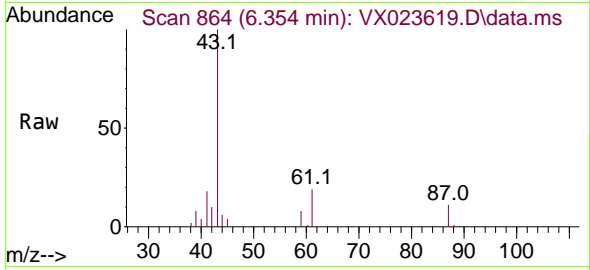
Tgt Ion: 41 Resp: 1697  
 Ion Ratio Lower Upper  
 41 100  
 39 38.2 42.5 63.7#  
 67 0.0 65.0 97.6#  
 52 0.0 25.3 37.9#





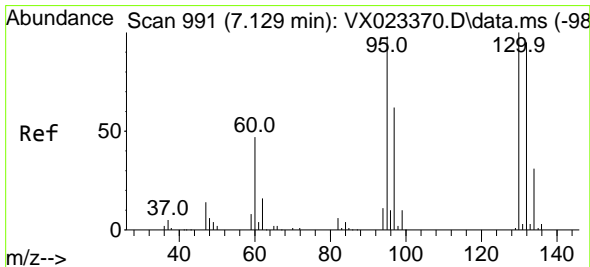
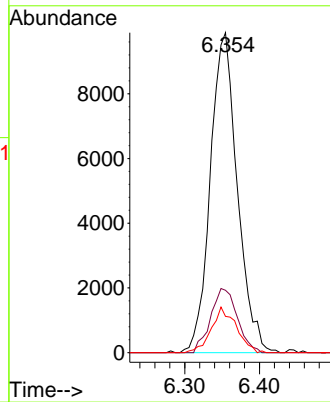
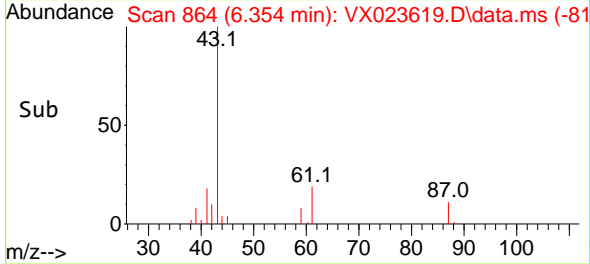
#43  
 Isopropyl Acetate  
 Concen: 4.67 ug/l  
 RT: 6.354 min Scan# 864  
 Delta R.T. 0.006 min  
 Lab File: VX023619.D  
 Acq: 09 Aug 2021 17:35

Instrument :  
 MSVOA\_X  
 ClientSampled :

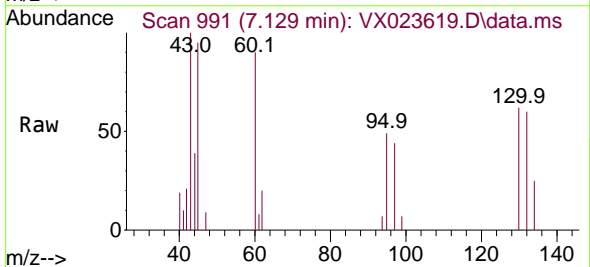


Tgt Ion: 43 Resp: 24868

Ion	Ratio	Lower	Upper
43	100		
61	19.8	18.2	27.4
87	13.1	12.5	18.7

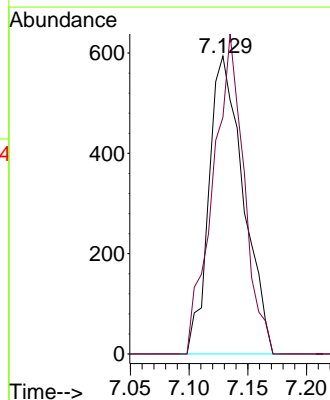
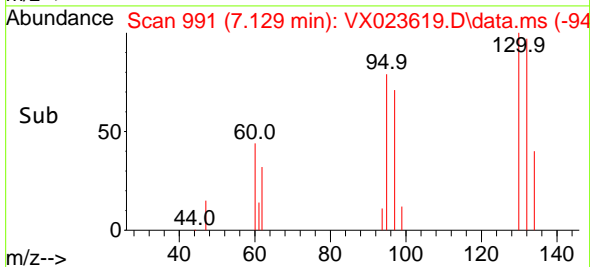


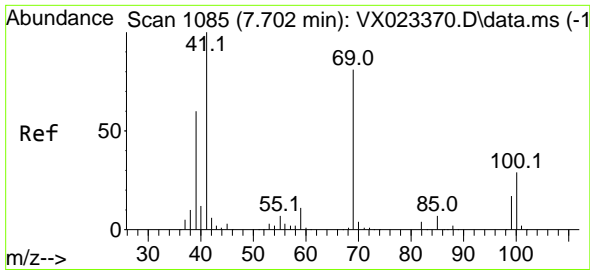
#44  
 Trichloroethene  
 Concen: 0.55 ug/l  
 RT: 7.129 min Scan# 991  
 Delta R.T. -0.000 min  
 Lab File: VX023619.D  
 Acq: 09 Aug 2021 17:35



Tgt Ion: 130 Resp: 1212

Ion	Ratio	Lower	Upper
130	100		
95	79.5	0.0	198.0

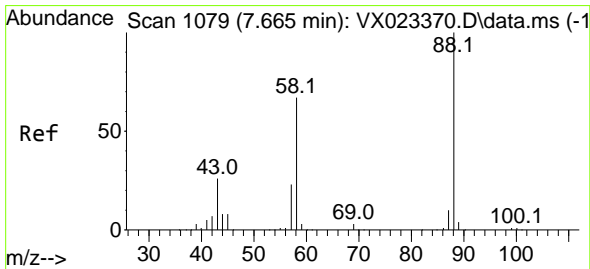
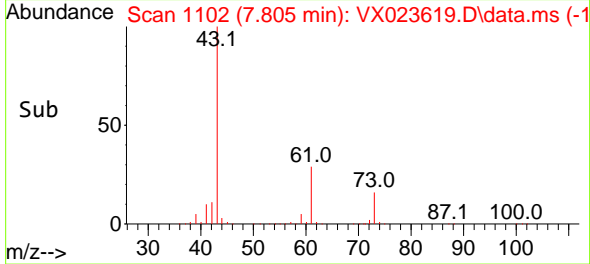
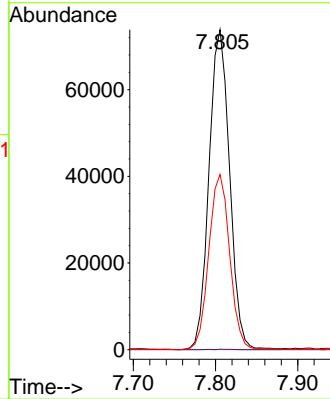
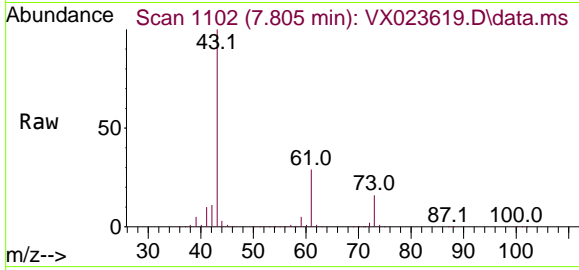




#48  
 Methyl methacrylate  
 Concen: 52.11 ug/l  
 RT: 7.805 min Scan# 1102  
 Delta R.T. 0.103 min  
 Lab File: VX023619.D  
 Acq: 09 Aug 2021 17:35

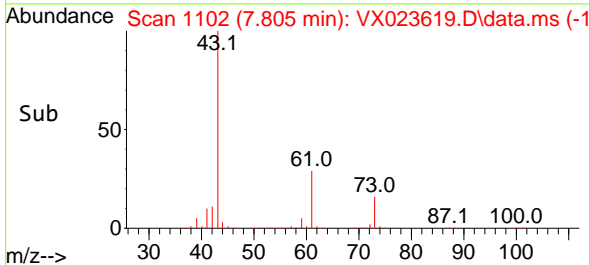
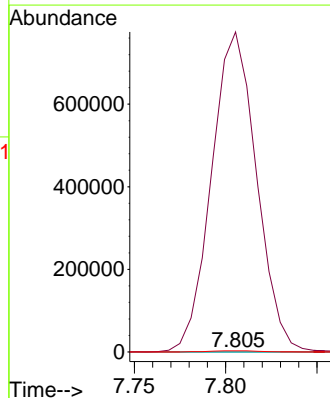
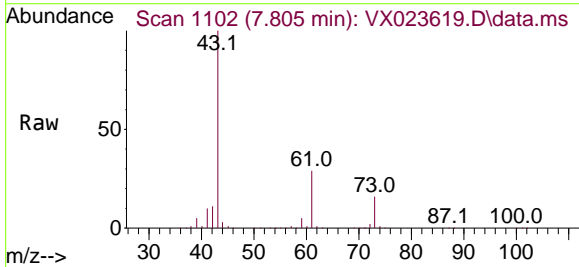
Instrument :  
 MSVOA\_X  
 ClientSampled :

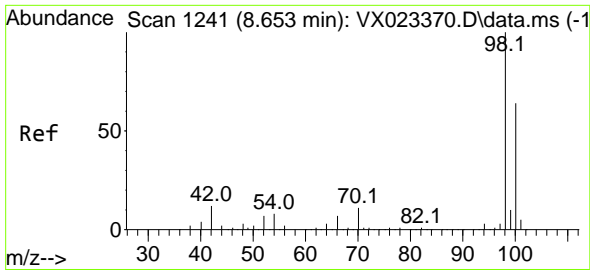
Tgt Ion: 41 Resp: 128461  
 Ion Ratio Lower Upper  
 41 100  
 69 0.1 76.0 114.0#  
 39 55.7 44.6 67.0



#49  
 1,4-Dioxane  
 Concen: 4.71 ug/l  
 RT: 7.805 min Scan# 1102  
 Delta R.T. 0.140 min  
 Lab File: VX023619.D  
 Acq: 09 Aug 2021 17:35

Tgt Ion: 88 Resp: 247  
 Ion Ratio Lower Upper  
 88 100  
 43 540789.9 23.2 34.8#  
 58 2211.3 55.0 82.4#

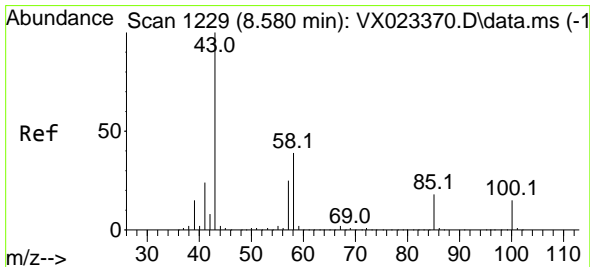
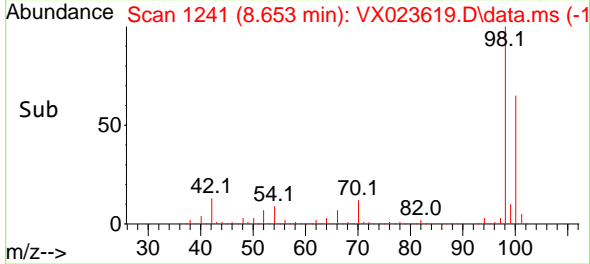
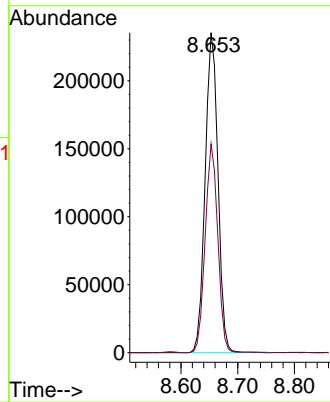
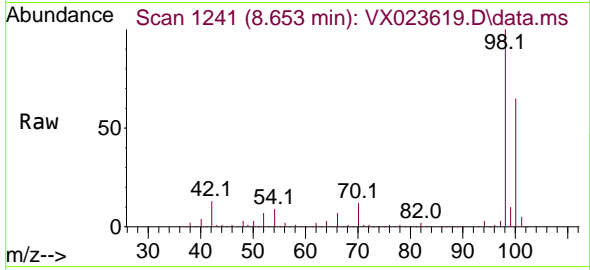




#50  
 Toluene-d8  
 Concen: 53.40 ug/l  
 RT: 8.653 min Scan# 1241  
 Delta R.T. -0.000 min  
 Lab File: VX023619.D  
 Acq: 09 Aug 2021 17:35

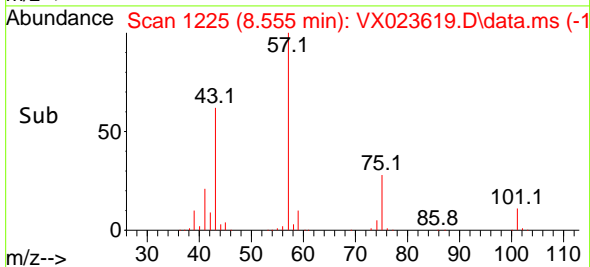
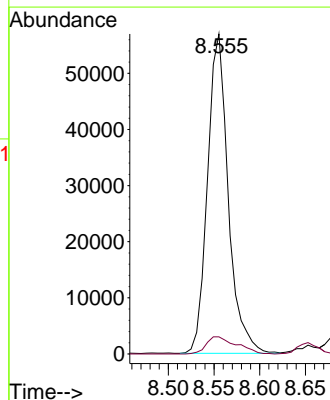
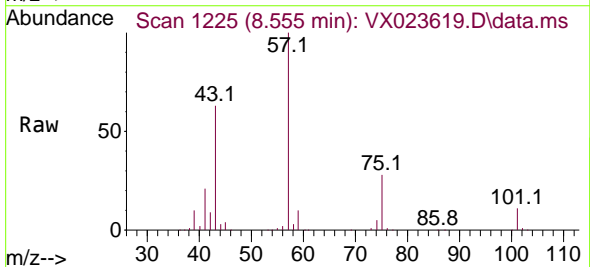
Instrument :  
 MSVOA\_X  
 ClientSampled :

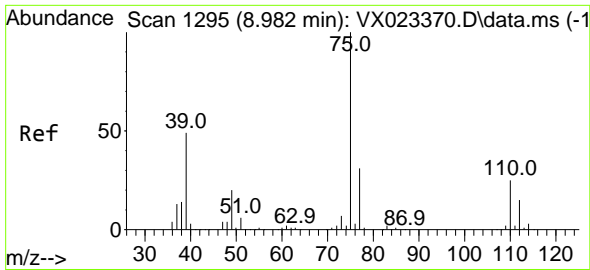
Tgt Ion: 98 Resp: 369461  
 Ion Ratio Lower Upper  
 98 100  
 100 64.3 51.9 77.9



#51  
 4-Methyl-2-Pentanone  
 Concen: 27.54 ug/l  
 RT: 8.555 min Scan# 1225  
 Delta R.T. -0.025 min  
 Lab File: VX023619.D  
 Acq: 09 Aug 2021 17:35

Tgt Ion: 43 Resp: 89676  
 Ion Ratio Lower Upper  
 43 100  
 58 7.9 35.4 53.0#

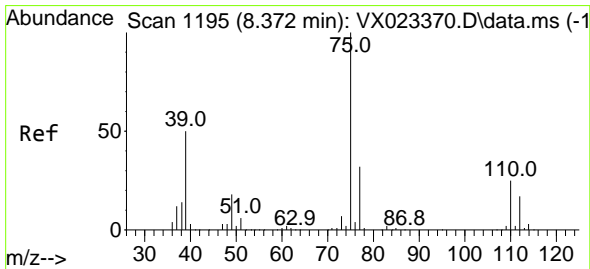
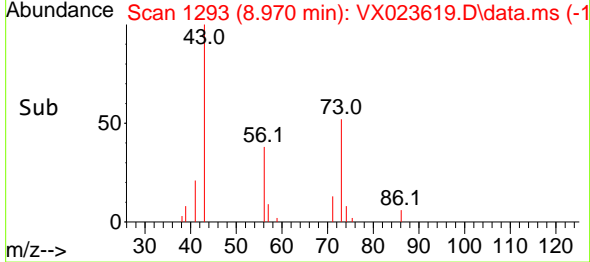
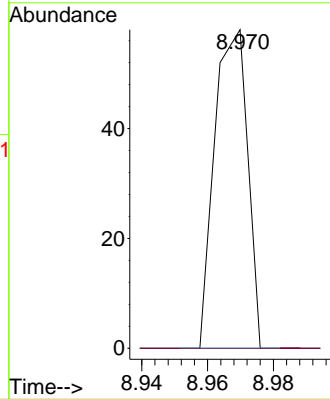
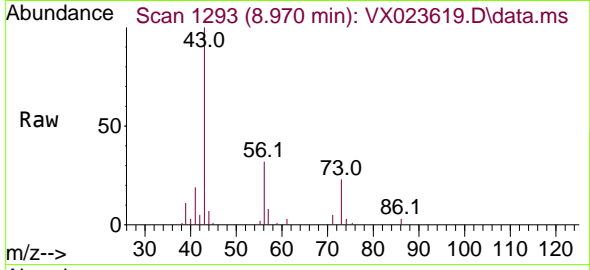




#53  
 t-1,3-Dichloropropene  
 Concen: 1.83 ug/l  
 RT: 8.970 min Scan# 1293  
 Delta R.T. -0.012 min  
 Lab File: VX023619.D  
 Acq: 09 Aug 2021 17:35

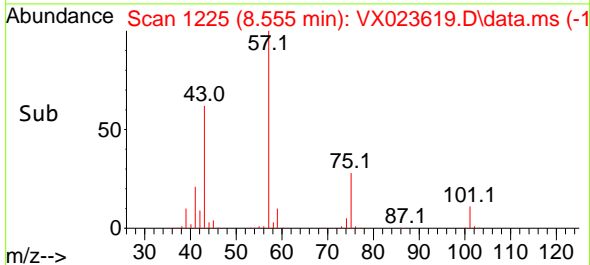
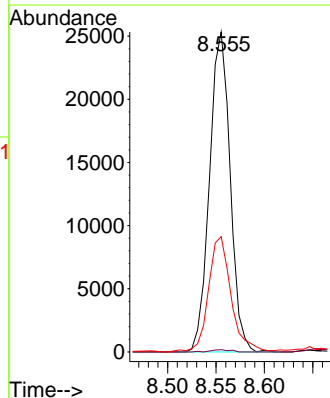
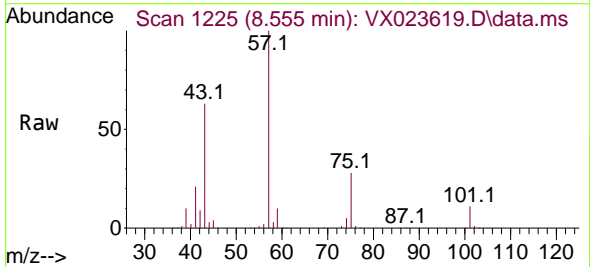
Instrument :  
 MSVOA\_X  
 ClientSampled :

Tgt Ion: 75 Resp: 40  
 Ion Ratio Lower Upper  
 75 100  
 77 0.0 24.9 37.3#

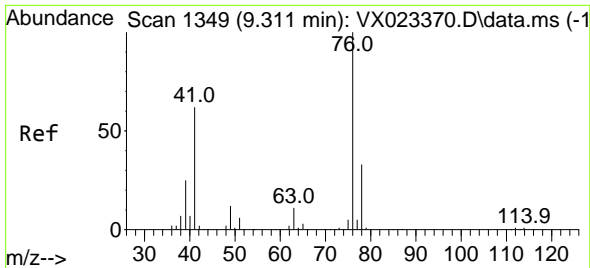


#54  
 cis-1,3-Dichloropropene  
 Concen: 11.55 ug/l  
 RT: 8.555 min Scan# 1225  
 Delta R.T. 0.183 min  
 Lab File: VX023619.D  
 Acq: 09 Aug 2021 17:35

Tgt Ion: 75 Resp: 37622  
 Ion Ratio Lower Upper  
 75 100  
 77 0.7 25.7 38.5#  
 39 35.4 35.1 52.7



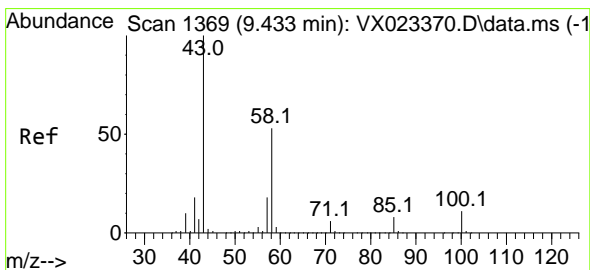
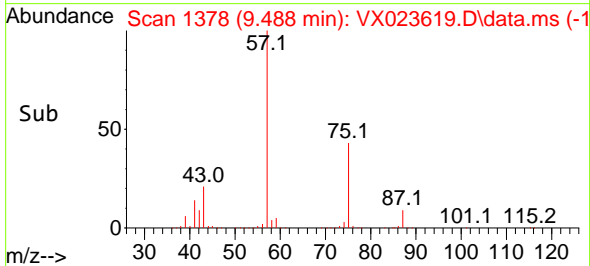
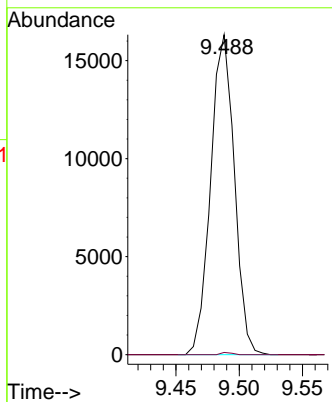
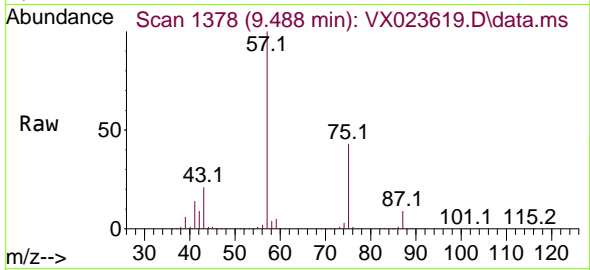




#57  
 1,3-Dichloropropane  
 Concen: 6.18 ug/l  
 RT: 9.488 min Scan# 1378  
 Delta R.T. 0.177 min  
 Lab File: VX023619.D  
 Acq: 09 Aug 2021 17:35

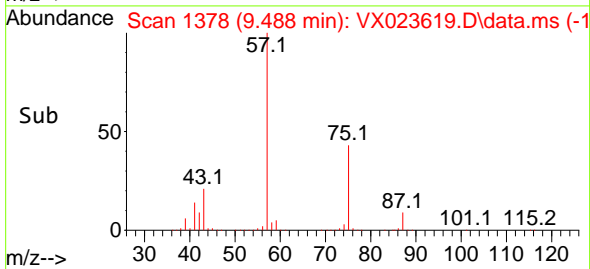
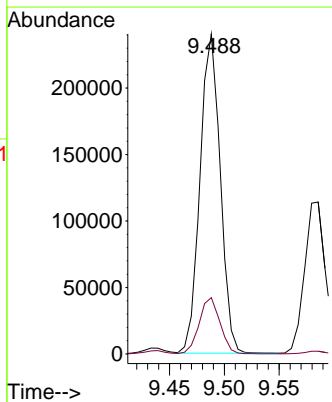
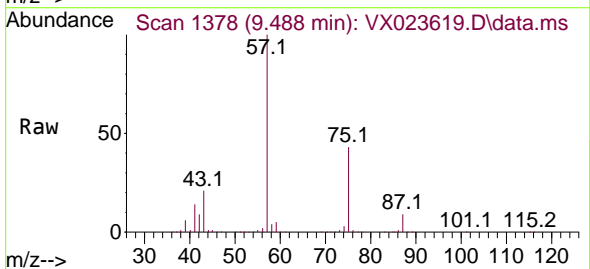
Instrument :  
 MSVOA\_X  
 ClientSampled :

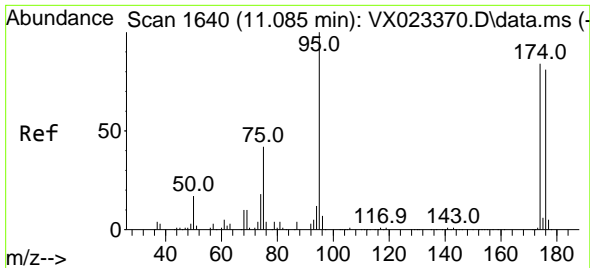
Tgt Ion: 76 Resp: 21268  
 Ion Ratio Lower Upper  
 76 100  
 78 0.3 26.2 39.2#



#59  
 2-Hexanone  
 Concen: 124.45 ug/l  
 RT: 9.488 min Scan# 1378  
 Delta R.T. 0.055 min  
 Lab File: VX023619.D  
 Acq: 09 Aug 2021 17:35

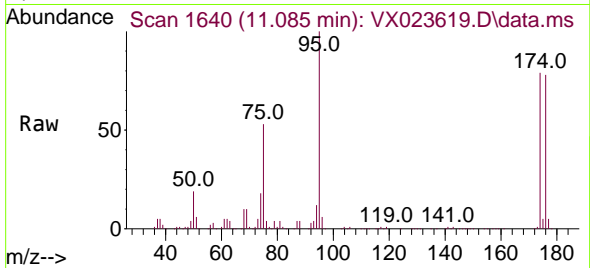
Tgt Ion: 43 Resp: 307688  
 Ion Ratio Lower Upper  
 43 100  
 58 18.2 30.9 92.8#



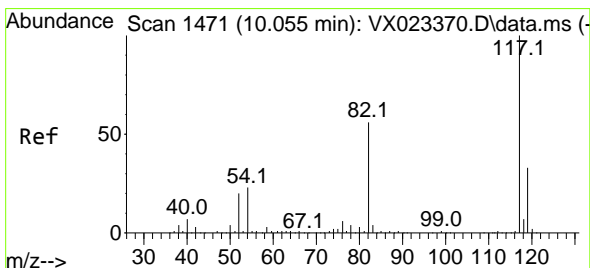
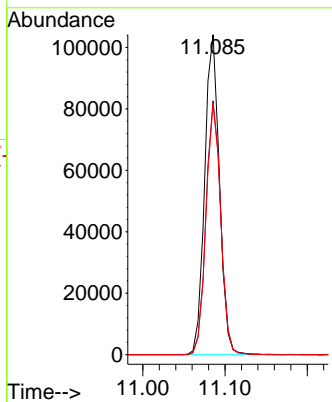
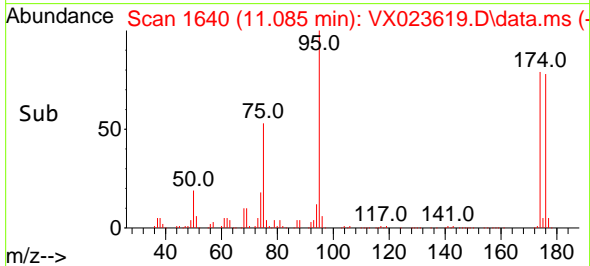


#62  
 4-Bromofluorobenzene  
 Concen: 55.06 ug/l  
 RT: 11.085 min Scan# 1640  
 Delta R.T. 0.000 min  
 Lab File: VX023619.D  
 Acq: 09 Aug 2021 17:35

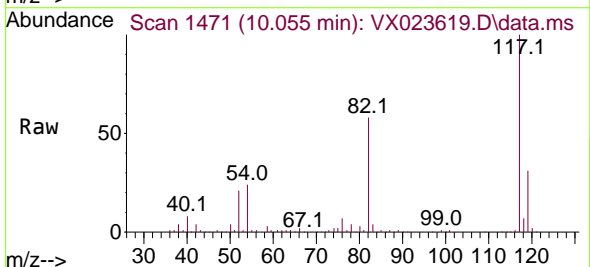
Instrument :  
 MSVOA\_X  
 ClientSampled :



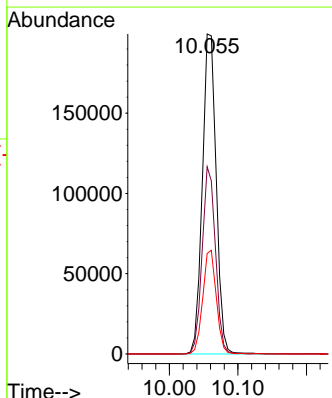
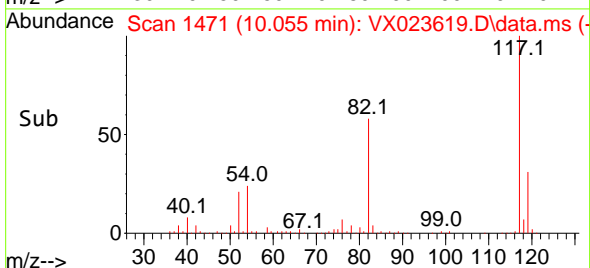
Tgt Ion: 95 Resp: 129537  
 Ion Ratio Lower Upper  
 95 100  
 174 79.6 0.0 154.6  
 176 77.9 0.0 155.8

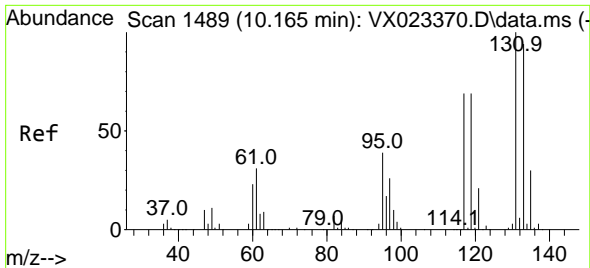


#63  
 Chlorobenzene-d5  
 Concen: 50.00 ug/l  
 RT: 10.055 min Scan# 1471  
 Delta R.T. 0.000 min  
 Lab File: VX023619.D  
 Acq: 09 Aug 2021 17:35



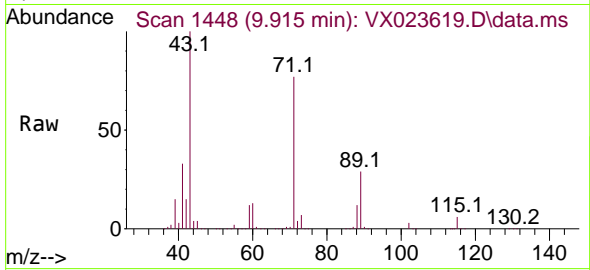
Tgt Ion: 117 Resp: 280857  
 Ion Ratio Lower Upper  
 117 100  
 82 58.5 47.4 71.2  
 119 31.4 26.6 39.8



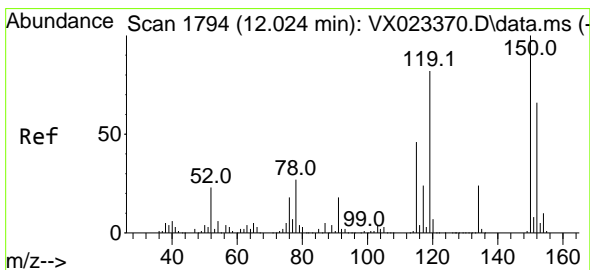
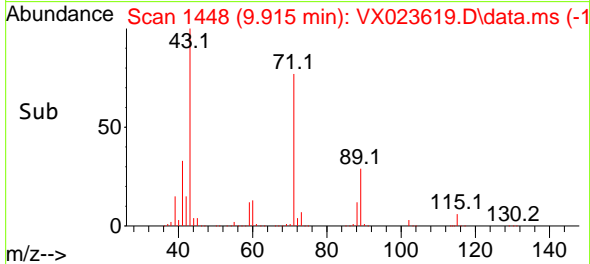
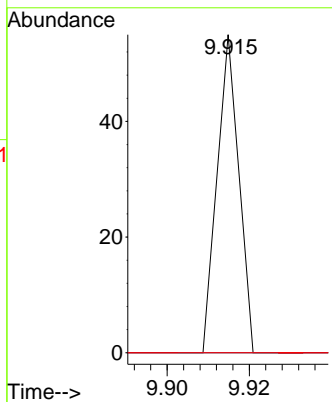


#66  
 1,1,1,2-Tetrachloroethane  
 Concen: 0.98 ug/l  
 RT: 9.915 min Scan# 1448  
 Delta R.T. -0.250 min  
 Lab File: VX023619.D  
 Acq: 09 Aug 2021 17:35

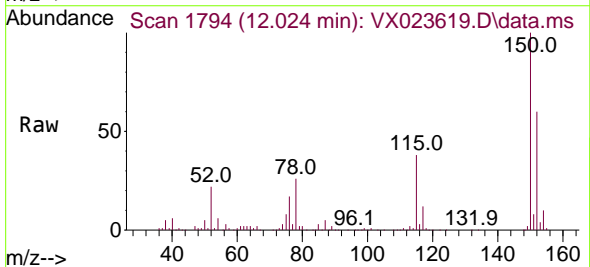
Instrument :  
 MSVOA\_X  
 ClientSampled :



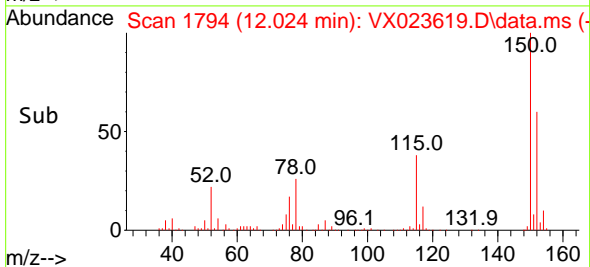
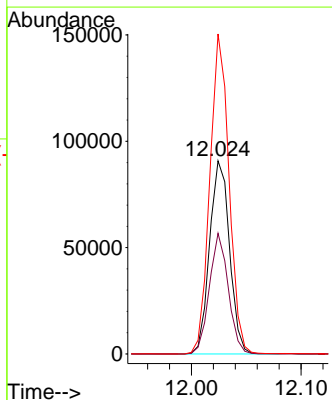
Tgt Ion:131 Resp: 20  
 Ion Ratio Lower Upper  
 131 100  
 133 0.0 47.7 143.1#  
 119 0.0 32.1 96.5#

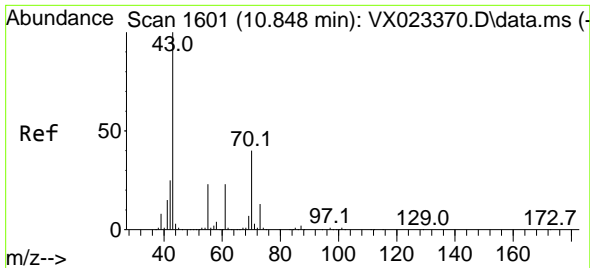


#72  
 1,4-Dichlorobenzene-d4  
 Concen: 50.00 ug/l  
 RT: 12.024 min Scan# 1794  
 Delta R.T. 0.000 min  
 Lab File: VX023619.D  
 Acq: 09 Aug 2021 17:35



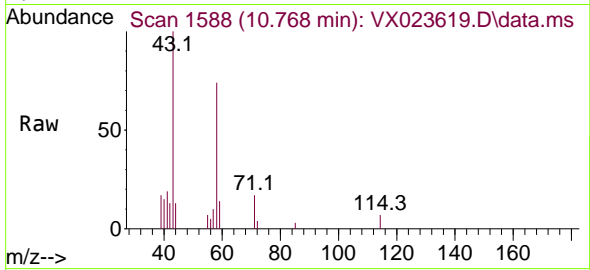
Tgt Ion:152 Resp: 114818  
 Ion Ratio Lower Upper  
 152 100  
 115 59.1 41.1 123.3  
 150 159.1 0.0 349.0





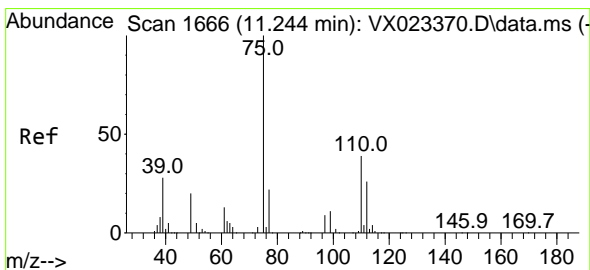
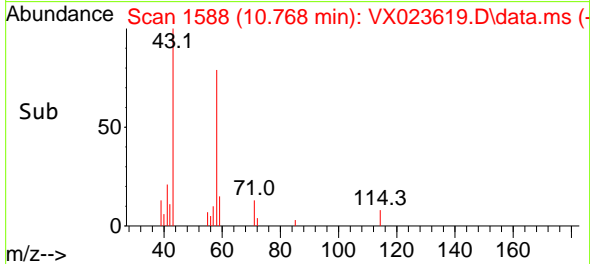
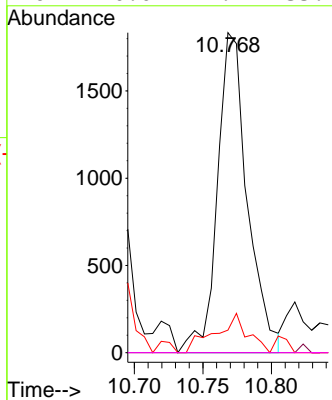
#74  
 N-amy1 acetate  
 Concen: 0.71 ug/l  
 RT: 10.768 min Scan# 1588  
 Delta R.T. -0.080 min  
 Lab File: VX023619.D  
 Acq: 09 Aug 2021 17:35

Instrument :  
 MSVOA\_X  
 ClientSampled :

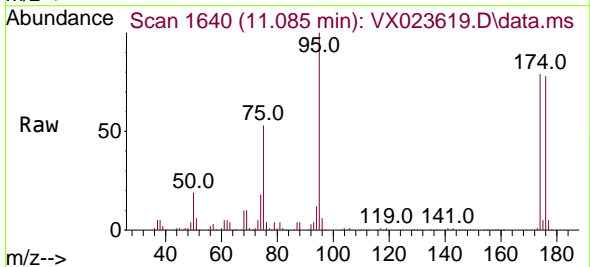


Tgt Ion: 43 Resp: 2787

Ion	Ratio	Lower	Upper
43	100		
70	0.0	39.0	58.6#
55	13.3	21.5	32.3#
61	0.0	22.1	33.1#

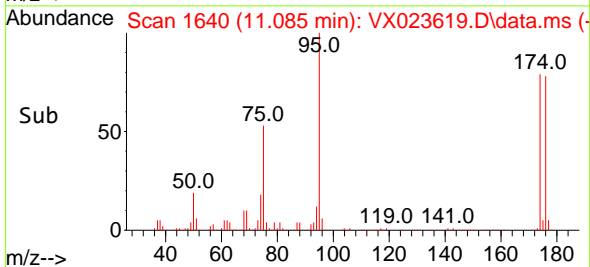
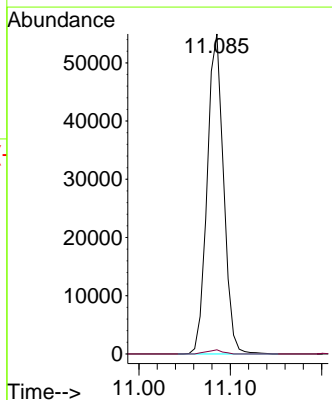


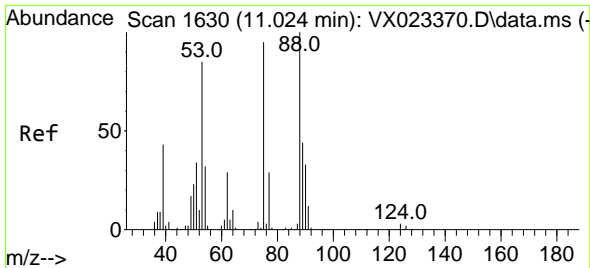
#76  
 1,2,3-Trichloropropane  
 Concen: 27.01 ug/l  
 RT: 11.085 min Scan# 1640  
 Delta R.T. -0.159 min  
 Lab File: VX023619.D  
 Acq: 09 Aug 2021 17:35



Tgt Ion: 75 Resp: 68254

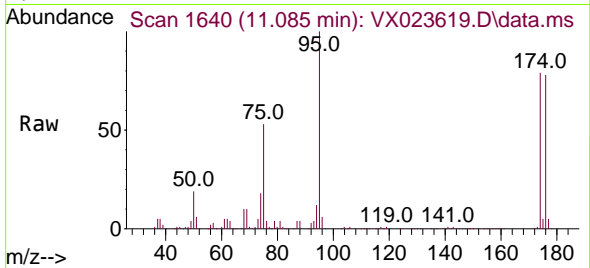
Ion	Ratio	Lower	Upper
75	100		
77	1.2	19.1	57.5#



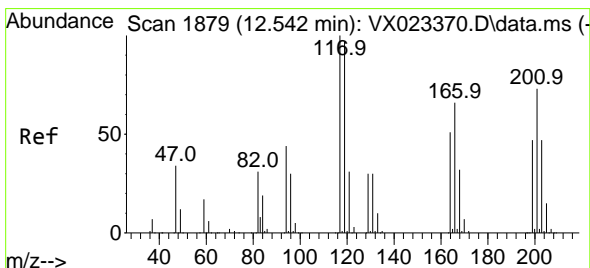
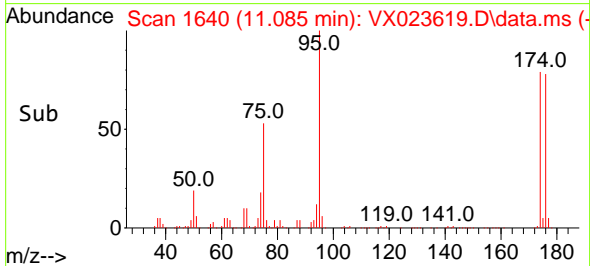
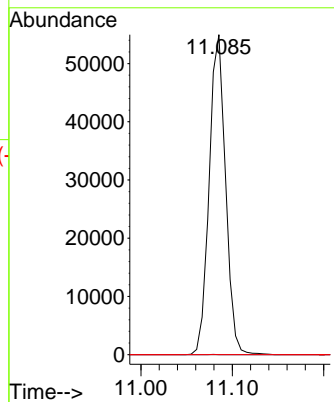


#81  
 trans-1,4-Dichloro-2-butene  
 Concen: 72.64 ug/l  
 RT: 11.085 min Scan# 1640  
 Delta R.T. 0.061 min  
 Lab File: VX023619.D  
 Acq: 09 Aug 2021 17:35

Instrument :  
 MSVOA\_X  
 ClientSampleId :



Tgt Ion: 75 Resp: 68254  
 Ion Ratio Lower Upper  
 75 100  
 53 0.0 74.5 111.7#  
 89 0.0 37.9 56.9#



#90  
 Hexachloroethane  
 Concen: 1.93 ug/l  
 RT: 12.774 min Scan# 1917  
 Delta R.T. 0.232 min  
 Lab File: VX023619.D  
 Acq: 09 Aug 2021 17:35

Tgt Ion:117 Resp: 48  
 Ion Ratio Lower Upper  
 117 100  
 201 0.0 40.4 121.2#

