

Data Path : Z:\voasrv\HPCHEM1\MSVOA_X\Data\VX080922\
 Data File : VX030530.D
 Acq On : 09 Aug 2022 16:23
 Operator : JC/MD
 Sample : N4114-02
 Misc : 5.0mL/MSVOA_X/WATER
 ALS Vial : 1 Sample Multiplier: 1

Instrument :
 MSVOA_X
 ClientSampleId :
 F5D44

Integration Parameters: LSCINT.P

Integrator: RTE
 Smoothing : OFF
 Sampling : 1
 Start Thrs : 0.2
 Stop Thrs : 0

Filtering: 5
 Min Area: 0 % of largest Peak
 Max Peaks: 100
 Peak Location: TOP

If leading or trailing edge < 100 prefer < Baseline drop else tangent >
 Peak separation: 5

Method : Z:\voasrv\HPCHEM1\MSVOA_X\Method\SFAMXML080422WMA.M
 Title : VOC Analysis

Signal : TIC: VX030530.D\data.ms

peak #	R.T. min	first scan	max scan	last scan	PK TY	peak height	corr. area	corr. % max.	% of total
1	1.374	43	47	62	rVB	920202	1064414	12.70%	4.178%
2	1.666	91	95	97	rBV	84916	104406	1.25%	0.410%
3	2.312	194	201	213	rVB2	216844	407224	4.86%	1.598%
4	2.398	213	215	217	rBV2	990	865	0.01%	0.003%
5	2.587	244	246	249	rBV2	381	526	0.01%	0.002%
6	2.745	271	272	274	rBV	473	326	0.00%	0.001%
7	2.794	274	280	286	rVB5	1468	2669	0.03%	0.010%
8	2.861	288	291	294	rBV3	788	1034	0.01%	0.004%
9	2.928	300	302	306	rVB2	426	396	0.00%	0.002%
10	3.093	322	329	341	rBV	50405	99863	1.19%	0.392%
11	3.367	372	374	376	rBV2	301	340	0.00%	0.001%
12	3.721	430	432	433	rBV	567	362	0.00%	0.001%
13	3.879	455	458	462	rBV2	478	830	0.01%	0.003%
14	3.971	471	473	477	rVB3	423	382	0.00%	0.001%
15	4.062	487	488	491	rVB	409	340	0.00%	0.001%
16	4.129	497	499	503	rVB2	461	549	0.01%	0.002%
17	4.343	532	534	537	rBV2	412	485	0.01%	0.002%
18	4.495	546	559	583	rBV	2561522	7066793	84.35%	27.738%
19	5.068	640	653	668	rVV2	120275	396759	4.74%	1.557%
20	5.306	690	692	694	rBV	384	330	0.00%	0.001%
21	5.348	697	699	701	rBV2	401	351	0.00%	0.001%
22	5.568	729	735	744	rVV6	2746	7257	0.09%	0.028%
23	5.672	749	752	753	rBV2	333	326	0.00%	0.001%
24	5.684	753	754	757	rVB	544	519	0.01%	0.002%
25	5.714	757	759	761	rBV2	506	620	0.01%	0.002%
26	5.982	791	803	818	rBV3	327469	947176	11.31%	3.718%
27	6.208	839	840	843	rBV2	507	486	0.01%	0.002%
28	6.373	865	867	868	rBV2	597	411	0.00%	0.002%
29	6.434	875	877	880	rVB	799	533	0.01%	0.002%
30	6.604	903	905	907	rBV	630	419	0.01%	0.002%
31	6.769	922	932	946	rBV	301757	724185	8.64%	2.842%
32	6.946	959	961	966	rBV3	473	655	0.01%	0.003%
33	7.013	971	972	974	rBV2	388	336	0.00%	0.001%
34	7.055	977	979	980	rVB	638	389	0.00%	0.002%
35	7.135	980	992	1014	rBV	3943778	8378268	100.00%	32.885%
36	7.318	1014	1022	1040	rVB	199876	443307	5.29%	1.740%

Data Path : Z:\voasrv\HPCHEM1\MSVOA_X\Data\VX080922\
 Data File : VX030530.D
 Acq On : 09 Aug 2022 16:23
 Operator : JC/MD
 Sample : N4114-02
 Misc : 5.0mL/MSVOA_X/WATER
 ALS Vial : 1 Sample Multiplier: 1

Instrument :
 MSVOA_X
 ClientSampleId :
 F5D44

Integration Parameters: LSCINT.P

Integrator: RTE
 Smoothing : OFF
 Sampling : 1
 Start Thrs: 0.2
 Stop Thrs : 0

Filtering: 5
 Min Area: 0 % of largest Peak
 Max Peaks: 100
 Peak Location: TOP

If leading or trailing edge < 100 prefer < Baseline drop else tangent >
 Peak separation: 5

Method : Z:\voasrv\HPCHEM1\MSVOA_X\Method\SFAMXML080422WMA.M
 Title : VOC Analysis

37	7.525	1055	1056	1060	rVB3	861	676	0.01%	0.003%
38	7.702	1083	1085	1086	rBV	735	522	0.01%	0.002%
39	7.793	1098	1100	1102	rBV3	518	625	0.01%	0.002%
40	7.860	1106	1111	1112	rBV2	573	759	0.01%	0.003%
41	7.879	1112	1114	1118	rVB	567	592	0.01%	0.002%
42	7.933	1121	1123	1125	rBV3	830	964	0.01%	0.004%
43	8.019	1135	1137	1140	rVB3	508	524	0.01%	0.002%
44	8.074	1145	1146	1150	rVB	313	340	0.00%	0.001%
45	8.250	1173	1175	1179	rVB2	710	738	0.01%	0.003%
46	8.330	1181	1188	1202	rVV	131379	220586	2.63%	0.866%
47	8.653	1235	1241	1249	rVV	453765	708422	8.46%	2.781%
48	8.854	1269	1274	1278	rBV3	580	1291	0.02%	0.005%
49	8.958	1285	1291	1304	rBV	96345	146712	1.75%	0.576%
50	9.281	1337	1344	1356	rBV	909990	1335043	15.93%	5.240%
51	9.390	1356	1362	1375	rVV	426631	582231	6.95%	2.285%
52	9.896	1442	1445	1446	rVB	554	418	0.00%	0.002%
53	10.006	1460	1463	1465	rBV3	684	754	0.01%	0.003%
54	10.061	1466	1472	1480	rVV	609413	826921	9.87%	3.246%
55	10.281	1506	1508	1510	rVB	603	408	0.00%	0.002%
56	10.317	1510	1514	1516	rBV3	860	1045	0.01%	0.004%
57	10.354	1519	1520	1521	rBV	792	356	0.00%	0.001%
58	10.476	1536	1540	1541	rBV2	444	488	0.01%	0.002%
59	10.579	1554	1557	1558	rBV2	386	370	0.00%	0.001%
60	10.768	1586	1588	1591	rBV	372	418	0.00%	0.002%
61	10.878	1604	1606	1609	rVB2	569	386	0.00%	0.002%
62	10.945	1612	1617	1618	rBV3	487	690	0.01%	0.003%
63	11.195	1653	1658	1669	rVB	375919	471668	5.63%	1.851%
64	11.439	1696	1698	1699	rBV	661	363	0.00%	0.001%
65	11.597	1718	1724	1725	rBV3	488	822	0.01%	0.003%
66	11.707	1740	1742	1743	rBV	520	348	0.00%	0.001%
67	11.823	1759	1761	1762	rBV2	505	448	0.01%	0.002%
68	11.890	1769	1772	1773	rBV2	334	358	0.00%	0.001%
69	12.024	1789	1794	1806	rBV	650705	804408	9.60%	3.157%
70	12.323	1838	1843	1854	rVB	562064	692891	8.27%	2.720%
71	12.561	1881	1882	1885	rVV2	723	515	0.01%	0.002%
72	12.585	1885	1886	1889	rVV2	441	470	0.01%	0.002%
73	12.634	1892	1894	1896	rVV2	495	401	0.00%	0.002%
74	12.658	1896	1898	1901	rVB	463	436	0.01%	0.002%
75	12.683	1901	1902	1905	rBV2	449	569	0.01%	0.002%
76	12.737	1909	1911	1913	rVB	450	364	0.00%	0.001%

Data Path : Z:\voasrv\HPCHEM1\MSVOA_X\Data\VX080922\
 Data File : VX030530.D
 Acq On : 09 Aug 2022 16:23
 Operator : JC/MD
 Sample : N4114-02
 Misc : 5.0mL/MSVOA_X/WATER
 ALS Vial : 1 Sample Multiplier: 1

Instrument :
 MSVOA_X
 ClientSampleId :
 F5D44

Integration Parameters: LSCINT.P

Integrator: RTE
 Smoothing : OFF Filtering: 5
 Sampling : 1 Min Area: 0 % of largest Peak
 Start Thrs: 0.2 Max Peaks: 100
 Stop Thrs : 0 Peak Location: TOP

If leading or trailing edge < 100 prefer < Baseline drop else tangent >
 Peak separation: 5

Method : Z:\voasrv\HPCHEM1\MSVOA_X\Method\SFAMXML080422WMA.M
 Title : VOC Analysis

77	12.792	1918	1920	1921	rBV2	544	430	0.01%	0.002%
78	12.865	1928	1932	1935	rBV3	1262	1953	0.02%	0.008%
79	13.152	1977	1979	1981	rBV2	727	557	0.01%	0.002%
80	13.225	1988	1991	1992	rBV	468	565	0.01%	0.002%
81	13.274	1997	1999	2001	rBV3	520	501	0.01%	0.002%
82	13.347	2006	2011	2013	rBV2	584	881	0.01%	0.003%
83	13.420	2021	2023	2025	rBV2	484	433	0.01%	0.002%
84	13.688	2065	2067	2071	rBV3	1012	1569	0.02%	0.006%
85	13.786	2080	2083	2084	rBV2	485	499	0.01%	0.002%
86	13.957	2109	2111	2112	rBV	429	369	0.00%	0.001%
87	14.201	2148	2151	2153	rBV2	337	444	0.01%	0.002%
88	14.524	2201	2204	2207	rBV2	553	849	0.01%	0.003%
89	14.761	2241	2243	2245	rBV	745	462	0.01%	0.002%
90	14.835	2254	2255	2257	rBV2	454	351	0.00%	0.001%
91	14.920	2267	2269	2272	rBV3	870	748	0.01%	0.003%
92	14.963	2274	2276	2277	rBV	574	377	0.00%	0.001%
93	15.188	2311	2313	2314	rBV	1131	802	0.01%	0.003%
94	15.261	2323	2325	2328	rBV2	668	793	0.01%	0.003%
95	15.286	2328	2329	2332	rVB3	941	834	0.01%	0.003%
96	16.170	2472	2474	2477	rVB2	827	527	0.01%	0.002%
97	16.225	2481	2483	2484	rBV	798	484	0.01%	0.002%
98	16.322	2497	2499	2502	rBV2	854	987	0.01%	0.004%
99	16.438	2515	2518	2520	rBV5	761	900	0.01%	0.004%
100	16.603	2543	2545	2549	rBV3	499	592	0.01%	0.002%

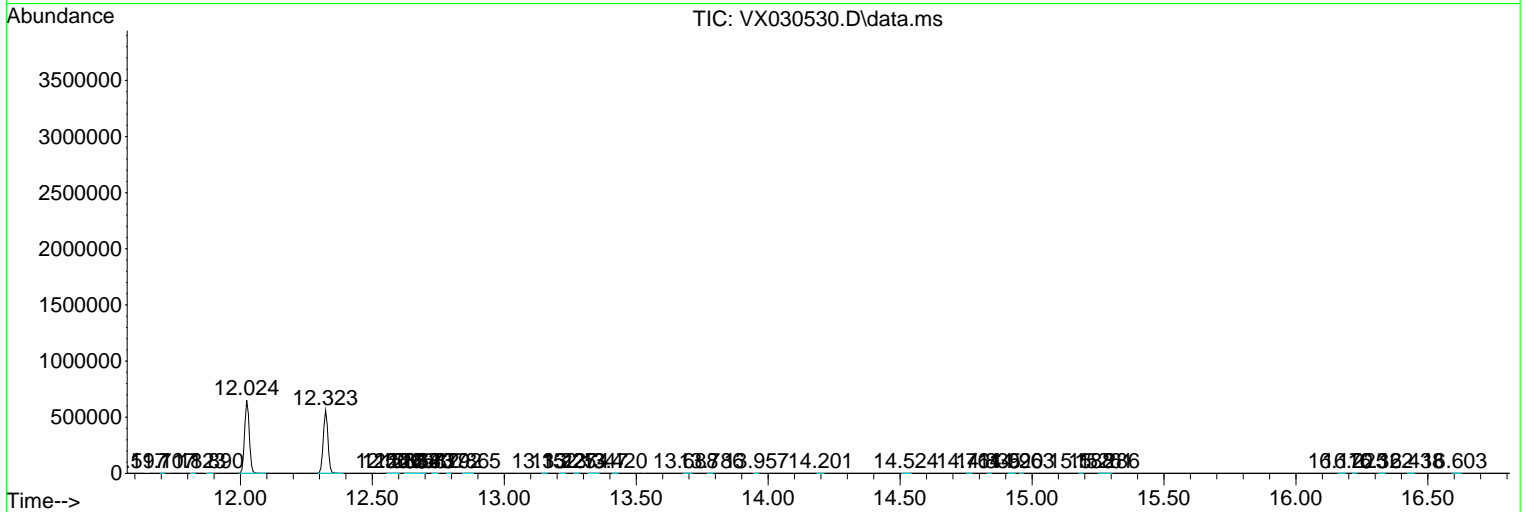
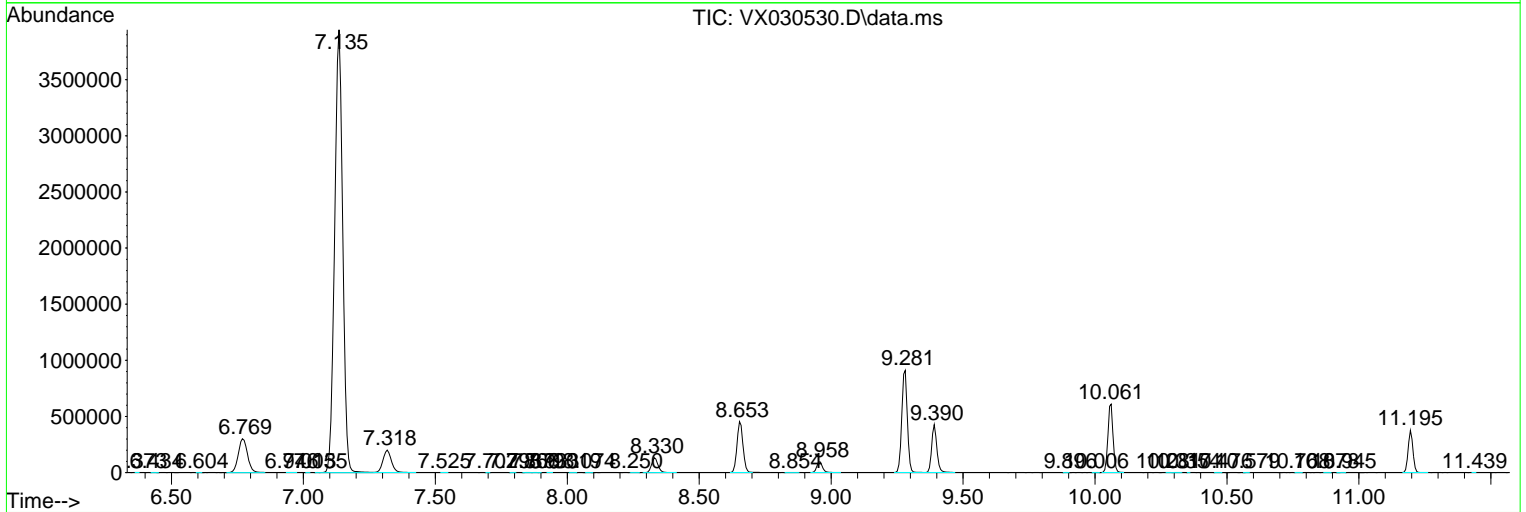
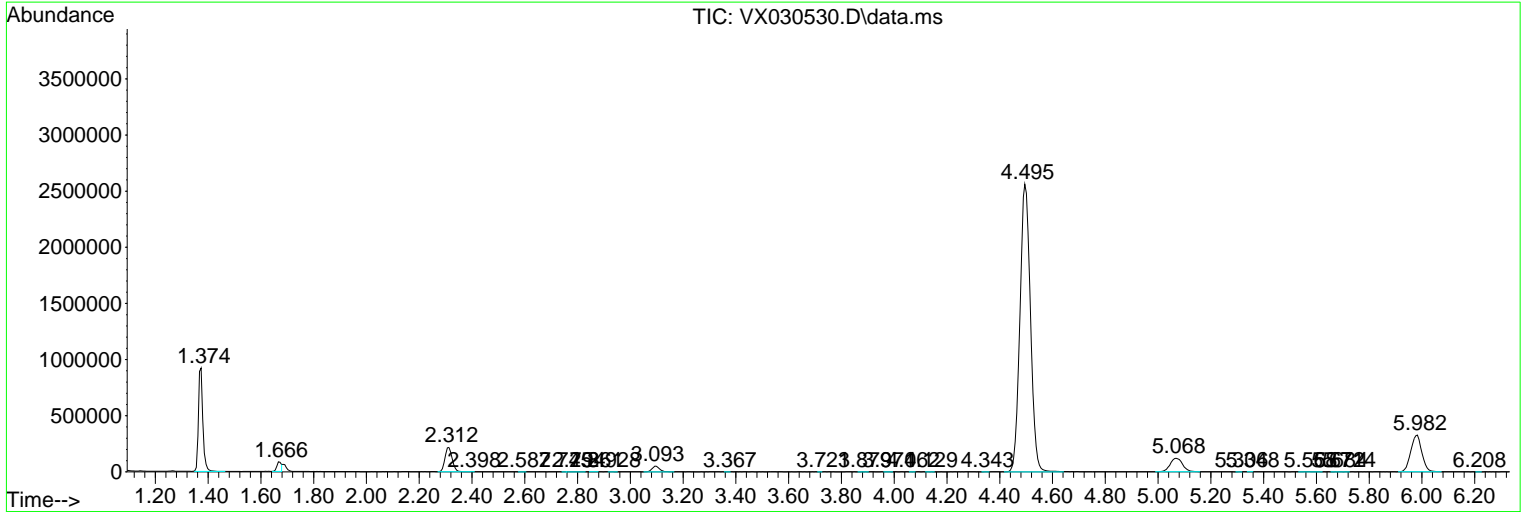
Sum of corrected areas: 25477378

Data Path : Z:\voasrv\HPCHEM1\MSVOA_X\Data\VX080922\
 Data File : VX030530.D
 Acq On : 09 Aug 2022 16:23
 Operator : JC/MD
 Sample : N4114-02
 Misc : 5.0mL/MSVOA_X/WATER
 ALS Vial : 1 Sample Multiplier: 1

Instrument :
 MSVOA_X
 ClientSampleId :
 F5D44

Quant Method : Z:\voasrv\HPCHEM1\MSVOA_X\Method\SFAMXML080422WMA.M
 Quant Title : VOC Analysis

TIC Library : C:\Database\NIST20.L
 TIC Integration Parameters: LSCINT.P



Library Search Compound Report

Data Path : Z:\voasrv\HPCHEM1\MSVOA_X\Data\VX080922\
Data File : VX030530.D
Acq On : 09 Aug 2022 16:23
Operator : JC/MD
Sample : N4114-02
Misc : 5.0mL/MSVOA_X/WATER
ALS Vial : 1 Sample Multiplier: 1

Instrument :
MSVOA_X
ClientSampleId :
F5D44

Quant Method : Z:\voasrv\HPCHEM1\MSVOA_X\Method\SFAMXML080422WMA.M
Quant Title : VOC Analysis

TIC Library : C:\Database\NIST20.L
TIC Integration Parameters: LSCINT.P

No Library Search Compounds Detected

Data Path : Z:\voasrv\HPCHEM1\MSVOA_X\Data\VX080922\
Data File : VX030530.D
Acq On : 09 Aug 2022 16:23
Operator : JC/MD
Sample : N4114-02
Misc : 5.0mL/MSVOA_X/WATER
ALS Vial : 1 Sample Multiplier: 1

Instrument :
MSVOA_X
ClientSampleId :
F5D44

Quant Method : Z:\voasrv\HPCHEM1\MSVOA_X\Method\SFAMXML080422WMA.M
Quant Title : VOC Analysis

TIC Library : C:\Database\NIST20.L
TIC Integration Parameters: LSCINT.P

TIC Top Hit name	RT	EstConc	Units	Response	--Internal Standard--			
					#	RT	Resp	Conc
